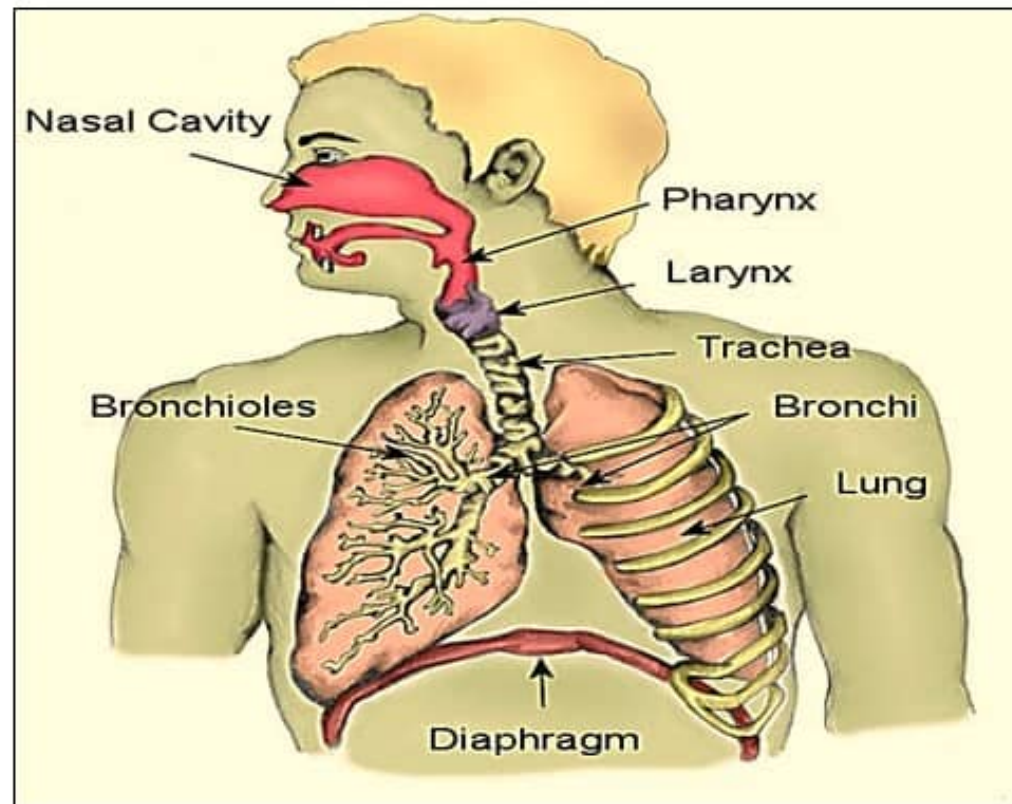
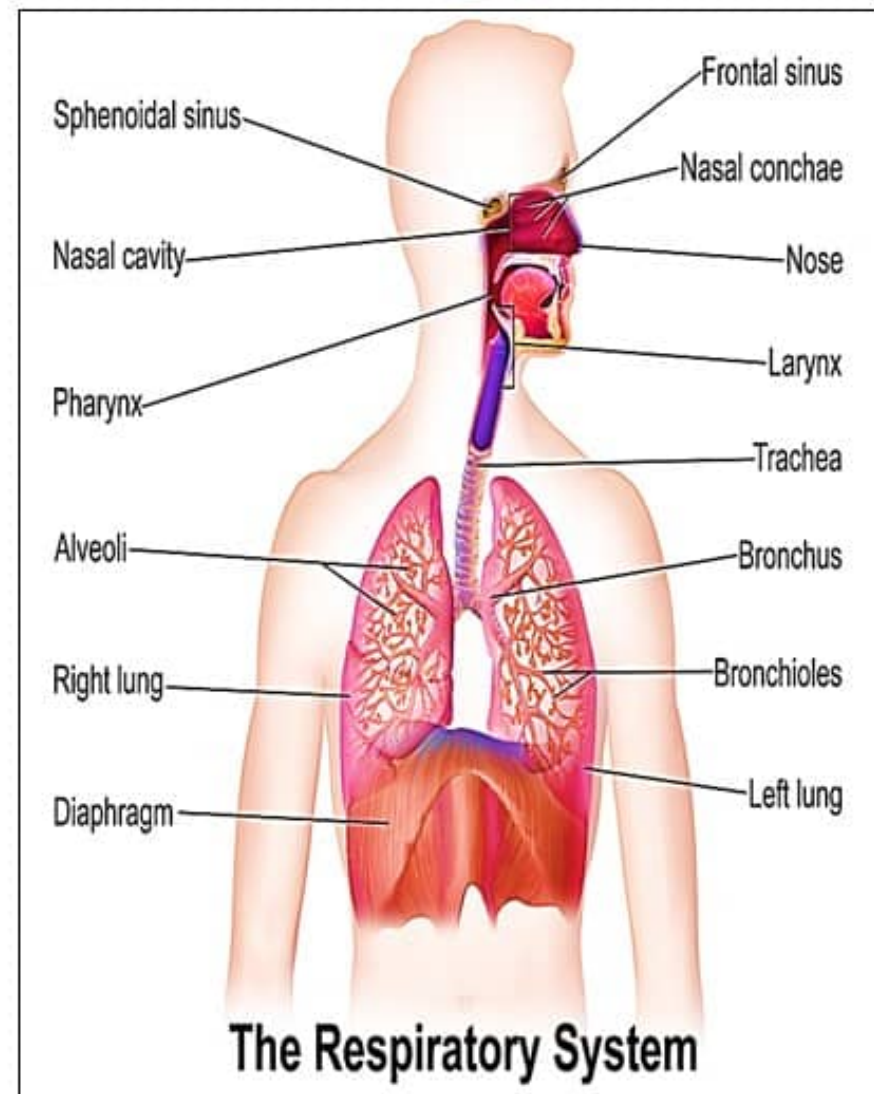


Respiratory system practical lab, 3rd year



Microscopic slides in the LAB:

- 1- Trachea
- 2- Epiglottis
- 3- Respiratory epithelium
- 4- Olfactory epithelium
- 5- Lung + bronchus
+ bronchiole
- 6- lung



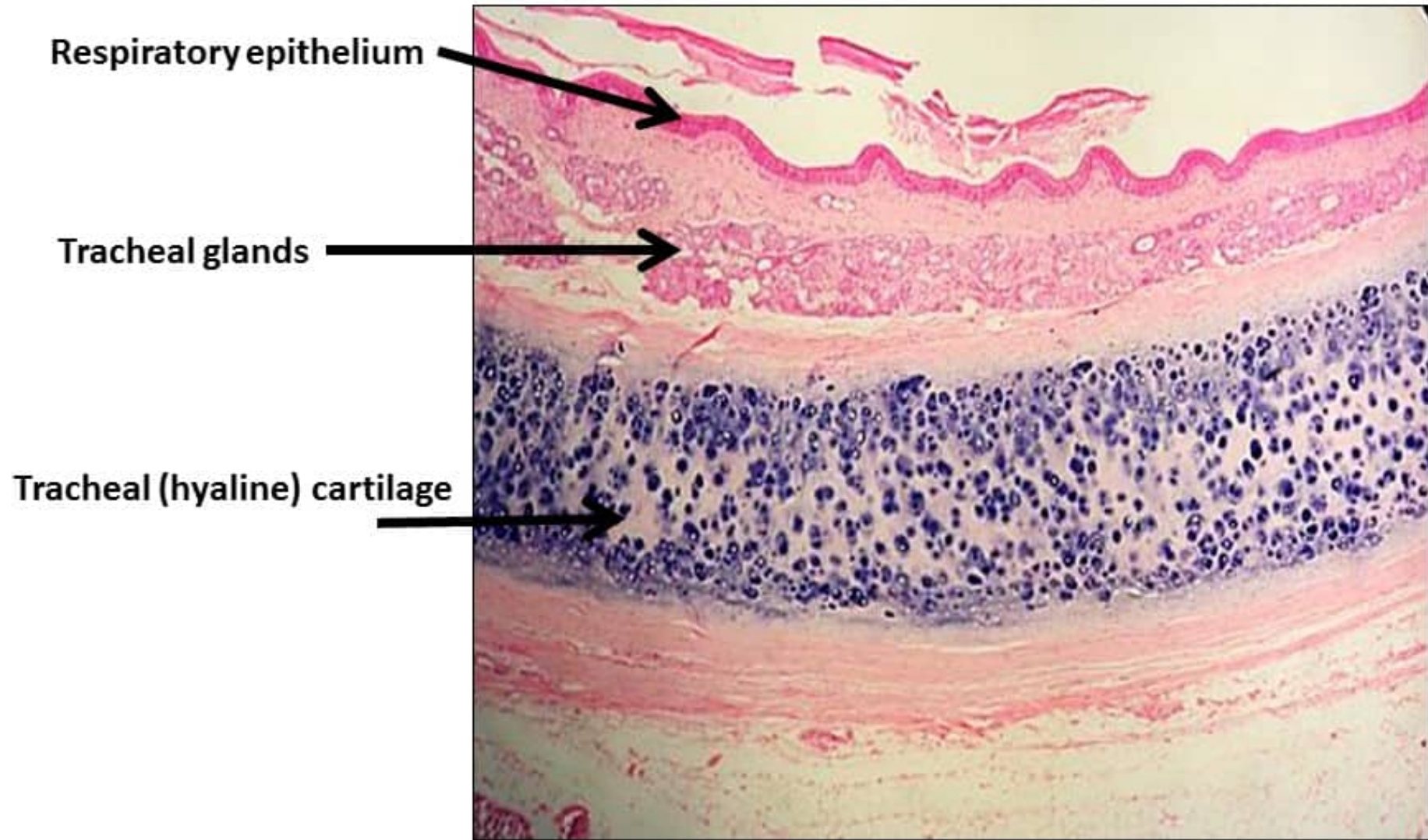
Trachea & Esophagus



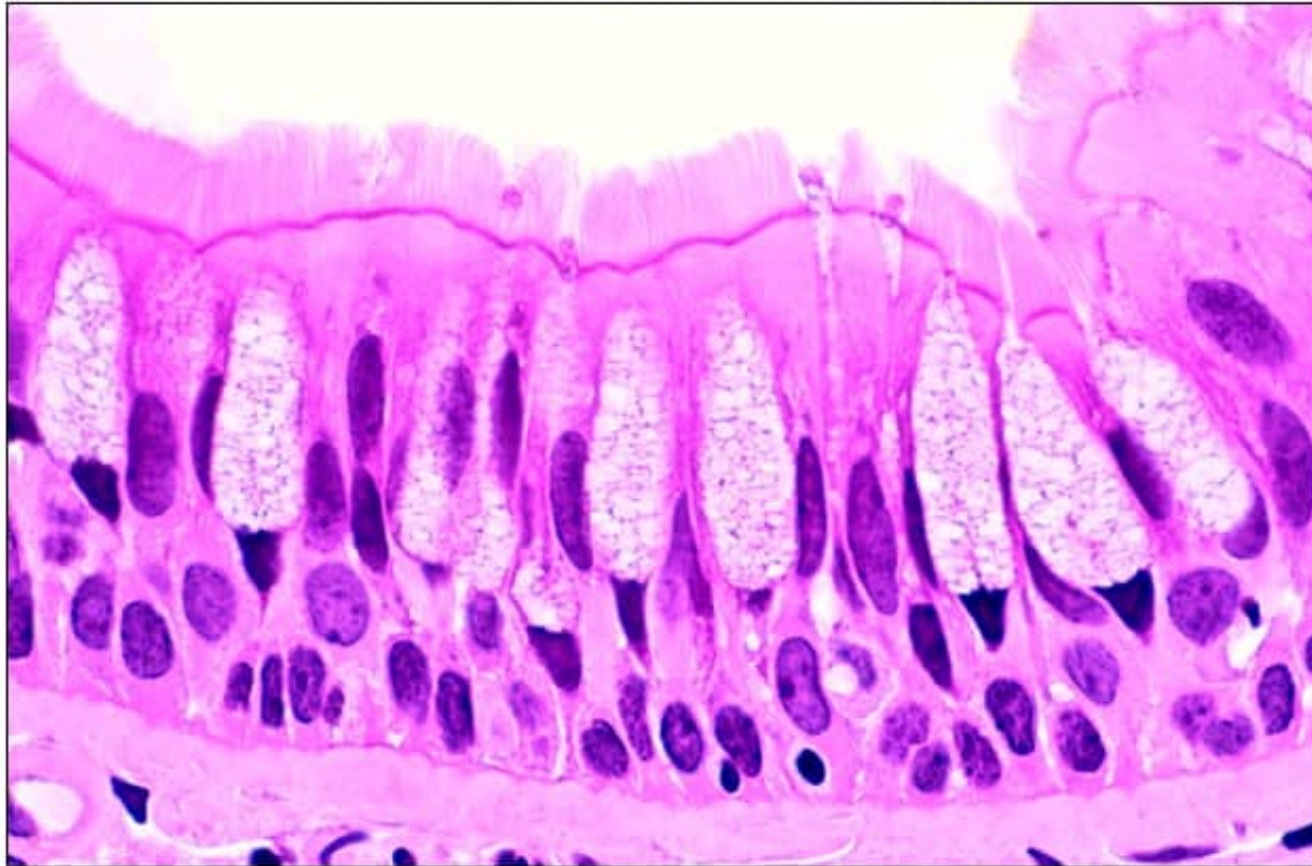
Pro.Dr. Hala Elmazar/ lab

3

Cross section in trachea

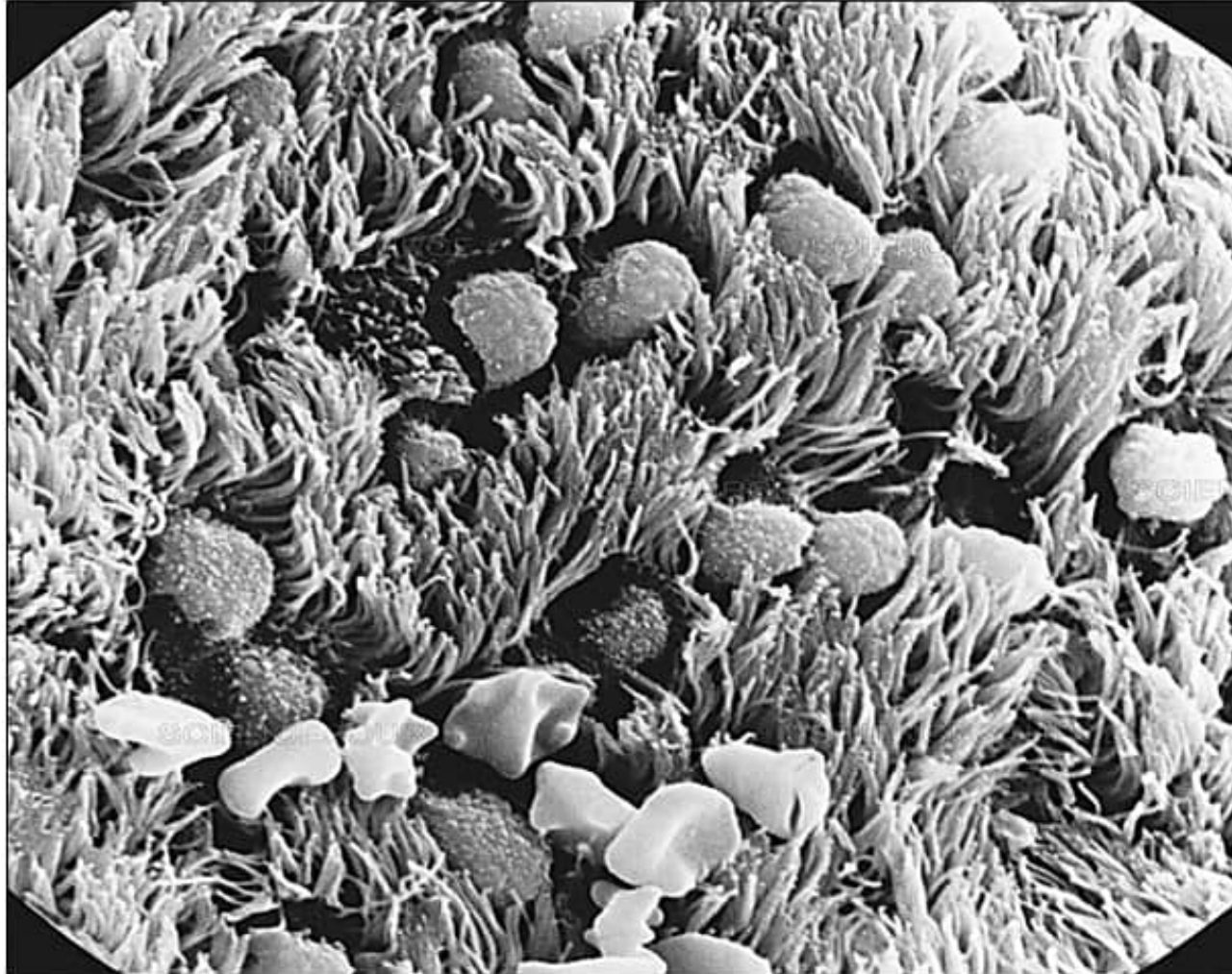


Respiratory epithelium

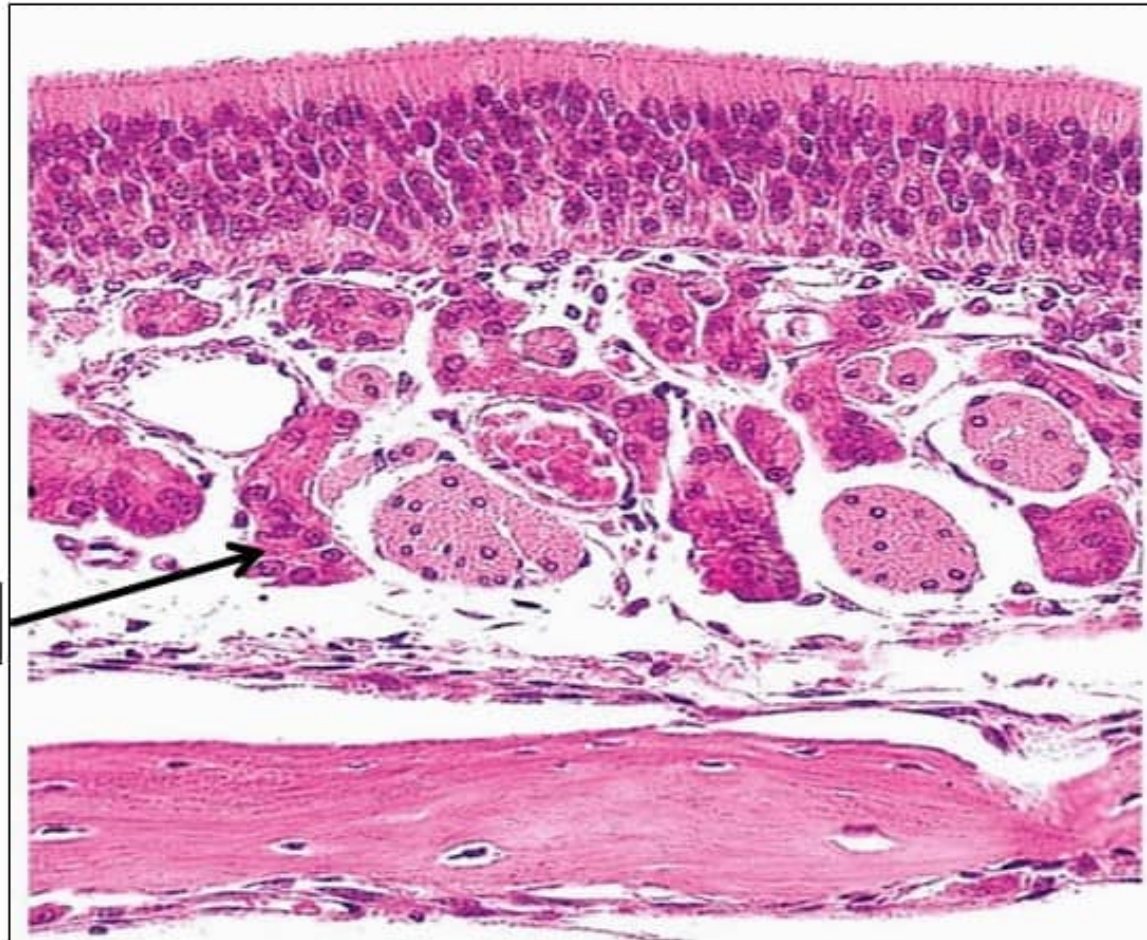


Pseudo stratified columnar ciliated with goblet cells

SEM of respiratory epithelium



Olfactory epithelium



Bowman's gland

Pseudo-stratified columnar with chemoreceptors

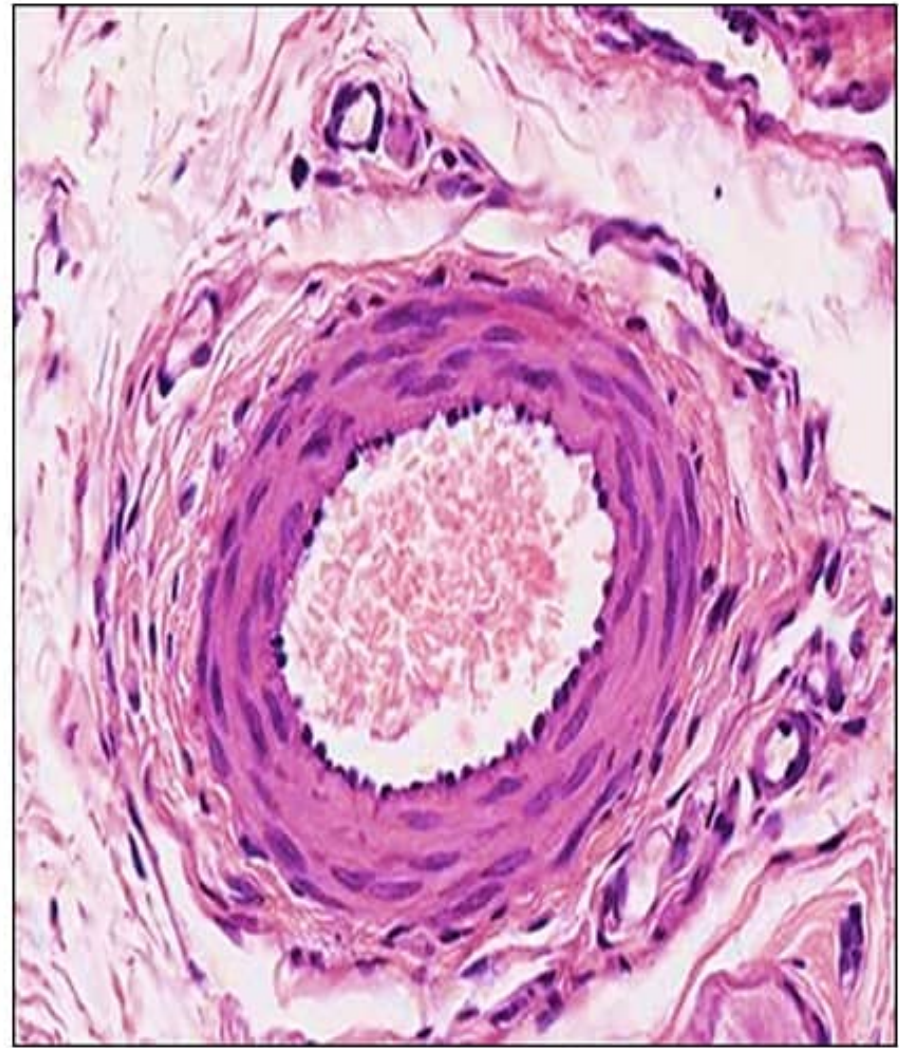
Bronchus

Cartilage plates





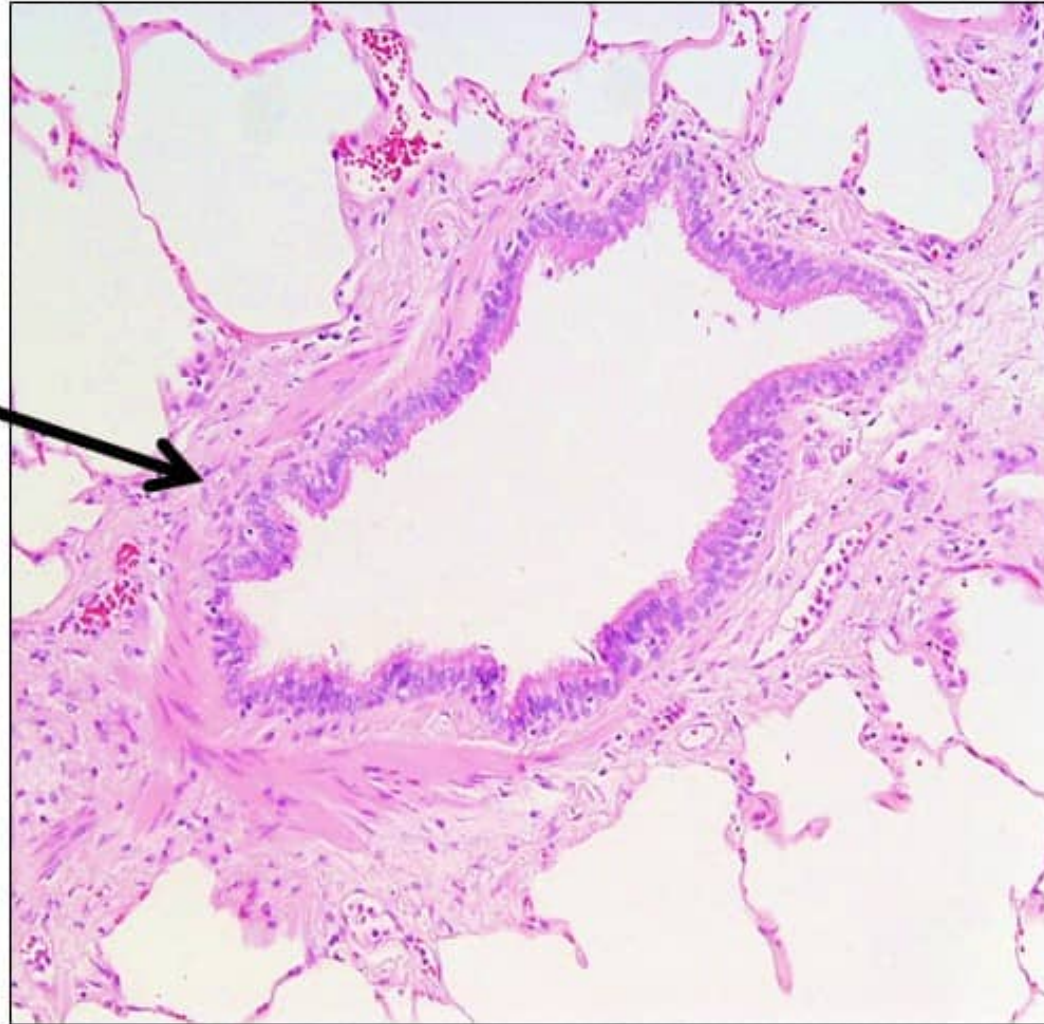
Bronchus

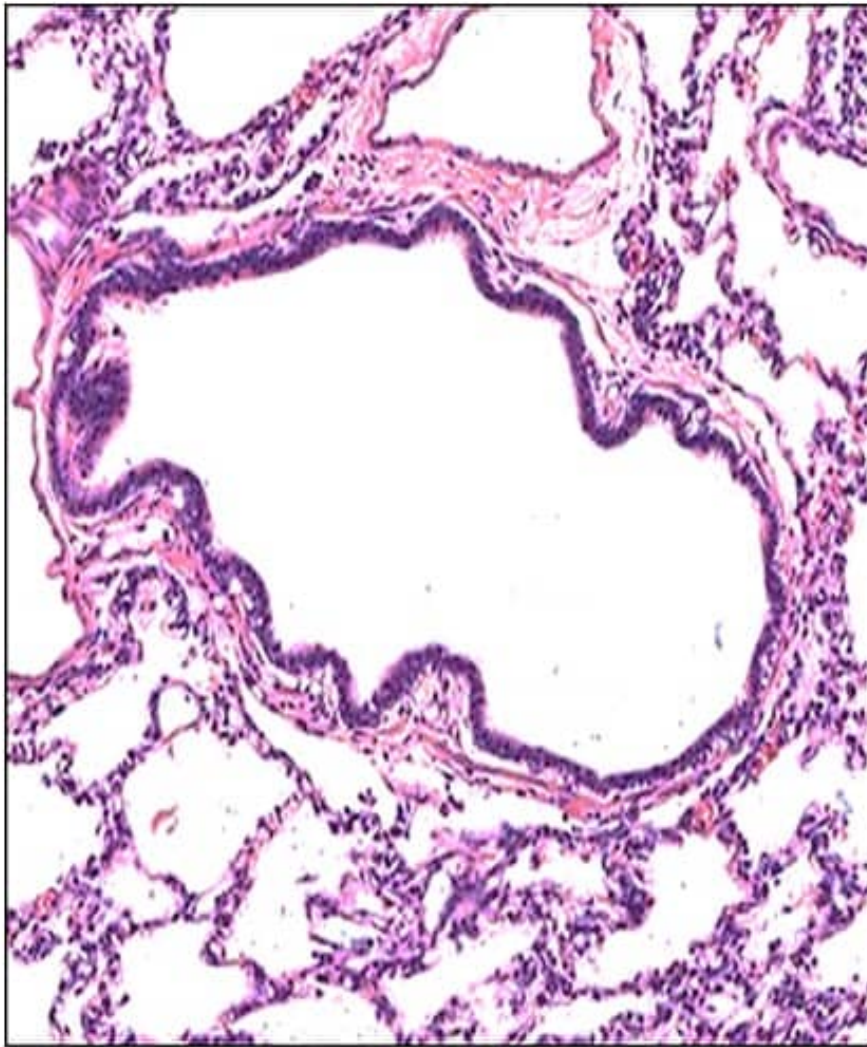


Blood vessel

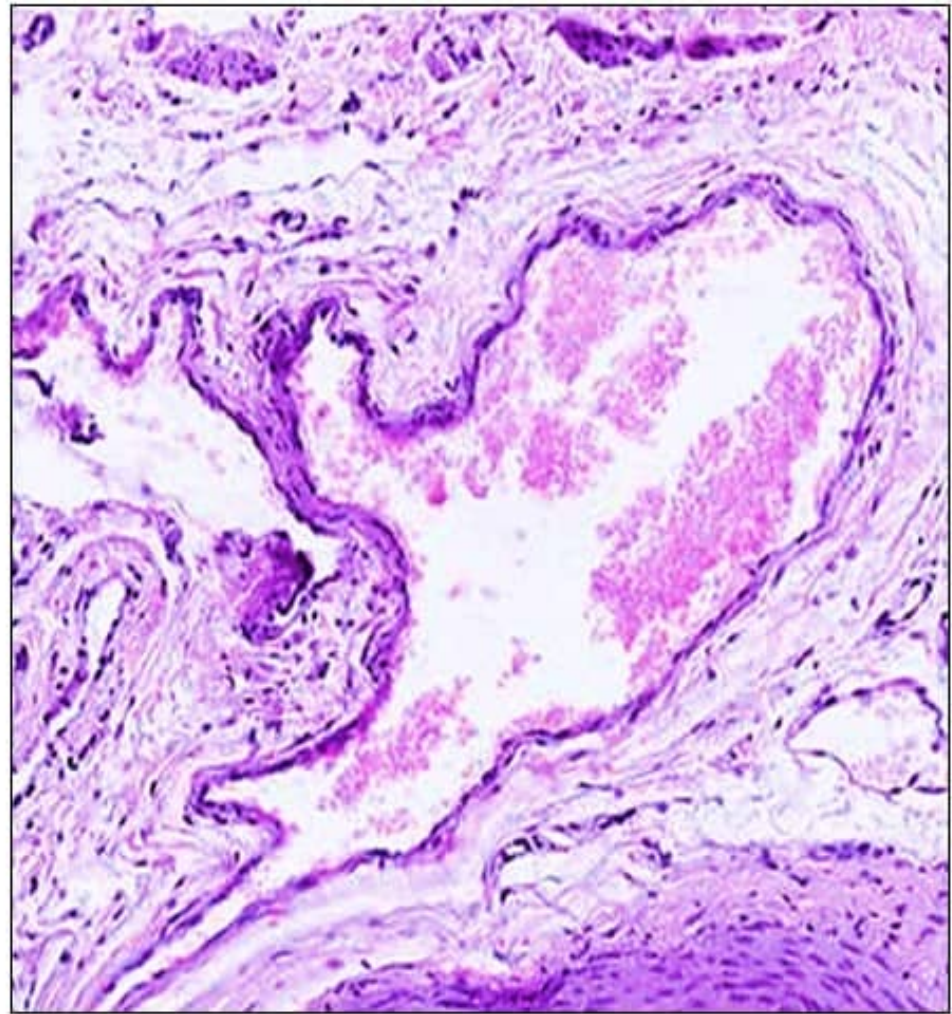
Bronchiole

Layer of circularly
arranged
smooth muscle

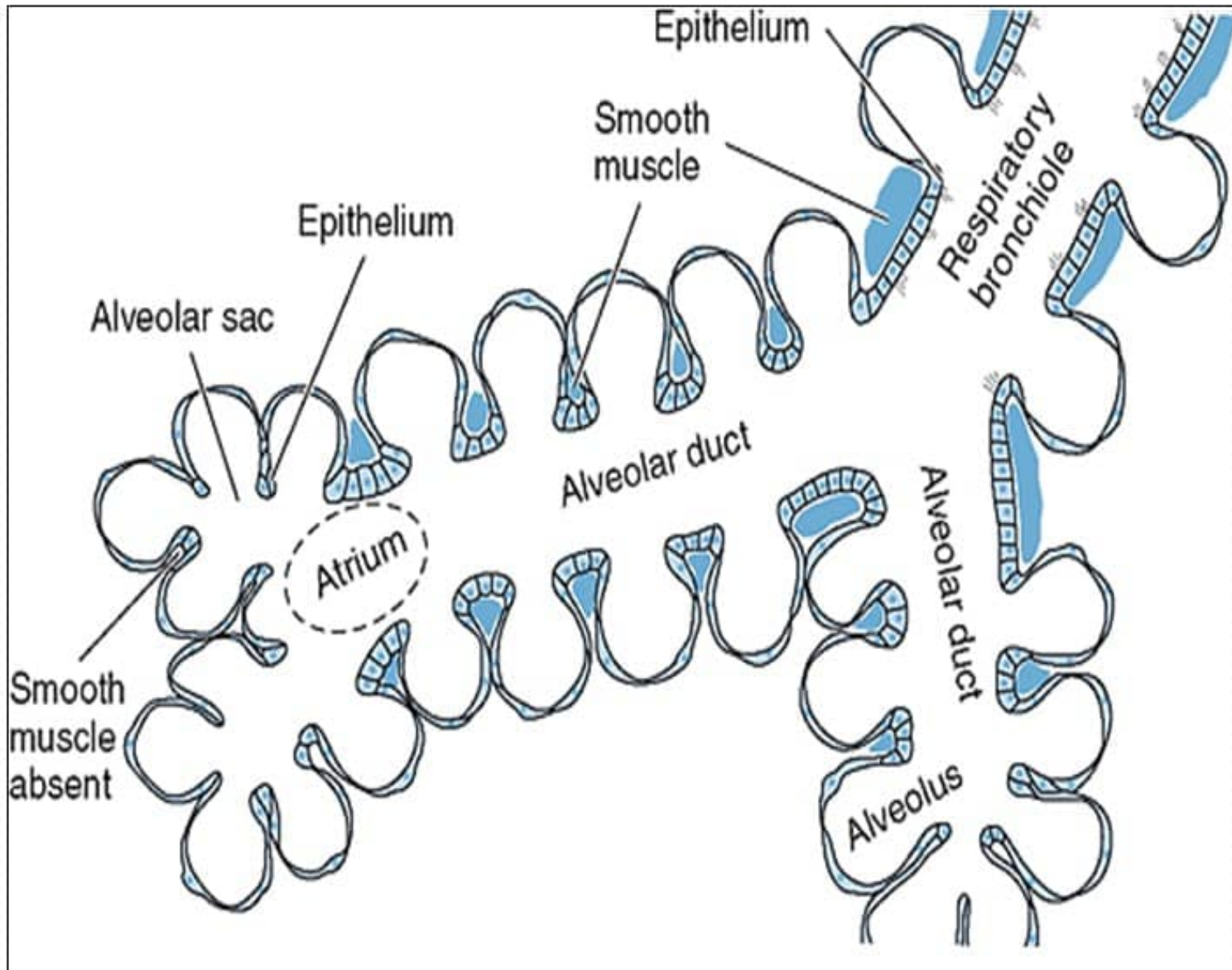




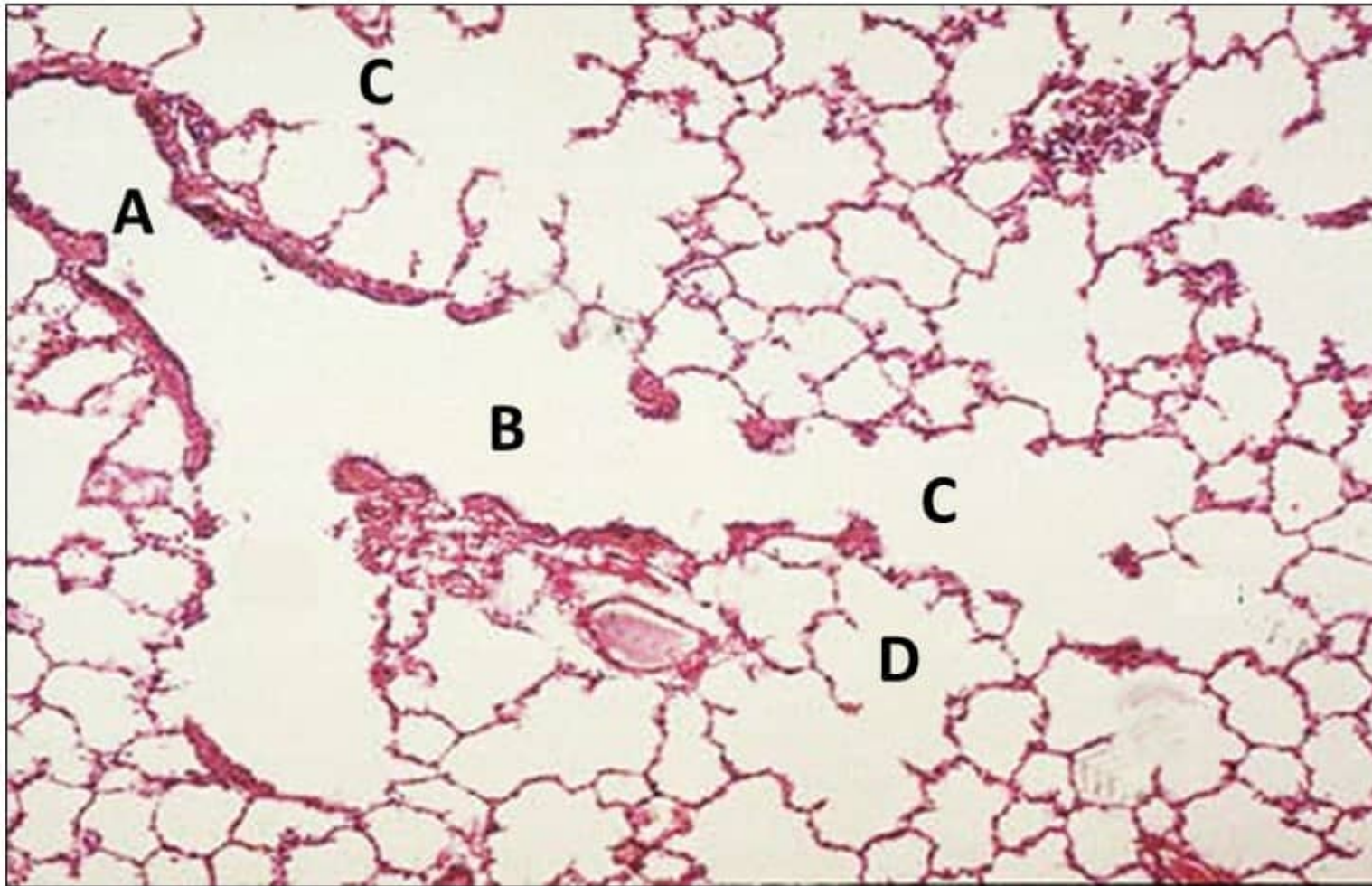
bronchiole



Blood vessel

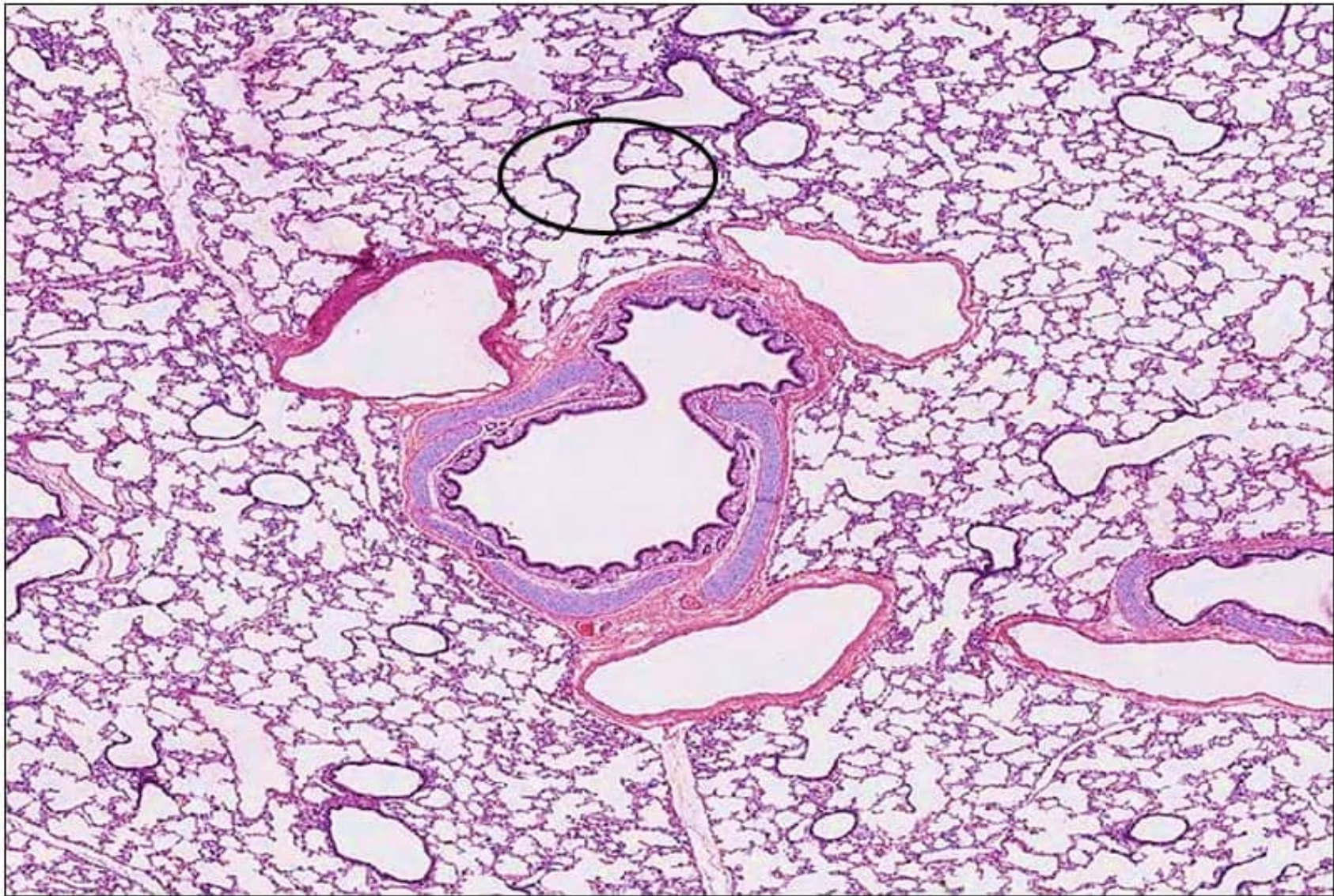


Section in lung

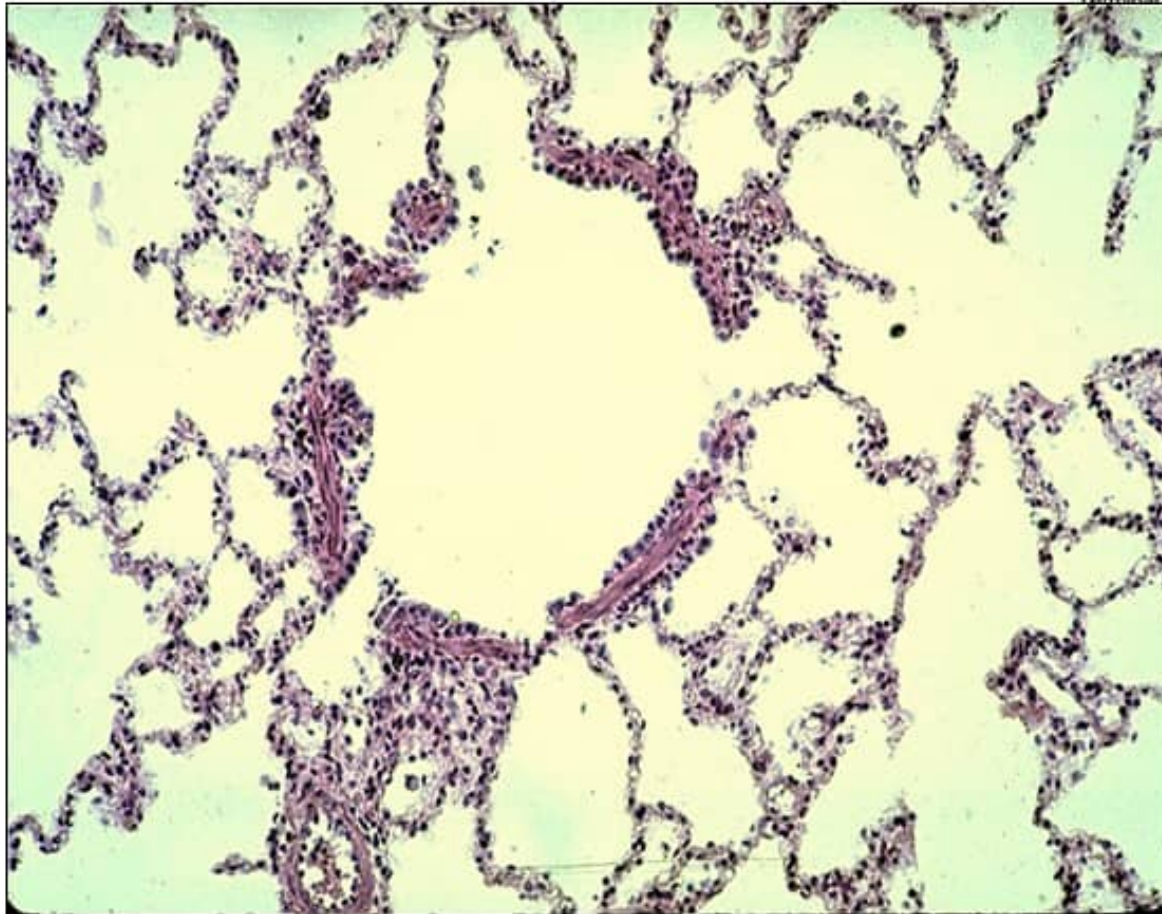
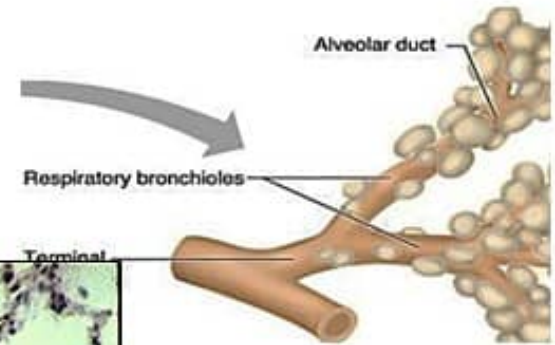


- A: Terminal bronchiole**
- B: Respiratory bronchiole**
- C: Alveolar duct**
- D: Alveolar Sac**

Cross section in lung

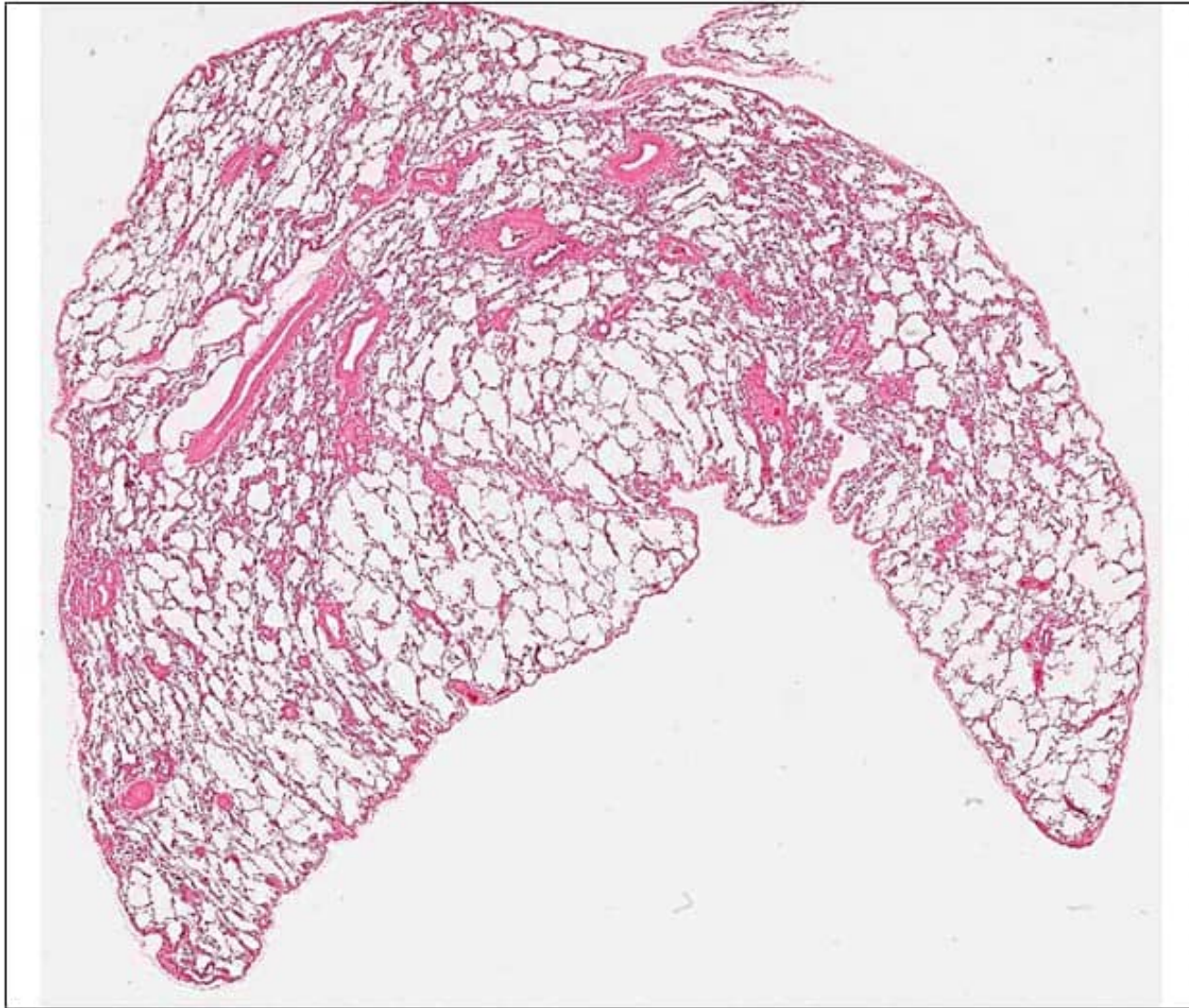


Respiratory bronchiole

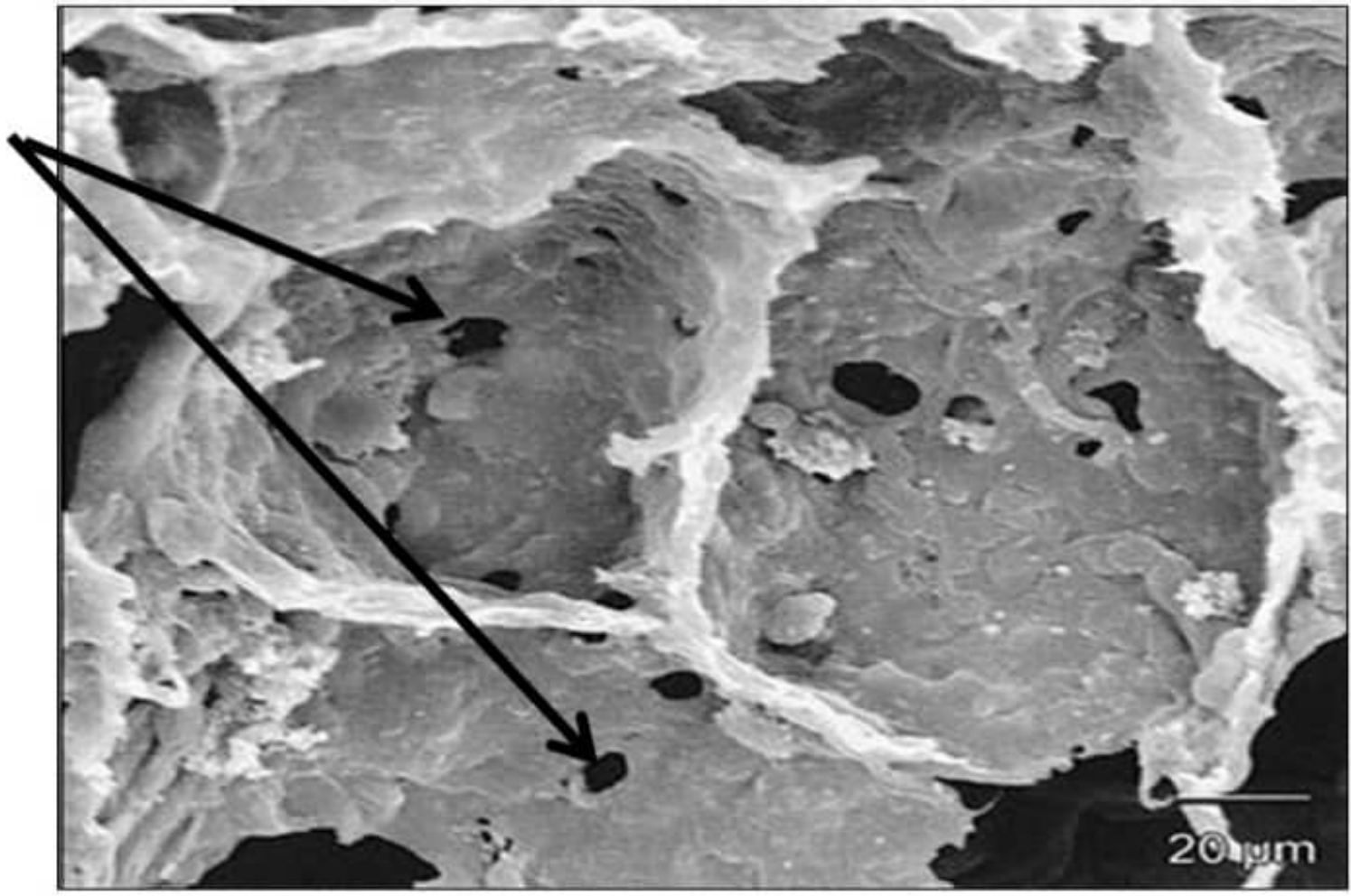


Simple cuboidal ciliated with Clara cells

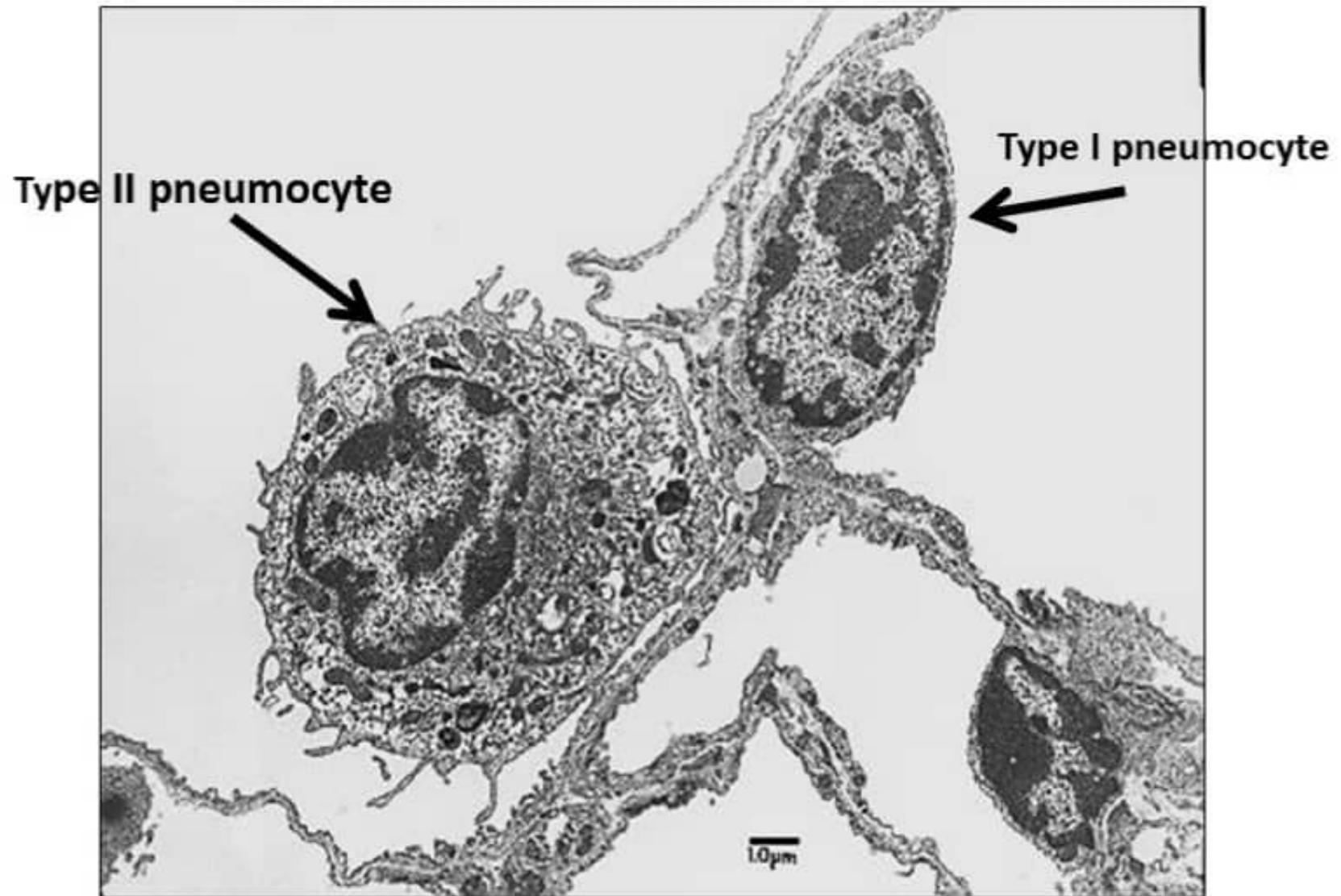
Lung



Pores of Kohn (E/M)

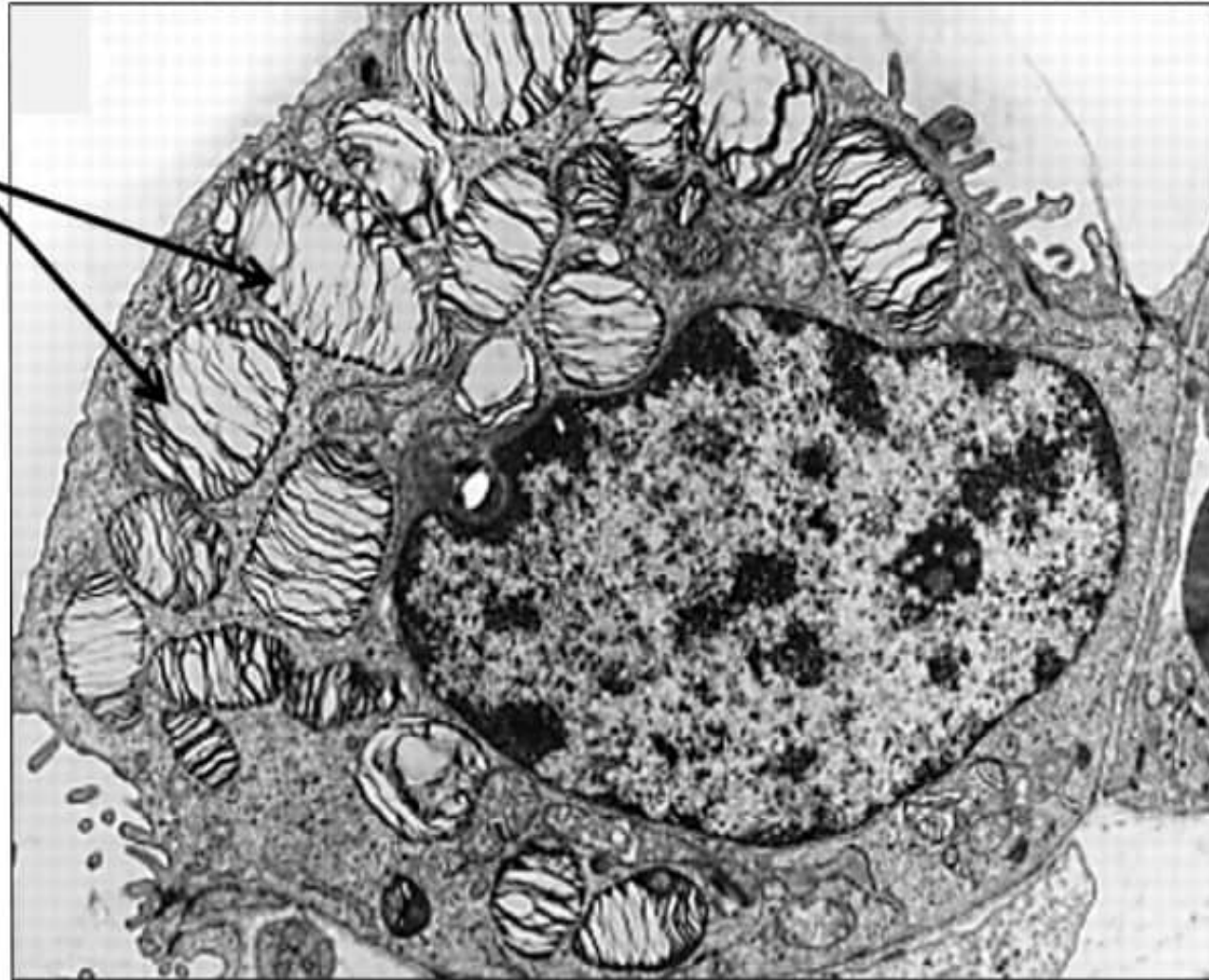


Type I & type II pneumocyte (E/M)

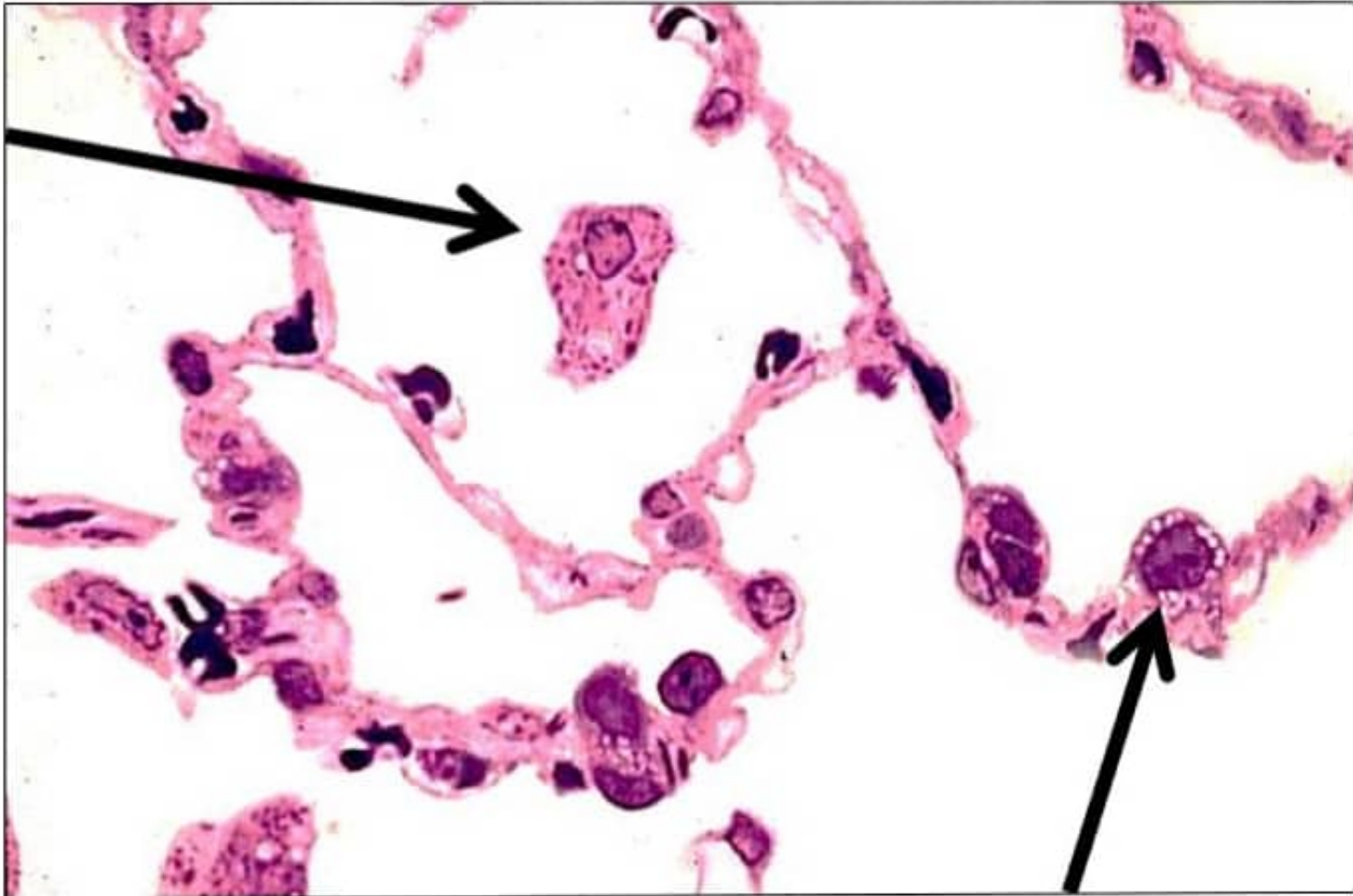


Type II pneumocyte (E/M)

Lamellar bodies



Dust cell



Pneumocyte type II

Fetal lung

