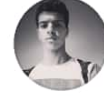


## → ارشيف امبريو ميد

أحدث النشاطات



← Mohammad A Jahameh ارشيف امبريو ميد



٢٠ مارس ٢٠١٨، الساعة ٨:٣٦ ص •

Fertilization occurs normally in :  
Ampulla

اجى بكل امتحان 😂😂😂😂

تعليقان

تعليق

أعجبنى



← Mahmoud Otoom ارشيف امبريو ميد



٢٠ مارس ٢٠١٨، الساعة ١٢:٢٠ ص •

What we commnly know as egg or ovum is actually called

2ry oocyte

One of the following is wrong in relation to gasturulation

During this stage primitive streak is formed

١

تعليق

أعجبنى



← Mahmoud Otoom ارشيف امبريو ميد



٢٠ مارس ٢٠١٨، الساعة ١٢:٠٥ ص •

ركزوا ع الفاكترز

١

تعليق

أعجبنى



← Cyrine Al-Terawi ارشيف امبريو ميد



## → ارشيف امبريو ميد

...

## ← ارشيف امبريو ميد Cyrine Al-Terawi

19 مارس 2018، الساعة 11:47 م



بالله مستنيين من دفعة معها ربع يوم تدرس فيه امبريو تعمل ارشيف 🤔🤔

Ward Ahmad Owais و 2 من الأشخاص الآخرين 😂

تعليق

أعجيني

...

## ← ارشيف امبريو ميد Heba Ibraheem Mubaideen

19 مارس 2018، الساعة 11:09 م



من المواقع 🙌🙌🙌🙌🙌🙌

Ward Ahmad Owais و 2 من الأشخاص الآخرين 😂

تعليق

أعجيني

...

## ← ارشيف امبريو ميد Tareq Manasreh

19 مارس 2018، الساعة 11:05 م



الدفعه بتففل من الموقع اللي انا نزلته  
وهو نفس الموقع اللي ما درستته

Aljayda Adel و 4 من الأشخاص الآخرين 🍷😂

تعليق

أعجيني

...

## ← ارشيف امبريو ميد Heba Mish'al Al-sraireh

19 مارس 2018، الساعة 11:01 م



المواقع ثم المواقع ثم الارشيفات  
هدول اجو اليوم 🌷



(24.0K)

answered  
( )

RECT

Which of the following cells are diploid?

A) secondary oocytes

each question is indicated by a ✓.

The epididymis is a \_\_\_\_\_ and it functions to \_\_\_\_\_.

## → ارشيف امبريو ميد

Aljayda Adel و٤ من الأشخاص الآخرين 🍷😂

تعليق

أعجبنى 👍

...

## ← ارشيف امبريو ميد Heba Mish'al Al-sraireh

19 مارس 2018، الساعة 11:01 م

المواقع ثم المواقع ثم الارشيفات  
هدول اجو اليوم 🌸

Which of the following cells are diploid?

A) secondary oocytes

B) secondary spermatocytes

C) primary spermatocytes

D) spermatids

Feedback: Correct Answer

Final maturation of sperm cells occurs in the

A) epididymis

B) seminiferous tubules

C) prostate gland.

D) urethra

Feedback: Correct Answer

Seminal vesicles produce

A) bulbourethral gland

B) prostate gland

Undifferentiated spermatogenic cells are ca

A) spermatogonia.

B) primary spermatocytes.

C) secondary spermatocytes.

D) spermatids.

Feedback: Correct Answer

Sperm cells are stored primarily in the

A) vas deferens.

B) ejaculatory ducts.

C) epididymis.

The epididymis is a \_\_\_\_\_ and it functions to \_\_\_\_\_.

A) compartment inside a testis; secrete testosterone and form sperm

B) stage of spermatogenesis; form two sperm cells and semen

C) tightly coiled tube on the outside of the testis; store immature sperm as they mature

D) compartment that contains seminiferous tubules; ejaculate sperm and semen

Feedback: Correct Answer

The structure of a testis can be described as composed of

A) lobules that are filled with seminiferous tubules.

B) clitoris.

The glycoprotein layer between the oocyte and the granulosa cells of an ovarian follicle is called

A) theca interna.

B) theca externa

C) antrum.

D) zona pellucida.

Feedback: Correct Answer

Mesovarium

Blood vessels

Primordial follicles

Oocyte

Primary follicles

Granulosa cells

Zona pellucida

C) cervix.

D) vagina.

The cell commonly called the egg, or ovum, is more correctly called a(n)

A) primary oocyte.

B) secondary oocyte. 3+

C) oogonium.

D) zygote.

Feedback: Correct Answer

تعليق

أعجبنى 👍


...

## ← ارشيف امبريو ميد Mohammad Al Rafayah

19 مارس 2018، الساعة 10:45 م





 (24.0K)

CORRECT

Which of the following cells are diploid?

- A) secondary oocytes
- B) secondary spermatocytes
- C) primary spermatocytes
- D) spermatids

**Feedback: Correct Answer**

CORRECT

Final maturation of sperm cells occurs in the

- A) epididymis
- B) seminiferous tubules
- C) prostate gland.
- D) urethra

**Feedback: Correct Answer**

CORRECT

Seminal vesicles produce

- A) sperm cells.
- B) testosterone.
- C) fructose-rich fluid.
- D) estrogen.

**Feedback: Correct Answer**

UNANSWERED

The normal number of spermatozoa per milliliter of seme

- C) bulbourethral gland
- D) prostate gland

Undifferentiated spermatogenic cells are ca



- A) spermatogonia.
- B) primary spermatocytes.
- C) secondary spermatocytes.
- D) spermatids.

**Feedback: Correct Answer**

Sperm cells are stored primarily in the



- A) vas deferens.
- B) ejaculatory ducts.
- C) epididymis.
- D) seminal vesicles.

**Feedback: Correct Answer**

1 incorrect (1%)

57 unanswered  
(83%)

er for each question is indicated by a ✓.

The epididymis is a \_\_\_\_ and it functions to \_\_\_\_.

- A) compartment inside a testis; secrete testosterone and form sperm
- B) stage of spermatogenesis; form two sperm cells and semen
- C) tightly coiled tube on the outside of the testis; store immature sperm as they mature
- D) compartment that contains seminiferous tubules; ejaculate sperm and semen out of t

**Feedback: Correct Answer**

The structure of a testis can be described as composed of

- A) lobules that are filled with seminiferous tubules



D) clitoris.

The glycoprotein layer between the oocyte and the granulosa cells of an ovarian follicle is called the

A) theca interna.

B) theca externa

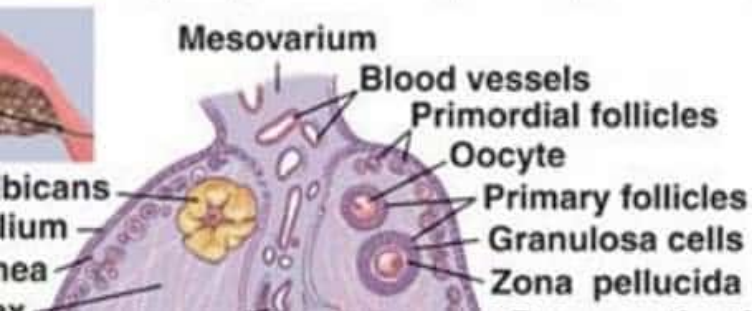
C) antrum.

D) zona pellucida.



Feedback: Correct Answer

© 2011 McGraw-Hill Companies, Inc. Permission required for reproduction or display.



C) cervix.

D) vagina.

The cell commonly called the egg, or ovum, is more correctly called a(n)

A) primary oocyte.



B) secondary oocyte.

C) oogonium.

D) zygote.

**Feedback: Correct Answer**

Copyright © The McGraw-Hill Companies, Inc. Permission required for reproduction or display.

**1 Primordial follicle**

**2 Primary follicle**



- A) elevate the testes during sexual arousal and exposure to cold
- B) generate peristaltic waves in the ductus deferens
- C) control the release of secretions from the seminal vesicles
- D) control the release of sperm cells from the testes into the epididymis

The form (stage) of developing male gamete located nearest to the basement membrane

- A) spermatid
- B) primary spermatocyte
- C) secondary spermatocyte
- D) spermatogonium

**Feedback: Earliest stage.**

Leydig cells are located

- A) in all the male accessory reproductive organs.
- B) interspersed among developing sperm cells in seminiferous tubules.
- C) lining the epididymis and ductus deferens.
- D) in spaces between adjacent seminiferous tubules.

**Feedback: Correct Answer**

The immune system does NOT normally attack spermatogenic cells because

- A) they are recognized as "self" structures.
- B) they do not have any antigens on their cell membranes.
- C) spermatogenic cells are protected by the blood-testis barrier.
- D) the acrosome covers any antigens that would be recognized as foreign.

**Feedback: Correct Answer**

The process of crossing-over, or recombination, of genes occurs during

- A) meiosis I.
- B) meiosis II.
- C) spermiogenesis

- C) degenerates into the corpus albicans.
- D) continues to secrete progesterone until the next ovulation

Following ovulation, a human egg cell can survive approximately

- A) 1 hour
- B) 12 hours
- C) 24 hours
- D) 72 hours



**Feedback: Correct Answer**

About the time of ovulation, the anterior pituitary gland releases a

## ارشيف امبريو ميد →

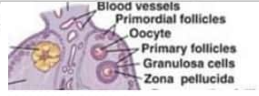
Undifferentiated spermatogenic cells are ca

- ✓  A) spermatogonia.
- B) primary spermatocytes.
- C) secondary spermatocytes.
- D) spermatids.

**Feedback: Correct Answer**

Sperm cells are stored primarily in the

- A) vas deferens.
- B) ejaculatory ducts.
- ✓  C) epididymis.



- C) cervix.
- D) vagina.

The cell commonly called the egg, or ovum, is more correctly called a(n)

- A) primary oocyte.
- ✓  B) secondary oocyte. 3+
- C) oogonium.
- D) zygote.

**Feedback: Correct Answer**

© McGraw-Hill Companies, Inc. Permission required for reproduction or display

Primordial follicle



تعليق

أعجبني



← ارشيف امبريو ميد Mohammad Al Rafayah



19 مارس 2018، الساعة 10:45 م

الاول اشبي الامتحان أغلبو اسئلة من المواقع بتيجي الاسئلة منو حرفي  
ثاني اشبي اسئلة الارشيفات السنوات الي قبل بتتكرر كثير منها ركزو عليها  
ثالث اشبي اغلب الامتحان بكون ع

gametogenesis1+2

تعليق

أعجبني



← ارشيف امبريو ميد Sukaina Walid Madadha



19 مارس 2018، الساعة 10:39 م

مواقع مواقع افري وير

4 تعليقات

Mohd Al Masri و 1 من الأشخاص الآخرين 😄

تعليق

أعجبني