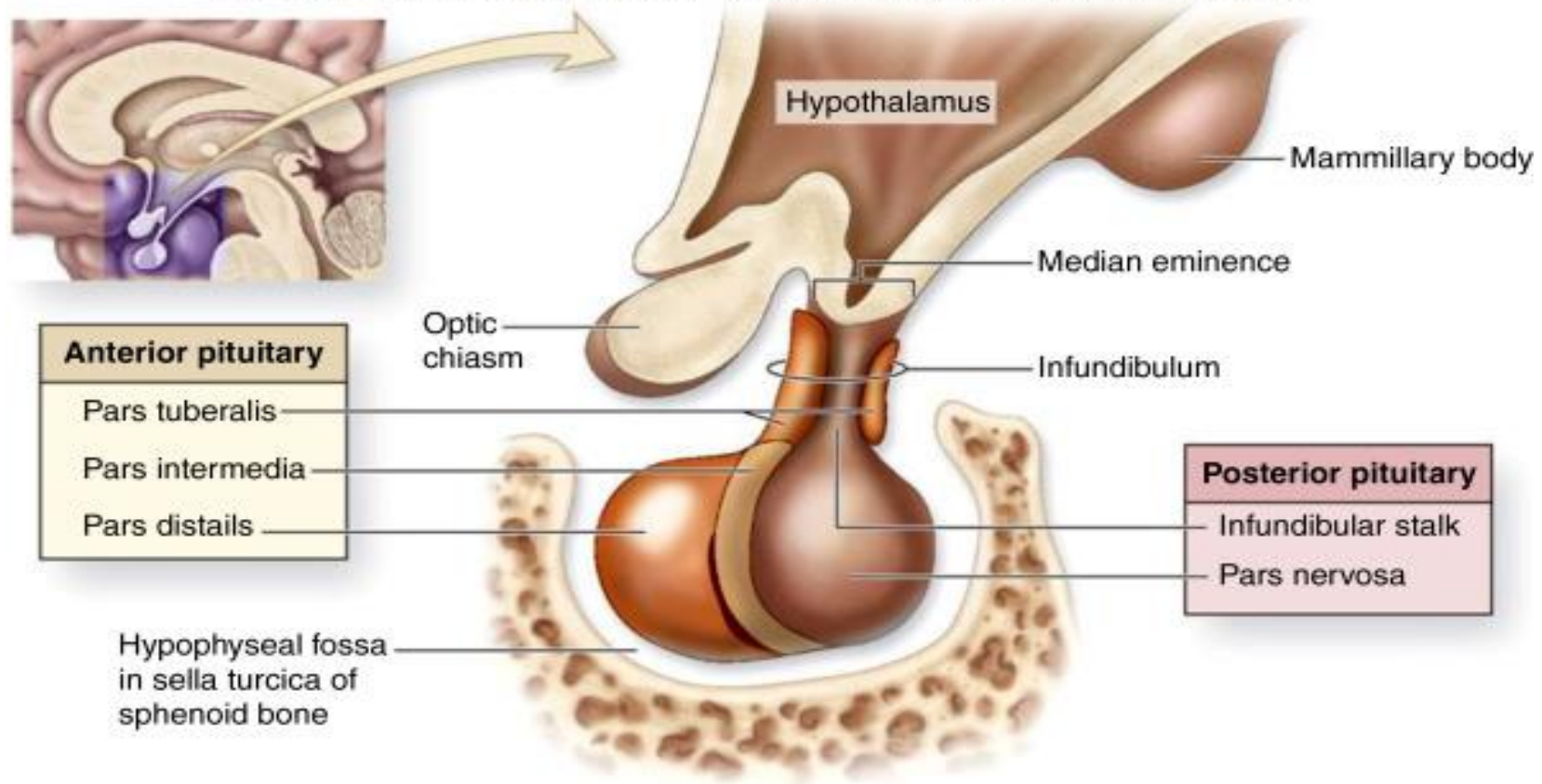


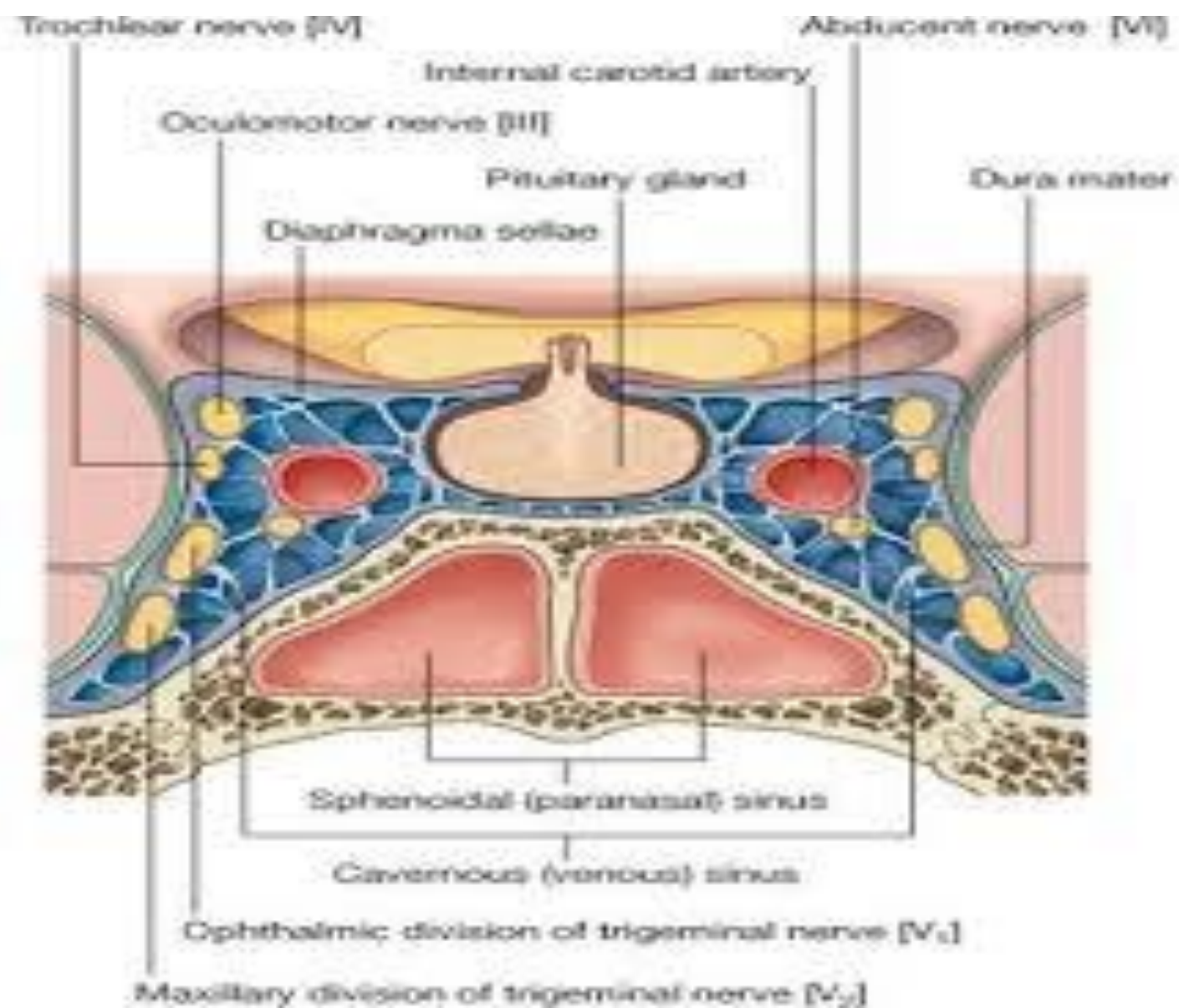
endocrine module

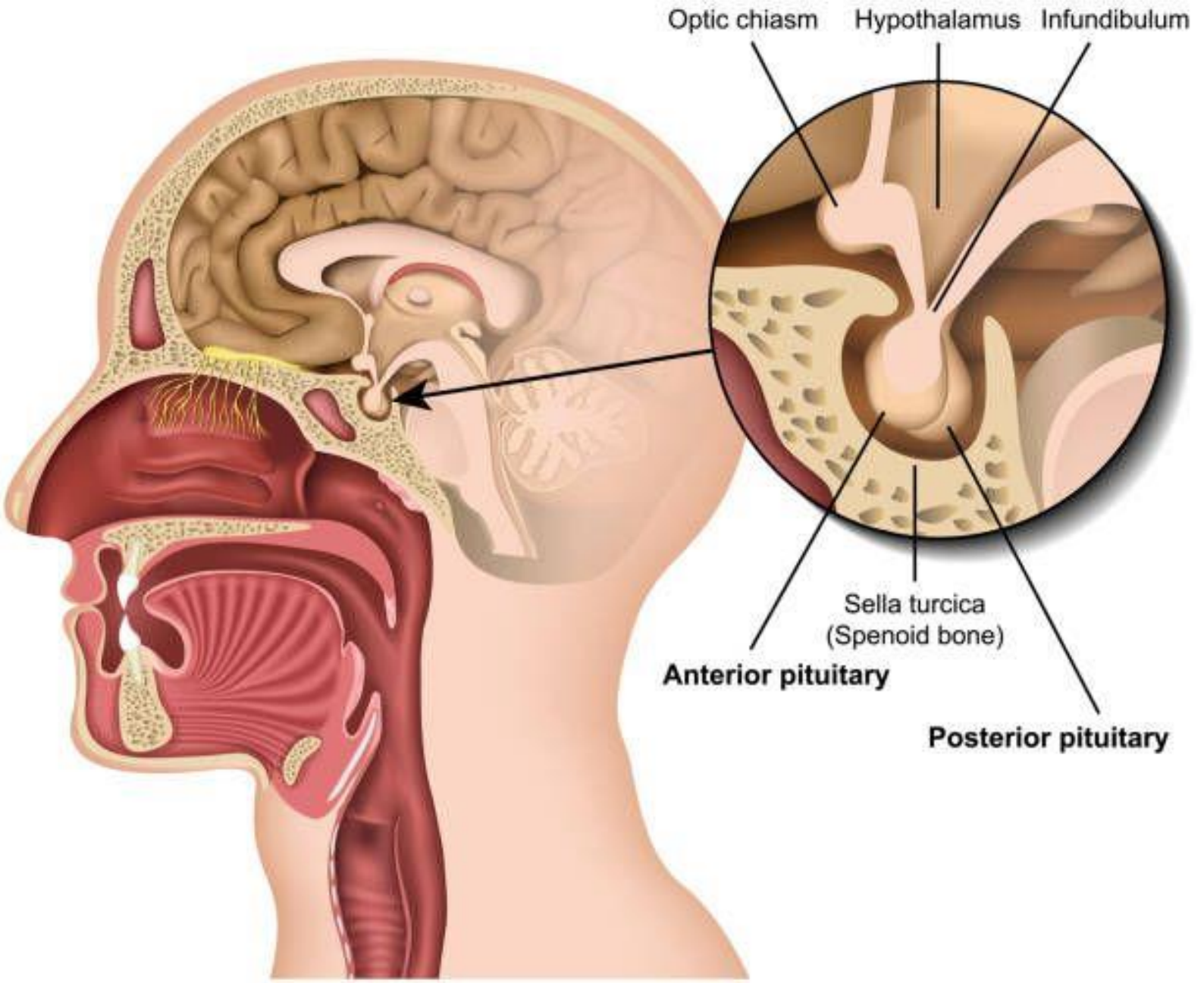
anatomy lab

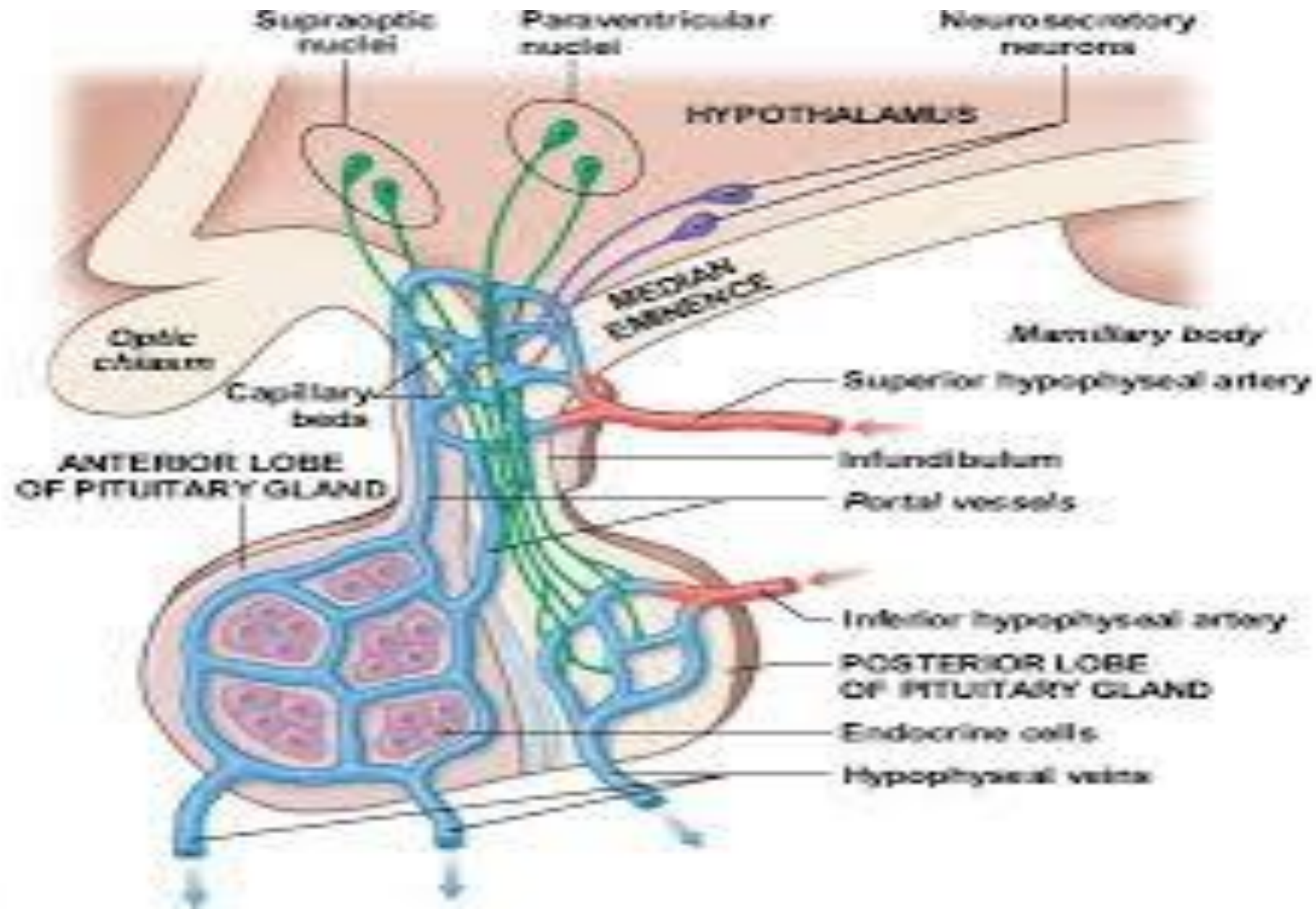
pituitary gland

Copyright © The McGraw-Hill Companies, Inc. Permission required for reproduction or display.

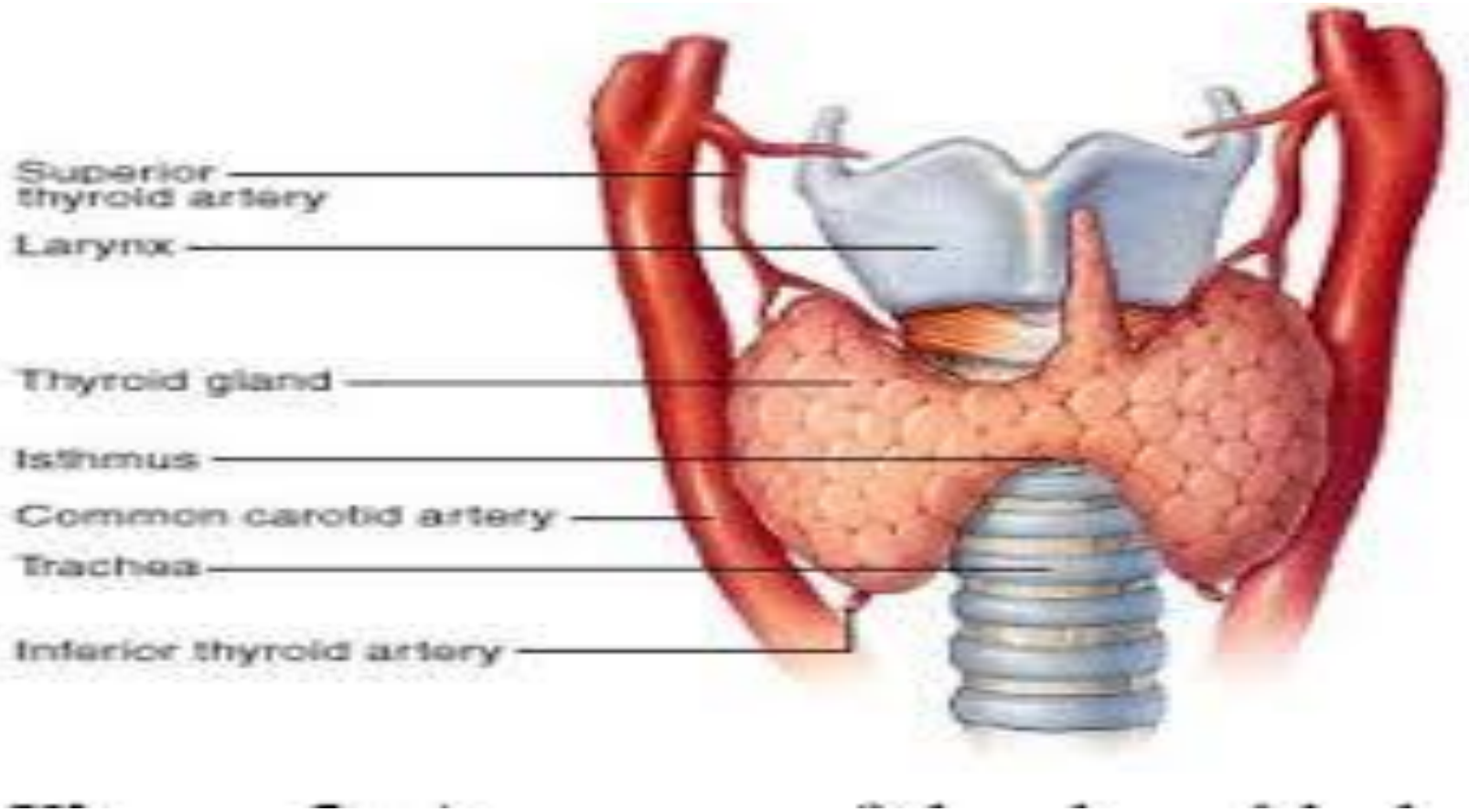


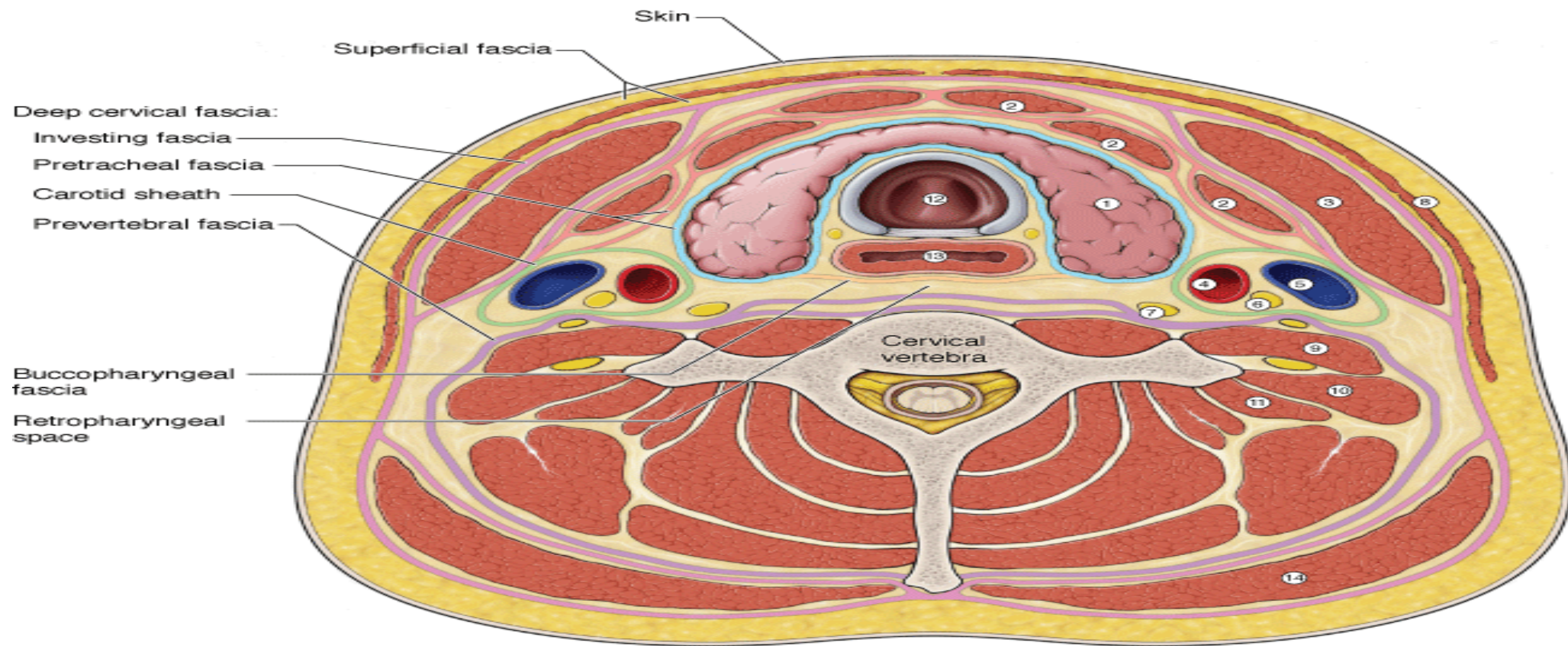






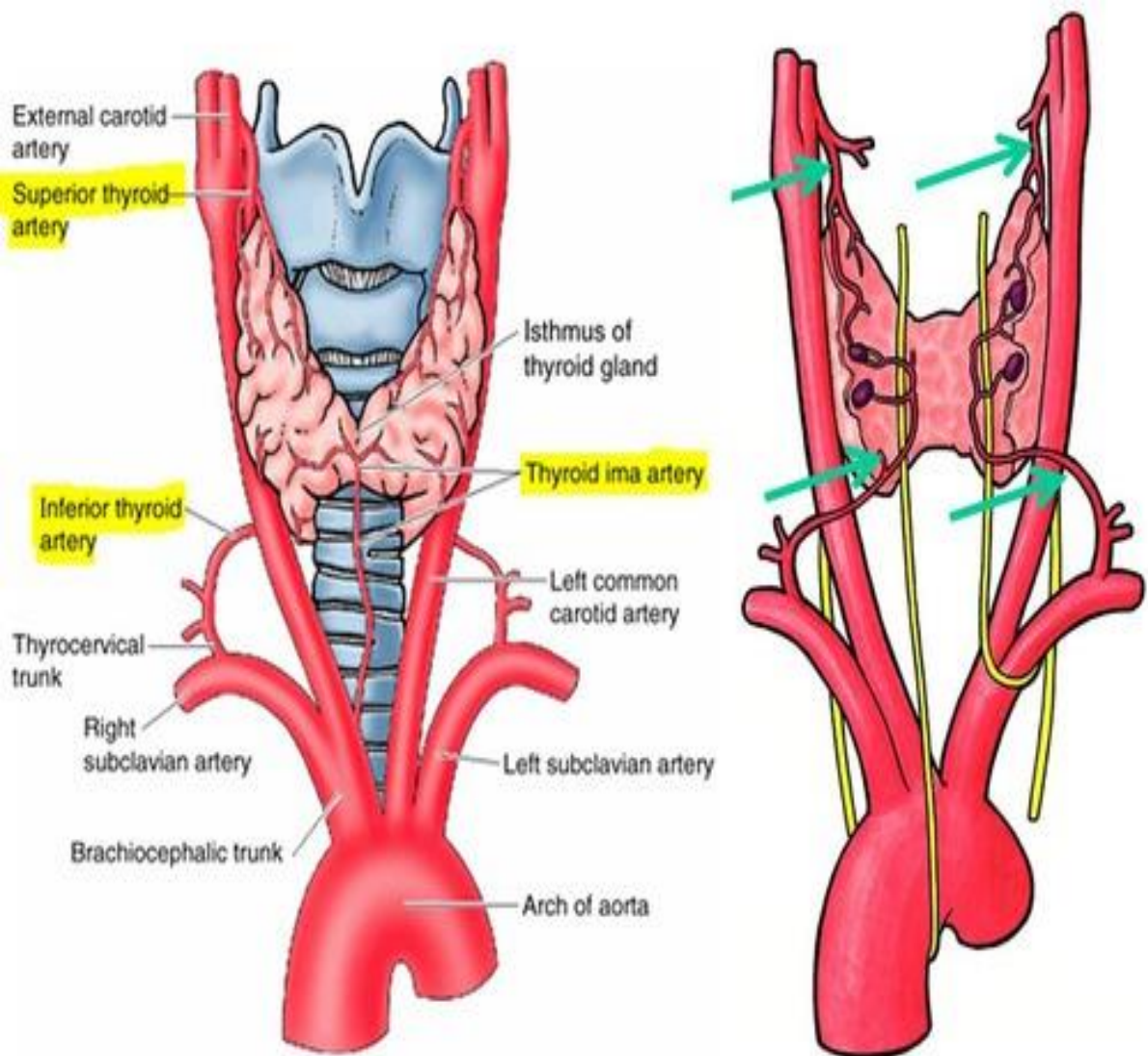
Thyroid gland





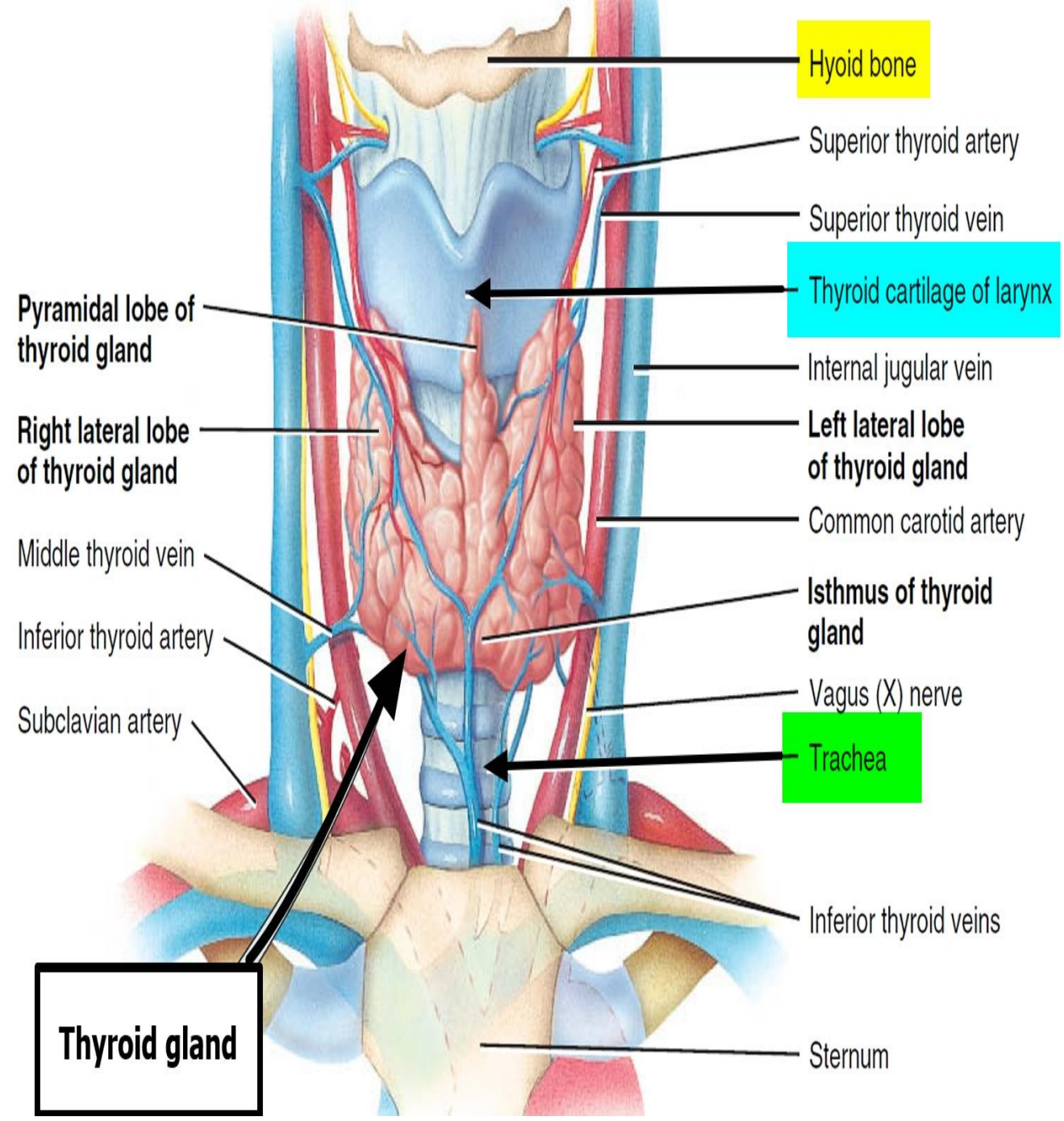
KEY

- | | |
|---------------------------|----------------------|
| 1. Thyroid gland | 8. Platysma m. |
| 2. Infrahyoid mm. | 9. Ant. scalene m. |
| 3. Sternocleidomastoid m. | 10. Mid. scalene m. |
| 4. Common carotid a. | 11. Post. scalene m. |
| 5. Internal jugular v. | 12. Trachea |
| 6. Vagus n. | 13. Esophagus |
| 7. Sympathetic trunk | 14. Trapezius m. |



Anterior view

Posterior view



parathyroid gland

Pharynx

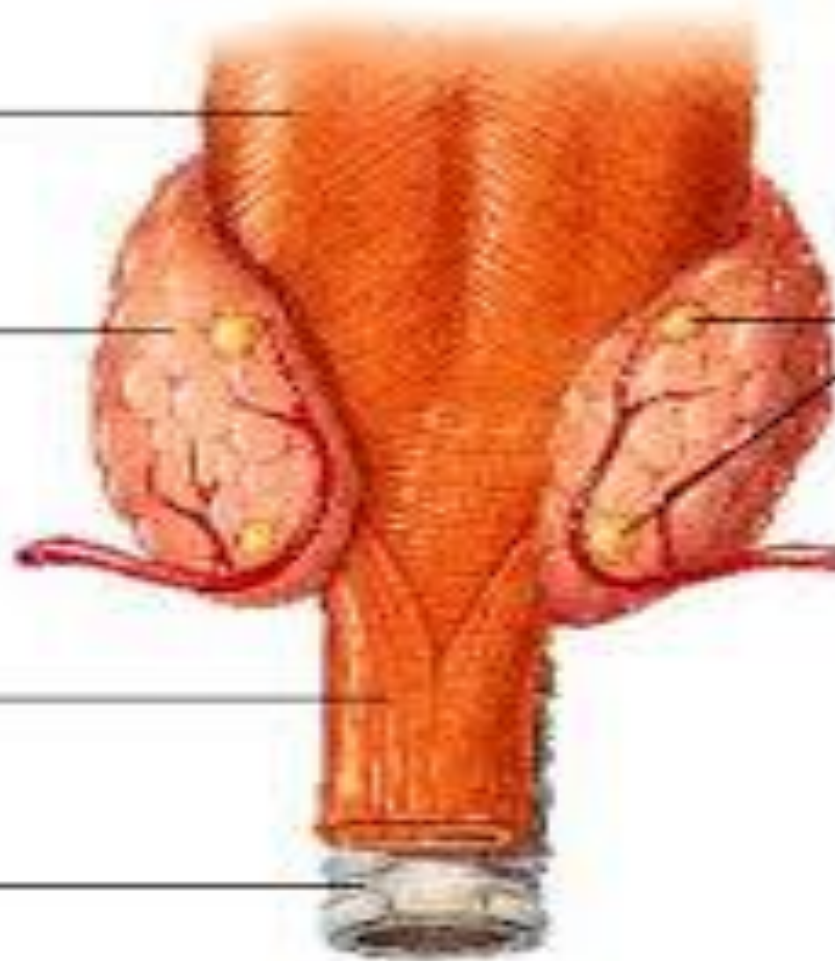
Posterior aspect of thyroid gland

Esophagus

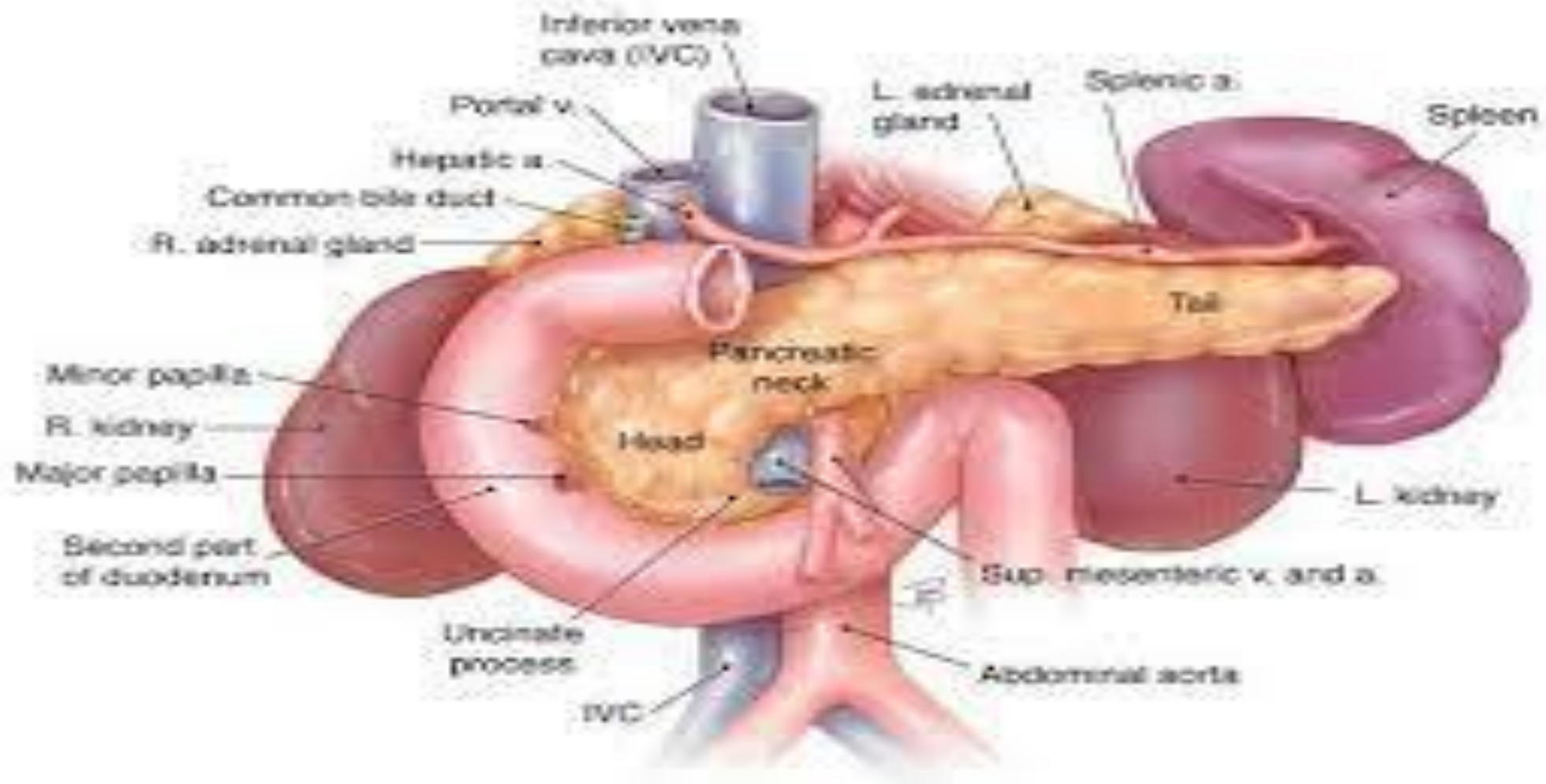
Trachea

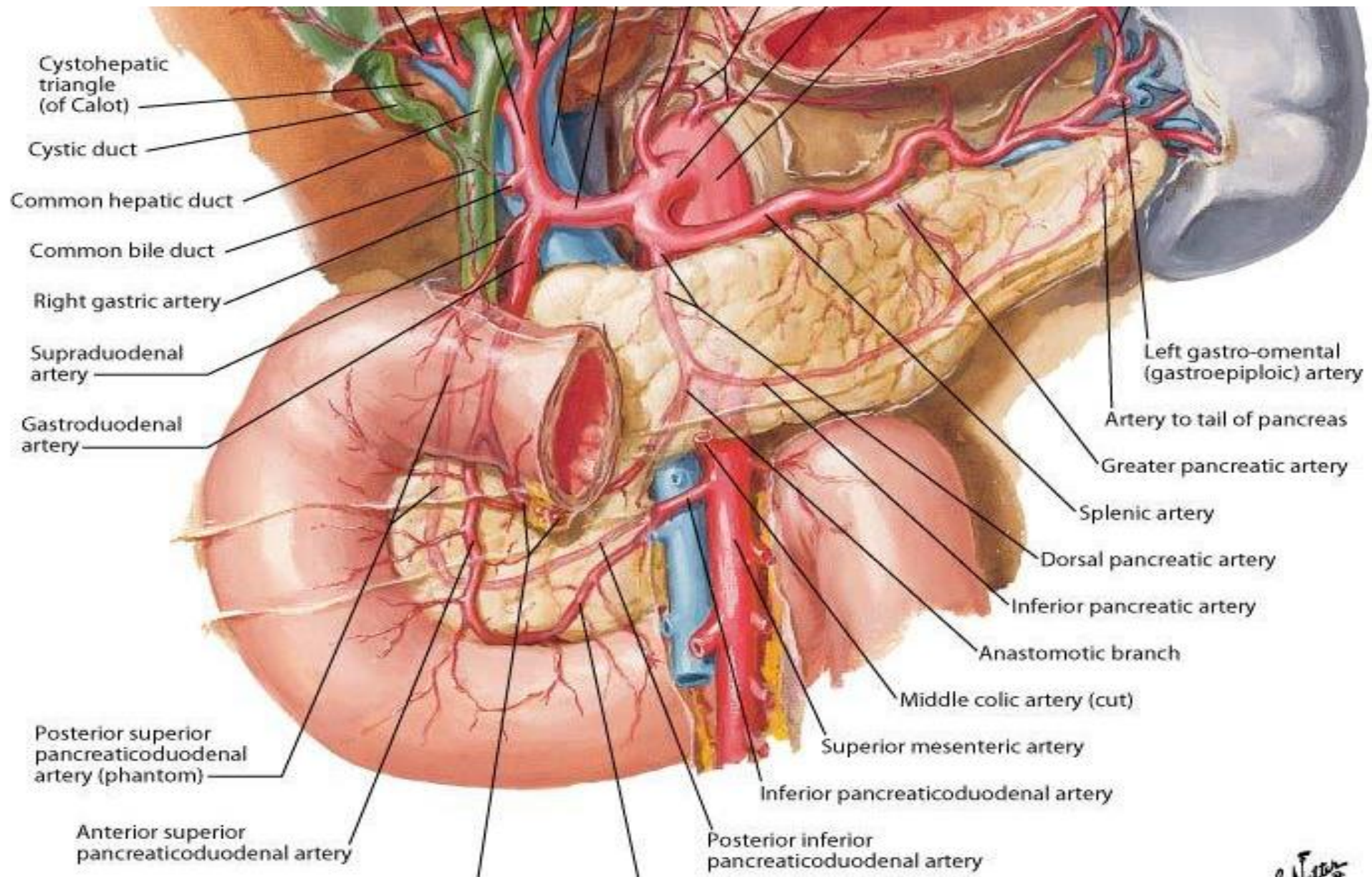
Parathyroid glands

Inferior thyroid artery

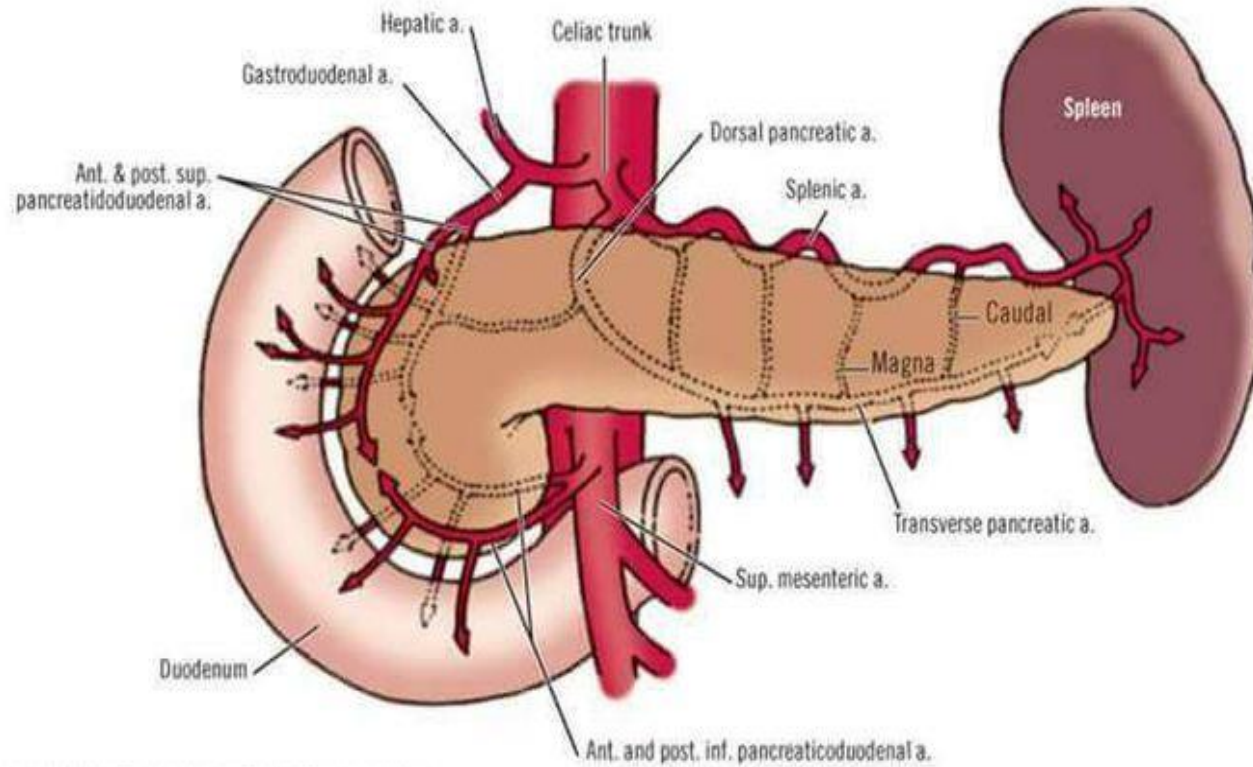


pancreas

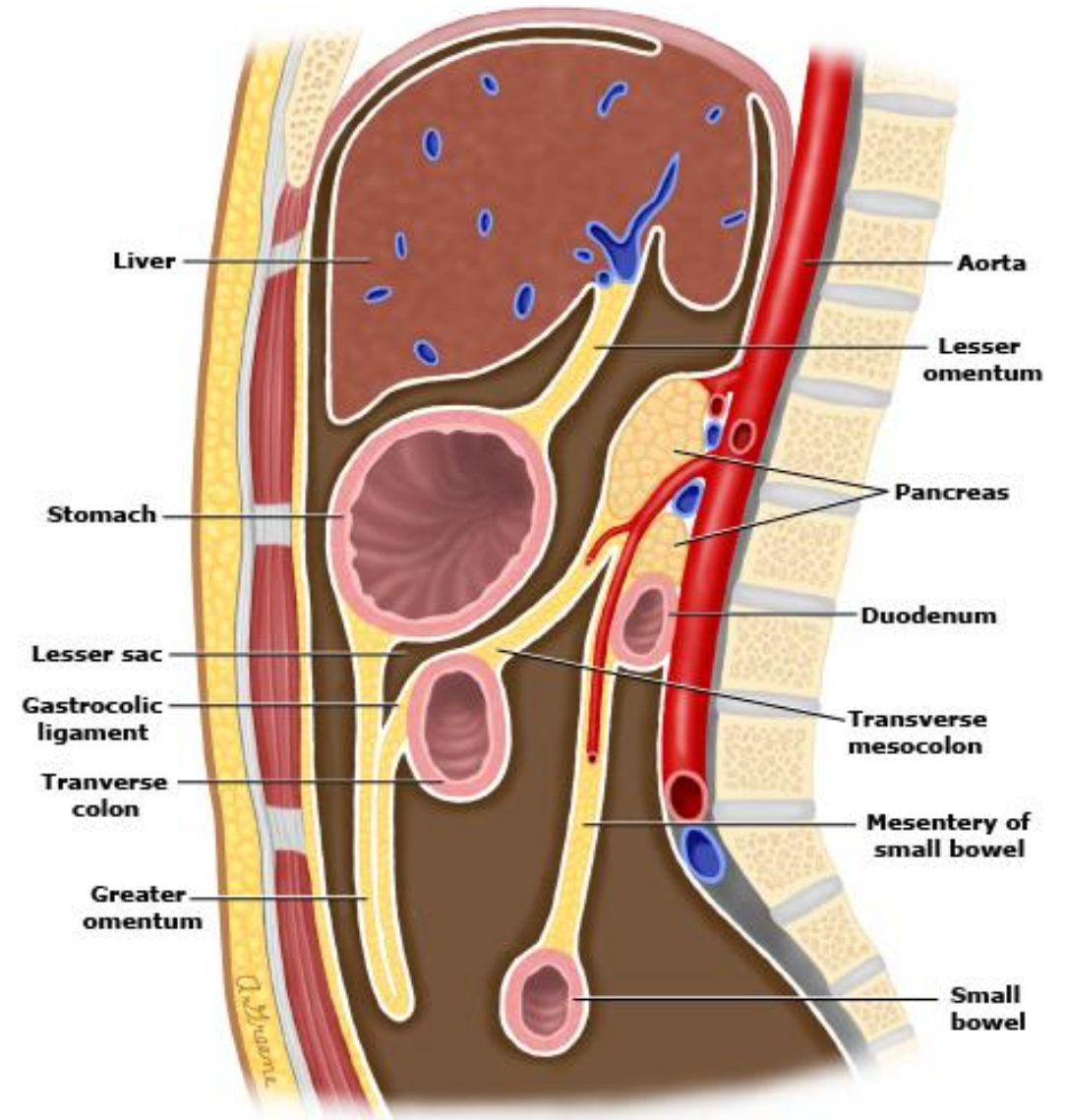




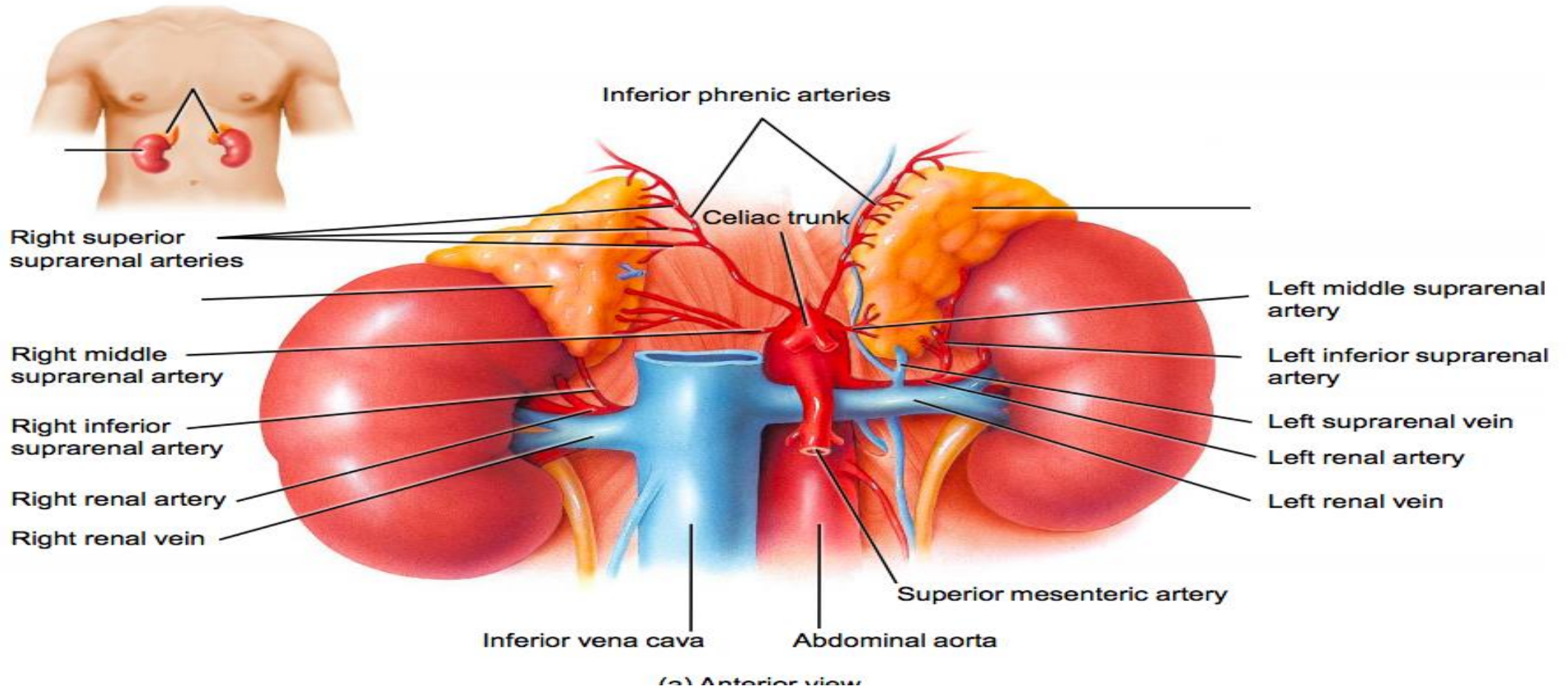
Blood supply of the Pancreas

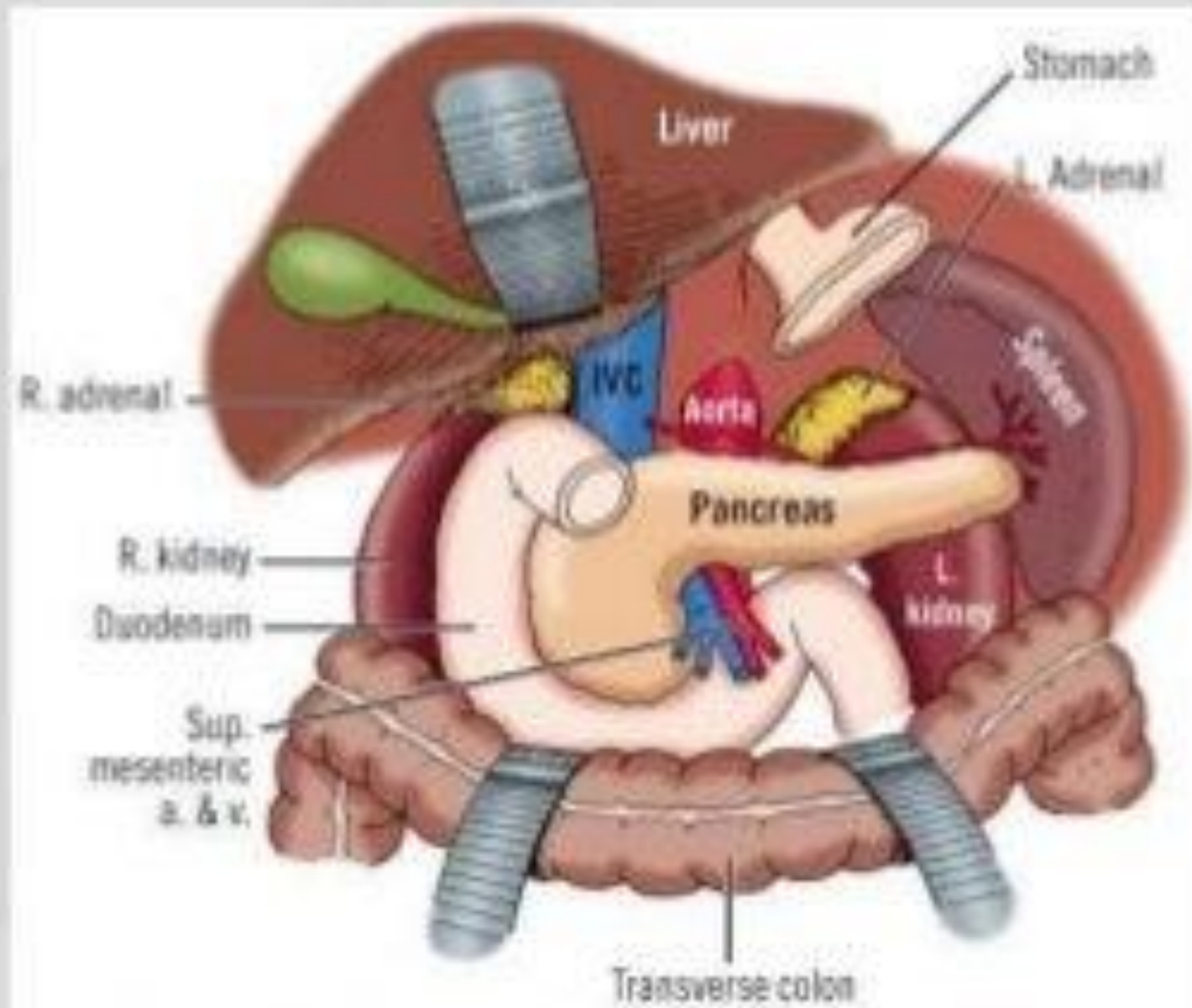


Copyright ©2006 by The McGraw-Hill Companies, Inc.
All rights reserved.



Suprarenal gland





Copyright ©2006 by The McGraw-Hill Companies, Inc.
All rights reserved.

