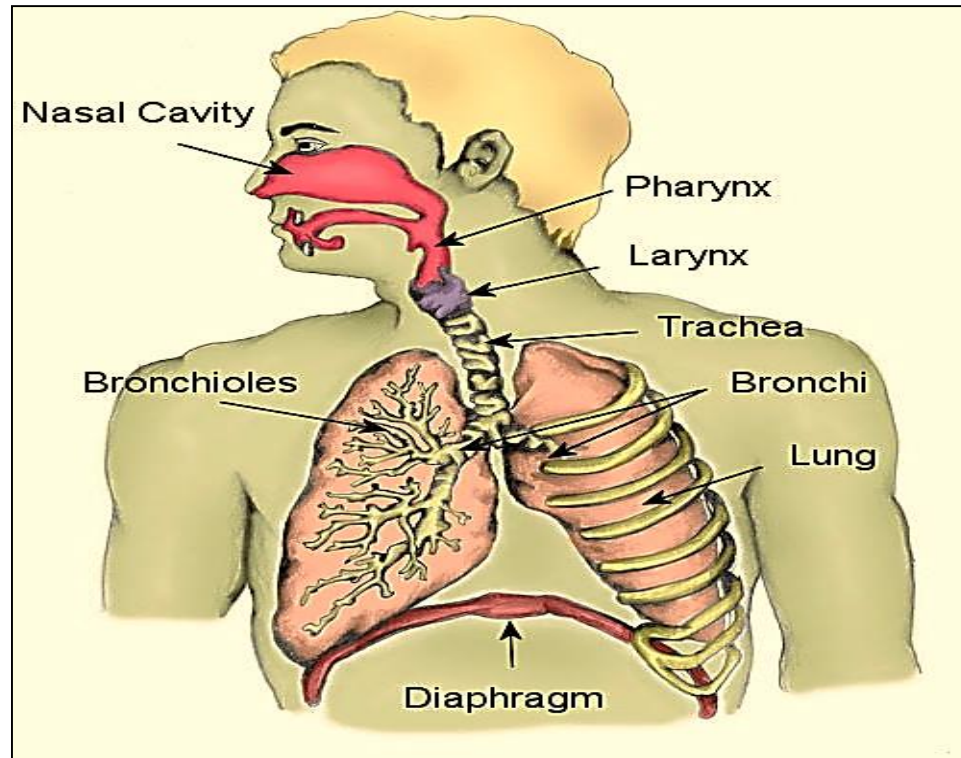
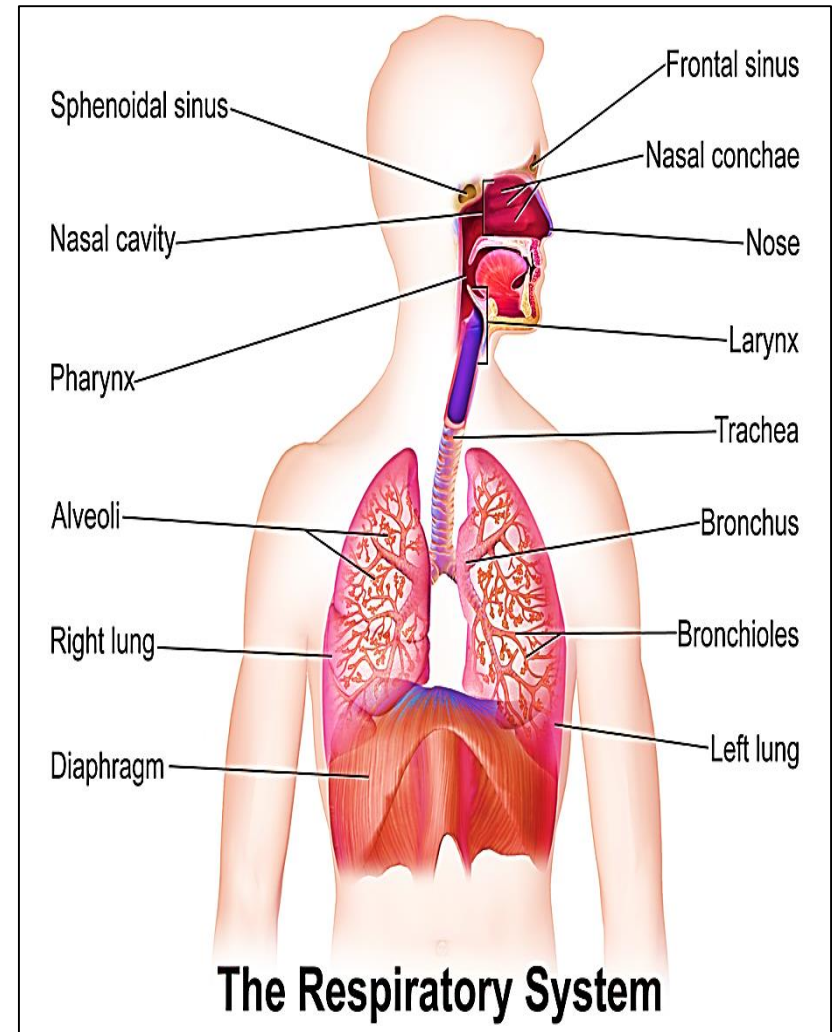


# Respiratory system practical lab, 3<sup>rd</sup> year



## Microscopic slides in the LAB:

- 1- Trachea
- 2- Epiglottis
- 3- Respiratory epithelium
- 4- Olfactory epithelium
- 5- Lung + bronchus  
+ bronchiole
- 6- lung

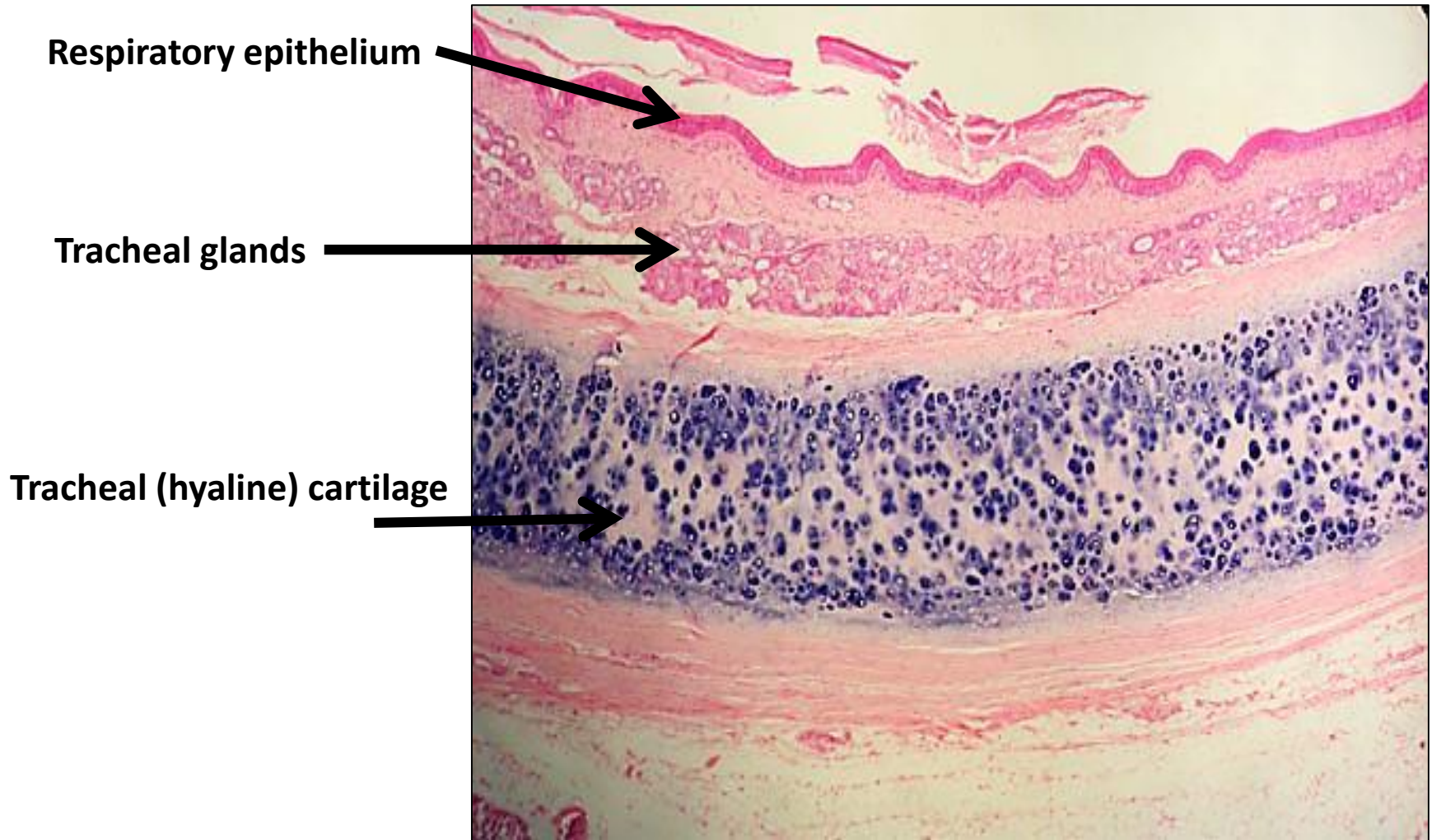


# Trachea & Esophagus

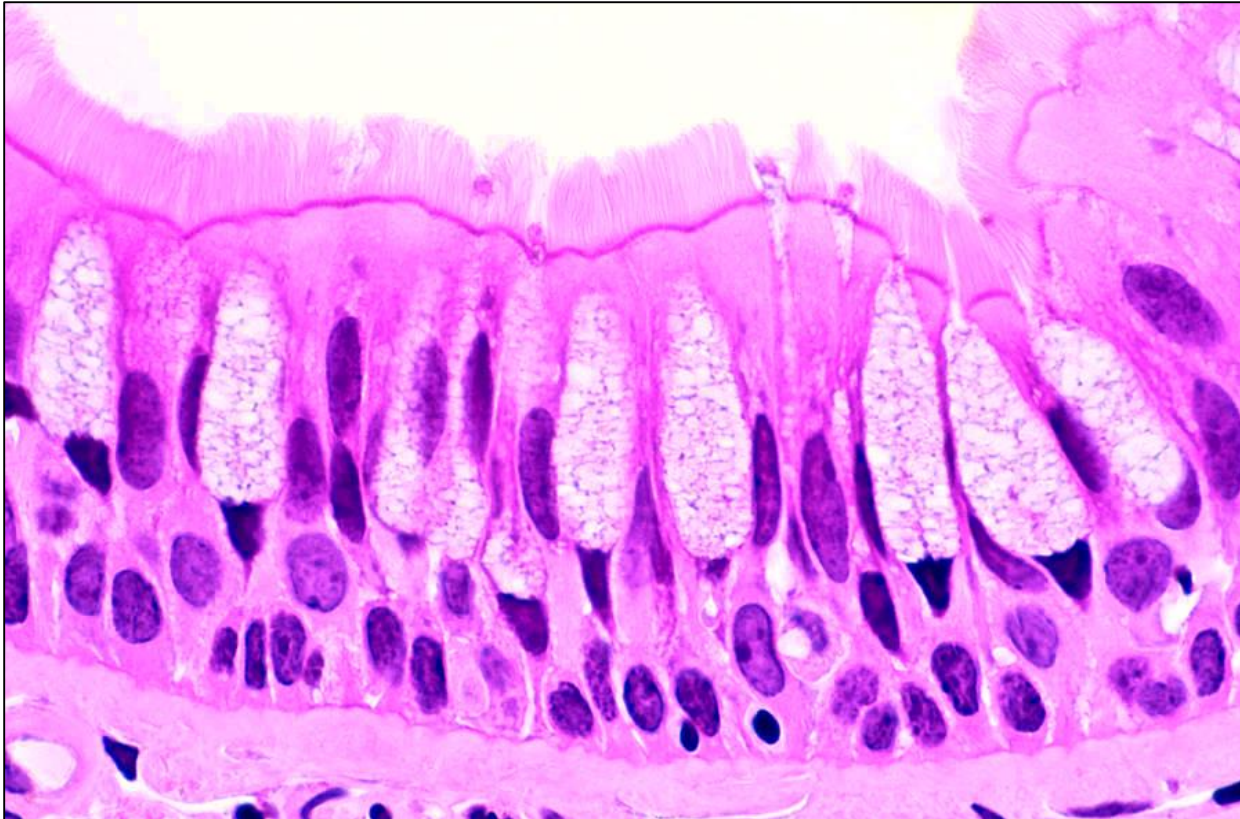




# Cross section in trachea

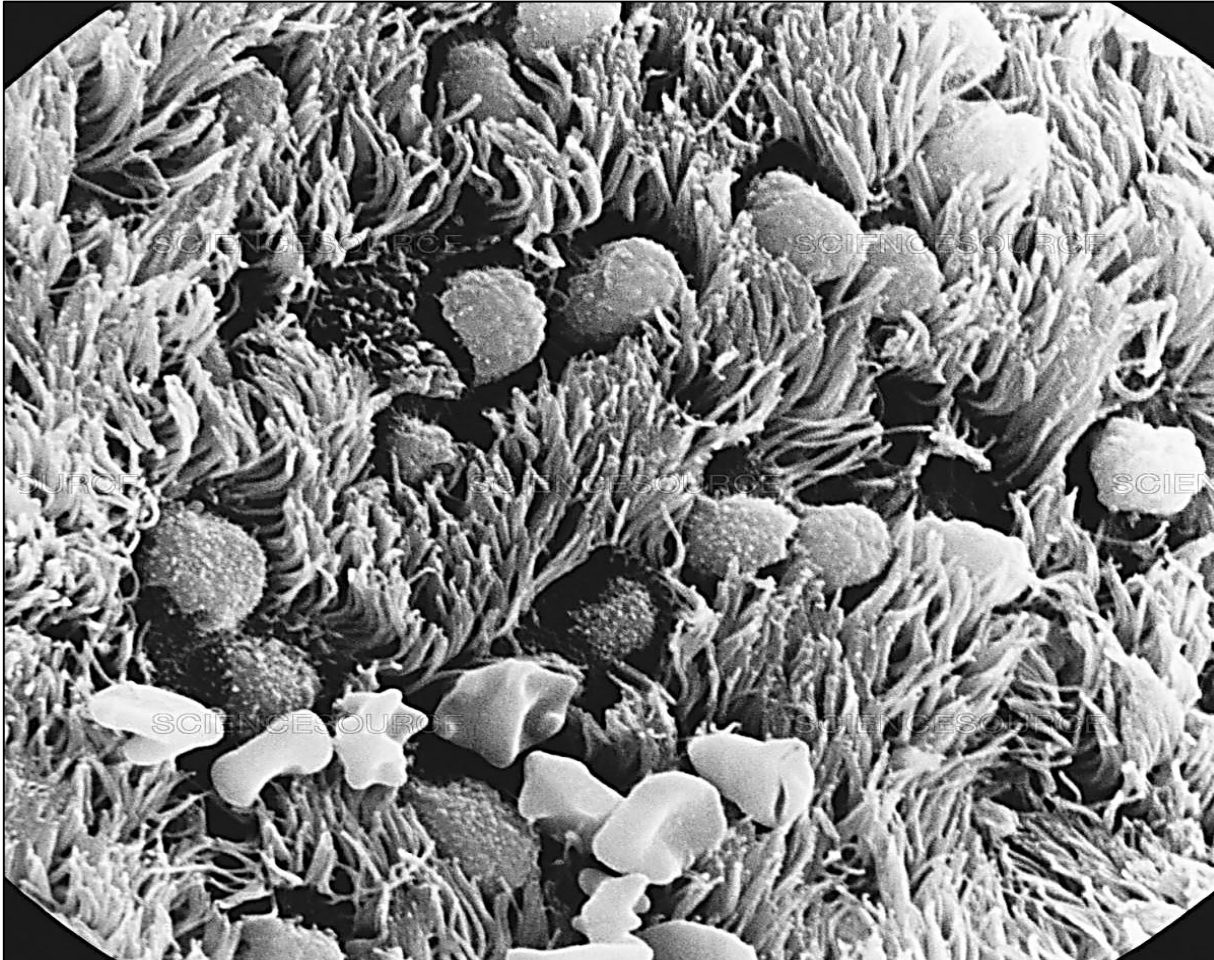


# Respiratory epithelium



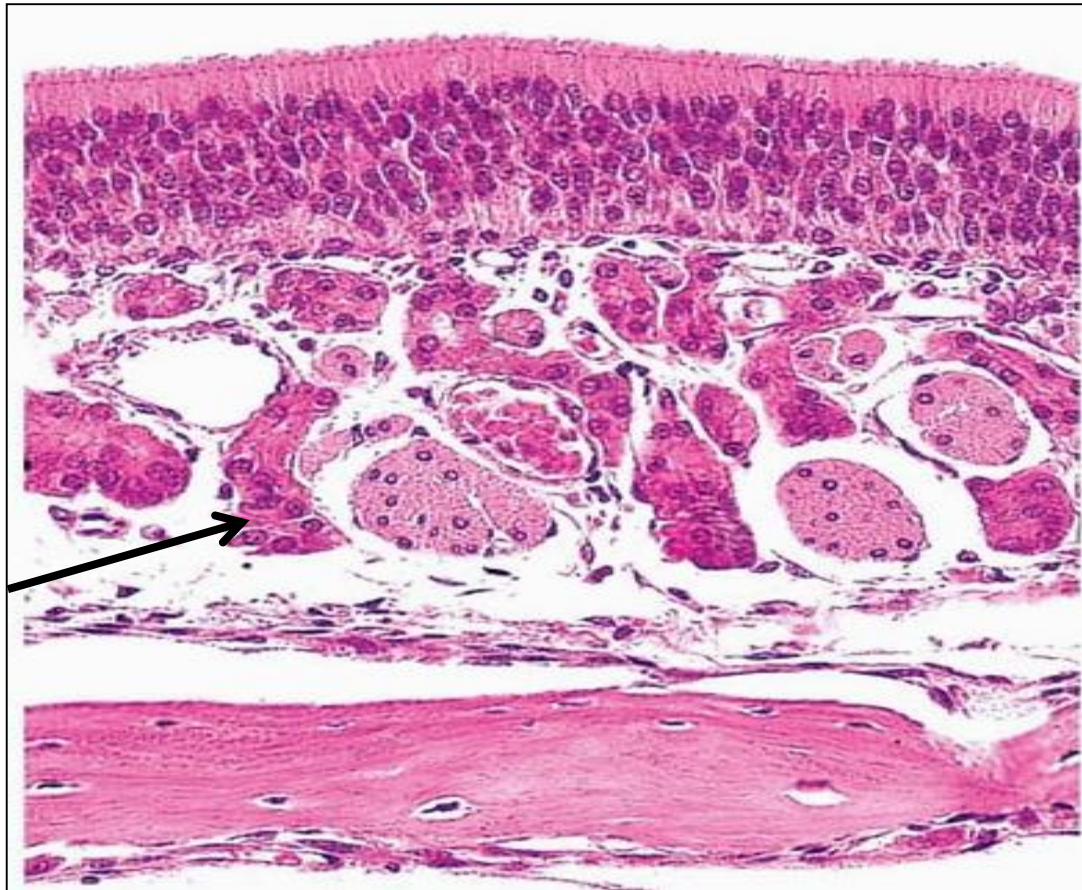
**Pseudo stratified columnar ciliated with goblet cells**

# SEM of respiratory epithelium





# Olfactory epithelium

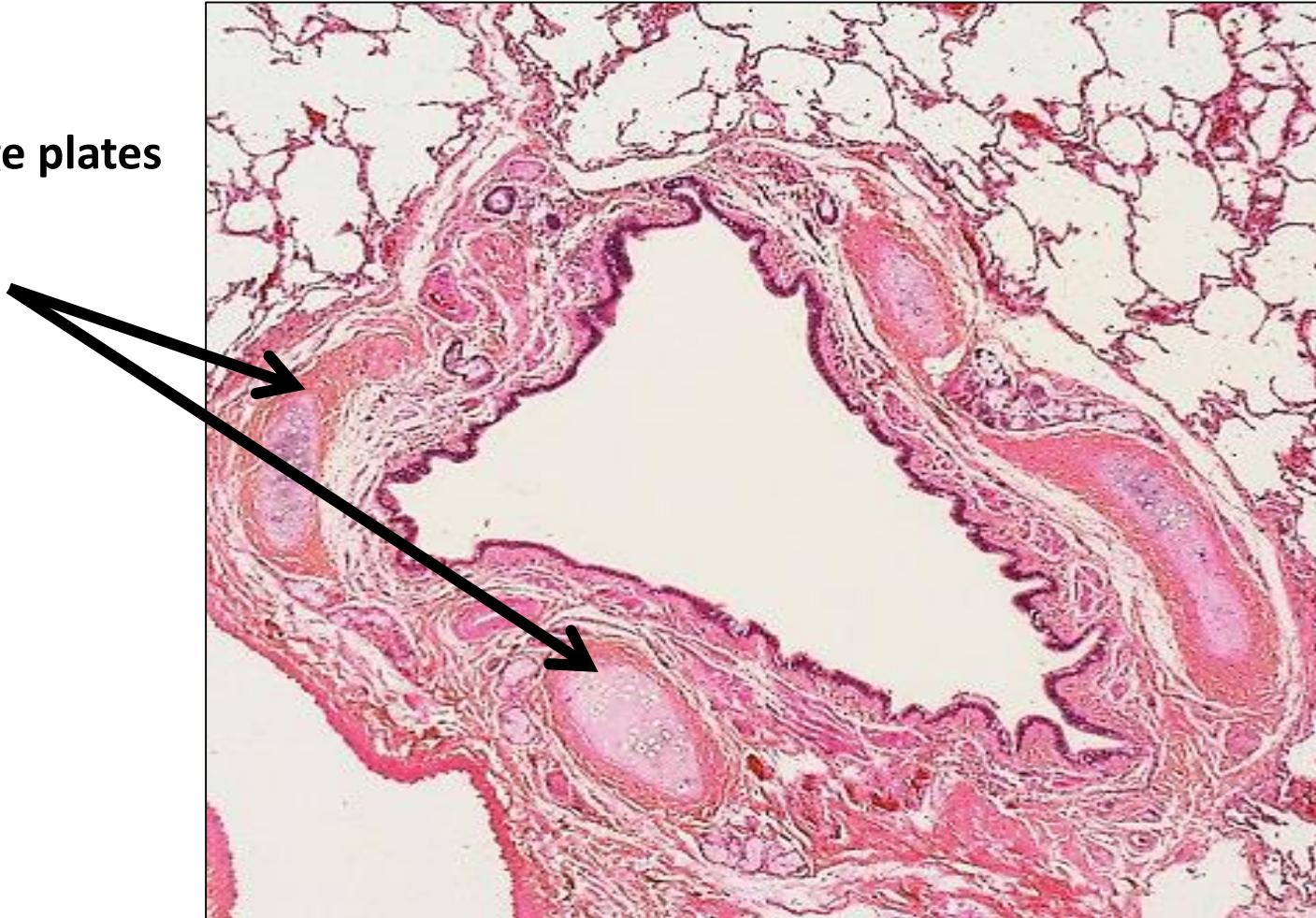


Bowman's gland

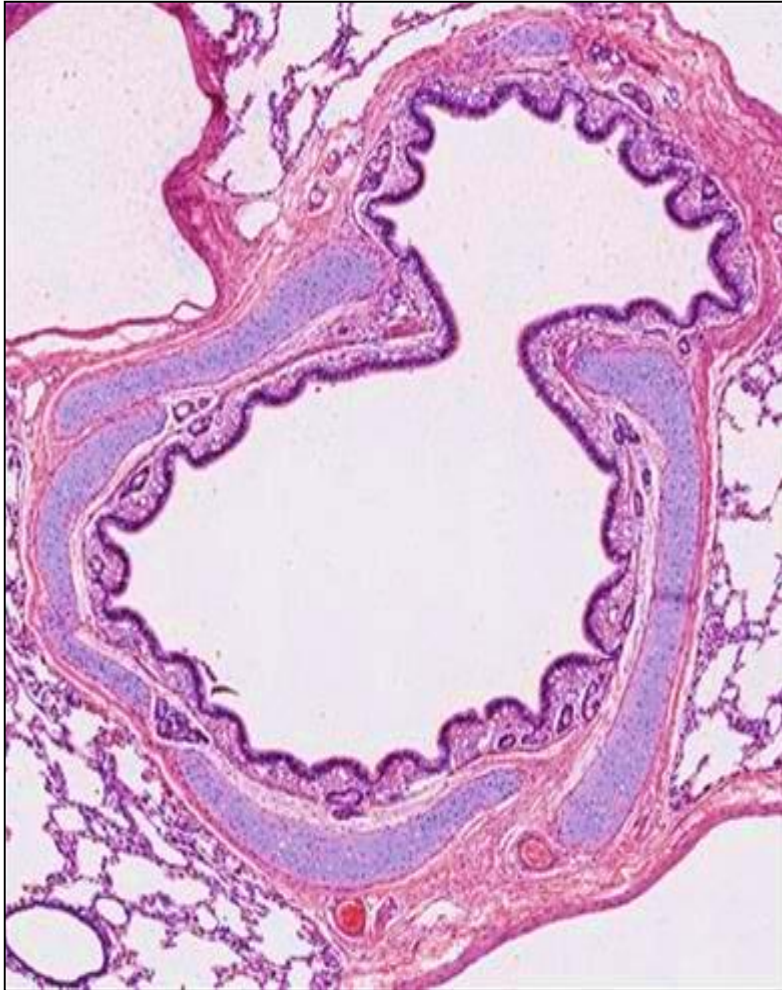
Pseudo-stratified columnar with chemoreceptors

# Bronchus

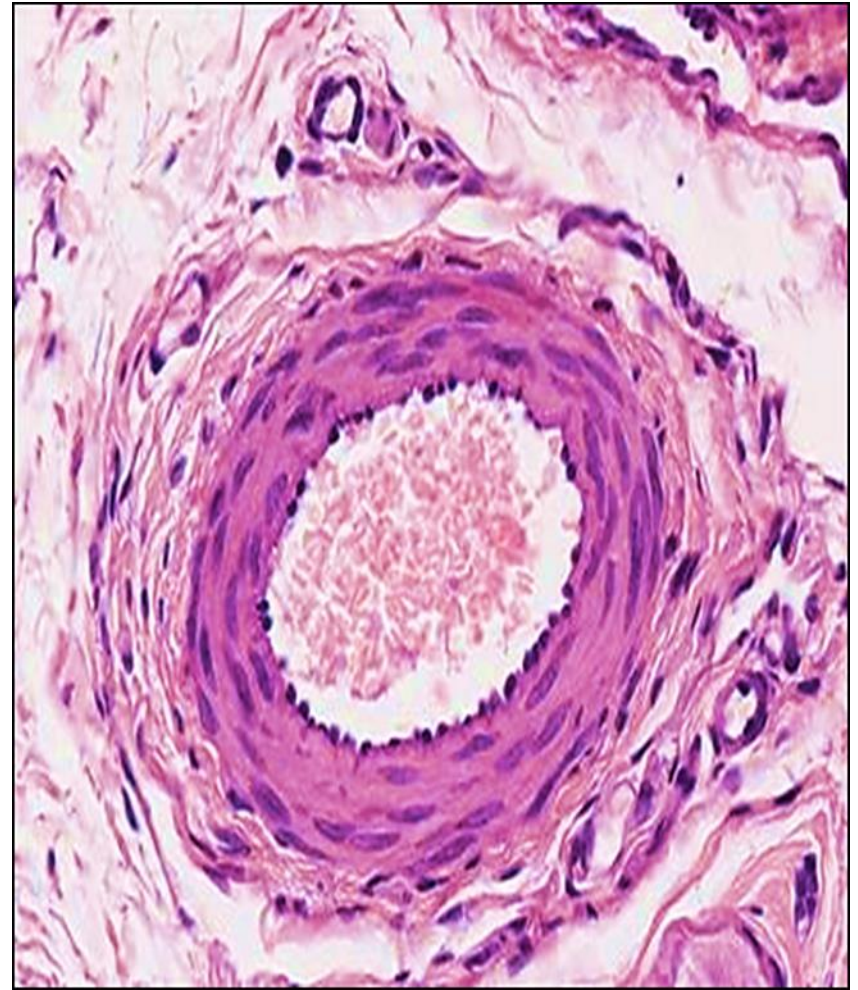
**Cartilage plates**







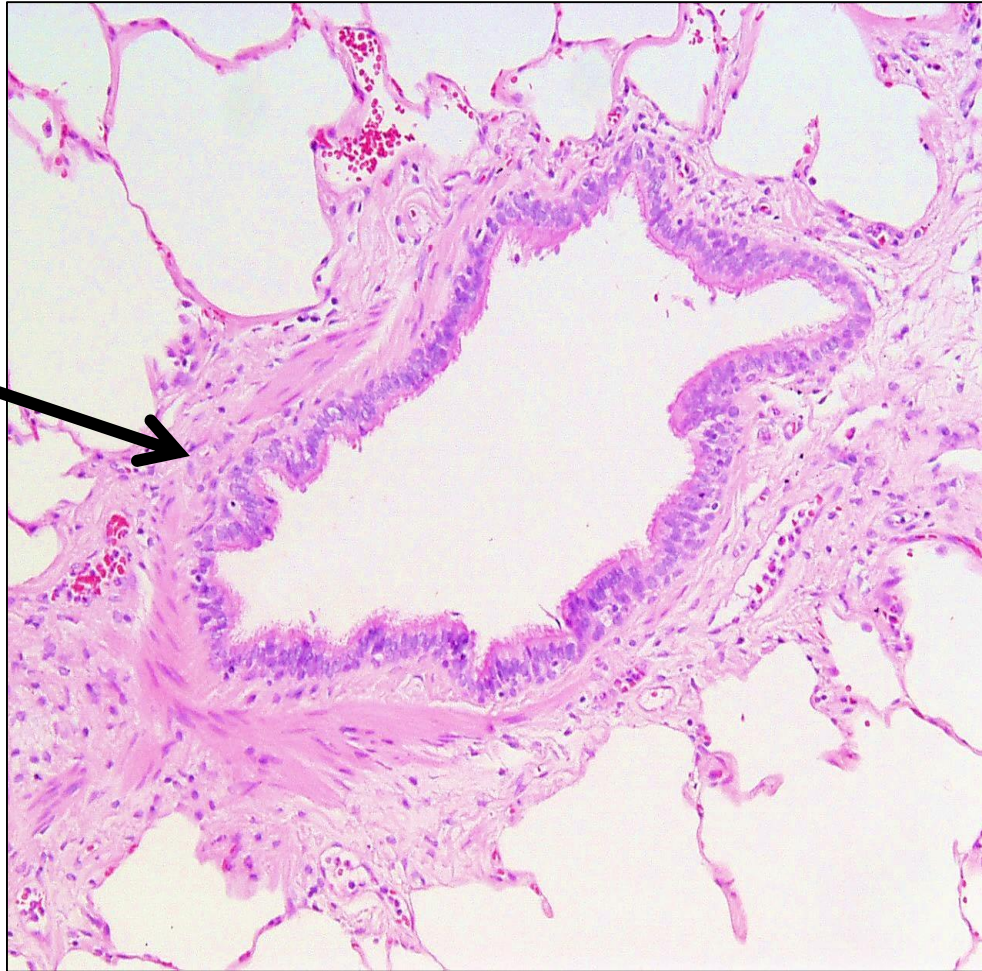
Bronchus



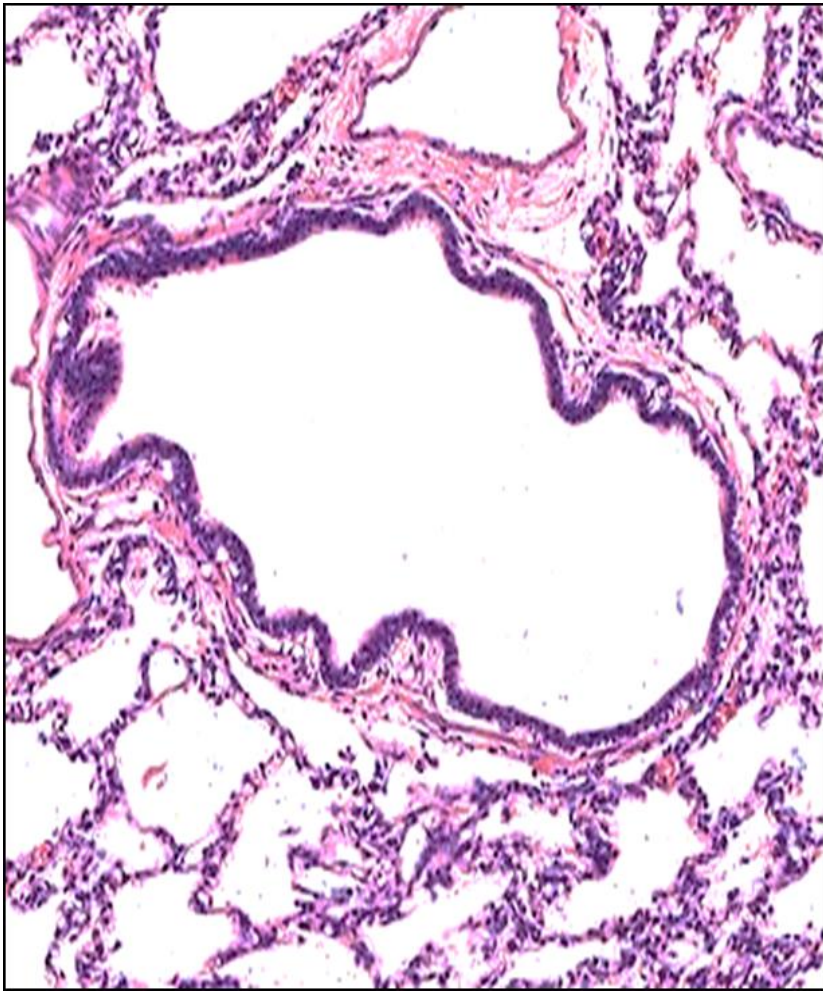
Blood vessel

# Bronchiole

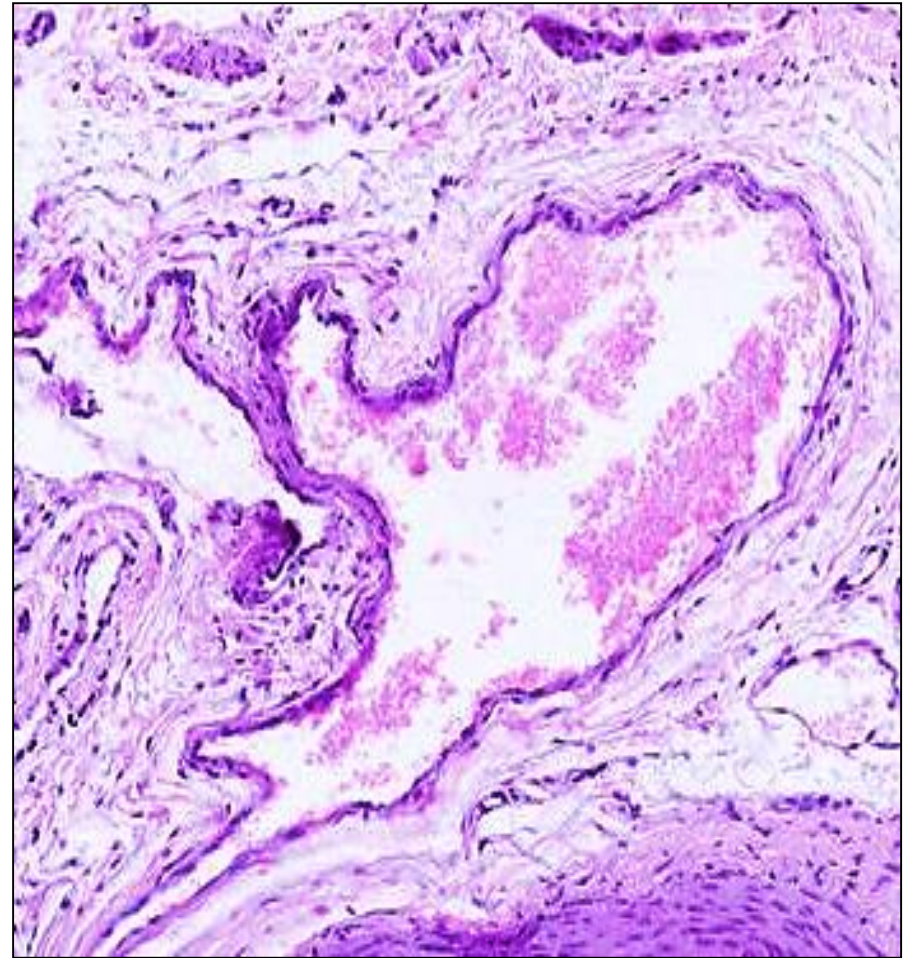
Layer of circularly  
arranged  
smooth muscle





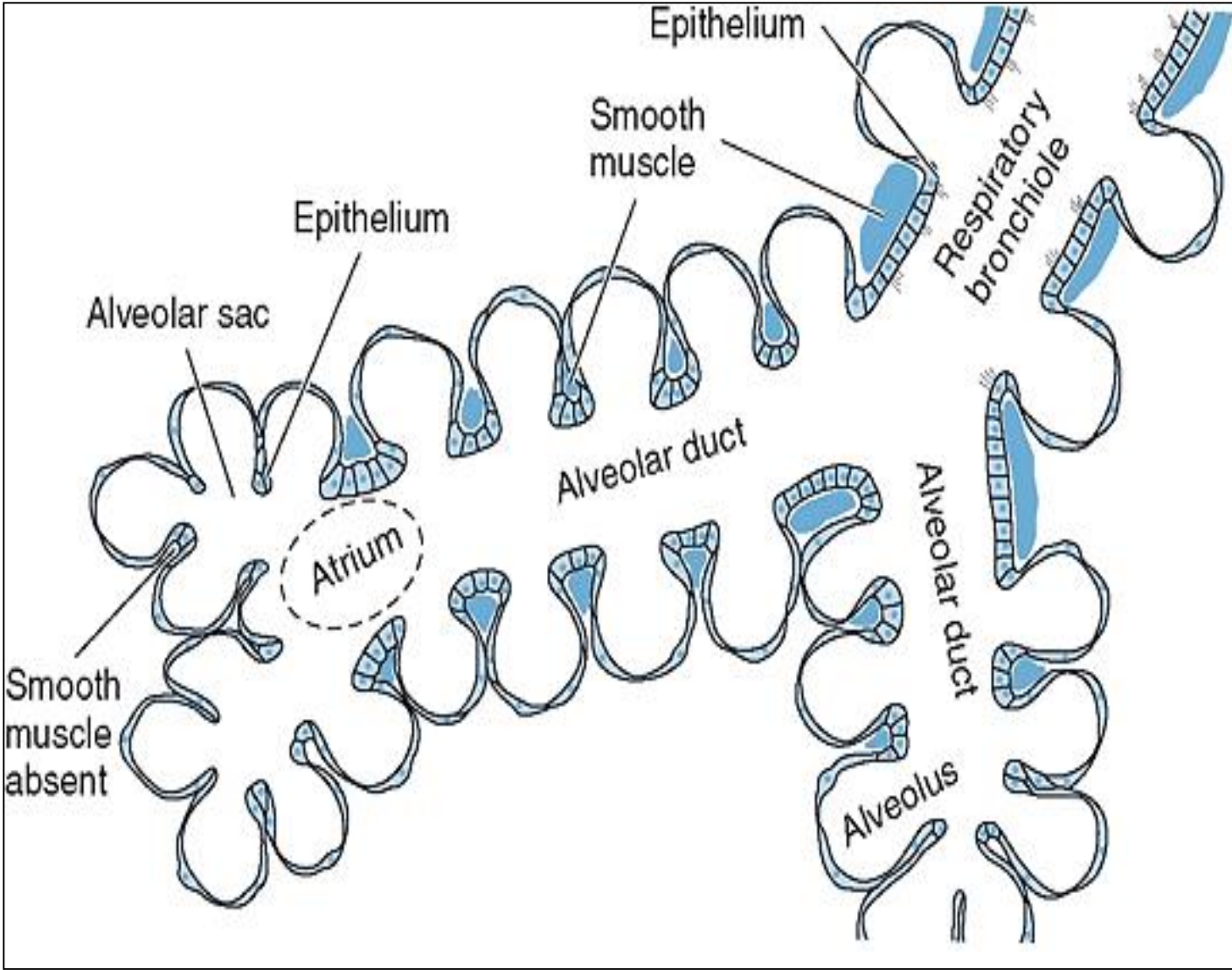


bronchiole

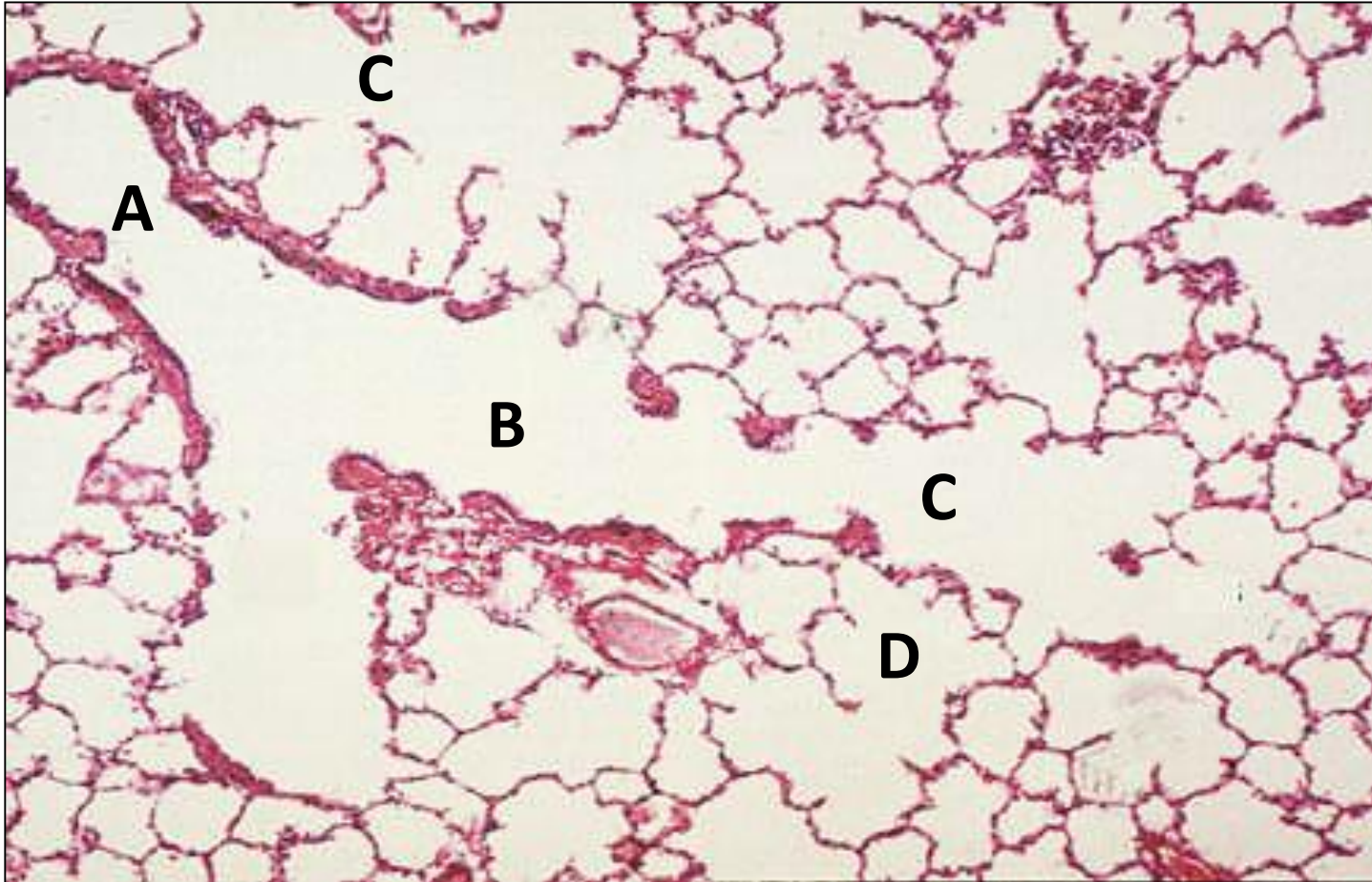


Blood vessel





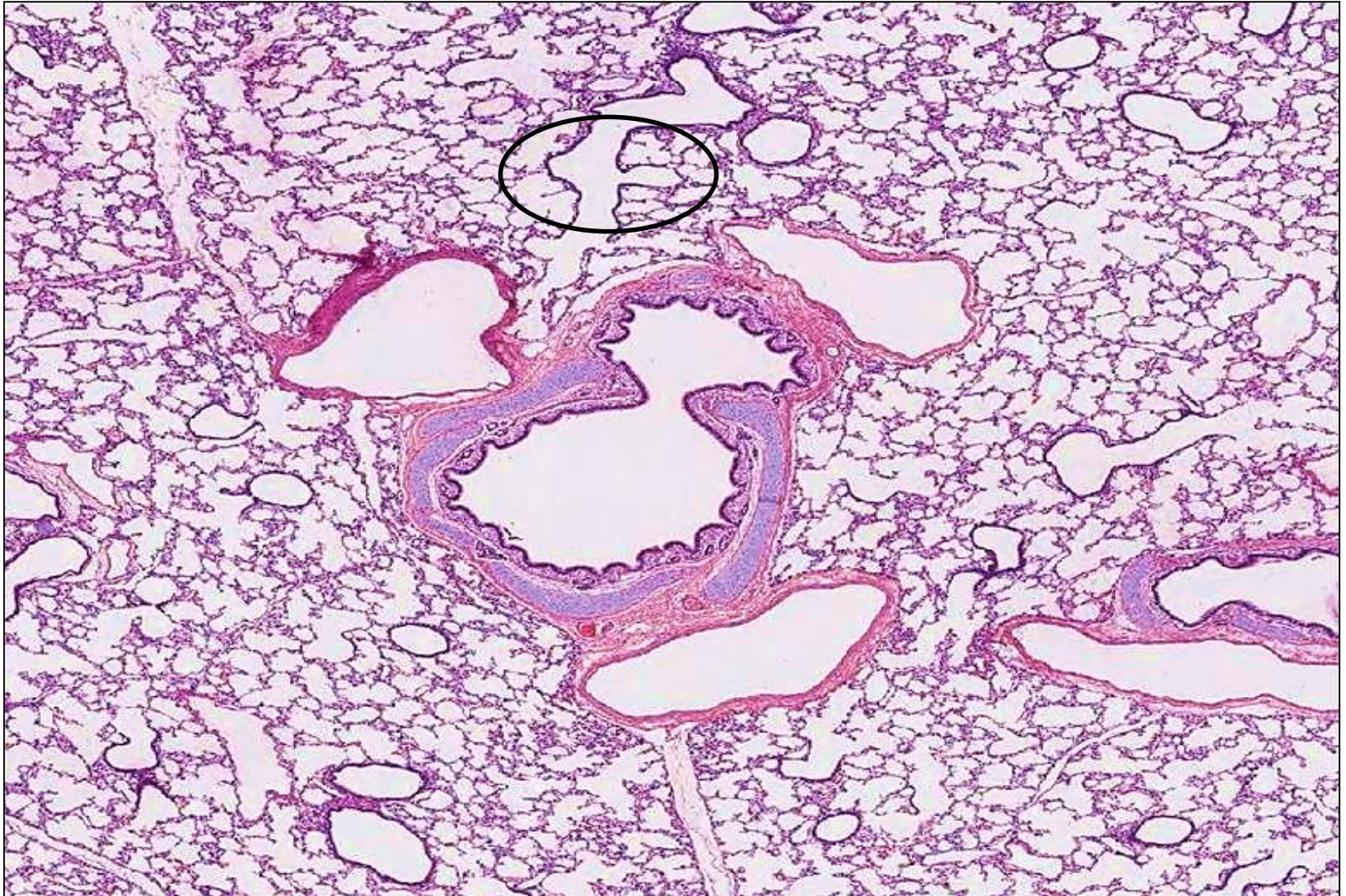
# Section in lung



- A: Terminal bronchiole**
- B: Respiratory bronchiole**
- C: Alveolar duct**
- D: Alveolar Sac**

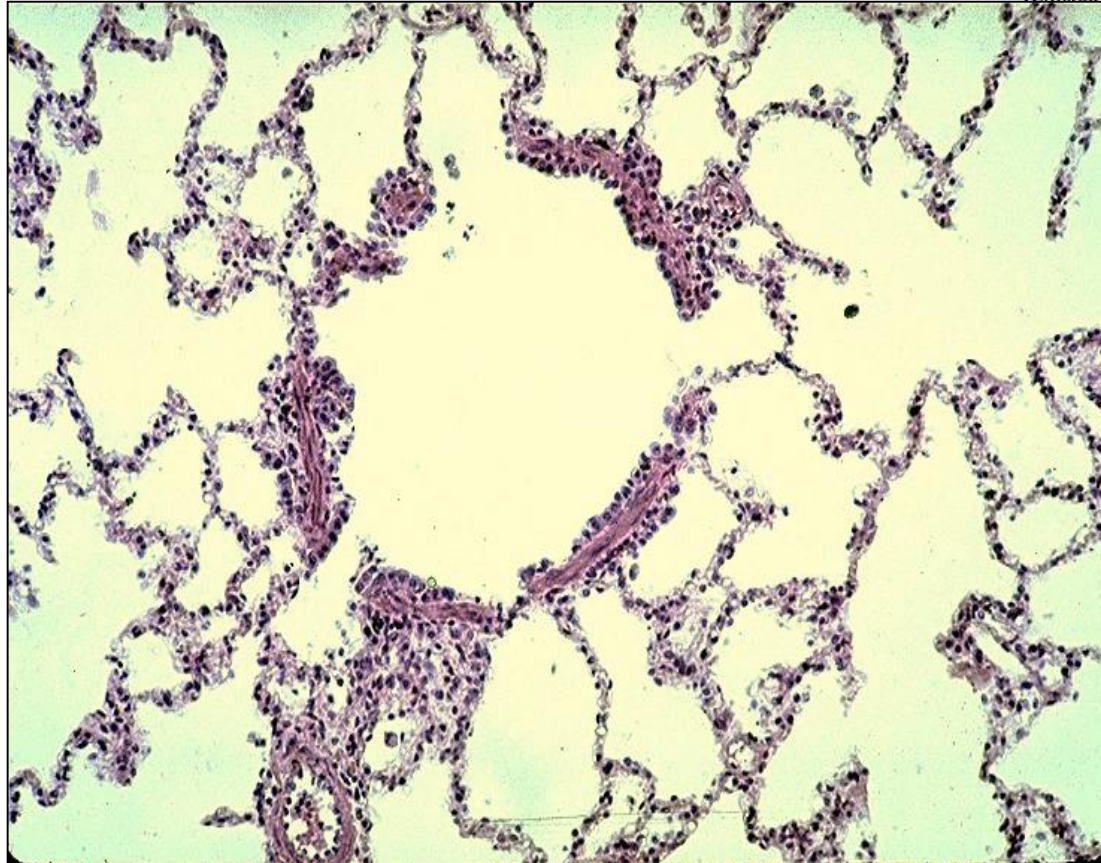
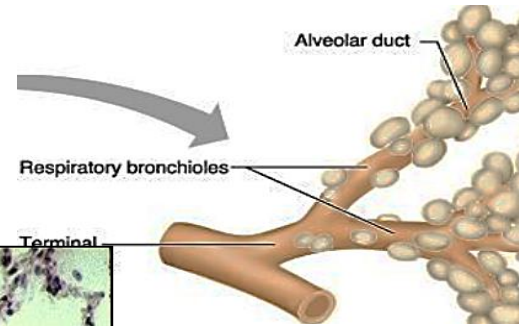


# Cross section in lung



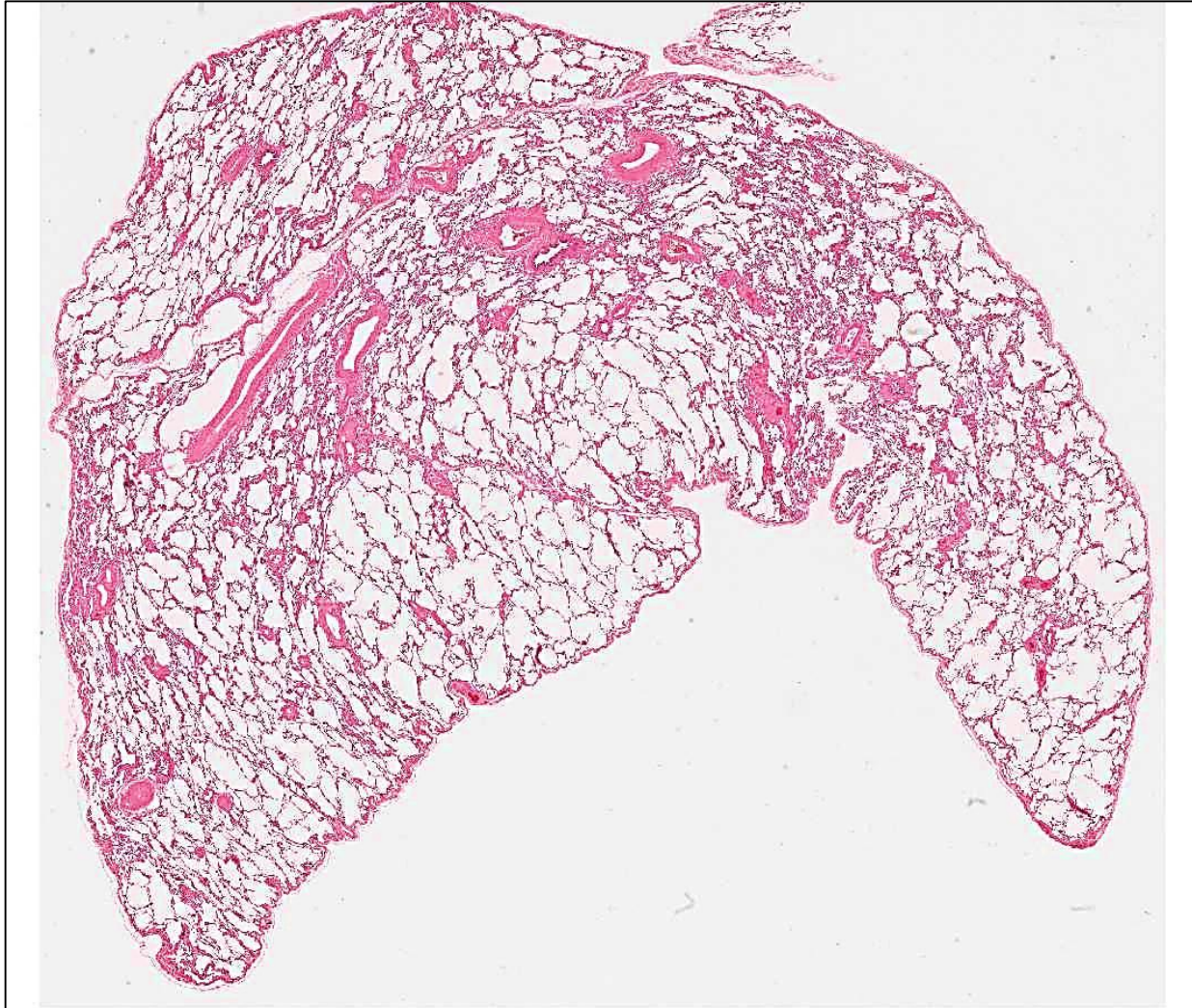


# Respiratory bronchiole

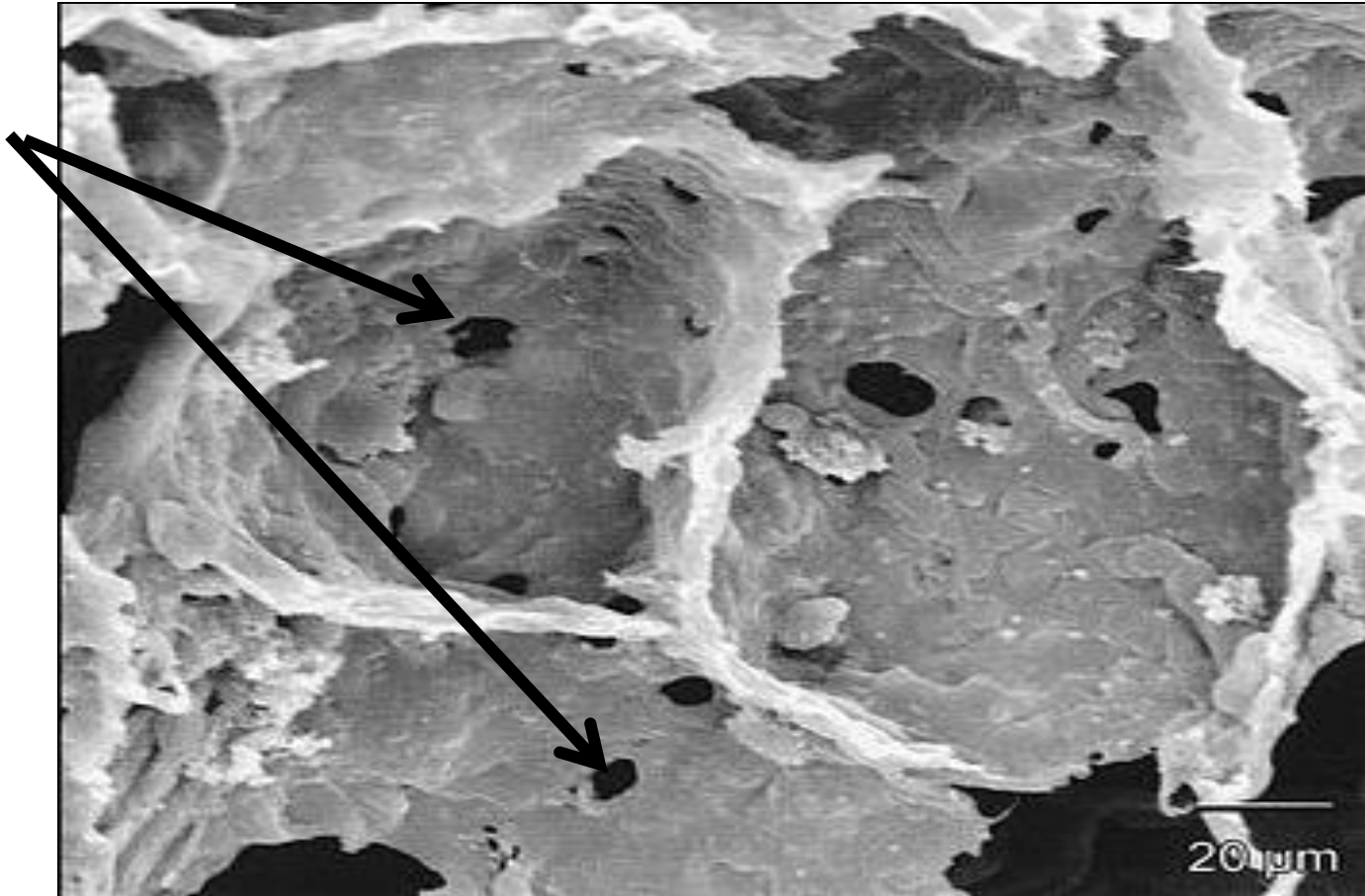


**Simple cuboidal ciliated with Clara cells**

# Lung

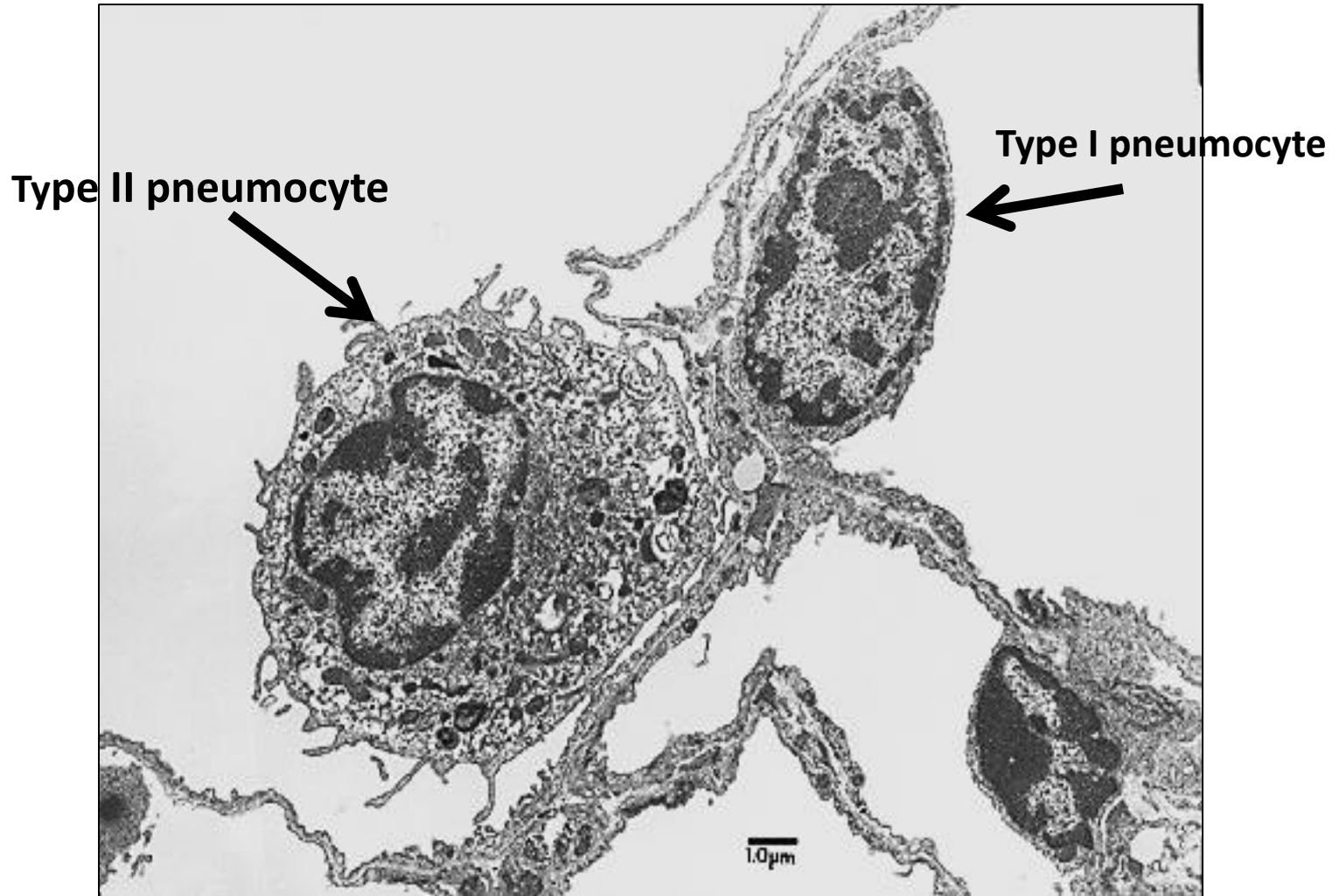


# Pores of Kohn (E/M)



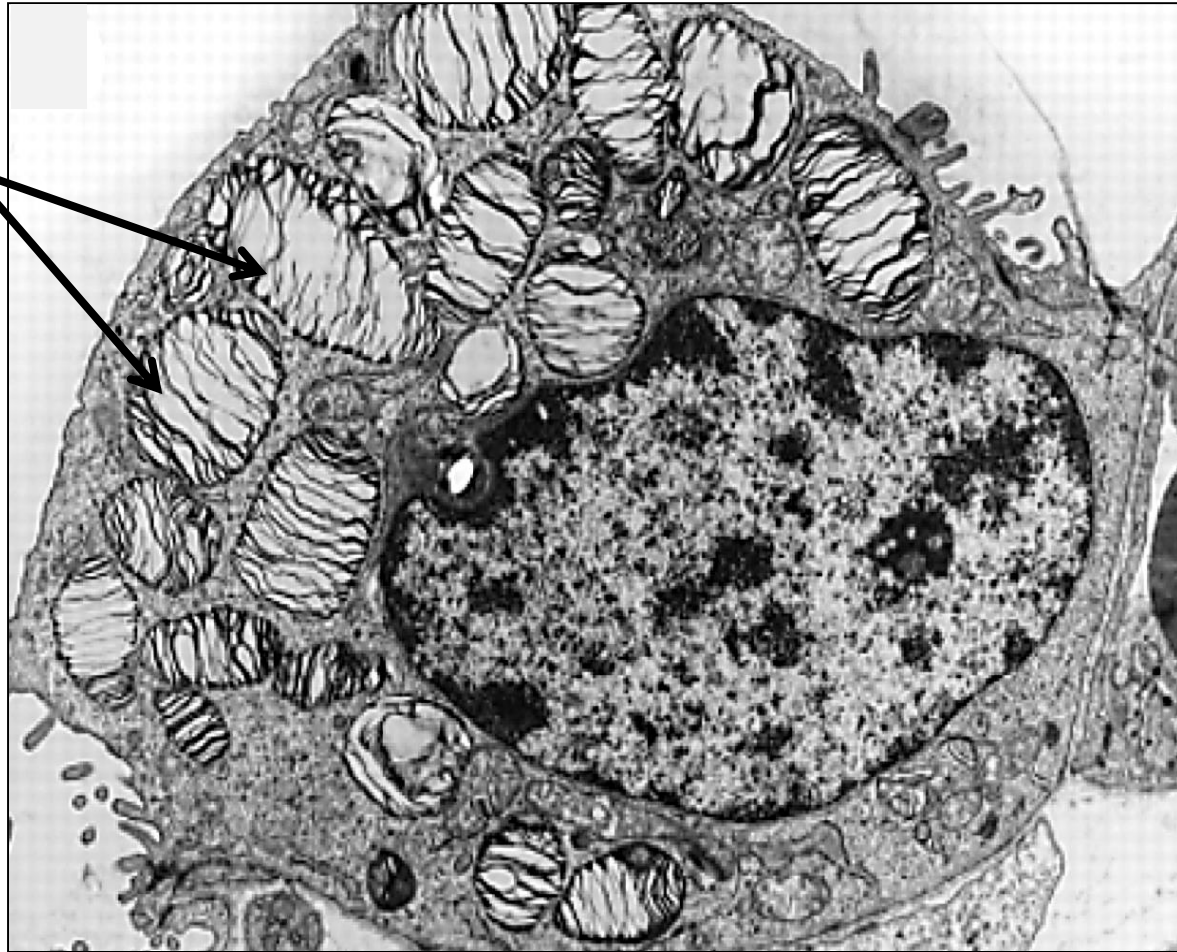


# Type I & type II pneumocyte (E/M)



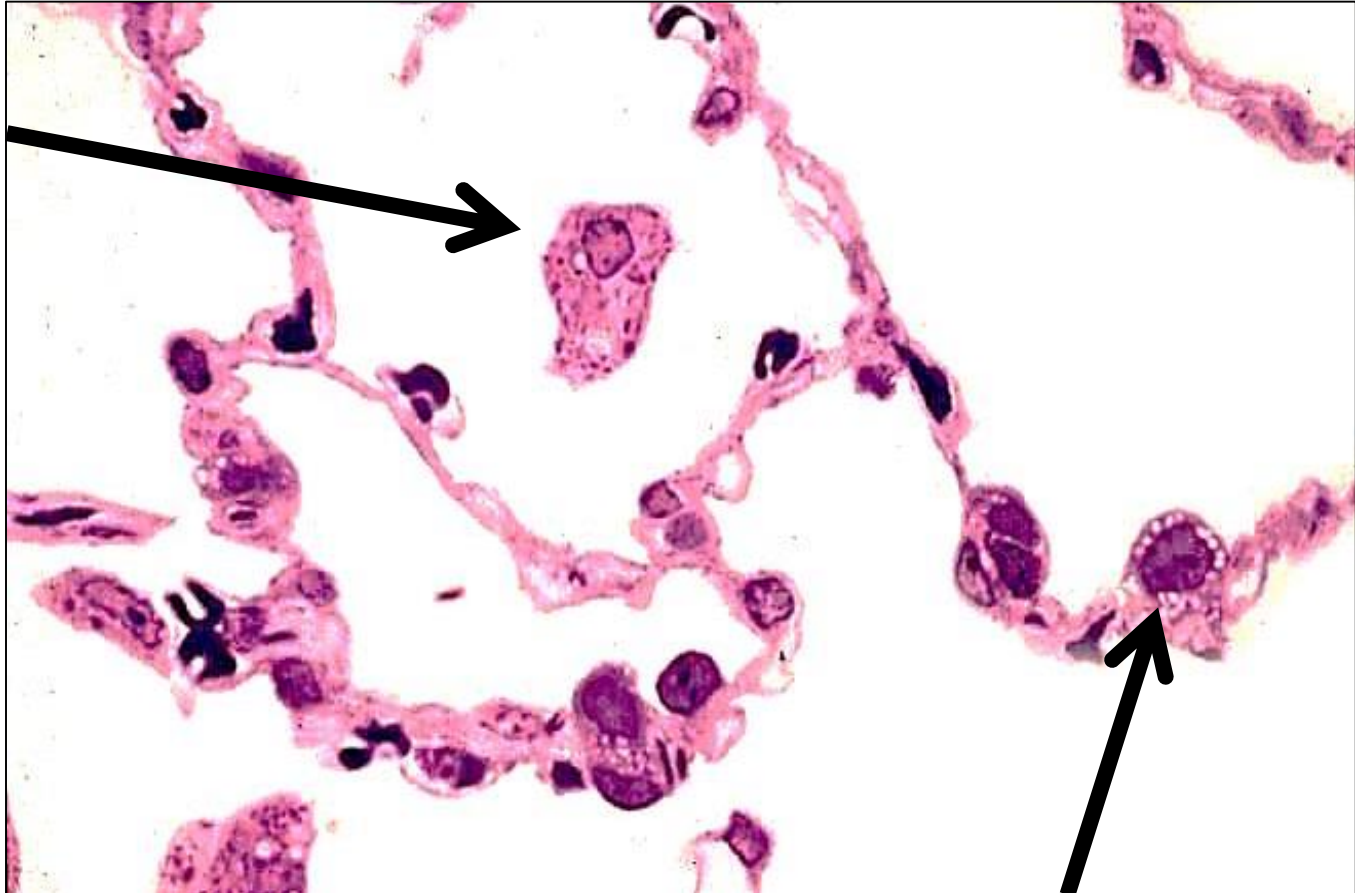
# Type II pneumocyte (E/M)

Lamellar bodies



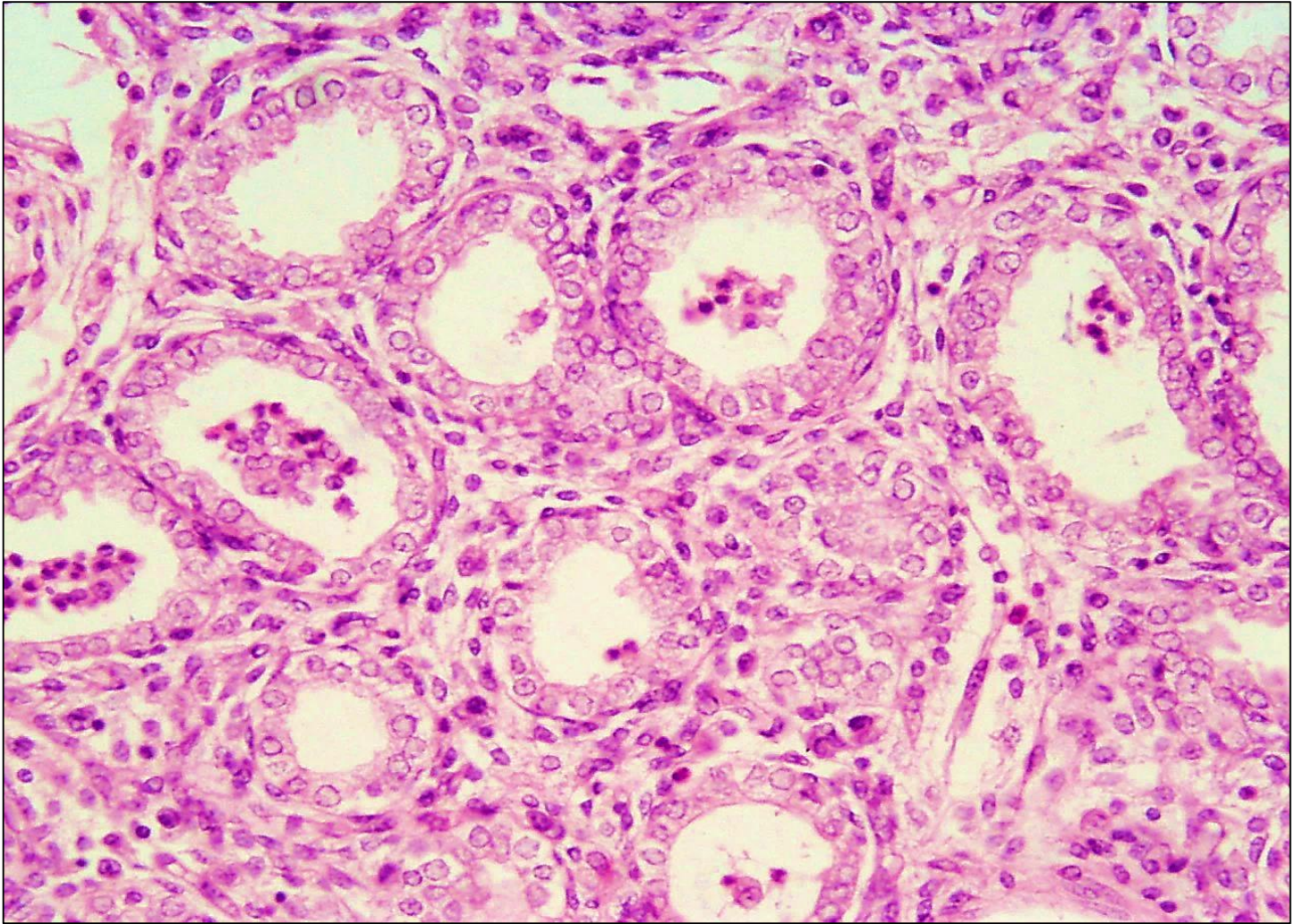


**Dust cell**



**Pneumocyte type II**

# Fetal lung





# Thank you

