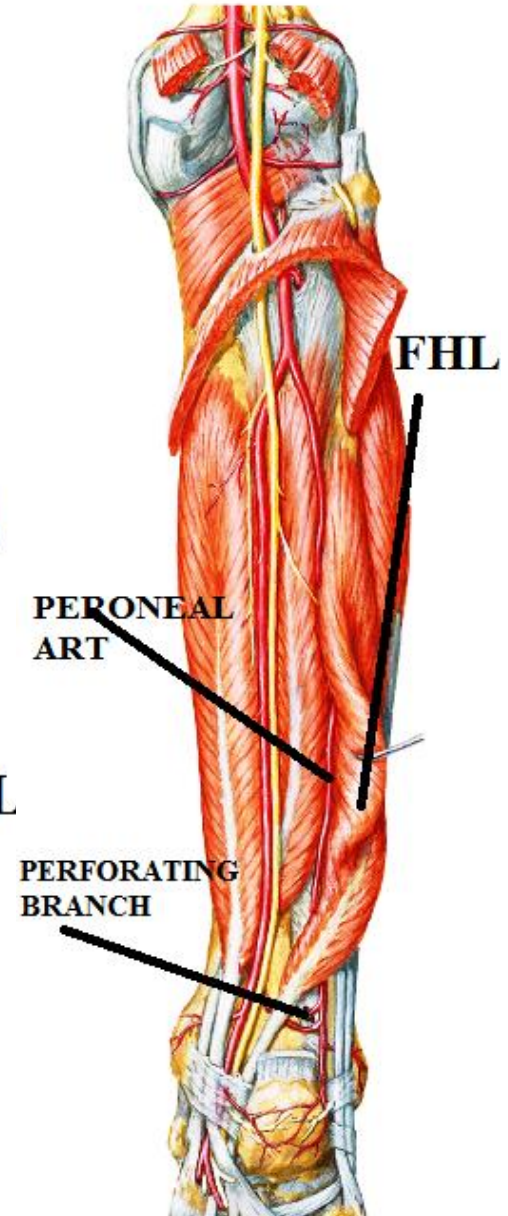
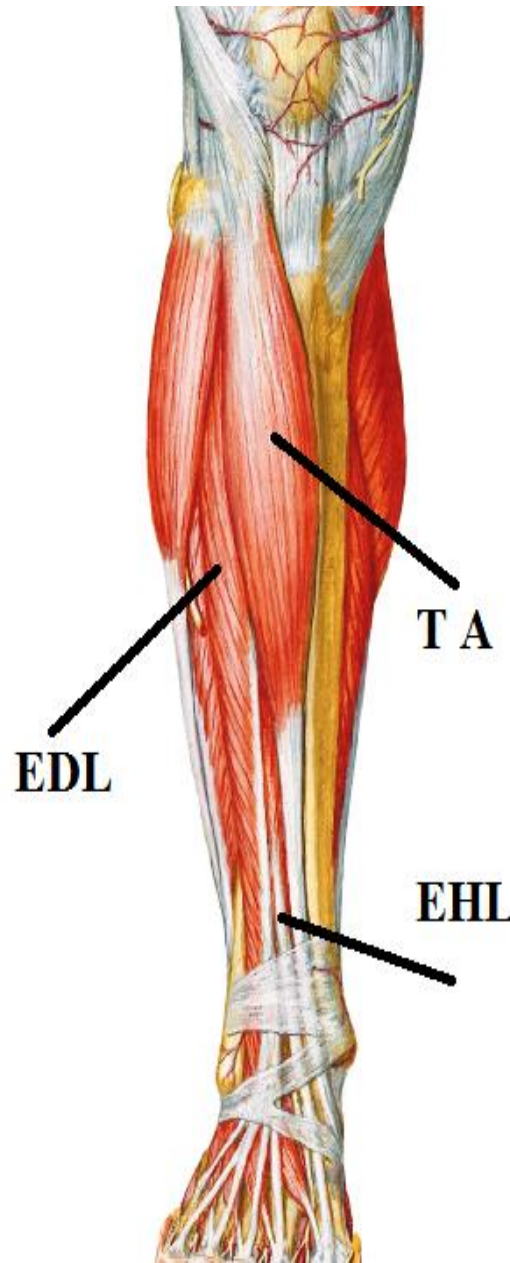
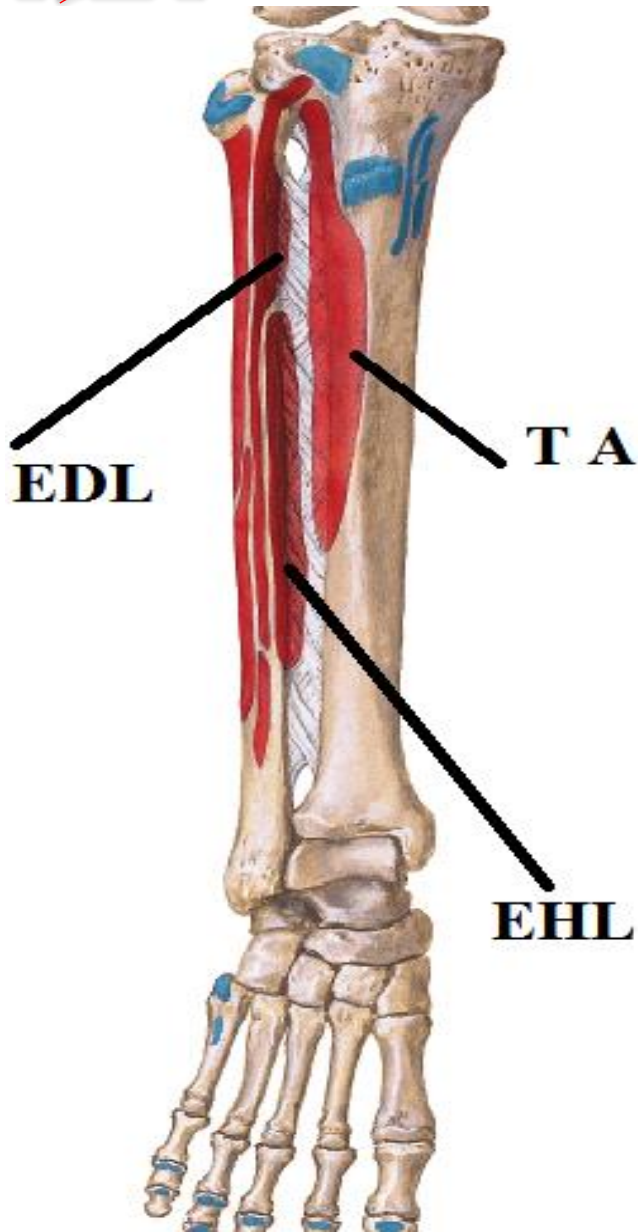


# ARTERIES OF LOWER LIMB 2



BY  
DR ABULMAATY MOHAMED  
ASSISTANT PROFESSOR  
ANATOMY & EMBRYOLOGY  
MUTAH UNIVERSITY

**REV**

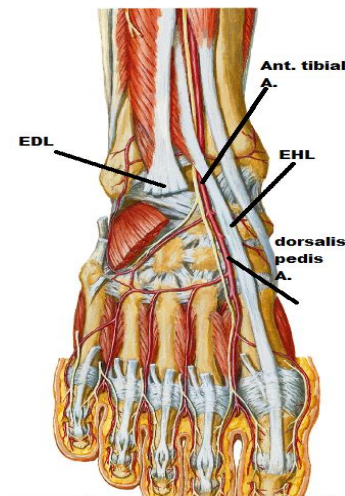
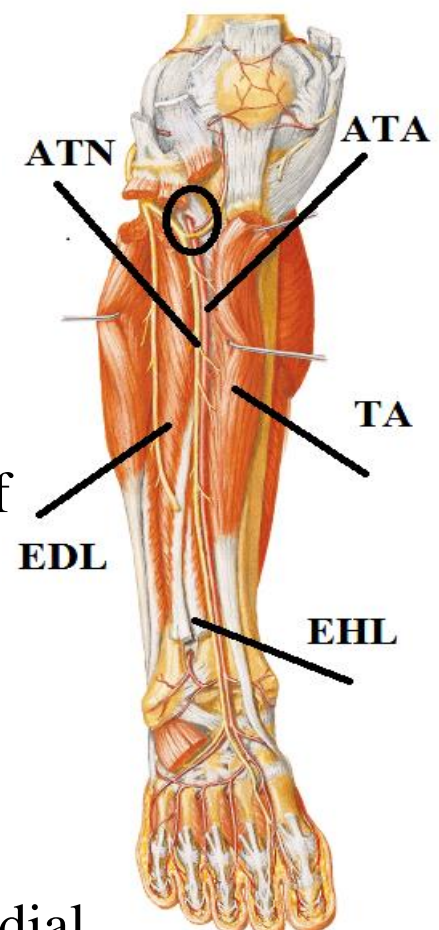


# ANT. TIBIAL ARTERY

- O. :** - smaller terminal br. of popliteal art.  
- at lower border of popliteus

## C. & R.:

- at first it lies in post. compartment of leg  
then pass forward through opening in upper part of interosseous membrane to enter ant. compartment.
- descends in front of interosseous membrane
  - ( ) tibialis ant. & ext. digit. Longus then
  - ( ) tibialis ant. & ext. hallucis longus then  
crossed by ext. hallucis longus from lateral to medial
- descend in front of tibia
  - ( ) tendons of ext. hallucis longus (medially)  
& ext. digit. Longus (laterally)
- along its course it is accompanied by ant. tibial n.



# ANT. TIBIAL ARTERY

**E:** -midway ( ) 2 malleoli,  
to be dorsalis pedis art.

**branches :**

-muscular :

to muscles of ant. compartment

- post. tibial recurrent:

-ant. tibial recurrent:

both brs share in

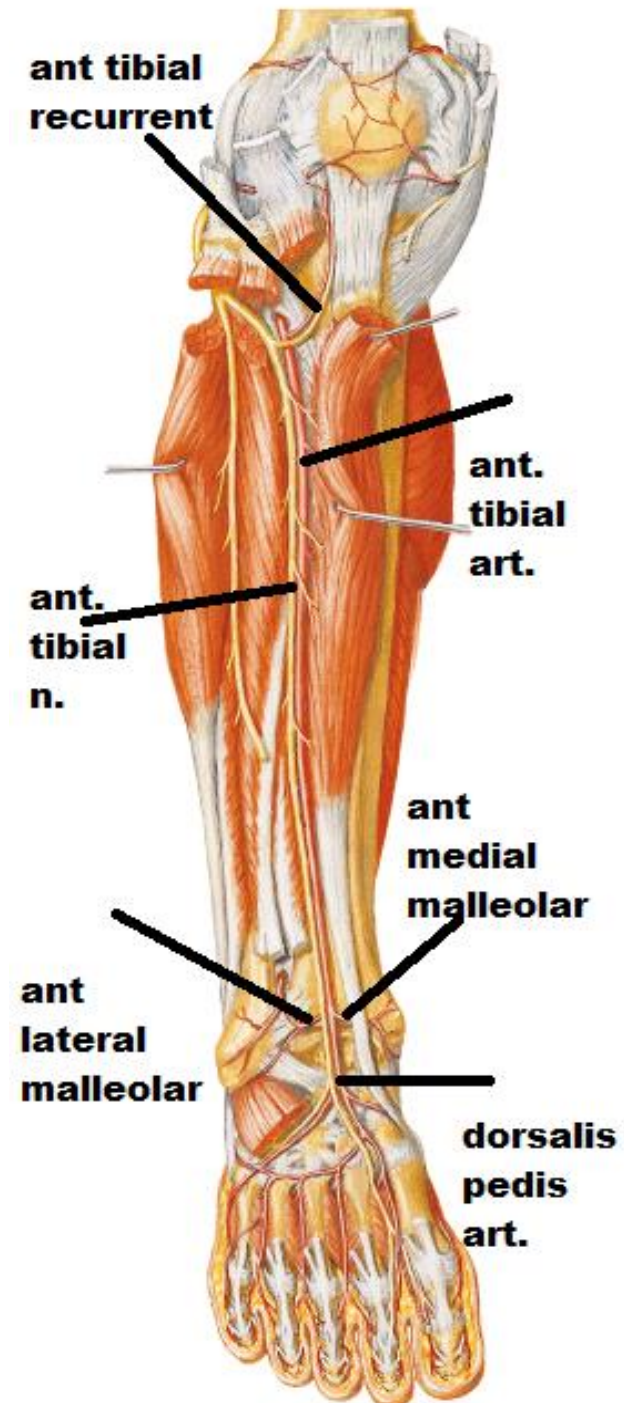
anastomosis around knee

-ant. medial malleolar

-ant. lateral malleolar

both share in

anastomosis around ankle



# DORSALIS PEDIS ARTERY

**O :** -midway ( ) 2 malleoli  
as continuation of ant. tibial art

## **C.& R.:**

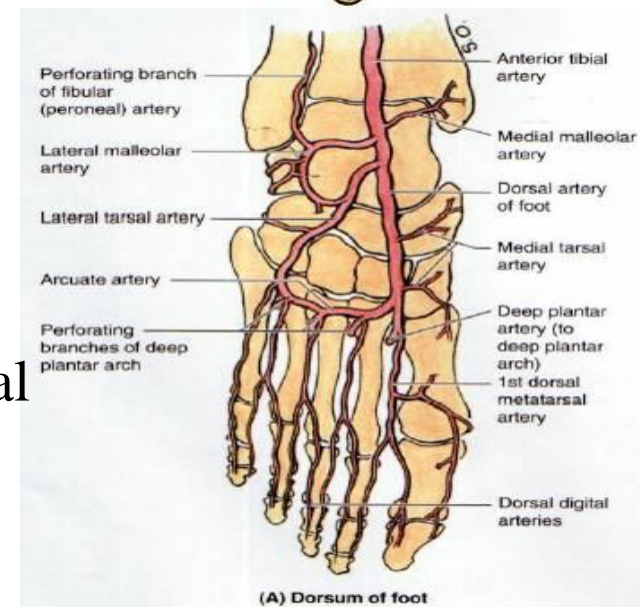
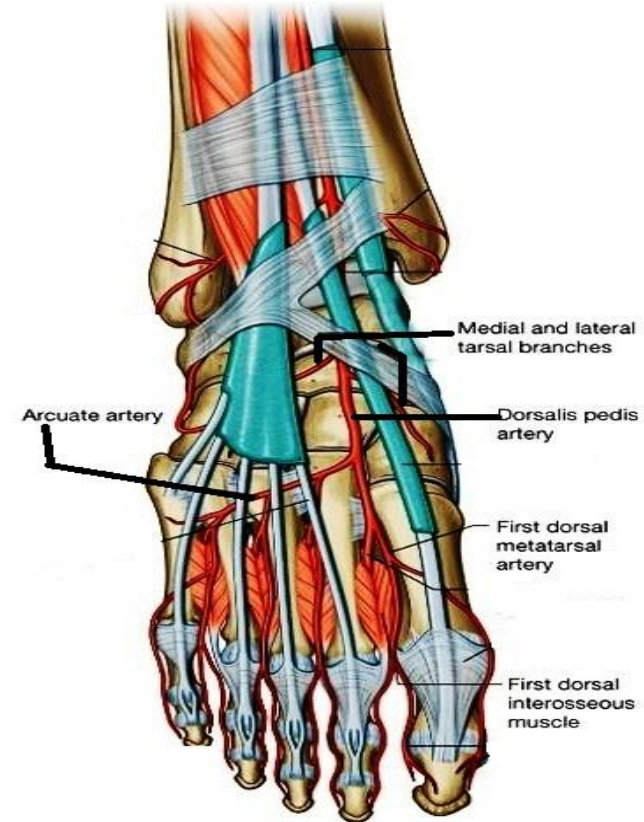
- run forward on dorsum of foot in line with 1st interdigital cleft
- Then downward ( ) 2 heads of 1st dorsal interosseous to enter sole

**E. :** - in sole

- anastomose with plantar arch

## **branches :**

- 1- medial & lateral tarsal
- 2- 1st dorsal metatarsal
- 3- Arcuate → 2nd, 3rd, 4th dorsal metatarsal
- 4- 1st plantar metatarsal.



# POSTERIOR TIBIAL ARTERY

- O. :** -larger terminal branch of popliteal art  
-at lower border of popliteus.  
-It supplies post. & lateral compartments of leg

## **C. & R. :**

- descends in posterior compartment of the leg accompanied by posterior tibial nerve

- **in upper part of leg**

descends vertically ( ) soleus & tibialis post.

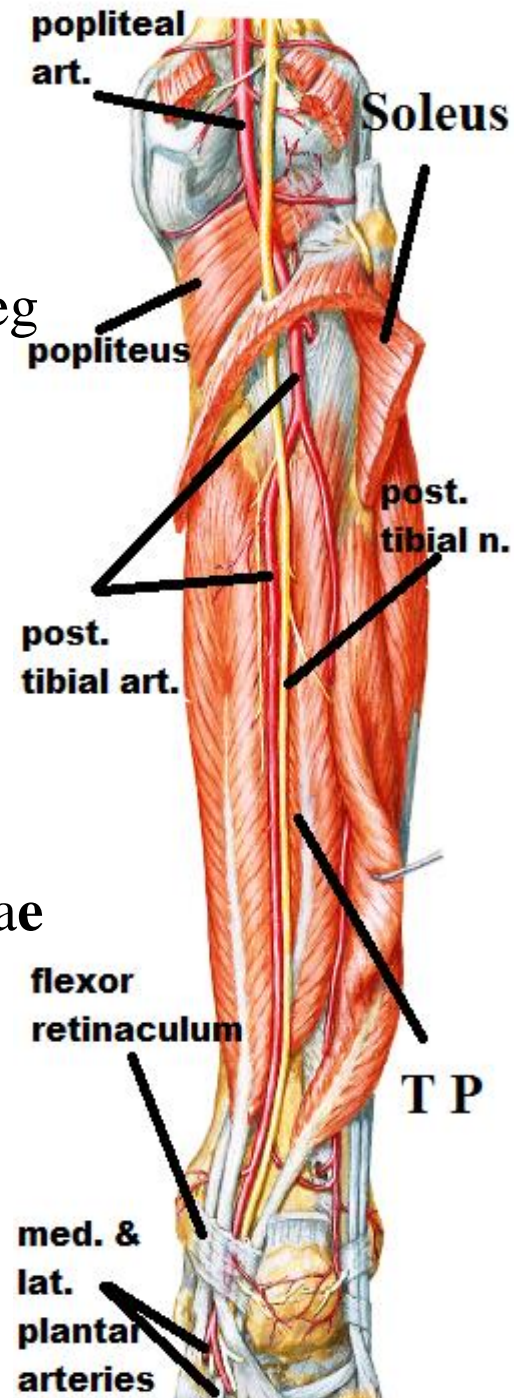
- **in lower part of leg**

the art. become superficial covered by skin, fasciae lying on back of lower end of tibia & capsule of ankle

**E :** -deep to flexor retinaculum

(behind medial malleolus) (pulsation felt)

-give medial & lateral plantar arteries



# POSTERIOR TIBIAL ARTERY

## branches :

1-circumflex fibular:-

share in anastomosis around knee

2-peroneal art. :

The largest & longest branch that supply lateral compartment

3-terminal brs :

medial & lateral plantar arteries

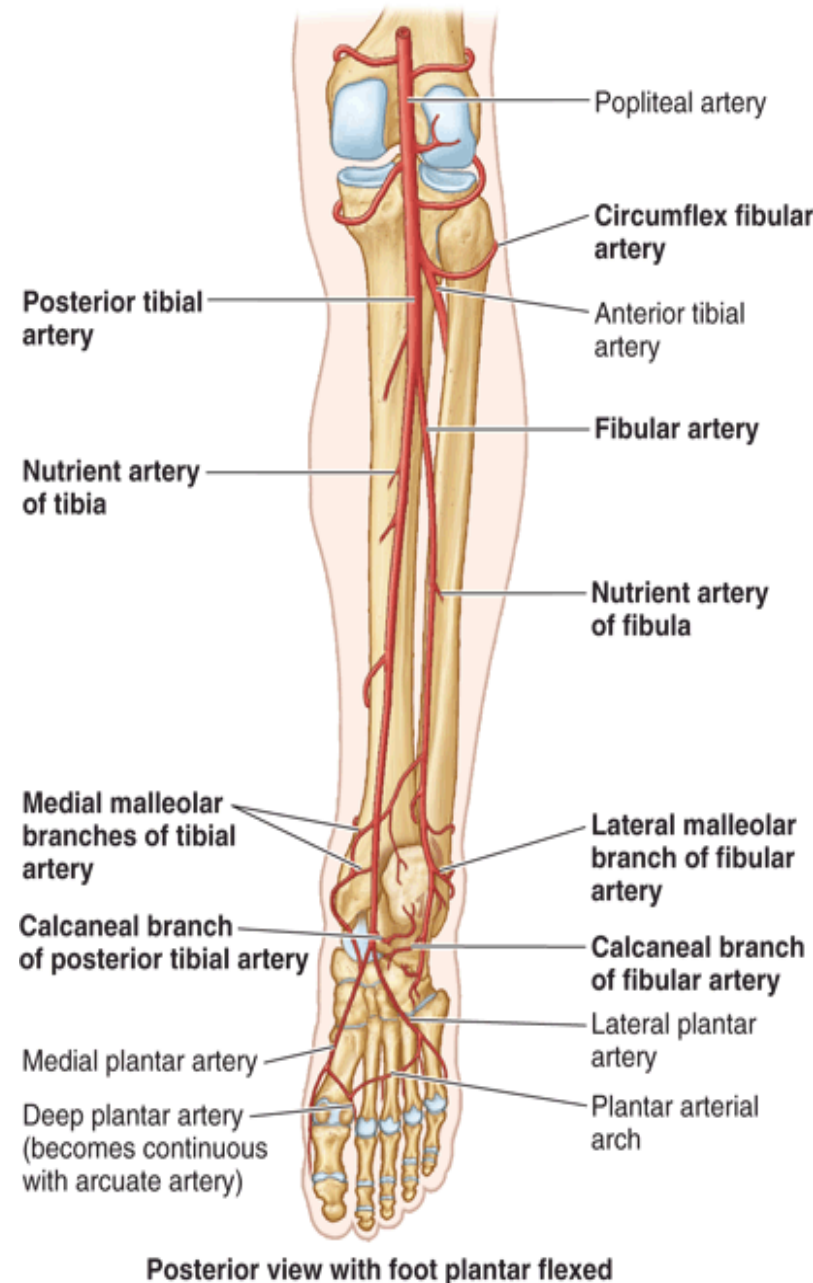
4-muscular brs :

to muscles of post. compartment

5-nutrient br: to tibia

6-medial calcanean & malleolar brs :

anastomosis around ankle



# POSTERIOR TIBIAL ARTERY

Peroneal (fibular) art.:

**O** : - near to origin of post. tibial art

**C** : -descend vertically

behind the fibula

close to flexor hallucis longus

**brs** :

1-perforating br.:

pierce interosseous membrane

to reach ant. Compartment of leg

May replace anterior tibial art.

2-muscular brs :

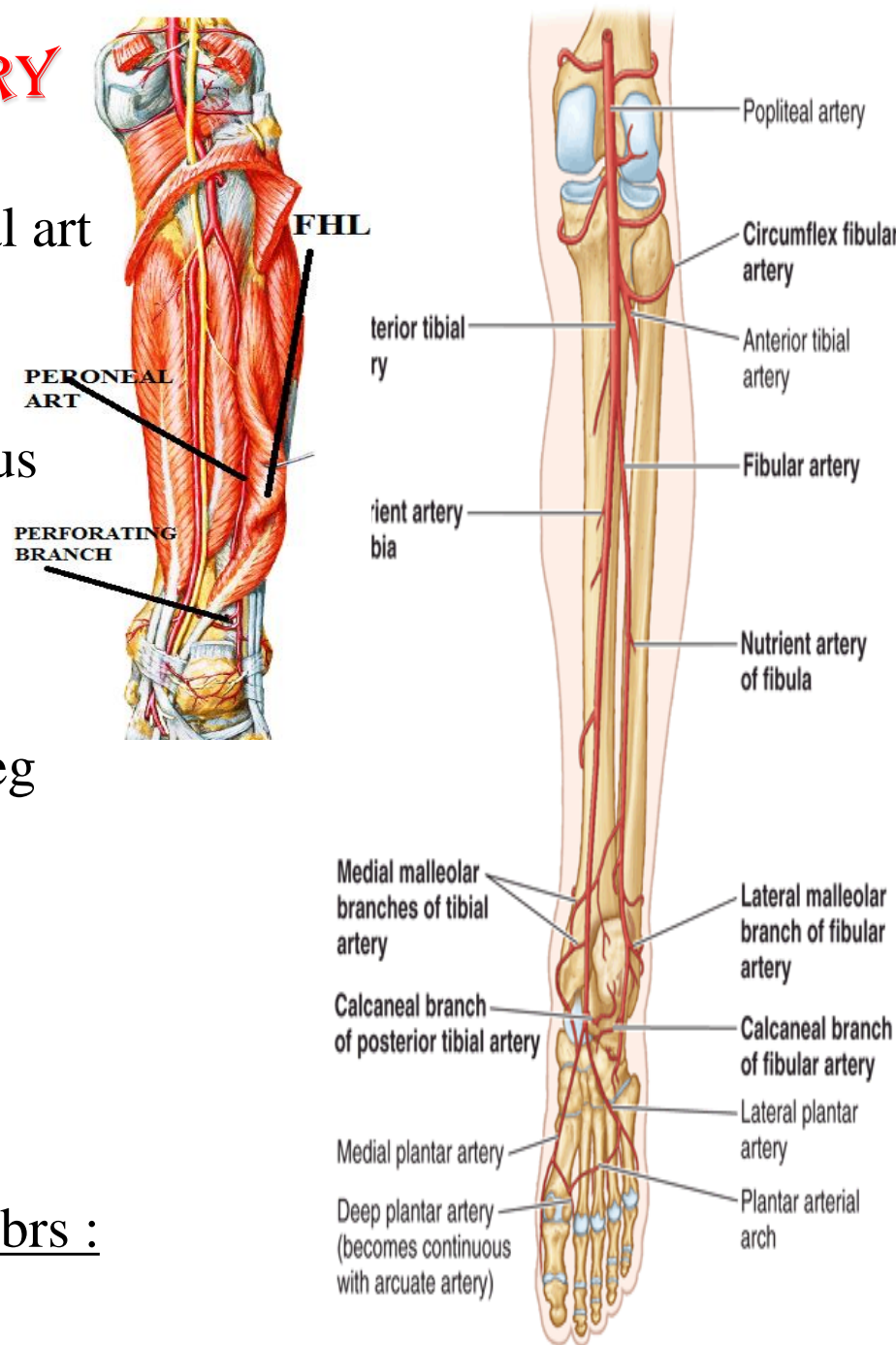
to muscles of

lateral compartment of leg

3-nutrient br. to fibula

4- lateral calcanean & malleolar brs :

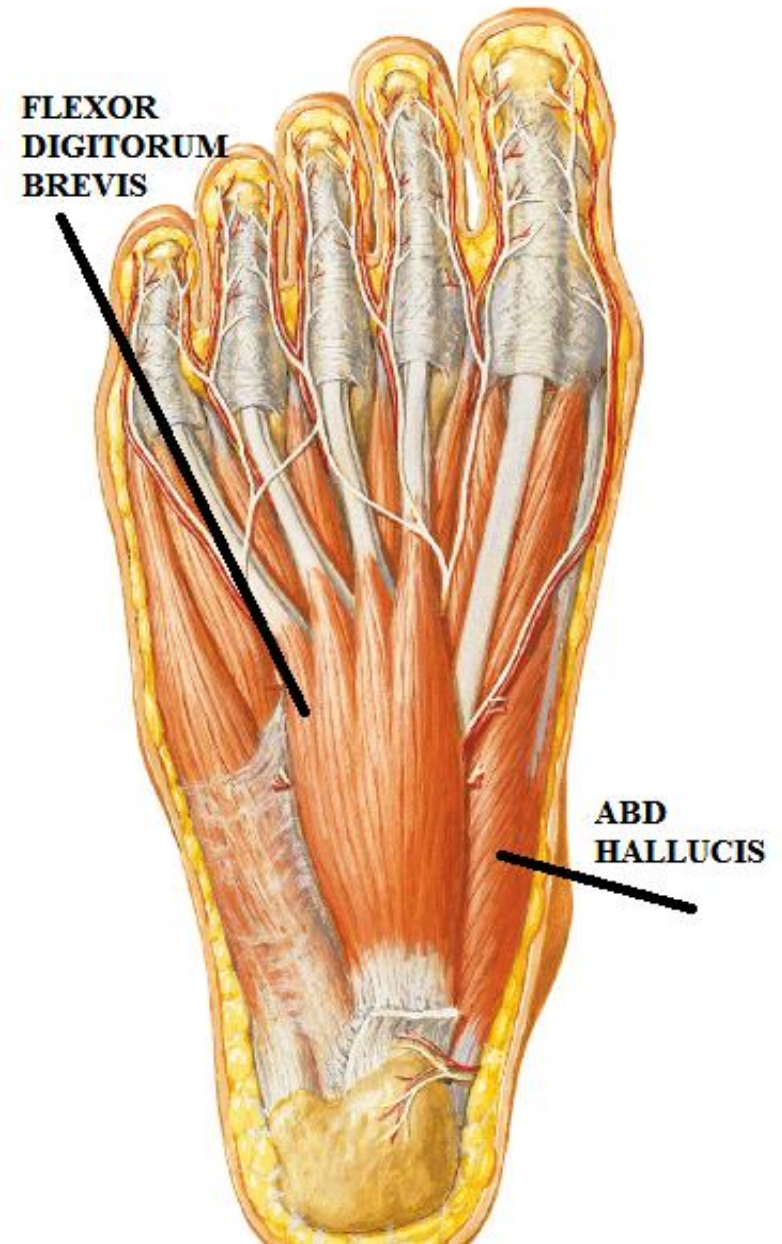
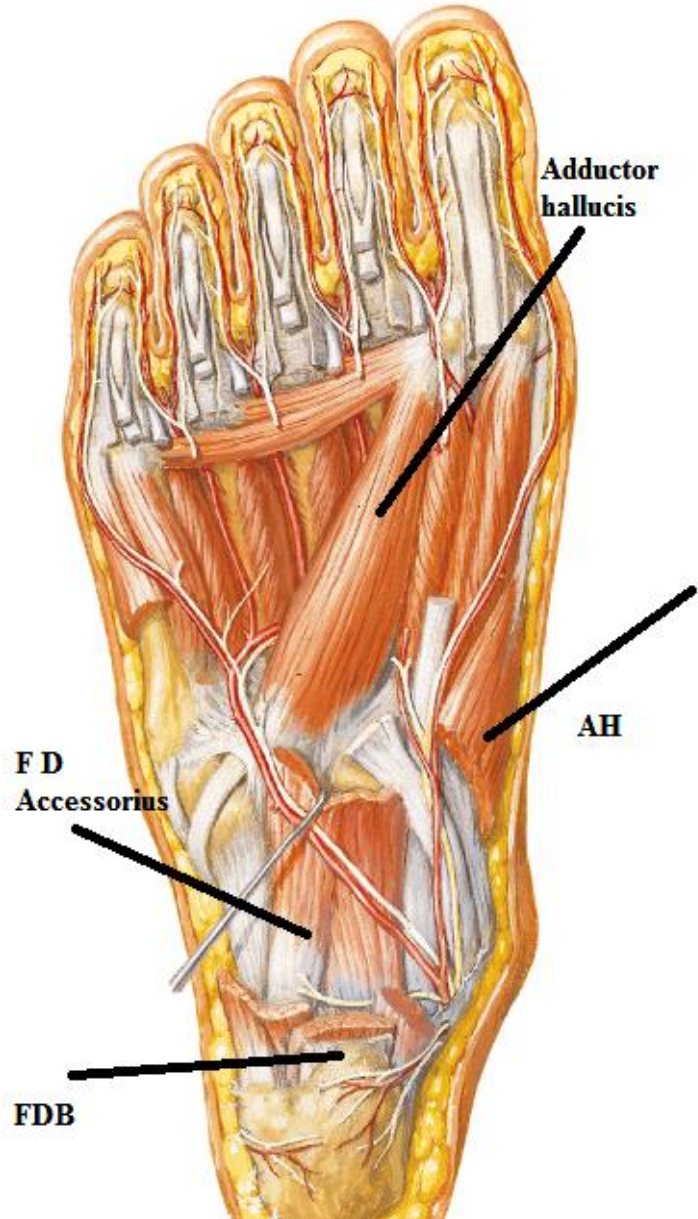
to anastomosis around ankle



Posterior view with foot plantar flexed



# REV.



# MEDIAL PLANTAR ARTERY

**O:** - small terminal br.  
of post. tibial art.

-deep to flexor retinaculum

**C & r:** with medial plantar n.

(The nerve lateral to the artery)

- pass deep to abductor hallucis

- then ( ) it & flexor digi. brevis

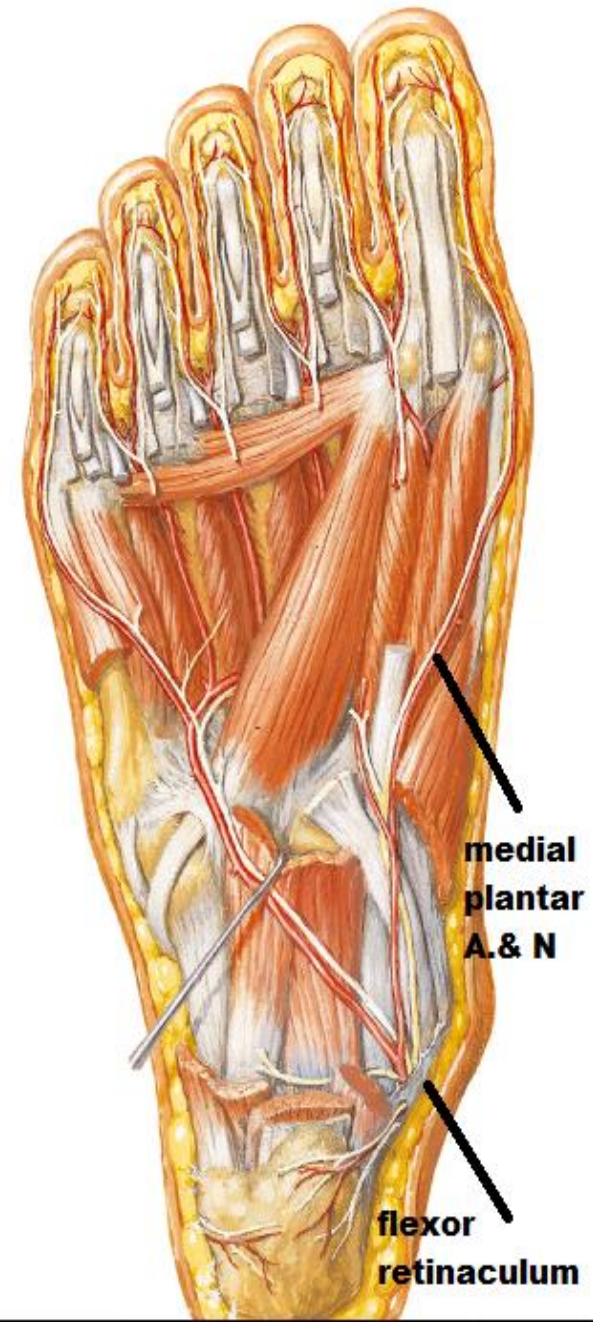
**E.:** by supplying medial side  
of big toe

**Brs:**

Cutaneous &

Muscular &

Articular branches:



# LATERAL PLANTAR ARTERY

- O:** - large terminal br of post. tibial art.
  - deep to flexor retinaculum

## C & r:

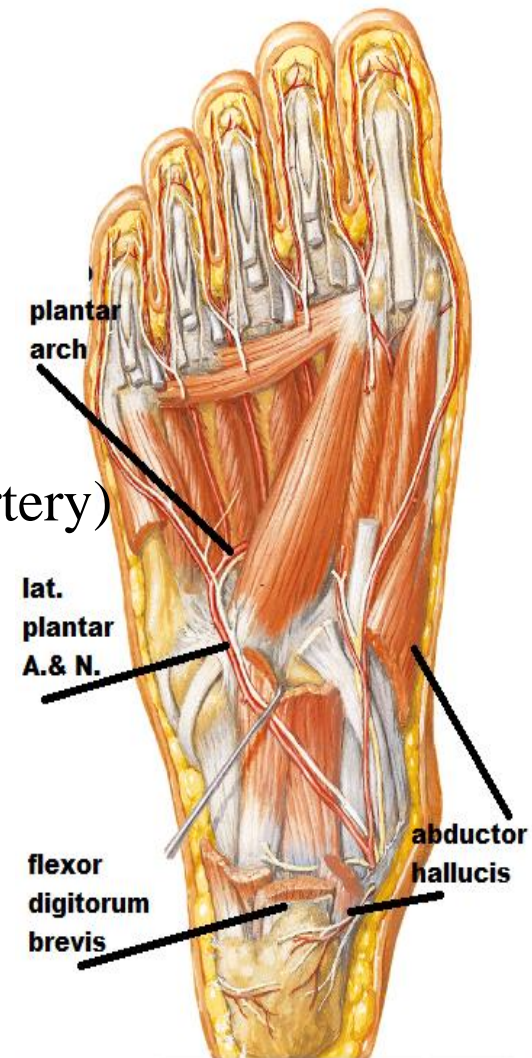
With lateral plantar n. (the nerve medial to the artery)

- Pass deep to abductor hallucis.
- then ( ) FDB & flexor digitorum accessories till the base of 5th metatarsal
- At base of 5th metatarsal it curve medially to form plantar arch

that pass ( ) the 3rd layer (adductor hallucis)

and the 4th layer (tendons of peroneus longus & tibialis post.)

N.B. the deep branch of lateral plantar n. lies in concavity of the plantar arch



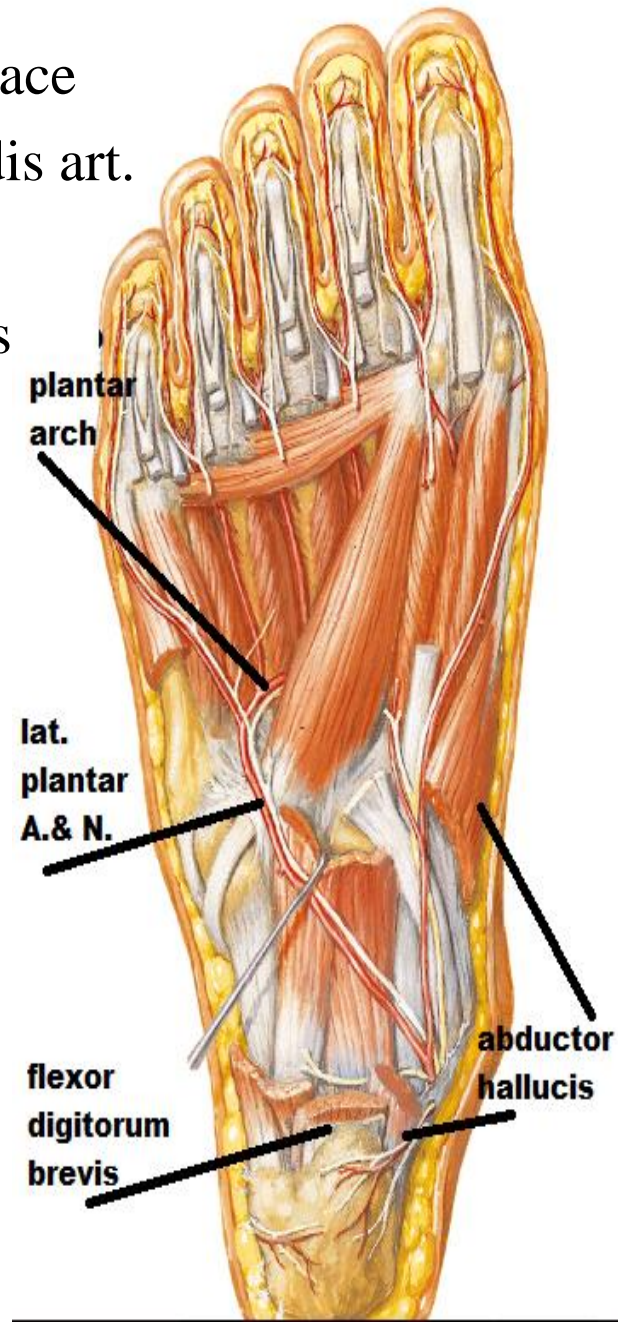
# LATERAL PLANTAR ARTERY

**E.:** -at proximal end of 1st intermetatarsal space  
-anastomose with the end of dorsalis pedis art.

**brs:**

1-cutaneous & muscular & articular branches

2-The plantar arch give:  
plantar digital arteries to toes.





THANQ