

وسهلا

أهلا



الأستاذ الدكتور يوسف حسين

أستاذ التشريح وعلم الأجنة - كلية الطب - جامعة الزقازيق - مصر

رئيس قسم التشريح و الأنسجة و الأجنة - كلية الطب - جامعة مؤتة - الأردن

دكتوراه من جامعة كولونيا المانيا

Dr. Youssef Hussein Anatomy اليوتيوب

جروب الفيس د. يوسف حسين (استاذ التشريح)

اليوتيوب د. يوسف حسين



Limbic System

الڤوتڤوب د. ڤوسف حسڤن

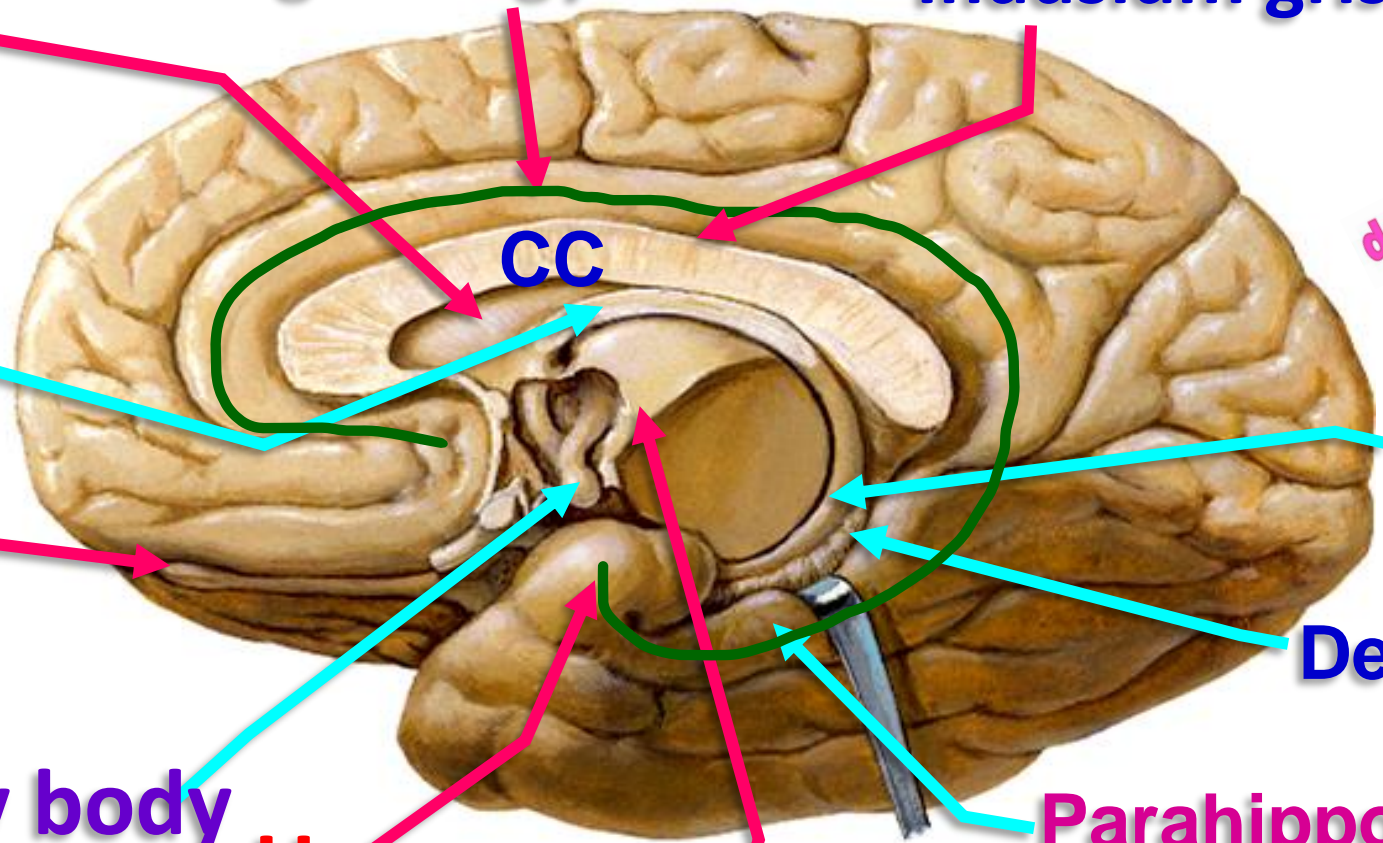


Cingulate gyrus

Indusium griseum

Septum pellucidum

dr_youssefhusein@yahoo.com



Fornix

CC

Olfactory bulb

Fimbria of Hippocampus

Dentate gyrus

Mammillary body

Uncus

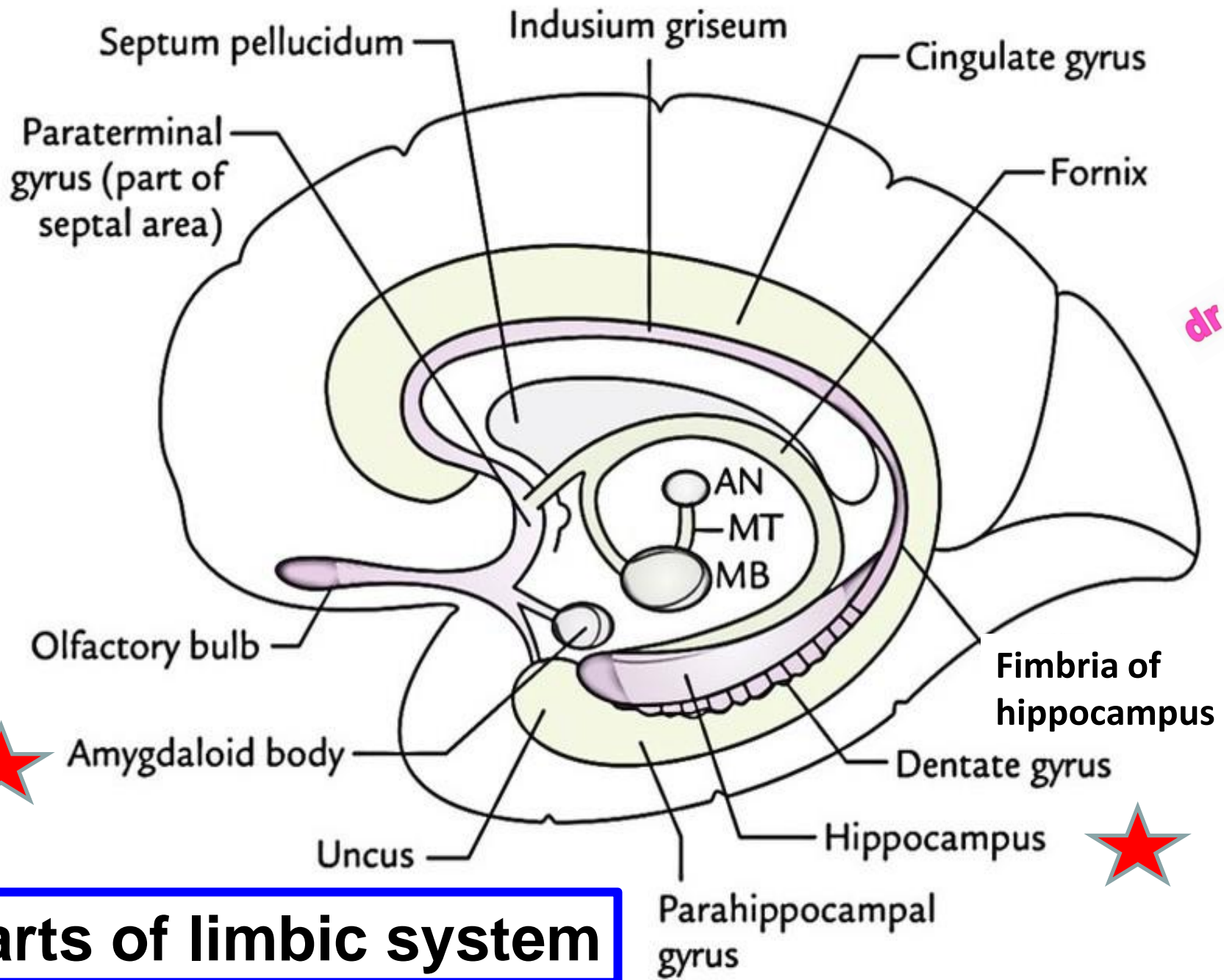
Parahippocampal gyrus

Anterior nucleus of Thalamus

Parts of limbic system

اليوثيوب د. يوسف حسين

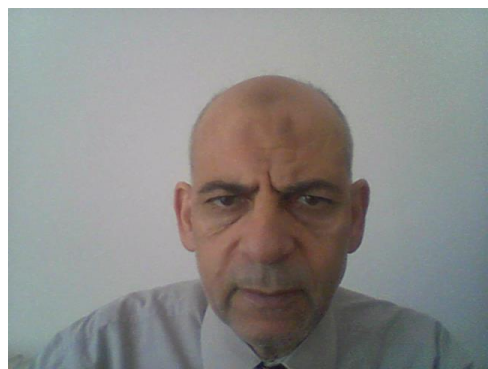




dr_youssefhussein@yahoo.com

اليوتيوب د. يوسف حسين

Parts of limbic system



Parts of limbic system

- The name applied to the number cortical and subcortical structures in the form of an arch (limbus) known as circle of Papez.
- **Cingulum (association fiber):** from **frontal** lobe just below the rostrum of corpus callosum → extends backwards in the cingulate gyrus → curves in the isthmus → passes forwards in the parahippocampal gyrus → ends in the **uncus**.
- **Indusium griseum**, Thin grey matter covers superior surface of corpus callosum.
- **Septum pellucidum**, thin sheet of white matter between fornix and corpus callosum.
- **Mamillothalamic tract (MT)** from mammillary body of hypothalamus to anterior nucleus of thalamus.
- **Fornix**
- **Amygdaloid body**
- **Hippocampus**
- **Olfactory pathway**

اليوثيوب د. يوسف حسين



• Functions of Limbic System

- It involved in processing

➤ **Memory**

➤ **Emotional response including feelings of happiness, fear, anger, and anxiety.**

➤ **Behavior**

➤ **Feeding (satiety & hunger)**

➤ **Maternal instincts as caring for our young**

➤ **Sexual arousal**

➤ **Responsible for olfactory related stimuli**

(a person may be vomit or salivate when smell a certain odor)

dr_youssefhussein@yahoo.com

اليوتيوب د. يوسف حسين



Fornix

اليوتيوب د. يوسف حسين



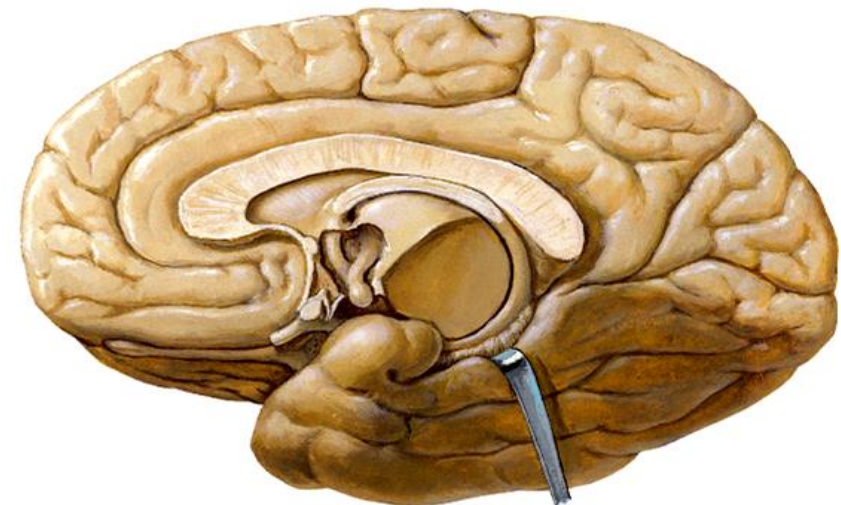
body of the fornix

Commissural fibres

Anterior columns of the fornix

Mammillary bodies

Posterior crura (columns) of the fornix



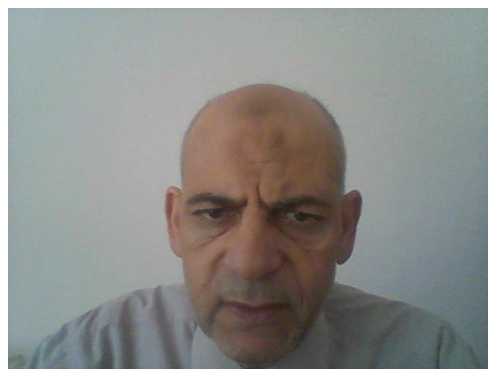
Amygdaloid body

hippocampus

Fimbria of hippocampus

The fornix

اليوثيوب د. يوسف حسين



Fornix

- The fornix is the **Efferent** system of the hippocampus.
- It forms a part of the **limbic system**.
- **Structure**; It is formed.

1- Two Posterior columns (Crurae);

- Each crus is the continuation fibers of the fimbria of the hippocampus.
- They connected together by commissural fibers
- They come together in the median plane to form the body.

2- **Body**; triangular in shape, with narrow anterior and broad posterior.

- **Upper surface** is connected with lower surface of corpus callosum by **septum pellucidum**.

- **Lower surface** rests on upper surface of the 2 thalami and roof of the

3- Two anterior columns; end a) **Mammillary body** (hypothalamus)

mammillothalamic tract to anterior nucleus of thalamus to cingulate gyrus

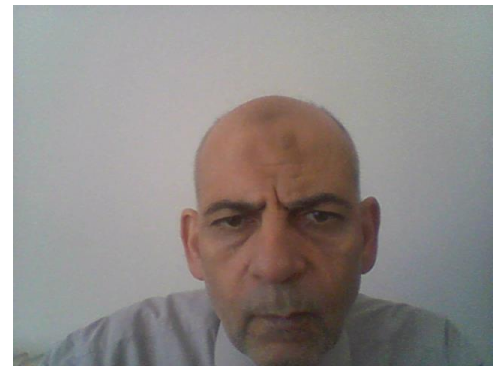
b) **Septal area, and orbital cortex**

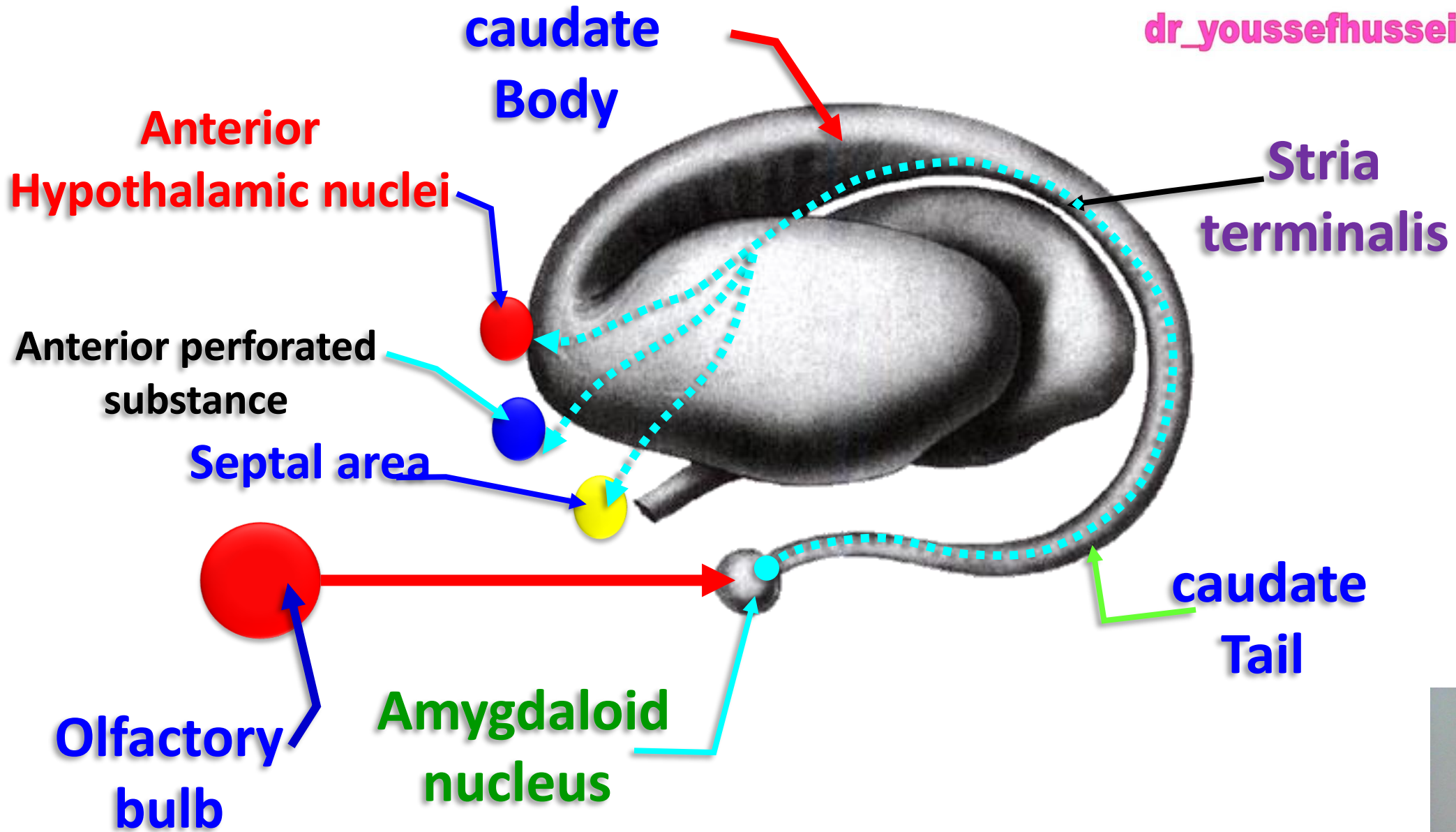
الـيـوتـيـوب دـ. يـوسـف حـسـيـن
dr_youssefhussein@yahoo.com



Amygdaloid body

البيوتوب د. يوسف حسين





اليوثيوب د. يوسف حسين



Amygdaloid Body لوزة المخ

- Almond-shaped, located on top of the front of the hippocampus
- It joins to the tail of caudate nucleus.

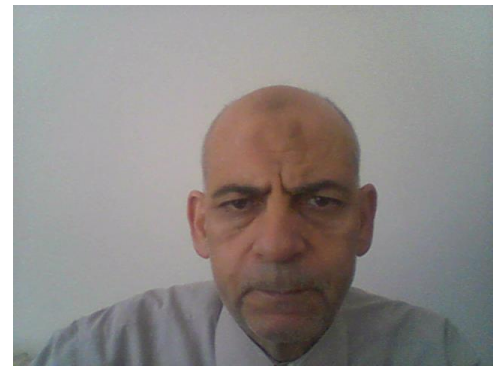
** **Afferent**; from the olfactory bulb.

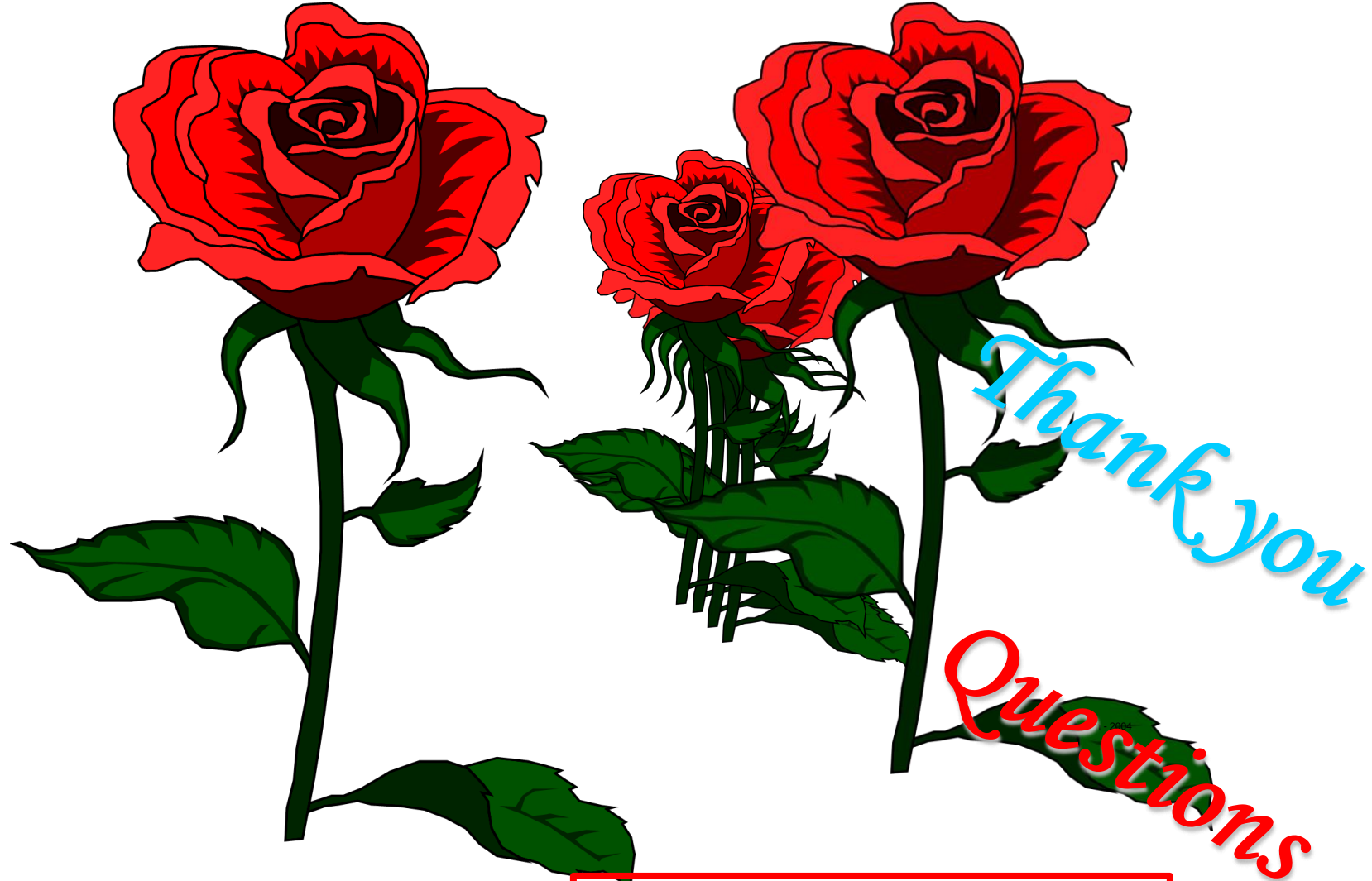
** **Efferent**; **Stria terminalis** to septal area (nuclei) , anterior hypothalamic nuclei and anterior perforated substance

** It is part of the **olfactory** and **limbic systems**

dr_youssefhussein@yahoo.com

اليوثيوب د. يوسف حسين





اليوتيوب د. يوسف حسين

