


Question 2


Not yet
answered

Marked out of
1.00

 Flag
question

Tendon Jerk may be inhibited (i.e hyporeflexia) in?

Select one:

- a. UMNL of the internal capsule.
- b. Anxiety.
- c. Alkalosis.
-  d. Myxoedema.
- e. Thyrotoxicosis.

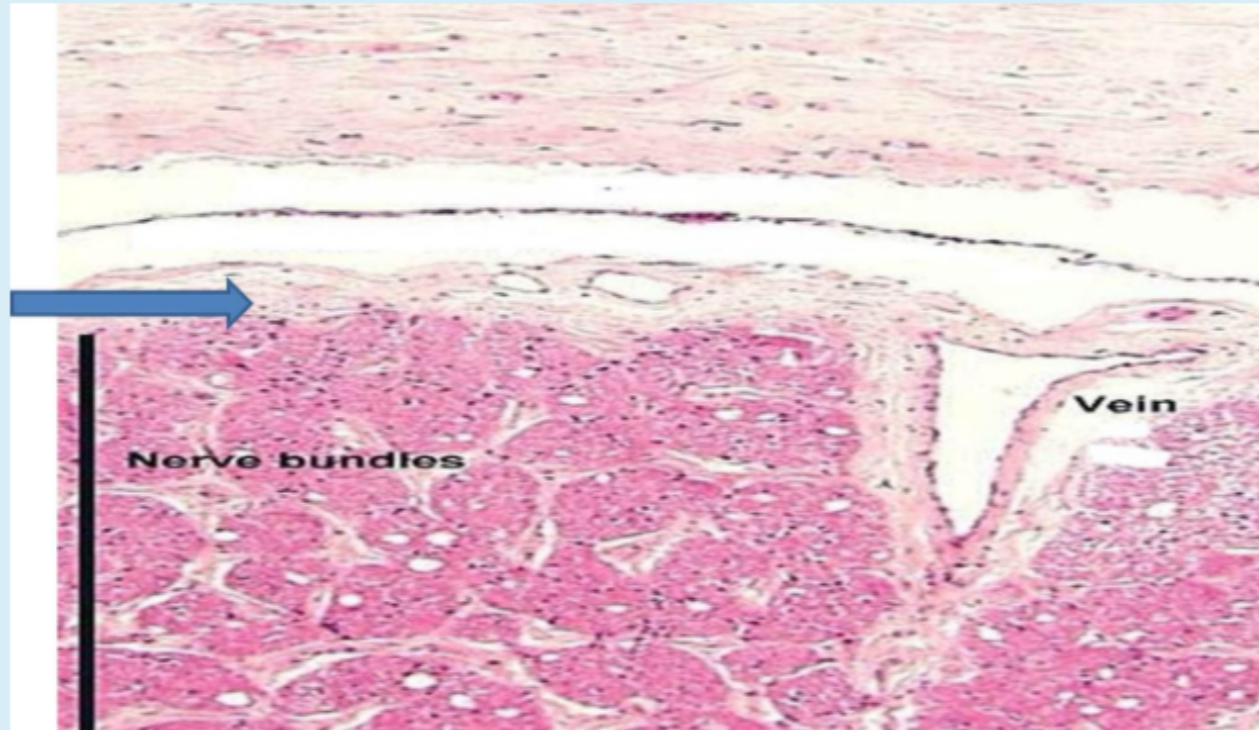
Question 3

Not yet
answered

Marked out of
1.00

Flag
question

Concerning the pointed structure the true statement is-----?



Select one:



- a. Contain many blood vessels
- b. In spinal cord terminate at the level of S2
- c. Formed of dense CT
- d. Responsible for drainage of CSF
- e. Form villi and granulation in dural venous sinuses

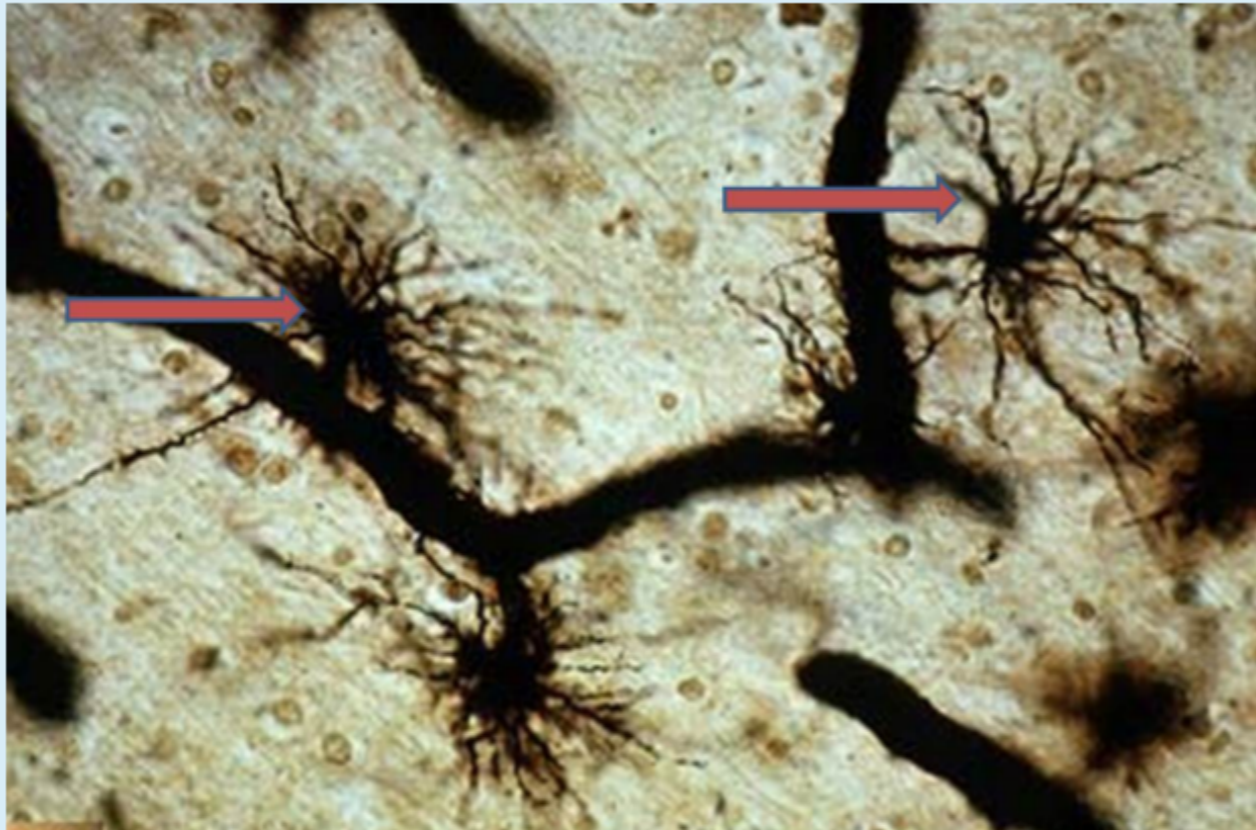
Question 4

Not yet answered

Marked out of 1.00

Flag question

The pointed structure is-----?



Select one:

- a. Microglia
- b. Astrocytes
- c. Ependymal cells
- d. Oligodendrocytes
- e. Schwann cell

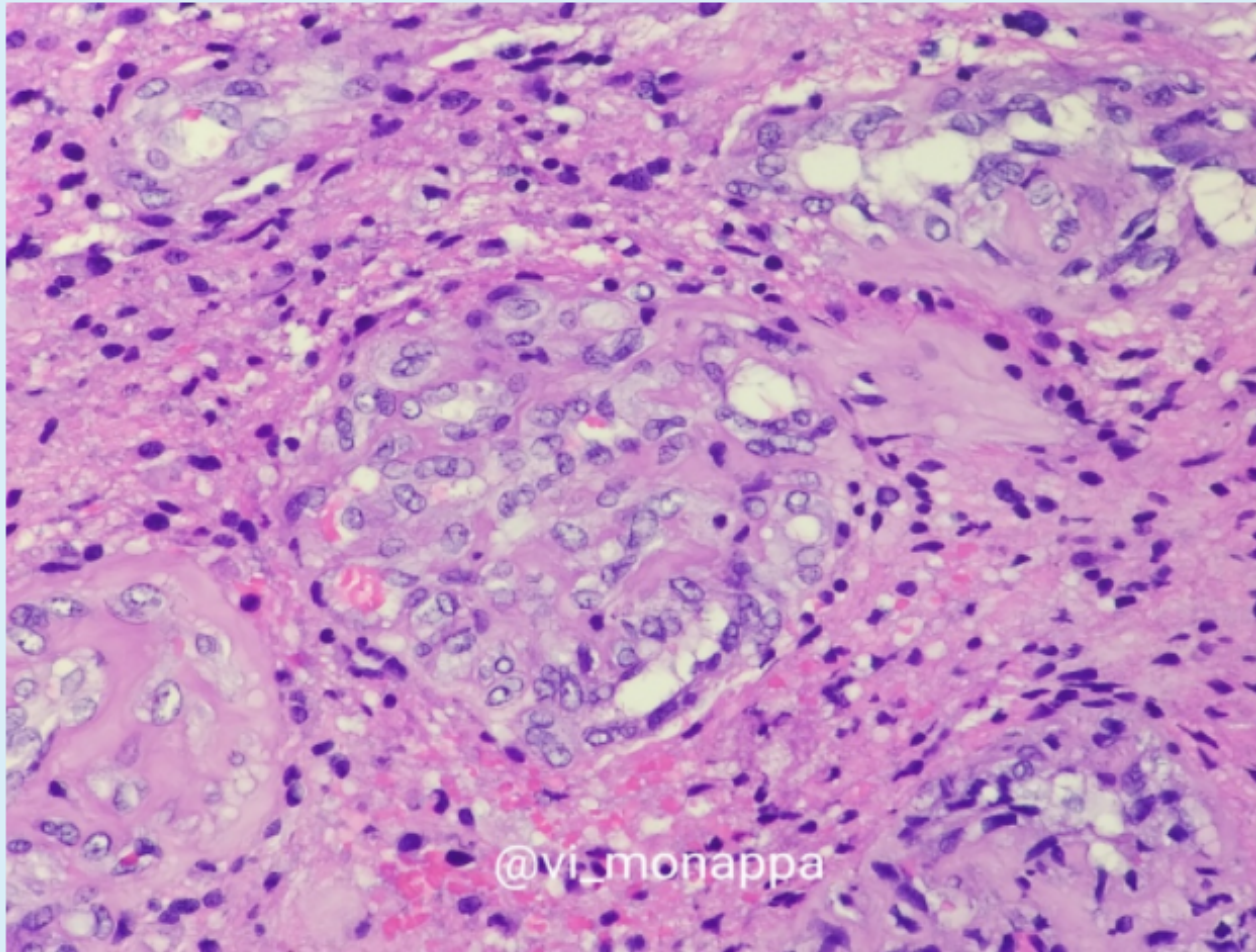
Question 5

Not yet answered

Marked out of 1.00

Flag question

Which of the following tumors is commonly associated with this histologic feature?



Select one:



a. Glioblastoma WHO grade IV



b. Meningioma



c. Ganglioglioma WHO grade I



d. Ependymoma WHO grade II



e. Primary central nervous system lymphoma.

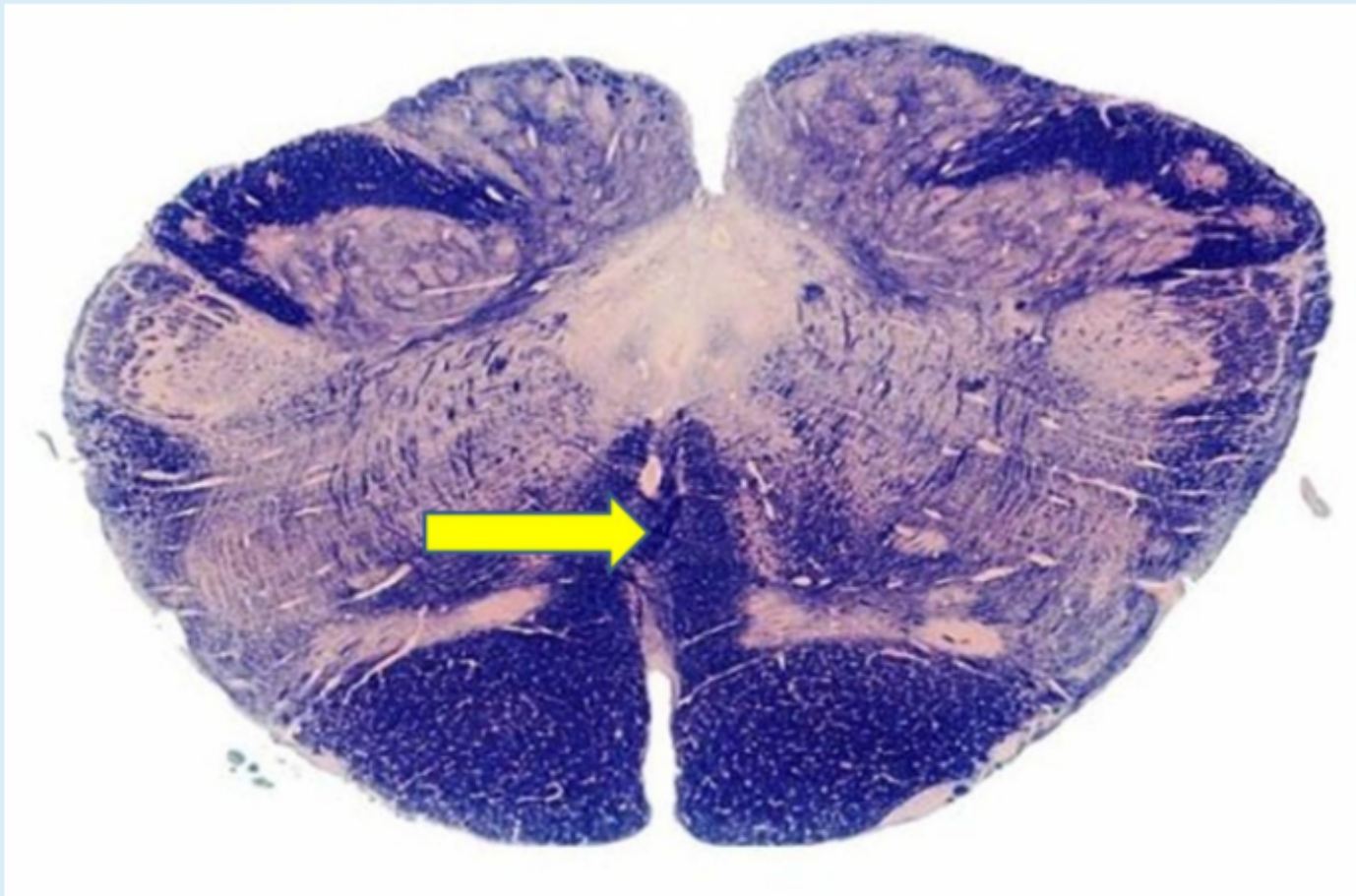
Question 6

Not yet answered

Marked out of 1.00

Flag question

Concerning this Level the pointed structure is-----?



Select one:



a. Sensory decussation.

b. Motor decussation.

c. Gracile and cuneate tract .

d. Inferior cerebellar peduncle .

e. Hypoglossal nerve fibers .

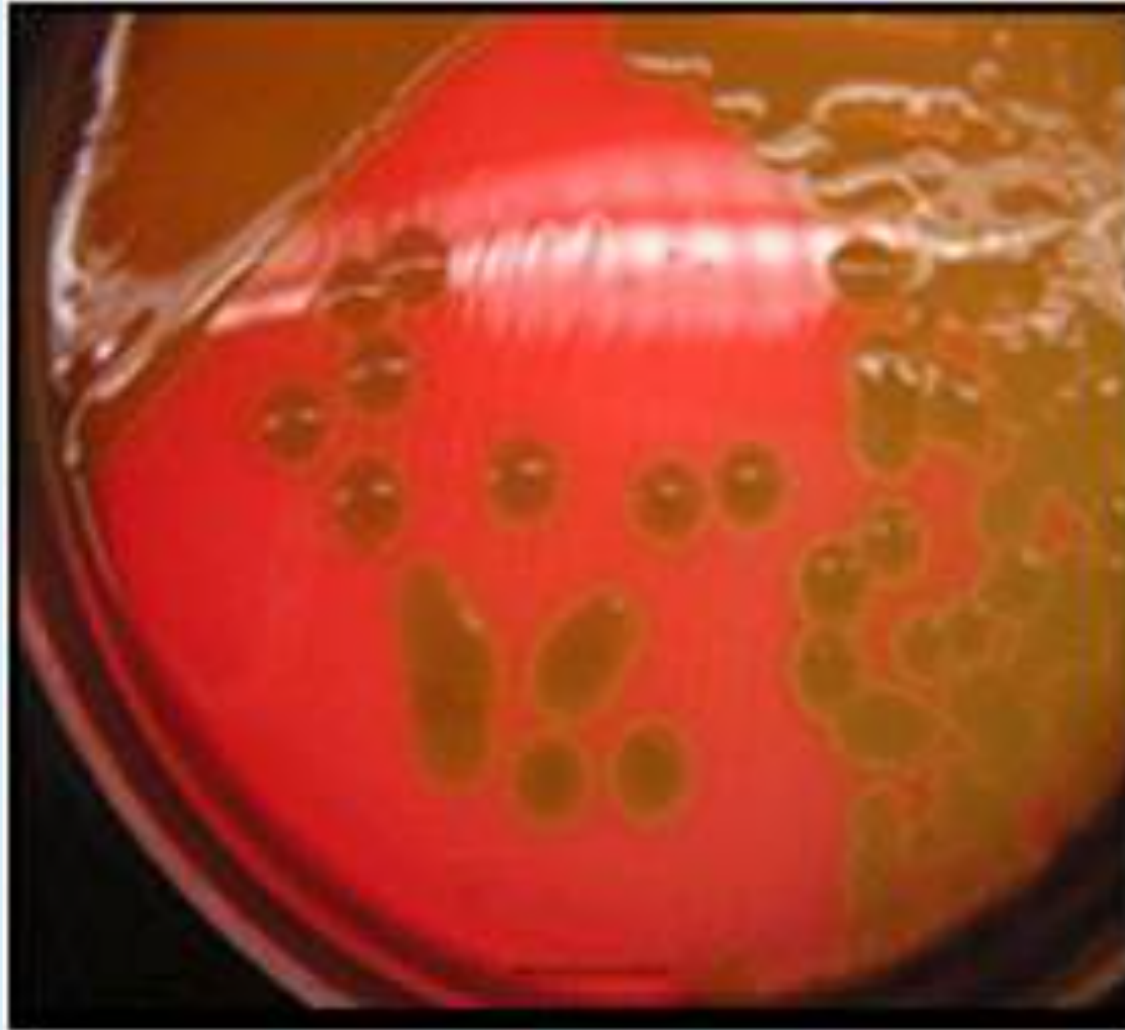
Question 7

Not yet answered

Marked out of 1.00

Flag question

This CSF growth pattern indicates?



Select one:

- a. *M.tuberculosis*.
- b. *S.pneumoniae*.
- c. *S.aureus*.
- d. *N.meningitides*.
- e. *C.neoformans*.

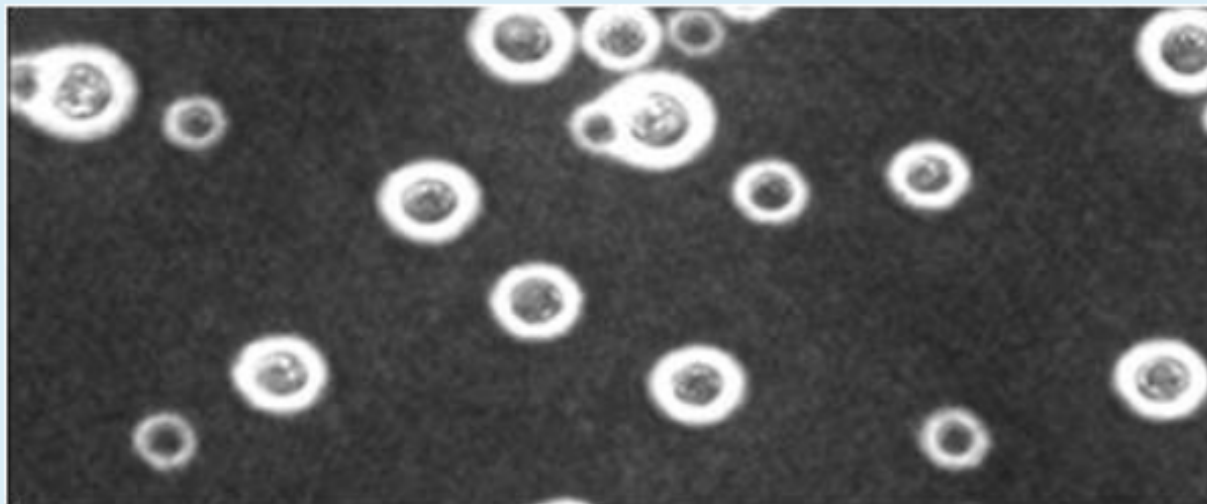
Question 8

Not yet
answered

Marked out of
1.00

Flag
question

This microscopic image indicates?



Select one:

- a. *M. tuberculosis*.
- b. *S. pneumoniae*.
- c. *S. aureus*.
- d. *N. meningitidis*.
- e. *C. neoformans*.

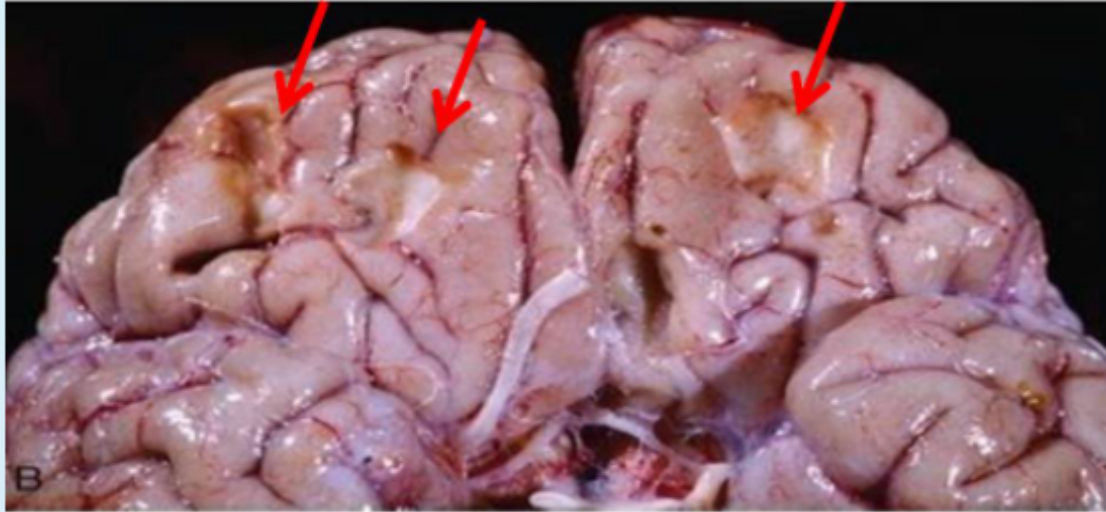
Question 9

Not yet answered

Marked out of 1.00

Flag question

The lesions which highlighted by the red arrows in this brain autopsy related to one correct sentence?



Select one:

- a. They caused by Concussion.
- b. They caused by an old direct parenchymal injury.
- c. They caused by an old traumatic vascular injury.
- d. They caused by a new traumatic vascular injury.
- e. They caused by a new direct parenchymal injury.

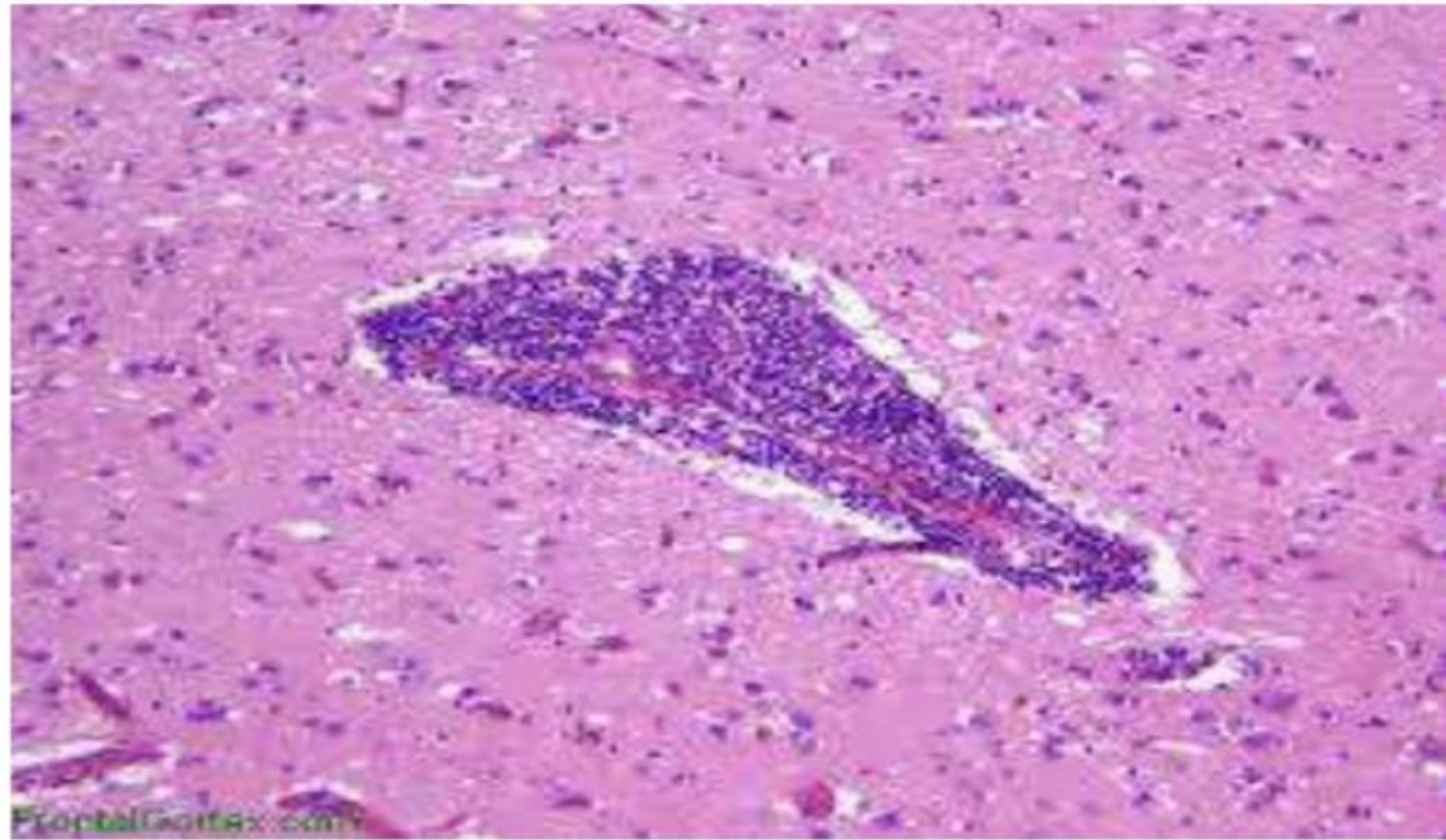
Question 10

Not yet answered

Marked out of 1.00

Flag question

All the following are incorrect regarding the cerebrovascular disease of the CNS which showing in this picture, except?



Select one:

- a. Is an inflammatory disorder that involves multiple large to medium-sized parenchymal vessels.
- b. Is an inflammatory disorder that involves focal small subarachnoid vessels.
- c. May be caused by opportunistic infection in the setting of immunosuppression.
- d. Characterized by acute inflammation, multinucleated giant cells.
- e. Characterized by destruction of the vessel wall.



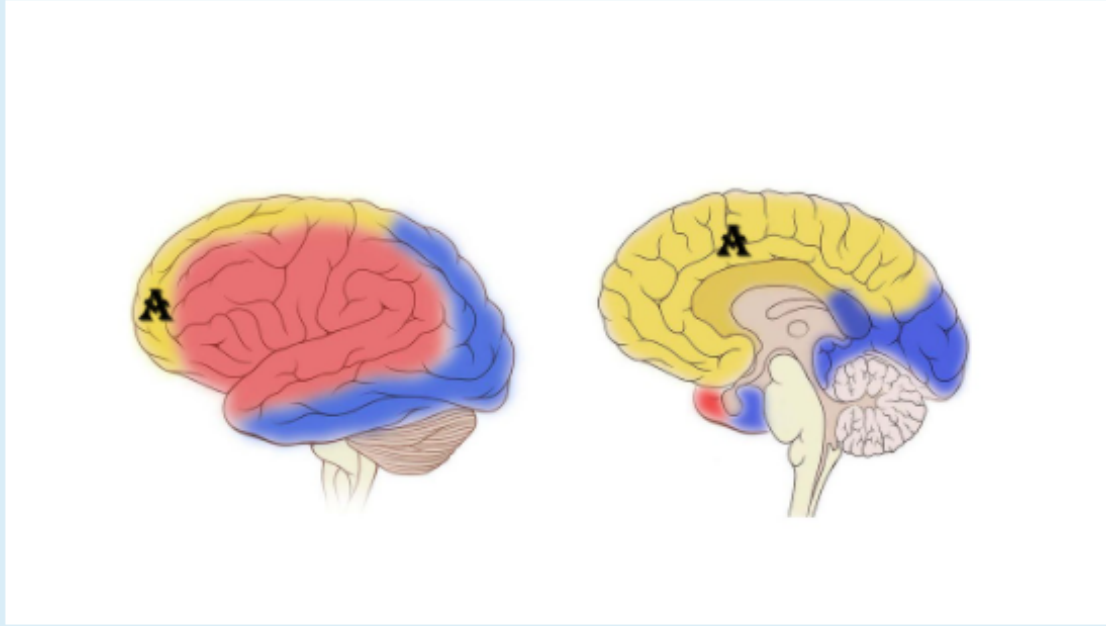
Question 11

Not yet answered

Marked out of 1.00

Flag question

The blood supply of the yellow area (A) comes from?



Select one:

- a. Internal Carotid Artery
- b. Middle Cerebral Artery
- c. Vertebral Artery
- d. Anterior Cerebral Artery
- e. Posterior Cerebral Artery

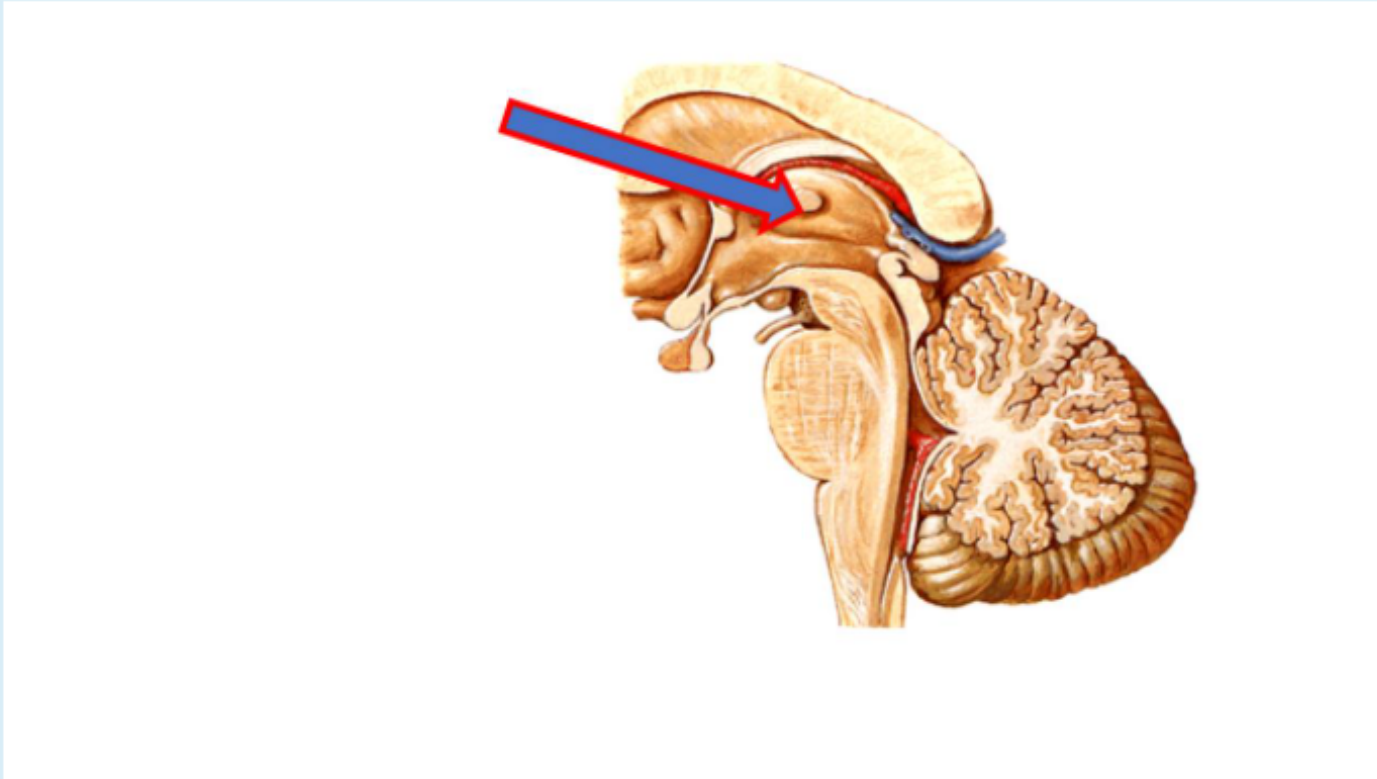
Question 12

Not yet answered

Marked out of 1.00

Flag question

What is the labeled structure?



Select one:

- a. Epithalamus
- b. Thalamus
- c. Hypothalamus
- d. Metathalamus
- e. Metathalamus

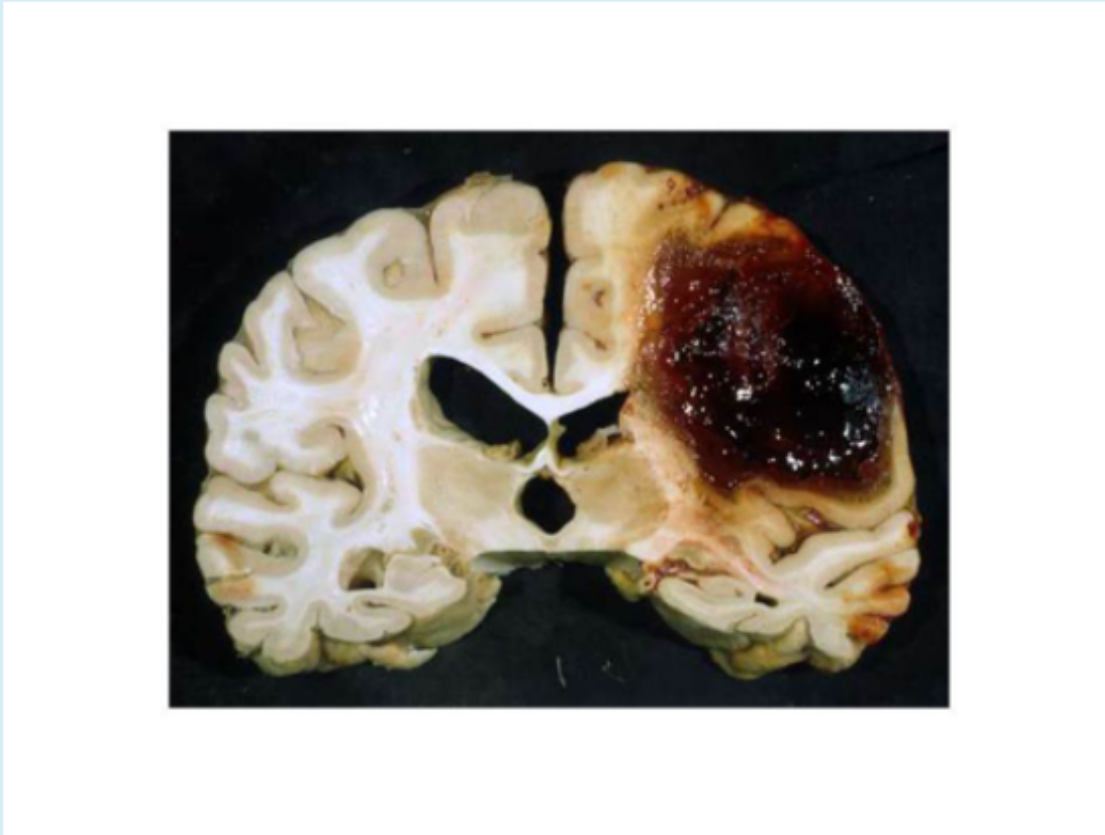
Question 13

Not yet answered

Marked out of 1.00

Flag question

The main cause of this brain lesion is?



Select one:

- a. Lacunar infarct.
- b. Lobar intraparenchymal hemorrhage.
- c. Slit hemorrhage.
- d. Basal ganglia hemorrhage.
- e. Cerebral Amyloid Angiopathy.

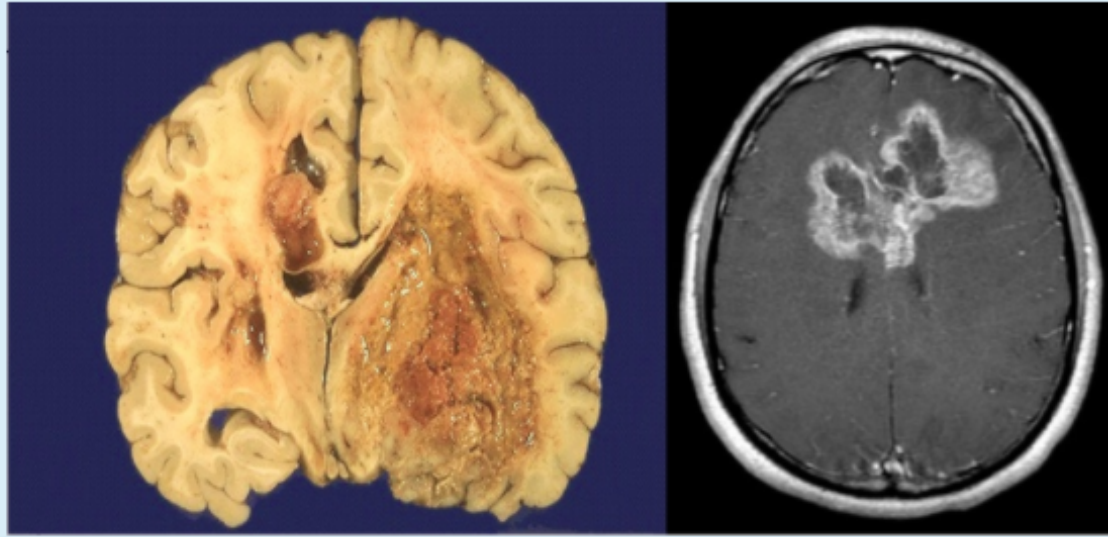
Question 14

Not yet
answered

Marked out of
1.00

Flag
question

Which WHO grade will the microscopic examination of these tumors mostly reveal?



Select one:

- a. WHO grade V
- b. WHO grade IV
- c. WHO grade III
- d. WHO grade II
- e. WHO grade I

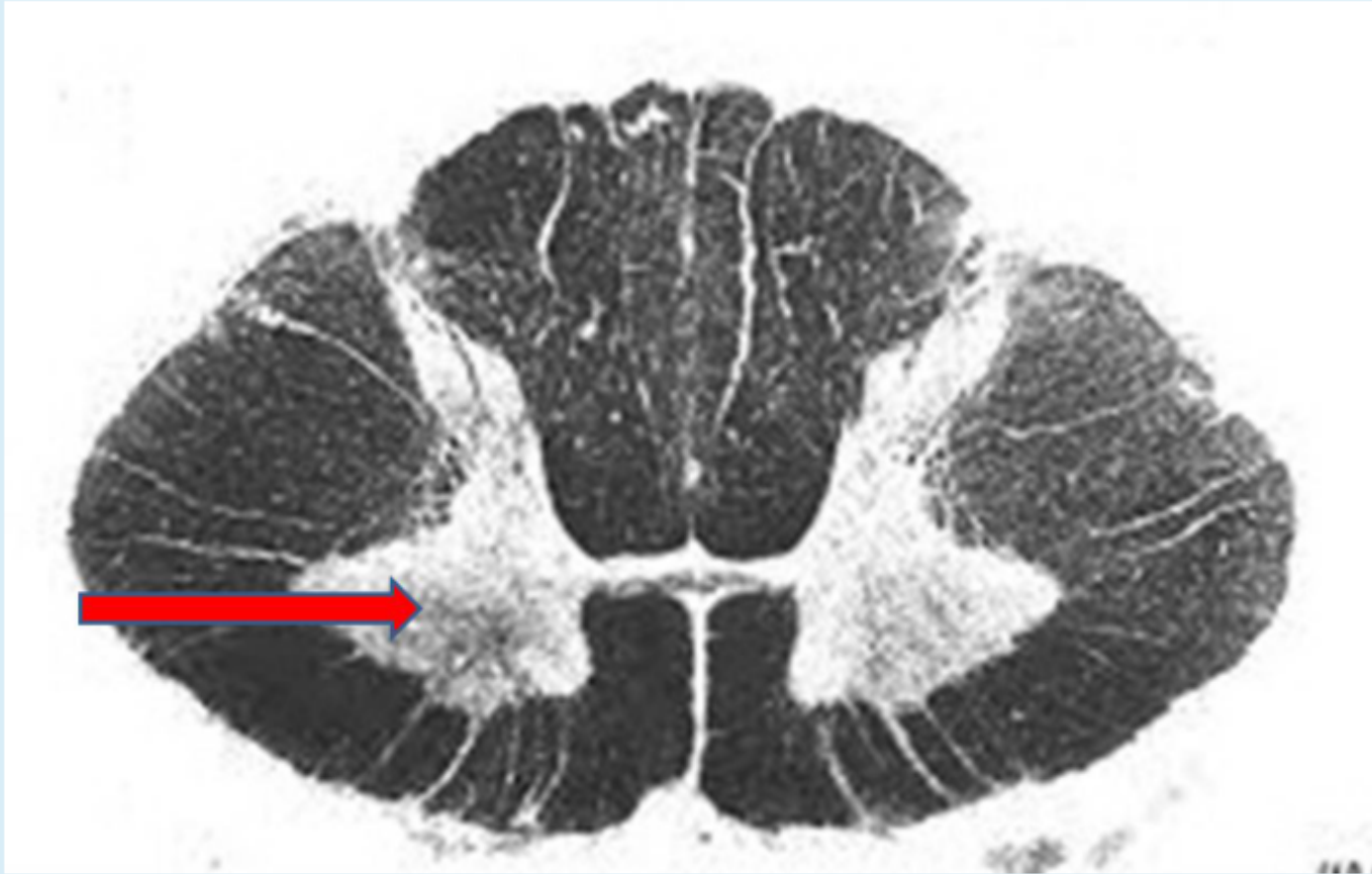
Question 15

Not yet answered

Marked out of 1.00

Flag question

The pointed structure contains----- ?



Select one:

- a. Two motor nuclei
- b. Two sensory nuclei
- c. Contain sympathetic nuclei
- d. Three sensory nuclei .
- e. Five motor nuclei .



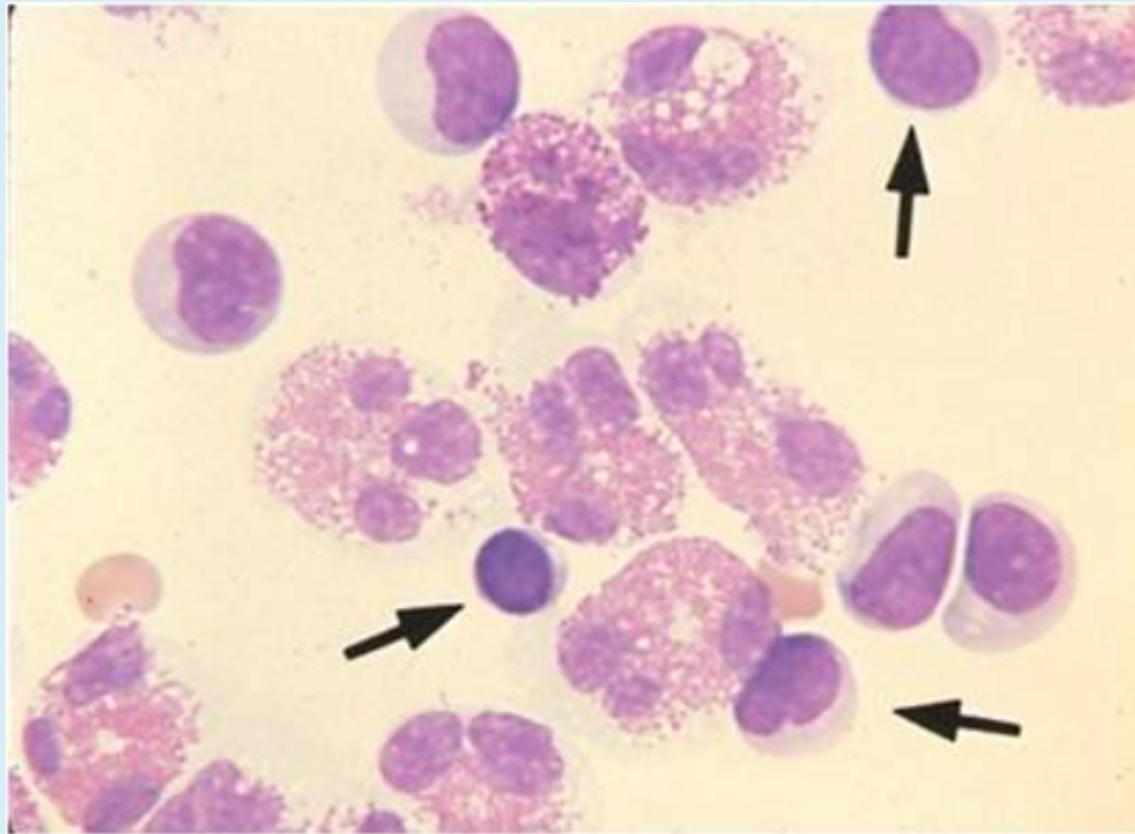
Question 16

Not yet answered

Marked out of 1.00

Flag question

This CSF stained smear indicates?



Select one:

- a. Viral infection.
- b. Parasitic infection.
- c. Bacterial infection.
- d. Tubercular infection.
- e. Bacterial infection and tubercular infection.

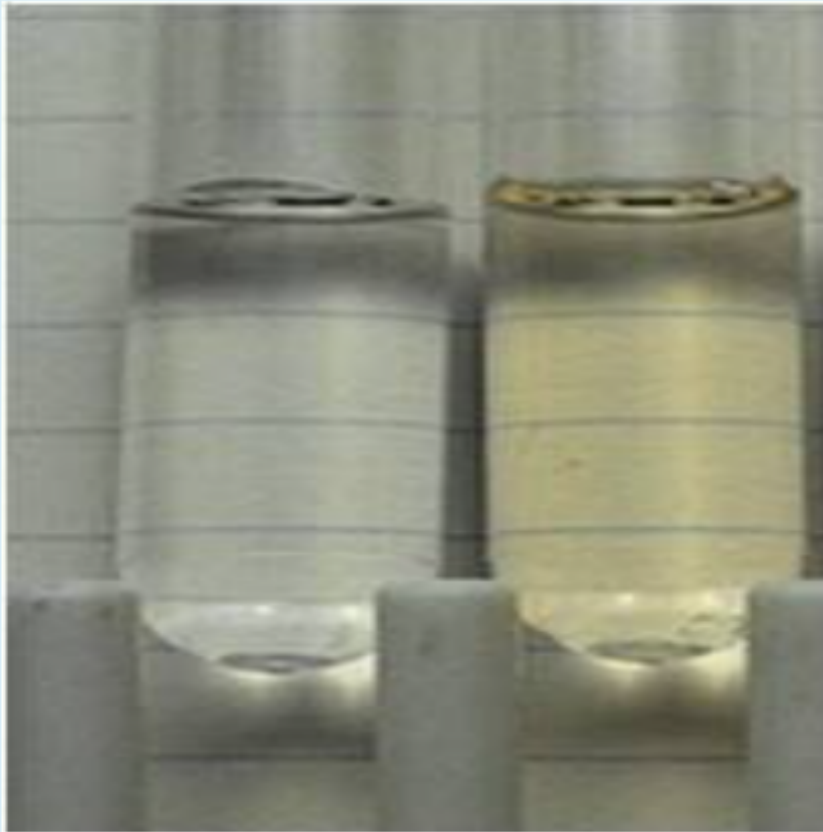
Question 17

Not yet answered

Marked out of 1.00

Flag question

Which of the following conditions should be used to store a CSF sample for serology if there is a delay in processing?



Select one:

- a. Storing at room temp.
- b. Refrigeration.
- c. Freezing.
- d. Storing at 37°C.
- e. Should not be stored under any condition.

Question 18


Not yet
answered

Marked out of
1.00

Flag
question

Pendular knee Jerk occurs in the following conditions, except?

Select one:

- a. Neocerebellar syndrome.
- b. Thalamic syndrome.
- c. Chorea.
-  d. Damage in the internal capsule.
- e. Selective lesion in motor area "4" or pyramid of medulla oblongata.

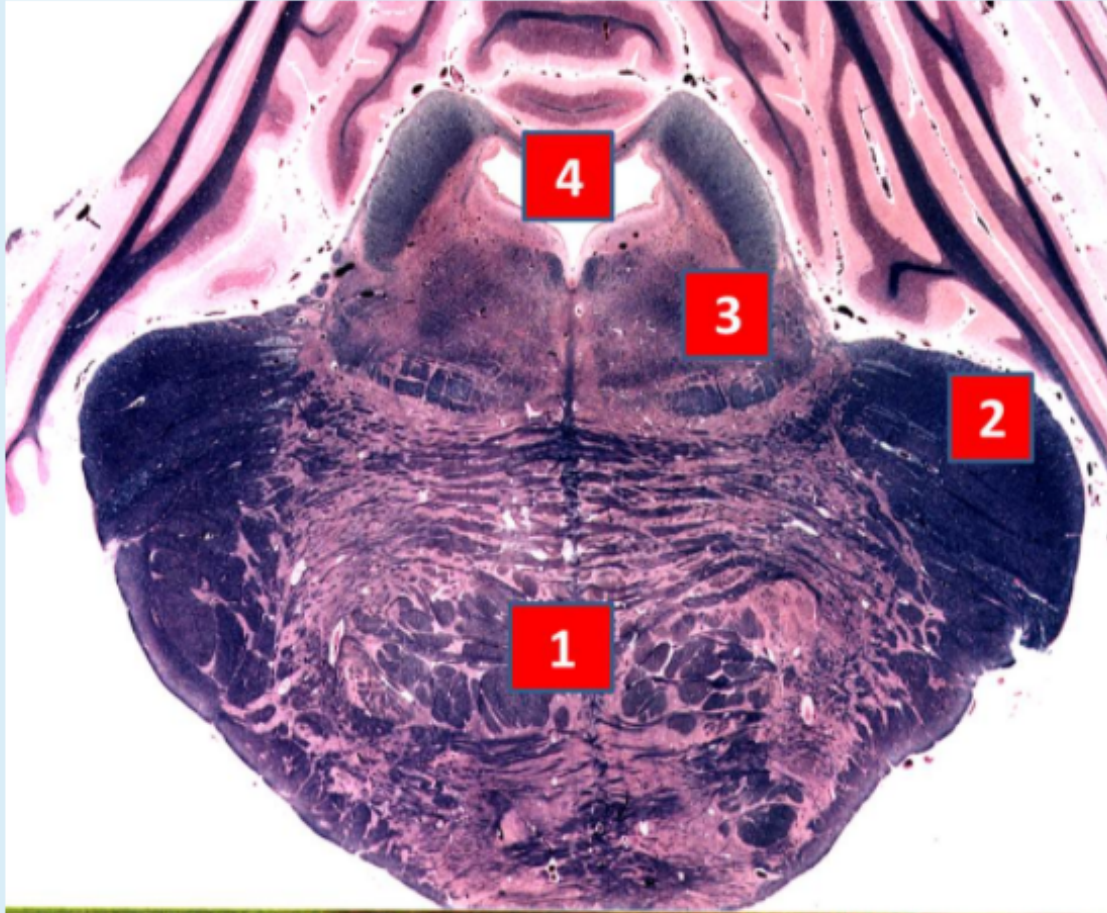
Question 19

Not yet answered

Marked out of 1.00

Flag question

This level Characterized by-----?



Select one:



- a. Trigeminal nerve nuclei
- b. Closed 4th ventricle
- c. Facial nerve and trapezoid body
- d. Red nucleus and superior colliculus
- e. Hypoglossal nerve fibers

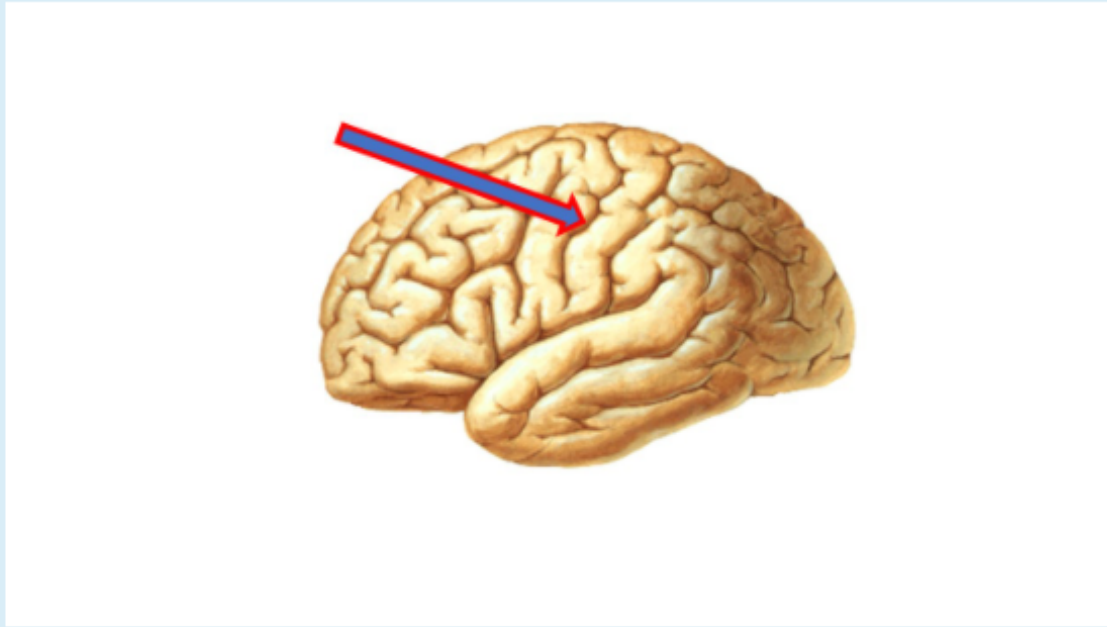
Question 20

Not yet answered

Marked out of 1.00

Flag question

What is the labeled structure?



Select one:

- a. Precentral sulcus
- b. Temporal sulcus
- c. Parietooccipital sulcus
- d. Central sulcus
- e. Postcentral sulcus

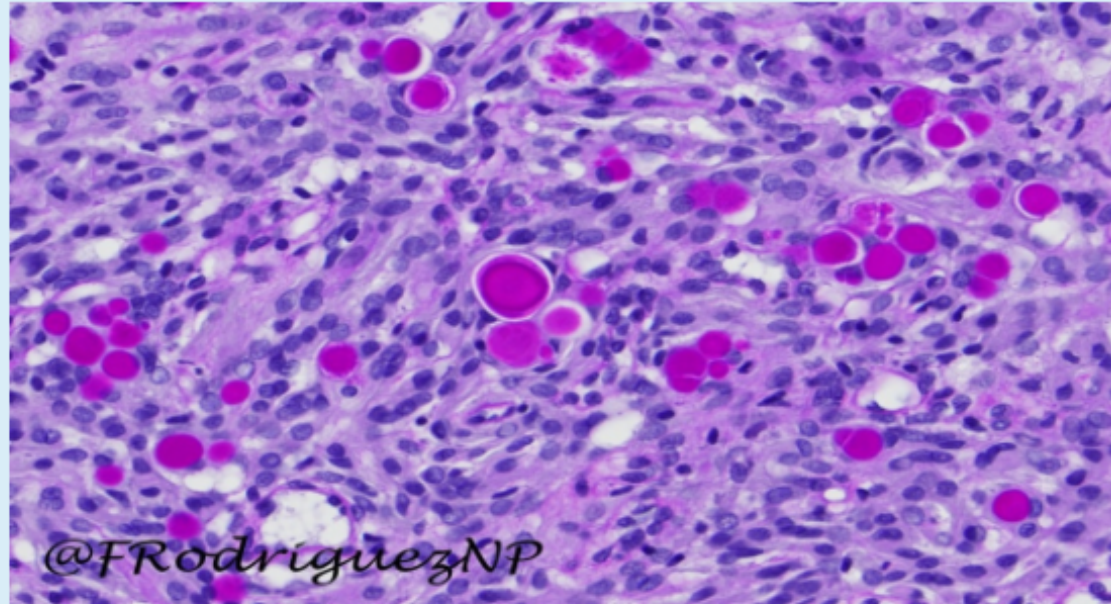
Question 21

Not yet answered

Marked out of 1.00

Flag question

What do you call the meningioma histologic pattern seen in this section?




Select one:

- a. Psammomatous
- b. Fibroblastic
- c. Transitional
- d. Secretory
- e. Meningothelial.

Question 22


Not yet
answered

Marked out of
1.00

 Flag
question

Center of Biceps deep reflex are located in?

Select one:

- a. Cervical 1, 2
-  b. Cervical 5, 6
- c. Lumbar 1, 2, 3
- d. Lumbar 4, 5
- e. Sacral 1, 2

Question 23


Not yet
answered

Marked out of
1.00

 Flag
question

Tendon Jerk may be exaggerated (i.e hyperreflexia) in?

Select one:

- a. Coma
- b. Sleep
-  c. Hypocalcemia
- d. Anaesthesia
- e. Myxoedema

Question 24

Not yet answered

Marked out of 1.00

Flag question

What is the labeled structure?



Select one:



a. Anterior limb of the internal capsule



b. Claustrum



c. Head of caudate nucleus



d. Lentiform nucleus



e. Thalamus

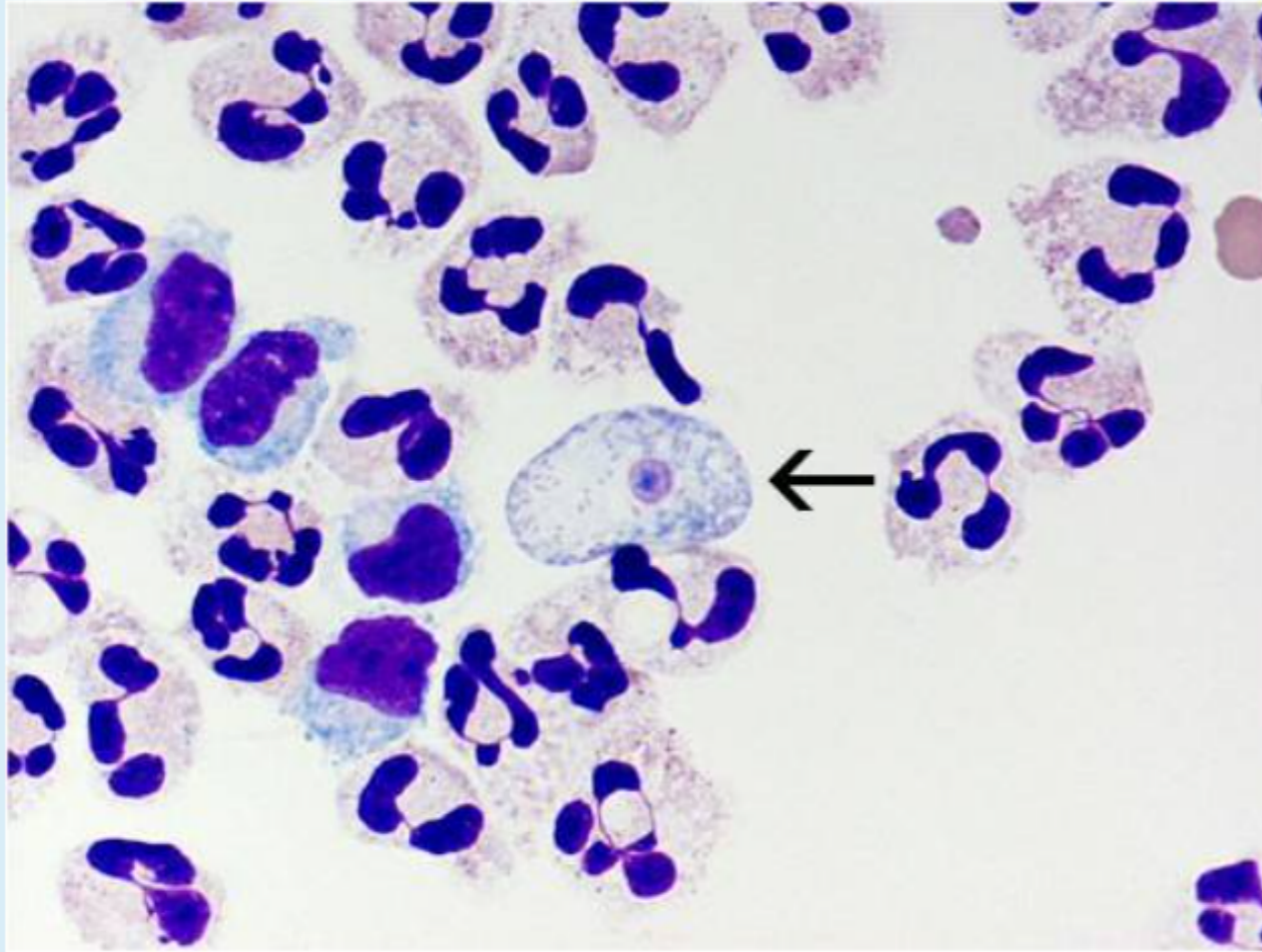
Question 25

Not yet answered

Marked out of 1.00

Flag question

All are correct regarding this CSF sample EXCEPT?



Select one:

- a. Amoeba infection.
- b. Amoebas' infection can be identified by wet mount preparation.
- c. Amoeba is movable under wet mount preparation.
- d. If a delay in processing, the original sample can be stored at -70°C. XXX
- e. The arrow indicates *N. fowleri* trophozoite.

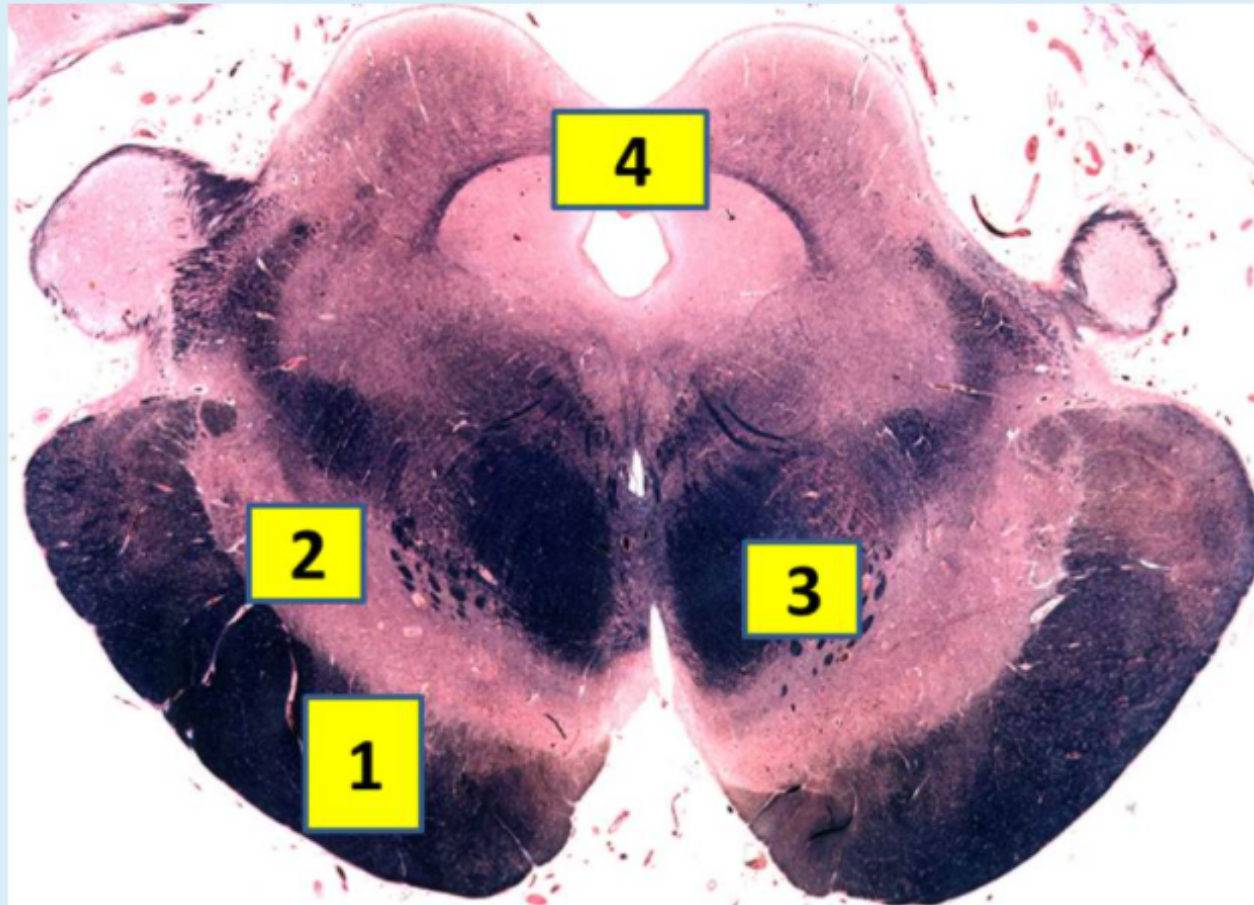
Question 26

Not yet answered

Marked out of 1.00

Flag question

The prominent structure in this level is ----- ?



Select one:

- a. Central canal
- b. Motor decussation.
- c. Red nucleus and superior colliculus
- d. Facial nerve and trapezoid body
- e. Inferior cerebellar peduncle .

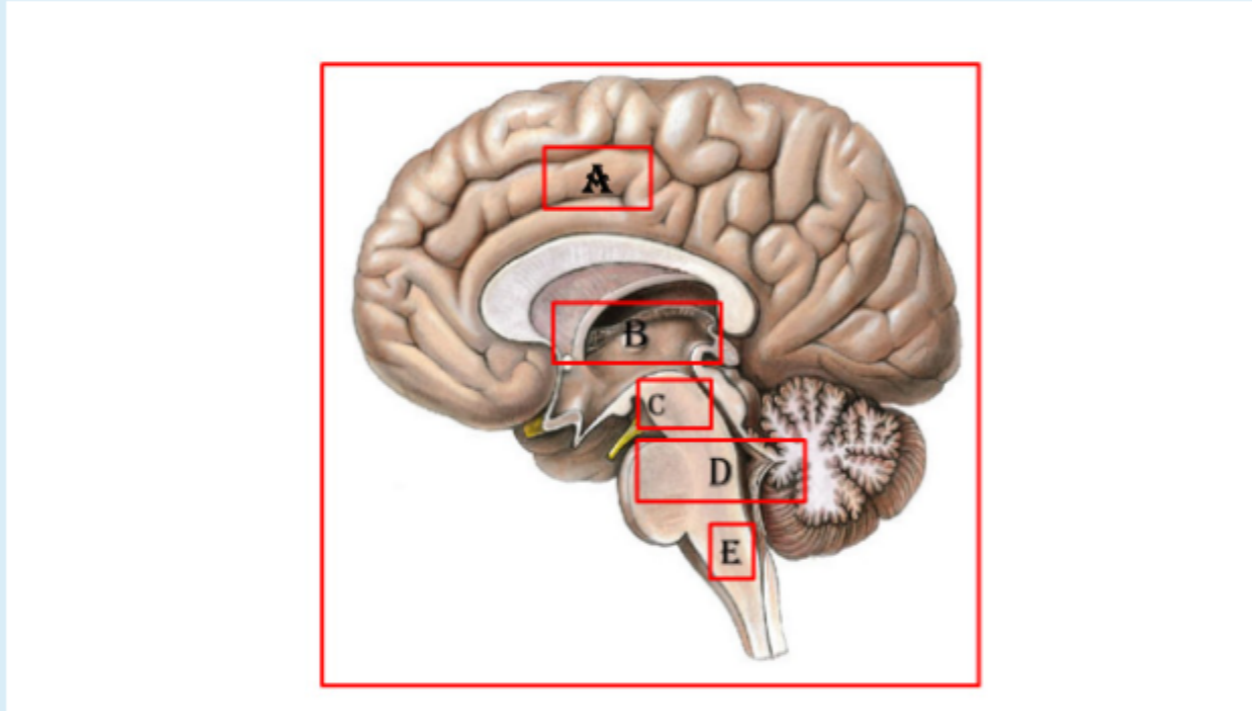
Question 27

Not yet answered

Marked out of 1.00

Flag question

Metencephalon LABELLED with letter?



Select one:

- a. A
- b. B
- c. C
- d. D
- e. E

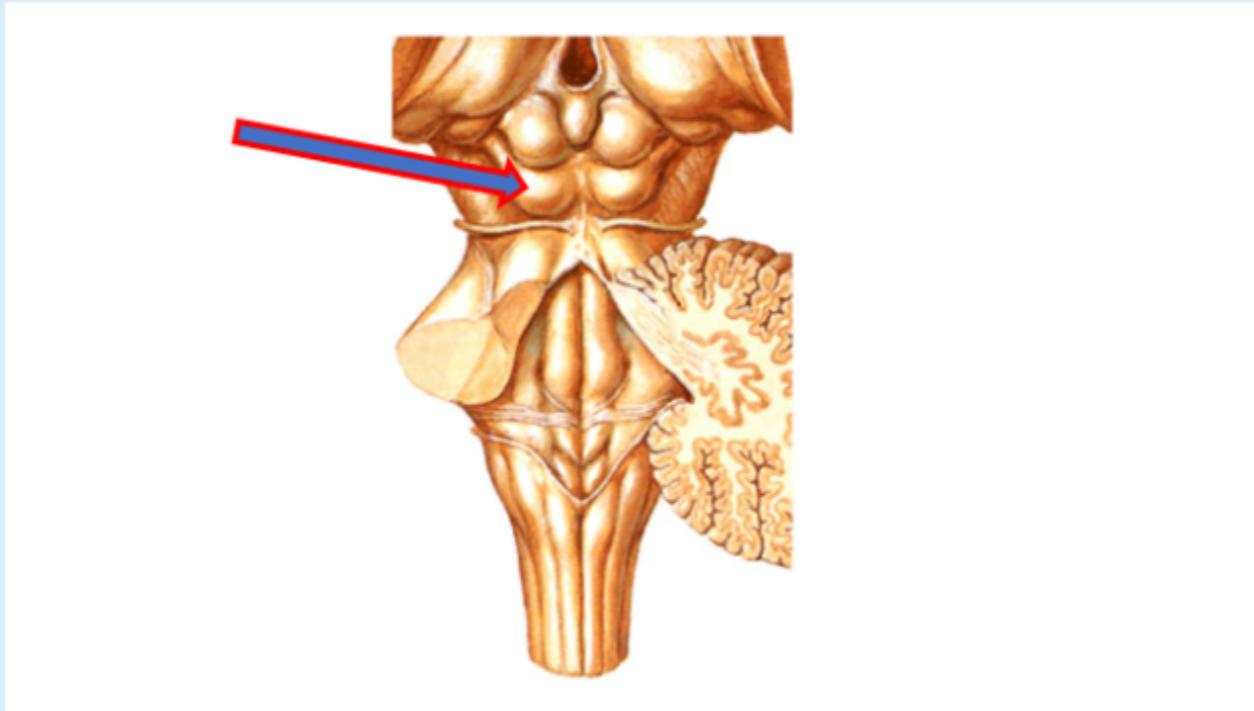
Question 28

Not yet answered

Marked out of 1.00

Flag question

What is the labeled structure?



Select one:

- a. Superior colliculus
- b. Facial colliculus
- c. Superior cerebellar peduncle
- d. Middle cerebellar peduncle
- e. Inferior colliculus



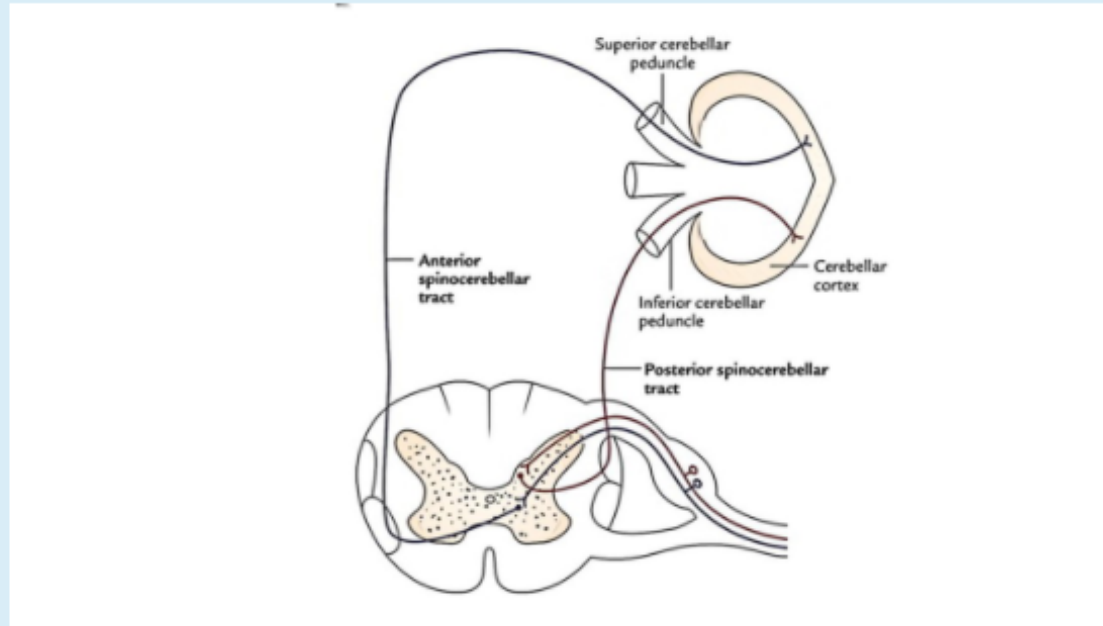
Question 29

Not yet answered

Marked out of 1.00

Flag question

This figure displays the spinocerebellar tracts. However, one pathway is not correct, can you explain what is wrong in this figure?



Select one:

- a. Axons of both tracts should enter the cerebellum via the superior cerebellar peduncle
- b. Axons of both tracts should enter the cerebellum via the inferior cerebellar peduncle
- c. Axons of anterior spinocerebellar tracts should enter the contralateral cerebellum via the superior cerebellar peduncle
- d. Axons of posterior spinocerebellar tracts should enter the ipsilateral cerebellum via the inferior cerebellar peduncle
- e. Axons of anterior spinocerebellar tracts should enter the ipsilateral cerebellum via the middle cerebellar peduncle

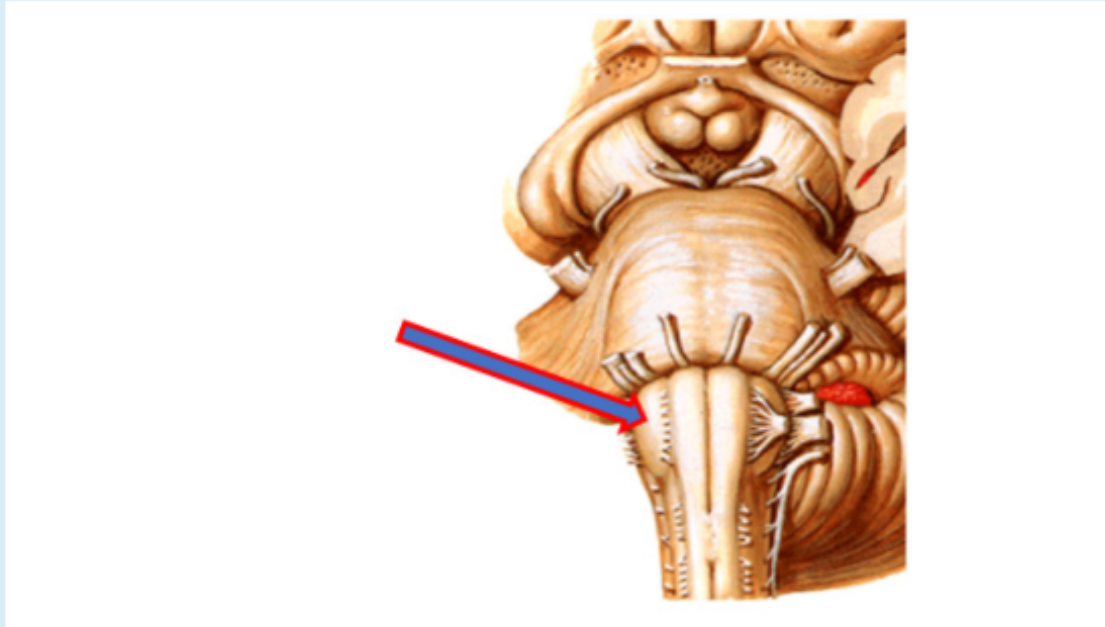
Question 30

Not yet answered

Marked out of 1.00

Flag question

What is the labeled structure?



Select one:



a. Olive

b. Pyramid

c. Anterolateral sulcus


d. Roots of hypoglossal nerve

e. Posterolateral sulcus

Question 31

Not yet
answered

Marked out of
1.00

 Flag
question

All the following are Superficial spinal reflexes Except?

Select one:

- a. Planter reflex
- b. Withdrawal reflex.
- c. Stretch reflex (myotatic reflex)
- d. Cremasric reflex.
- e. Abdominal reflex.

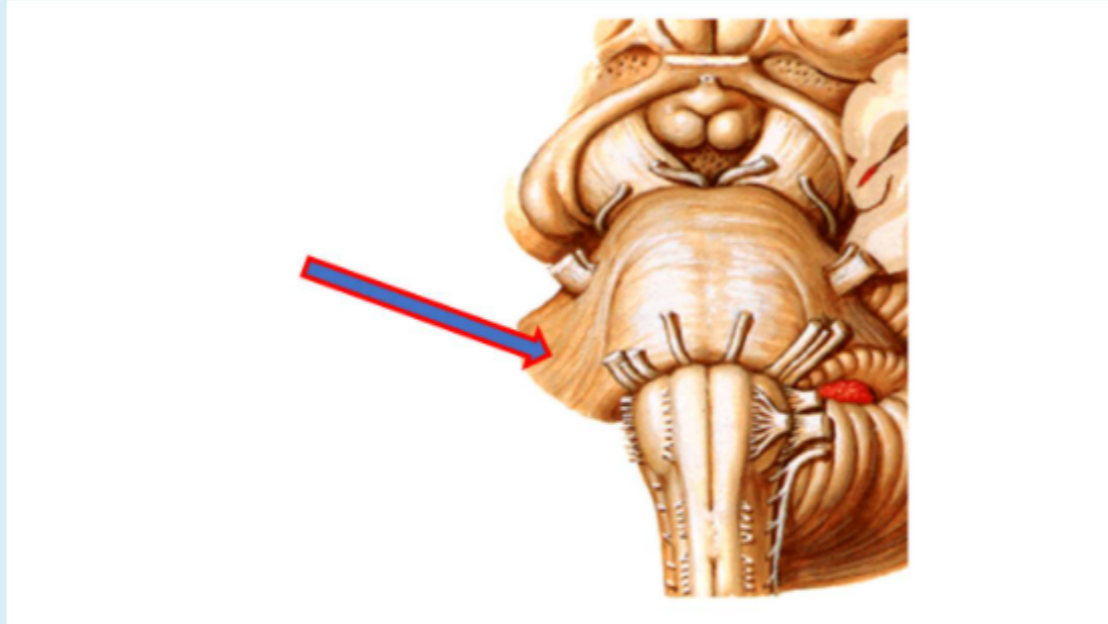
Question 32

Not yet answered

Marked out of 1.00

Flag question

What is the labeled structure?



Select one:

- a. Cerebral peduncle
- b. Superior cerebellar peduncle
- c. Middle cerebellar peduncle
- d. Inferior cerebellar peduncle
- e. Spinal peduncle

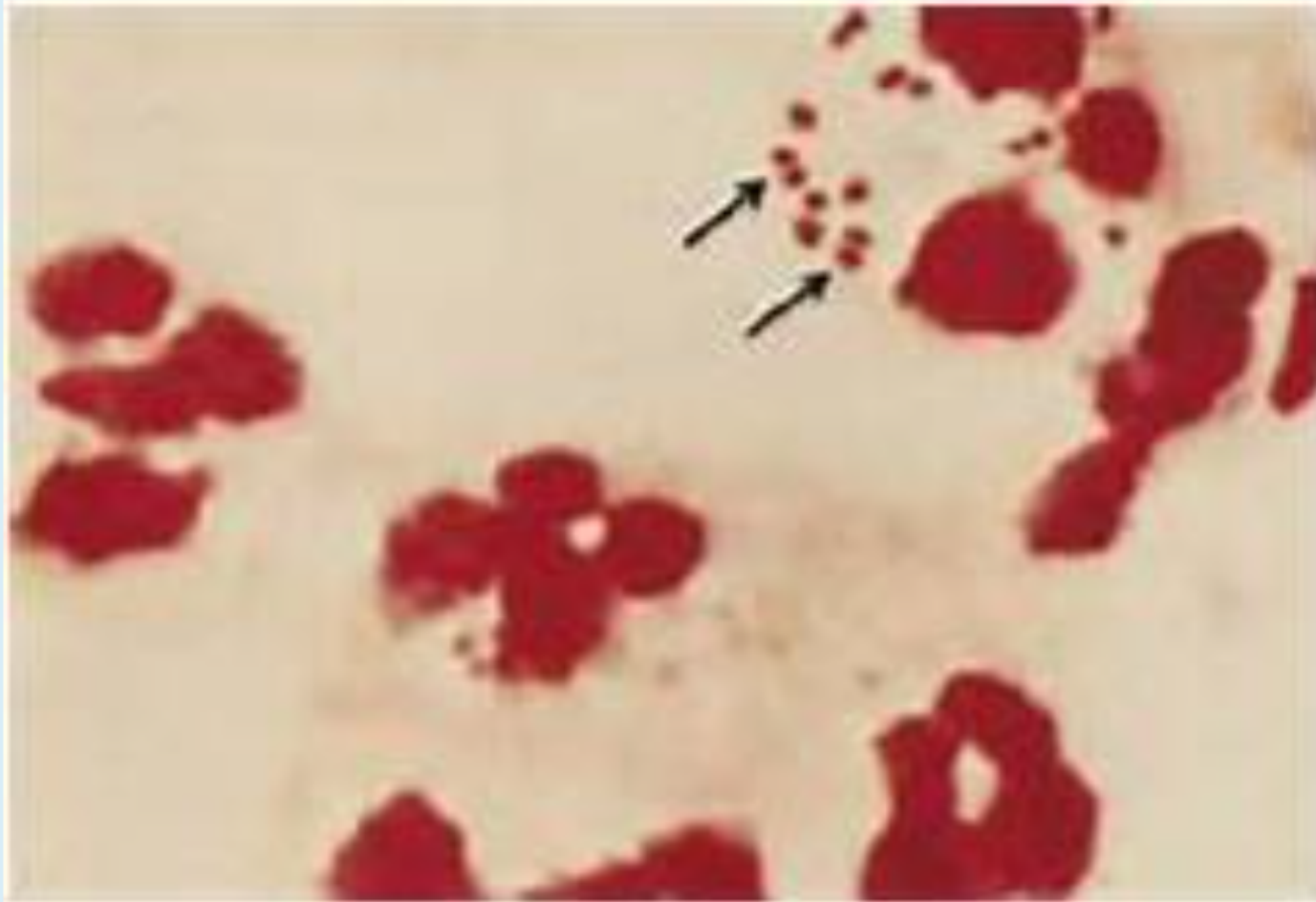
Question 33

Not yet answered

Marked out of 1.00

Flag question

This pattern of infection indicates?



Select one:



- a. *N. meningitidis*.
- b. *S. pneumoniae*.
- c. *S. aureus*.
- d. *L. monocytogenes*.
- e. *C. neoformans*.

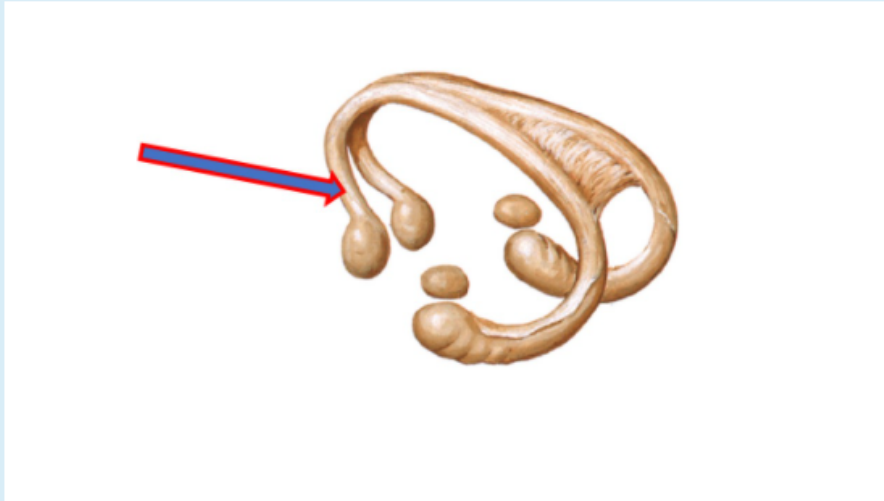
Question 34

Not yet answered

Marked out of 1.00

Flag question

What is the labeled structure?



Select one:

- a. Posterior column of the fornix
- b. Body of the fornix
- c. Fimbria of the hippocampus
- d. Amygdaloid nucleus
- e. Anterior column of the fornix

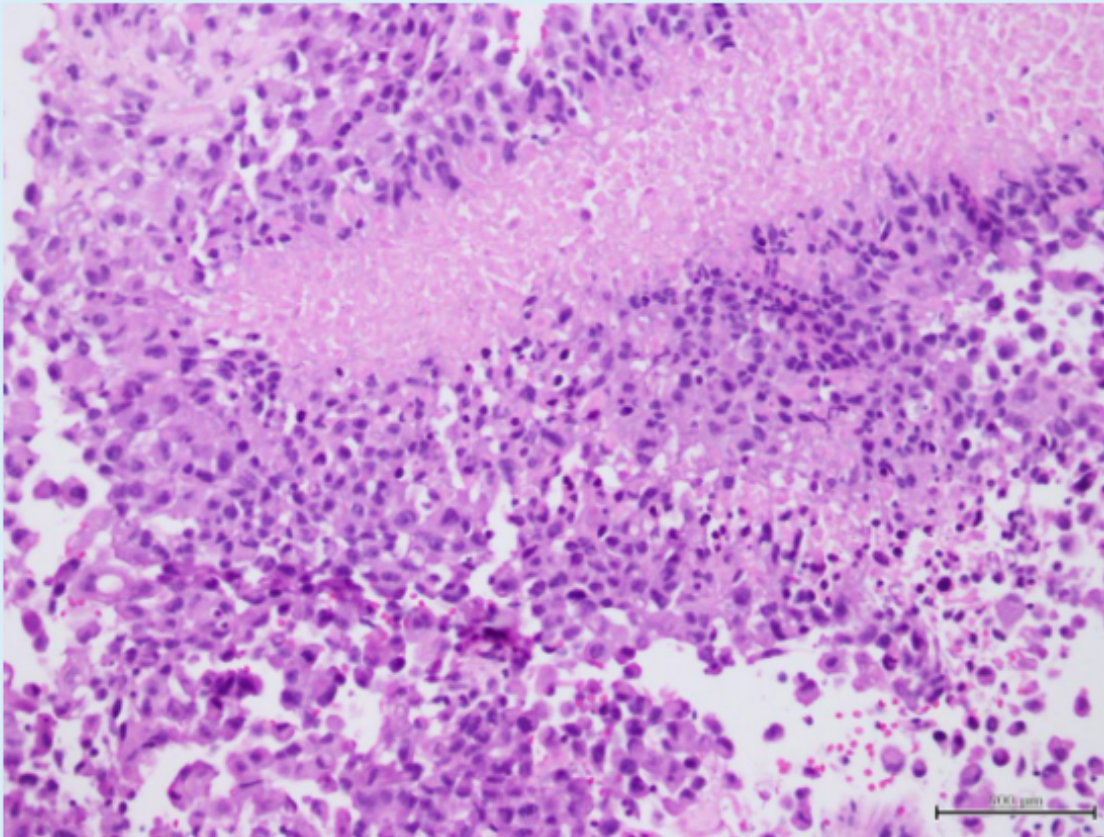
Question 35

Not yet answered

Marked out of 1.00

Flag question

What is the name of the histopathologic feature seen in this section?



Select one:

- a. Homer Wright Rosettes
- b. Ependymal rosettes
- c. Perivascular pseudo-rosettes
- d. Microvascular proliferation
- e. Palisaded necrosis



Question 36

Not yet
answered

Marked out of
1.00

Flag
question

Center of Triceps deep reflex are located in?

Select one:



- a. Cervical 6, 7
- b. Cervical 5, 6
- c. Lumbar 1, 2, 3
- d. Lumbar 4, 5
- e. Sacral 1, 2

Question 37

Not yet answered

Marked out of 1.00

Flag question

What is the labeled structure?



Select one:

- a. Anterior horn of lateral ventricle
- b. Posterior horn of lateral ventricle
- c. Central horn of lateral ventricle
- d. Middle horn of lateral ventricle
- e. Inferior horn of lateral ventricle

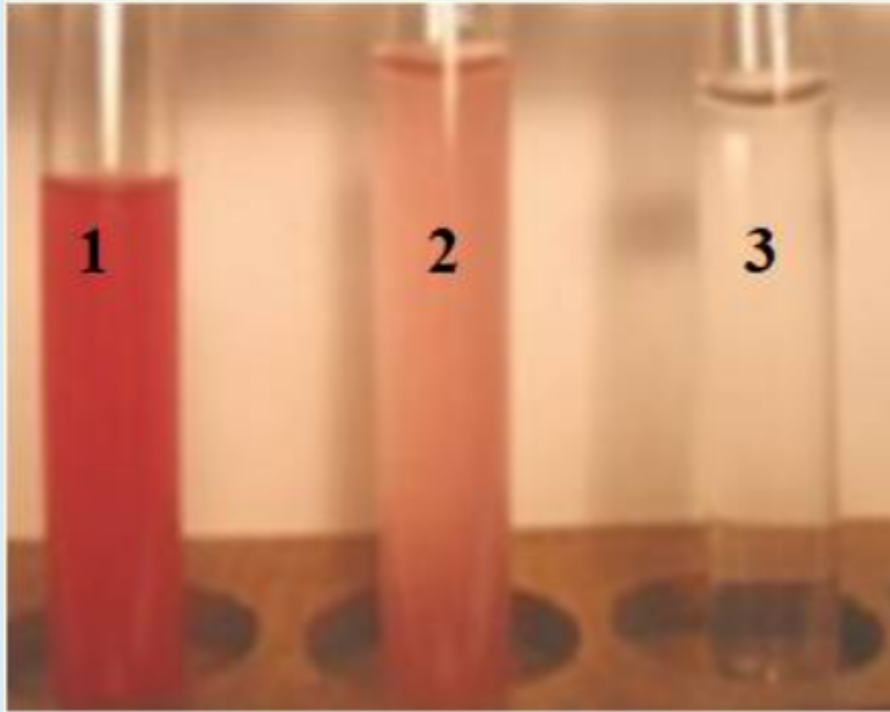
Question 38

Not yet answered

Marked out of 1.00

Flag question

The tube of CSF that should be submitted to count RBCs and WBCs is the tube number?



Select one:

- a. 1.
- b. 2.
- c. 3.
- d. 1 or 2.
- e. Any tube.

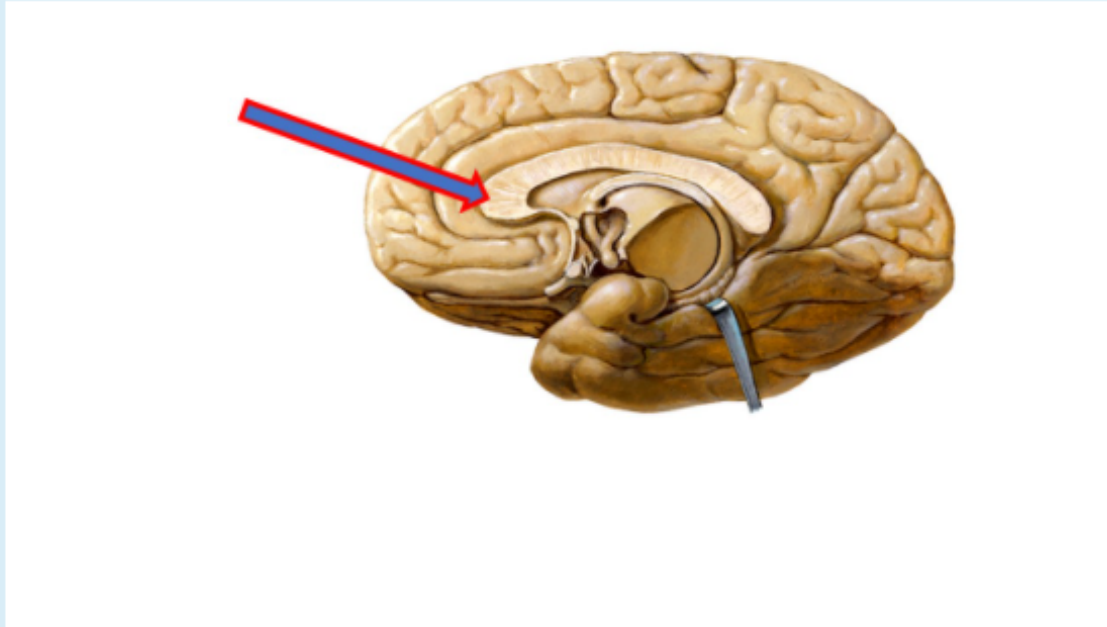
Question 39

Not yet answered

Marked out of 1.00

Flag question

What is the labeled structure?



Select one:

- a. Body of fornix
- b. Genu of corpus callosum
- c. Splenium of corpus callosum
- d. Septum pellucidum
- e. Thalamus

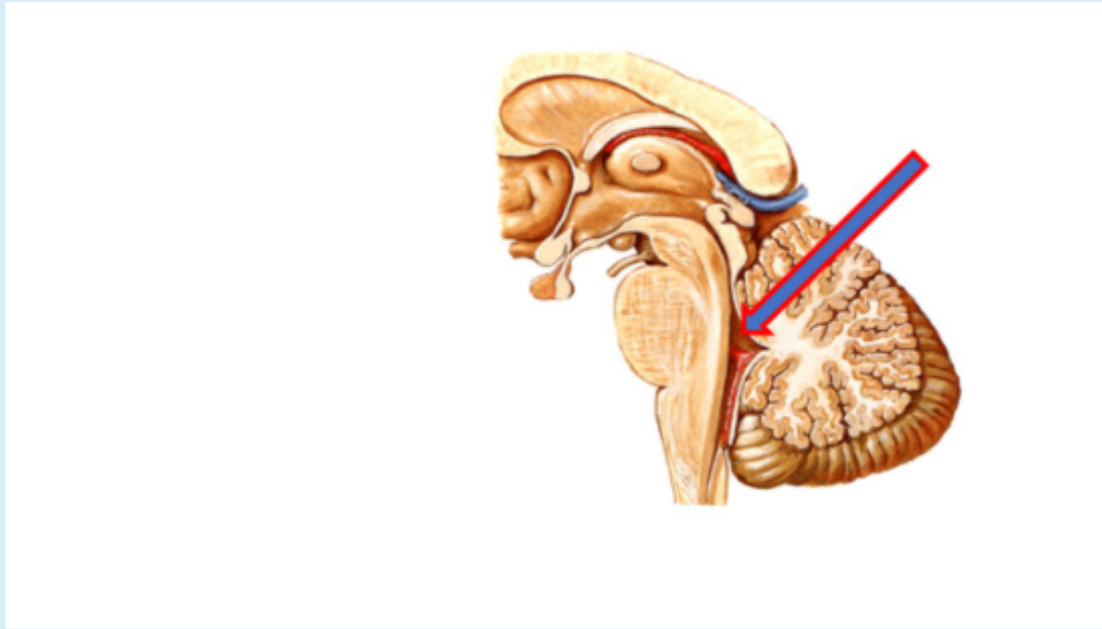
Question 40

Not yet answered

Marked out of 1.00

Flag question

What is the labeled structure?



Select one:

- a. 3rd ventricle
- b. Cerebellum
- c. 4th ventricle
- d. Pons
- e. Medulla oblongata

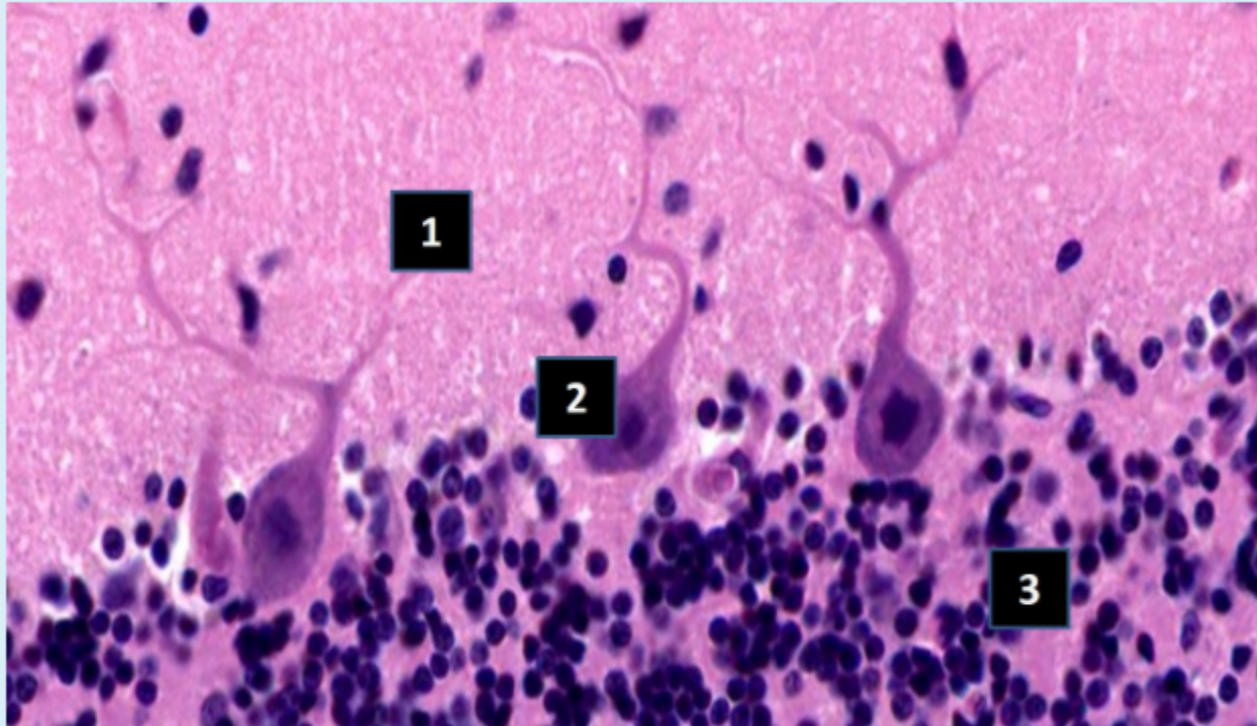
Question 1

Not yet answered

Marked out of 1.00

Flag question

Layer number (3) contains-----?



Select one:

- a. Basket cell , neuroglia and Climbing fibers.
- b. Cell of cajal , , neuroglia and mossy fibers
- c. Cell of Cajal , Climbing fibers , and Cerebellar glomeruli .
- d. Granule , Golgi cell , mossy fibers and Cerebellar glomeruli
- e. Granule , Fusiform cells , mossy fibers and Cerebellar glomeruli