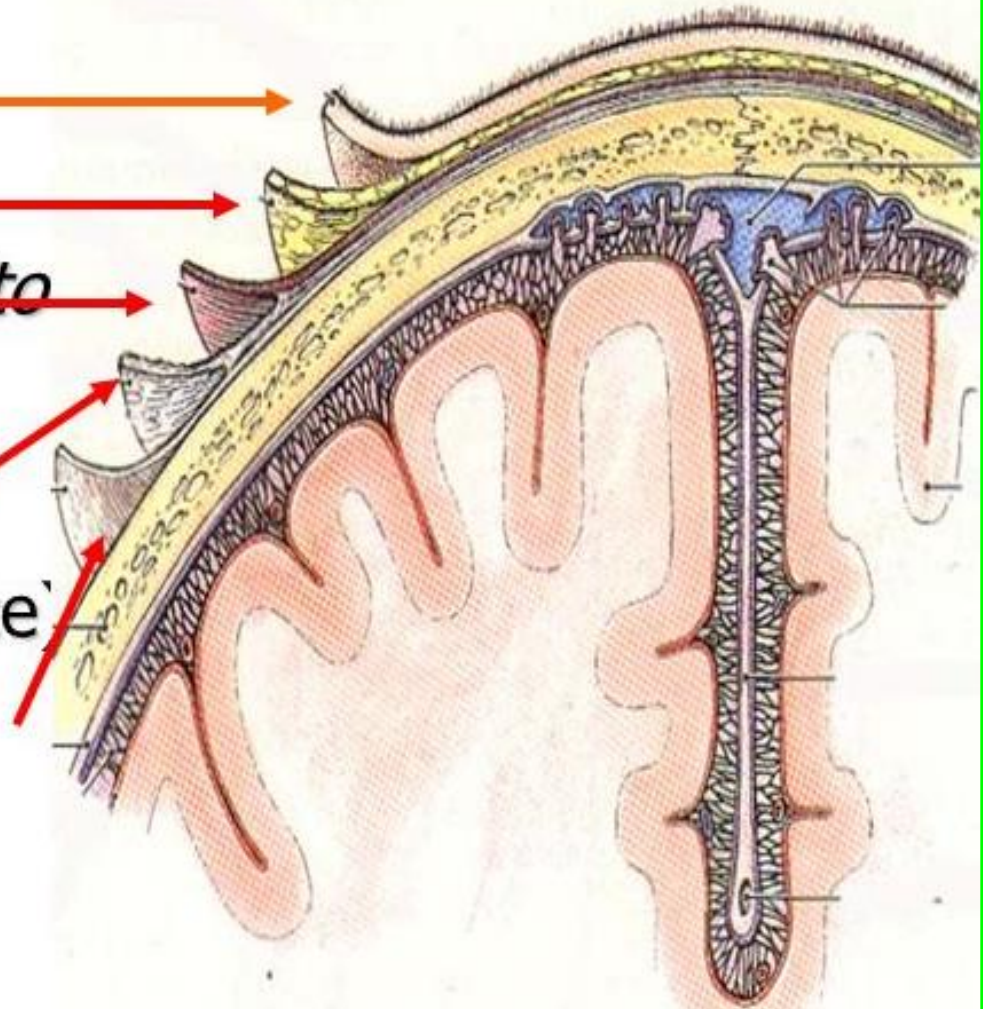
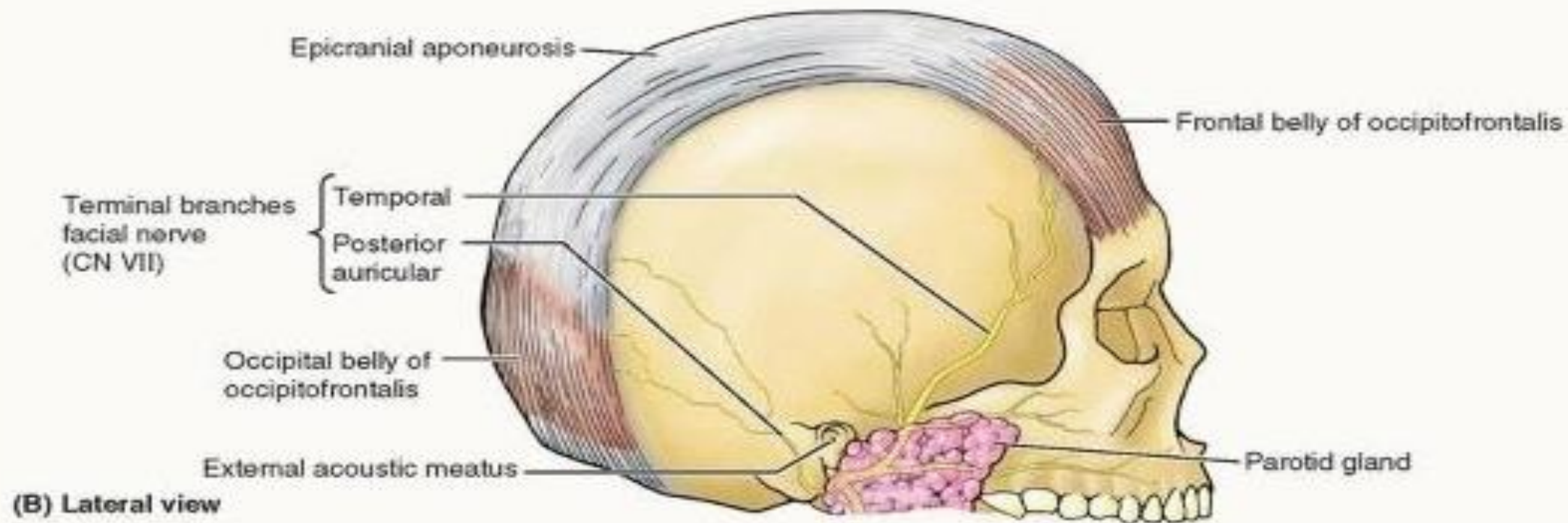


Layers of the scalp

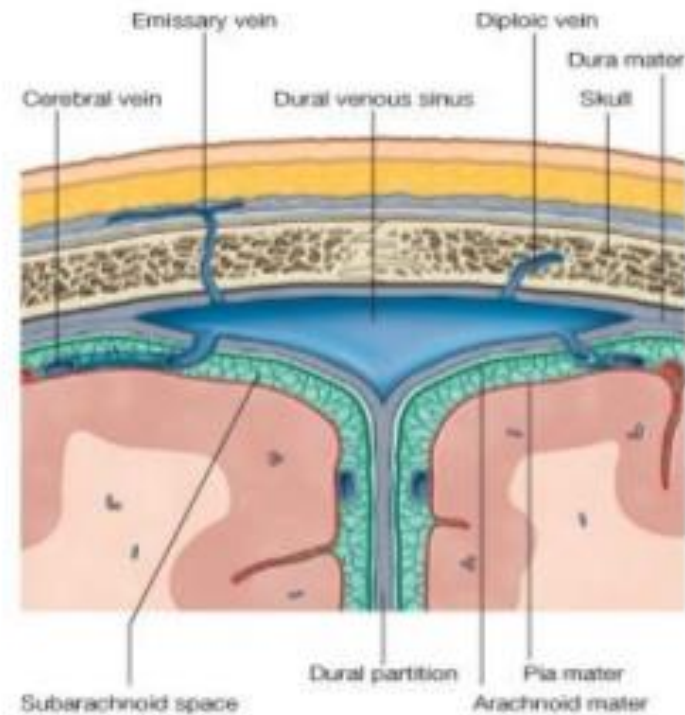
- S** = *skin*
- C** = *connective tissue*
- A** = *aponeurosis of occipito Frontalis*
- L** = *loose areolar C.T.*
(subaponeurotic space)
- P** = *pericranium*
(*periosteum*)

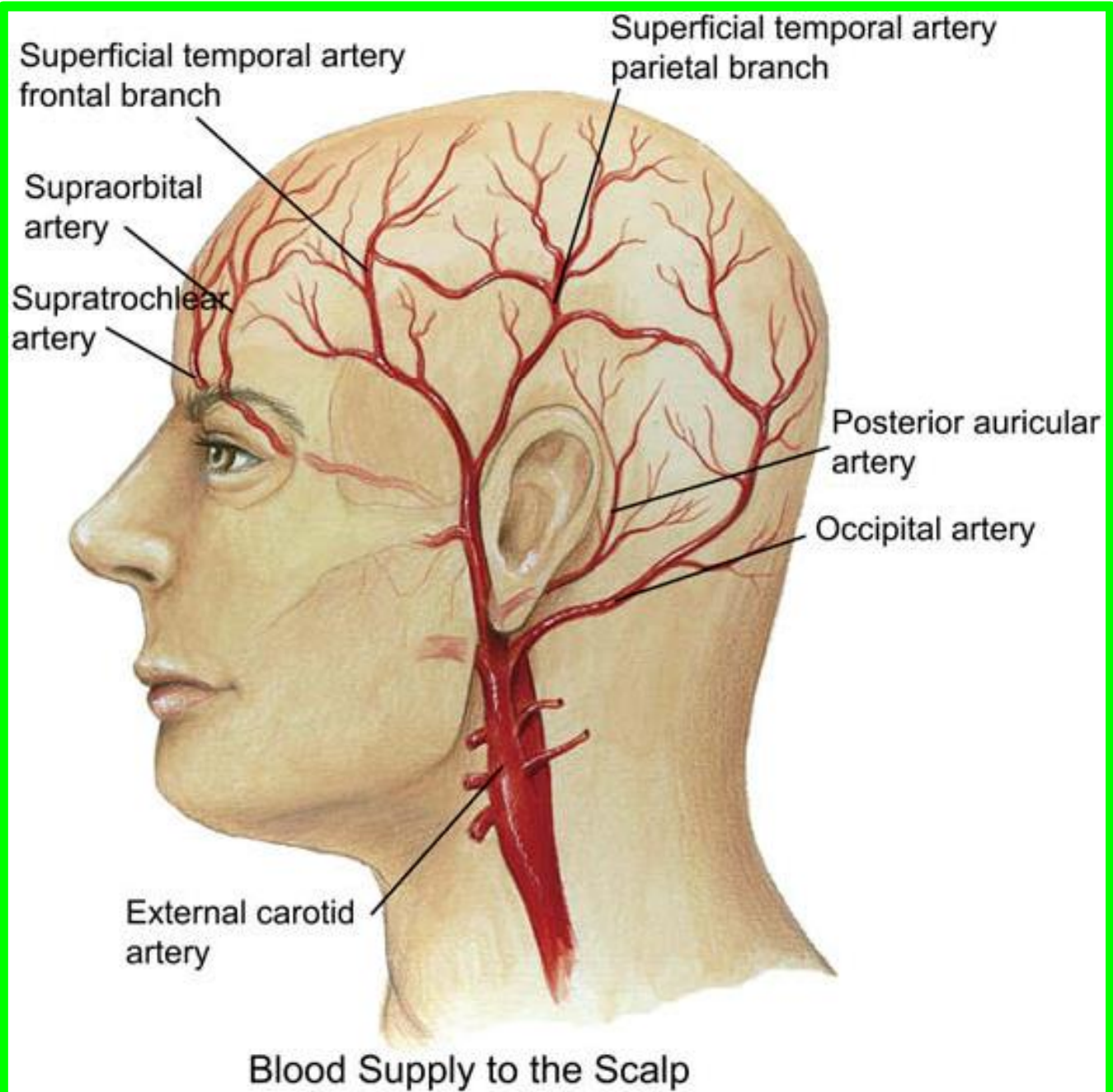


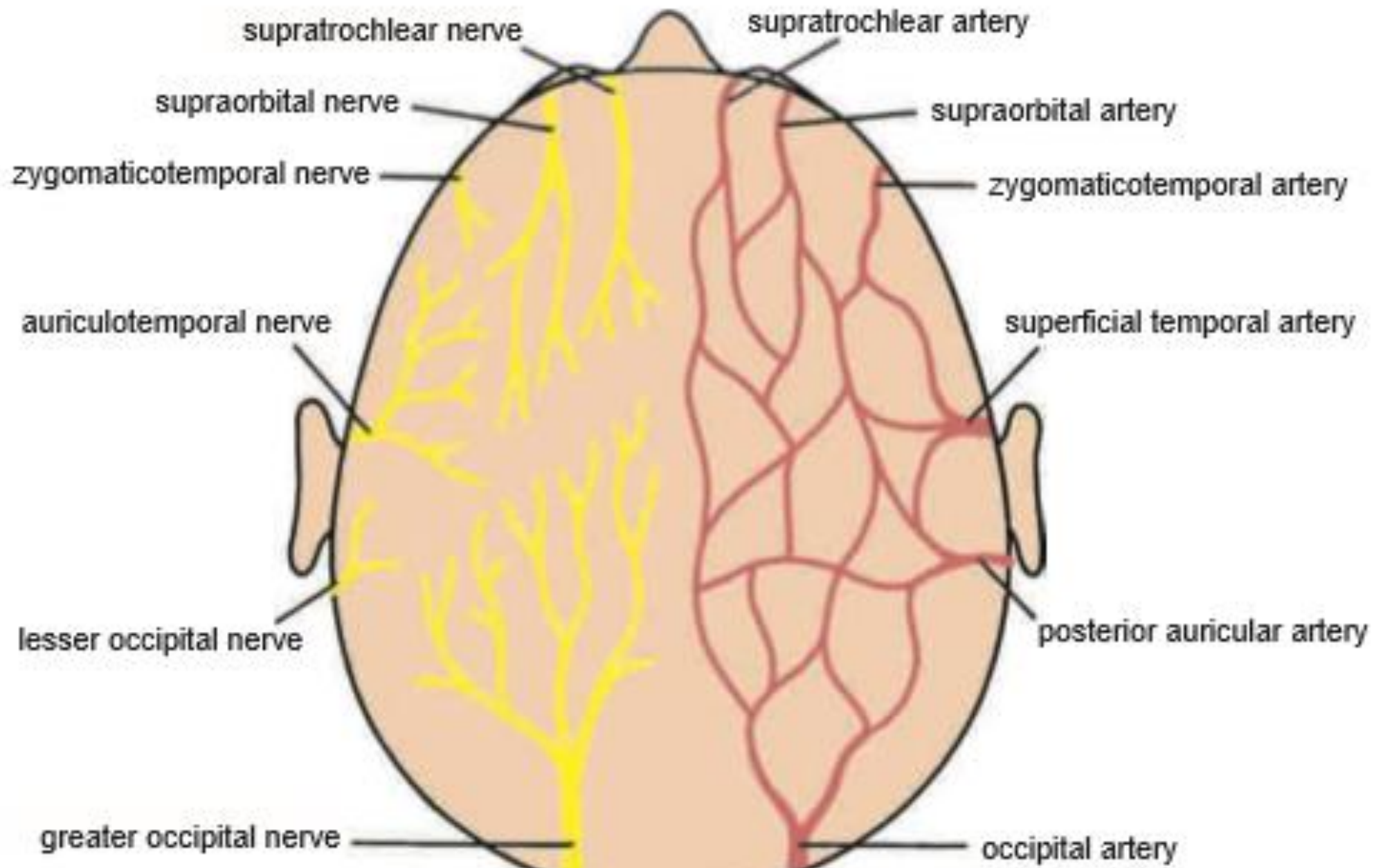


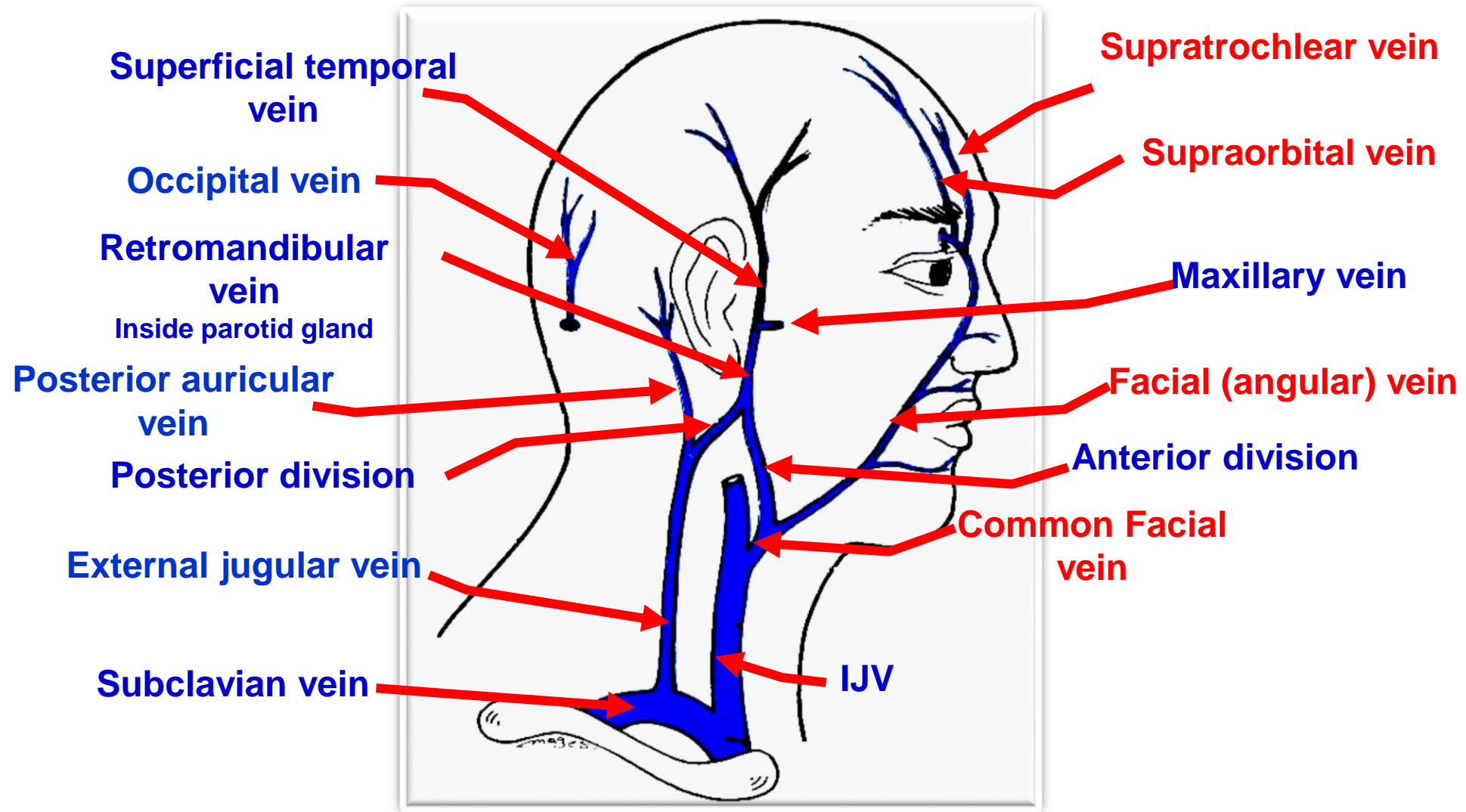
DANGEROUS AREA OF SCALP

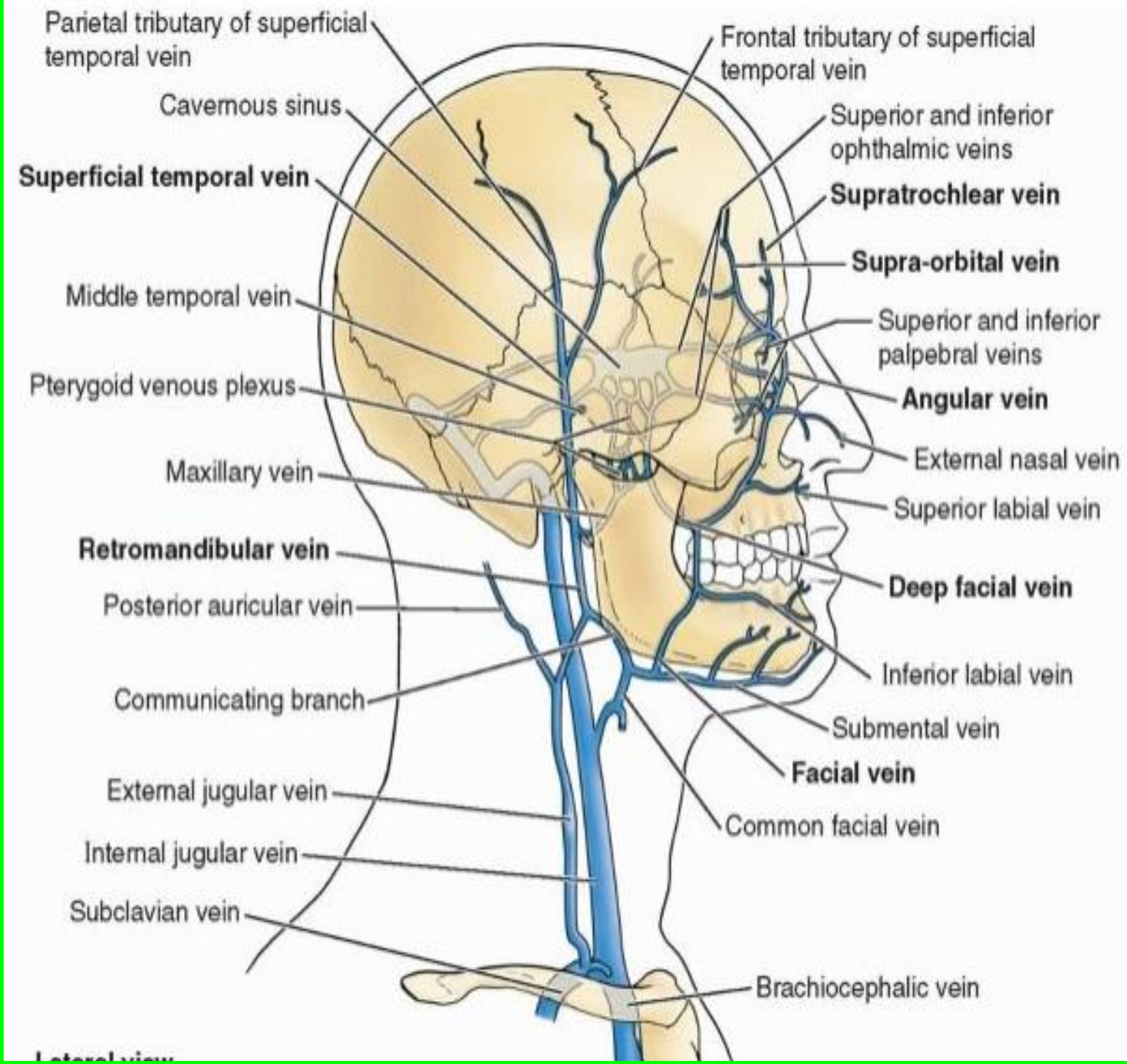
- **The 4th layer of scalp (loose areolar tissue)**
- **Infection in the subaponeurotic space with pus collection readily spread to intracranial sinuses through emissary veins (valveless)**









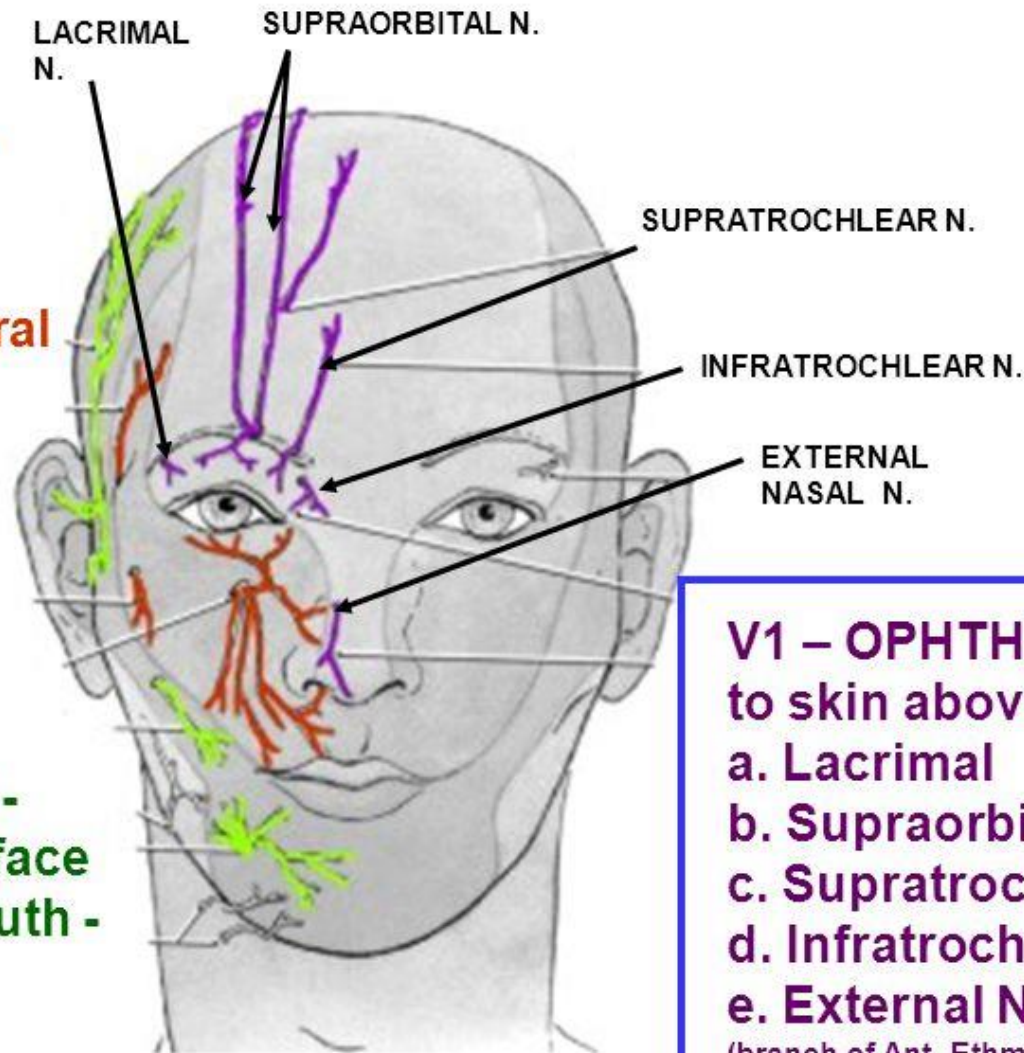


Lateral view

TRIGEMINAL – SENSORY BRANCHES TO FACE

V2 – MAXILLARY -
to skin of cheek
below orbit -
Zygomaticotemporal
Zygomaticofacial
Infraorbital

V3- MANDIBULAR -
to skin of jaw and face
below angle of mouth -
Auriculotemporal
Buccal
Mental



V1 – OPHTHALMIC -
to skin above orbit -
a. Lacrimal
b. Supraorbital
c. Supratrochlear
d. Infratrochlear
e. External Nasal Nerve
(branch of Ant. Ethmoidal N.)

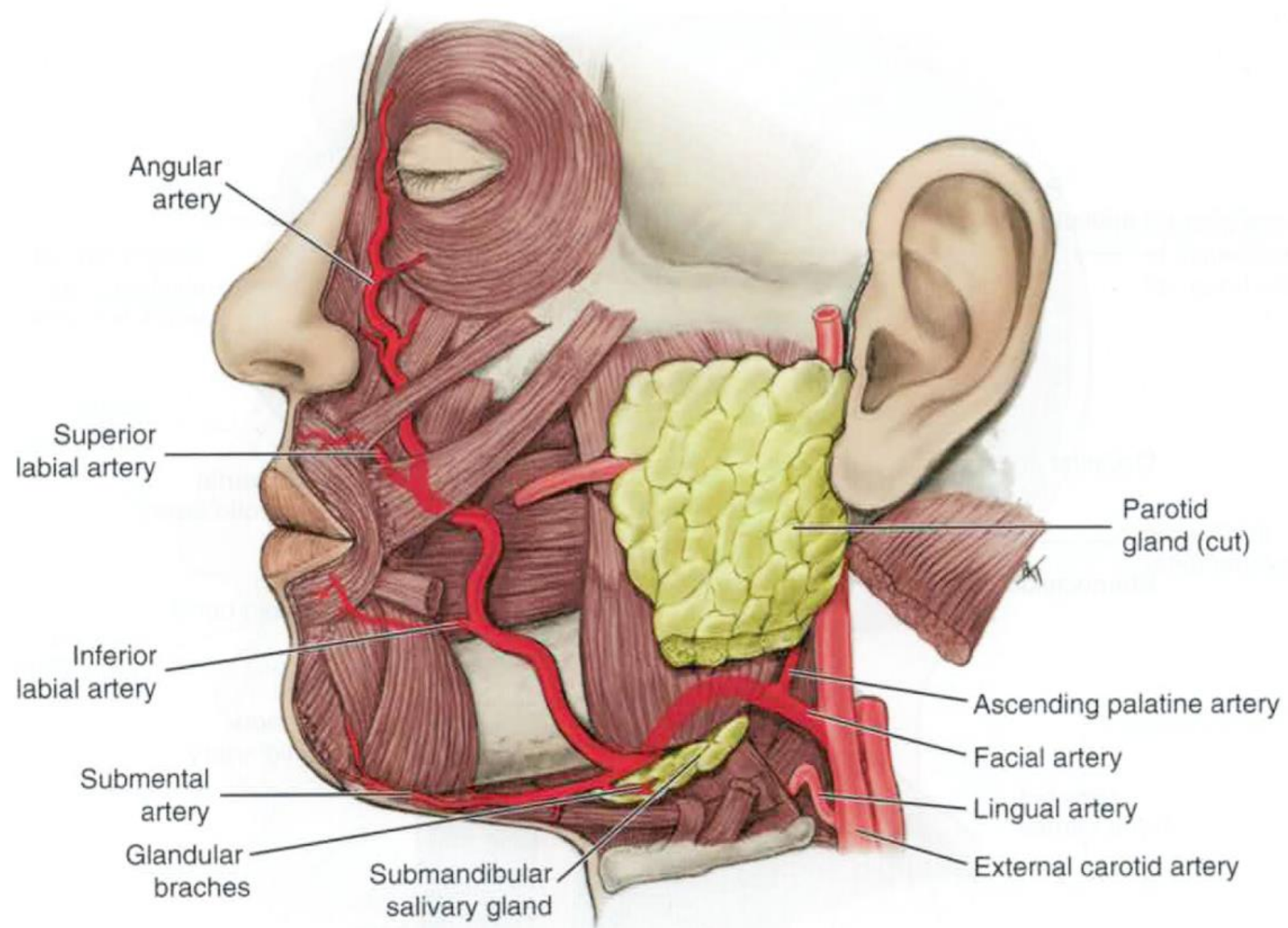
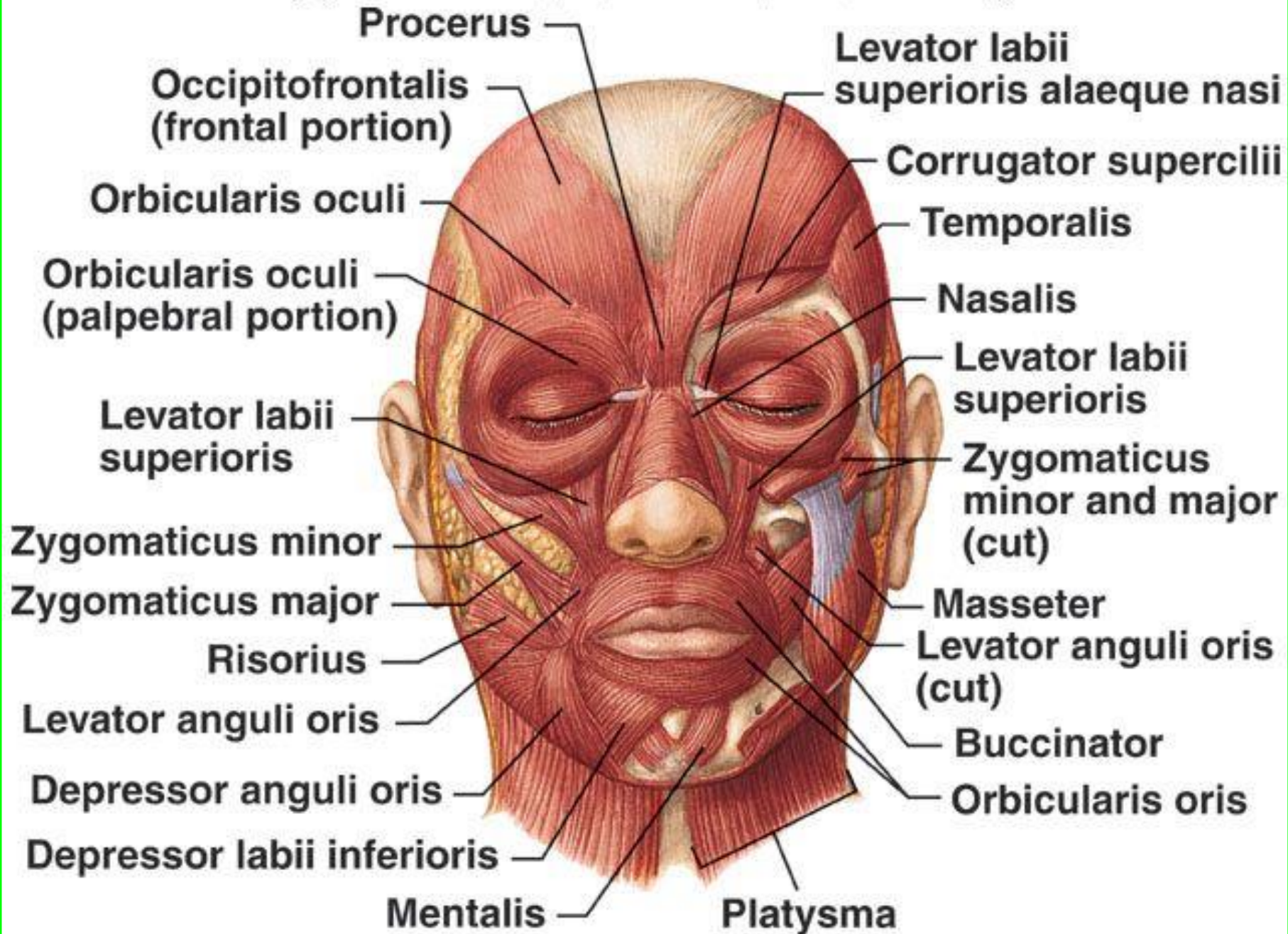
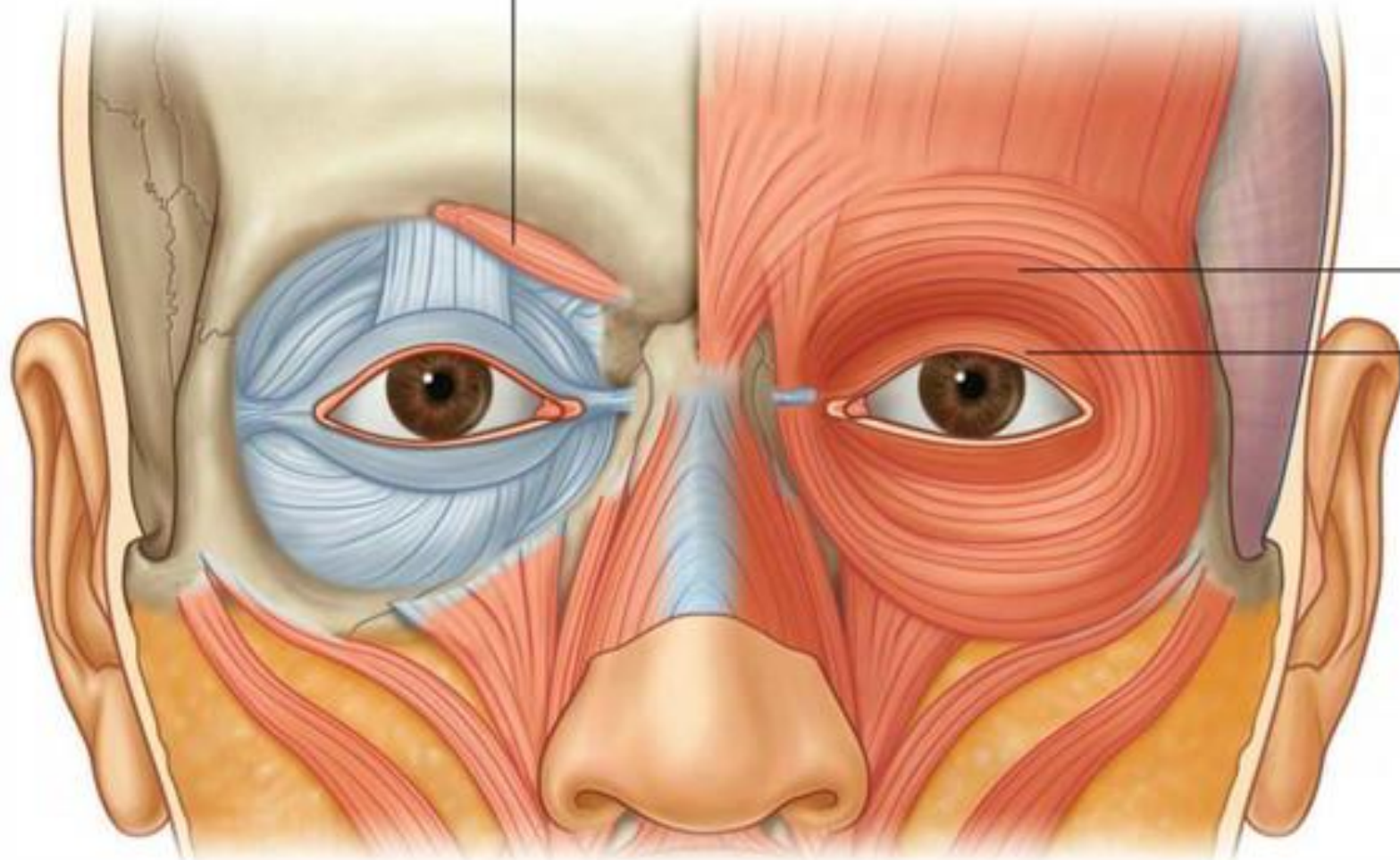


FIGURE 6-6 Pathway of the facial artery.



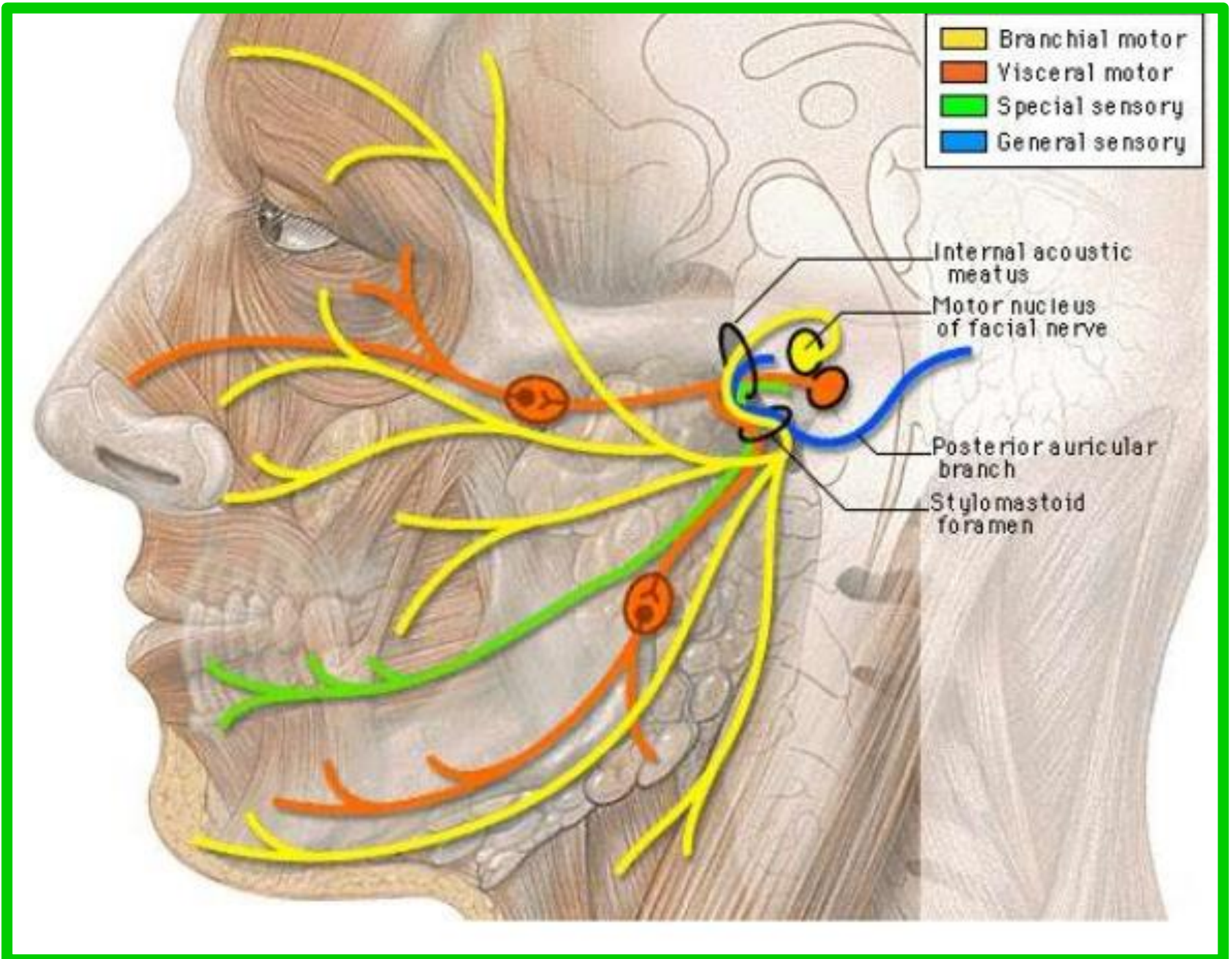
Corrugator supercilii



Orbital

Palpebral

Orbicularis oculi



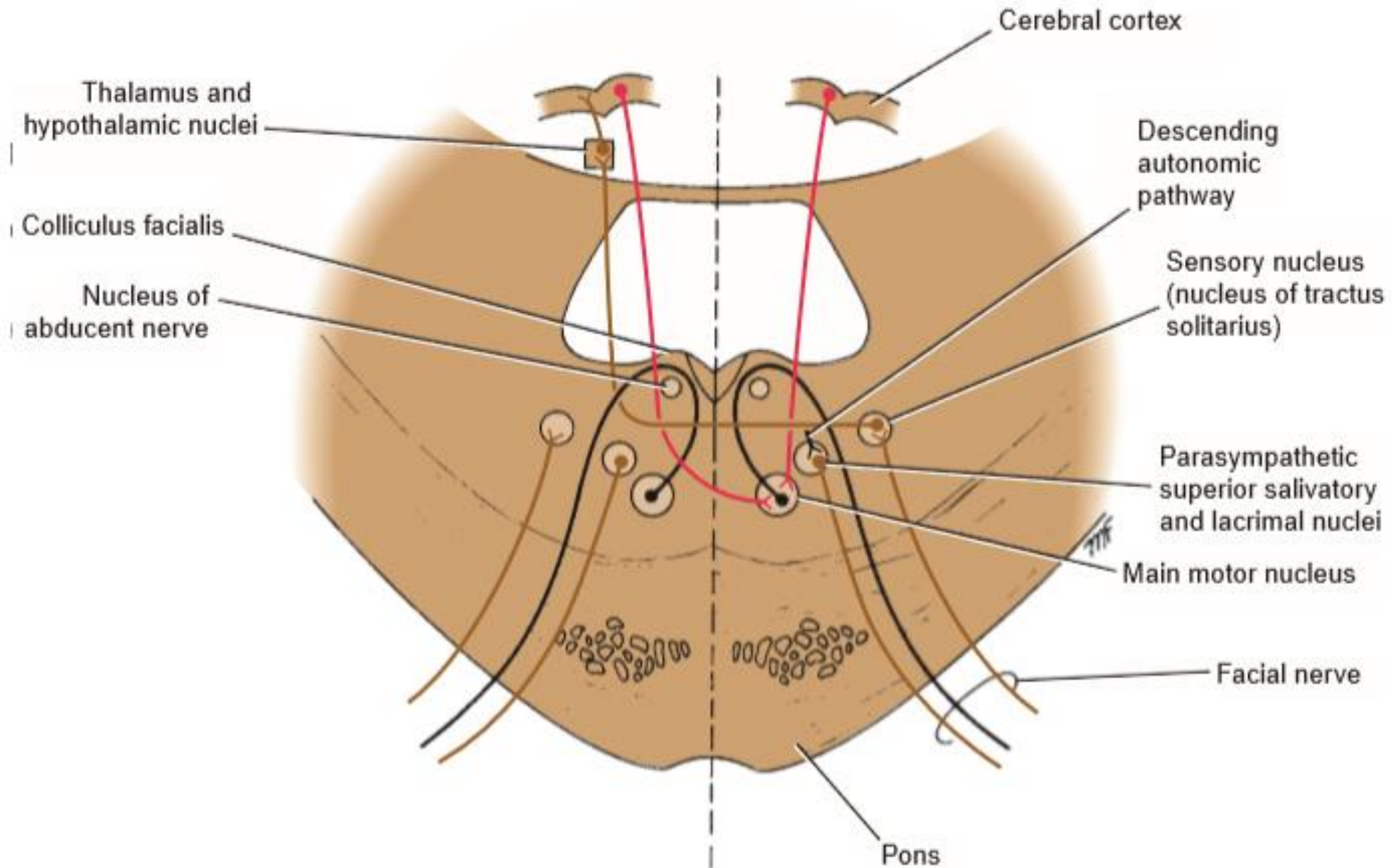
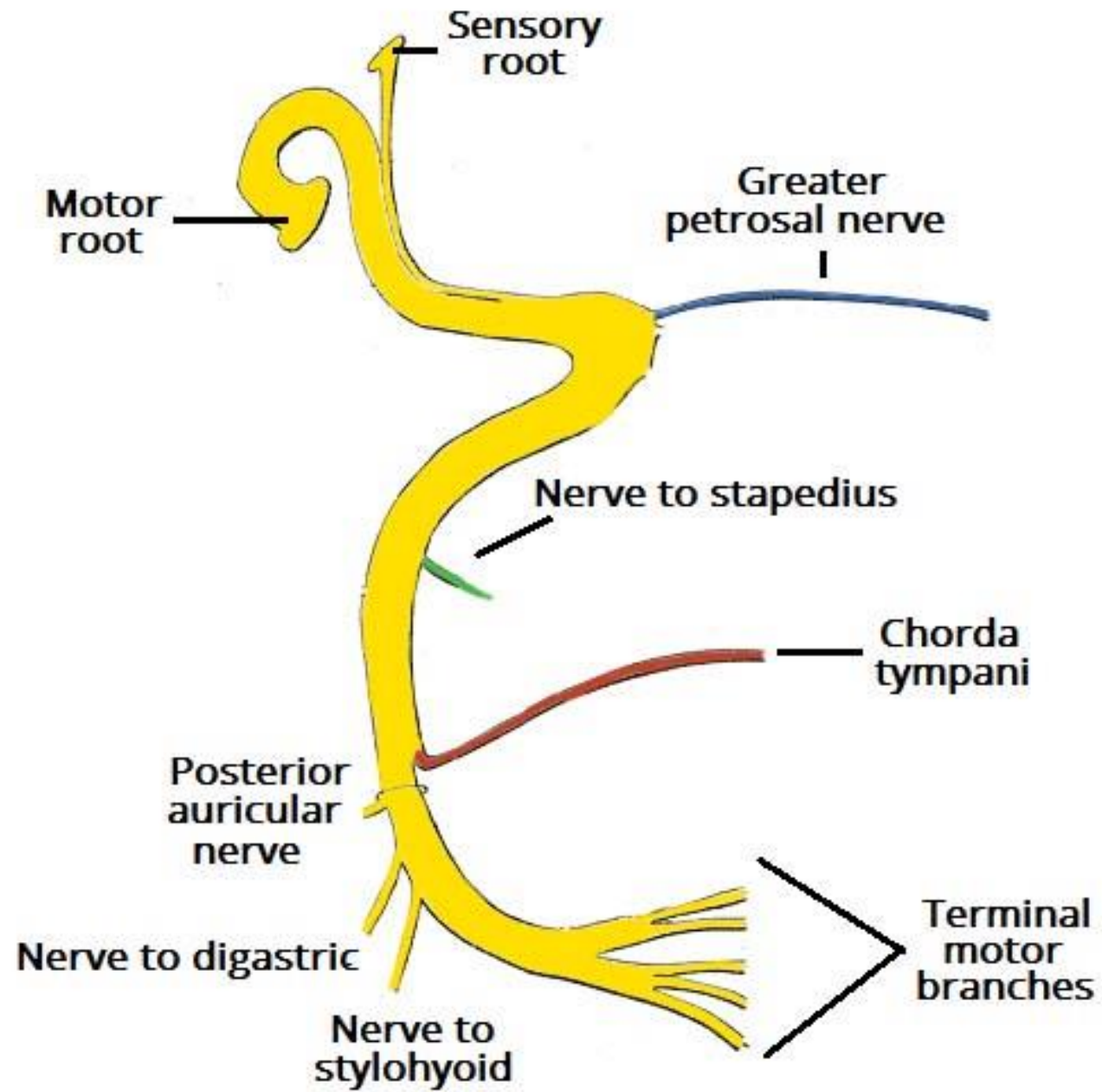


Figure 11-11 Facial nerve nuclei and their central connections.



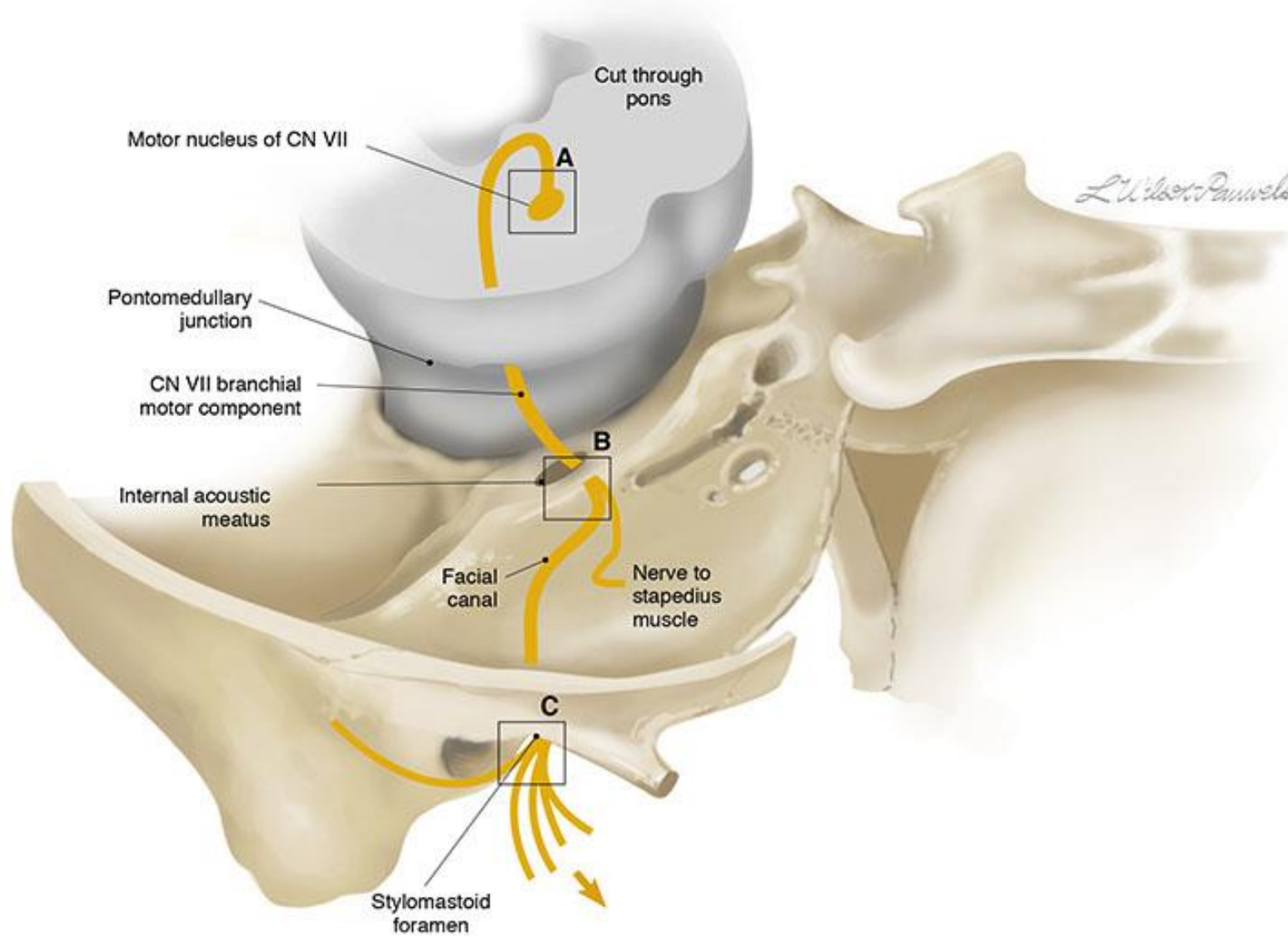
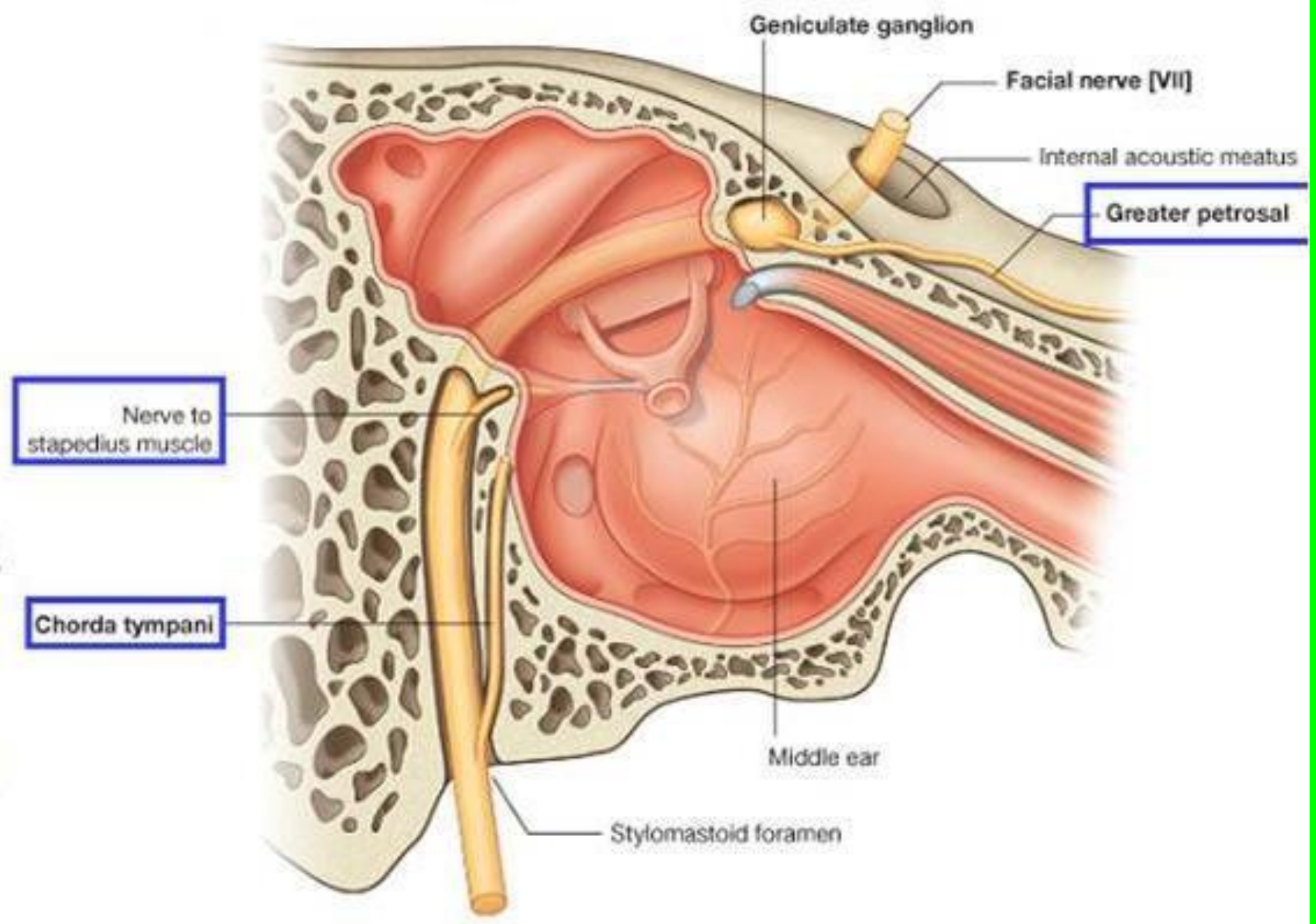
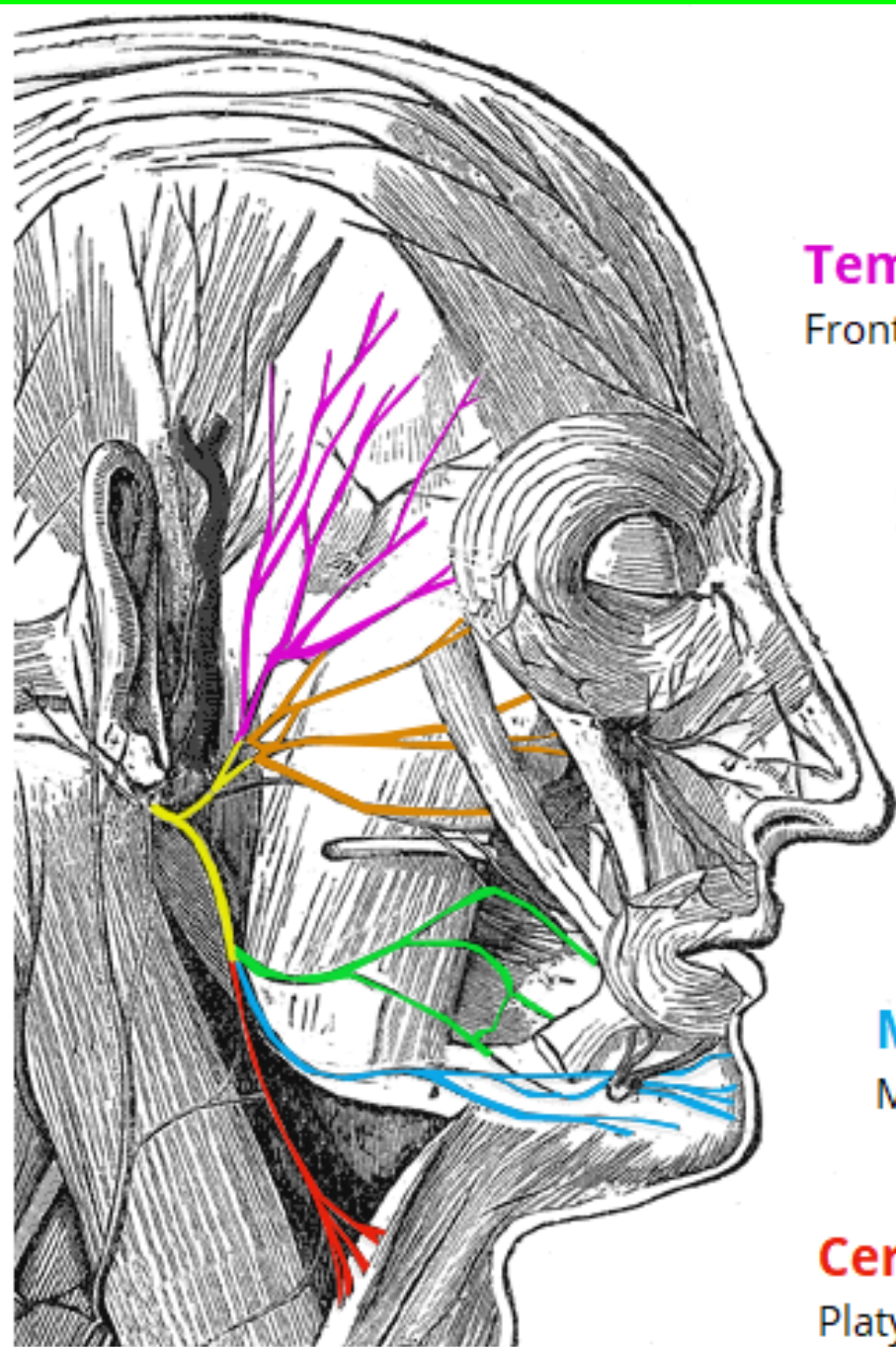


Figure VII-13 Lower Motor Neuron Lesions (LMNLs) affecting the branchial motor axons in **A**, pons, **B**, internal acoustic meatus, and **C**, styloid mastoid foramen (brainstem is elevated)





Temporal branches

Frontalis, orbicularis oculi, corrugator supercilii

Zygomatic branches

Orbicularis oculi

Buccal branches

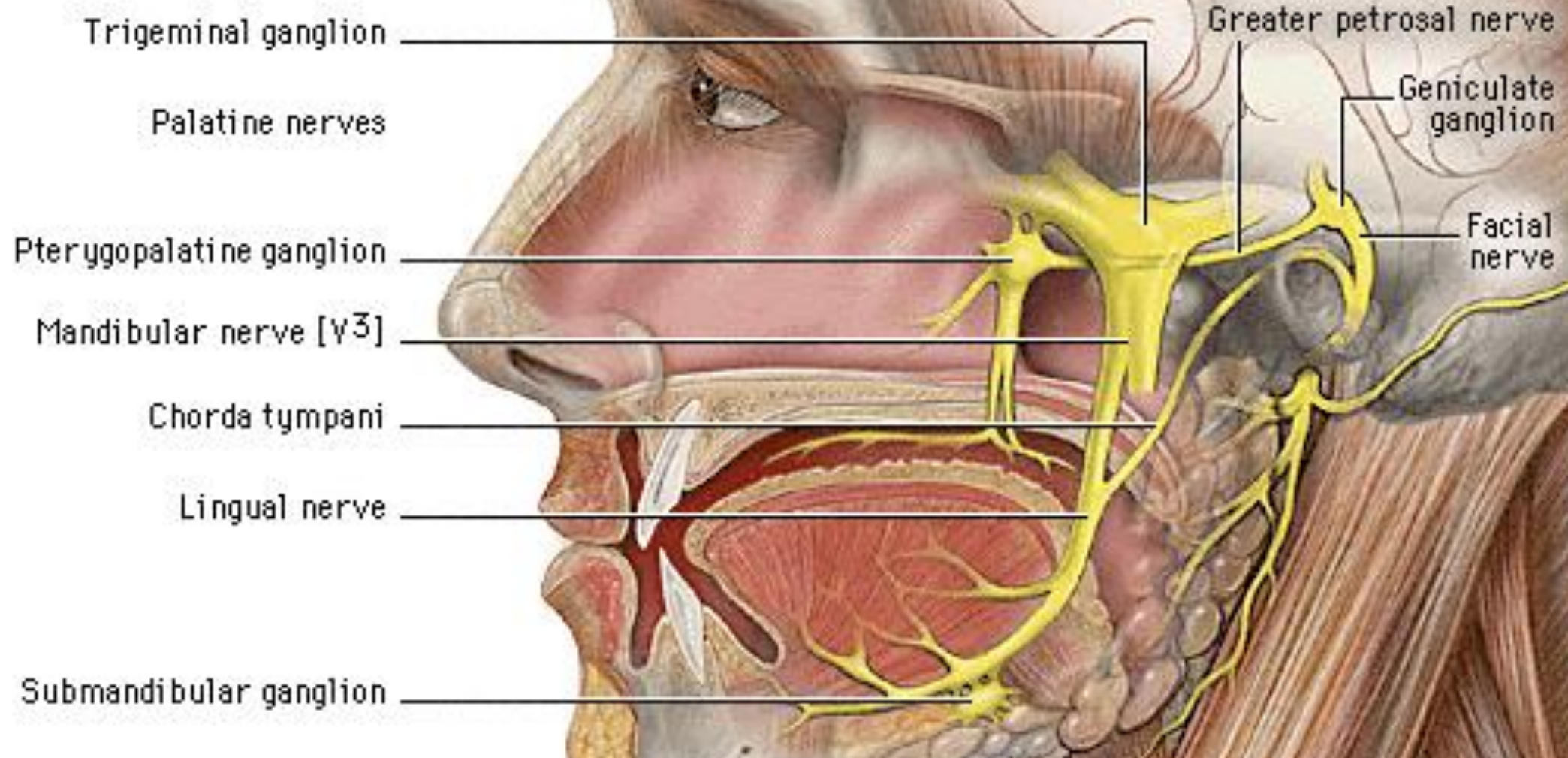
Orbicularis oris, buccinator, zygomaticus

Marginal mandibular branches

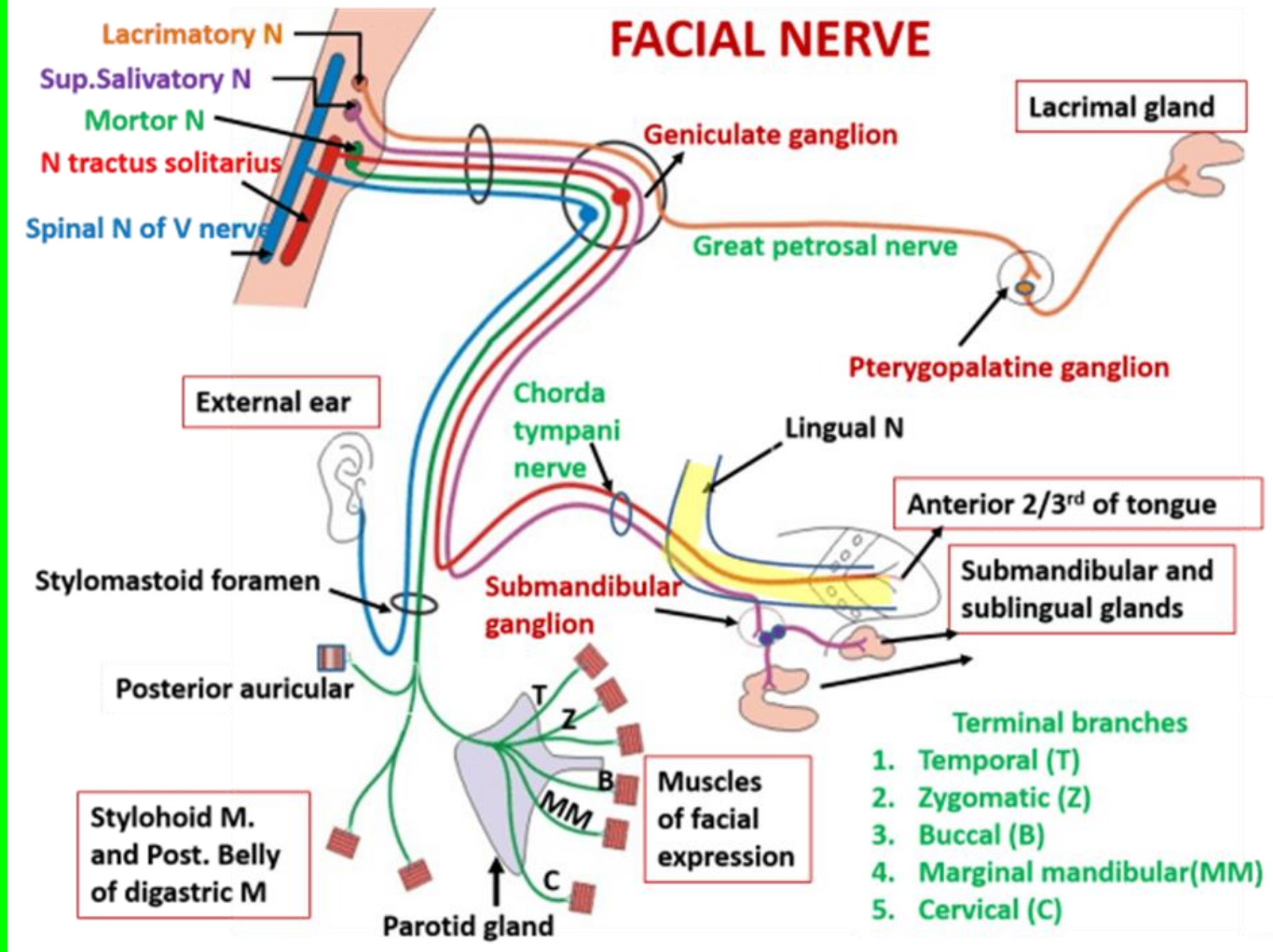
Mentalis, depressor labii inferioris, depressor anguli oris

Cervical branches

Platysma



FACIAL NERVE



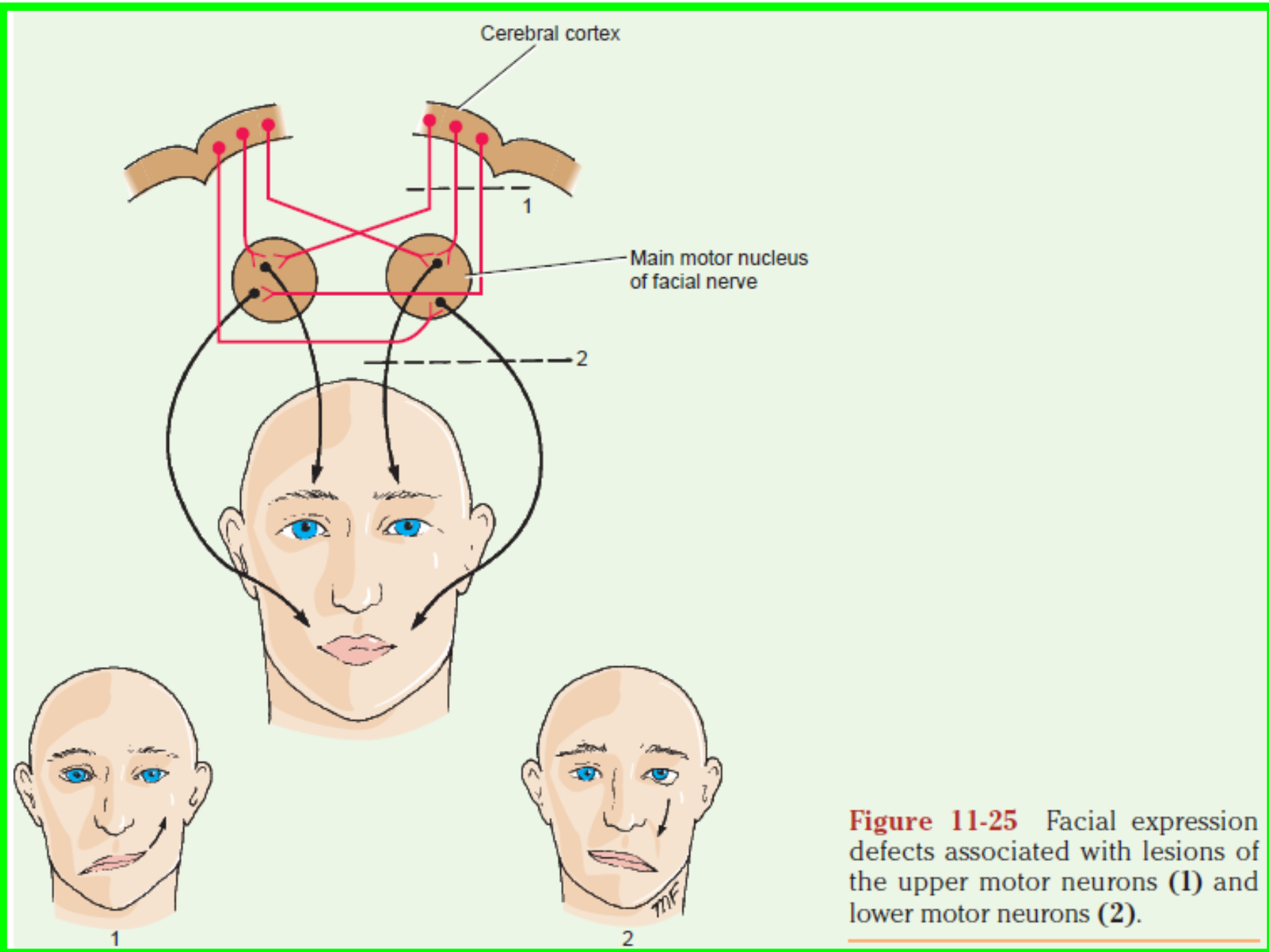
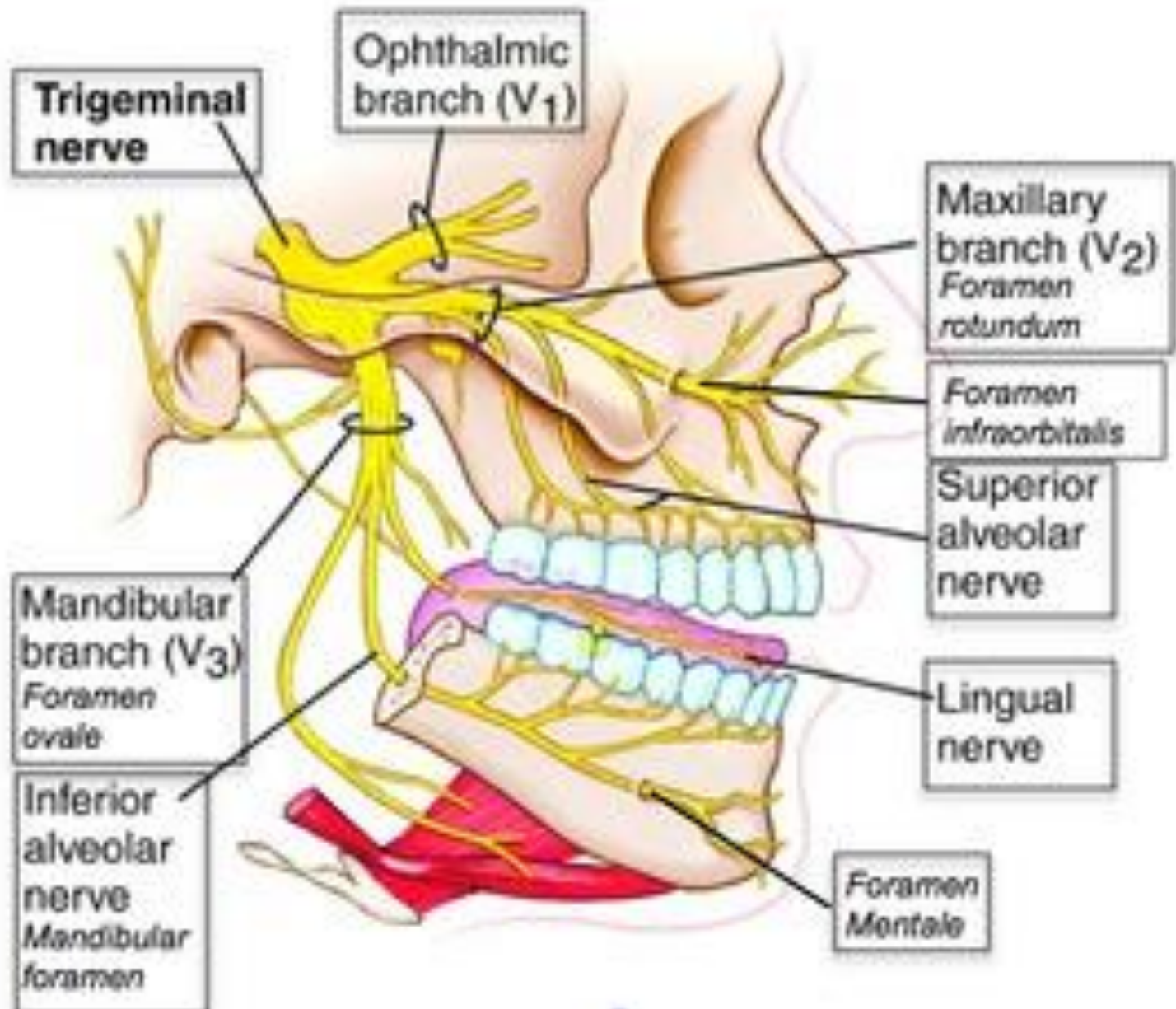
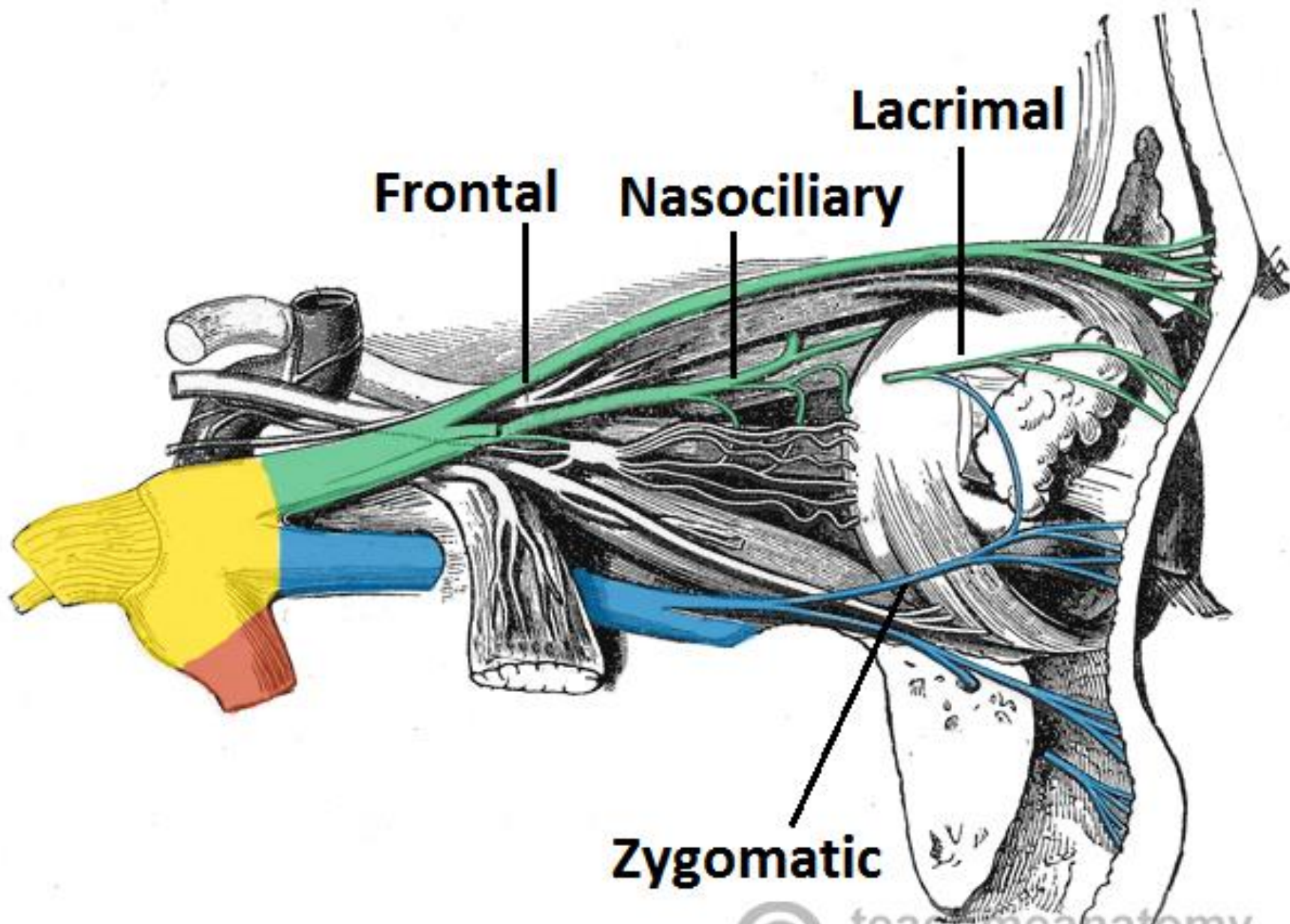


Figure 11-25 Facial expression defects associated with lesions of the upper motor neurons (**1**) and lower motor neurons (**2**).





Frontal

Nasociliary

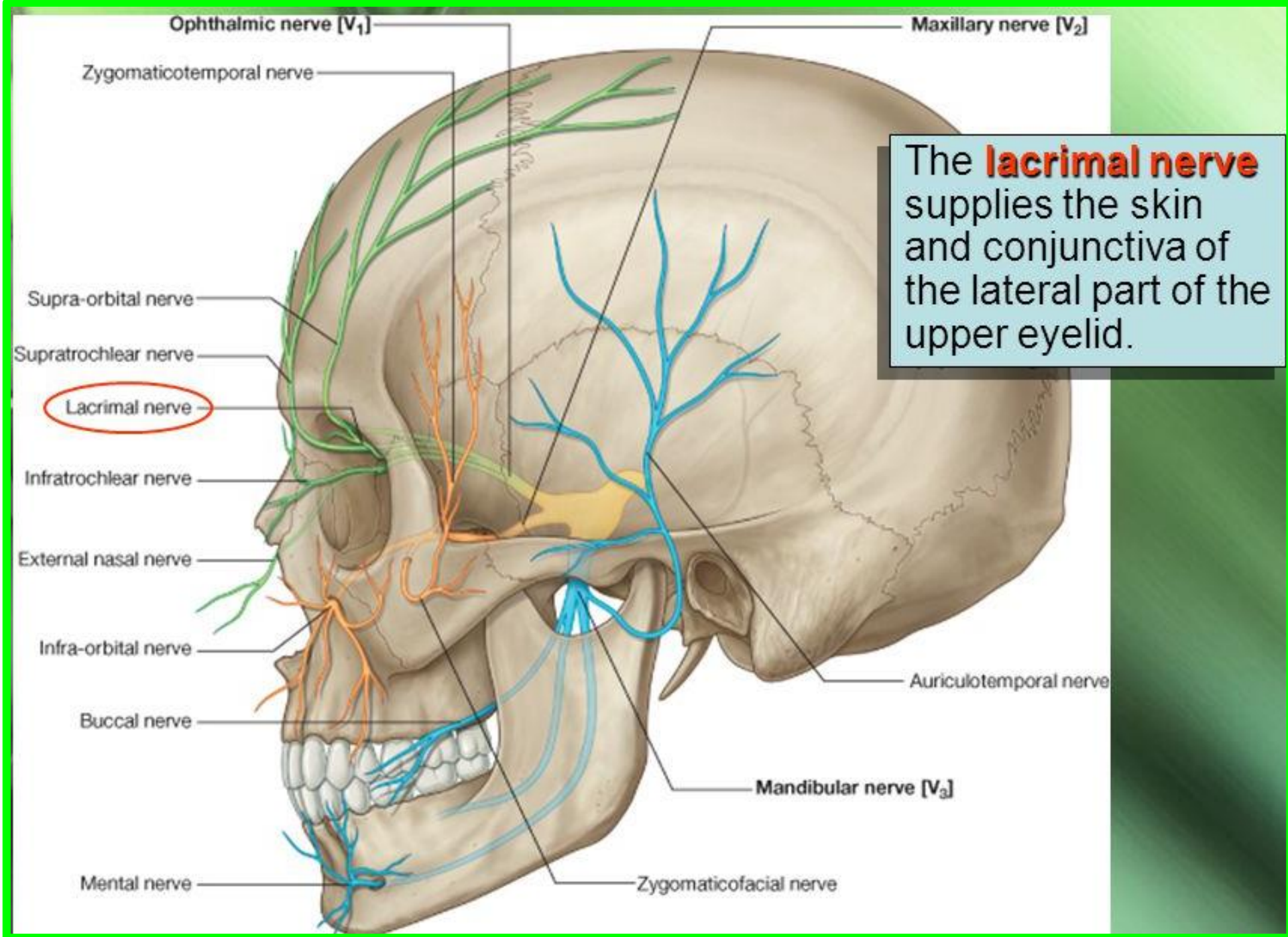
Lacrimal

Zygomatic

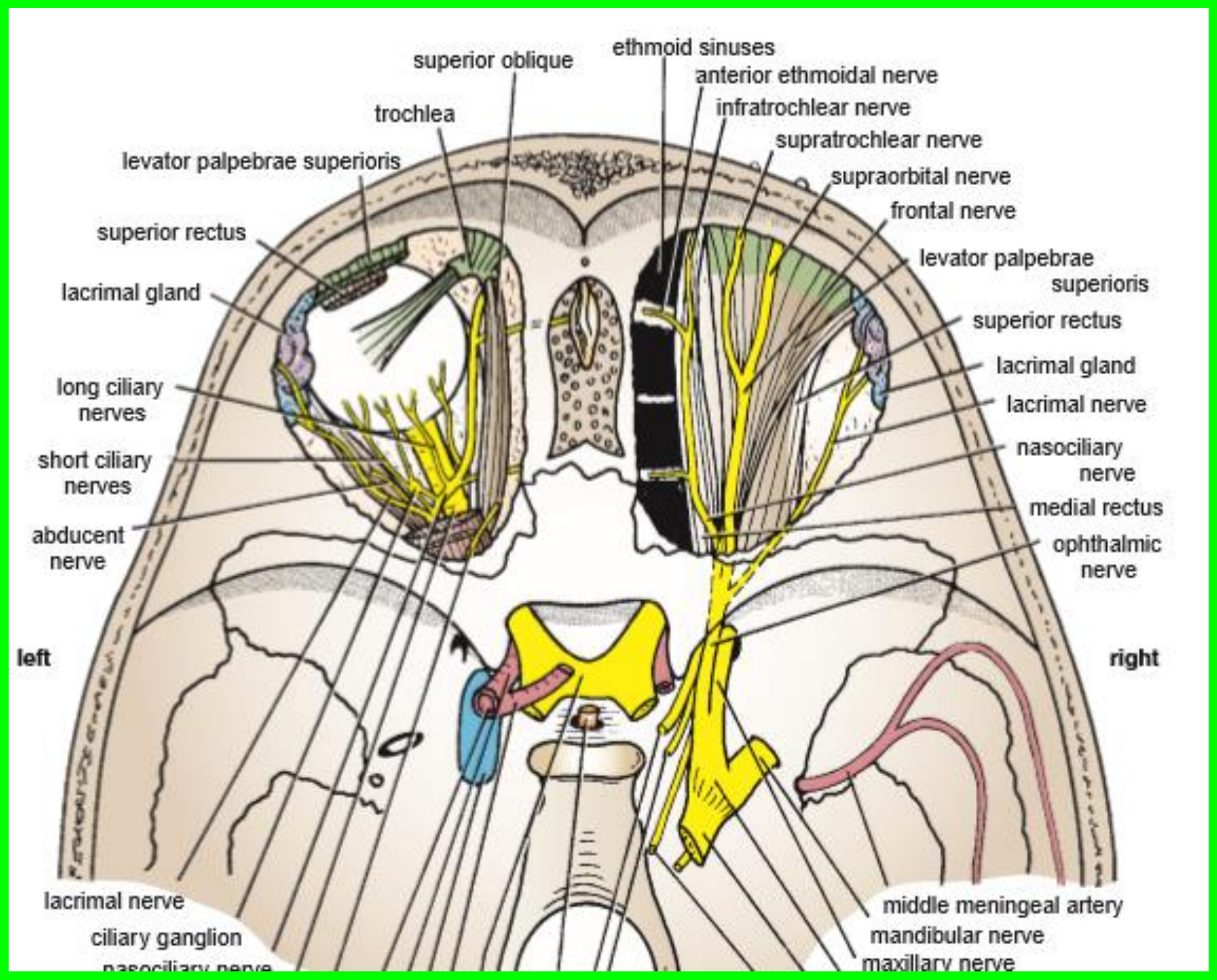


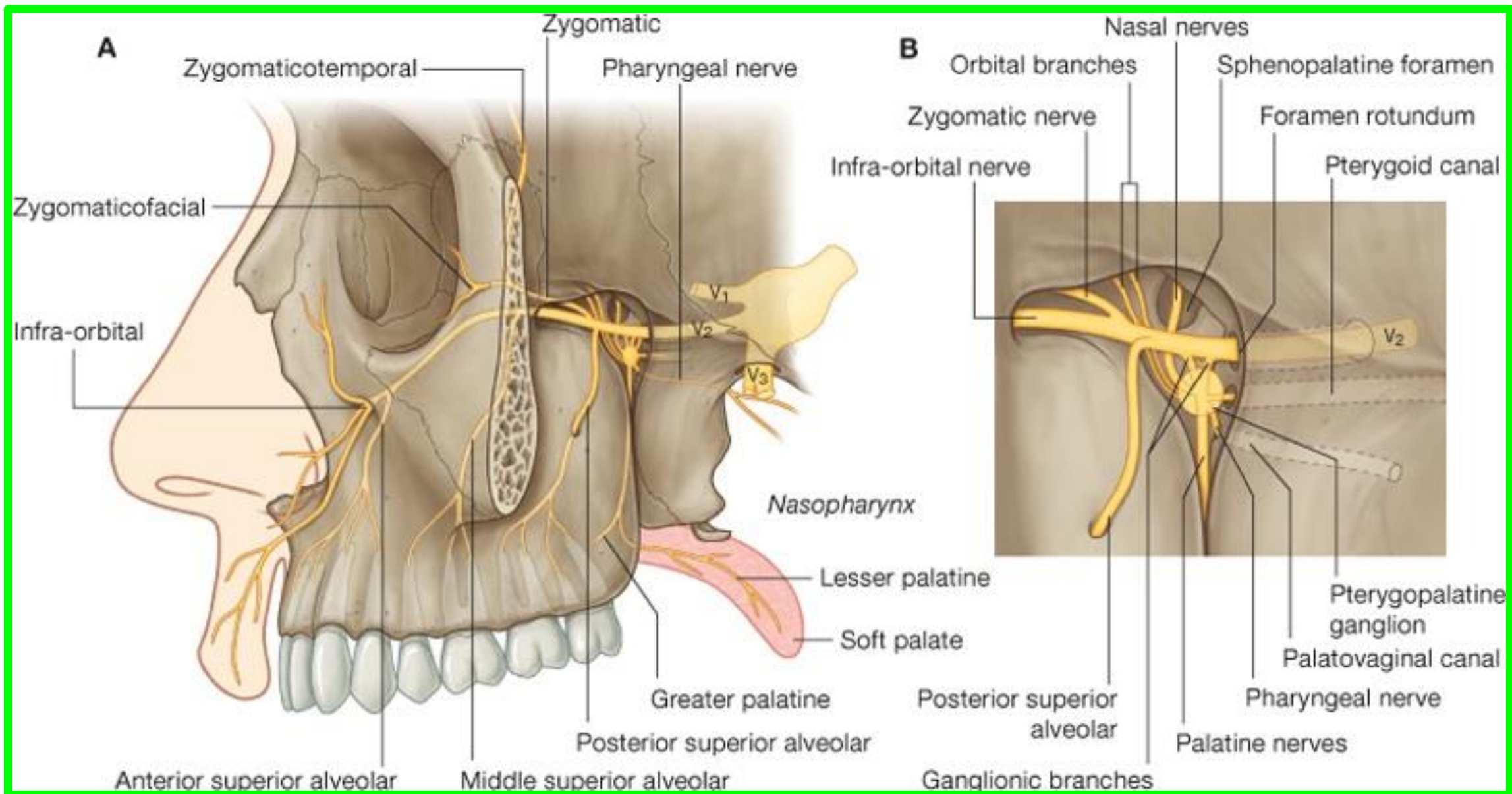
teachmeanatomy

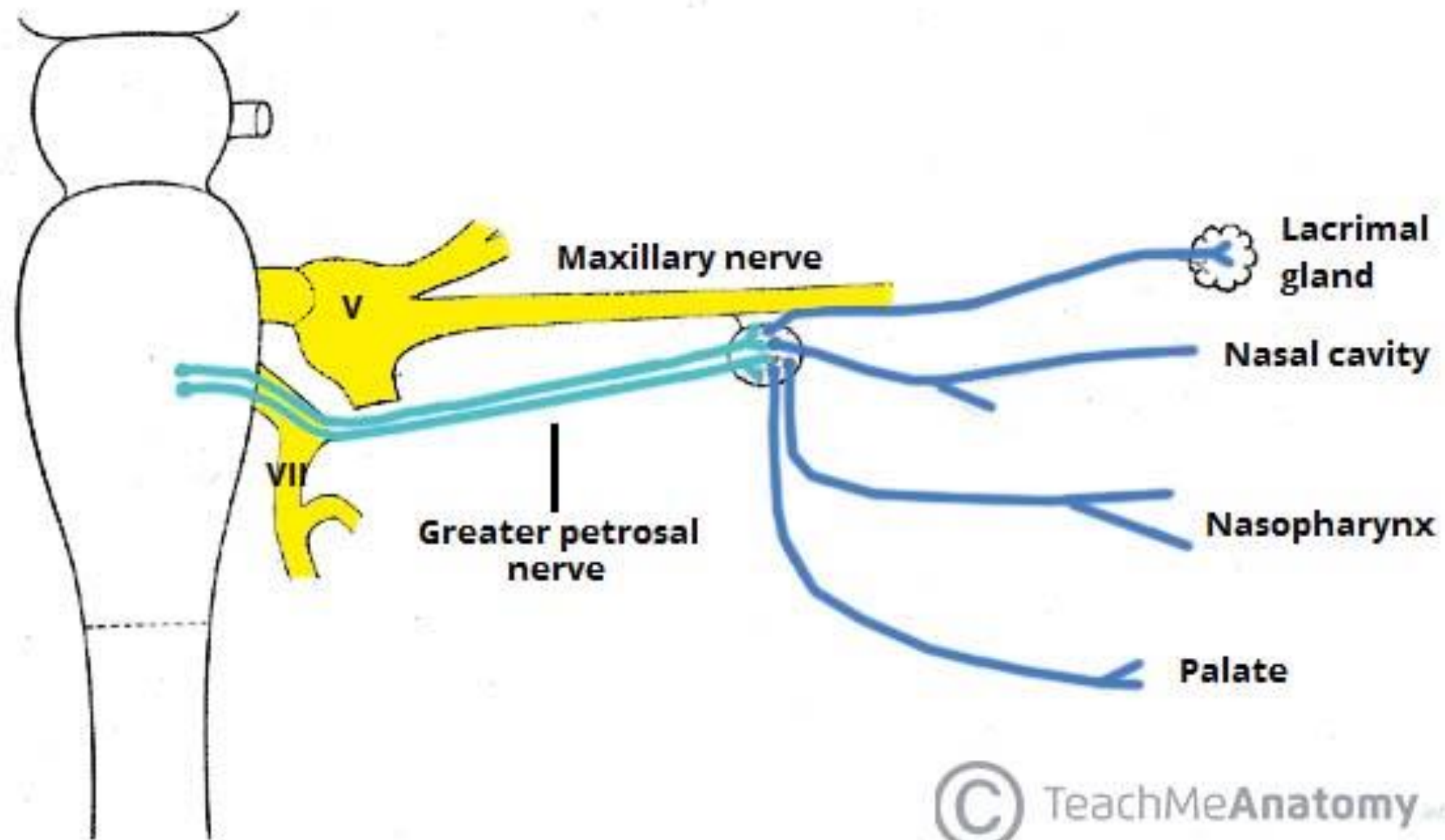
The #1 Applied Human Anatomy Site on the Web.



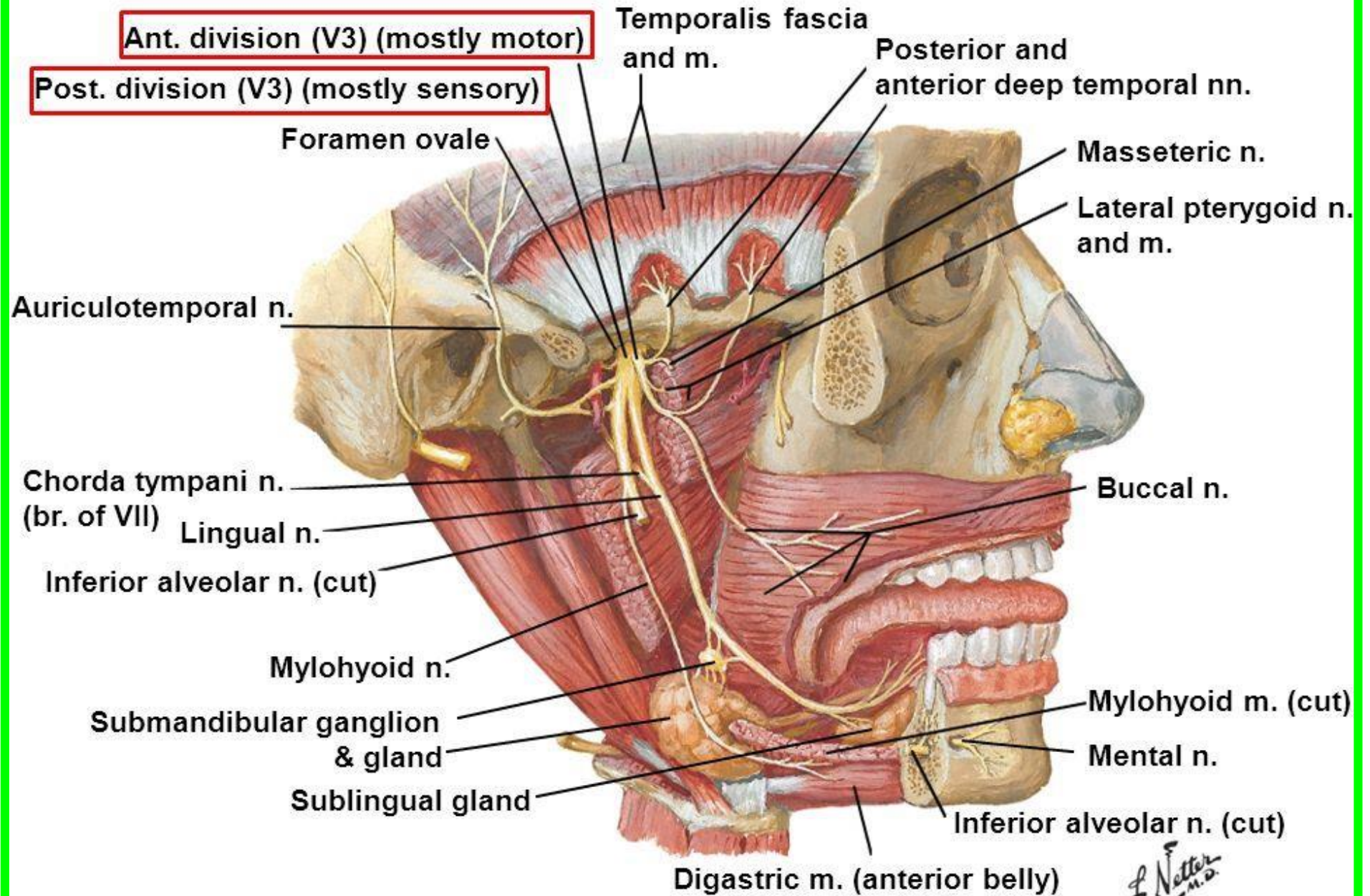
The **lacrimal nerve** supplies the skin and conjunctiva of the lateral part of the upper eyelid.

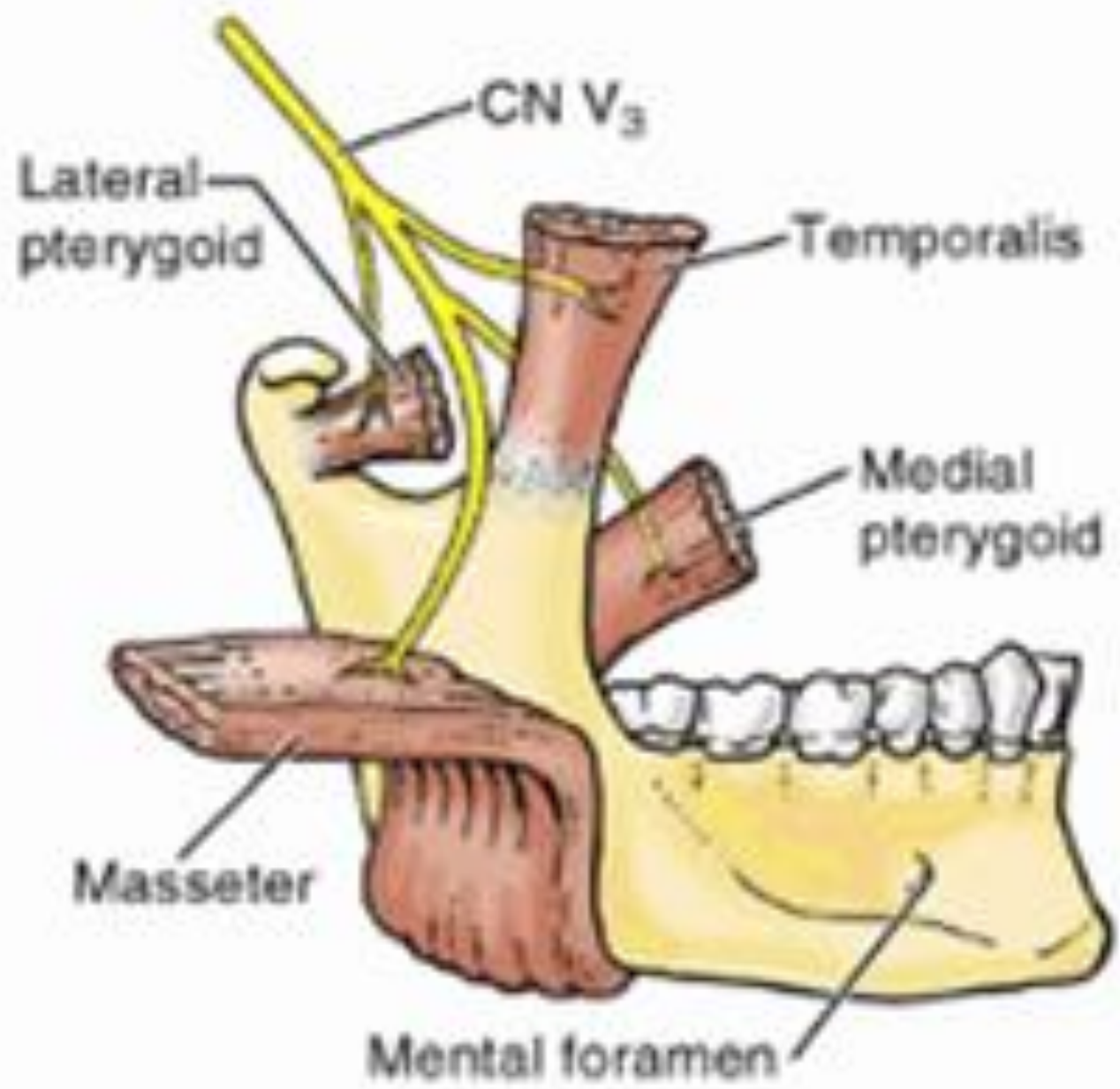






MANDIBULAR NERVE (V3)





Mandibular nerve (V3)

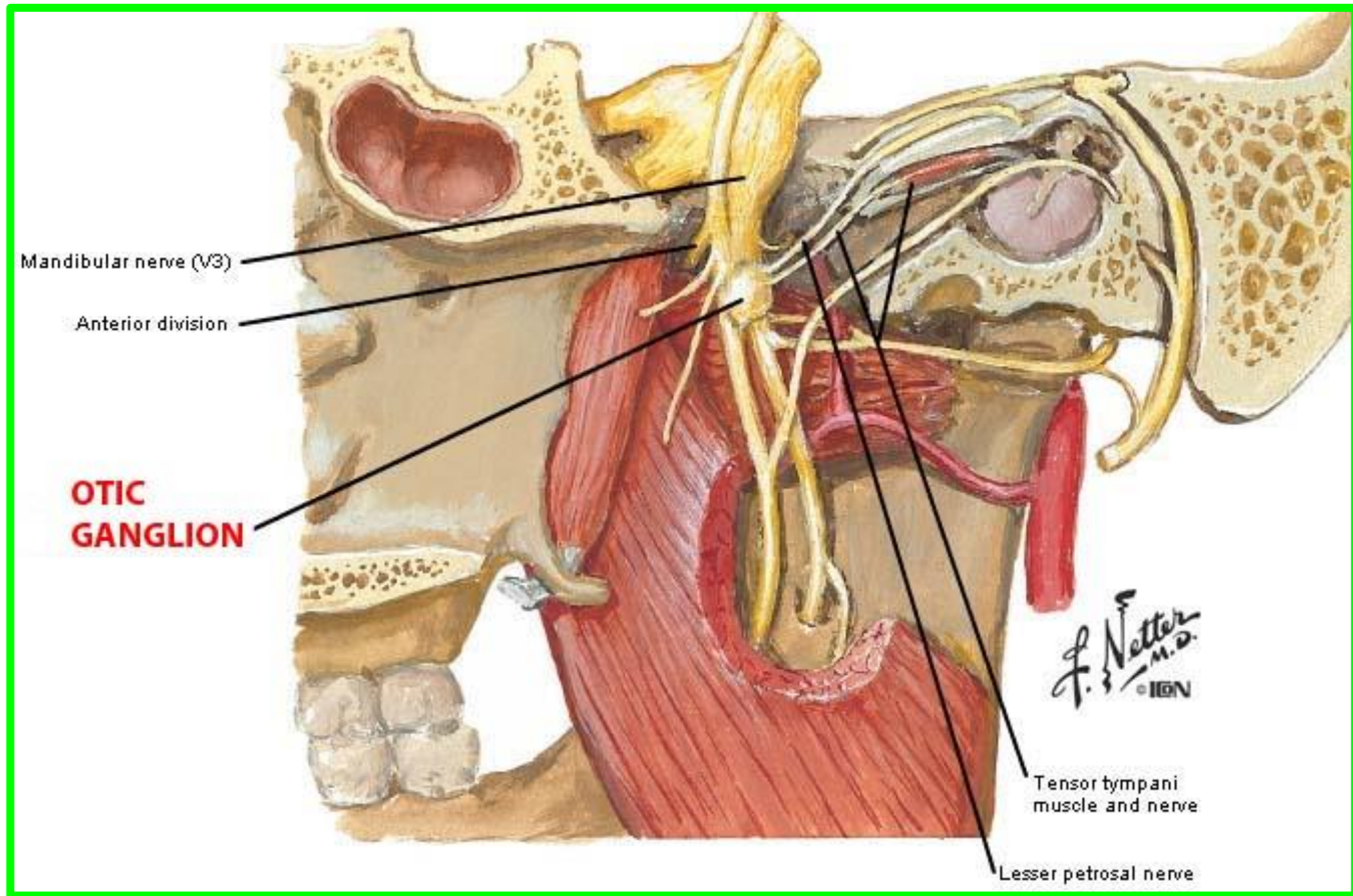
Anterior division

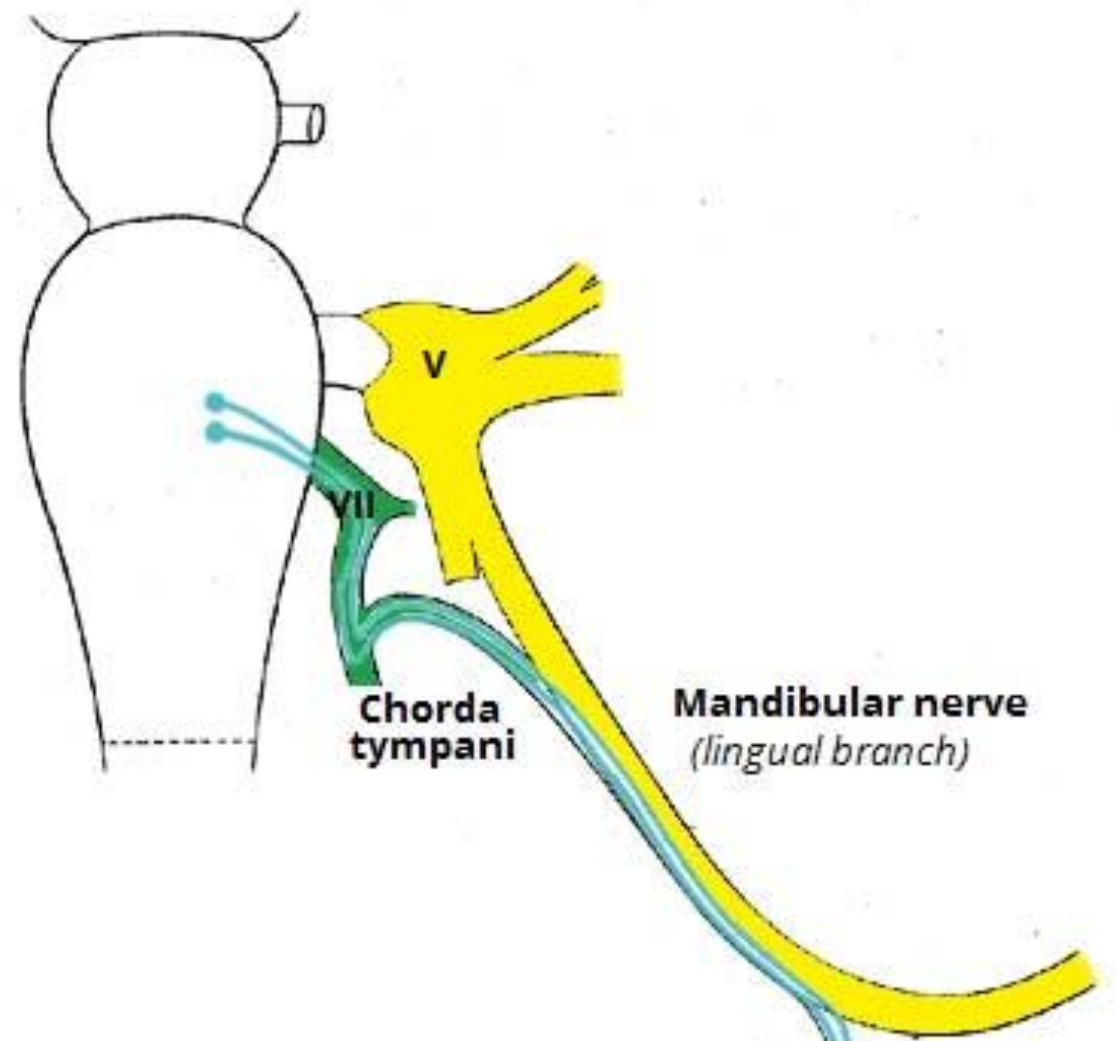
**OTIC
GANGLION**

Tensor tympani
muscle and nerve

Lesser petrosal nerve

F. Netter
M.D.
© IGV





**Chorda
tympani**

**Mandibular nerve
(lingual branch)**

**Sublingual
gland**

**Submandibular
gland**