

وسهلا

أهلا

يُمنع أخذ السلايدات بدون  
إذن المحرر واي اجراء  
يخالف ذلك يقع تحت  
طائلة المسؤولية القانونية



# الأستاذ الدكتور يوسف حسين

أستاذ التشريح وعلم الأجنة - كلية الطب - جامعة الزقازيق - مصر

رئيس قسم التشريح و الأنسجة و الأجنة - كلية الطب - جامعة مؤتة - الأردن

دكتورة من جامعة كولونيا المانيا

جروب الفيس د. يوسف حسين (استاذ التشريح)

Prof. Dr. Youssef Hussein Anatomy - YouTube

اليوتيوب د. يوسف حسين

<https://www.youtube.com/@ProfDrYoussefHusseinAnatomy/playlists>

<https://www.youtube.com/@ProfDrYoussefHusseinAnatomy/playlists>

# Submandibular gland

[Prof. Dr. Youssef Hussein Anatomy - YouTube](#)

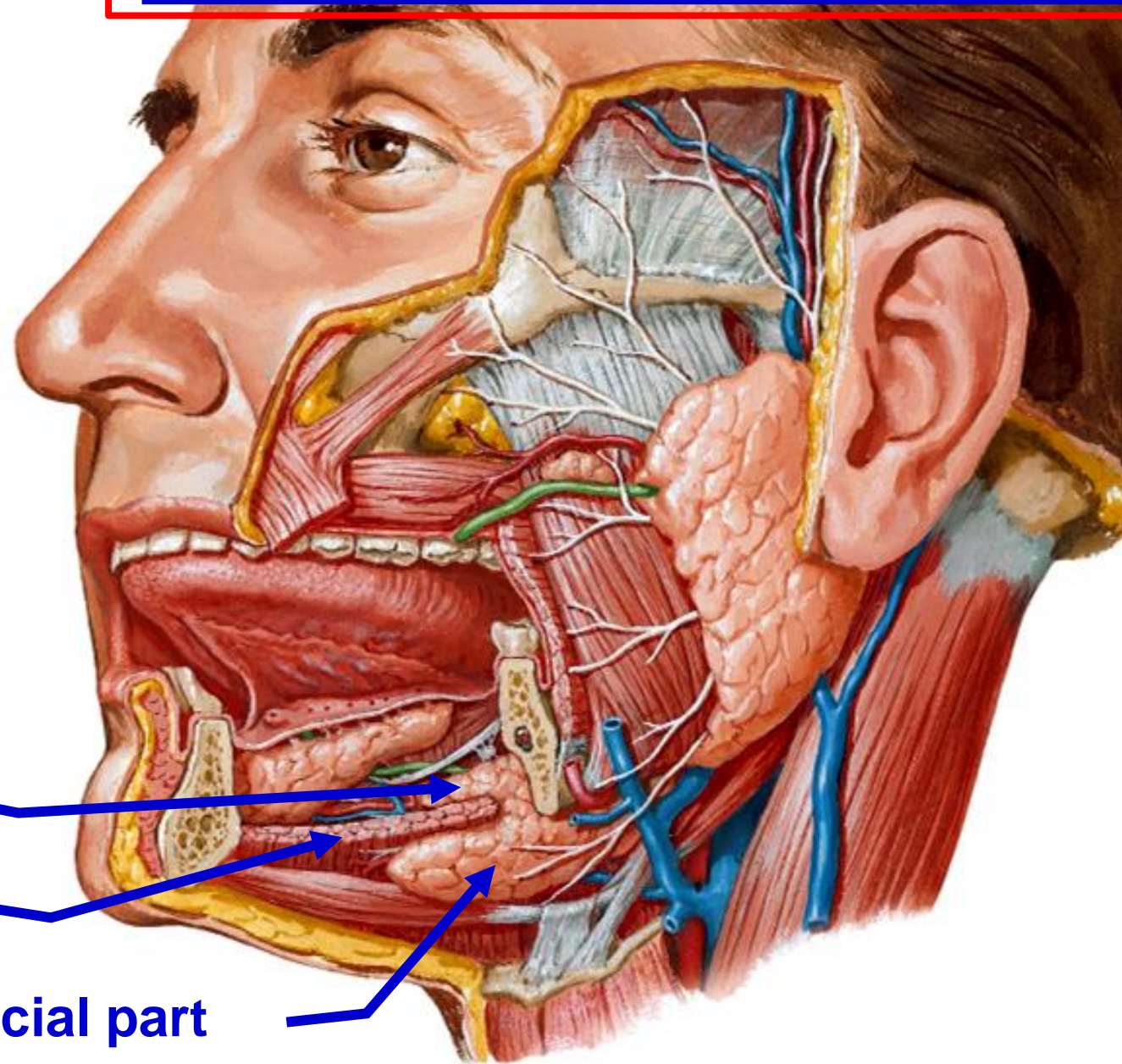
- **Type;** It is a mixed **Salivary** gland (mucous and serous).
- **Parts:**
  - 1) Large superficial part.
  - 2) Small deep part.

- The two parts are continues with each other at the posterior border of the mylohyoid muscle.

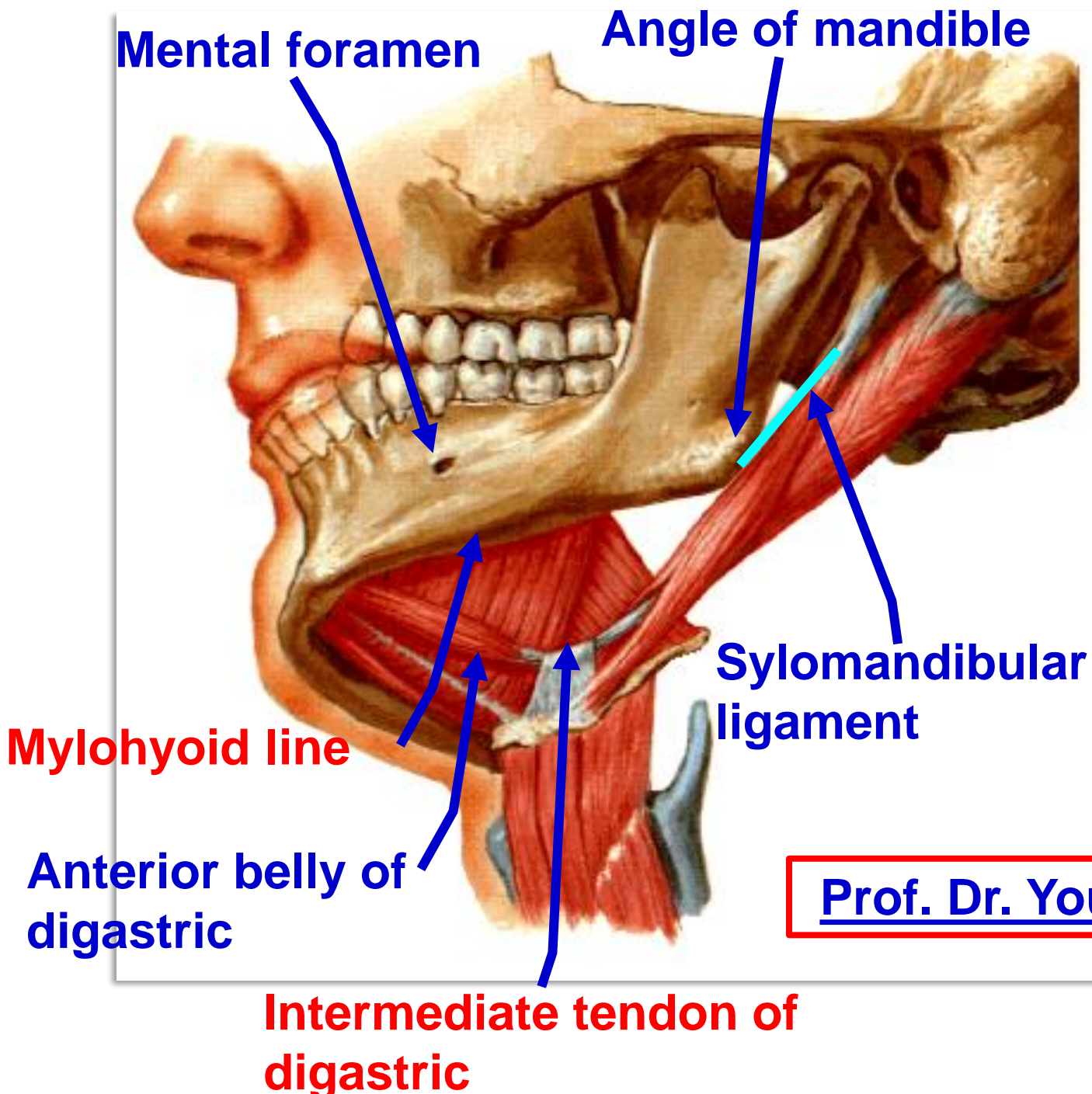
**Deep part**

**Mylohyoid muscle**

**Superficial part**

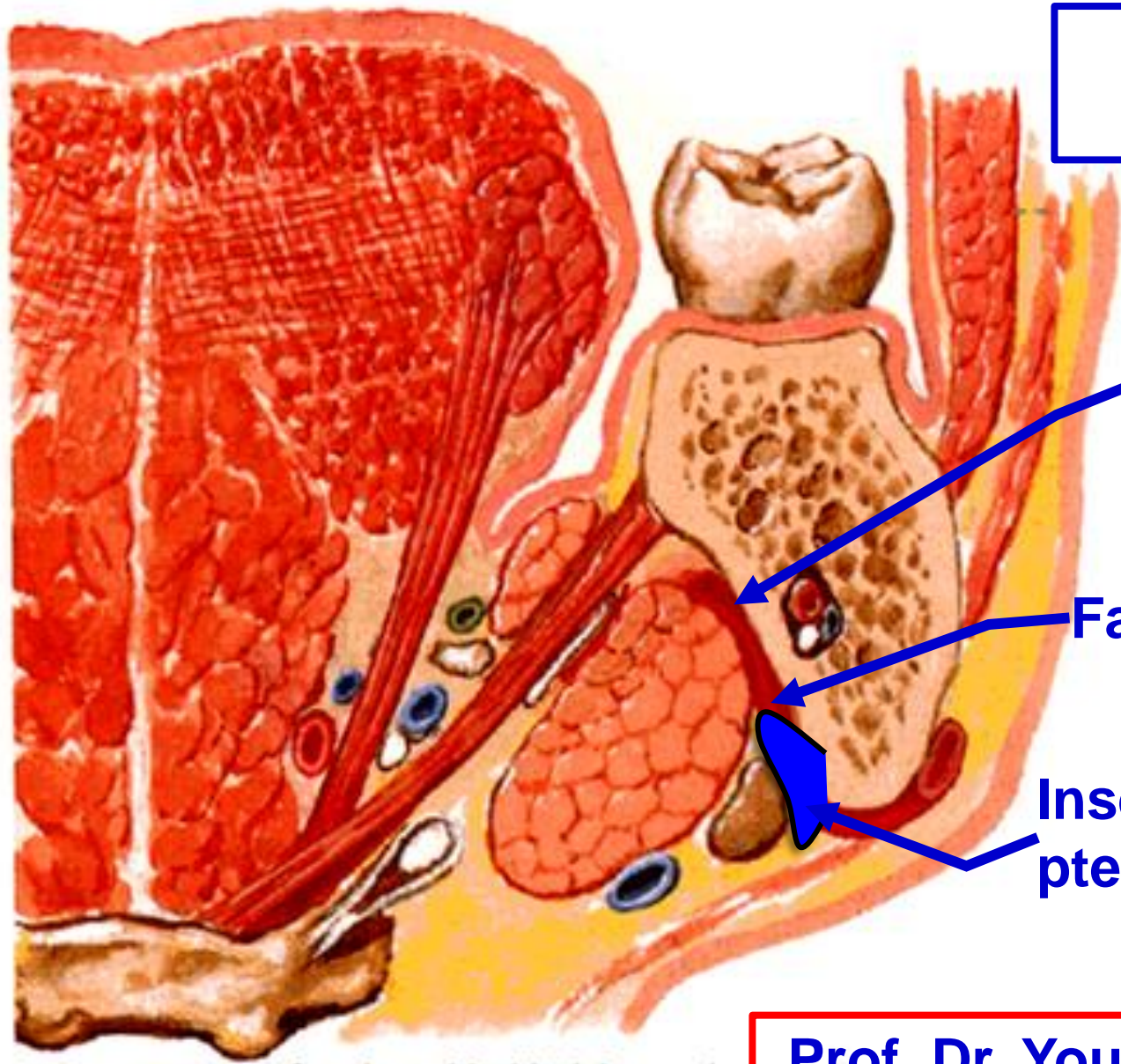






- **Extension of the superficial part :**
  - It lies in the submandibular (digastric) triangle extending:
    1. **Anteriorly:** to the mental foramen, it overlaps the anterior belly of digastric muscle.
    2. **Posteriorly:** to the angle of mandible, it is separated from the parotid gland by the stylomandibular ligament.
    3. **Above:** mylohyoid line of mandible.
    4. **Below:** it overlaps the intermediate tendon of digastric.

[Prof. Dr. Youssef Hussein Anatomy - YouTube](#)



- Relations of the lateral surface of superficial part

- Shape: wedge shaped

Submandibular fossa of mandible

Facial artery

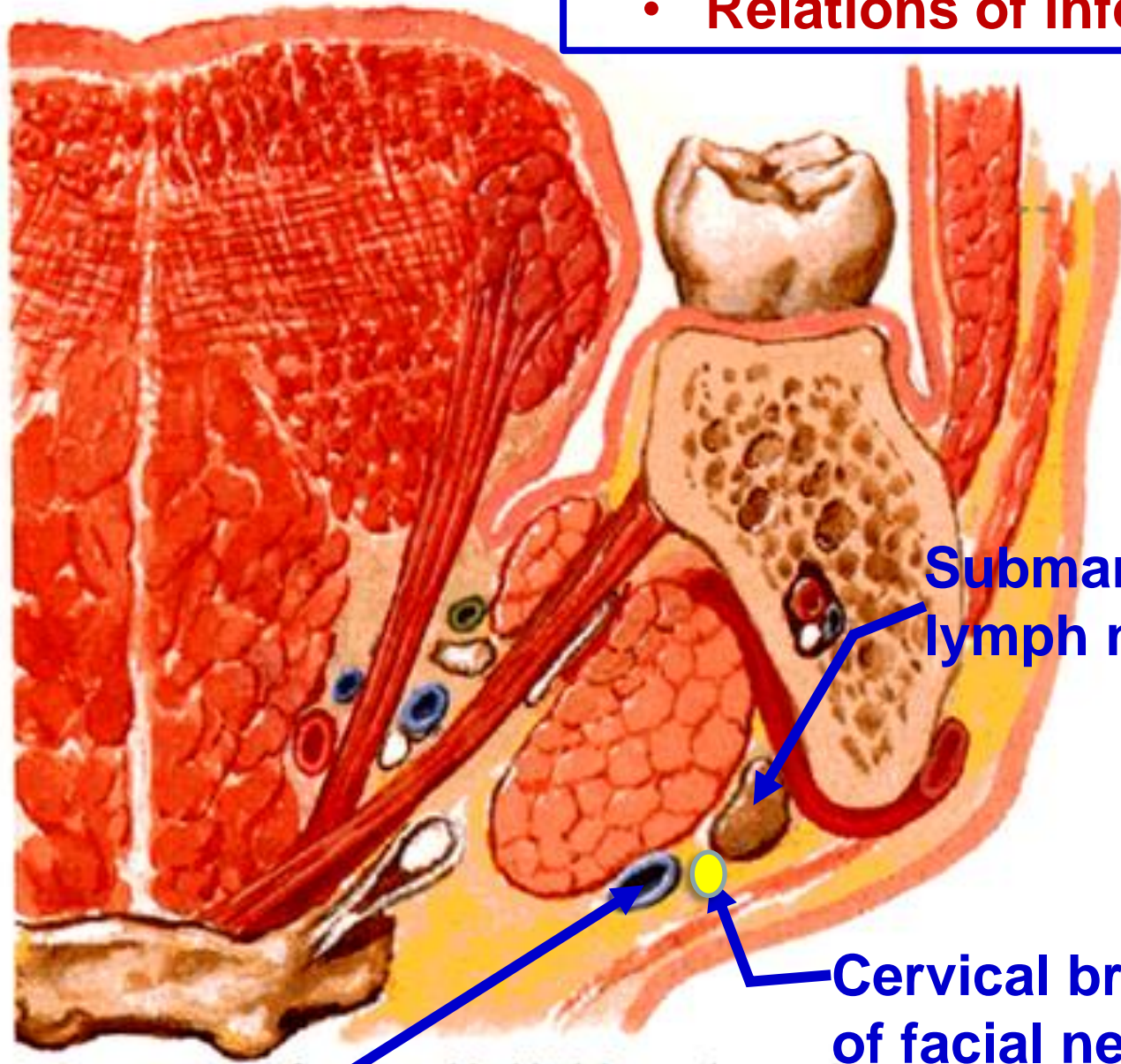
Insertion of medial pterygoid muscle

[Prof. Dr. Youssef Hussein Anatomy - YouTube](#)

**Coronal section**



- **Relations of inferolateral surface of superficial part**

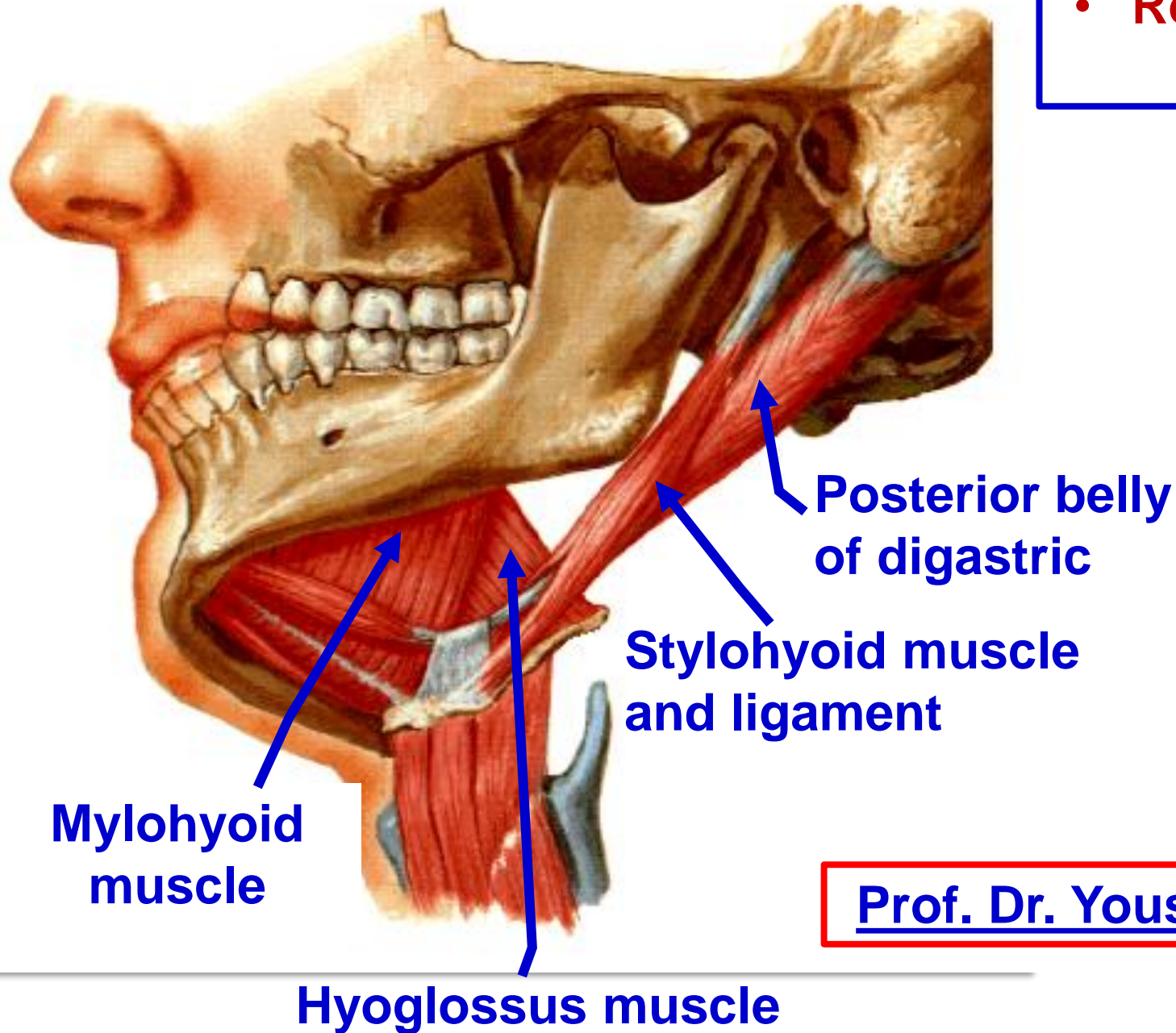


- (1) Skin.
- (2) Superficial fascia containing platysma and cervical branch of facial nerve.
- (3) Deep fascia.
- (4) Submandibular lymph nodes.
- (5) Anterior Facial vein.

**Submandibular lymph nodes**

**Cervical branch of facial nerve**

**Facial vein**

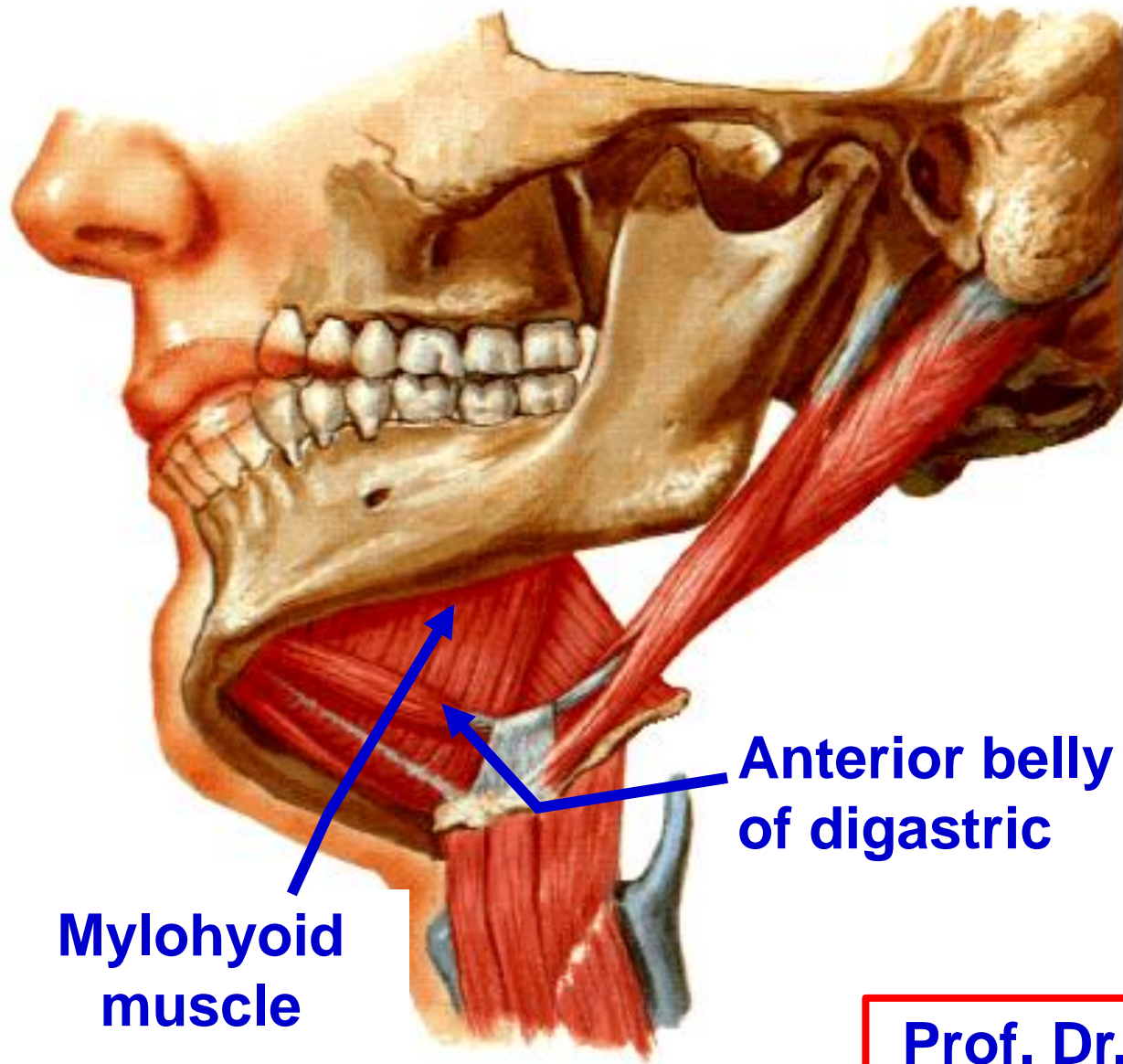


- **Relations of the medial surface of superficial part**

- Its **anterior part** is related to mylohyoid muscle
- Its **middle part** is related to hyoglossus muscle
- Its **posterior Part** is related to (a) Posterior belly of digastric. (b) Stylohyoid muscle and stylohyoid ligament.

[Prof. Dr. Youssef Hussein Anatomy - YouTube](#)





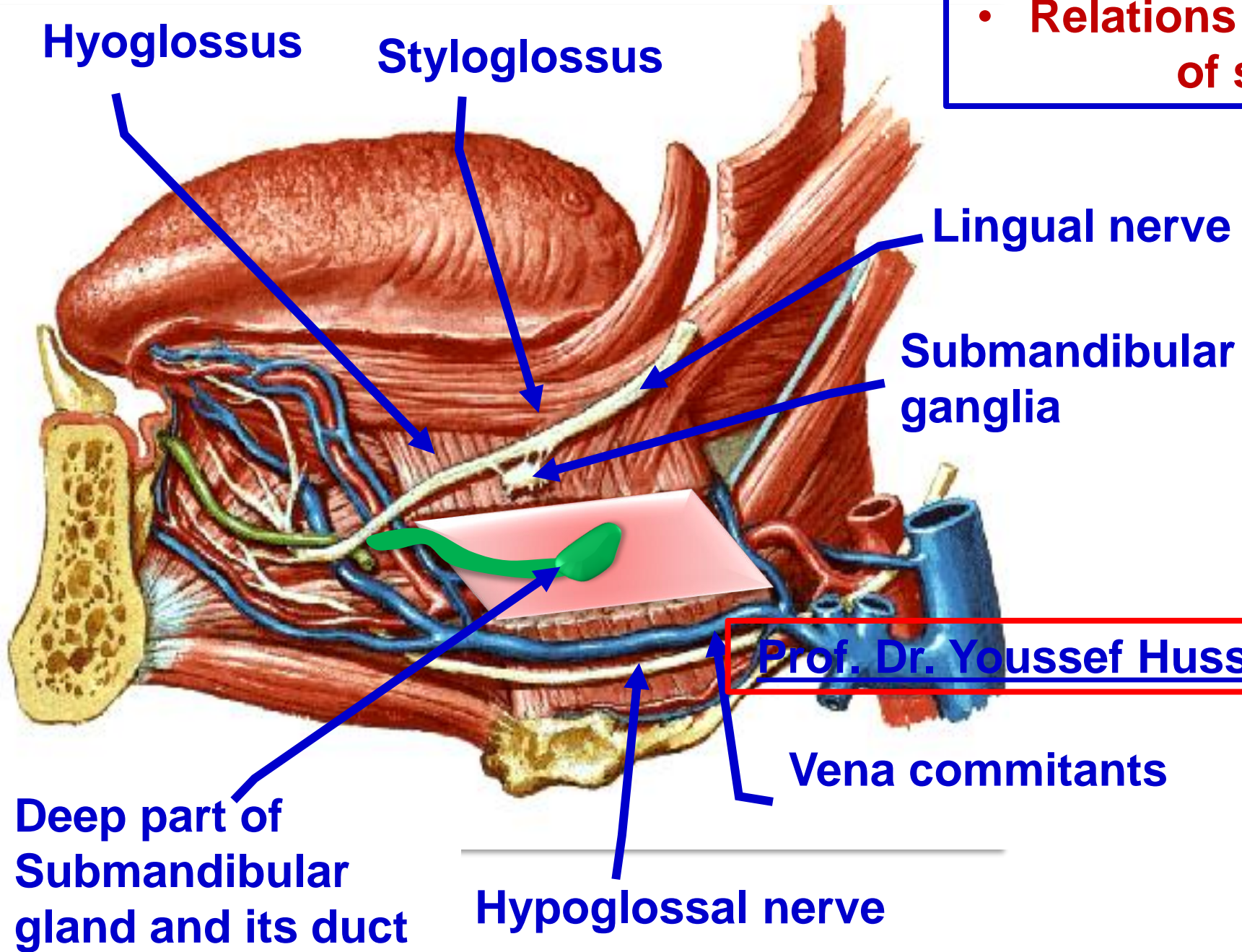
- **Relations of the medial surface of superficial part**

- Its **anterior part** is related to mylohyoid muscle separated from it by
  - a) Mylohyoid nerve and vessels
  - b) Anterior belly of digastric muscle
  - c) Submental vessels.



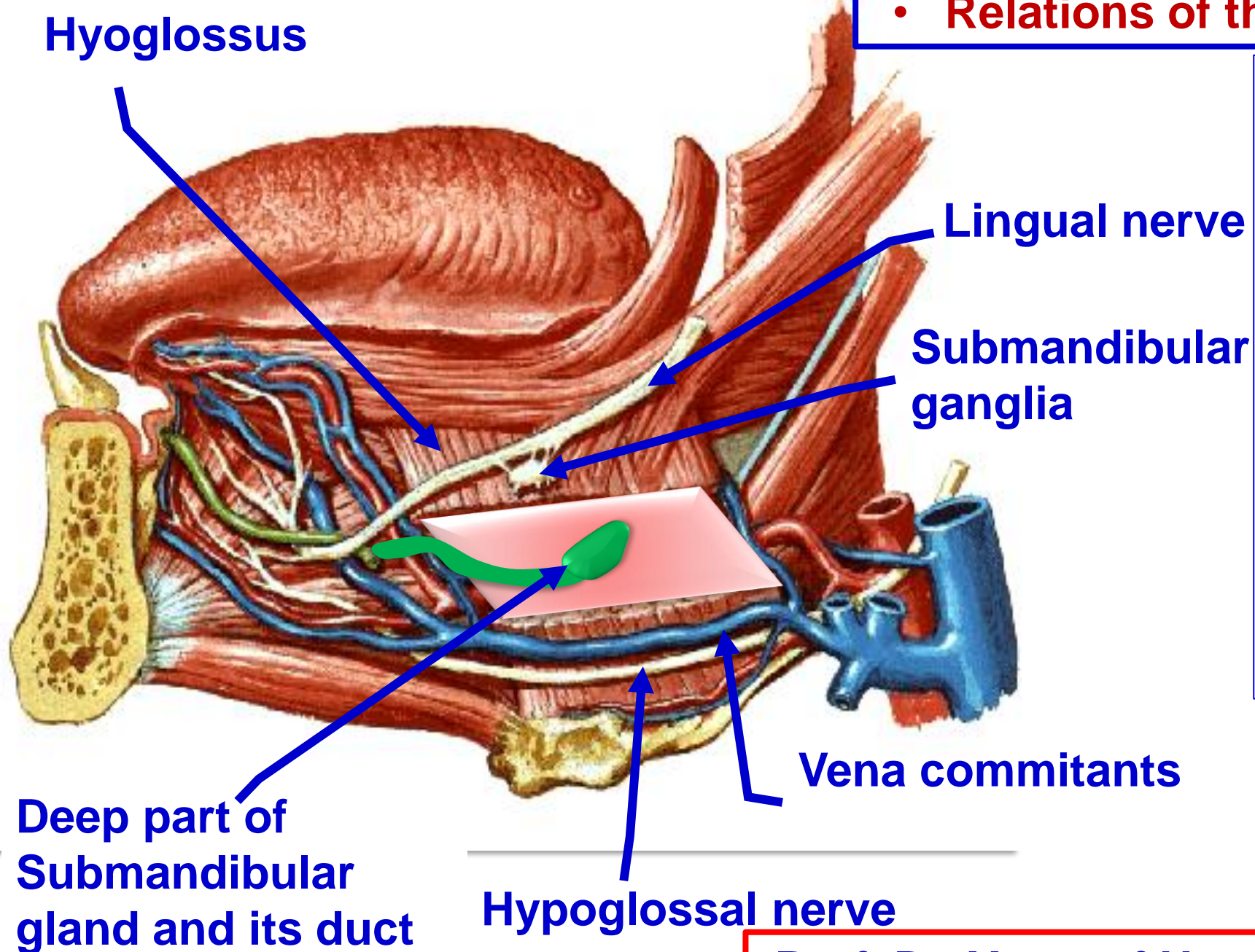
• Relations of the medial surface of superficial part

- Its **middle part** is related to hyoglossus muscle separated from it by from above downward:



Prof. Dr. Youssef Hussein Anatomy - YouTube

• **Relations of the deep part and duct**



- Lingual nerve (**above**).
- Hypoglossal nerve and vena comitantes (**below**).
- Hyoglossus muscle (**Medially**).
- Mylohyoid muscle (**Laterally**).



Lingual nerve

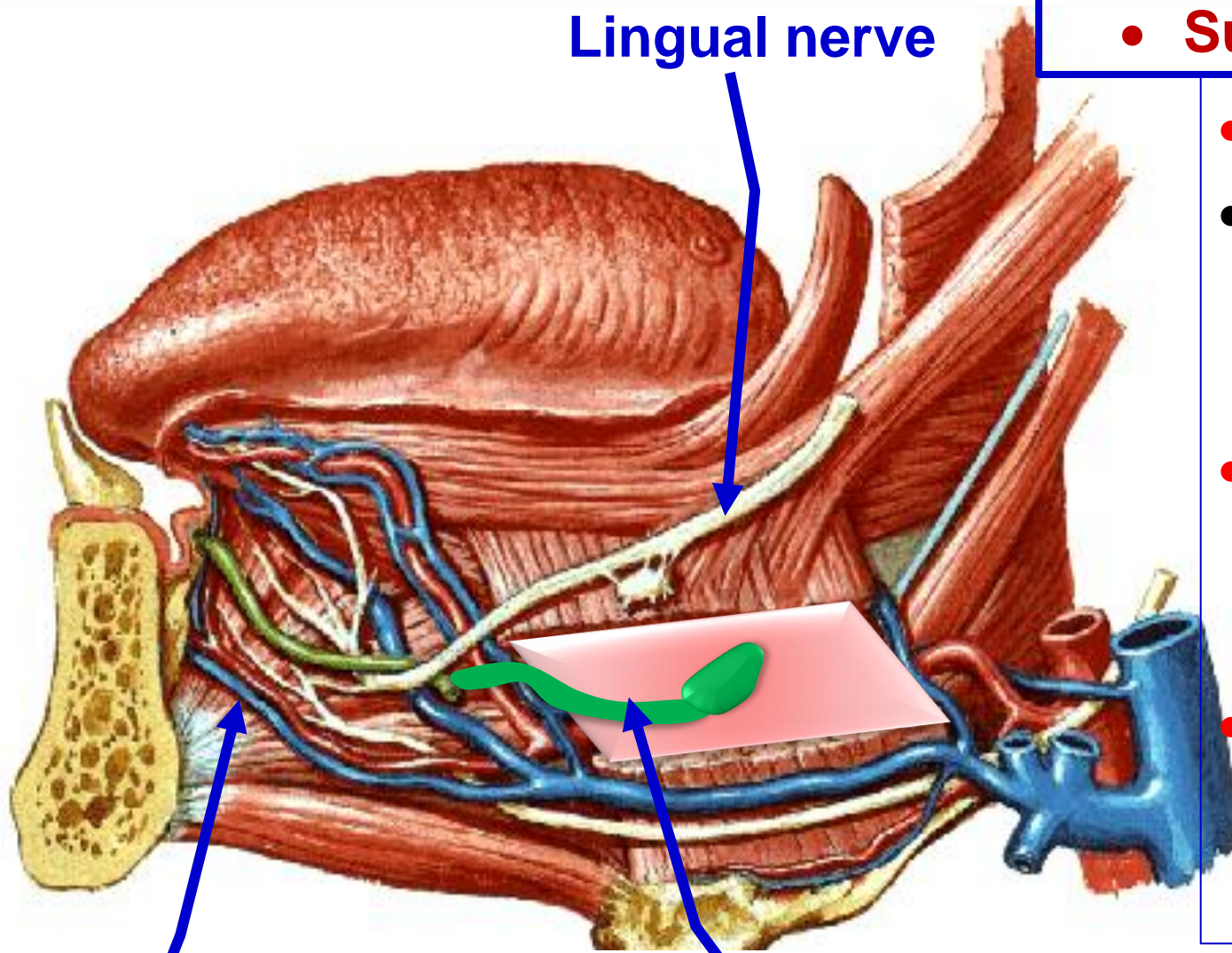
## • Submandibular (Wharton's) duct

- **Length:** 5 cm long.
- It passes between genioglossus (medially) and sublingual gland (laterally).
- **Lingual nerve** has triple relations with duct: **lateral, below, medial.**
- **Ends;** opens into sublingual papilla in floor of mouth close to frenulum of tongue.

Genioglossus

Deep part of  
Submandibular  
gland and its duct

Prof. Dr. Youssef Hussein Anatomy - YouTube



<https://www.youtube.com/@ProfDrYoussefHusseinAnatomy/playlists>

# Sublingual gland

[Prof. Dr. Youssef Hussein Anatomy - YouTube](#)

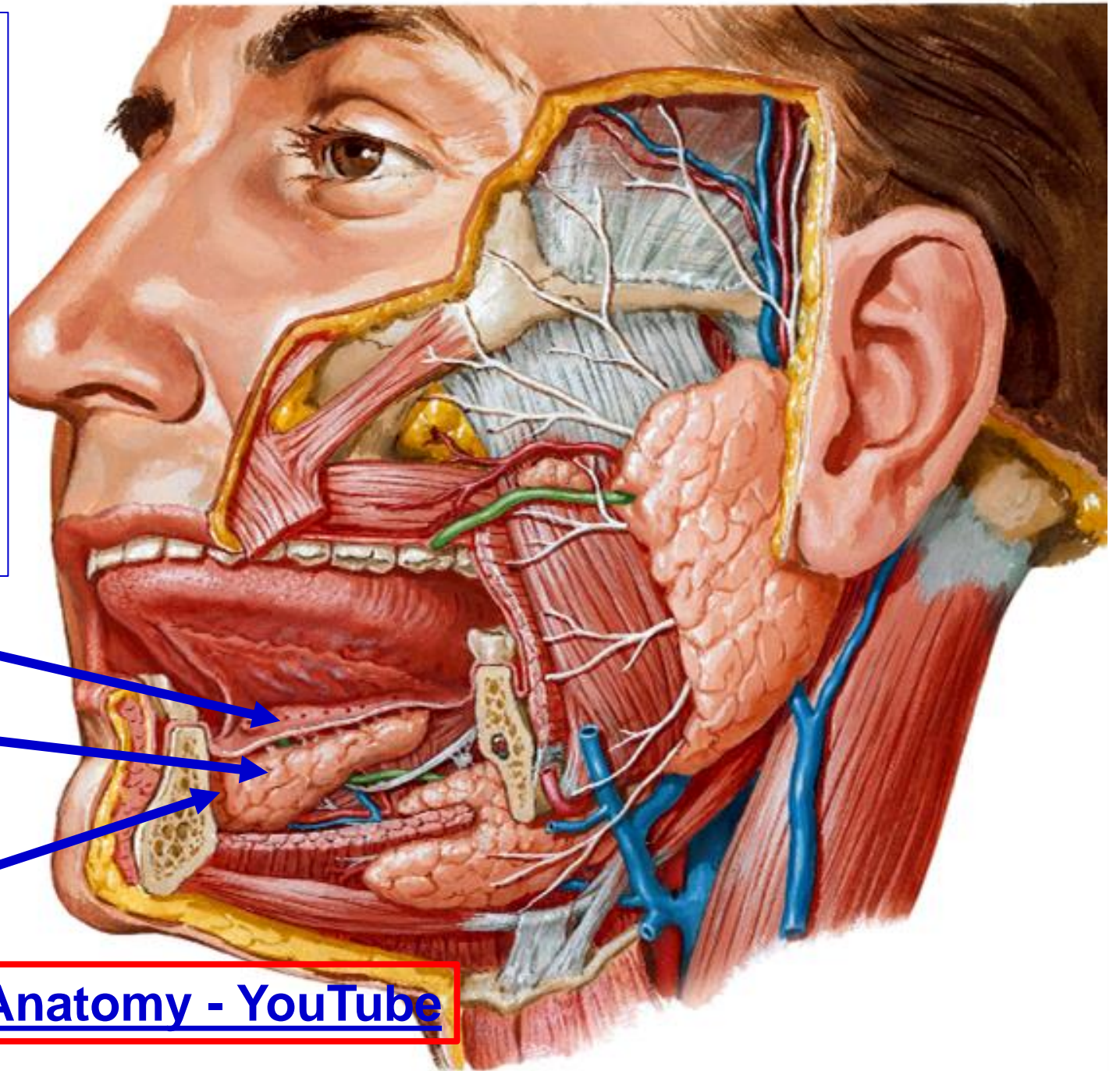


- **Site:** It lies under the mucous membrane of the floor of the mouth forming sublingual fold and occupying the sublingual fossa of the mandible.
- **Size:** it is the smallest of the 3 salivary glands.
- **Shape:** almond shaped.

**Mucus membrane**

**Sublingual gland**

**Sublingual fossa**

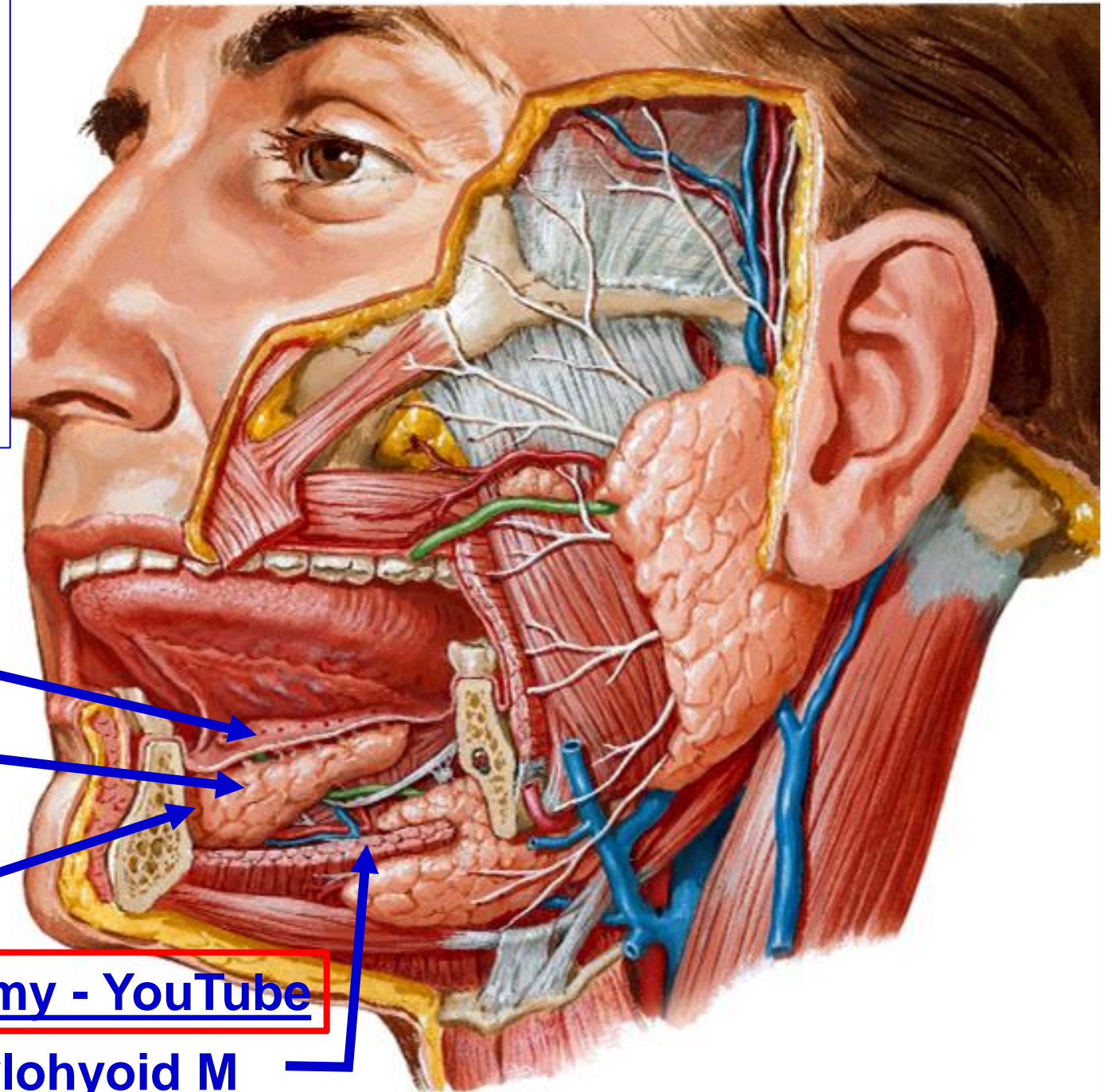


**Prof. Dr. Youssef Hussein Anatomy - YouTube**



- **Relations:**

- **Superiorly:** mucous membrane of the floor of the mouth.
- **Inferiorly:** mylohyoid muscle.
- **Laterally:** sublingual fossa of mandible.



Mucus membrane

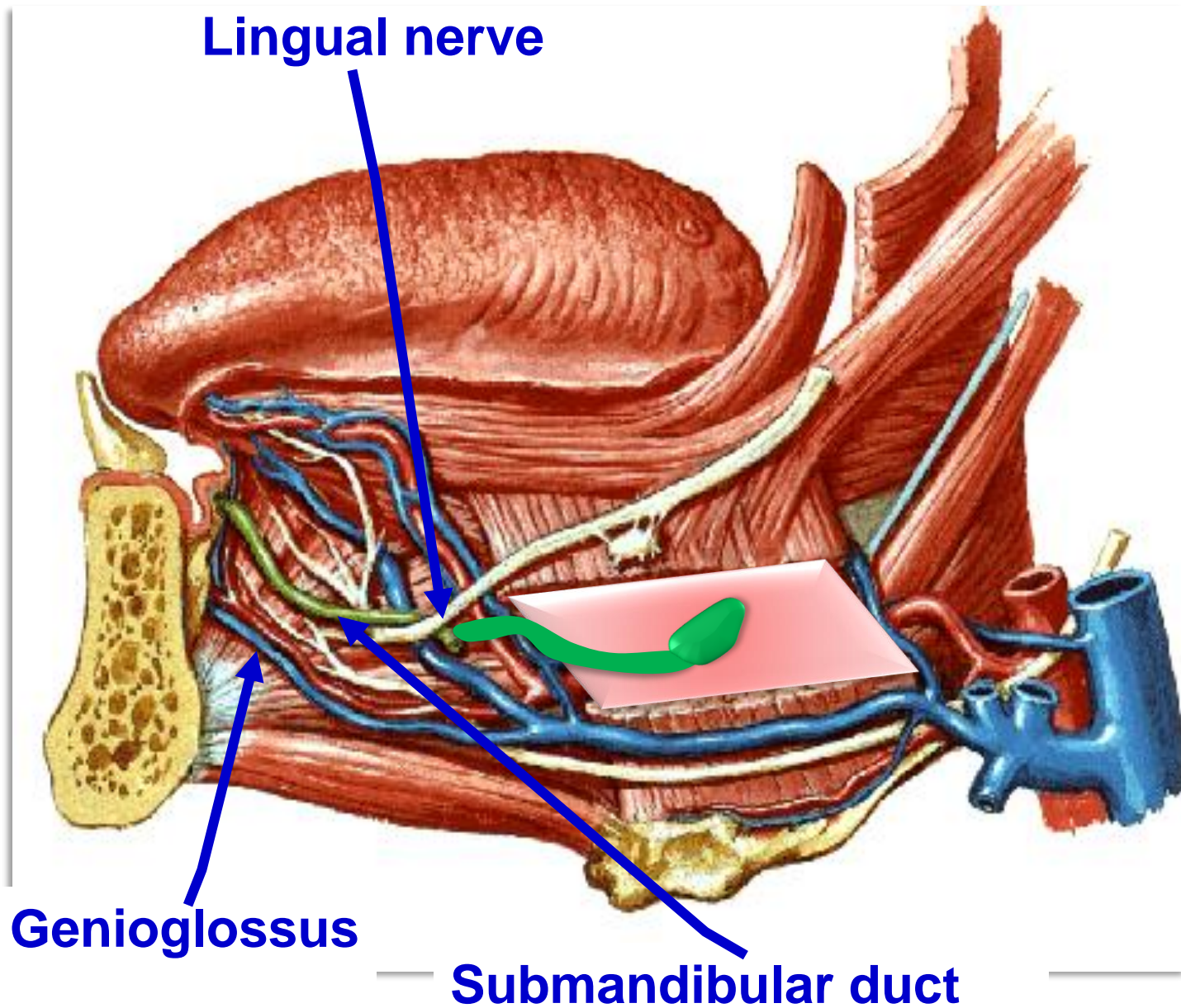
Sublingual gland

Sublingual fossa

[Prof. Dr. Youssef Hussein Anatomy - YouTube](#)

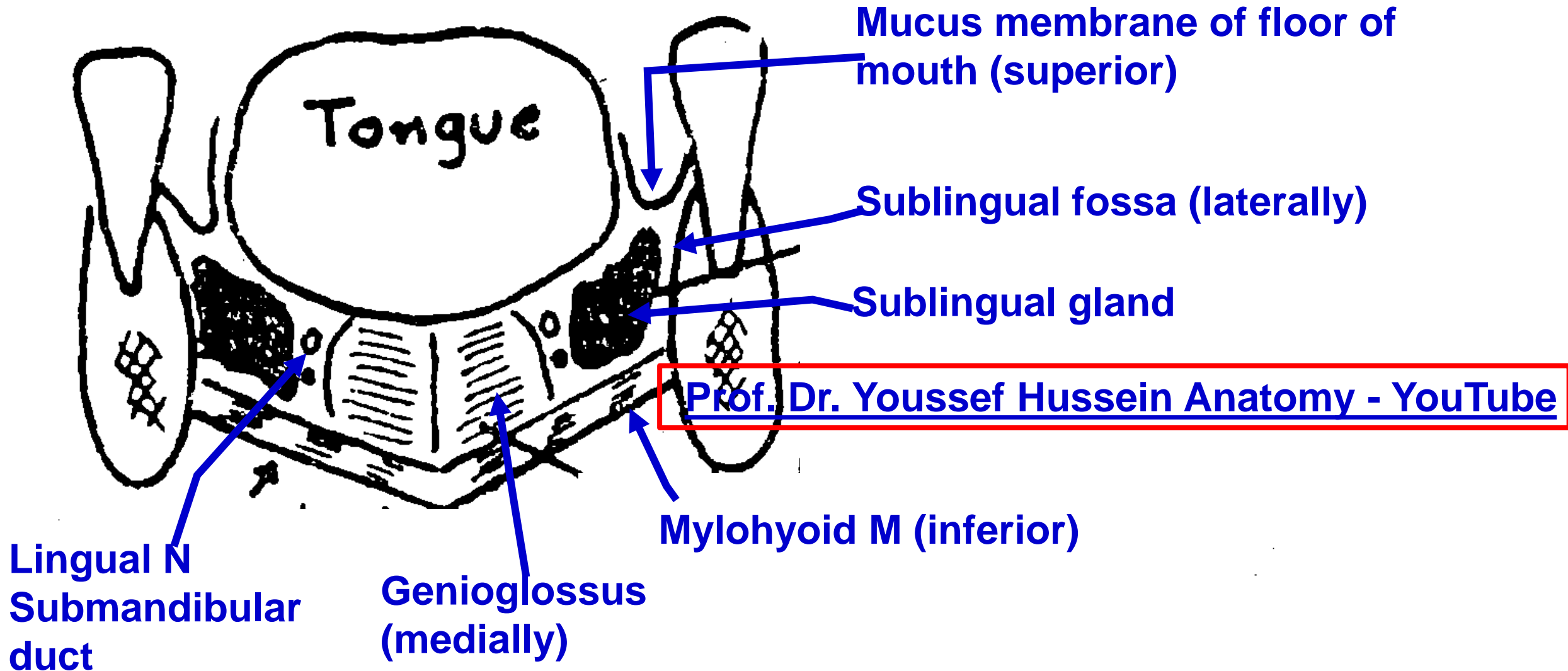
Mylohyoid M





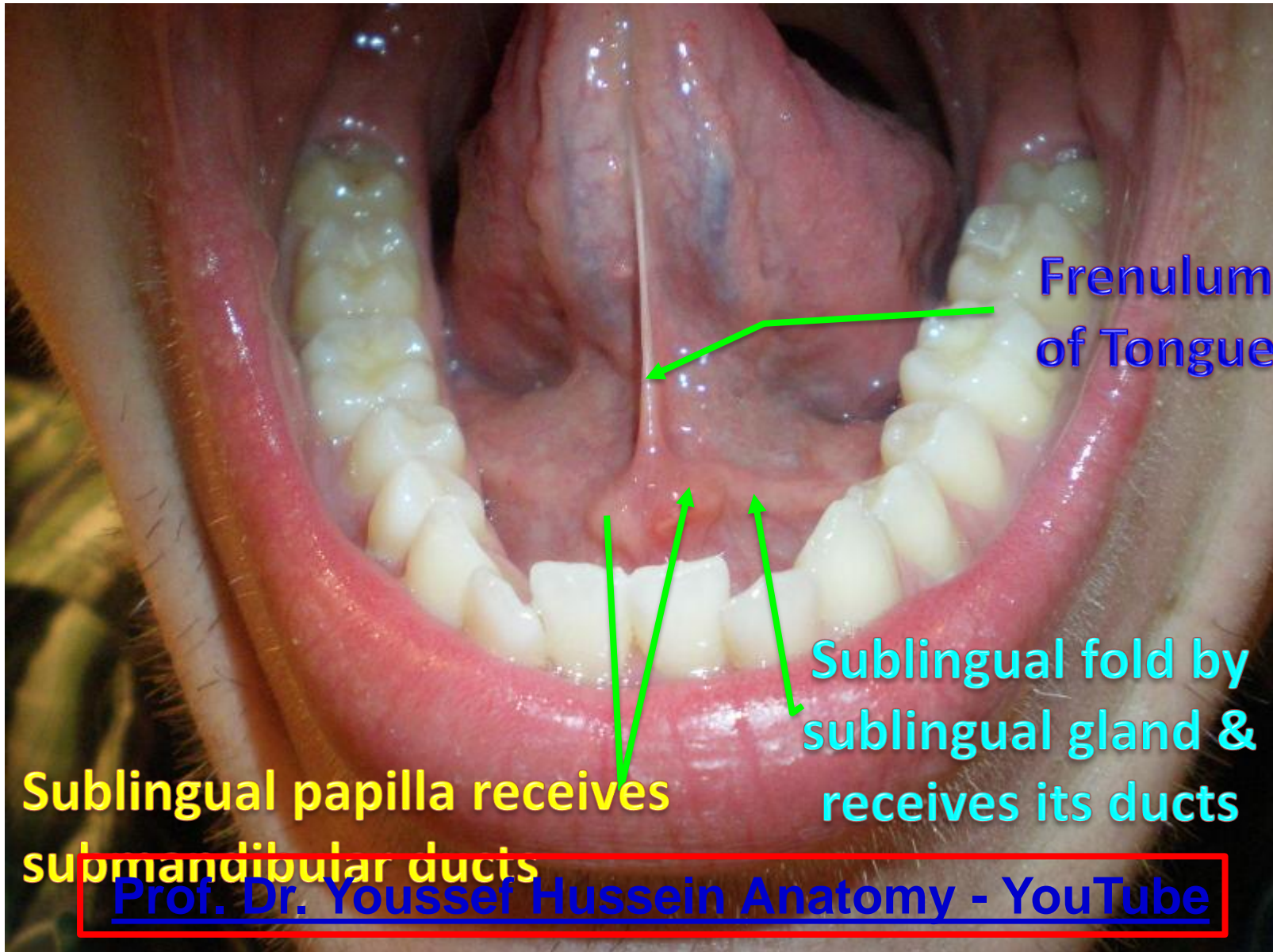
**Medial relations of sublingual gland:** genioglossus muscle separated from it by the lingual nerve and submandibular duct.

- **Relations of sublingual gland**
  - **Coronal section**





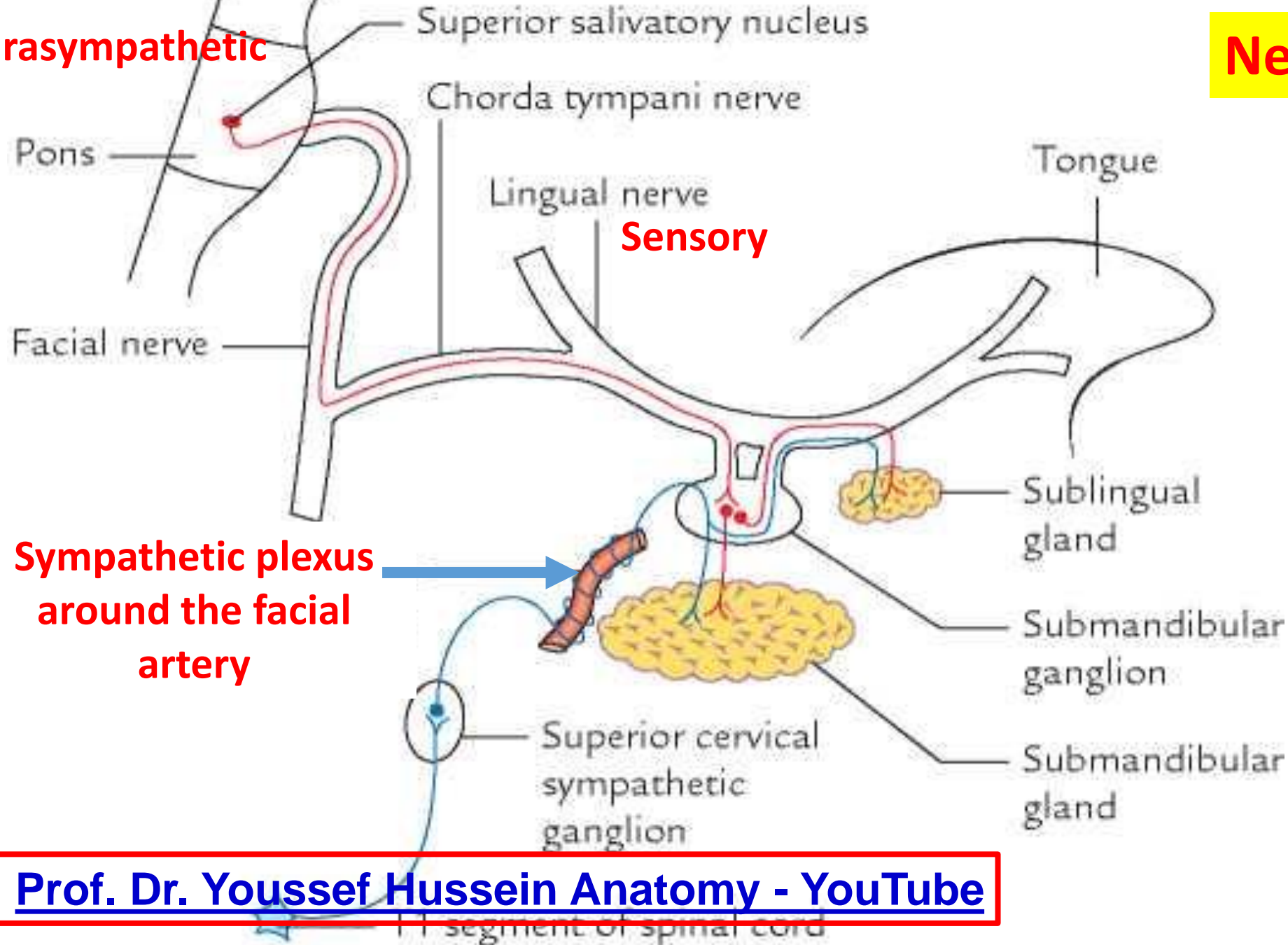
# Floor of mouth cavity



- **Submandibular duct** opens into **sublingual papilla** in floor of mouth close to frenulum of tongue.
- **Sublingual gland** gives about 10-20 ducts which open into **sublingual fold** in floor of mouth.

**Parasympathetic**

**Nerve supply**



**Sympathetic plexus  
around the facial  
artery**

**Prof. Dr. Youssef Hussein Anatomy - YouTube**

- The **stones** affect the **submandibular duct**
- **Causes:** Dehydration, medications such as diuretics and anticholinergic drugs, Trauma to the inside of the mouth or Smoking
- **The main symptoms** are pain and swelling in the gland and under the tongue. Pain becomes worse during and after eating.



[Prof. Dr. Youssef Hussein Anatomy - YouTube](https://www.youtube.com/@ProfDrYoussefHusseinAnatomy/playlists)

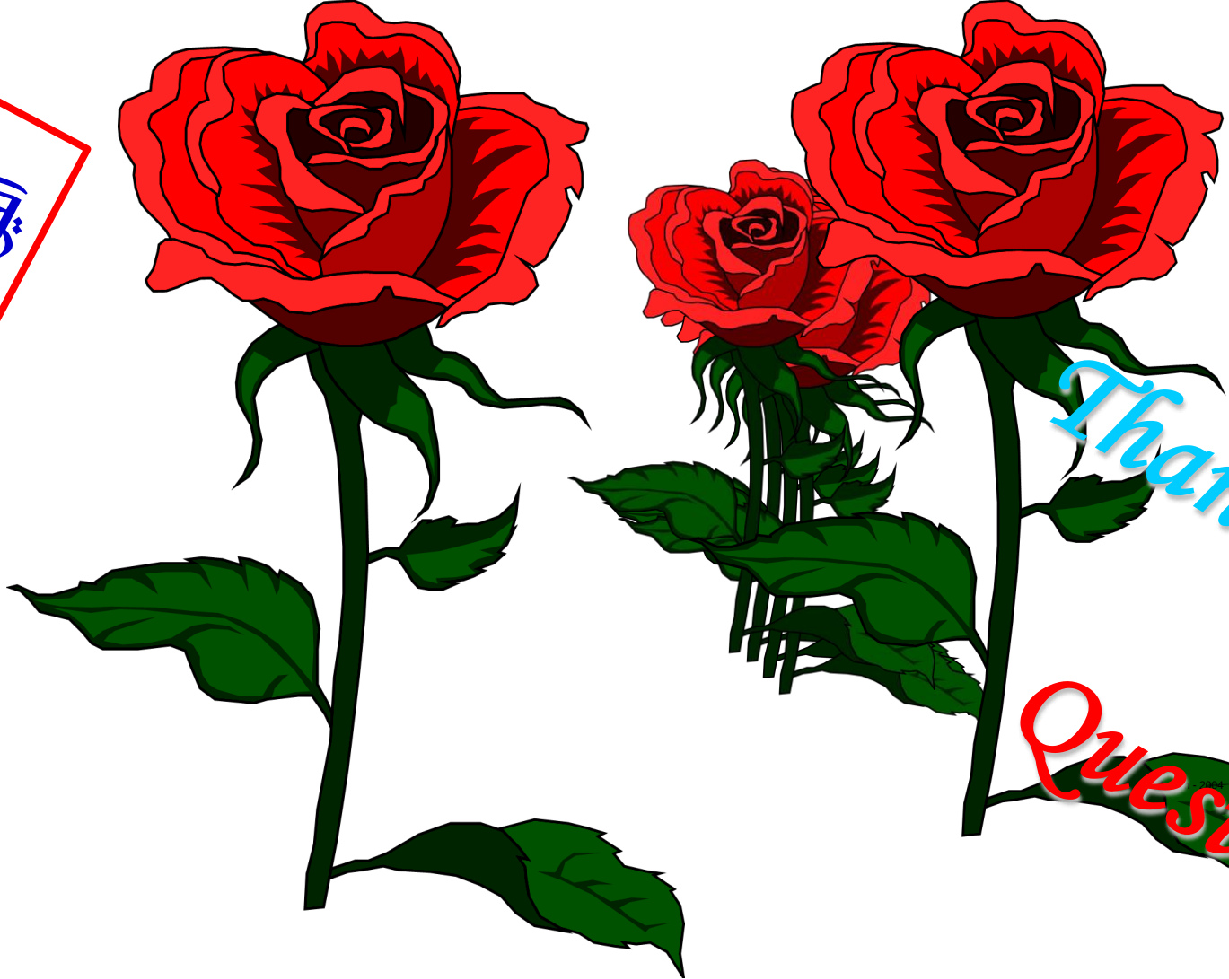
<https://www.youtube.com/@ProfDrYoussefHusseinAnatomy/playlists>



[https://www.youtube.com/channel/UCVSNqbibj9UWYaJdd\\_cn0PQ](https://www.youtube.com/channel/UCVSNqbibj9UWYaJdd_cn0PQ)

يُمنع أخذ السلايدات بدون  
إذن المحرر واي اجراء  
يخالف ذلك يقع تحت  
طائلة المسؤولية القانونية

اليوتيوب د. يوسف حسين

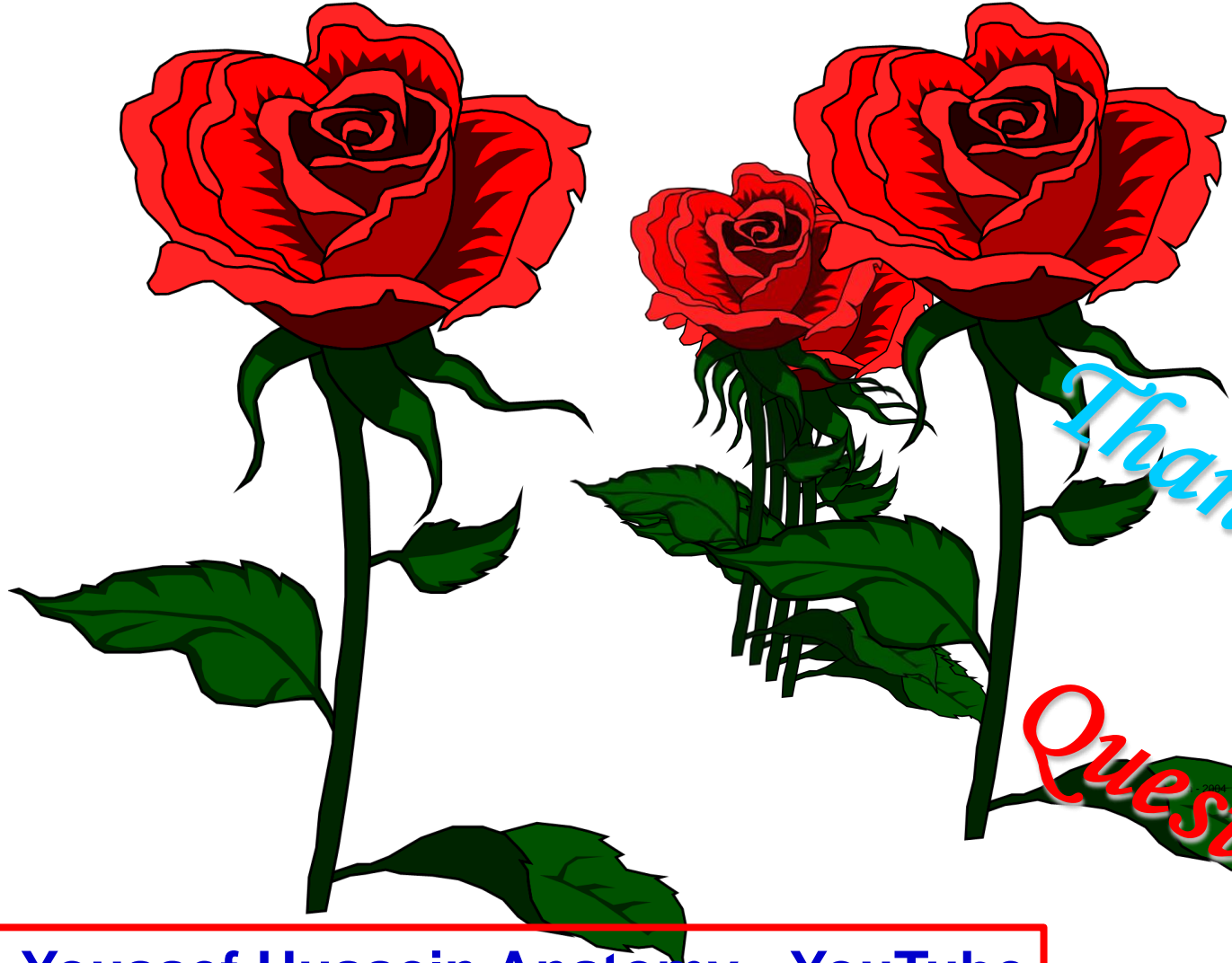


Thank You

Questions

<https://www.youtube.com/@ProfDrYoussefHusseinAnatomy/playlists>

[https://www.youtube.com/channel/UCVSNqbibj9UWYaJdd\\_cn0PQ](https://www.youtube.com/channel/UCVSNqbibj9UWYaJdd_cn0PQ)



يُمنع أخذ السلايدات بدون  
إذن المحرر واي اجراء  
يخالف ذلك يقع تحت  
طائلة المسؤولية القانونية

*Thank You*

*Questions*

**Prof. Dr. Youssef Hussein Anatomy - YouTube**