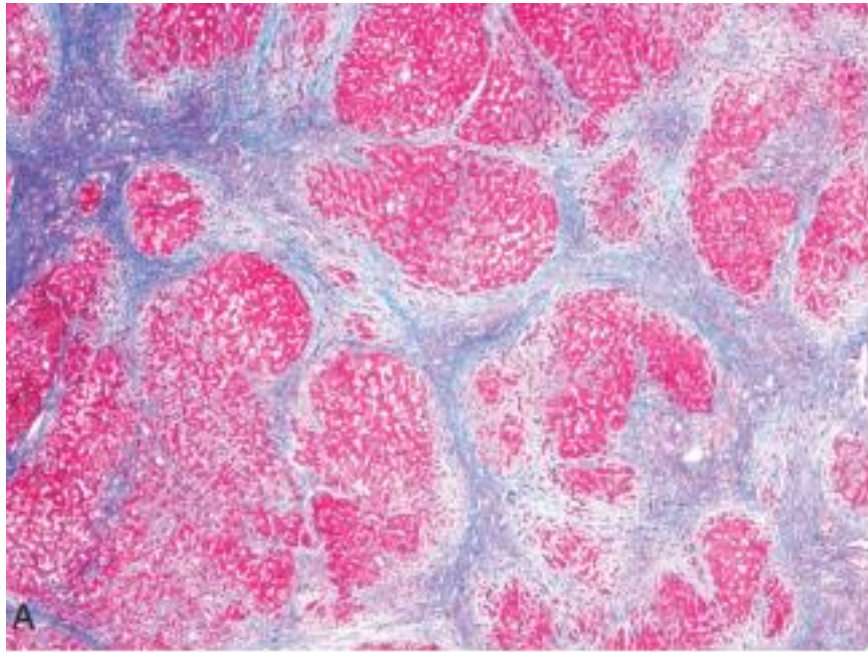
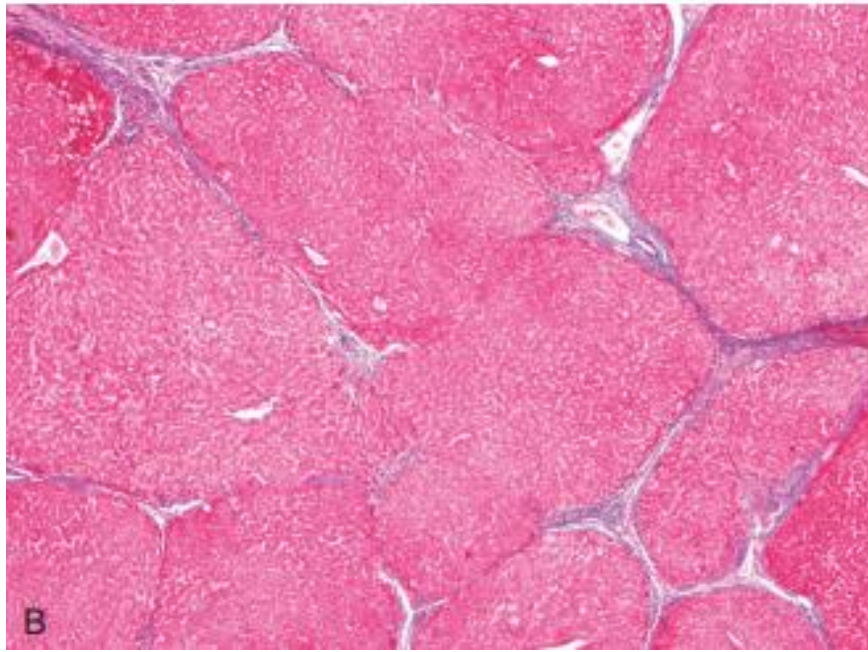
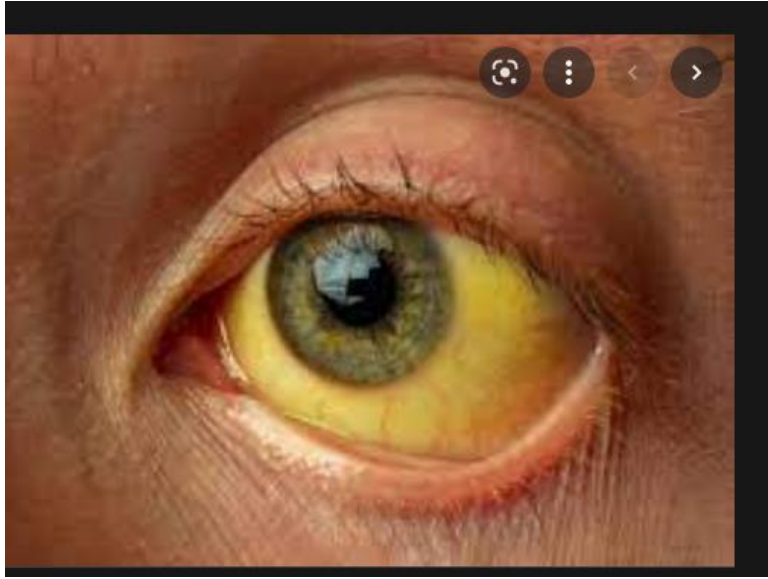


GIT LAB-3

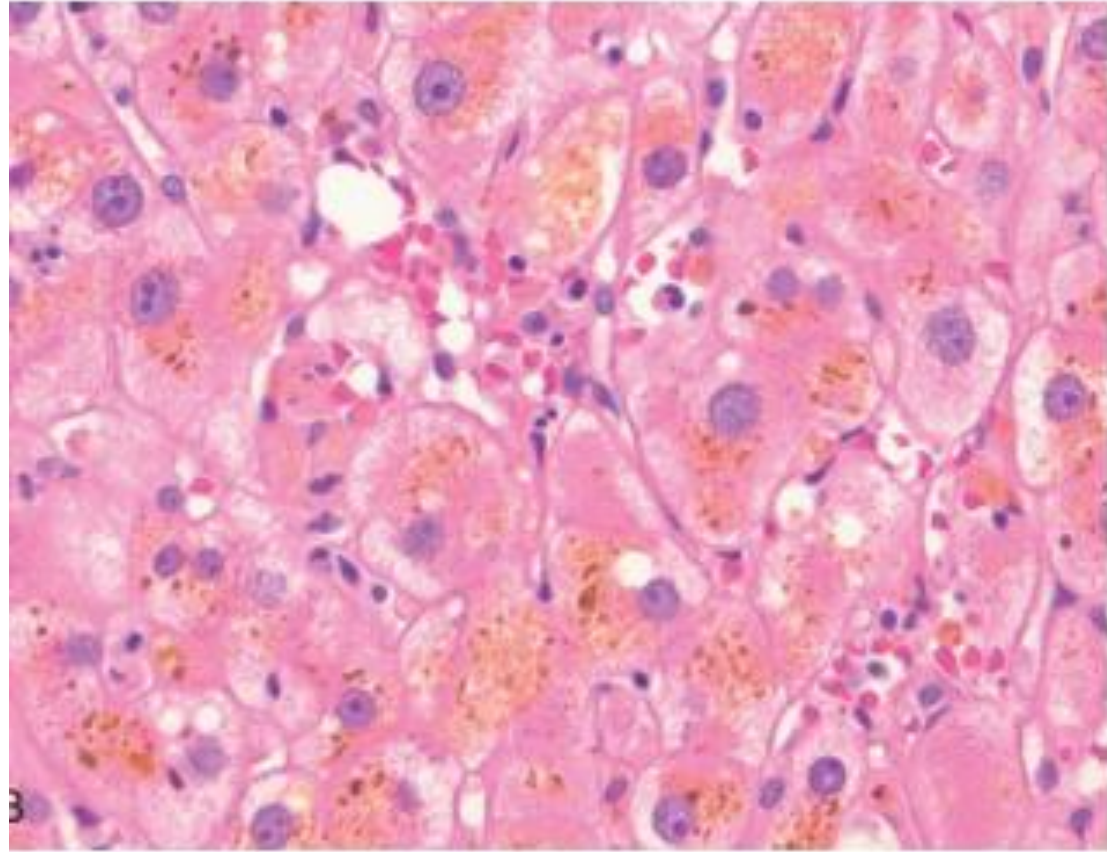


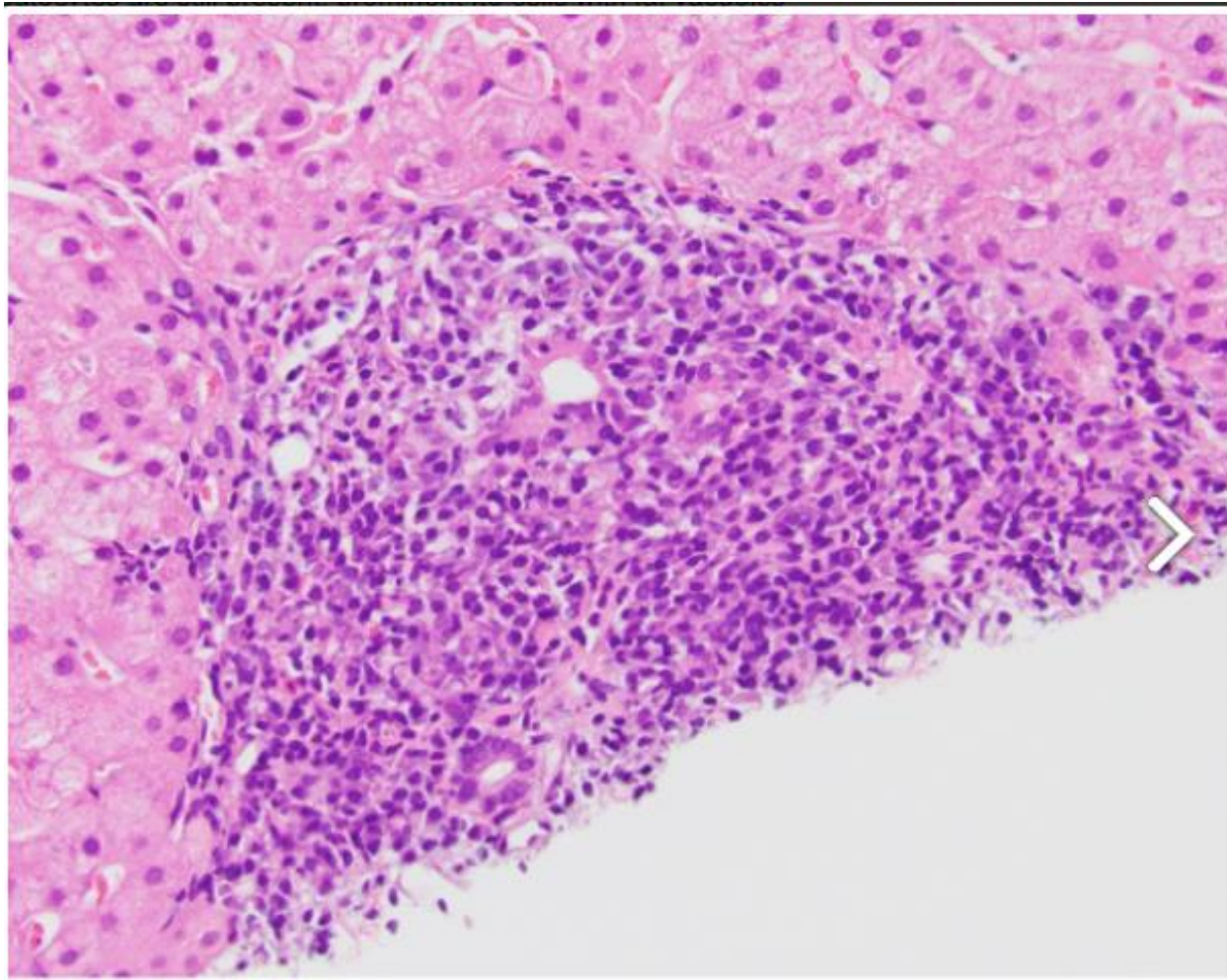


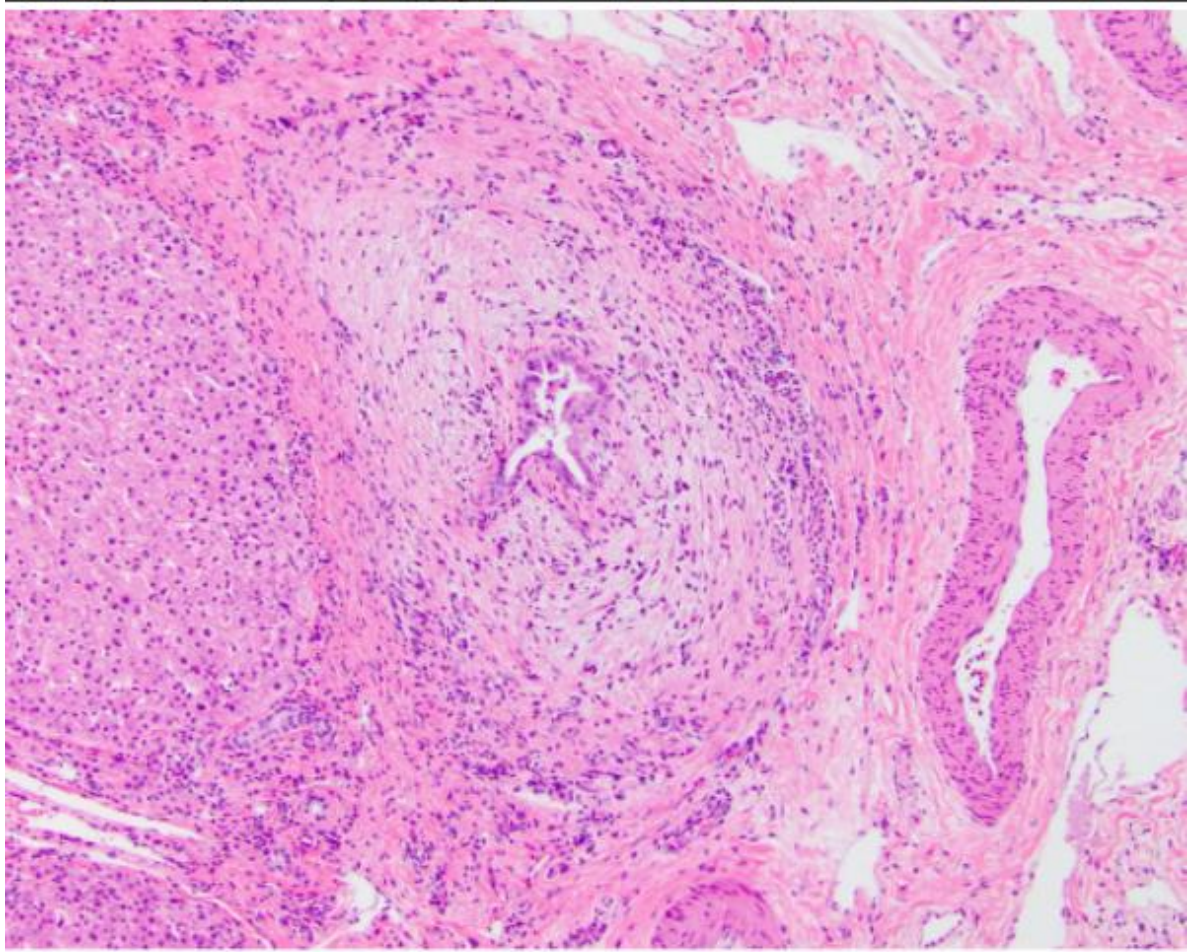


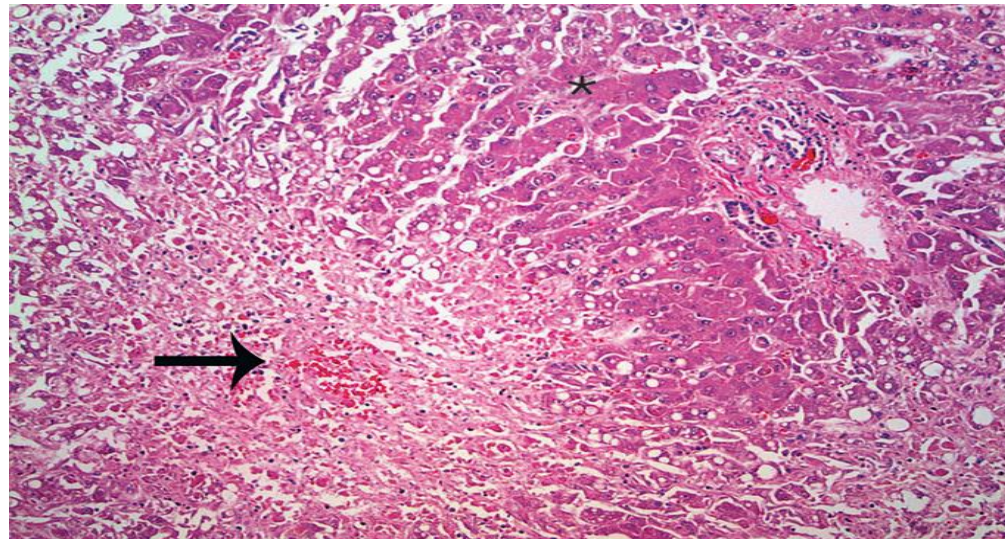
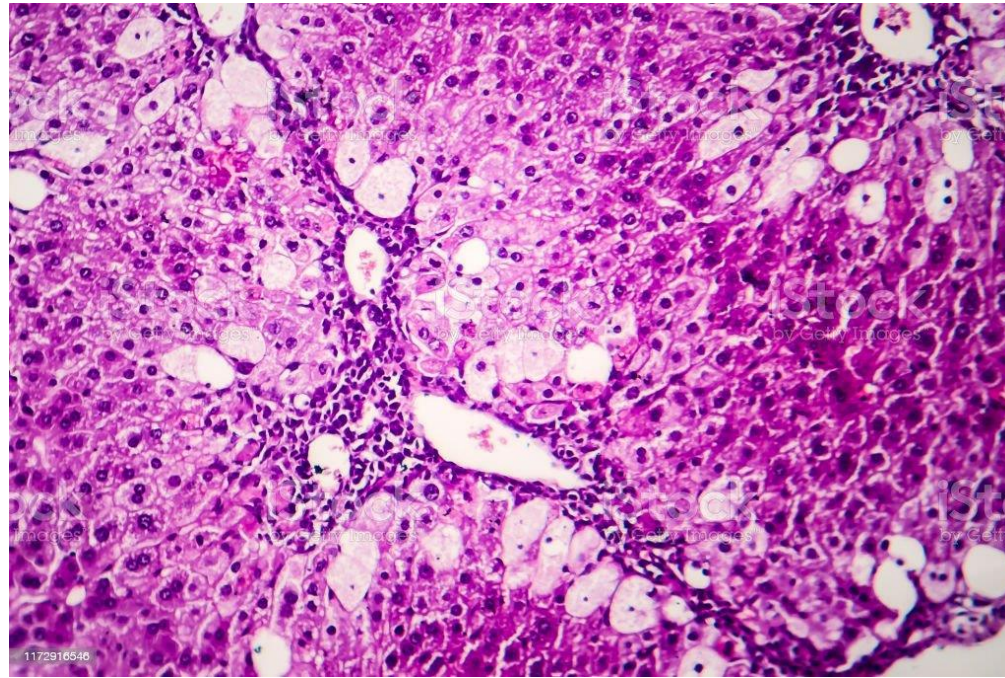


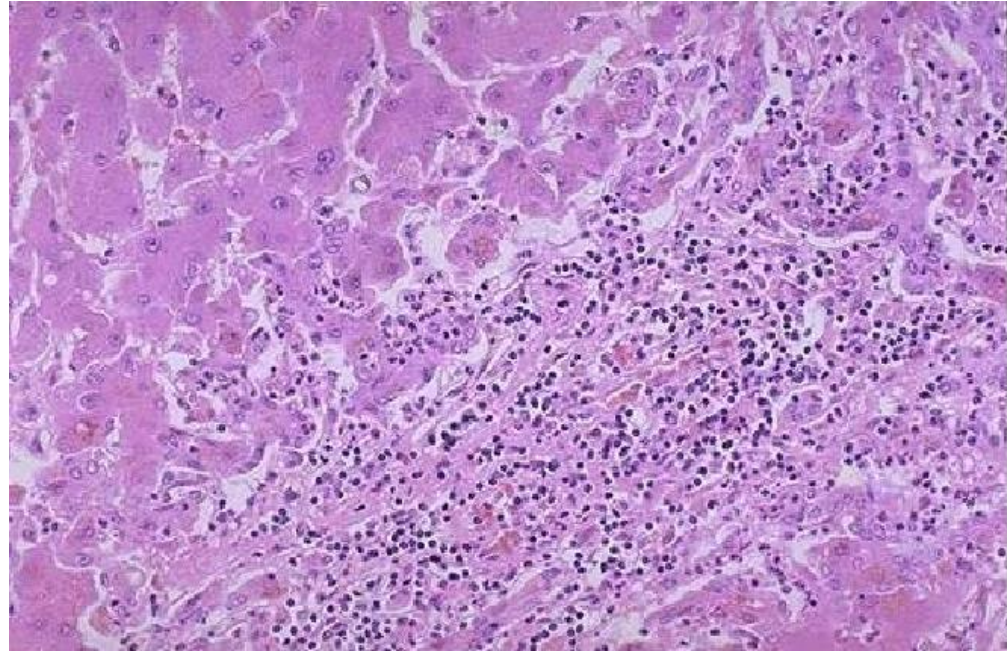












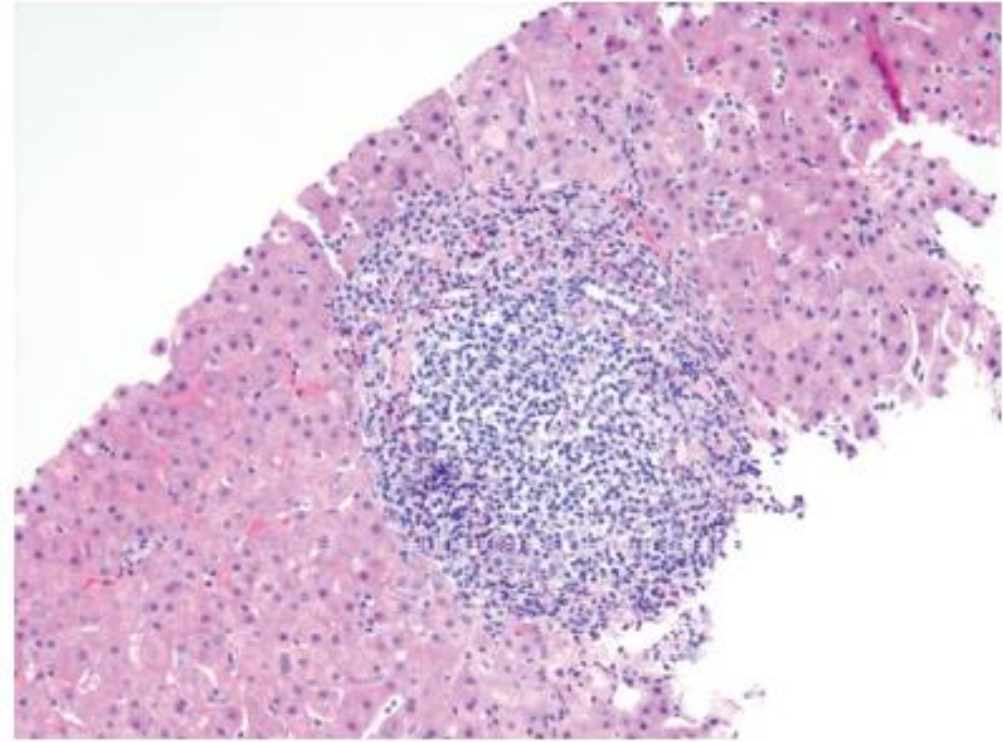


Fig. 16.15 Chronic viral hepatitis due to HCV, showing characteristic portal tract expansion by a dense lymphoid infiltrate.

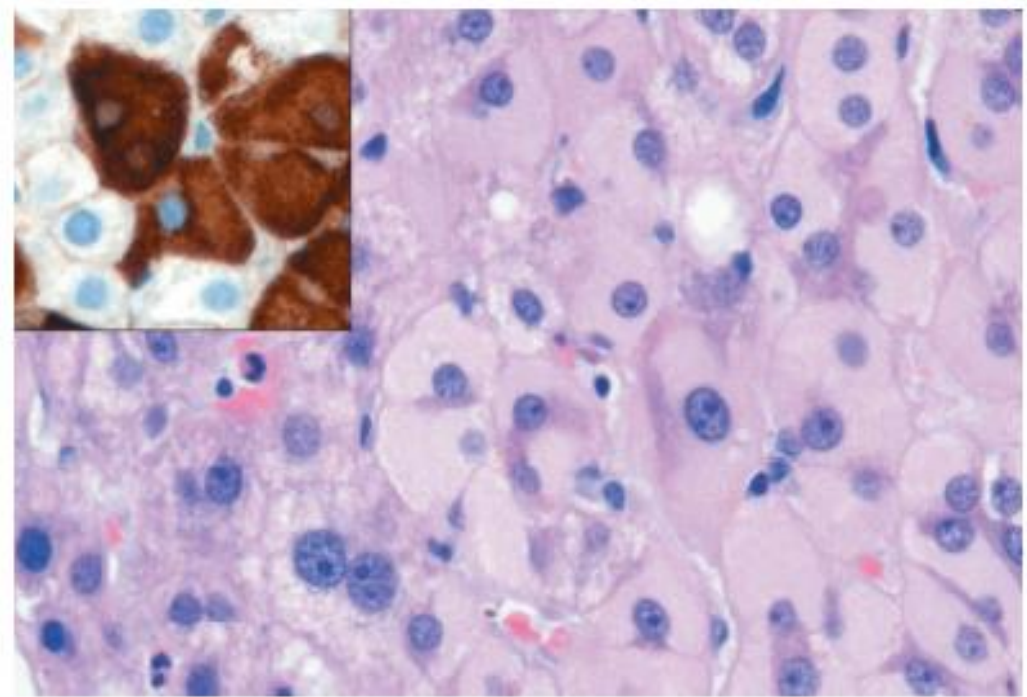


Fig. 16.14 Ground-glass hepatocytes in chronic hepatitis B, caused by accumulation of hepatitis B surface antigen. Hematoxylin-eosin staining shows the presence of abundant, finely granular pink cytoplasmic inclusions; immunostaining (*inset*) with a specific antibody confirms the presence of surface antigen (*brown*).

