

HLS LAB

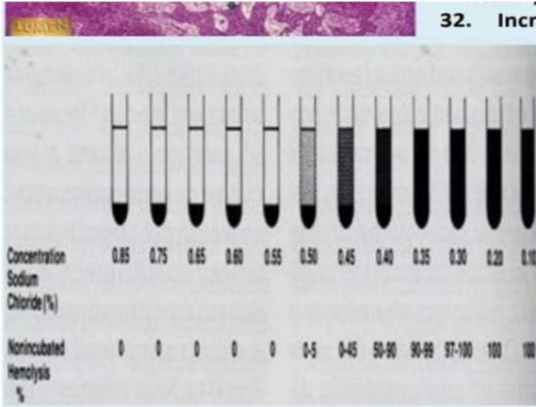
Wateen Archive

Done by:



Physiology

32. Increase osmotic fragility is hand in all EXCEPT?



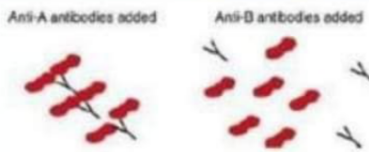
- a. Spectrin deficiency.
- b. G.6PD deficiency.
- c. Hereditary hemolytic anemia.
- d. Sickle cell anemia.**
- e. Old RBCs.

33. Glicosylated Hb (Hb A1c) Is?



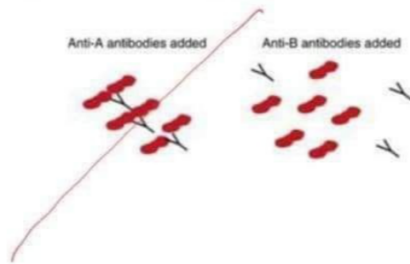
- a. Hb combining with O2.
- b. Hb combining with CO2.
- c. Hb combining with CO.
- d. Hb combining with Glucose.**
- e. Hb combining with Hydrogen.

16. Which blood type is depicted in the following figure?



- a. A**
- b. B
- c. O
- d. AB
- e. Rh +ve

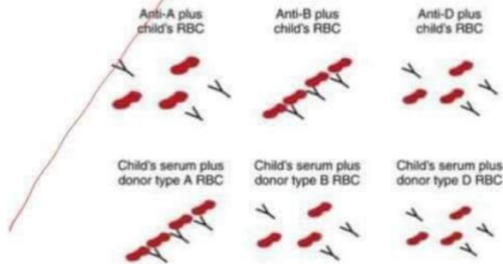
42. Which blood type is depicted in the following figure?



- A) A
- B) B
- C) O
- D) AB

A

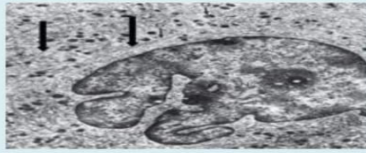
43. A couple requests blood typing of their 2-year-old child (father AB, Rh-negative; mother B, Rh-negative). Results of hemagglutination assays of the child's blood are shown in the next figure. Which of the following conclusions concerning the child's parentage is valid?



- A) The child could be the natural offspring of this couple
- B) The mother could be the natural mother, but the father could not be the natural father

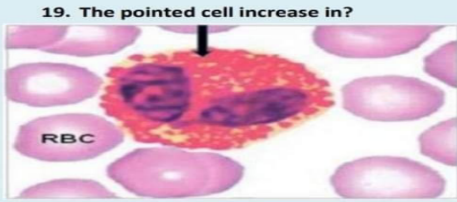
A

Histology



17. The pointed structure is feature characteristic of

- Select one:
- a. Mature monocytes.
 - b. Mature lymphocytes.
 - c. Immature Neutrophils.
 - d. Immature megakaryocyte.
 - G. Mature megakaryocytes.**



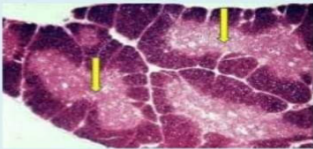
19. The pointed cell increase in?

- Select one:
- a. Acute infection.
 - b. Chronic infection.
 - c. Malaria.
 - d. Parasitic infection.**
 - e. Lymphoma.

1- / 0

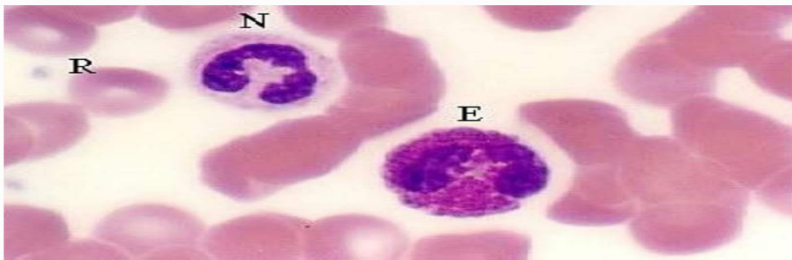
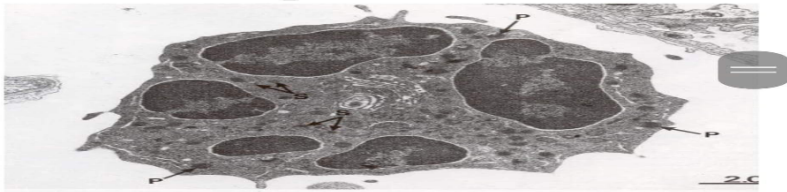
Halsall's corpuscles

5. The pointed area contains?

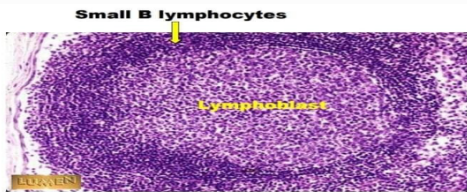


- Select one.
- a. B-lymphocytes and macrophages.
 - b. T,13 lymphocytes and Hassall's corpuscles.
 - c. T-lymphocytes, plasma cells and epithelial reticular cell.
 - d. T-lymphocytes and epithelial reticular cell and reticular fibers.
 - e. T-lymphocytes few, Hassall's corpuscles and macrophages.**

Neutrophils

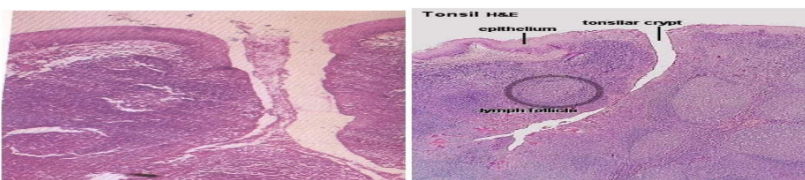


Lymphplast and plasma cell

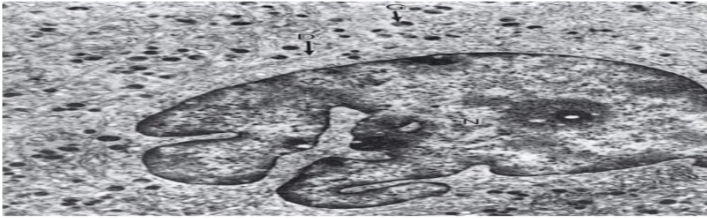


Covered by? **Non keratinized stratified epithelium**

Palatine Tonsil (H&E)



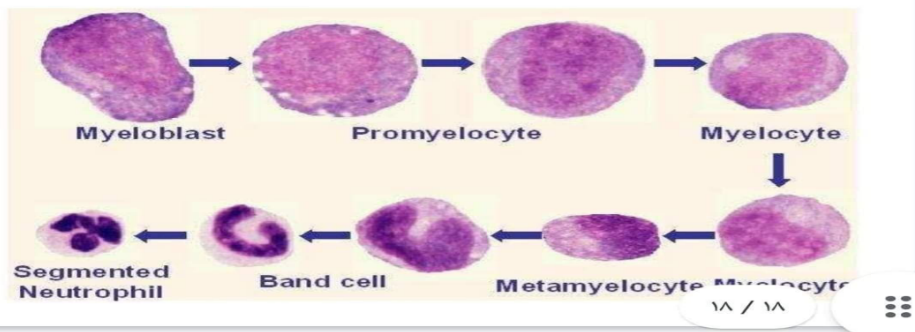
Megakaryocyte



- Lobulated nu
cytoplasmic gr
Delta, Lambda)
- Membranous
lines around ti
- Lines of cleav

Which of the following is cell Increase in infection?

Band cell (الجواب من قوقل، مش من السلايدات ولا من التبييض)



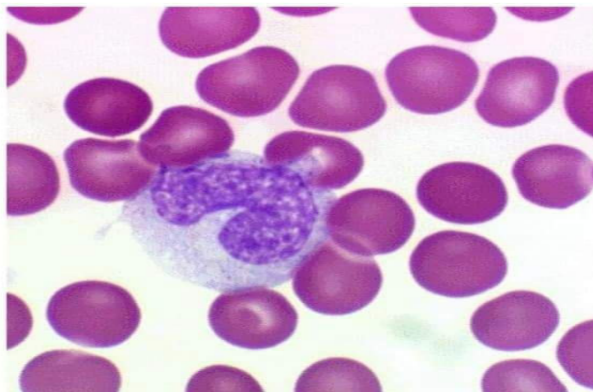
Osteoclast

Granular leukocytes Monocyte

- 8%
largest in

kidney-shaped

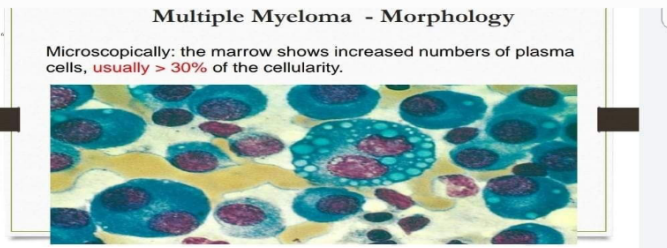
containing pale granules



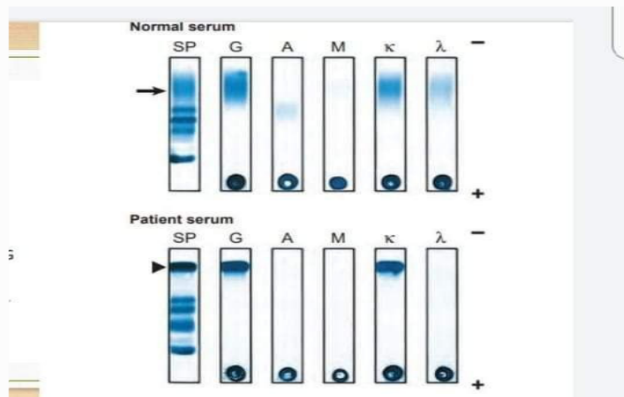
Pathology

The normal value of plasma cells in bone marrow?

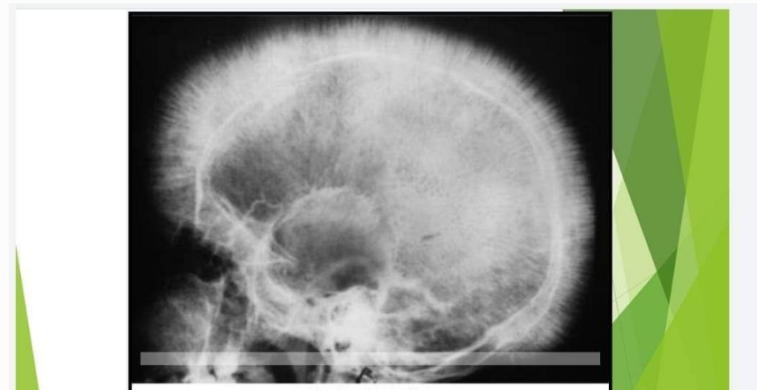
Less than 5%



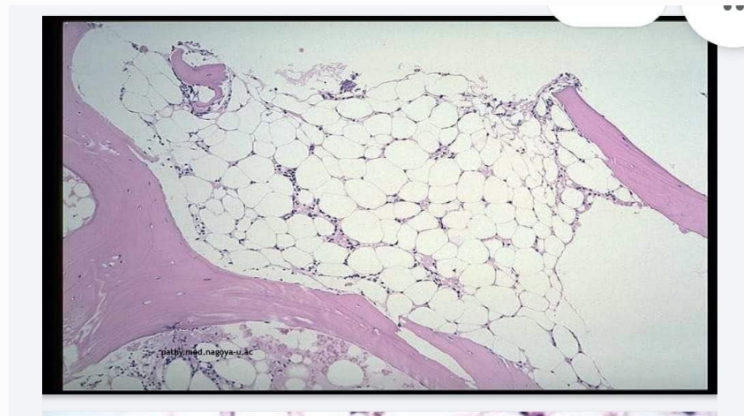
IgG heavy, kappa light.



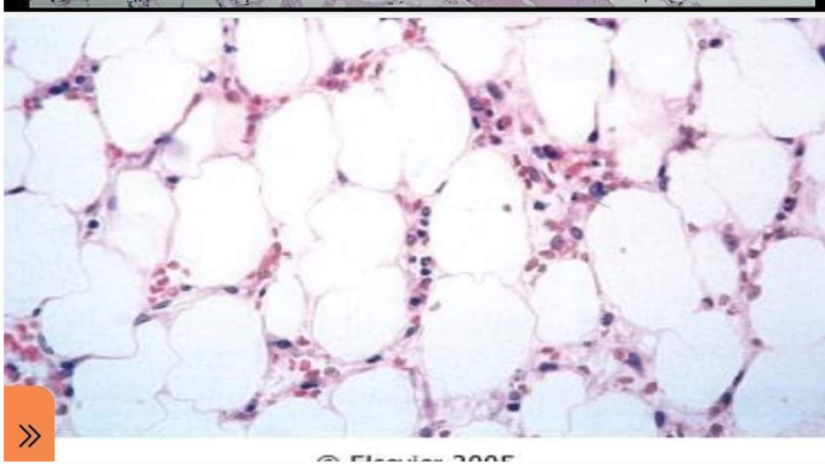
Thalassemia



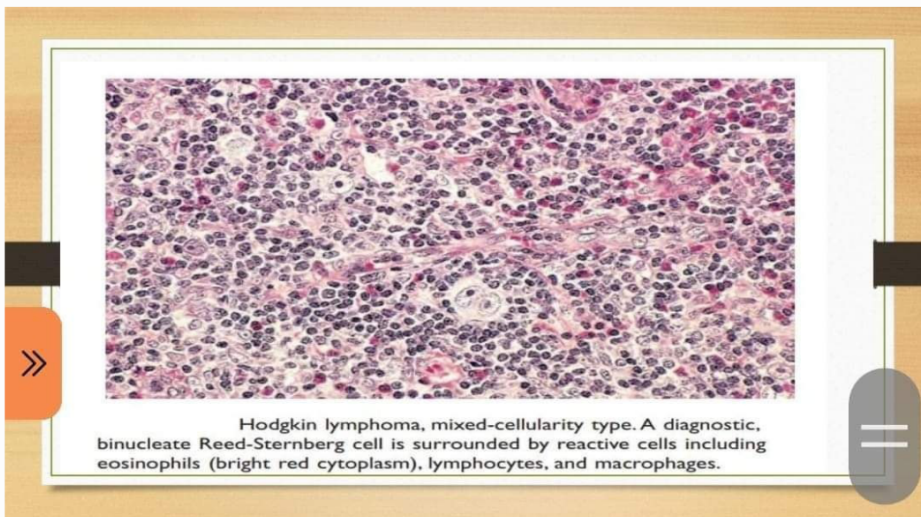
Aplastic



Aplastic anemia



EPV = 70%



Hodgkin lymphoma, mixed-cellularity type. A diagnostic, binucleate Reed-Sternberg cell is surrounded by reactive cells including eosinophils (bright red cytoplasm), lymphocytes, and macrophages.

Symptoms about this patient?

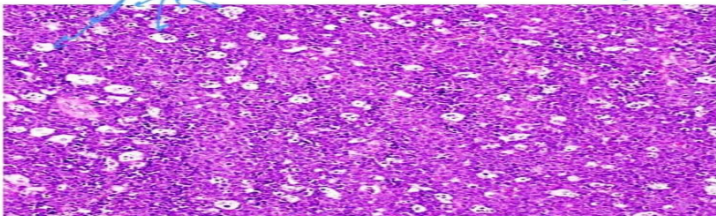
A. fever

B. **Chronic abdominal pain** ✓

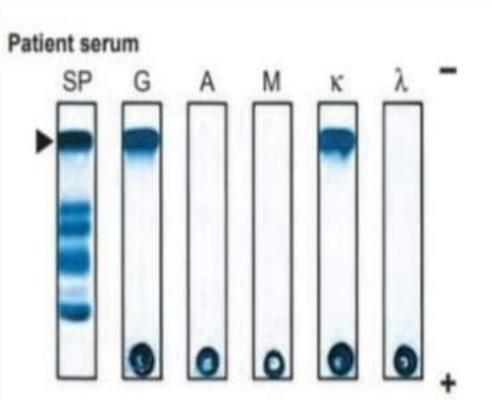
C. Post surgery

Burkitt Lymphoma

- medium sized lymphocytes
- spaces!!! → star-shaped → Quick developing areas

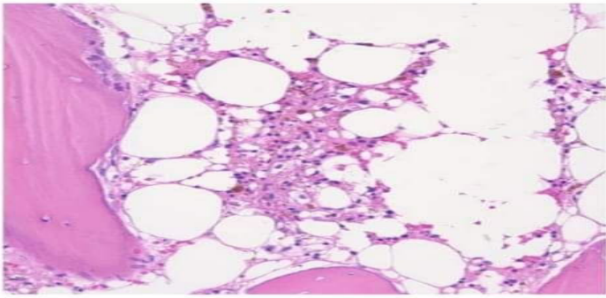


ML, IgG, K

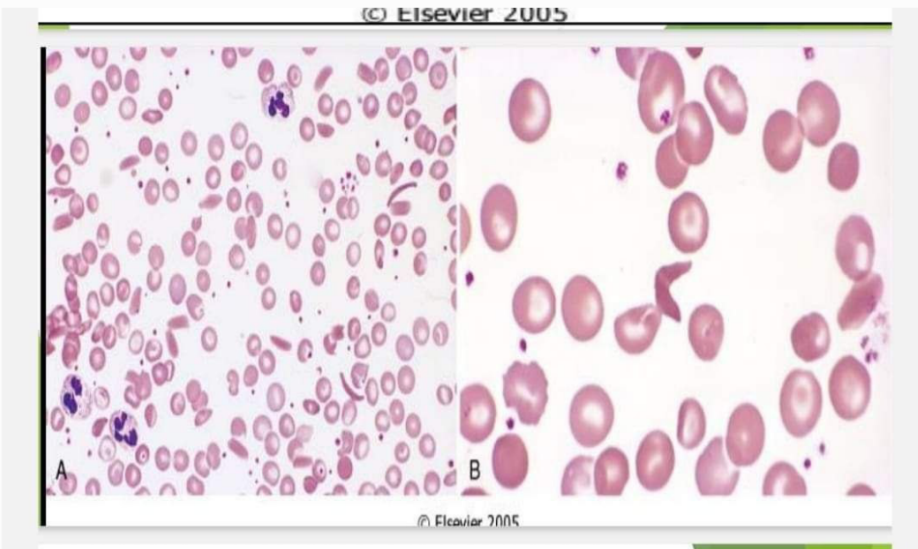


Convert to active in case of? **Anemia**

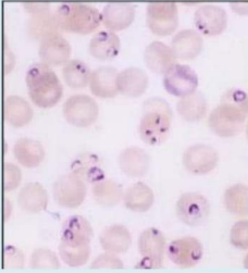
Yellow bone marrow



Sickle cell anemia

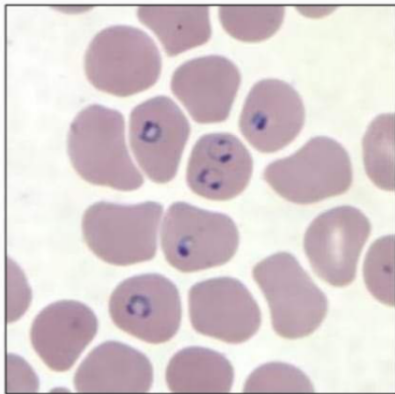


14. this blood film reflect the following disease?



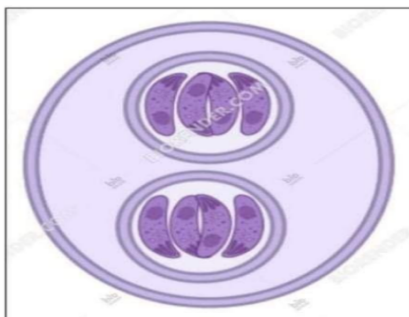
- Select one:
- a. Toxoplasmosis.
 - b. Babesiosis.
 - c. Malaria.
 - d. Lashrnaniasis.
 - e. Typhoid fever.

Plasmodium falciparum



Elephantiasis

Toxoplasma gondii



Oocyst

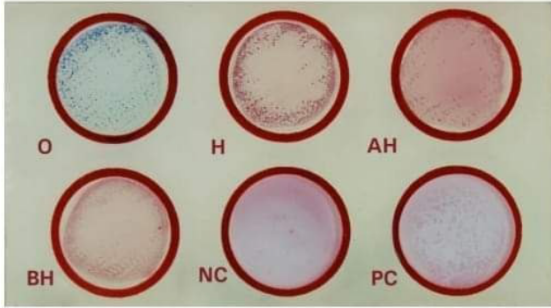
agdi

Shigella colorless colonies without black centers



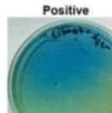
Lactose fer
pink to red

For what? **Salmonellosis**



Citrate Utilization Test

to determine bacterial ability to utilize citrate as the sole source of carbon



Brucellosis

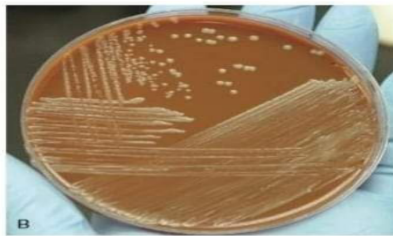
Diagnosis

They grow on blood and serum agars

Enriched agars including selenite F or infusion base agar are used to culture *Brucella*

Incubation plates should be held for a minimum of 7 days.

Colony morphology: colonies appear small, smooth, translucent, mucoid, and slightly yellow and firm after at least 48 hours of incubation.



Yersinia pestis

Stain



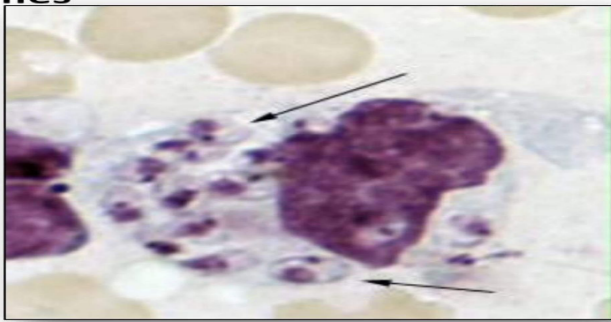
Giemsa staining

yersinia pestis

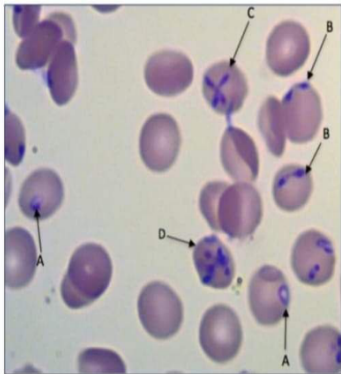
Motility: n



Non-Motile

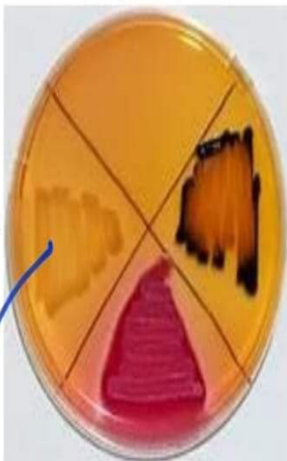


Amastigote of leishmania 10



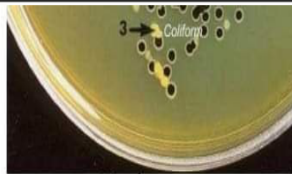
Babesia

dgd



Shigella: colorless colonies without black centers

Lactose fermenter flora:



Hektoen enteric agar

Salmonella: colorless colonies with black centers