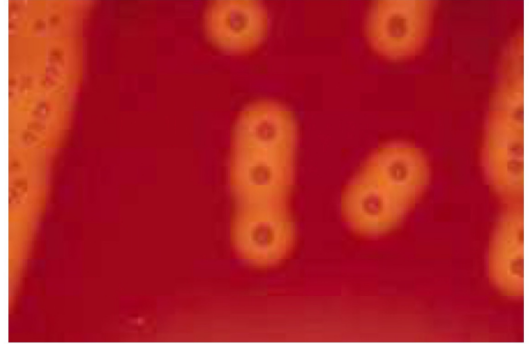
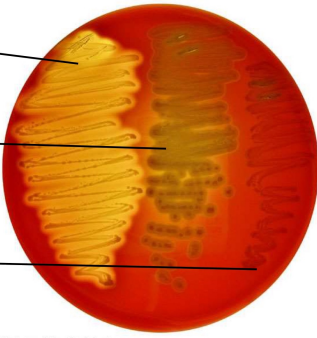


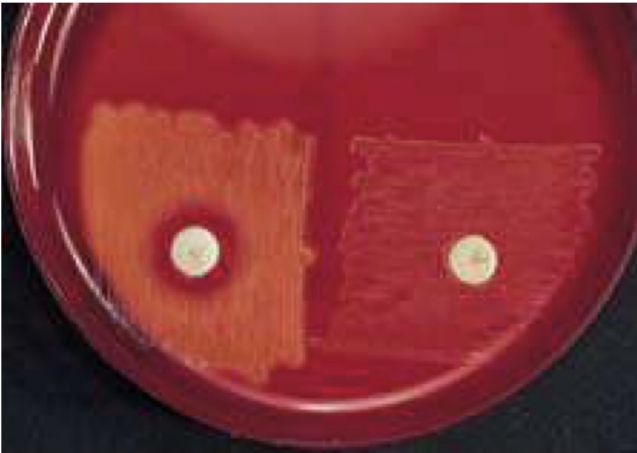
β -hemolysis
(Group A streptococci)

α -hemolysis

γ -hemolysis



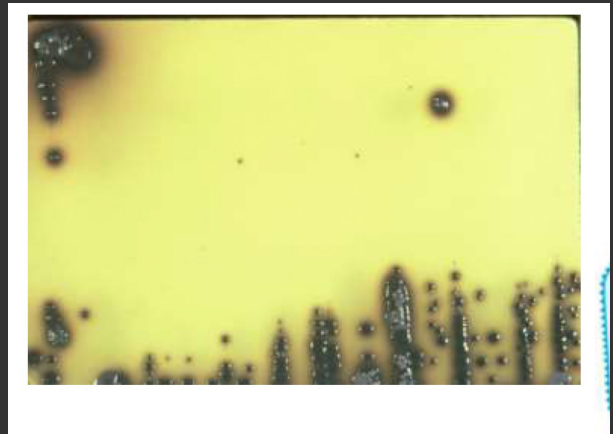
Group A streptococcus



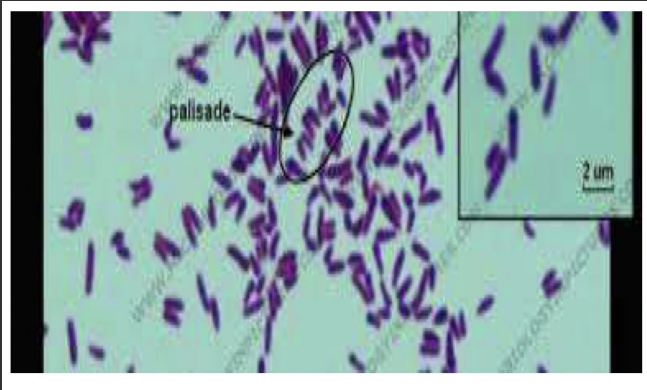
Group A streptococci is susceptible to bacitracin disk (left) the right shows resistance.



Grayish black colonies

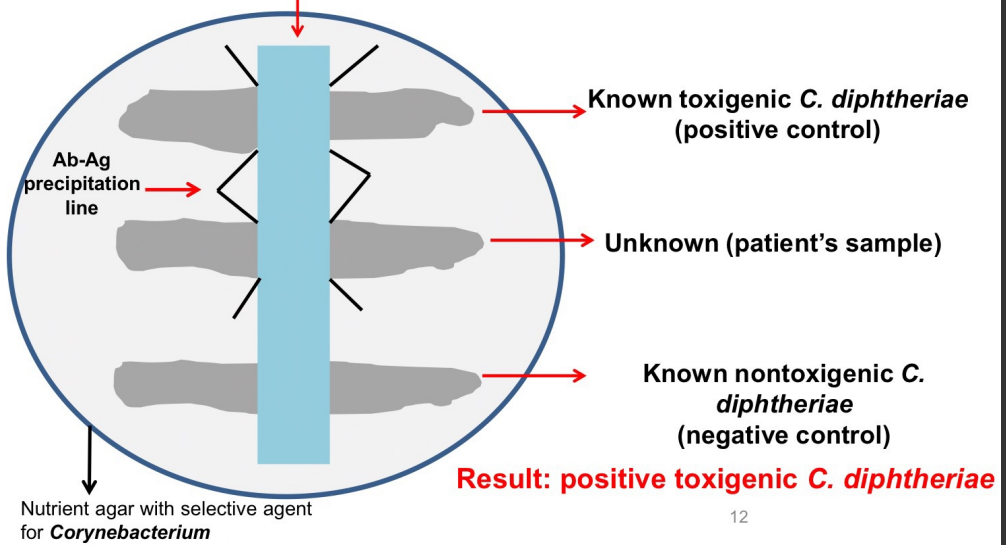


C. Diphtheria



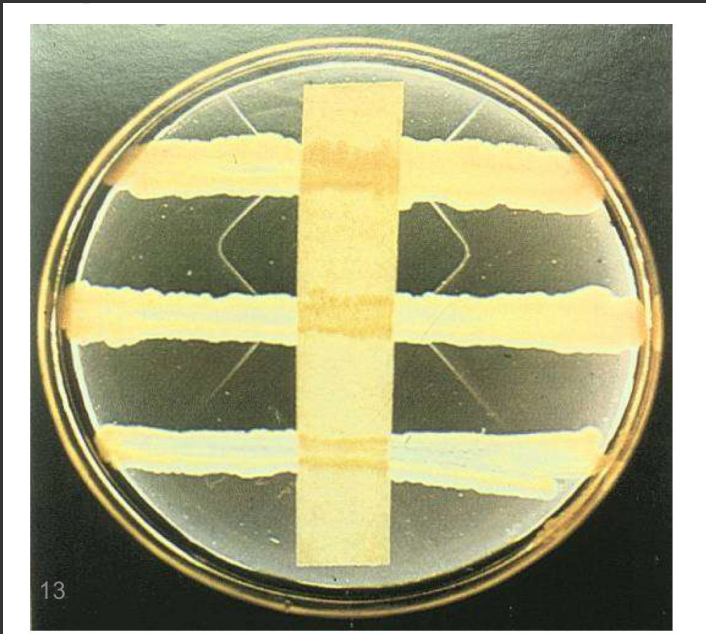
Elek's test: rapid diagnosis (16-24 hrs)

Sterile filter paper with *C. diphtheriae* antitoxin

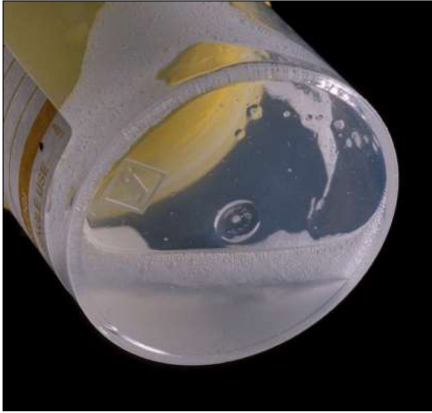


12

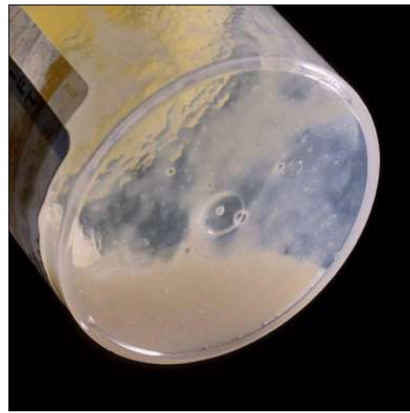
C.Diphtheria



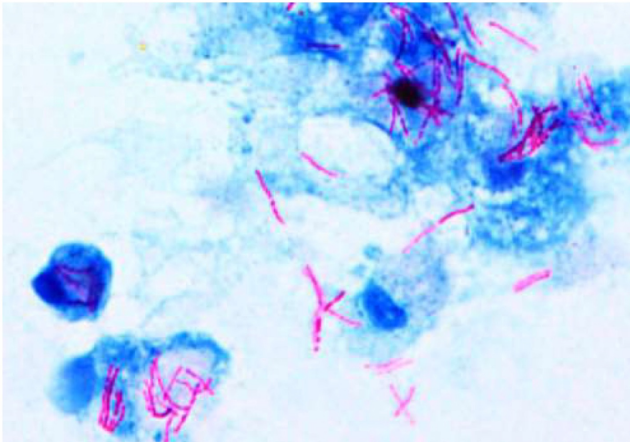
Lower respiratory infections Example: T.B



Poor quality sputum



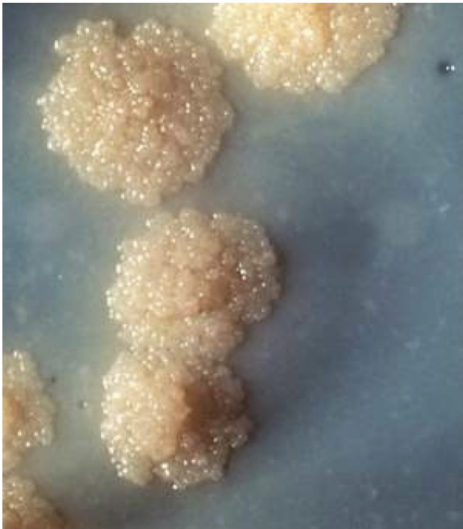
Better quality



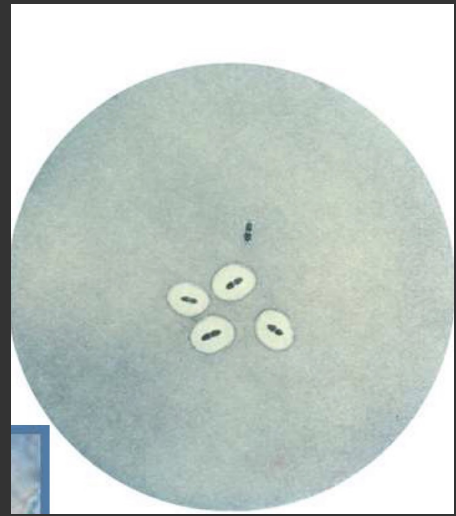
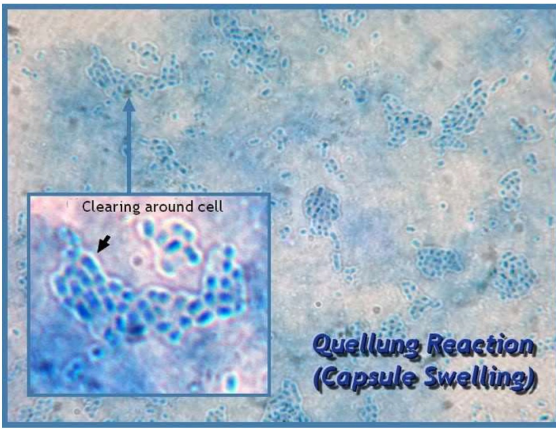
Tuberculosis lower respiratory infection

Tuberculosis

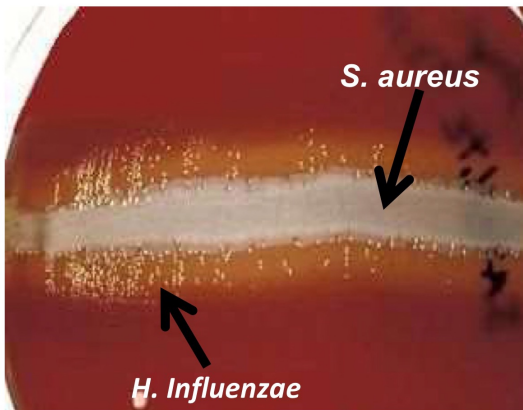
L J agar



M.tuberculosis
colonies



H. Influenzae



Bordetella pertussis

