



MicroBiology Archive

Final - ٢٩٦



Done By:

Raghad Abu Khalaf

{ بِسْمِ اللّٰهِ الرَّحْمٰنِ الرَّحِیْمِ }

1- The host in which non sexual reproduction take place:

- A- Intermediate host
- B- Definitive host
- C- Reservoir host
- D- Asymptotic host
- E- Primary host

Answer: A

2- The type of parasite that use pinocytosis:

- A- Ciliates
- B- Some flagellates
- C- Amoebae
- D- Sporozoa
- E- Coccidia

Answer: D

3- Organism that not cause any disease:

Answer: Coprozoic

4- Parasite found in other host different from its normal host:

Answer : Accidental

5- The infective stage of malaria:

- A- Sporozoites
- B- Merozoite
- C- Schizont
- D- Trophozoite

Answer: A

6- All the following are true about diagnosis of fungi, except:

- A- Culture the yeast in 10 C
- B- Culture the mold in 20 C

C- KOH

D- Gram stain

Answer: A

7- All of the following are true about fungi, except:

A- Have cell wall consists of chitin

B- Their cell membrane contain cholesterol

Answer: B

8- One of the following is example of fungi:

Answer: Mushroom

9- The specimen can be preserved in formalin:

A- 10%

B- 20%

Answer: A

10- All the following are true about sputum examination, except:

A- Purulent

B- Bloody

C- Add on sputum sample equal volume of NaOH

D- Add on sputum sample equal volume of NaCl

Answer: D

11- In stool technique for counting number of egg 53, how many egg in one gram of stool:

A- 5300

B- 10600

C- .25

D- 4

Answer: A

12- Regarding concentration method, the flotation of egg and cysts use solution of gravity:

A- High

B- Moderate

C- Low

Answer: A

13- Hemagglutinin is the receptor for:

A- COVID-19

B- HIV

C- Influenza virus

Answer: C

14- Viropexis:

A- Release virus with plasma membrane

B- Endocytosis

Answer: B

15- Release the viral content:

A- Uncoating

B- Assembly

C- Replication

D- Penetration

Answer: A

16- The correct order about viral life cycle:

A- Attachment-Uncoating-Penetration-Biosynthesis-Assembly-Release

B- Penetration- Biosynthesis- Assembly- Uncoating-Attachment-Release

C- Attachment -Penetration -Uncoating – Biosynthesis- Assembly-Release

D- Release-Attachment-Uncoating-Biosynthesis-Assembly-Penetration

Answer: C

17- The type of Nucleic Acid that go directly to ribosome in virus:

A- -ssRNA

B- DsRNA

C- DsDNA

D- +ssRNA

Answer: D

18- The process by which get dsDNA from ssRNA:

A- Replicate

B- Reverse transcriptase

C- Chemokines

Answer: B

19- The enzyme that used in – ssRNA:

A- DNA dependent DNA polymerase

B- DNA independent DNA polymerase

C- RNA dependent RNA polymerase

D- RNA independent RNA polymerase

Answer: C

20 - Neocapsid:

A- Capsid + genome

B- Capsid

Answer: A

21- The directly surrounding of Nucleic Acid in virus:

A- Capsid

B- Lipid envelope

C- All of above

Answer: A

22- Viral virulence depends in:

A- Dose

B- Virus strain

C- Host factor

D- Inoculation rote

E- All of above

Answer: E

23- Virus that enter in skin penetration:

- A- Rotavirus
- B- Adenovirus
- C- Influenza
- D- Rabies
- E- HIV

Answer: D

24- Virus associated with negri bodies:

Answer: Rabies

25- All of the following are true about acute infection, except:

- A- The patient are asymptomatic
- B- Develops suddenly
- C- Continues for a long time

Answer: A

26- False regarding hepatitis B:

- A- Its persistent chronic infection
- B- Mild or no clinical symptoms may be evident
- C- Cell continues to survive despite viral infection
- D- Replication at high rate with positive serological test
- E- People may able to transmit germ to other

Answer: D

27- False regarding HSV-1:

- A- Virus may lays dormant in extrachromosomal circular DNA
- B- PCR always Positive

Answer: B

28- In Eliesa we add:

Answer: Enzyme

28- HIV is example on:

- A- Slow chronic infection
- B- Slow persistent infection
- C- Chronic persistent infection
- D- Latent persistent infection
- E- Acute infection

Answer: B

30- In sandwich Elisa the well coated with:

- A- Antibody
- B- Antigen
- C- Antibody & Antigen

Answer: A

31- The positive results in complement fixation test:

- A- No hemolysis of RBC with blood points
- B- Hemolysis of RBC

Answer: A

32- True about Electron microscopy:

- A- Expensive equipment
- B- Expensive maintenance
- C- Require experience
- D- Large room
- E- All of above

Answer: E

33- The magnification used for viruses:

- A- 60000
- B- 1200
- C- 2000

Answer: A

34 - Virus has haemagglutinin protein is surface :

A- Influenza

B- HIV

C- HSV

Answer: A

35- All the following true regarding oncovirus, except:

A- Rb is tumor-suppressor gene

B- Insertion of viral gene within tumor suppressor gene lead to its inactivation

C- Insertion of viral gene close to proto-oncogene lead to its activation

E- Epstein-Barr virus cause Kaposi sarcoma

Answer:

36- All the following are true about trophozoite, except:

A- Make budding

B- Has pseudopodia

C- Has one nucleus

Answer: A

37- Patient came to the hospital with the following symptoms: diarrhea, abdominal pain and vomiting, you suspect that its Amoebae, choose the wrong

A- Found cysts with 4 nucleus in stool

B- Infection stage because of seen of trophozote in stool

Answer: A

38- The cause of flask shape ulcer:

Answer: E. histolytica

39-All the following are complications of E. histolytica, except:

A- Liver

B- Skin

C- Lung

D- Brain

E- Urinary tract

Answer: E

40 - Parasite found in liver:

A- Fasciola gignatica

B- Fasciolopsis buski

Answer: A

41- Segmentina is used for:

A- Fasciola gignatica

B- Fasciolopsis buski

C- Diphyllbothrium latum

Answer: B

42- The parasite that infected by ingestion of cyst larvae:

A- Ancylostoma Duodenale

B- Necator Americanus

C- Strongyloides Stercoralis

D- Trichinella Spiralis

Answer: D

43- The infective stage of fasciola gignatica:

A- Cercira

B- Encycted metacercaria

C- Sporocyst

D- Redia

E- Miracidium

Answer: B

44- One of the following come from undercooked pigs

A- Fasciolopsis Buski

B- Fasciola Gignatica

C- Loa Loa

Answer: A

45- Suolex is:

A- Head

B- Neck

Answer: A

46- All the following are true, except:

Answer: Cestodes have elementary tract

47- Cyclop is related to the life cycle of:

- A- Diphyllbothrium latum
- B- Tenia solium
- C- Tenia segenata

Answer: A

48- Pernicious anemia associated with

- A- Diphyllbothrium latum
- B- Tenia solium
- C- Tenia segenata

Answer: A

49- Gravid segment detach in group

- A- Tenia solium
- B- Tenia segenata
- C- Diphyllbothrium latum

Answer: A

50- The parasite in which man be intermediate host:

- A- Diphyllbothrium latum
- B- Tenia solium
- C- Tenia segenata

Answer: B

51- Cysticercosis occurs in:

- A- Diphyllbothrium latum
- B- Tenia solium
- C- Tenia segenata

Answer: B

52- Infection occurs through cell penetration:

- A- Enterobus

B- Necator Americanus

Answer: B

53- Main important step in gram staining:

Answer: Crystal / acetone not sure

54- The parasite that passes through the human intestine without causing any symptoms:

Answer: Coprozoic parasite

55- The genome that the host cell uses it directly as mRNA translation is:

A- + ssRNA

B- -ssRNA

C- dsRNA

D- dsDNA

Answer: A

56- The infection stage of Plasmodium:

A- Schizont

B- Trophozite

C- Sporozoite

Answer: C

57- Female Culex mosquitoes is intermediate host for:

A- Wuchereria bancrofti

B- Brugia malayi

C- Loa loa

D- Onchocerca volvulus

Answer: A

58- The parasite that found in skin nodules is:

A- Wuchereria bancrofti

B- Brugia malayi

C- Loa loa

D- Onchocerca volvulus

Answer: D

59- The Lugol's iodine is used to:

A- Glycogen vacuole in cyst

B- Sputum

Answer: A

60- The incorrect about sputum:

A- Add on a sputum sample equal volume of NaOH to dissolve the mucus.

B- Centrifuge at 200xg for 5 minutes, then examine the sediment

C- Add on a sputum sample equal volume of NaCl to dissolve the mucus

Answer: C

61- Main important step in gram staining:

Answer: Crystal violet & Gram iodine

62- Symbiotic:

Answer: Bacteria grow in partnership with other living organism

63- Ingestion eggs:

Answer: Ascaris

64- Eye worm:

Answer: Loa loa

65- Body temperature for growth of yeast:

A- 10C

B- 37C

Answer: B

66- Acid fast stain (Counter stain):

Answer: Methylene blue

67- Parasite that feed by pinocytosis :

A- Ciliates

B- Some flagellates

C- Amoeba

D- Sporozoa

Answer: D

68- All of the following are true about oncovirus, except:

A- RNA herpes virus

B- Insertion of viral gene close to the protooncogene leads to activation

C- Insertion of viral gene within the tumor suppressor gene leads to inactivation

Answer: A

69- In the complement fixation test:

Answer: Positive if no hemolysis

70- Parasite cause Pernicious anaemia :

Answer: Diphyllobothrium

71- One is INCORRECT about HBV:

Answer: High rate of replication

72- Virulence depends on:

A- Dose

B- Genetics

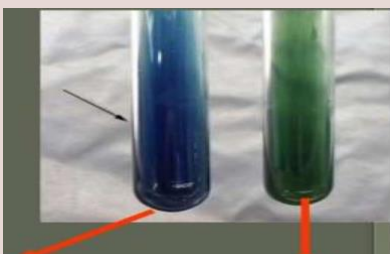
C- Inoculation route (portal of entry)

D- Host factors

E- All of the above

Answer: E

73- The name of the test below:



A- Proskauer Test

B- Citrate Test

C- Urease Test

D- Sugar fermentation Test

Answer: B

74- The name of the tapeworm below:



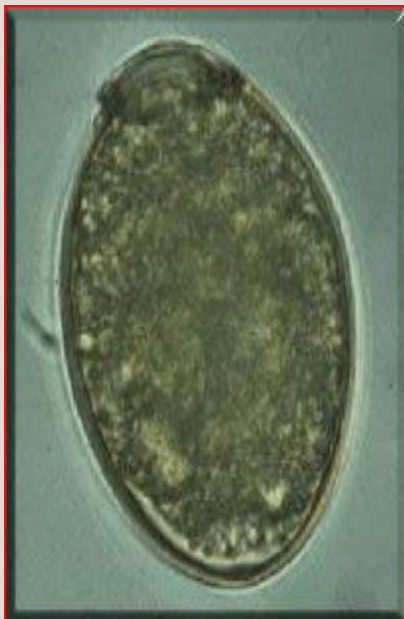
A- Taenia Solium

B- Taenia Saginata

C- Diphyllbothrium latum

Answer: B

75- The name of the Egg below is:



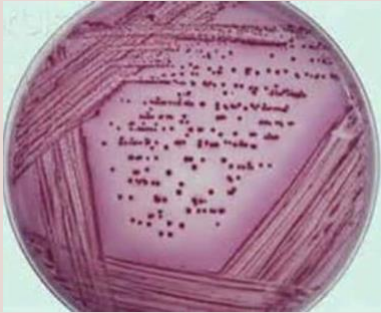
A- Coracidium

B- Diphyllbothrium latum

C- T. Saginata

Answer: B

76) Which of the following is true regarding the picture:



A- Gram negative bacilli

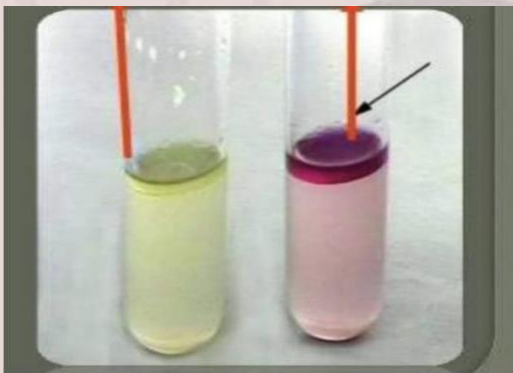
B- Gram positive bacilli

C- Gram negative cocci

D- Gram positive cocci

Answer: A

77) The pink tube is considered as:



A- Positive test, Klebsiella

B- Negative test, Klebsiella

C- Positive test, E.coli

D- Negative test, E.coli

Answer: C

78) The egg below is related to:



A- *Capillaria philippinensis*

B- *T. Solium*

C- *Enterobius vermicularis*

Answer: C

79- The true feature according to the photo blow that it is:



A- *Enterobius vermicularis* male

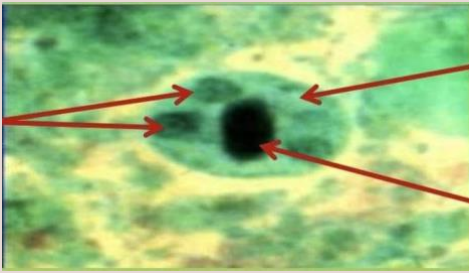
B- Hasnot esophagus

C- Hasnot lips

D- *Enterobius vermicularis* Female

Answer: A

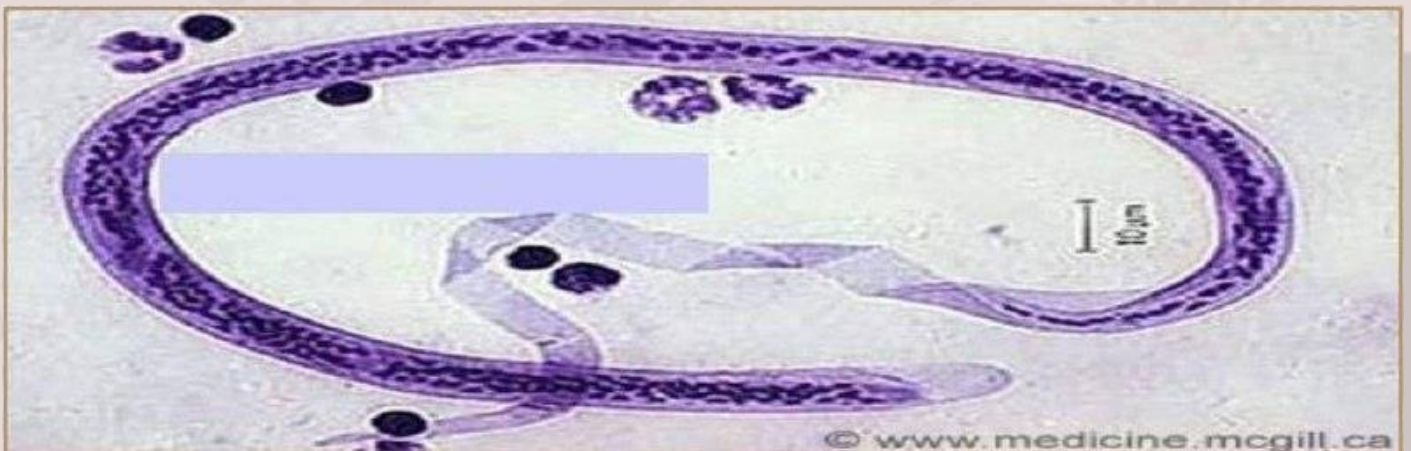
80- All of the following are true according to the photo bellow, except



- A- Contain 4 nuclei
- B- One chromatoid body
- C- Rounded with thin cyst wall
- D- Entamoeba histolytica mature cyst
- E- Glycogen vacuole

Answer: C

81-



Answer: Wuchereria Bancrofti

82-



Answer: *S.mansoni* , Stool

83-



Answer: *S.haematobium* , Urine

84-



Answer: *S.japonicum* , Stool

85-



Answer: T.spiralis

86-



Answer: Trichuris trichiura (The whipworm)

الحمد لله، ما انتهى دربٌ ولا خُتِمَ جهدٌ ولا تمَّ سعيٌّ إلا بفضلِهِ وكرمه .

تحية إكبار وإجلال لمن وصل معنا إلى هنا!

في ظل زنقاتك تذكر: "ما على الإنسان سوى السعي"

يسعى الإنسان ولا ينتظر النتيجة؛ لأنها بأمر الله - عز وجل - ، الإنسان مأجور على سعيه وخطواته ومجاهدته وهذا ما يُريده،

الأجر لا النتيجة

فَوْضَ أُمُورِكَ لِلَّهِ..

ثق بأنه - عز وجل - يقدر لك الخير في كل شيء

{.وَأَنْ لَيْسَ لِلْإِنْسَانِ إِلَّا مَا سَعَى، وَأَنَّ سَعْيَهُ سَوْفَ يُرَى، ثُمَّ يُجْزَاهُ الْجَزَاءَ الْأَوْفَى}

لجنة الطب والجراحة تتمنى لكم كل التوفيق

لا تنسوننا من صالح دعائكم .

