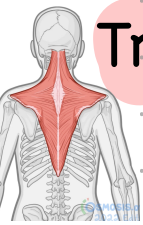
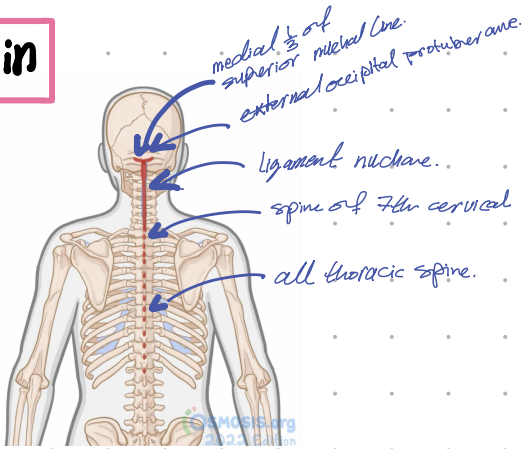


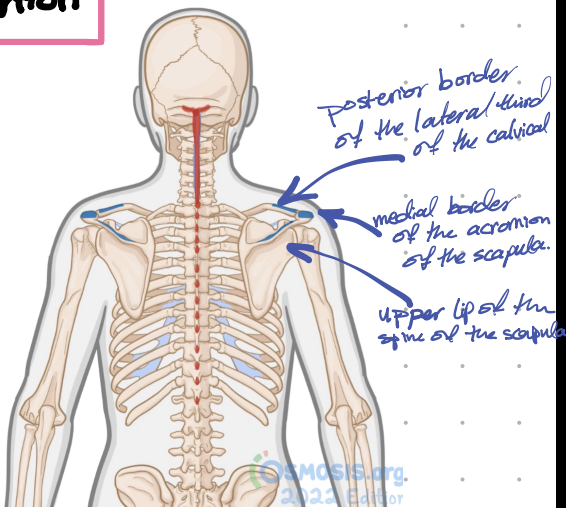
Trapezius



Origin



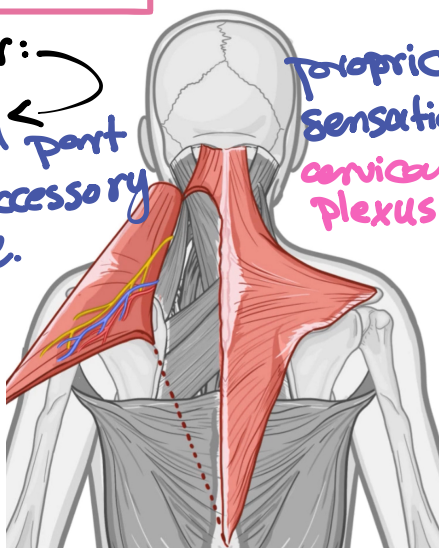
insertion



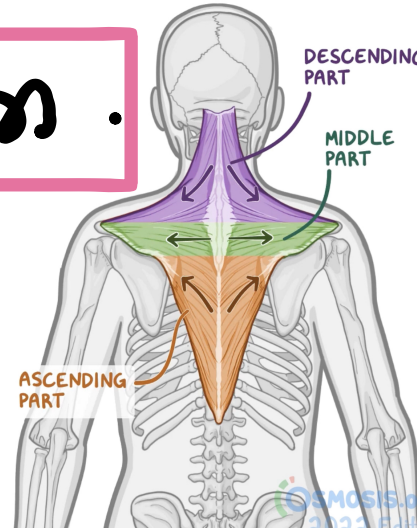
nerve supply

motor: Spinal part of accessory nerve.

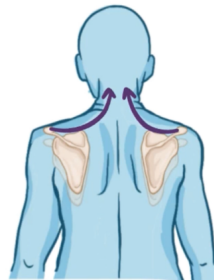
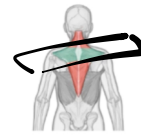
sensory: Proprioceptive Sensation. cervical plexus.



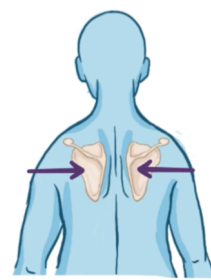
Action



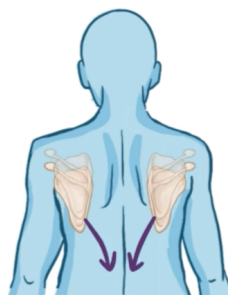
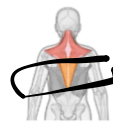
Upper fiber



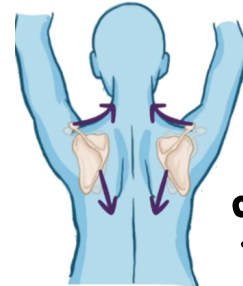
DESCENDING PART ~ ELEVATION of SCAPULA



MIDDLE PART ~ RETRACTS SCAPULA



ASCENDING PART ~ DEPRESSES SCAPULA (LOWERING SHOULDER)



ASCENDING + DESCENDING ~ UPWARD ROTATION of SCAPULA

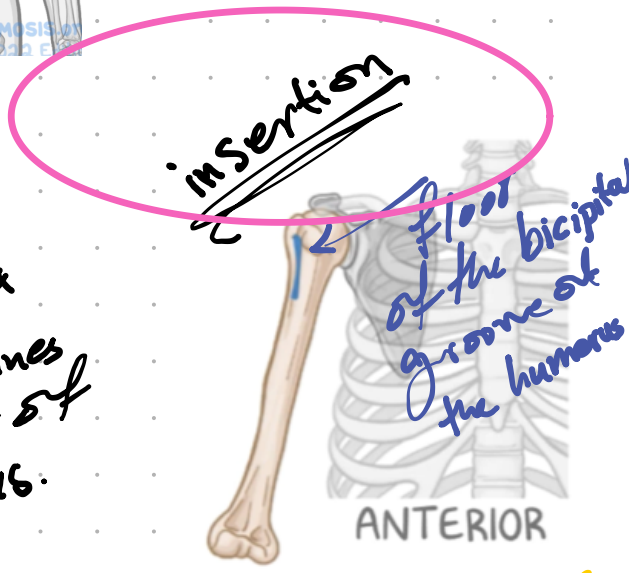
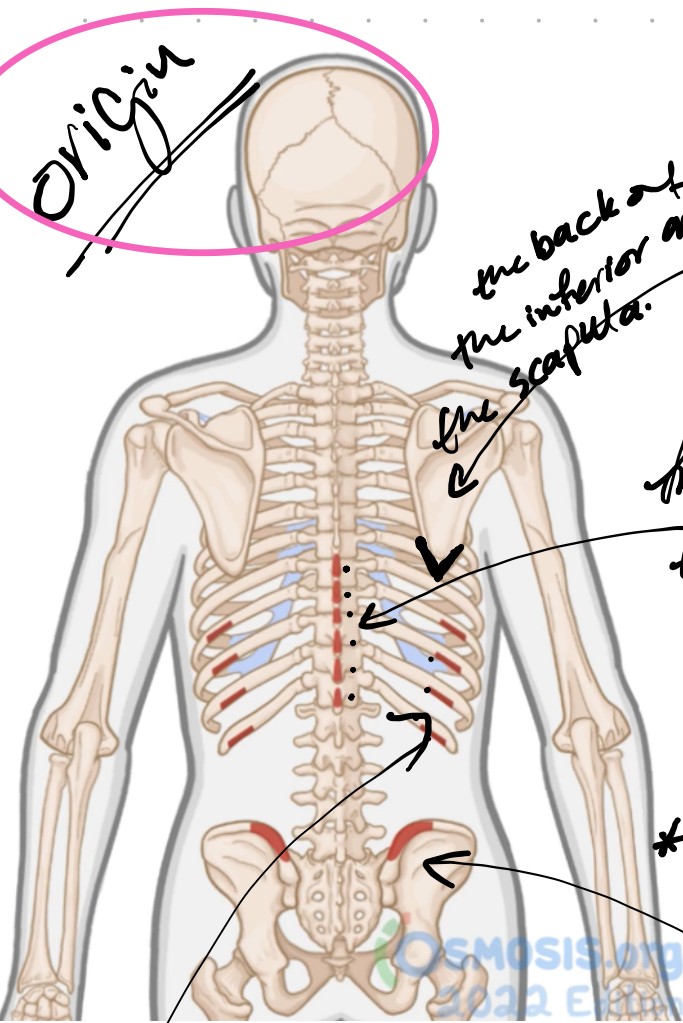
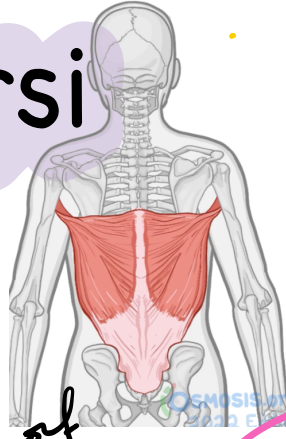
abduction more than 90°

Arises from the skull.

Not supplied by brachial plexus



Latissimus dorsi



Origin

the back of the inferior angle of the scapula.

Insertion

floor of the bicipital groove of the humerus

from the six thoracic spines under cover of the trapezius.

*Lumbar fascia.

the only muscle of the upper limb has pelvic attachment.

the lower three ribs.

posterior part of the outer lip of the iliac crest.

Latissimus Dorsi

teres major 3

behind below in front

Nerve supply: nerve to Latissimus Dorsi [thoracodorsal nerve] (from posterior end of brachial plexus).

Adduction
extension

medial rotation of the arm

pulls the trunk towards the arm

assists in deep expiration (cough).

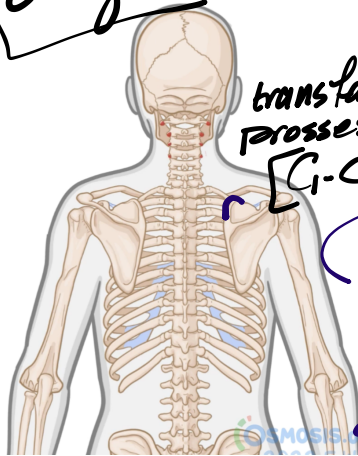
used in swimming.

climbing / gymnastics.

Deep muscle of the back

Levator scapulae

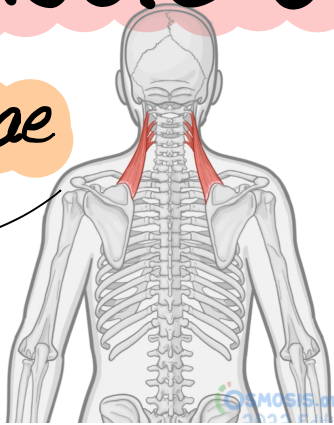
origin



transverse
processes from
[C1-C4]

Insertion

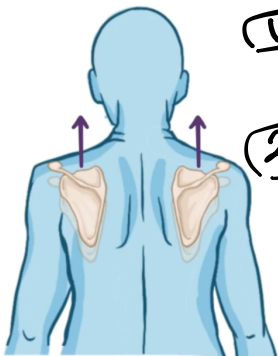
dorsal surface of
medial border of the
scapula
from superior angle
to the root of the spine



Nerve supply:

- ① Nerve to the levator scapula.
cervical plexus from C3, C4
- ② dorsal scapula nerve (rhomboid nerve) C5

Action



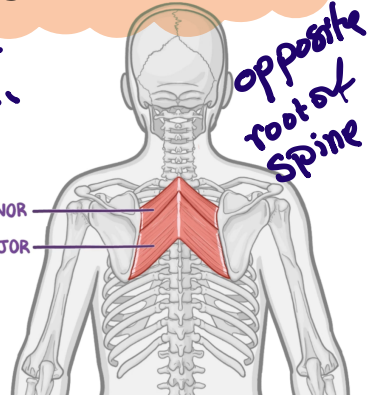
(1) Elevate the
scapula

(2) Tints the neck to the same side
when shoulder fixed.

Rhomboides minor

origin
C7-T1

RHOMBOID MINOR
RHOMBOID MAJOR

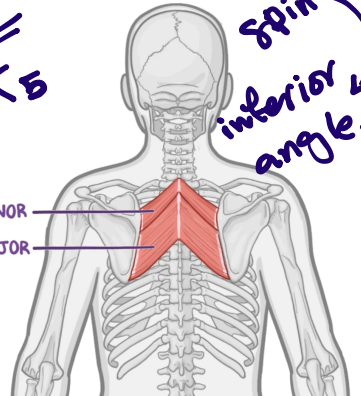


opposite
root of
spine

Rhomboides major

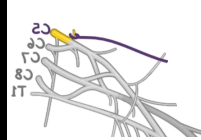
origin
T2-T5

RHOMBOID MINOR
RHOMBOID MAJOR



spin
inferior
angle

Retraction
of the scapula



INNervation
* DORSAL SCAPULAR
NERVE (C4-C5)