

# زوح

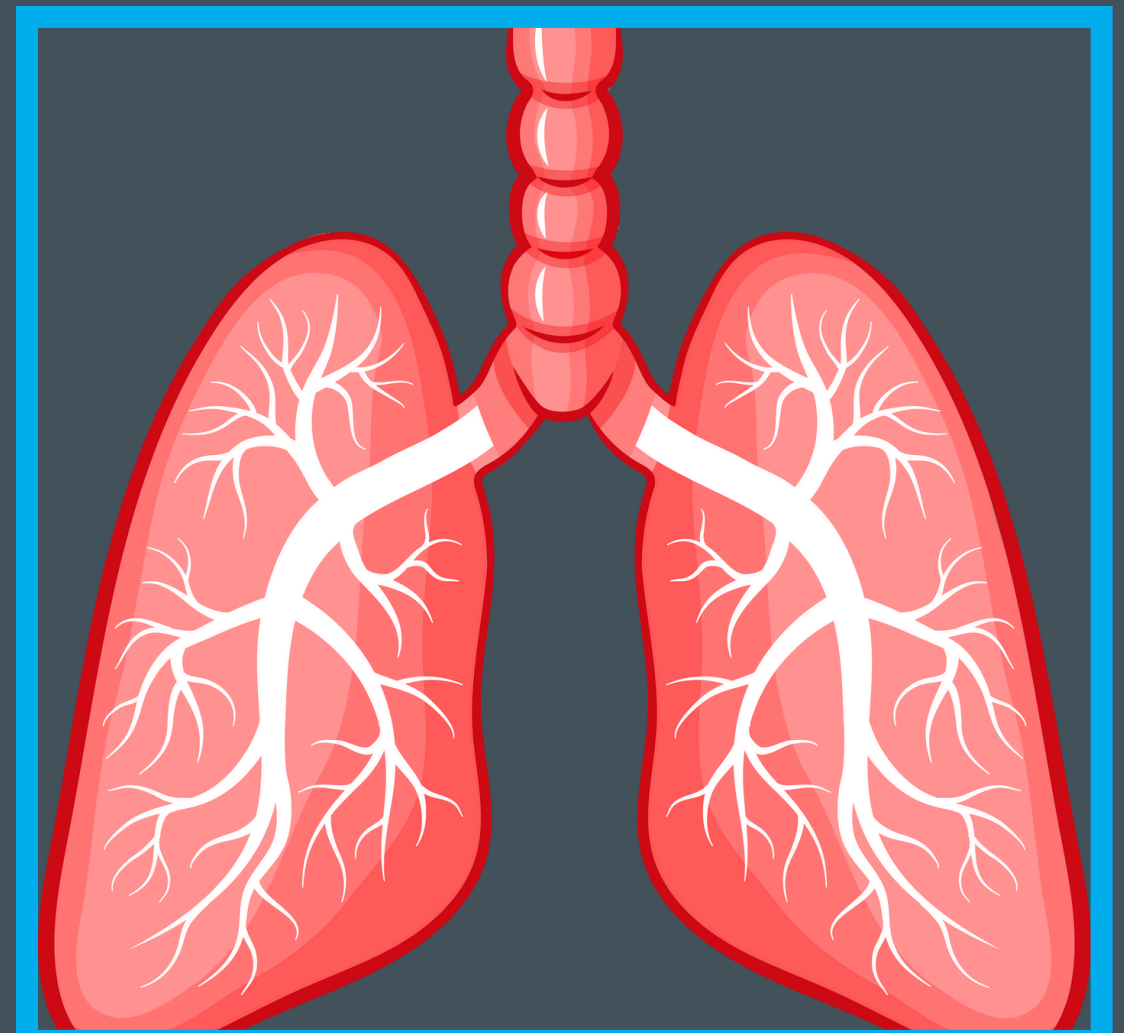
Rs LAB

Done By:

Razan Rawajbeh

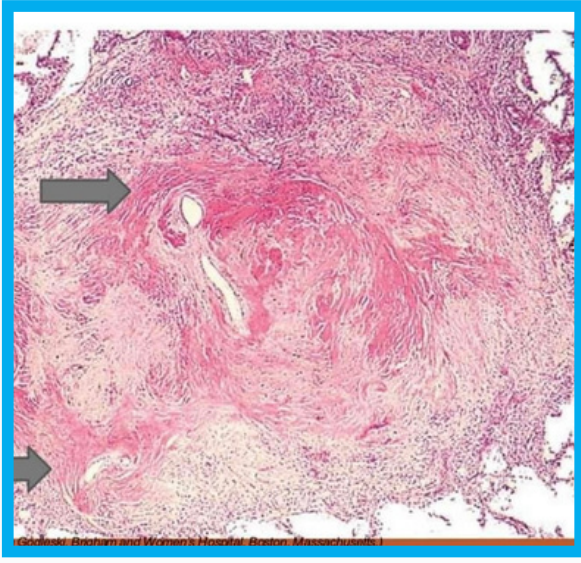
Designed by

Shahd Alayouben





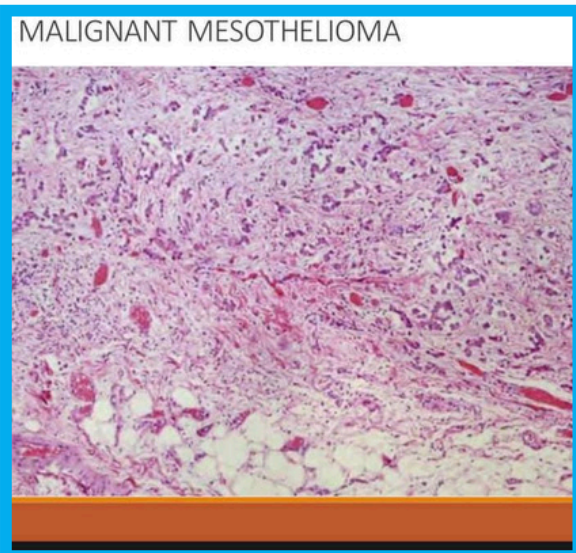
1) what disease is shown in the figure?



- A) Asbestosis
- B) Silicosis

Ans: B

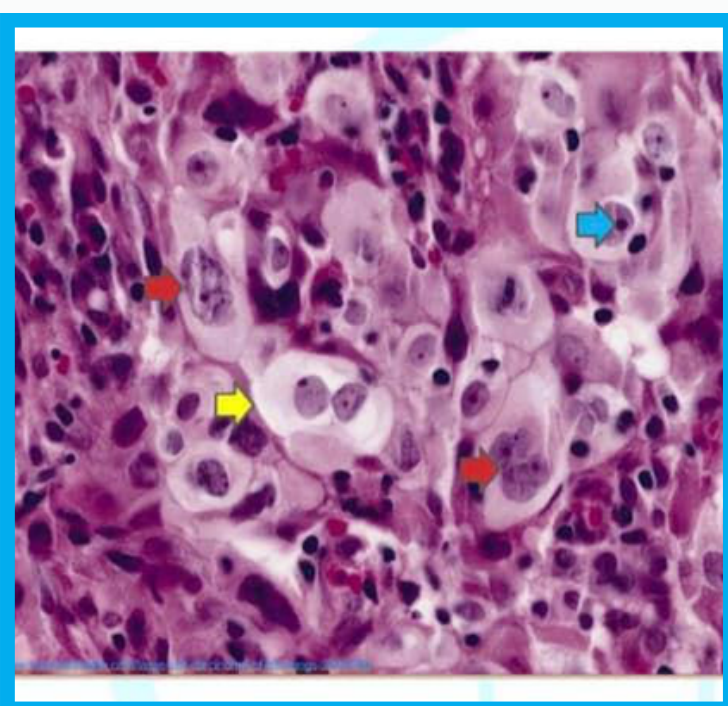
2) Not Correct?



- A) malignant tumour
- B) common in visceral pleura
- C) happen in the peritoneum and pericardium
- D) relative of asbestos worker not negative affected with this disease
- E) increase the risk of developing malignant mesothelioma with asbestos exposure and cigarette smoking

Ans:

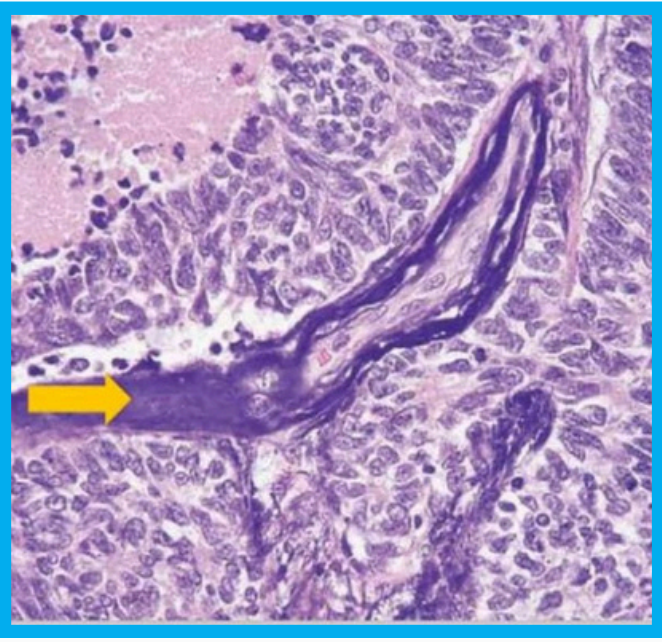
3) Not correct about it ?



- A) Are undifferentiated tumour
- B) malignant epithelial tumors.
- C) has cytologic features of small cell carcinoma
- D) have no glandular or squamous differentiation.
- E) Large nuclei, prominent nucleoli, and a moderate amount of cytoplasm

Ans: C

#### 4) Not correct?



- A) high mitotic rate
- B) crush artifact
- C) nuclear moulding
- D) high nuclear to cytoplasm ratio
- E) prominent nuclei

Ans:E

#### 5) Can't measure by spirometry ?

- A) inspiratory reserve
- B) expiratory reserve
- C) vital capacity
- D) functional residual capacity

Ans:D

#### 6) Non specific test ?

- A) vital capacity
- B) lung total capacity
- C) functional residual

Ans:A

#### 7) Total lung capacity (TLC) equal ?

- A) 1200
- B) 2200
- C) 3500
- D) 5700
- E) 4500

Ans:D

#### 8) It is the volume of air breathed/minute?

- A) tidal volume
- B) total ventilation
- C) inspiratory reserve
- D) total lung capacity

Ans:B

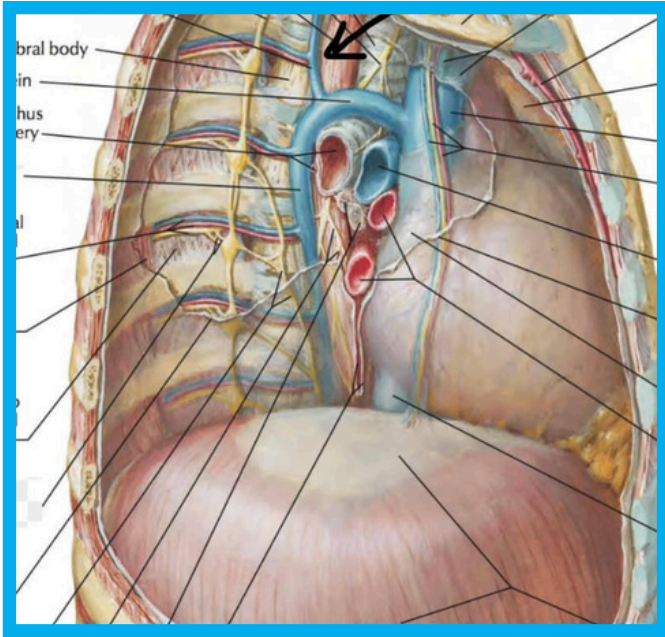
#### 9) Used for calculation of dyspneic index (DI)?

- A) maximum breathing capacity
- B) vital capacity
- C) inspiratory reserve

Ans:A ( ما يعرف شو الخيارات الباقية فعشان هيك حطيت هاي الإجابة )



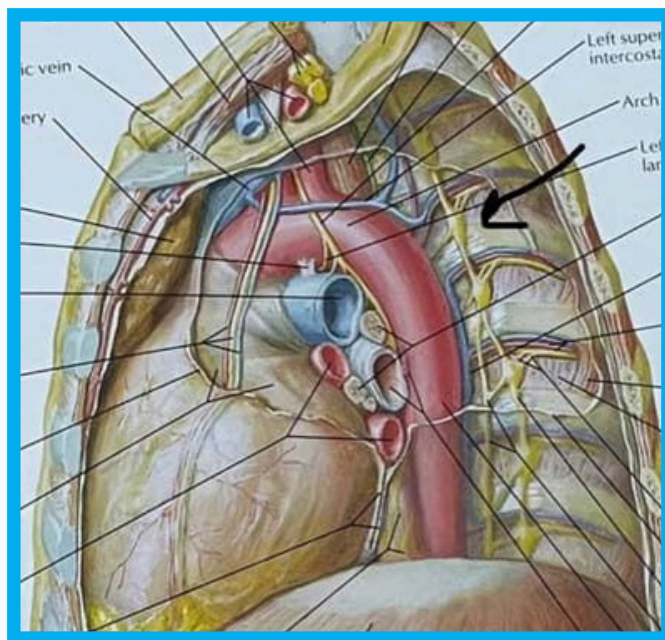
10) what is the pointed structure?



- A) arch of azygous
- B) right superior intercostal
- C) azygous
- D) hemiazygous
- E) brachiocephalic

Ans:

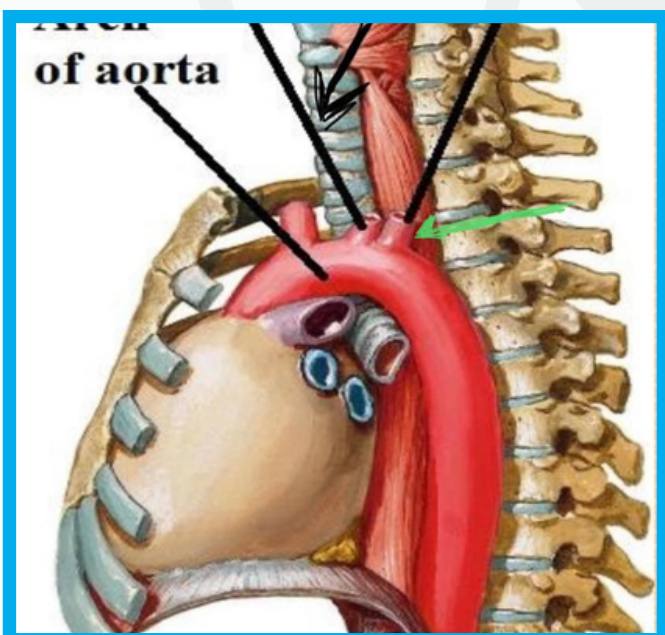
11) Labelled structure?



- A) phrenic n
- B) vagus n
- C) sympathetic trunk
- D) splanchnic n

Ans: C

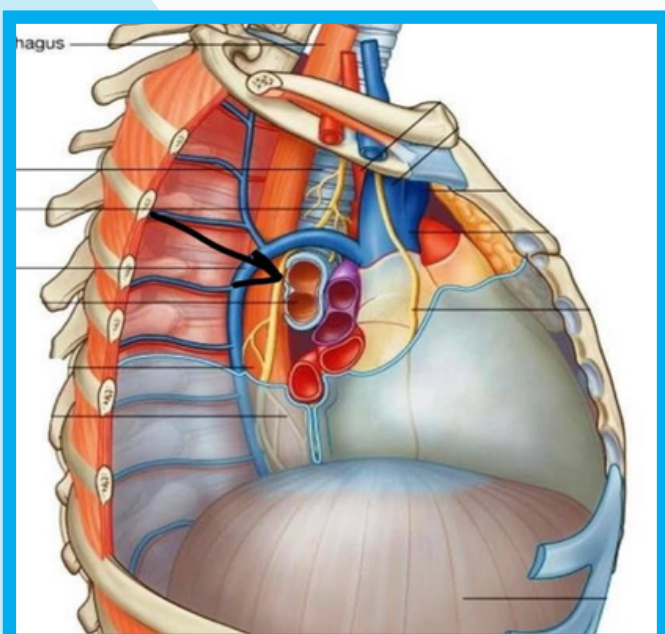
12) The green arrow is pointing to ?



- A) brachiocephalic
- B) left common carotid
- C) left subclavian

Ans: C

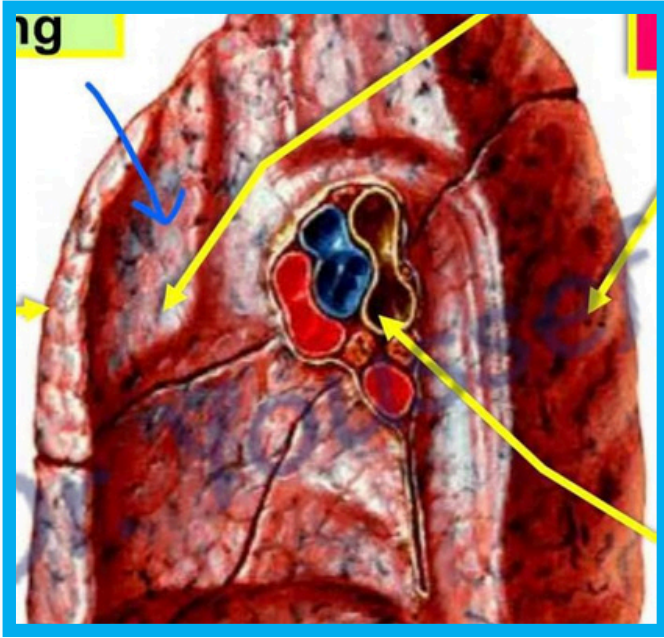
13) Labelled structure?



- A) pulmonary artery
- B) pulmonary vein
- C) bronchus



14) what is the pointed structure?



- A) pericardial impression
- B) pulmonary artery
- C) ascending aorta
- D) SVC

Ans: C

15) This is:



- A) herpes zoster
- B) herpes genitalis
- C) herpes gingivostomatistis

Ans: A

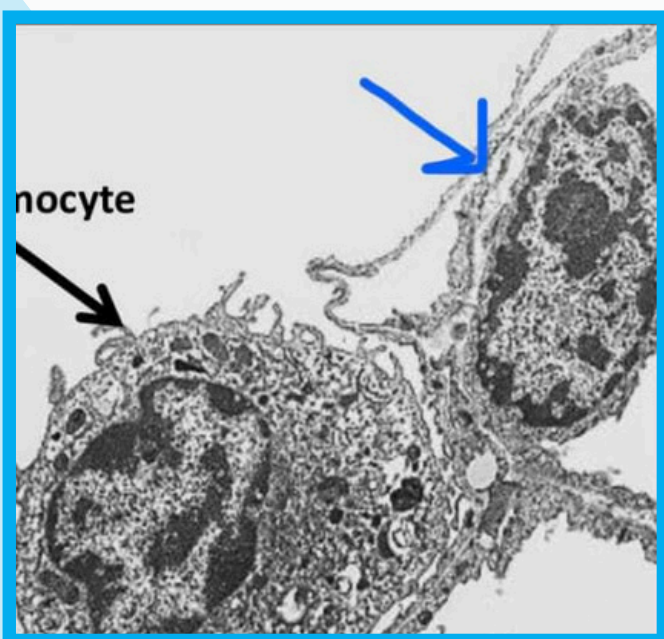
16) Cell type ?



- A) pseudostratified columnar
- B) simple columnar
- C) simple cubical

Ans:

17) what is the pointed structure?



- A) RBC
- B) Dust cell
- C) monocyte
- D) pneumocyte 2
- E) endothelial cell

Ans:



18) Cell?



- A) Clara
- B) pneumocyte 2
- C) pneumocyte 1
- D) cubical cell

Ans: B

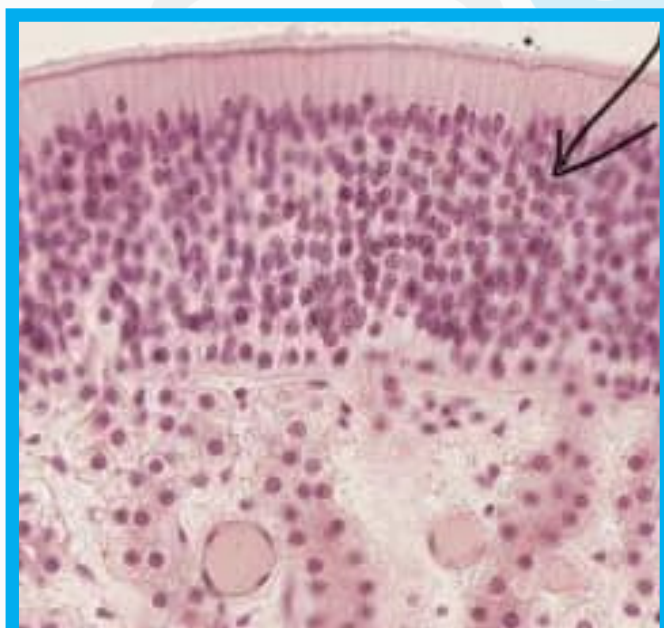
19) what is the structure ?



- A) trachea
- B) intrapulmonary bronchus
- C) bronchiole
- D) extrapulmonary bronchus

Ans:

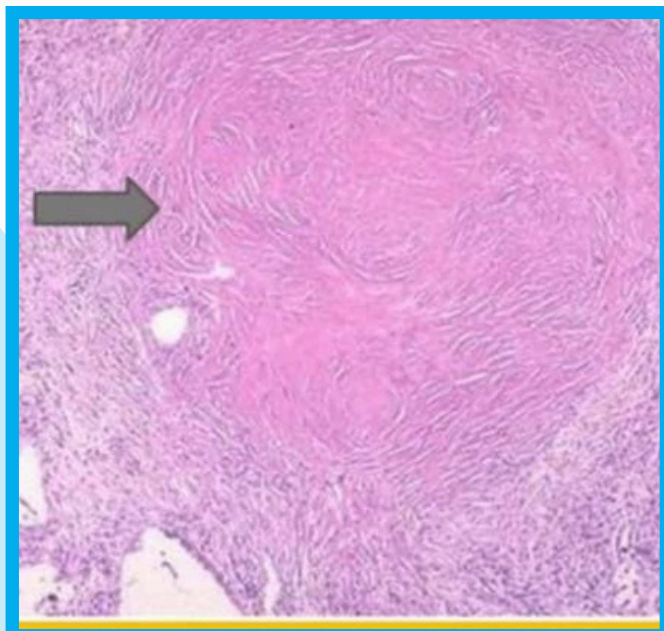
20) Cell type ?



- A) goblet cell
- B) olfactory cell
- C) Clara cell
- D) brush cell

Ans:

21) Found in?



- A) silicosis
- B) asbestos
- C) coal worker
- D) sarcoidosis

Ans: A

22) Histology ?



- A) asteroid
- B) Schaumann body
- C) Curschman
- D) granuloma

Ans: B

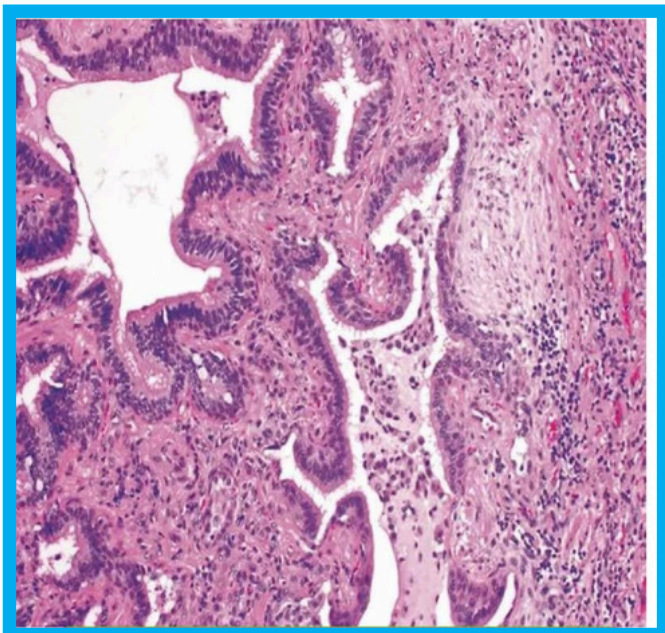


23) Found in ?

- A) silicosis
- B) sarcoidosis
- C) asthma
- D) aspergilloma

Ans: B or (ممکن يكون في خيار ناقص)

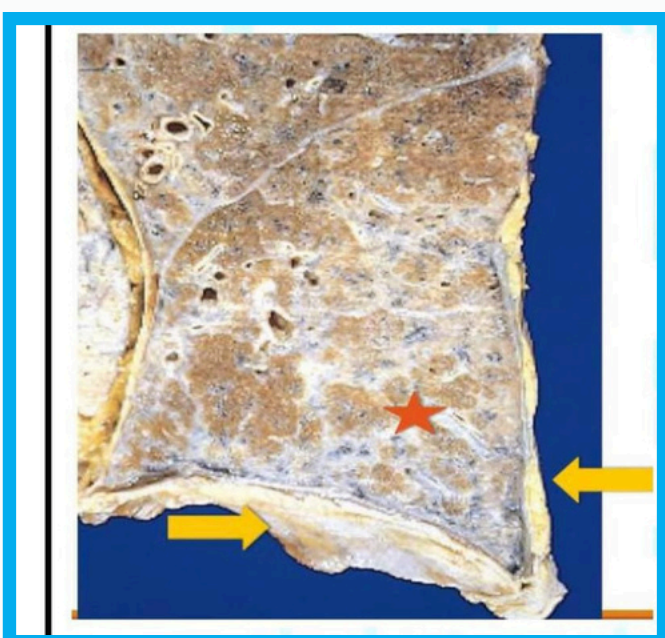
24) Found histopathology one in?



- A) nonspecific interstitial pneumonia
- B) acute interstitial fibrosis
- C) usual interstitial pneumonia
- D) cryptogenic organising pneumonia

Ans: C

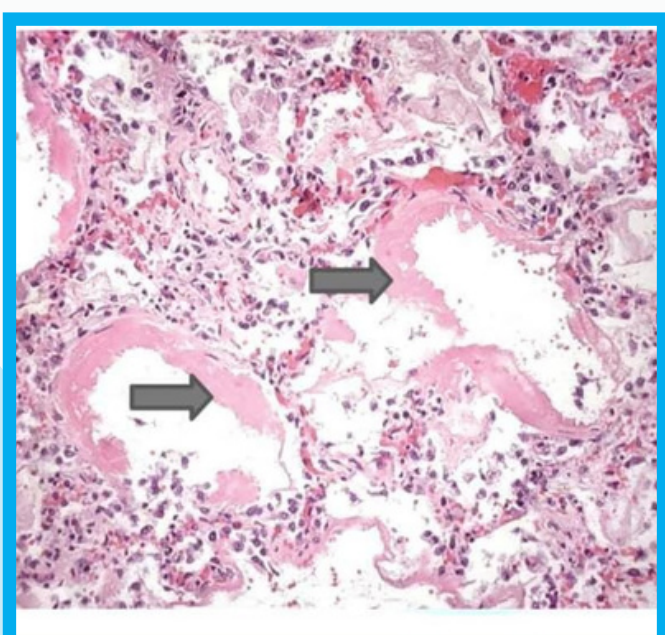
25) What coating?



- A) copper
- B) iron
- C) calcium

Ans: B

26) Lesion age ?



- A) 3 months
- B) 6 months
- C) 1 year
- D) 1 hour
- E) 3-5 days

Ans: E

27) the pointed ligament is :

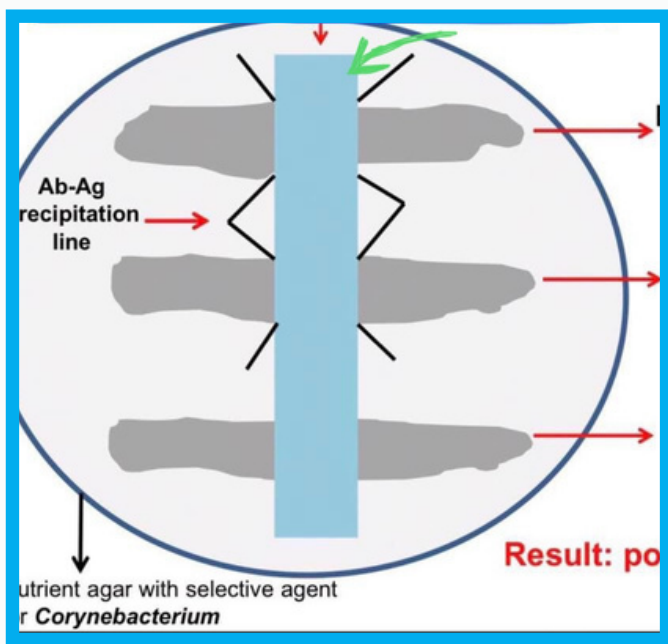


- A) thyroepiglottic ligament
- B) hyoepiglottic ligament
- C) median cricothyroid membrane
- D) quadrangle ligament

Ans: A



28) what is the pointed structure with the green arrow?



- A) nutrient agar
- B) precipitation line
- C) sterile filter paper with c.diphtheria antitoxin
- D) known toxigenic C.diphtheria
- E) known non toxigenic C.diphtheria

Ans:C

29) which of the following is associated with this colony?



- A) H.influenzae
- B) S.pyrogens
- C) C.diphtheria
- D) M.tuberculosis
- E) S.aureus

Ans:C

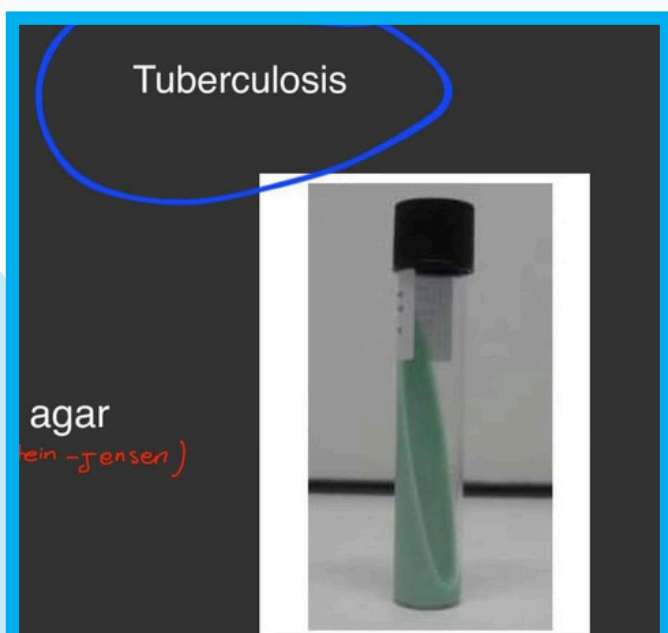
30) The reaction in this microscopic image is associated with?



1. S. pyogenes
2. S. aureus
3. H. influenzae
4. C. diphtheriae
5. M. tuberculosis

Ans: C

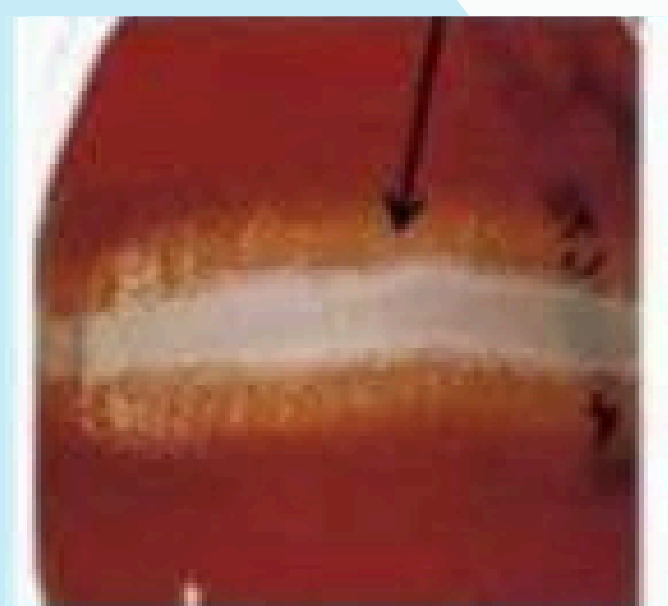
31) We use lowen stain jensen for which of the following bacteria:



- A) mycobacterium tuberculosis
- B) calmydia
- C) c. Diphtheria

Ans:A

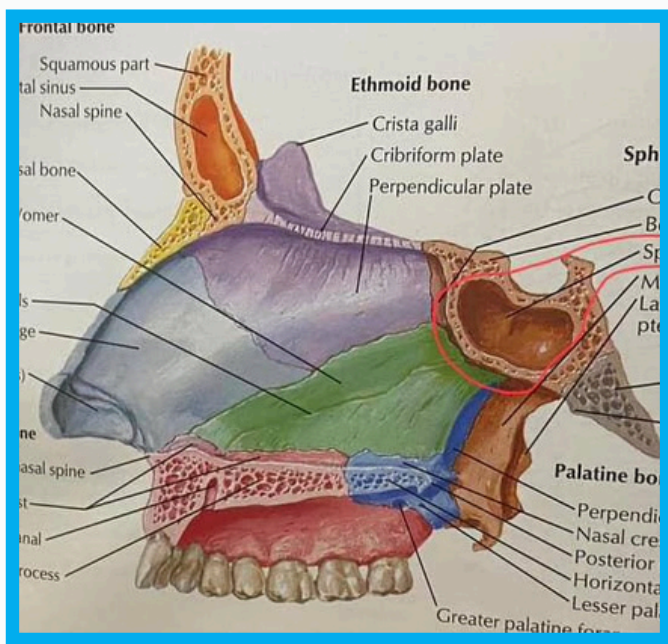
32) Which of the followings shows this phenomenon?



1. M. tuberculosis
2. S. pyogenes
3. H. influenzae
4. E. vermicularis
5. C. diphtheriae



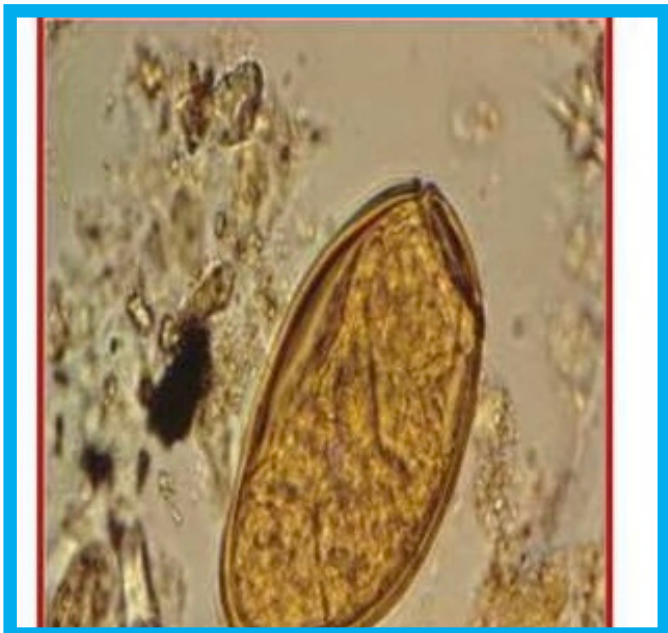
34) this sinus drain to :



- A) superior meatus
- B) sphenoidal recess
- C) middle meatus
- D) superior concha
- E) inferior meatus

Ans:

35) what is the correct?



- A) I.S of paragonimus westermani
- B) D.S of paragonimus westermani
- C) D.s of echinococcus
- D) i.s of echino

Ans: B

36) what is correct?



- A) I.S of paragonimus westermani
- B) D.S of paragonimus westermani
- C) D.s of echinococcus
- D) i.s of echino

Ans: A

37) D is referred to:



- A) fibrous tissue layer
- B) brood capsule
- C) sucker
- D) the inner germinal layer

Ans: B

38) what is correct?

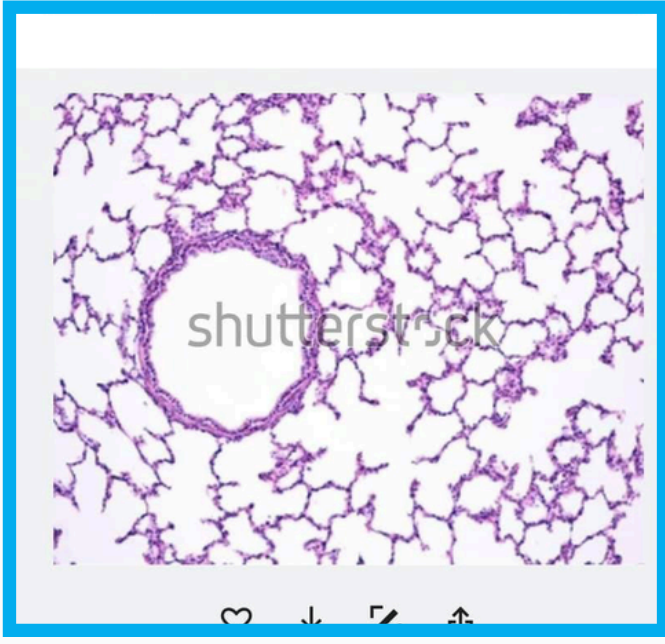


- A) hydatid cyst only
- B) i.s of echino and hydatid cyst
- C) D.s of echino and hydatid cyst

Ans: C ( غالباً هي الإجابة )



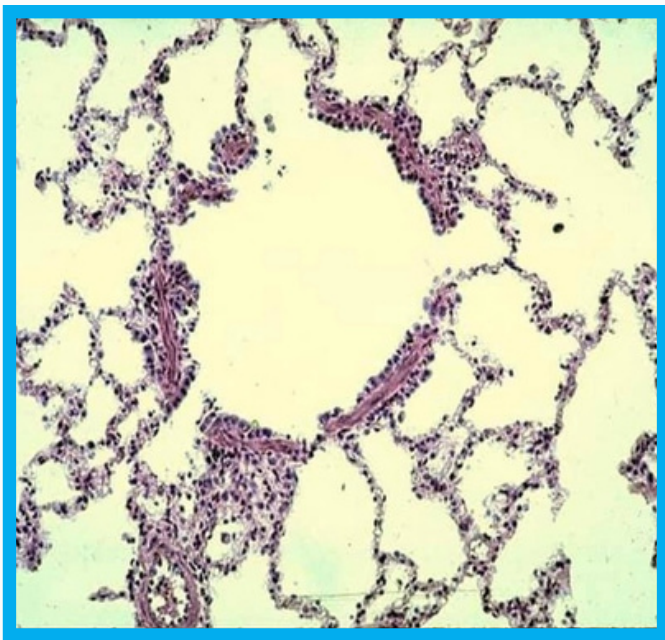
39) what is the pointed structure?



- A) terminal bronchiole
- B) respiratory bronchiole
- C) alveolar duct
- D) alveolar sac

Ans:

40) what is the type of the epithelium in this structure?



- A) simple columnar epi
- B) simple cuboidal epi
- C) pseudostratified columnar epi
- D) non-k stratified squamous epi

Ans:

اللَّهُمَّ إِنِّي أَسْأَلُكَ مِنَ الْخَيْرِ كُلِّهِ عَاجِلِهِ وَآجِلِهِ ، مَا عَلِمْتُ مِنْهُ وَمَا لَمْ أَعْلَمْ ،  
وَأَعُوذُ بِكَ مِنَ الشَّرِّ كُلِّهِ عَاجِلِهِ وَآجِلِهِ ، مَا عَلِمْتُ مِنْهُ وَمَا لَمْ أَعْلَمْ ، اللَّهُمَّ إِنِّي  
أَسْأَلُكَ مِنْ خَيْرِ مَا سَأَلَكَ عَبْدُكَ وَنَبِيُّكَ ، وَأَعُوذُ بِكَ مِنْ شَرِّ مَا عَاذَ بِهِ عَبْدُكَ  
وَنَبِيُّكَ ، اللَّهُمَّ إِنِّي أَسْأَلُكَ الْجَنَّةَ وَمَا قَرَّبَ إِلَيْهَا مِنْ قَوْلٍ أَوْ عَمَلٍ ، وَأَعُوذُ بِكَ مِنَ  
النَّارِ وَمَا قَرَّبَ إِلَيْهَا مِنْ قَوْلٍ أَوْ عَمَلٍ ، وَأَسْأَلُكَ أَنْ تَجْعَلَ كُلَّ قَضَائِي قَضِيَّتَهُ لِي

خيرًا

- نَبِيْنَا ﷺ