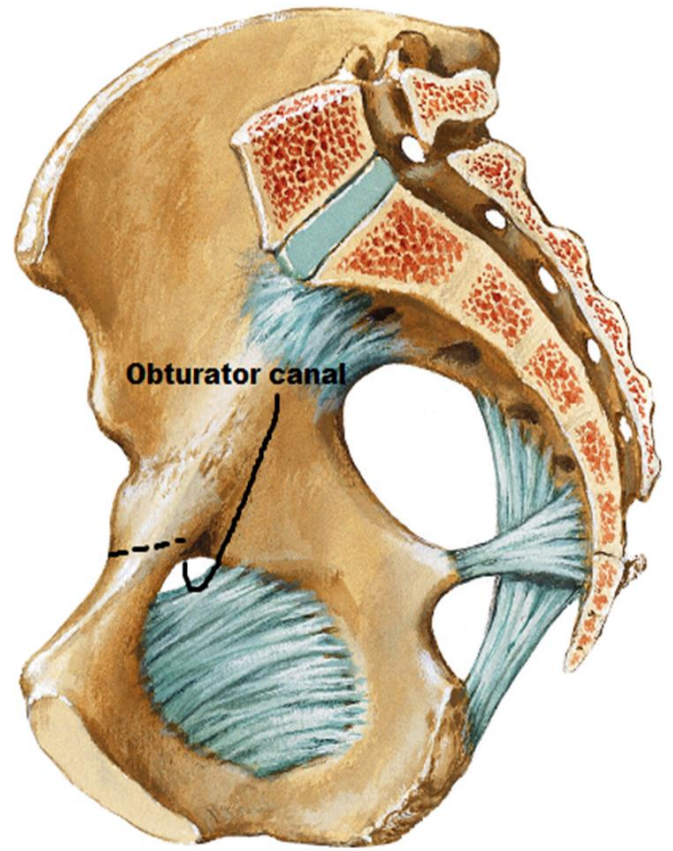
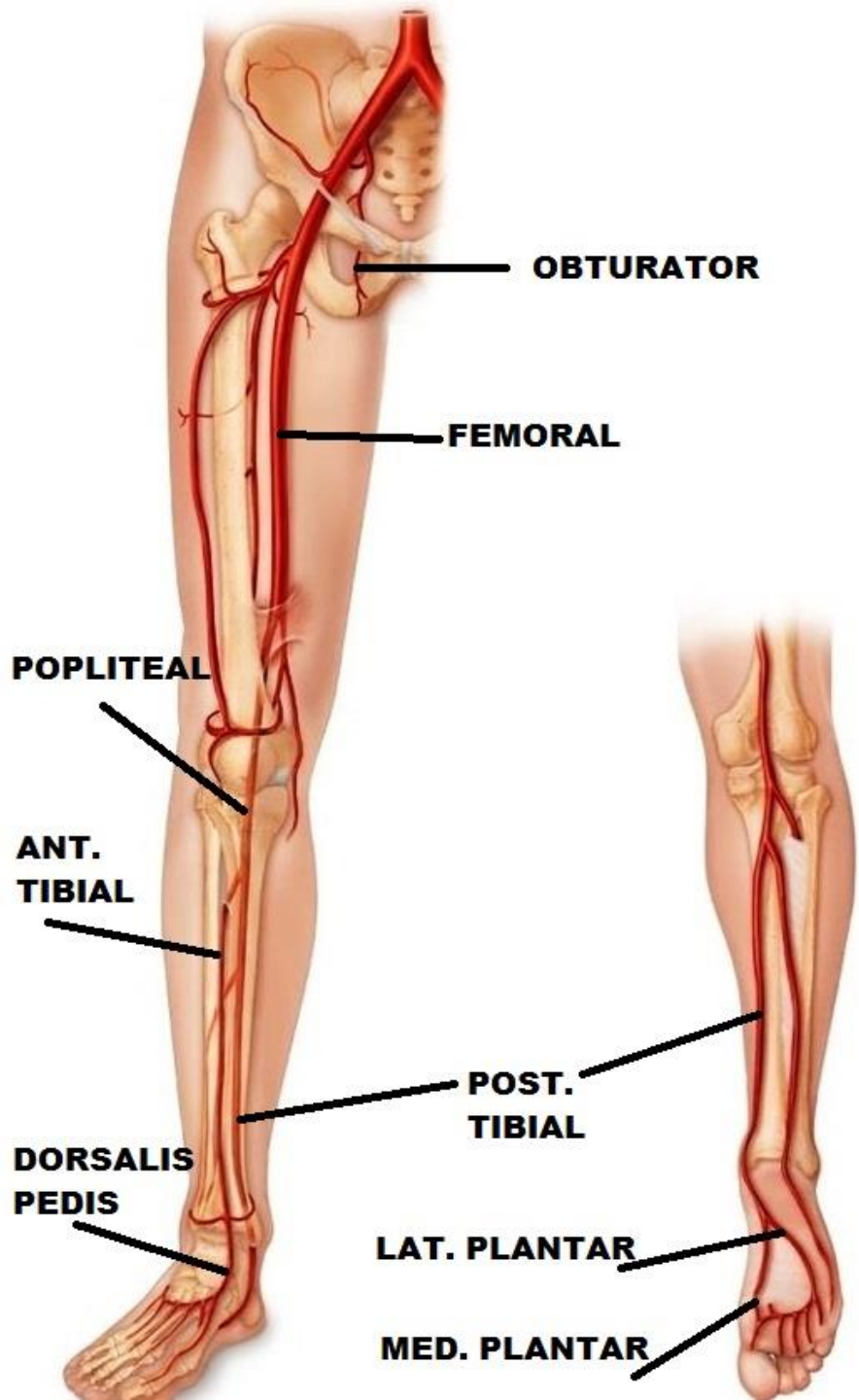


VESSELS OF LOWER LIMB



BY
DR ABULMAATY MOHAMED
ASSISTANT PROFESSOR
ANATOMY & EMBRYOLOGY
MUTAH UNIVERSITY



OBTURATOR ARTERY

O. :- br. from ant. division of int. iliac art.

Inside the pelvis

C. & r. :

-enters the thigh through obturator canal

-at ant. end of canal →

medial & lateral divisions

that from arterial circle

at margins of obturator membrane

branches :

-acetabular br.:-

pass through acetabular notch

to supply head of femur

-muscular branches:-

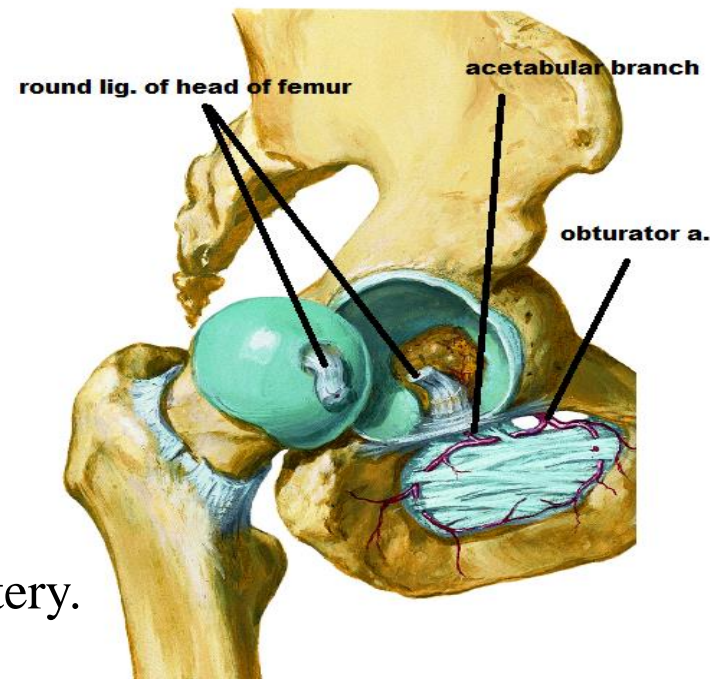
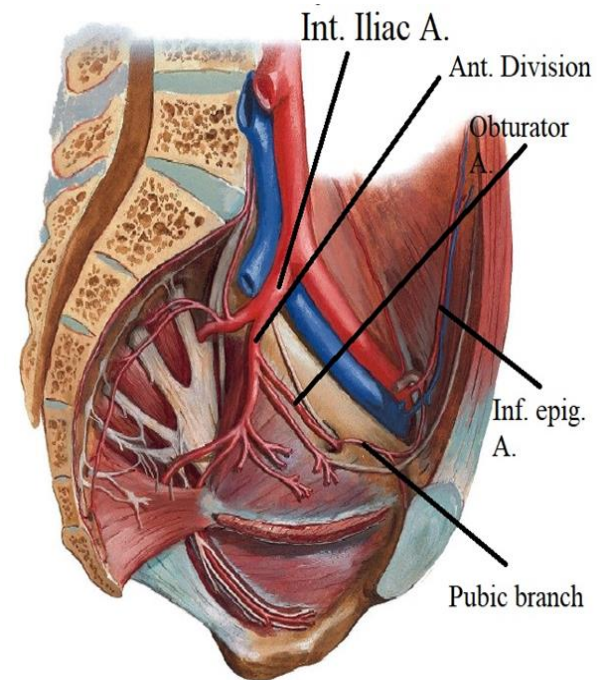
to medial compartment of thigh

-pubic branch:-

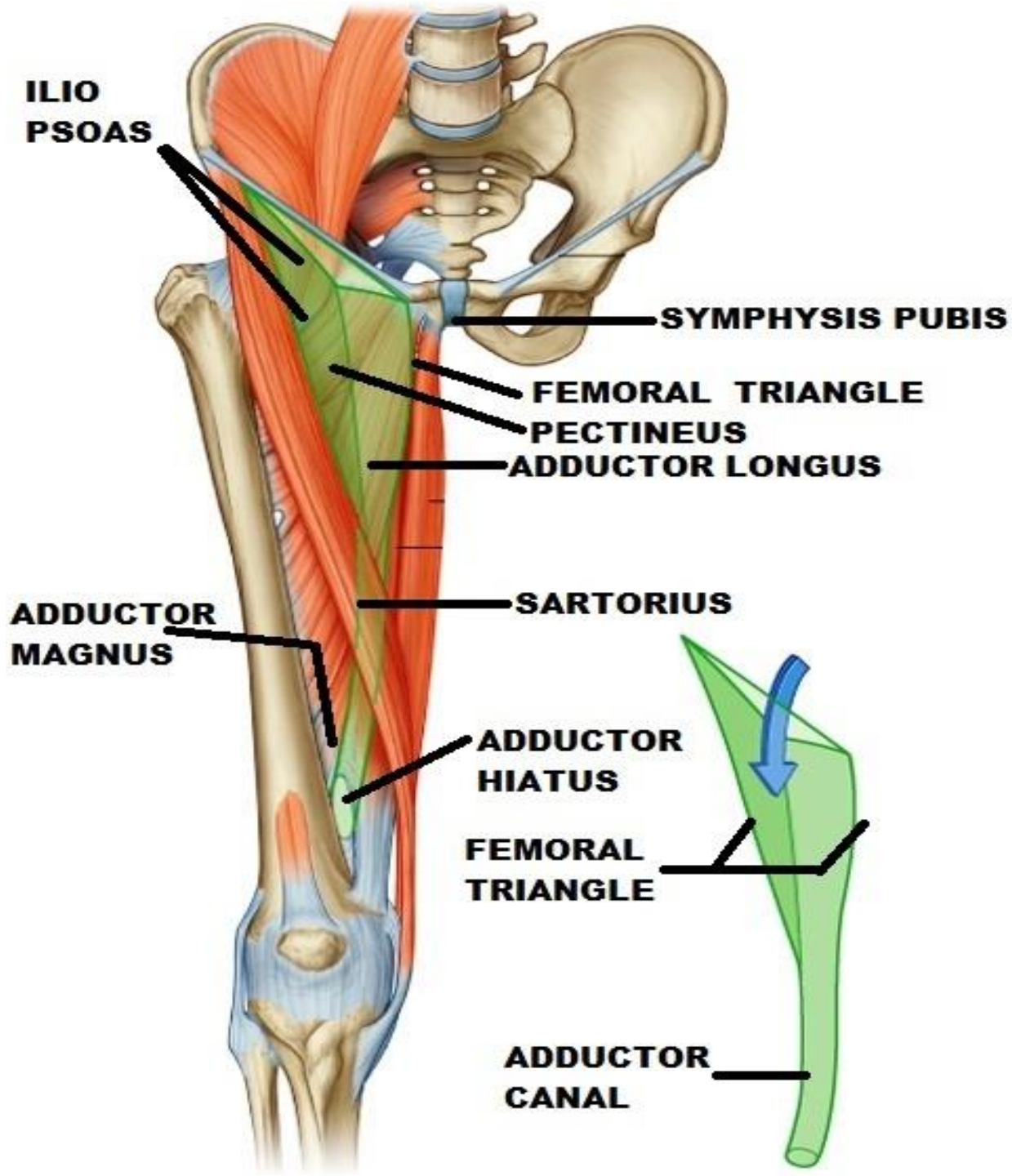
-It ascends on the pelvic surface of the pubis

to anastomose with

the pubic branch of the inferior epigastric artery.



REV.



FEMORAL ARTERY

Origin:-

continuation of ext. iliac art. deep to inguinal lig

at midinguinal point (midway between ASIS & symphysis pubis)

Course:

descend vertically

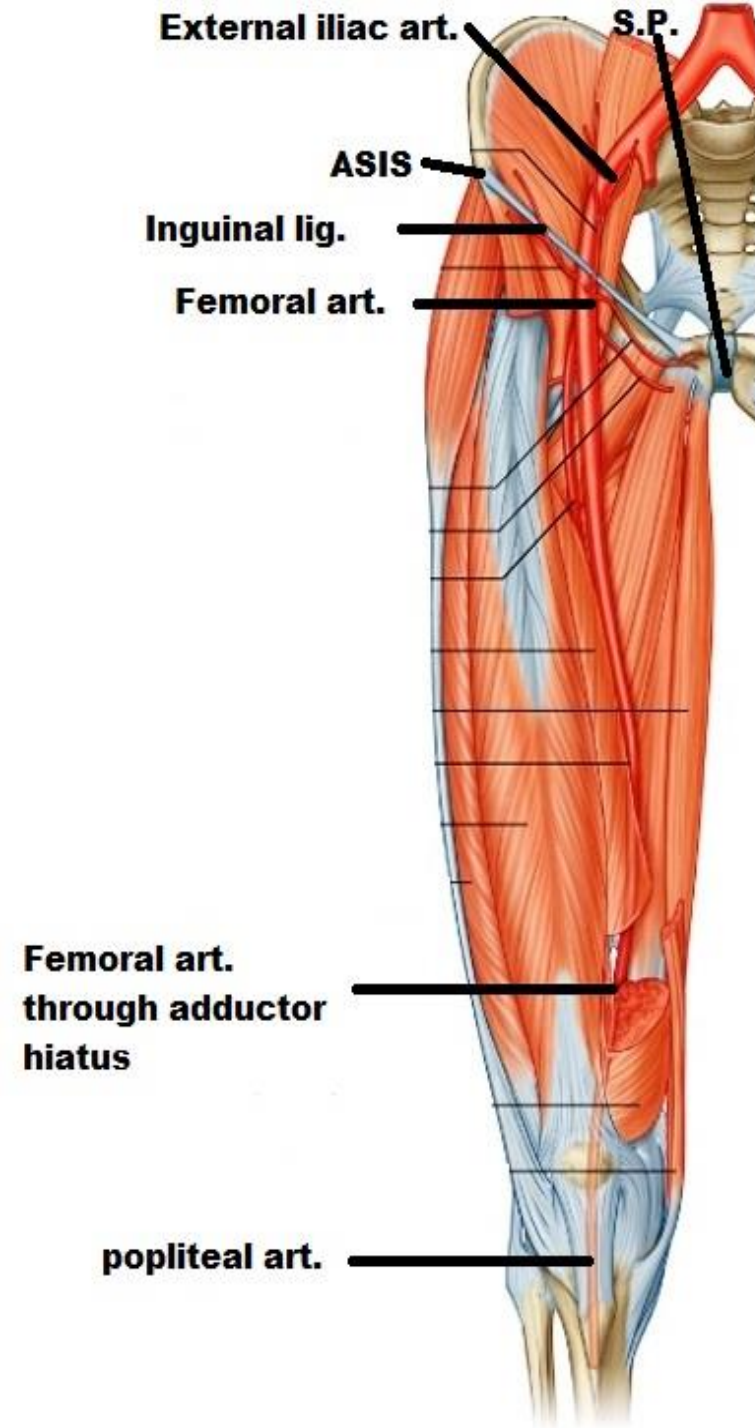
-upper part (superficial) in femoral Δ from base to apex

-lower part (deep) in adductor canal

From upper end to lower end

End: -

at adductor opening (hiatus) to continue as popliteal art.



FEMORAL ARTERY

Relations:

medial: Femoral V.

Lateral:- Femoral n.

-saphenous

then cross it from lateral to medial

-nerve to vastus medialis

superficial (ant.) -skin

-superficial fascia

-deep fascia

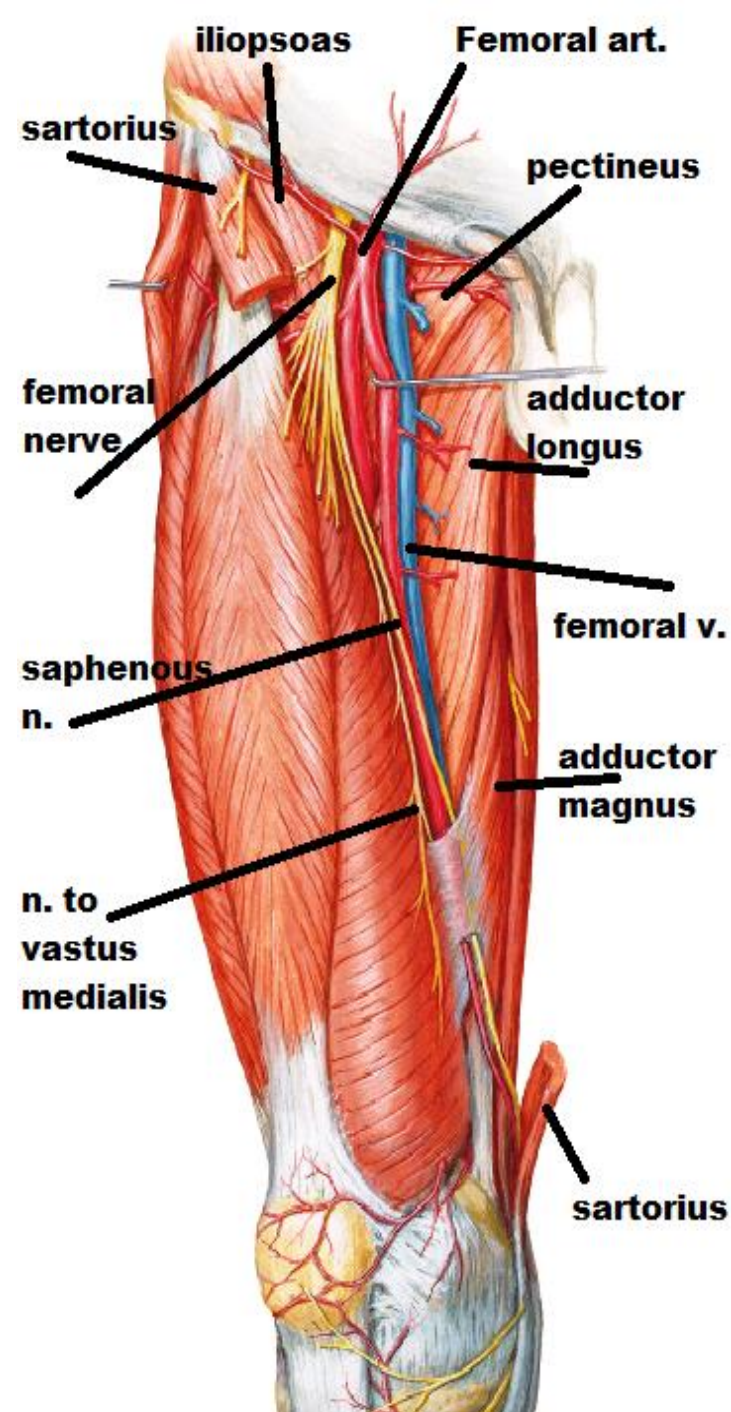
-Sartorius

deep (post.)

-iliopsoas

-pectineus: with profunda femoris in between

-adductor longus -Adductor magnus



FEMORAL ARTERY

Branches :

Superficial branches:
(Superficial inguinal arteries)

1-superficial circumflex iliac :

to anastomose around ASIS

2-superficial epigastric :

cross the inguinal ligament to enter the ant. abd. Wall till umbilicus

3-superficial ext. pudendal :

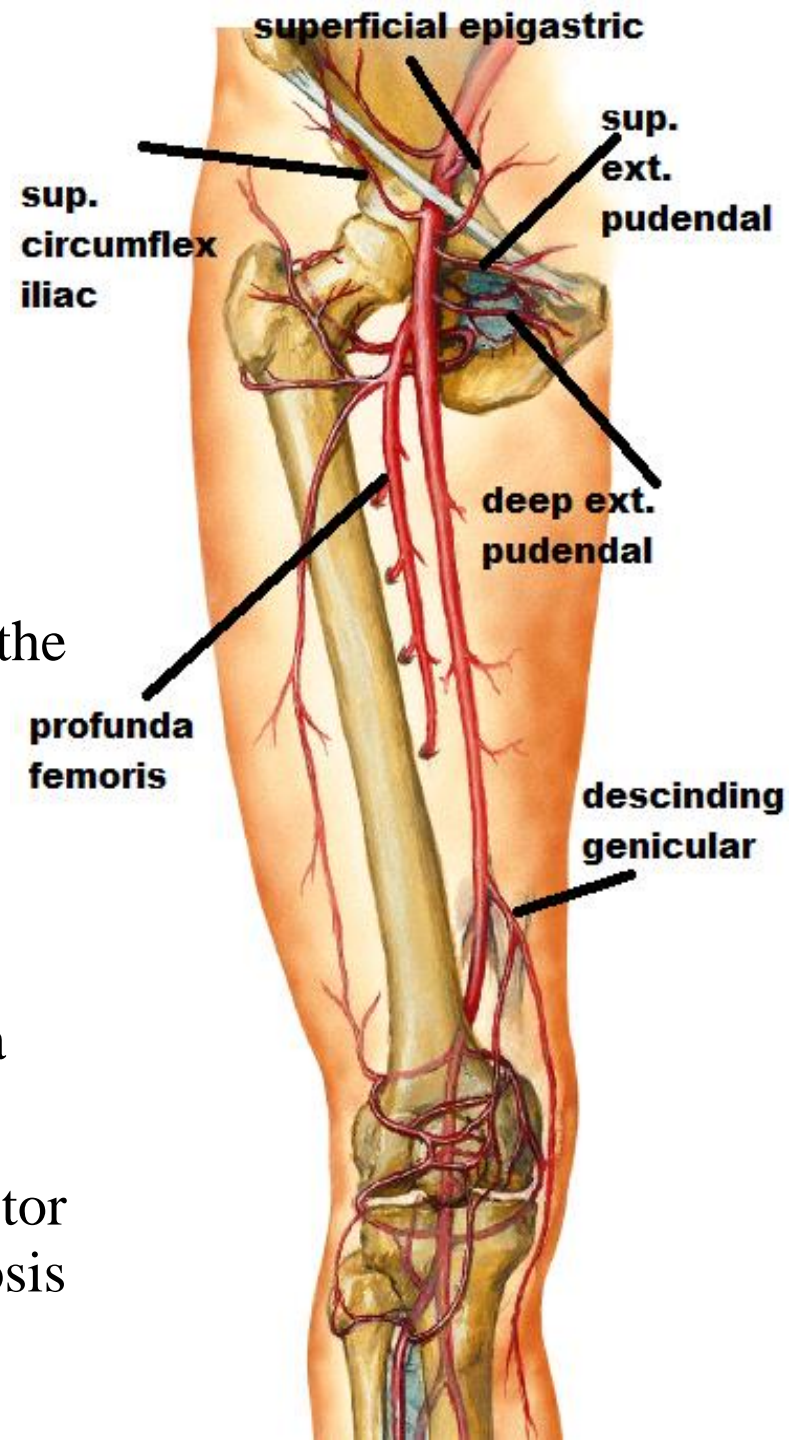
to ext. genitalia

Deep branches:

4-deep ext. pudendal : To ext. genitalia

5-descending genicular :

Only br. of femoral art. Inside adductor canal.it ends by sharing in anastomosis around knee



FEMORAL ARTERY

Branches :

Deep branches:

6-Profunda femoris art (the art. To thigh)

O.:- lateral side of femoral art

4 cm below ing. lig.

C & R:- descend downward & medially
deep to femoral vessels

E: perforate adductor magnus near its
insertion as the 4th perforating art.

Branches :

lateral circumflex femoral:- at the origin

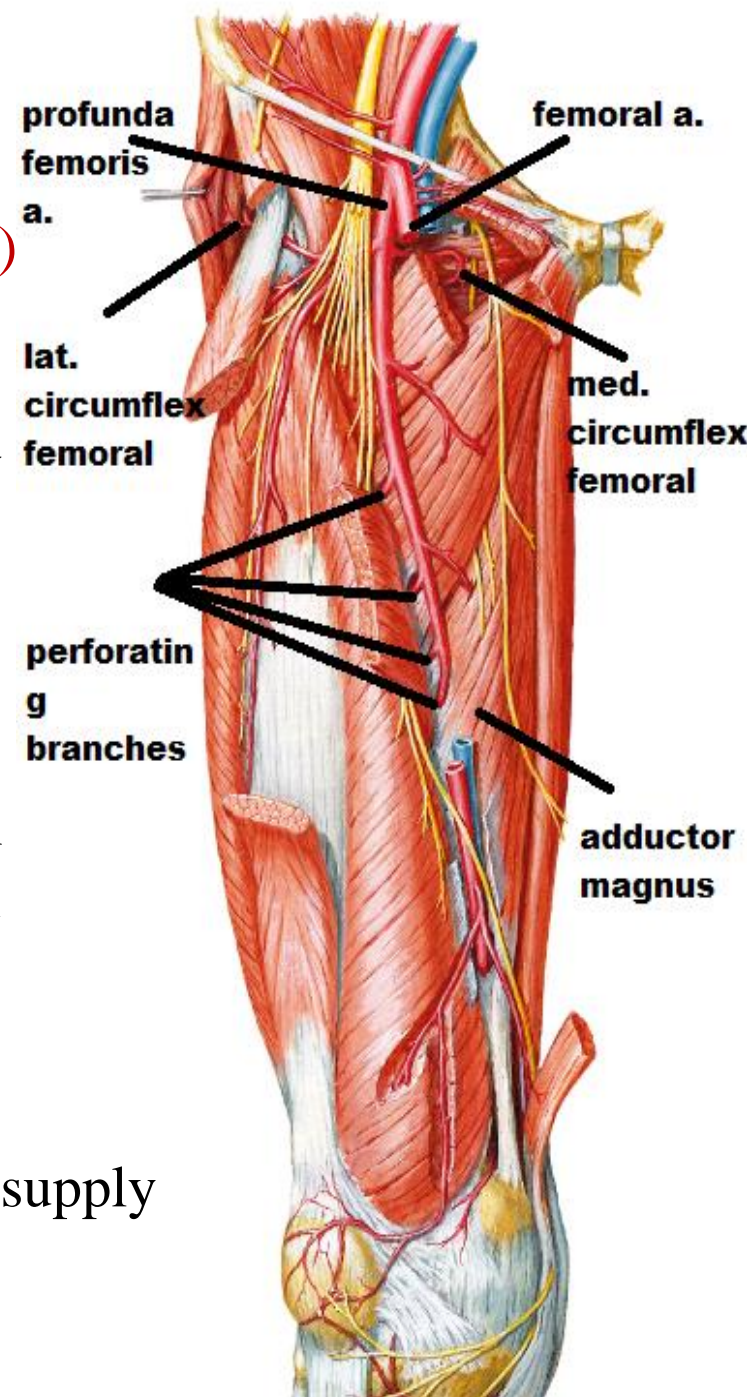
medial circumflex femoral:-at the origin

3perforating branches:

Perforate insertion of adductor magnus

The perforating arteries

form longitudinal chain anastomosis to supply
back of thigh

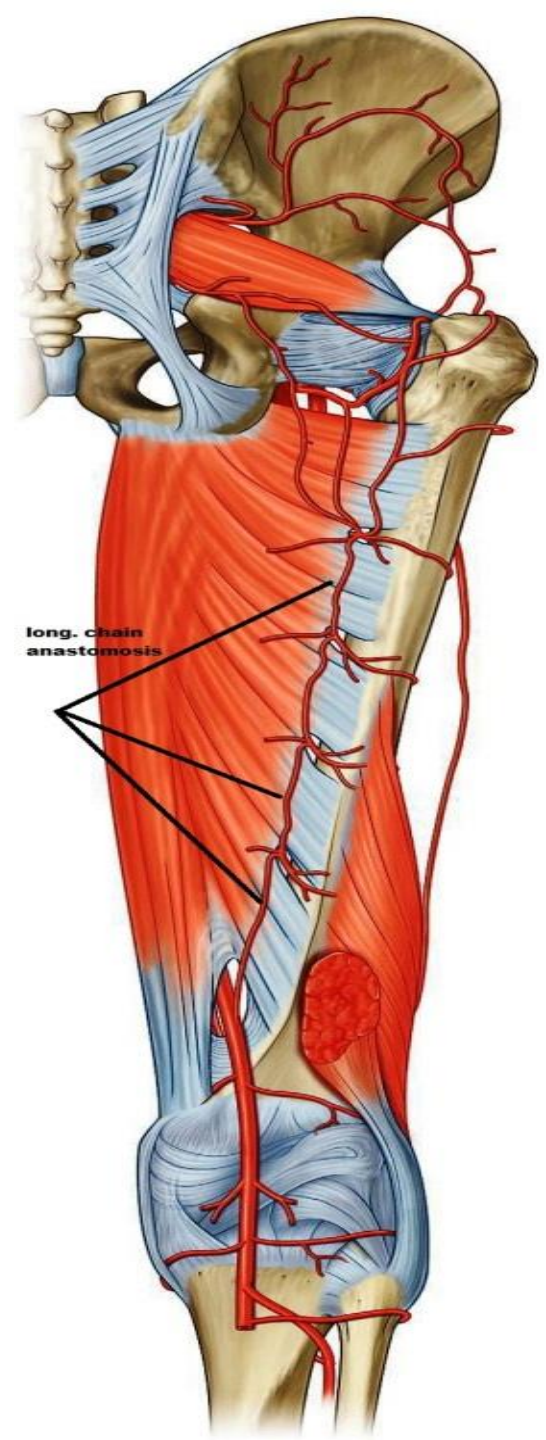
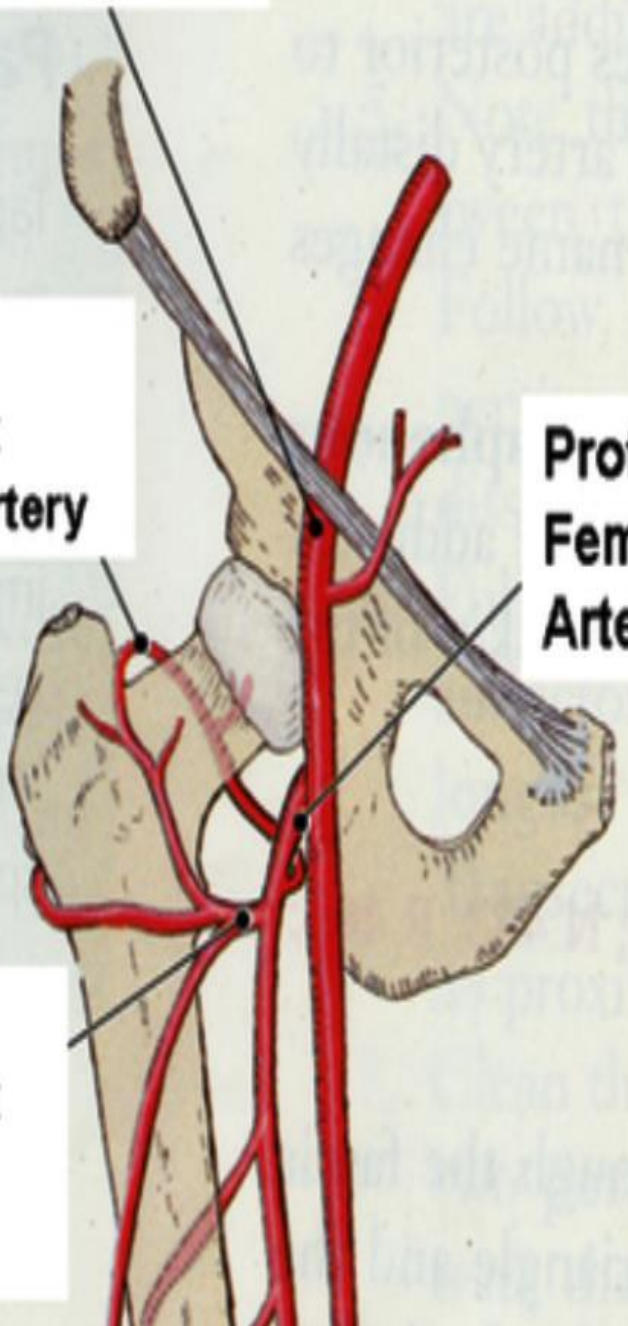


Femoral Artery

Medial
Circumflex
Femoral Artery

Profunda
Femoris
Artery

Lateral
Circumflex
Femoral
Artery



long. chain
anastomosis

FEMORAL ARTERY

Trochanteric anastomosis

-It is the main blood supply to head of femur

-formed by

Superior, inferior gluteal arteries &

Medial, lateral circumflex femoral arteries

cruciate anastomosis

-Between internal iliac & femoral

-formed by

1-1st perforator of profunda

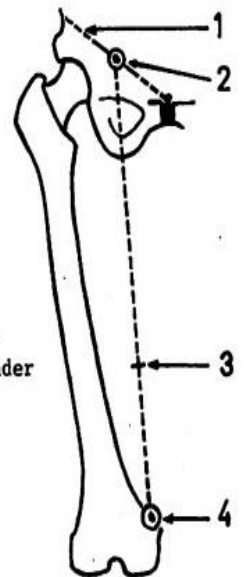
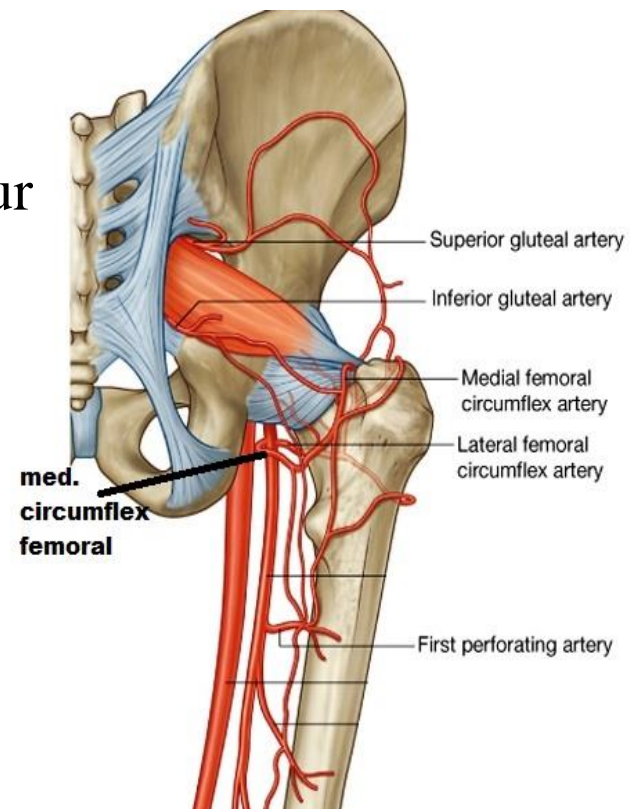
2-inferior gluteal

3-Medial circumflex femoral

4-lateral circumflex femoral

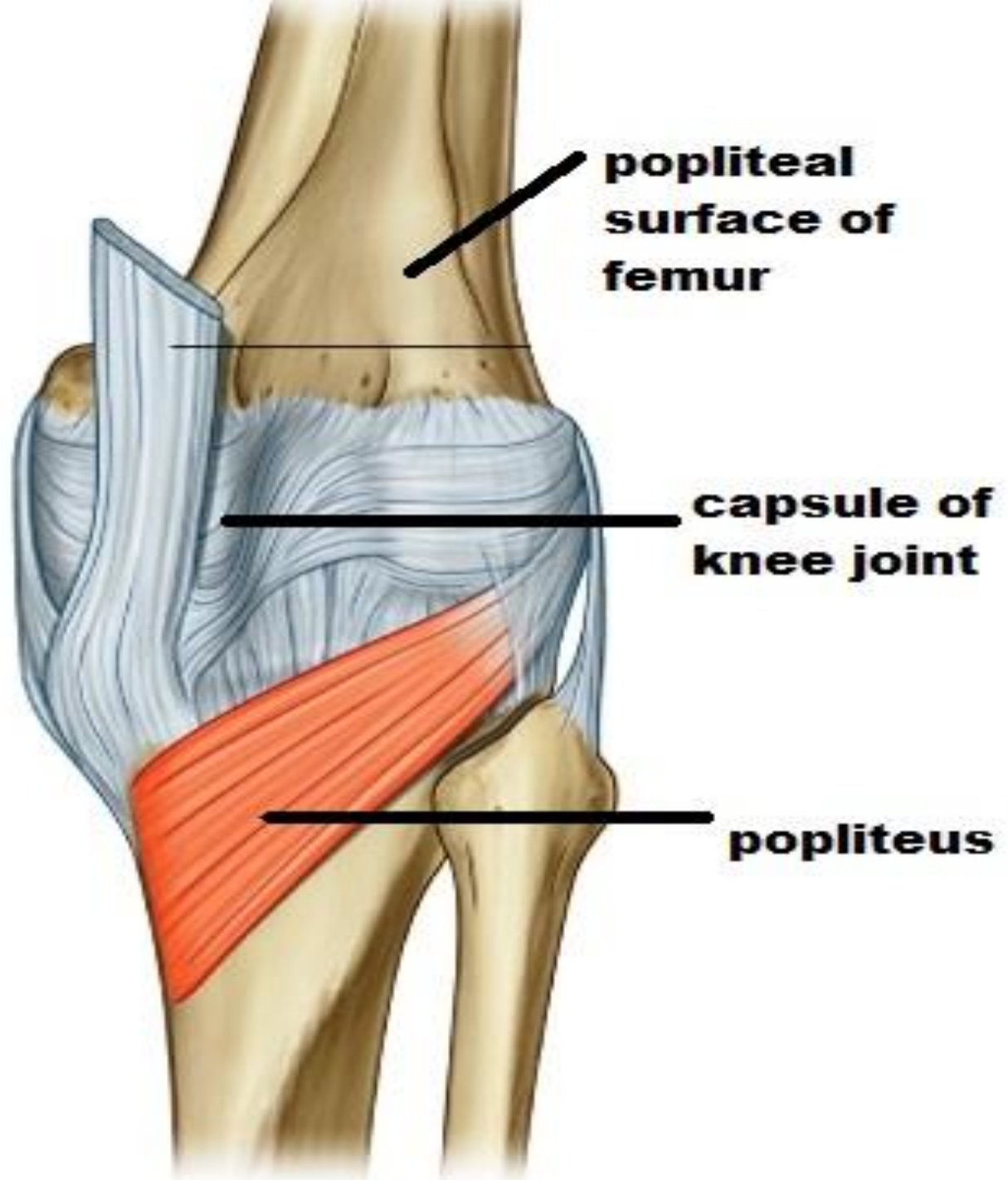
Surface anatomy

It corresponds to the upper 2/3 of a line drawn from the midinguinal point to the adductor tubercle



1. inguinal ligament.
2. midinguinal point.
3. end of femoral artery.
4. adductor tubercle (can be felt under the skin).

REV.



POPLITEAL ARTERY

O : -continuation of femoral art
-at adductor opening

C. : descends in popliteal fossa
as deepest structure

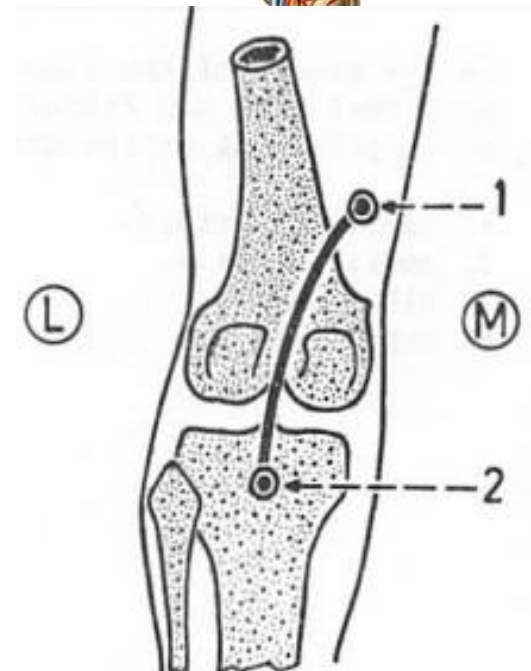
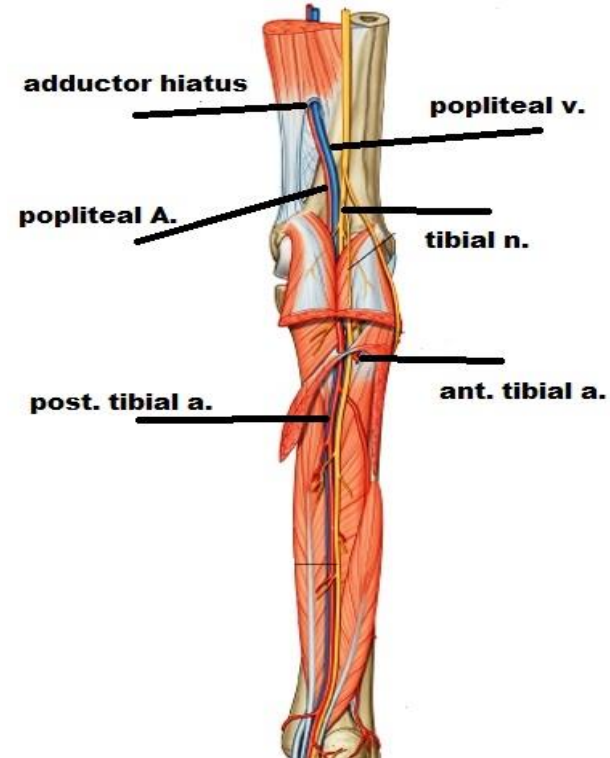
E. : -at lower border of popliteus
-give ant. & post tibial arteries

Surface Anatomy

represented by a line () 2 points

point 1 :- at medial side of the thigh
at junction of its upper 2 /3 with its
lower 1 /3

point 2:- at the middle of upper part
of back of leg at the level of
head of fibula



POPLITEAL ARTERY

branches :

A-muscular brs : to near muscles

B-genicular brs : 5

superomedial , superolateral

inferomedial , inferolateral

Middle genicular

they share in anastomosis

around knee joint

anastomosis around knee

descending genicular (femoral)

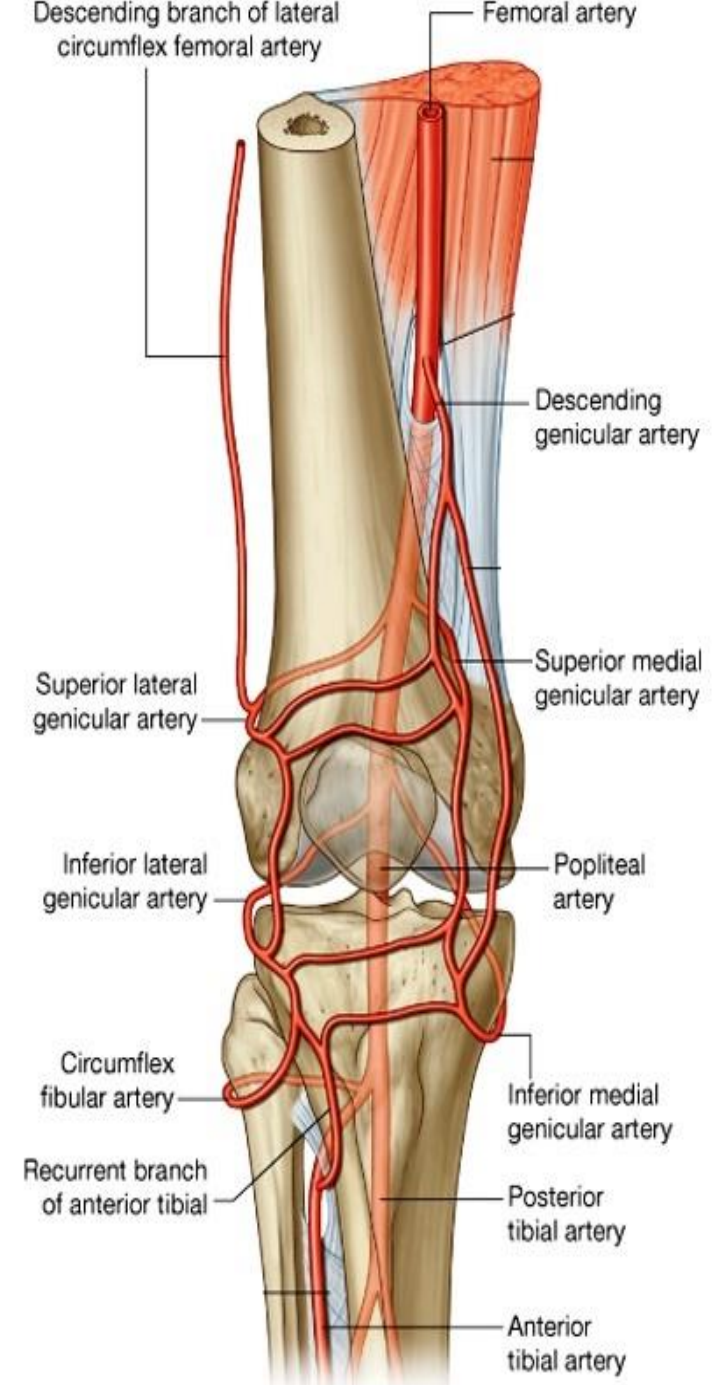
br of lateral cir femoral (profunda)

5 genicular branches (popliteal)

ant. & post. tibial recurrent

(ant. tibial)

circumflex fibular (post. tibial)



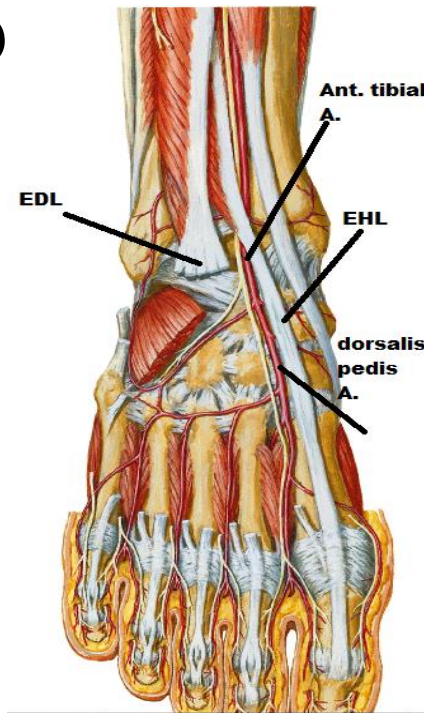
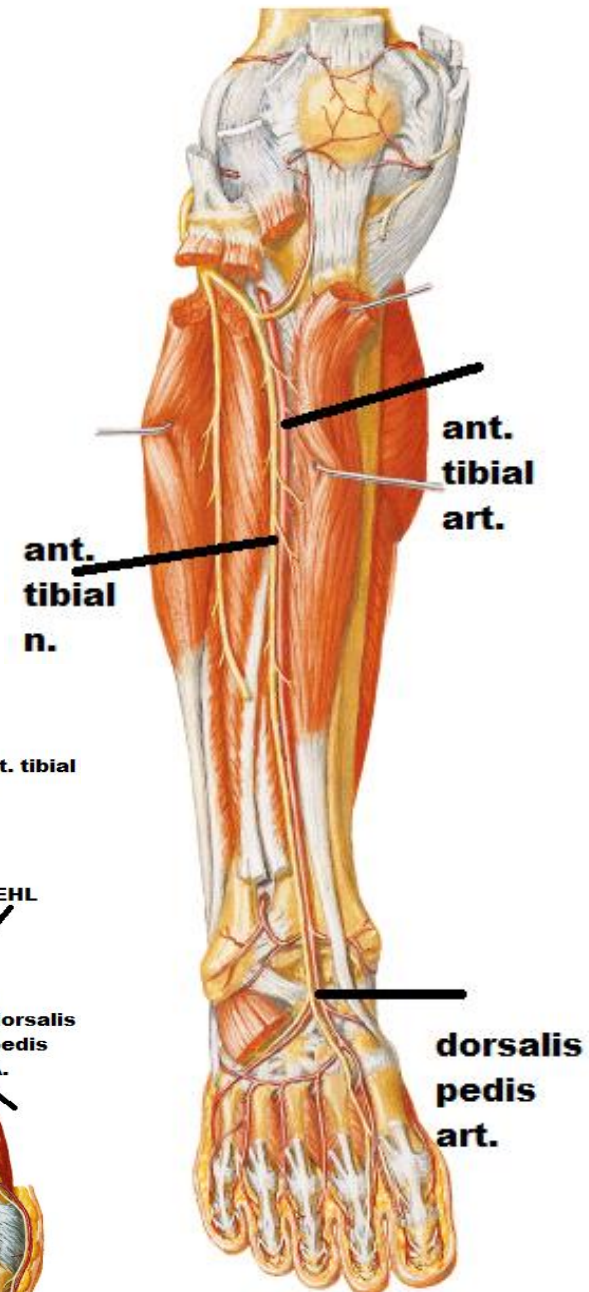
ANT. TIBIAL ARTERY

O : - smaller terminal br. of popliteal art.
- at lower border of popliteus

C & R:

-descends in front of interosseous membrane with ant. tibial n.
-at the ankle; it lies between tendons of ext. hallucis longus (medially) & ext. digit. Longus (laterally) where pulsations are felt

E: -midway () 2 malleoli, to be dorsalis pedis art.



ANT. TIBIAL ARTERY

branches :

-muscular :

to muscles of ant. compartment

- post. tibial recurrent:

-ant. tibial recurrent:

both brs share in

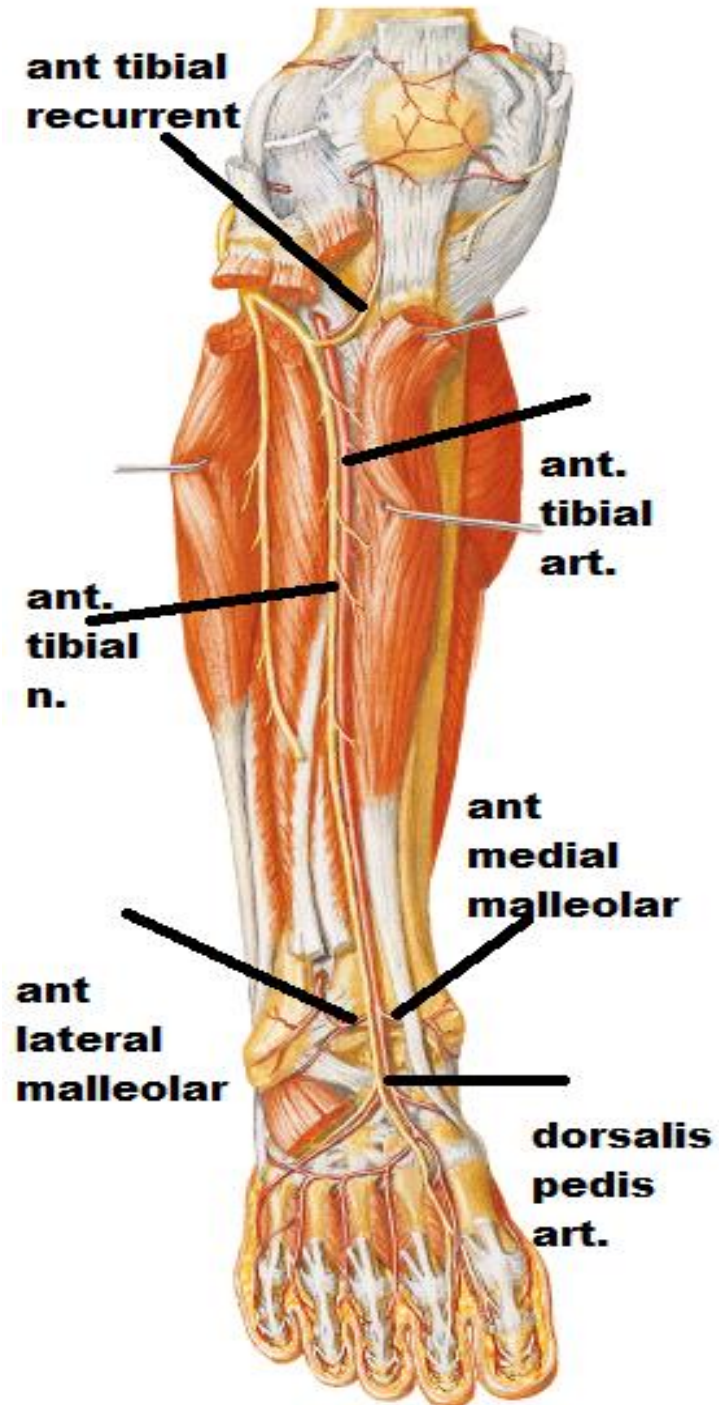
anastomosis around knee

-ant. medial malleolar

-ant. lateral malleolar

both share in

anastomosis around ankle



DORSALIS PEDIS ARTERY

O : -midway () 2 malleoli

-as continuation of ant. tibial art

C: -run forward on dorsum of foot in line with 1st interdigital cleft

- downward () 2 heads of 1st dorsal interosseous to enter sole

E. : - in sole

- anastomose with plantar arch

surface anatomy:- line () 2 points

point 1 :- in front of ankle midway () the 2 malleoli

point 2:- proximal end of 1st metatarsal space

brs :

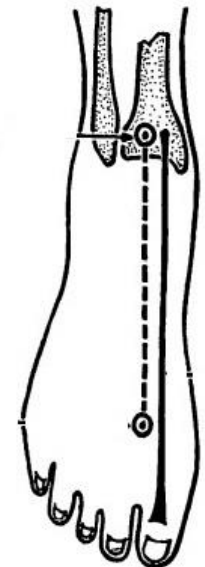
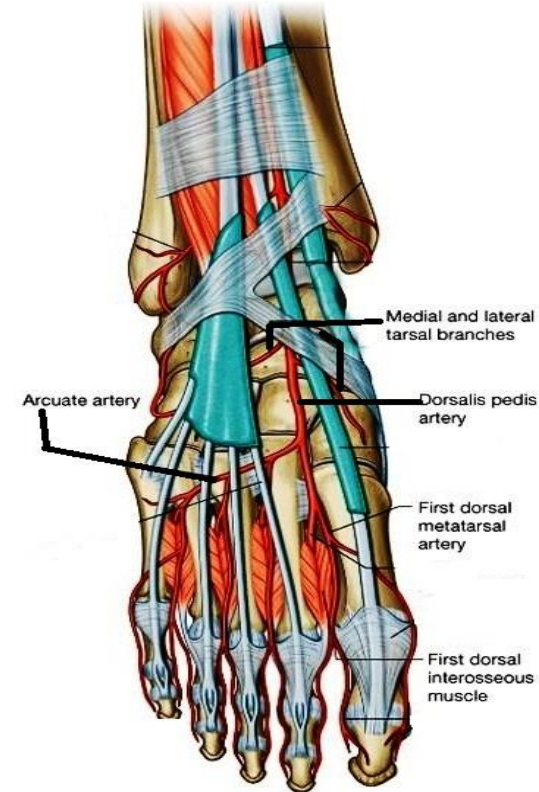
1- medial & lateral tarsal :

2- 1st dorsal metatarsal

3- Arcuate →

2nd, 3rd, 4th dorsal metatarsal

4- 1st plantar metatarsal.



POSTERIOR TIBIAL ARTERY

O : -larger terminal br of popliteal art

-at lower border of popliteus.

-It supplies post.

&lateral compartments of leg

C: descends in posterior compartment of the leg accompanied by posterior tibial nerve

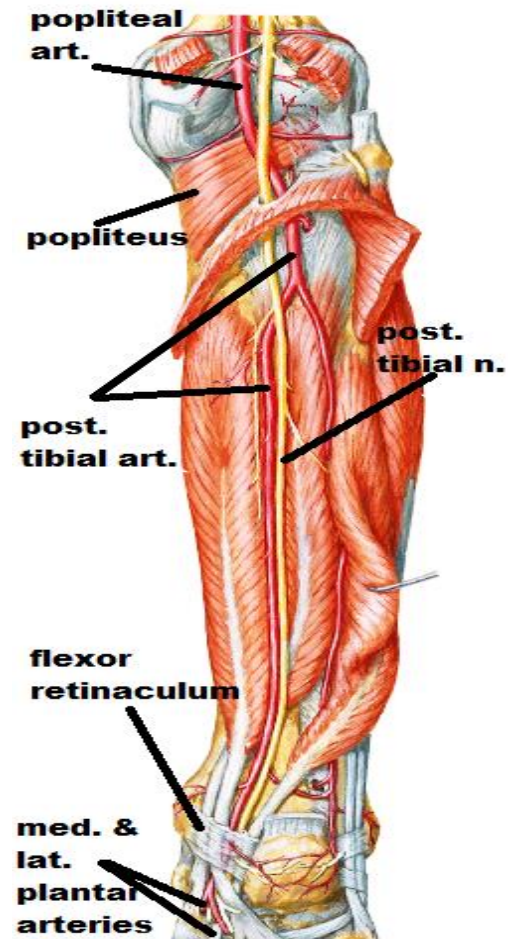
E : -deep to flexor retinaculum (behind medial malleolus)(pulsation felt)

-give medial & lateral plantar arteries

surface anatomy

point 1:- at the middle of upper part of back of leg at the level of head of fibula

point 2:- midway () medial malleolus and the heel



POSTERIOR TIBIAL ARTERY

branches :

1-circumflex fibular:-

share in anastomosis around knee

2-peroneal art. :

The largest & longest br
that supply lateral compartment

3-terminal brs :

medial & lateral plantar arteries

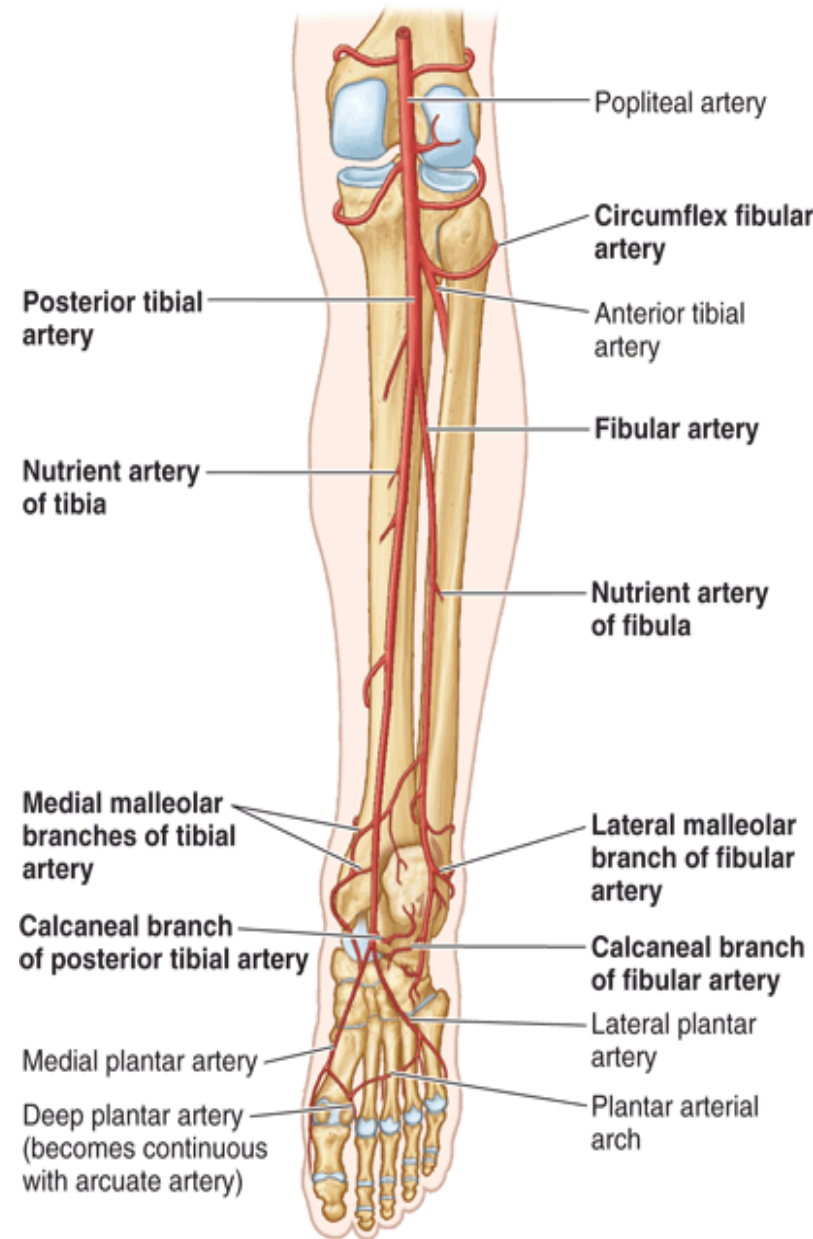
4-muscular brs :

to muscles of post. compartment

5-nutrient br: to tibia

6-medial calcanean & malleolar brs :

anastomosis around ankle



Posterior view with foot plantar flexed

POSTERIOR TIBIAL ARTERY

Peroneal (fibular) art.:

O : - near to origin of post. tibial art

C : -descend vertically
behind the fibula

close to flexor hallucis longus

brs :

1-perforating br.:

pierce interosseous membrane
to reach ant. Compartment of leg

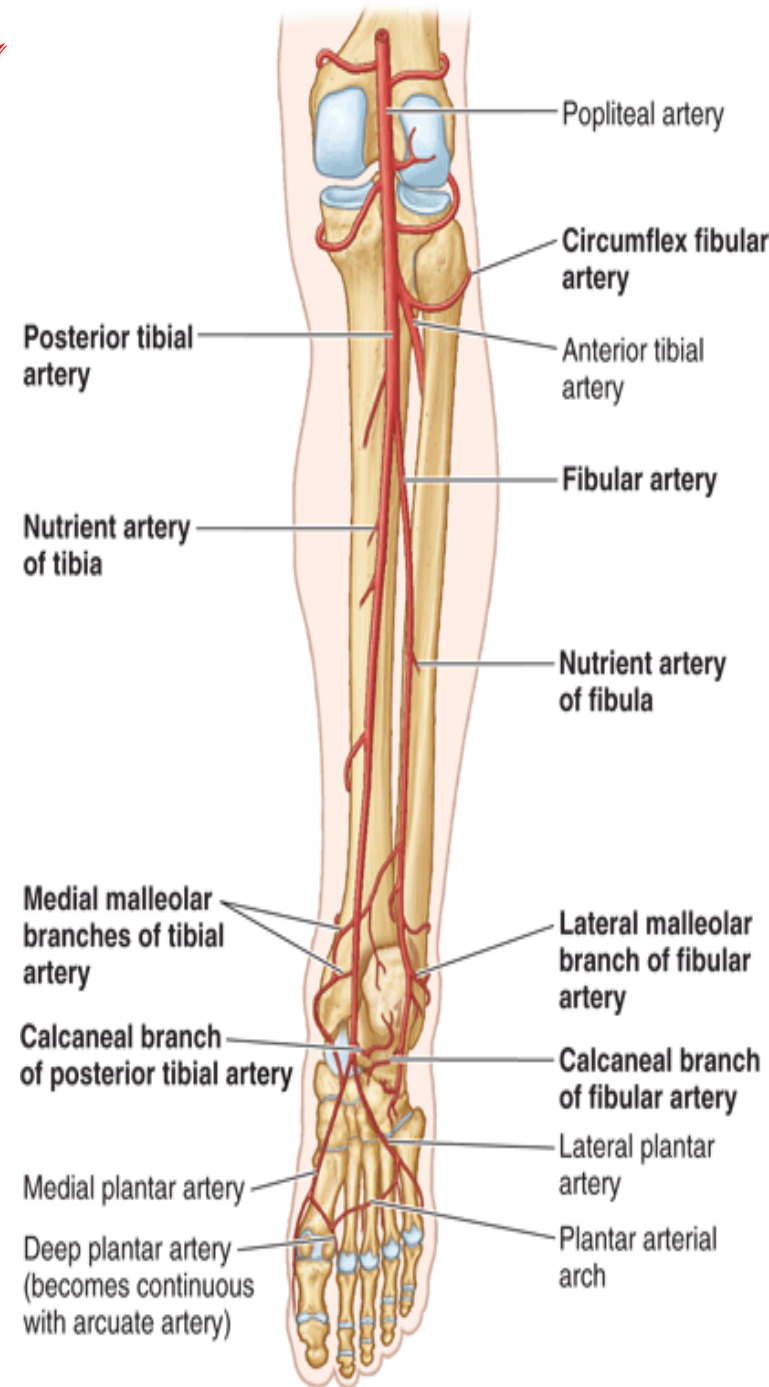
2-muscular brs :

to muscles of
lateral compartment of leg

3-nutrient br. to fibula

4- lateral calcanean & malleolar brs :

to anastomosis around ankle



MEDIAL PLANTAR ARTERY

O: - small terminal br.
of post. tibial art.

C & r: with medial plantar n.
on medial border of the foot

E.: by supplying medial side
of big toe

surface anatomy :-

line () 2 points

point 1:- midway () medial malleolus
and the heel

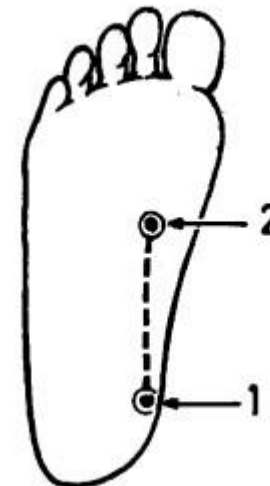
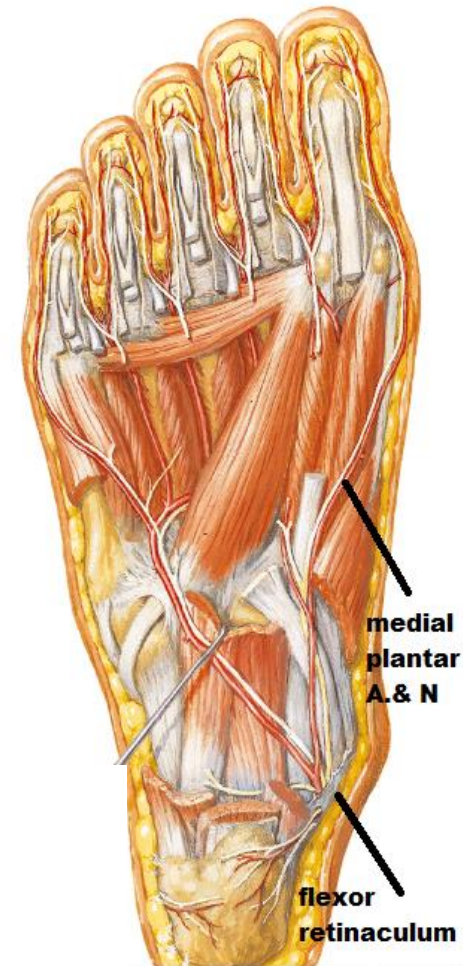
point 2:- at the level of navicular bone

Brs:

Cutaneous &

Muscular &

Articular branches:



LATERAL PLANTAR ARTERY

O: - large terminal br
of post. tibial art.

C & r:

-with lateral plantar n.
to reach base of 5th metatarsal bone
where it curve medially
to form plantar arch

E.: -anastomose with
the end of dorsalis pedis art.

Surface anatomy:-

line () 3 points

point 1:- midway () medial malleolus
and the heel

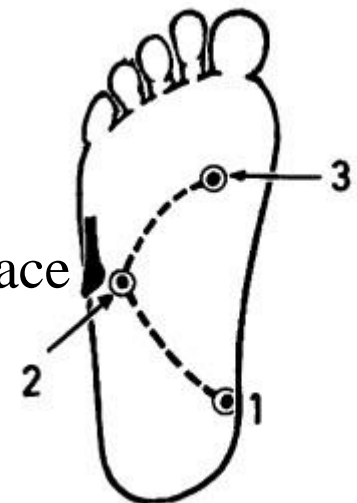
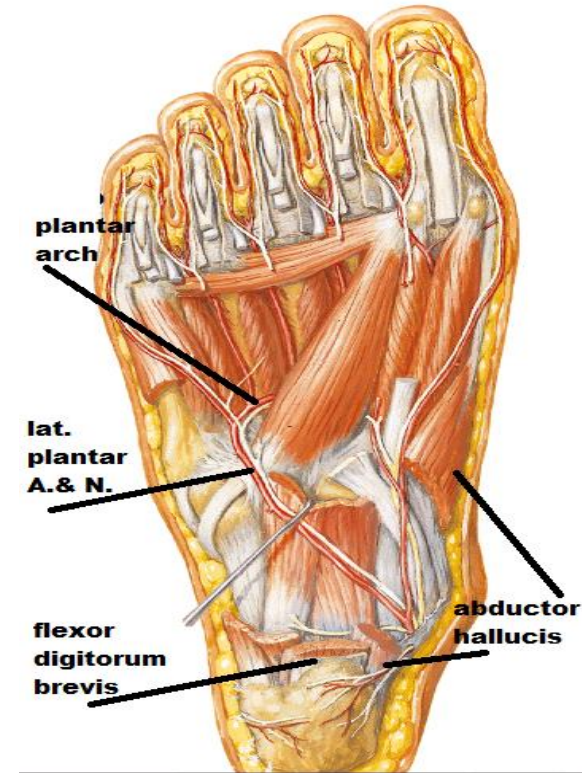
point 2:- 1 inch medial to base of 5th metatarsal

point 3:- at the proximal end of 1st intermetatarsal space

brs:

1-cutaneous & muscular & articular branches

2-The plantar arch give: plantar digital arteries to toes.



GREAT SAPHENOUS VEIN

O.: - medial end of the dorsal venous arch

C & r:-

-ascend in front of medial malleolus,
on medial side of leg & knee
on medial side of thigh
then deviates forwards

E:-pass through saphenous opening
to join the femoral vein.

Tributaries:

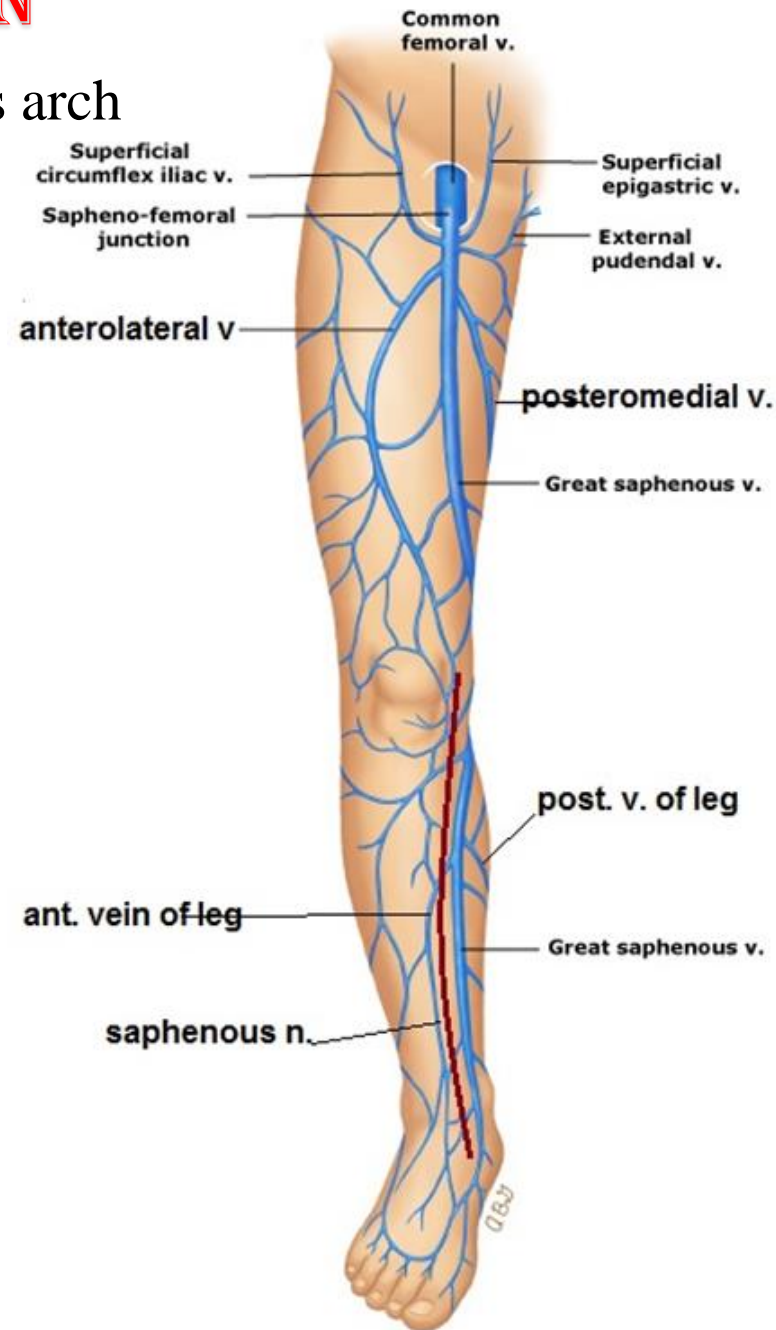
1-superficial veins.-

A-below the knee:-

- 1-anterior vein of the leg
- 2-posterior vein of the leg

B-above the knee:-

- 3-anterolateral vein of thigh
- 4-posteromedial vein of thigh



GREAT SAPHENOUS VEIN

Tributaries:

1-superficial veins.-

C-at the inguinal region:-

5-superficial epigastric vein

6-superficial circumflex iliac vein

7-superficial external pudendal vein

2- Perforating veins:-

A-Above medial malleolus:-

Connect it with deep veins in post compartment of the leg

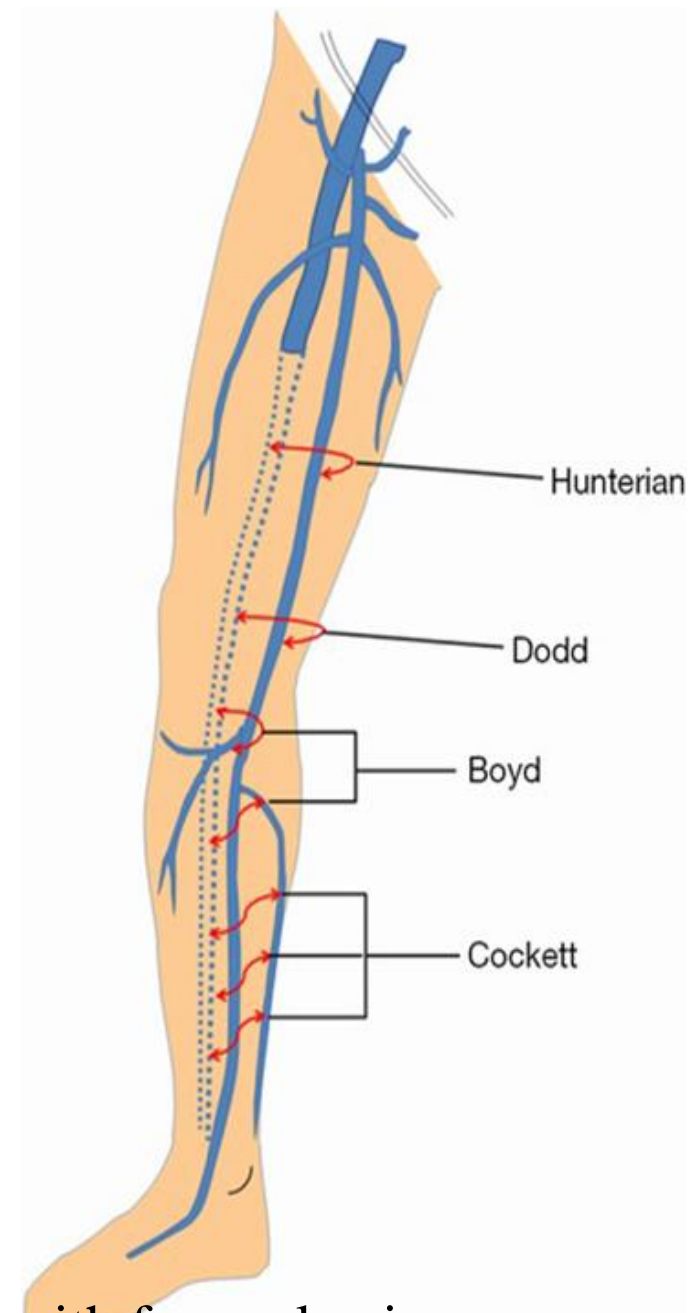
B-At tibial tuberosity:-

Connect it with veins in the calf

C-at the knee:-

connect it with popliteal vein

D-At level of adductor canal:- connect it with femoral vein





THANQ