

# Neurosurgery

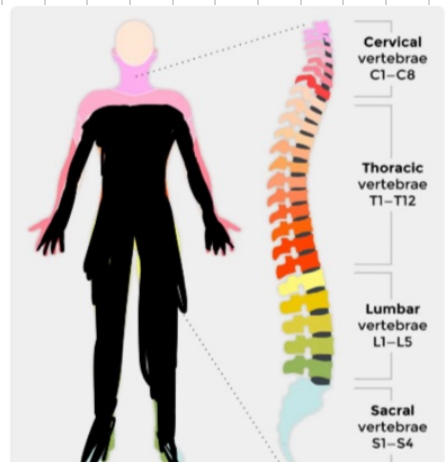
5/12/24

- 1- diagnosis
- 2- associated with which type of chiri
- 3- best imaging before operation
- 4- most common site



19 yo male suffered a high speed vehicular accident. He could not move his lower limbs. BP was 90/65 and pulse was 45. Upon physical examination, he exhibited minimal voluntary movement in lower limb (4/5), and full power in upper limb EXCEPT elbow extension and hand grasp. Sensory completely lost in the parts highlighted yellow (everything starting from chest down to lower limb)

- What caused these vitals? Sympathetic loss
- Which columns involved? 2 columns (burst fracture)
- Which reflex lost? Triceps
- ASIA score?



GCS =12

Spontaneous eye

Produce words

Localised pain

All of these are features of this except?

Cross midline

Initial investigation in emergency setting? CT scan without contrast

Management of large subdural hemorrhage with midline shift?

Surgical evacuation



anisocoria w fixed dilated right pupil - مع صورة

What's point C? Point of herniation

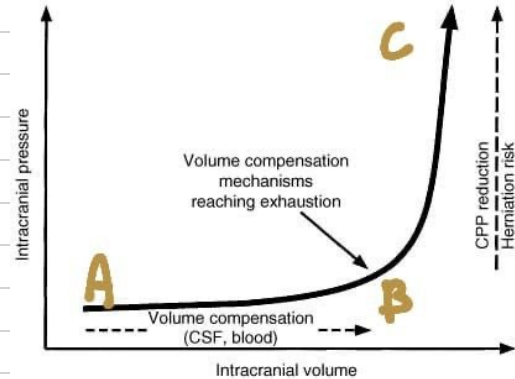
What mechanism maintains ICP at point A?

Vasodilation + vasoconstriction

What type of herniation causes this image?

Uncal

Which nerve affected? Right oculomotor (ipsilateral)..



Microscopic: Rosenthal fibers  
Grade :1



All of these are features except?  
Comes from glial cells  
How to confirm grade?  
Histopathology/biopsy

