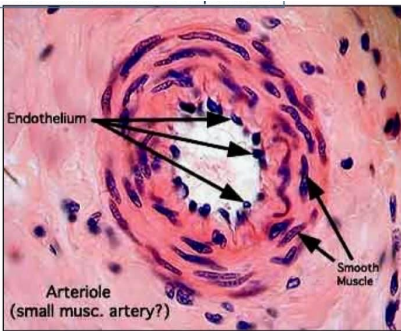
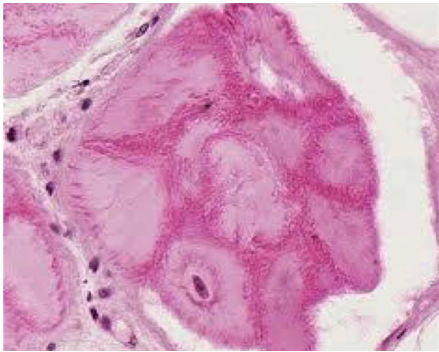


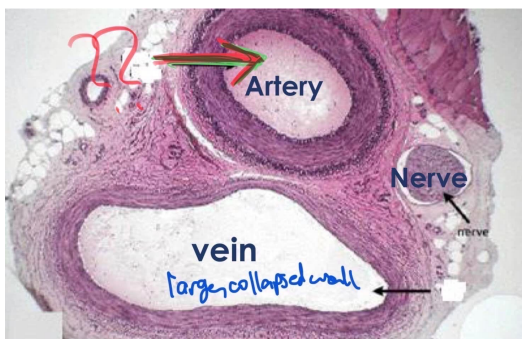
Q1: Identify the structure?  
A: Arterioles



Q2: Which of the following is FALSE about the following structure?  
-Myofibrils in center   
-Large   
-Has abundant glycogen

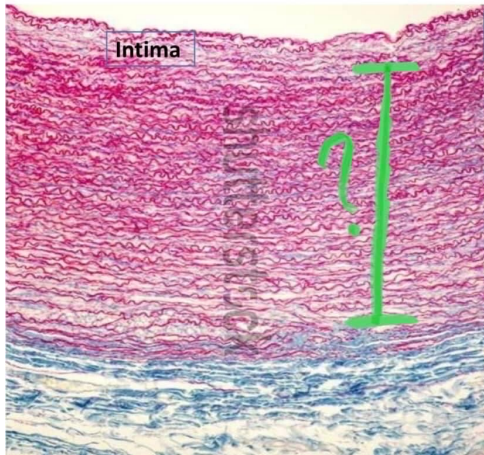


Q3: Identify the structure?  
-Muscular artery



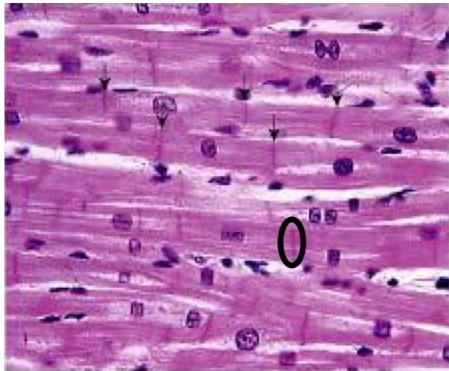
Q4: Identify the structure?

- Tunica media of elastic artery ✓
- Tunica adventitia of elastic artery



Q5: Which of the following is true about the following structure?

- Cells are connected by intercalated disc ✓
- Spindle shaped



Q6: Which is true about lead 1?

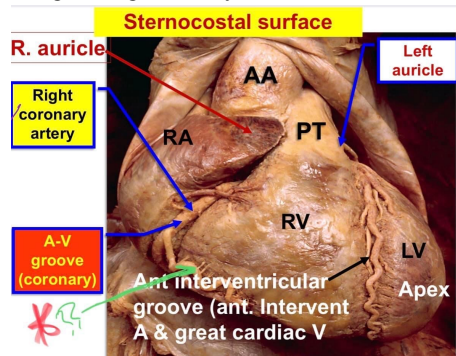
- Between the left arm and the right arm ✓

Q7: True about V4?

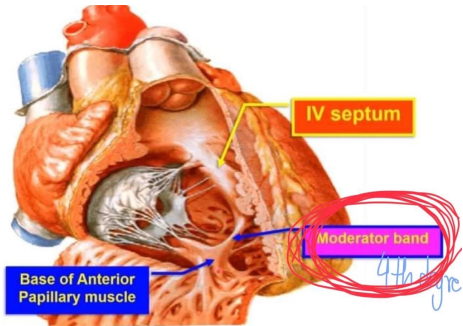
- 5th intercostal space at the left midclavicular line ✓

Q8: Identify the structure

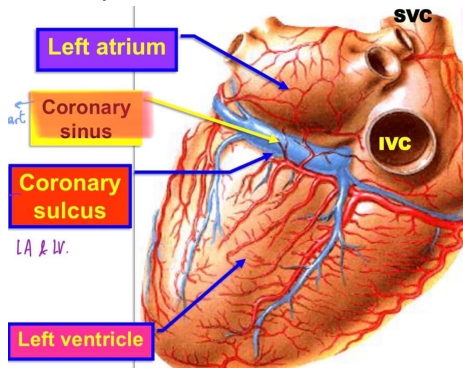
A: Right marginal artery



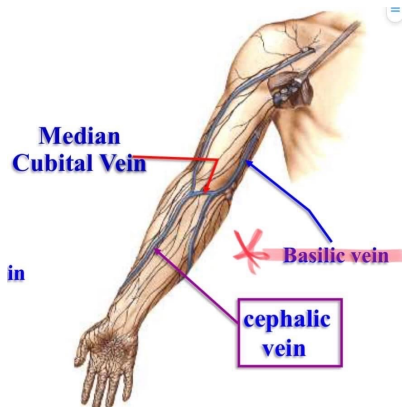
Q9: Identify the structure  
A: Moderator band



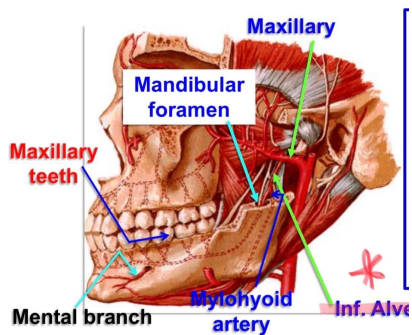
Q10: Identify the structure  
A: Coronary sinus



Q11: Identify the structure  
A: Basilic vein

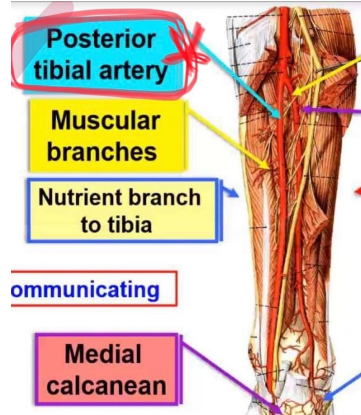


Q12: Identify the structure  
A: Inferior alveolar artery



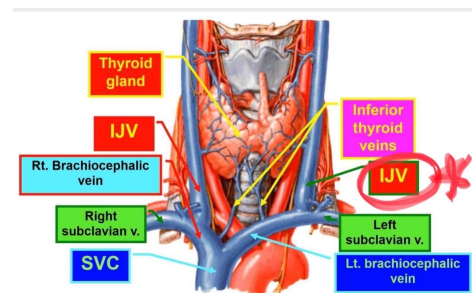
Q13:Identify the structure

A:Posterior tibial artery



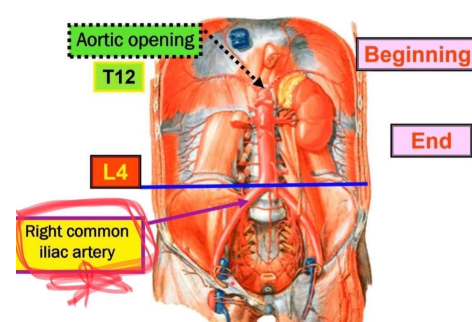
Q14:Identify the structure

A:IJV (يسر كان محدد على جهة معينة يا يمين يا يسار)



Q15:Identify the structure

A: common iliac artery



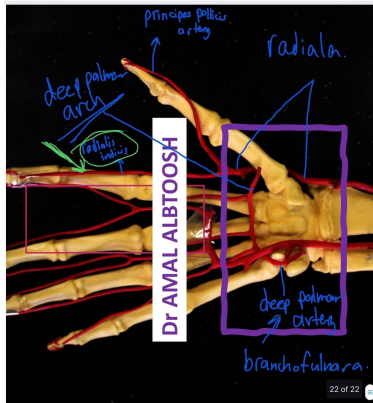
Q16:Identify the structure?

A:Superficial palmar arch



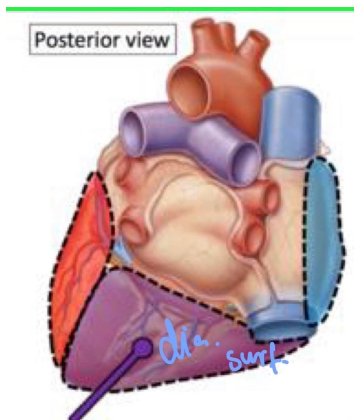
Q17: Identify the structure?

A: Radialis Indicis



Q18: اجت صورة بتشبه هاي للقلب من ورا وكان السؤال  
Which of the following is not in the picture?

- Right auricle ✓
- IVC
- Diaphragmatic surface
- Right border
- Base of the heart



Q19: If an individual's heart rate, total peripheral resistance, and compliance is constant, what will happen when stroke volume increase?

- Pulse pressure and MAB don't change
- Pulse pressure and MAB both increase ✓
- Pulse pressure and MAB both decrease
- Pulse pressure increase and MAB decrease
- Pulse pressure decrease and MAB increase

Q20: Someone was diagnosed by atherosclerosis. Which of the following will decrease?

- Systolic pressure
- Arterial compliance??
- Blood volume
- Diastolic pressure ✓

Q21: T wave represents?

- Ventricular depolarization
- Ventricular repolarization ✓

Q22:PR interval?

- Shortens in AV nodal rhythm ✓
- Shortens in AVN block
- (remaining choices were wrong)

Q23:Electrical Ventricular Systole?

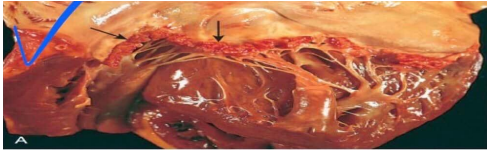
- QT interval ✓

Q24:BP 140/90....

- Pulse pressure is 50 ✓
- Diastolic is 140
- Systolic can't be determined

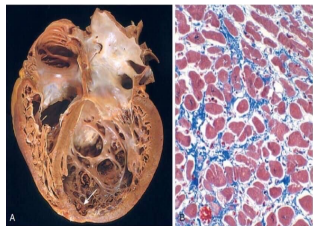
Q25:Identify the structure?

A:Non bacterial thrombotic endocarditis(NBTE)



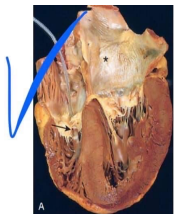
Q26:Identify the structure?

A:Dilated cardiomyopathy(DCM)



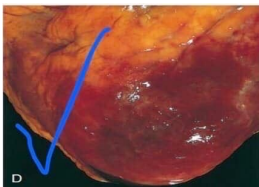
Q27:Identify the structure?

A:systemic hypertensive heart disease

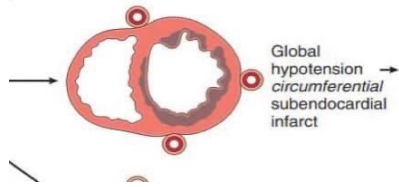


Q28:Identify the structure?

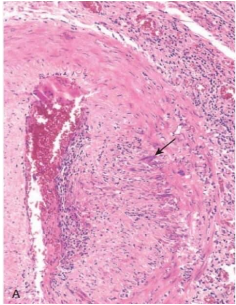
A:Fibrinous pericarditis



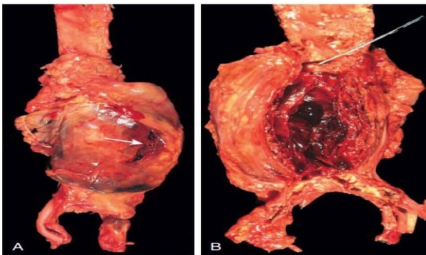
Q29: In this picture the infarction occurs in which blood vessel  
A: circumflex artery



Q30: Identify the structure?  
A: Temporal (giant cell) arteritis



Q31: This aneurysm occurs in which structure  
A: abdominal aorta



Q32: Identify the structure?  
A: Cystic medial degeneration

