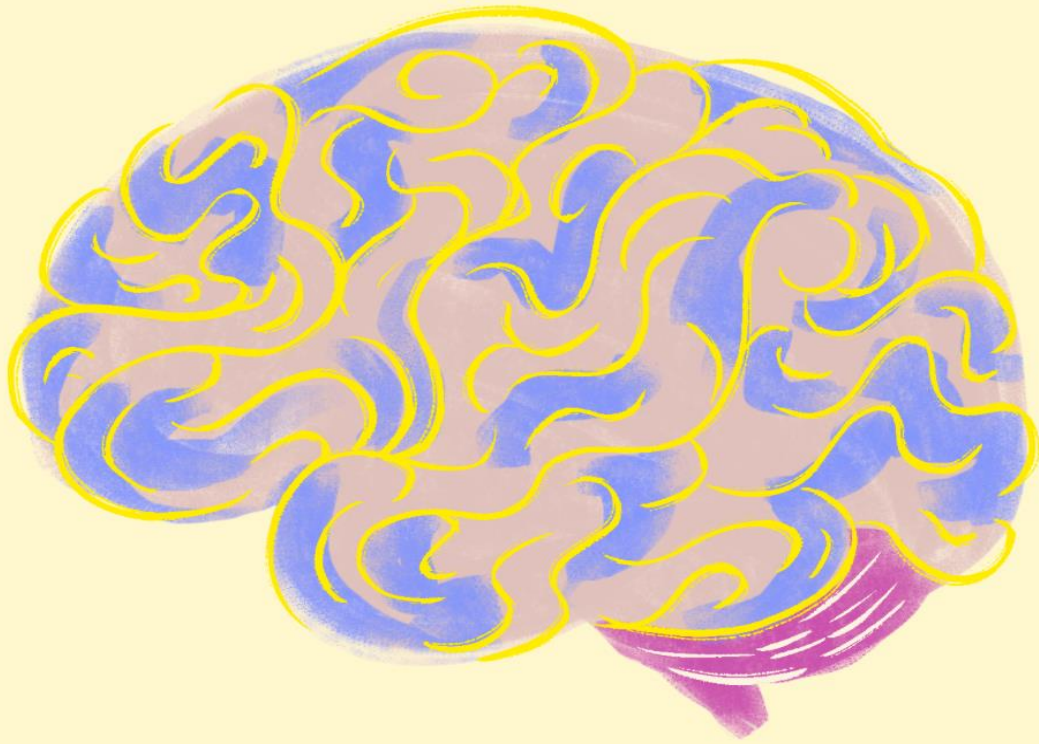


CNS ARCHIVE

Wateen - med & final



Done by ::

الفريق الأكاديمي



ANATOMY



1) Urinary incontinence (lesion of any area ?)

Answer :Paracentral lobule (between the 2 Rami of cingulate sulcus) ✓

2) Genu of cc is supplied by any artery ?

Answer :Ant.cerebral artery ✓

3) Motor area supplied by?

Answer : Middle cerebral artery ✓

4)number of arteries that are sharing in circle of Willis ?

Answer :9 ✓

5)The nerve that have direct relation to the ICA ?

Answer :Abducent nerve CN 6 ✓

6) Which of the following arteries supplies the insula ?

Middle cerebral artery ✓

7)Calcar avis is relation of which part of lateral ventricle ? Answer :Pos. Horn ✓

﴿وَيَسِّرْ لِي أَمْرِي﴾

8)The 2 crura of fornix are connected together by ?

Answer :Commissural fibers

9)Choose the incorrect statement according to 3rd ventricle ?

Answer :Tuber cinereum lies anterior to it

10)one of the following is wrong about 3 ventricle?

Answer :Tectum of midbrain related to the floor of 3 ventricle

11)Choice the correct answer :

A)Cerebrum has 6 poles

B)The cerebrum separated from cerebellum by tentorium cerebri

12)Choice the wrong answer :

Answer :Gyrus rectus located lateral to olfactory sulcus

13)Blood supply of Para hippocampus is:

Answer : PCA

14)Blood supply of Uncus is :

Answer :PCA

15)Section in the medulla oblongata will contain:

Answer :Inferior olivary nucleus ✓

16)Choice the wrong answer :

Answer :Spinal cord occupied the whole length of vertebral column ✓

17)The preganglionic parasympathetic innervation of facial nerve:

Answer :Superior salivary nucleus ✓

18)Solitary nucleus receive s fibers from:

Answer :Glossopharyngeal, facial, Vagus ✓

19)The two temporal lobe connect together by:

Answer :Trunk + anterior commissure ✓

20) All of the following is related to ant horn of lateral ventricle except :

Answer :Thalamus ✓

21) All of the following is an input of hippocampus except :

A. septal nuclei

B. Fastigial nuclei

في همّتك ما يبني أمّتك

C. Dentate gyrus

D. Anterior nuclei

E. Dentate nuclei

HISTOLOGY

1) Which of the following is incorrect?

A) Vestibulo-spinal tract << flexor tone

B) Vestibulo-spinal tract << extensor tone

2) Intralaminar nucleus considered as 3rd order neuron for?

Answer: Lateral spinothalamic tract

3) Regarding lamina de rexed , which of the following wrong ?

Answer : Tract of Lissauer overlaying lamina XI

4) dendrites of pirkinje in which layer :

Answer : Molecular layer

5) pirkinje cell is : Answer : Extension dendrites arborization

6) 75% of the brain neuron is :

Answer : granule cell

عناء اليوم ... لذّة الغد

7) layer of the cerebral cortex in the motor area :

Answer : 2 type of neuron, 6 layer

8) which of the following is incorrect ?

Answer : the mossy fiber constitute the majority of efferent

9) BITZ cells :

a. Internal pyramidal layer

b. External pyramidal layer

10) which of the following that transfer by DC-ML?

a. Conscious proprioception

b. Pain

c. Unconscious proprioception

PHARMACOLOGY

1) Anesthetic drug which has a good analgesic effect+ act as bronchodilator?

Answer : Ketamine


2) Hypnotic drug which has long term management?

Answer : Phenobarbital

3) Which of the following anesthetic drugs cause hepatic toxicity?

Answer :Halothane 

4) Case about man undergo a surgery and he experienced rapid recovery?

Answer :NO 


5)One of the following drugs is COMT?

Answer :Entacapone 

6) Which of the following drugs isn't dopamine receptor agonist ?


Answer :Selegiline 

7) All of the following is true about flumanzile except:

Answer :Patients with suspected benzodiazepine overdose should respond adequately to a cumulative dose of 1-50 mg given over 2-10 minutes; 

8) One of the following is SNRI? Answer :Venlafaxine 

9) All the following is incorrect about buspirone except :

Answer: The drug is used in generalized anxiety states but is less effective in panic disorders 

التفوق تجربة تستحق العناء

10) All the following is correct about mechanism of action for methylxanthines except :

Answer :Stimulation of adenosine receptors

11) a partial agonist at β_2 , α_4 , neuronal nicotinic acetylcholine receptors in the CNS is:

Answer :Varenicline

12) which of the following that tolerance ?

a. Constipation

b. Analgesia

c. Euphoria

d. Sedation

BIOCHEMISTRY

1) Which of the following is correct about Metabotropic Receptors?

Answer :Comprise a single protein subunit, winding cell membrane seven times (transmembrane domains)

2)Which GLU protein is specific for neuron ?

Answer :GLU 3

3)In which conditions the brain depends only on keton bodies ?

Answer :Starvation and DM 1

4)pellicle formation :

TB

5) All of the following true about fate of excess 4.4 mmol of glucose , EXCEPT :

a. Component of BBB

b. Utilized in the synthesis of brain neurotransmitters

6) All of the following true about fate of excess 4.4 mmol of glucose , EXCEPT :

a. Synthesis glycogen in neuron

b. Utilized in the synthesis of glutamate

c. Utilized in the synthesis of GABA

MICROBIOLOGY

1)In HSV encephalitis which of the following is wrong ?

Answer :Decrease the glucose level in blood

2)Which of the following bacteria cause meningitis in the children ?

Answer :S.agalactiae

3)One of the following is wrong regarding to C.neoformas?

Answer :Can be transmitted through person-person

احلم .. اتمنى .. افعل

4) one of the following is wrong about acanthamoeba + balamuthia :

Answer :Only cyst can be found in biopsy

PHYSIOLOGY

1)The nuclear-bag fibers of muscle spindles are innervated by :

- a. A γ nerve fibers
- b. A β nerve fibers
- c. A delta nerve fibers
- d. Ia nerve fibers

2) Muscle spindles :

- a. are found in all skeletal muscles
- b. are found only in large skeletal muscles
- c. consist of small numbers of extrafusal muscle fibers
- d. consist of a large number of extrafusal muscle fibers

3) The central ends of afferents from muscle spindles synapse with all the following types of neurons, except :

- a. α -motor neurons of the same muscle
- b. γ -motor neurons of the same muscle
- c. local interneurons
- d. 2nd order neurons of ascending sensory pathways

4) Concerning sleep:

- a. It takes about 16 hours in old person.
- b. it takes about 8 hours in children
- c. It takes about 6 hours in normal adults
- d. Facilitated by fatigue and cold exposure.
- e. It shows circadian rhythm synchronized with daily dark light cycle

5) Cerebellar ataxia is manifested by all the following. EXCEPT

- a. dysdiadochokinesia
- b. static tremors
- c. dysmetria
- d. staccato speech

6) all the following CONSIST to declarative conscious EXCEPT:

- a. Body memory
- b. Short memory
- c. Long memory

7) Enkephalin release by : Answer : Peri aqueduct grey matter

8) GABA is : Answer : Principal inhibitor

9) all the following is correct about Neuroplasticity except :

A) Learning

B) stroke rehabilitation

C) Neurotransmitter switch behavioral changes

D) gait slowness

PATHOLOGY

1) Blue cell tumor is :

Answer : Medulloblastoma

2) pilocytic astrocytoma:

Answer : Well differentiated cystic mass in child cerebellum

3) Border zone ("watershed") infarcts usually seen after:

answer : hypotensive episodes

4) hemangioblastoma, renal cyst , renal carcinoma :

A) Tuberous sclerosis

B) Von Hippel-Lindau

C) Li-Fraumeni – inherited



EMBRYOLOGY

1) One of the following disease isn't type of spinal bifida ?

Answer :Encephalocele



اللَّهُمَّ أَنْفَعْنِي بِمَا عَلَّمْتَنِي، وَعَلِّمْنِي مَا يَنْفَعُنِي، وَزِدْنِي عِلْمًا

الطبيب والجراحة
لجنحة



رّوح
CNS
MODULE
Mid

Done by:

BayanMahmoud



Pharma (anti-Parkinson)

1)all anti-Parkinson except:

- A) Levodopa
- B) Amantadine
- C) Bromocriptine
- D) Serotonin
- E) tolcapone

Ans:d

Pharma (anti epileptic drug)

2)Drug used for herptic neuralgia and diabetic neuropathy?

- A) carbamazepine
- B) phenytoin
- C) valproate
- D) Gabapentin

ans:a

3) Valproic acid mechanisms?

- A) Inhibition of GABA transaminase
- B) prolong Na⁺ channels activation
- C) activation of T-Ca⁺ channels
- D) increase Decreased excitatory amino acid

Ans:a

4)All about CSF of bacteria true EXCEPT :

- A) Lactate > 35
- B) Lymphocyte predominant
- C) Markedly decrease glucose
- D) Elevated WBC,s

ans:b

Medicine

5)Not risk factor for stroke

- A) atrial fibrillation
- B) hypertension
- C) mitral prolapse
- D) previous TIA
- E) diabetes

Ans:c

6)In which of the region that posterior spinocerebellar tract is absent :

- a) Cervical
- b) Thoracic
- c) Lumbar

ans:c

7) Brain supply ,except ?

- A) thalamus ..PCA
- B) motor foot .ACA
- C) motor hand.MCA
- D) centre micturition..MCA

ans:d

Pharma(antidepressants drug)

8)all are antidepressants except?

- A) Selective serotonin re-uptake inhibitors (SSRIs)
- B) Atypical antidepressants
- C) Serotonin/norepinephrine re-uptake inhibitors(SNRIs)
- D) glutamate excitation
- e) Monoamine oxidase inhibitors (MAOs)

ans:d

9)all are SSRI except:

- A) fluoxetine
- B) fluvoxamine
- C) citalopram
- D) duloxetine
- E) escitalopram

Ans:d

10)Neurotransmitter in alzahimer ?

- A) ach
- B) glutamate
- C) dopamine
- D) serotonin

ans:a

11)The sensation of temperature is signaled mainly by warm and cold receptors whose sensory fibers travel in association with the sensory fibers carrying pain signals. Which of the following statements best characterizes the transmission of signals from warm receptors?

- A) Warm receptors are well characterized histologically.
- B) Signals from warm receptors are mainly transmitted along slow-conducting type C sensory fibers.
- C) Warm receptors are located well below the surface of the skin in the subcutaneous connective tissue.
- D) There are 3 to 10 times more warm receptors than cold receptors in most areas of the body.

ans:b

12)not show in the floor of fourth ventricle :

- A)abducent**
- B)facial nerve nucleus**
- C)vestibular**
- D)dorsal nucleus of vagus**
- E)hypoglossal nucleus**

Ans:b

13)About (parasympathetic)GVE , what is correct?

- A)Edinger-Westphal nucleus supply extraocular**
- B)sup salivary nucleus in pons**
- C)inf salivary nucleus carried by hypoglossal**

Ans:b

14)Faler of forebrain to devide into 2 cerebral hemisphere

- A- holocencephaly**
- B- lissencaphaly**
- C- chairi 1 malformation**
- D- dany walker malformation**

Ans:a

15)All the following diseases associated with acanthemoba species except

- A- primary ameboic meningio encephalitis**
- B- keratits**
- C- chronic granulmatous infection of the skin**
- D- granulmatous ameobic encephalitis**

Ans:a

16)patients take thiamine for endoscopy, who will develop side effect

- A- 12 years old with otitis media**
- B- 10 years old with sinusitis**
- C- 9 years old with asthma**
- D- 8 years old first time to take it**

ans:c

17)Which of the following is the basis for referred pain?

- A)Visceral pain signals and pain signals from the skin synapse with separate populations of neurons in the dorsal horn**
- B)Visceral pain transmission and pain transmission from the skin is received by a common set of neurons in the thalamus**
- C)Visceral pain signals are rarely of sufficient magnitude to exceed the threshold of activation of dorsal horn neurons**
- D)Some visceral pain signals and pain signals from the skin provide convergent input to a common set of neurons in the dorsal horn**

ans:d

18) In breastfed neonate the primary and main source of energy is numerous

- A- glucose only**
- B- ketone body**
- C- glucose, acetoacetate, B hydroxybutyrate**
- D- mannose**

Ans:c

19) Which cerebellar nuclei is the most medial?

- a) Emboliform**
- b) Dentate nucleus**
- c) Fastigial**
- d) Globosus**

Ans:c

20) If Wernicke's area is damaged what will happen?

- a) visual disturbance**
- b) write disability**
- c) loss of language**
- d) loss of language comprehension**

Ans:d

21) Drug use in schizophrenia and psychotic disorder is?

- a) Direct dopamine receptor Antagonists**
- b) Serotonin selective re-uptake inhibitors**

Ans:a

22) (Case) patient suffers from hallucinations, delusions and he became quite and isolated, he received haloperidol that is considered to improve?

- a) delusions**
- b) negative symptoms**
- c) depression**

ans:a

23) All of the following statements about the body of the corpus callosum are correct, except:

- A) lower surface attached to septum pellucidum**
- B) lower surface related to lateral ventricle**
- C) separated from cingulate gyres by cingulate sulcus**
- D) connects parietal lobes on both sides**

Ans:c

24) One of the following is true about Negleria fowleri

- A- its opportunistic disease**
- B- flagellate form found in water is invasive stage**
- C- trophozoite eaten bacteria found in great numbers in CSF**
- D- the cyst is round with pores in its wall found in brain**
- E- cause keratitis that may require keratoplasty**

ans:c

25) All of the following are INCORRECT related to Non-REM sleep except?

- a) Raphe-nuclei is the center of Non-REM sleep
- b) center of REM sleep is solitarius nucleus

Ans:a

26) Exner area responsible of

- A- vision
- B- auditory
- C- mathematical solving and writing
- D- speech

Ans:c

27) Vestibular Nucleus that contains an extremely large nerve cells called the giant cells of Deiters?

- a) lateral nucleus
- b) inferior
- c) Superior
- d) medial

Ans:a

28) One is Correct related to superior petrosal sinus?

- a) it runs along its attachment to the petrous bone
- b) runs along free border of tentorium cerebelli
- c) runs along attachment of falx cerebri

Ans:a

29) Failure of forebrain to divide into 2 cerebral hemispheres?

- a) Anencephaly
- b) Lissencephaly
- c) Holoprosencephaly
- d) Craniorachischisis
- e) Dandy-Walker malformation

Ans:c

30) Is the most important component of BBB?

- a) continuous basement membrane
- b) fenestrated endothelial cells
- c) Astrocytes send processes called end-feet
- d) Glia limitans perivascularis

Ans:d

31) All of the following originated from Neural Crest except?

- a) Melanocytes
- b) oligodendrocytes
- c) sphenoid bones
- d) Schwann cells
- e) sensory cell

Ans:b

32) One is INCORRECT?

a) thalamus gland appearance is called brain sand ✓

33) Which one is Catechol-O-methyltransferase?

Tolcapone ✓

34) Which is true about sodium Valproate?

a) Inhibition of GABA transaminase ✓

35) The most sensitive neurons to transient global ischemia?

Cerebellar purkinji cells. ✓

36) How much brain consume glucose of Total body glucose?

- a) half
- b) one quarter
- c) two thirds
- d) one third

Ans:b

37) Which of the following does not happen in brain?

- a) pyruvate convert to lactate
- b) pyruvate convert to acetyl-COA
- c) lactate convert to pyruvate
- d) glucose phosphorylation to G6P
- e) G6P dephosphorylation to glucose

Ans:e

40) One is not true regarding to N.fowleri?

- a) Primary amoebic meningo-encephalitis.
- b) opportunistic parasite
- c) cyst: round with pores on its wall
- d) lyse and ingest brain tissue

Ans:b

41) One of the following is not caused by Acanthamoeba?

- a) chronic granuloma of the lung
- b) keratitis
- c) primary amoebic meningioencephalitis
- d) Granulomatous amoebic encephalitis

Ans:c

42) Related to the ant. Commissure all of the following are true except?

- a) in front columns of fornix
- b) connect olfactory bulb
- c) connect hippocampus
- d) connect uncus
- e) connect ant. Perforated substance

Ans:c

43) One is CORRECT about A.cerebral artery?

- a) Supply area of hamstrings muscle
- b) supply area of thenar muscle

ans:a

44) All of the following are true except?

- a) trunk of post. Cerebral artery supply 3rd ventricle
- b) trunk of Corpus Callosum connect the parietal lobes on both sides
- c) Corpus Callosum separated from Cingulate gyrus by Cingulat sulcus

Ans:c

45) tonsils:

- A. anterior lobe in superior surface
- B. post. l in inf surface
- C. flocculonodular lobe

Ans:b

46) terminal ventricle:

- A. dilatation of central canal in spinal cord
- B. dilation of subarachnoid space in spinal cord

Ans:b

47) One of the following not neural crest in origin

- A- sphenoid bone
- B- adrenal medulla
- C- melanocyte

Ans:c

Pharmac (DR NASHWA)

48) Antipsychotic for schizophrenia and psychosis

- A) serotonin reuptake inhibitors
- B) post synaptic dopamine antagonist

Ans:b

49) anesthesia mechanisms?

- A) direct act on GABA-A
- b) potentiate GABA in GABA-A with no direct effect on receptor
- c) activation of nicotine on K⁺ currents
- d) increase chloride efflux

Ans:a

50) Which nerve emerges from beginning of the middle cerebellar peduncle?

- a) VI n.
- b) V nerve
- c) XII
- d) VI
- e) VII n.

ANS:B

51) One of the following is low grade of meningioma?

- a) secretory
- b) Rhomboid
- c) choroid
- d) clear cell

Ans:a

52) the cause of aphasia damage in which area?

- a) Broca's
- b) Exner's
- c) premotor area
- d) wernicke's area

Ans:a

53) (Case) the injury ery between thalamus and lenticular nucleus?

- a) ant. Limp of internal nucleus
- b) post. Limp of internal nucleus
- c) caudate nucleus
- d) corpus callosum

ans:b

54) Post .spinocerebellar disappears in?

- a) upper thoracic
- b) lower thoracic
- c) lumper
- d) cervical
- e) sacral

Ans:c

55) Which one doesn't share in Glomeruli?

- a) Golgi cell axon
- b) Golgi cell dendrite
- c) Granule cell dendrite
- d) Granule cell axons
- e) mossy fibers

Ans:a

56) One of the following is INCORRECT?

Zolpidem use in acute anticonvulsant ✓

57) The sensation of temperature is signaled mainly by warm and cold receptors whose sensory fibers travel in association with the sensory fibers carrying pain signals. Which of the following statements best characterizes the transmission of signals from warm receptors?

A) Warm receptors are well characterized histologically.

B) Signals from warm receptors are mainly transmitted along slow-conducting type C sensory fibers.

C) Warm receptors are located well below the surface of the skin in the subcutaneous connective tissue.

D) There are 3 to 10 times more warm receptors than cold receptors in most areas of the body.

ans:b

Embryo

58) not from neural crest?

A) Melanocytes

B) Adrenal medull

C) sensory nerve from dorsal ganglion

D) oligodendrocytes

E) sphenoid bones

Ans:d

59) one hemisphere seen in?

A) Lissencephaly

B) Holoprosencephaly

C) Chiari I malformation

Ans:b

60) Patient feel like its the worst headache ever :

Aneurysm

61) All are True except :

Calcification of pulvinar called brain sand

62) Nuclei called Dieters

- Lateral vestibular n.

63) One is True about Inferior colliculus:

- Aqueduct is surrounded with quadrangular area of grey matter

Surgery

64)management for delay cerebral ischemia in subarachnoid haemorrhage?

- A) hypervolemic-hypertensive-hemodilution therapy**
- B)labetalol**
- C)oral nefidipine**
- D)nitropusside**
- C)oral Nepdine**

Ans:a

65)(--- that GSA below?)

8

66)Superior petrosal sinuses runs along?

- A)attachment of falx cerebri+tentorim cereblli**
- B)attachment falx cereblli+tentorim cereblli**
- C)attachment tentorim cereblli at occipital bone**
- D) attachment tentorim cereblli at Petrous bone**

Ans:d

67)Vessel involved in fronto-temporal epidural hematoma

- Middle meningeal a.

68)One of the following is a low grade of meningioma :

- Secretory

69)Which of the following related to superior thalamus?

- A.Anterior horn of lateral ventricle**
- B.Cavity of third ventricle**
- C.Tela choroida**

Ans:c

70)Tumor widely spread between lentiform n and thalamus ,, one get effected

- post limb of IC

Pharma (DR Mohamed)

71)5 person have given anaesthesia, which one we carried about when given thiopental ?

- A)5-years with otitis**
- B)7-years with sinusitis**
- C)9-years with asthma**
- D)11-years with anaemia and chronic disease**
- E)15-years not received anaesthesia**

ans:c

72)patient taking 2 tablets from lorazepam, doctor says he is in toxicity state , what appropriate action ?

- A)gastric lavage**
- B)iv Flumazeni**
- C) IV. sodium bicarbonate**

Ans:b

73)All of the followin according to dynamic stretch reflex are correct EXCEPT

- a.Tendon jerk**
- b.stimulated by sudden tap on tenon**
- c.Receptors are nuclear bag**
- d.discharge flower spray fibers "مش متأكدة من صيغة الخيار"**

Ans:d

74)Cerebral tissue utilize .. Of total body glucose utilization:

- a.Quarter**
- b.Two quarter**
- c.Third**
- d.Half**

Ans:a

Pharma

75)Patient 36 years old - he smokes 2 packs of cigarettes, he tried to stop smoking by using patches but unsuccess , what medication benefit in this case

- A)phenelzine**
- B)bupropion**
- C) imipramine**
- D) Buspirone**
- E) citalopram**

ans:b

Pharma (DR JEHAN)

76)all are true about Buprenorphine except:

- A) 25-50 times more potent than morphine**
- B)lingual or Sublingual route**
- C)can used during labor**
- D) Postural hypotension is marked**
- E) Long lasting pain- cancer**

Ans:c

77)used for paralyticileus

- A) Alvimopan"**
- B)fantynyl**
- C) Tramadol**
- D) Methadone**
- E) Pethidine**

Ans:a

78)withdrawal of nicotine :

Answer : clonidine

79)Supragranular layers ???

I III III

80)One is INCORRECT?

Spinal cord end in L3 in adult

81)which one is correct about gray matter:

- a.myelinated axons & few unmyelinated axon and neuroglia**
- b.bodies of nerves cells , dendrites , unmyelinated axons and neuralgia**
- c.bodies of nerves cells , dendrites , myelinated axons and neuralgia**

Ans:b

82)Cerebellar ataxia is manifested by all the following. EXCEPT

- A.dysdiadochokinesia**
- B.static tremors**
- C.dysmetria**
- D.staccato speech**

ans:b

83)A 45-year-old woman has had unilateral headaches on the right for the past 5 months.

Physical examination yields no remarkable findings. The representative gross appearance of the lesion seen on CT scan of the head is shown in the figure. The mass is surgically removed and microscopic examination shows elongated cells with pale, oblong nuclei and pink cyto- plasm with occasional psammoma bodies.

Cytogenetic analysis shows 22q. What is the most likely diagnosis?

- A Astrocytoma**
- B Ependymoma**
- C Meningioma**
- D Metastasis**
- E Tuberculoma**

Ans:c

84) Which artery supply major part of cerebral hemisphere?

- A. Anterior cerebral artery**
- B. Posterior cerebral artery**
- c. Middle cerebral**

Ans:c

85) Major part of blood brain barrier → Glial limitans perivascularis

86) All are false according to sedative hypnotics EXCEPT

- A. Phenobarbital long acting on Cl channels**
- B. Lorazepam activate GABA A directly**

مش متذكرة باقي الخيارات بس كانوا واضحين إنهم غلط، هذول حسيت الثنين صح

87) on the level of inf. Colliculus ; we found:

- a. The aqueduct is surrounded with quadrangular area of grey matter**
- B. Red nucleus at the mid**
- c. 3 lemnisci present**
- D. Dorsal & ventral decussation**

Ans:a

88) the last lig in vertebral column is:

- A. supraspinous lig**
- B. interspinous lig**
- C. lig flavum**
- D. dura Mater**
- E. anterior intervertebral**

ans:c



CNS Final Exam

2024 - 2025

Done by:

Khalid Bayaydah

Designed by:

Razan fawwaz

Lateral part of frontal lobe blood supply >> middle cerebral

1. Tela chorioidae situated :

A. Body of the central canal.

B. Roof of the inferior horn of the lateral ventricle.

3. superior surface of the thalamus and the body fornix.* علاغلب

4. Which of the following is true about C. Neoformans:

1. ingestion of its spores cause systemic manifestation.

2. Produce mucoid colonies by culturing on Sabouraud dextrose agar *

5. which of the following drugs contraindicated with stroke case:

1. ketamine*

2. halothane

3. desflurane

6. If you have a bout of diarrhea on your way to work; The recommended drug to buy from a drugstore?

1. loperamide*

7. One of the following not an histological feature of oligodendroglioma:

1. nuclear pseudoinclusion*

2. clear cytoplasm.

3. fried egg appearance

4. thin walled blood vessels

8. A patient who bought street drug yesterday comes to you and he is showing signs of diarrhea, dilated pupils and he is agitated, These symptoms may have appeared due to which of the following :

A. Cocaine overdose

B. Opioids overdose

C. Withdrawal symptoms due to Opioids abstinence *

10. which of the following have no relation to the thalamus:

A. Posterior limb of internal capsule

B. Lentiform nucleus

C. Body of corpus callosum*

11. not a boundary of the 3rd ventricle:

A. Optic tract*

B. mamillary body

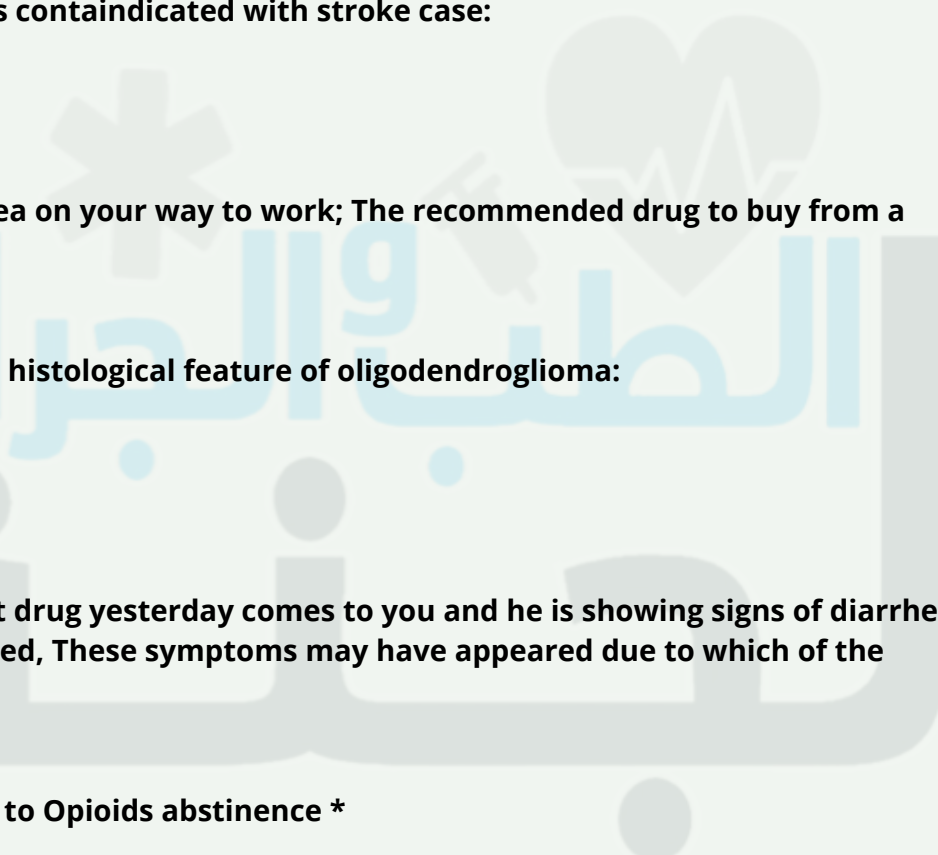
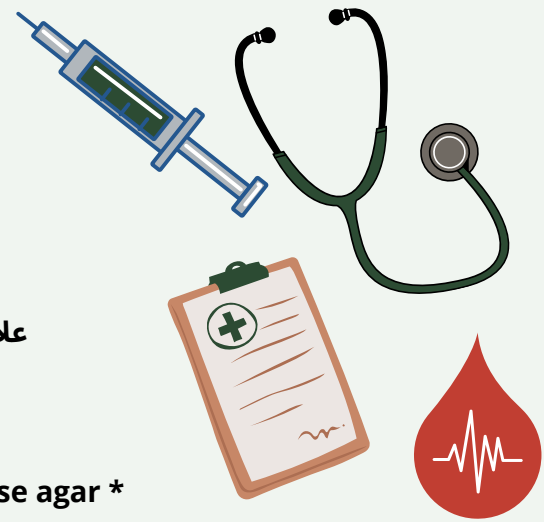
3. Tegmentum of the midbrain

12. Outerband of ballilarger:

Internal granular*

13. Best definition of sulci:

Depths in the cerebral cortex for increasing surface area*





14. 3rd layer of the midbrain at the superior colliculus:
Stratum opticum*

15. Meningitis in infants is commonly due?
Streptococcus agalctiae *

16. facial colliculus found at:
Lower level of pons*

17. A doctor suspects that a patient is with subarachnoid hemorrhage even though the CT scan is normal, the best next step is:

- A. MRI
- B. Lumbar puncture and CSF analysis*
- C. Cranial doppler ultrasound

18. one of the following not supplied by the anterior cerebral artery:

- A. Lateral part of frontal lobe*
- B. Medial part of frontal
- C. Medial part of parietal

20. The mother of a child suffering from absence seizures came to a doctor clinic اشفي مثل هيك the recommended drug to prescribe:
A. ethosuximide

- Which of the following is correct about metabotropic receptors? Answer: Comprise a single protein subunit, winding cell membrane seven times (transmembrane domains)
- Pellicle formation: TB

Not found in cerebral tissue?

- 1) HMG-CO synthase*
- 2) glucose
- 3) SCOT
- 4) lactate

GABA main function?

- 1) main inhibitory*
- 2) main excitatory

Supplying muscle of mastication?

- 1) ant cerebral artery
- 2) middle cerebral artery*
- 3) posterior cerebral artery

Which of the following white matter is not related to the thalamus

- A. Body of corpus callosum*
- B. Hypothalamus
- C. Stria habenularis
- D. External medullary lamina
- E. Stratum zonale

Lesion in middle cerebral artery produce damage to?

- 1) motor coordination and balance
- 2) production and comprehension of language*
- 3) visual damage

The nerve supply of nuclear bag of muscle spindles is:

- A. A-alpha
- B. A-beta
- C. A-delta
- *D. 1-a
- E. 2

Postnatal development of BBB?

- 1) astrocyte
- 2) pericyte
- 3) astrocyte + pericyte*
- 4) microglial

palisading necrosis

ناسيه صيغة السؤال

GBM *

Meningioma

cryptococcal neoformans

gram neg

csf culture on sabouraud dex agar show mucoid colonies*

urease neg

csf examination by using india ink , treat by antibiotic

(في ingestion spores)

جزء مو من ال limbic system

cerebellum

drug of choice to treat absence seizures

ethosuximide

All the following are true except

- A- csf produced from 3rd , 4th ventricle and subarchinoid space *
- B- csf go to blood through villi

All the following related 3rd ventricle except

- A- tegmentum *
- B- posterior commissure

All the following are true about hypothalamus except:

- A- have vertical part
- B- its horizontal part form the floor of the lateral ventricle
- C- subthalamus sulcus between it and thalamus*



الطبيب والجراحة

White matter that connects uncus with anterior perforated substance

- A- corpus callosum
- B- anterior perforated substance
- C- cingulum *
- D- uncinete fasciculus

Cortex of vermis influence on

- A- coordination of movement of upper limbs
- B- coordination of movement of long axis *
- C- conscious assessment of movement error
- D- planning sequential movement

Third layer of superior colliculus:

- A) stratum zonale
 - B) stratum griseum superficial
 - C) stratum opticum*
 - D) stratum griseum mediate
- About holocencephaly

A- failure of forebrain to divide into 2 cerebral hemispheres

One of the following present in the anterior horn of thoracic segment:

- A) central group
- B) anterior medial group*
- C) antero-lateral
- D) postero-lateral

Axons of the largest pyramidal cells supplying the digits arise from:

- A) Betz cells*

One of the following is true about lumbar segment:

- A) central canal anterior
- posterior horn thin and diverging
- C) gray matter abundant compared to white matter *
- D) don't have lateral horn

Patient with schizophrenia taking clozapine, what adverse effect should be in caution

- A- agranulocytosis *
- B- extrapyramidal symptoms

One of these drugs is MAO-B inhibitors

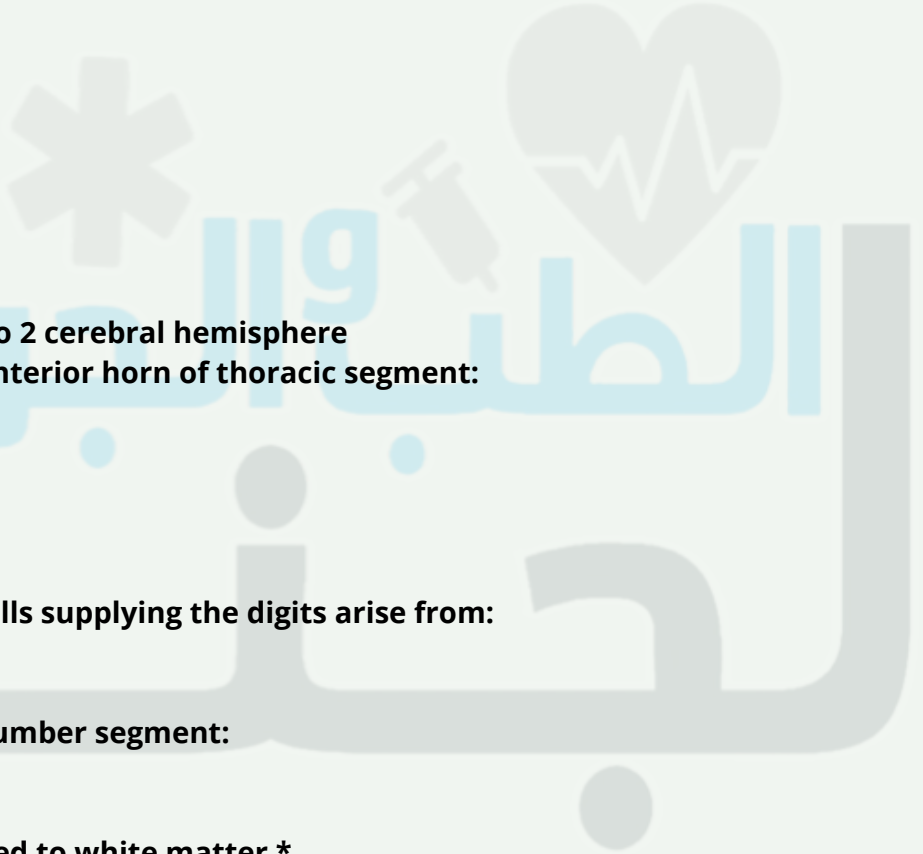
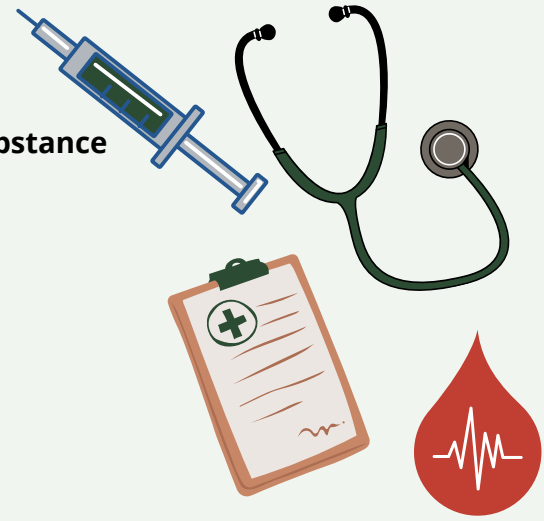
- A- selegiline *
- B- L-dopa

One of the following is false

- A- amantadine increases release of dopamine and reuptake *

Choose the incorrect answer:

- A- beneserizide crosses BBB *



One of the following cells present in a purkinje layer:

- A) Candelabrum cells*
- B) Unipolar Brush cells
- C) Stellate cells

One of the following is not generated from neural crest ?

- a) aorticopulmonary septum
- B)otic ganglia
- c) Odontoblasts
- d) dura matter*

What is CORRECT related to Martinotti Cell?

- a) They have very short many dendrites
- b) large spindle neurons present mainly in deepest layers
- c) their axons extend towards the surface and bifurcate to forming synapse with pyramidal*
- d) they send excitatory signals

(Case) patient fall and suffer from lower back pain ,in examination revealed that L3 nerve is damaged when exits from ?

- a) Pedicles between L3 -L4 vertebrae *
- b) laminae between L2 -L3 vertebrae
- c) Pedicles between L2 -L3 vertebrae
- d) laminae between L3 -L4 vertebrae

One of the following is SNRI drug?

- a) Sertraline
- b) Paroxetine
- c) venlafaxine*
- d) Citalopram
- e) imipramine

Which of the following drugs is Monoamine Oxidase Inhibitors?

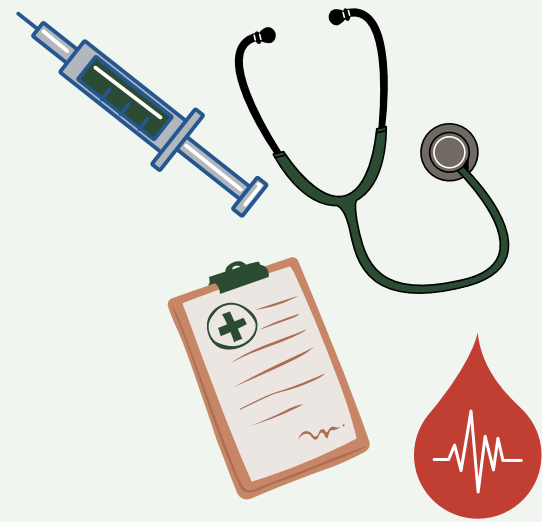
- a) Citalopram
- b)selegiline*
- c) Amitriptyline
- d) Doxepin

Which artery run in callosal sulcus?

- a)ACA *
- b)MCA
- c) PCA
- d) Internal Cerebral Artery

One of the following dose not share in circle of Willis ?

- a) Posterior cerebral Artery
- b) middle cerebral artery *
- c) Anterior communicating Artery
- d) Anterior cerebral Artery
- e) internal carotid artery



الطبيب والخبيرة
بجنتة

Tumor in Vestibuloocchlear nerve which cranial nerve of the following will be affected ?

- a) Hypoglossal
- b) Vegus
- c) Abducens
- d) facial*
- e) Occulo-motor

7 years old child has ADHD which of the following is the drug of choice ?

- a) Morphine
- b)Amphetamine
- c) Atomoxetine
- d) Methylphenidate*

Patient is examined by CT which reveals no Suparchnoid hemorrhage what the next test should be done to confirm the diagnosis?

- a) MRI
- b) lumbar puncture to test CSF*
- c) PCR
- d) biopsy

One of the following is norepinephrine & serotonin reuptake inhibitors

- A- citalopram
- B- venlafaxin *
- C- fluvoxiamine
- D- sertraline

Epidural hemorrhage appear in MRI as

- A- semilunar hypercondense
- B- semilunar hypocondinse
- C- biconcave hypercondinse
- D-biconvix hypocondinse*

You had an exam and had diarrhea go to pharmacy and ask for opioid overcounter what is it

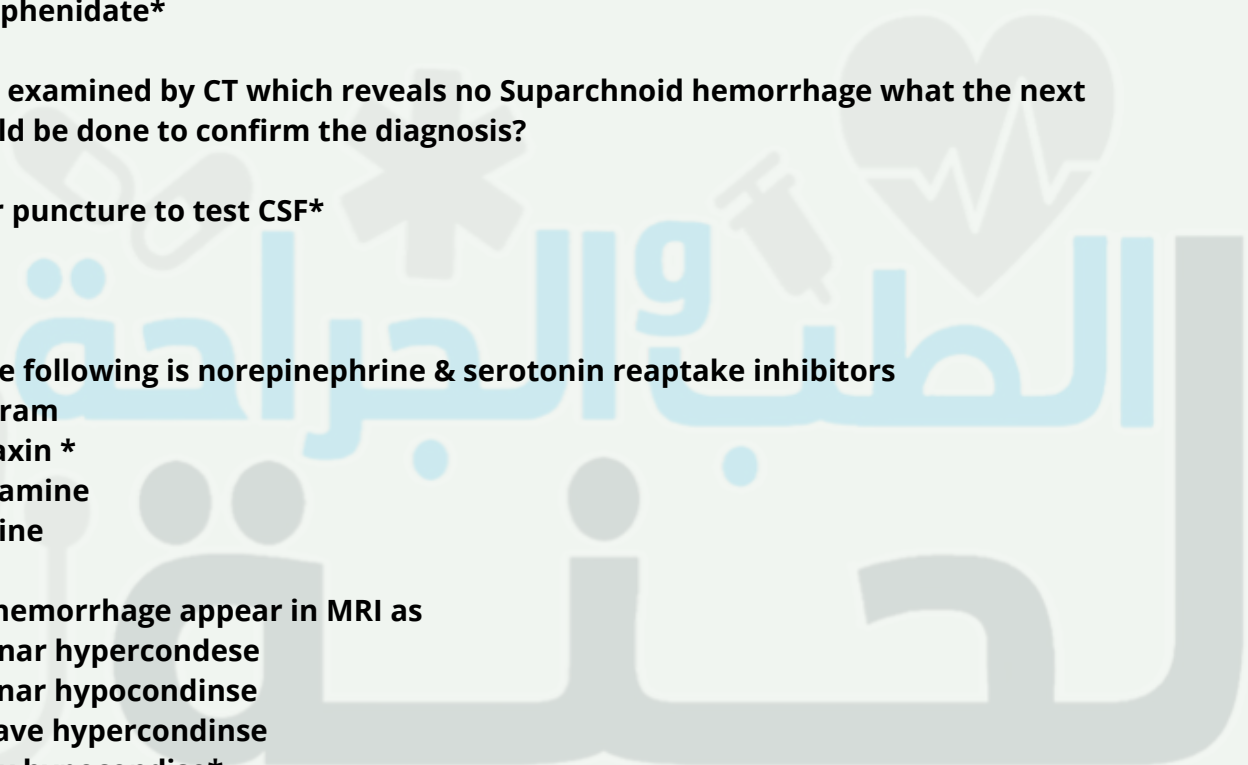
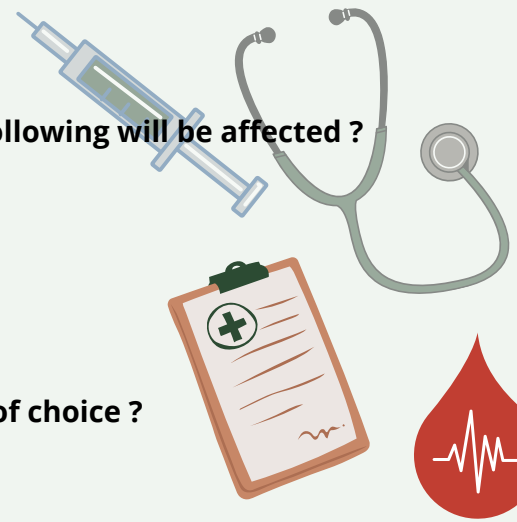
- A- loperamide *
- B- alvimopan

All the following results from lesion in kluger bucy syndrome except

- A- nystagmus *
- B- tameness
- C- loss of fear reaction
- D- tendency to examine everything orally
- E- placidity

The pia matter separated from the neural tissue by:

- A) astrocytic processes*



One of the following is true

- A- catecholamine drug increase RAS activity *
- B- corticofugal decrease RAS activity
- C- sensory signal decrease RAS activity
- D- stimulation of sleep center increase RAS activity

True about fine touch

- A- stereognosis by giving familiar object *
- B- tactile localization by 2 touch applied simultaneously

One of the following true regarding neurotransmitters

- A- gaba is inhibitory *

The most sensitive neuron to transient global ischemia

- A- cerebellar pyrkinji cell

Watershed infarct result from

- A- hypertension
- B- hypotensive episode *

Woman with headache, a mass beneath dura matter you take sample from meninges, what you will found?

- A- psammoma body

Wrong about ataxia:

- A) Dysmetria
- B) Dys-diadokokinesia
- C) Nystagmus
- D) static tremor*
- E) Zigzag gait

All of the following found in premotor area 6 ,except:

- A) Broca's area
- B) Head rotation area
- C) Hand skilled area
- D) Exner's area 45
- E) Area 8 (frontal eye field)*

Which nucleus of the following responsible for proprioceptive sensation in the head?

- a) mesencephalic nucleus*
- b) Vegus nucleus
- c) vestibular nucleus
- d) spinal nucleus of Trigeminal
- e) solitary nucleus

واكيد كانت بدھا الصح theories of sleep السؤال بس كان عن ال

- A) Active theory seems to be the real mechanism of sleep.*
- B) Passive theory seems to be the real mechanism of sleep
- C) metabolic theory nhibition of the RAS by fatigue
- D)passive theory means inhibition of the RAS by signals discharged from certain centers.





اللهم اهدنا فيمن هديت، وعافنا فيمن عافيت، وتولنا
فيمن توليت، وبارك لنا فيما أعطيت، وقنا واصرف عنا
برحمتك شر ما قضيت، إنك تقضي ولا يقضى عليك، إنه لا
يذلُّ من واليت، ولا يعزُّ من عاديت، تباركت ربنا
وتعاليت، لك الحمد على ما قضيت، ولك الشكر على ما
أعطيت، نستغفرك اللهم من جميع الذنوب والخطايا
ونتوب إليك، لا ملجأ ولا منجى منك إلا إليك.

**وتظل تسعى جاهداً في همةٍ
والله يعطي من يشاء إذا شكر**