

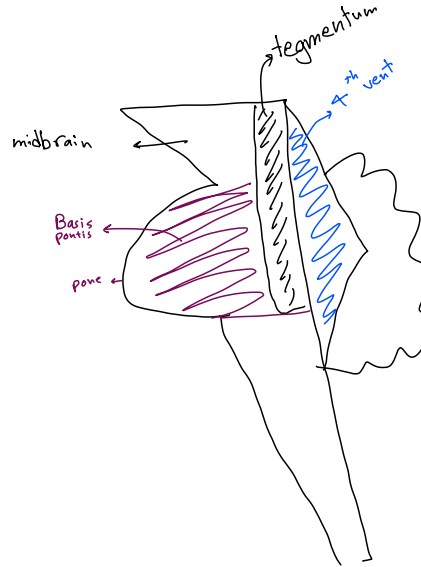
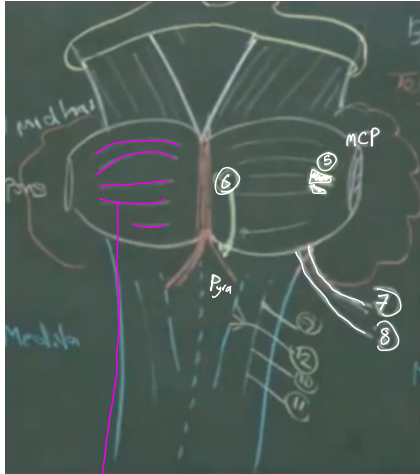
PONS

CAUDAL PART

ROSTRAL PONS

anterior part (Basis Pontis)

posterior part (Tegmentum)



AT THE LEVEL OF THE TRIGEMINAL NERVE

- **Motor nucleus of the trigeminal nerve:** Lies in the lateral part of the floor of the 4th ventricle.
- **Main sensory nucleus of the trigeminal nerve:** Reaches its maximum extent in the pons and it lies lateral to the motor nucleus.
- **Superior cerebellar peduncles** form the lateral boundary of the 4th ventricle

pontocerebellar fibres

→ numerous transversely oriented fascicles
 → origin (pontine nuclei) scattered cell groups
 → pass to → middle cerebellar peduncle, contralateral side of the cerebellum

Pontine Nuclei:

Are small masses of nerve cells, receive cortico pontine fibers. Their axons form the transverse pontocerebellar fibers which pass to the contralateral side of the cerebellum through Middle Cerebellar peduncles.

Bundles of corticospinal & corticonuclear fibres (Pyramidal fibres)

The ascending fibres of the medial lemniscus

become separated from the pyramid and displaced dorsally.

The Medial Lemniscus rotates 90 degrees and lies almost horizontally.

It contains spinal tract & nucleus of Trigeminal.

Deep origin of cranial nerve nuclei:

- **Abducent nucleus** 6 (medial)
- **Facial motor nucleus** 7
- X Trigeminal