

Shagaf

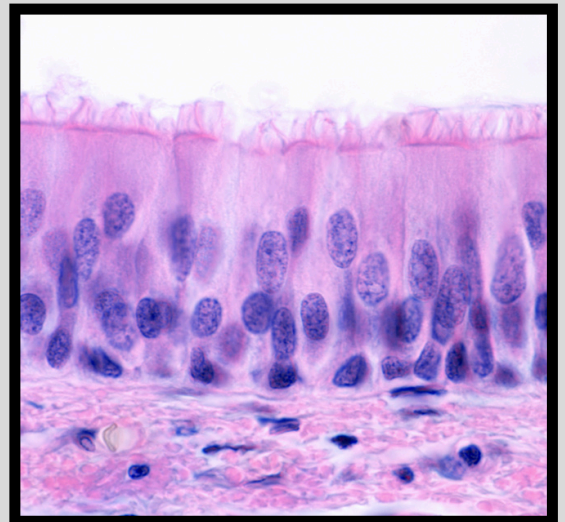
Histology Mid

Done By :

عبد العزيز بدر

Designed By :

Raneem Dmour



1) The type of Epithelial tissue in "oviduct":

simple squamous

simple cuboidal

simple columnar ciliated ✓

transitional

2) What is the type of respiratory epithelium ?

pseudostratified columnar ciliated ✓

transitional

simple columnar ciliated

stratified cuboidal

3) Tissue responsible about friction:

stratified squamous keratinized ✓

stratified columnar

Transitional

stratified cuboidal

4) sebaceous glands are example of:

simple tubular

simple alveolar

simple branched tubular

simple branched alveolar ✓

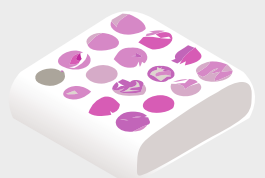
5) Function of Myo-epithelium:

protection

contraction ✓

extraction

reproduction



6) Tissue has smooth surface?

Mesothelium ✓

simple columnar non ciliated

pseudostratified columnar ciliated

transitional

7) Main type collagen in basal lamina?

Collagen II

Collagen V

Collagen IV ✓

non of the above

8) Mesothelium:

simple squamous epithelial cells that line cardiac muscle ✓

simple squamous epithelial cells that line alveolar

simple columnar ciliated

stratified squamous

9) Transitional epithelium classified as:

stratified ✓

simple columnar

simple squamous

pseudostratified

10) Reticular fibers stained with:

silver ✓

orcein

toluidine blue

sudan III



11) Reticular fibers present in:

collagen III ✓

collagen I

collagen VII

collagen II

12) about collagen synthesis in the RER there are:

two α chains

three. α chains ✓

three. β chains

two. α chains and β

13) Monocyte differentiates in the tissue into:

mast cell

macrophage ✓

fibroblast

fibrocyte

14) one of the following is correct about Mast cells:

nucleus obscured by cytoplasmic

organelles ✓

granules stained blue with toluidine blue

large nucleus

eccentric located nucleus



15) plasma cells:

clock face appearance ✓

+ve Golgi image

originate from T-lymphocyte

Acidophile

16) proteoglycans:

Sulfated GAGs + core of protien ✓

Non Sulfated GAGs + core of protien

Linear polysaccharide

Tow sugar units

17) One the following is not C.T proper:

Loose C.T

Dense regular C.T

Dense irregular C.T

Adipose ✓

18) it withstands stretch from all direction:

Dense regular C.T

Dense irregular C.T ✓

Loos C.T

areolar

19) Site of mucoid connective tissue:

Umbilical cord ✓

Tendon

Dermis of the skin

lymph nodes

20) the thickest portion of the sytoplasm surrounding the nucleus contains:

Golgi complex, mitochondria, nucleus ✓

SER, microtubules

SER ,RER

Golgi complex ,mitochondria, microtubules



21) one of the following is a true about multiocular adipose tissue :

incomplete connective tissue septa

larger than those of unilocular

it's color is a brown to large number of a blood cavalleries numerous mitochondria ✓

it is a present throughout the human body except eyelids, penis

22) framework of liver tissue:

mucoid

Dense CT

reticular connective tissue ✓

monocular macrophages

23) Fibroblast :

large fusiform branching cells with acidophilic

Pale staining with prominent nucleolus ✓

rich in SER

all of the above

24) one of the following is correct about perichondrium:

fibro cellular covers all types of cartilage

Rich in chondrocyte

gives nourishment to the chondrocyte ✓

it is responsible for firmness an flexibility

25) True statement about perichondrium:

rich in chondroblast

fibro cellular

gives nourishment to the chondrocyte

all of the above is correct ✓



26) cartilage found in skeleton of fetus:

Hyaline ✓

elastic

white fibrocartilage

all of the above

27) cartilage present in trachea:

elastic

hyaline ✓

white fibrocartilage

non of the above

54) Cartilage of external ear?

Hyaline cartilage

Elastic cartilage ✓

fibrocartilage

all of the above

55) the elasticity of the cartilage is obtained from:

collagenwhite fibrocartilage

elastic fibers ✓

hyaline cartilage

28) pale basophilic with glassy appearance:

hyaline ✓

elastic

fibrocartilage

all of the above

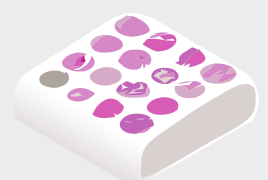
29) wrong statement about elastic fibers:

always covered with perichondrium

1-3/capsule

have collagen I ✓

present in ear pinna



30) Symphysis pubis found in:

hyaline

elastic

fibrocartilage cartilage ✓

non of the above

III

31) interstitial growth:

mitosis of chondrocyte inside the cartilage ✓

mitosis of chondrocyte from perichondrium

it's appositinal growth only

non of the above

32) Characters of cartilage :

avascular matrix ✓

loose CT

rich lymph & nerve

non of the above

33) woven bone:

cancellous

spongy

dense

compact

immature ✓

34) bone resorption:

osteoblasts

osteoclasts ✓

osteoprogenitor

osteocytes



35) Bone develops direct called?

Interosseous

Intramembranous ☒

appositinal growth

endochondral

36) functional unit of compact bone: Functional unit of compact bone?

Haversian canal

osteoid

lamellar

osteion ☒

37) Chondrocyte reside in space called?

lacuna ☒

osteoid

bone marrow

lamella

38) Which of the following not type of bone cell?

chondrocytes ☒

osteoblast

osteocytes

osteoclasts

39) Location of bone growth :

epiphyseal plate ☒

shaft

diaphysis

end of bone

40) Fibers prevent separation of perichondrium:

cellular layer

sharpey's fibers ☒

vascular layer

non of the above



41) Cell that produces ground substance and fibres of cartilage called?

Chondroblast ✓

Chondrocyte

osteocytes

A+B

42) function of canaliculi:

nourishment of osteocyte ✓

nerve supply

contraction

non of the above

43) shape of the RBCS:

horse-shoe shape

biconcave disc ✓

flattened

kidney shape

44) What is the membrane protein that responsible about ABO blood system?

spectrin

ankyrin

glycophorin ✓

albumin

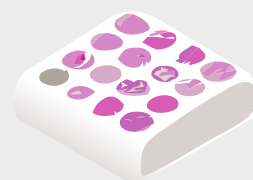
45) RBCS removed from the circulation by:

megakaryocytes

spleen ✓

reticulocytes

Monocytes



46) reticulocytes stained by :

toluidine blue

wright's stain

brilliant cresyl blue ✓

silver

47) origin of platelets:

Macrophages

Meagakaryocytes ✓

spleen

bone marrow

48) the true statement about hyalomere :

Has 2 system derived from basement membaen and ER ✓

has 2 systems derived from plasma membrane only

has one system of plasma membrane

Dark blue staiand

49) The leukocytes send extensions through the openings between the endothelial cells:

Diapedesis ✓

chemotaxis

margination

exocytosis

50) nucleus of eosinophils:

kidney shape

horse-shoe shape ✓

flattened shape

fusiform



51) none specific granules of eosinophils contain:

histaminase

aryl sulfatase

hydrolytic enzymes ✓

glycogen

52) major basic protein kills:

parasite ✓

bacteria

virus

tumor cells

53) the true statements about small lymphocytes:

large lightly stained nucleus

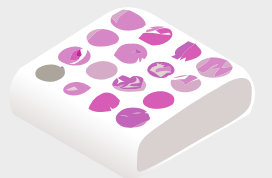
cytoplasm appears as a narrow rim around the nucleus ✓

less than large lymphocytes

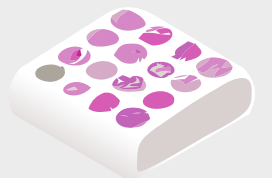
acidophilic



الطب والجراحة لجنة



الطب والجراحة لجنة



الطب والجراحة لجنة

