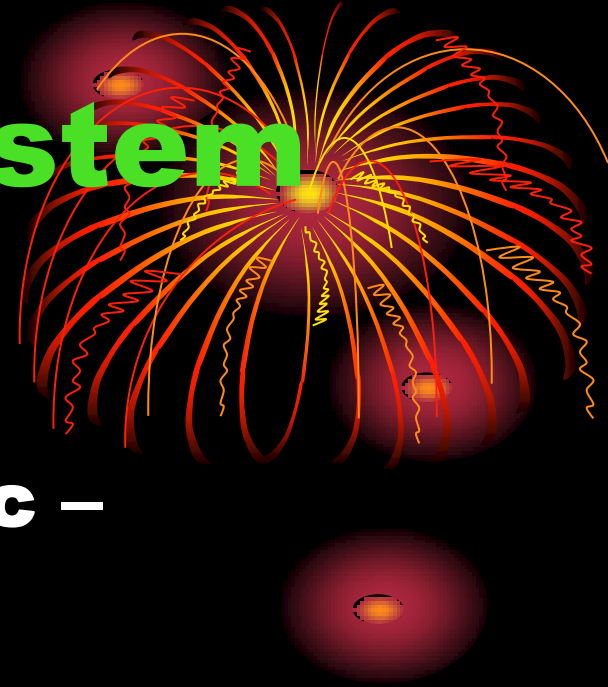




# **BLOOD VESSELS** **(lab)**

# Blood vascular system is formed of:



**1- Arteries** (large elastic –  
medium sized- arterioles)

**2-Veins** (large veins – medium  
sized- veins- venules)

**3- Connection between  
arteries and veins**

# General structure of blood vessels

## A) Tunica Intima:

1- Endothelium

2- Subendothelium:

3- Internal elastic lamina

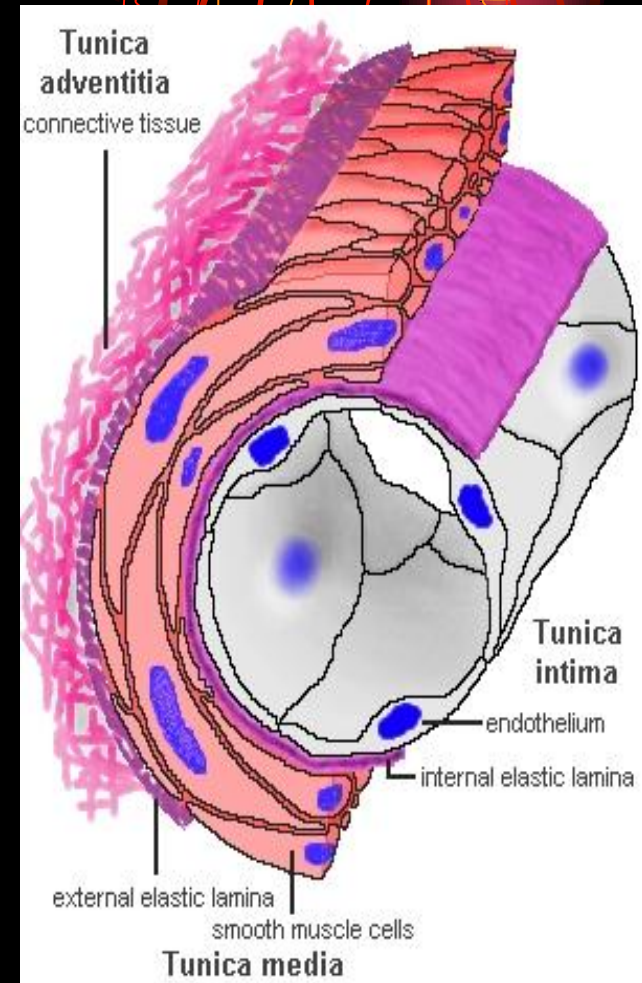
## B) Tunica media:

Circularly arranged smooth muscles and elastic fibers

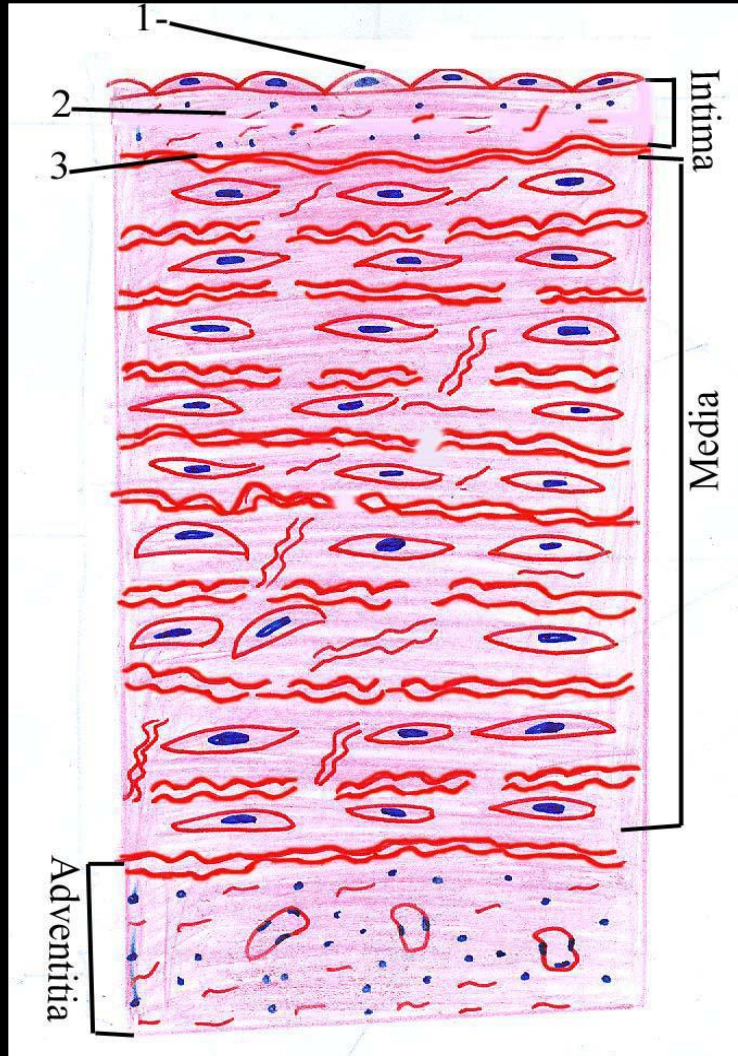
- External elastic lamina.

## C) Tunica adventitia:

Loose C.T.

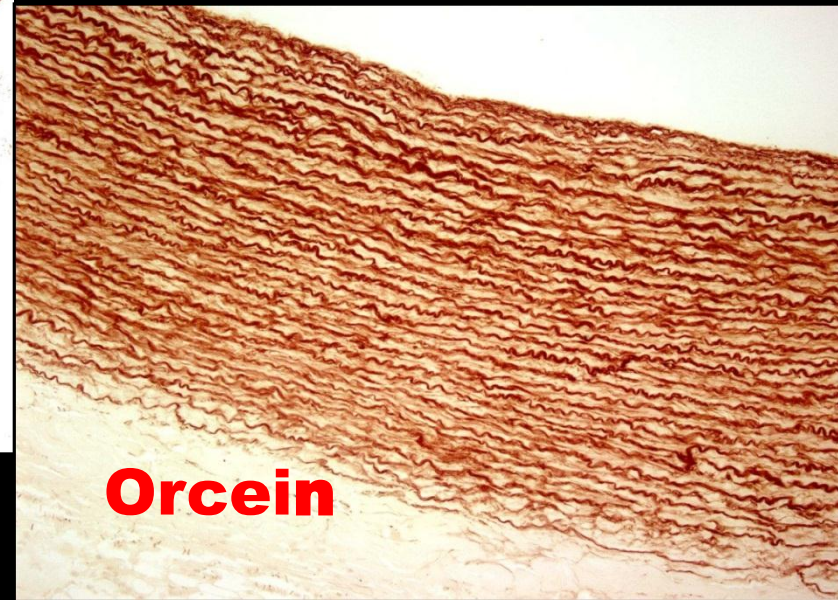
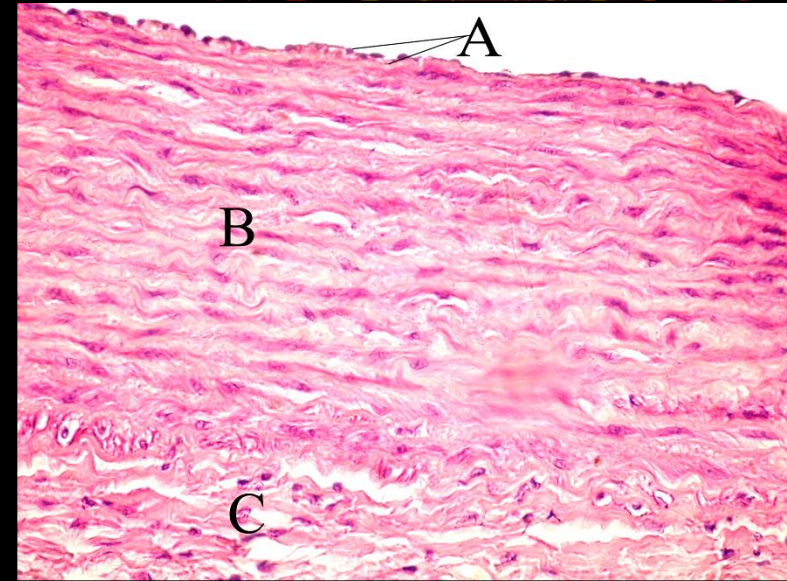


# LARGE (ELASTIC) ARTERIES (AORTA)



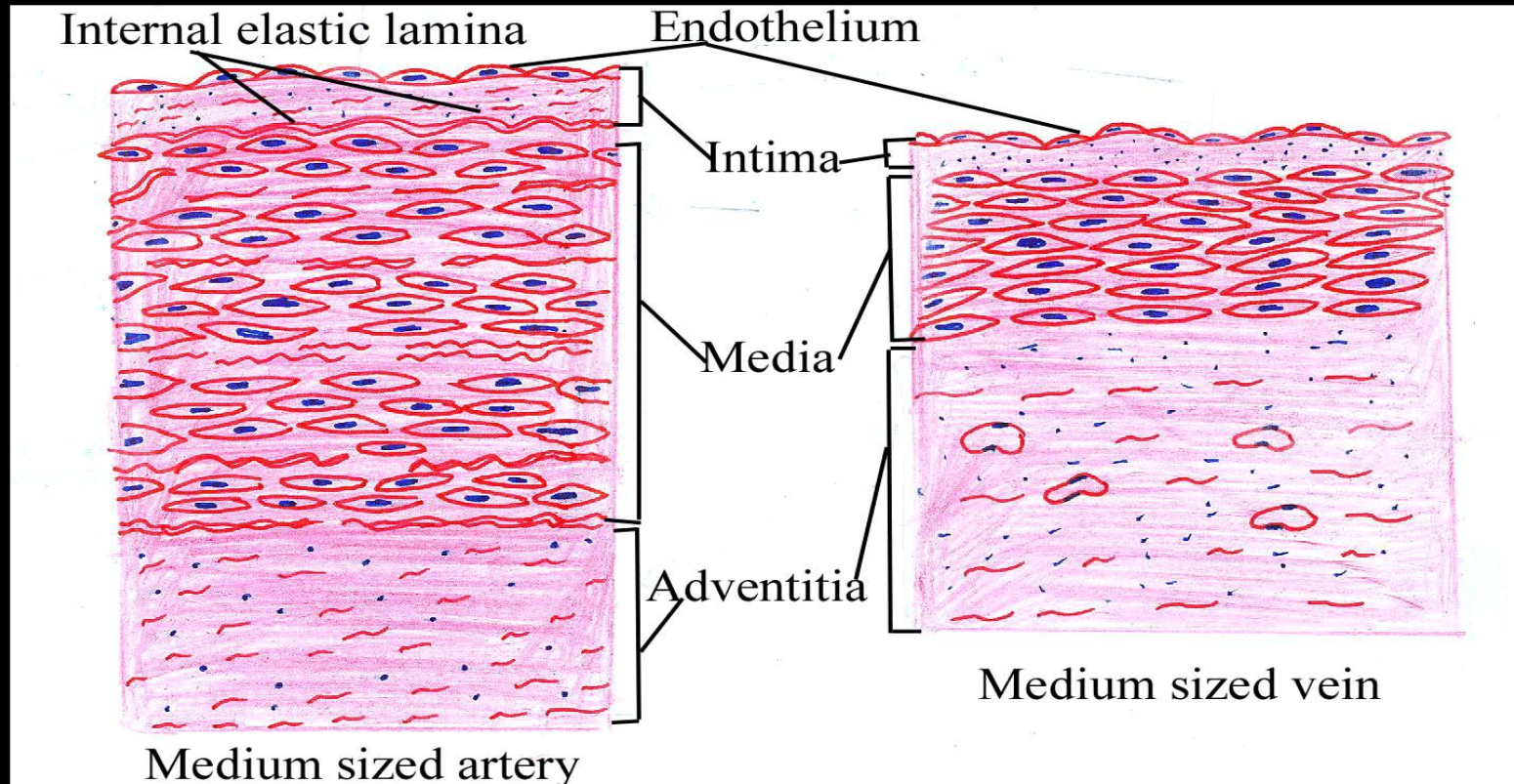
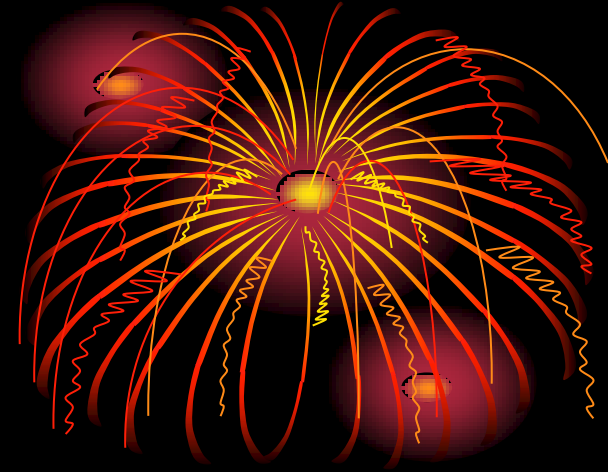


# AORTA



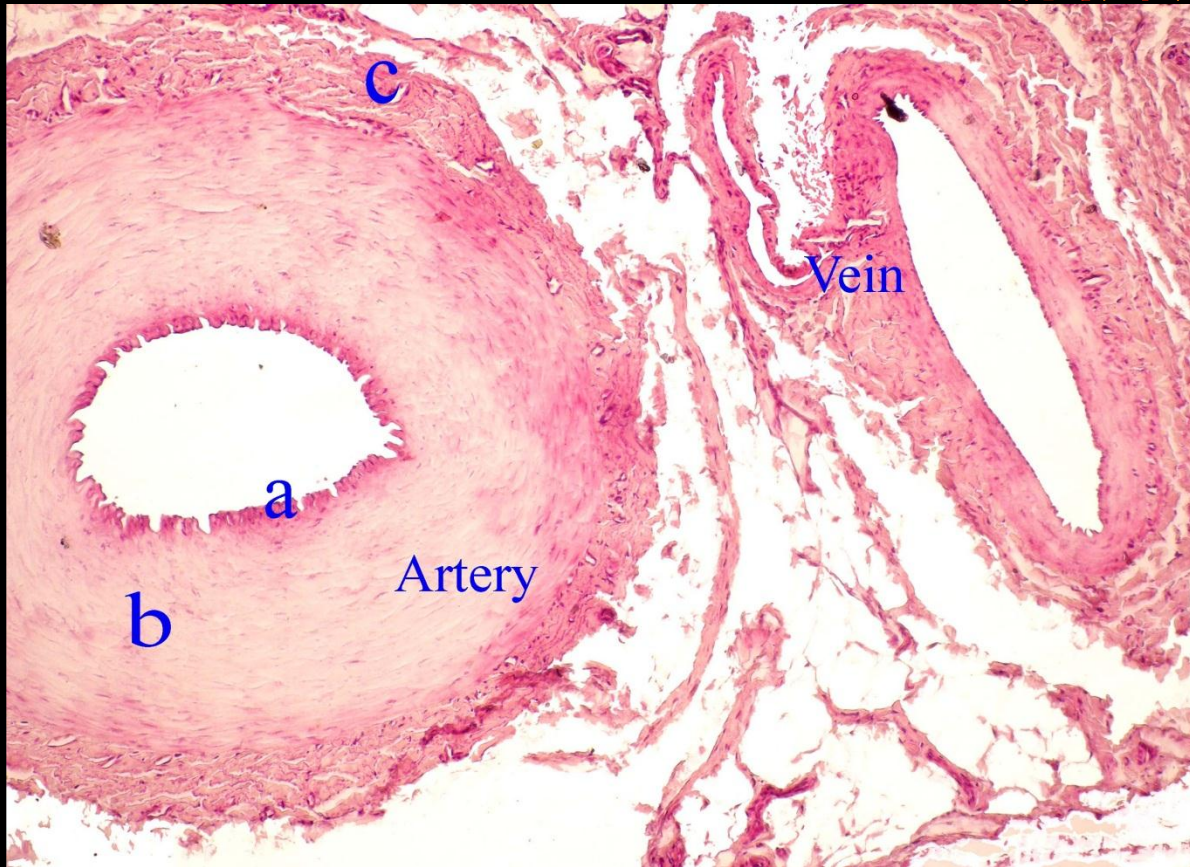
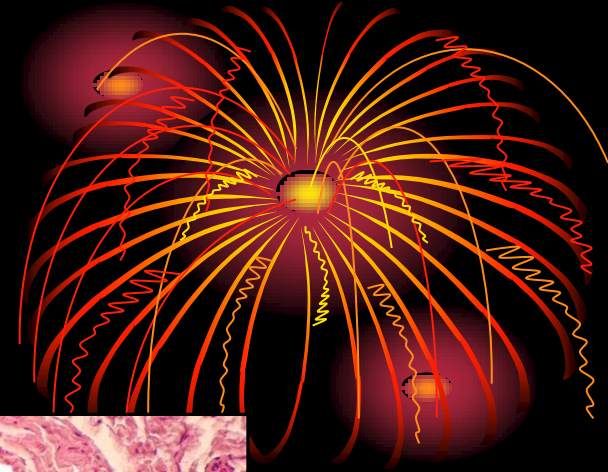
**Orcein**

# MEDIUM – SIZED ARTERY & Vein





# MEDIUM – SIZED ARTERY & Vein



THANK

YOU