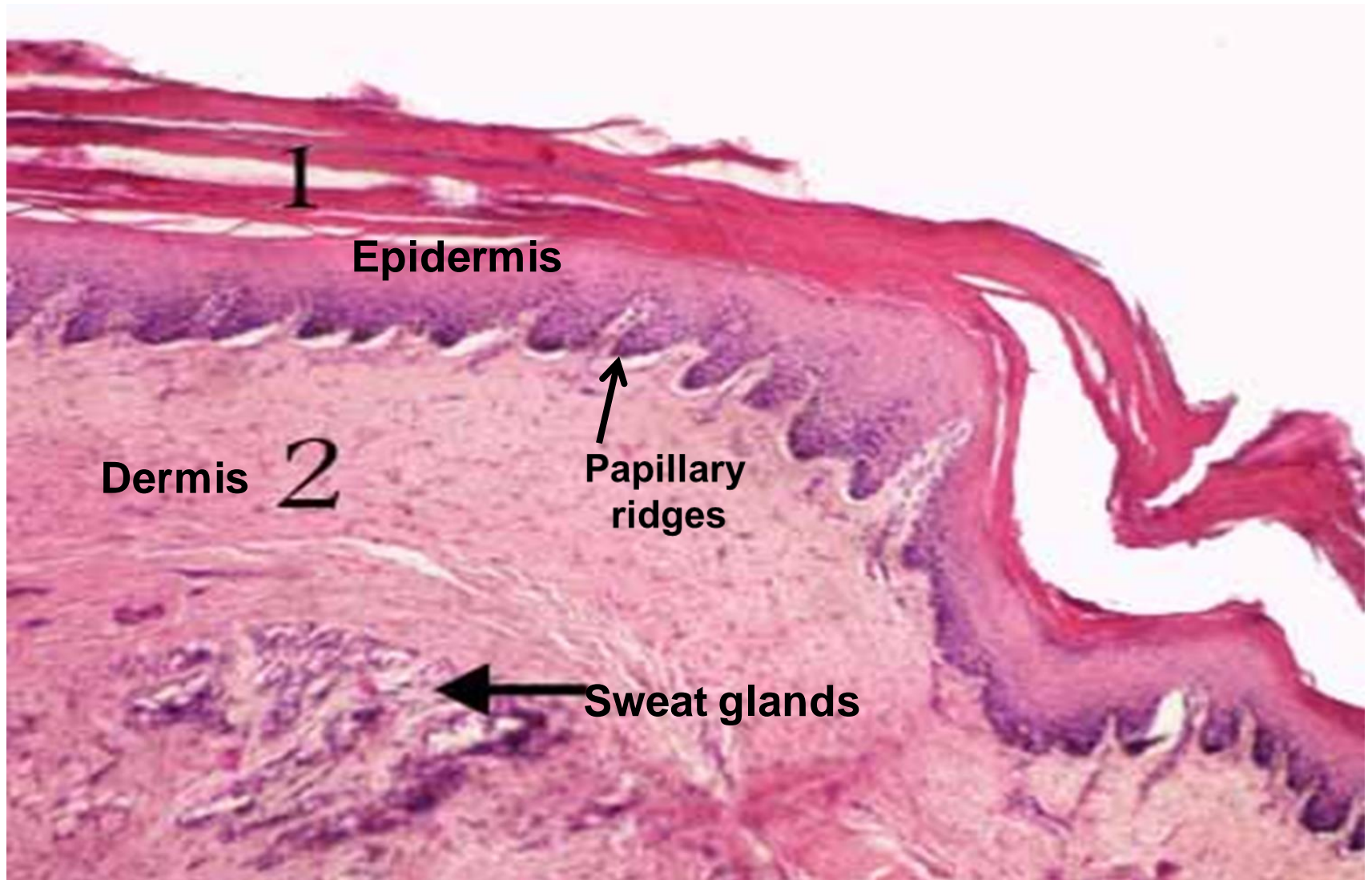


# **HISTOLOGY LAB 1**

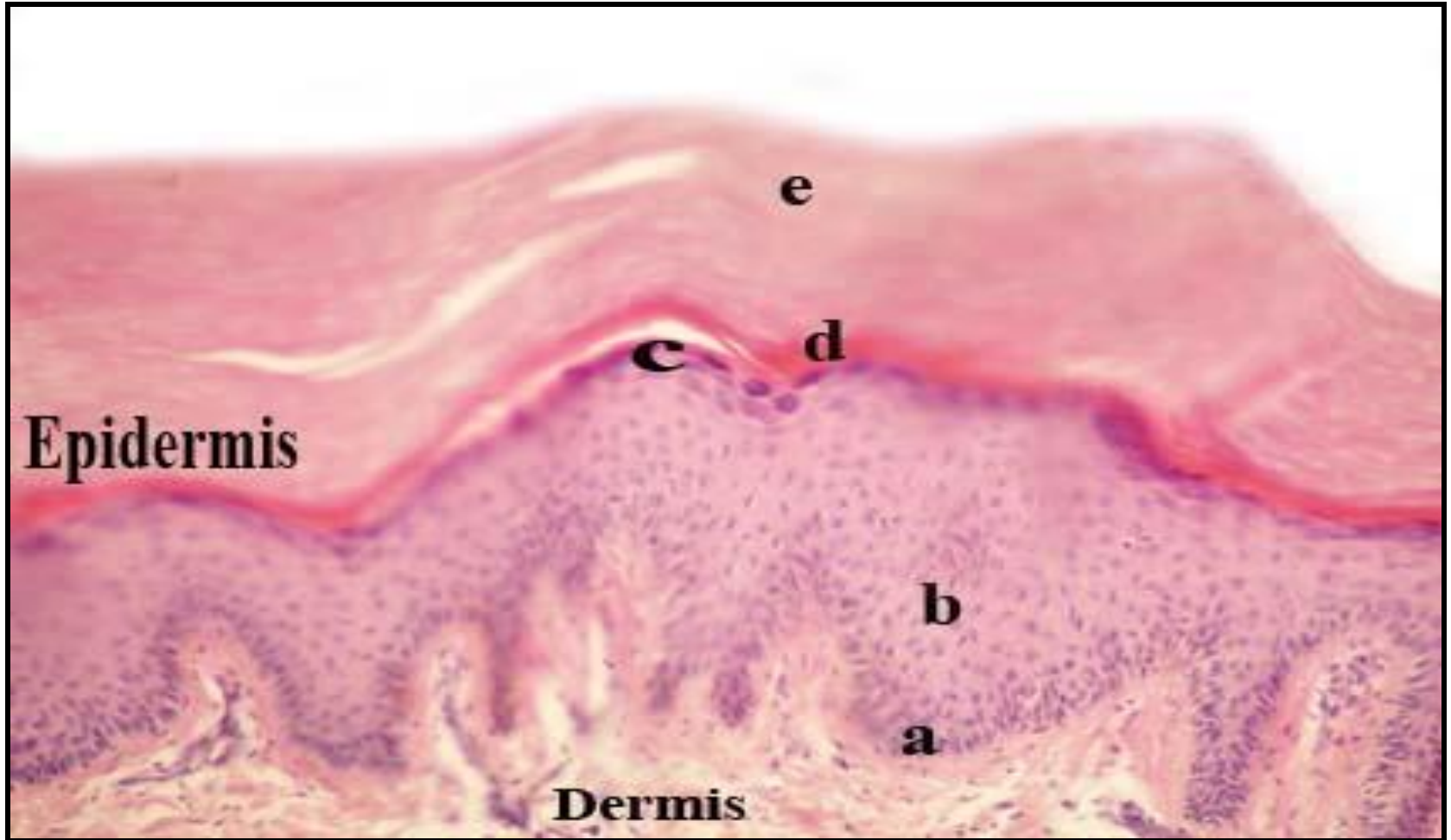
## **SKIN+ MUSCLE**

**Ass. Prof Dr. Heba Hassan Abd El-Gawad**

# THICK SKIN



# THICK SKIN



a- Stratum basale

b- Stratum spinosum

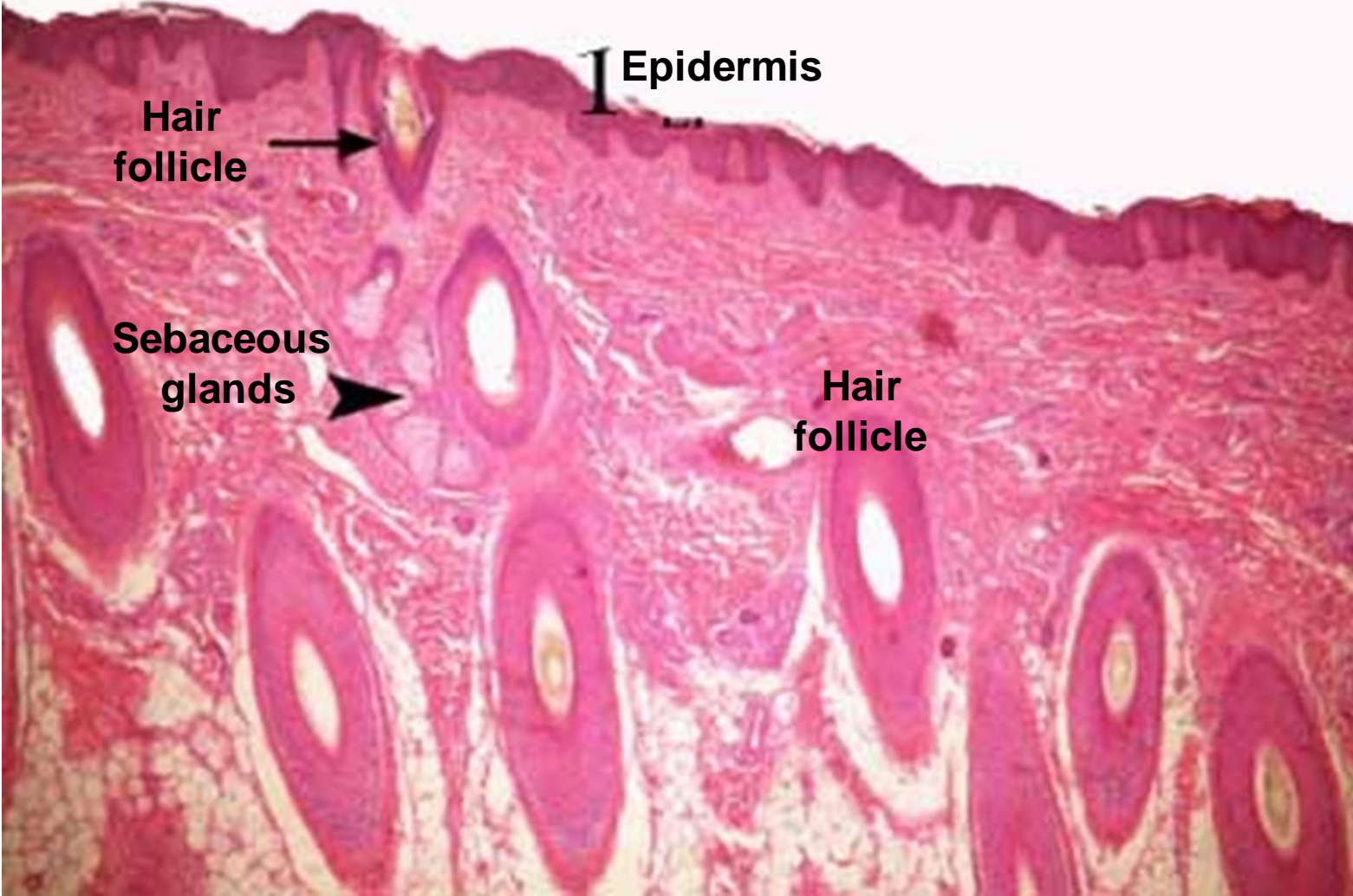
c- Stratum granulosum

d- Stratum lucidum

e- Stratum corneum



# THIN SKIN



# THIN SKIN





# THIN SKIN



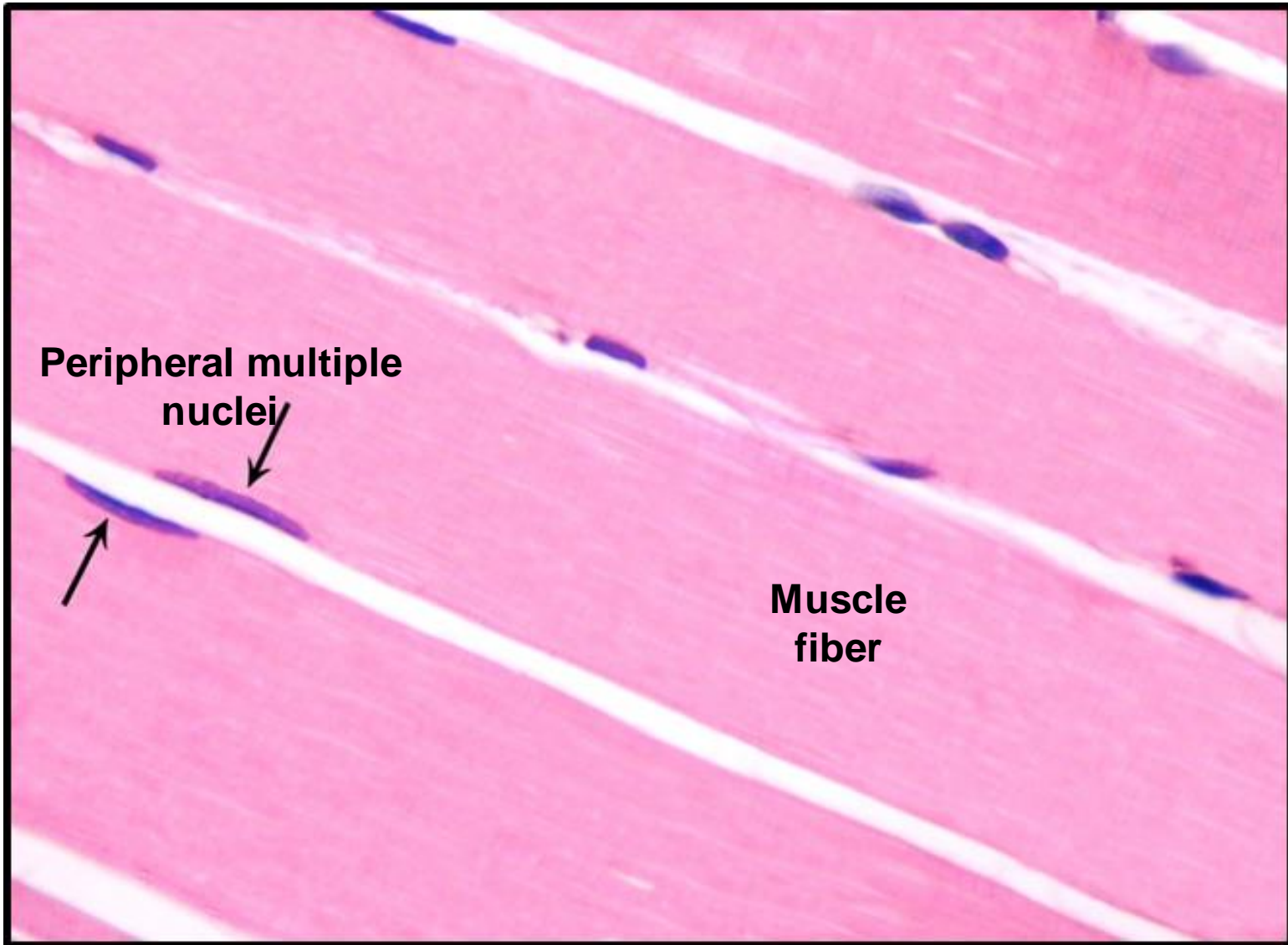
1. Epidermis (k.st.sq.epith.)

2. dermis

3. hair follicle

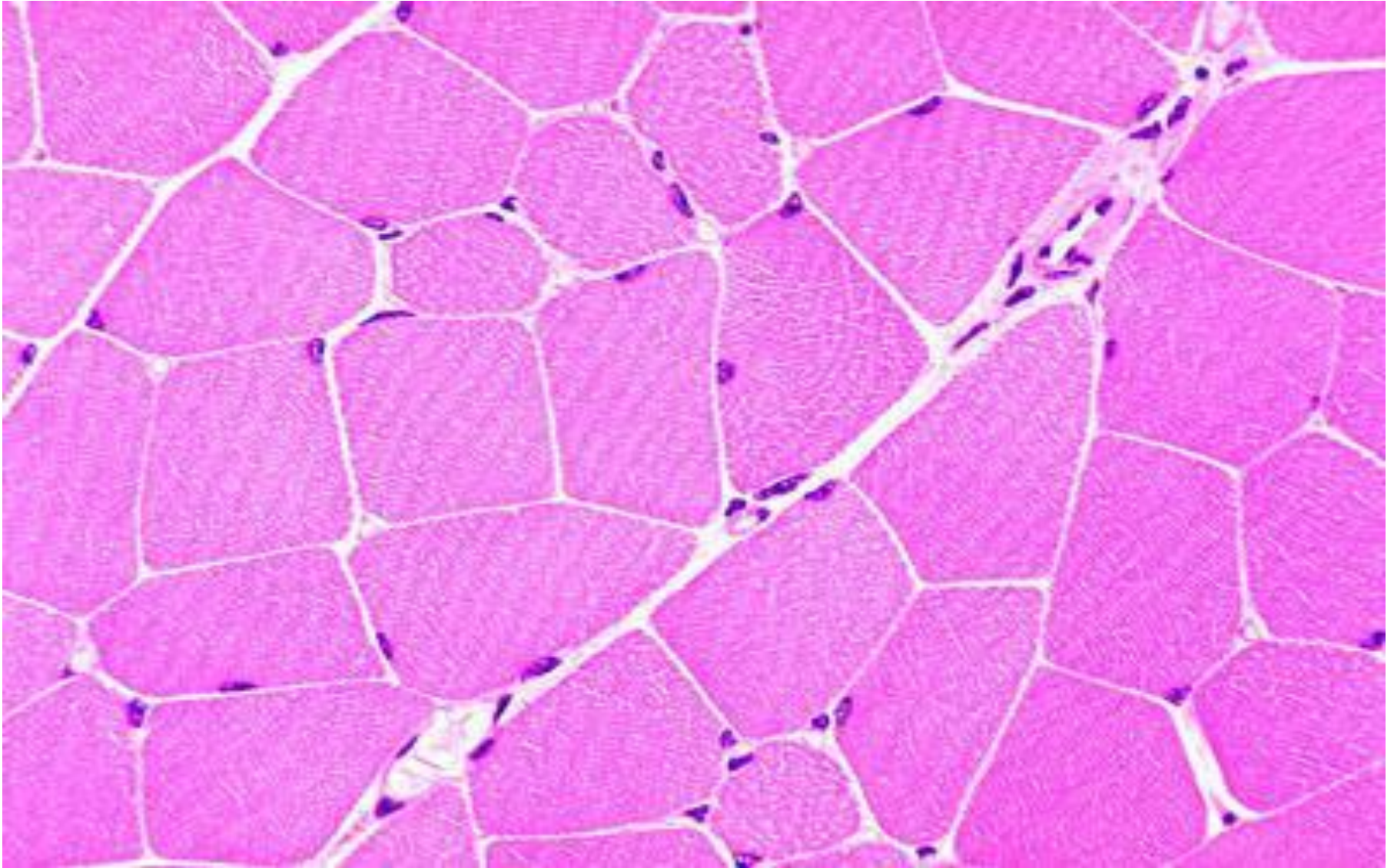
4. erector pilli muscle

# L.S skeletal muscle





# TS skeletal muscle





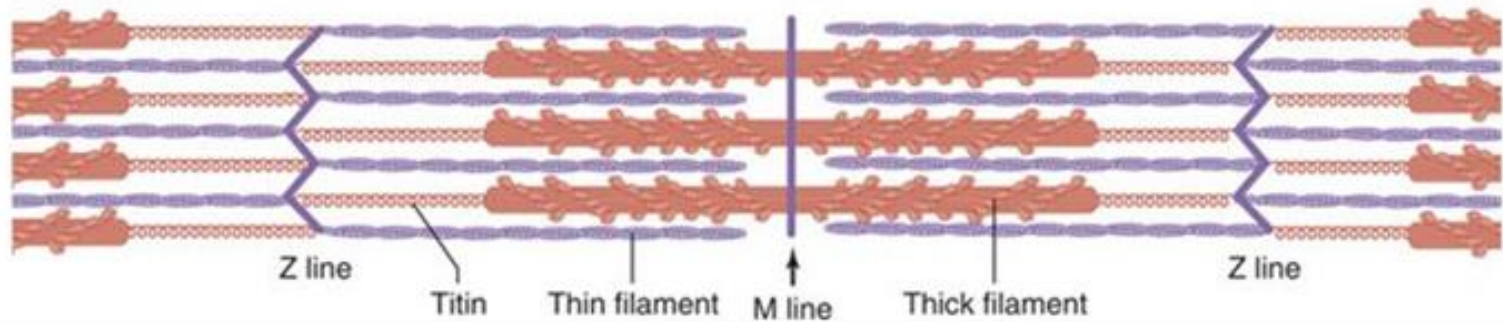
# EM of L.S skeletal muscle

(a)

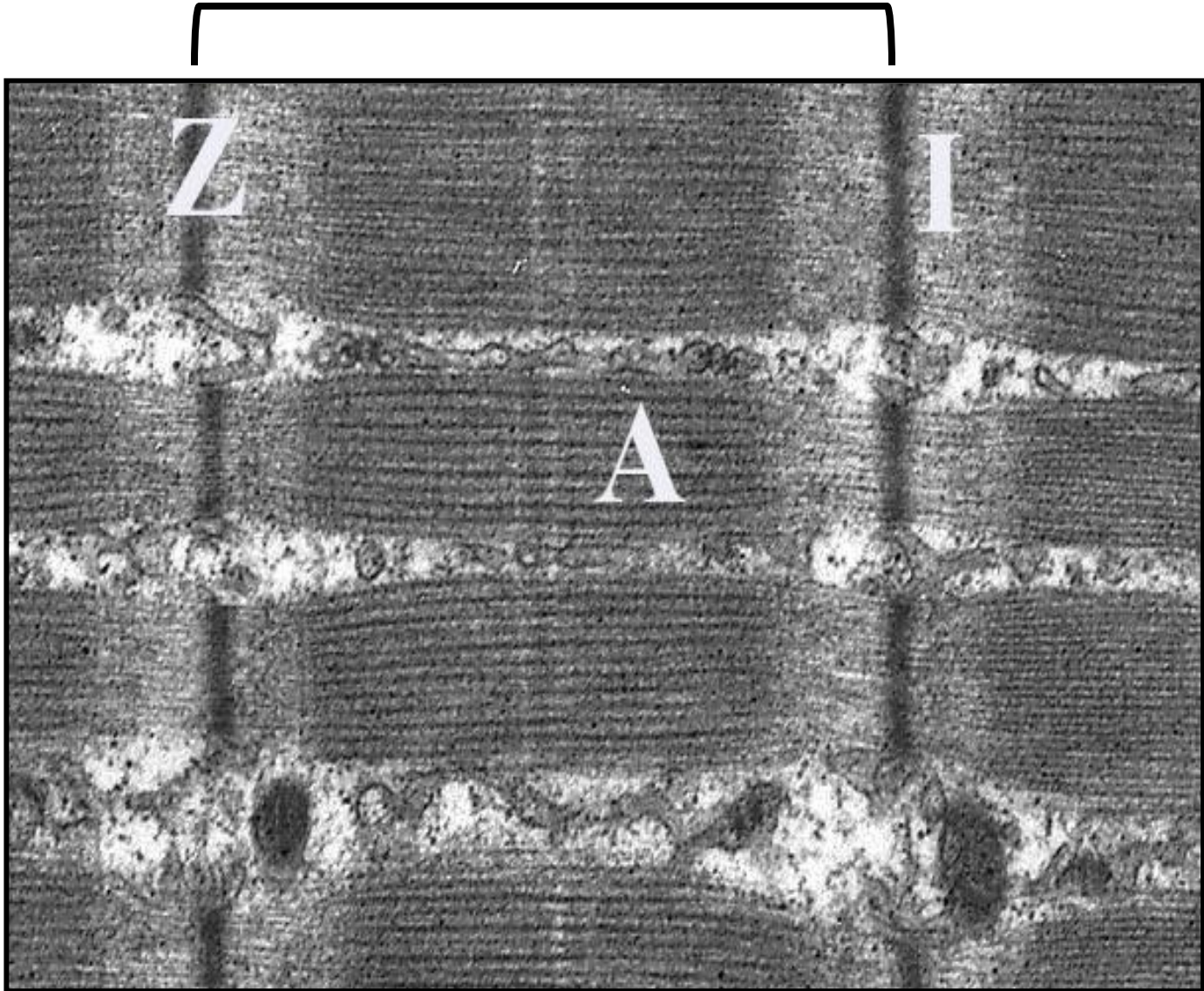


I band A band H zone

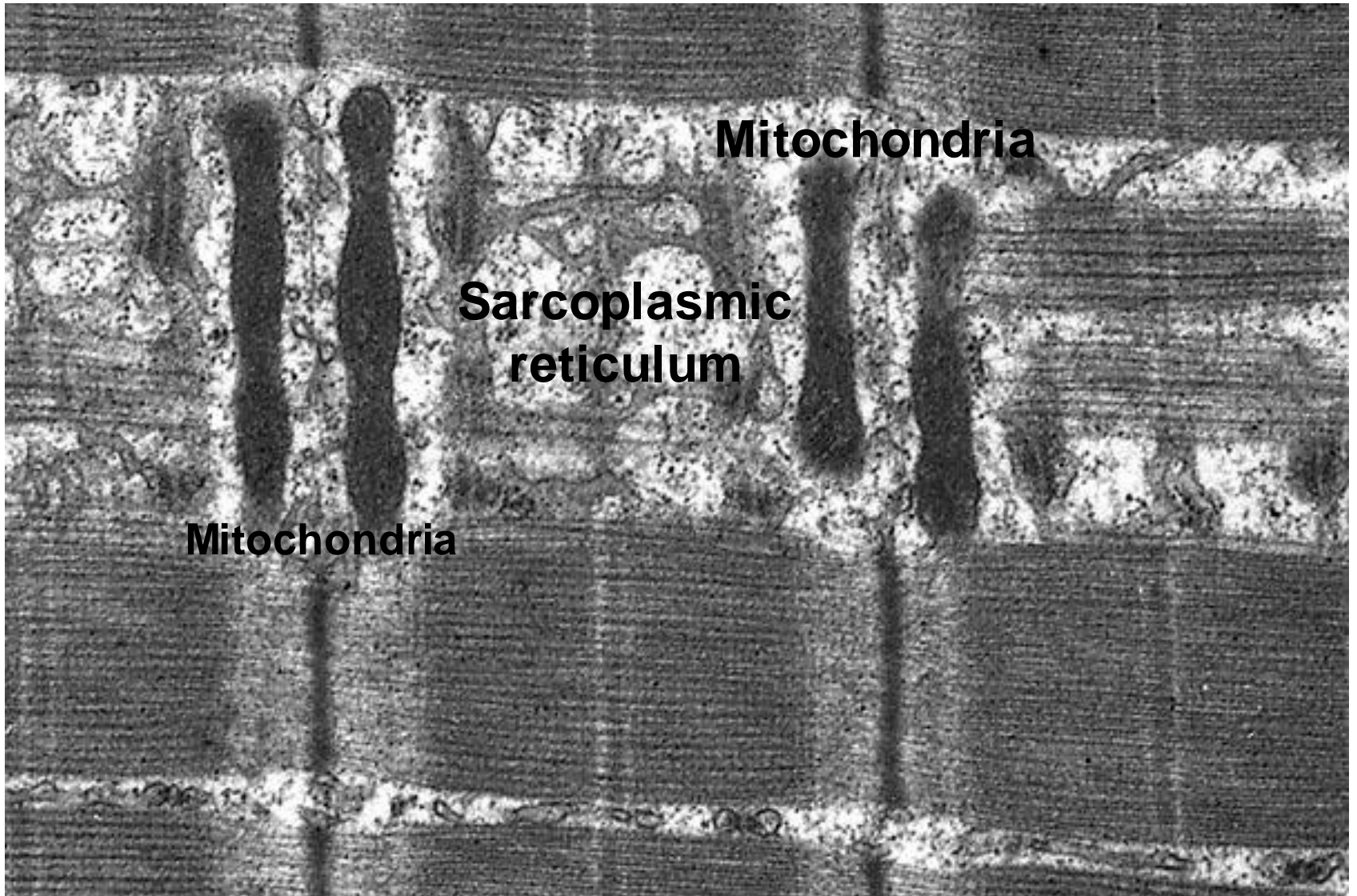
(b)



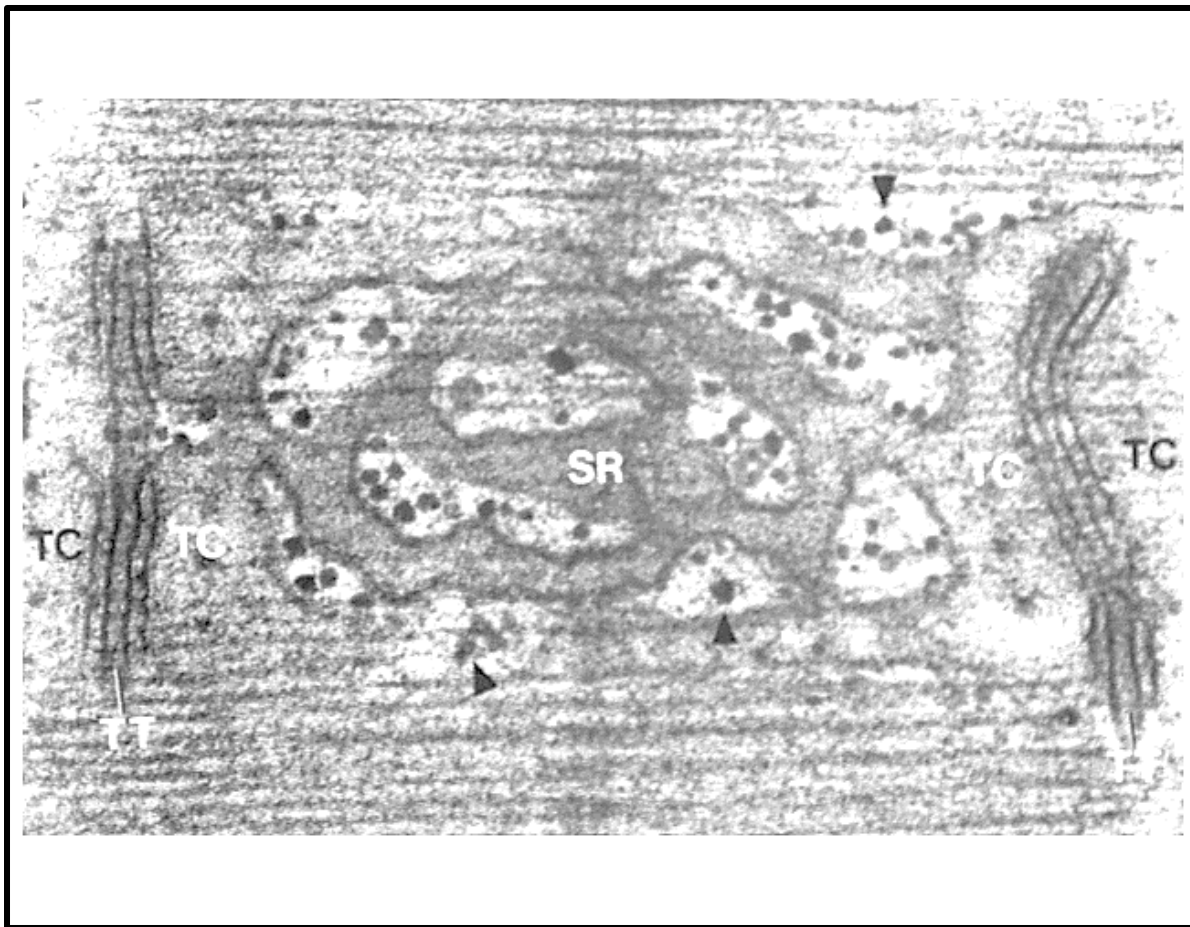
# LS skeletal ms showing sarcomere



# EM of L.S skeletal muscle







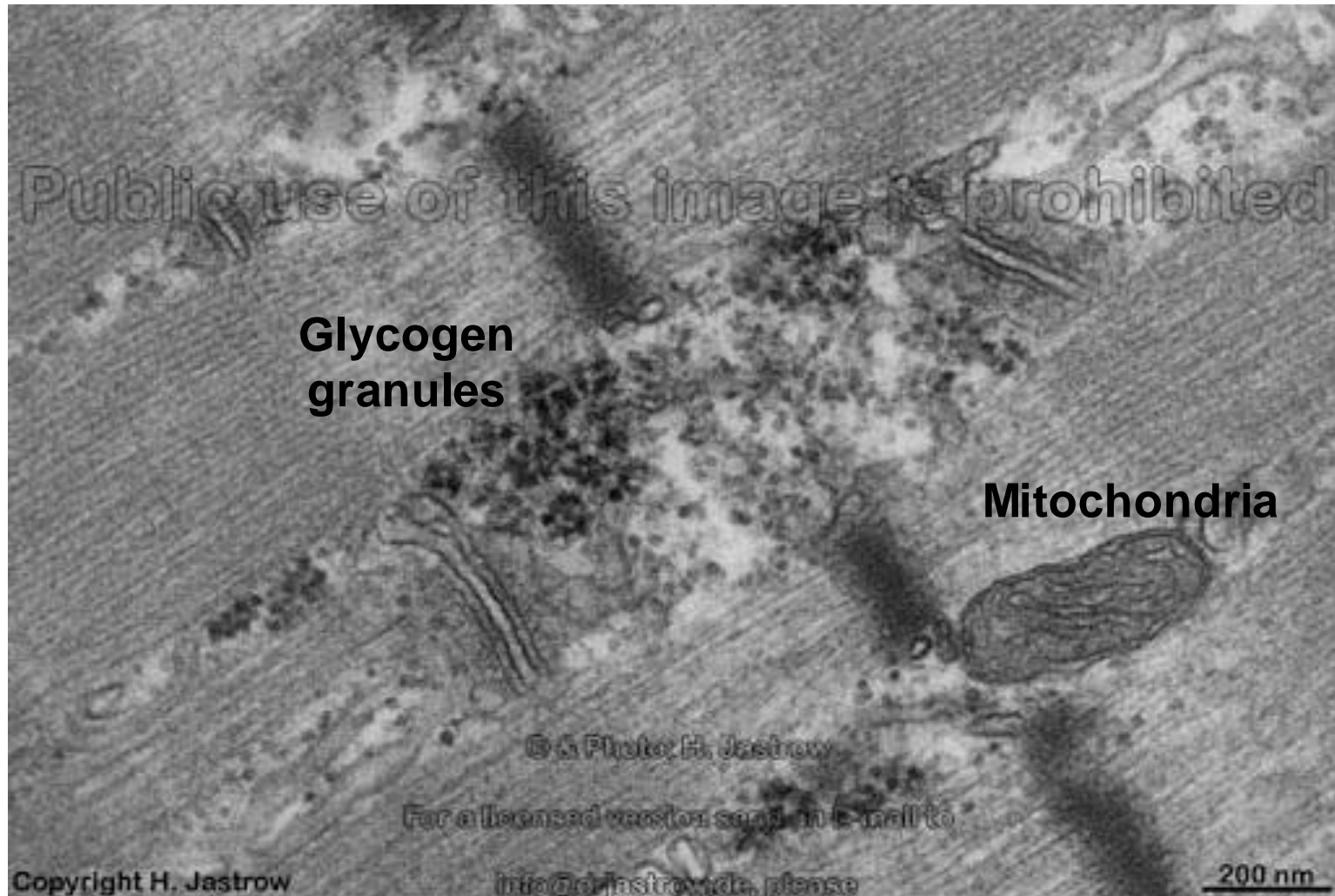
**SR= sarcoplasmic reticulum**

**TT= T-tubule**

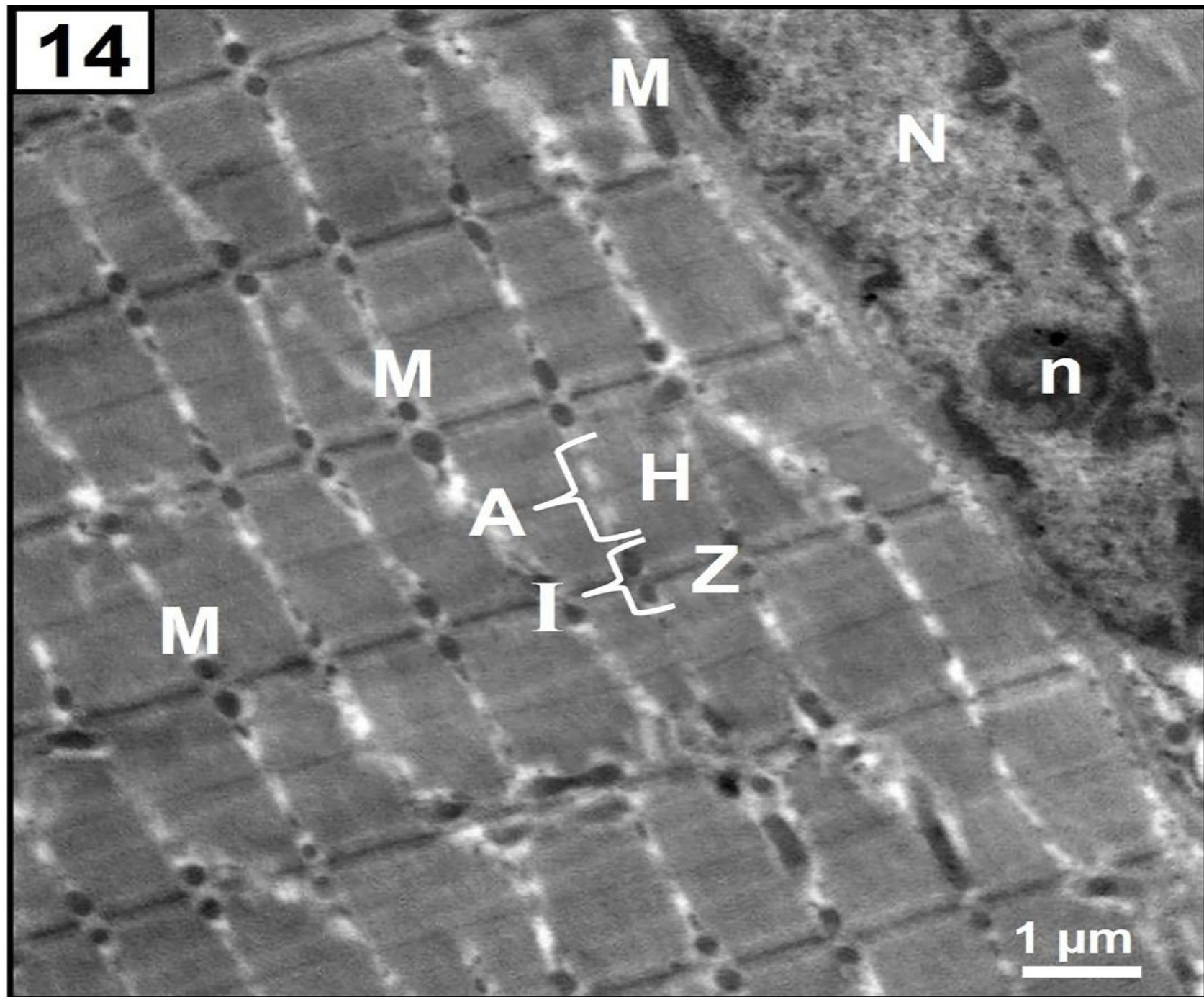
**TC= terminal cisternae**

**arrow head =calcium ions**

# EM of L.S skeletal muscle

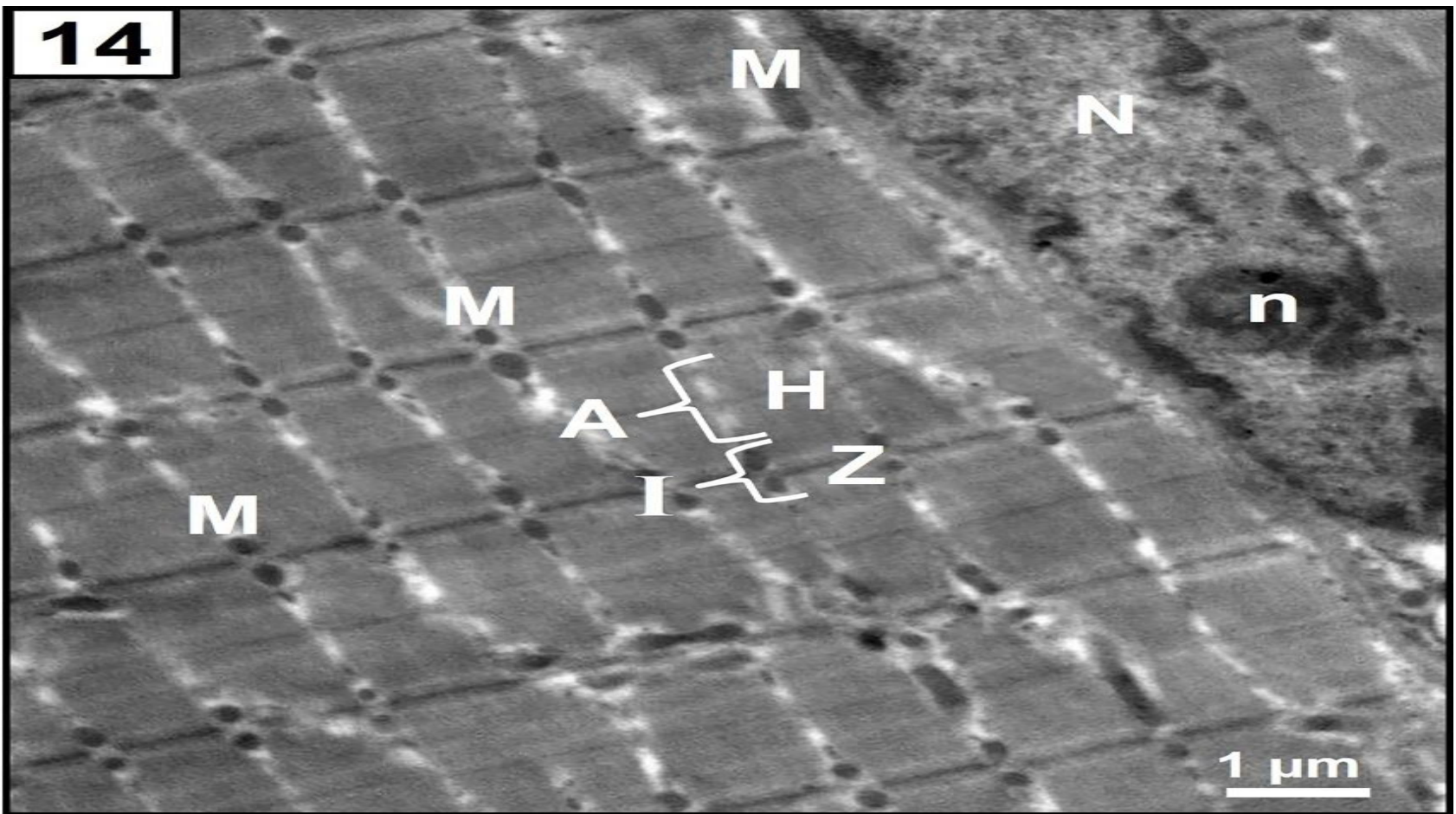


14





14



- N=nucleus
- M= mitochondria
- n=nucleolus