

وسهلا

أهلا



الأستاذ الدكتور يوسف حسين

أستاذ التشريح وعلم الأجنة - كلية الطب - جامعة الزقازيق - مصر

رئيس قسم التشريح و الأنسجة و الأجنة - كلية الطب - جامعة مؤتة - الأردن

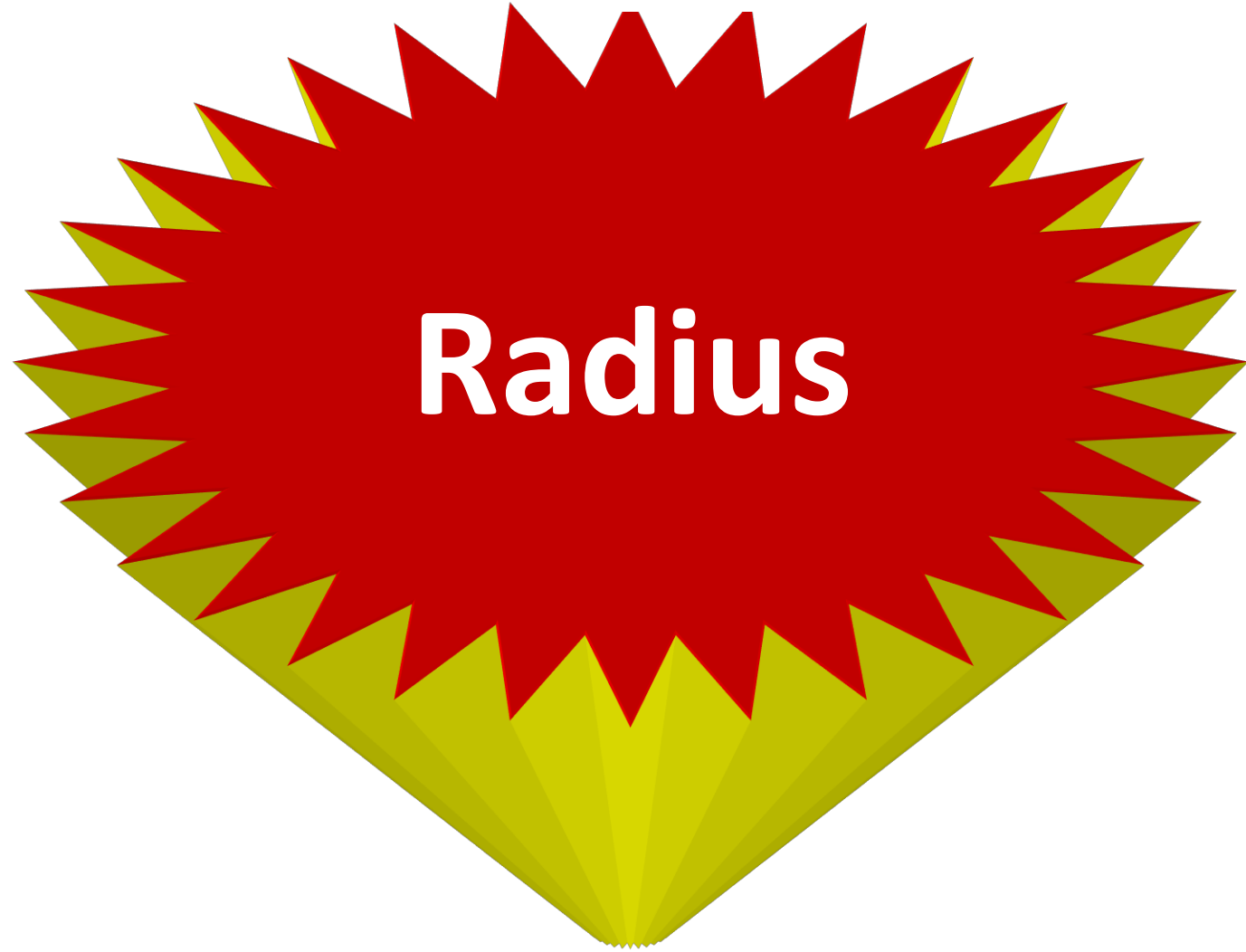
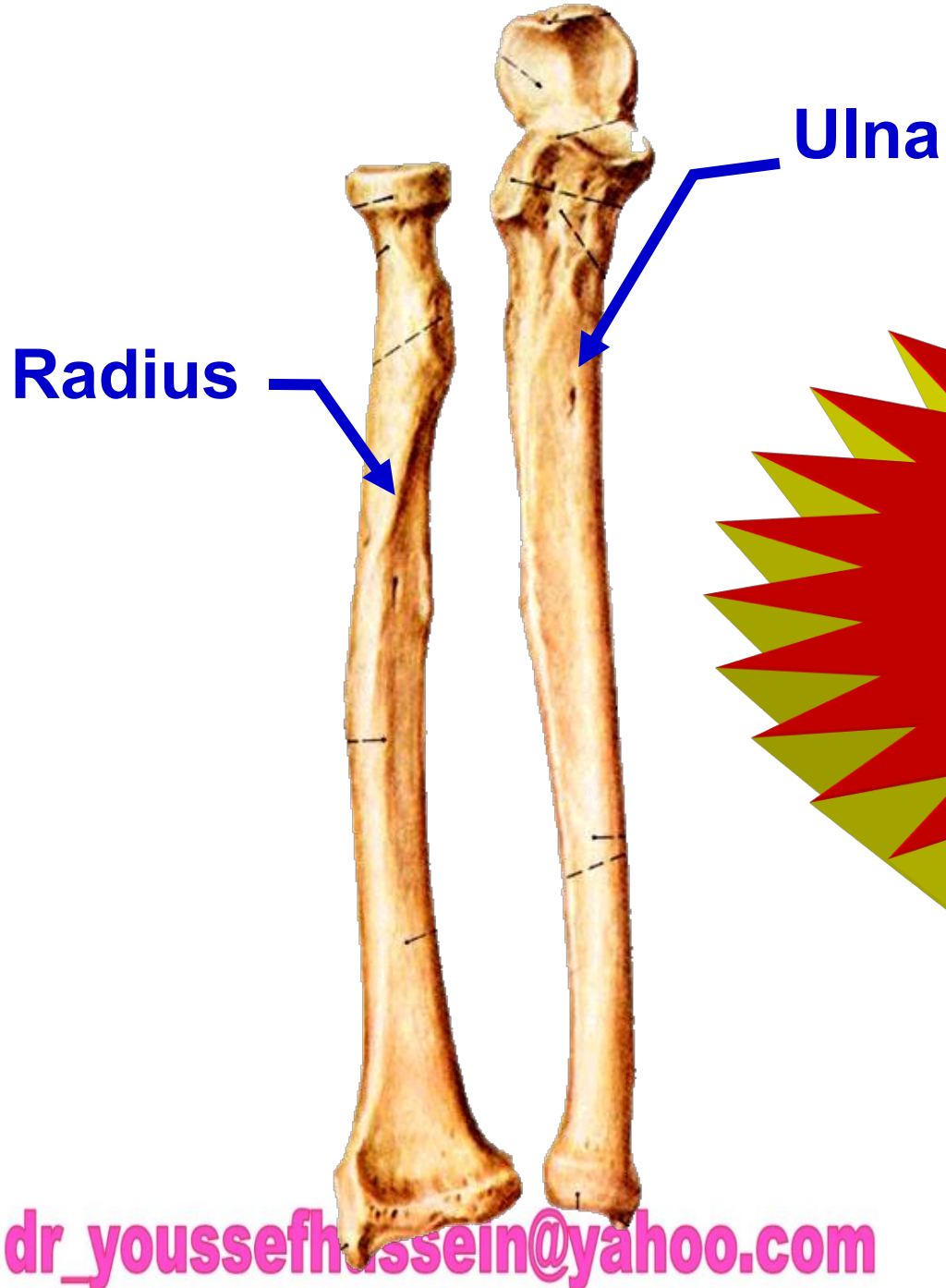
مساعد العميد لشؤون الطلاب والامتحانات - كلية الطب - جامعة مؤتة - الأردن

دكتورة من جامعة كولونيا المانيا

Prof. Dr. Youssef Hussein Anatomy اليوتيوب

جروب الفيس د. يوسف حسين (استاذ التشريح)

dr_youssefhussein@yahoo.com



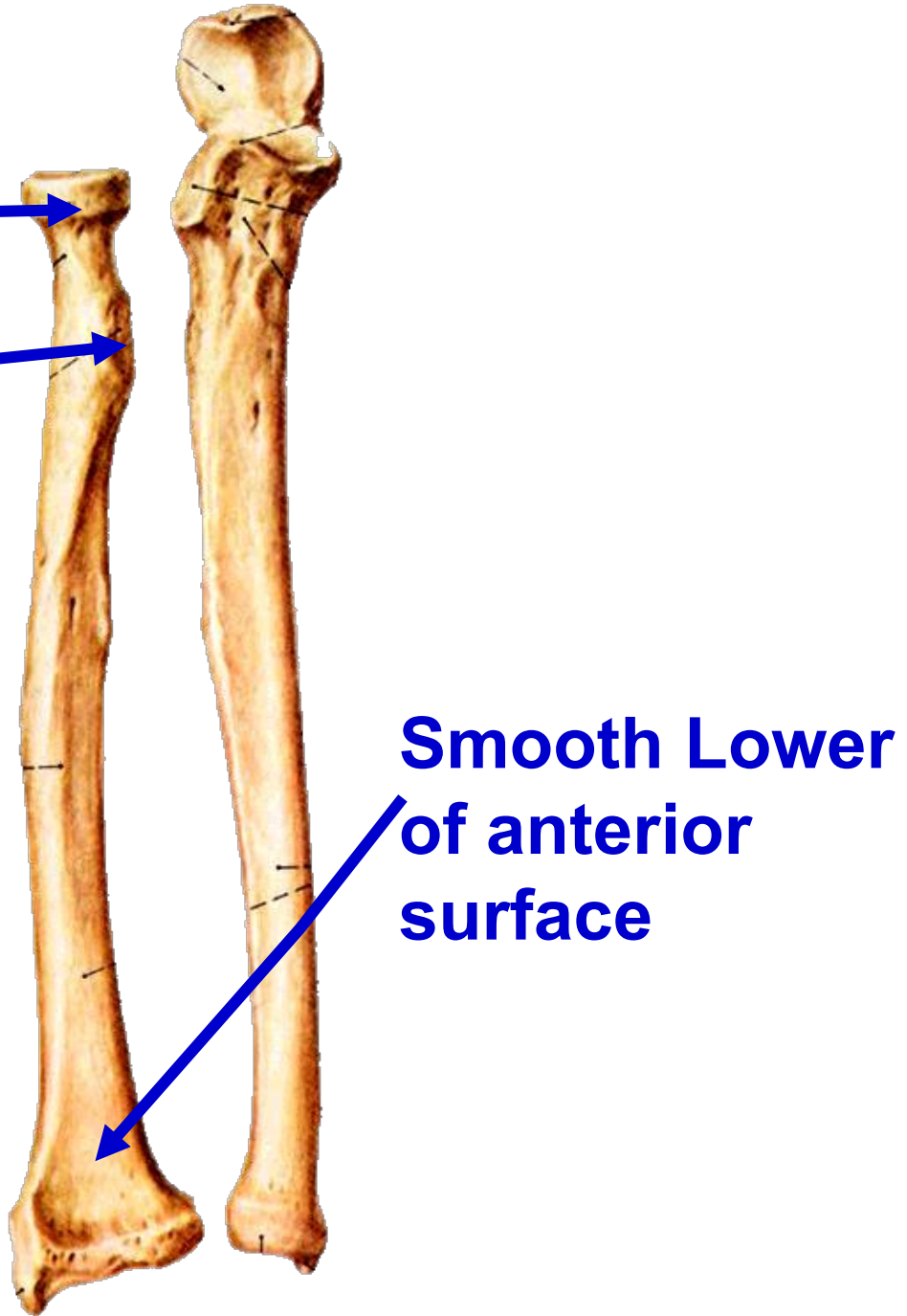
dr_youssefhussein@yahoo.com

Head of radius →

Radial tuberosity →

**** Identification of the side of the radius**

- The head is directed upwards.
- The radial tuberosity is directed medially.
- The anterior surface of the lower end is smooth and concave.



Head of radius

Neck of radius

Oblique line

Radial tuberosity

Posterior

Anterior border

Interosseous border

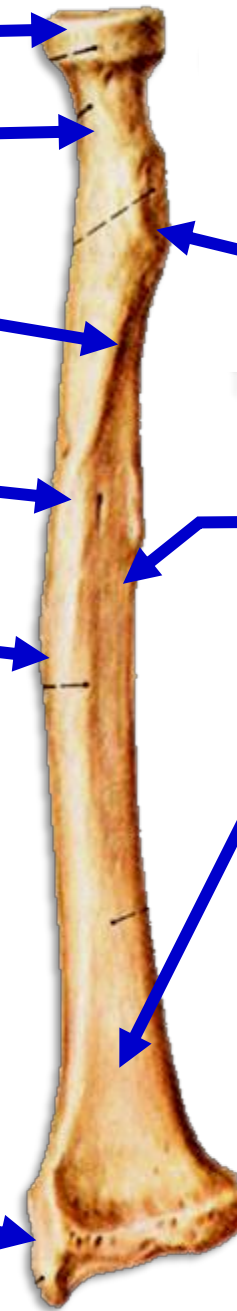
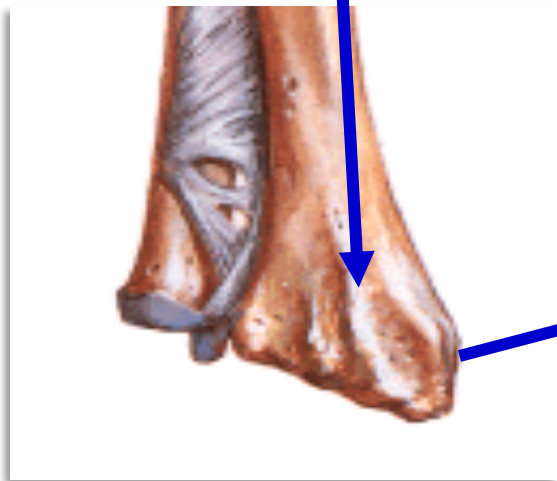
Dorsal tubercle

Rough impression in the middle of lateral surface

Smooth Anterior surface

Styloid process

dr_youssefhussein@yahoo.com



Joints related to Radius

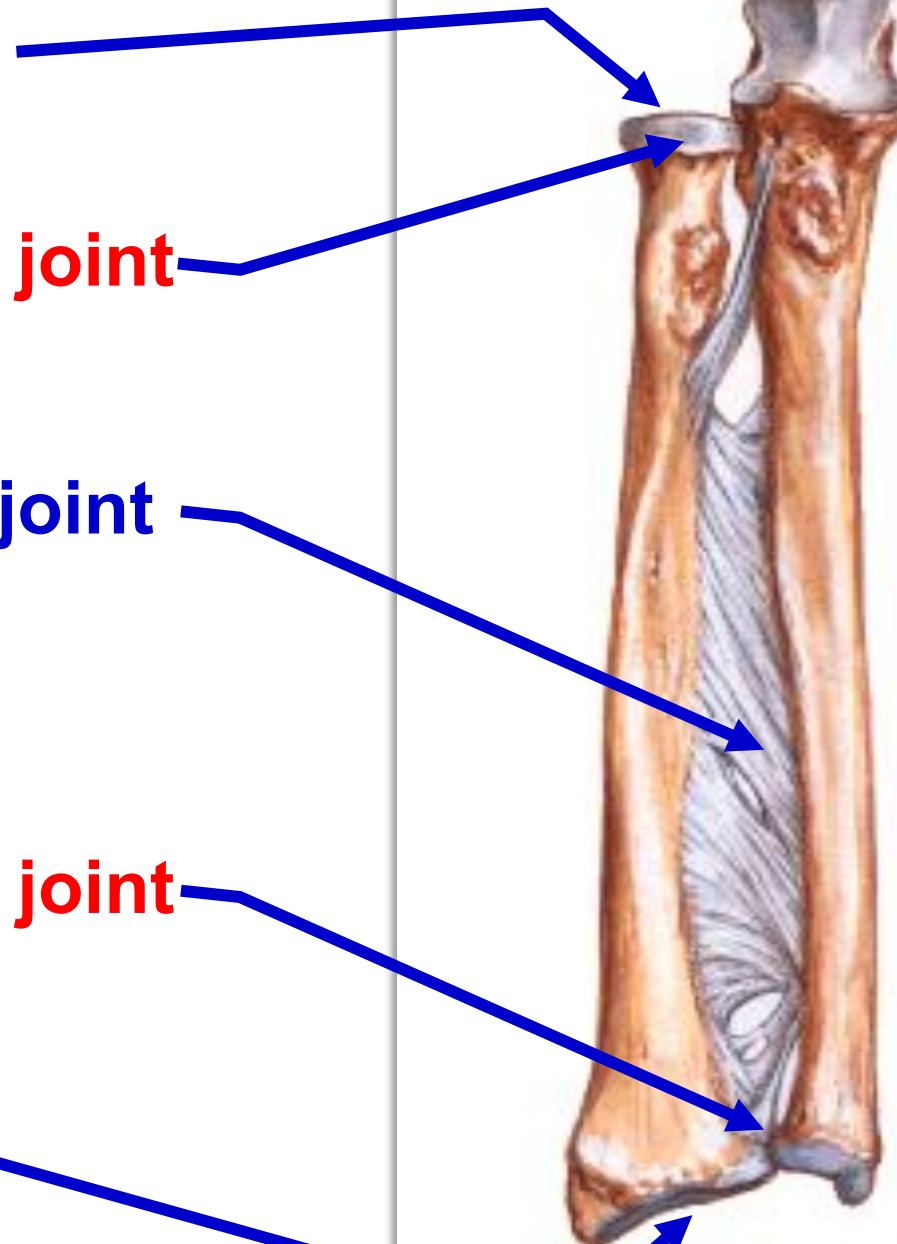
Elbow joint

Superior radioulnar joint

Middle radioulnar joint

Inferior radioulnar joint

Wrist joint



dr_youssefhussein@yahoo.com

Upper end

A - Head: is disc-shaped, having an upper articular surface and an articular circumference.

B- Neck: is the constriction below the head.

C –Radial tuberosity: is a **medial projection** below the neck.

Shaft

a- Interosseous border: which is a sharp border directed medially.

b- Anterior border: Its upper part deviates medially towards the radial tuberosity to form the **oblique line of the radius**.

c- Posterior border: which is clearly seen only in the middle third of the shaft.

1-Anterior surface: is narrow superiorly and wide inferiorly.

2- Posterior surface: is also wide inferiorly.

3- Lateral surface: is very wide superiorly. In the **middle** of the shaft, there is a **rough impression**.

dr_youssefhussein@yahoo.com

Lower end

- It is quadrilateral in cross section and has **5 surfaces**:

a- Anterior surface; is smooth and concave.

b- Posterior surface; is a rough surface which carries several grooves for the extensor tendons.

- It carries a prominence which is called the **dorsal tubercle**.

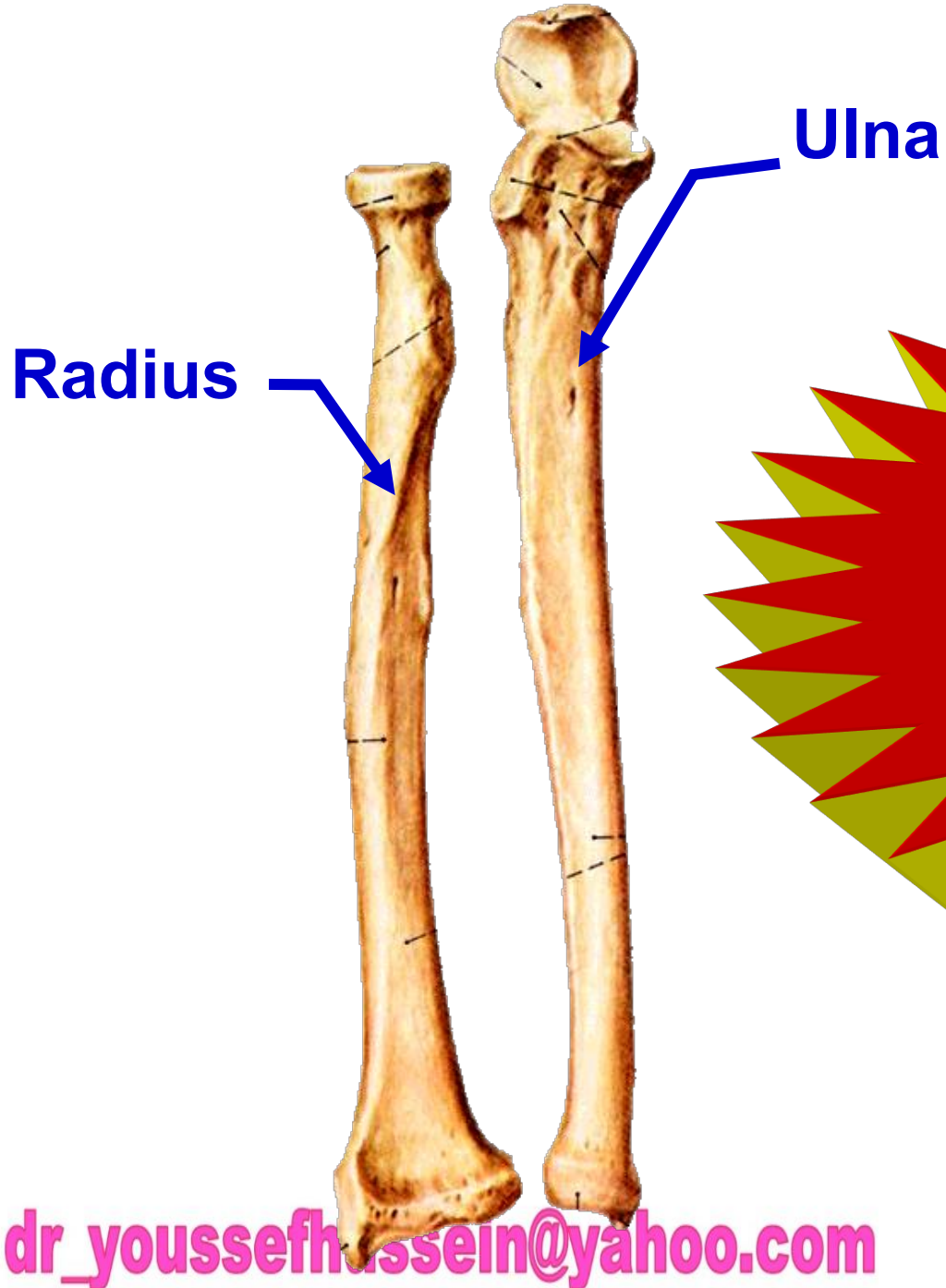
c- Lateral surface: Inferiorly, it forms a projection called **styloid process**.

d- Medial surface: called the **ulnar notch** of the radius.

- It articulates with the head of the ulna to form the inferior radioulnar joint.

e- Inferior surface, is an articular surface which articulates with the proximal row of carpal bones to form the wrist (radiocarpal) Joint.

dr_youssefhussein@yahoo.com



dr_youssefhussein@yahoo.com

Trochlear notch →

Radial notch →

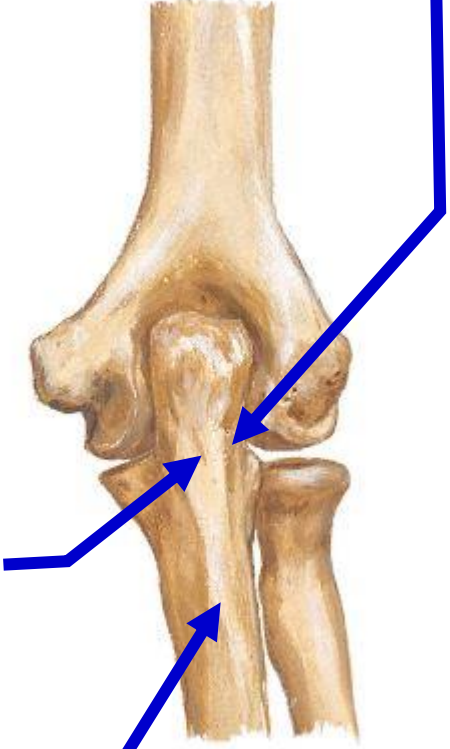


**** How to identify the side of ulna**

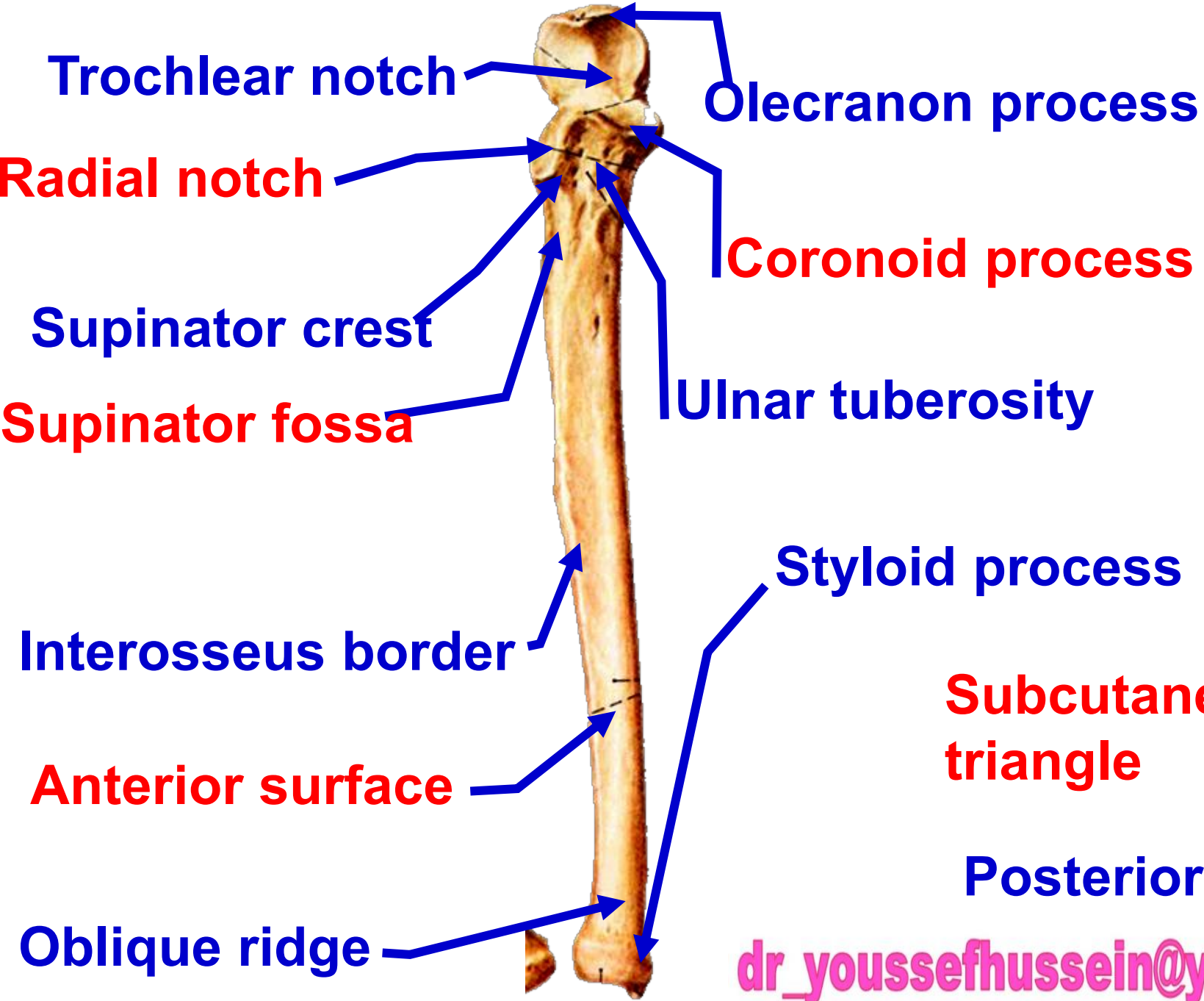
- The **trochlear notch** is directed **anteriorly and superior.**
- The **radial notch** is directed **Laterally.**

Anterior

**Lateral surface
of olecranon**



dr_youssefhussein@yahoo.com



Trochlear notch

Olecranon process

Radial notch

Coronoid process

Supinator crest

Ulnar tuberosity

Supinator fossa

Styloid process

Interosseus border

Subcutaneous triangle

Anterior surface

Posterior border

Oblique ridge

Elbow joint

Joints related to Ulna

Superior radioulnar joint

Middle radioulnar joint

Inferior radioulnar joint

dr_youssefhussein@yahoo.com



Upper end

a) Coronoid process: anterior

- Its **anterior** surface carries a rough Impression called **ulnar tuberosity**.
- Its **lateral** surface carries an articular notch called the **radial notch**.
- The ridge below the posterior border of the radial notch is called the **supinator crest**.
- The depression in front of the supinator crest and below the radial notch is called the **supinator fossa**.

b) Olecranon process: superior and posterior, **Its posterior surface is triangular and subcutaneous.**

2- Shaft

- a) Interosseous border: is a sharp border which is directed laterally.
- b) Anterior border: is only defined in the upper part of the shaft.
- c) Posterior border: begins from the apex of the triangular subcutaneous posterior surface of the olecranon.

1) Anterior surface, The front of the lower 1/4 may show an oblique ridge

2) Medial surface: which is continuous superiorly with the medial surface of the olecranon process.

3) Posterior surface: shows a vertical ridge in its lower 2/3.

3- Lower end (Head)

- The head of the ulna articulates with the ulnar notch of the radius to form the inferior radioulnar joint.
- The head of the ulna does not share in the wrist (radiocarpal) joint because it is separated from the carpus by a triangular cartilaginous articular disc.
- **Styloid process,** projection from the posteromedial part of the head.

dr_youssefhusseini@yahoo.com

dr_youssefhussein@yahoo.com

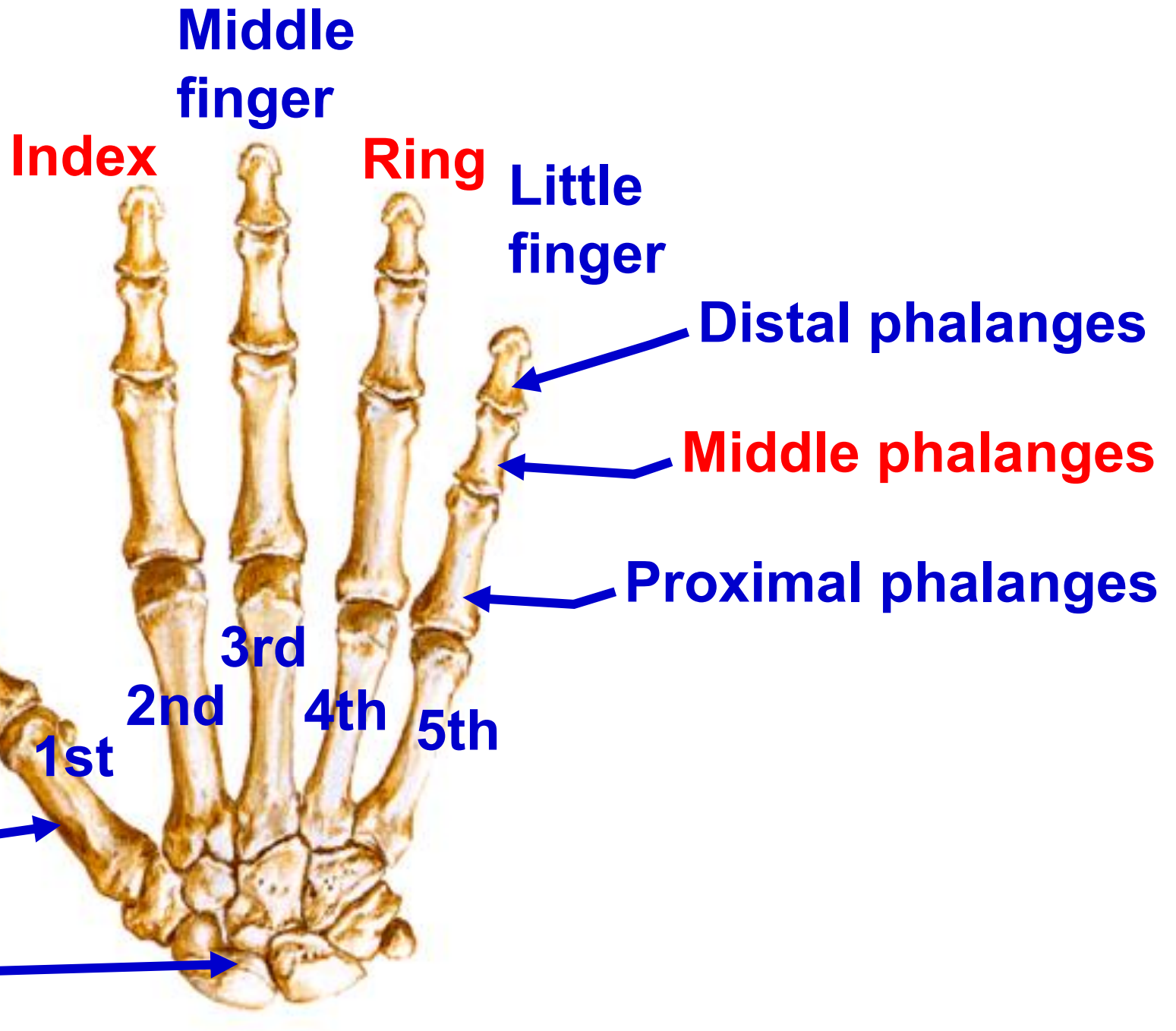


Bones of hand

dr_youssefhussein@yahoo.com

Bones of hand

dr_youssefhussein@yahoo.com



Metacarpal

Carpal bones

Bones of Wrist (dorsal)

Trapezoid شبه منحرف

Capitate صورة رأس

Hamate حامي

Trapezium معين منحرف

Pisiform حمصي

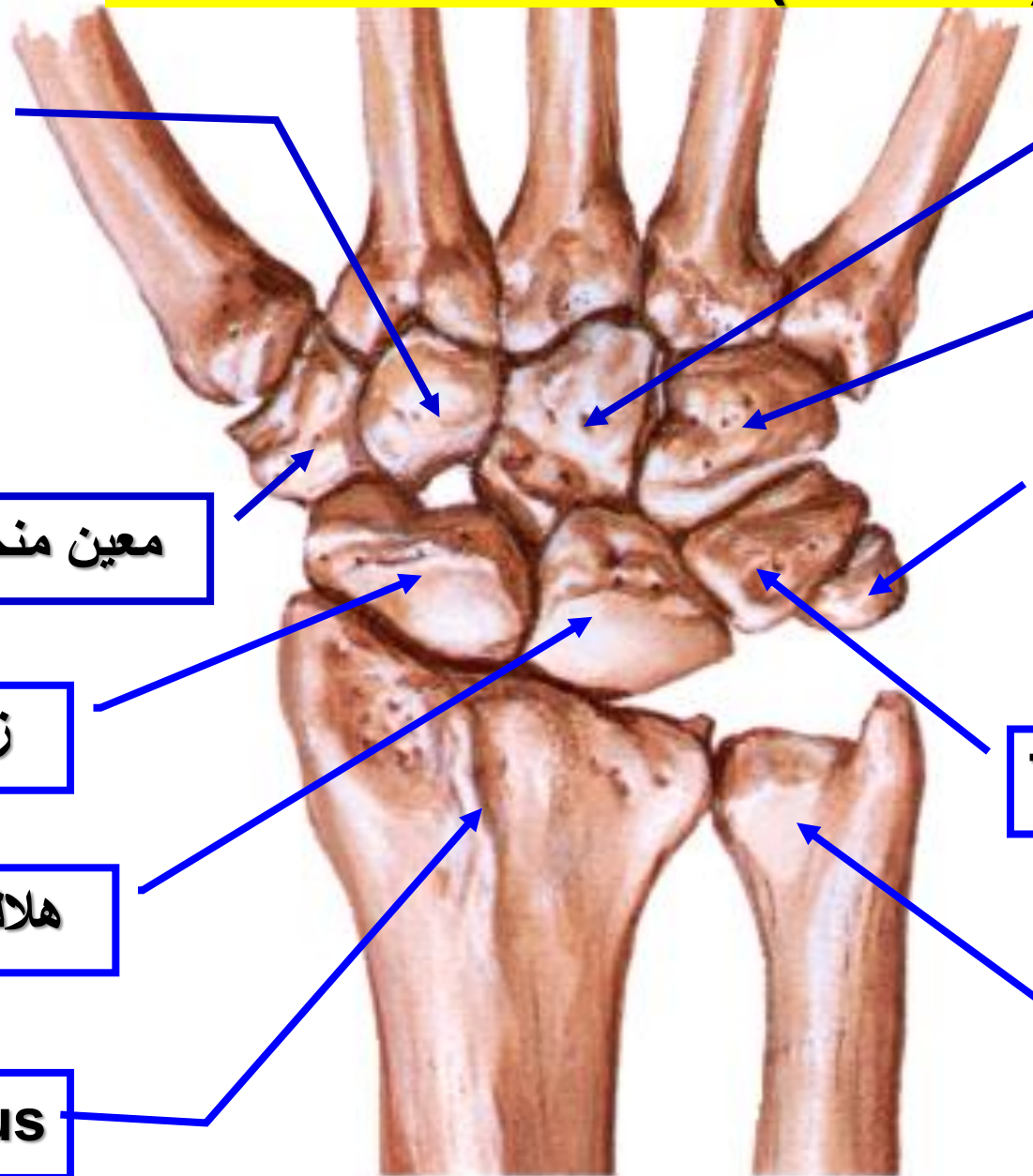
Scaphoid زورقي

Triquetral مثلثي

Lunate هلالي

Distal end of ulna

Distal end of radius



dr_youssefhussein@yahoo.com

