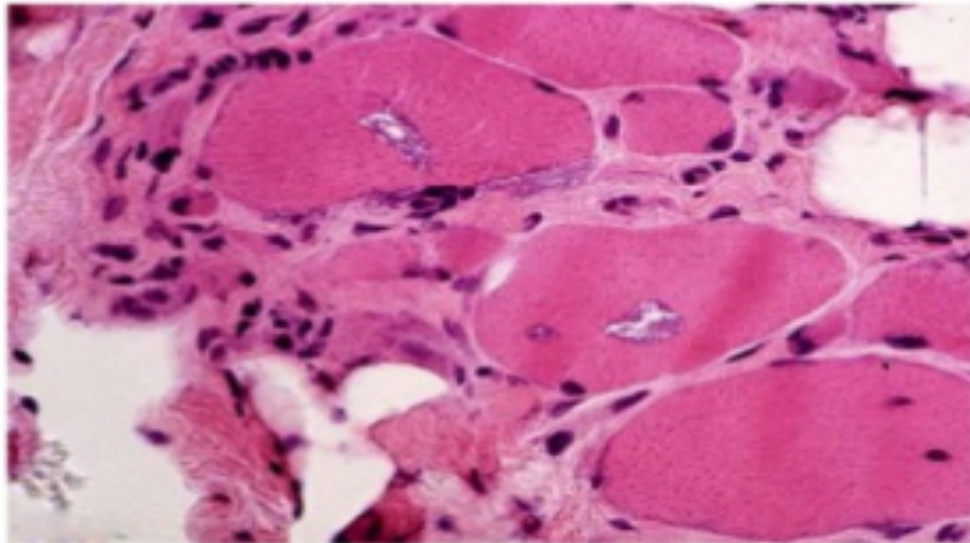


Pathology lab

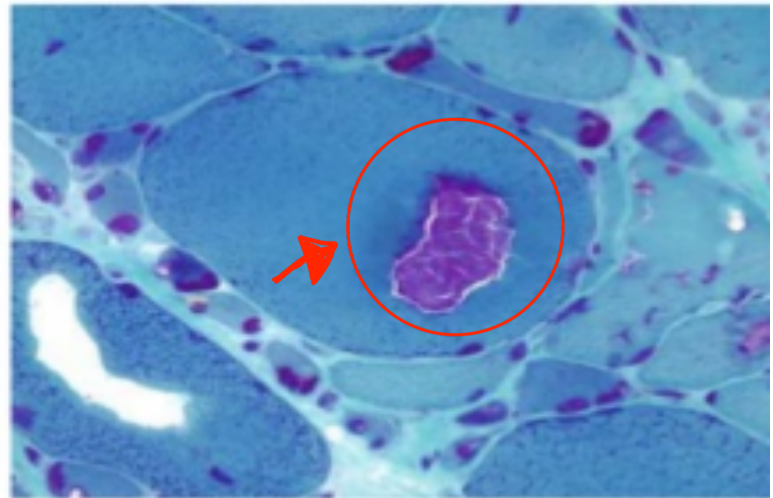
Doctor : omar

“ in this file we just label the notes that doctor said But You have to Know all the information about each picture because the question maybe case or about any gene in our lectures or about the treatment “

Inclusion body myositis



Basophilic rimmed vacuoles



Vacuole filled with granules

Vacuolated muscle fibres infiltrated with CD8/MHC-1 complexes. Beta-amyloid deposits and cytochrome oxidase negative fibres may be seen.

Dermatomyositis



Some patients have
autoantibodies
For this disease
like mi-2 / p155 /
p140

Gottron's papules. Discrete erythematous papules overlying the metacarpal and interphalangeal joints in a patient with juvenile dermatomyositis

Heliotrope Rash

Violaceous
hue

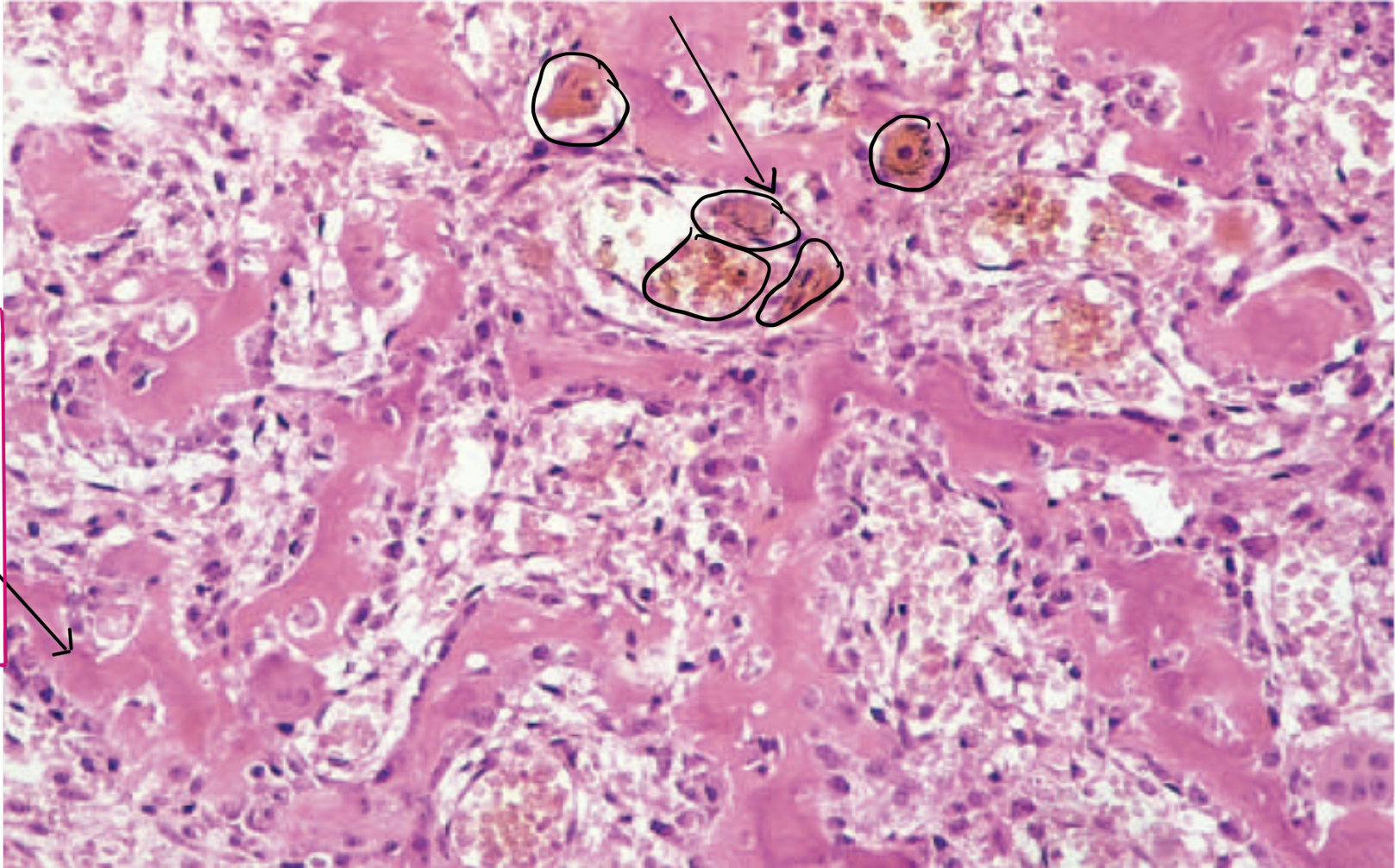


Periorbital
edema



Malar rash

The interspaces are filled by vascularized loose CT

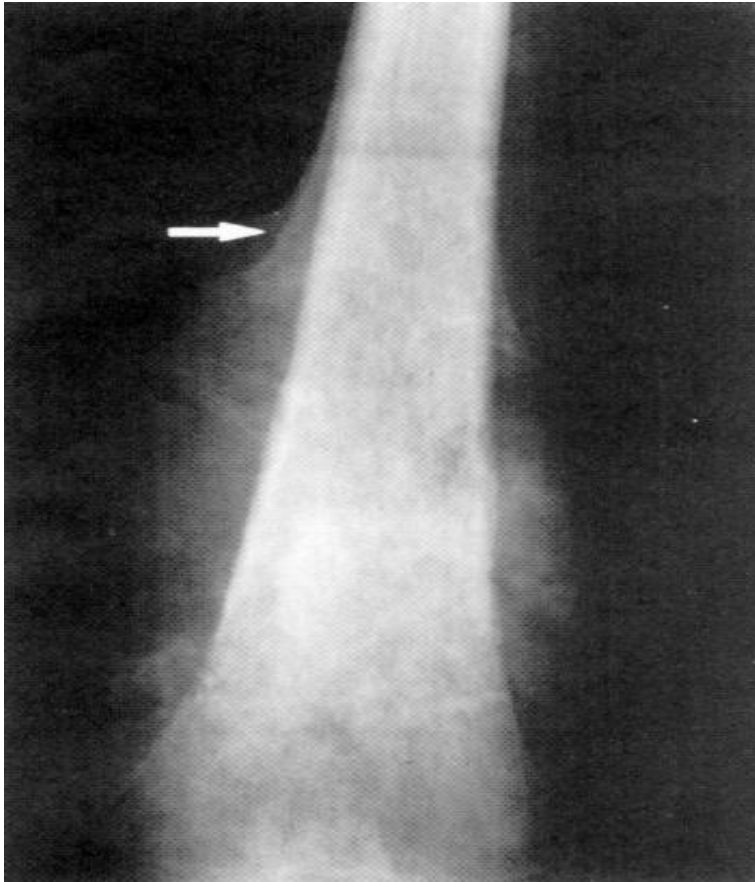


Bone trabeculae is surrounded by single rim of osteoblasts

Osteoid osteoma

Osteosarcoma

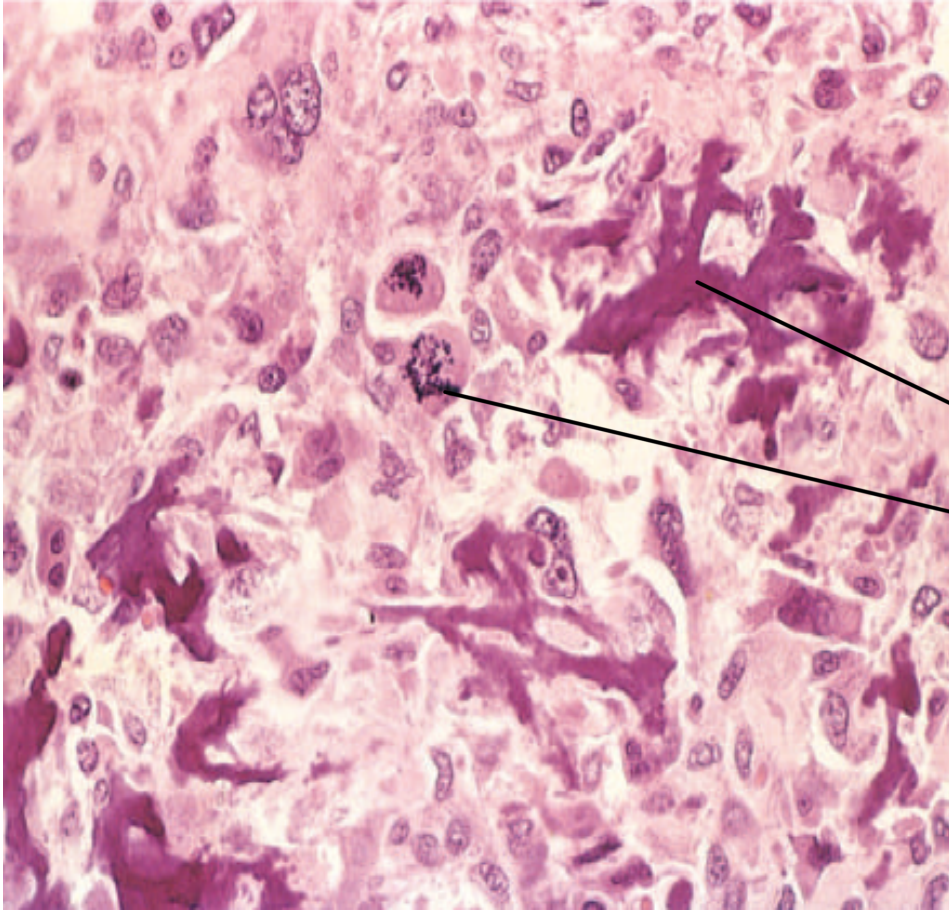
Radiograph



Distal femoral **osteosarcoma** with prominent bone formation extending into the soft tissues. The periosteum, which has been lifted, has laid down a triangular shell of reactive bone known as a **Codman triangle**



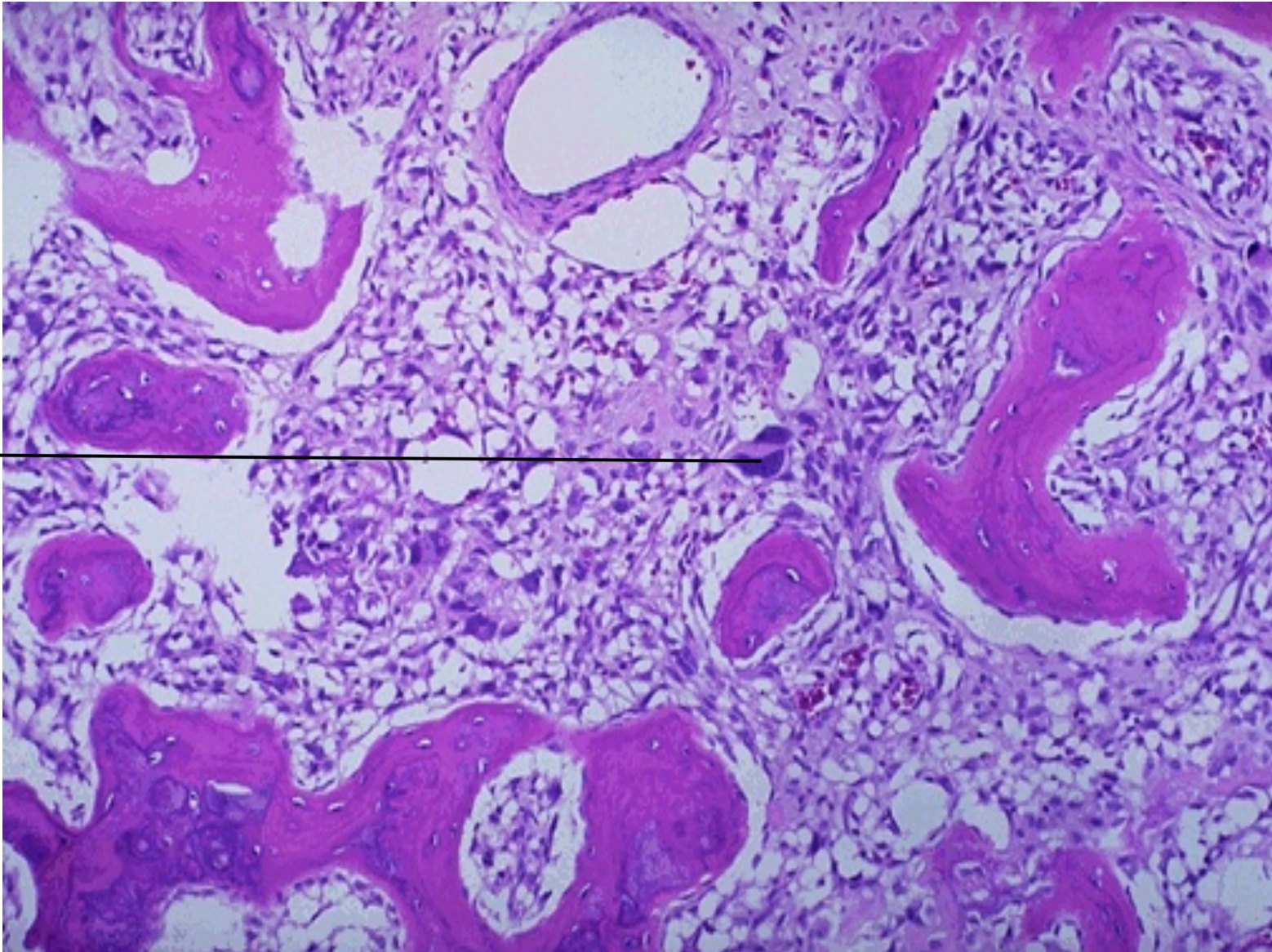
Osteosarcoma of the proximal tibia. The tan-white tumor fills most of the medullary cavity of the metaphysis and proximal diaphysis. It has infiltrated through the cortex, lifted the periosteum, and formed soft tissue masses on both sides of the bone.



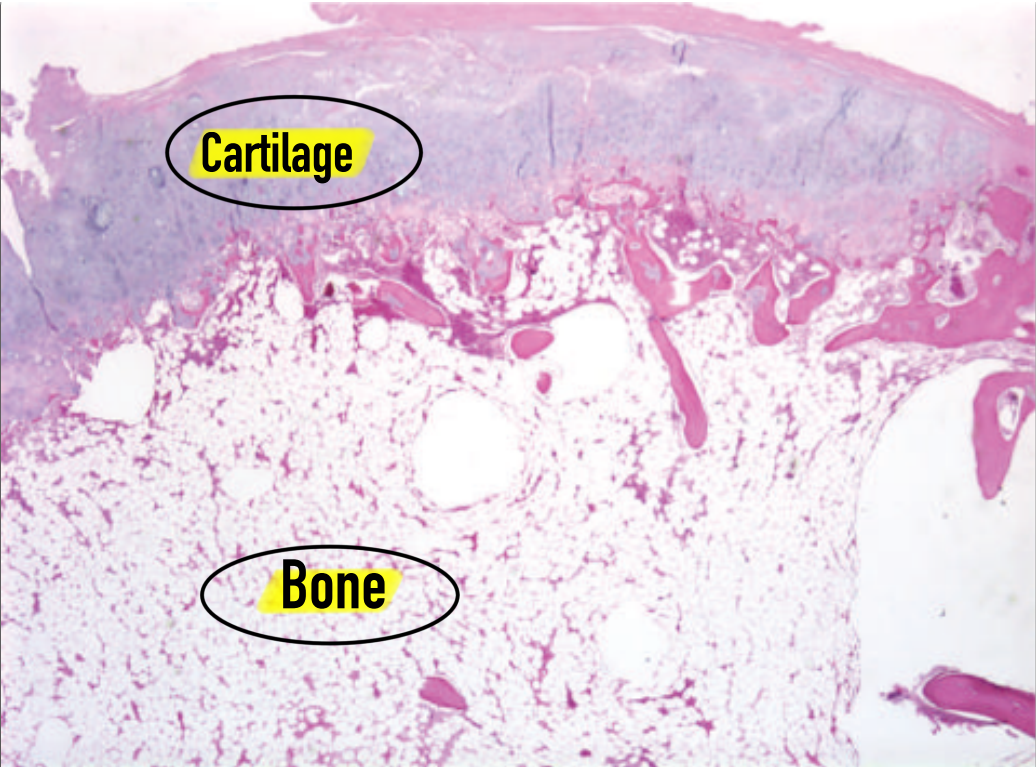
Fine, lacelike pattern of neoplastic bone produced by anaplastic malignant tumor cells in an osteosarcoma. Note the abnormal mitotic figures.

Lacelike bone
trabeculae atypical
osteocytes

Atypical
cells
Indicate
Malignancy ←



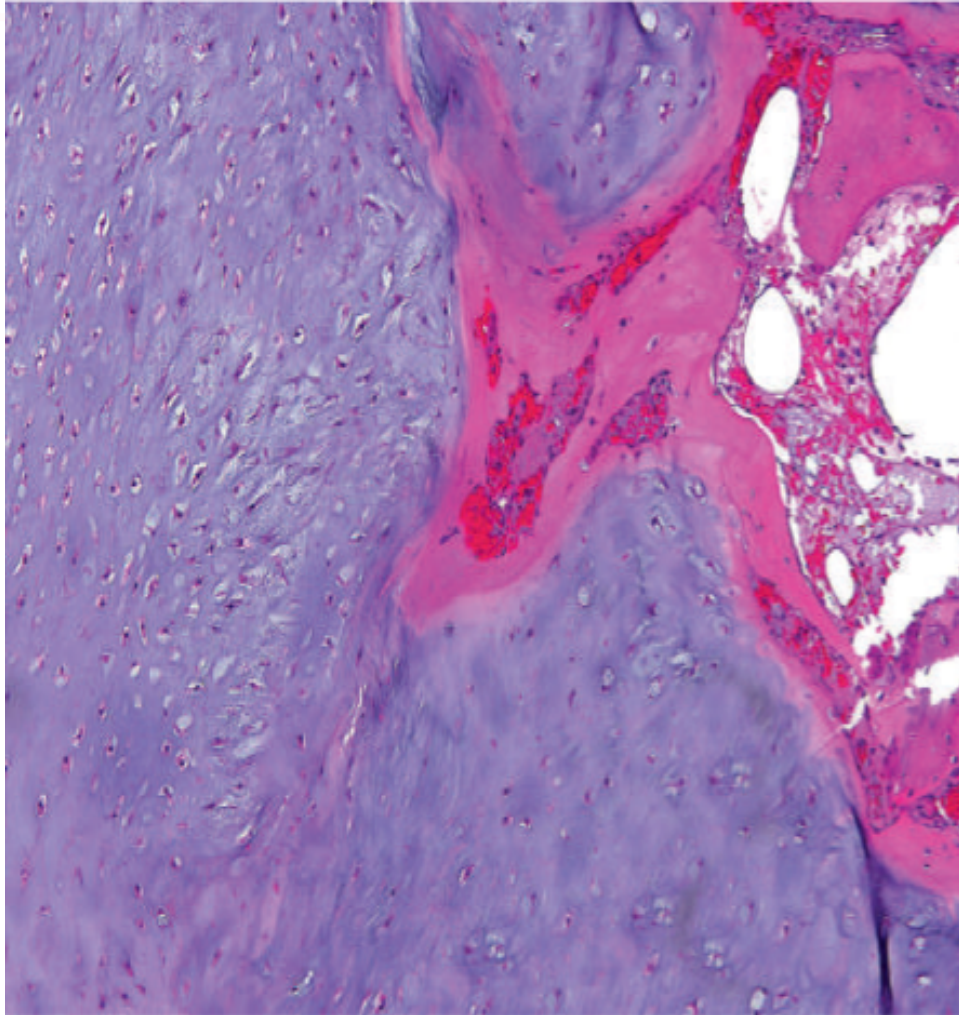
Osteochondroma. Radiograph of an osteochondroma arising from the distal femur. The cartilage cap has the histologic appearance of disorganized growth plate–like cartilage.



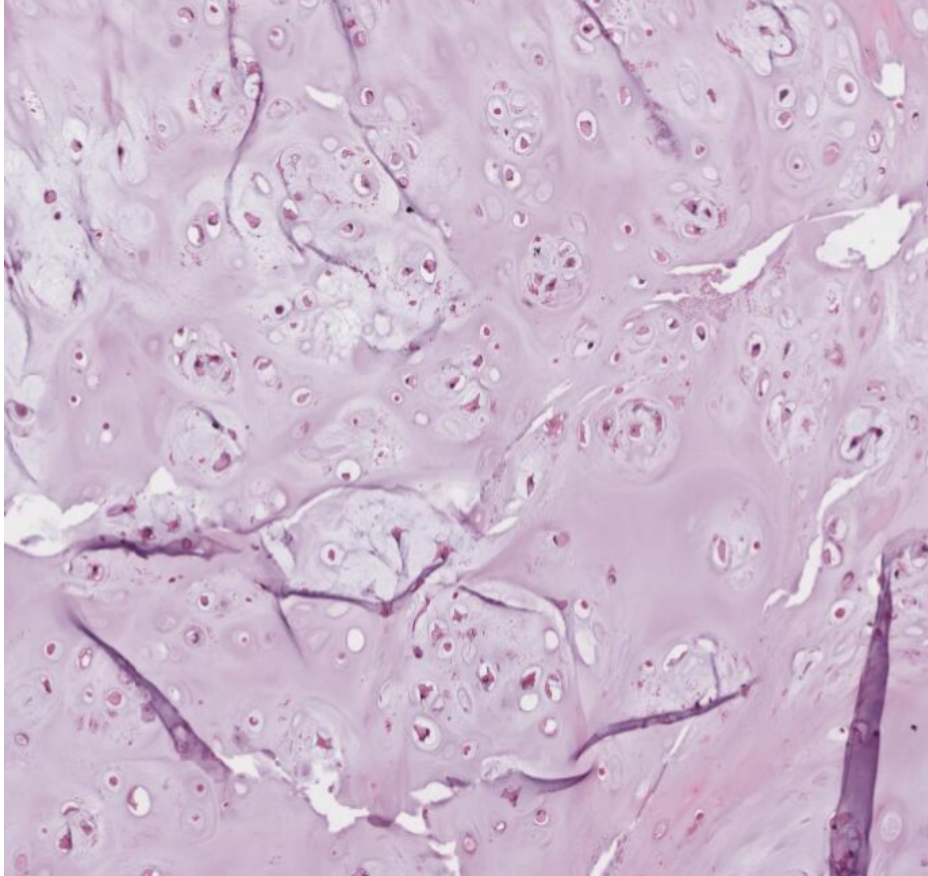


↑

Enchondroma of the proximal phalanx. The radiolucent nodule of cartilage with central calcification thins but does not penetrate the cortex.

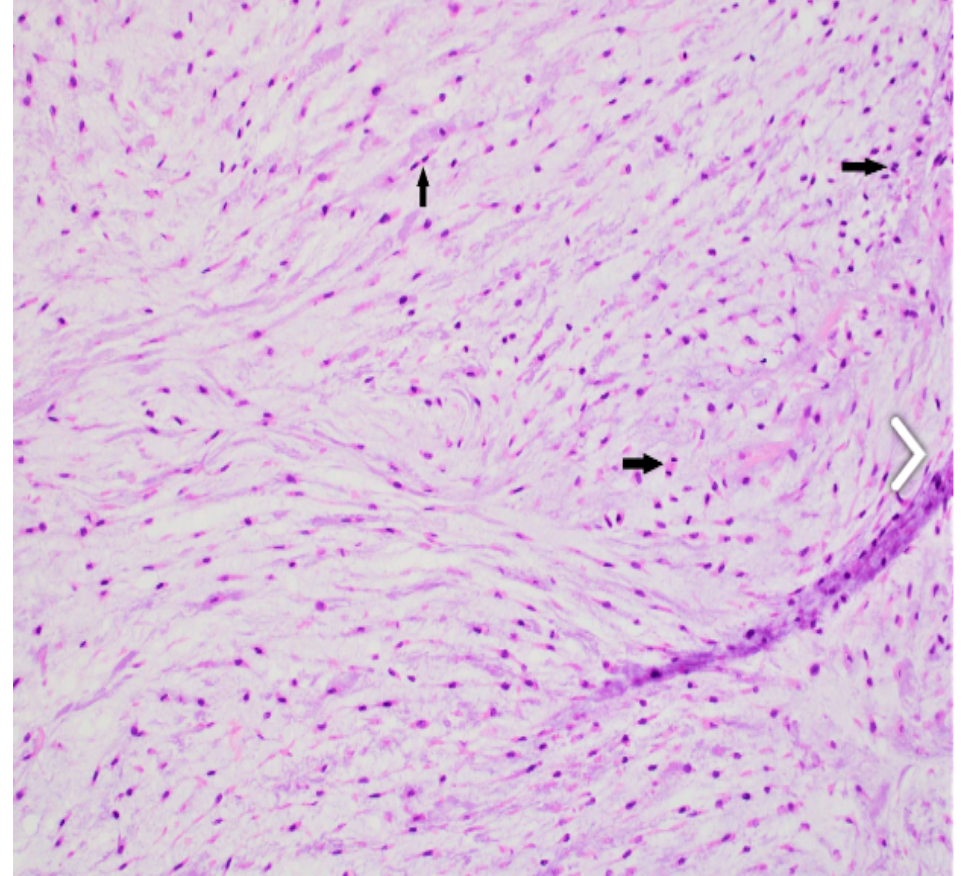


Enchondroma composed of a nodule of hyaline cartilage encased by a thin layer of reactive bone.

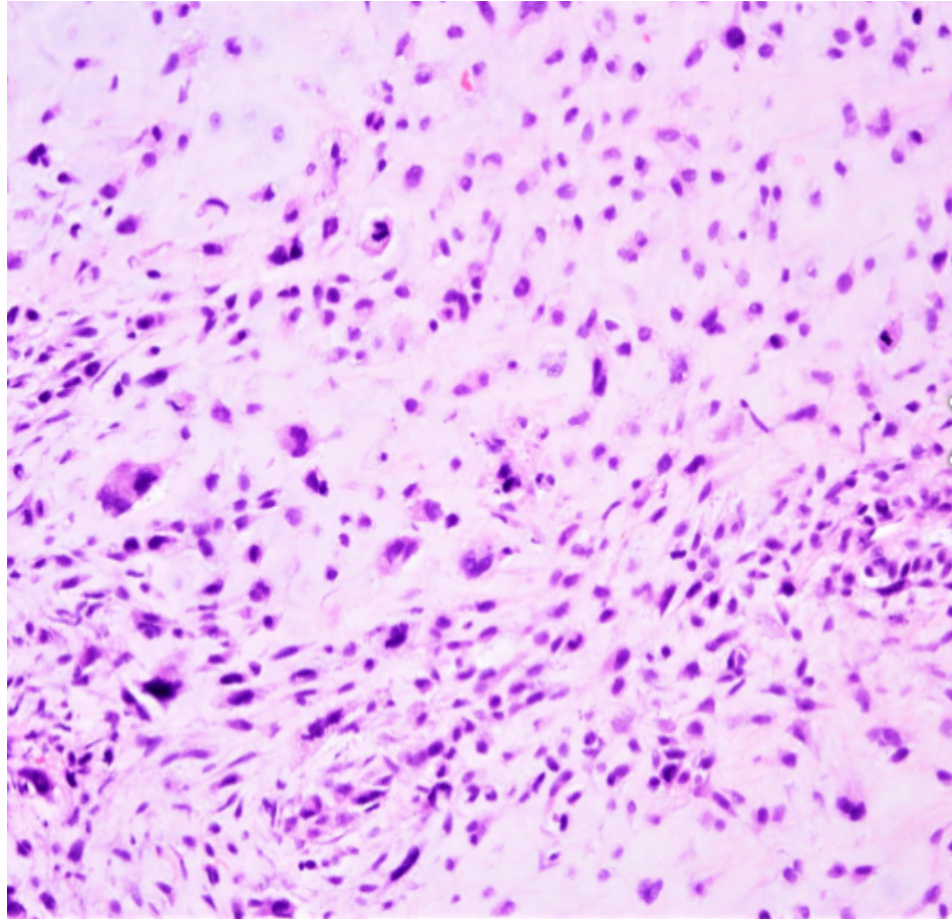


Lacunae contain more
Than one cell

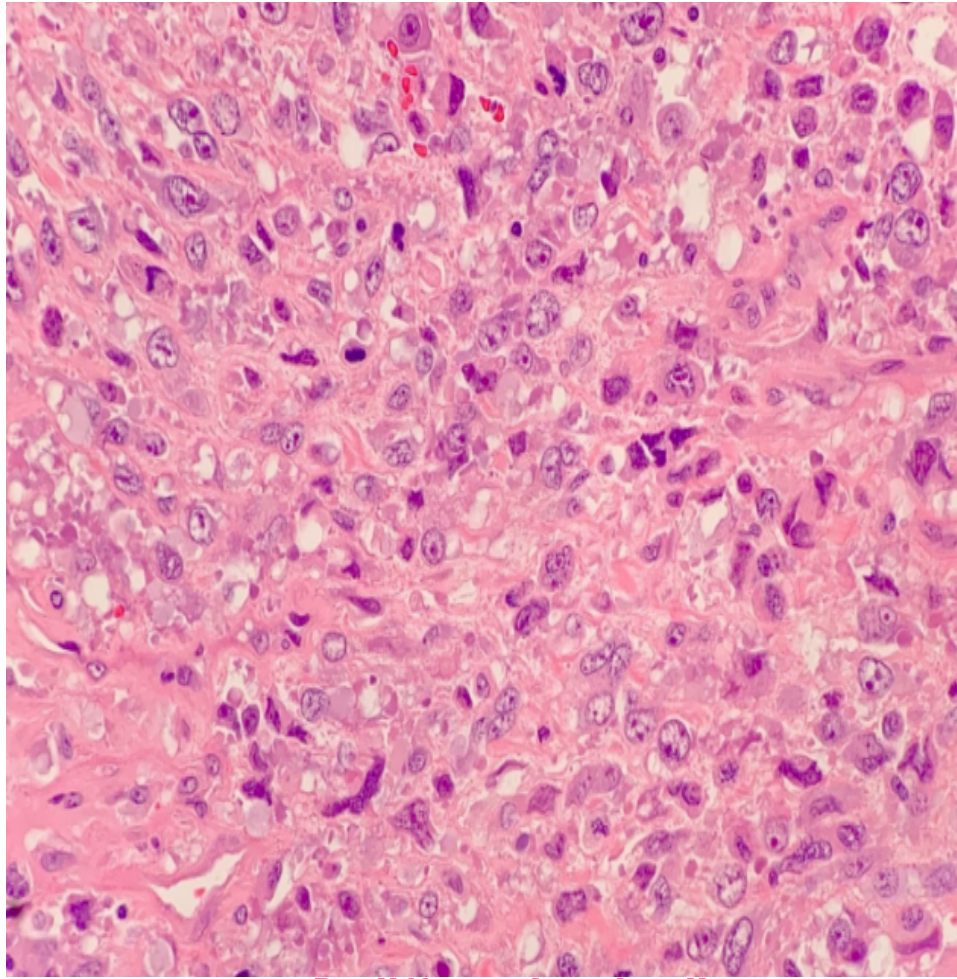
Grade 1 of chondrosarcoma



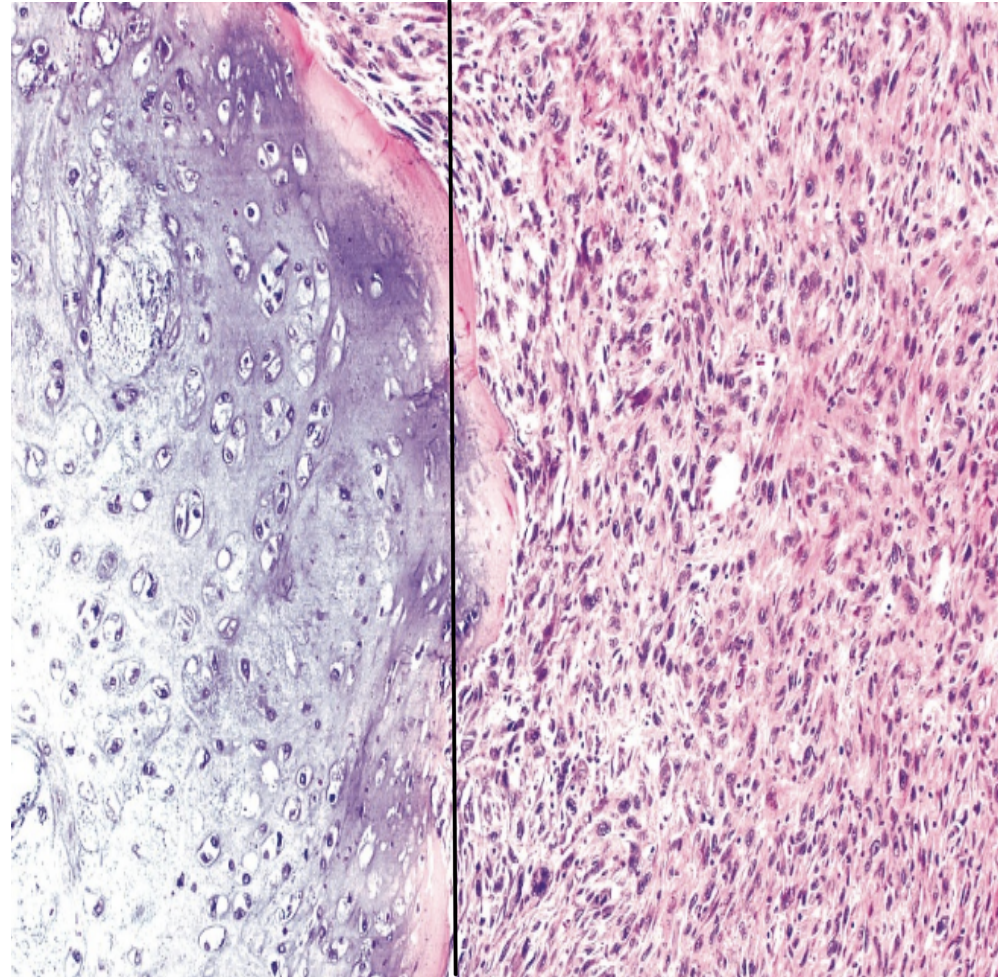
High cellularity, atypia and mitosis



**Grade 3 of
chondrosarcoma
(atypia one and
large in cells)**

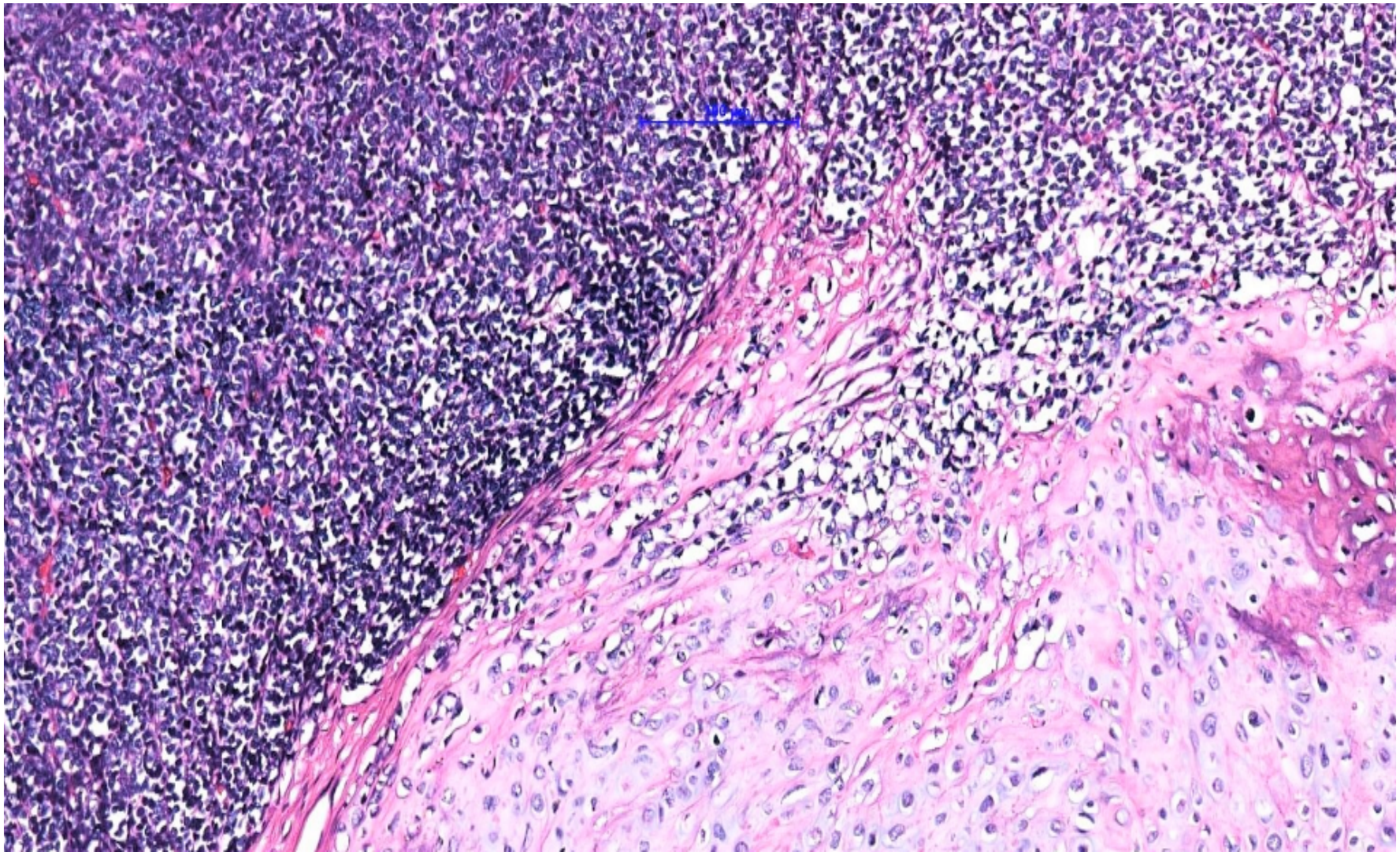


↙ **Dedifferentiated cell
with high cellularity** ↗

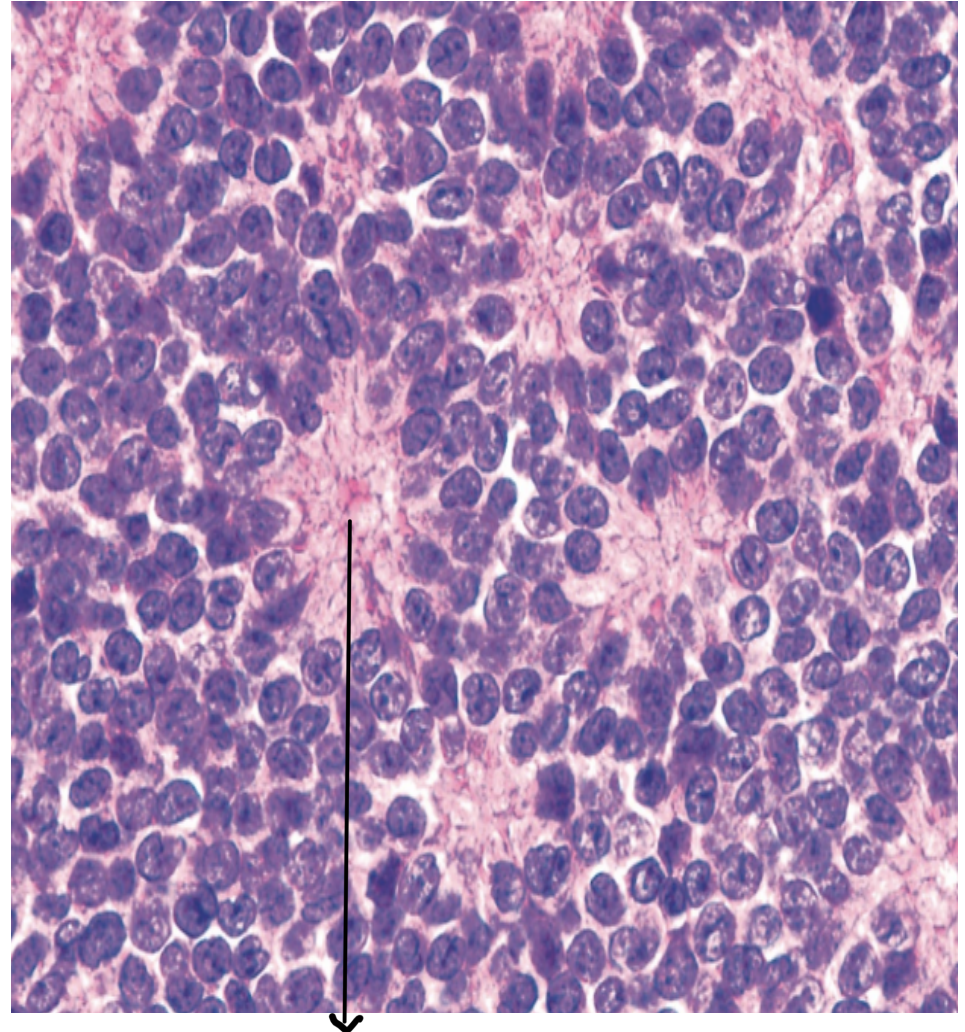
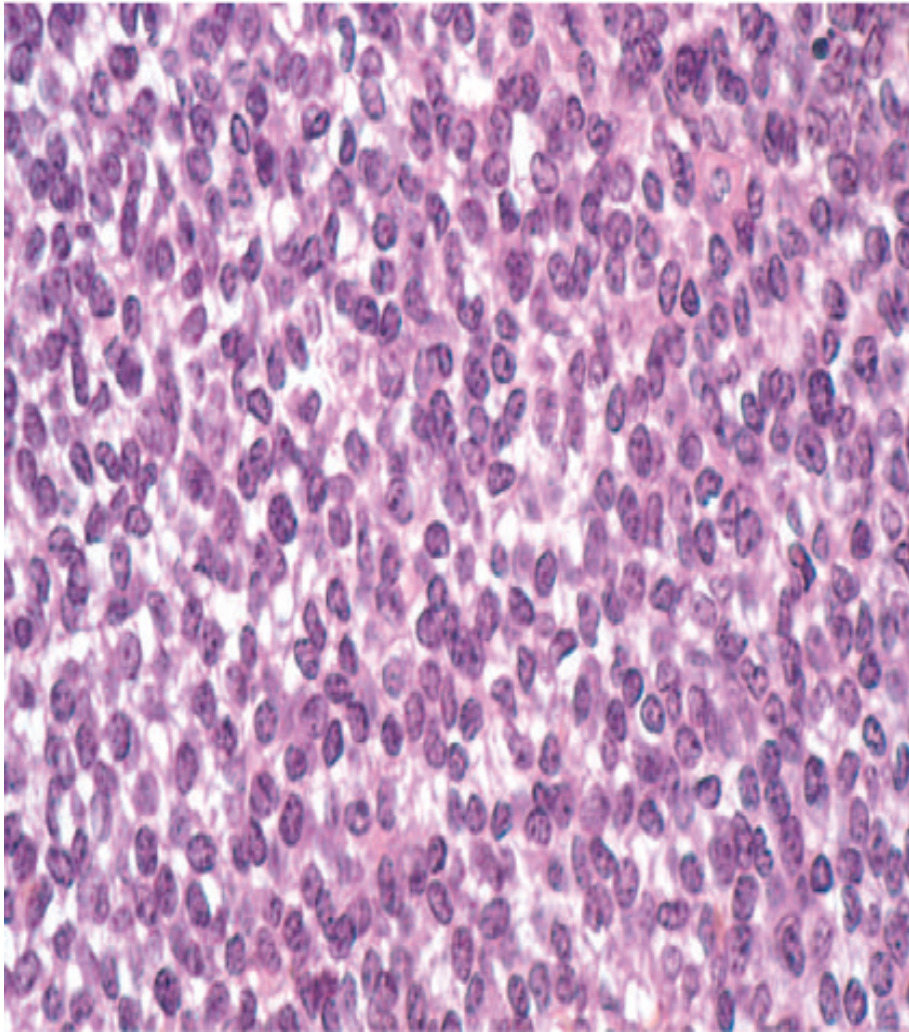


**Conventional
Chondrosarcoma**

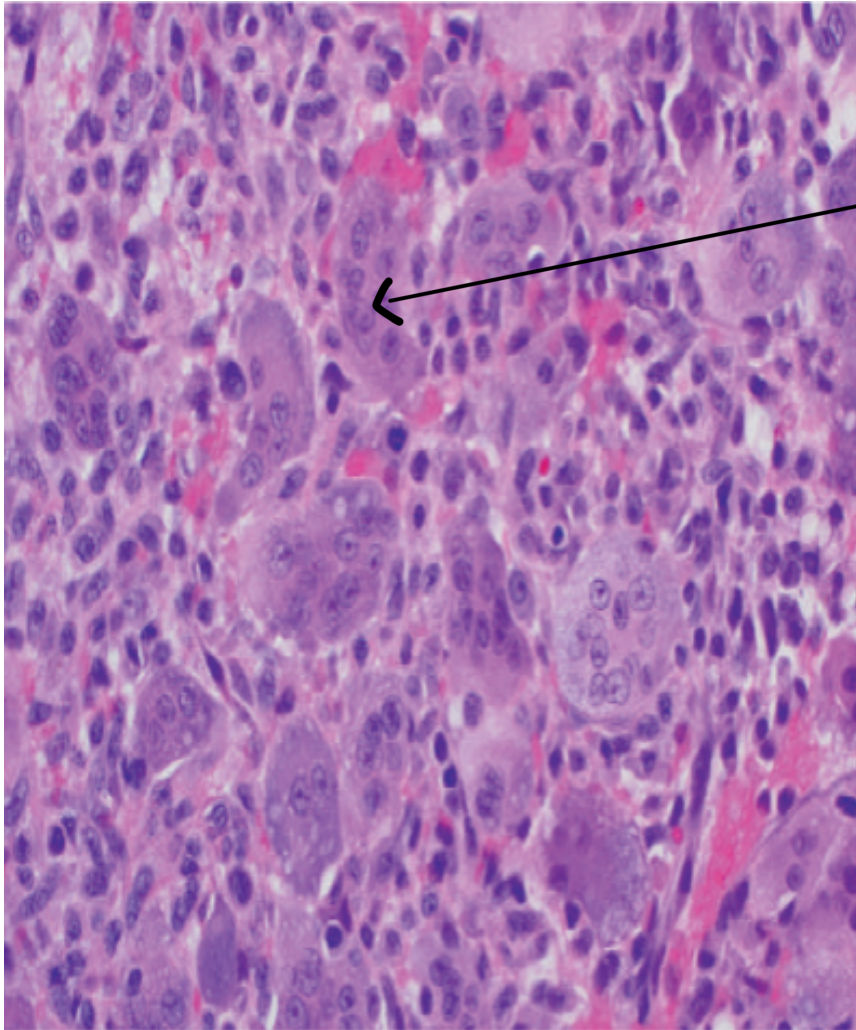
Dedifferentiated



Mesenchymal chondrosarcoma. With small round blue cells

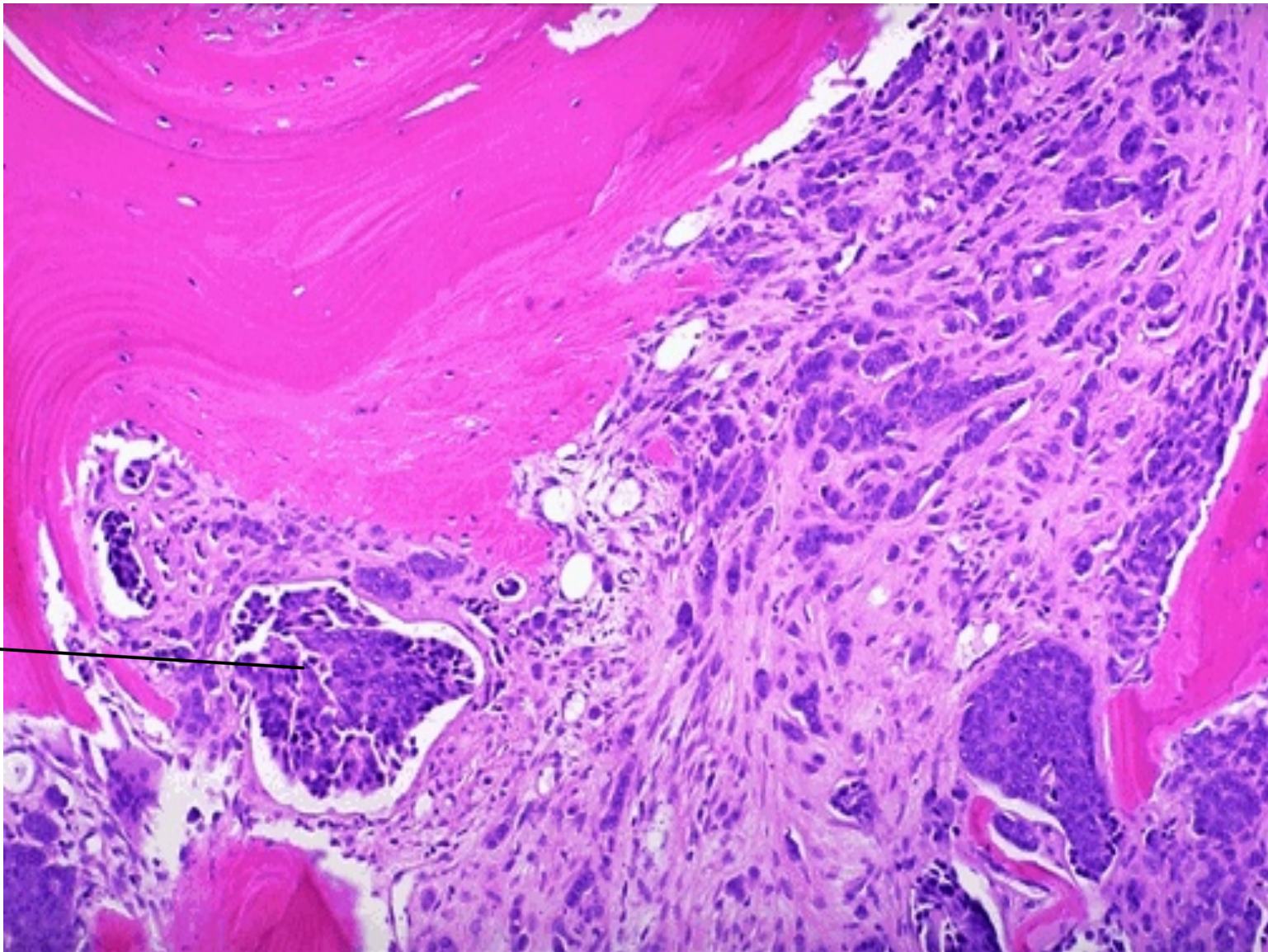


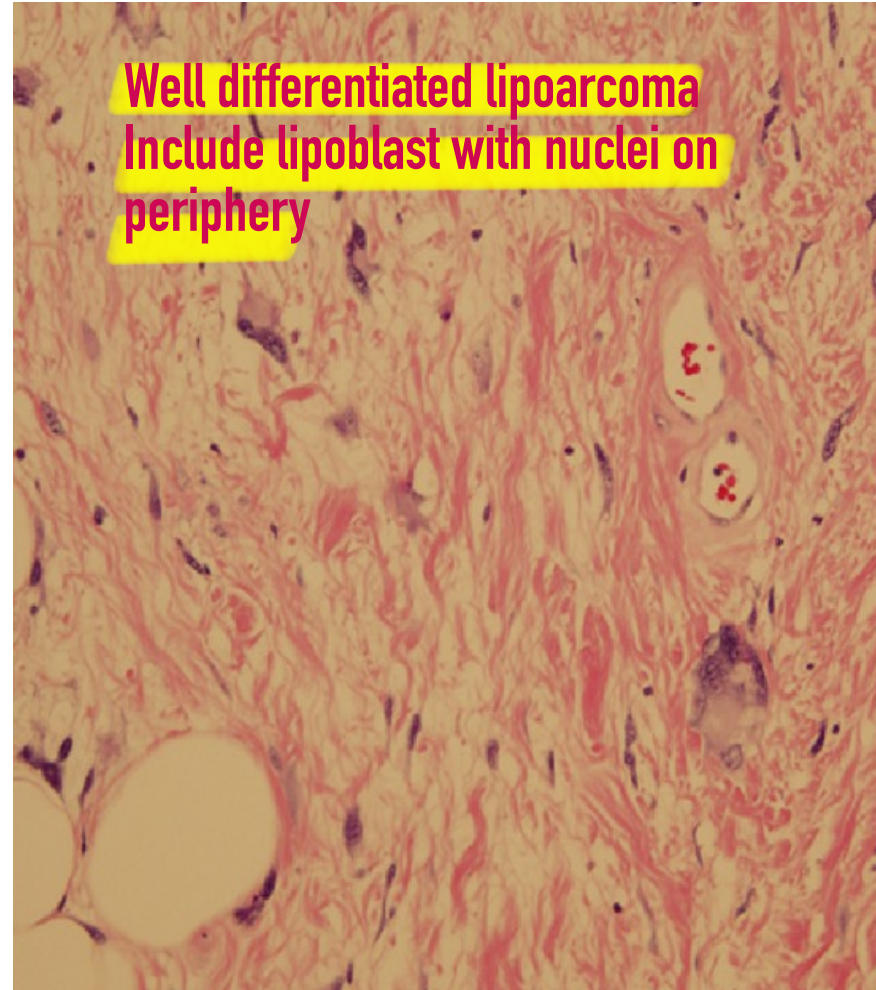
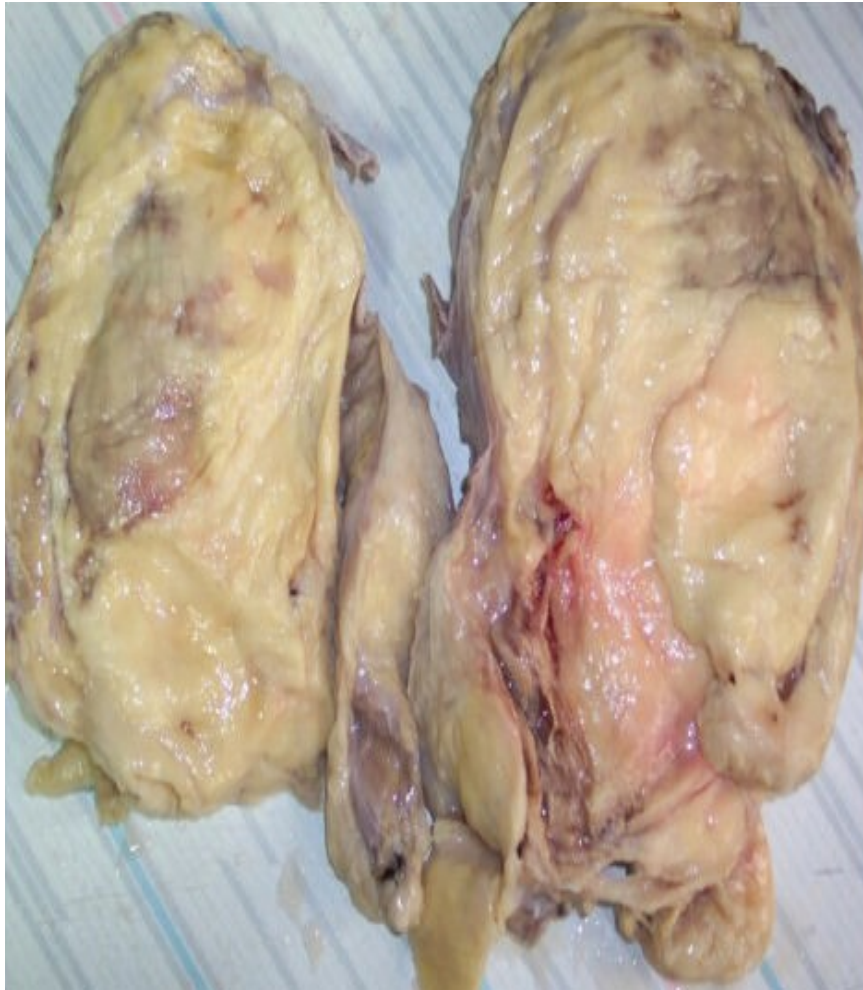
Homer wright rosettes in Ewing sarcoma



Giant cell tumor illustrating an abundance of multinucleated giant cells with background mononuclear stromal cells.

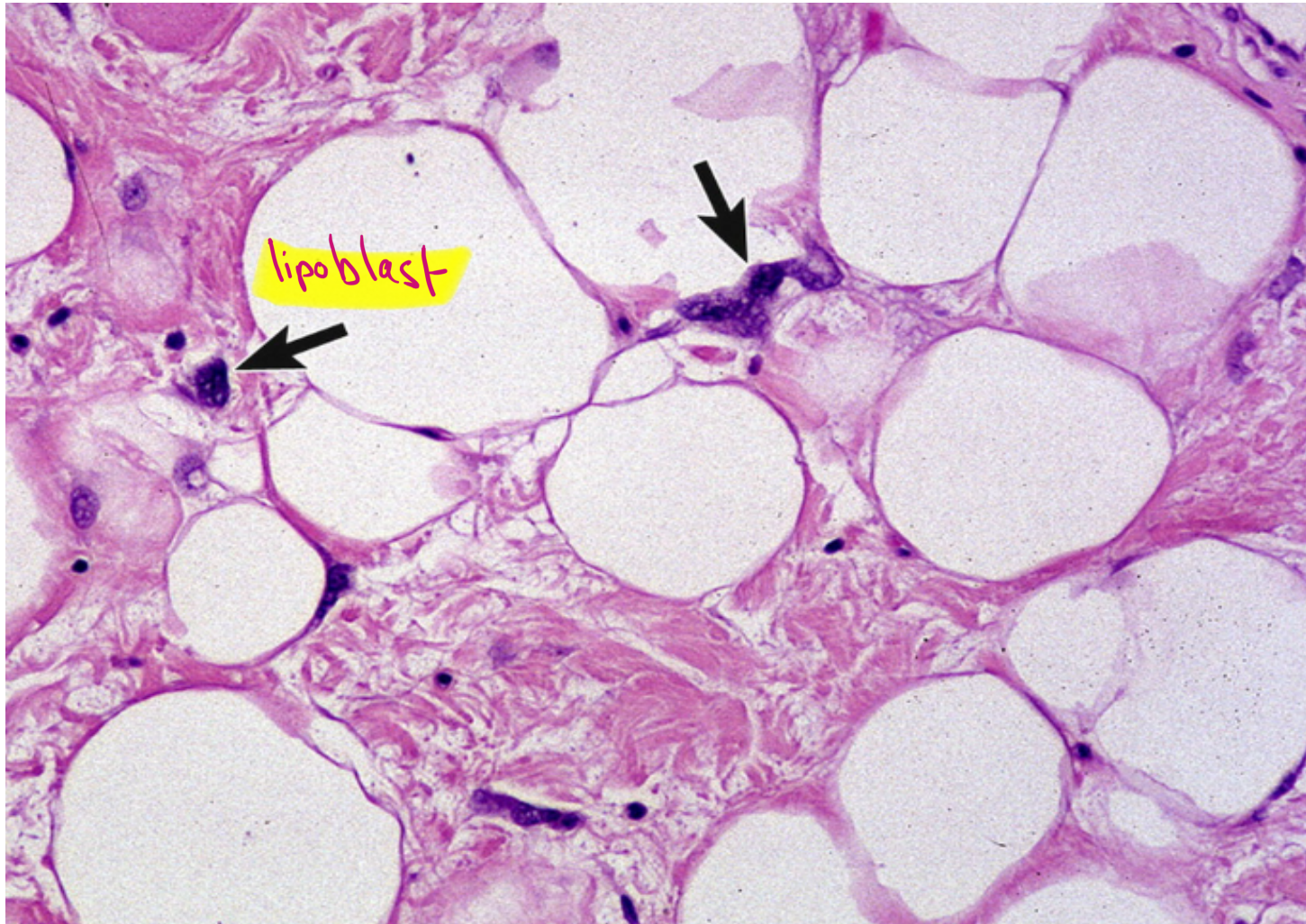
**Blood
Vessel
Filled with
Malignant
Cells**



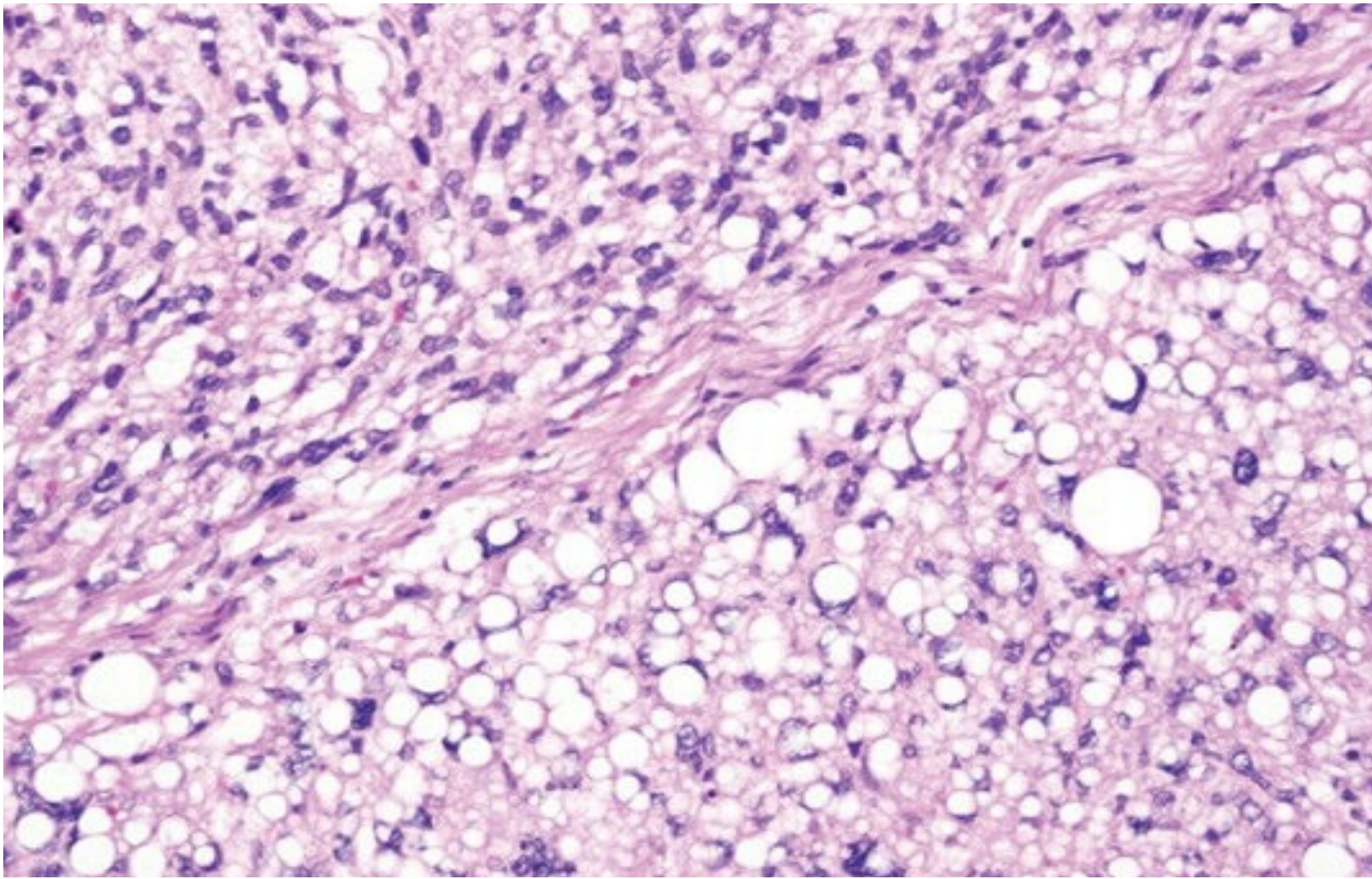


Well differentiated liposarcoma
Include lipoblast with nuclei on
periphery

Liposarcomas

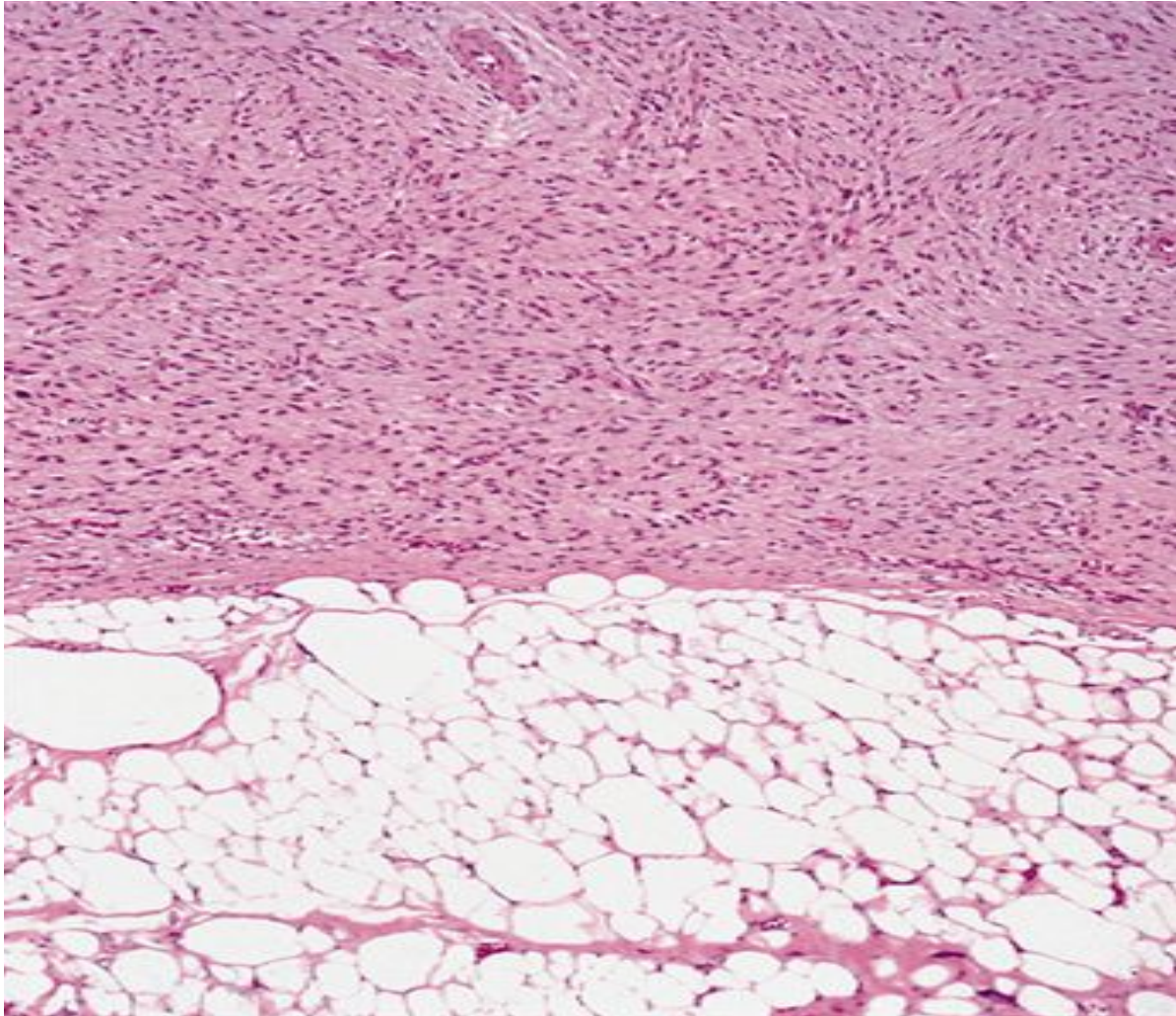


Well
differentiated
Liposarcoma



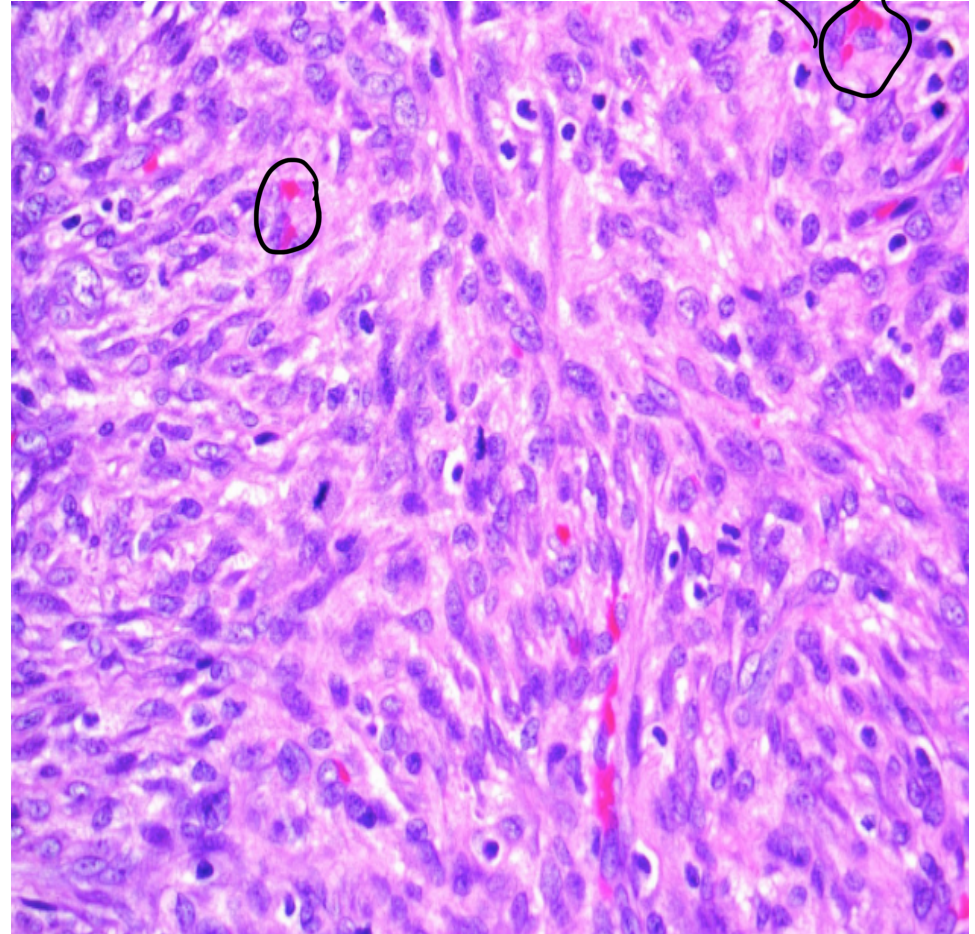
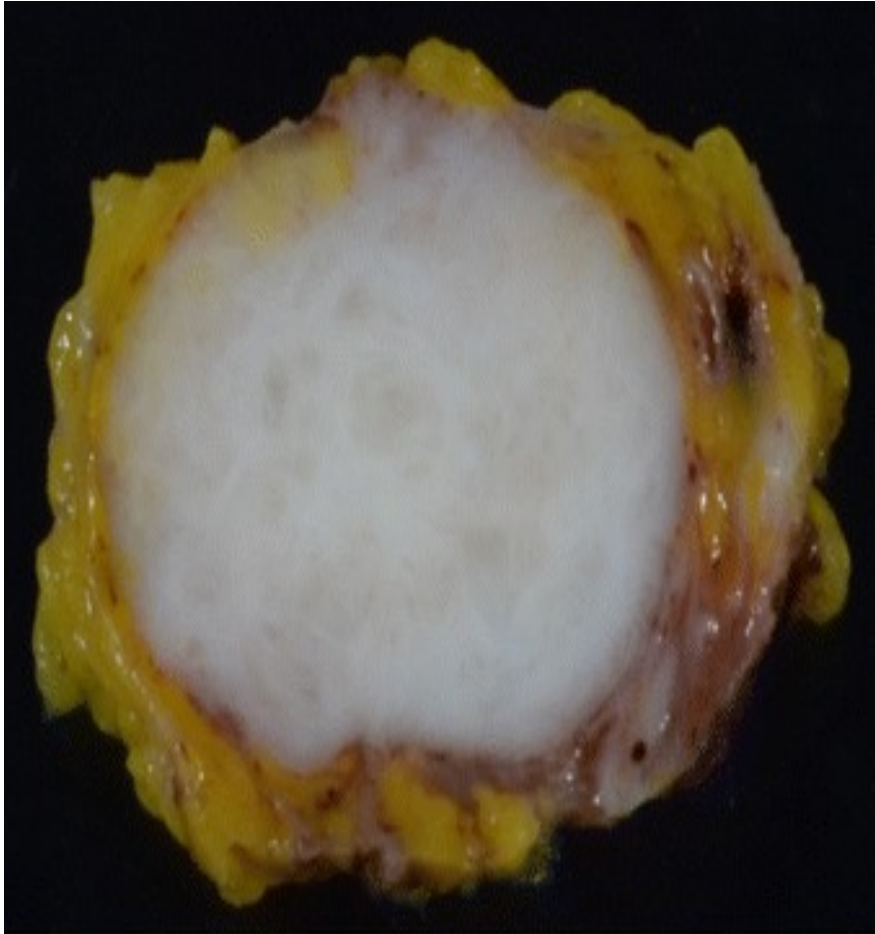
Peomorphic liposarcoma

Well differentiated
Is the lower part of
figure ,While the
upper part is
pleomorphic

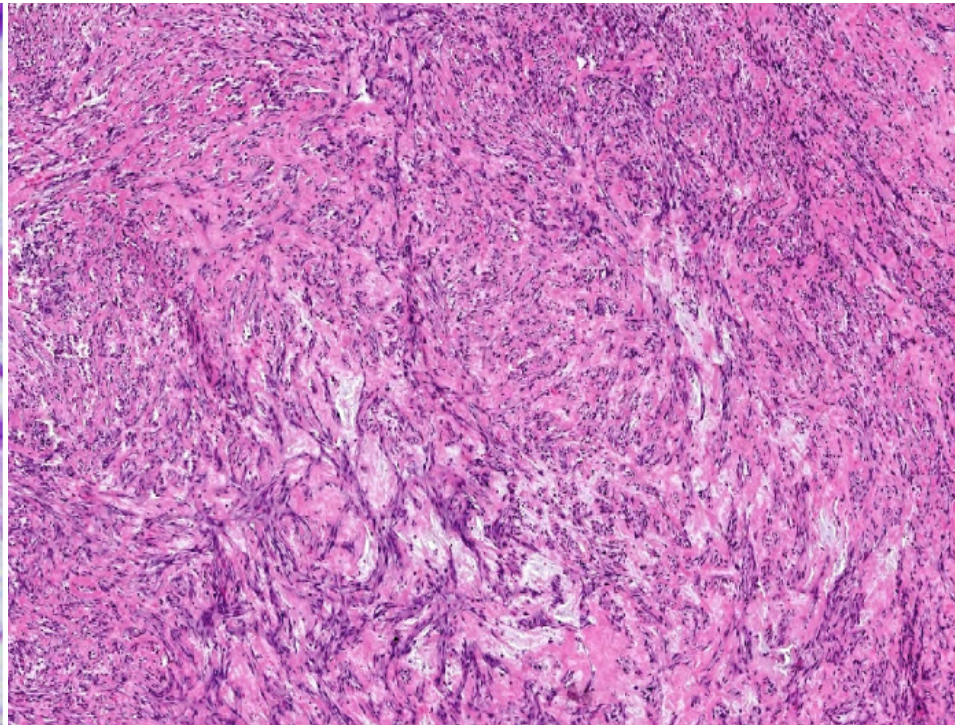
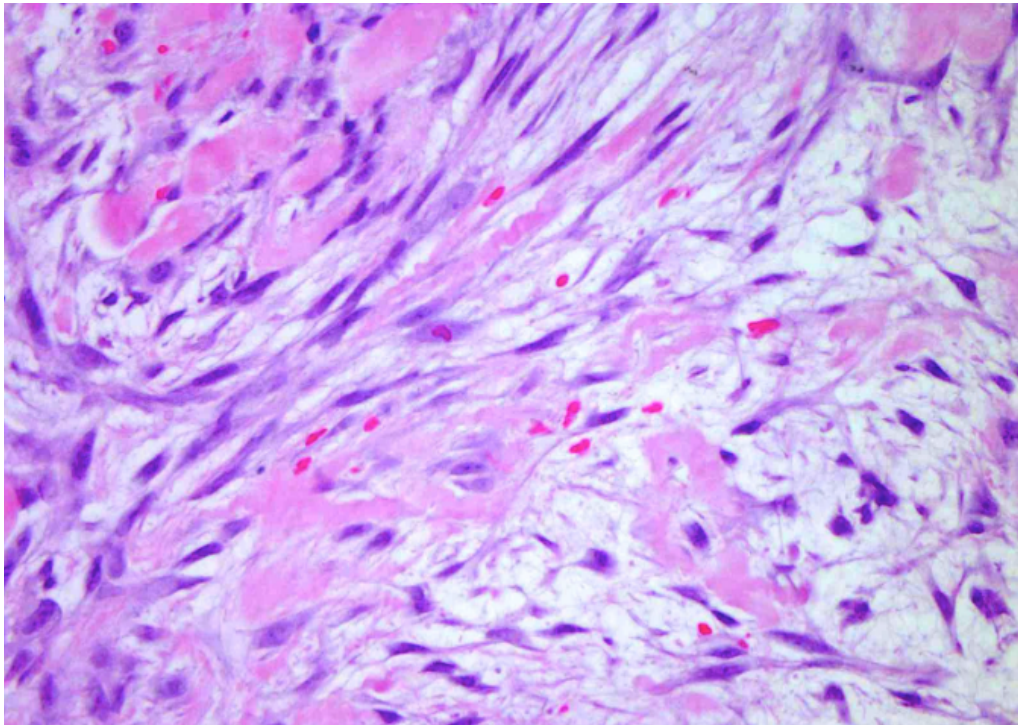


Nodular fasciitis

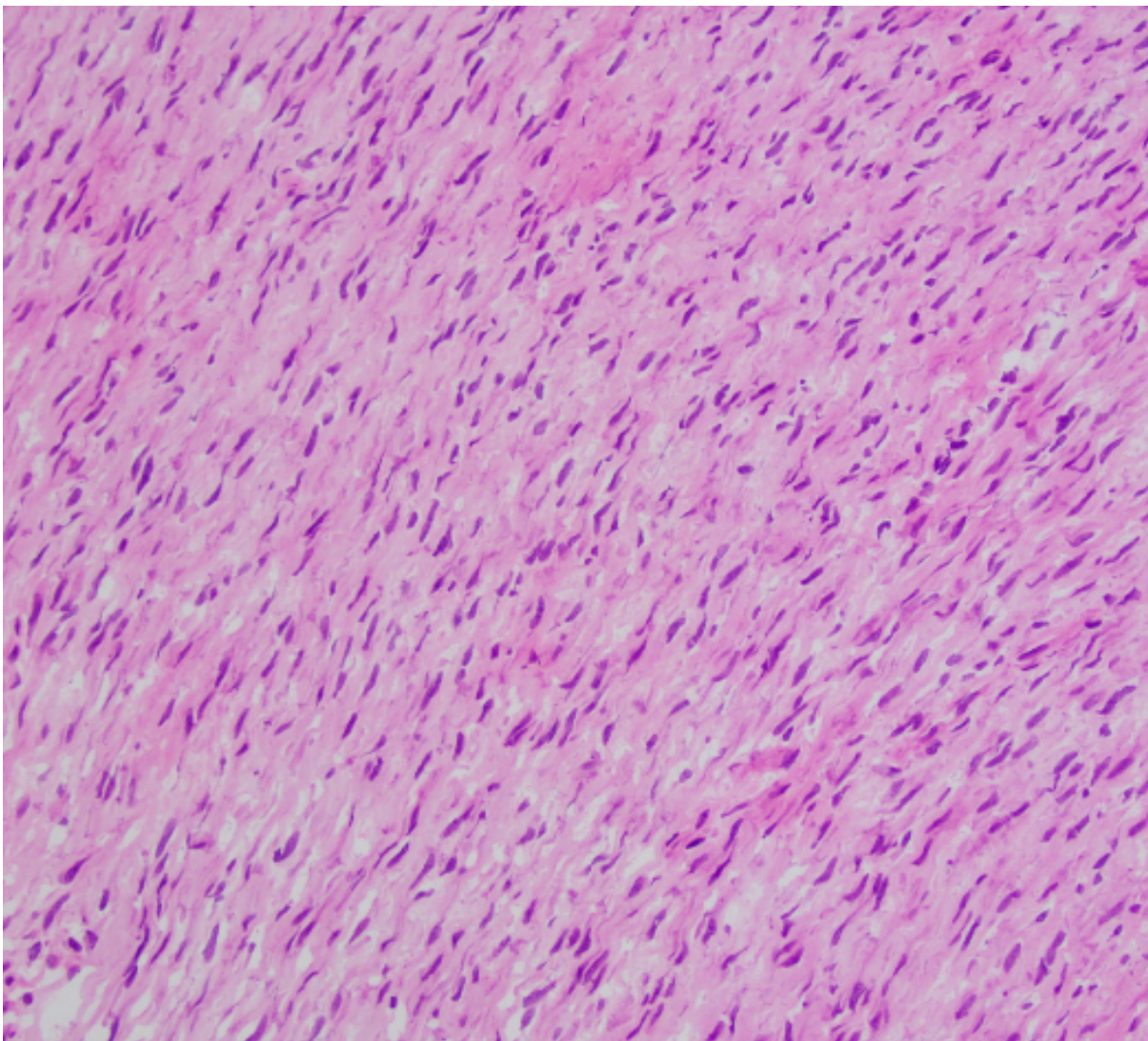
RBC



Zonation (agradient of maturation)




Zonation (a gradient of maturation)



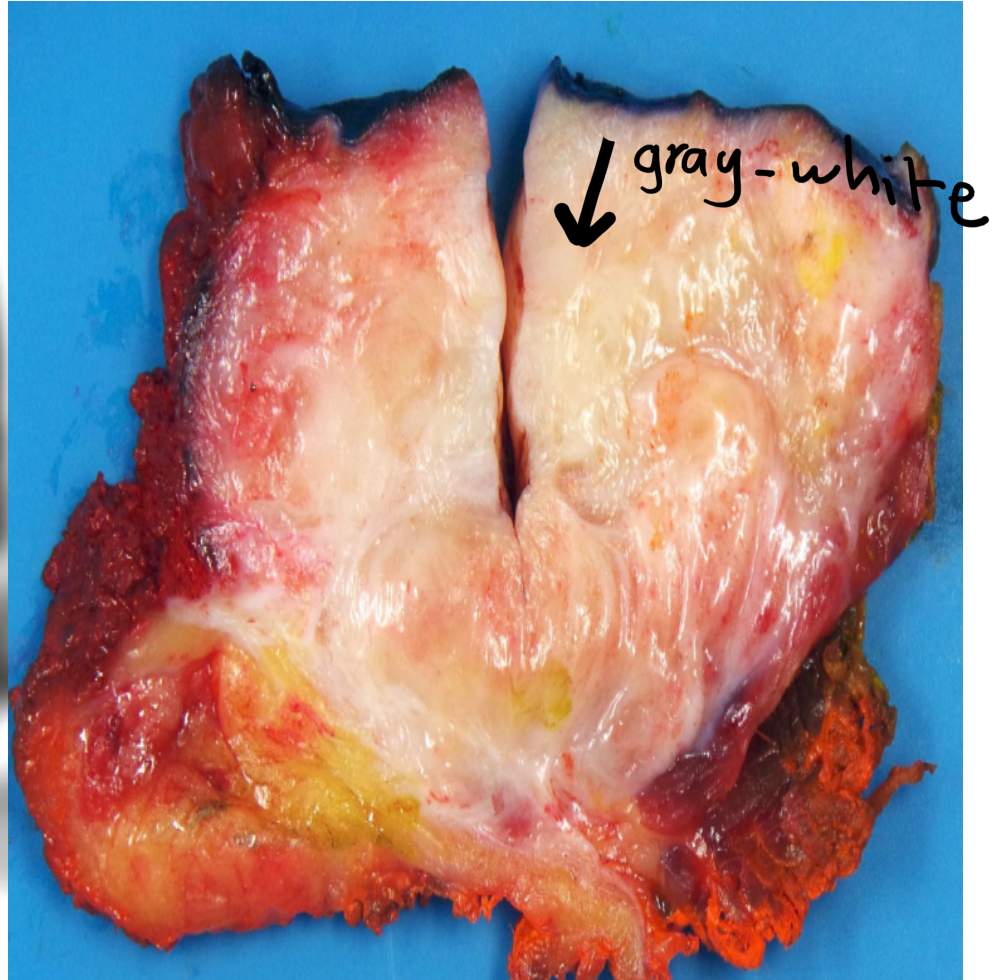
Superficial fibromatoses

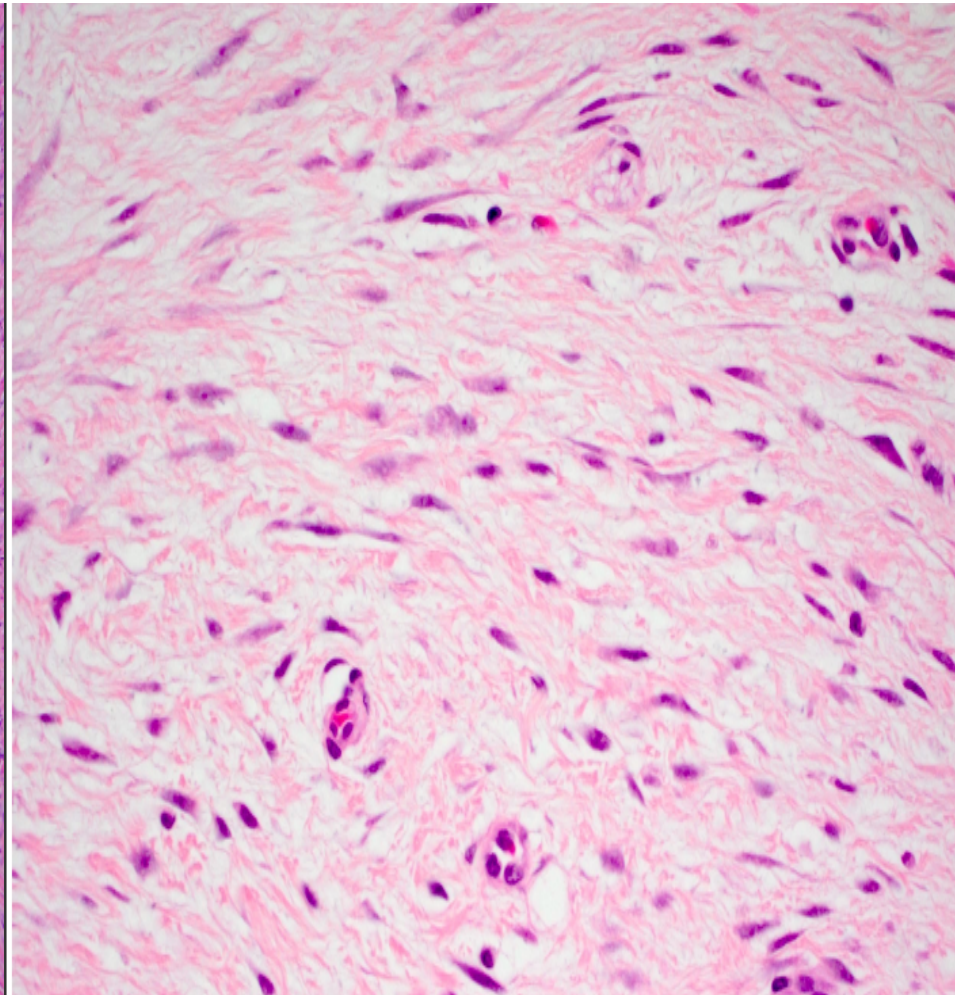
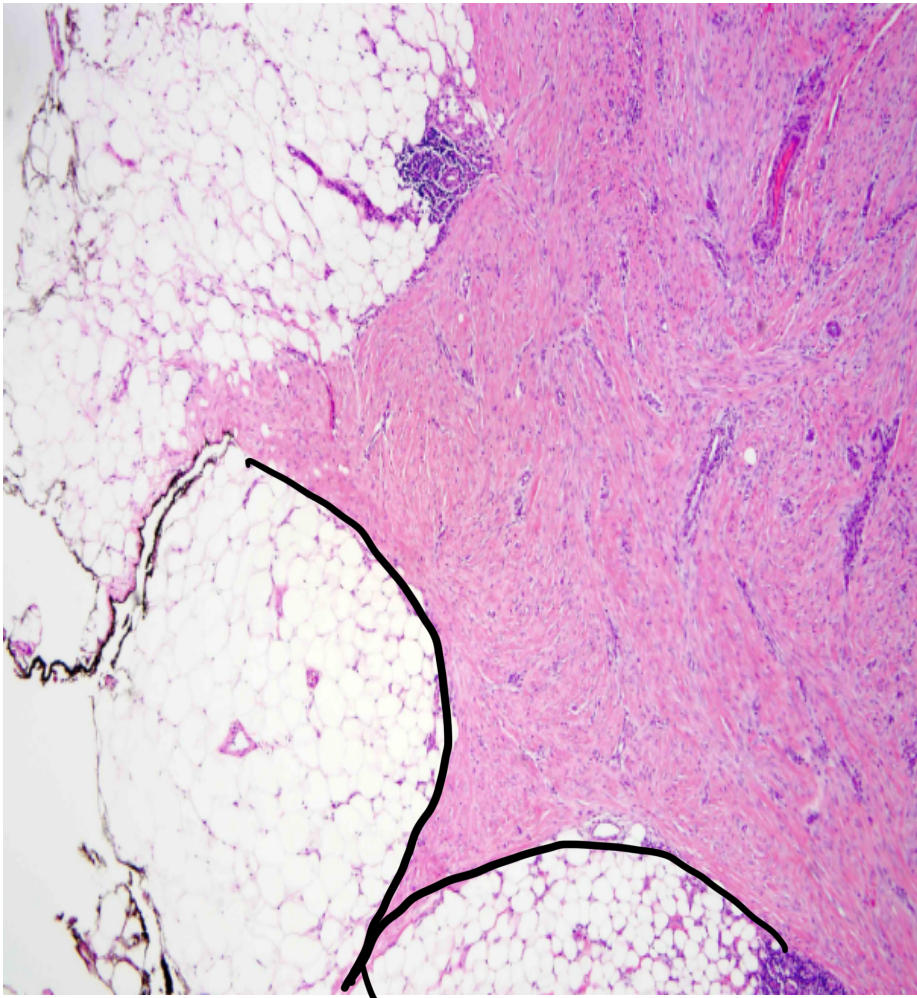
**Characterized by
Nodular with sweeping
fascicles ,surrounding
by abundant dense
collagen**



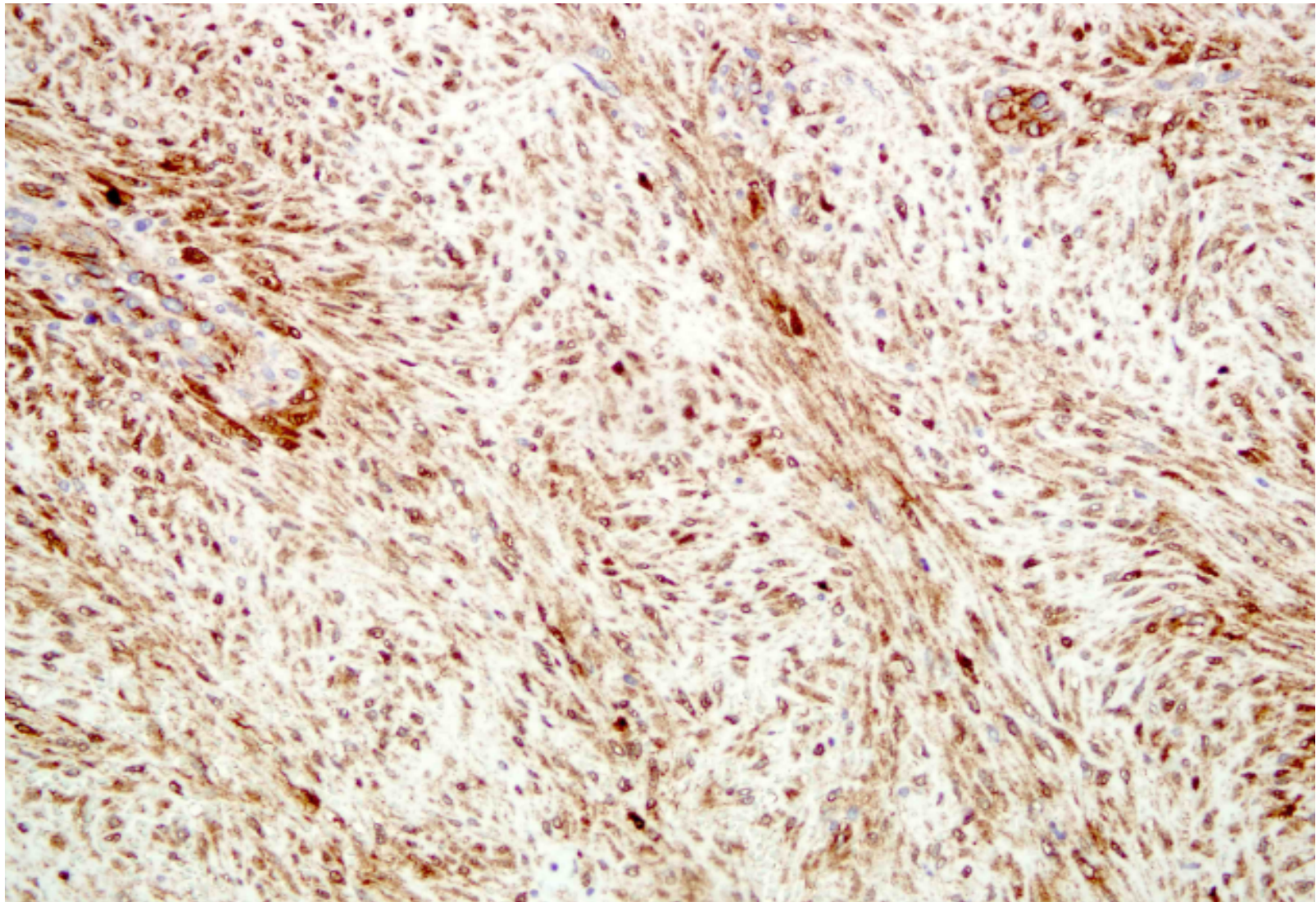
Rubbery, tough
and have marked
infiltration of
surrounding
muscle nerve
and fat

Deep fibromatosis

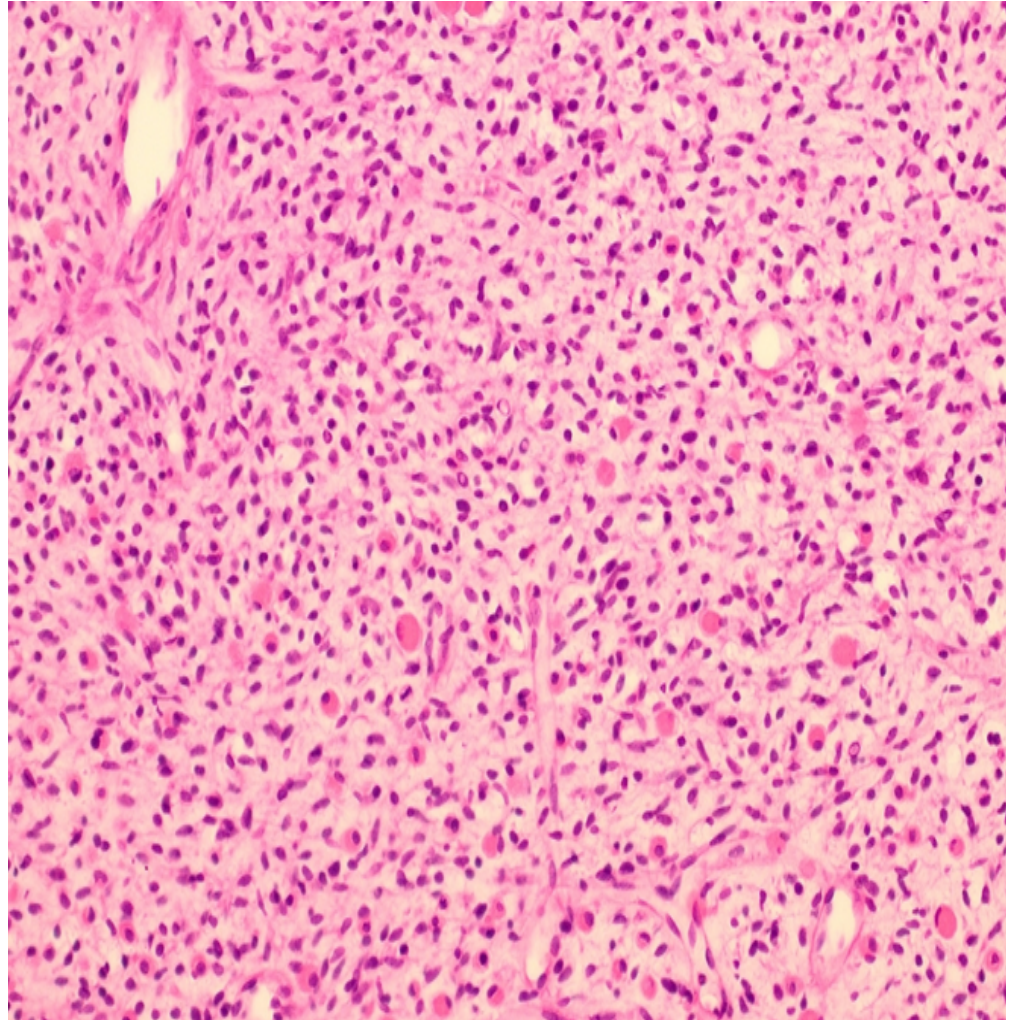




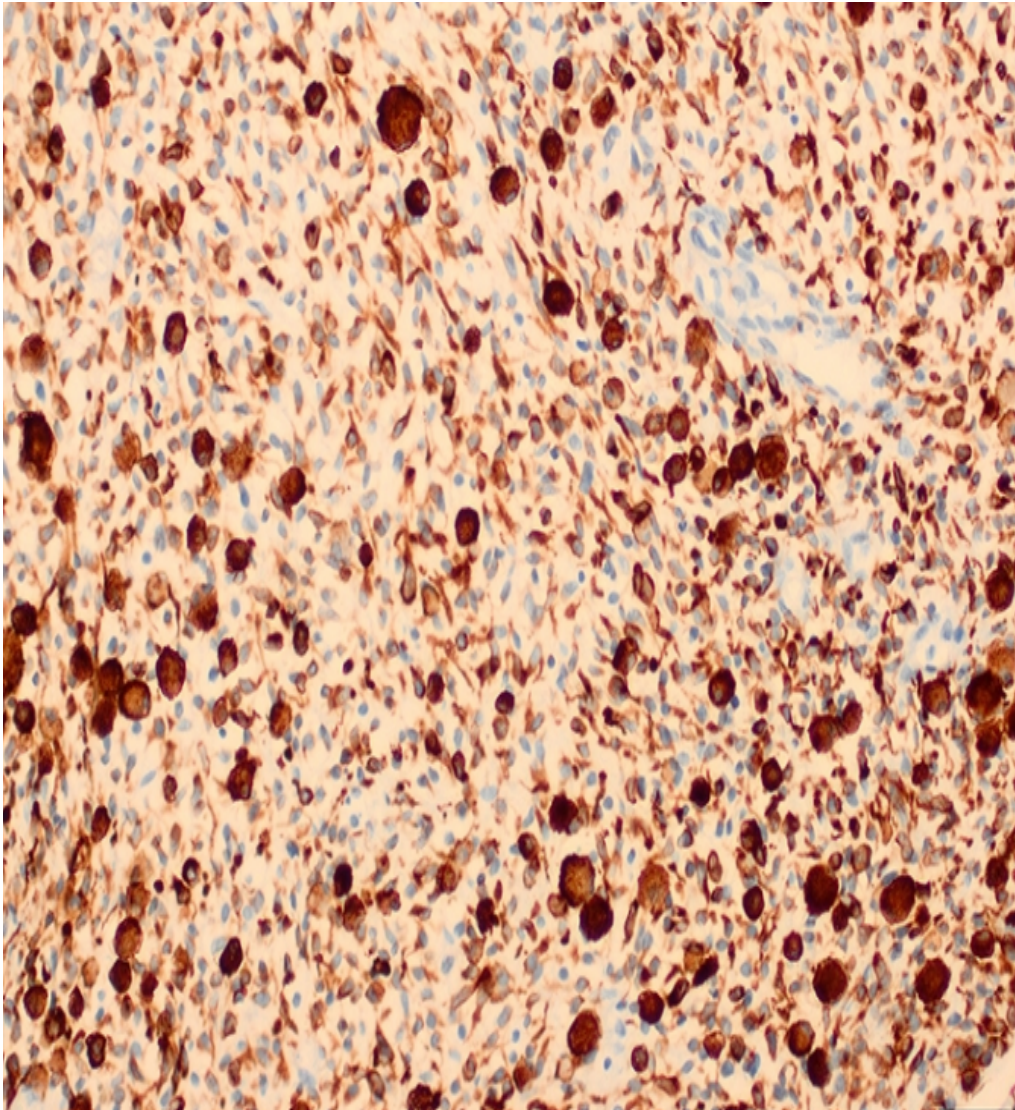
Infiltrative margin



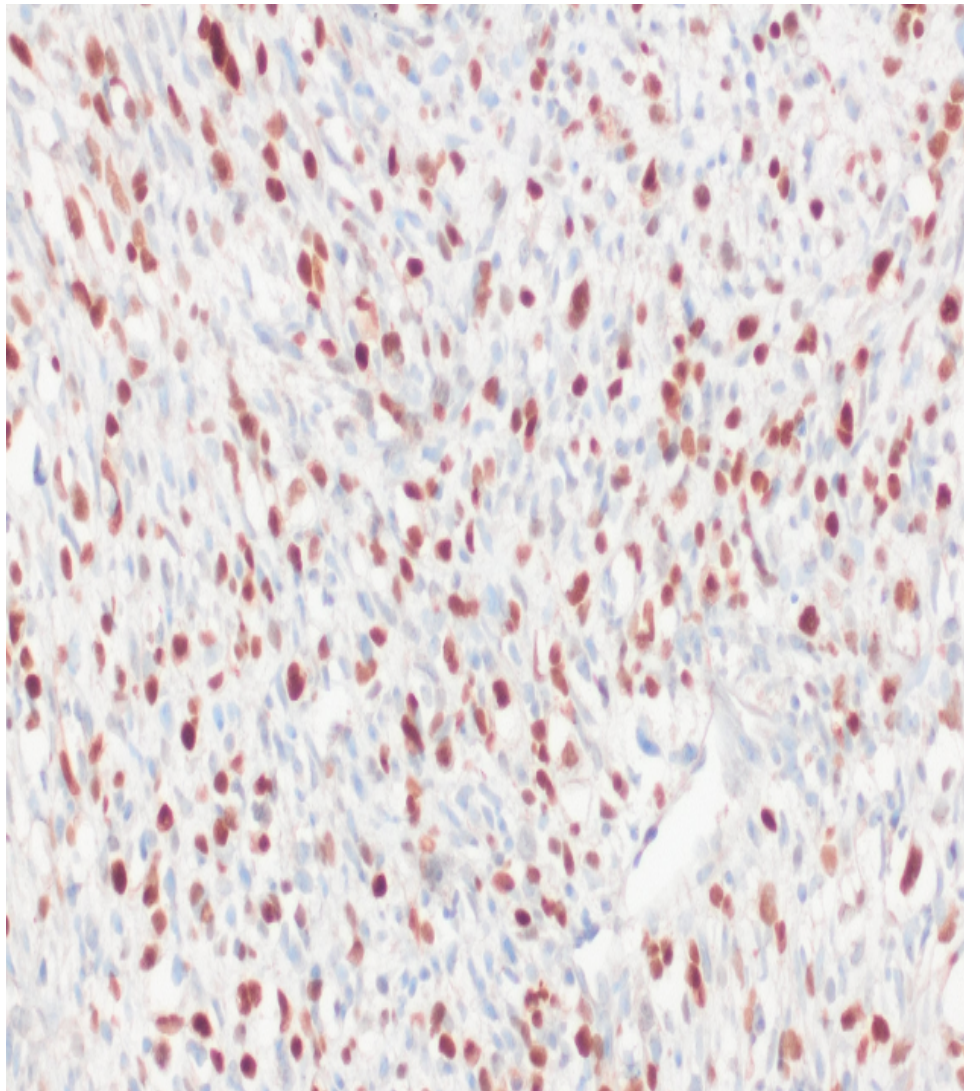
**Beta_lactenin
stain for deep
fibromatosis**



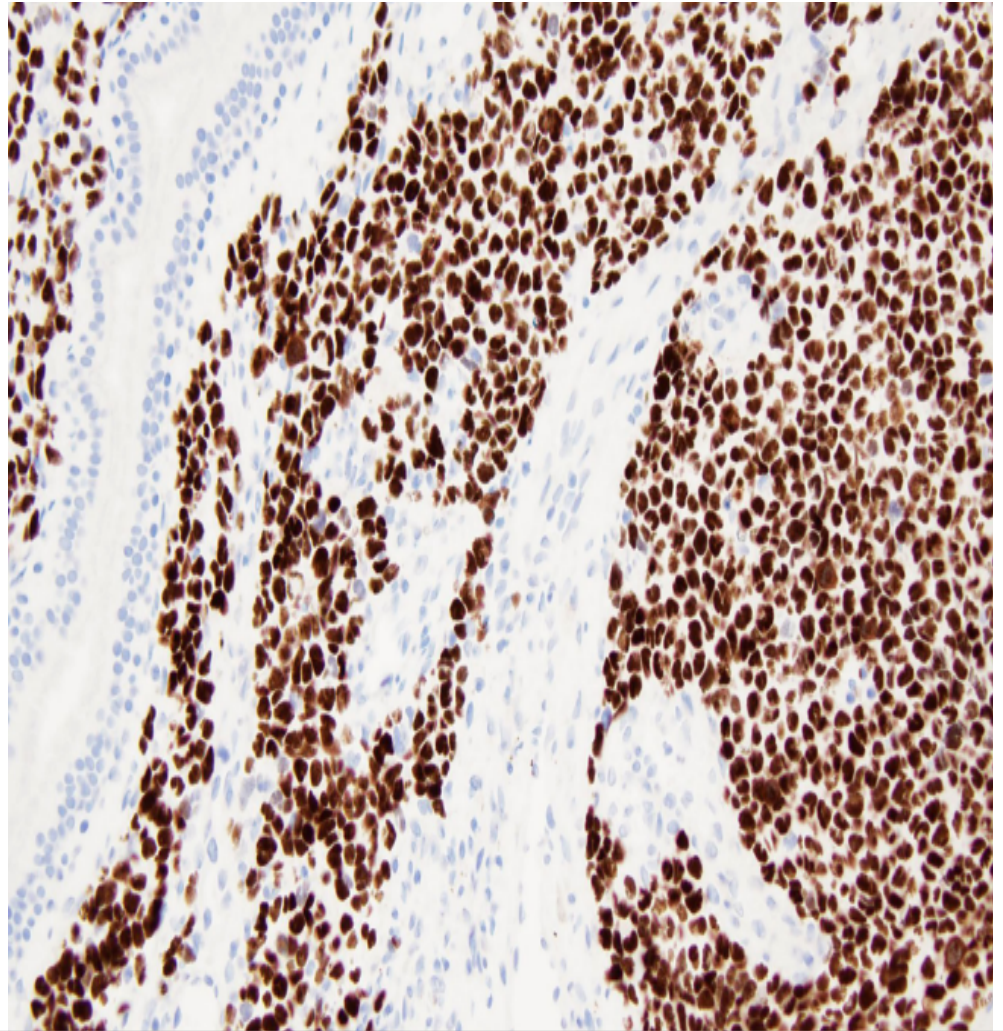
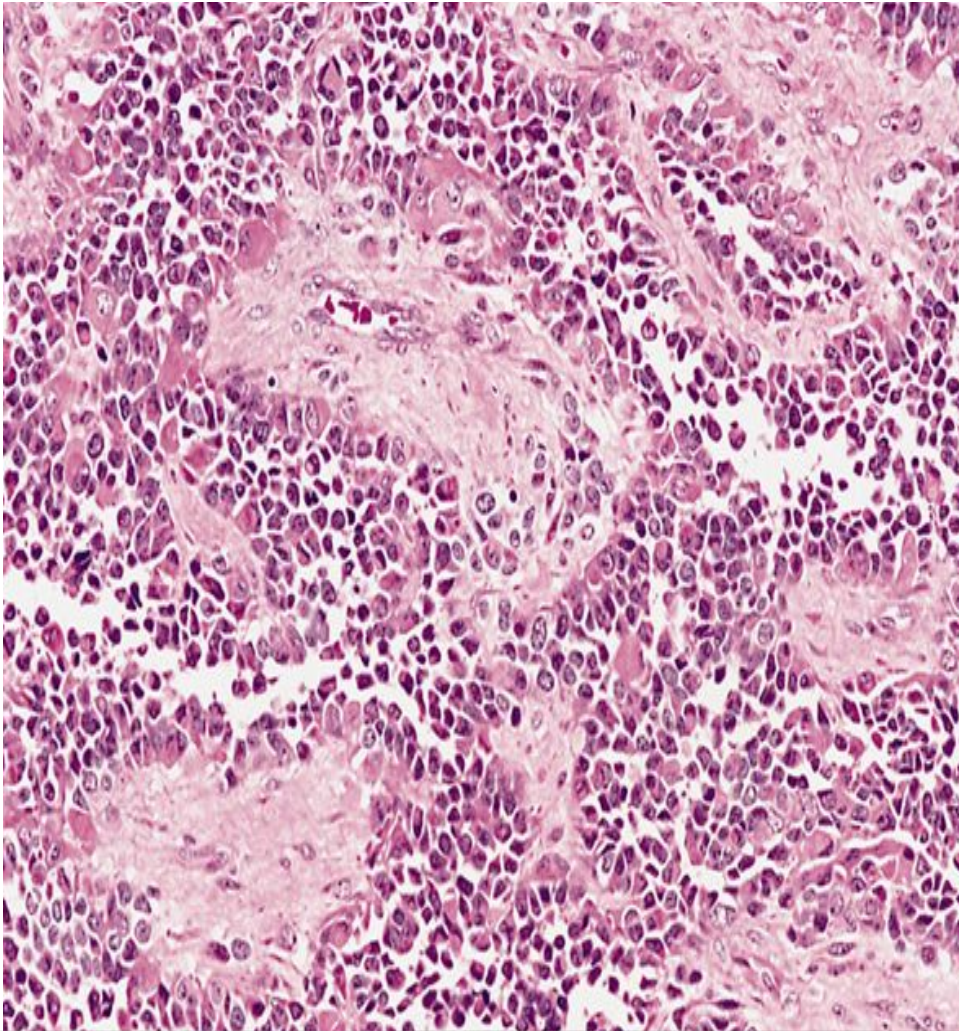
Sarcoma botryoides which is a variant of embryonal rhabdomyosarcoma



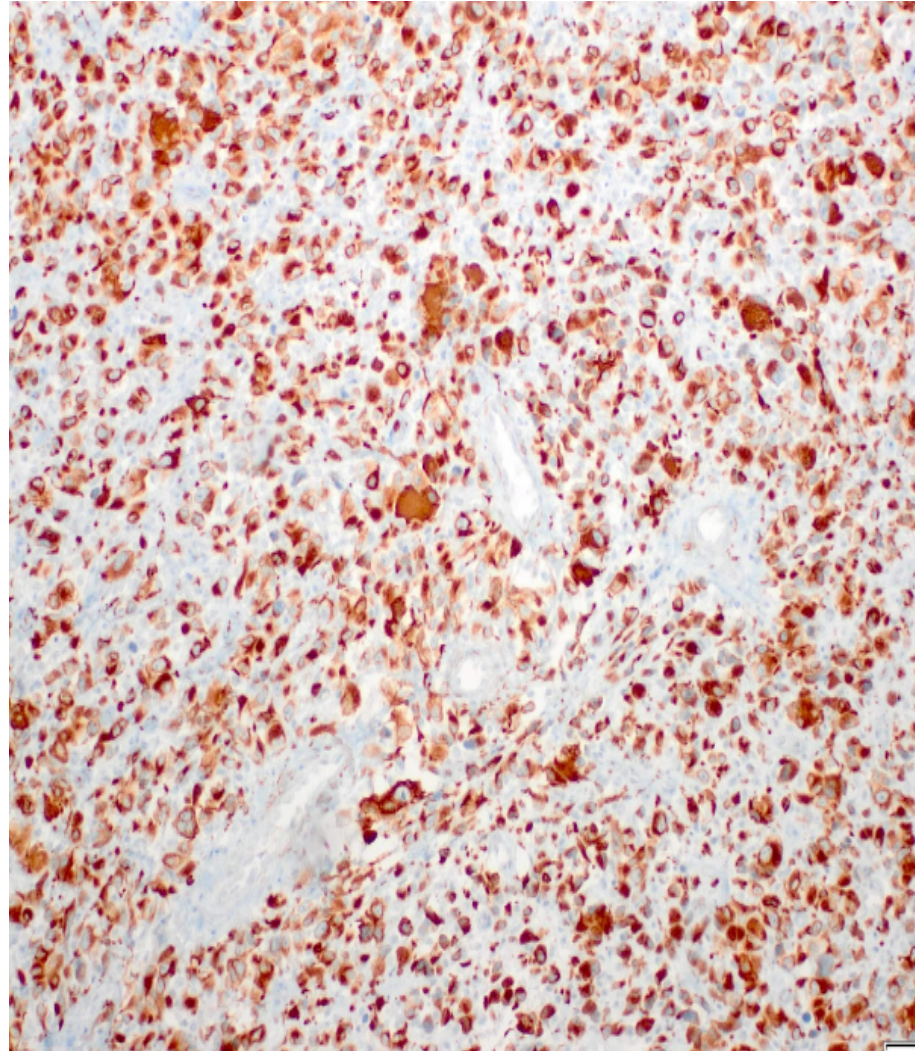
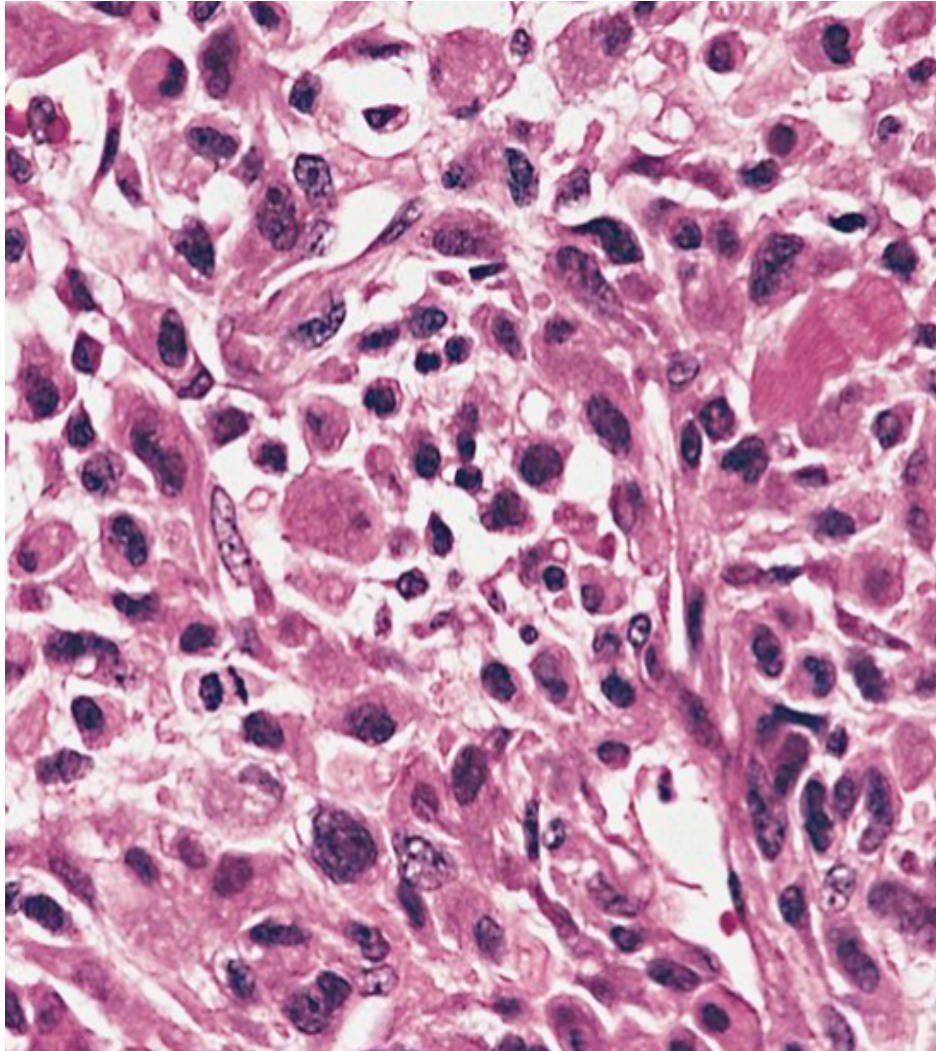
Desmin immunohistochemistry



Myogenin immunohistochemistry

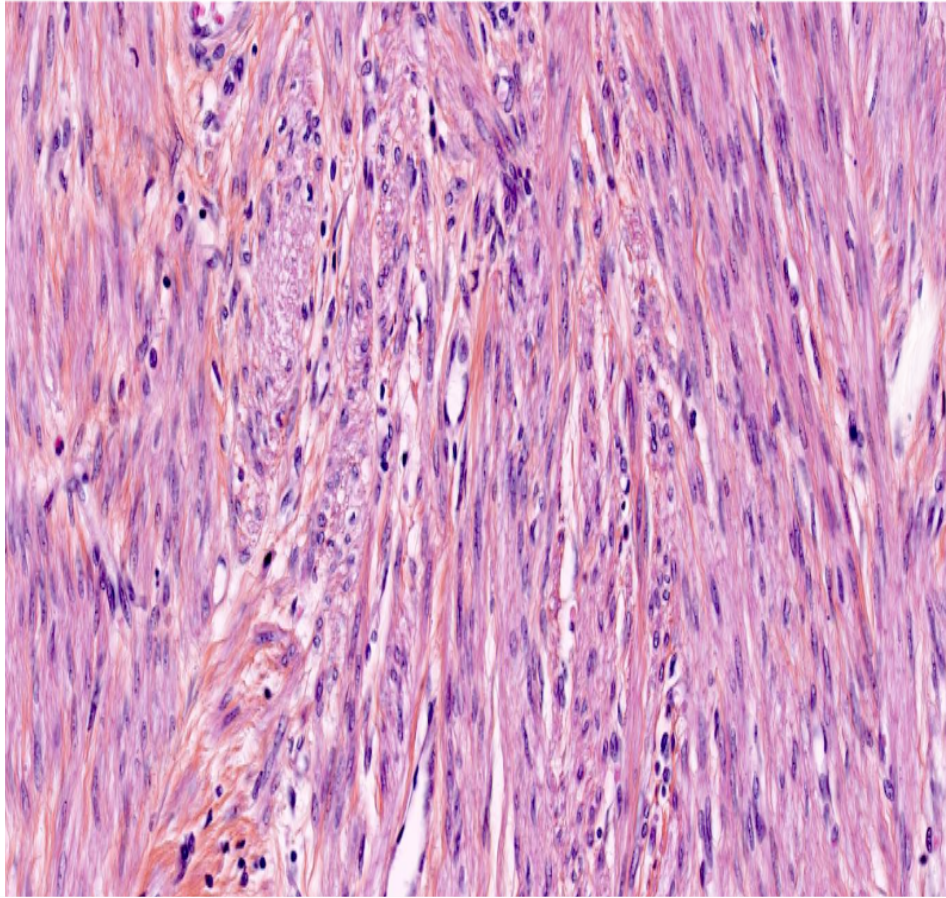


Alveolar rhabdomyosaroma → look like pulmonary alveoli

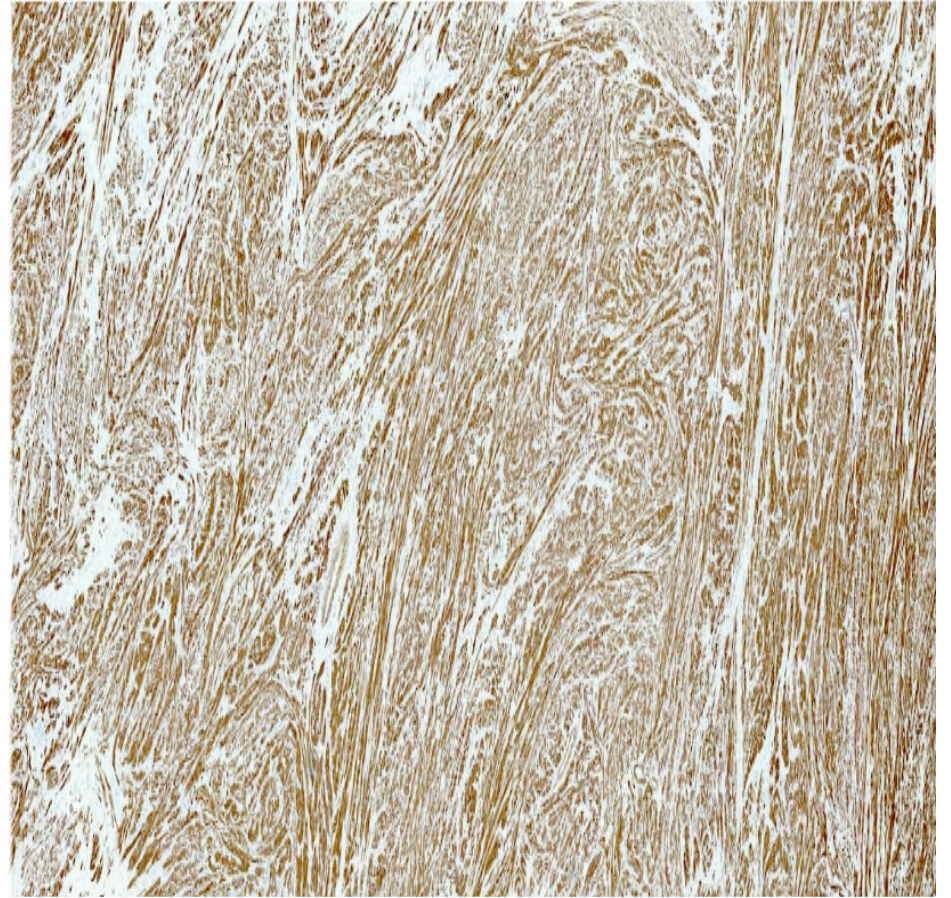


Pleomorphic rhabdomyosarcoma → Desmin immunohistochemistry

Leiomyoma → FH gene

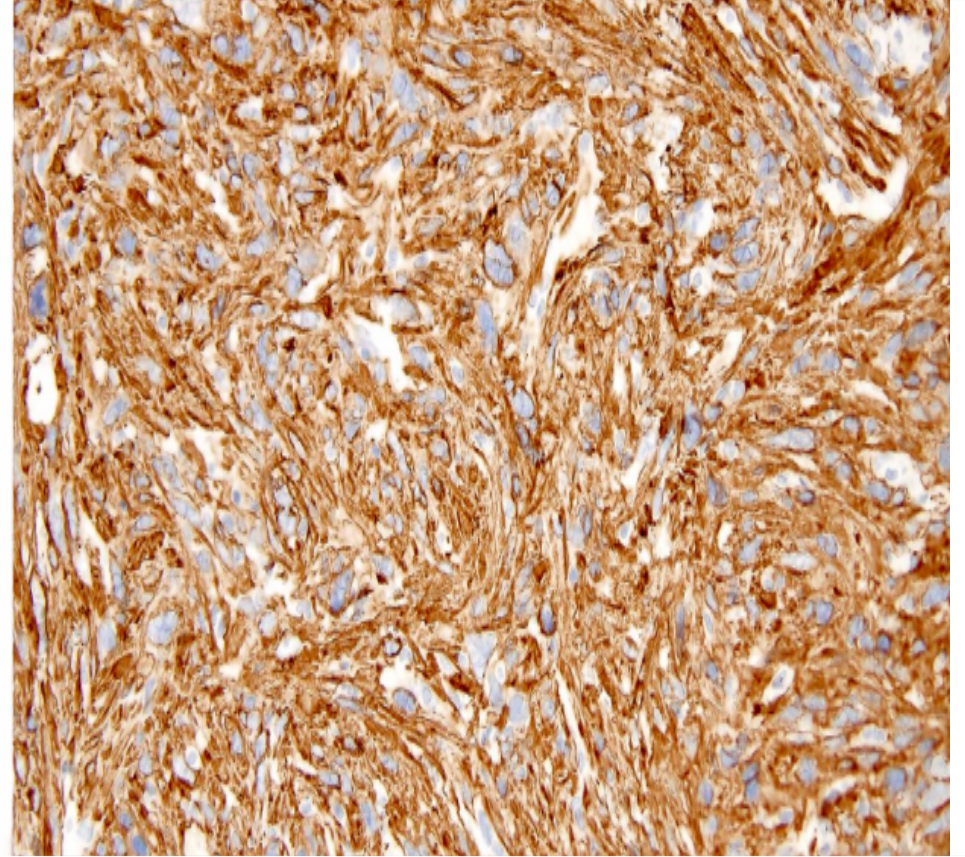
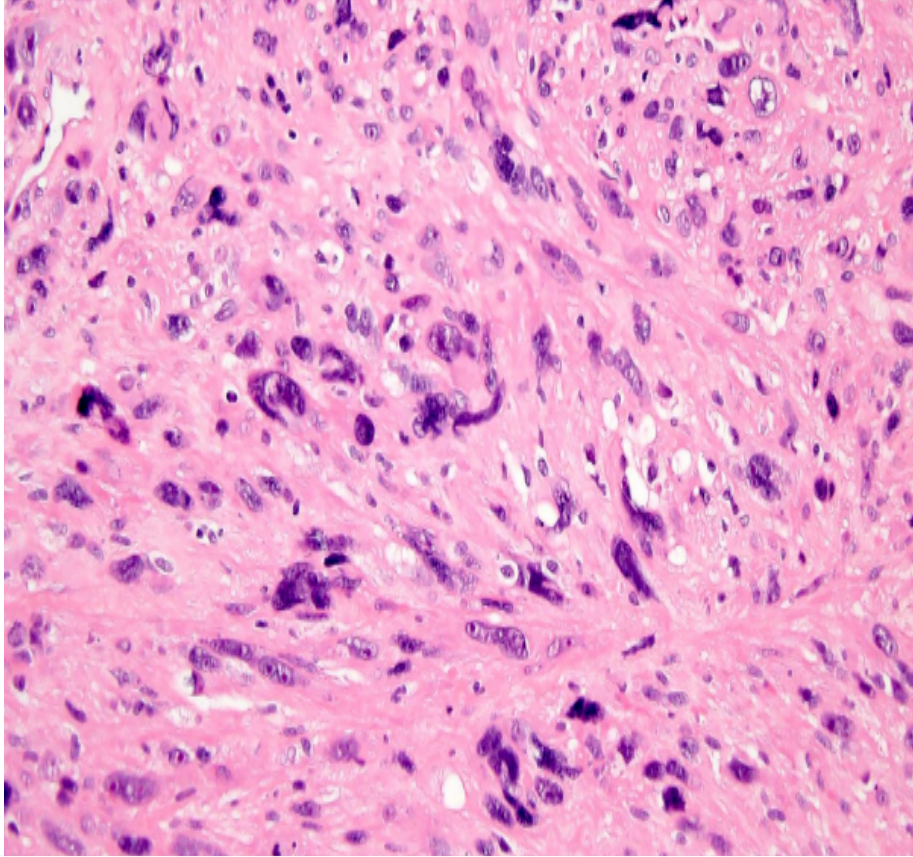


Fascicle of densely eosinophilic spindle cells

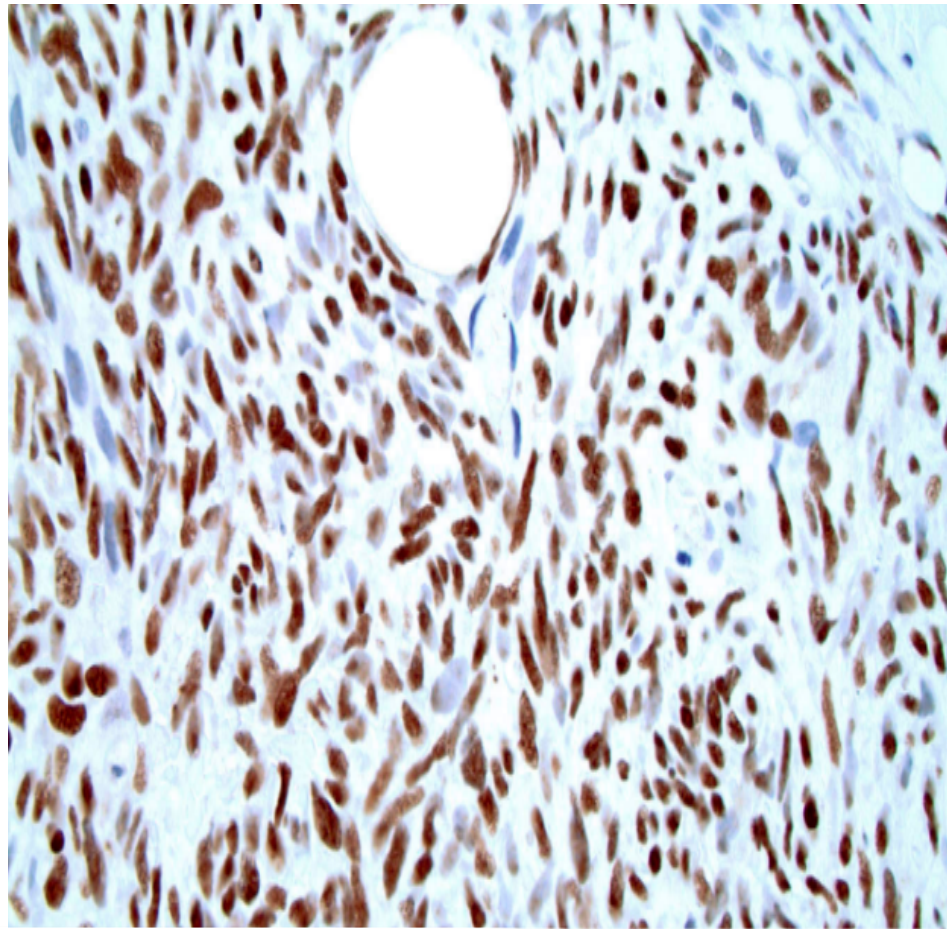
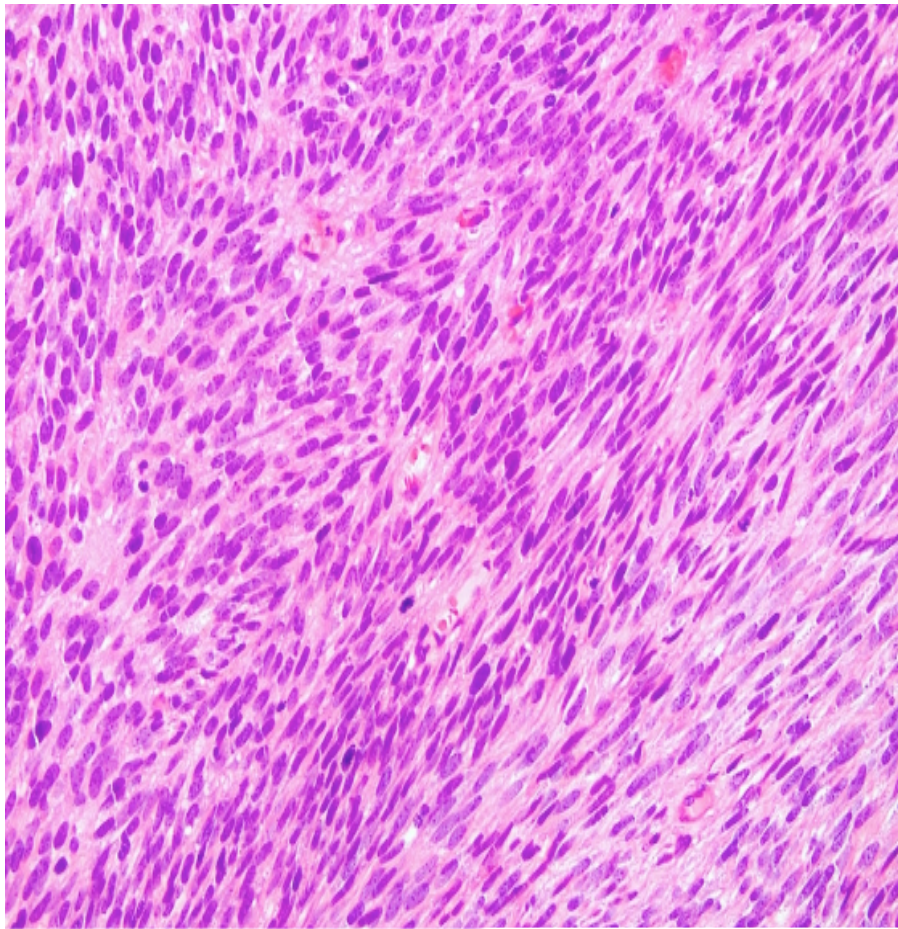


Desmin stain

Leiomyosarcoma

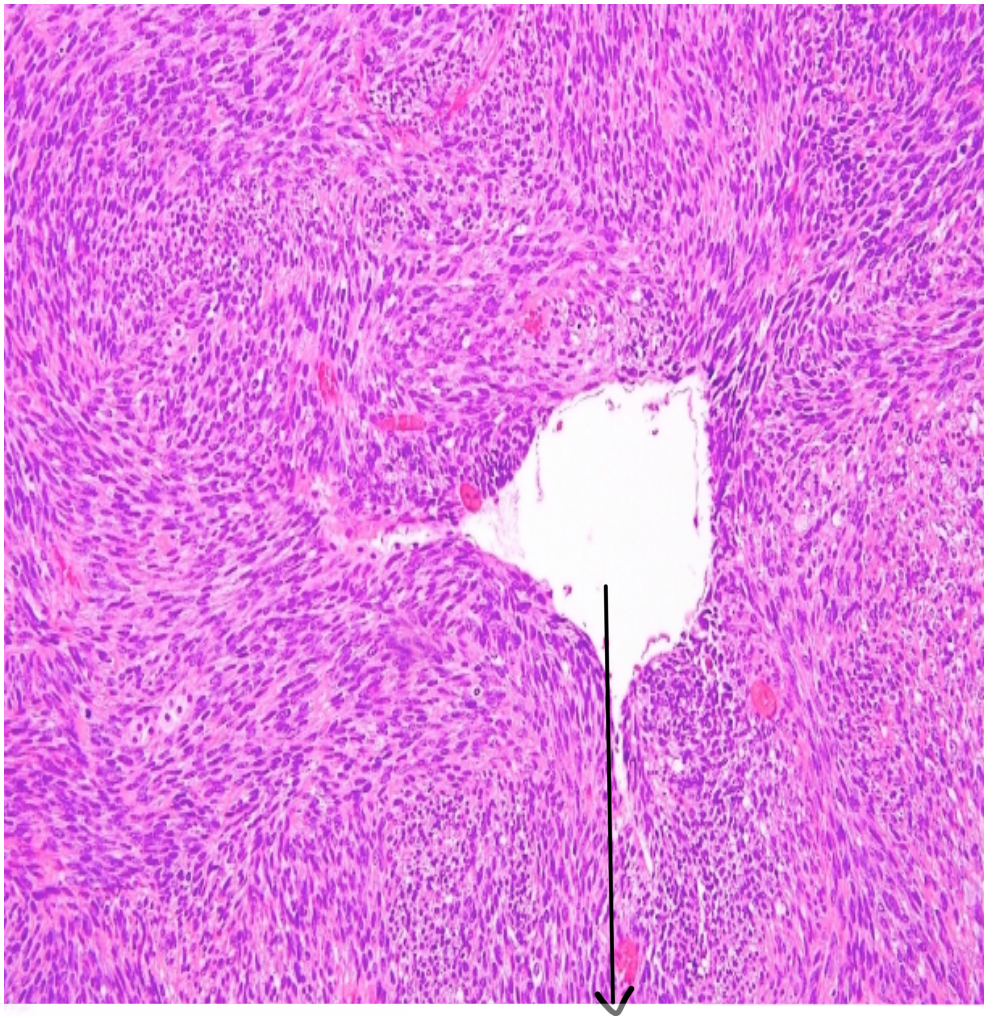


H_caldesmon immunohistochemistry

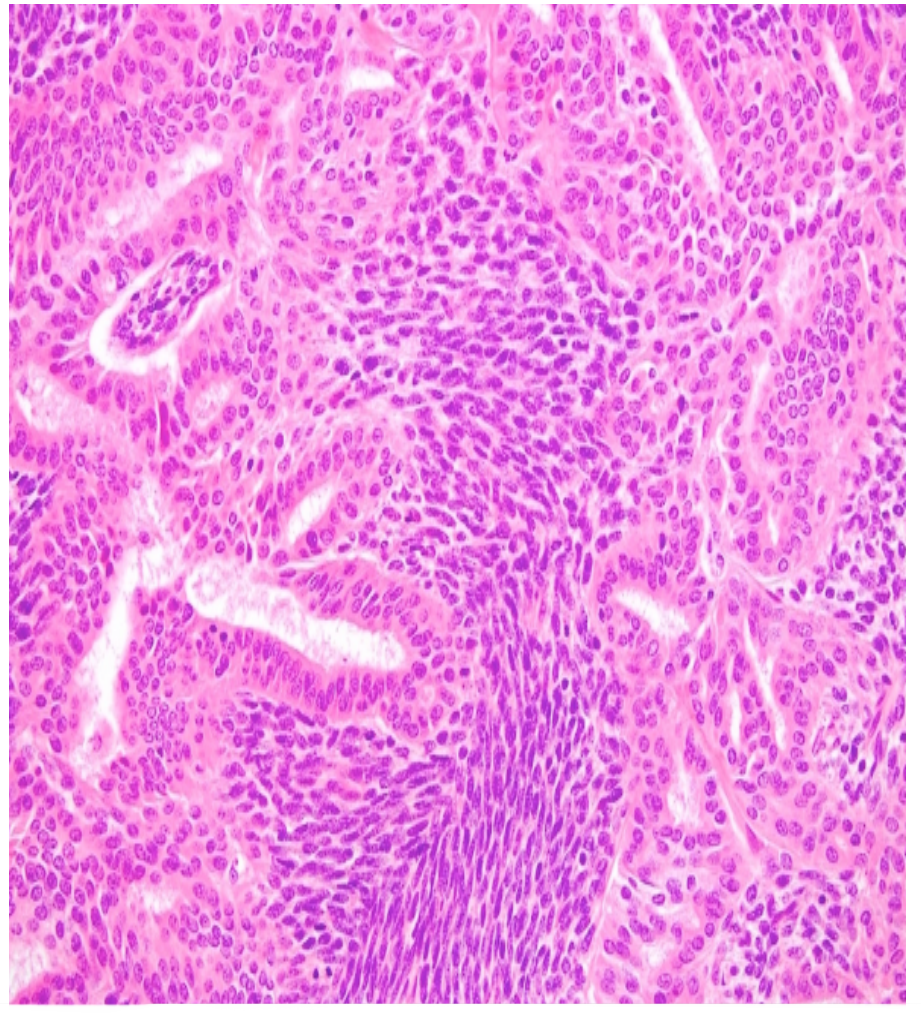


Tumors of uncertain origin

Monophasic synovial sarcoma TLE1 stain



Monophasic with hemangiopericytic vessel



Biphasic synovial sarcoma: Gland like structure