

UROGENITAL SYSTEM

PELVIC ARTERIES

Dr. Aiman Qais Afar AL-Maathidy

Surgical Anatomist

College of Medicine /University Of Mutah

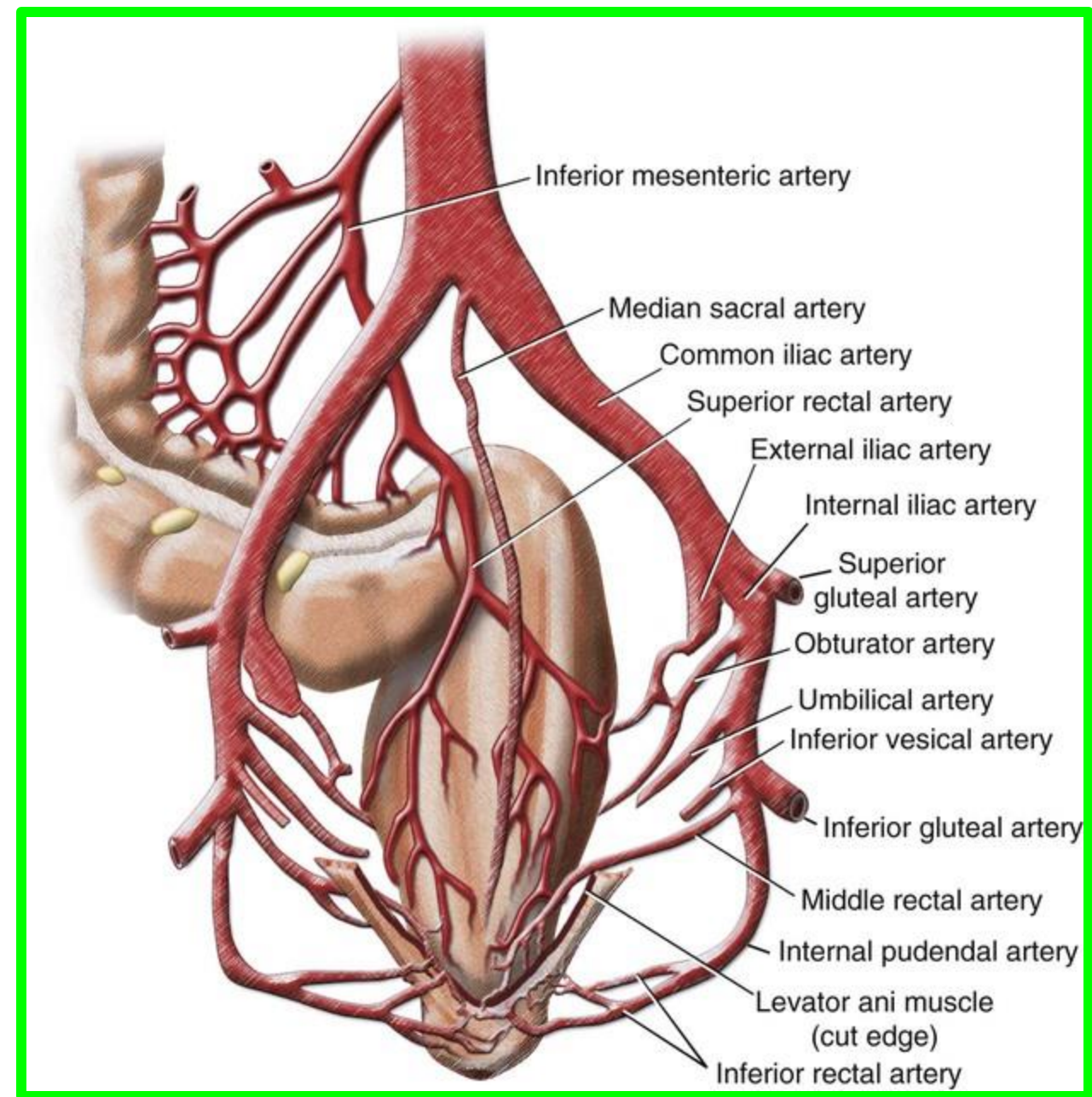
2023-2024

Tuesday 14 May 2024

PELVIC ARTERIES

Six main arteries enter the lesser pelvis of females:

- ✓ The paired **internal iliac**
 - ✓ The paired **Ovarian arteries**
 - ✓ The unpaired **median sacral**
 - ✓ The unpaired **superior rectal arteries.**
- ❖ Since the **testicular arteries** do not enter **the lesser pelvis**, only **four main arteries** enter the lesser pelvis of males.

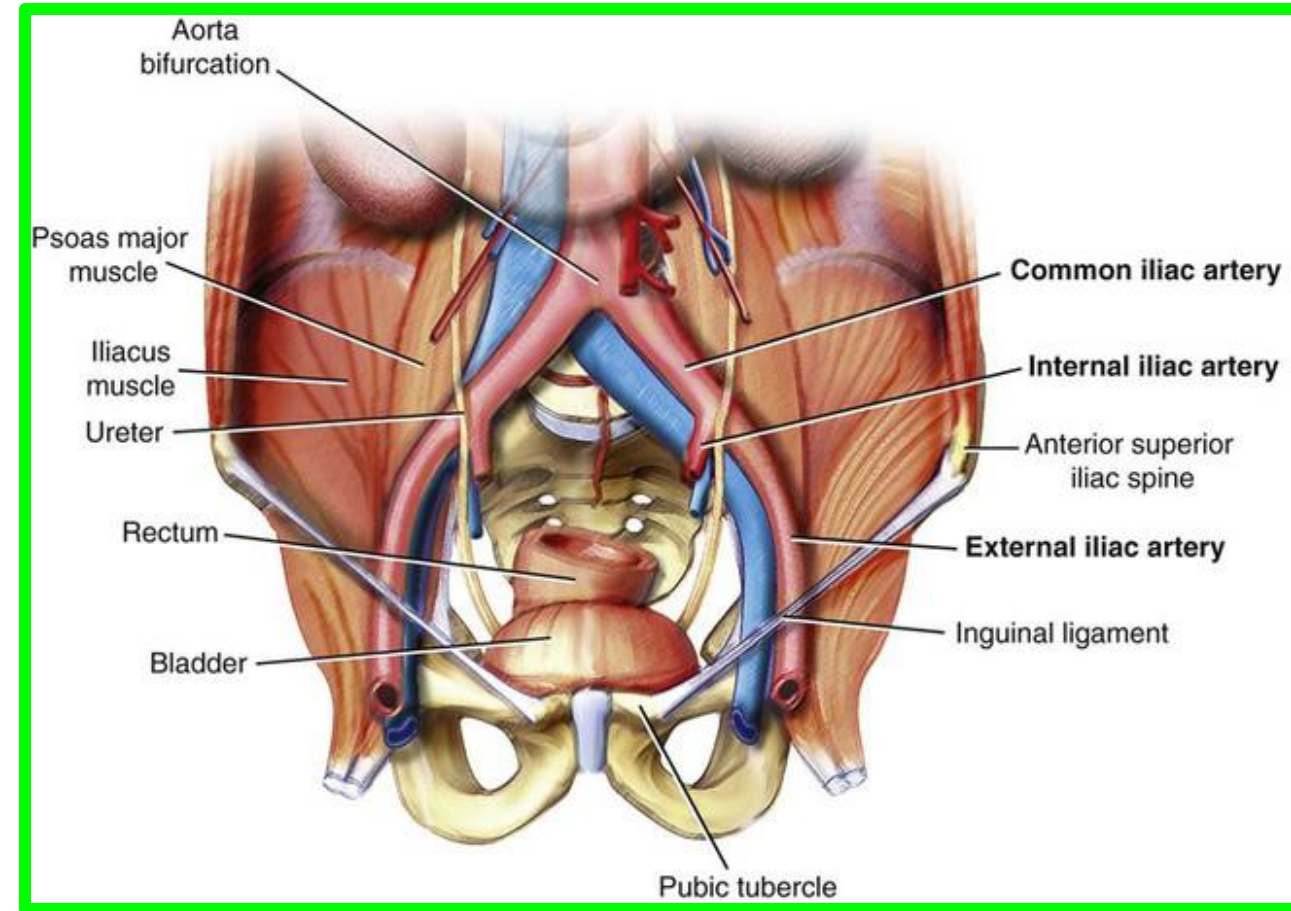


INTERNAL ILIAC ARTERY

Dr. Aiman Al Maathidy
Tuesday 14 May 2024

3

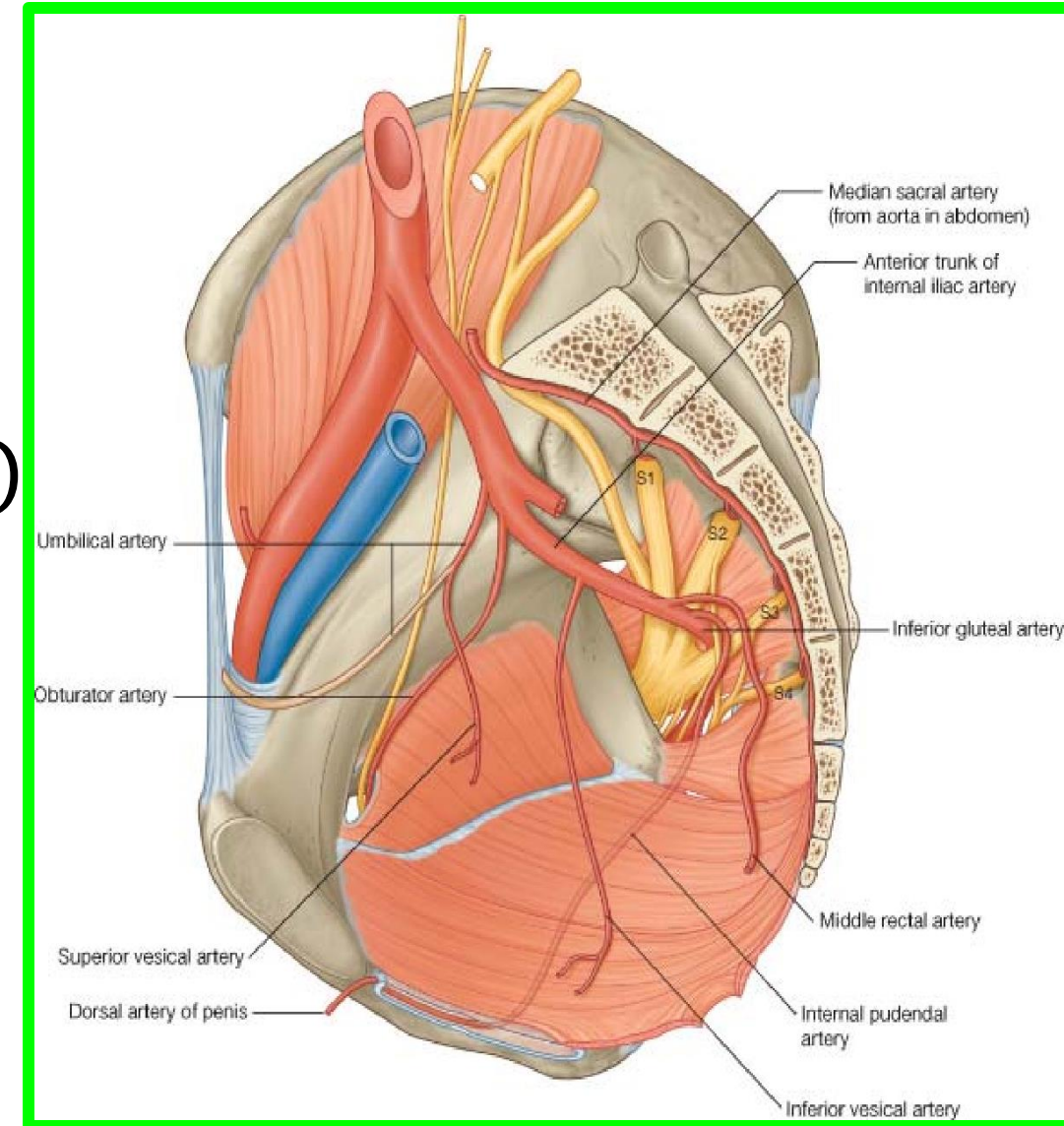
- ❑ Is the principal artery of the pelvis
- ❑ Approximately **4 cm** long
- ❑ Begins as the **common iliac artery** and bifurcates into **the internal** and **external** iliac arteries
- ❑ Begins at the level of the IV disc between the **L5** and **S1 vertebrae**



- ❑ The internal iliac artery is separated from **the sacroiliac joint** by the **internal iliac vein** and **the lumbosacral trunk**.

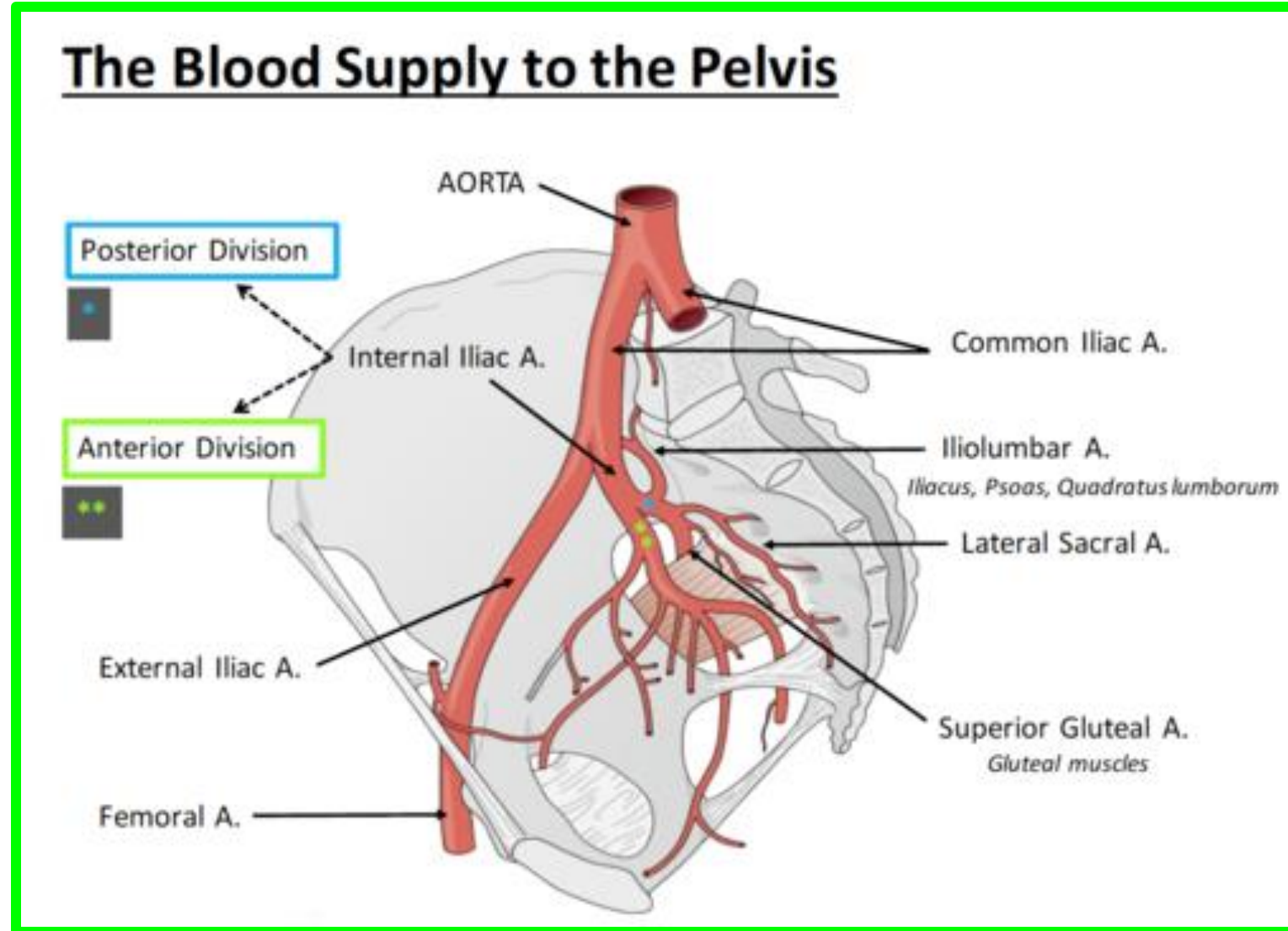
BRANCHES OF ANTERIOR DIVISION OF INTERNAL ILIAC ARTERY.

- ❖ Umbilical
- ❖ Obturator
- ❖ Middle rectal
- ❖ Superior vesical
- ❖ Uterine (♀)
- ❖ Inferior vesical (often vaginal in females)
- ❖ Inferior gluteal arteries
- ❖ Internal Pudendal



BRANCHES OF POSTERIOR DIVISION OF INTERNAL ILIAC ARTERY.

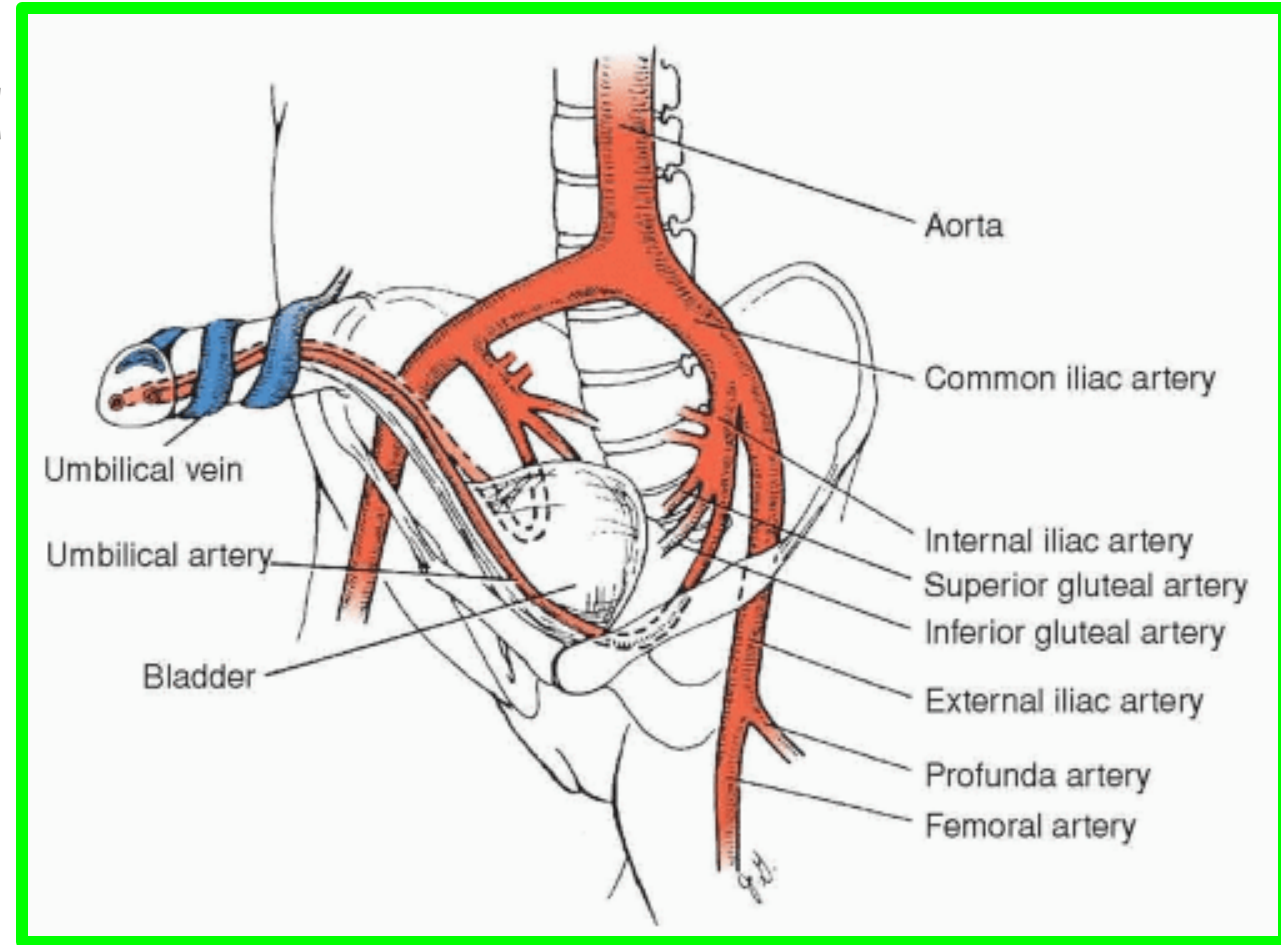
- ❖ The iliolumbar artery
- ❖ The lateral sacral artery
- ❖ The superior gluteal artery



ANTERIOR DIVISION OF INTERNAL ILIAC ARTERY.

1. Umbilical artery

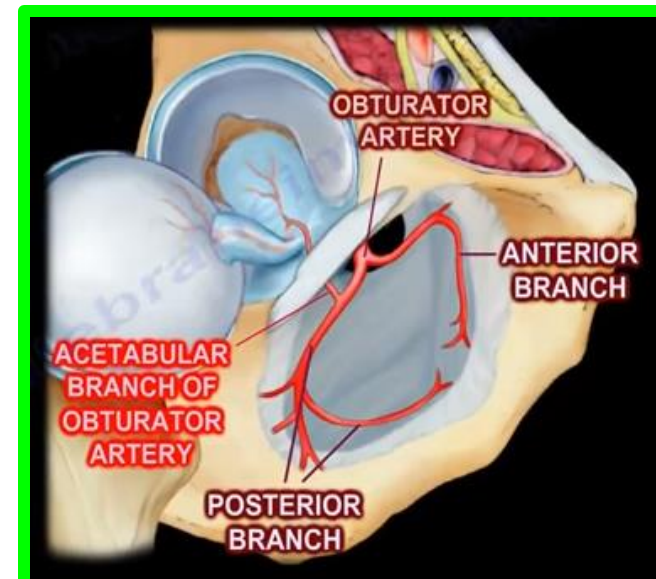
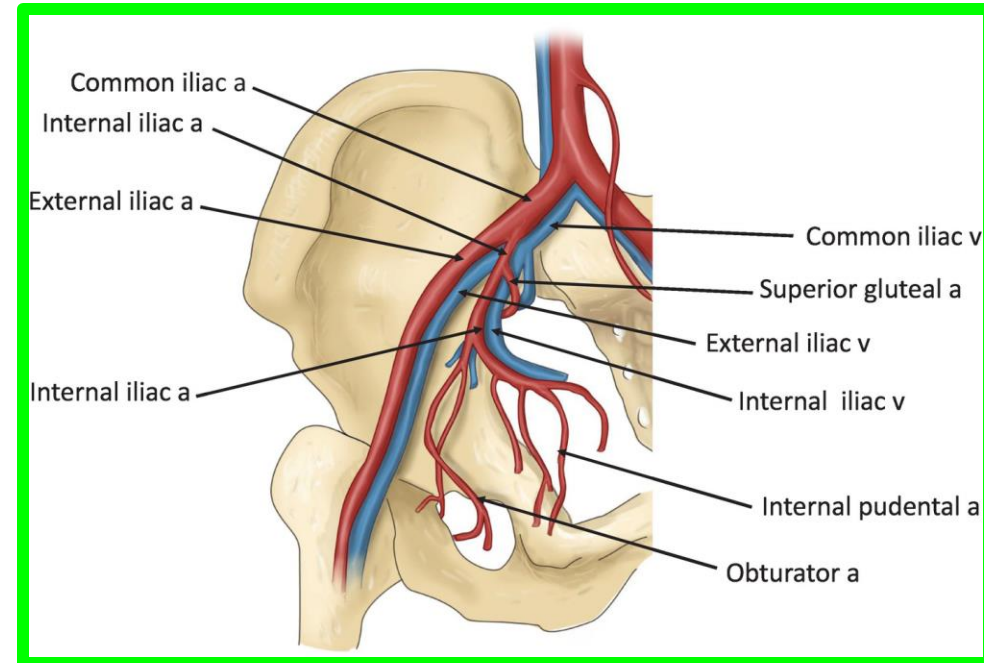
- ✓ **Origin:** Anterior division of internal iliac artery
- ✓ **Course:** Short pelvic course; obliterates after origin of **superior vesical artery**
- ✓ **Distribution:** Via **superior vesical artery**



ANTERIOR DIVISION OF INTERNAL ILIAC ARTERY.

2. Obturator artery

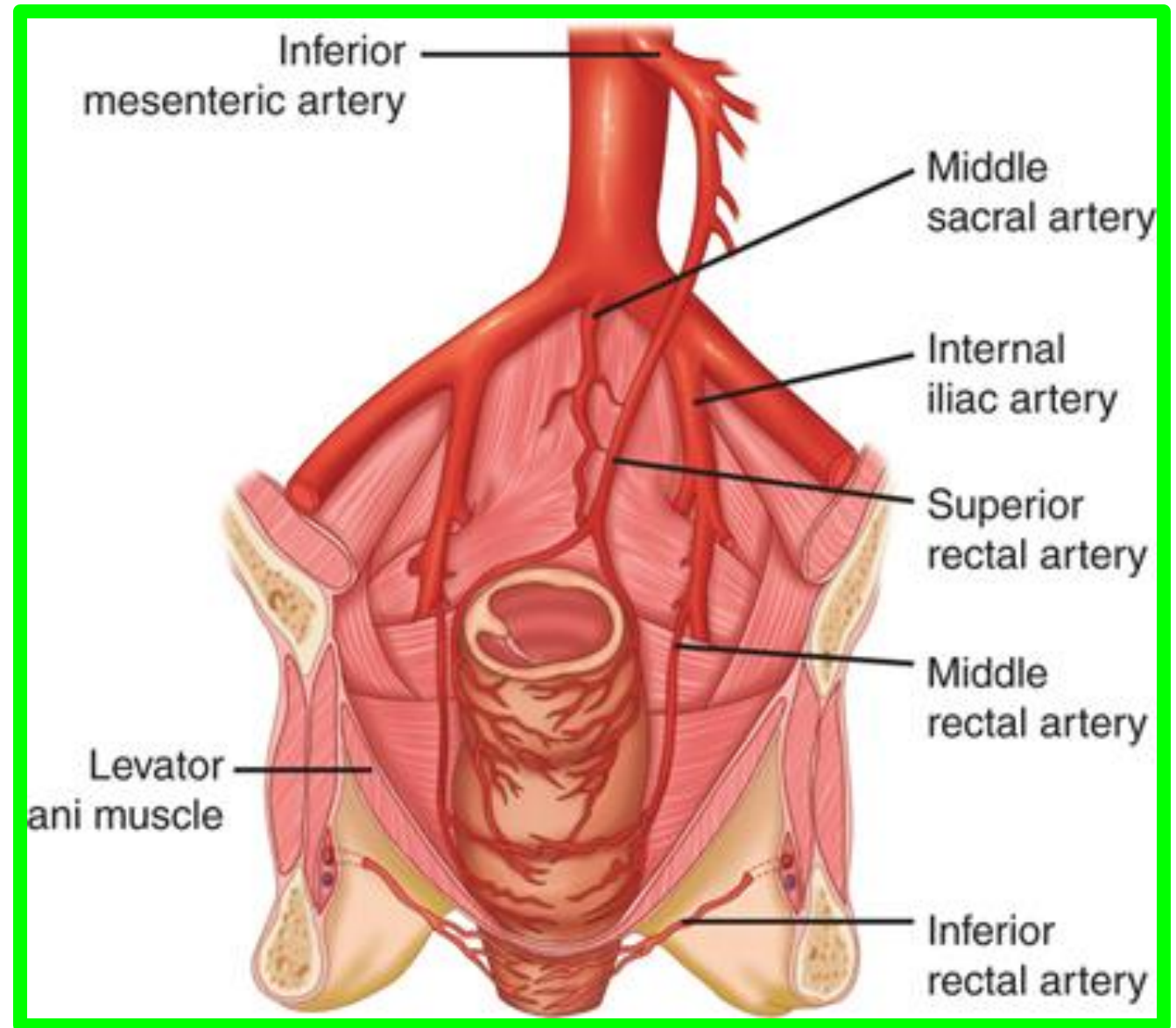
- ✓ **Origin:** Anterior division of internal iliac artery
- ✓ **Course:** Runs antero-inferiorly on lateral pelvic wall
- ✓ **Distribution:** Pelvic muscles, nutrient artery to ilium, and head of femur and muscles of medial compartment of thigh



ANTERIOR DIVISION OF INTERNAL ILIAC ARTERY.

3. Middle Rectal artery

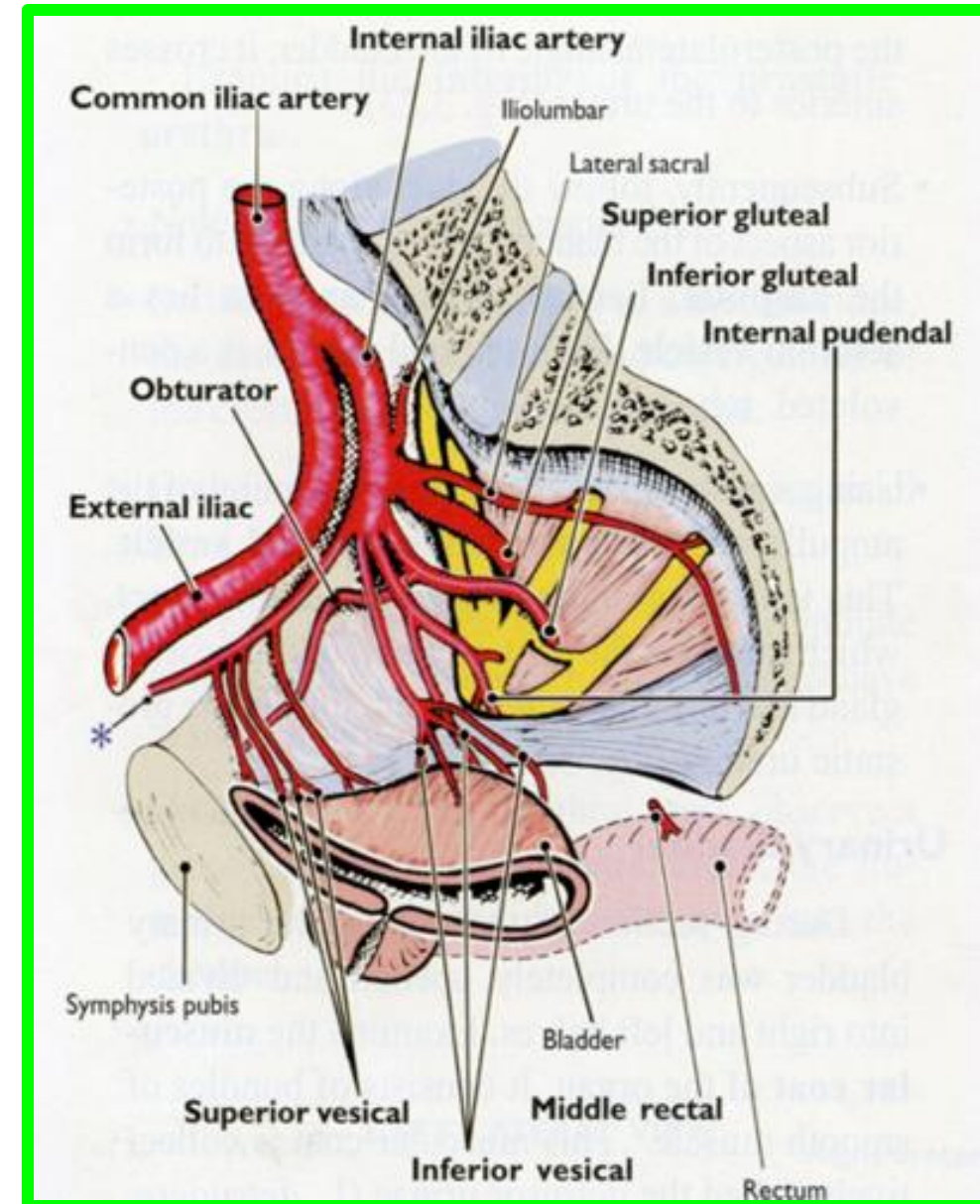
- ✓ **Origin:** Anterior division of internal iliac artery
- ✓ **Course:** Descends in pelvis to rectum
- ✓ **Distribution:** Inferior part of rectum, seminal glands, prostate (vagina)



ANTERIOR DIVISION OF INTERNAL ILIAC ARTERY.

4. Superior vesical artery

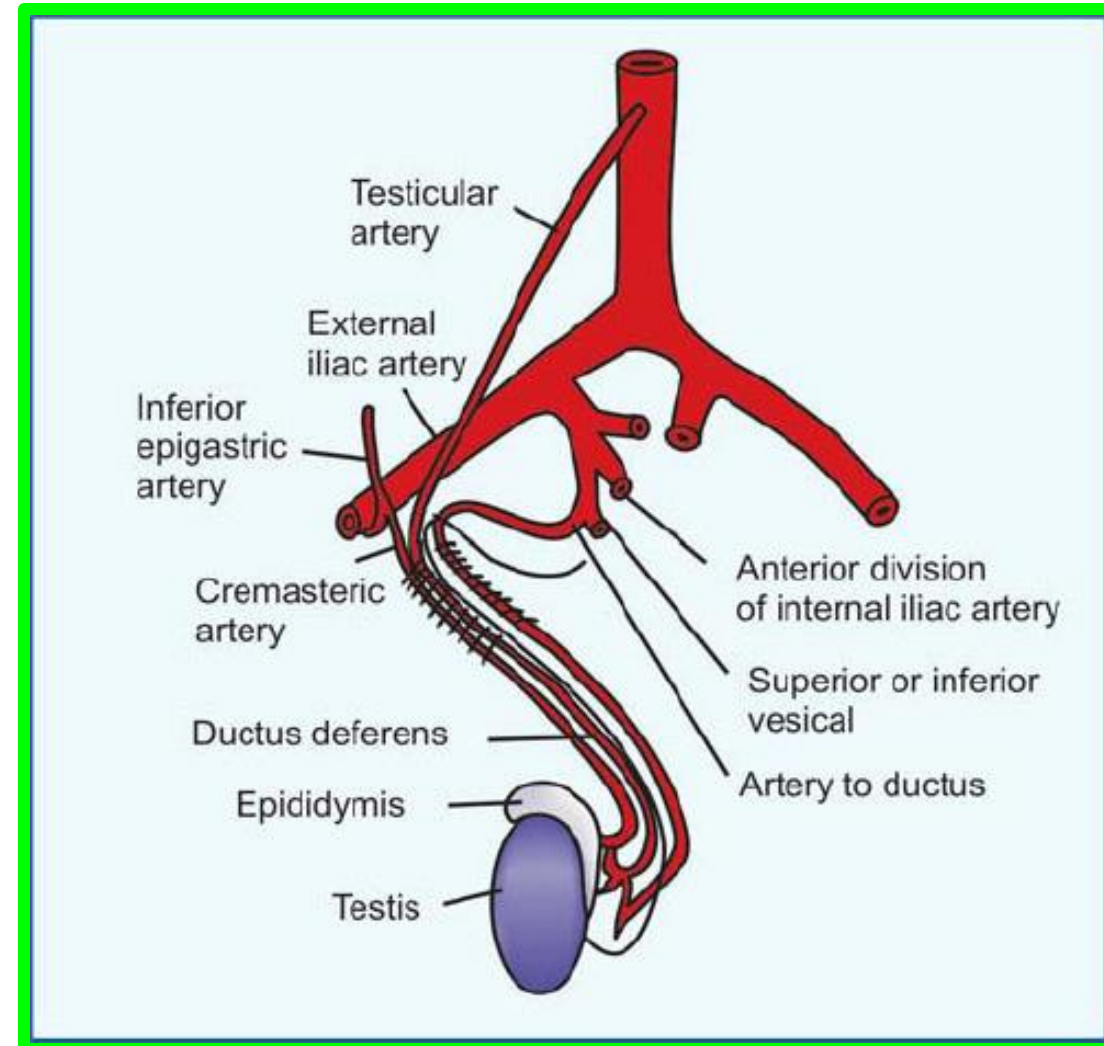
- ✓ **Origin:** Patent part of umbilical artery
- ✓ **Course:** Usually multiple; Passes to superior aspect of urinary bladder
- ✓ **Distribution:** Superior aspect of urinary bladder; in some males, ductus deferens (via artery to ductus deferens)



ANTERIOR DIVISION OF INTERNAL ILIAC ARTERY.

4. 1. Artery to ductus deferens

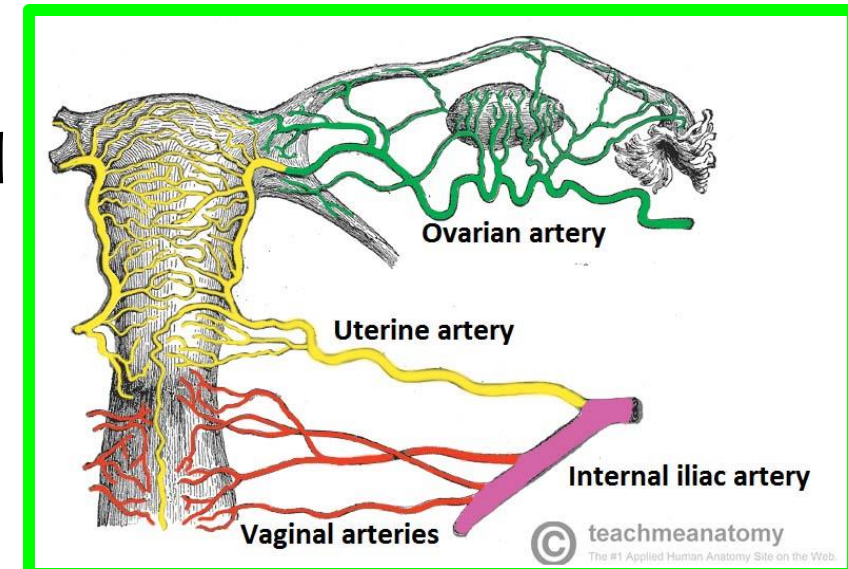
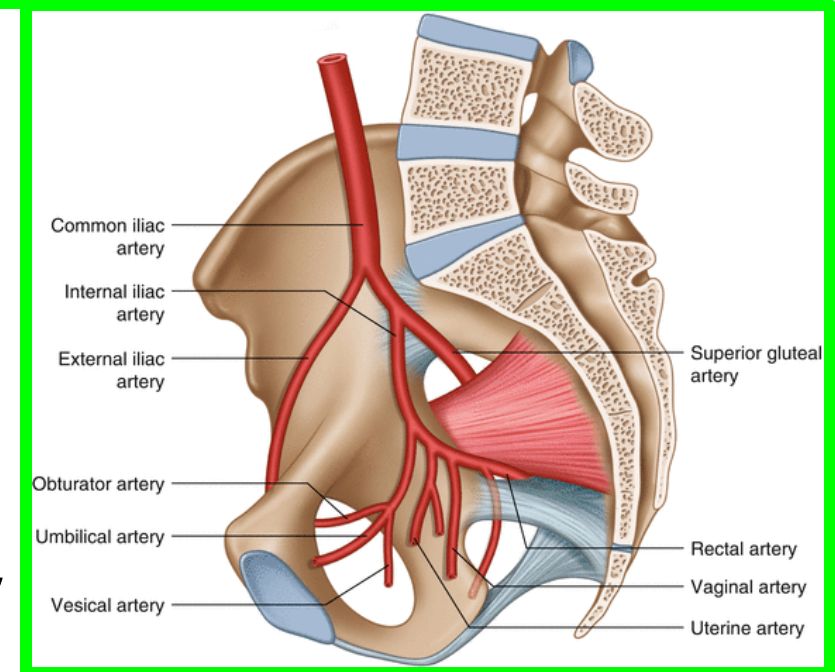
- ✓ **Origin:** Superior or inferior vesical artery
- ✓ **Course:** Runs subperitoneally to ductus deferens
- ✓ **Distribution:** Ductus deferens



ANTERIOR DIVISION OF INTERNAL ILIAC ARTERY.

5. Uterine artery

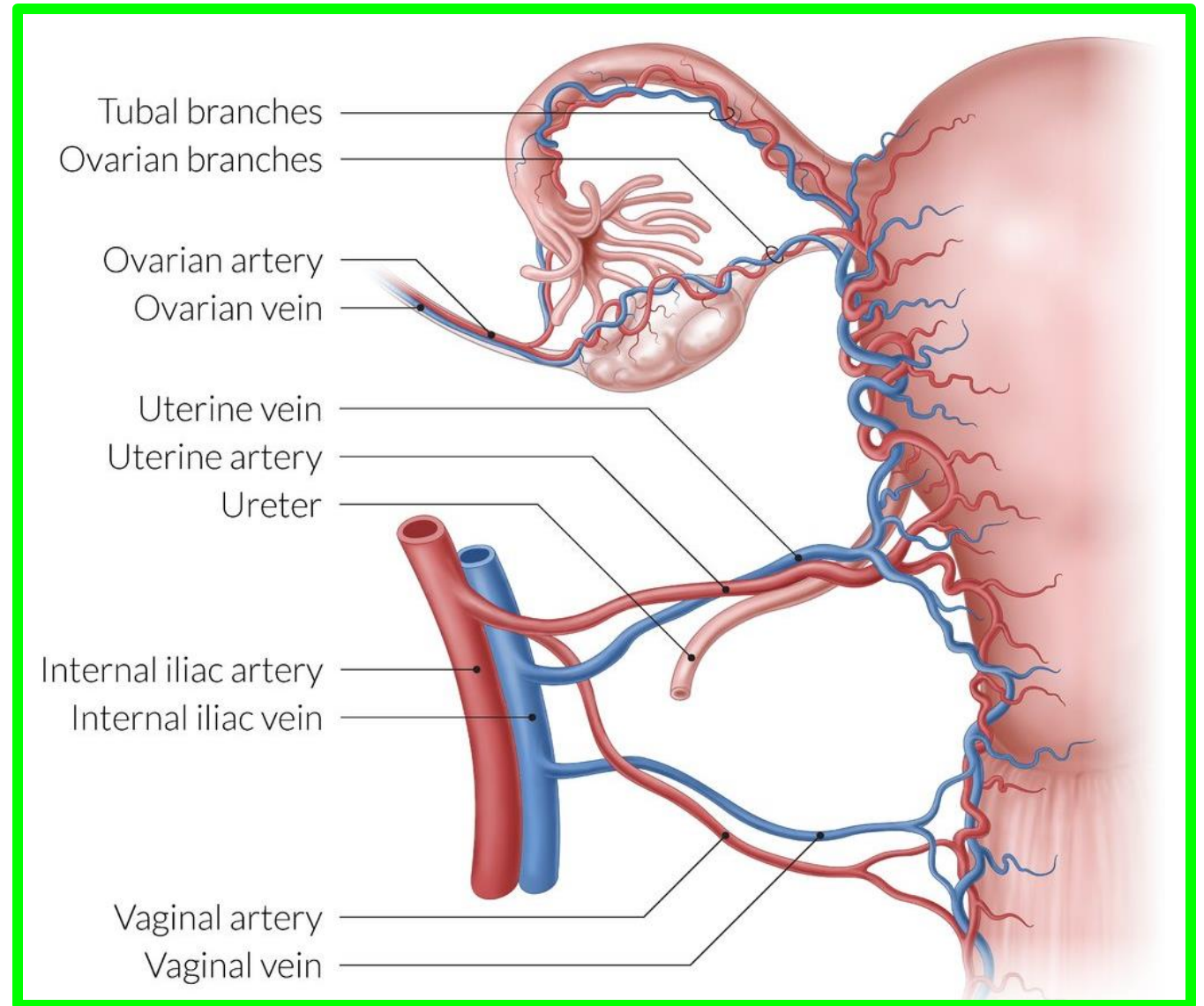
- ✓ **Origin:** Anterior division of internal iliac artery
- ✓ **Course:** Runs anteromedially in base of broad ligament/superior cardinal ligament, **gives rise to vaginal branch**, then crosses ureter superiorly to reach lateral aspect of uterine cervix
- ✓ **Distribution:** **Uterus**, ligaments of uterus, medial parts of **uterine tube** and **ovary**, and **superior vagina**



ANTERIOR DIVISION OF INTERNAL ILIAC ARTERY.

5. 1. Vaginal artery

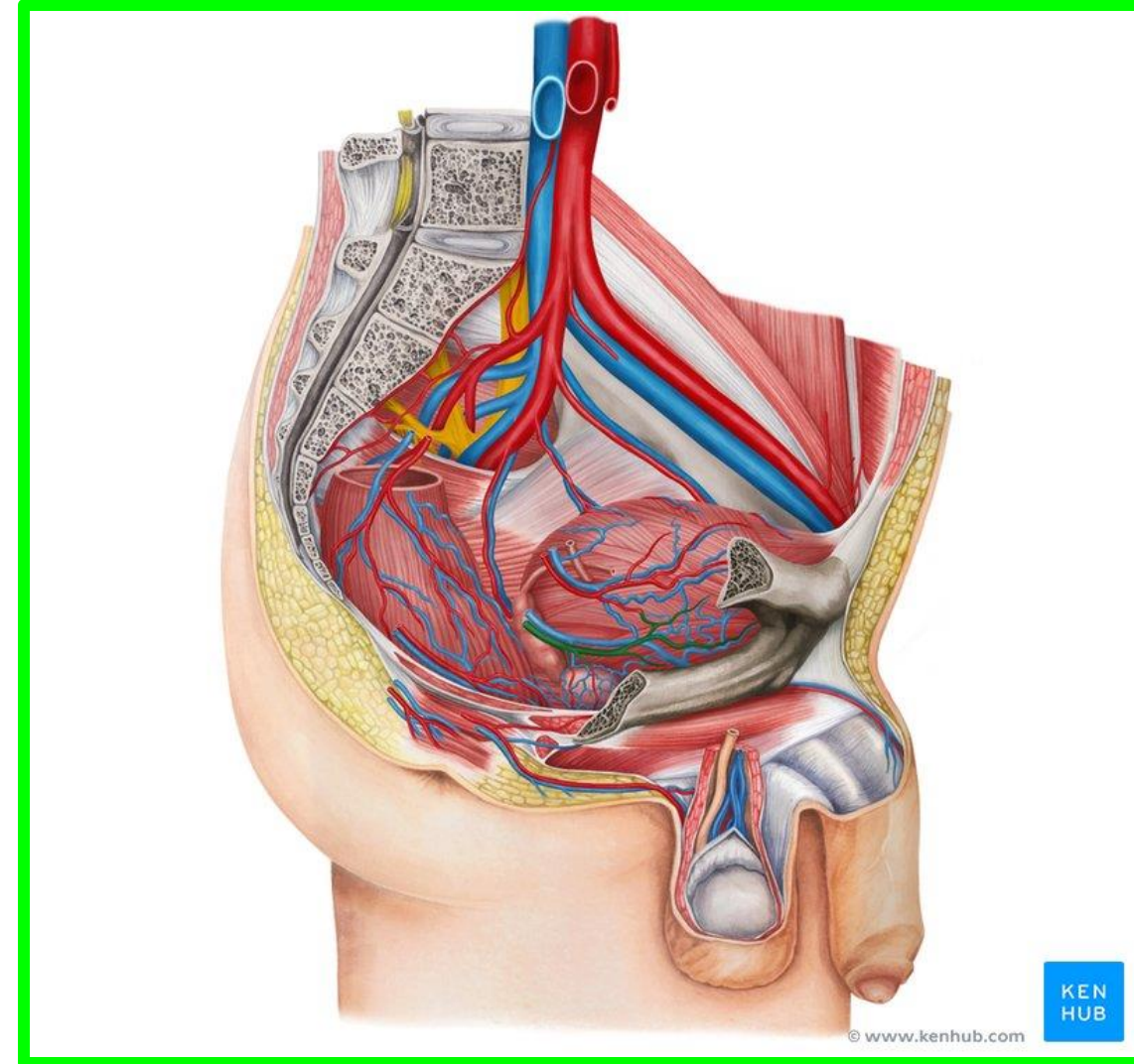
- ✓ **Origin:** Uterine artery
- ✓ **Course:** At junction of body and cervix of uterus, it descends to vagina
- ✓ **Distribution:**
 - ❖ **Vaginal branch:** lower vagina, vestibular bulb, and adjacent rectum;
 - ❖ **Inferior vesical branch:** fundus of urinary bladder



ANTERIOR DIVISION OF INTERNAL ILIAC ARTERY.

6. Inferior vesical artery

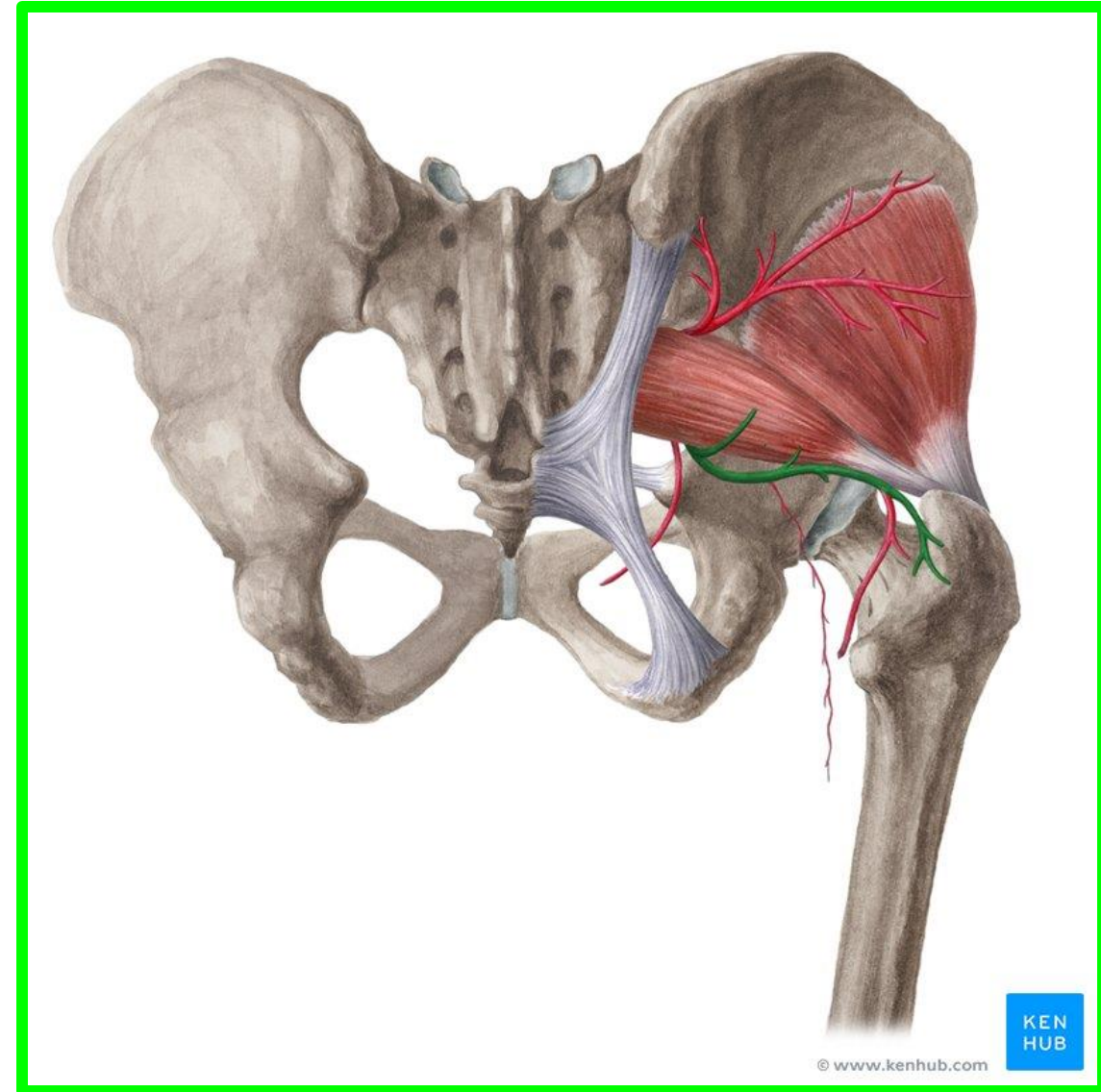
- ✓ **Origin:** Anterior division of internal iliac artery
- ✓ **Course:** Passes subperitoneally to inferior aspect of male urinary bladder
- ✓ **Distribution:** Urinary bladder and pelvic part of ureter, seminal gland, and prostate in males



ANTERIOR DIVISION OF INTERNAL ILIAC ARTERY.

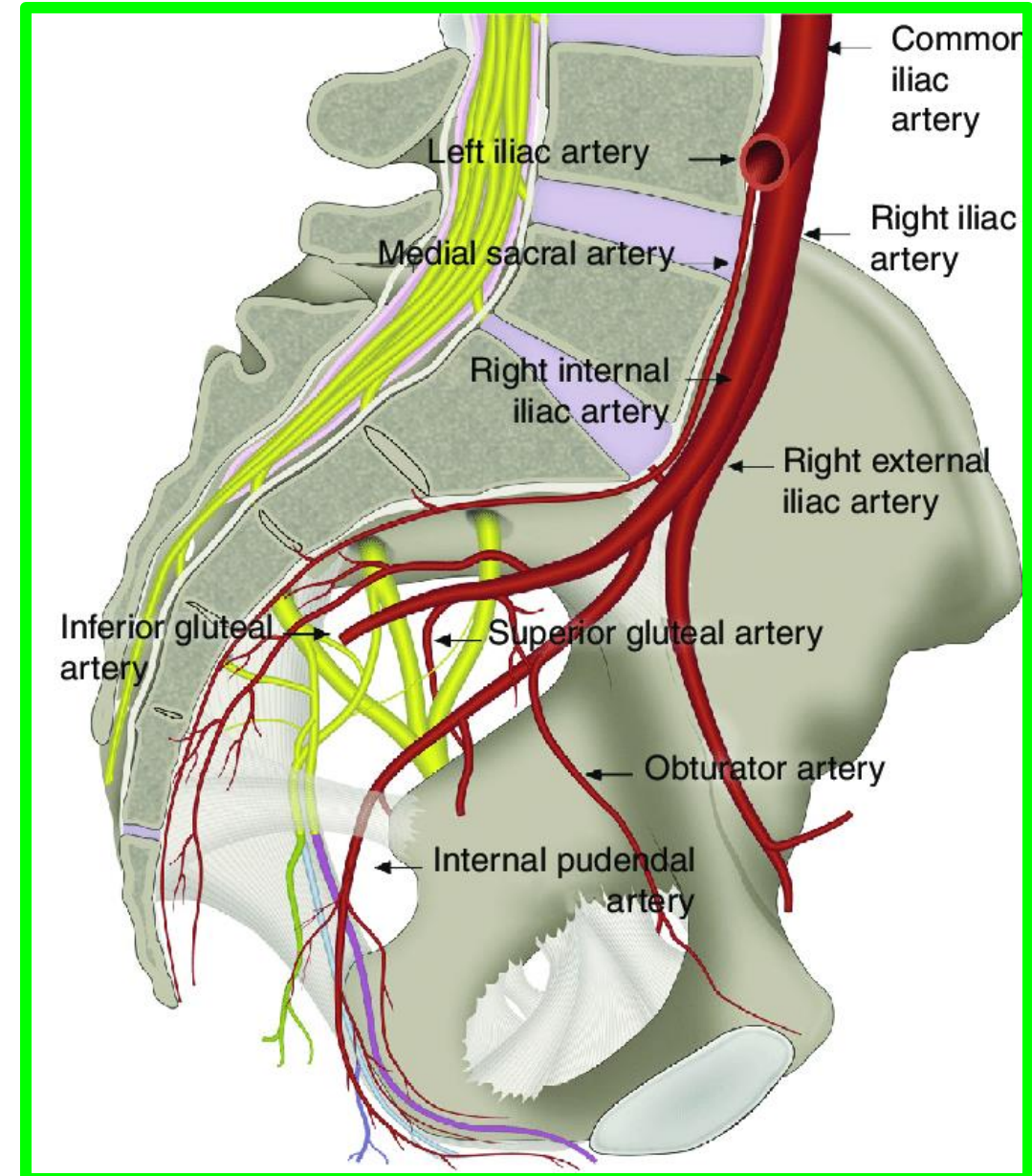
7. Inferior gluteal artery

- ✓ **Origin:** Anterior division of internal iliac artery
- ✓ **Course:** Leaves pelvis through greater sciatic foramen inferior to piriformis
- ✓ **Distribution:** Piriformis, coccygeus, levator ani, and gluteal muscles



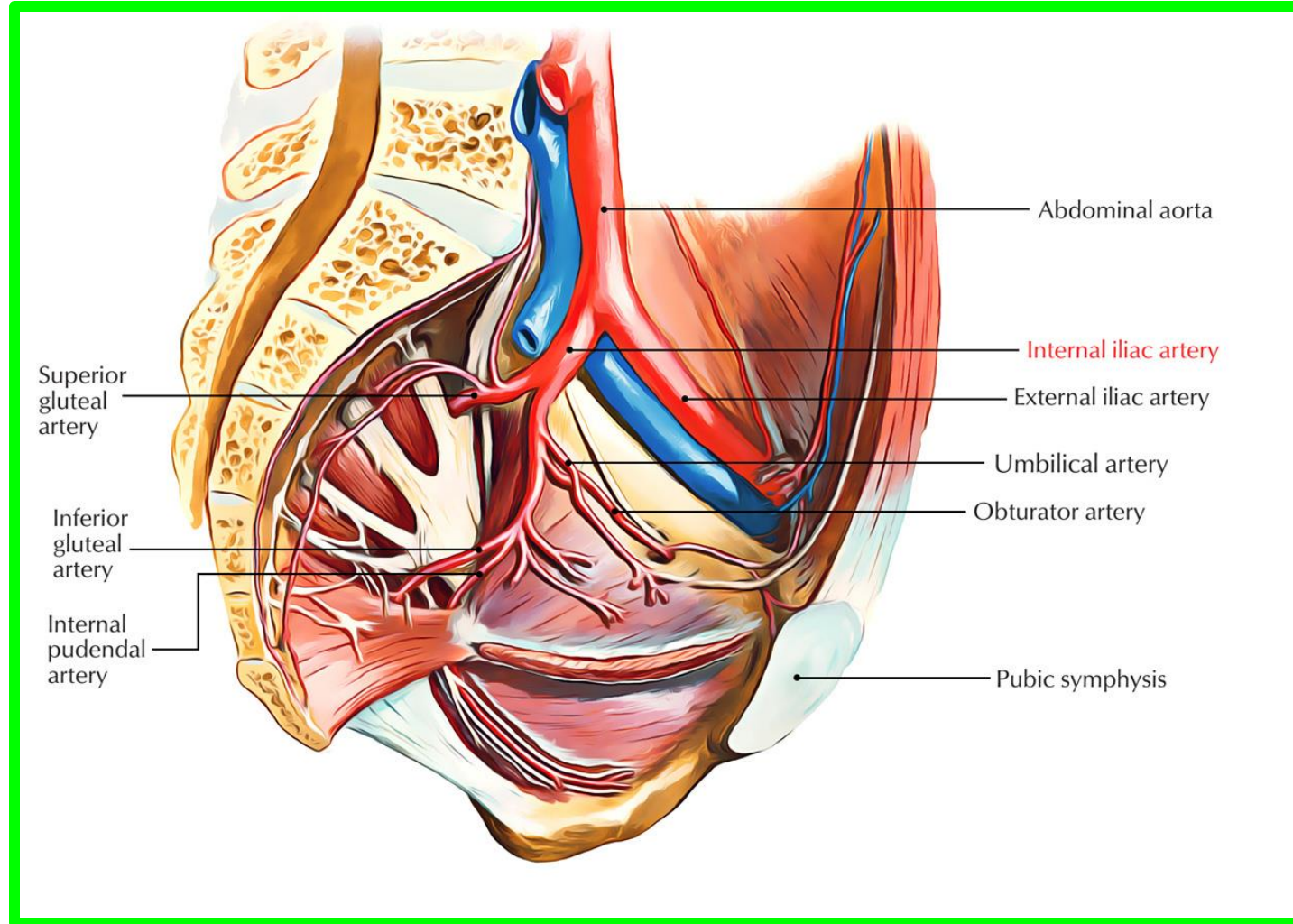
8. Internal pudendal artery

- ✓ **Origin:** Anterior division of internal iliac artery
- ✓ **Course:** Leaves pelvis through greater sciatic foramen and enters perineum (ischio-anal fossa) by passing through lesser sciatic foramen
- ✓ **Distribution:** Main artery to perineum, including muscles of anal canal and perineum; skin and urogenital triangle; erectile bodies



Posterior division of internal iliac artery

- ✓ **Origin:** Internal iliac artery
- ✓ **Course:** Passes posteriorly and gives rise to parietal branches
- ✓ **Distribution:** Pelvic wall and gluteal region

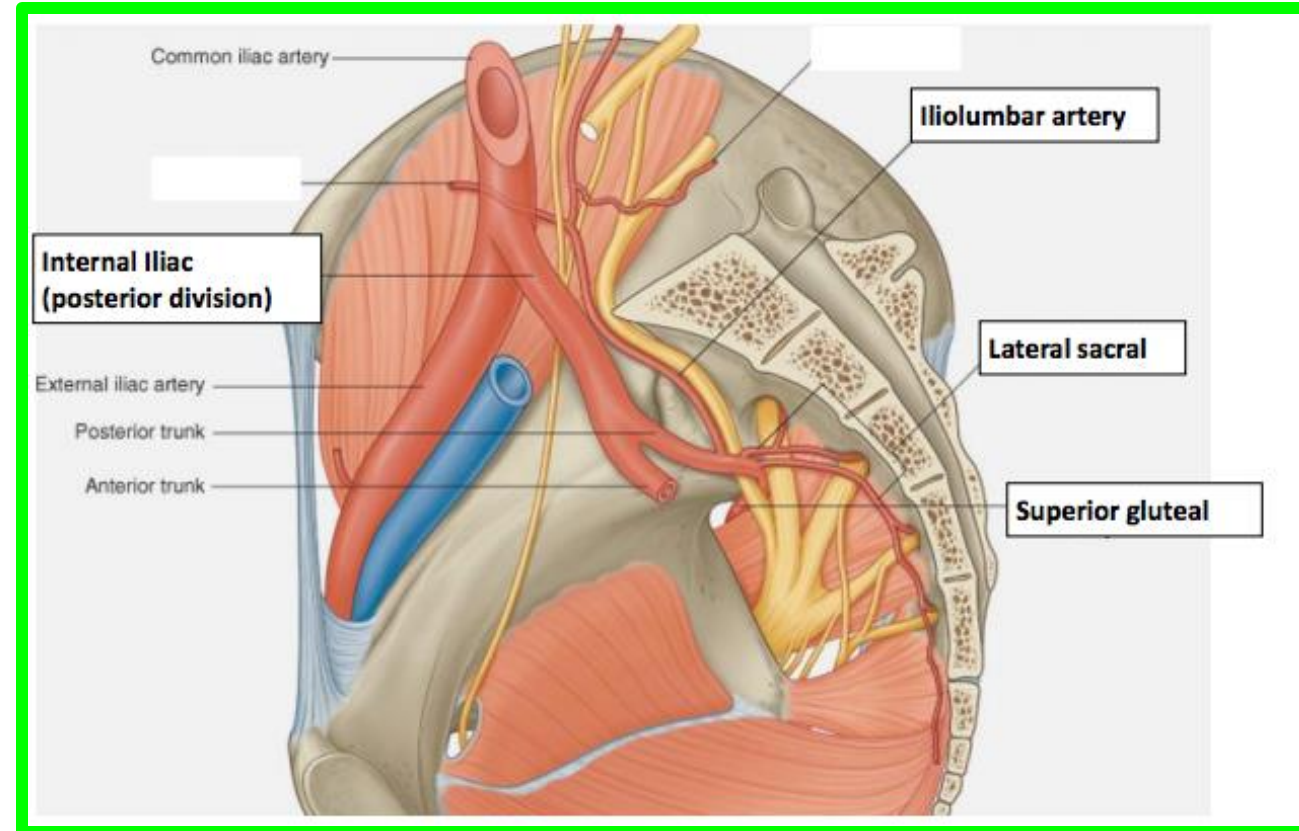


Posterior division of internal iliac artery

Dr. Aiman Al Maathidy
Tuesday 14 May 2024

1. Iliolumbar Artery

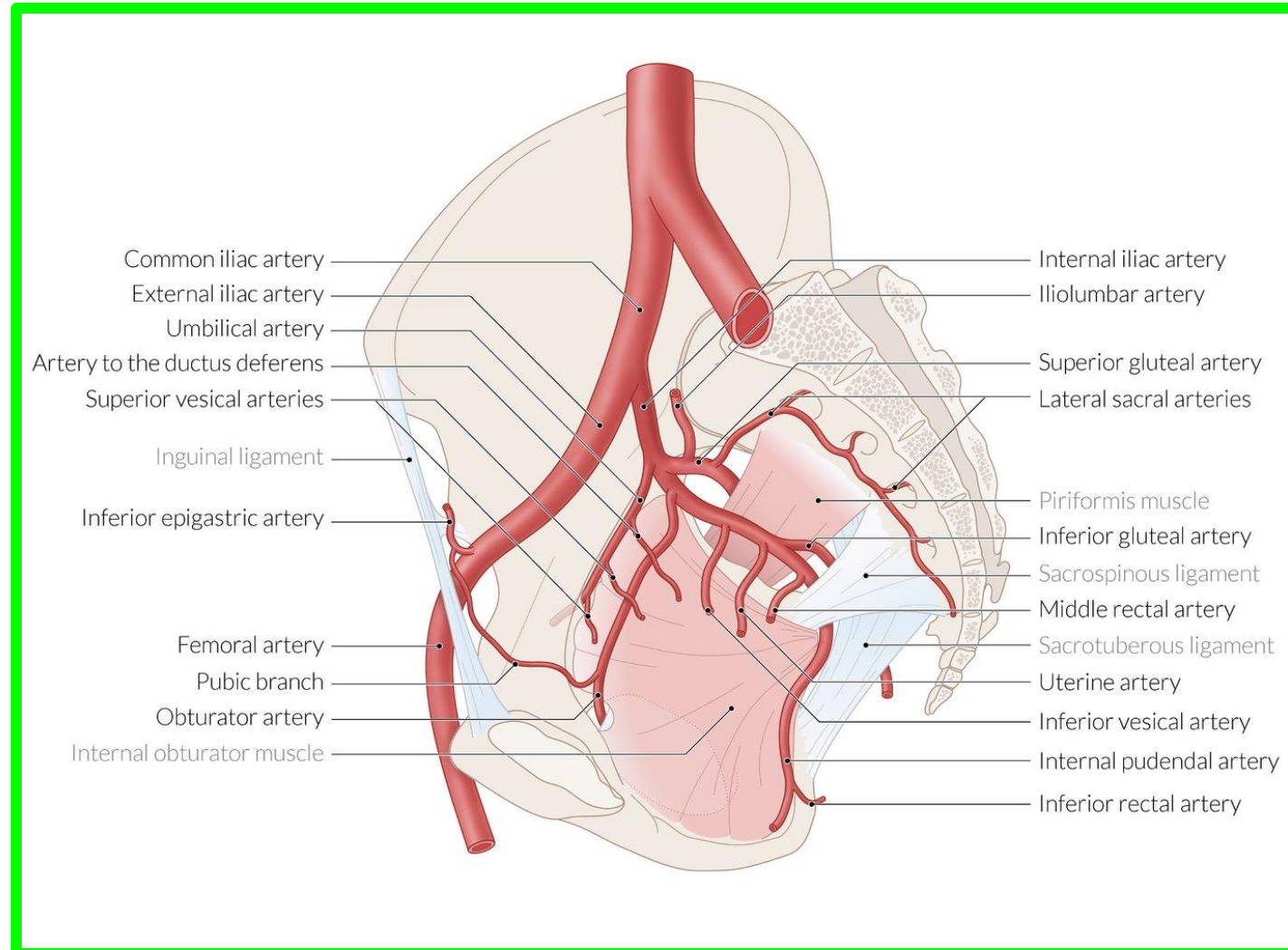
- ✓ **Origin:** Posterior division of internal iliac artery
- ✓ **Course:** Ascends anterior to sacroiliac joint and posterior to common iliac vessels and psoas major
- ✓ **Distribution:** Iliacus, psoas major, quadratus lumborum muscles, and cauda equina in vertebral canal



Posterior division of internal iliac artery

2. Lateral sacral (superior and inferior) Artery

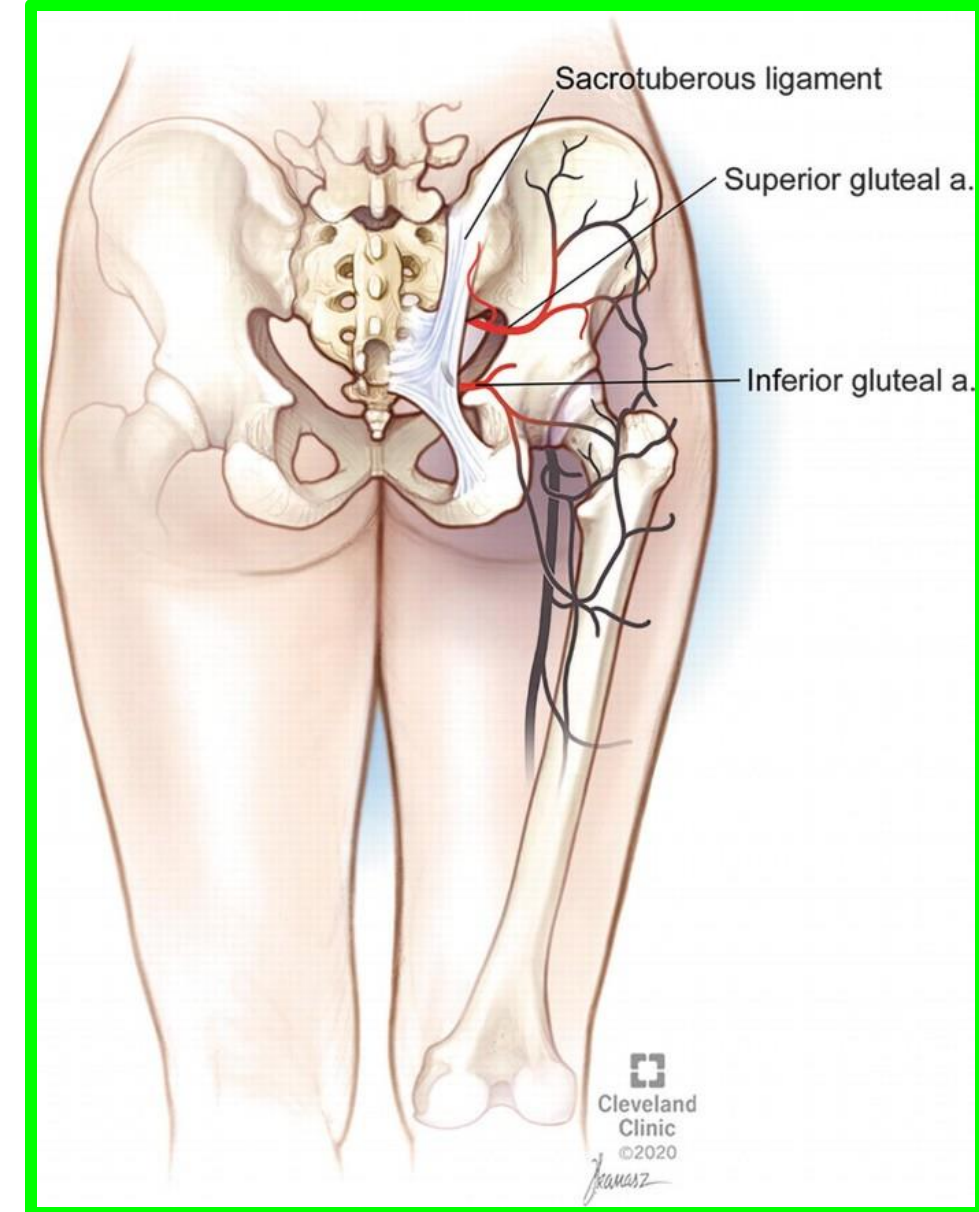
- ✓ **Origin:** Posterior division of internal iliac artery
- ✓ **Course:** Run on superficial aspect of piriformis
- ✓ **Distribution:** Piriformis and vertebral canal



Posterior division of internal iliac artery

3. Superior gluteal Artery

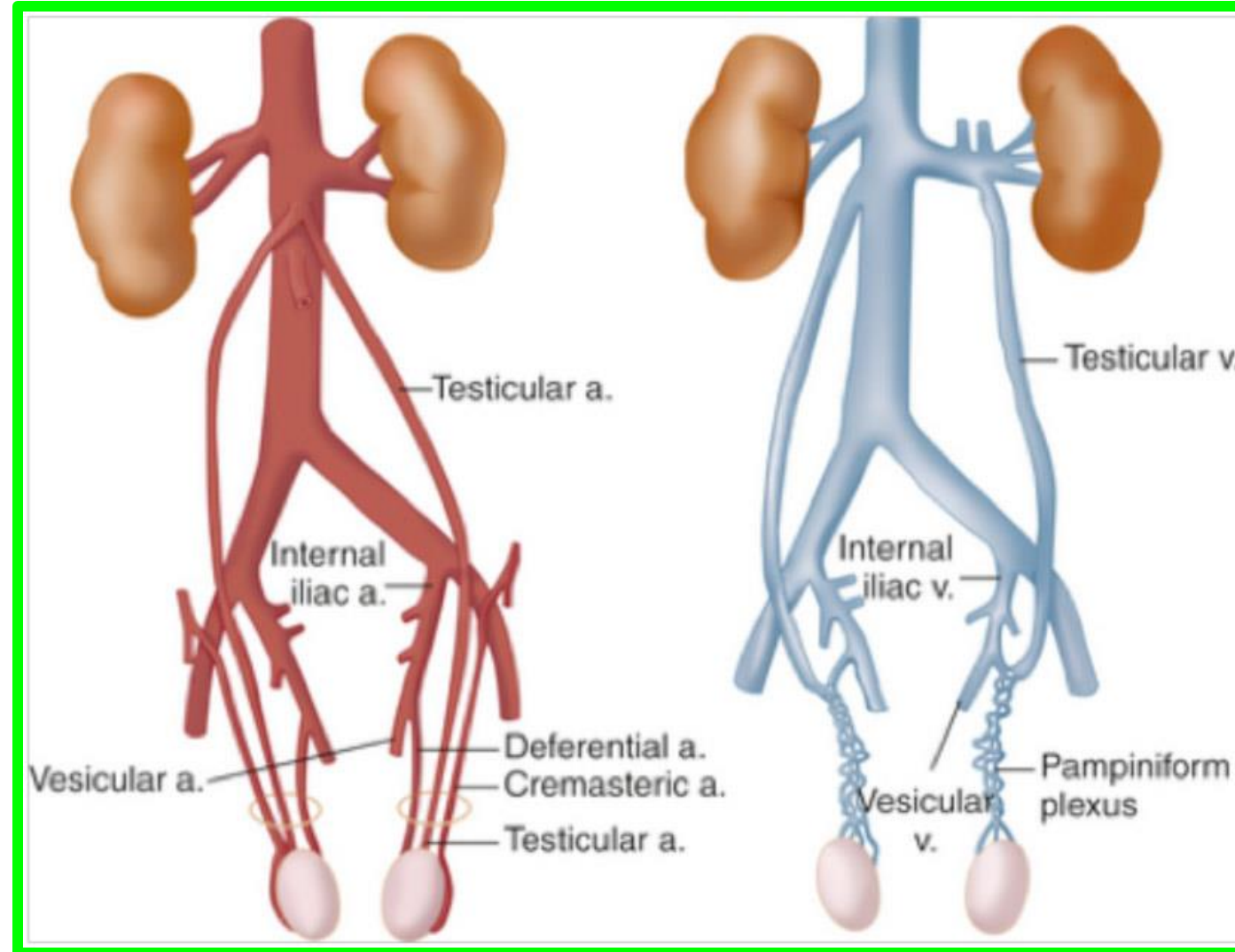
- ✓ **Origin:** Posterior division of internal iliac artery
- ✓ **Course:** Leaves pelvis through greater sciatic foramen, superior to piriformis
- ✓ **Distribution:** Gluteal muscles and tensor fasciae latae



Gonadal Artery from Abdominal aorta Descends retroperitoneally

Testicular Artery (♂)

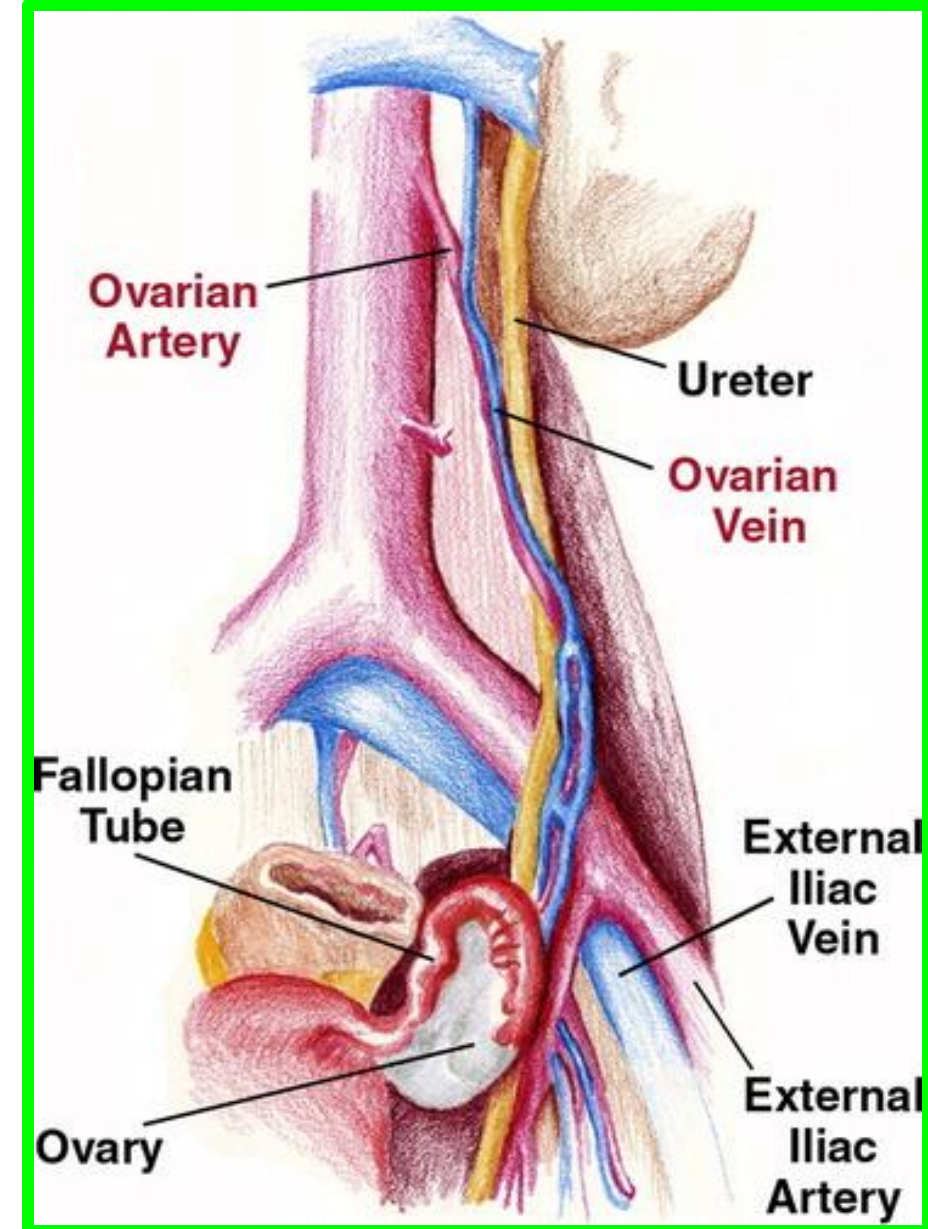
- ✓ **Origin:** Abdominal aorta
- ✓ **Course:** traverses inguinal canal and enters scrotum
- ✓ **Distribution:** Abdominal ureter, testis, and epididymis



Gonadal Artery from Abdominal aorta Descends retroperitoneally

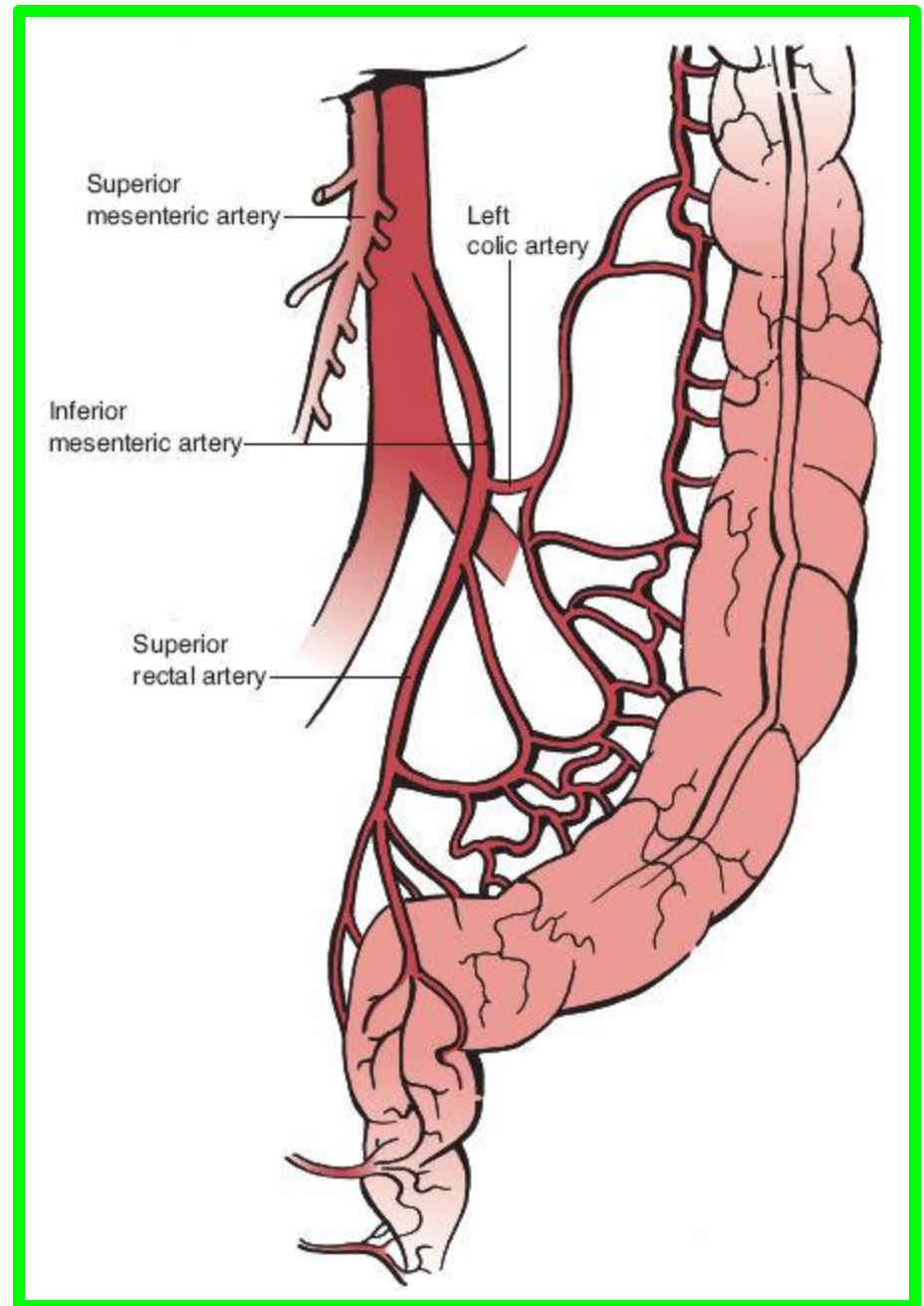
Ovarian Artery (♀)

- ✓ **Origin:** Abdominal aorta
- ✓ **Course:** crosses pelvic brim, descends in suspensory ligament of ovary
- ✓ **Distribution:** Abdominal and/or pelvic ureter, ovary, and ampullary end of uterine tube



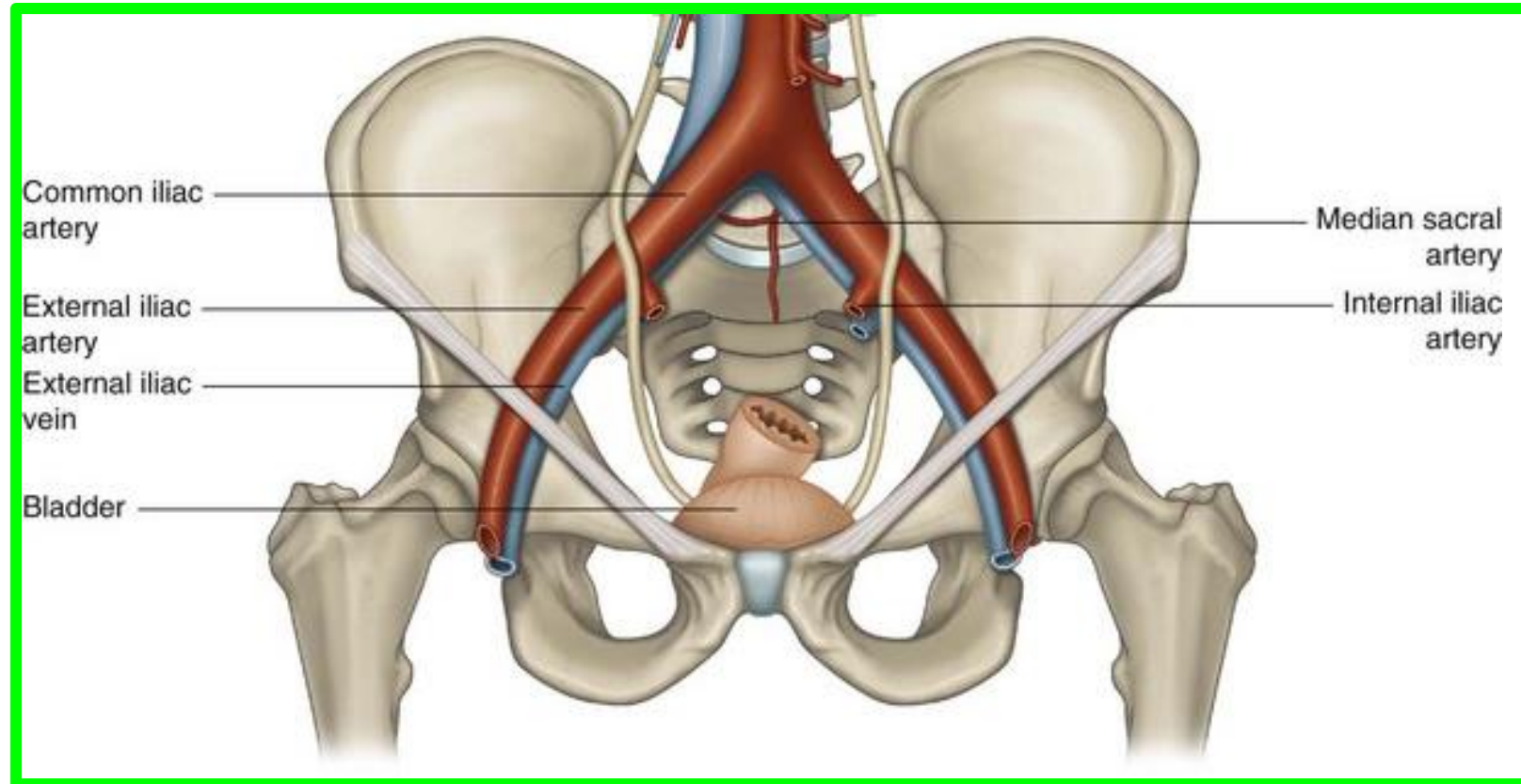
Superior rectal Artery

- ✓ **Origin:** Continuation of inferior mesenteric artery
- ✓ **Course:** Crosses left common iliac vessels and descends into pelvis between layers of sigmoid mesocolon
- ✓ **Distribution:** Superior part of rectum



Median sacral Artery

- ✓ **Origin:** Posterior aspect of abdominal aorta
- ✓ **Course:** Descends close to midline over **L4 and L5 vertebrae**, sacrum, and coccyx
- ✓ **Distribution:** Inferior lumbar vertebrae, sacrum, and coccyx



Dr. Aiman Qais Afar
Tuesday 14 May 2024

هنا تعاظمت الامل والعبر
تتم بالعطر تحنانا وتنتشر
مال الوداع خليط ملؤه الحذر
فالوجه مبتسم والدمع منهمر

هنا التقينا هنا جادت قرائنا
هنا تأخت كازهار عواطفنا
يا دوحة الطب يا حبي وعاطفتي
فالفرح والحزن في اعماقنا مزجا