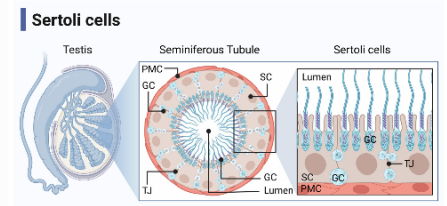


# Male genital system

## Epithelial lining

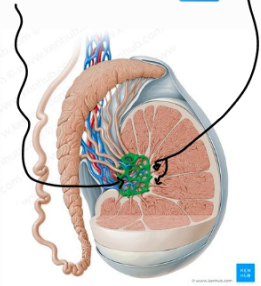
### Seminiferous tubules

- **Stratified epithelium called spermatogenic epith.**  
The spermatogenic epithelium consists of 2 types of cells:
  1. Spermatogenic cells
  2. Sertoli cells
- **Basement membrane**
- **Contractile myoid cells**



### Intra-testicular ducts :

1. Tubuli recti →
2. Rete testis →



Straight ends of the seminiferous tubules, lined e **Sertoli cells only**

Anastomosing network of tubules lined e **cuboidal cells**

### Extra-testicular ducts :

Vasa efferentia  
(ductus efferentia)

10-20 tubules , Lined e simple cuboidal partially ciliated  
Smooth muscle in the wall ( peristaltic contraction)

### Epididymis

Lined e Principle cells; pseudo-stratified columnar with stereocilia

### Vas deferens

Narrow lumen & 3 layers of smooth ms

1. Outer longitudinal
2. Middle circular
3. Inner longitudinal

Its mucosa covered e pseudostratified columnar e stereocilia

The ejaculatory duct

Lined e pseudo-stratified columnar epith.

Seminal vesicles

Mucosa:

Extensively folded ↑ surface area for secretion

Lined e pseudostratified columnar epithelium with height that varies e testosterone levels

Form 70% of the seminal fluid :

1. Alkaline
2. Yellow & viscid
3. Rich in fructose

Prostate

Highly folded pseudo-stratified columnar epithelium

Produce prostatic fluid :

1. Thin & milky
2. Gives semen its odor
3. ++ Fibrinolysin

Bulbo- urethral  
( Cowper's ) glands

Their acini lined with simple cuboidal epithelium, mucus secreting.