

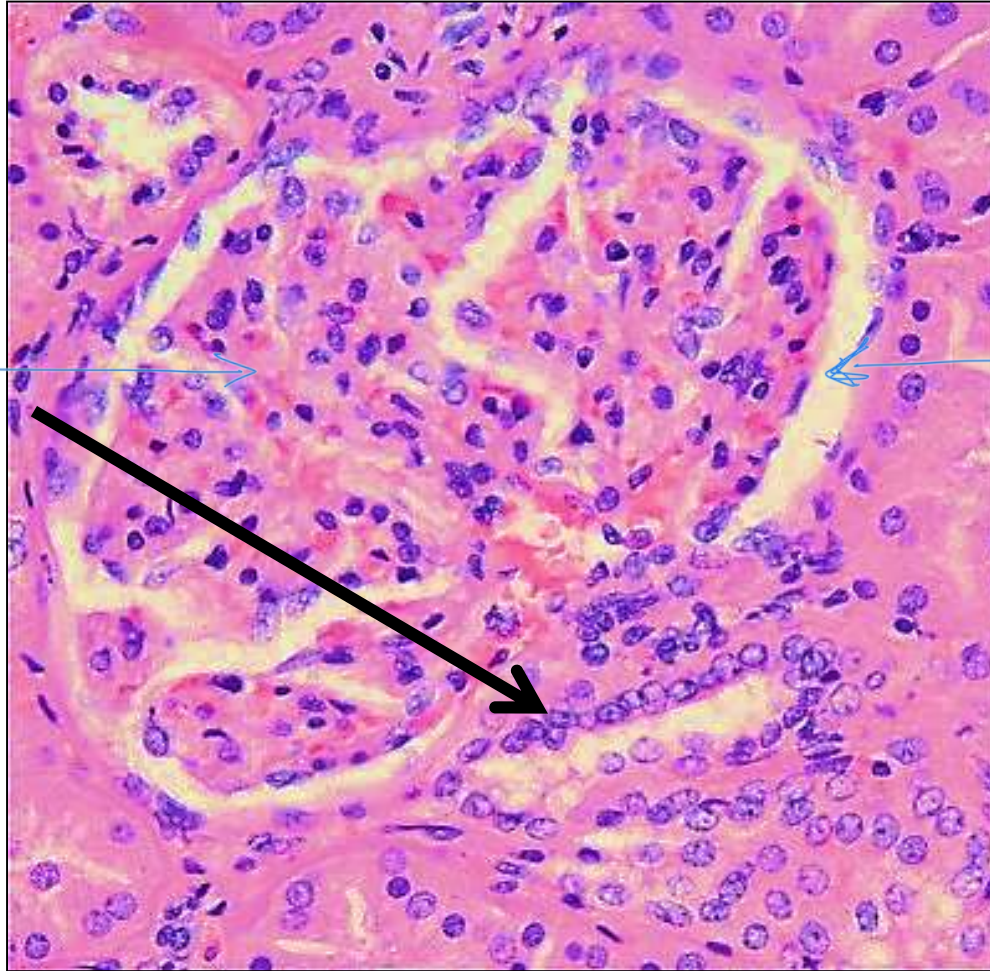
Practical slides

Juxta- glomerular apparatus

Macula densa

المنطقة الخارجة

glomerulus
المنطقة الداخلة



renal
Corpuscle

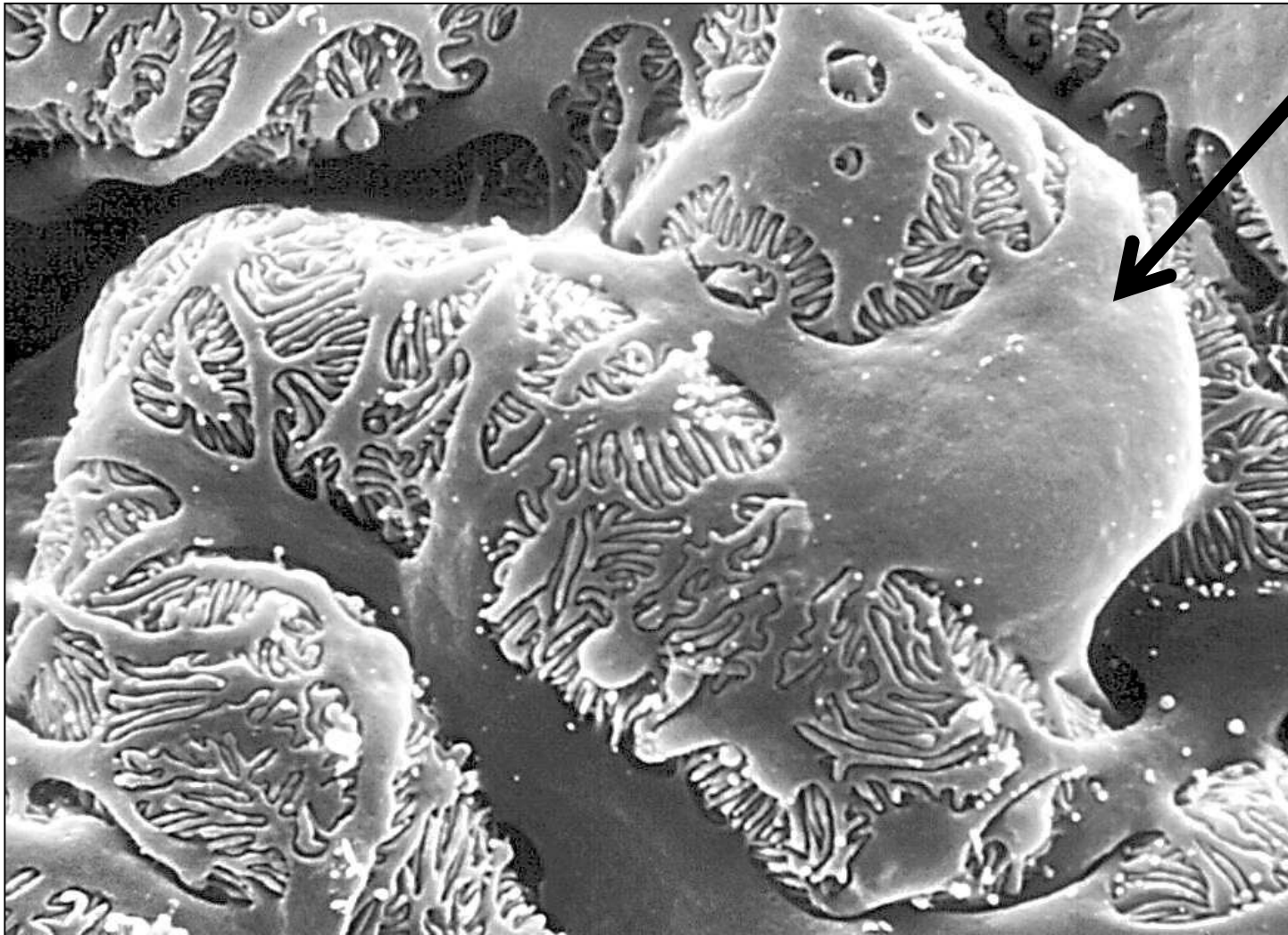
Bowman cap

NOT
DCT

Podocyte

EM.

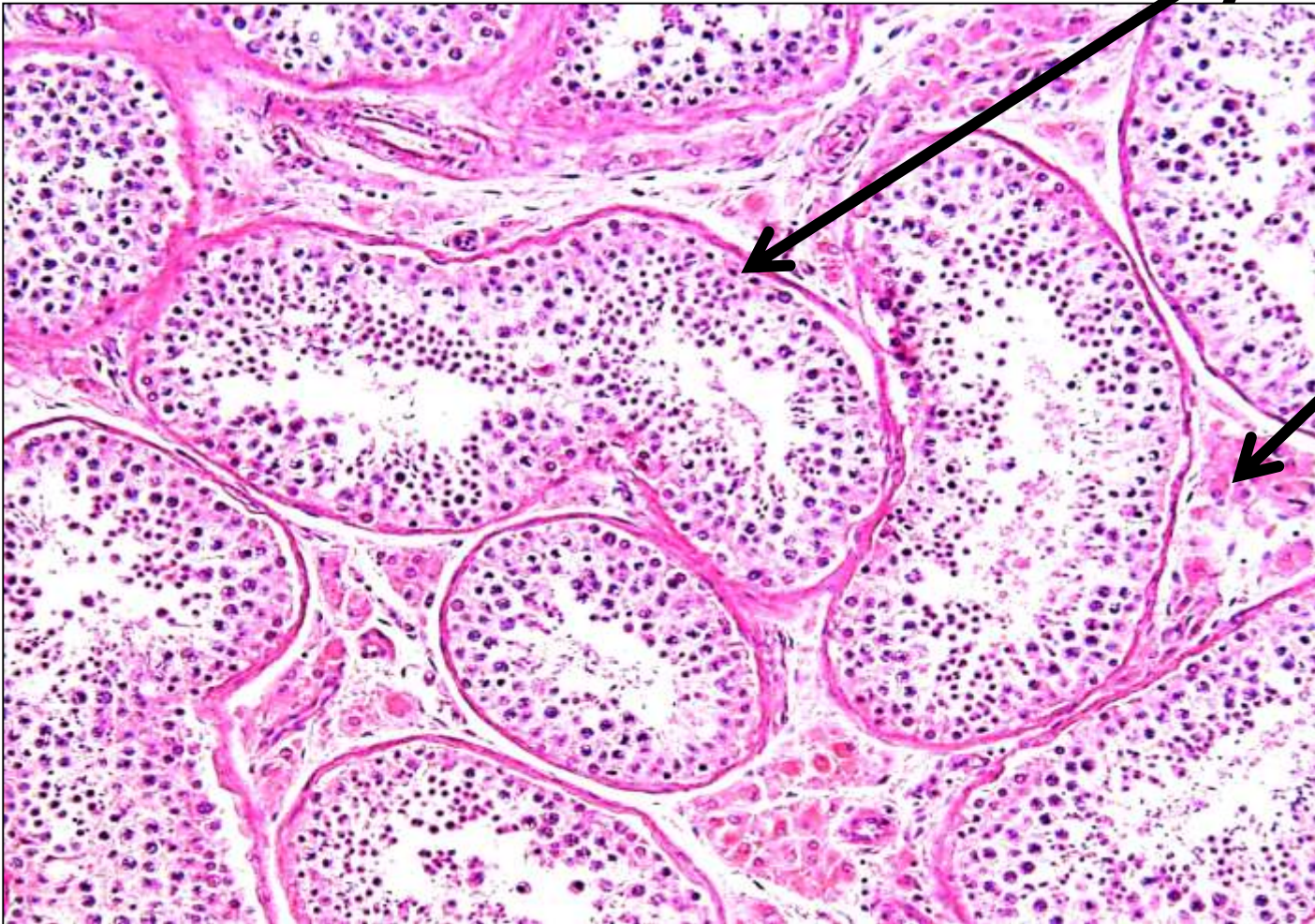
Fig. 1 *



The testis

Seminiferous tubules

spermatogenic epith



Interstitial
cells of
Leydig

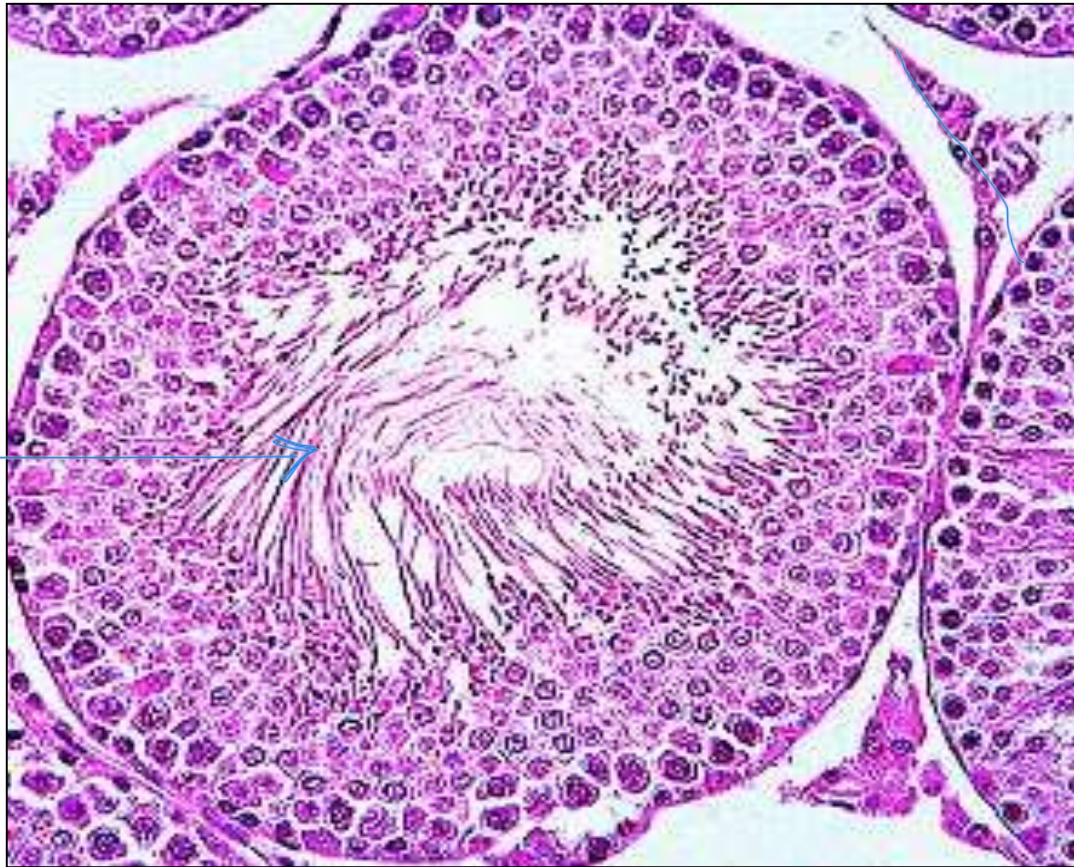
*Endocrine
gland*

*steroid
secreting
cells*

Cross section in Testis

seminiferous
tubules.

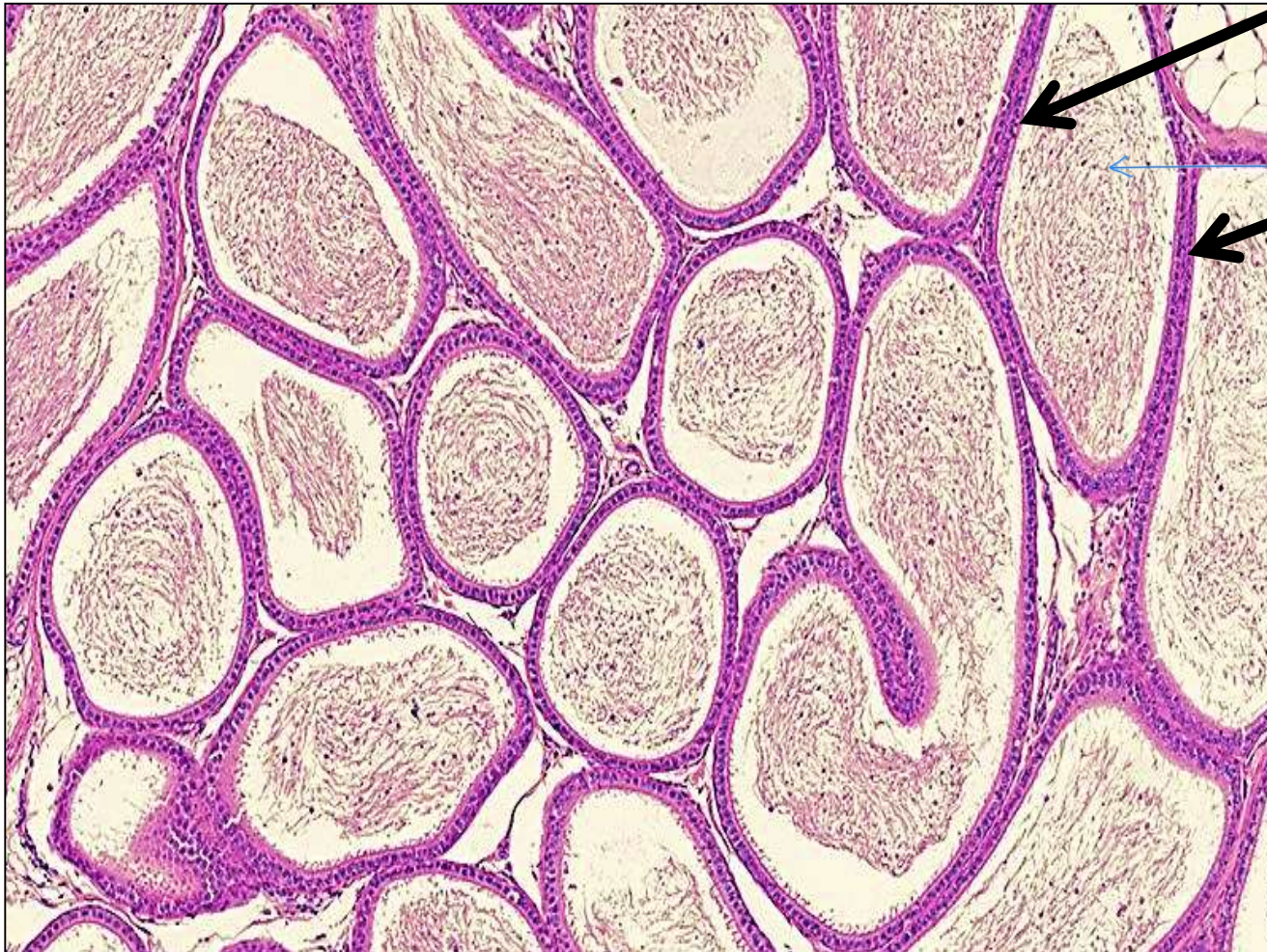
tail of
sperm.



Function :-

The epididymis

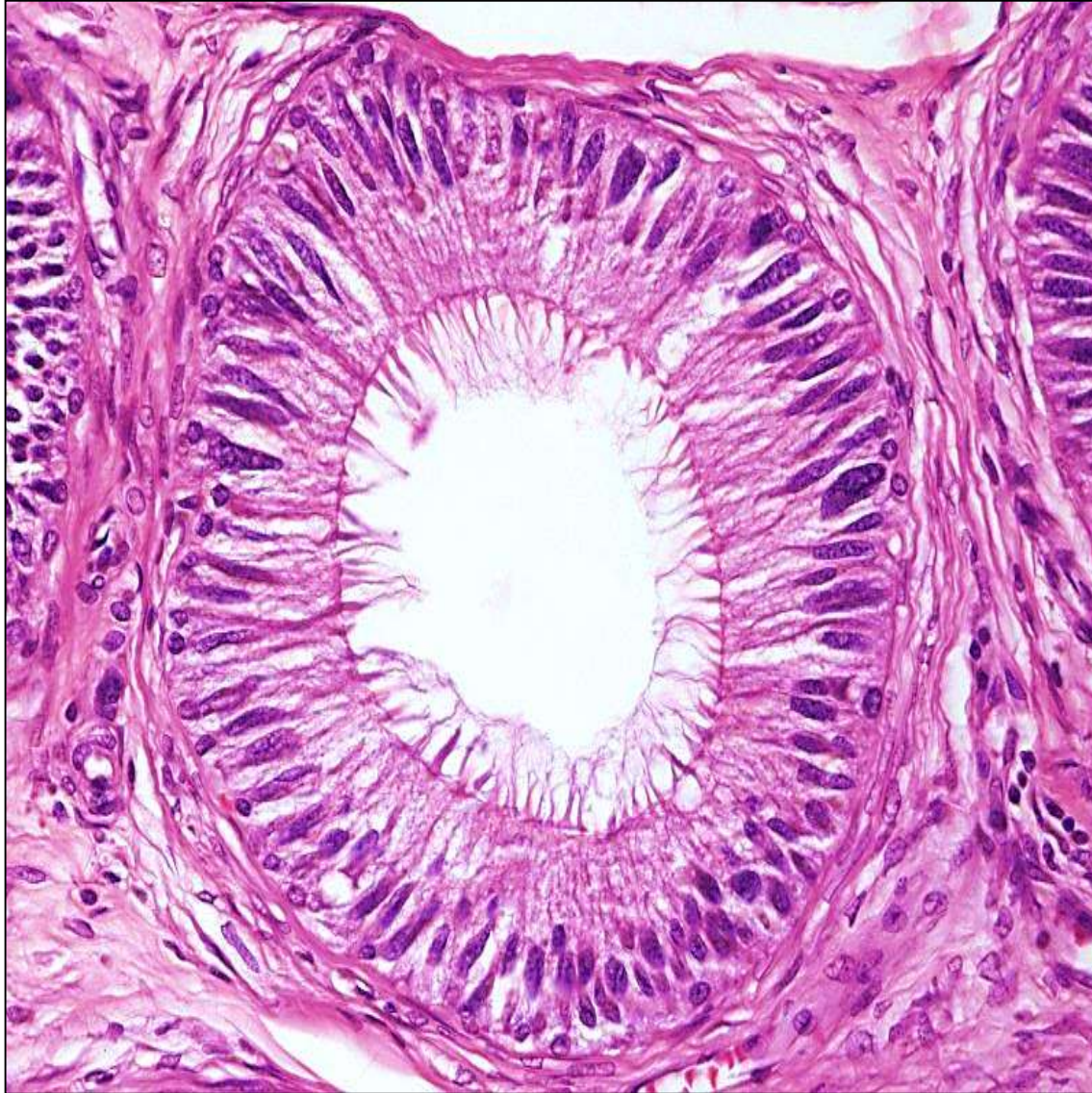
Pseudostratified columnar with Stereocilia



sperms

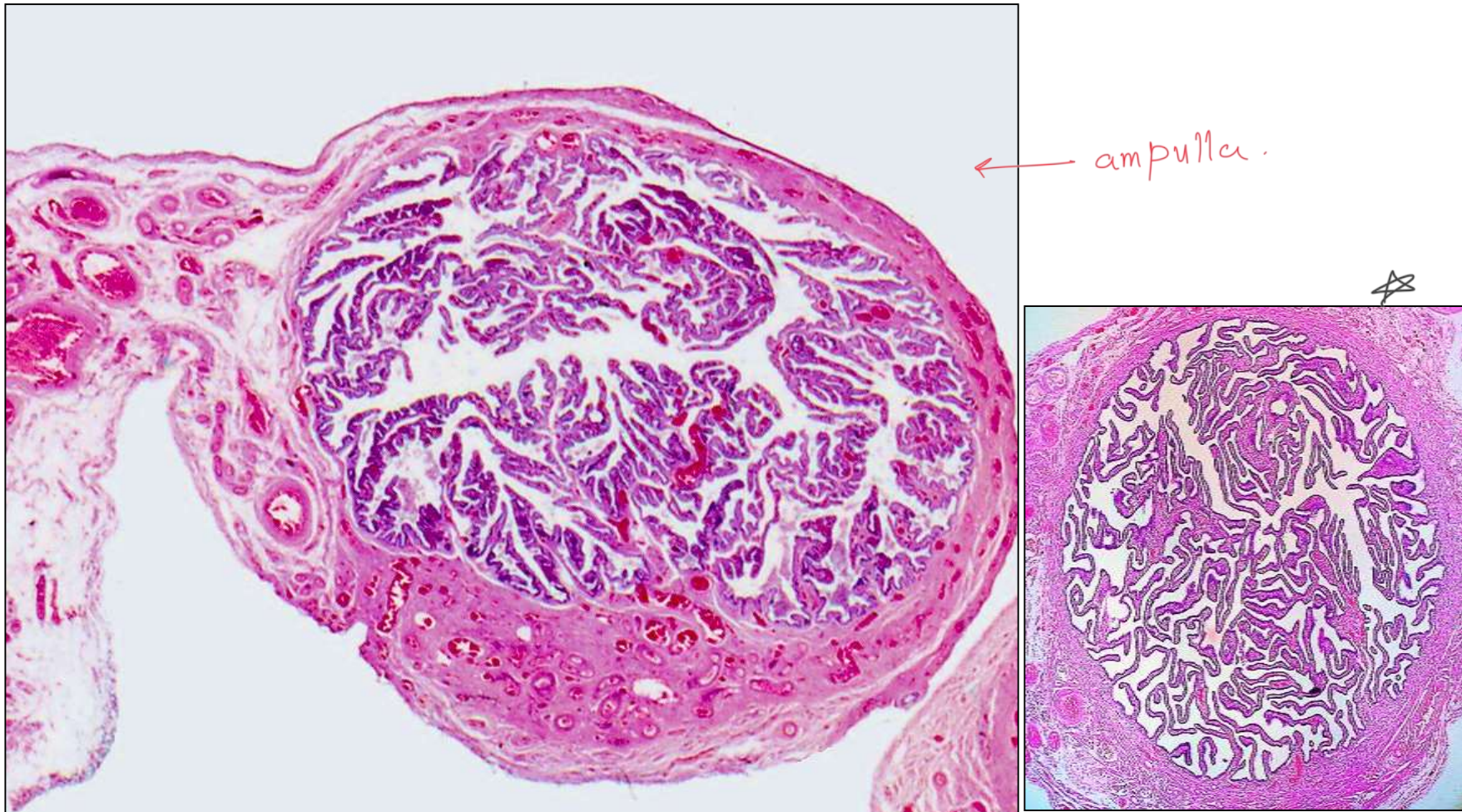
Ductus epididymis

Cross section in epididymis



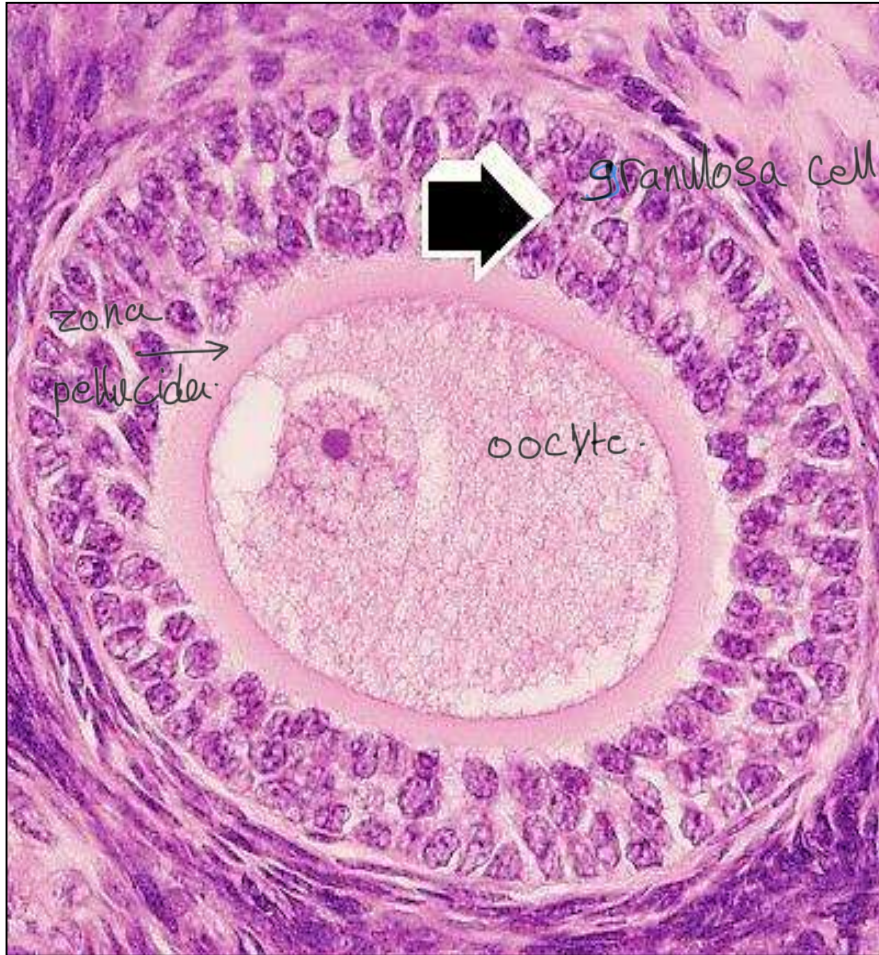
principle cells,
pseudo-stratified
columnar
with stereocilia
absorption ←
Not movement

The fallopian tube



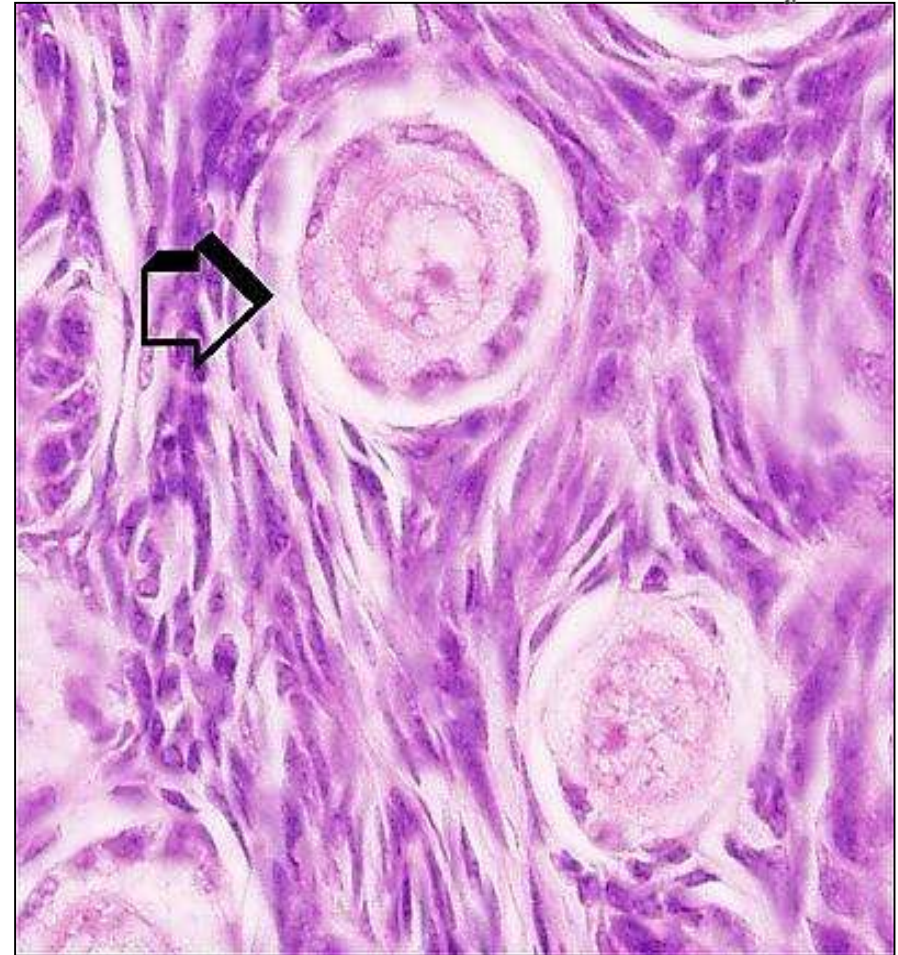
- 1- highly folded mucosa
- 2- Lined with simple columnar partially ciliated partially secretory (Peg cells)
- 3- muscularis : IC, OL

Ovarian follicles



Multi-laminar primary follicle

oocyte.



Primordial follicle

Thank you

