

# Disturbances in general appearance.

## Facial expressions

- significance indicate the patient's mood
- some occasions may trust than his feeling

## posture

### waxy flexibility

- the patient's limbs
- some time
- any position in which they are placed even unusual uncomfortable

### Catatonia

- \* the patients suffering from phrenic illness
- adopt strange postures
- long periods
- move of whole

## Dress

- absurdly
- eccentric (unusual)
- hideous

### Dark

- \* depressed people

### bright

- \* manic people

## Mannerism

- repeated small movements
- habitual + abnormal

### ex

- unusual ways of smoking cigarette
- gestures of hands
- raising their eyebrows
- frequency + repeated contraction of certain muscle group known as Tics
  - corner of his mouth repeatedly pulled out
  - muscle around one eye repeatedly contracted.
  - \* some highly anxious children or adults

## Hygiene (Narcissism)

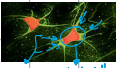
- excessive love of self
- \* frequent in some immature personality
- great amount of time
- attention devoted to the care of body

## progressive falling of their standard of hygiene

- lack concern for normal cleanliness

# Disturbance in perception

## perception



- retina
- skin
- skin
- skin
- internal organs

## Hallucinations

### auditory Hallucination

- hear voices
- peculiar voices
- person known him
- commands
- accusation
- threats
- punishment
- reassurance
- \* major depressive reaction
- \* organic brain disorder

### Visual Hallucination

- see visions of objects
- clearly defined people
- flight of flight
- \* Schizophrenic
- \* depressive reactions

### olfactory and Gustatory hallucinations

- found together in one patient
- sense of smell and taste

### Tactile Hallucinations

- felt of any part of the body surface
- bizarre sensation may in internal organ
- \* Schizophrenic
- \* acute organic reaction

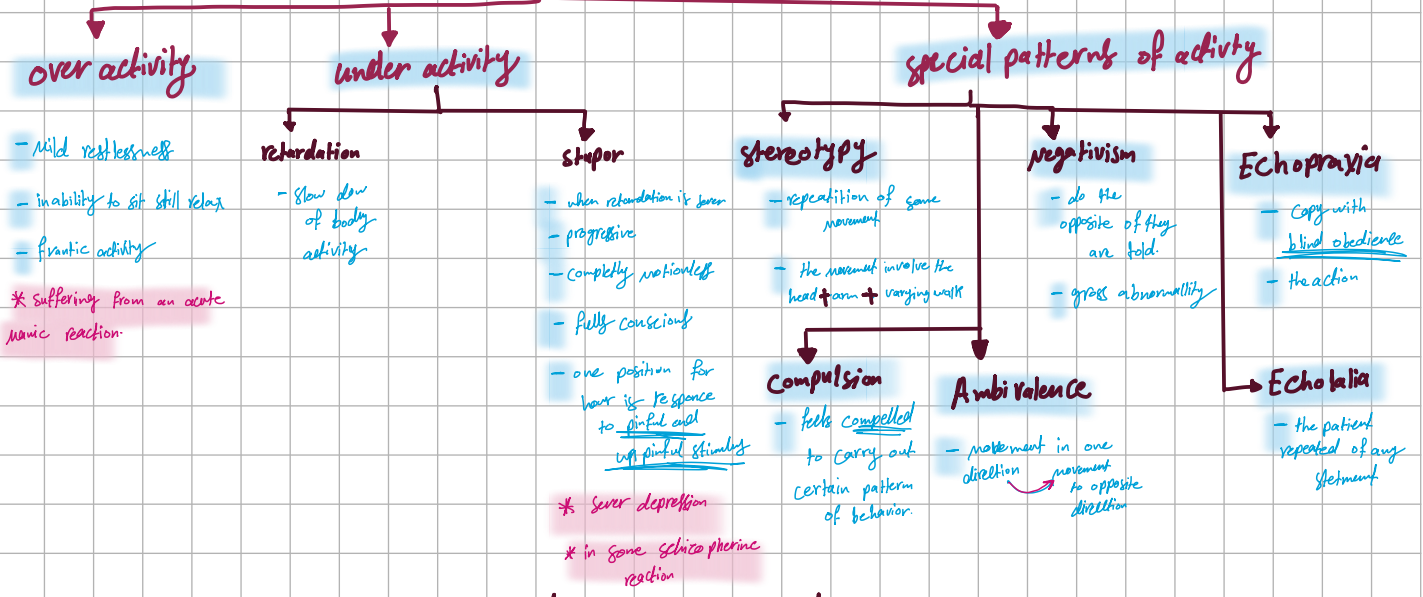
### illusions

- false perception
- differ from hallucination
- may arise in response to identifiable external stimulus
- wrongly interpreted

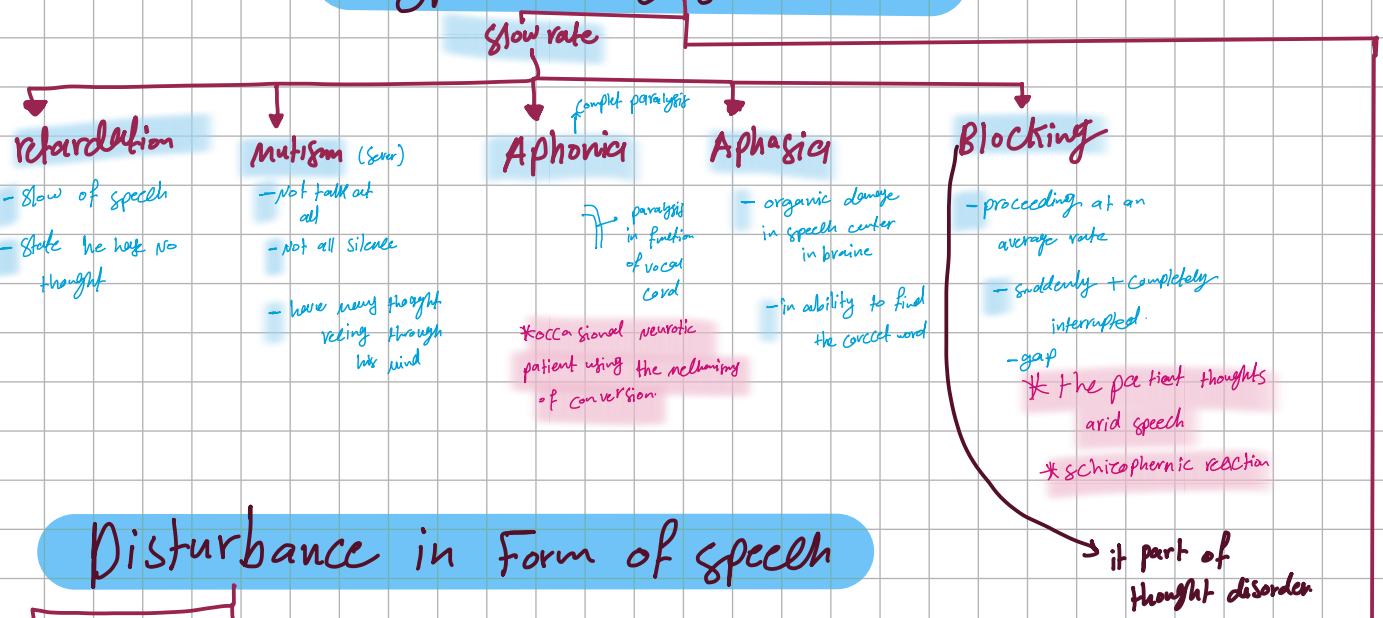
### phobias

- irrational + excessive fear
- the patient realize the absurdity of his fear

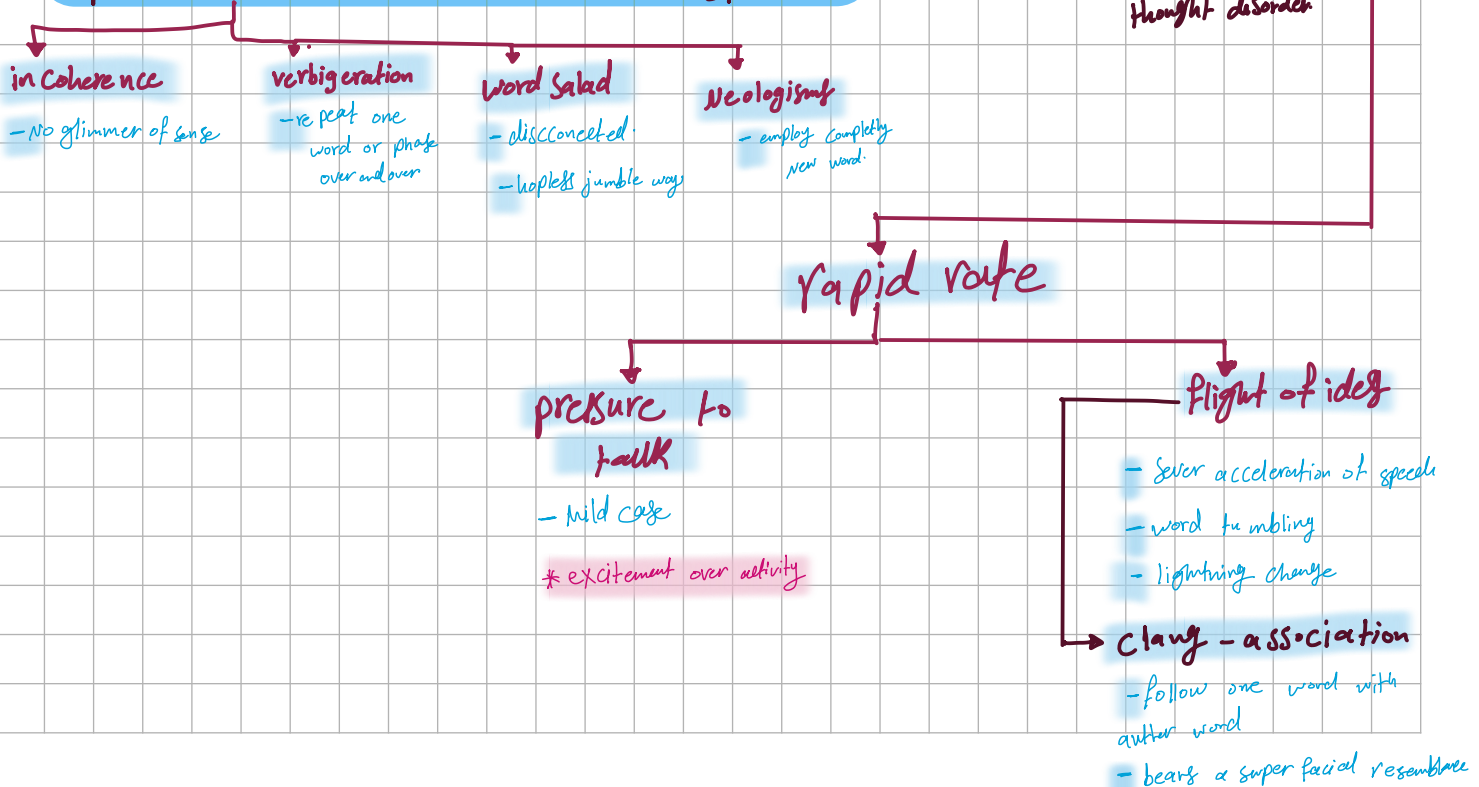
# activity and behavior disorders



# Speech disorders



# Disturbance in Form of speech



# Thought disorders

## Delusion

- false fixed belief
- can't attend held by logical argument
- distort reality

## obsessions

- recurring thought
- recognize to be abnormal
- causes considerable mental distress
- ↓ because of purposelessness

## Delusion of grandeur

- Primarily held idea of power, ...

- \* acute manic reaction
- \* schizophrenic psychotic disorder
- \* organic psychotic disorder

## Delusion of persecution

- plot against him
- victim
- police

## Delusion of guilt

- sudden in appearance
- believe have caused enormous harm
- refuse to agree that they are sick
- believe are being punished by god.

## Delusion of Hypochondriac

- hold fixed conviction
- present of defect in some part of own body

## idea of reference

- casual remarks
- actions of people special significance for him.

## passivity feeling

- feel controlled
- communities such
- beliefs of influence by other.

## nihilistic delusion

- that his is dead
- certain part of his body ceased to exist
- have been destroyed + lost his memory

# Mood disorders

## Depression

- state of sadness
- became a psychiatric symptom
- accompanied with feelings of anger + guilt + hopelessness + helplessness

## Anhedonia

- loss of interest
- withdrawal from all regular activities

- \* associated with depression

## Elation

- is abnormally cheerful + optimistic

- \* severe psychomotor retardation
- \* many depressed patient
- \* extremely restless and a.

## Euphoria

- loss of elation
- will being
- confidence
- enthusiasm

- \* major depressive illness
- \* schizophrenic reaction

## Ecstasy

- complete bliss
- part of mystical religious experience

- \* manic reaction
- \* schizophrenic patient

## anxiety

- bodily accompaniment
- the most important affect in psychiatric illness

## agitation

- Anxiety + severe deficit restlessness

## panic

- the most severe form of anxiety
- personal disequilibrium

## Hostility

- anger persistent
- causes and known to the patient

## inappropriate incongruous

- disharmony between patient feeling + behavior
- peculiar moods

- \* schizophrenic patients

## passive aggression

- the possibility for psychiatrist her self to unwittingly respond to patient's aggressiveness

## Apathy

- flatness of mood
- may reflected in their facial appearance

- \* chronic schizophrenic reaction
- \* organic brain disease

## lability

- rapid fluctuation of feeling

- \* brain damage patient