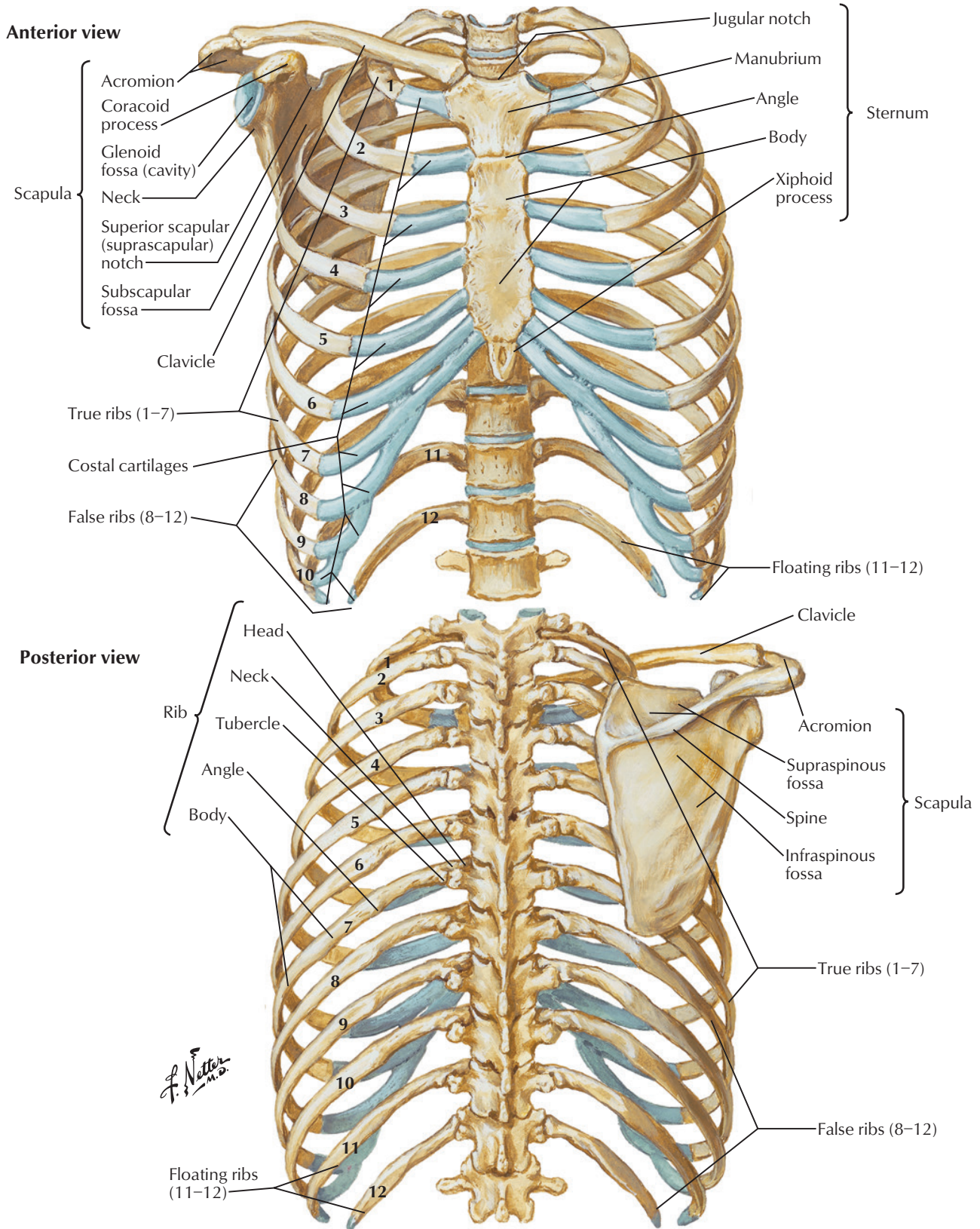
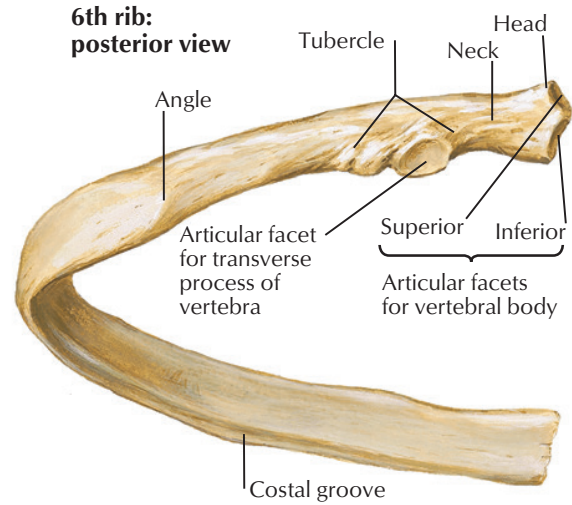
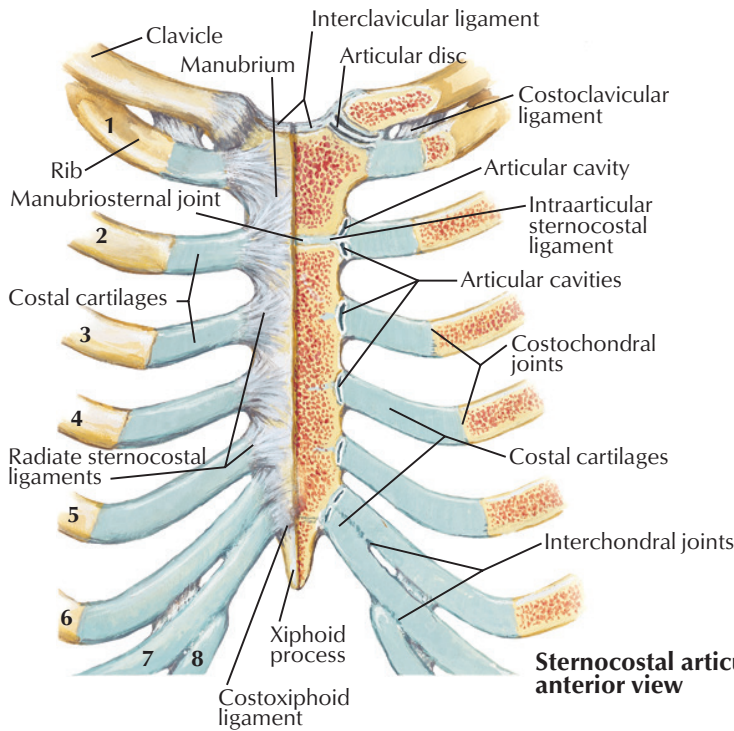


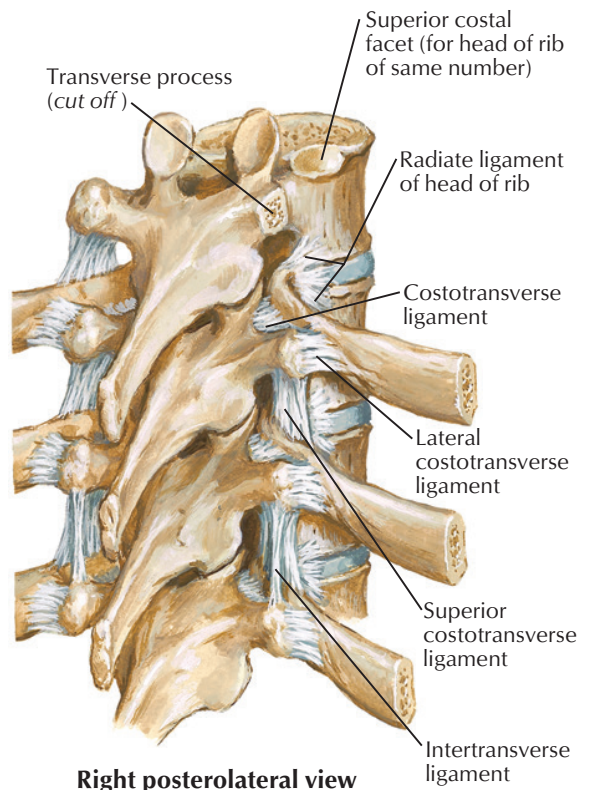
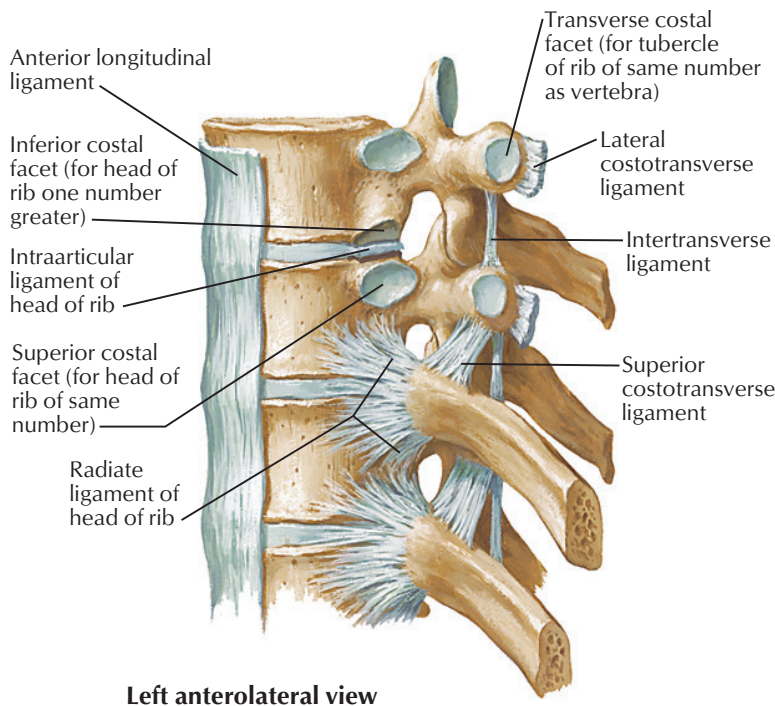
Bony Framework of Thorax



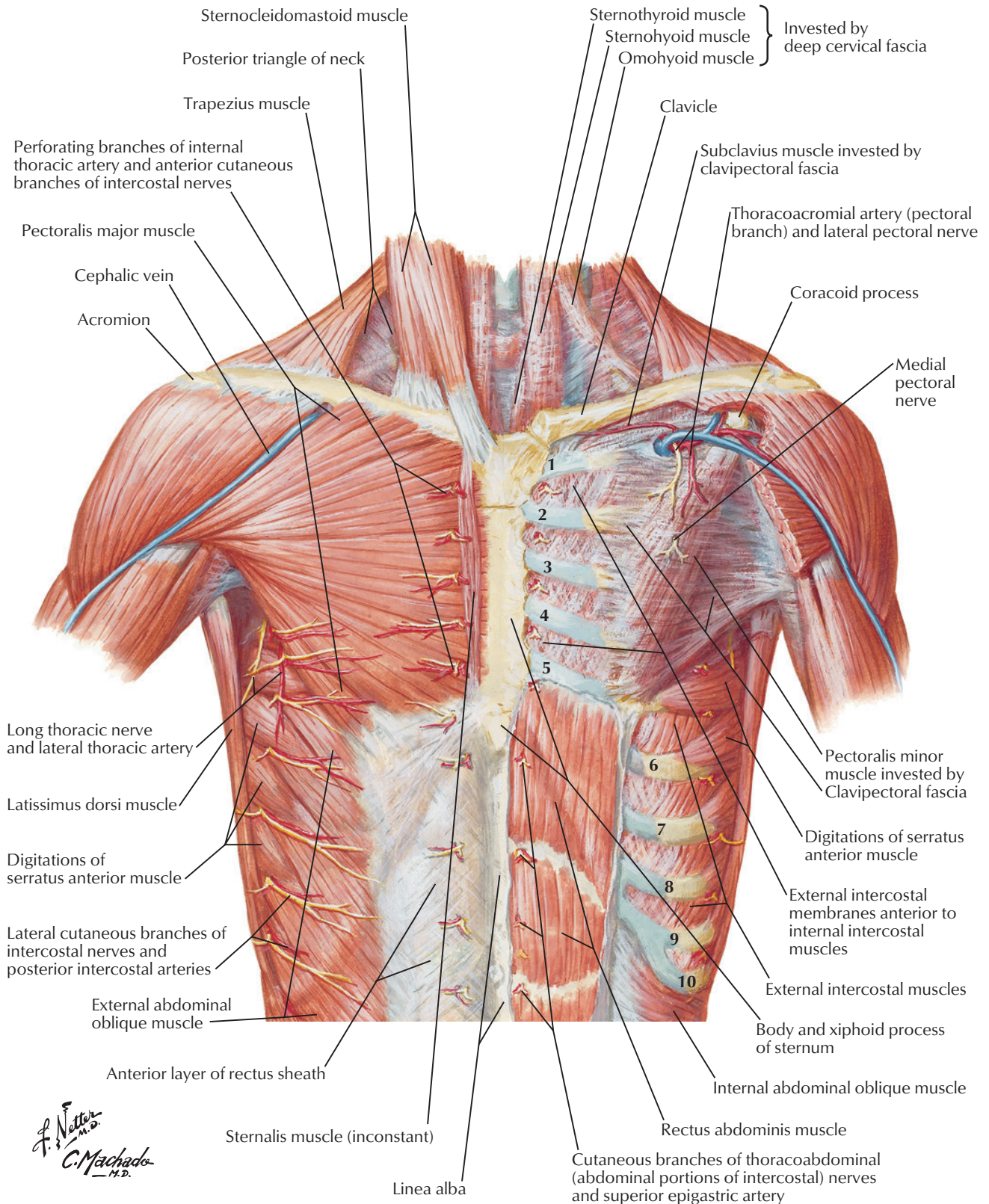


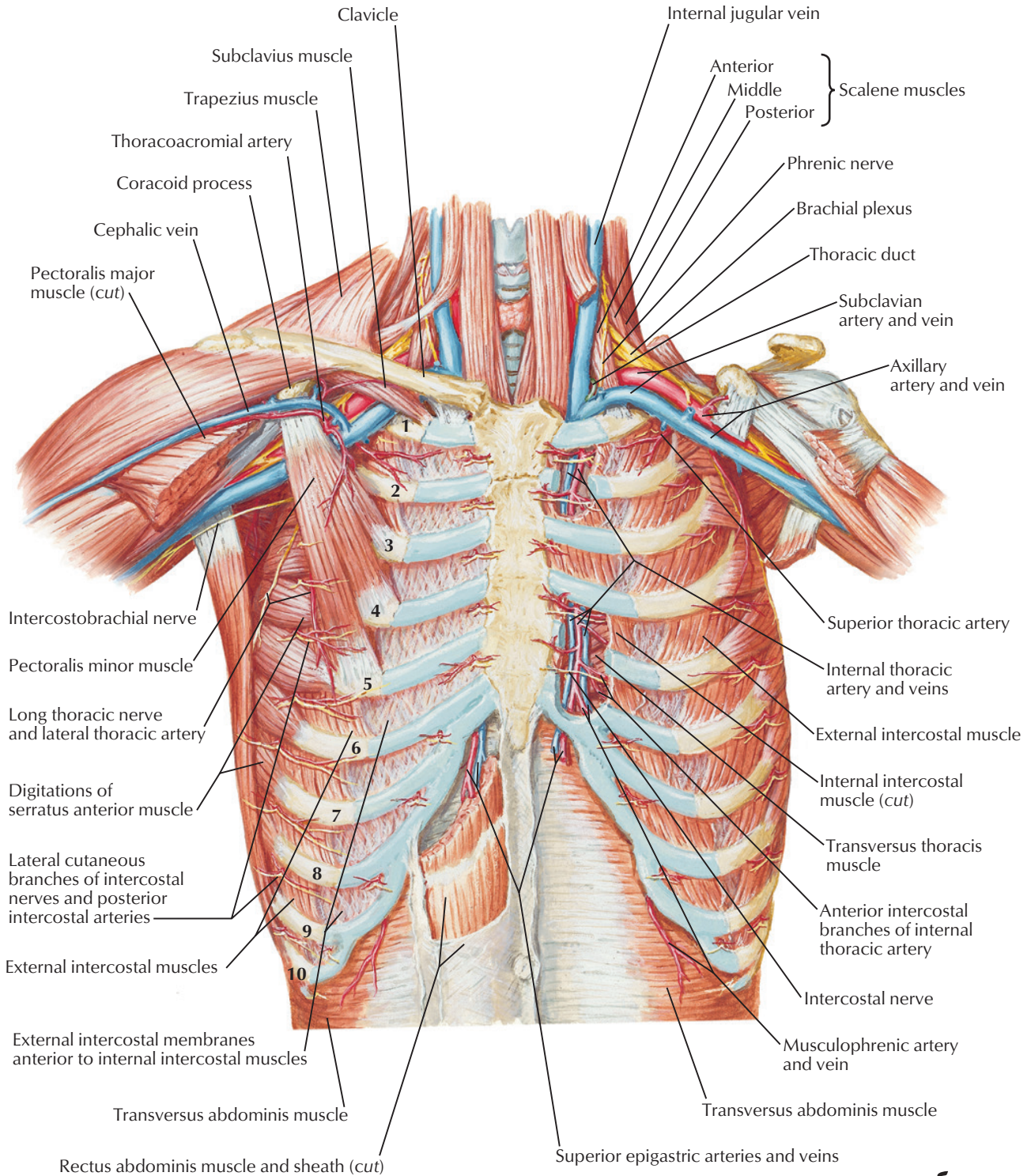
F. Netter M.D.

Note: The head of a typical rib articulates with the superior costal facet of the thoracic vertebra of the same number (by its inferior articular facet), the inferior costal facet of the vertebra above (by its superior articular facet), and the intervertebral disc between the two vertebrae. The costal tubercle articulates with the transverse process of the vertebra of the same number.

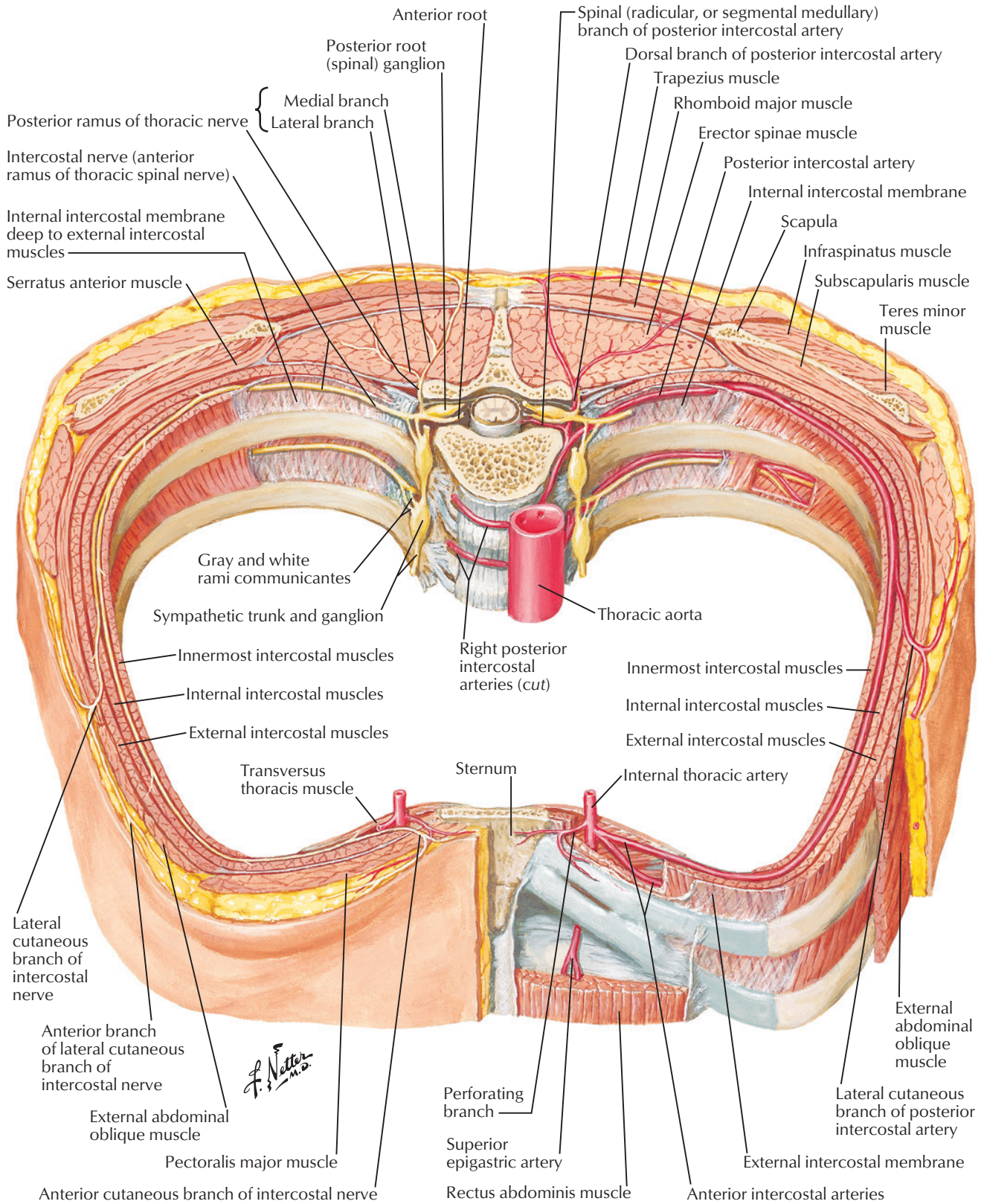


Anterior Thoracic Wall



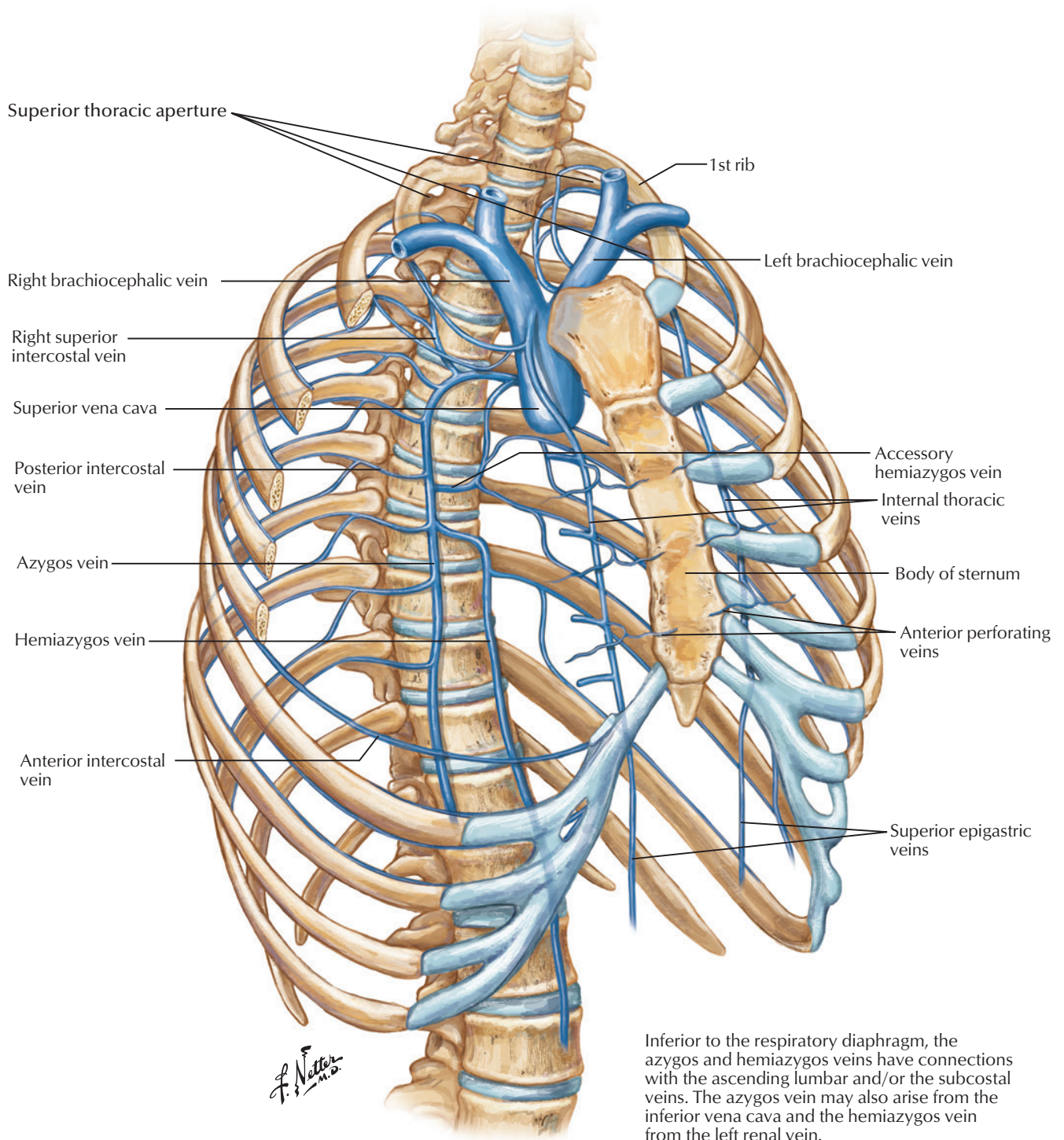


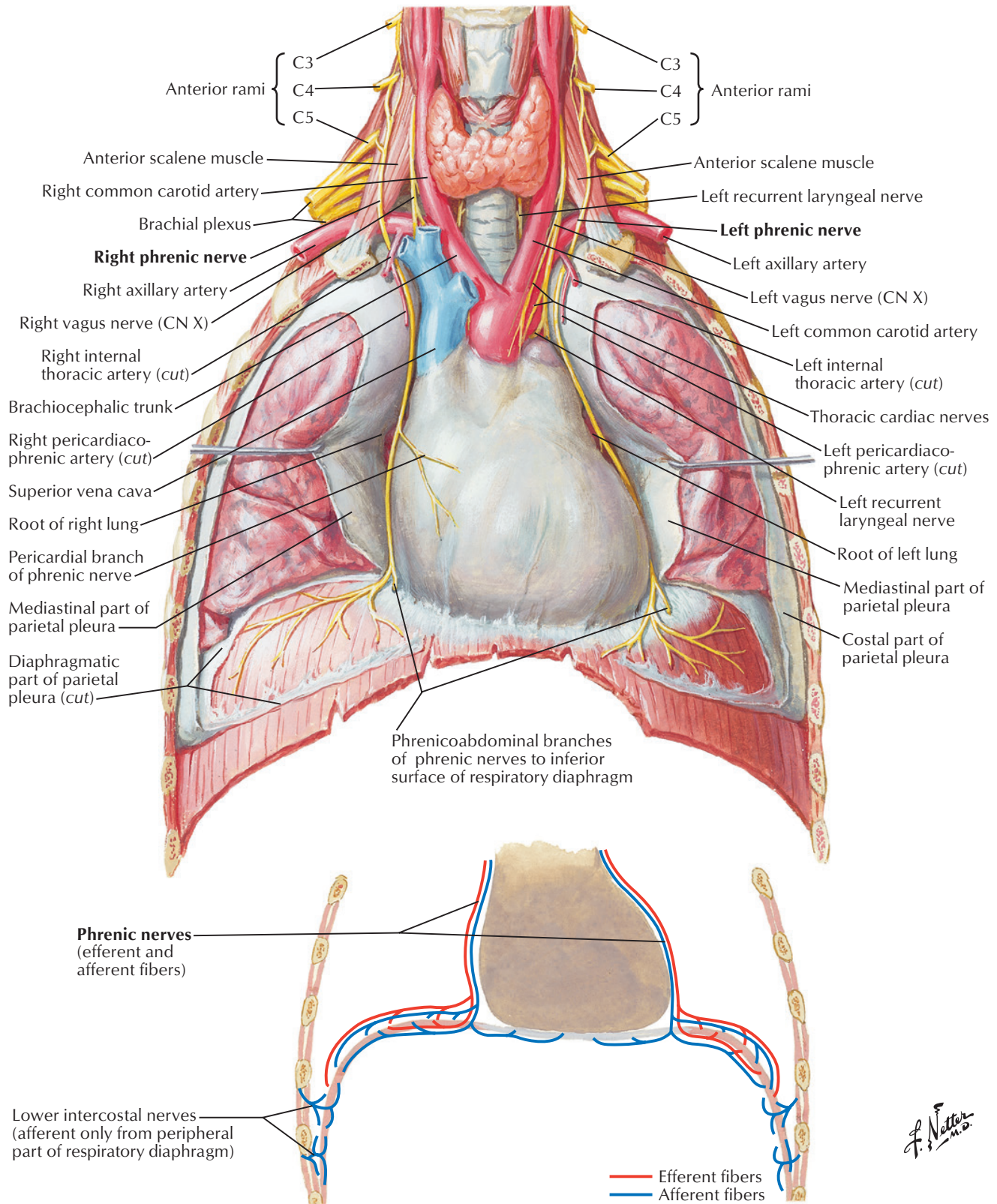
F. Netter M.D.

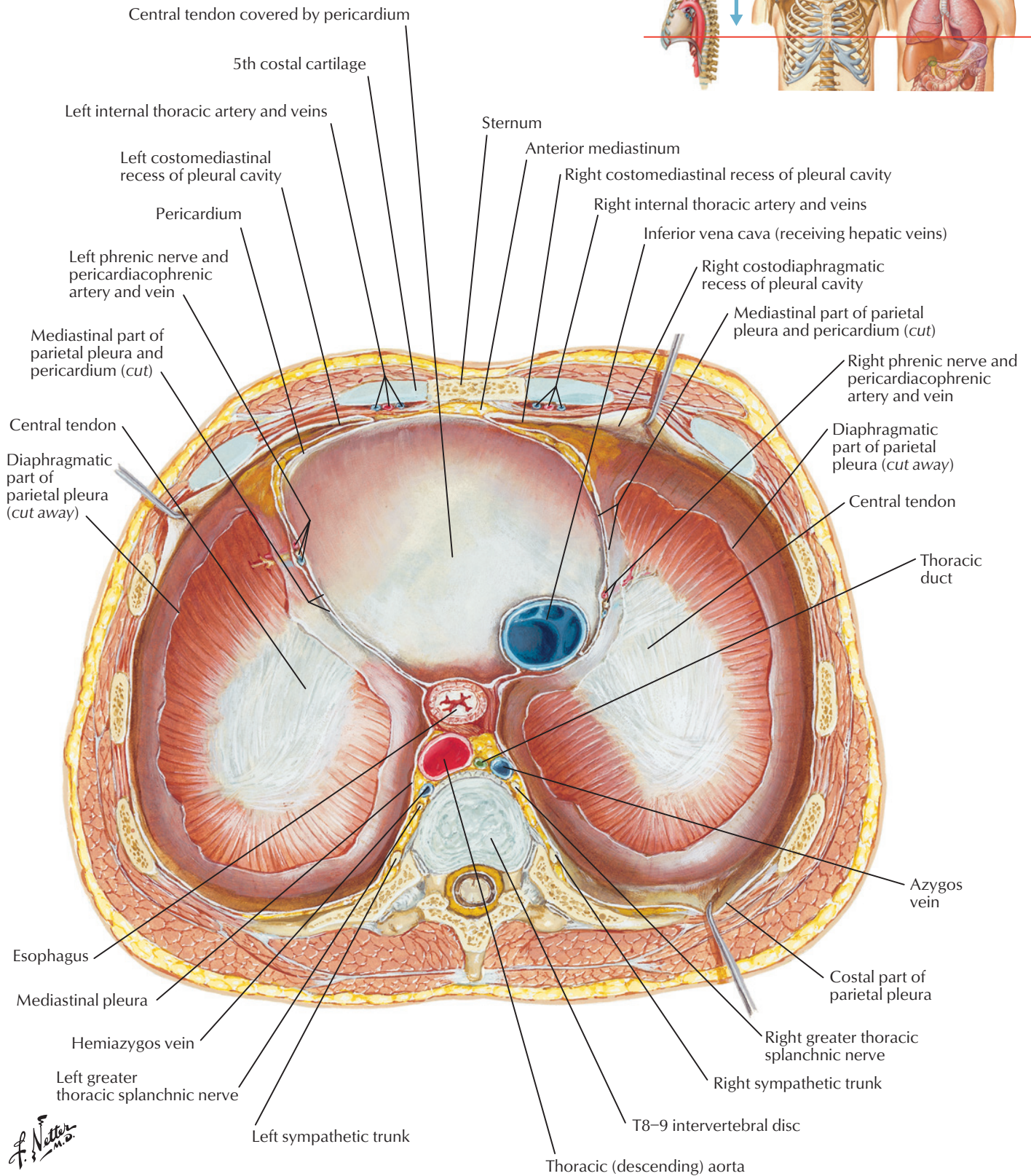
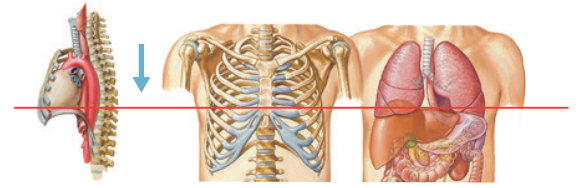


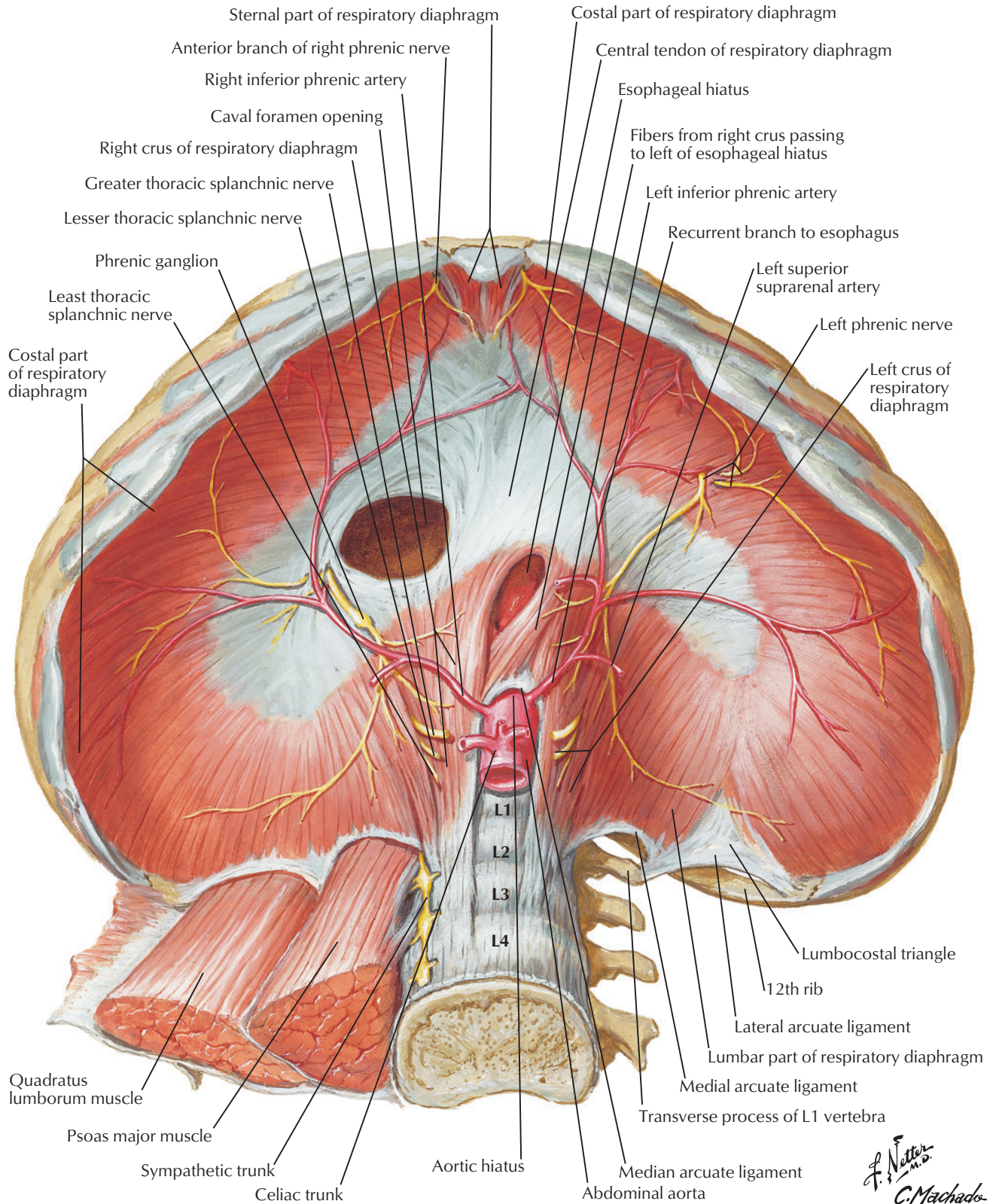
Veins of Internal Thoracic Wall

See also [Plates 234, 241, 259](#)

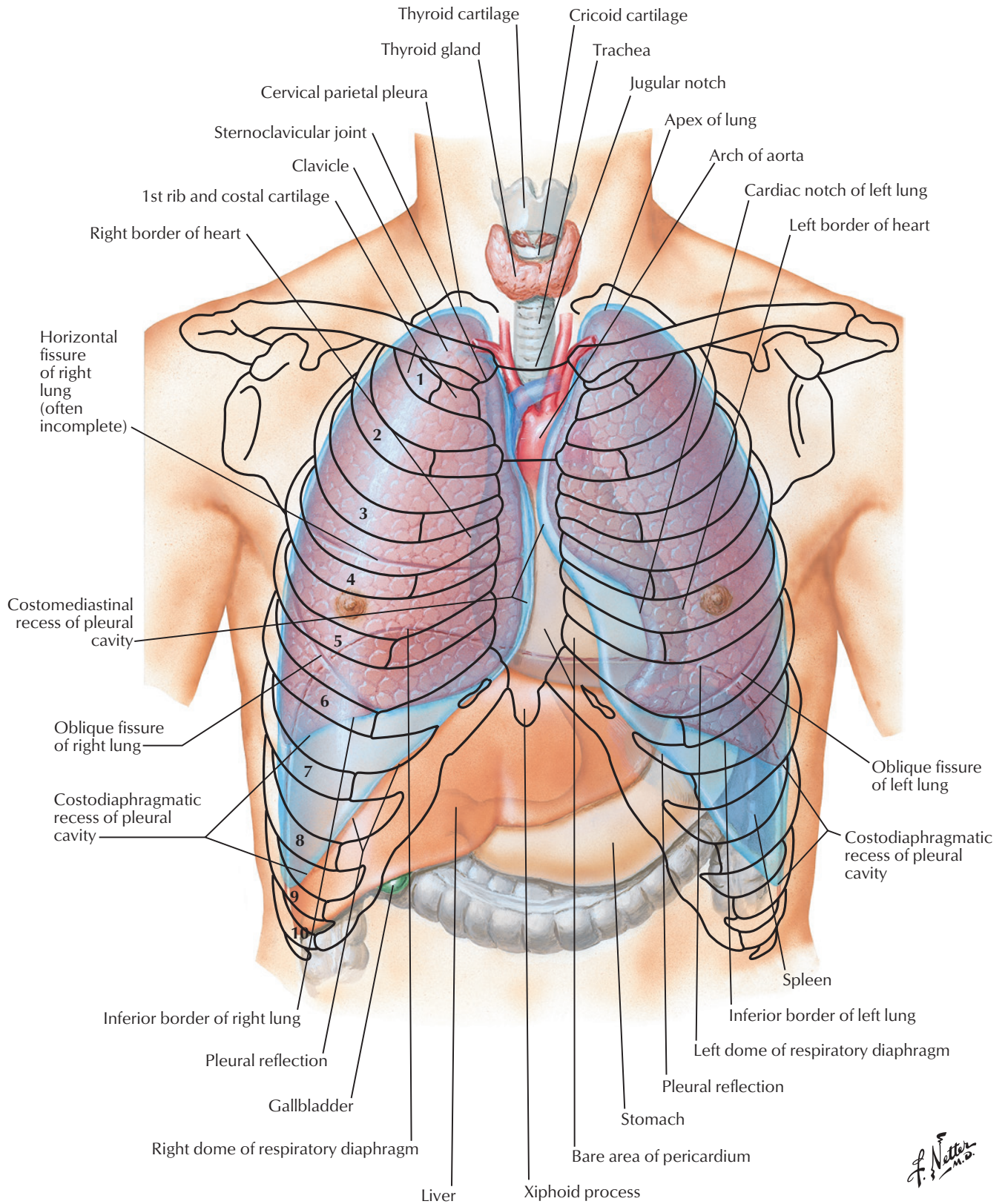


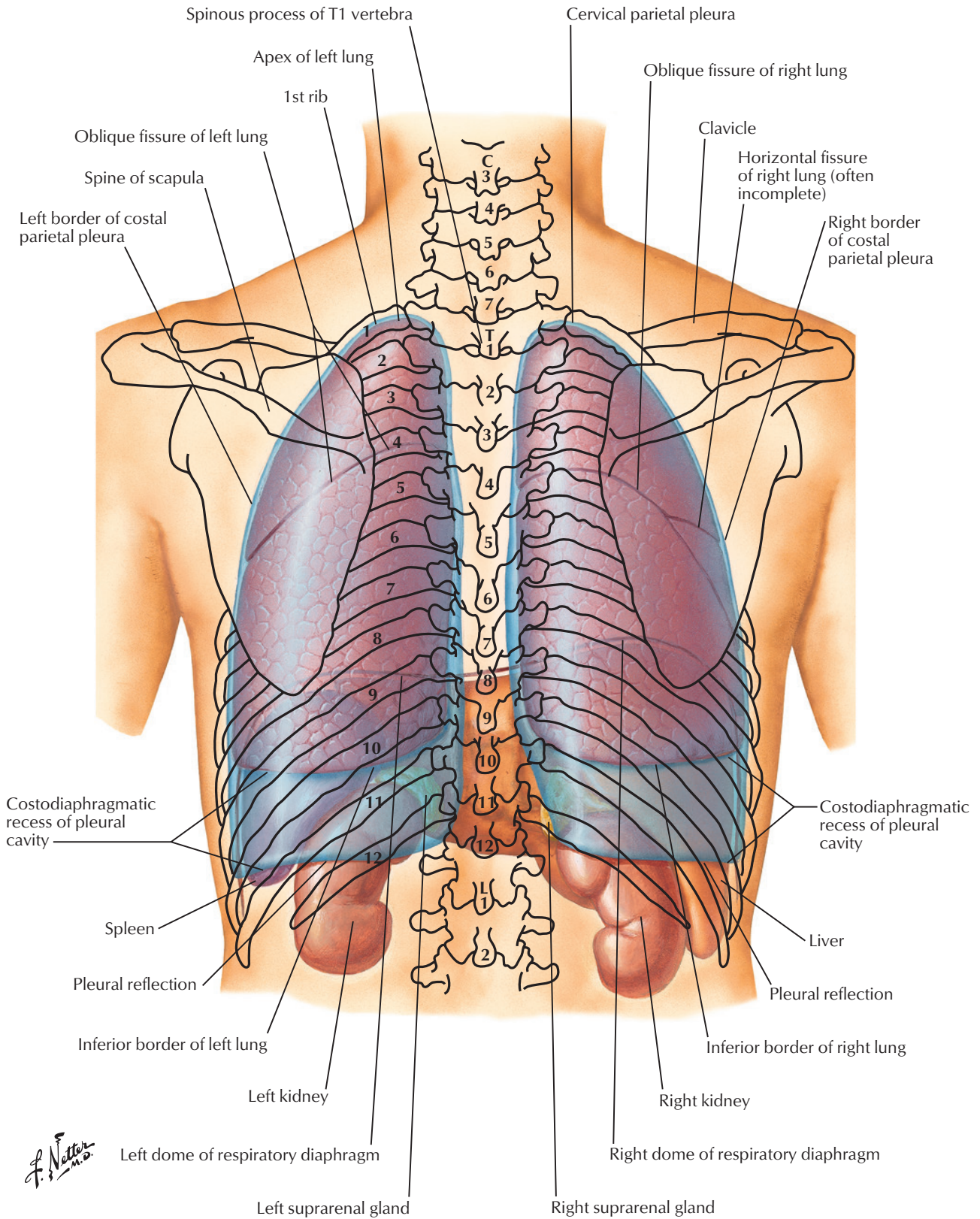




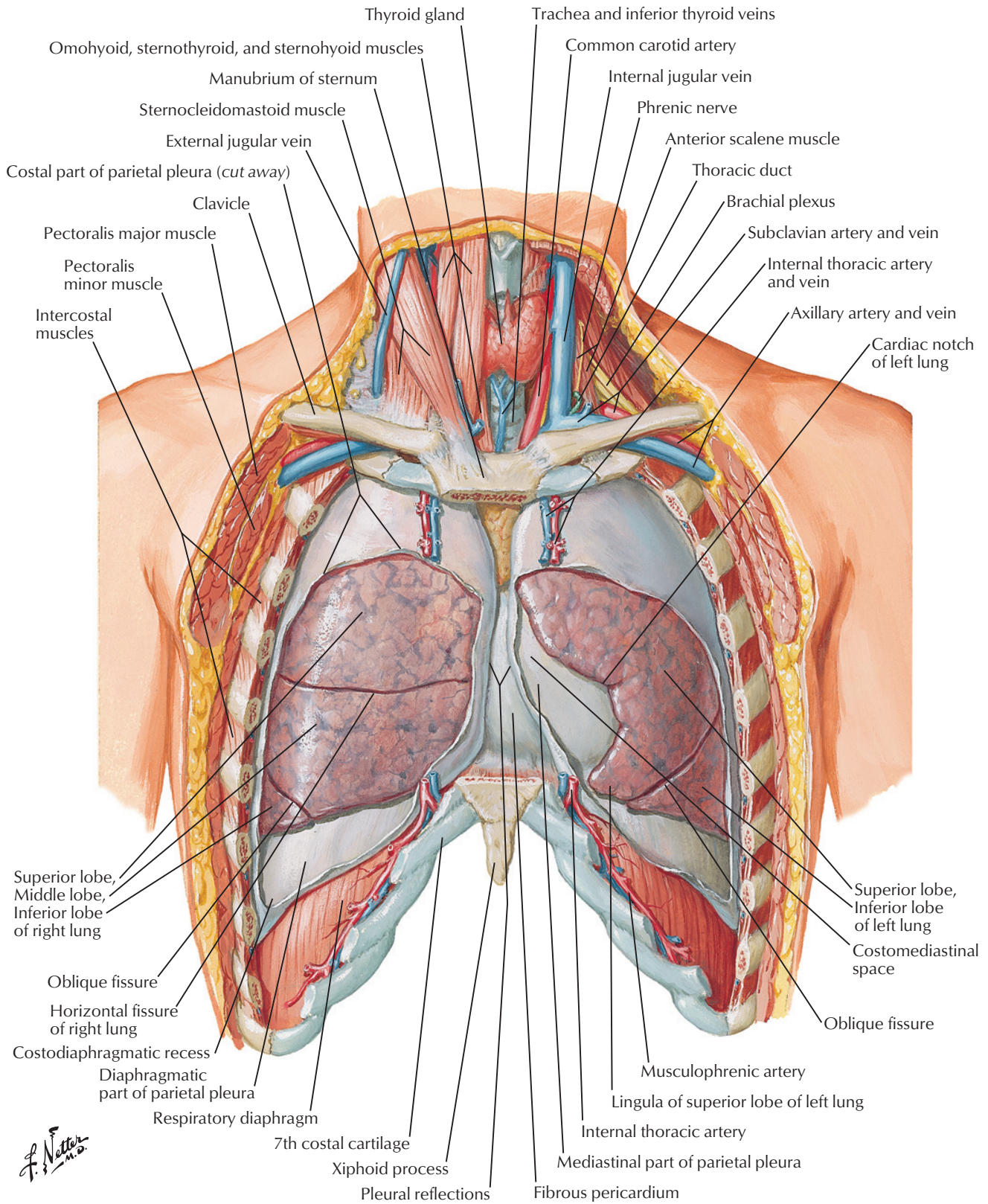


Topography of Lungs: Anterior View

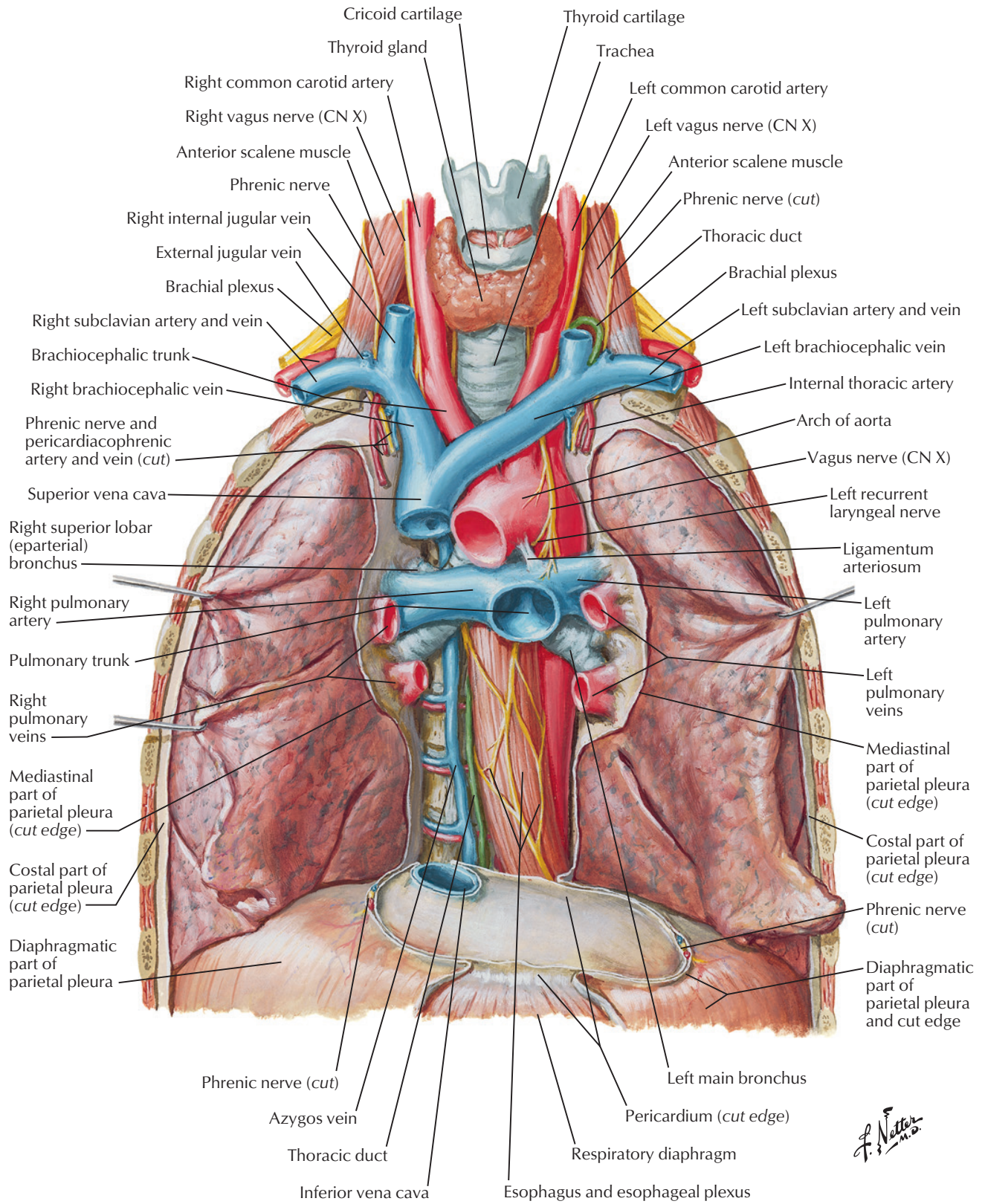


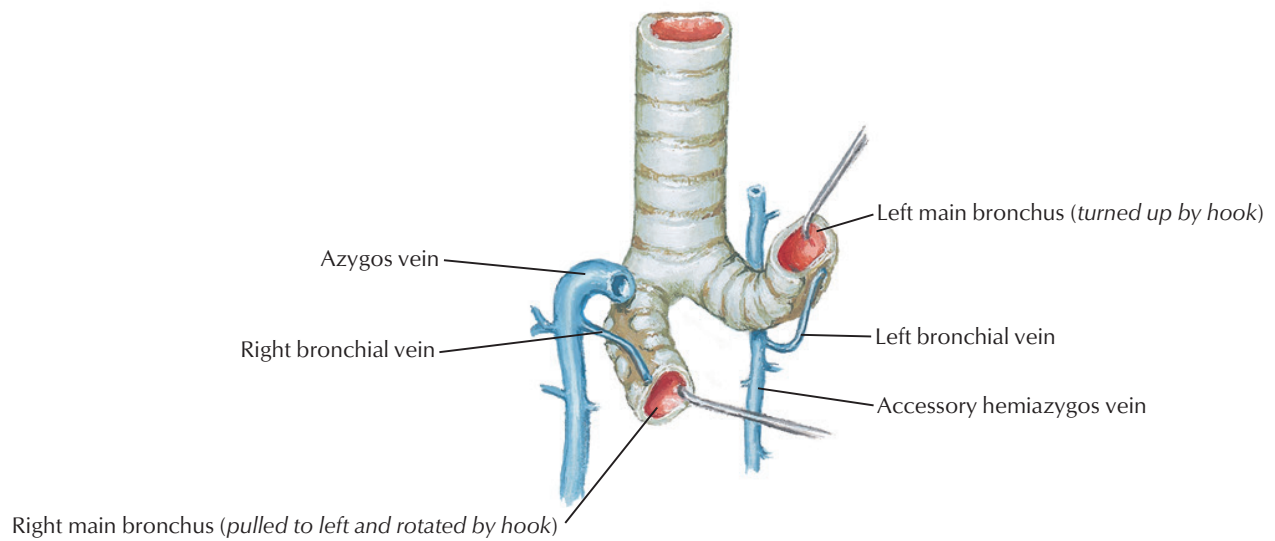
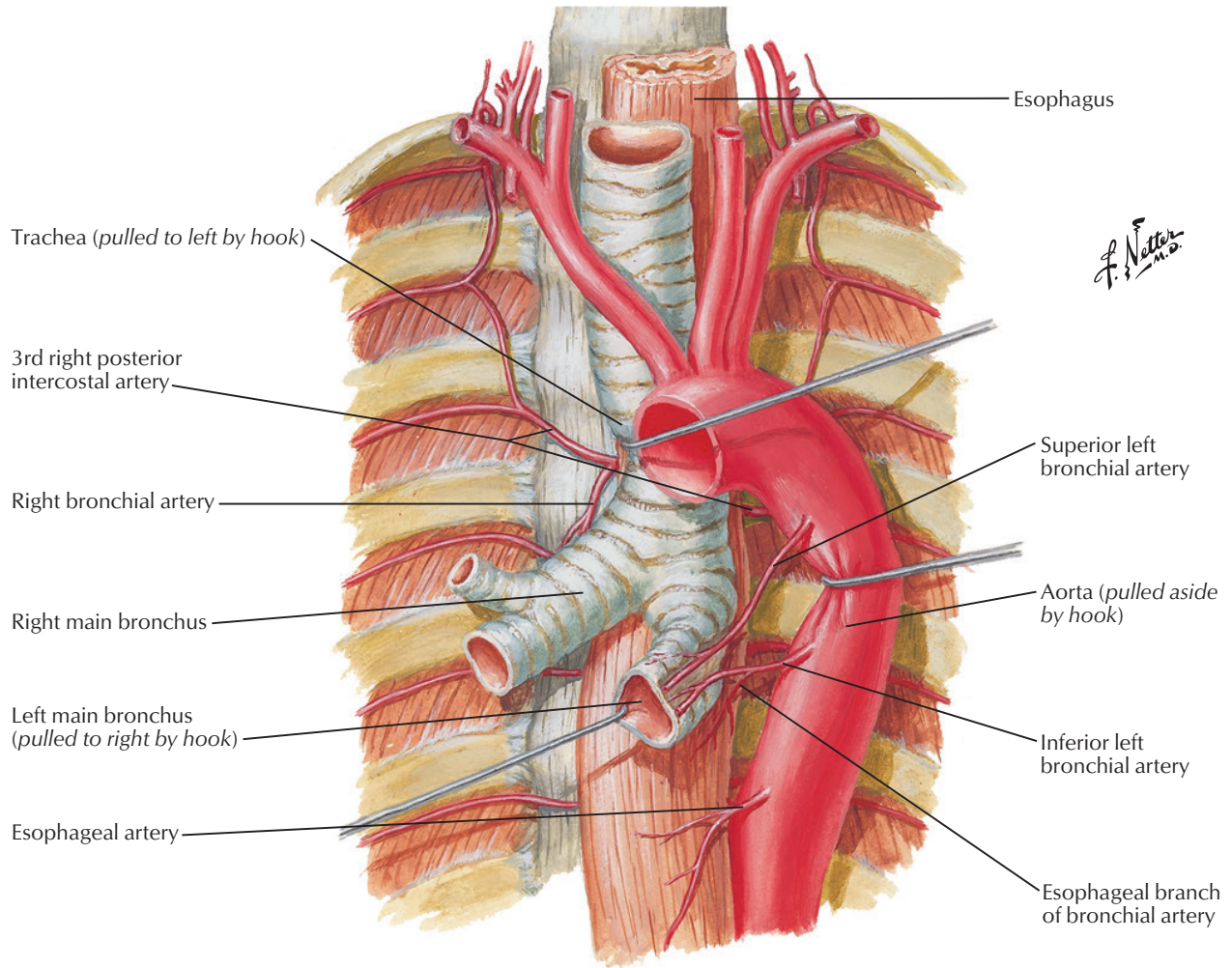


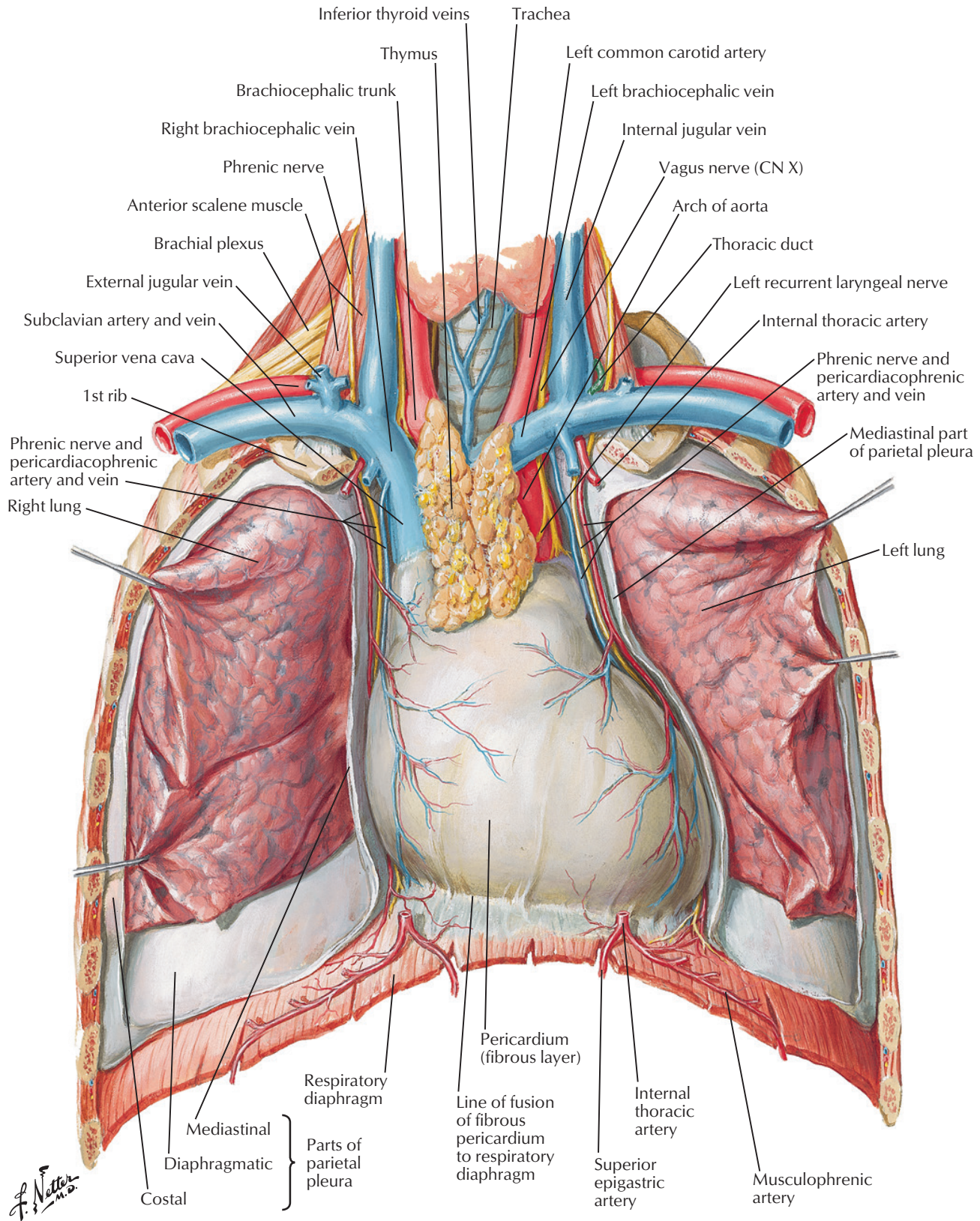
F. Netter M.D.



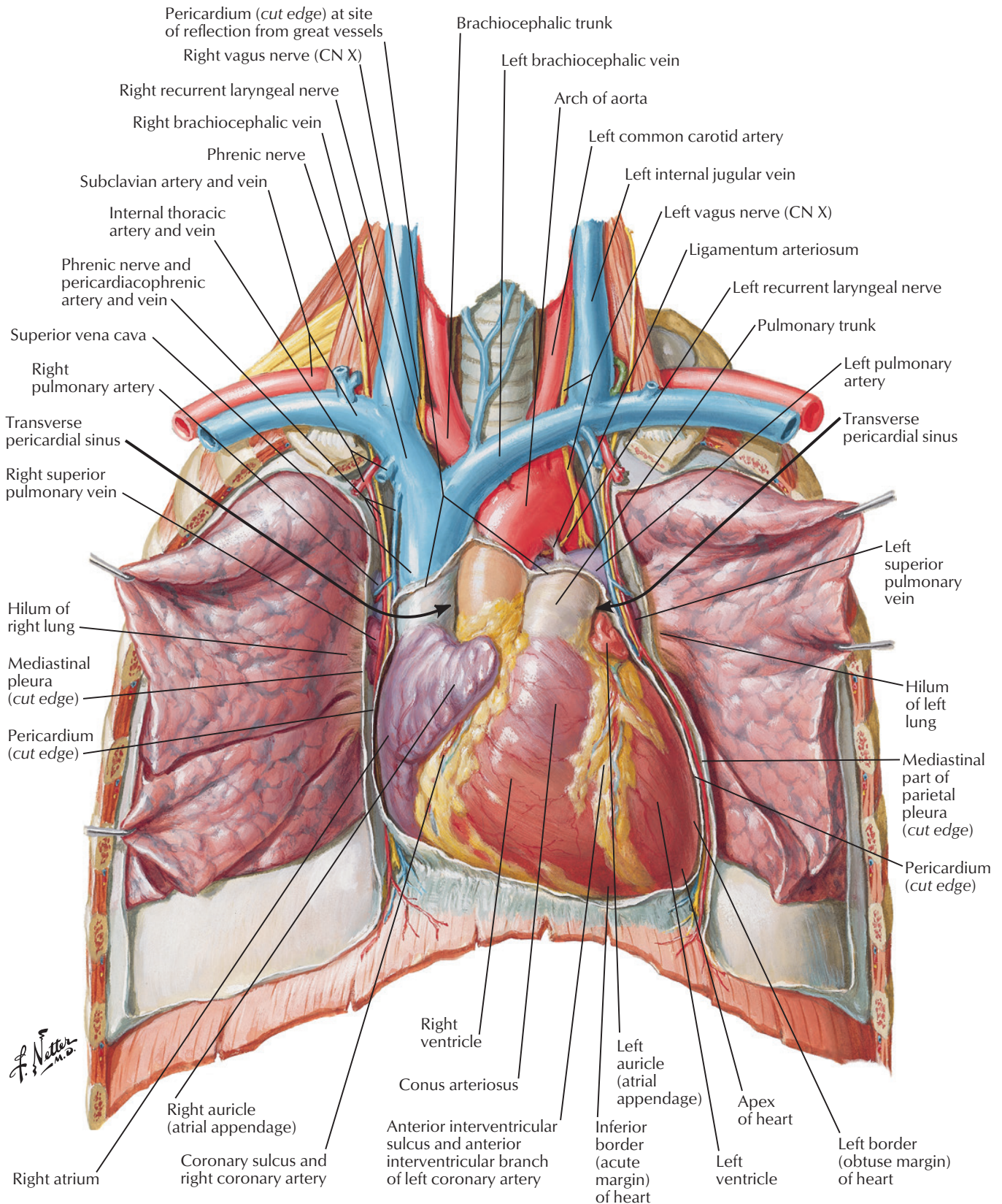
Great Vessels of Superior Mediastinum

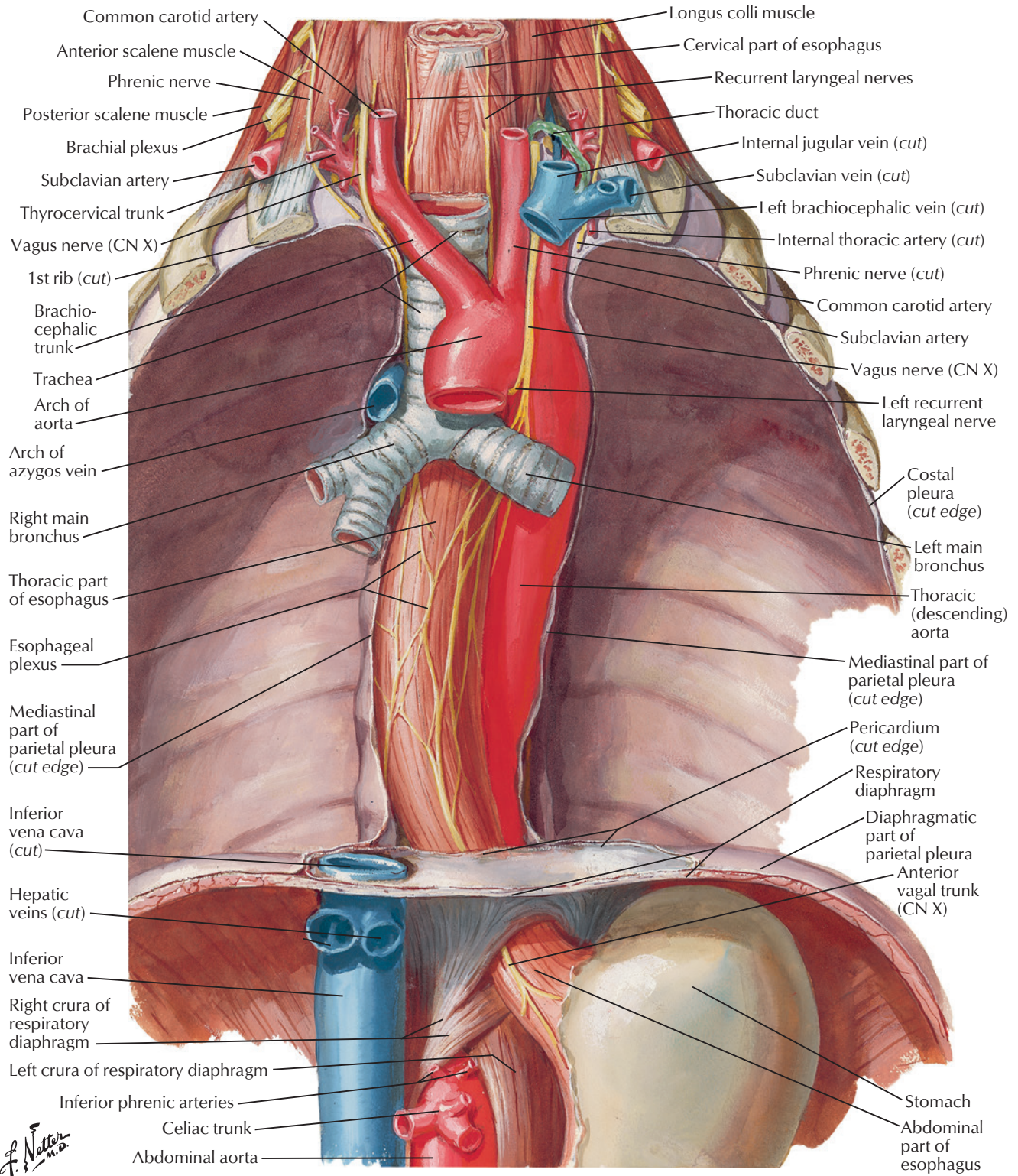


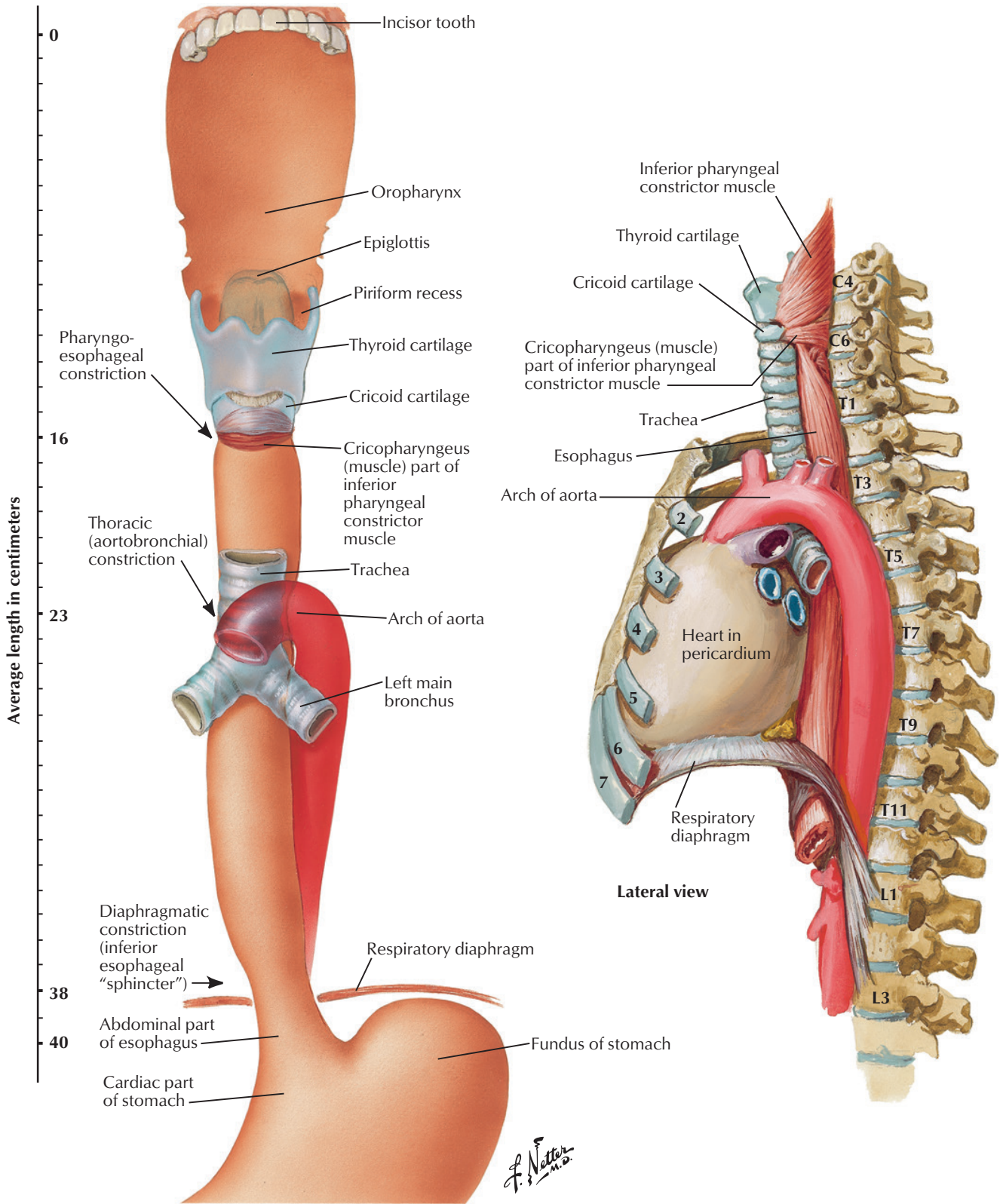




Heart: Anterior Exposure

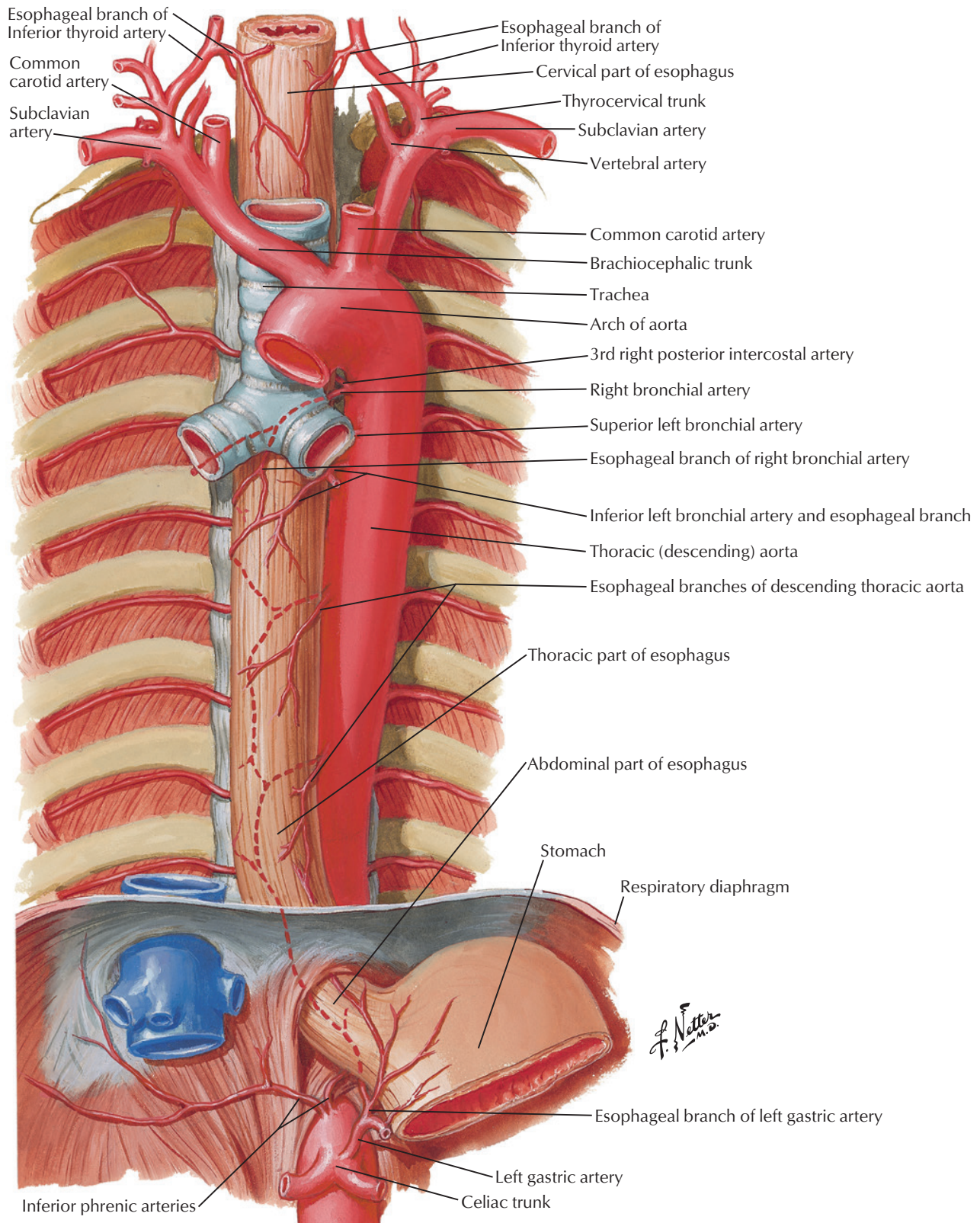


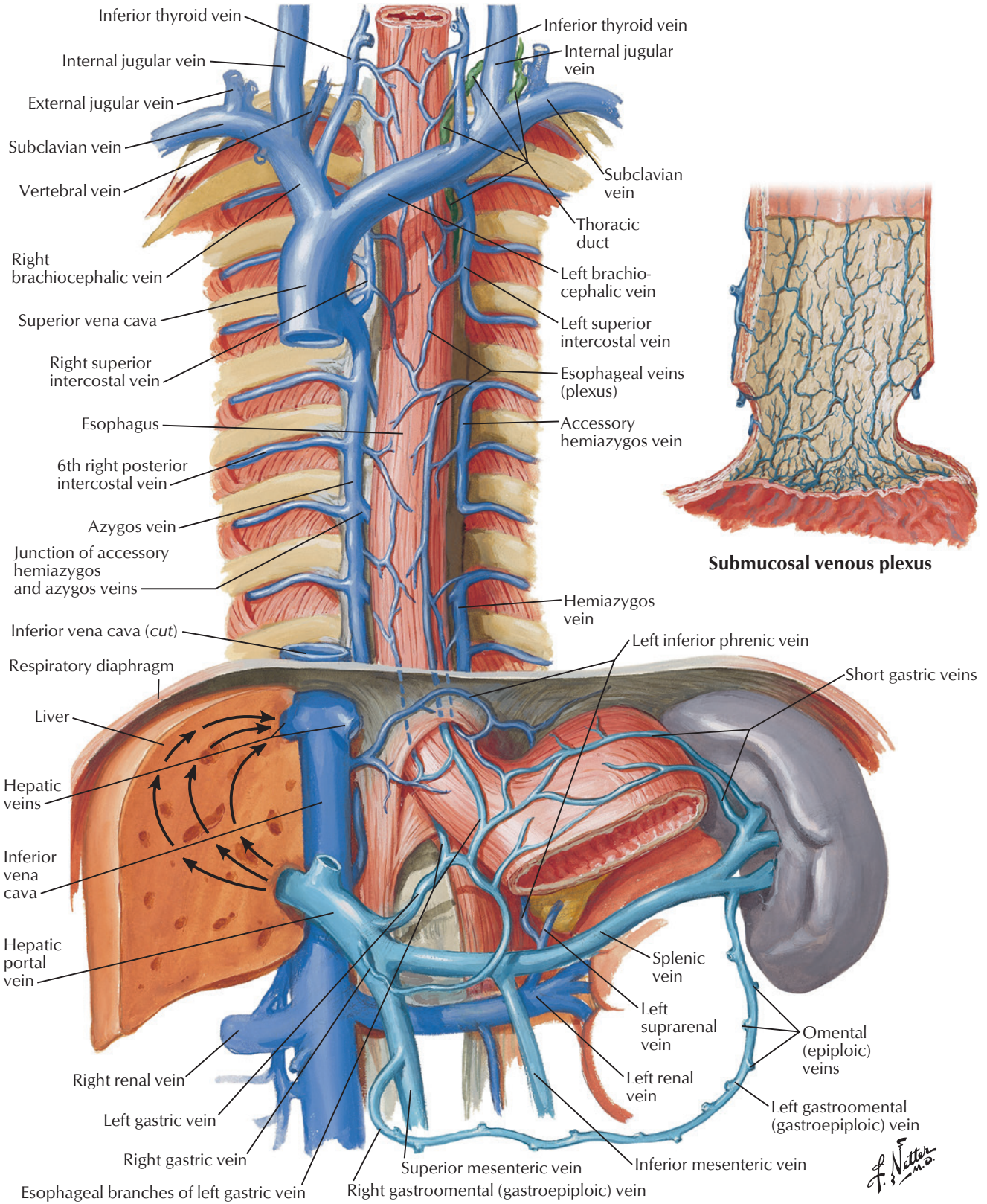




Arteries of Esophagus

See also [Plates 211, 291](#)

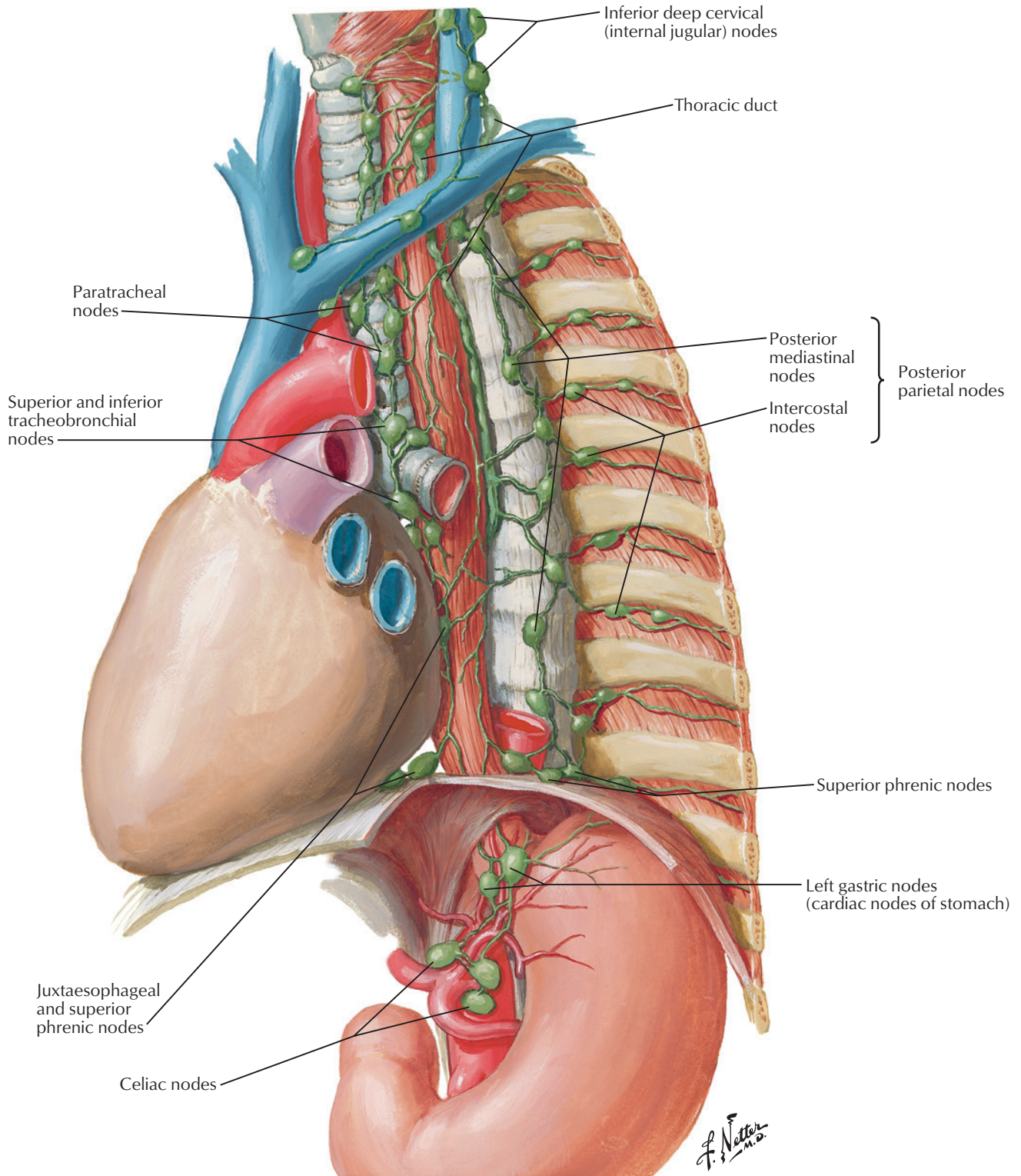




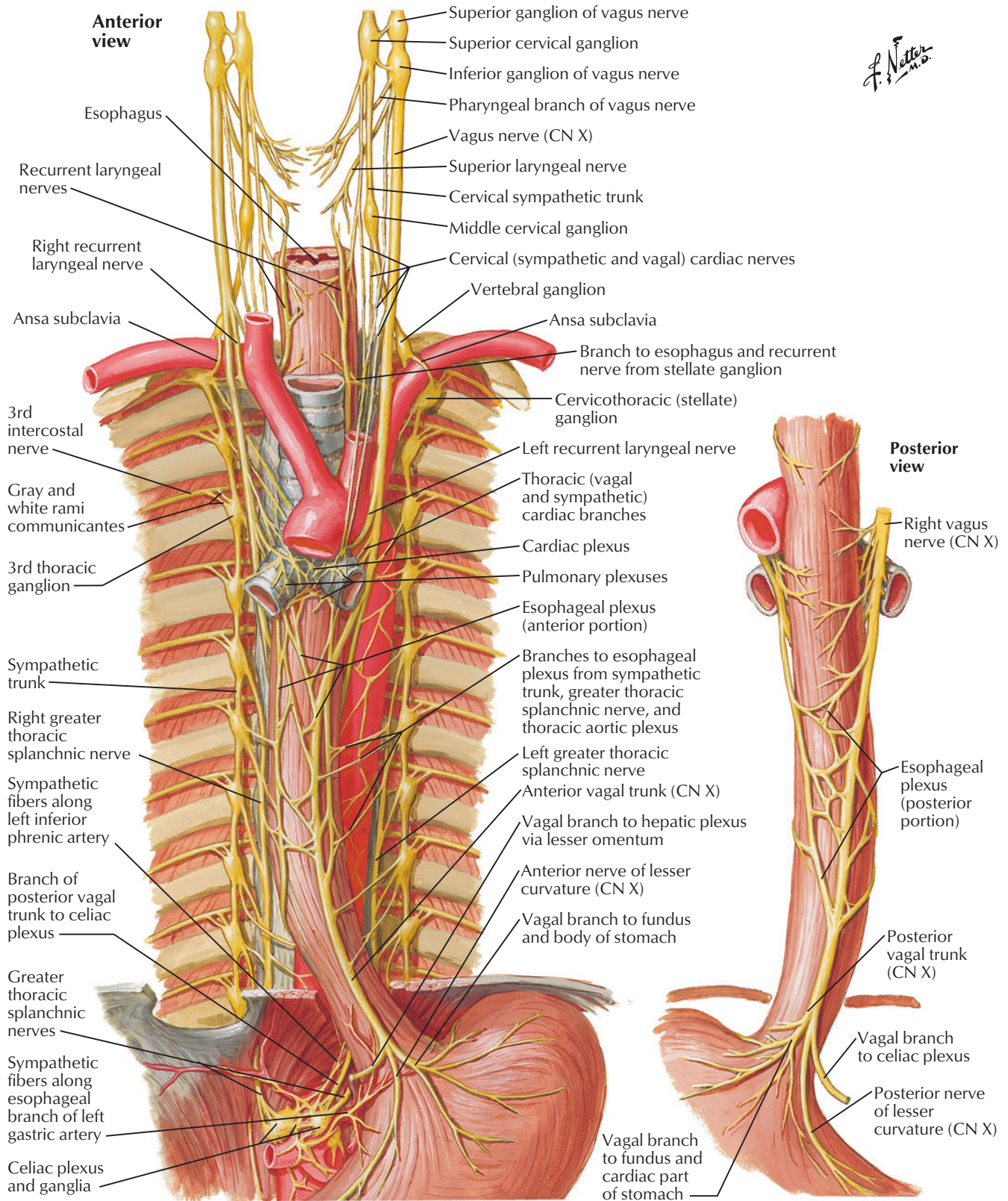
Submucosal venous plexus

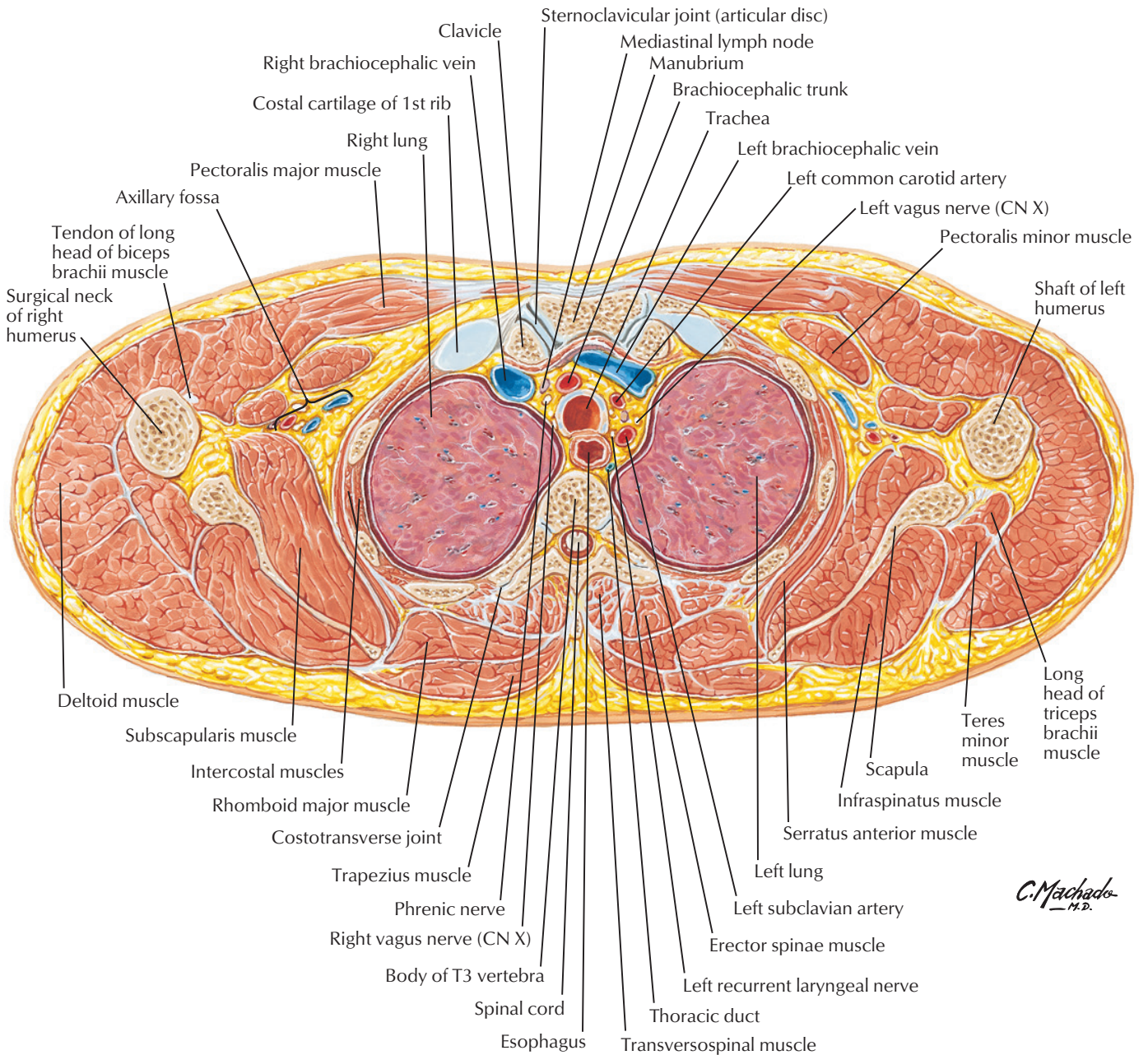
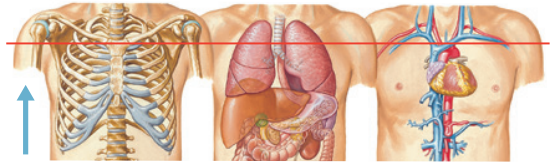
Lymph Vessels and Nodes of Esophagus

See also [Plate 212](#)



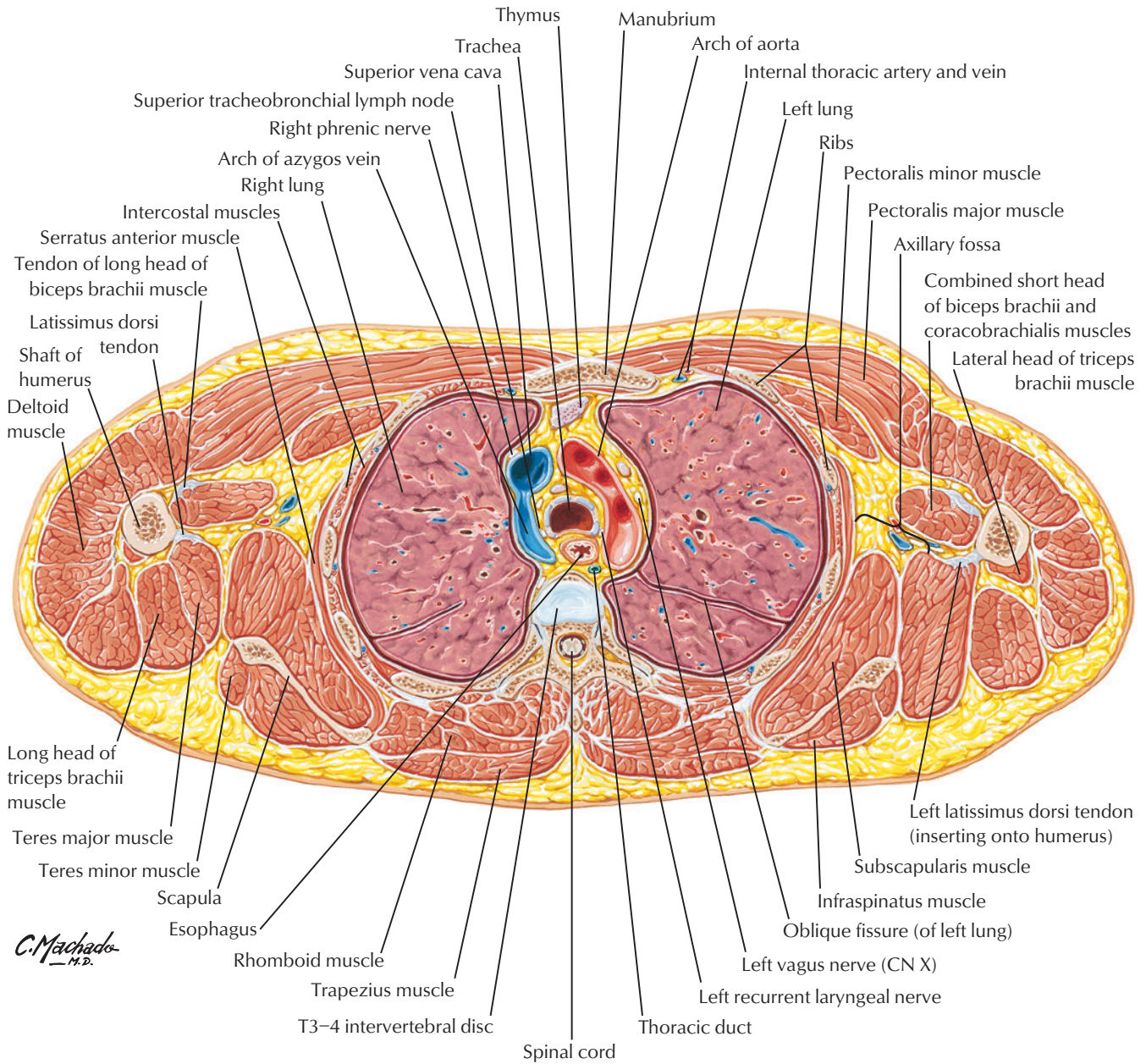
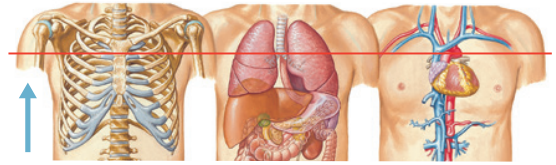
F. Netter M.D.





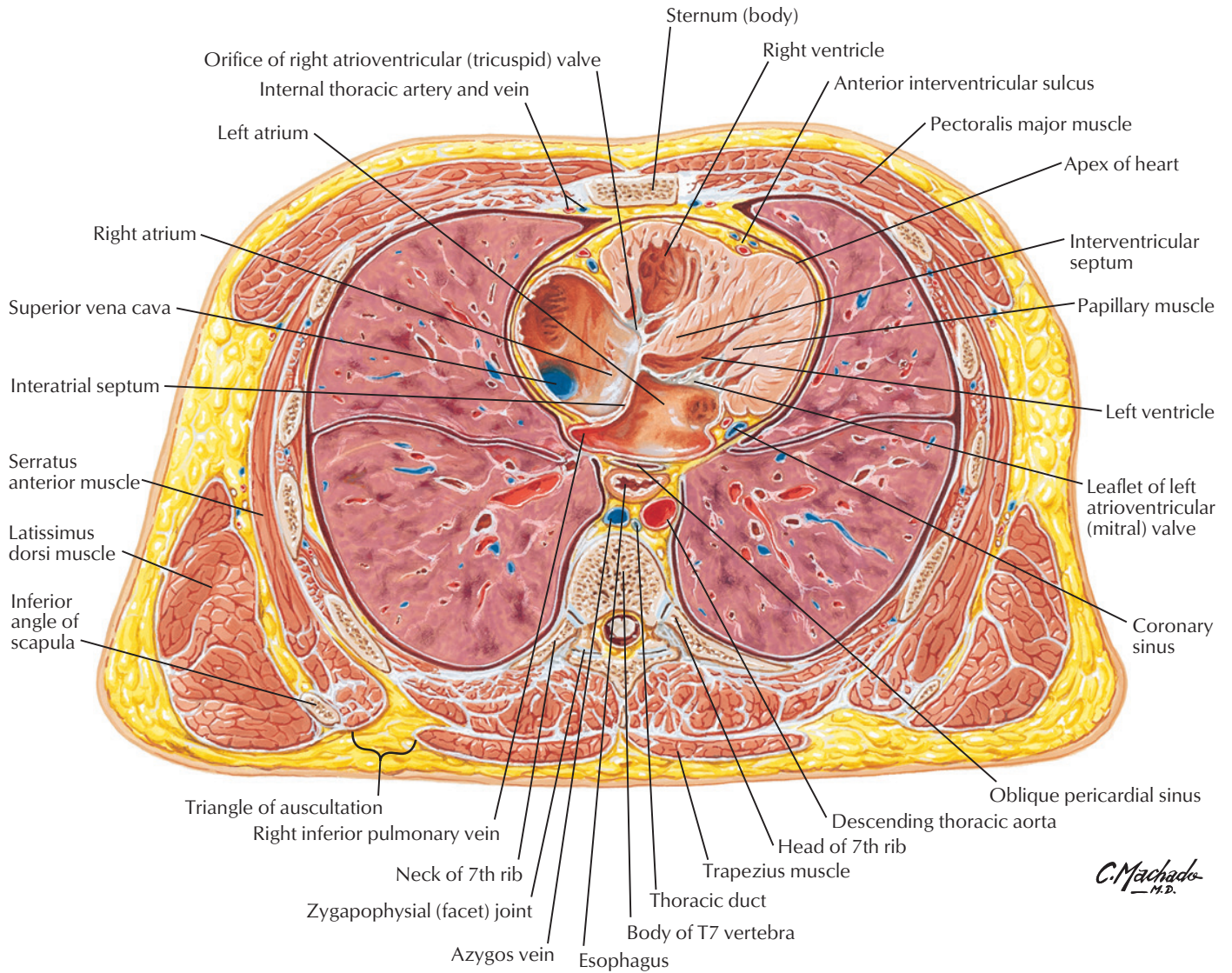
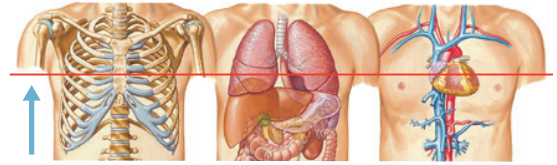
C. Machado
— M.D.

Cross Section of Thorax at T3-4 Disc Level

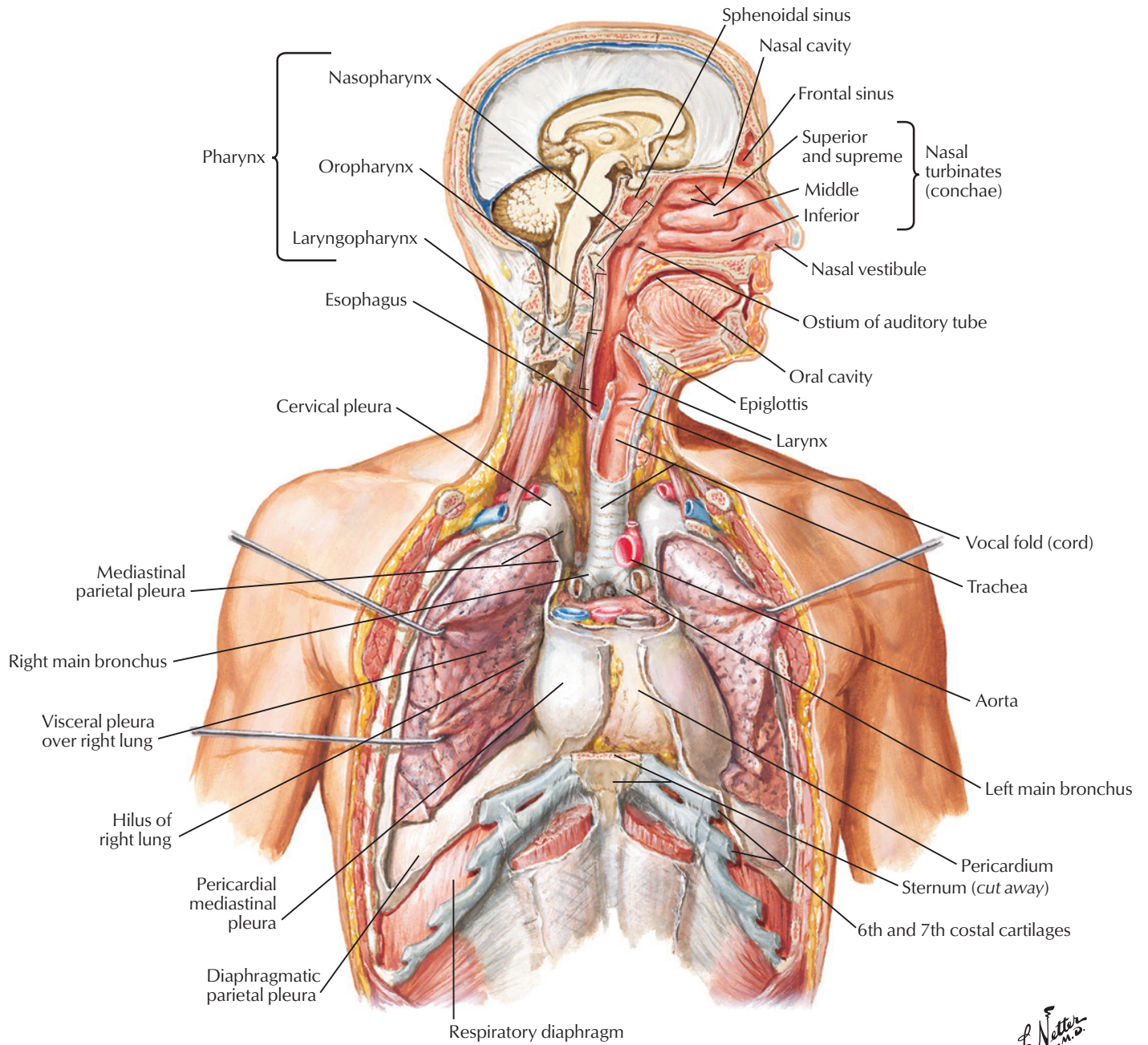


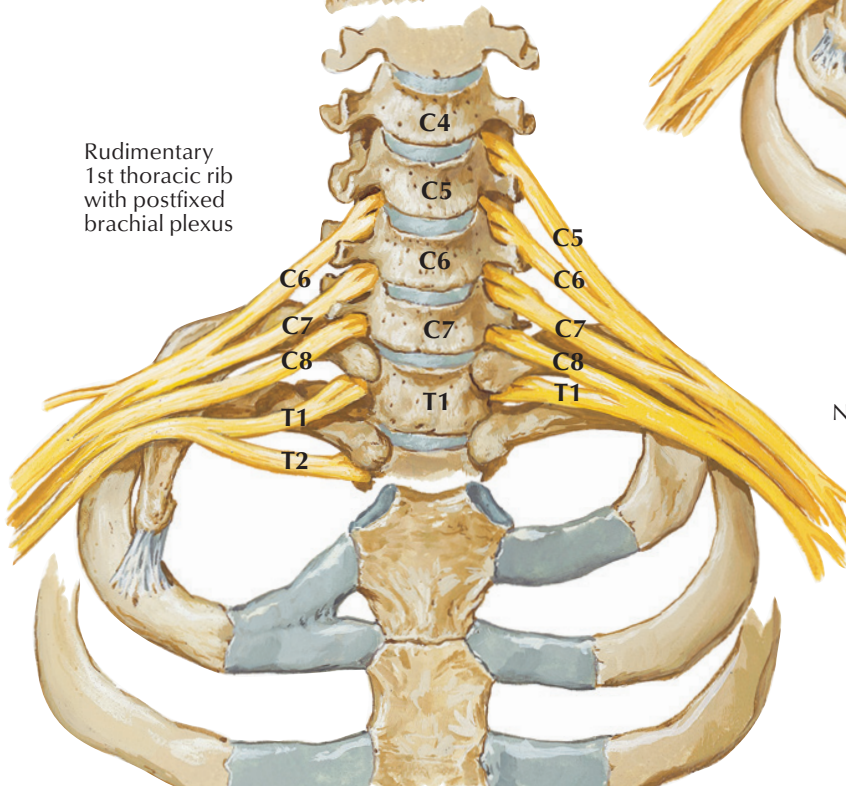
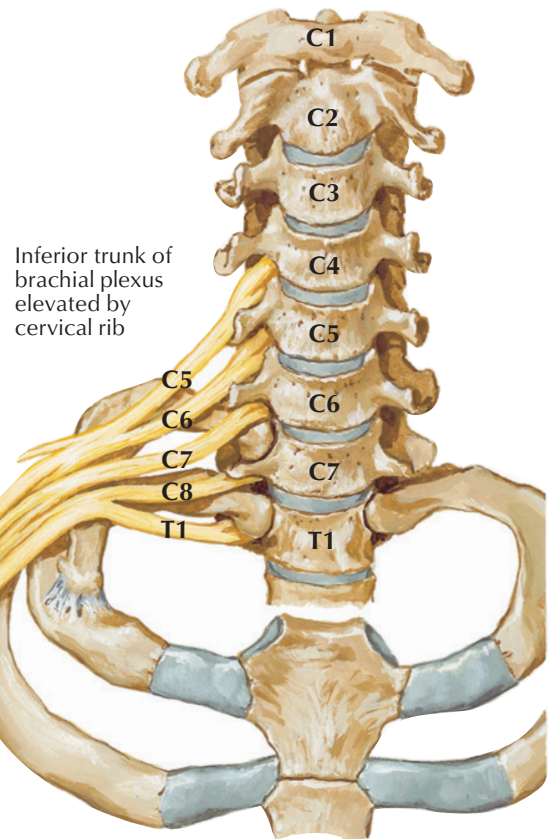
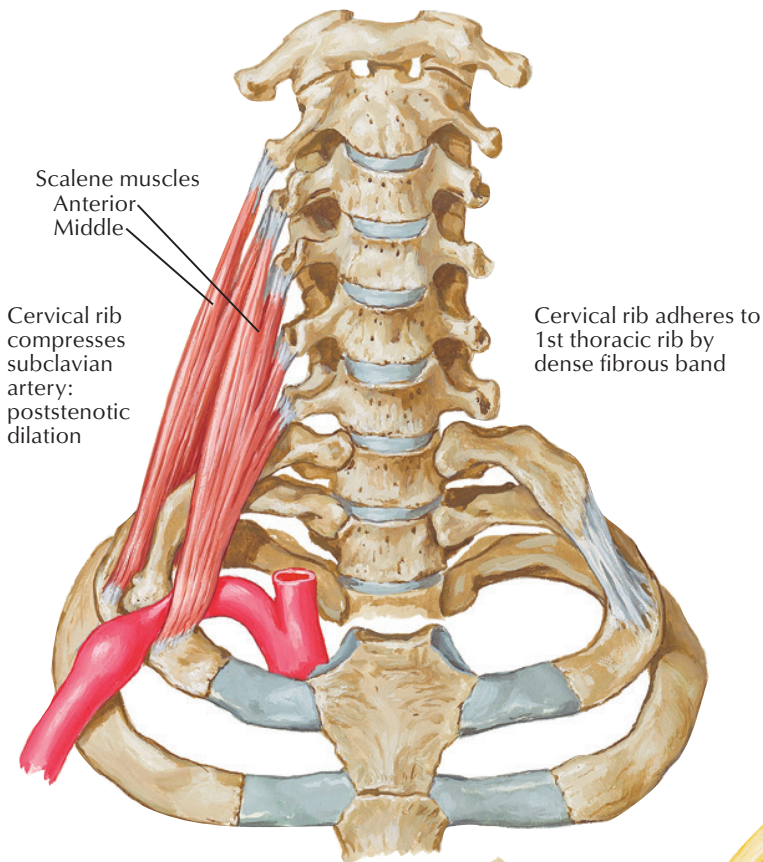
C. Machado M.D.

Cross Section of Thorax at T7 Level



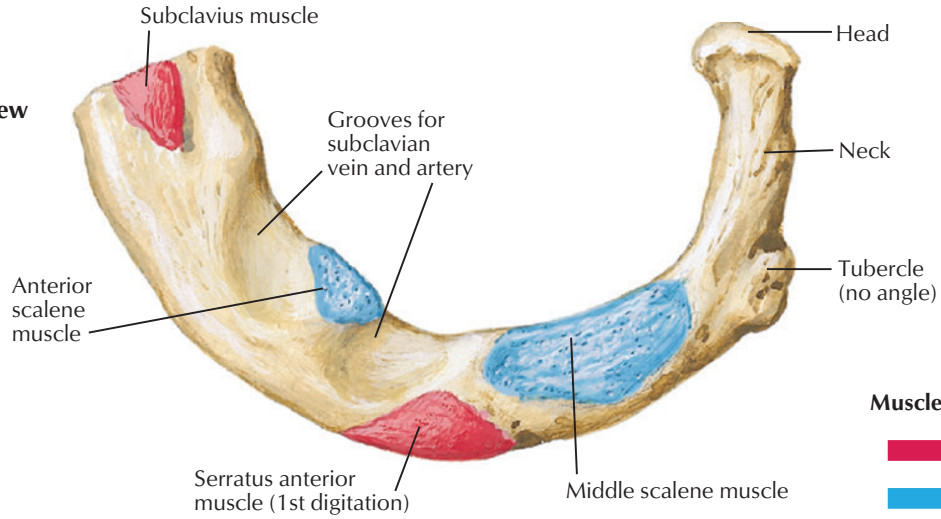
C. Machado M.D.



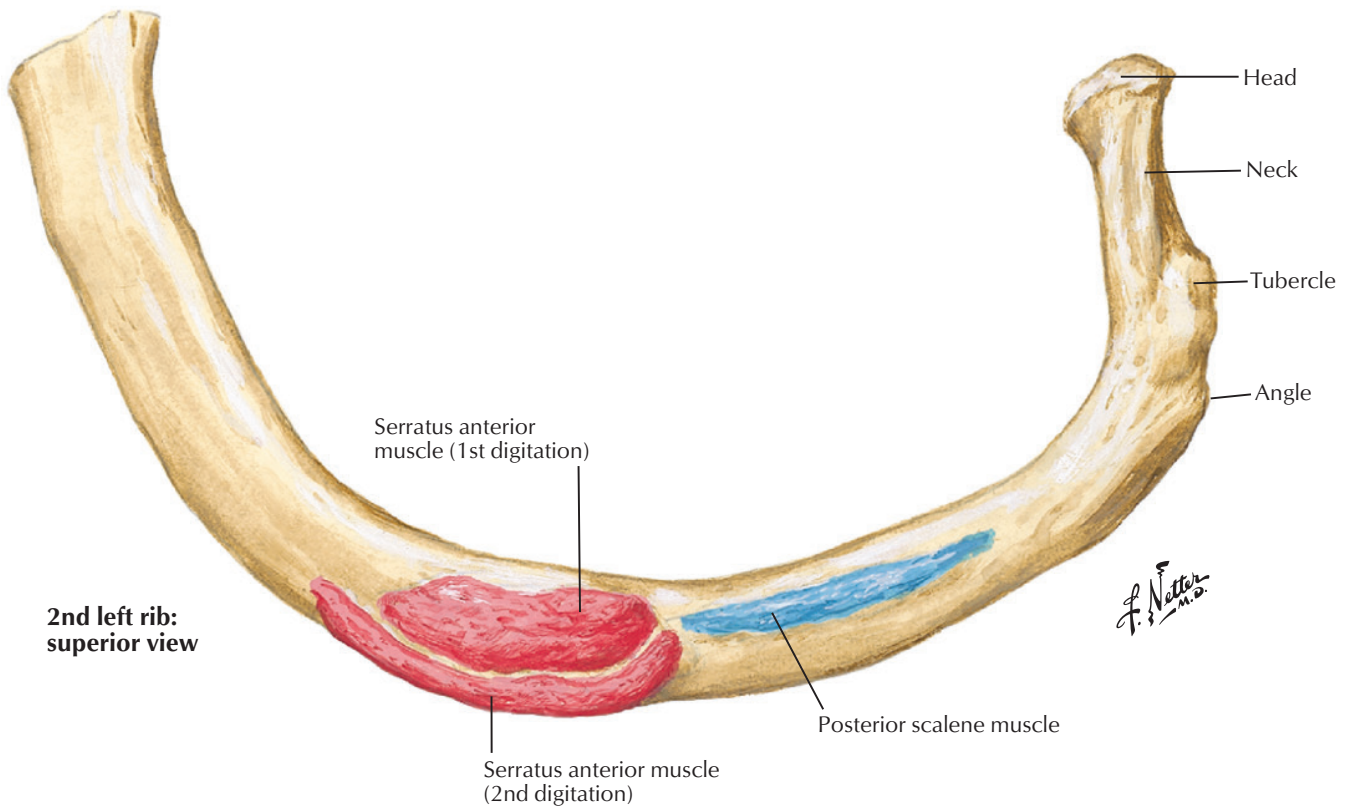


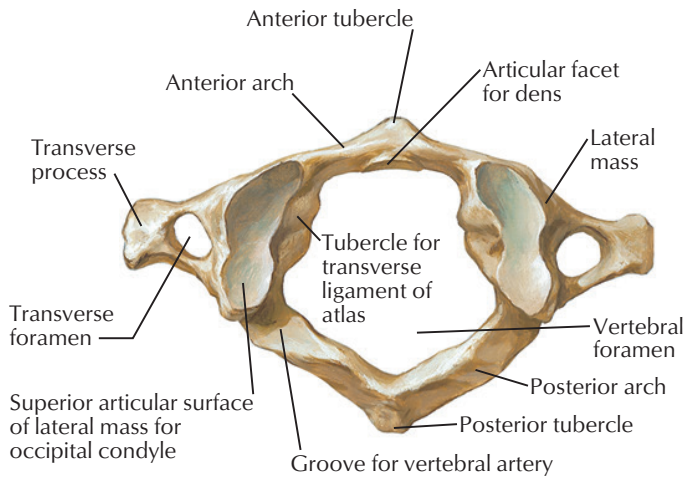
Normal morphology

1st left rib:
superior view

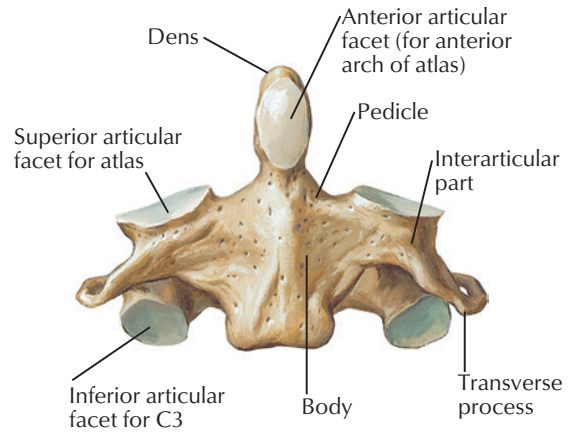


2nd left rib:
superior view

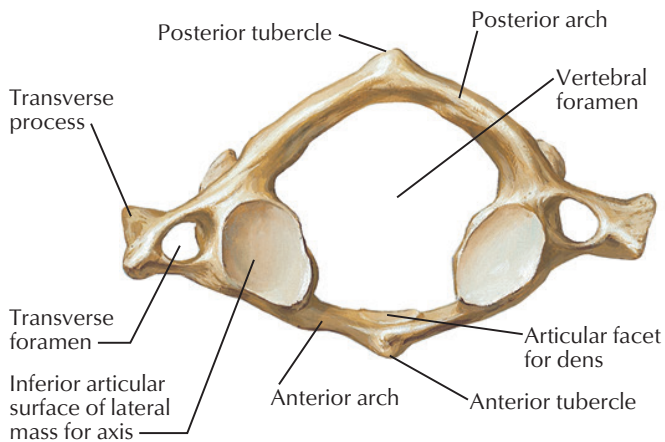




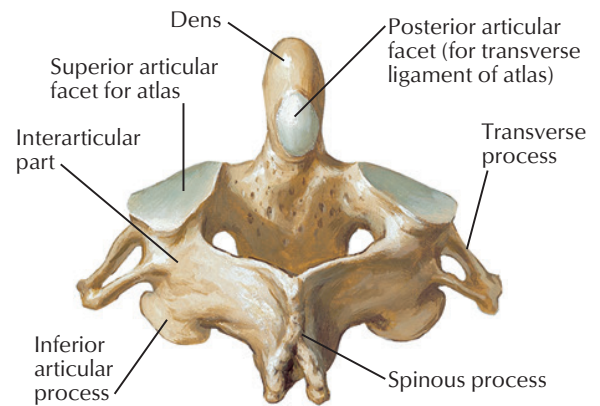
Atlas (C1): superior view



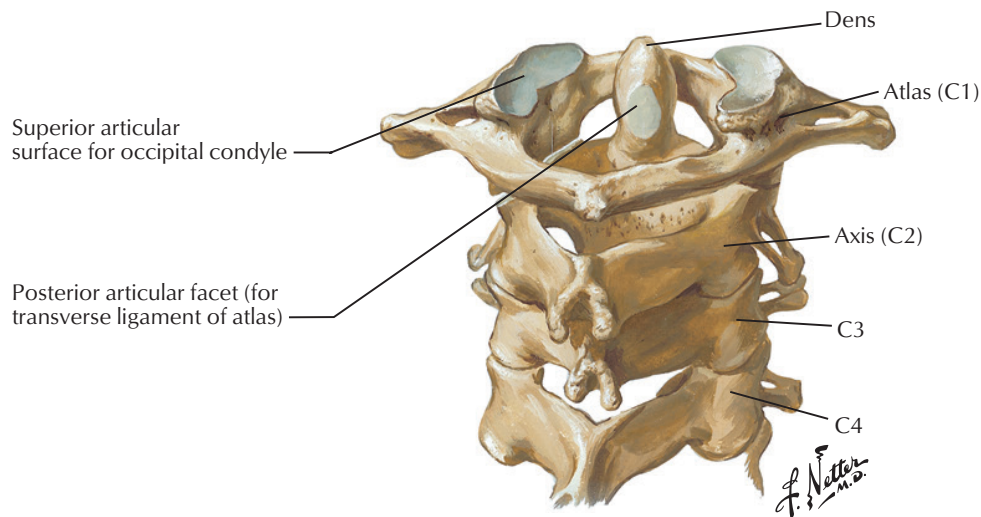
Axis (C2): anterior view



Atlas (C1): inferior view

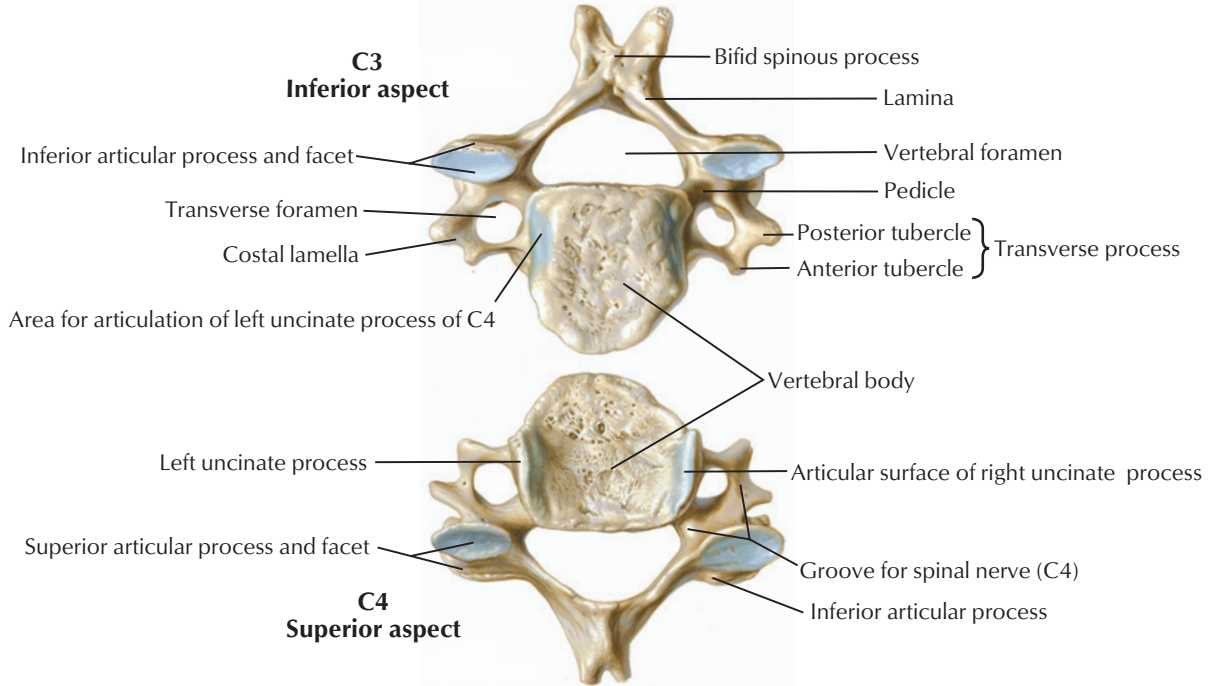


Axis (C2): posterosuperior view

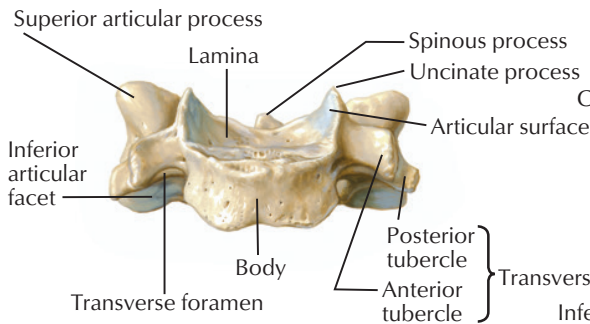


Upper cervical vertebrae, assembled: posterosuperior view

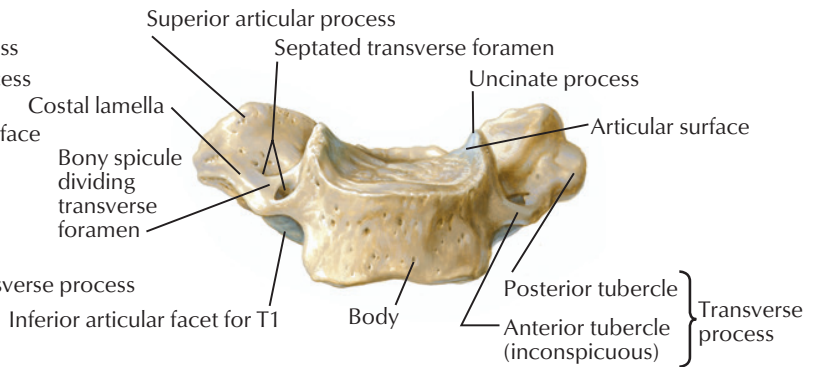
Inferior aspect of C3 and superior aspect of C4 showing the sites of the facet and uncovertebral articulations



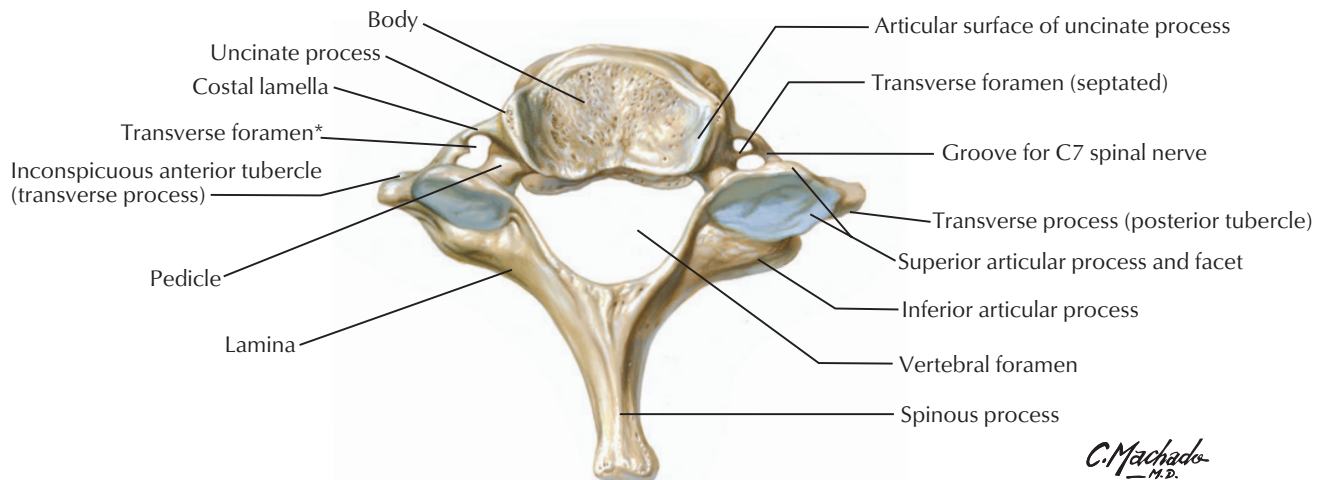
4th cervical vertebra: anterior view



7th cervical vertebra: anterior view

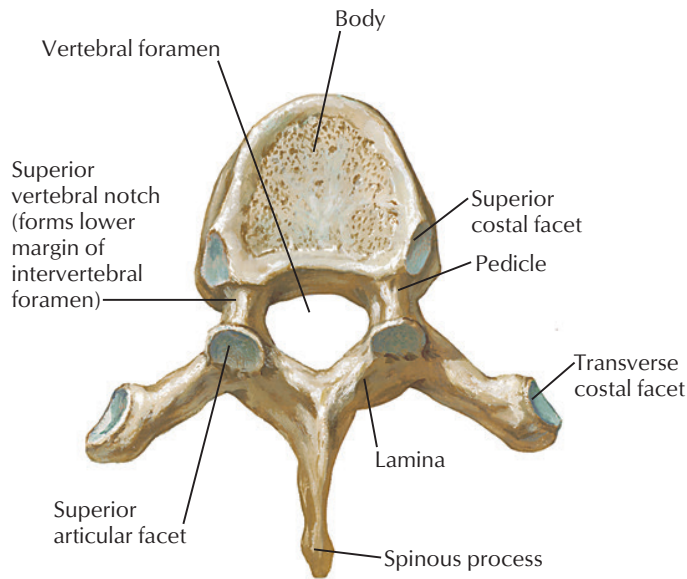


7th cervical vertebra (vertebra prominens): superior view

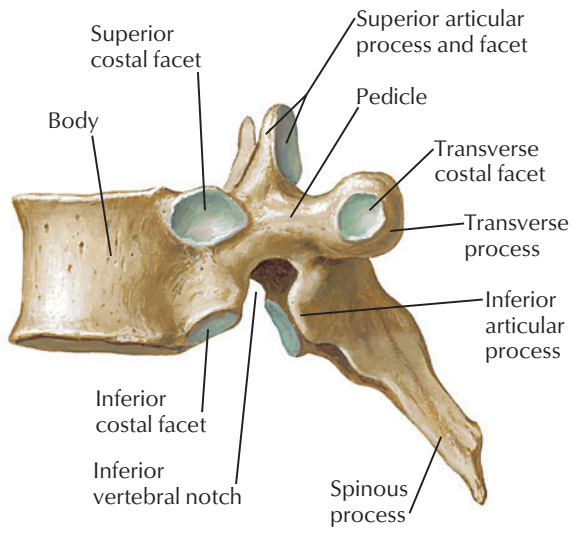


C. Machado M.D.

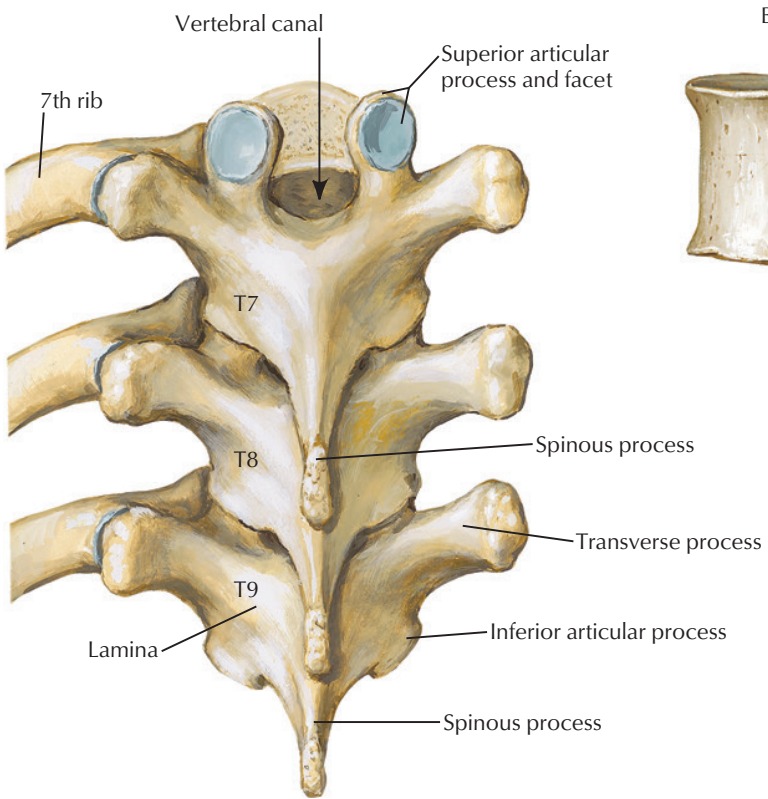
*The foramina transversaria of C7 transmit vertebral veins, but usually not the vertebral artery, and are asymmetrical in this specimen.



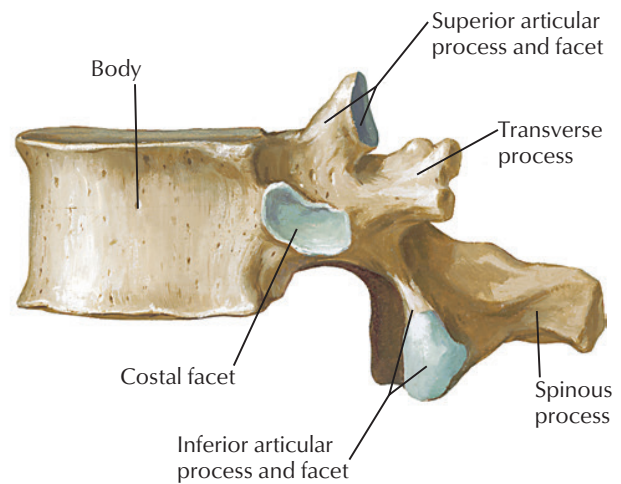
**T6 vertebra:
superior view**



**T6 vertebra:
lateral view**

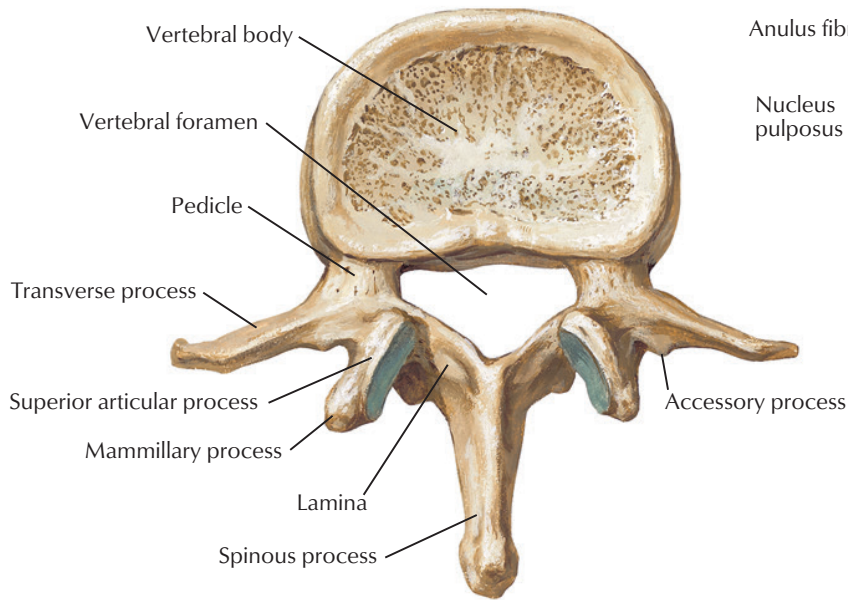


**T7, T8, and T9 vertebrae:
posterior view**

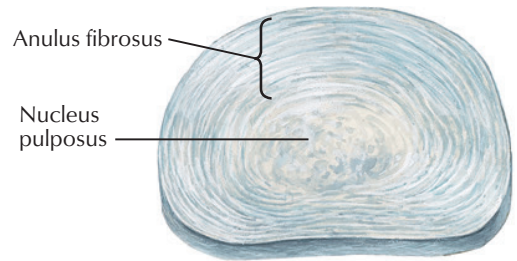


**T12 vertebra:
lateral view**

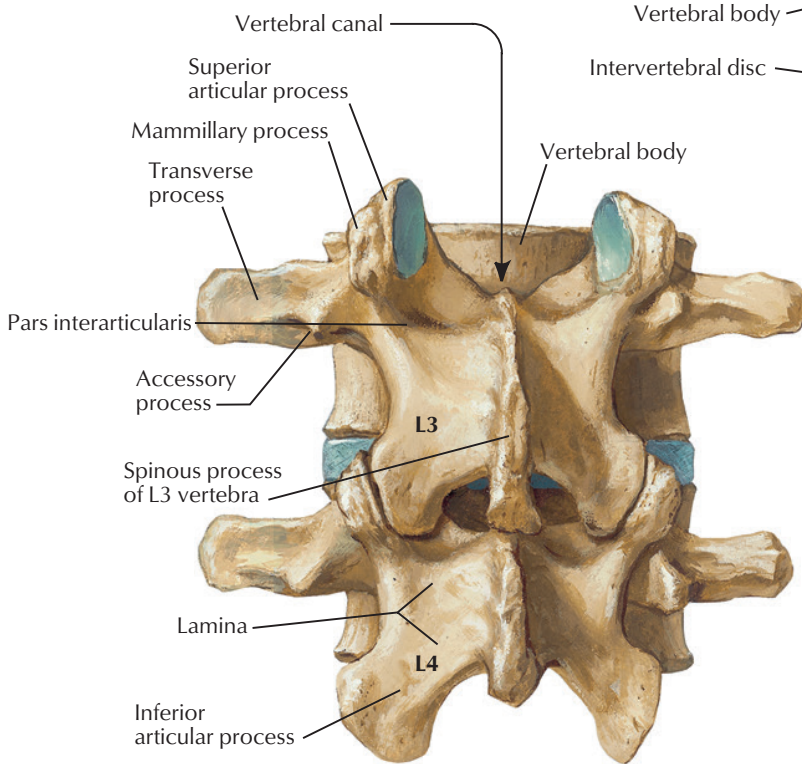
F. Netter M.D.



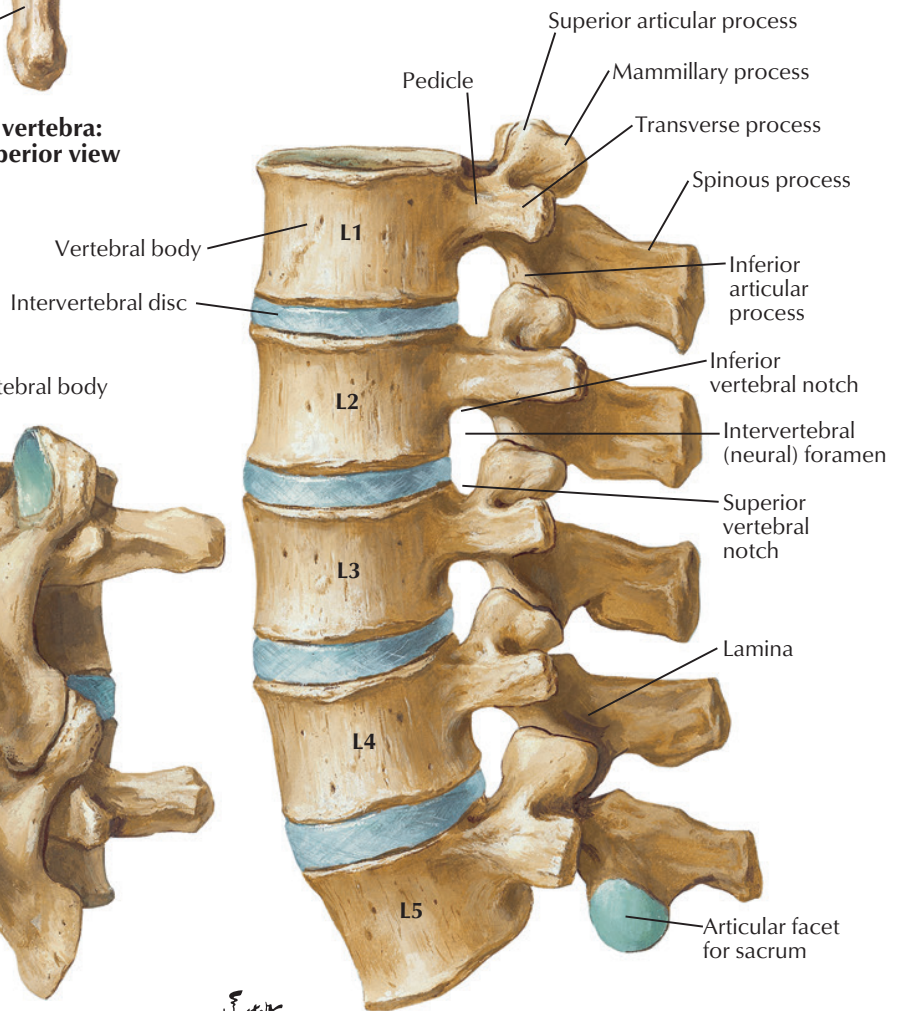
**L2 vertebra:
superior view**



Intervertebral disc



**L3 and L4 vertebrae:
posterior view**



**Lumbar vertebrae, articulated:
left lateral view**

F. Netter M.D.