

1. Tricuspid opening:

lower Ant./3 fingers

2. Rough Ant part:-

* Opening of Ant. cardiac V.

* Crista terminalis →

- Vertical Muscular ridge
- SVC ↔ IVC
- Sulcus terminalis * Out *

* Musculae pectinate →

- Transverse muscular ridge
- Crista terminalis ← Ant. wall of rt atrium

3. Smooth Post part:-

* Open of SVC 3 C.C

* Open of IVC 6 C.C

* Open of Coronary sinus

tricuspid ↔ Valve of IVC

* Venae cordis minimi

* Fossa ovalis (interatrial septum)

* Anulus ovalis

1. Mitral opening 2 finger

2. Rough Ant only the auricle

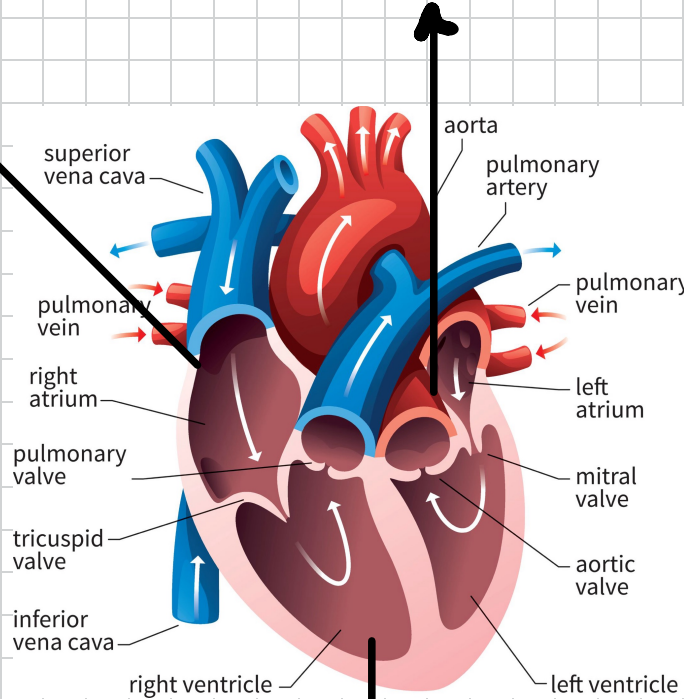
3. Smooth post 4 pulmonary vein

Heart Internal Features

1. Mitral / Aortic

2. Smooth outflow Aortic Vestibule

3. Rough inflow * trabeculae carneae
* Moderator band X
* Papillary muscle #2



1. Tricuspid / Pulmonary Opening

2. Smooth outflow Infundibulum

3. Rough inflow * trabeculae carneae

* Moderator band prevent over distention
* Papillary muscle → #3

→ prevent Valve regurge