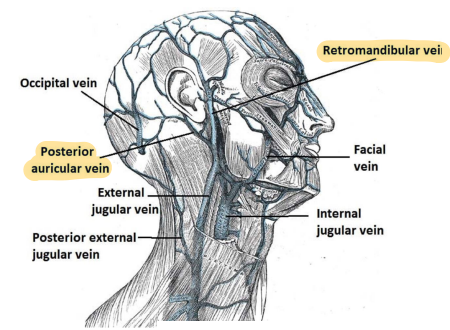
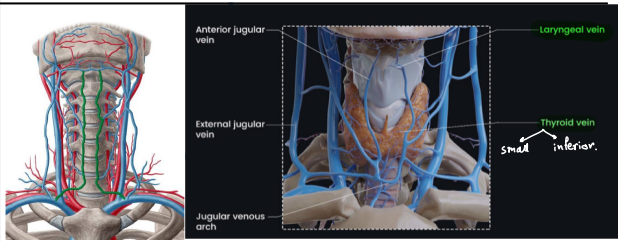


Vein	Origin	Drainage	Major Tributaries	Termination	Additional Notes
External Jugular Vein (EJV)	<p>↳ posterior: angle of mandible ↳ inferior: outer ear.</p> <p>Union of posterior auricular vein and retromandibular vein (posterior branch) ↳ transmission of superficial temporal by maxillary ↳ Drain of face</p>	majority of External face, scalp (superior and posterior to the ear)	<ul style="list-style-type: none"> ● Posterior external jugular vein, ● transverse cervical vein, ● suprascapular vein 	Subclavian vein	<p>✓ In the root of the neck, the vein passes underneath the clavicle,</p>



Anterior Jugular Veins		Anterior neck	<p>On its way down the neck, the anterior jugular vein receives three sets of tributaries:</p> <ul style="list-style-type: none"> ❖ laryngeal veins ❖ small thyroid vein ❖ inferior thyroid veins. 	Subclavian vein	<p>↳ from person to person.</p> <p><u>Variable</u> in size and course, often communicate via a jugular venous arch</p> <p>descend down the midline of the neck.</p>
------------------------	--	---------------	---	-----------------	---



Internal Jugular Vein (IJV)	of TWO intracranial venous sinuses: Inferior petrosal sinus and sigmoid sinus	Brain, skull, <u>face</u> , neck ↳ superficial parts	<p>Inferior petrosal sinus</p> <p>Pharyngeal vein</p> <p>Common facial vein</p> <p>Lingual vein</p> <p>Superior thyroid vein</p> <p>Middle thyroid vein</p> <p>Occipital vein</p>	Subclavian vein to form brachiocephalic vein At the level of the sternoclavicular	
-----------------------------	---	---	---	--	--

