

# ***THE SMALL INTESTINE***

***Dr. Aiman Qais Afar***  
***Surgical Anatomist***

***College of Medicine / University of Mutah***  
***2024-2025***

***Tuesday 8 April 2025***

Duodenojejunal  
junction

Duodenum

LUG

RLQ

Ileocecal  
junction

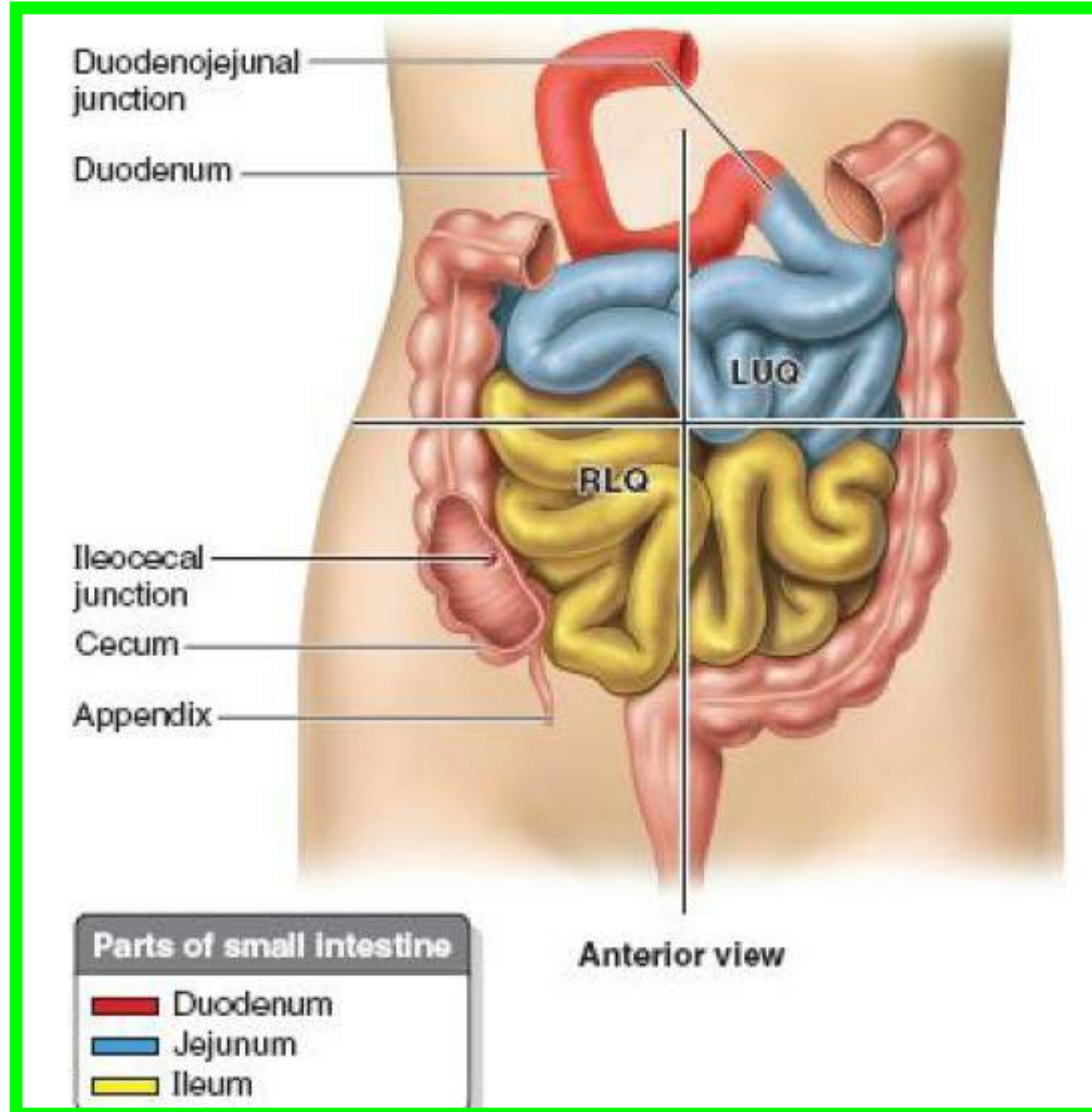
Cecum

Appendix

**Parts of small intestine**

- Duodenum
- Jejunum
- Ileum

Anterior view

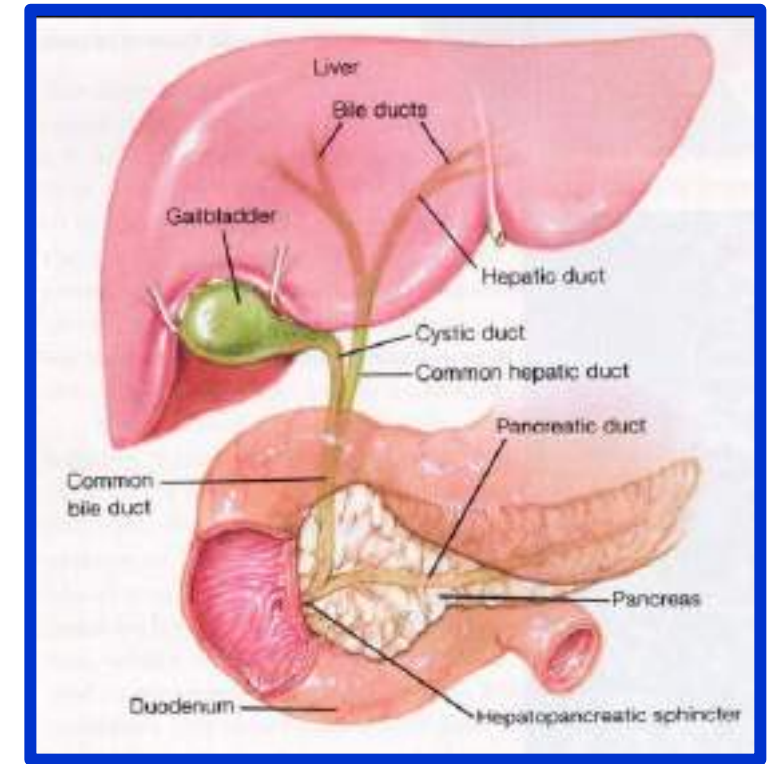


# Small Intestine

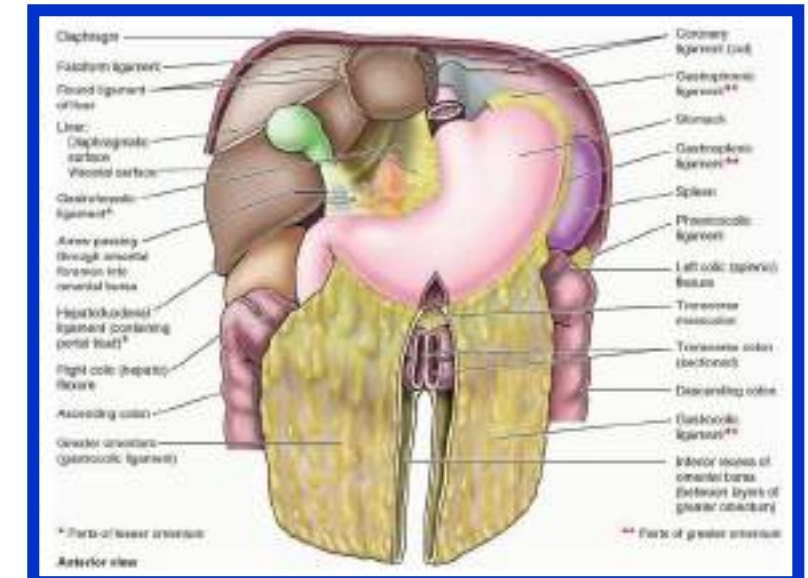
## Duodenum

Dr. Aiman AL-Maathydi  
Tuesday 8 April 2025

- ❖ The duodenum is a **C-shaped tube**, about **10 in. (25 cm)** long, which joins **the stomach** to **the jejunum**.
- ❖ It receives the openings of **the bile** and **pancreatic ducts**. The duodenum curves around the head of the pancreas



**The first inch (2.5 cm)** of the duodenum resembles the stomach in that it is covered on its anterior and posterior surfaces with peritoneum and has **the lesser omentum** attached to its upper border and **the greater omentum** attached to its lower border



# Duodenum

The remainder of the duodenum is **retroperitoneal**, being only partially covered by peritoneum.

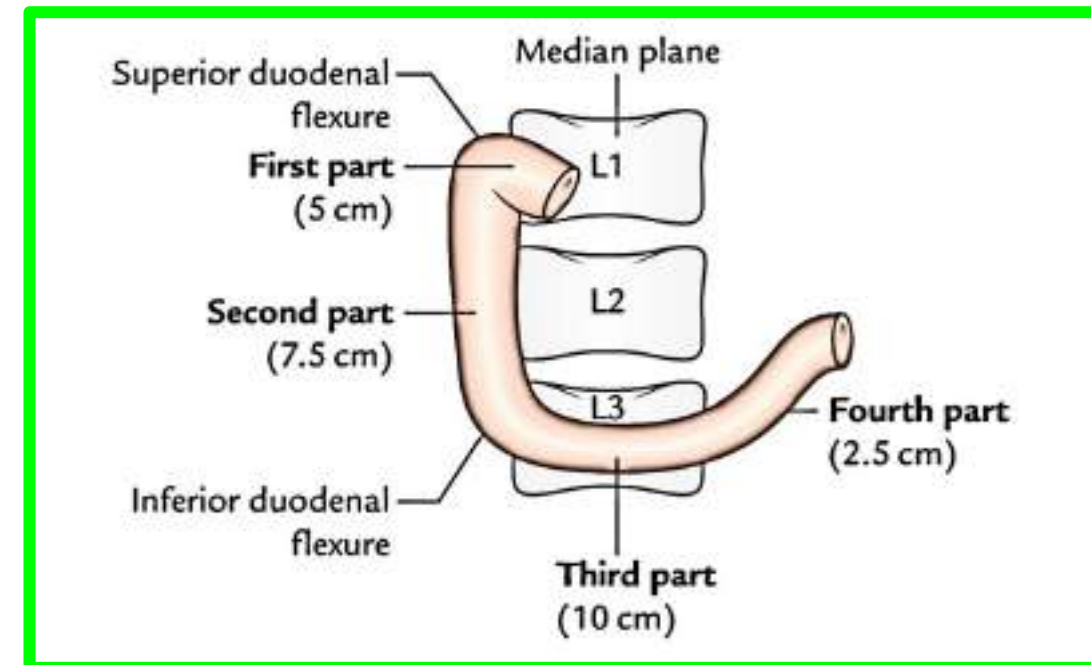
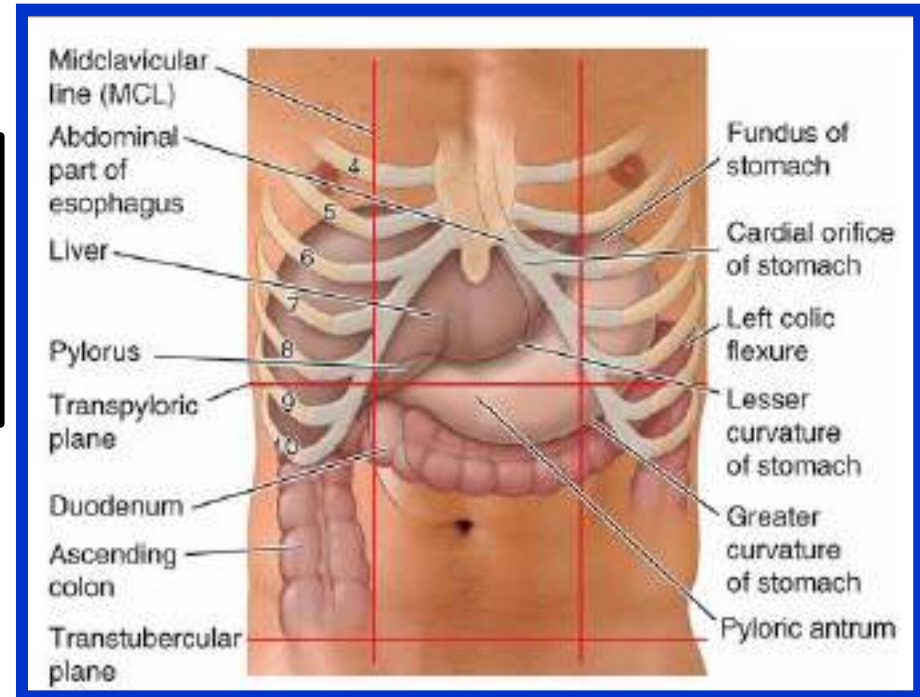
## Parts of the Duodenum

❖ The duodenum is situated in **the epigastric** and **umbilical regions** and, for purposes of description, is divided into four parts:

### First Part of the Duodenum

begins at the pylorus and runs upward and backward on the **transpyloric plane** at the level of the **first lumbar vertebra**.

The **relations** of this part are as follows:





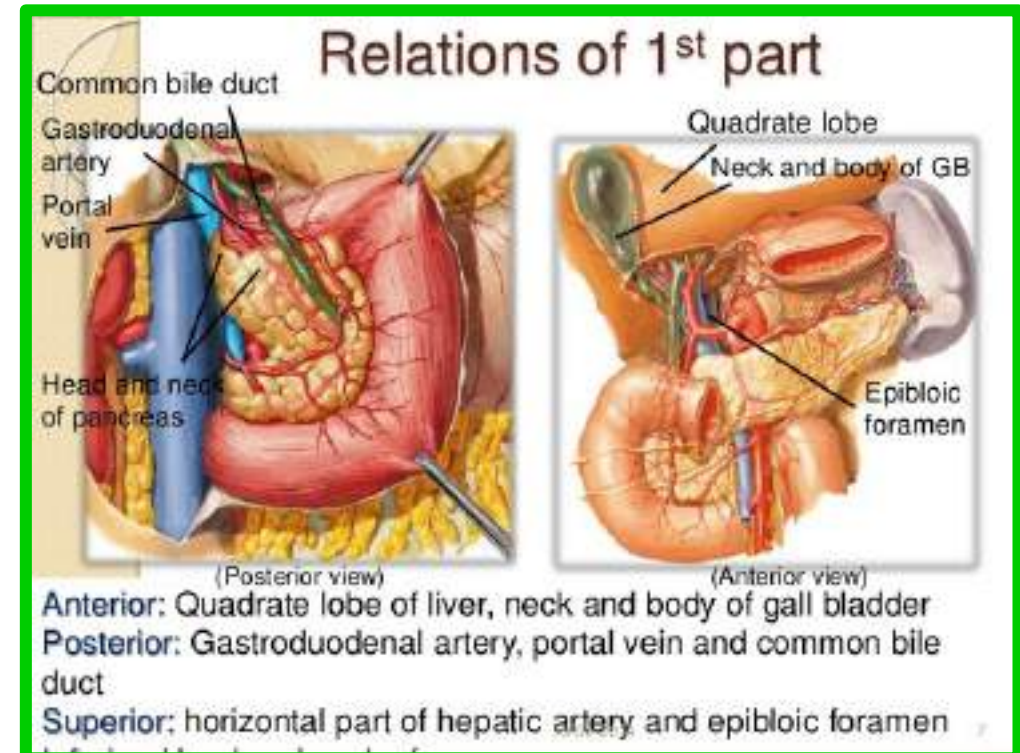
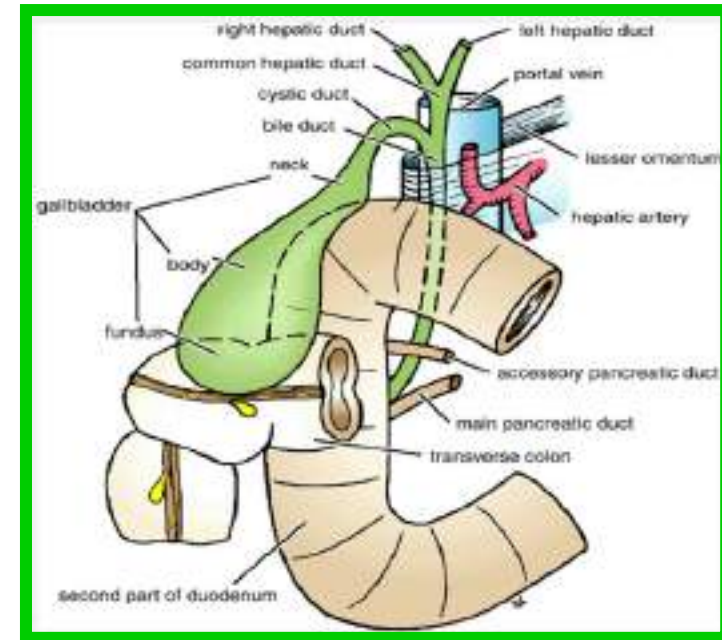
# Duodenum

**Anteriorly:** The quadrate lobe of the liver and the gallbladder

**Posteriorly:** The lesser sac (**first inch only**), the **gastroduodenal artery**, the **bile duct** and **portal vein**, and the **inferior vena cava**.

**Superiorly:** The entrance into the lesser sac (**the epiploic foramen**)

**Inferiorly:** The head of the pancreas.



# Duodenum

Dr. Aiman AL-Maathydi  
Tuesday 8 April 2025

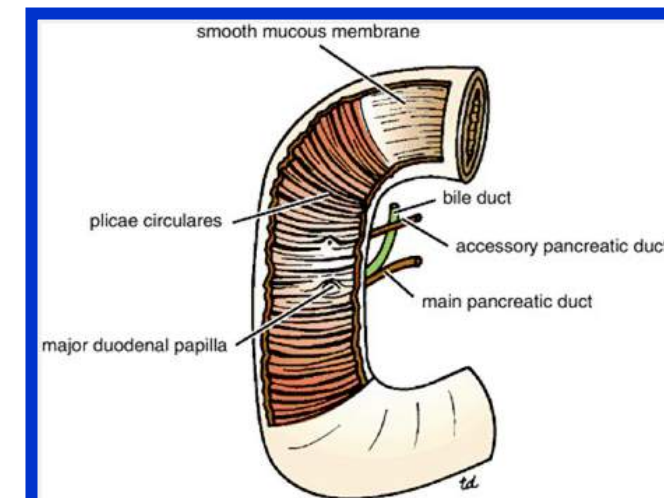
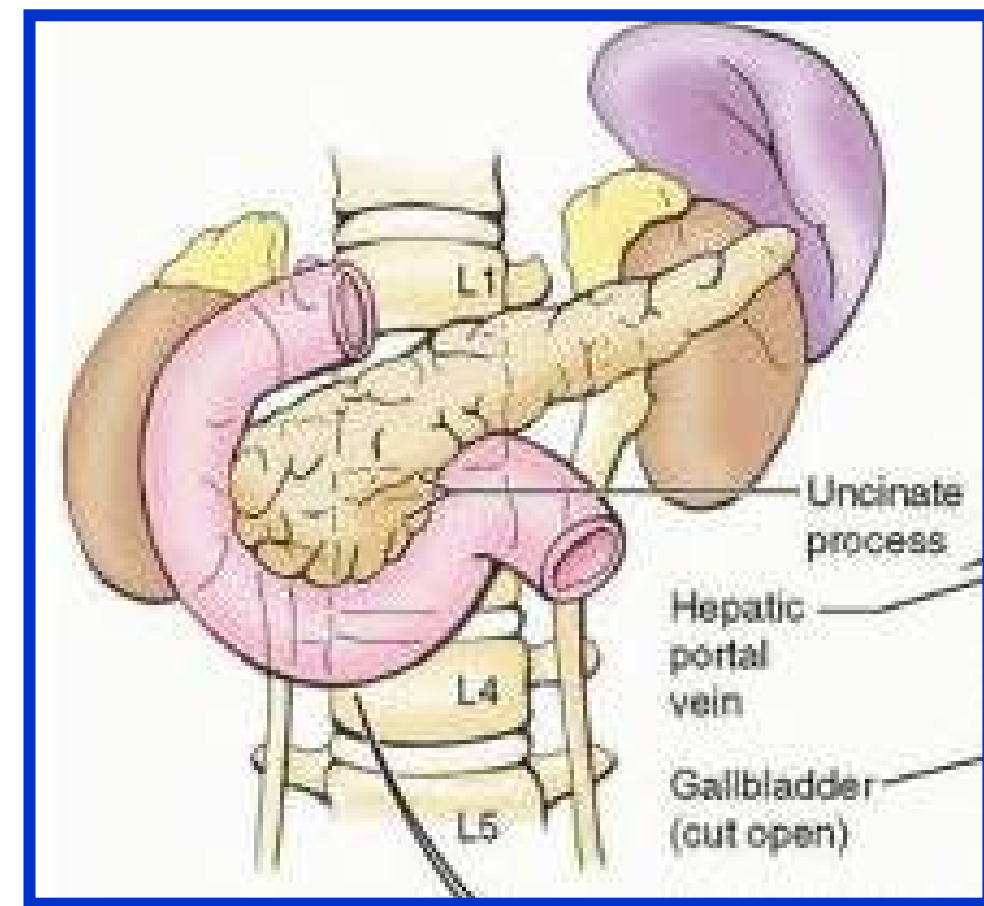
## ❑ Second Part of the Duodenum

❖ Runs vertically downward in front of the hilum of the right kidney on the right side of the second and third lumbar vertebrae.

❖ About halfway down its medial border, the bile duct and the main pancreatic duct pierce the duodenal wall

❖ They unite to form the ampulla that opens on the summit of the major duodenal papilla.

❖ The accessory pancreatic duct, if present, opens into the duodenum a little higher up on the minor duodenal papilla.



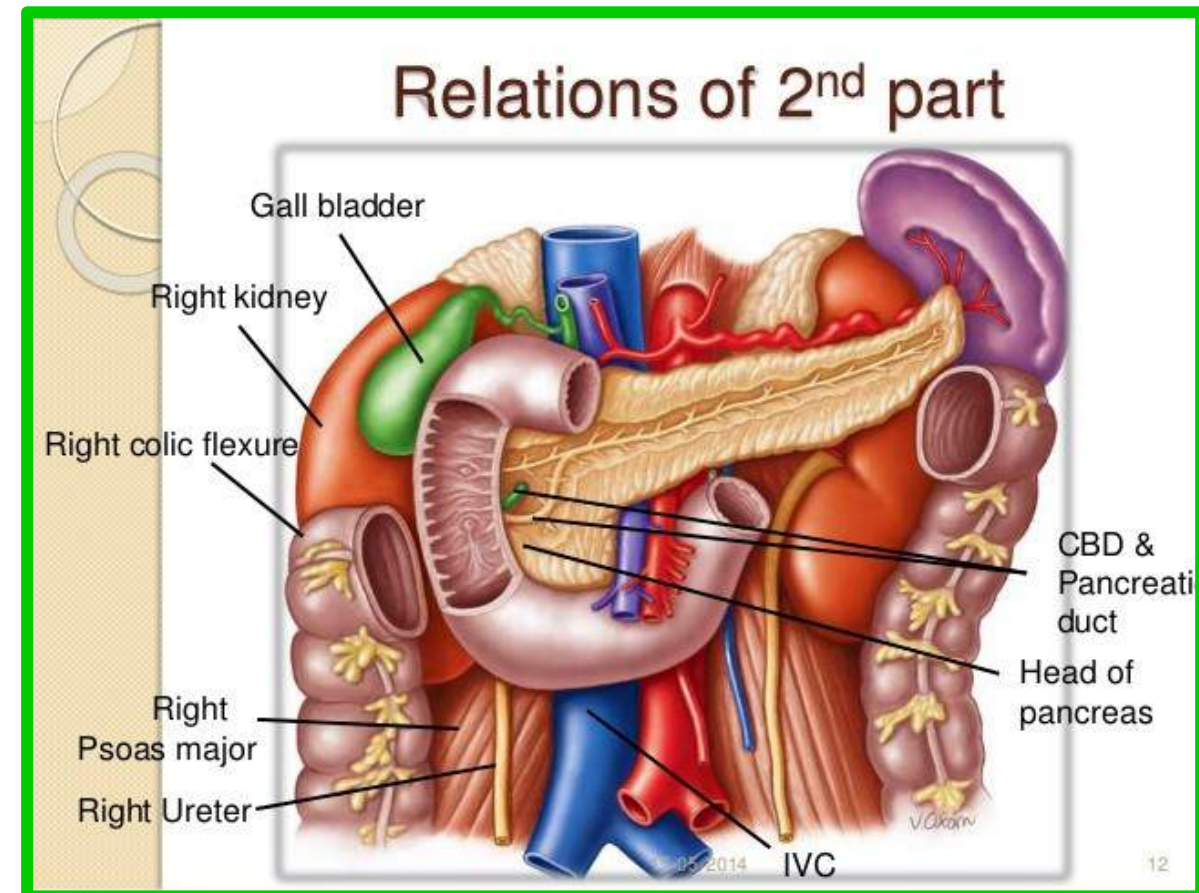
# Duodenum

7

Dr. Aiman AL-Maathydi  
Tuesday 8 April 2025

The **relations 2<sup>nd</sup> part** are as follows:

- **Anteriorly:** The **fundus of the gallbladder** and the **right lobe of the liver**, the **transverse colon**, and the **coils of the small intestine**
- **Posteriorly:** The **hilum of the right kidney** and the **right ureter**.
- **Laterally:** The **ascending colon**, the **right colic flexure**, and the **right lobe of the liver**.
- **Medially:** The **head of the pancreas**, the **bile duct**, and the **main pancreatic duct**.





# Duodenum

Dr. Aiman AL-Maathydi

Tuesday 8 April 2025

8

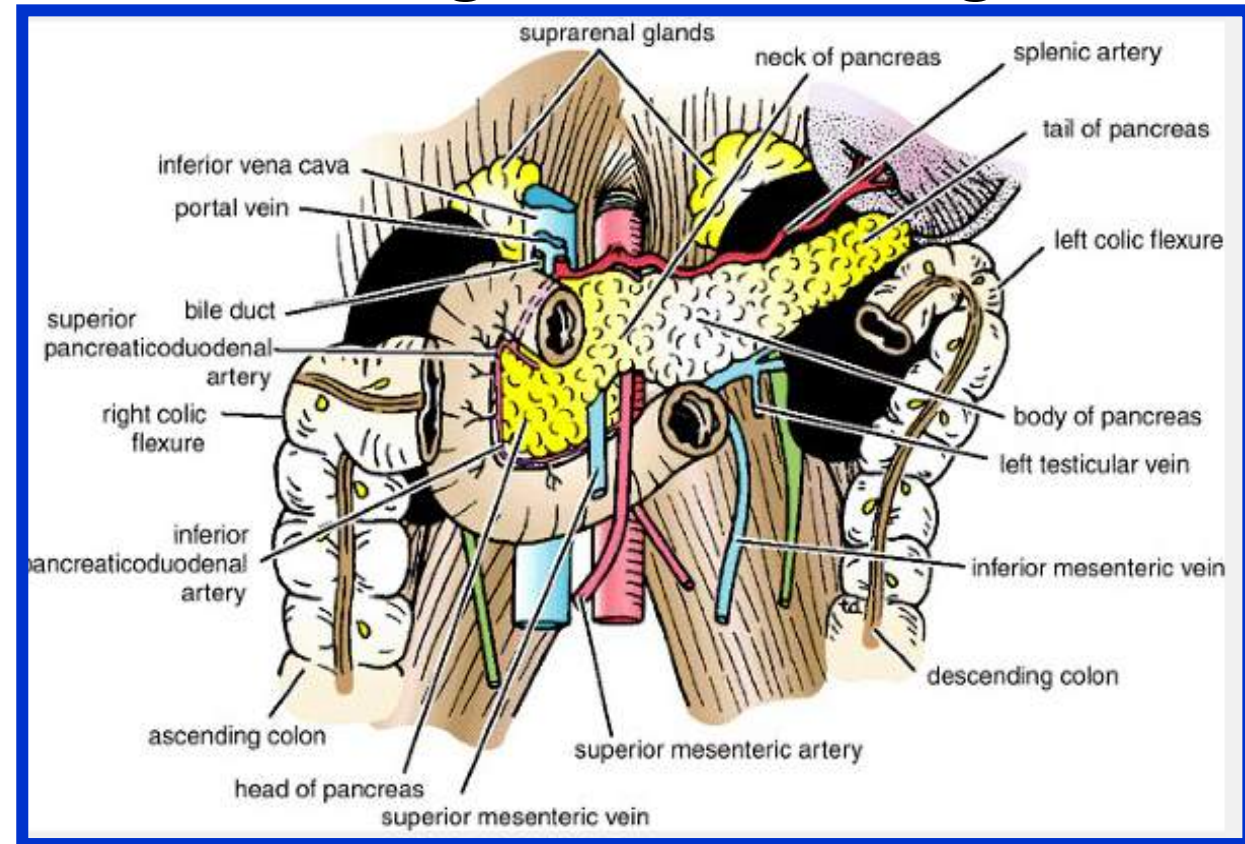
## Third Part of the Duodenum

Passing in front of the vertebral column and following the lower margin of the head of the pancreas

The relations :

✓ **Anteriorly:** The root of the mesentery of the small intestine, the superior mesenteric vessels (contained within it), and coils of jejunum.

✓ **Posteriorly:** The right ureter, the right psoas muscle, the inferior vena cava, and the aorta



- ✓ **Superiorly:** The head of the pancreas
- ✓ **Inferiorly:** Coils of jejunum



## □ Fourth Part of the Duodenum

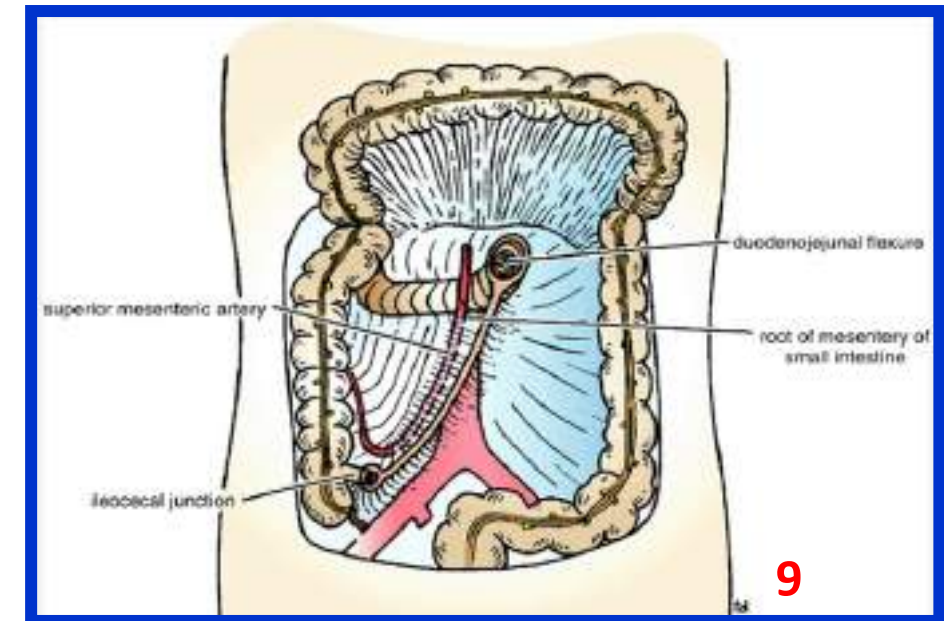
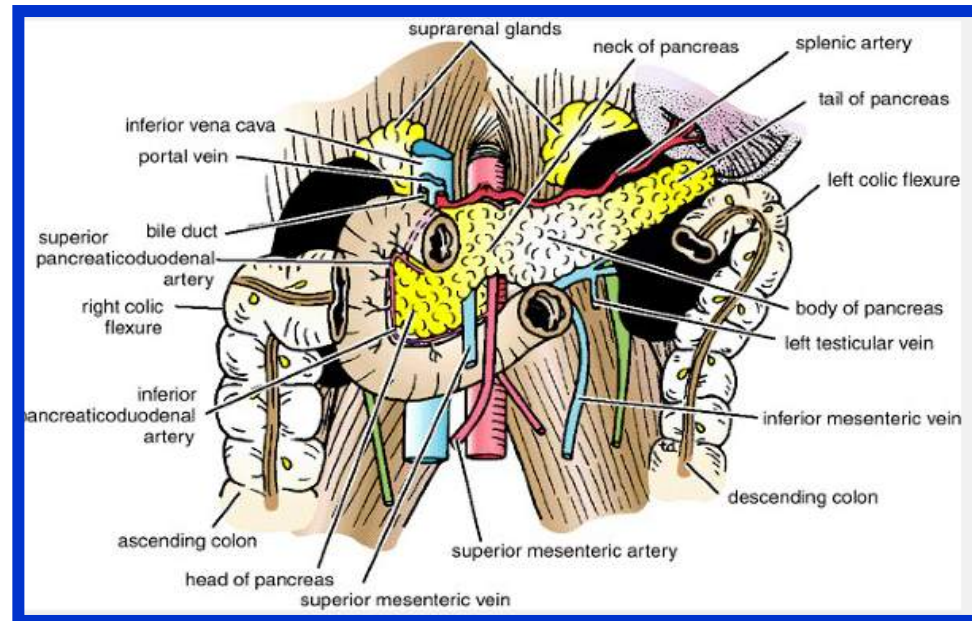
runs upward and to the left to **the duodenojejunal flexure**.

The flexure is held in position by a peritoneal fold, **the ligament of Treitz**, which is attached to the right crus of the diaphragm.

**The relations are as follows:**

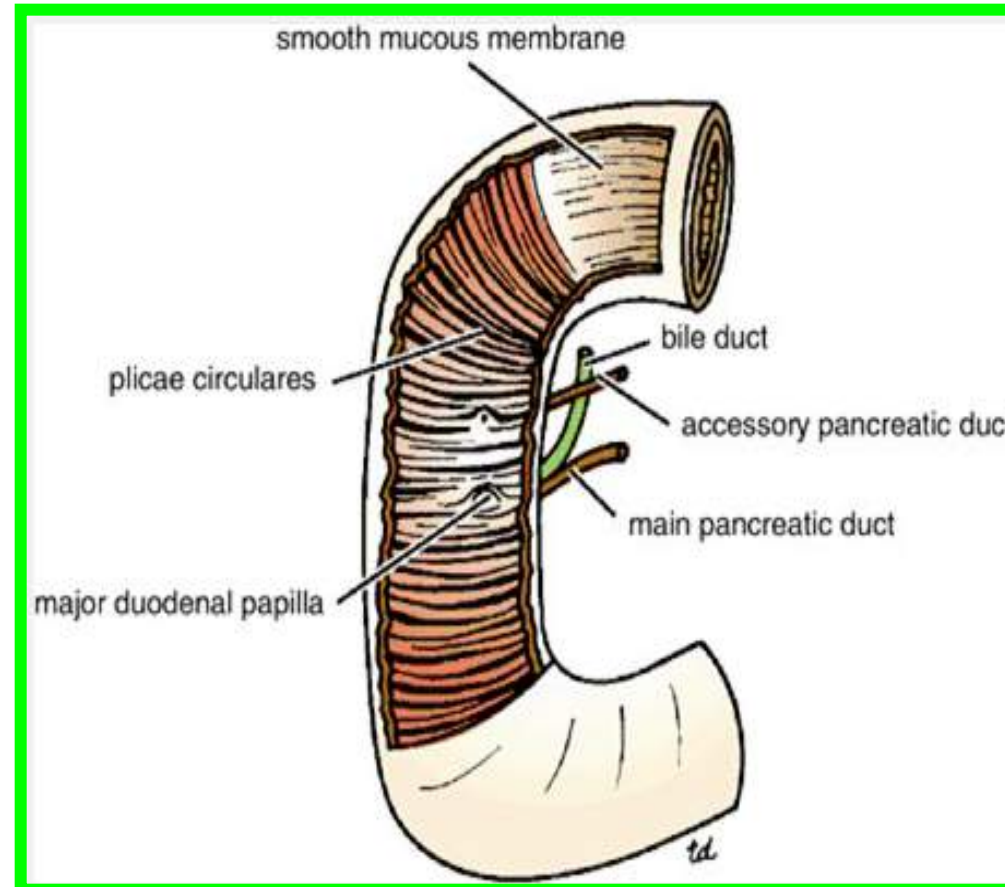
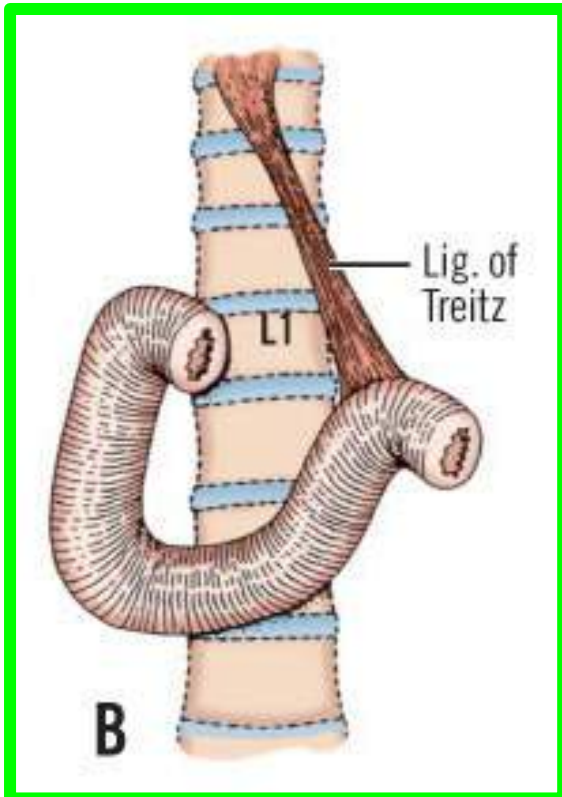
**Anteriorly:** The **beginning of the root of the mesentery** and **coils of jejunum**

**Posteriorly:** The **left margin of the aorta** and the **medial border of the left psoas muscle**



## Mucous Membrane and Duodenal Papillae

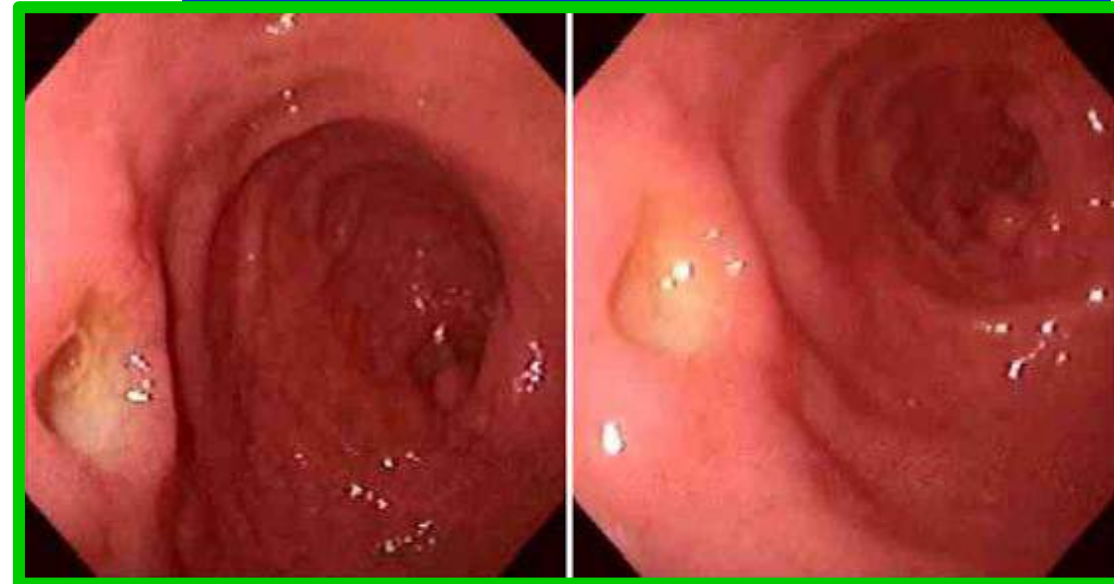
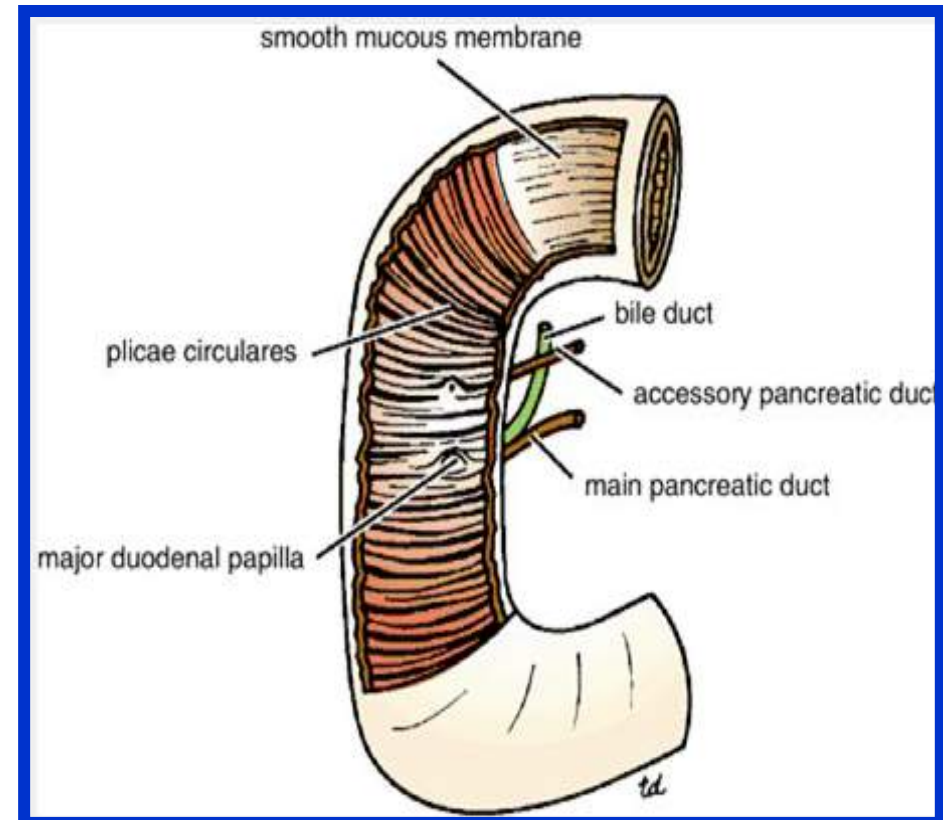
- ❖ The mucous membrane of the duodenum is thick.
- ❖ In the first part of the duodenum it is smooth.
- ❖ In the remainder of the duodenum it is thrown into numerous circular folds called **the plicae circulares**.



# Duodenum

❖ At the site where **the bile duct** and **the main pancreatic duct** pierce the medial wall of the second part is a small, rounded elevation called the **major duodenal papilla**

❖ **The accessory pancreatic duct**, if present, opens into the duodenum on a smaller papilla about 0.75 in. (1.9 cm) above **the major duodenal papilla** called **minor duodenal papilla**.



Dr. Aiman AL-Maathydi

Tuesday 8 April 2025



# Duodenum

## Arteries

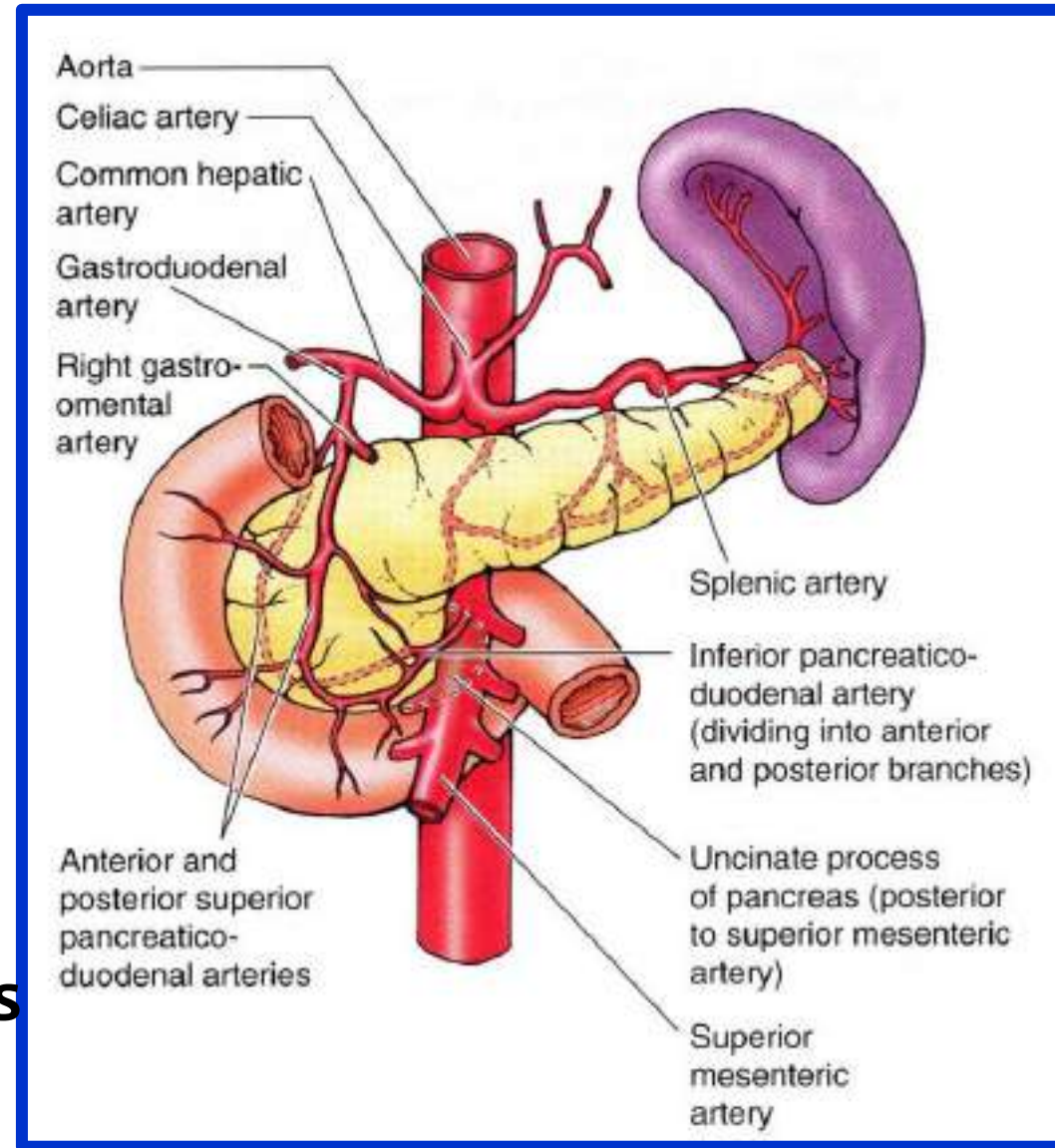
❖ The upper half is supplied by the **superior pancreaticoduodenal artery**, a branch of the **gastrooduodenal artery**.

❖ The lower half is supplied by the **inferior pancreaticoduodenal artery**, a branch of the **superior mesenteric artery**.

## Veins:

The **superior pancreaticoduodenal vein** drains into the **portal vein**

The inferior vein joins the **superior mesenteric vein**.



# Duodenum

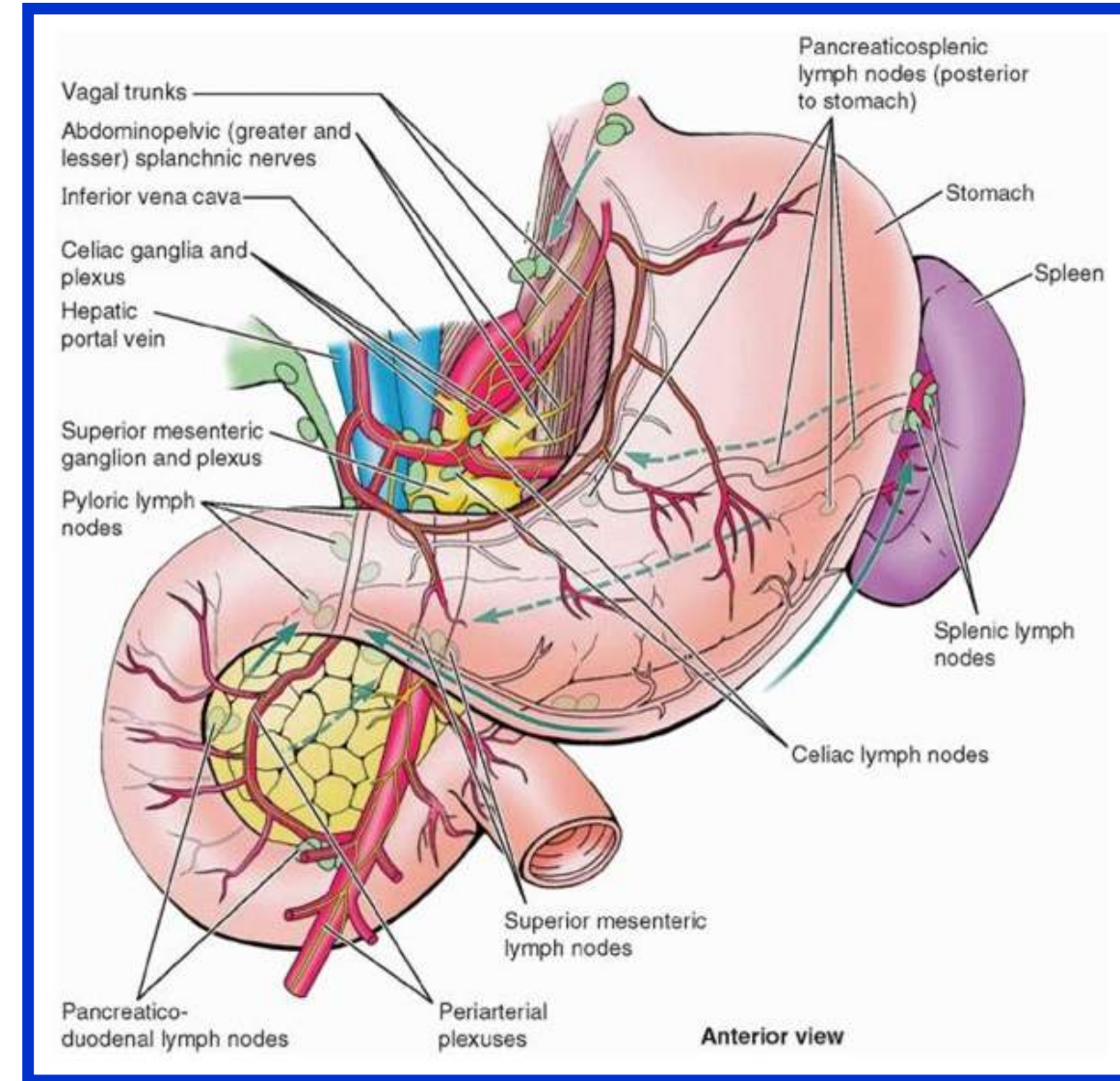
## Lymph Drainage

The lymph vessels follow the arteries and drain upward via **pancreaticoduodenal nodes** to the **gastroduodenal nodes** and then to the **celiac nodes** and

Downward via **pancreaticoduodenal nodes** to the **superior mesenteric nodes** around the origin of the **superior mesenteric artery**.

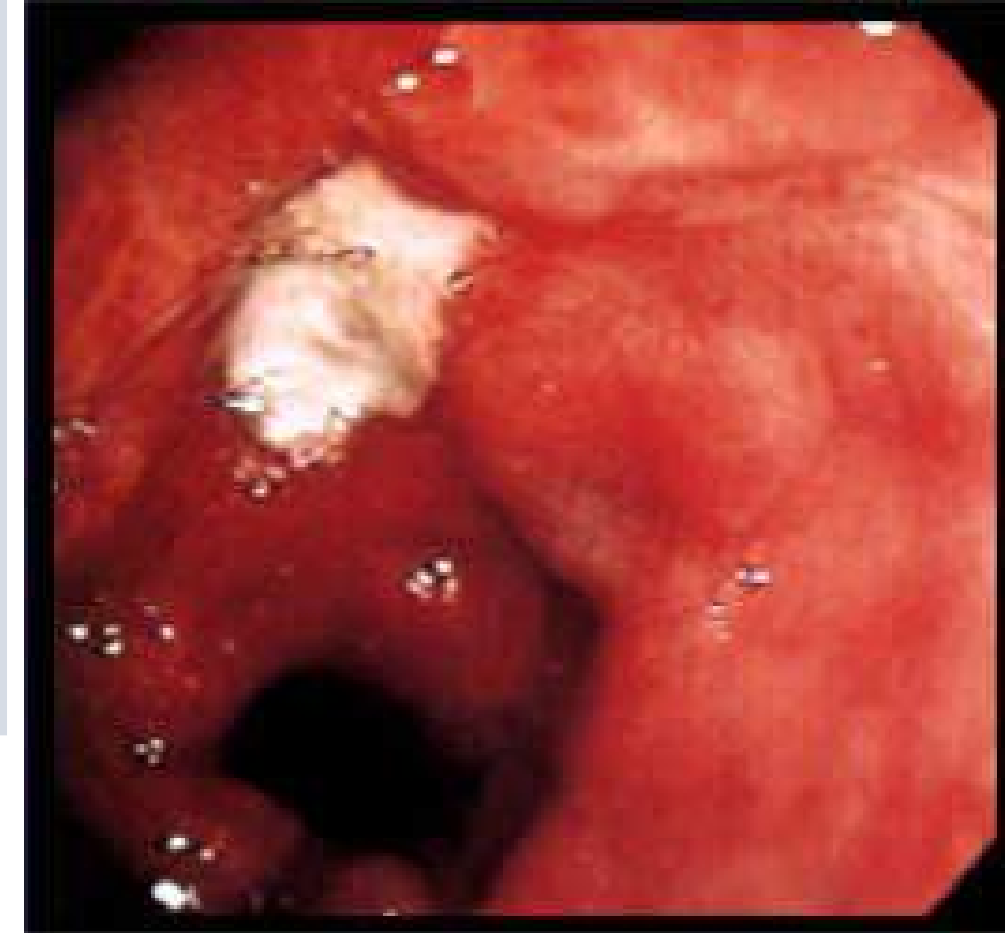
## Nerve Supply

The nerves are derived from **sympathetic** from the **celiac** and **superior mesenteric plexuses** and **parasympathetic (vagus)** nerves



**Duodenal ulcers (peptic ulcers)** are inflammatory erosions of the duodenal mucosa. Most **(65%)** duodenal ulcers occur in the posterior wall of the superior part of the duodenum within **3 cm** of the pylorus.

Occasionally, an ulcer perforates the duodenal wall, permitting the contents to enter the peritoneal cavity and causing peritonitis.



Although **bleeding from duodenal ulcers** commonly occurs, erosion of **the gastroduodenal artery** (a posterior relation of the superior part of the duodenum) by a duodenal ulcer results in severe hemorrhage into the peritoneal cavity and subsequent peritonitis

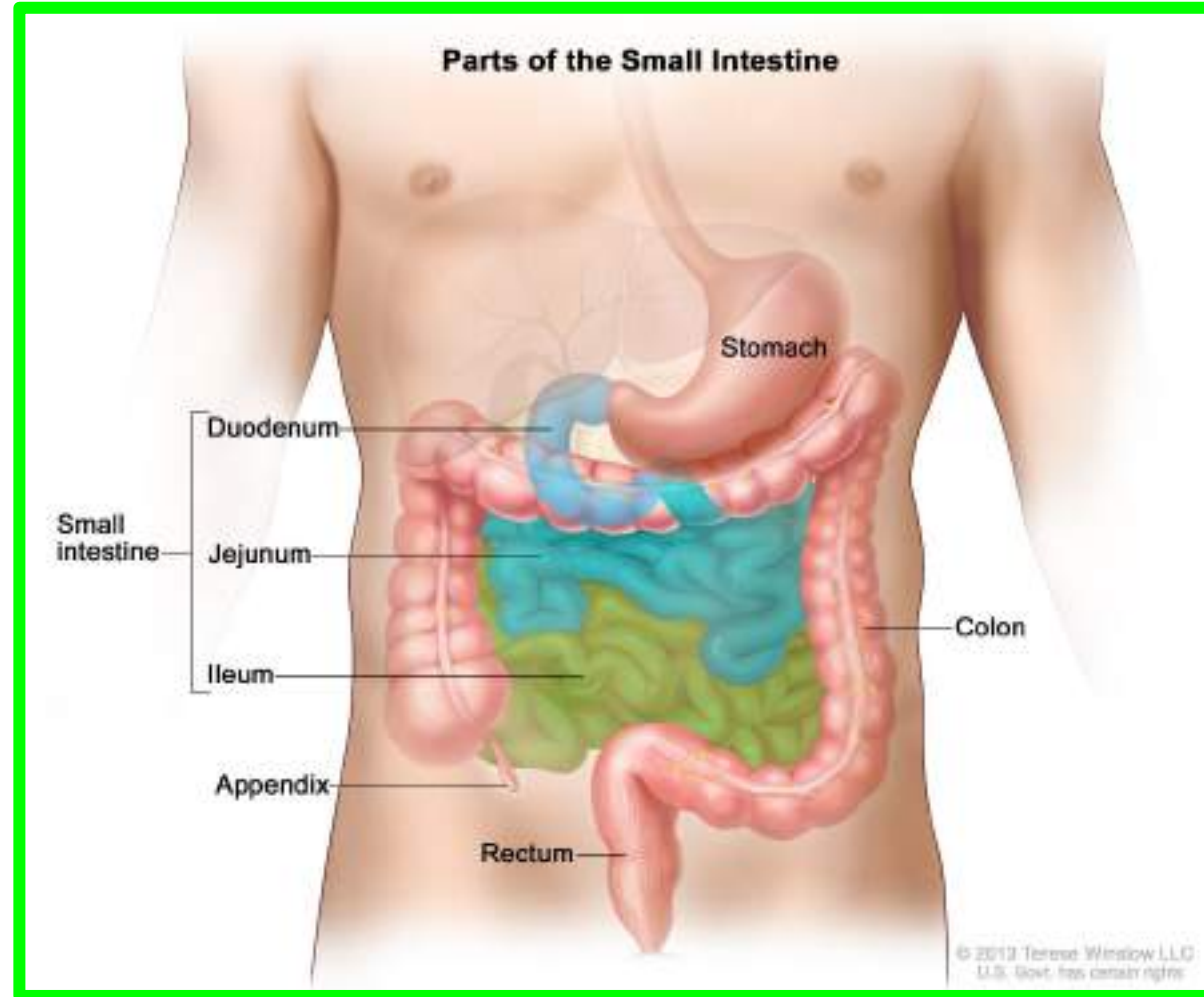


# Jejunum and Ileum

❖ The **jejunum** and **ileum** measure about **20 ft (6 m)** long; the **upper two fifths** of this length make up the **jejunum**.

❖ The **jejunum** begins at the **duodenojejunal flexure**, and the **ileum** ends at **the ileocecal junction**

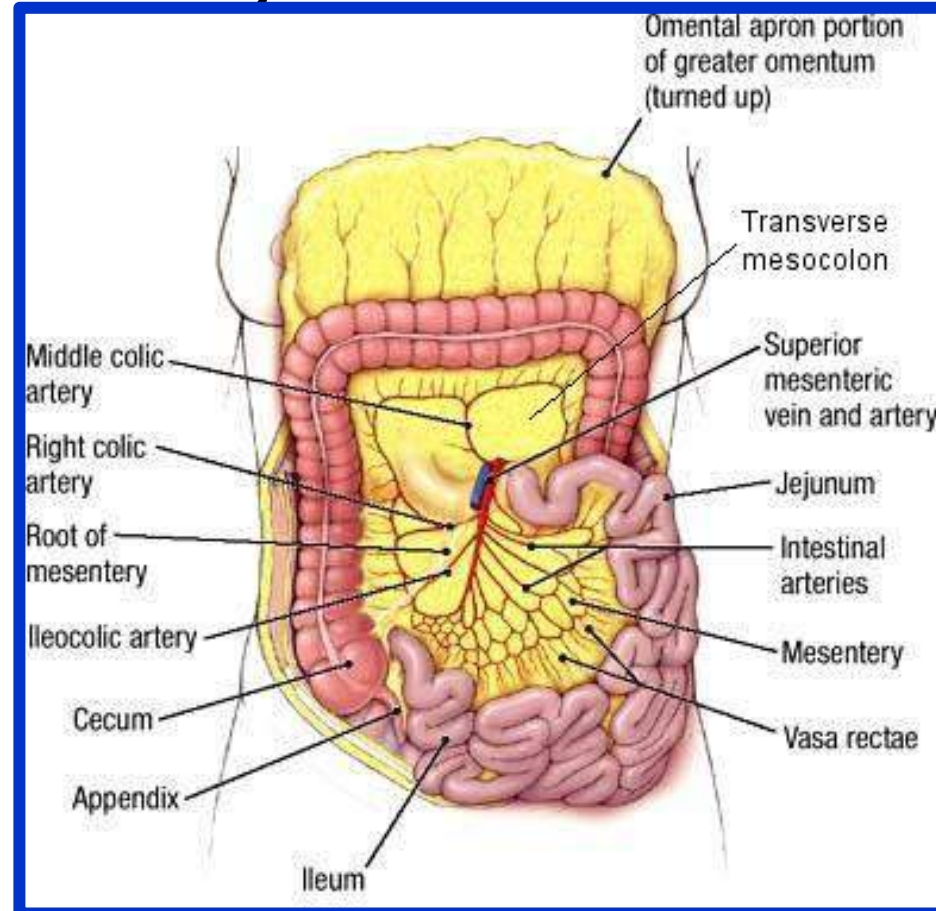
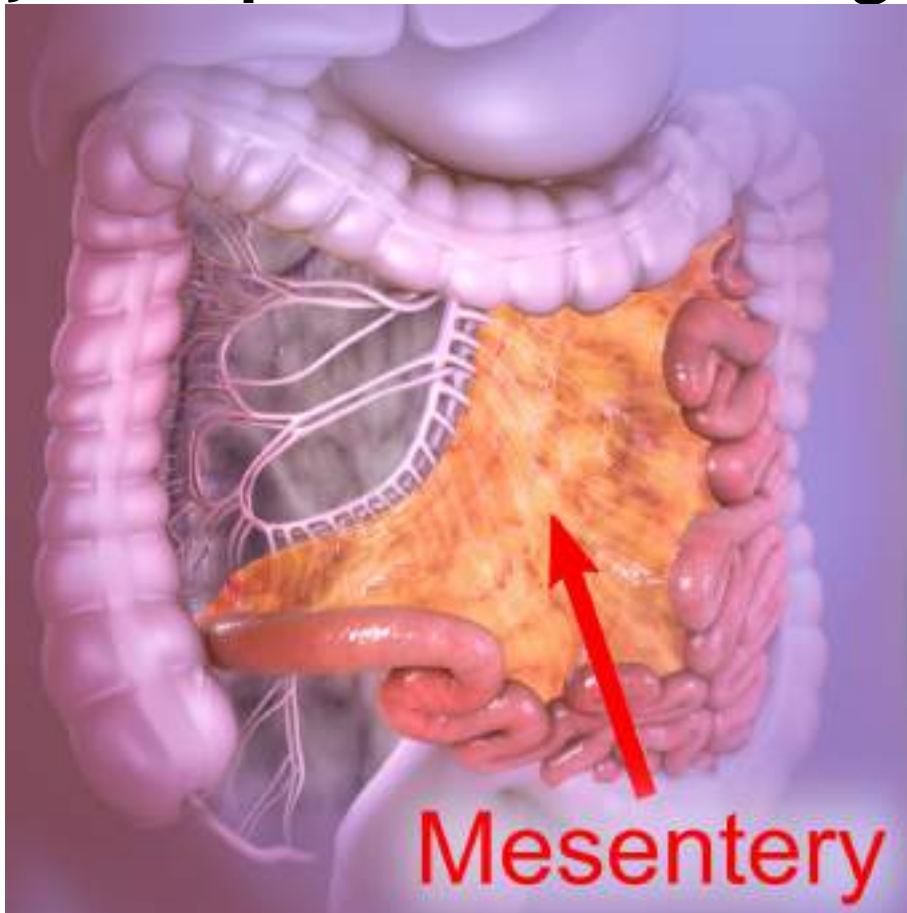
❖ The coils of **jejunum** and **ileum** are freely mobile and are attached to the **posterior abdominal wall** by a fan-shaped fold of peritoneum known as **the mesentery of the small intestine**



# Jejunum and Ileum

Dr. Aiman AL-Maathydi  
Tuesday 8 April 2025

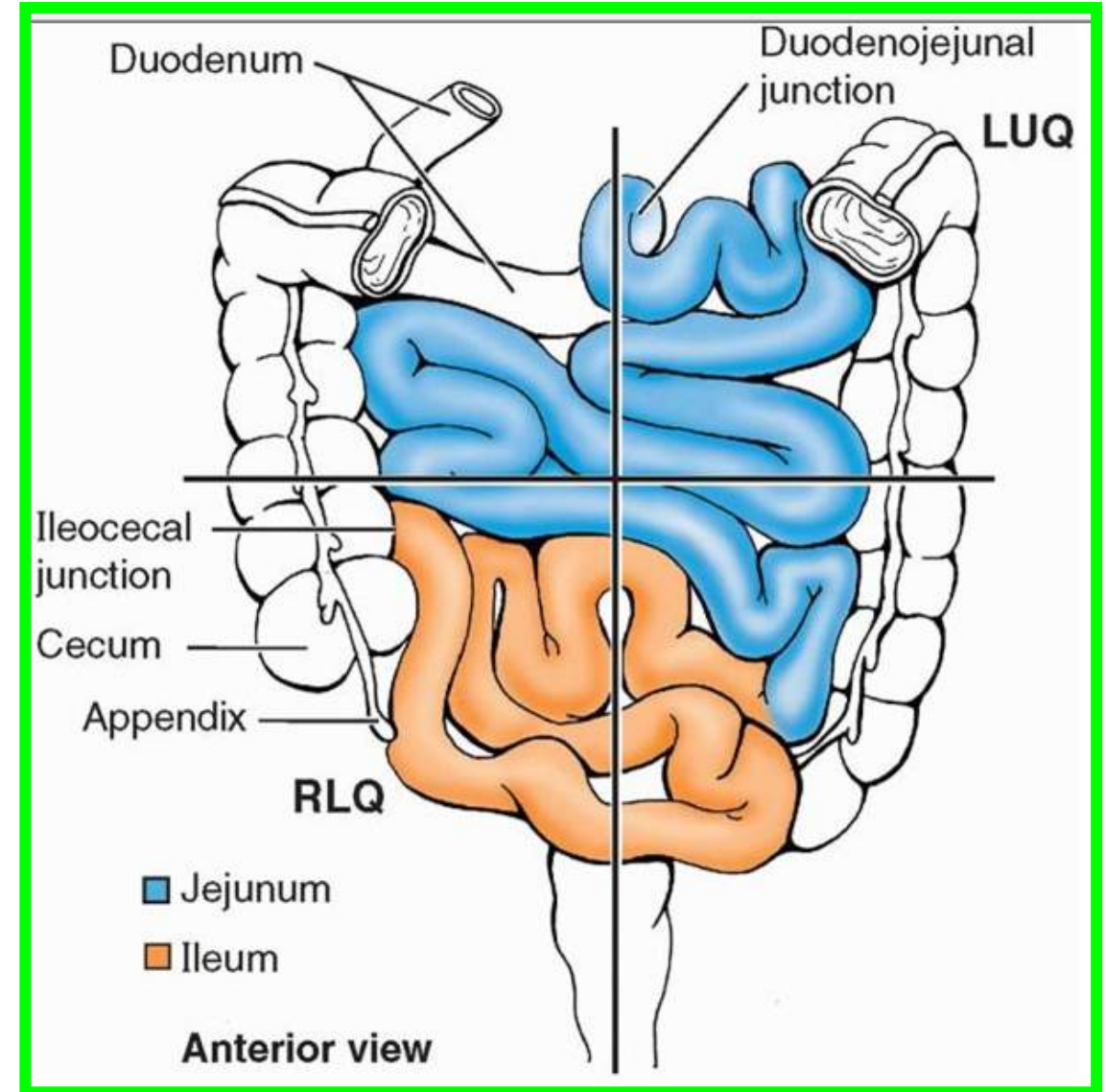
The root of the mesentery permits the entrance and exit of the branches of the **superior mesenteric artery** and **vein**, **lymph vessels**, and **nerves** into the space between the two layers of peritoneum forming the mesentery



# Jejunum and Ileum

In the living, the jejunum can be distinguished from the ileum by the following features

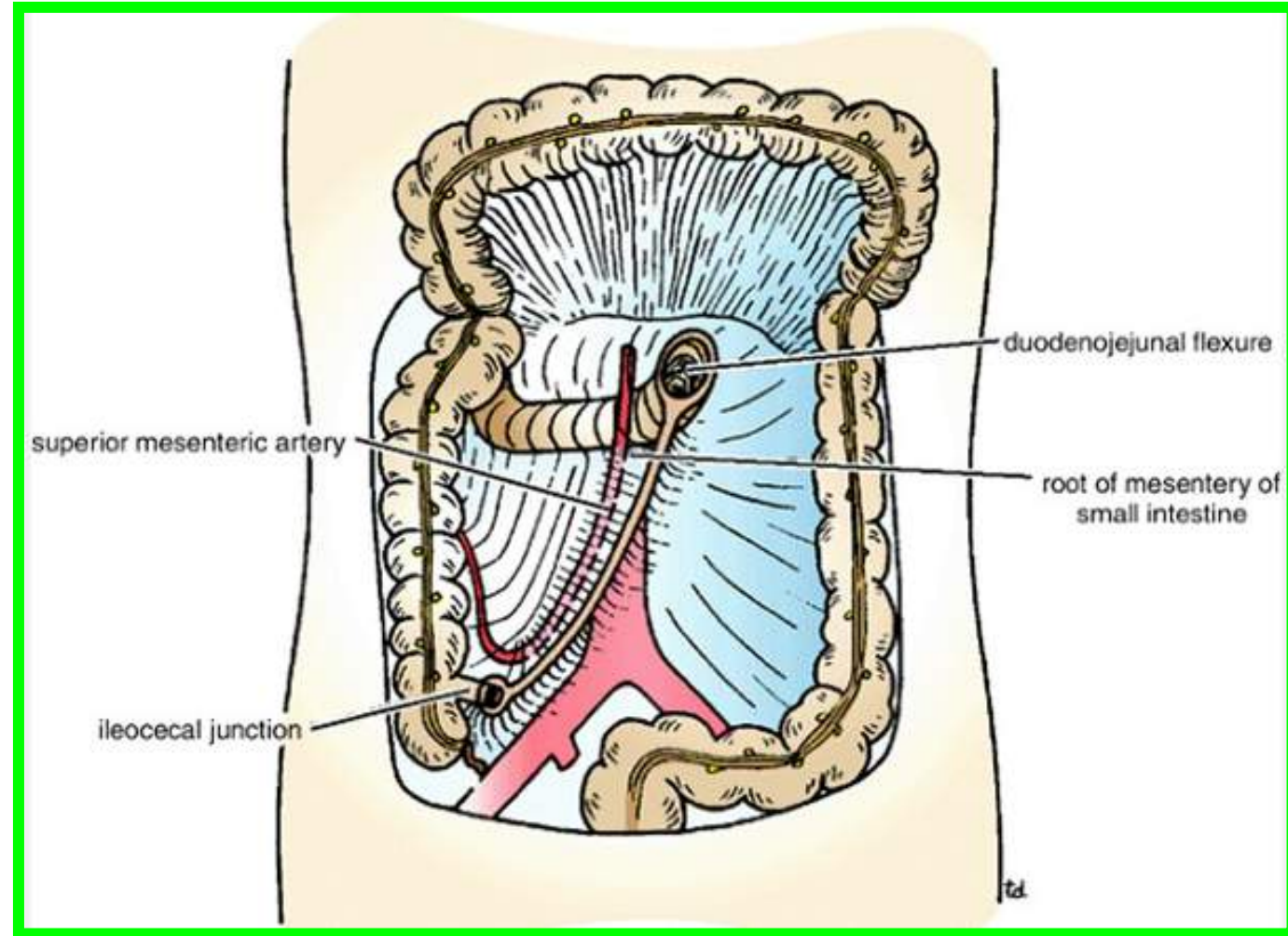
❖ **The jejunum** lies coiled in the upper part of the peritoneal cavity below the left side of the transverse mesocolon; **the ileum** is in the lower part of the cavity and in the pelvis





# Jejunum and Ileum

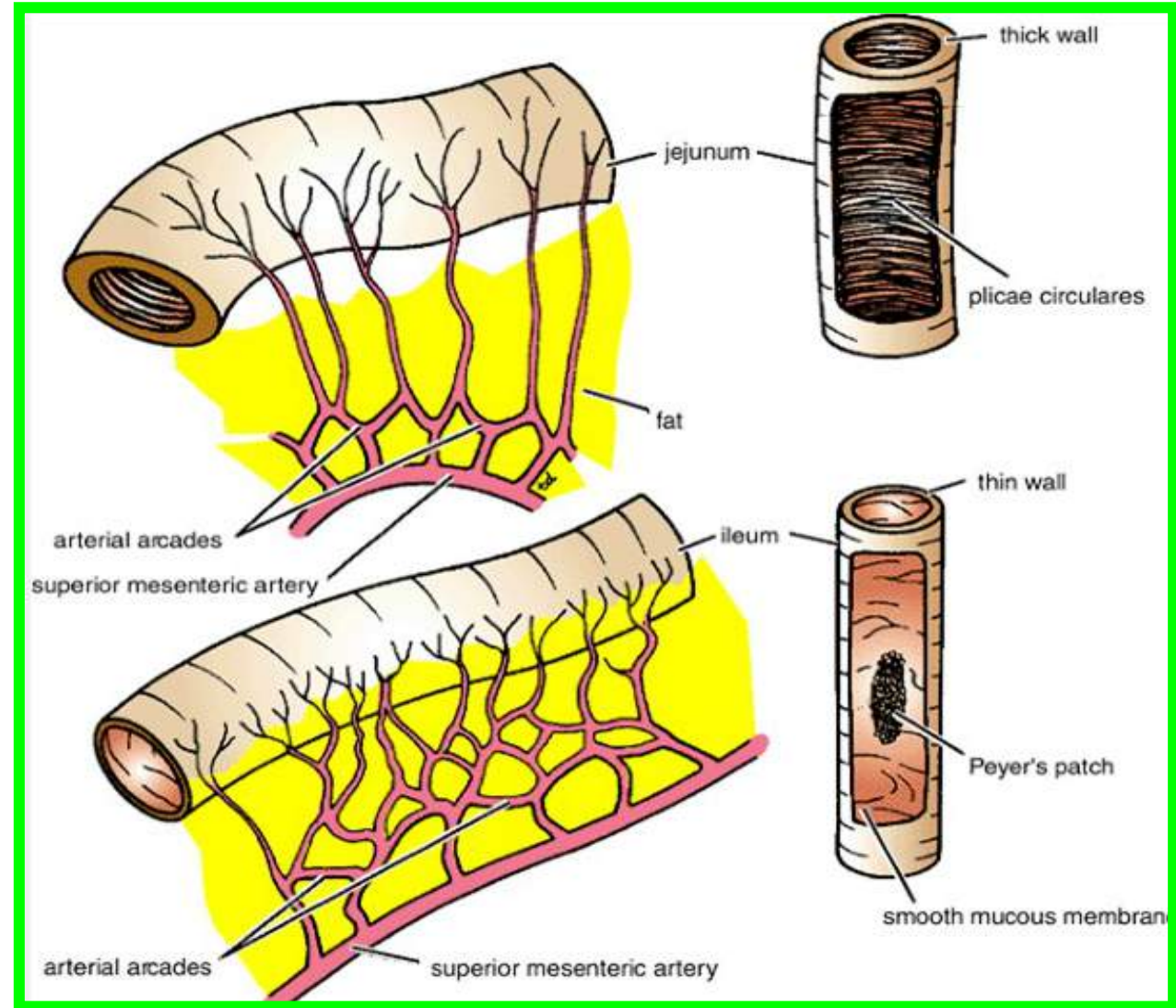
- ❖ The jejunal mesentery is attached to the posterior abdominal wall above and to the left of the aorta, whereas
- ❖ The ileal mesentery is attached below and to the right of the aorta



# Jejunum and Ileum

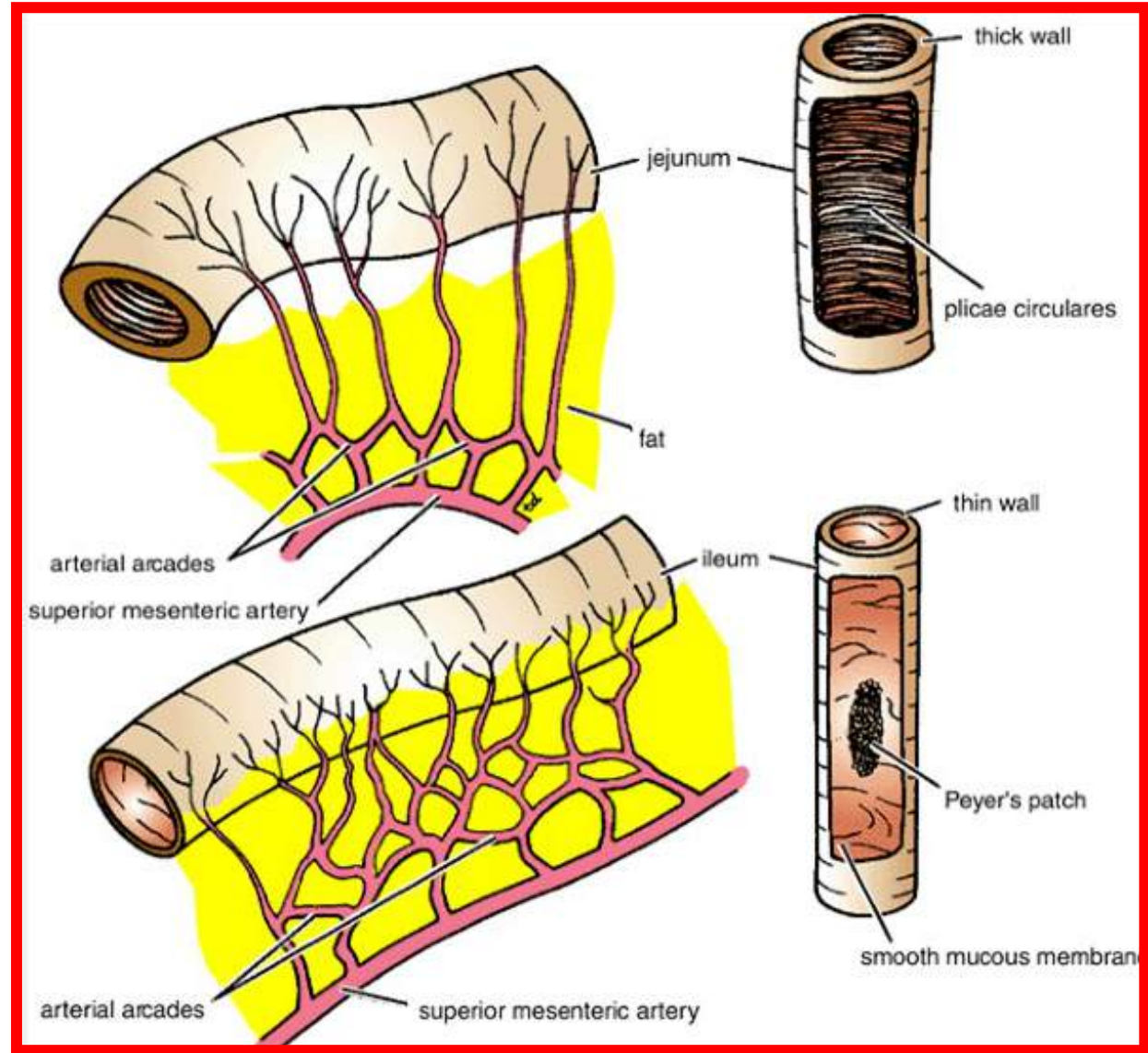
❖ The jejunal mesenteric vessels form only **one or two arcades**, with long and infrequent branches passing to the intestinal wall.

❖ The ileum receives numerous short terminal vessels that arise from a series **of three or four or even more arcades**



# Jejunum and Ileum

❖ The jejunum is wider bore, thicker walled, and redder than the ileum. The jejunal wall feels thicker because the plicae circulares, are larger, more numerous, and closely set in the jejunum, whereas in the upper part of the ileum they are smaller and more widely separated and in the lower part they are absent

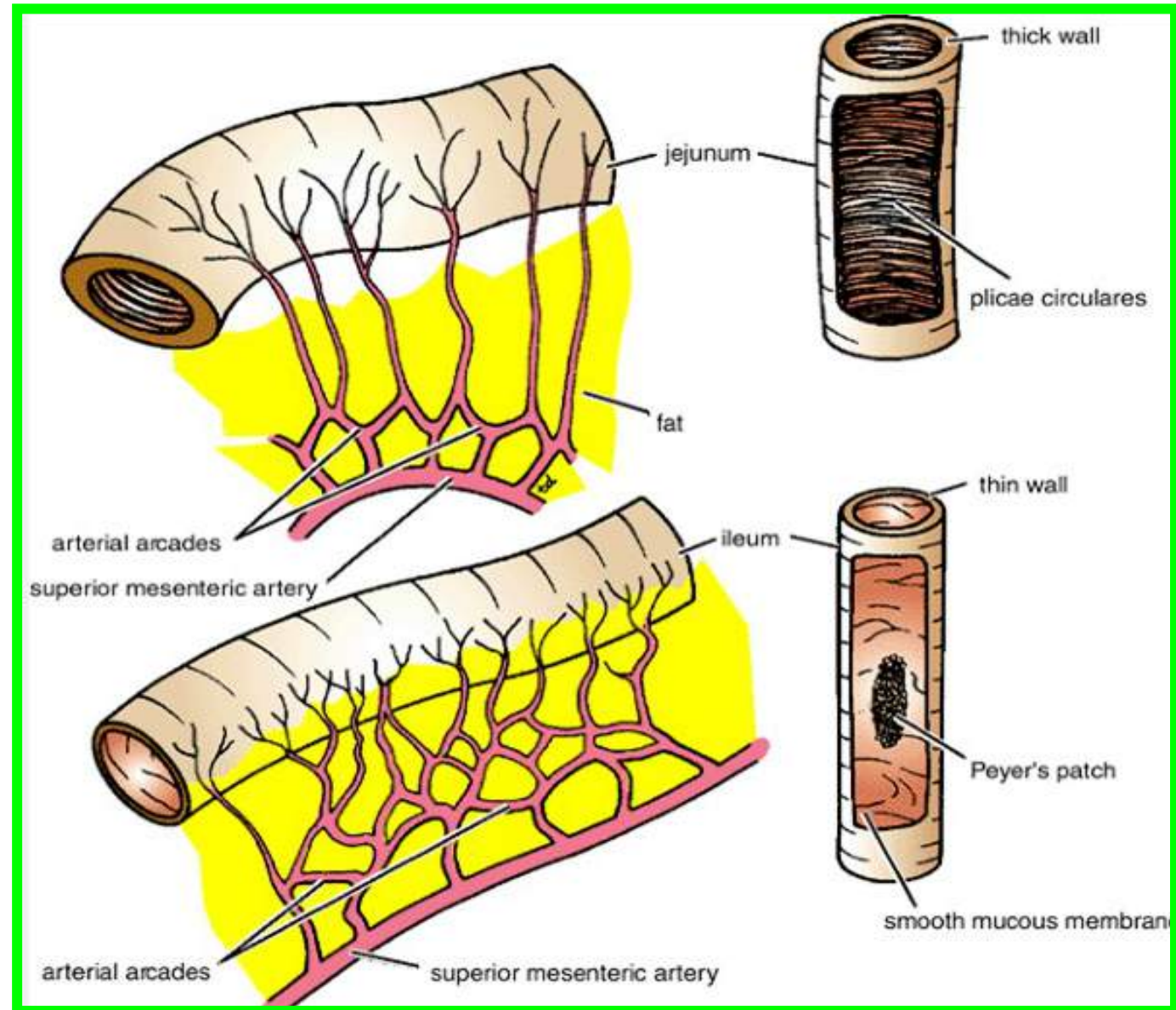




# Jejunum and Ileum

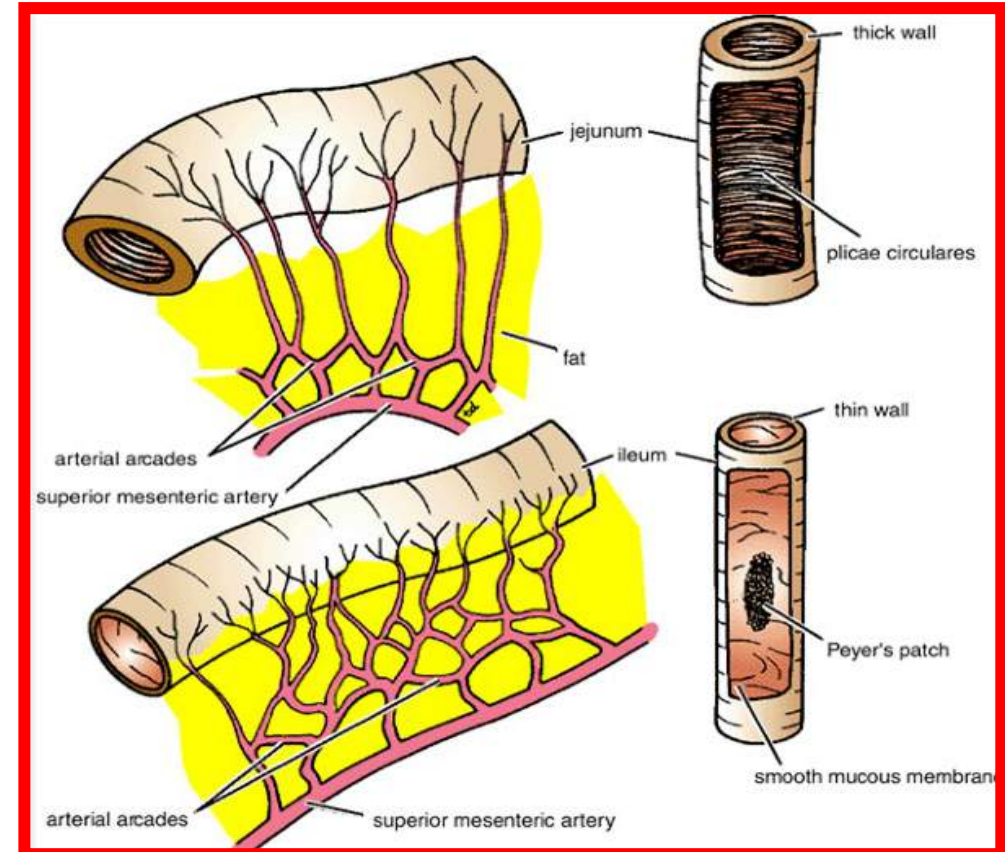
❖ At the jejunal end of the mesentery, the fat is deposited near the root and is scanty near the intestinal wall.

❖ At the ileal end of the mesentery the fat is deposited throughout so that it extends from the root to the intestinal wall



# Jejunum and Ileum

❖ Aggregations of lymphoid tissue (Peyer's patches) are present in the mucous membrane of the lower ileum along the antimesenteric border. In the living these may be visible through the wall of the ileum from the outside

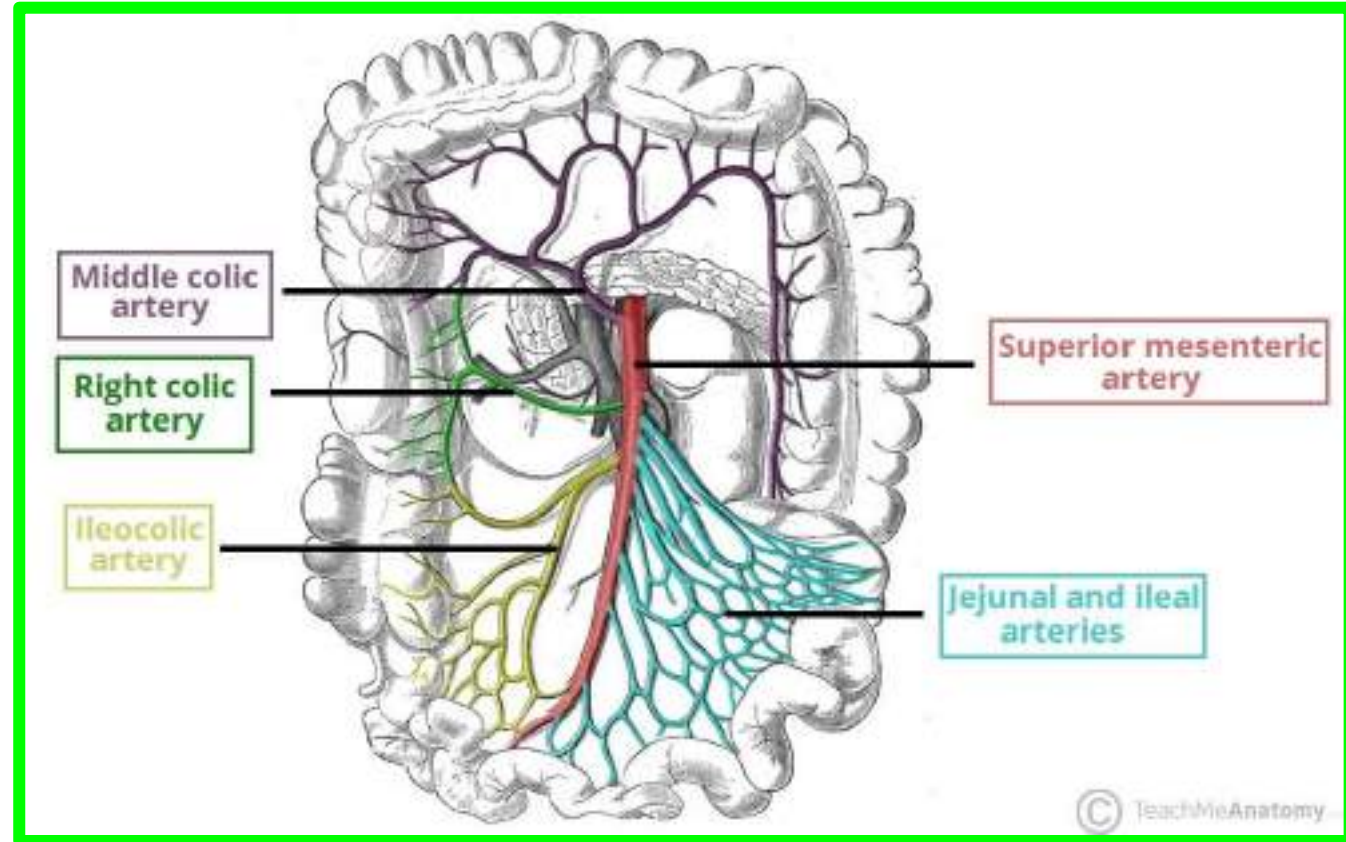


# Jejunum and Ileum

## Arteries

✓ The arterial supply is from branches of **the superior mesenteric artery**

✓ **The intestinal branches** arise from the left side of the artery and run in the mesentery to reach the gut.



- ✓ They anastomose with one another to form a series of arcades.
- ✓ The lowest part of the ileum is also supplied by **the ileocolic artery**



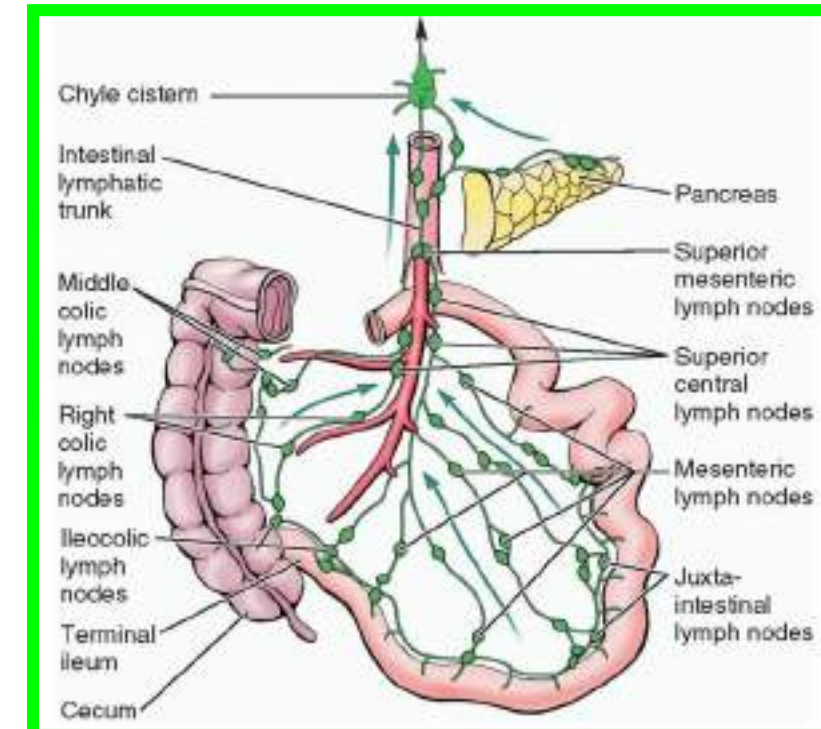
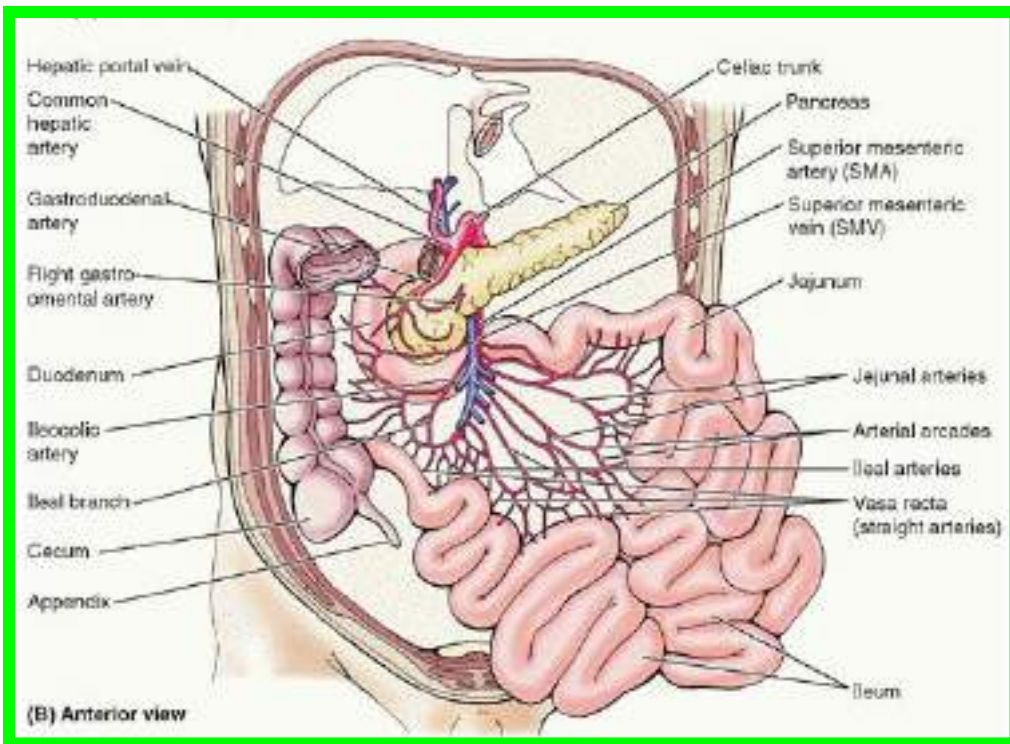
# Jejunum and Ileum

## Veins

The veins correspond to the branches of the **superior mesenteric artery** and drain into the **superior mesenteric vein**

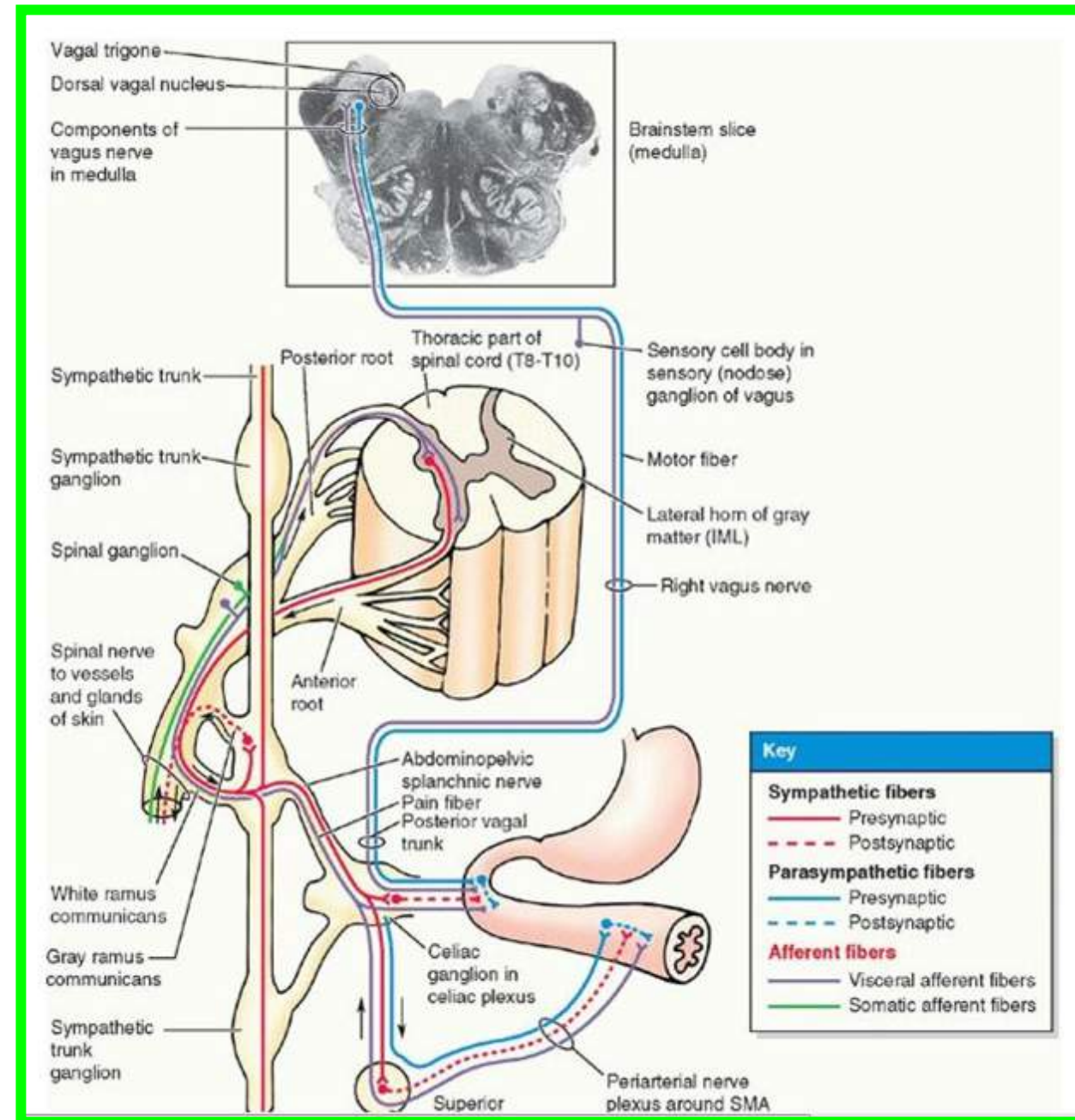
## Lymph Drainage

The lymph vessels pass through many intermediate mesenteric nodes and finally reach the superior mesenteric nodes, which are situated around the origin of the **superior mesenteric artery**



# Jejunum and Ileum

The nerves are derived from the **sympathetic and parasympathetic (vagus)** nerves from **the superior mesenteric plexus**



# Ileal Diverticulum

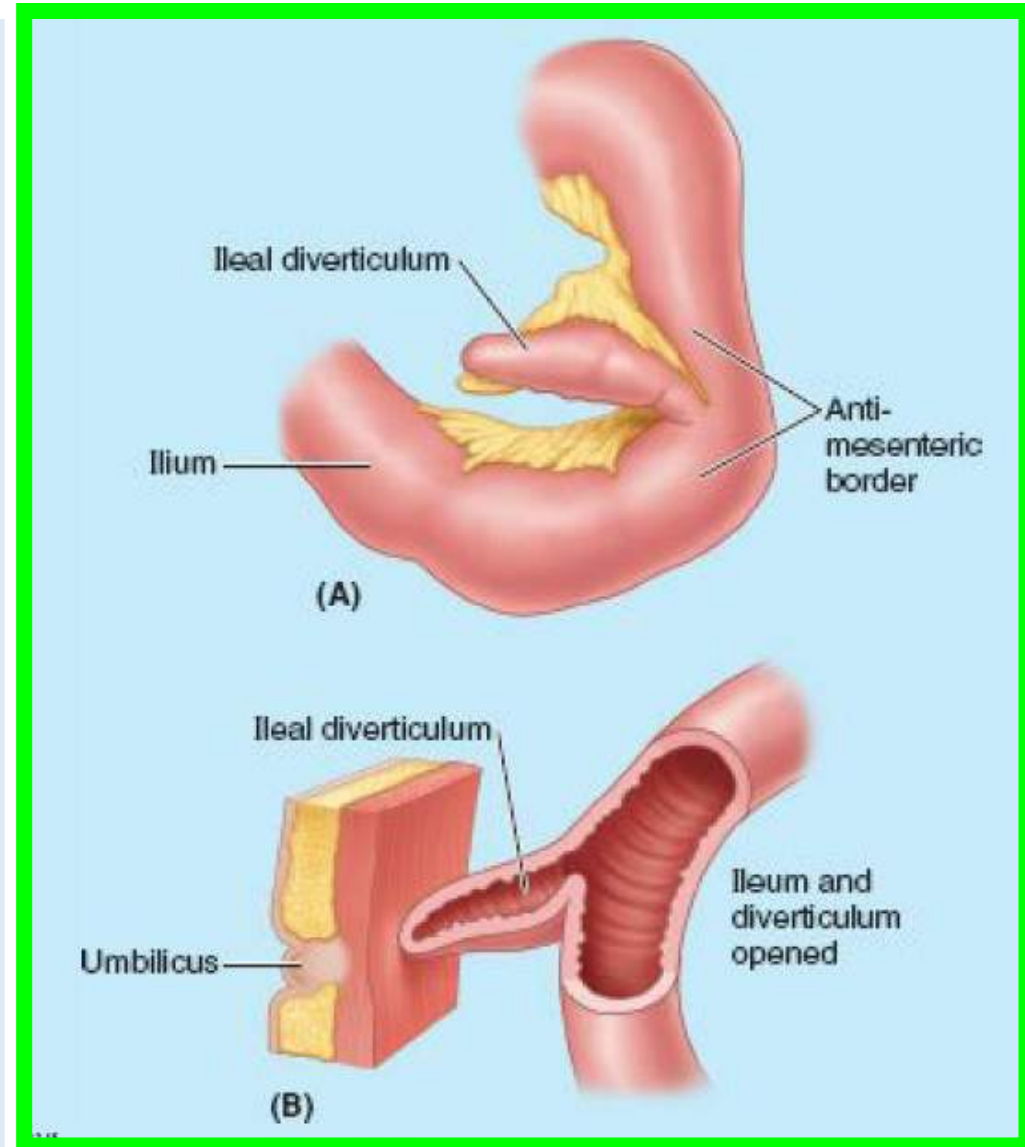
Tuesday 8 April 2025

Dr. Aiman AL-Maathydi

(or Meckel diverticulum) is a congenital anomaly that occurs in **1–2% of the population**. usually appears as a finger-like pouch. It is always at the site of the antimesenteric border of the ileum.

The diverticulum is usually located **30–60 cm** from the ileocecal junction in **infants** and **50 cm** in **adults**.

An ileal diverticulum may become inflamed and **produce pain mimicking that produced by appendicitis**.



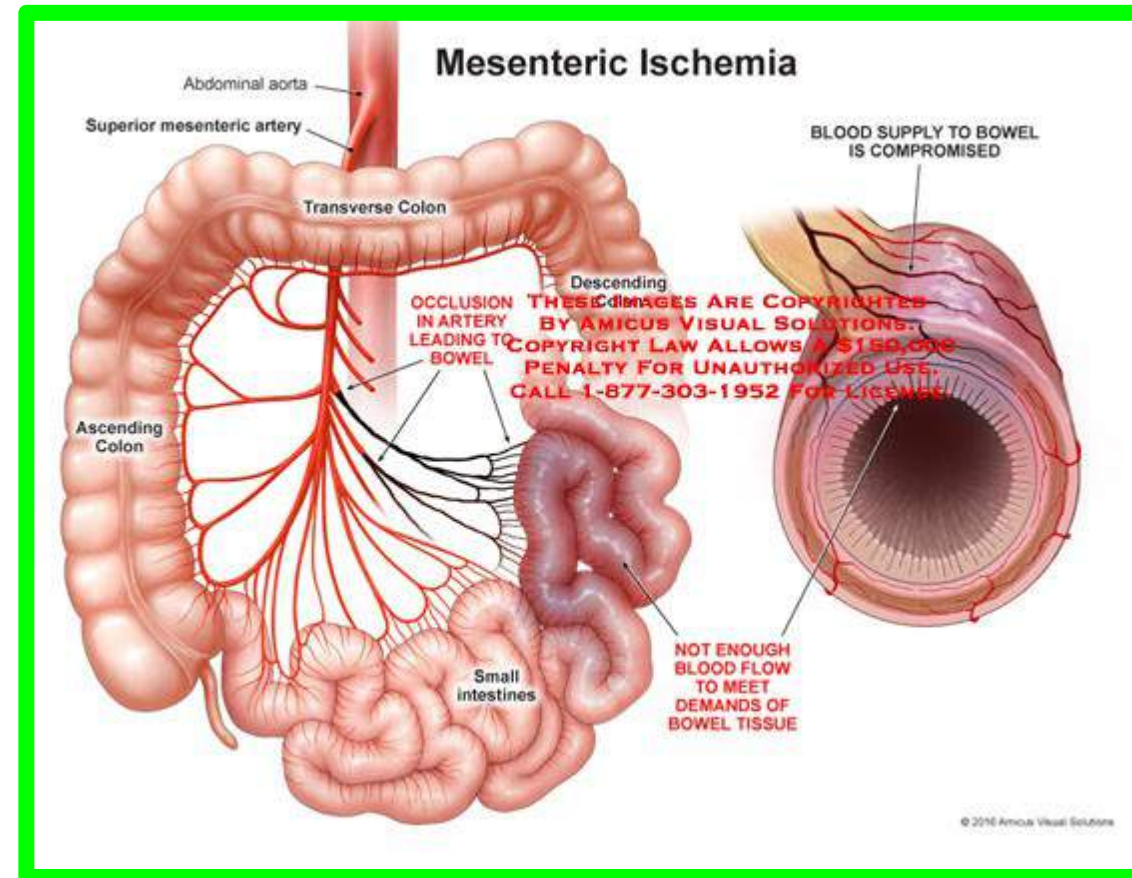


# Ischemia of Intestine

Occlusion of the vasa recta by emboli (e.g., blood clots) results in **ischemia of the part of the intestine** concerned. If the ischemia is severe, necrosis (tissue death) of the involved segment results **and ileus** (obstruction of the intestine) of the paralytic type occurs.

Ileus is accompanied by a severe colicky pain, along with abdominal distension, vomiting, and often fever and dehydration.

If the condition is diagnosed early (e.g., using a **superior mesenteric arteriogram**), the obstructed part of the vessel may be **cleared surgically**.







***Dr Aiman Qais AL Maathydi***  
***Tuesday 8 April 2025***