

Connective Tissue



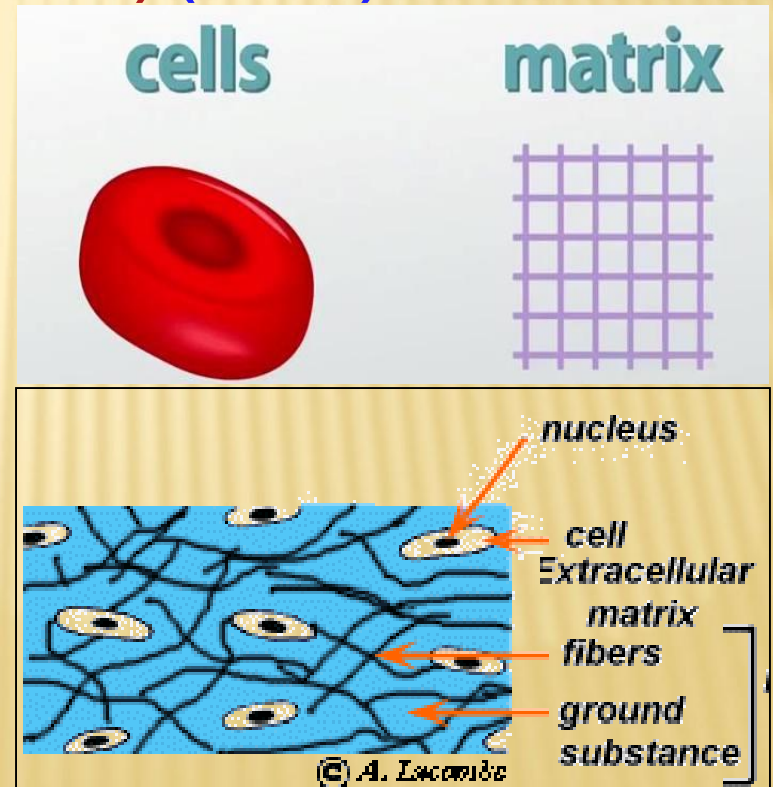
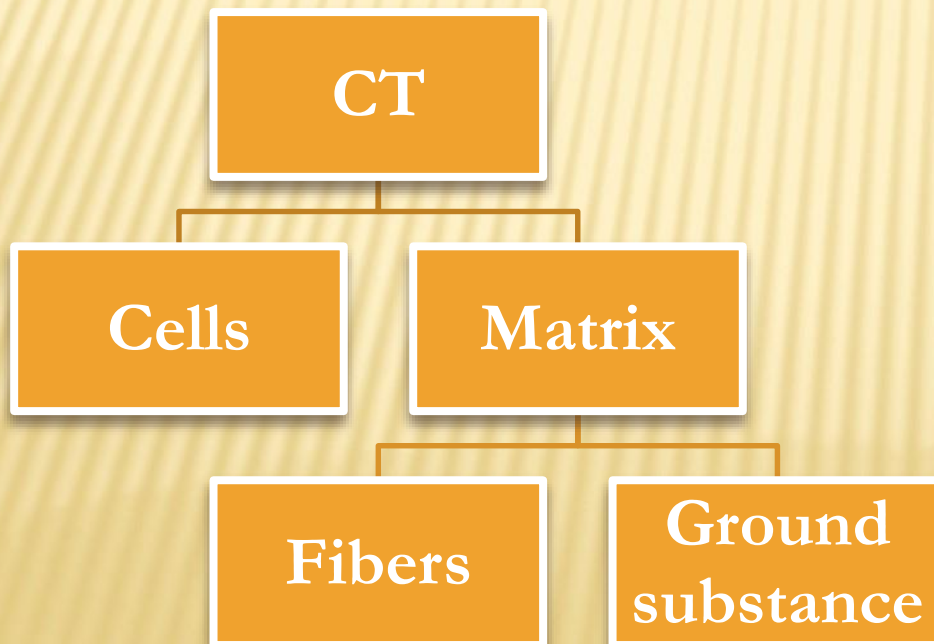
By

DR. HEBA HASSAN

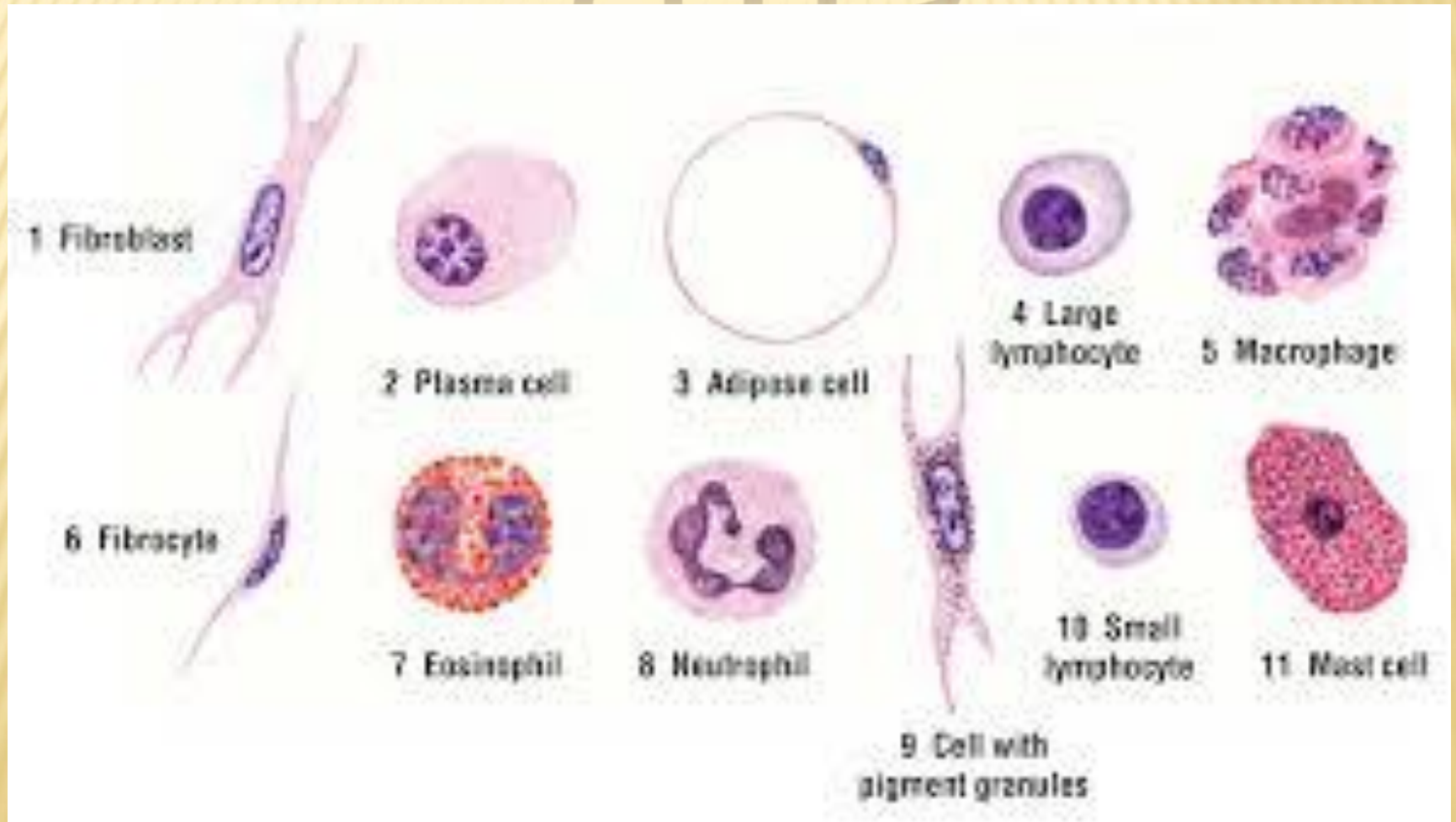
Structure of C.T.

a - Connective tissue cells (less.)

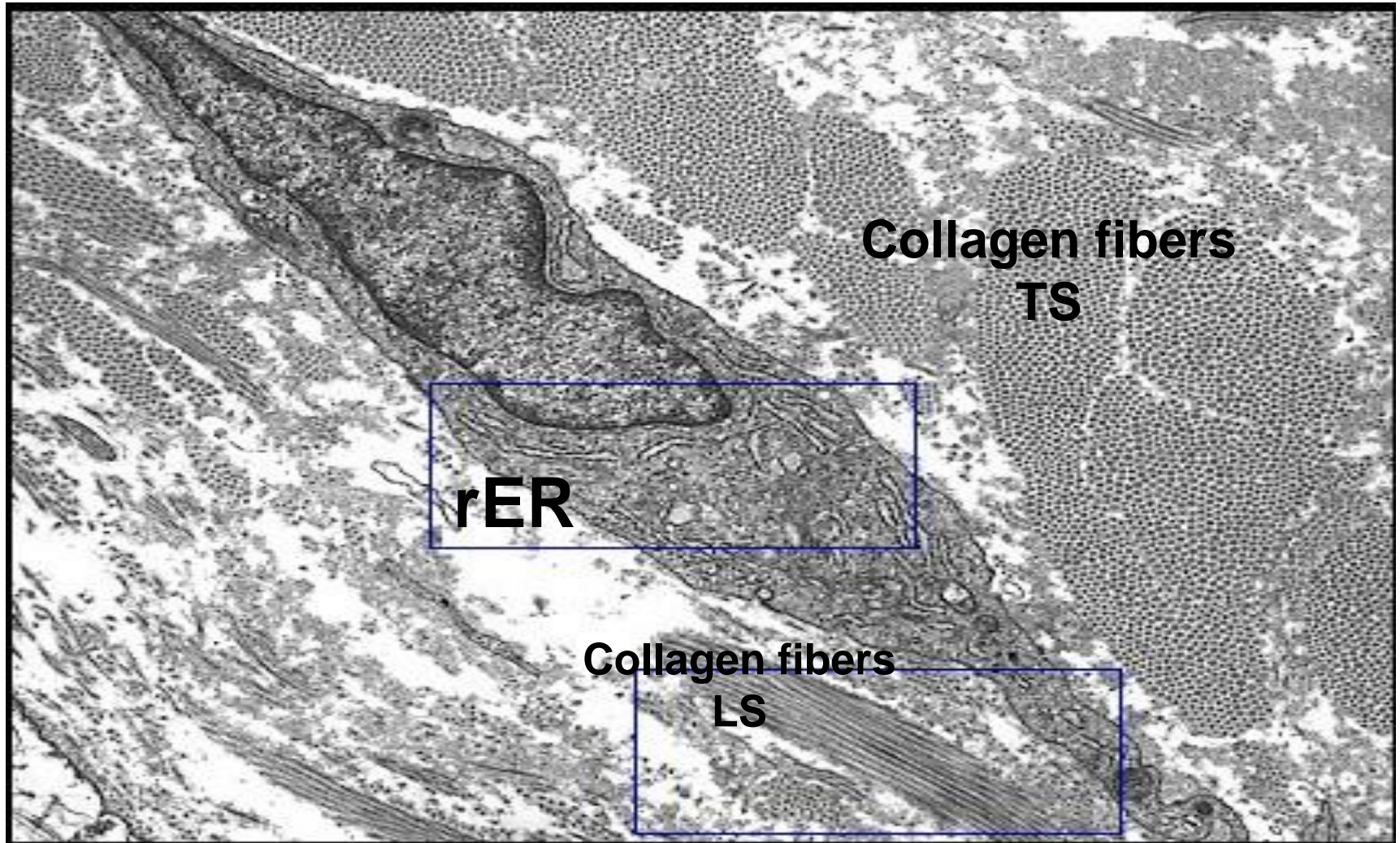
b - Intercellular substance (Matrix) (More).



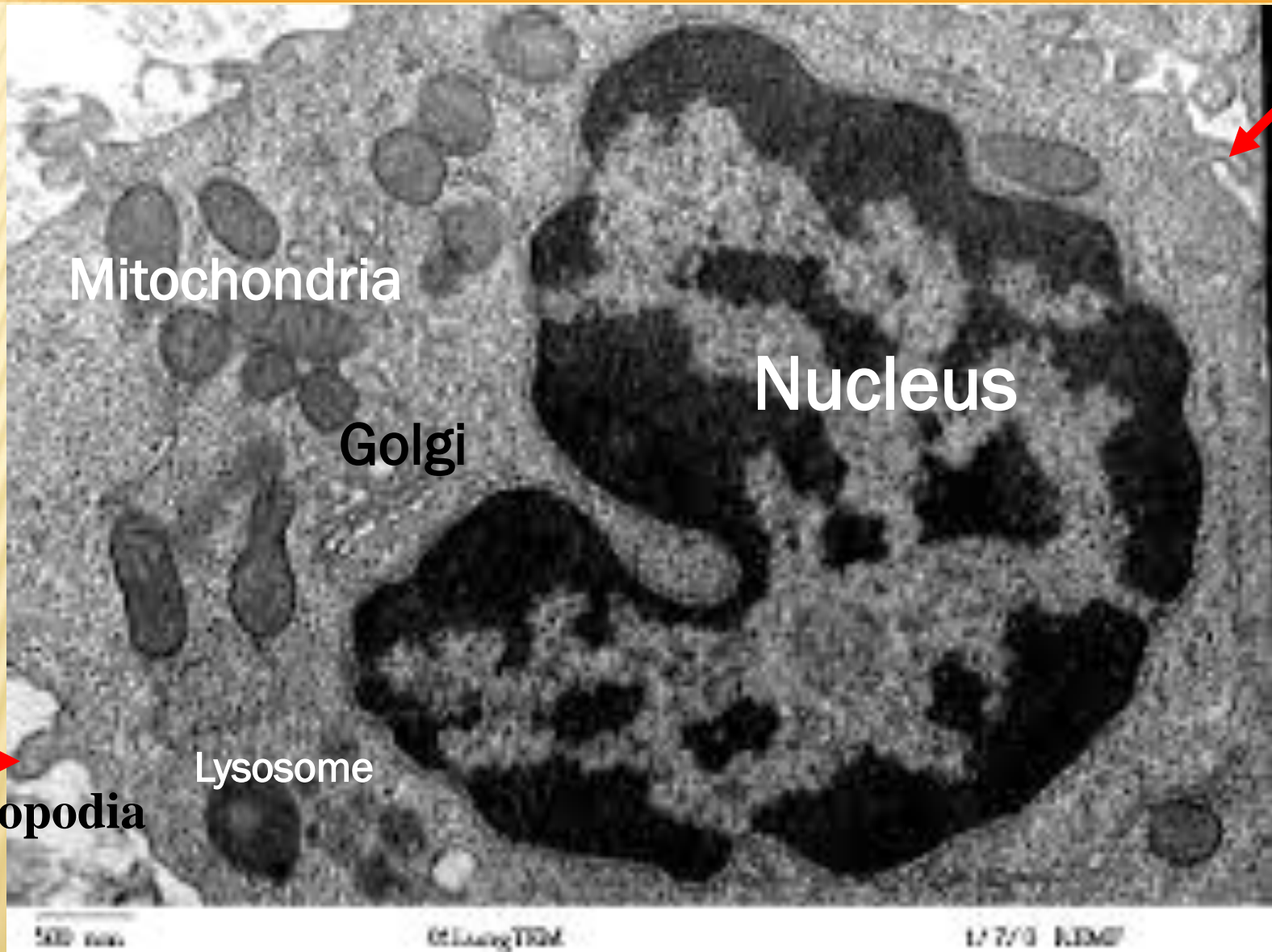
CONNECTIVE TISSUE CELLS



EM of Fibroblast and collagen fibers

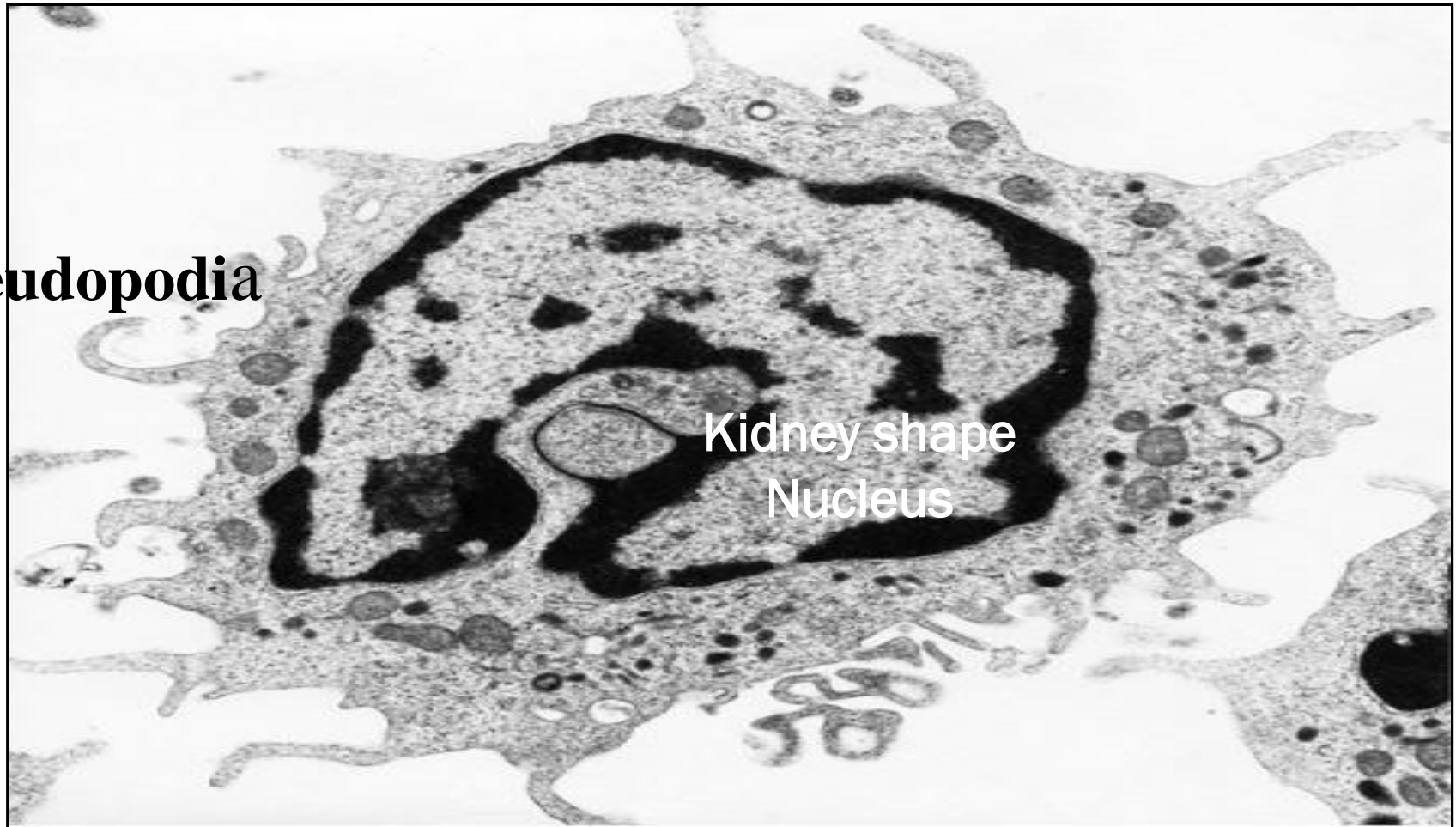


EM PICTURE OF MACROPHAGE



Macrophage)M.E)

pseudopodia

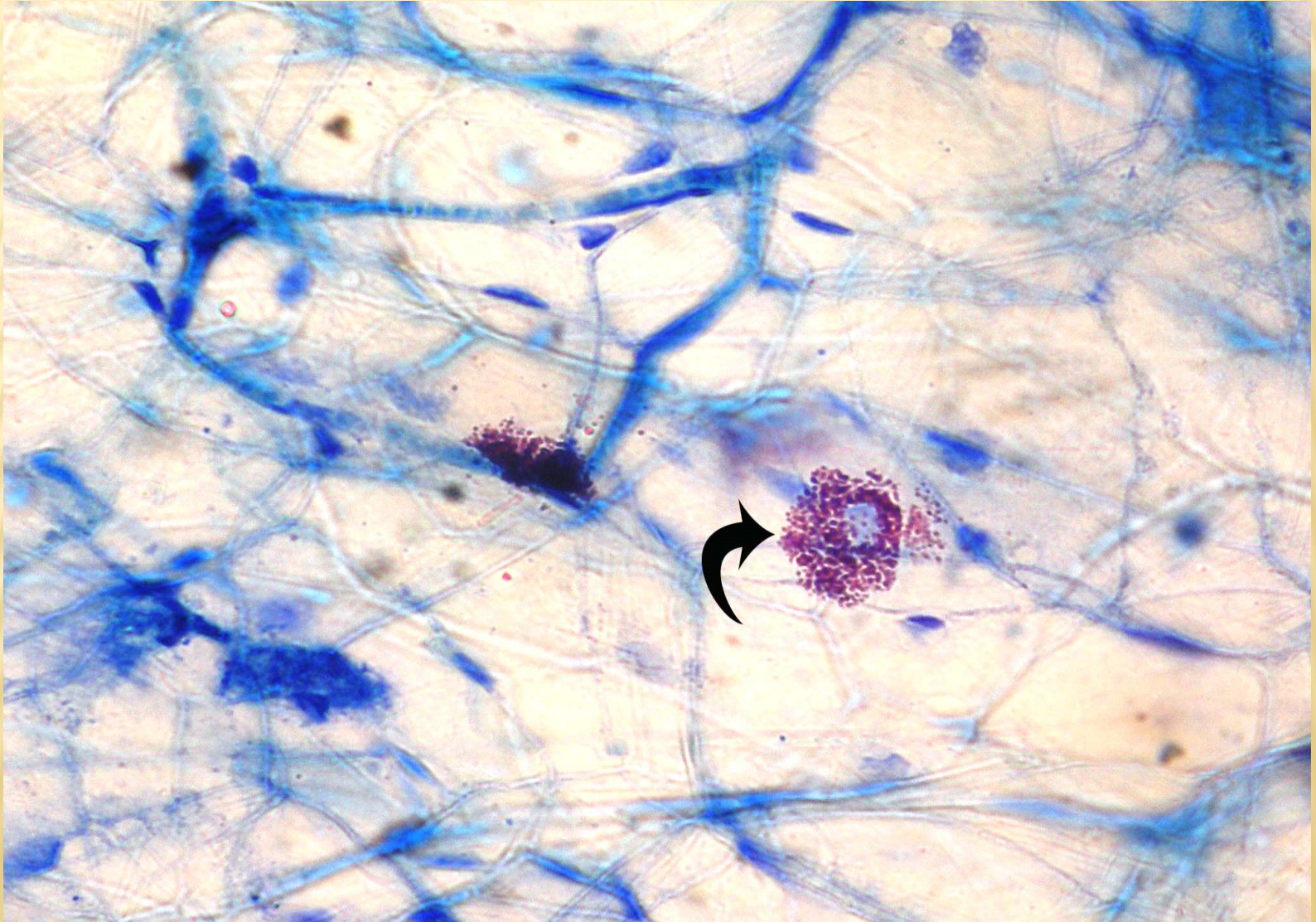


Kidney shape
Nucleus

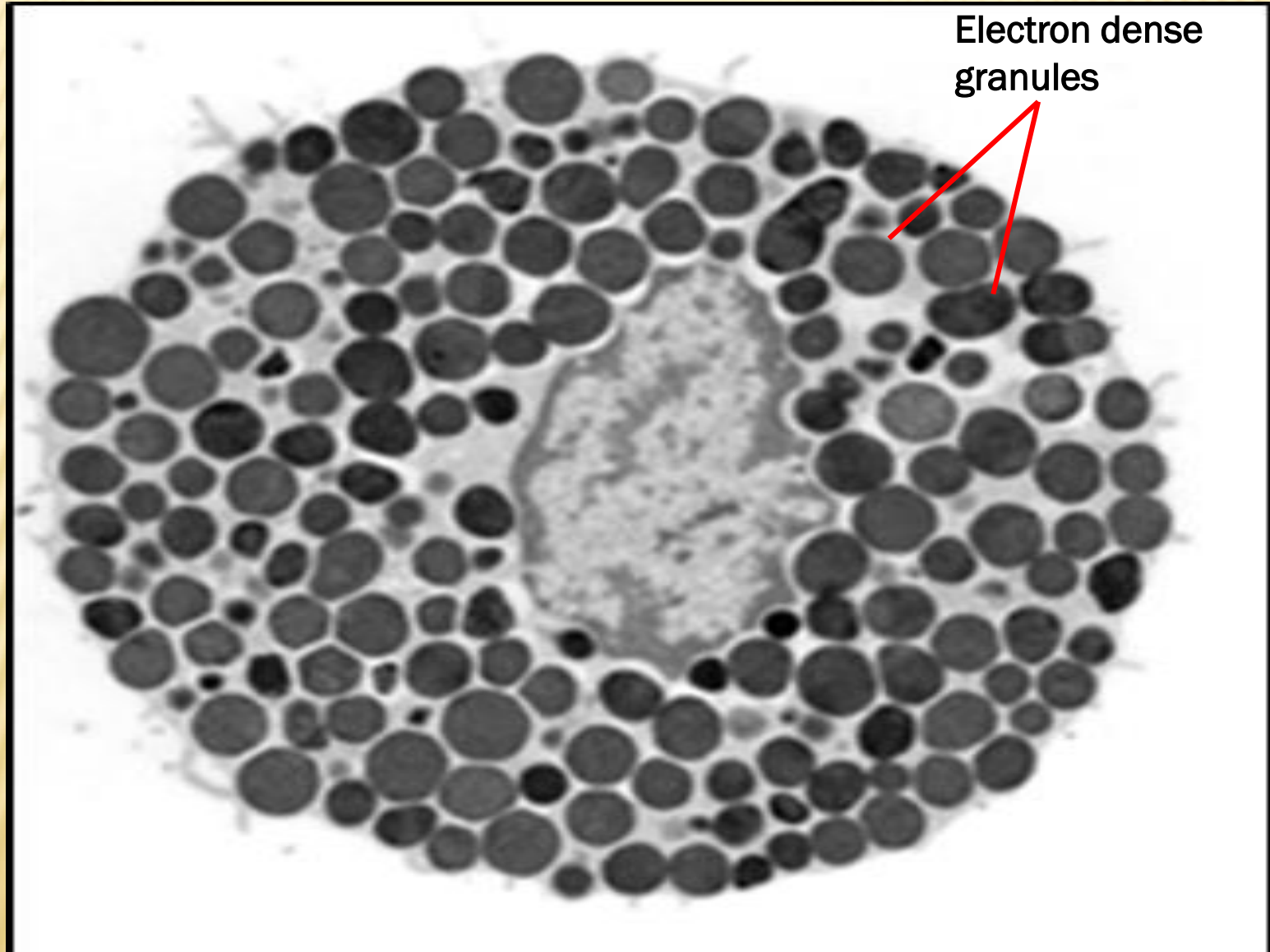
Source: Lichtman MA, Shafer MS, Felgar RE, Wang N:
Lichtman's Atlas of Hematology: <http://www.accessmedicine.com>
Copyright © The McGraw-Hill Companies, Inc. All rights reserved.

MAST CELL STAINED WITH TOLUIDINE BLUE

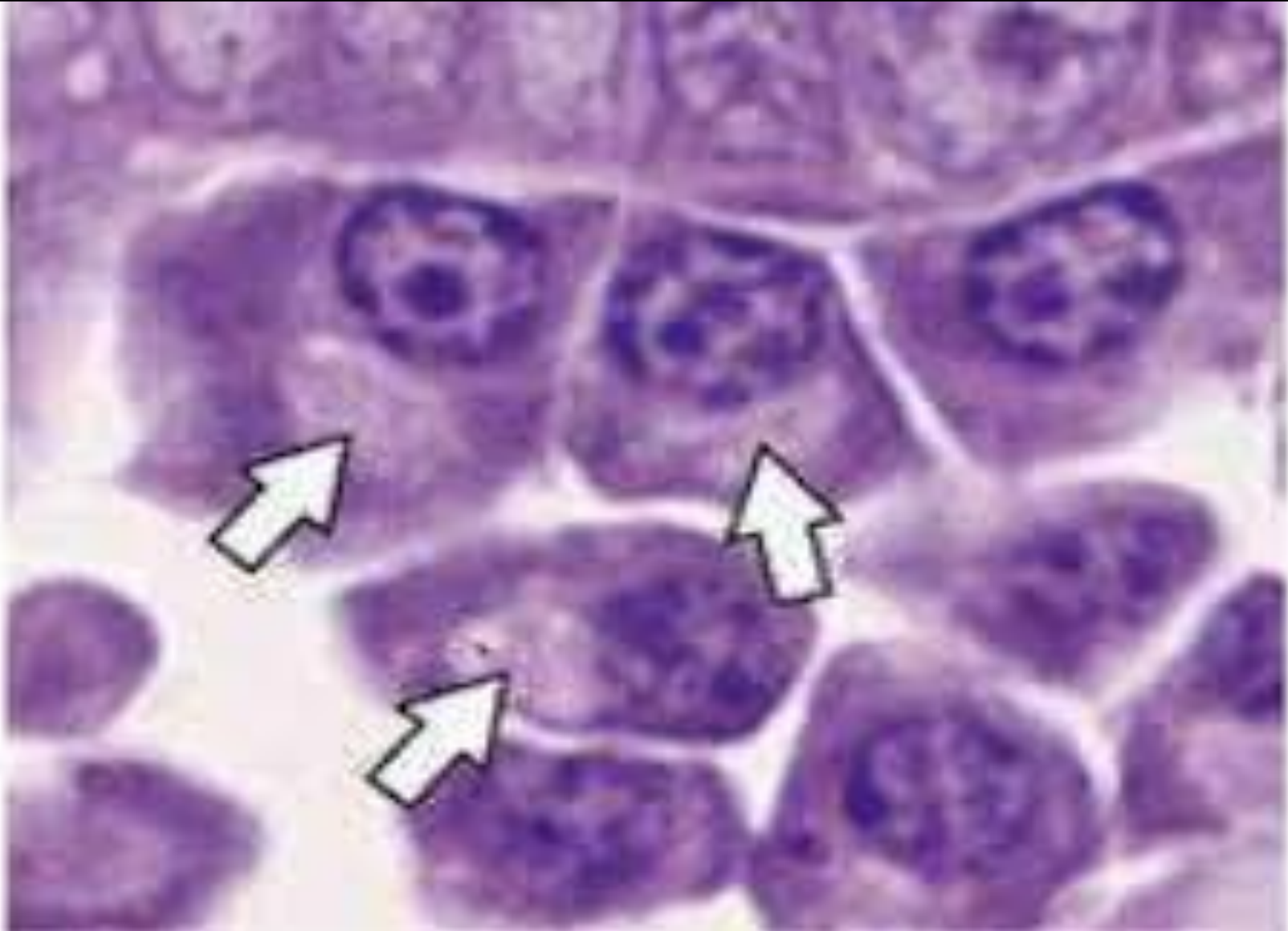
The granules are metachromatic stained red with toluidine blue



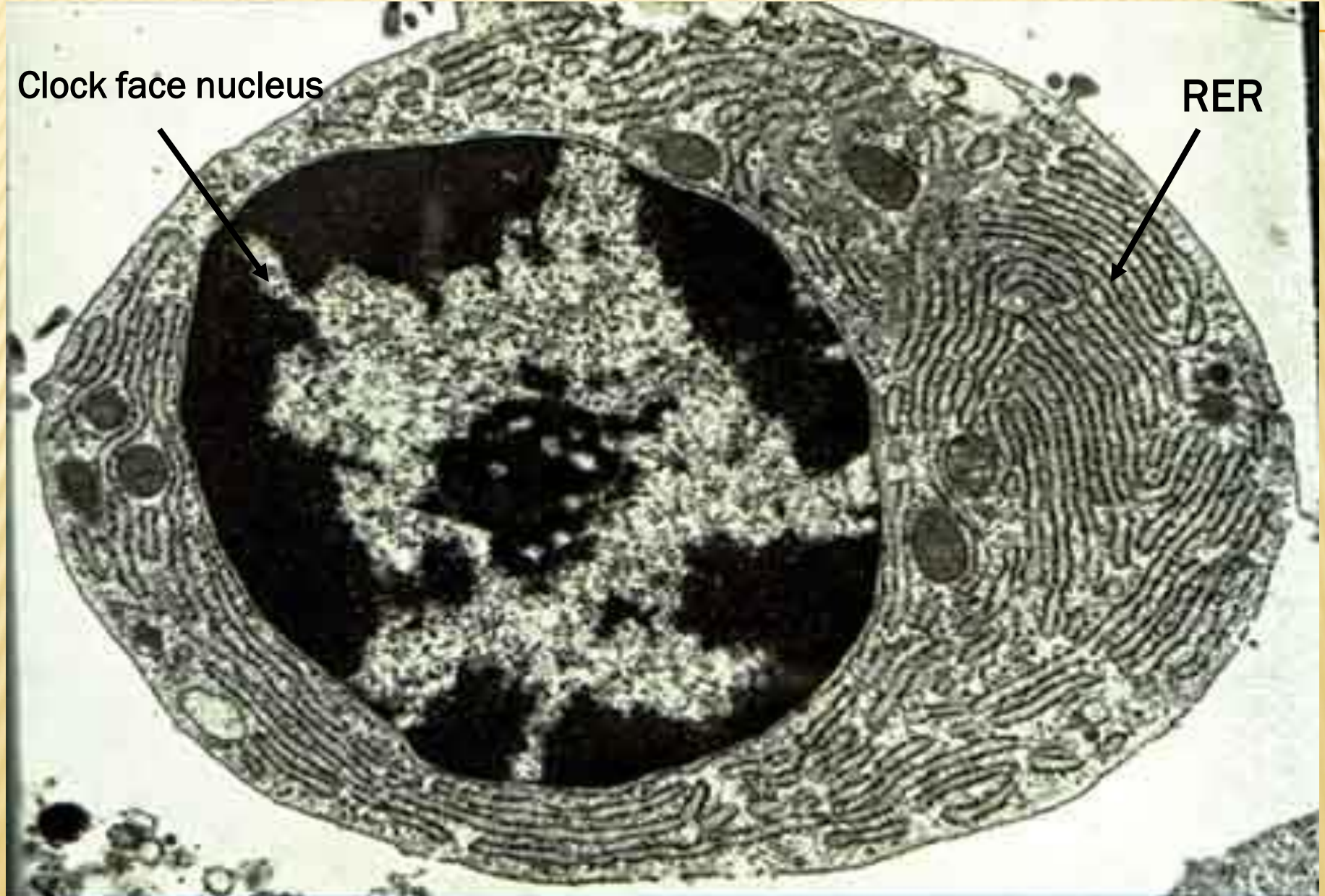
EM PICTURE OF MAST CELL



Plasma cell (Negative Golgi image)



EM PICTURE OF PLASMA CELL



CLASSIFICATION OF C.T.

```
graph TD; A[CLASSIFICATION OF C.T.] --> B[C.T. proper]; A --> C[Specialized C.T.]; A --> D[Supporting C.T.]; B --> B1[- Loose C.T.]; B --> B2[- Dense C.T.]; C --> C1[- Adipose]; C --> C2[- Reticular]; C --> C3[- Mucous]; C --> C4[- Hemopoietic tissue]; D --> D1[- Bone]; D --> D2[- Cartilage];
```

C.T. proper

- Loose C.T.
- Dense C.T

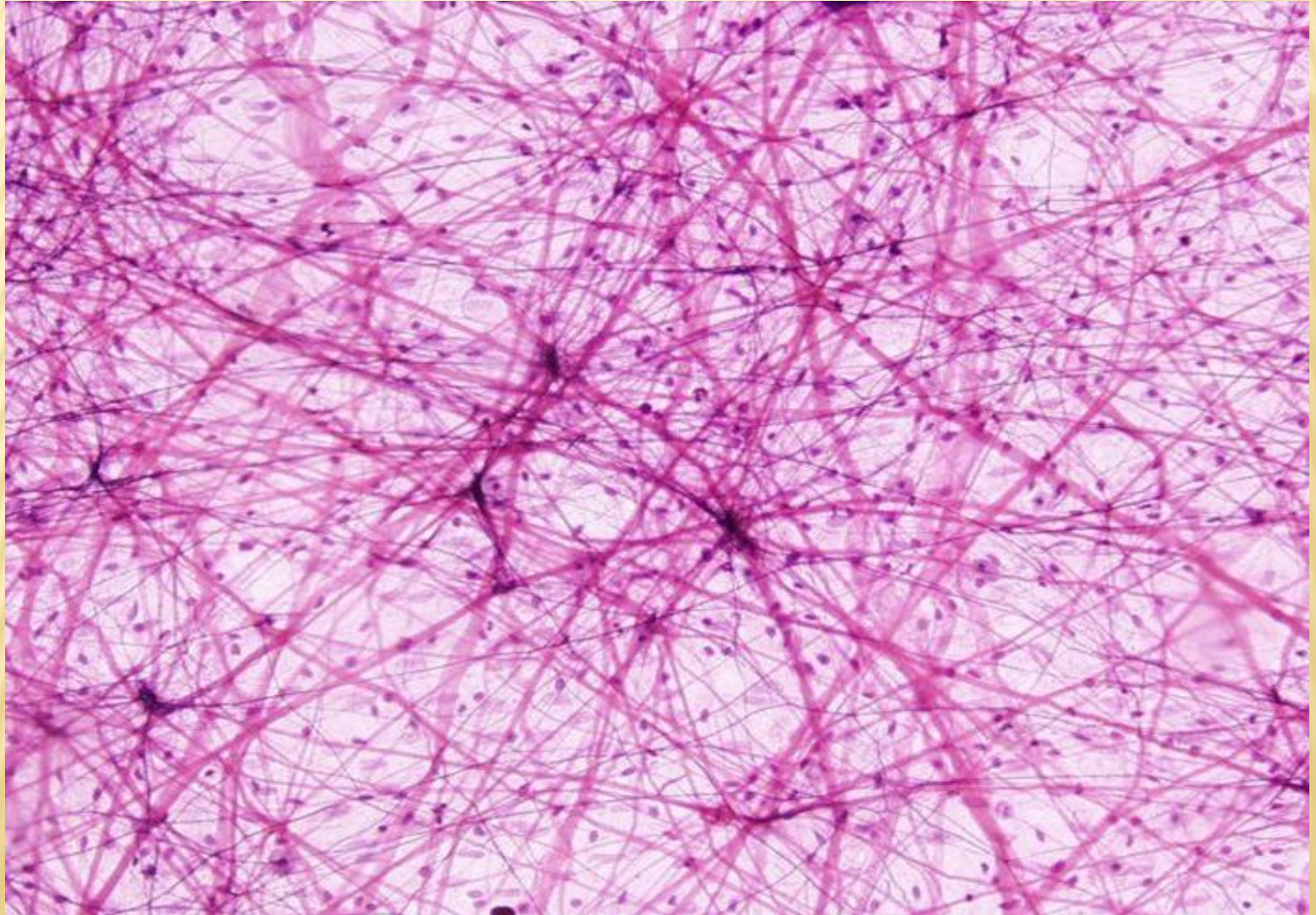
Specialized C.T.

- Adipose
- Reticular
- Mucous
- Hemopoietic tissue

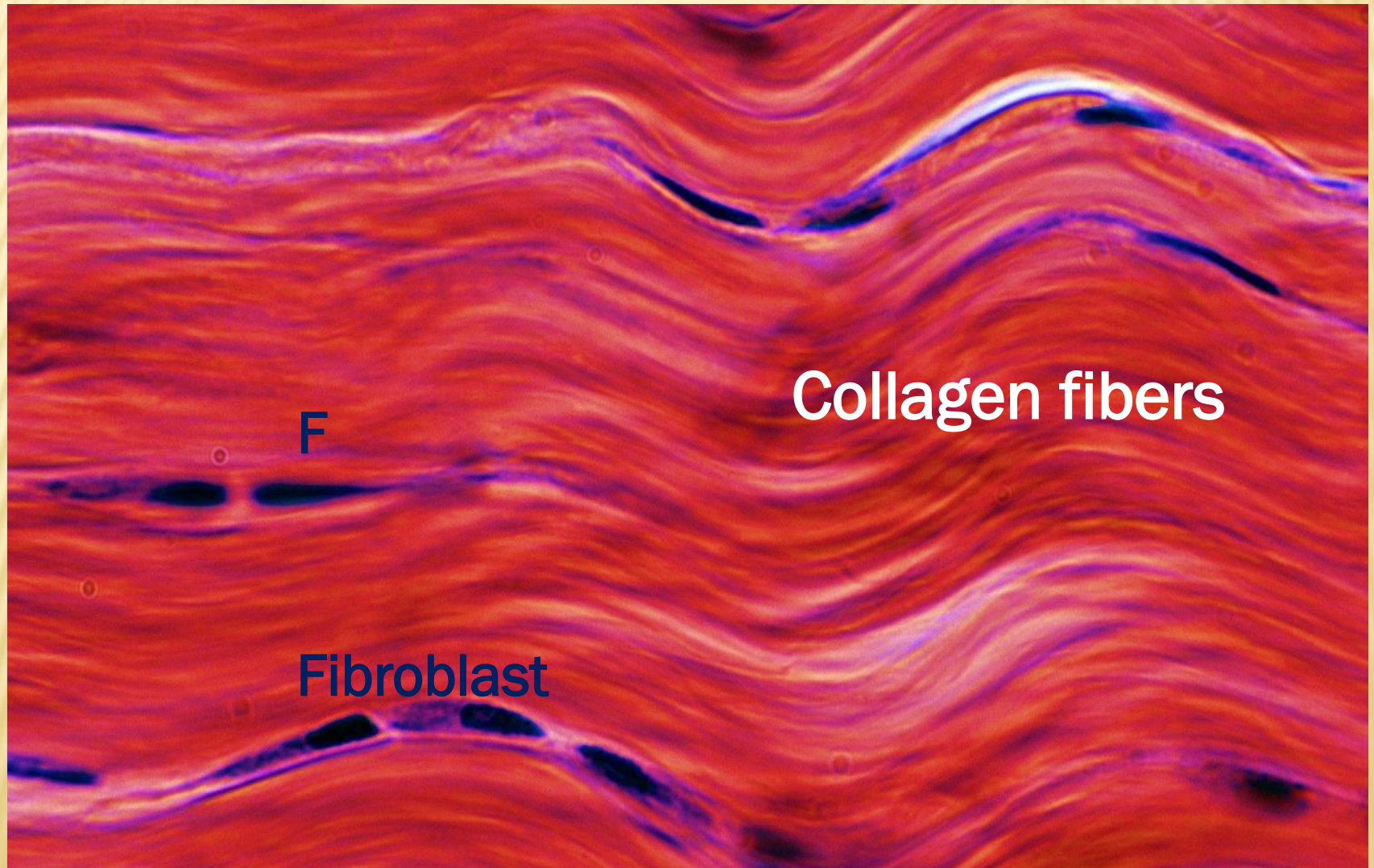
Supporting C.T.

- Bone
- Cartilage

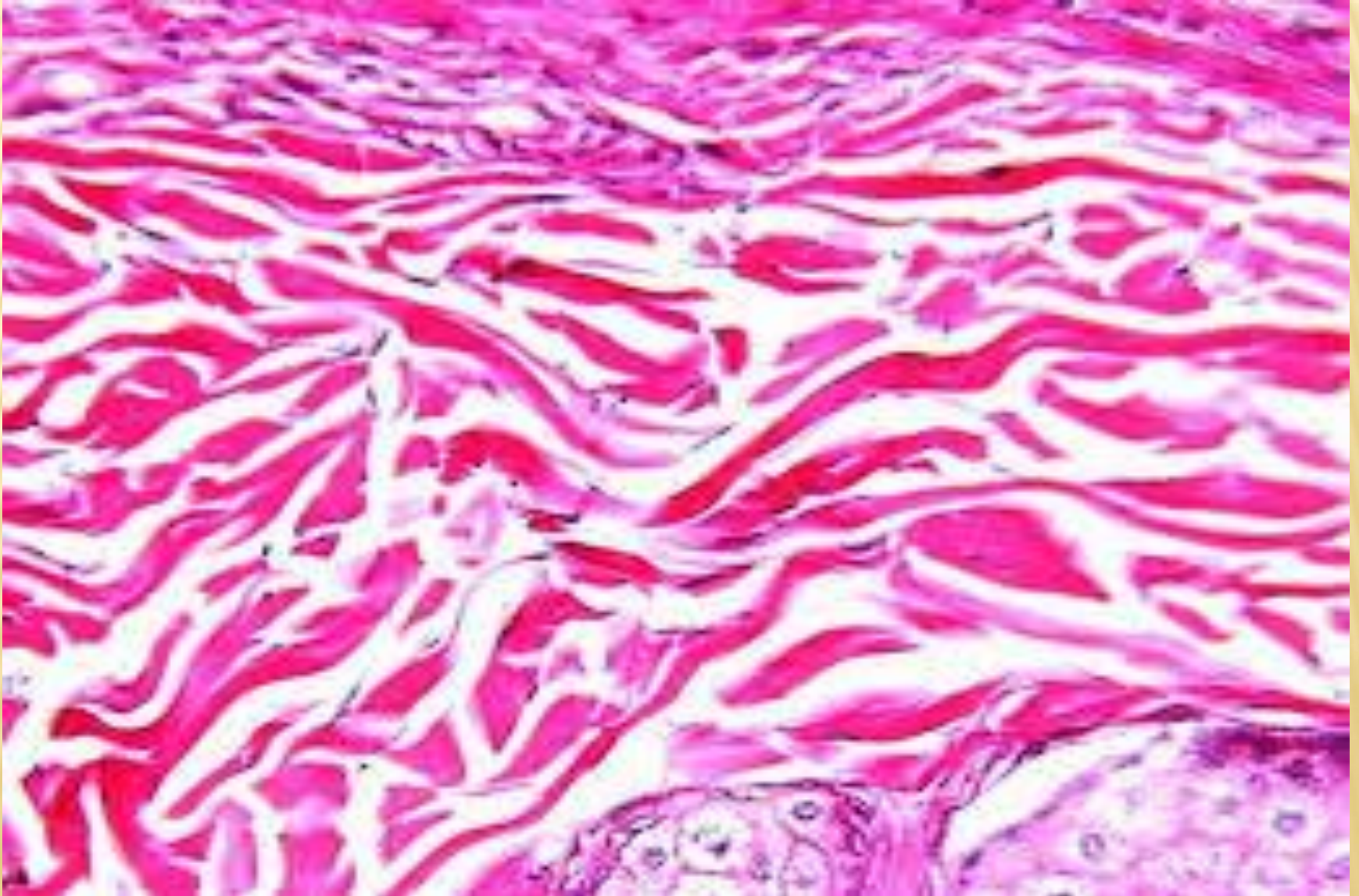
LOOSE C.T



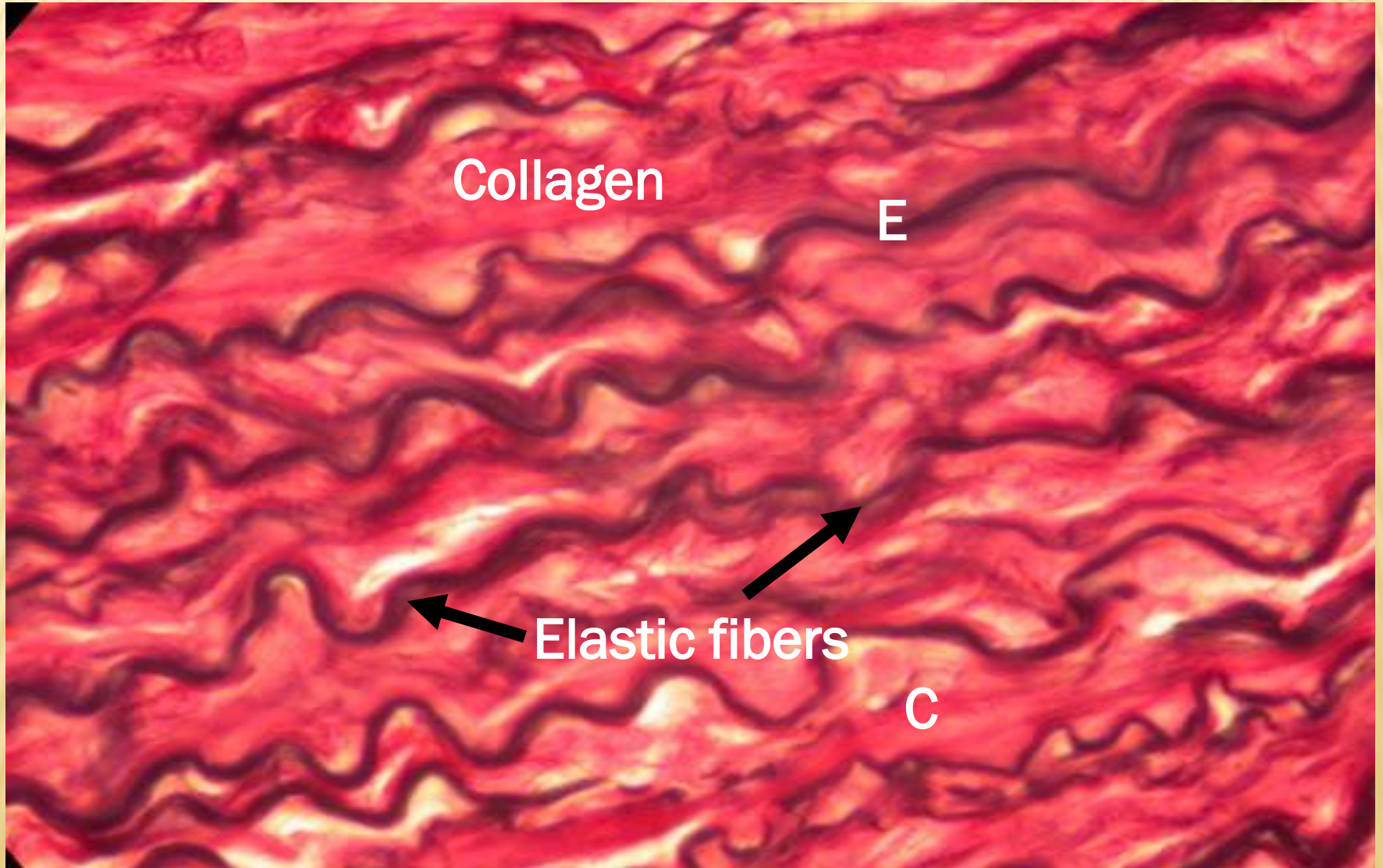
DENSE REGULAR C.T



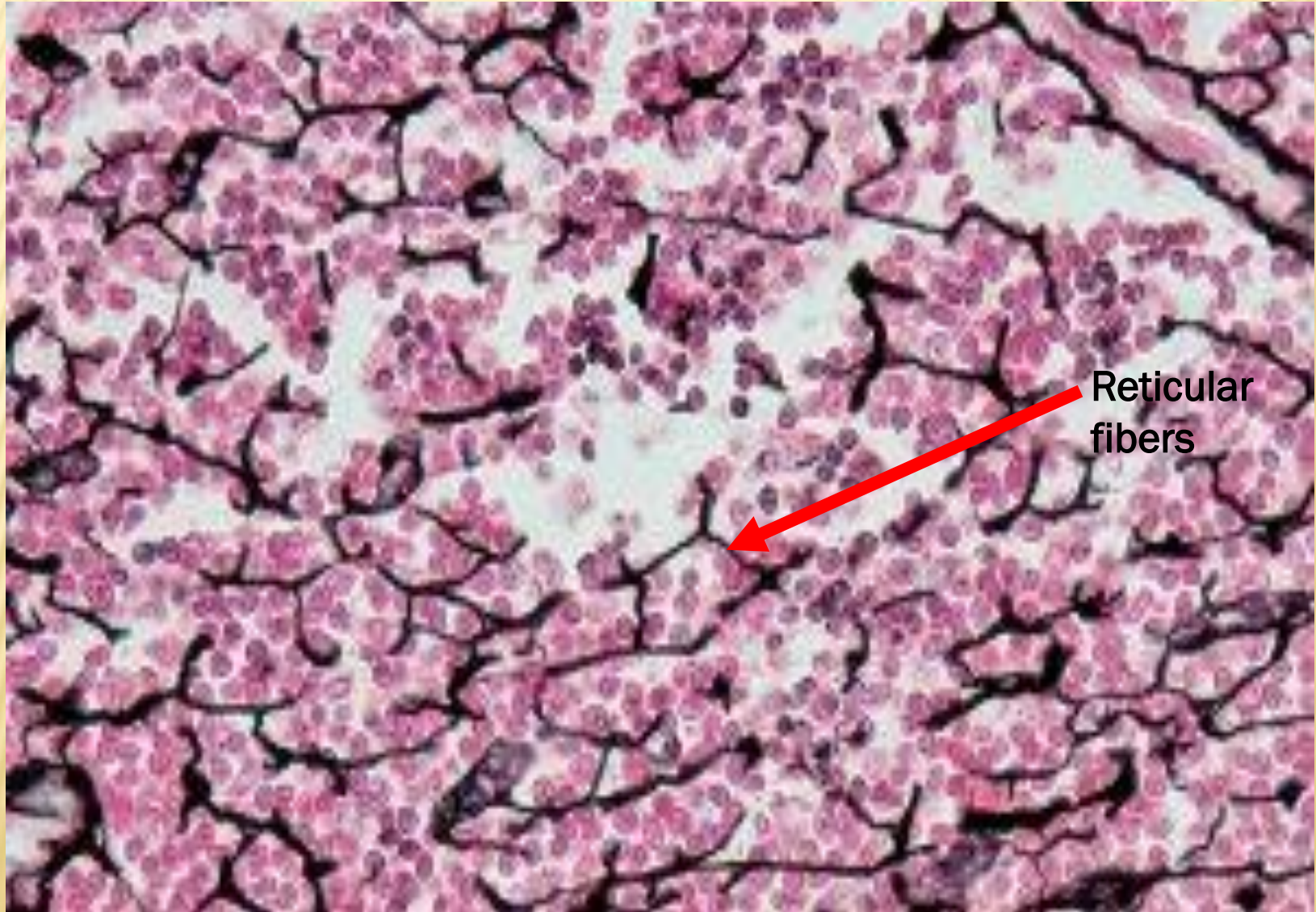
DENSE IRREGULAR C.T



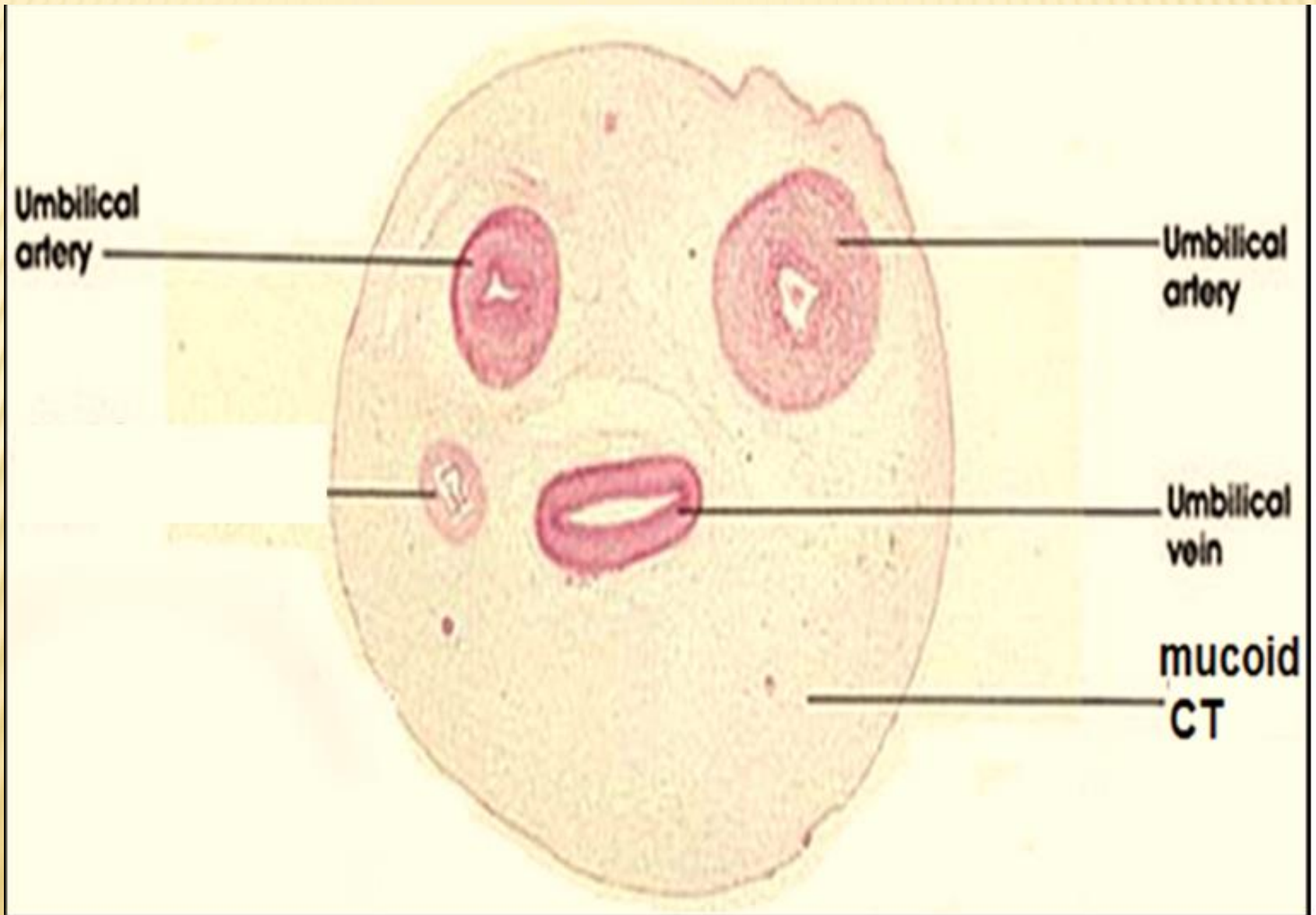
ELASTIC C.T



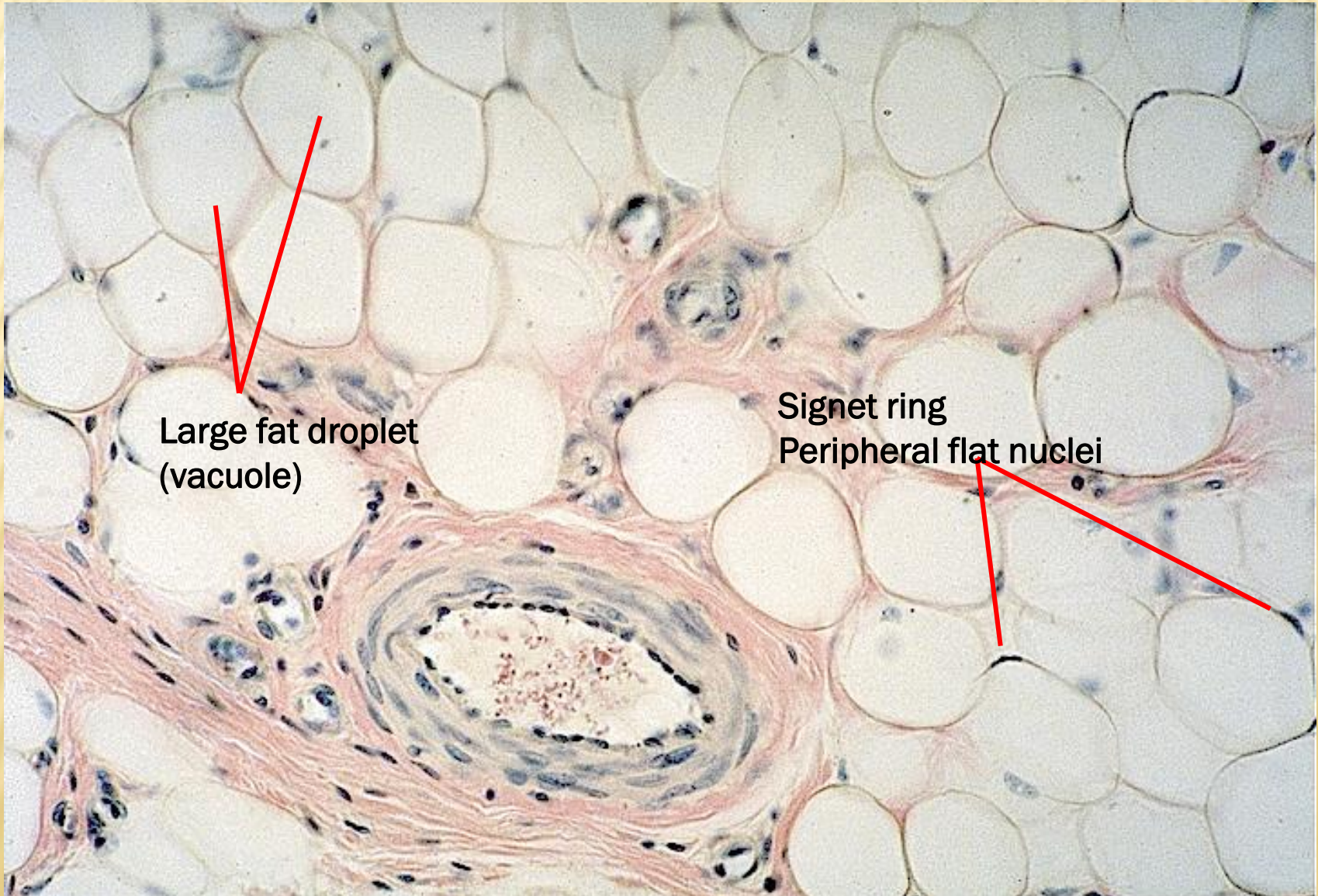
RETICULAR C.T (STAINED BLACK WITH SILVER STAIN)



UMBILICAL CORD (MUCOID C.T)



UNILOCULAR ADIPOSE TISSUE:



MULTILOCULAR (BROWN) ADIPOSE TISSUE

