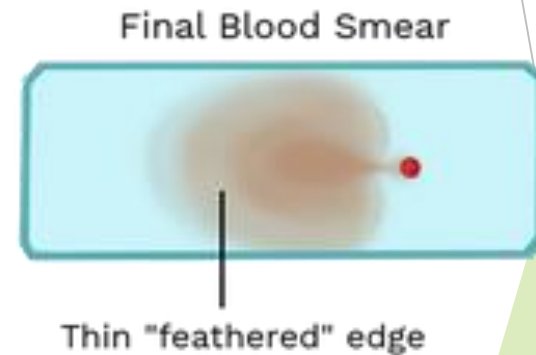
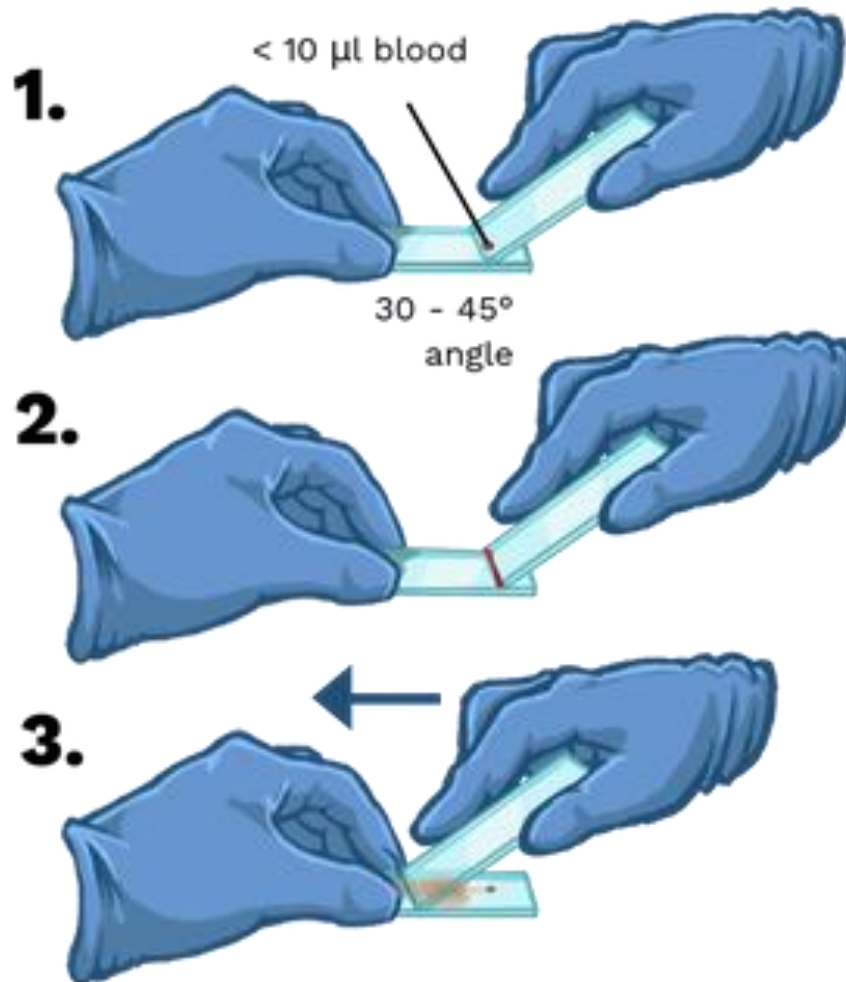


# **BLOOD**

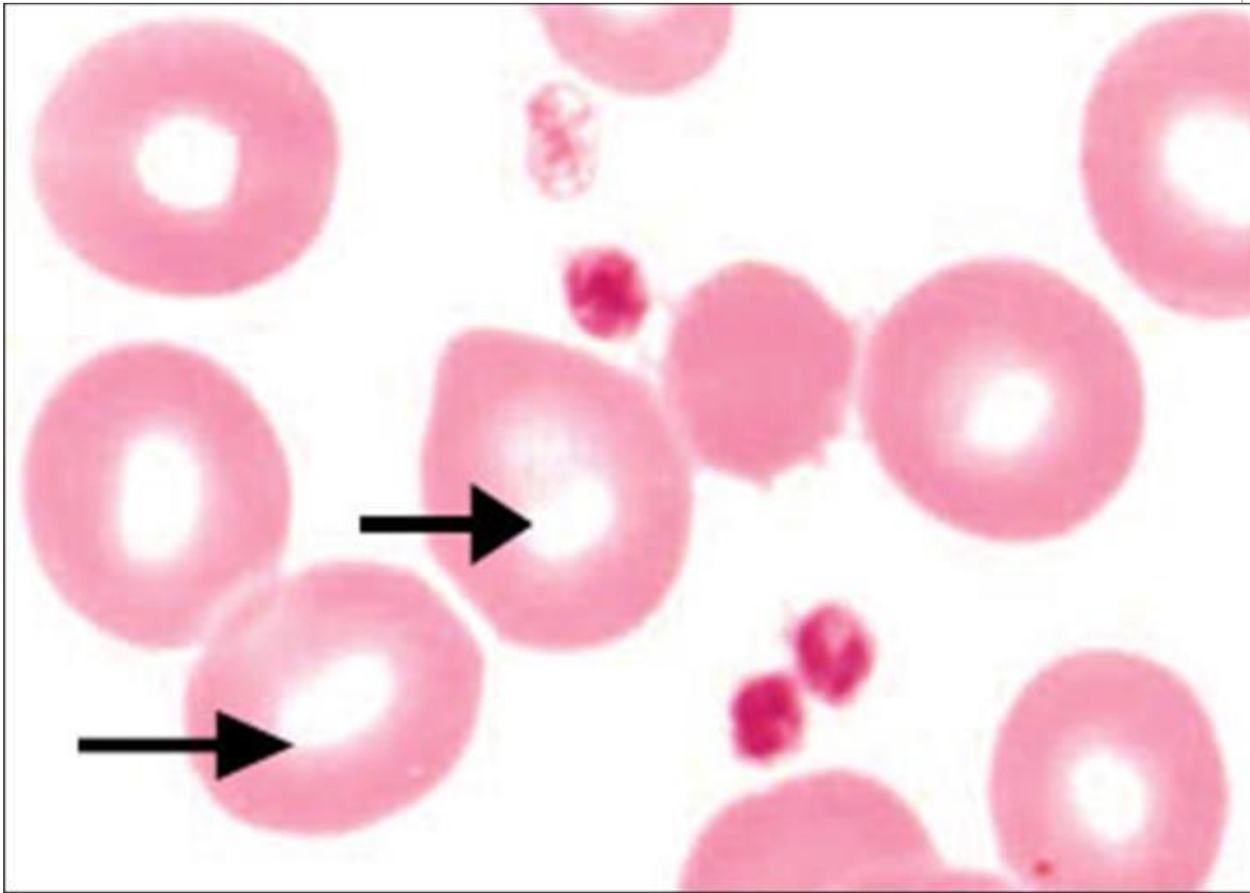
## **(Lab)**

► **DR. Heba Hassan**

# Blood smear (Leishman stain)

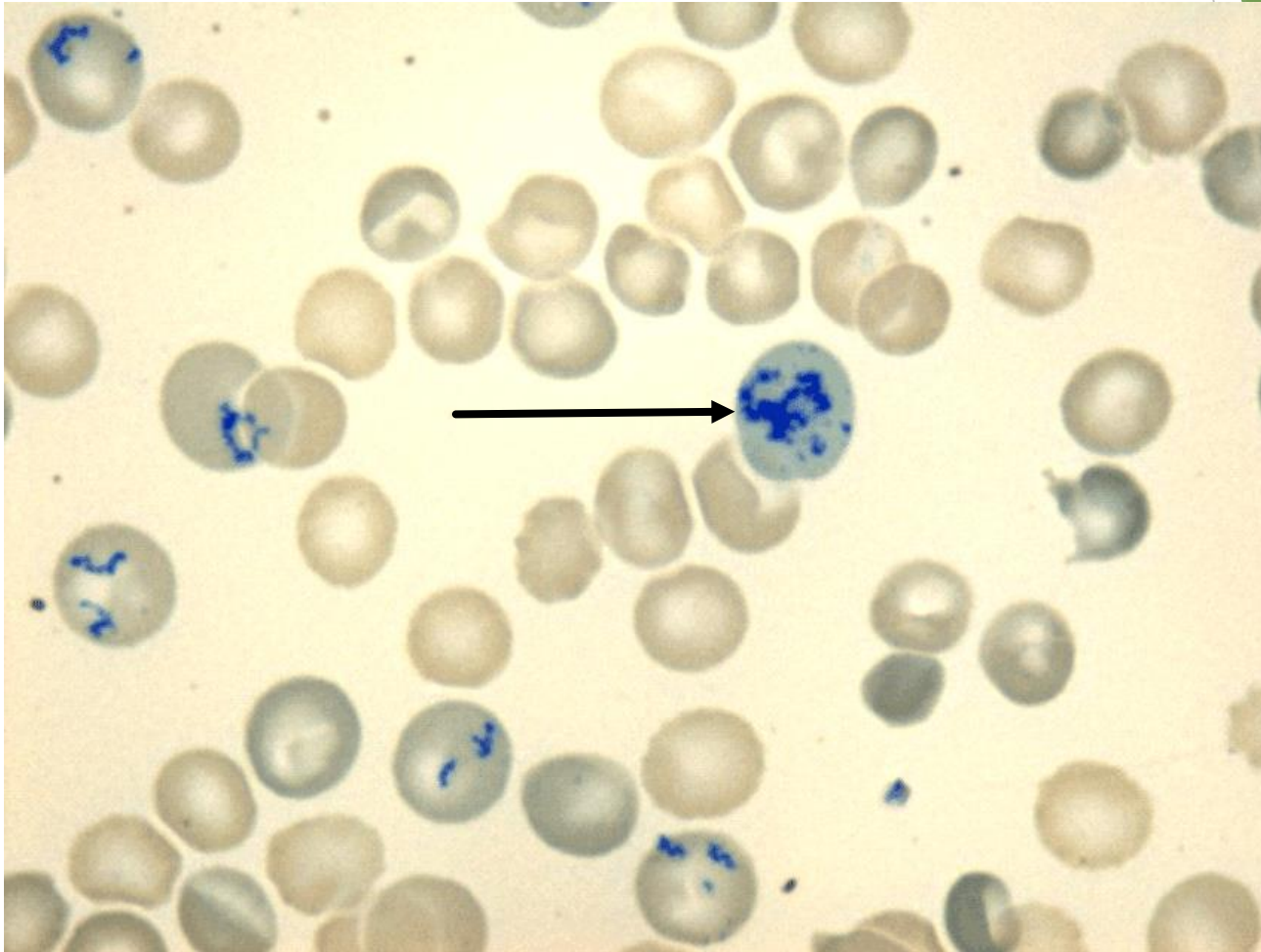


# ***Red Blood Cells (RBCs)***



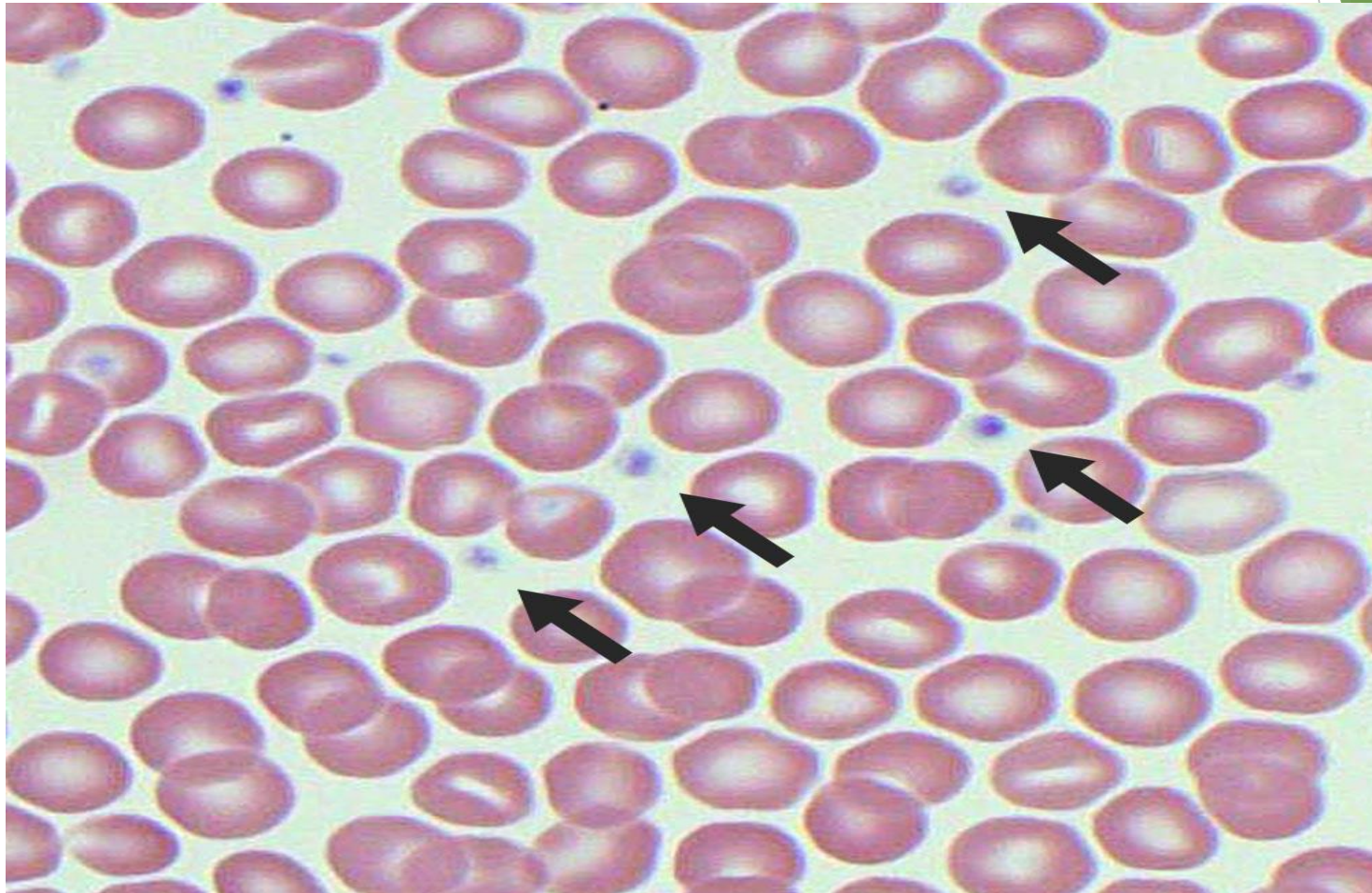
- ▶ ***RBCs that display rounded biconcave discs.***

# Reticulocyte (brilliant cresyl blue)

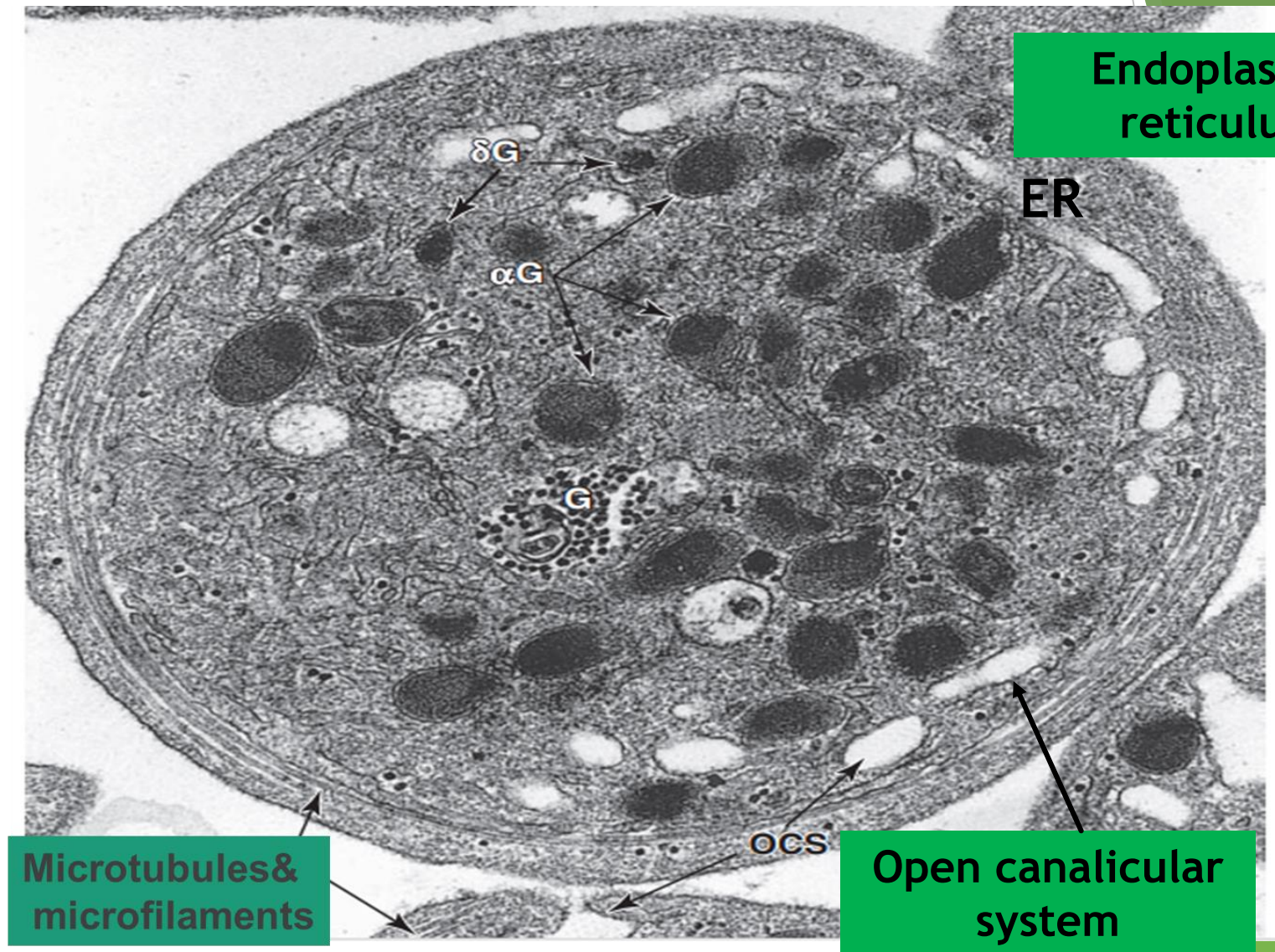




# *Platelets*

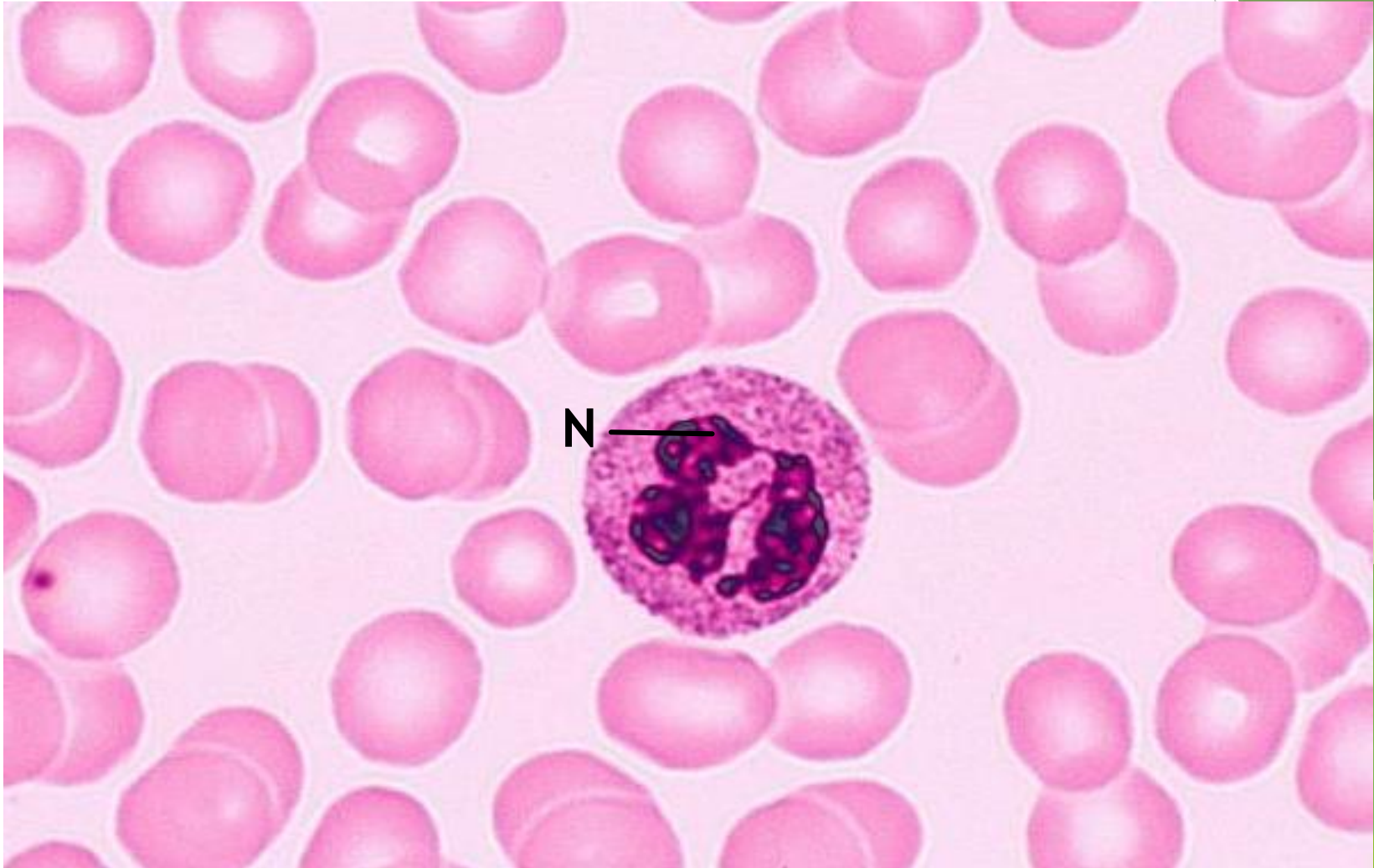


# *EM of Platelets*

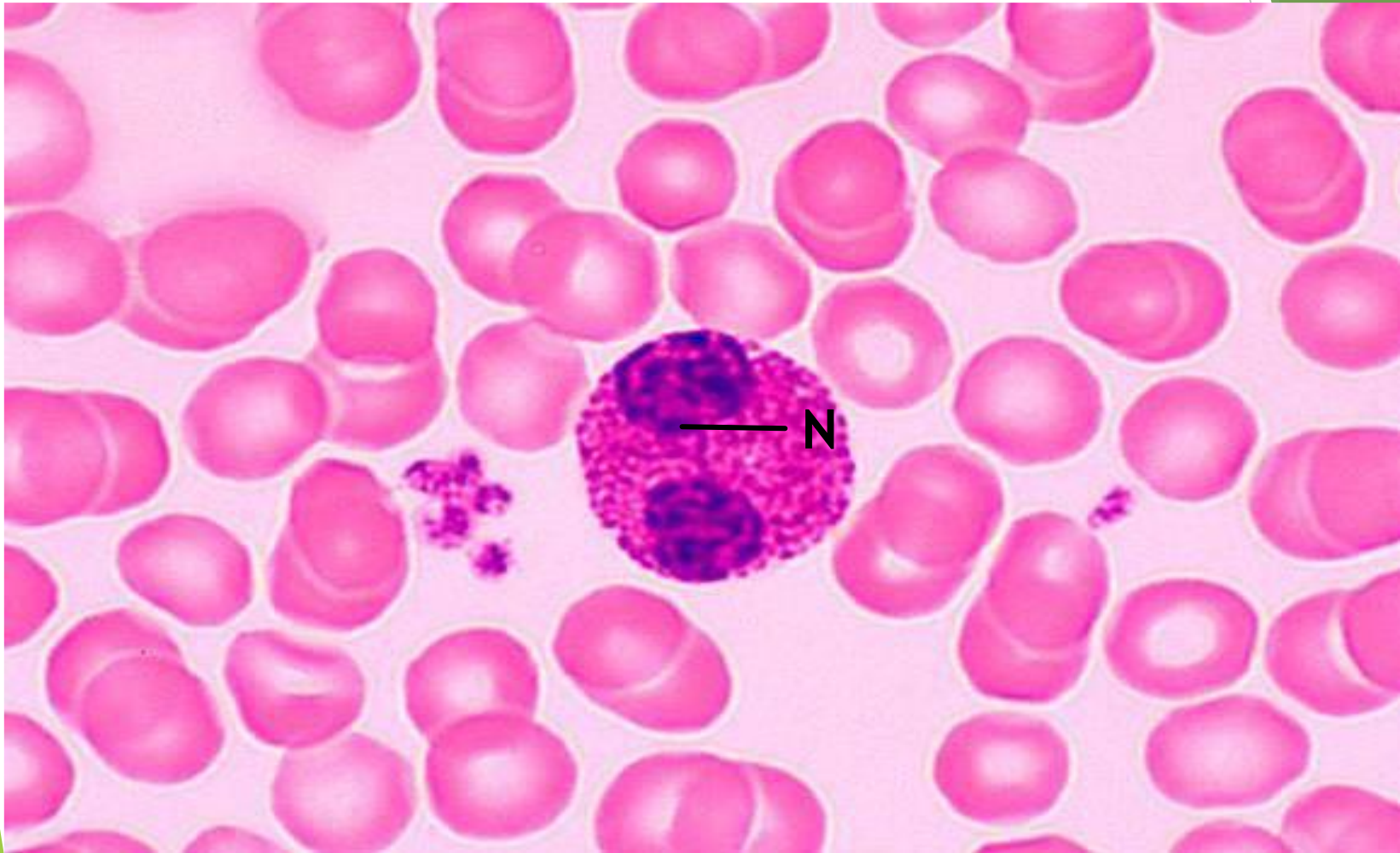




1- **Neutrophils** with segmented nucleus (N) and neutrophilic granules.

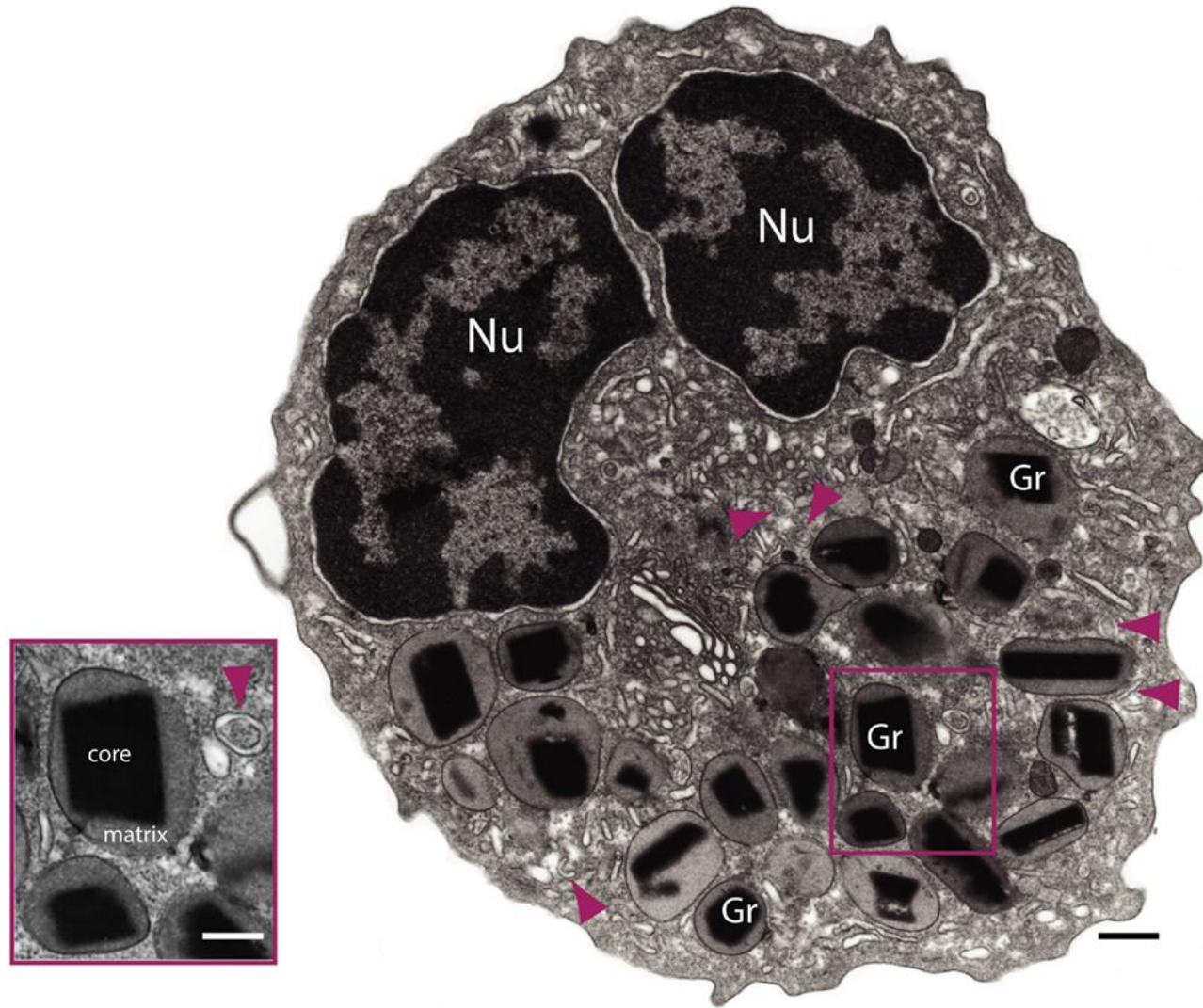


2- **Eosinophils** with horse-shoe shaped nucleus (N) and eosinophilic granules.

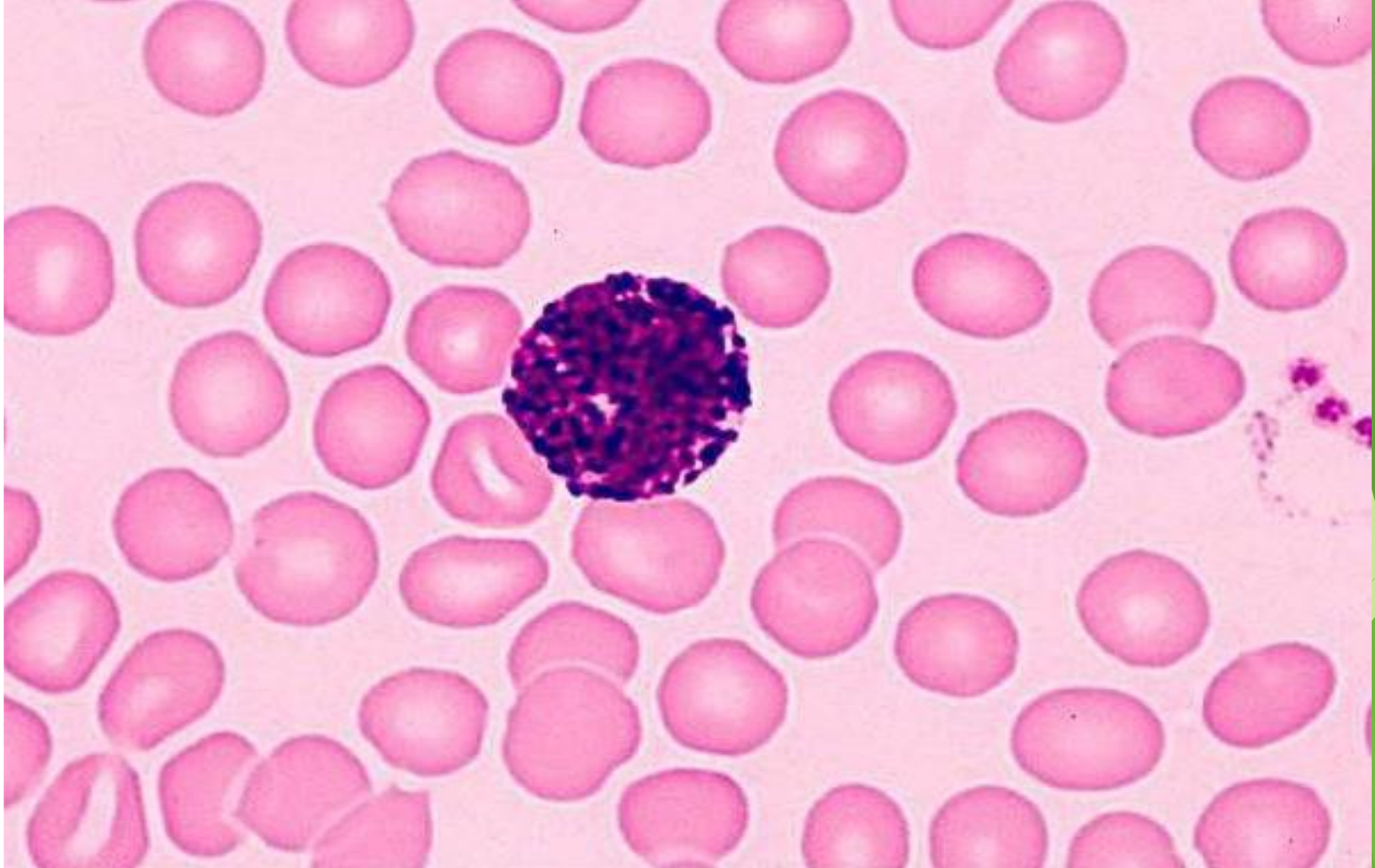




# EM of Eosinophils

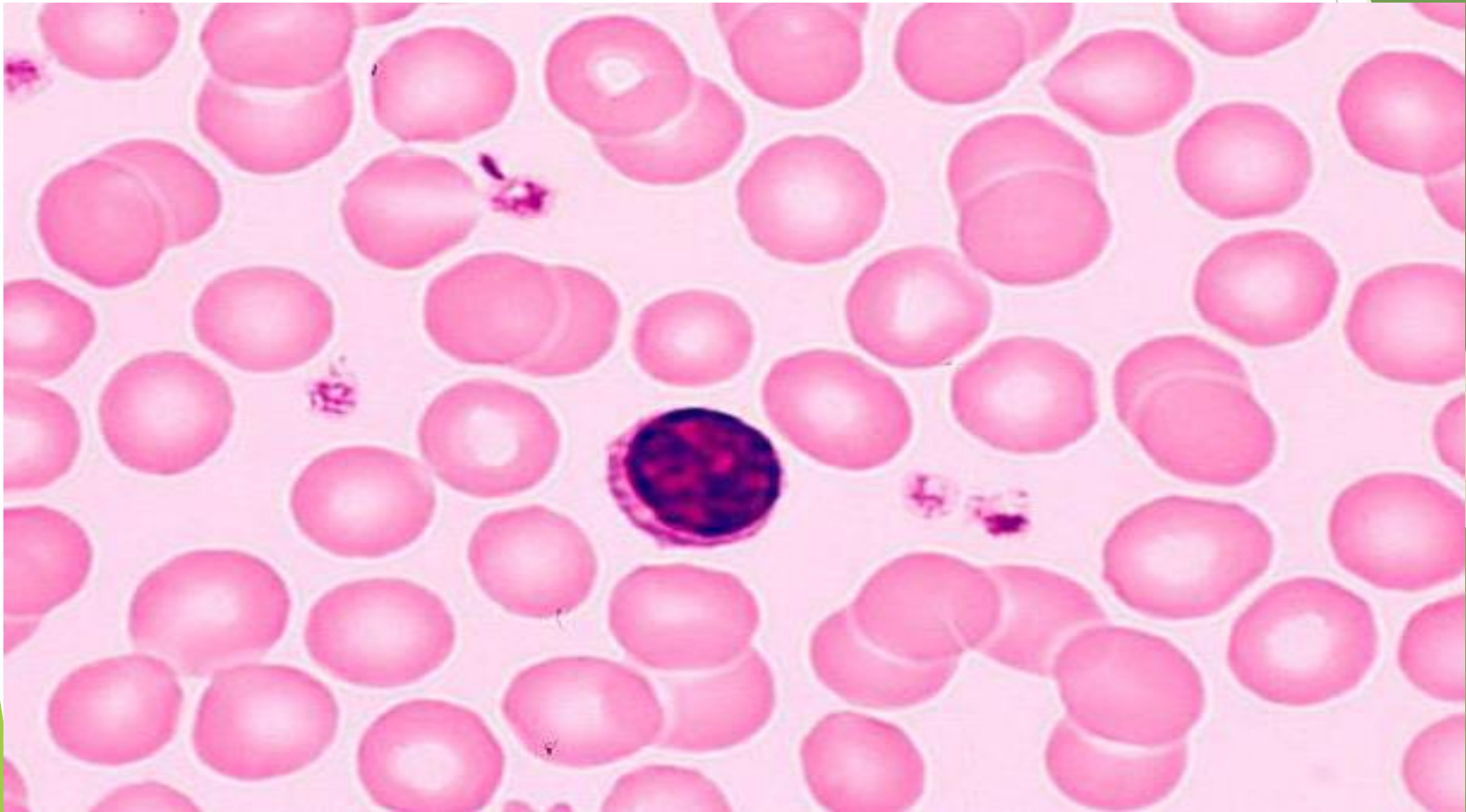


3- **Basophils** with U or S shaped nucleus and basophilic granules.



# Agranulocytes

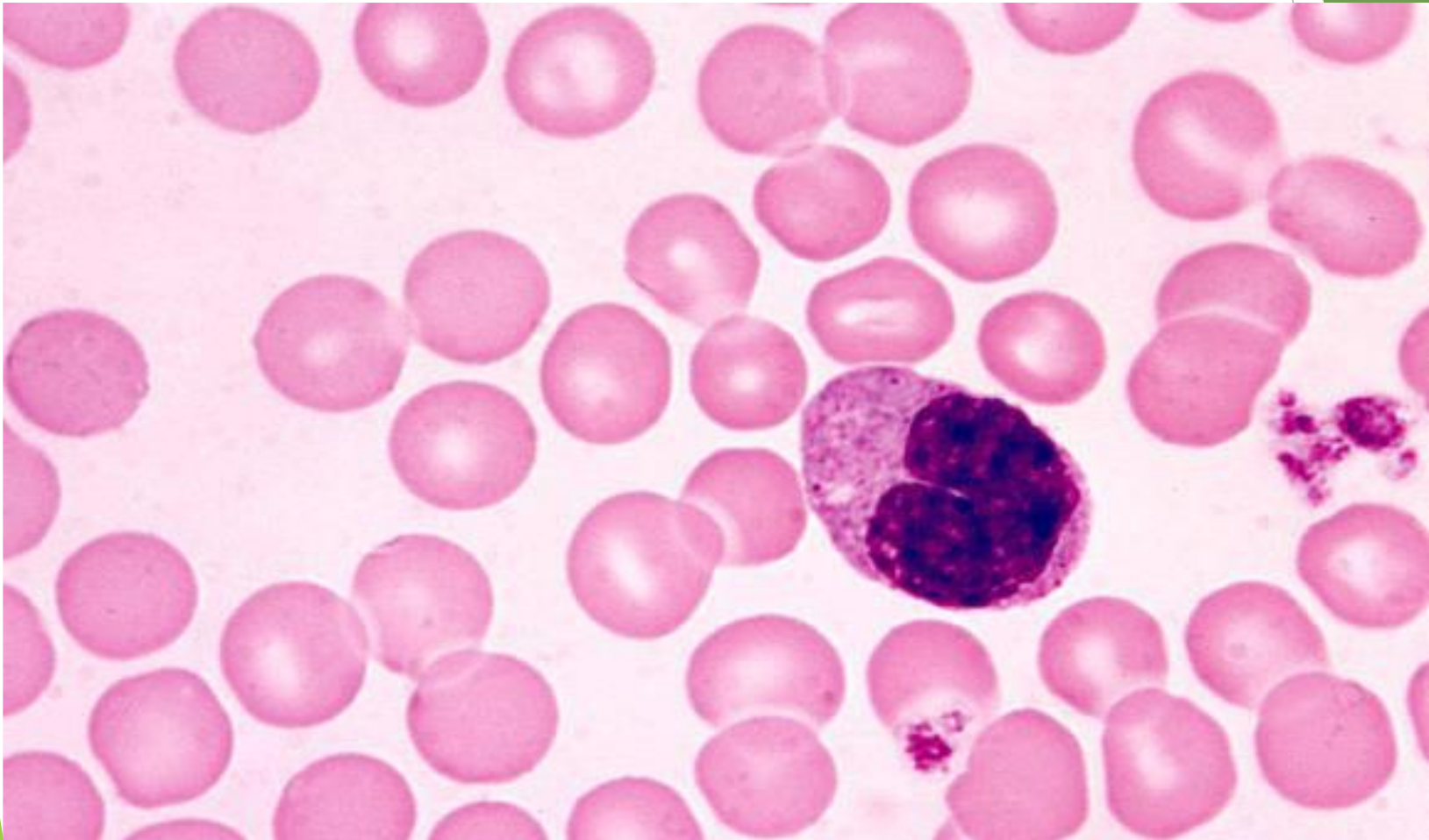
1- **Lymphocytes:** with large nucleus and basophilic thin rim of cytoplasm.





# Agranulocytes

2- **Monocytes:** with kidney-shaped eccentric nucleus and pale basophilic cytoplasm.



**GOOD LUCK**

**&**

**THANK YOU**