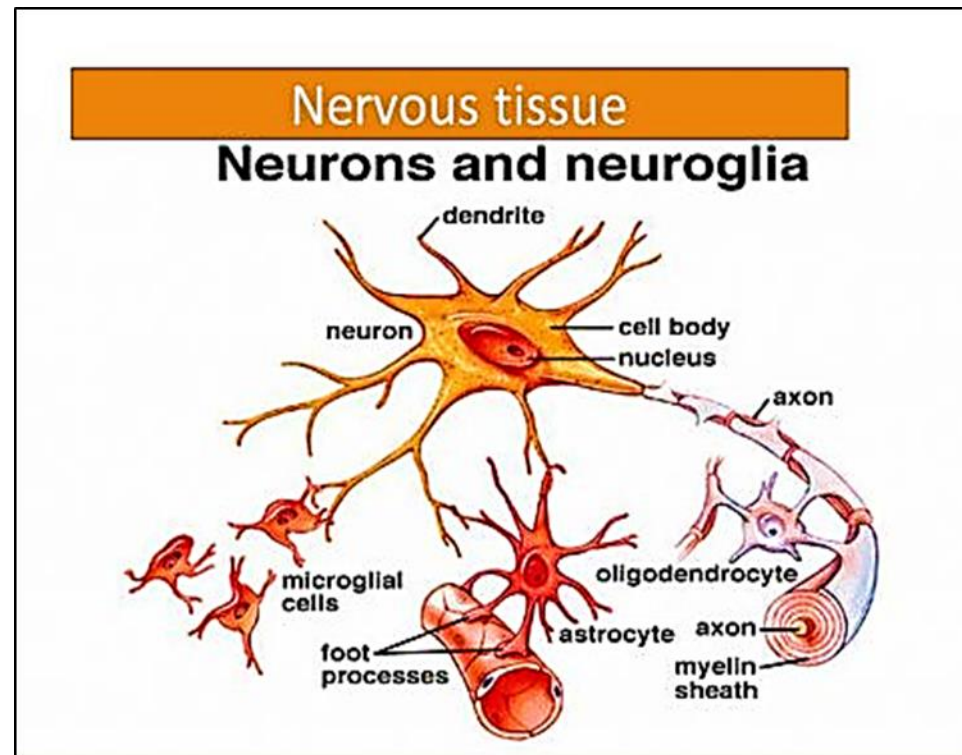


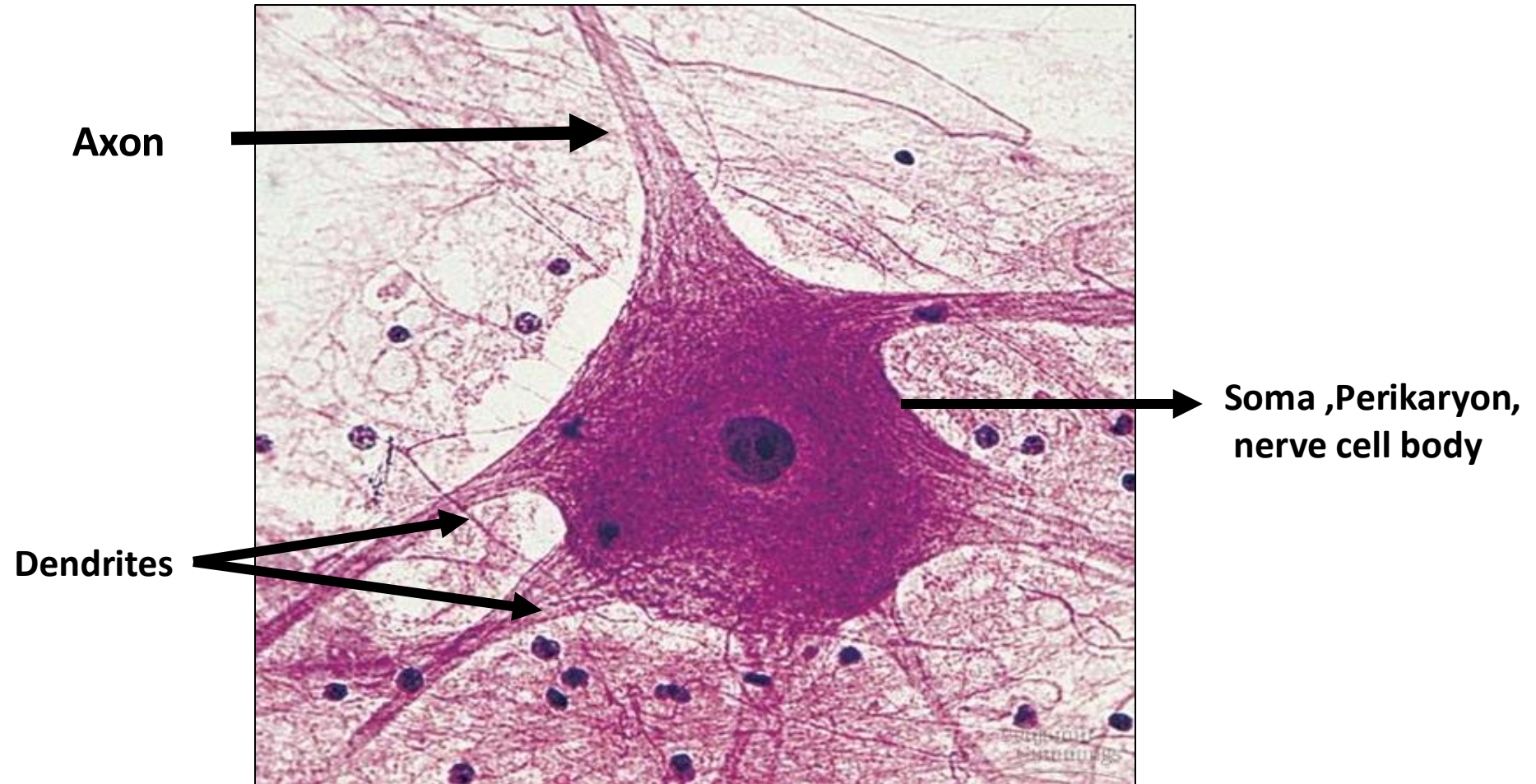
# Nervous Tissue

## Practical Lab 1<sup>st</sup> Year

### 2024- 2025

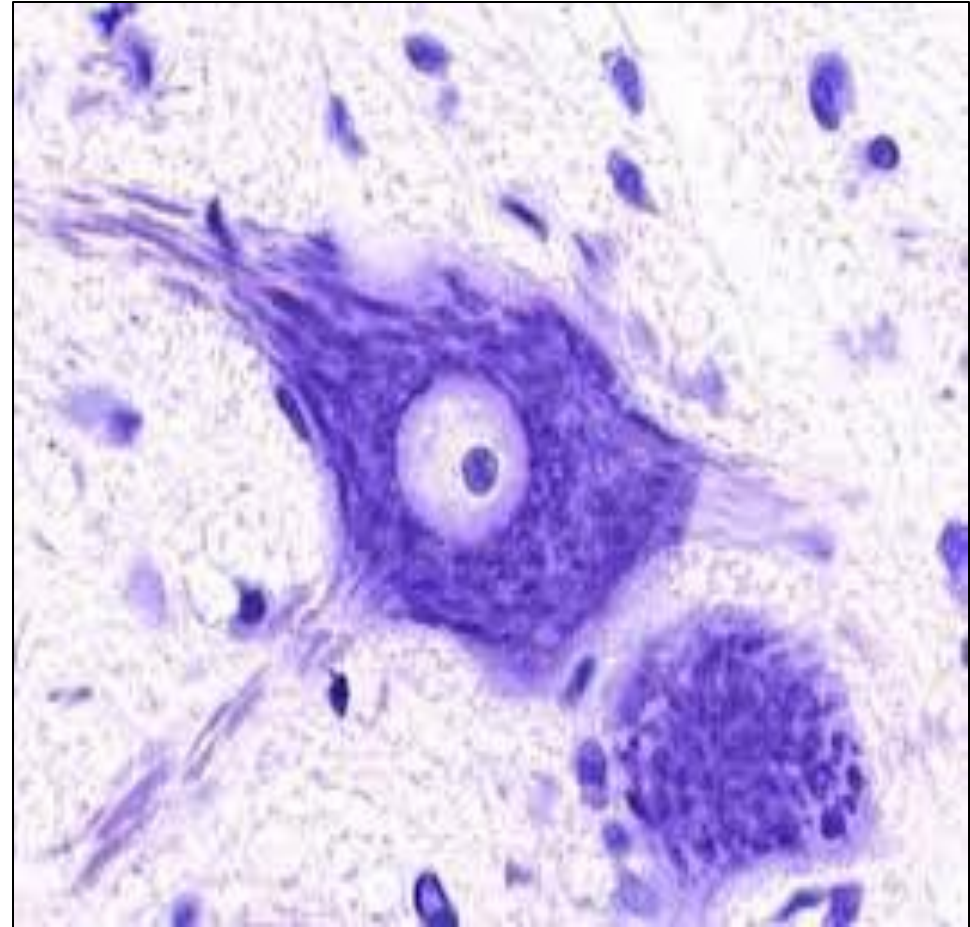
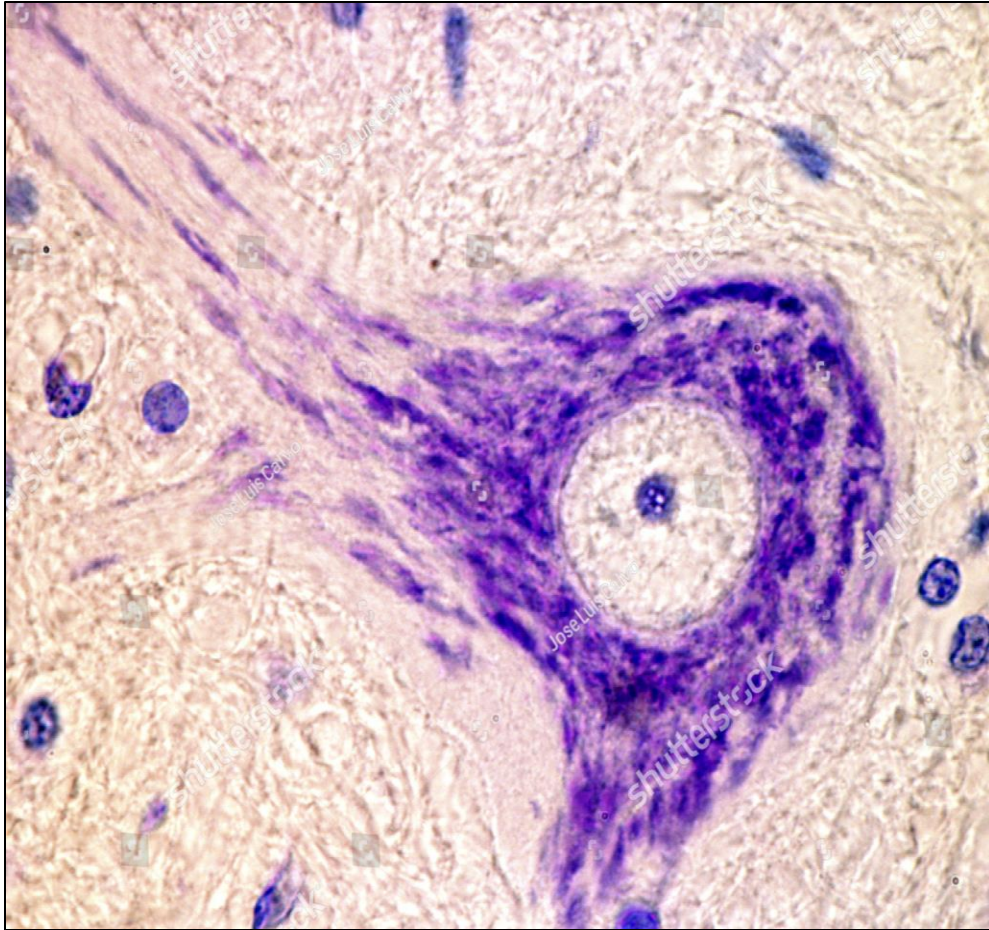


## Parts of the neuron



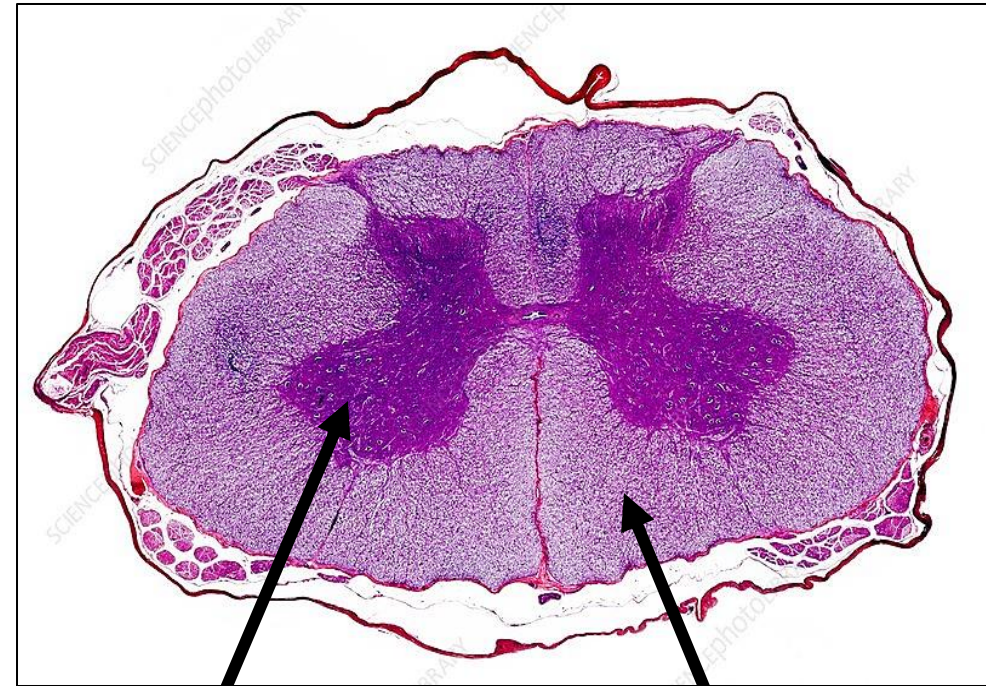


## Nissl's bodies ( granules) stained with Cresyl violet





## Cross section in the spinal cord

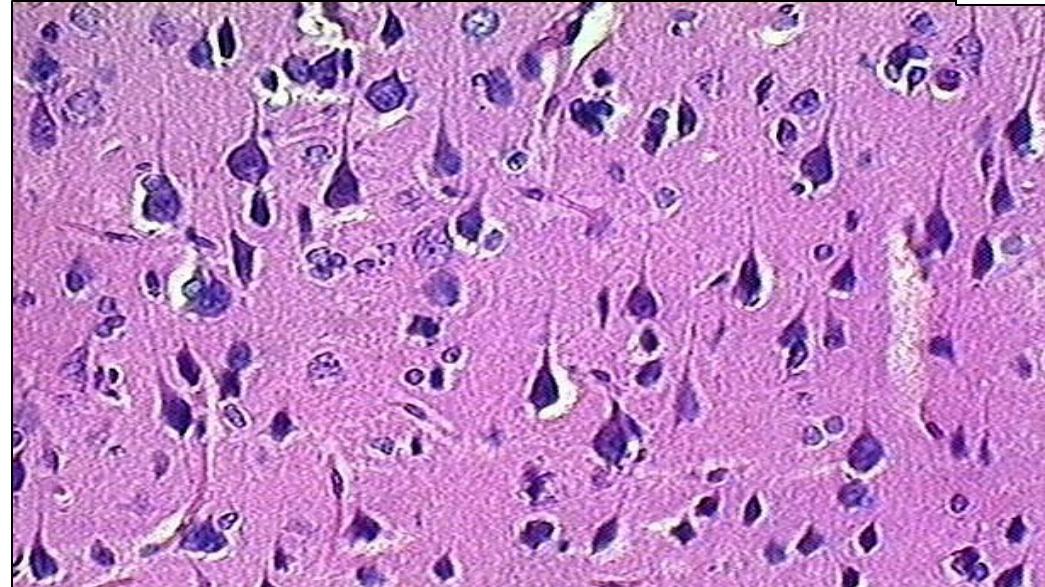
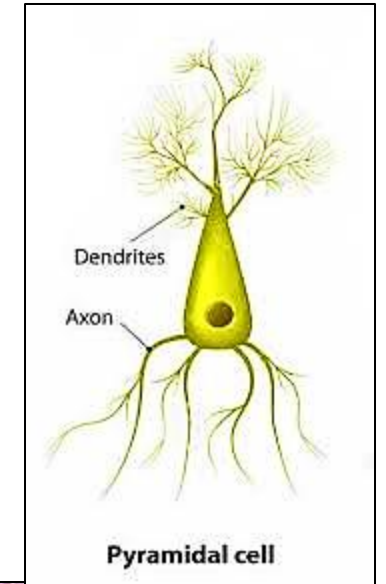
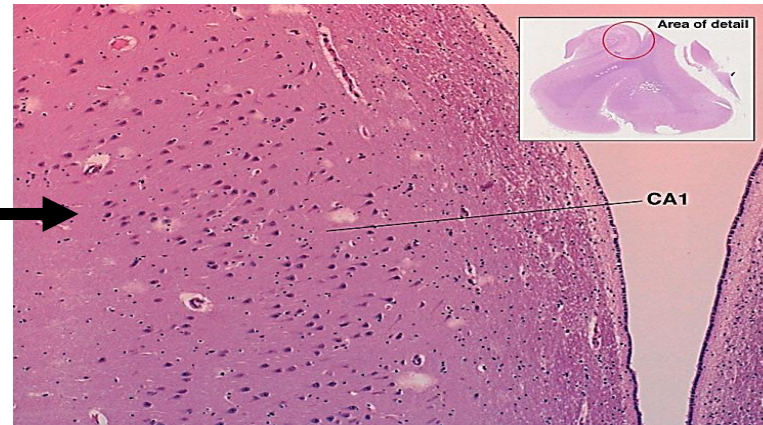


Grey matter

White matter



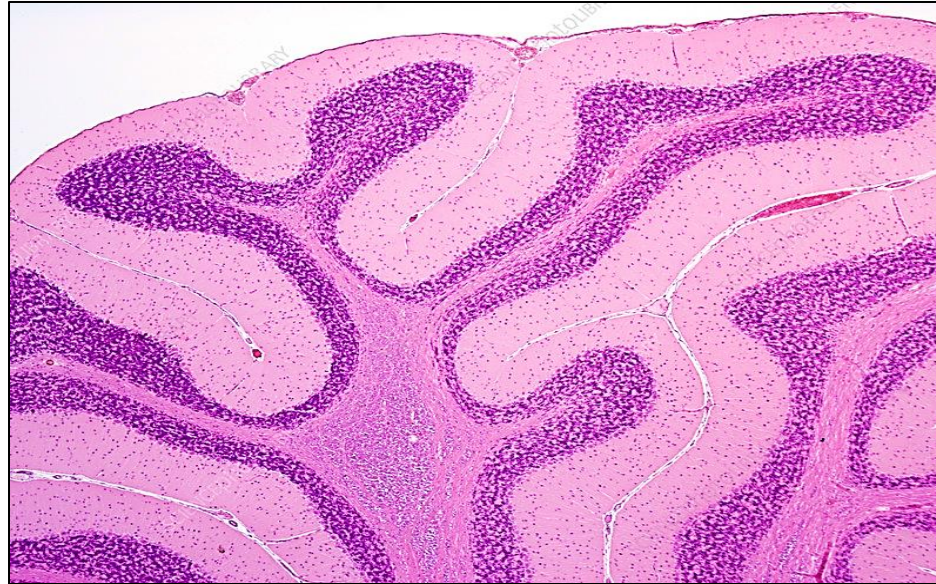
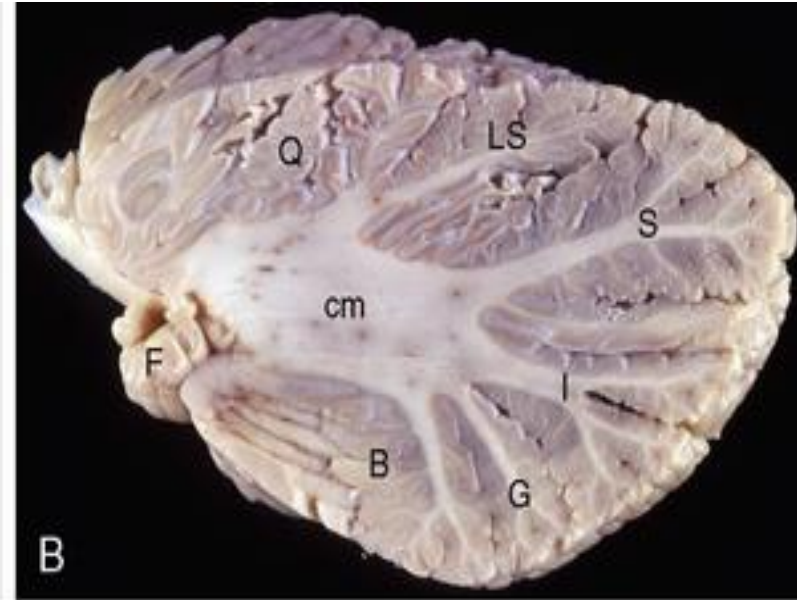
# Cross section in the cerebrum



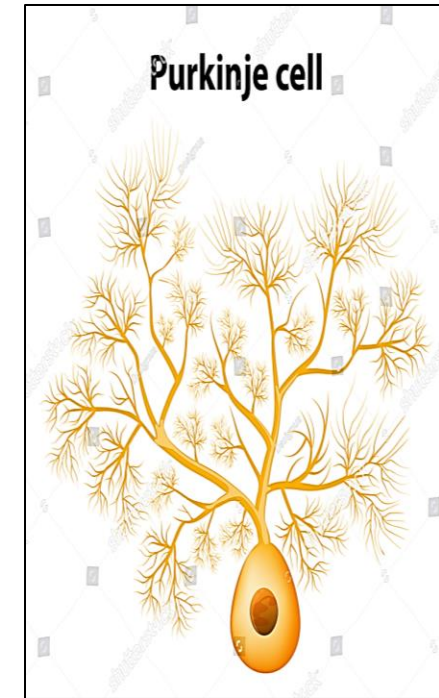
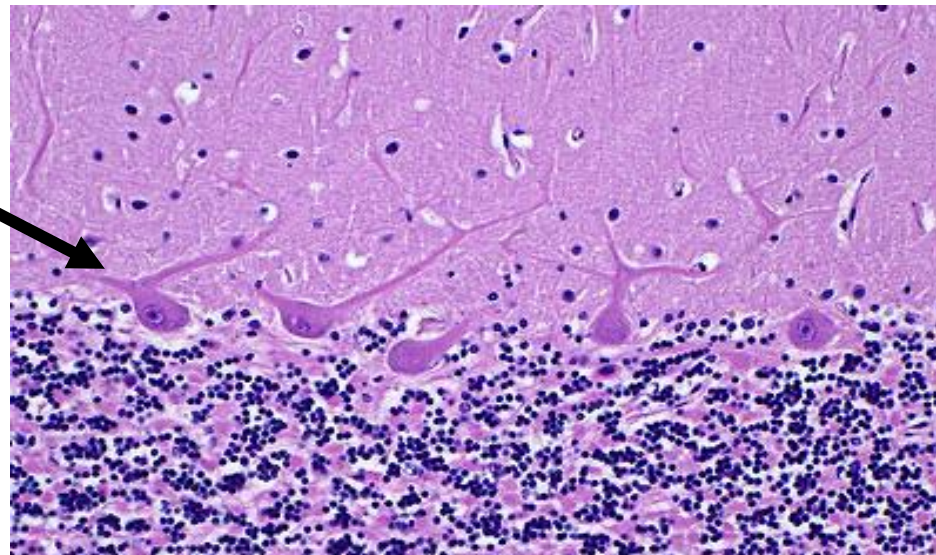
Pyramidal neuron of cerebrum



# Cross section in the cerebellum

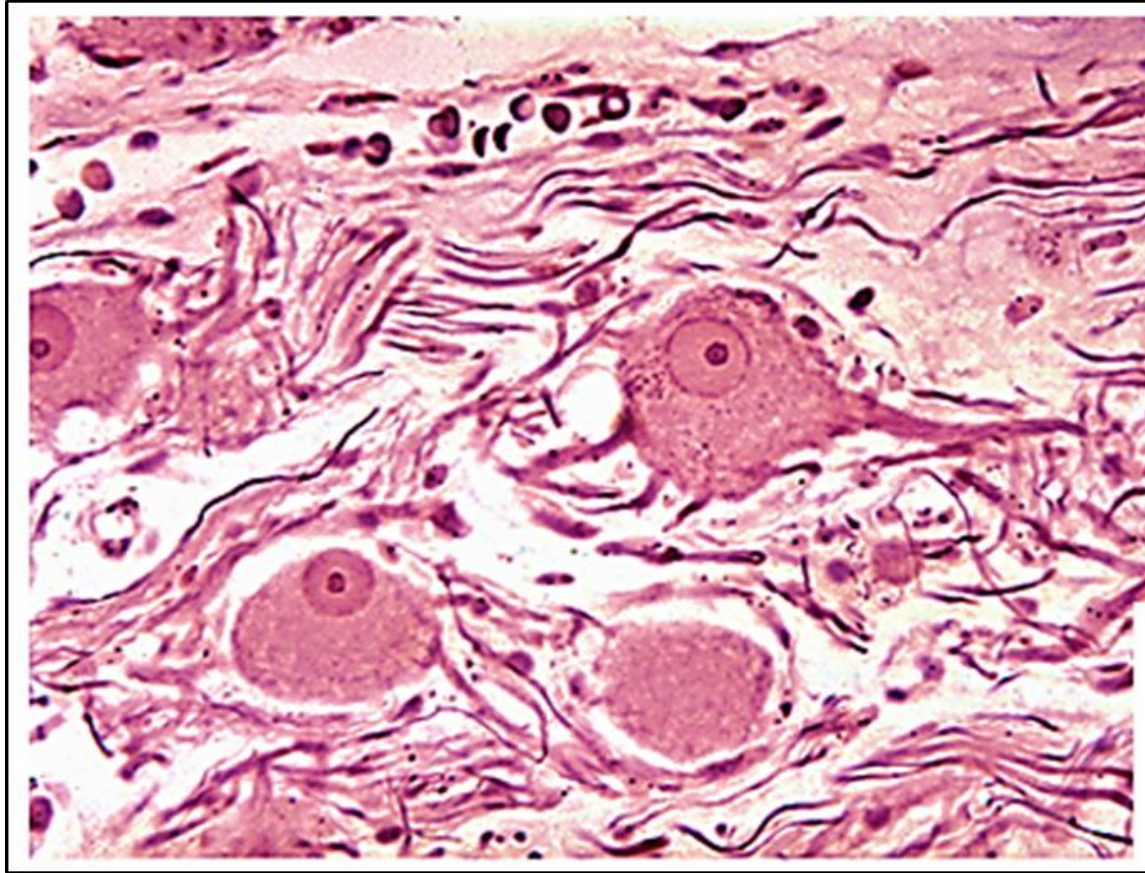


Purkinje neuron



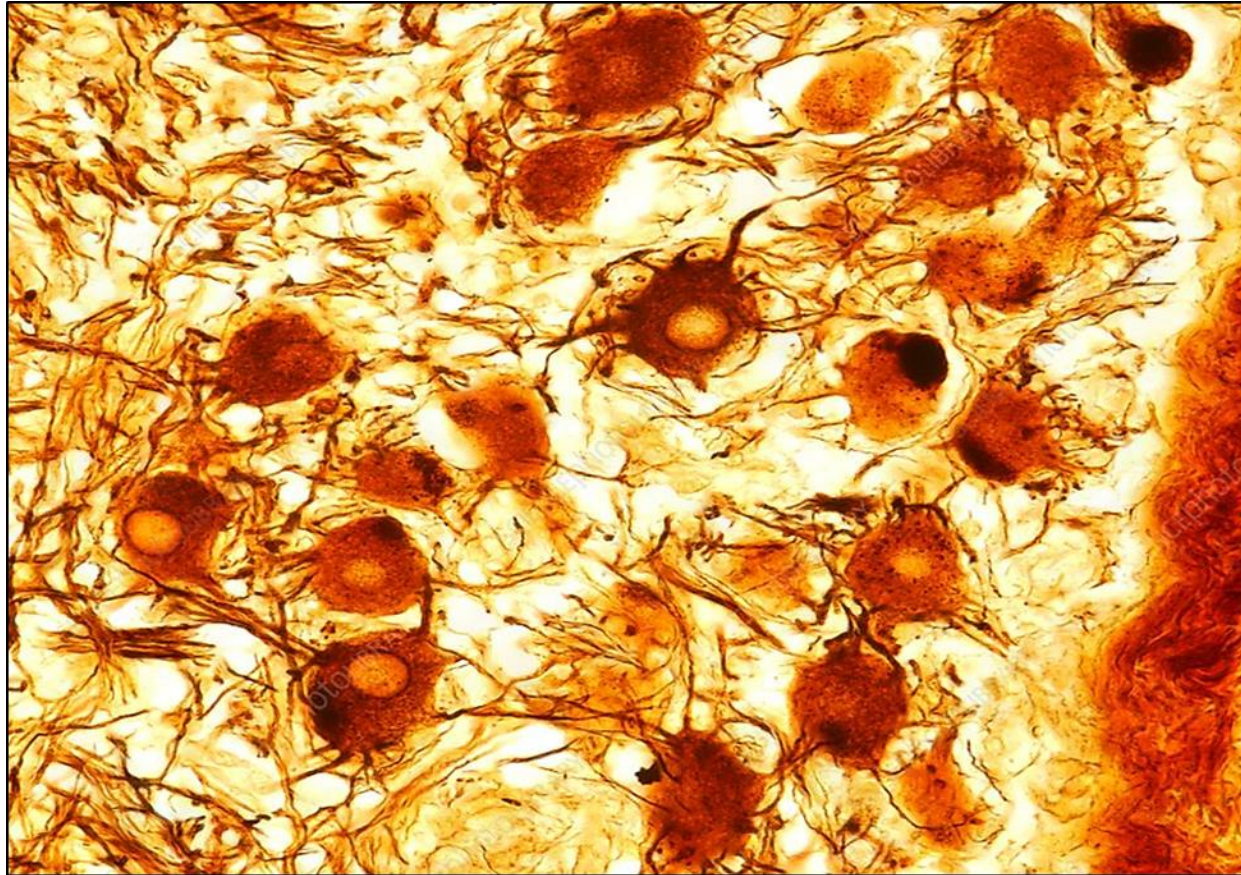


## Sympathetic ganglion (H&E)



- 1- nerve cells are multipolar and scattered
- 2- nuclei are eccentric
- 3- few satellite cells

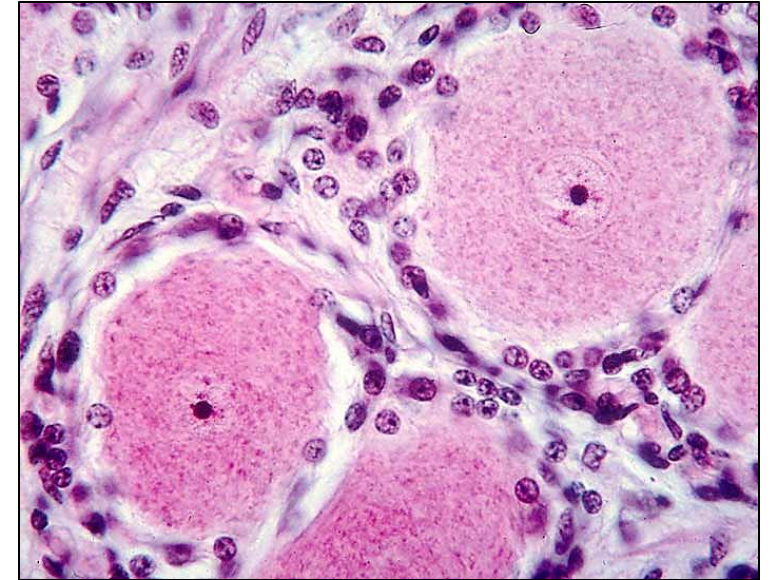
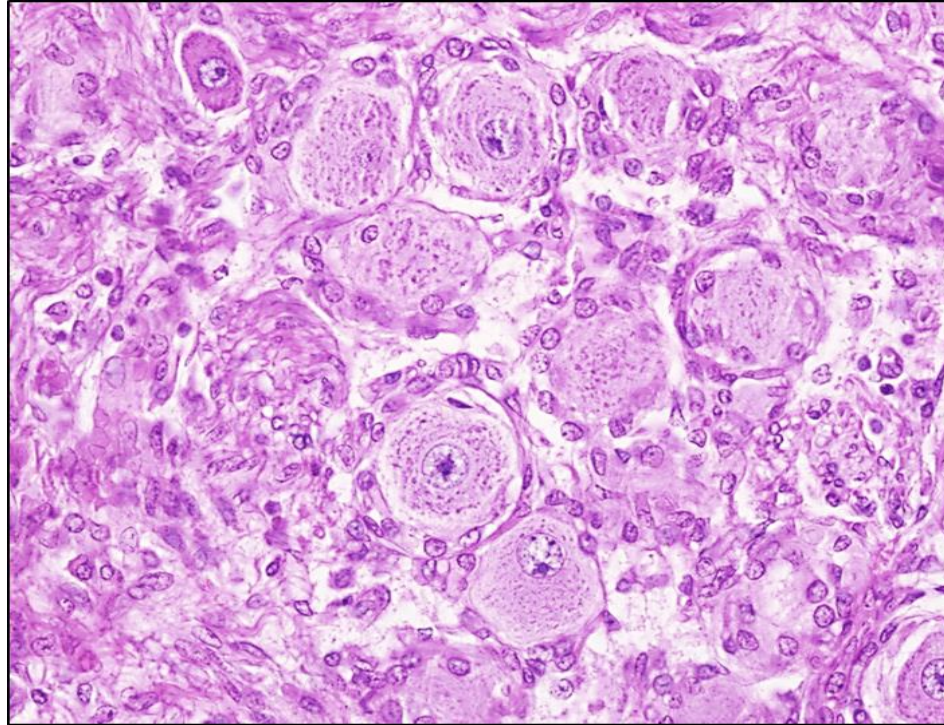
## Sympathetic ganglion (sliver)



- 1- nerve cells are multipolar and uneven**
- 2- nerve cells are scattered**



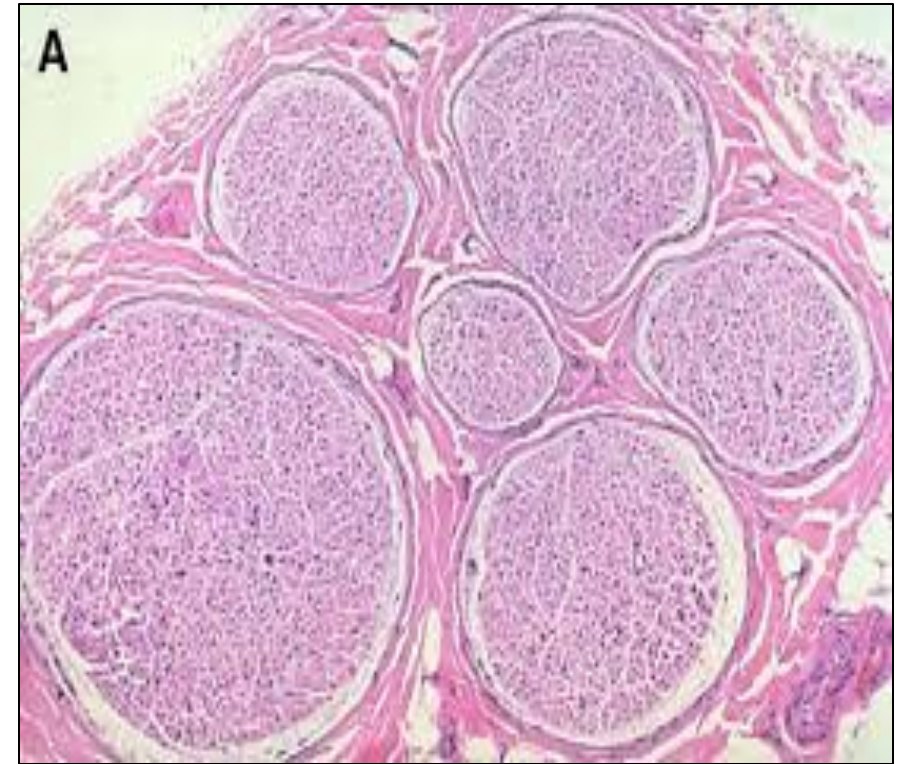
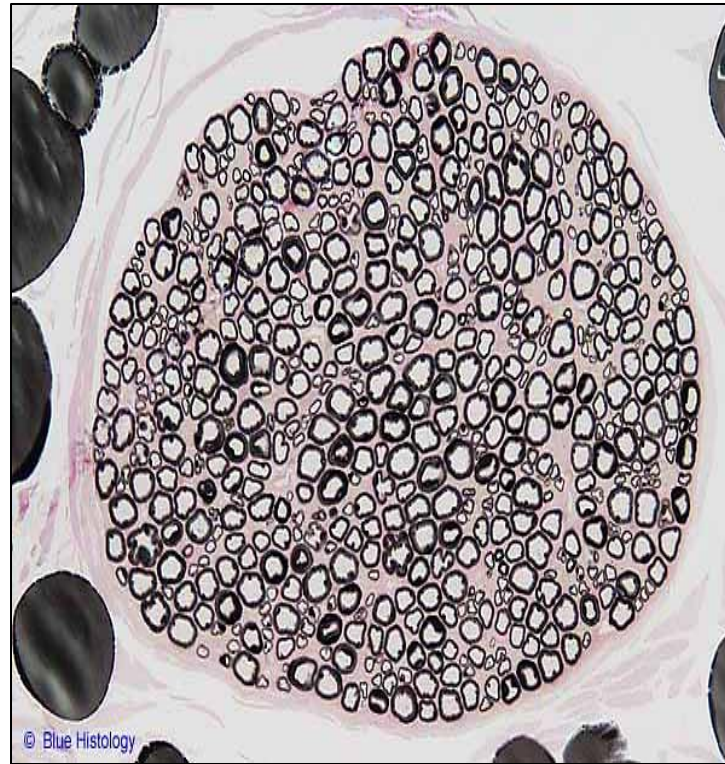
## The spinal ganglion (H&E)



- 1- nerve cells are rounded ( unipolar) & present in rows
- 2- nuclei central
- 3- Myelinated nerve fibers
- 4- Satellite cells surround each nerve cell body



## Nerve trunk stained with osmic acid & H&E





## The spinal ganglion (sliver)



- 1- nerve cells are rounded ( unipolar) & present in rows
- 2-Myelinated nerve fibers