

Clavicle



Muscles Origins:

- ① Deltoid M.
- ② SCM
- ③ pectoralis major
- ④ Sternohyoid M.

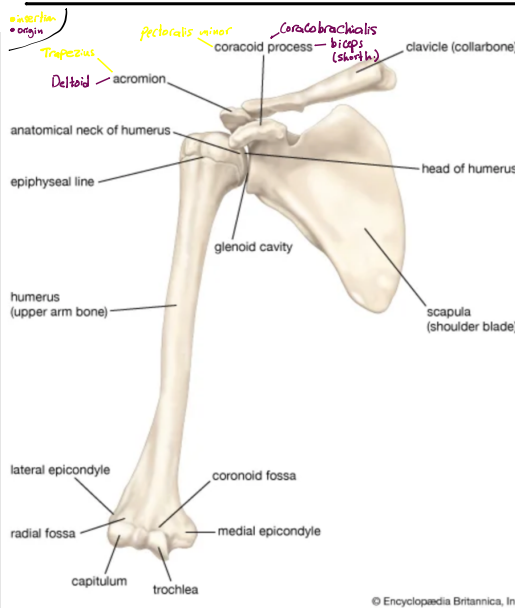
Muscles insertions:

- ① Trapezius M.
- ② subclavius M.

Ligaments attachments:

- ① Coracoclavicular lig.
- ② Costoclavicular lig.
- ③ Sternoclavicular lig.

Trapezoid
conoid



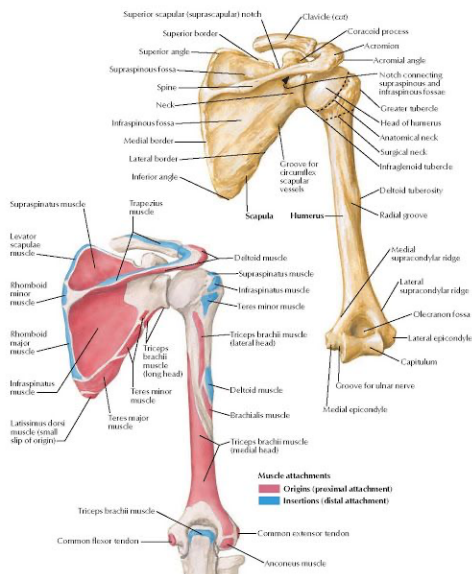
- ## Scapula:
- ① Supscapularis M.
 - ② Triceps (long h.)
 - ③ biceps (long h.)
 - ④ Omohyoid M.
 - ⑤ serratus ant.

Humerus:

- ① Brachialis M.
- ② Brachioradialis
- ③ Extensor carpi radialis longus
- ④ pronator teres M.
- ⑤ common flexor tendon
- ⑥ common extensor tendon

- ① Supraspinatus
- ② supscapularis
- ③ pectoralis major
- ④ latissimus dorsi
- ⑤ Teres major
- ⑥ Deltoid
- ⑦ coracobrachialis M.

Posterior view



- ## Scapula:
- ① Supraspinatus
 - ② infraspinatus
 - ③ Triceps (long h.)
 - ④ Teres minor M.
 - ⑤ Teres major M.

- ① levator Scapulae
- ② Rhomboid minor
- ③ Rhomboid major

Spine - Deltoid
Trapezius

- ## Humerus:
- ① Triceps (lateral h.)
 - ② brachialis
 - ③ Triceps (medial h.)
 - ④ anconeus M.

- ① Supraspinatus M.
- ② infraspinatus M.
- ③ Teres minor
- ④ Deltoid

* Deltoid M. → origin: lateral part of clavicle + spin & acromion process of scapula
→ insertion: deltoid tuberosity of humerus
→ N. supply: axillary N.

* SCM → origin: manubrium of sternum & clavicle
→ insertion: mastoid process of temporal bone
→ N. supply: CN XI & C2 & C3

* pectoralis major → origin: clavicle + sternocostal
→ insertion: lateral lip of intertubercular sulcus of humerus
→ N. supply: clavicular l. → lateral pectoral N.
sternocostal l. → medial " "

* pectoralis minor → origin: 3rd - 5th ribs
→ insertion: coracoid process of scapula
→ N. supply: medial pectoral N.

* Trapezius → origin: skull, nuchal lig., spinous process of C7 - T12
→ insertion: clavicle, acromion & scapular spine
→ N. supply: sensory → ventral rami of C3 & C4
motor → CN XI

* Subscapularis → origin: subscapular fossa
→ insertion: lesser tubercle of humerus
→ N. supply: upper & lower subscapular N. (from brachial plexus)

* Supraspinatus → origin: supraspinous fossa of scapula
→ insertion: greater tubercle of humerus
→ N. supply: suprascapular N.

* infraspinatus → origin: infraspinous fossa of scapula
→ insertion: middle facet of glenoid tubercle
→ N. supply: suprascapular N.

* latissimus dorsi → origin: spinous process of thoracic T7 - T12, thoracolumbar fascia, iliac crest, inferior 3 ribs & inferior angle of scapula
→ insertion: floor of intertubercular groove of humerus
→ N. supply: thoracodorsal N. (post. cord of brachial plexus C6 - C8)

* Teres major → origin: dorsal surface of inferior angle & lower part of lateral border of scapula
→ insertion: medial lip of intertubercular sulcus of humerus
→ N. supply: lower subscapular N.

* **Teres minor** → origin: posterior surface of scapula
 → insertion: greater tubercle of humerus
 → N. supply: axillary N.

* **Serratus Ant.** → origin: Superolateral surfaces of 1st - 8th ribs
 → insertion: along superior angle, medial border & inferior angle of scapula
 → N. supply: long thoracic N. → *damaged* → *winged scapula*

* **Coracobrachialis** → origin: coracoid process of scapula
 → insertion: middle of medial aspect of body of humerus
 → N. supply: musculocutaneous N.

* **Levator scapulae** → origin: transverse processes of C1-C4
 → insertion: medial border of scapula
 → N. supply: C3-C4 & suprascapular N.

* **Rhomboid major** → origin: spinous processes of T2-T5
 → insertion: medial border scapula
 → N. supply: dorsal scapular N.

* **Rhomboid minor** → origin: ligamentum nuchae & C7 & T1
 → insertion: scapular medial border
 → N. supply: dorsal scapular N.

* **Triceps** → origin: long h. → infraglenoid tubercle of scapula lateral h. → humerus (superior to radial groove) medial h. → humerus (inferior to radial groove)
 → insertion: into one tendon onto olecranon of the ulna
 → N. supply: radial N.

* **Biceps** → origin: long h. → supraglenoid tubercle of scapula short h. → coracoid process of scapula
 → insertion: both into radial tuberosity & fascia of forearm via bicipital aponeurosis
 → N. supply: sensory & motor by musculocutaneous N. (C5, C6, lateral cord of brachial plexus)

* **brachialis** → origin: distal ant. humerus
 → insertion: ulnar tuberosity
 → N. supply: dual ← *medially by musculocutaneous N.* *laterally by radial N.*

* **brachioradialis** → origin: lateral supracondylar ridge of humerus
 → insertion: radius (base of its styloid process)
 → N. supply: radial N.

* **extensor Carpi radialis longus** → origin: proximal lateral epicondyle & lateral supracondylar ridge of humerus
→ insertion: dorsal surface of 2nd metacarpal ass. with index finger
→ N. supply: radial N.

* **pronator teres** → origin: Two → medial humeral supracondylar ridge & ulnar tuberosity
→ insertion: near middle of radius
→ N. supply: median N.

* **Anconeus** → origin: dorsal side of lateral epicondyle of humerus
→ insertion: olecranon of ulna
→ N. supply: motor branch of radial N. (C6-C8)

* **supinator M.** → origin: lateral epicondyle of humerus & posterior surface of ulna
→ insertion: posterior surface of radius
→ N. supply: branch of radial N.

* **pronator quadratus** → origin: oblique ridge on anterior surface of distal 1/4 of ulna
→ insertion: lateral border & anterior surface of distal 1/4 of radius
→ N. supply: anterior interosseous N. of forearm

* **extensor Carpi radialis brevis** → origin: fascia of extensor digitorum communis (Common extensor tendon)
→ insertion: 3rd metacarpal base
→ N. supply: radial N.

* **extensor Carpi Ulnaris** → origin: lateral epicondyle of humerus
→ insertion: base of 5th metacarpal
→ N. supply: posterior interosseous N., branch of deep division of radial N.

* **extensor digitorum** → origin: lateral epicondyle of humerus
→ insertion: tendon divides into 4 in distal forearm & inserts into extensor hood of each digit
→ N. supply: posterior interosseous N.

* **extensor digiti minimi** → origin: lateral epicondyle of humerus
→ insertion: extensor hood of little finger
→ N. supply: posterior interosseous N.

* **extensor indicis** → origin: distal 1/3 of dorsal part of the body of ulna & from interosseous mem.
→ insertion: extensor expansion of 2nd digit
→ N. supply: posterior interosseous N., branch of radial N.

* abductor pollicis longus
→ origin: posterior sides of radius, Ulna & interosseous mem.
→ insertion: base of 1st metacarpal
→ N. supply: posterior interosseous N.

* extensor pollicis brevis
→ origin: posterior surface of distal 1/3 of radius & interosseous mem. (inferior to origin of extensor pollicis longus)
→ insertion: base of distal phalanx of thumb
→ N. supply: posterior interosseous N.

* extensor pollicis longus
→ origin: posterior surface of Ulna & interosseous mem.
→ insertion: base of distal phalanx of thumb
→ N. supply: posterior interosseous N.

* flexor carpi radialis M.
→ origin: medial epicondyle of humerus as a part of common flexor tendon
→ insertion: anterior aspect of base of 2nd metacarpal (and has small slips to both the third metacarpal and trapezium tuberosity)
→ N. supply: median N.

* palmaris longus
→ origin: medial epicondyle of humerus as a part of common flexor tendon
→ insertion: at flexor retinaculum
→ N. supply: median N.

* flexor carpi ulnaris
→ origin: medial epicondyle of humerus as a part of common flexor tendon & olecranon of Ulna
→ insertion: pisiform, hook of hamate & base of 5th metacarpal
→ N. supply: Ulnar N.

* flexor digitorum superficialis
→ origin: Two → ① humero-ulnar from common origin of wrist flexors / ② radial from anterior oblique line of shaft of radius (medial epicondyle of the humerus and the medial border of the coronoid process of the ulna)
→ insertion: middle phalangeal bases of 2nd-5th
→ N. supply: median N., occasionally (AIN)

* flexor digitorum profundus
→ origin: proximal part of Ulna
→ insertion: distal phalanges of 2nd-5th digits
→ N. supply: dual → medial part (insert to 4th & 5th digits) ⇒ Ulnar N.
→ lateral part (insert to 2nd & 3rd digits) ⇒ median N. via ant. interosseous branch

* flexor pollicis longus M.
→ origin: anterior surface of radius & surrounding interosseous mem.
→ insertion: base of distal phalanx of the thumb
→ N. supply: AIN; branch of median N.

Thank you ▼ 🙌