

Athar

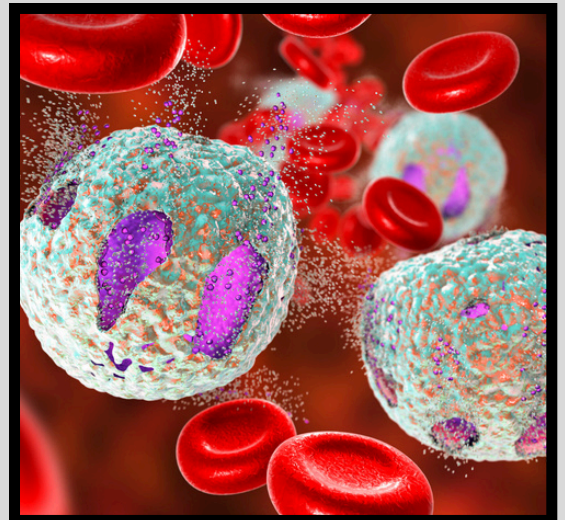
Pathology Final

Done By:

Rahaf mohammed
hadeel albtoush

Designed By :

Raneem Dmour



1. What disease causes xanthoma ?

- a) Diabetes
- b) SLE
- c) Lipidemia
- d) Hyper lipidemia

Answer: d

2. All are true except?

- a) Initiation is not sufficient for tumor formation
- b) Promotion is not sufficient to cause tumor
- c) Initiation results from exposure to mutagenic

Answer: C

3. One of the following is epithelial tumor?

- a) Fibroma
- b) Stoma
- c) Adenoma
- d) Hemelangiom

Answer: C

4. the much apoptosis?

Alzheimers disease

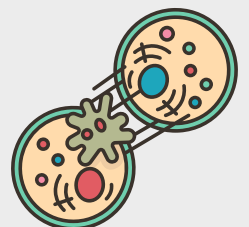
5. What has a myxoid stroma is ?

squamous cell carcinoma

6. All of the following are malignant except?

- a. Adenocarcinoma
- b. Adenoma

Answer: B



7. All of the following are true about the causes of generalized edema except:

- a) hyped blood pressure
- b) nephrotic syndrome
- c) congestive heart failure

Answer: A

8. Which of the following is not adaptation?

Fatty change

9. All these type of cancer in children except?

- a. Lukemia
- b. Retinoblastoma
- c. Squamous cell carcinoma
- d. Wilms tumor (nephroblastoma)

Answer: C

10. Which one of these related to the mammary cancer?

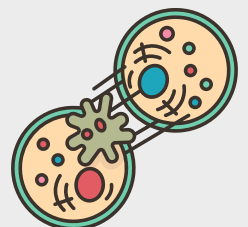
- a. HCG
- b. GI-MA
- c. Glycoprotein CA125
- d. Glycoprotein CA15-3

Answer: d

11. All are originated from more than one neoplastic cell and one germ layer except :

- a. Wilms tumor
- b. Pleomorphic adenoma
- c. Mature teratoma

Answer: b



12. The higher organ sensitive of hypoxia

- A .brain
- B .myocardial

Answer: A

13. Which cyclin ... S Phase and promote DNA replication?

- a. C E (cdk2)
- b. C A (cdk4)
- c. C A (cdk2)
- d. C B (cdk2)
- e. C D (cdk2)

Answer: A

