

أرشيف أسئلة – دفعة وريد

microbiology – final exam

Done by :



1) Correct statement about fungi ?

- A. Their cell membrane consist of Ergosterol. XXX
- B. Some fungi are dimorphic , in enviroment are yeast and in human are mold

2) Abuse of antibiotics ?

- A. Dead
- B. hypersensetivity rxn
- C. impaired liver
- D. impaired kidney
- E. all of above XXX

3)About sputum test, the incorrect one ?

- A. Add on a sputum sample equal volume of HCL to dissolve the mucus XXX
- B. Add on a sputum sample equal volume of NaOH to dissolve the mucus
- C. Centrifuge at 200xg for 5 minutes

4) Incorrect

inactivated vaccines - IgA mucosal immunity present

5) A parasite that is capable of living both freely and as parasite :

- A. Obligatory parasite
- B. Ectoparasite
- C. Facultitive parasite xxx
- D. Opportunistic parasite
- E. Coprozic parasite

6)Preservation of stool specimens, incorrect one ?

- preservative used 1% formalin.

7) The host which harbours the parasite which is not normally found :

- A. R.H
- B. D.H
- C. Accidental host XXX
- D. I.H

8)The Baltimore classification of viruses based on:

Mechanism of mRNA production

9)The relationship between entamoeba coli and human is :

- A. Commensalism XXX
- B. mutuliam
- C. Symbiosis
- D. Parasitism

10) What family is rubella virus?!

Togaviridae

11) About Entamoeba histolytica, the true one :

- a. Trophozoite has 4 nuclei
- b. R.H is cow
- c. Cyst has 1 nuclei
- d. Diagnosis stage are cyst and trophozoites XXX

12) Causes cervical cancer :

Papillomavirus type 16 & 18

13) Trophozoite Entamoeba histolytica, the incorrect one :

- a. Has clear ectoplasm
- b. Has granulae endoplasm
- c. May contain RBCs
- d. Ingested trophozoite can cause infection XXX

14) correct about viruses

DNA or RNA

15) Drug suitable for treatment amobic dysentery

- a. Amoxicillin
- b. Ceftriaxone
- c. Metronidazol xxx

16) all of these Hermaphrodites termatodes except :

schistosoma spp

17) suitable site that can ulcer happen, by E.histolytica ?

- a. Stomach
- b. Left kidney
- c. Doudenum
- d. Right liver lobe XXX

18) one of these termatodes intestinal fluke:

faxciolopsis buski

19) Entamoeba coli, the true one :

- a. Are Gram +ve
- b. Are Gram -ve
- c. Nonpathogenic XXX

20) Penicillin – cell wall

21) Negri body : Found in cytoplasm of neuron

22) Viropexis - penetration

23) Liver masses from sheep :

Echinococcus granulosus



24)Wrong statment :

staining takes 1 min

The most critical step is crystal violet XXX

Air dry is the first step

25) Ritonavir .. HIV protease inhibitor

26)incorrect regarding nematodes:

1)tissue nematodes – oviparous XXX

2) loa loa - eye worm

27)in any stage the bacterial growth rate is greatest

lag phase

log phase xxx

stationary phase

28)Correct:

Soap and water better than alcohol rub

29)arrangement of curved bacteria :

streptococci

tetrad

diplococcus

vibrio xxx

30)One is correct :

Eating food in laboratory is not permitted

31)Trasmitted by blood except :

HIV-1

HIV-2

Hepatitis B

Hepatitis C

H1N1 influenza XXX

32)HIV has the capability of infecting dogs :

Phenotypic mixing

33) penicillin is discovered by :

fleming XXX

lister

koch

pasteur

**34) Approx cell density in 0.5 McFarland standard
(1*v10*8 CFU/ml)**

1.5

35) Sneezing could cause all of the following except :

Whooping cough
Diphtheria
Influenza
TB
Hepatitis B XXX

36) incorrect About mycobacterium:

Strict aerobes
Grows slowly
Mycolic acids
Gram negative irregular bacilli xxx
Virulence factors prevent destruction by lysosomes or macrophage

37) HHV-8 inhibits p53 & Rb oncoprotein :

Latency associated nuclear antigen

38) Which one of the following is TRUE regarding temperate viruses? Temperate viruses:

- A. Undergo both productive and non-productive infections and only establish latent infections
- B. Lead to a productive infection called lytic infection
- C. Undergo both productive and non-productive infections and can establish both latent and lytic infections
- D. Enter the cells and persist indefinitely with no virus production, called non-productive responses
- E. Only establish latent infections

39) Produce anti oxidases to counter products of macrophage oxidative burst :

Leishmania

40) Resistant :

Cell membrane
Cytoplasm
Plasmid XXX

41) Progressive multifocal leukoencephalopathy is caused by?

JC virus

42) antibiotic given when your immunity can kill bacteria

chloramphenicol
tetracycline
Bactercin XXX
Trimethoprim
Clindamycin

43) 2 bacteria, GC content for the first one 70% .. the second one GC content 30% .. one of the following is the most accurate :

The 2 bacteria are not related

44) Wrong : Mucus plug egg - pin worm

45) Oncoproteins in kaposi sarcoma bind to p53 -LANA1

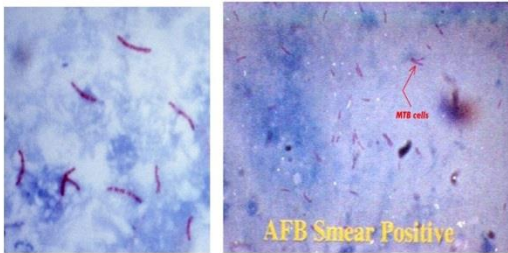
46) determines the host range & cell tropism - glycoprotein



- 47) **Positive result in complement fixation**-No lysis of RBC & settle into a pellet
 48) **Continuous cells layer** -Hela
 49) **Wrong:** Hcl with sputum to dissolve mucus
 50) **Fasciolopsis habitat** -small intestine
 51) **Miricardium** -Hatches from egg then swims to look for the snail as in intermediate host
 52) **Treatment of entamoeba histolytica** -metronidazole
 53) **Definitive host** -mature adult stage or sexual reproduction
 54) **Attachments** -pilli
 55) **Parasites** - Eukaryotic

56) **Counter stain :**

Methylene blue



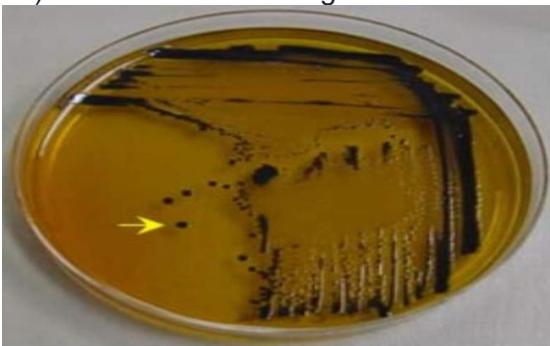
TB bacteria

57) **In Mac konkey agar :**

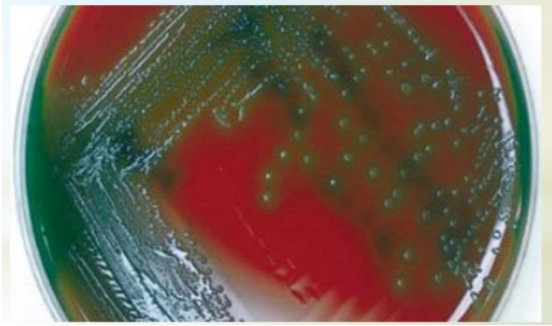
E.coli .. neutral red used



58) **Salmonella in SSA agar**



59) Alpha hemolysis converts hemoglobin to methoglobin



60) Schistosoma



61) Necator amricana



62) Strongliodes



63)One incorrect about E test:

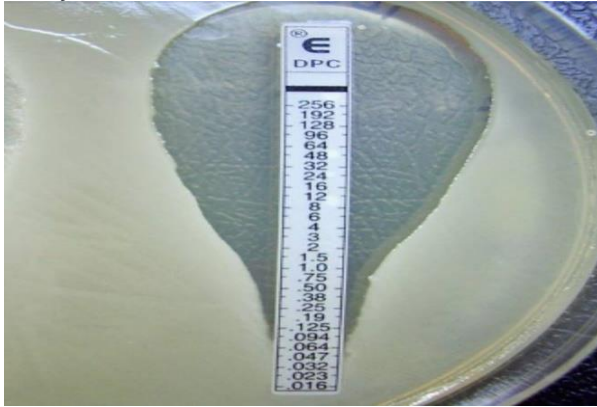
Plastic strip with predefined gradient of one AB

One strip per AB

Short shelf like

Storage at -10 C XXX

Easy to use



64)Gene cassettes – trypanosome