

# Immune Archive

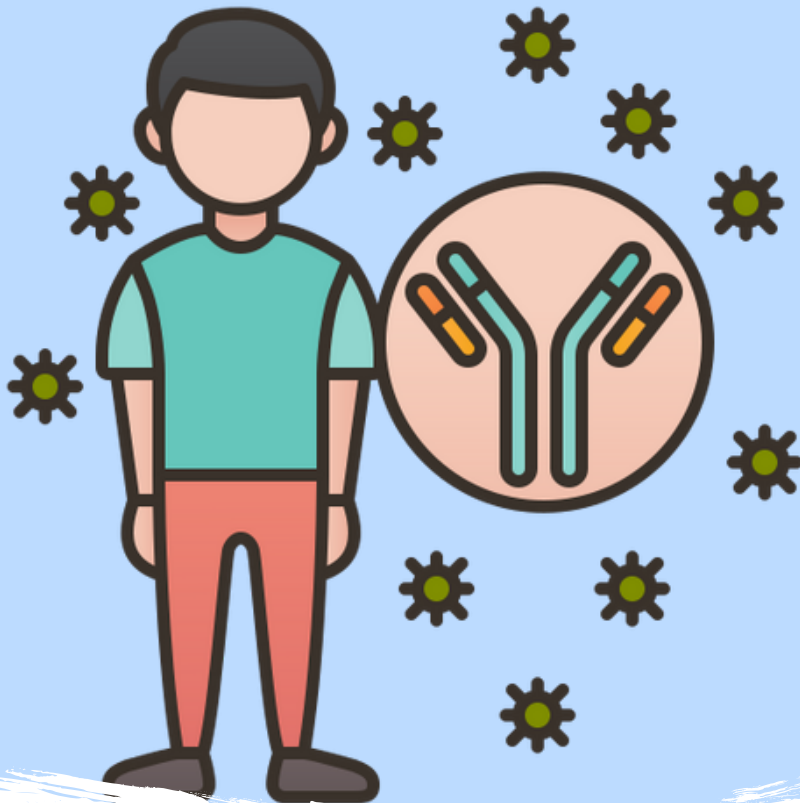
## زوح- Mid

*Done by:*

**Mais Basil**

*Corrected by:*

**Emran Younis**



1) EBV invade B cell by binding to :

- A. CR1
- B. CR2
- C. CD4
- D. MHC1



Answer: B

2) Ig that does not cross placenta:

- A. IgG1
- B. IgG2
- C. IgG3
- D. IgG4
- E. IgG5

Answer: B

3) The cause of poor opsonization of IgM

- A. Low affinity of IgM
- B. Low avidity of IgM
- C. No receptor on monocytes
- D. IgM can't stimulate immune response
- E. Low concentration of IgM

Answer: C

4) TAP \_\_\_ transverse of peptide through endoplasmic reticulum bilayer to bind \_\_\_\_.

- A. Permits, MHC1
- B. Permits, MHC2
- C. Prevents, MHC1
- D. Prevents, MHC2
- E. Prevents, MHC3

Answer: A

5) Germinal reactions include all of the following except:

- A. Somatic hypermutation
- B. Affinity maturation
- C. Low affinity antibodies
- D. Memory formation
- E. Plasma cells formation

Answer: C

6) The principal function of complements:

- A. Mediates histamine release **والجبر قريب..**
- B. Bind with antibody to lyse cells

ولن يبق من هذا الحزن إلا ذكرى تُخبرك دوماً، أن من كان مع الله كان الله معه **Answer: B**

**7) Monoclonal antibodies are secreted by:**

- A. Hybridoma
- B. Myeloma
- C. Lymphocytes
- D. Plasma cells

**Answer:A**

**8) After MHC2 reaches the endosome, clip is released by binding of MHC2 with\_\_\_, in order to bind peptides instead of clip.**

- A. HLA-DR
- B. HLA-DM
- C. HLA- DQ
- D. HLA-B
- E. TNF-B

**Answer:B**

**9) Negative selection of T cells results in cells that:**

- A. Can bind to foreign antigen
- B. Can bind to self MHC
- C. Can not bind to self MHC
- D. Can bind to self antigen
- E. Can not bind to self antigen

**Answer:E**

**10) EBV infects B cells by binding to:**

- A. BCR-IgM
- B. BCR-IgD
- C. CD2
- D. CR2
- E. TCR

**Answer:D**

**11)The macrophage need a complement (or opsoizing)with IgM because:**

- A. The IgM has low affinity with macrophage
- B. The IgM has low concentration
- C. The IgM can't stimulate the immune response
- D. The macrophage doesn't have receptor for IgM

**Answer:D**



وكل متاعِ الإنسان أجورٌ ليس يعلمها.

**12) Negative selection is test used to ensure the T cell :**

- A. Can bind with self MHC**
- B. Can't bind self MHC**
- C. Can bind to antigen**
- D. Can bind to antibody**

**Answer:B**

**13)True regarding fab fragment 2fab**

- A. Generation from papain enzyme**
- B. Bind with antigen receptor**

**Answer:A**

**14) The alpha chain in T cell lacks of :**

- A. Variable region**
- B. Diversity**
- C. Joining**
- D. Kappa**
- E. Lambda**

**Answer:A**

**15) Which of the following foreign body characteristics lead to immune response?**

- A. high biodegradable**
- B. Hapten**
- C. Low molecular weight**
- D. Low biodegradable**
- E. Additive food**

**Answer:A**

**16) All of the following occur in the germinal center except:**

- A. Isotype switching**
- B. Affinity maturation**
- C. Low Affinity maturation**
- D. Heavy class switching**
- E. Memory cell formation**

**Answer:C**

**17) The IgM receptor need to complement to do opsinisation because**

- A. Low affinity of IgM**
- B. Low avidity of IgM**
- C. Dont have receptor on monocytes**
- D. Low valency**

**Answer:D**

**ما اشتدَّت وتَعَسَّرت واستحالت ، إلا واستسهلت وتيسَّرت واستهانت.**



18) All the following are activated receptor except:

- A. FcY2B
- B. FcYR1

Answer:A

19) All the following opsinon except?

- A. C3a
- B. C3b
- C. C5b

Answer:A

20) All the following in the b cells except ?

- A. CD2
- B. CD22
- C. CD40
- D. CD40LN

Answer:D

21) The receptor that transport IgA into mucosal:

- A. Poly Ig receptor

22) The immunoglobulin that cant cross to placentae:

- A. IgG1
- B. IgG2
- C. IgG3
- D. IgG4

Answer:B

23) The least concentration IgG subclass in blood

- A. IgG1
- B. IgG2
- C. IgG3
- D. IgG4
- E. IgG5

Answer:D

24) The right order of immunoglobulin related to its concentration

- A. IgG. IgA. IgM. IgD. IgE
- B. IgG. IgD. IgM. IgE. IgA

Answer:A

25) The antibodies that lack from hinge region :

- A. IgG
- B. IgD
- C. IgA
- D. IgM&IgE

Answer:D

إِنَّ لِلَّهِ يَكْشِفُ الْكُرْبَ وَيُخَفِّفُ الصِّيقَ بِكَثْرَةِ الصَّلَاةِ عَلَى النَّبِيِّ ﷺ .

**26) IgH protein formed on:**

- A. Mature b cells
- B. Immature b cells
- C. Pre b cell
- D. Pro b cells
- E. Stem cell

**Answer:C**

**27) Complement activation done by :**

- A. IgM
- B. IgG
- C. IgD
- D. IgM+IgG

**Answer:D**

**28) All have stimulated effect except:**

- A. FcyR1
- B. FcyR3A
- C. FcyR2B
- D. FcyR2A

**Answer:C**

**29) Which one has the highest affinity:**

- A. FcyR3b
- B. FcyR2A
- C. FcyR1
- D. FcyR2b

**Answer:C**

**30) All are include intra epithelium cells except:**

- A. Sense carbohydrates
- B. Have a CD3+
- C. Need a MHC1 to presenting the antigen
- D. Part of innate immune

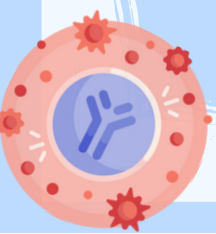
**Answer:C**

**31) The IgH found on :**

- A. Immature B cell
- B. Pre-B cell
- C. Pro-B cell
- D. CD8

**Answer:B**

**"وَهُوَ مَعَكُمْ أَيْنَ مَا كُنْتُمْ وَاللَّهُ بِمَا تَعْمَلُونَ بَصِيرٌ"**





32) The subclass of IgG that has lowest serum concentration is select one :

- A. IgG1
- B. IgG2
- C. IgG3
- D. IgG4
- E. IgG5



Answer:D

33) The Fc receptor that IgA bind's with:

- A. Poly Ig receptor

34) What is type of endogenous protein that expressed on MHC1 surface :

Ans: Proteasome antigen

35) What is the stimulation of eosinophils :

- A. CD4-Th1
- B. CD4-Th2
- C. CD4-Th17
- D. CD8-Th1
- E. CD8-Th2

Answer:C

36) Li variant ..... Peptide binding site and when fused ..... Li variant and bind peptide ?

Ans: Block / degraded

37) Where MHC1 binded on CD4 ?

- A. Alpha1
- B. Alpha2
- C. Beta1
- D. Beta2
- E. Alpha3

Answer:E

38) Single positive T cell is transform to ..... in ..... :

- A. Double positive, cortex
- B. Double positive, medulla
- C. Double negative, cortex
- E. Double negative, medulla

Answer:B

اللهم البشائر لقلوبٍ تنتظر. ✨

**39) All of the following is true regarding of TH1 exept:**

- A. activation of neutrophil**
- B. activation of NK cells direct through INF gamma**
- C. activate CD8 T cells**
- D. activate B cell to secret IgE**

**Answer:D**

**40) High affinity fc ?**

- A. Fc $\gamma$ R1**
- B. Fc $\gamma$ R2A**
- C. Fc $\gamma$ R3A**

**Answer:A**

**41) TAP ..... Enter antigen to ER and bind to.....:**

**Ans: permit,MHC1**

**42) MHC1 ?**

- A. Protosome antigen**
- B. Phagolysosome antigen**

**Answer:A**

**43) What types of Ab that make complement activation ?**

- A. Igm only**
- B. IgG only**
- C. IgE**
- D. IgD**
- E. Igm and IgG**

**Answer:E**

**44) Igg with lowest concentration;**

- A. Igg1**
- B. Igg5**
- C. Igg4**

**Answer:C**

**45) Chemotaxis of neutrophils and macrophages is function of?**

- A. Th1**
- B. TH17**
- C. CD8 T-cells**

**Answer:B**



**اللهم إني أبرأ من حولي وقوتي إلى حولك وقوتك، فلا حول ولا قوة لي إلا بك!**



**46) Why does the macrophage not bind to the IgM antibody?**

- A. IgM are bulk in size
- B. IgM are insoluble
- C. IgM form polymers
- D. Macrophages do not have receptors to IgM
- E. Actually, macrophages can bind to IgM

**Answer:D**

**47) Constant region bind Cd4 in MHC II is :**

- A. Alpha 1
- B. Alpha 2
- C. Beta 1
- D. Beta 2

**Answer:D**

**48) Negative feedback of B cell activation:**

- A. CD5
- B. CD11
- C. CD20
- D. CD22
- E. CD86

**Answer:D**

**49) CD3 recognize any cells?**

- A. CD4 and CD8 T cell
- B. B cell
- C. CD4 t cell
- D. CD8 T cell
- E. CD8 and CD4 t cell

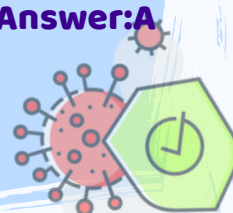
**Answer:A**

**50) .....of thymocytes is necessary to produce a T-cell capable of recognize self MHC molecules. Select one:**

- A. Positive selection
- B. Negative selection
- C. Apoptosis
- D. Receptor editing
- E. Isotype switching

**Answer:A**

لن يجلب السعي شيئاً لا نصيب به  
أو يمنع الحرص ما قد قدر الله



51) All are functions of Th1. Except:

- A. Activate CD8
- B. Activate B cell to secret IgE
- C. Active NK to do direct killing of infected cell(IFN gamma)
- D. Activate neutrophils
- E. Aid in cell mediated immunity

Answer: B

52) Which of the following is not true regarding Fc region of antibodies?

- A. Constant region
- B. Binds macrophages receptors
- C. Binding to Ag

Answer: C

53) Which of the following gene clusters do not contribute to light chain?

- A. Variable light chain
- B. Constant light
- C. TCR beta chain
- D. Diversity gene
- E. Joining

Answer: D

ورغم كلِّ جهدٍ بُذِلَ وآخر يودُّ أن يُبذَلَ فلا وصولَ لنا دونَ توفيقِ الله، ولا رجاءَ لنا سوى أن يحفَّ التوفيقُ طريقنا ويُتَوَجَّ نهايةً بالرِّضا التَّامِّ.. هذه الليالي التي تسبقُ الامتحانات، والتي يملأها كلُّ شعورٍ متناقضٍ، هي التي تُعرِّفنا على قوتنا، وهي التي تُوقظنا من متهانتنا.... ونعودُ الآن لنقفَ بعد ألف سقوطٍ، والأملُ يحتضنُ قلوبنا مُعلنًا استلامه للطريق، فنمضي سعيًا دونَ انتظارٍ الشغف، مُقبلون دونَ النَّظرِ إلى خلف..

لُجَيْنُ الشُّرُوفِ

