

Athar

Immunology Mid

Done By:

Raneem Bashtawi

Designed By :

Raneem Dmour



1. Which of the following accurately describes a difference between B cells and plasma cells?

- A) Plasma cells express CD20, while B cells do not.
- B) Plasma cells are the primary cells responsible for antibody production, while B cells do not produce antibodies.
- C) B cells have a high level of immunoglobulin production, whereas plasma cells do not.
- D) B cells are short-lived and primarily function in antibody production, while plasma cells are long-lived and produce antibodies.

Answer: b

2. Which of the following antibodies does not have a hinge region?

- A) IgG
- B) IgD
- C) IgM + IgE
- D) IgA
- E) IgE only

answer: c

3. Which of the following is not an opsonin?

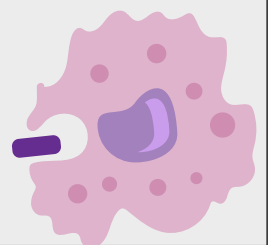
- A) C2a
- B) C5b
- C) C3b
- D) C2b
- E) c4b

Answer: a

4. Which one causes More complement activation:

- A) IgG1
- B) IgA
- C) IgG3
- D) IgM

Answer: d



5. Which of the following genes don't contribute to light chain?

- A) variable
- B) joining
- C) diversity

Answer: c

6. MHC2 in ER can not bind endogenous AG because of the Li variant that blocks the binding site, while moving to endosome part this variant will be degraded:

- a) activate.... degraded
- b) block... activated
- c) activate... block
- d) block.... degraded

Answer: d

7. Which of the following gene clusters do not contribute to light chain?

- A) Variable Light chain
- B) Constant Light
- C) TCR beta chain
- D) Diversity gene
- E) Joining

Answer: c

8. Negative selection of T cells results in cells that:

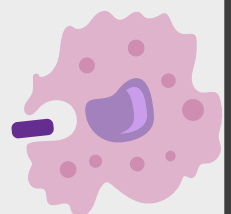
- A) Can bind to foreign antigen
- B) Can bind to self MHC
- C) Cannot bind to self MHC
- D) Can bind to self antigen
- E) Cannot bind to self antigen

Answer: e

9. What's the similarity between IgG and IgE?

- A) Structure
- b) Function
- c) Valency
- d) Location

Answer: c



10. What's a process that looks like negative selection in T cells but happens in B cells?

- a) Clonal expansion
- b) Isotype switching
- c) Receptor editing
- d) Positive selection

Answer: c

11. Which one of these complement proteins causes chemotaxis?

- a) C5b
- b) C7
- c) C3a
- d) C9

Answer: c

12. What is correct about C3b?

- a) Causes cell lysis
- b) Opsonization of antigen
- c) triggers immunization
- d) Induces chemotaxis

Answer: b

13. All of these signs occur in inflammation except:

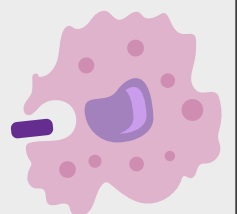
- A) heat
- B) pain
- C) redness
- D) tumor
- E) cyanosis

Answer: e

14. Where does the double positive T cell transition to a single positive T cell?

- a) medulla
- b) Lymph node
- c) bone marrow
- d) Cortex

Answer: a



15. Which part connects CD4 to MHC class II?

- A) Beta-1 chain
- B) Beta-2 chain
- C) Alpha-1 chain
- D) Alpha-2 chain

Answer: b

16. What helps IgA go to the place where secretion occurs?

- A) Fc receptor
- B) Secretory component
- C) Poly-Ig receptor
- D) J chain

Answer: c

17. One function of complements is to:

- A) Enhance phagocytosis
- B) Activate T cells
- C) Release histamine
- D) Promote apoptosis

Answer: c

18. (.....) of B cell is replacement to negative selection of T cell:

- A) negative selection
- B) positive selection
- C) receptor editing

Answer: c

19. Which one of these options creates C5 convertase?

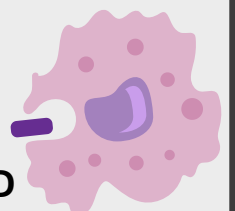
- A) C3bBb
- B) C4b2a
- C) C2b4b3b
- D) C4b2a3b

answer:

20. All of the following are expressed on B cells except:

- A) CD19
- B) CD20
- C) CD21
- D) CD40L

answer: D



21. Which antibody doesn't transfer through the placenta?

- A) IgG1
- B) IgG2
- C) IgG3
- D) IgG4

Answer: b

22. What makes chemotaxis for neutrophils and macrophages?

- A) Th1 + CD8
- B) Th2 + CD4
- C) Th17 + CD4
- D) Treg + CD4

Answer: c

23. What is responsible for the separation of Bb:

- A) Factor h
- B) Factor I
- C) Dac

Answer: b

24. What type of cell contains CD45RO+?

- A) Memory T cell
- B) plasma cell

Answer: a

25. What causes a negative signal to B cell activation ?

- A) Cd22
- B) Cr2
- C) Cd59

Answer: a

26. What transfers naive cells to secondary lymph nodes?

- A) Lymphatic vessels
- B) Blood vessels
- C) Venules from HEV
- D) Efferent lymphatics

Answer: c

27. In what phase does the B cell have a heavy chain surrogate with a light chain?

- A) Pro-B cell phase
- B) Pre-B cell phase
- C) Immature B cell phase
- D) Mature B cell phase

Answer: b

