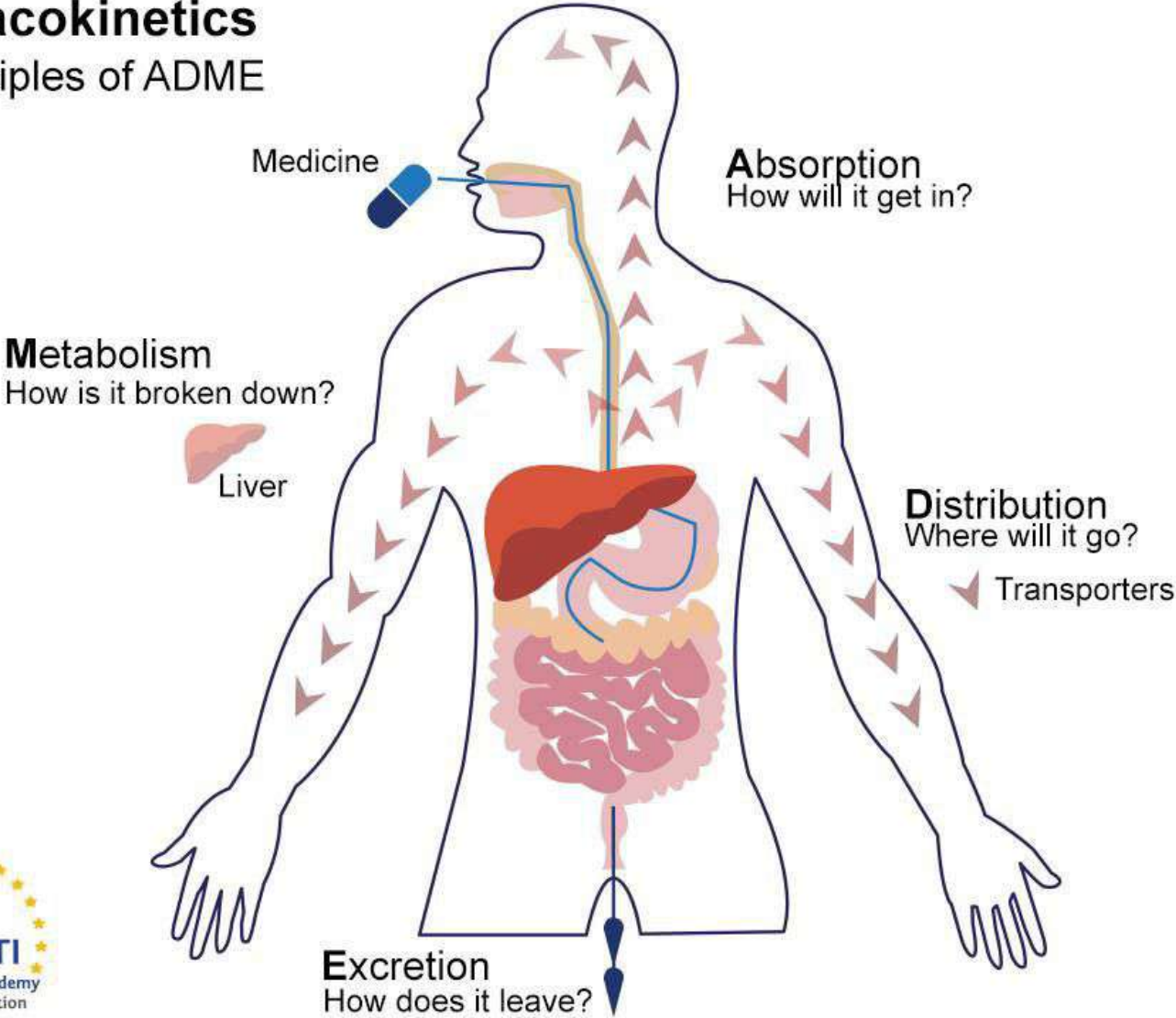


# Pharmacokinetics

The principles of ADME



# PHARMCOKINETICS REVIEW

## Definition

*Highest concentration of a drug in the blood stream*

*Lowest concentration of a drug in the blood stream*

When serum drug levels in the body remain *constant*

Time for serum drug concen. to *decrease by 50%*

When a *proportion* of the drug is eliminated per unit of time (50%/hr)

When a constant *amount* of drug is eliminated per unit of time (15 mg/hr)

## Pharmacokinetic Term

Peak

Trough

Steady State

Half-life ( $t_{1/2}$ )

First-order kinetics  
(Mnemonic: **F**irst cut the cake into **p**ortions)

Zero-order kinetics  
(Mnemonic: **Z**ero (0) shows an **a**mount)