

Microbiology

Archive

lab 6+7

Corrected By:

Amani Ibrahim

Designed By :

Raneem Dmour



Microbiology

This figure represents.....?

- a Taenia solium Scolex.
- b. Taenia saginata Scolex
- c Scolex of Echinococcus granulosus.
- d. Diphylobothrium latum Scolex
- e Mature proglottid of Dipylidium canine



Answer: A

following structure of Fasciola which indicated by arrow A?

- a. Testes
- b Orai sucker
- C. ventral sucker
- d Branched ovaries
- E. uterus



Answer: C

The following EGG is belonging to which trematodes?

- a Fasciola spp
- b Heterophyes heterophyes.
- c Dendriticum Dicrocoelium
- d. Schistosoma sp
- E. Paragonimus westermani



Answer: A

Microbiology

142) Define the following structure of Fasciola?

- A. Testes
- B. Eggs.
- C. Cercaria
- D. Metacercaria
- E. Miracidium



Answer: C

The egg below is related to:

- A- Capillaria philippinensis
- B- T. Solium
- C- Enterobius vermicularis



Answer: C

The true feature according to the photo blow that it is:

- A- Enterobius vermicularis male
- B- Hasnot esophagus
- C- Hasnot lips
- D- Enterobius vermicularis Female



Answer: A

Microbiology

The name of the tapeworm below:

- A. Taenia Solium
- B. Taenia Saginata
- C. Diphylobothrium latum



Answer: B

The name of the Egg below is:

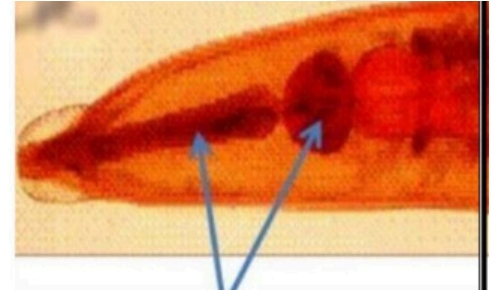
- A. Coracidium
- B. Diphylobothrium latum
- C. T. Saginata



Answer: B

153) Arrows point to?

- A. Cellular oesophagus.
- B. Double bulbed oesophagus.
- C. Club shaped oesophagus
- D. Cylindrical oesophagus e Rhabditiform oesophagus



Answer: B

«فكايد إلى أن تبلغ النفس عذرها
وكن في اقتباس العلم طلاع أنجد»

ولا يذهبن العُمر منك سهلا
ولا تغبنن في النعمتين بل اجهد»