

Athar

MSS

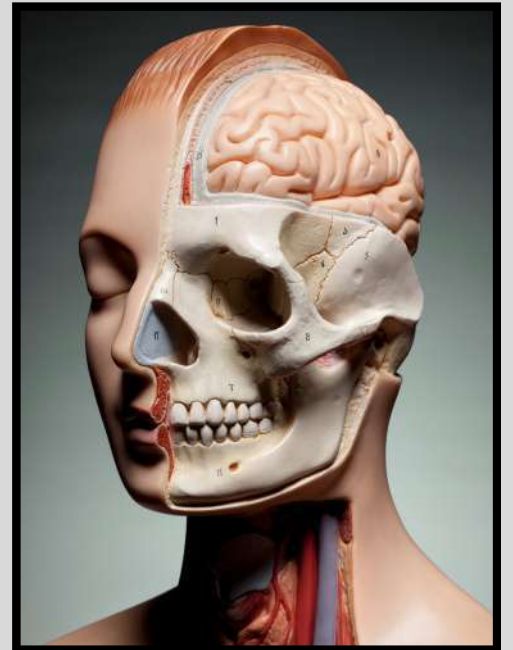
Mid

Done By:

Mohammad Al faqeeh

Designed By :

Raneem Dmour



1. Which nerve cross over sternomastiod :

- A- Great auricular nerve.
- B- Lesser occipital nerve.
- C- Transverse cervical nerve.
- D- Accessory nerve.
- E- Phrenic nerve.

Answer: C

2. Middle meningeal artery pass through :

- A- Foramen spinosum.
- B- Foramen lacerum.
- C- Foramen ovale.
- D- Carotid canal.
- E- Hypoglossal canal.

Answer: A

3. Ullrich congenital muscular dystrophy gene mutation :

- A- COL6A4
- B- COL6A1
- C- COL4A1
- D- COL4A3
- E- COL2A1

Answer: B

4. One of the following is not true regards elastin and collagen :

- A- Both are major components of skin tissue.
- B- Both contain hydroxyapatite.
- C- Both can be crosslinked covalently.
- D- Both are glycosylated.
- E- Both are rich in glycine and proline.

Answer: D



5. Enthesitis is :

- A- Inflammation in tendon.
- B- Inflammation in joint.
- C- Inflammation in eye.
- D- Inflammation in muscle.
- E- Inflammation in skin.

Answer: A

6. All of the following is treatment for RA except :

- A- Methotrexate.
- B- Cyclosporine.
- C- Paracetamol.
- D- Colchicine.
- E- Hydroxychloroquine.

Answer: D

7. A patient underwent an organ transplantation, and after operation he began taking azathioprine to prevent organ rejection. Shortly after, he was diagnosed with gout. Which of these gout medications is forbidden for him to take :

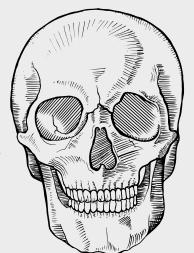
- A- Allopurinol.
- B- Probenecid.
- C- Colchicine.
- D- Pegloticase.
- E- Corticosteroids.

Answer: A

8. Which type of collagen the pericardium consists of :

- A- Type I.
- B- Type II.
- C- Type III.
- D- Type IIII.

Answer: A



9. Which bacteria of the following is coagulase negative and has sexual activity :

- A- Staphylococcus epidermidis.
- B- Staphylococcus saprophyticus.
- C- Staphylococcus aureus.
- D- Streptococcus pyogens.
- E- Propionibacterium acne.

Answer: B

10. All of the following is an insertion of temporalis muscle except :

- A- Tip of coronoid process.
- B- Anterior border of coronoid process.
- C- Posterior border of coronoid process.
- D- Inner surface of coronoid process.
- E- Outer surface of coronoid process.

Answer: E

11. In which layer of muscle of the back is the spinalis muscle :

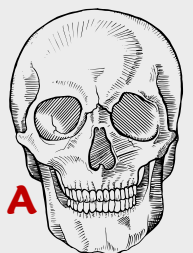
- A- Superficial extrinsic.
- B- Superficial intrinsic.
- C- Intermediate extrinsic.
- D- Intermediate intrinsic.
- E- Deep intrinsic.

Answer: D

12. One of the following structure is deeper than platysma :

- A- External jugular vein.
- B- Anterior jugular vein.
- C- Internal carotid artery.
- D- Internal jugular vein.
- E- External carotid artery.

Answer: A



13. The thickest cutaneous nerve in the body is :

- A- Great auricular nerve.
- B- Lesser occipital nerve.
- C- Great occipital nerve.
- D- Posterior auricular nerve.
- E- Third occipital nerve.

Answer: C

14. Which structure from the following related anteriorly to transverse sinus :

- A- Pterion.
- B- Infratemporal fossa.
- C- Suprameatal triangle.
- D- Asterion.
- E- Pterygomandibular fossa.

Answer: D

15. One of the following is a therapeutic use of topical steroids :

- A- Impetigo.
- B- Ulcers.
- C- Dermatophytes.
- D- Discoid lupus erythematosus.
- E- Herpes simplex

Answer: D

16. Thyrohyoid muscle supplied by which cranial nerve :

- A- C1.
- B- C2.
- C- C3.
- D- C4.
- E- C5.

Answer: A



17. All of the following are drugs induce pigmentation except :

- A- Hydroxychloroquine.
- B- Ampicillin.
- C- Bleomycin.
- D- Amiodarone.
- E- Doxycycline.

Answer: B

18. Which topical steroids from the following safe for face and skin folds :

- A- Hydrocortisone.
- B- Flucinonide.
- C- Diprolene.
- D- Colbetasol propionate.
- E- Amcinonide.

Answer: A

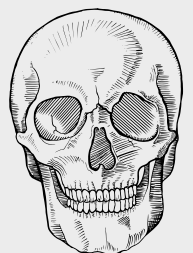
19. Which of the following adverse effects is associated with isotretinoin :

- A- Hypotension.
- B- Increased appetite.
- C- Bradycardia.
- D- Fatal anomaly.
- E- Renal effects.

Answer: D

20. What is correct about nodding and turning the head from side to side :

Answer : Atlas rotates around the dens.



21. A 5-year old girl, is brought to the paediatrician by her parents due to recurrent skin rashes. She has a history of atopic dermatitis since infancy, characterised by dry, itch patches on her skin. From the following, what is also finding in the girl with atopic dermatitis :

- A- Erythema multiforme.
- B- Asthma.
- C- Psoriasis.
- D- Urticaria.

Answer: B

22. If the hernia pass lateral to inferior epigastric artery, reach scrotum and effect on young patient, it will be :

- A- Direct inguinal hernia.
- B- Epigastric hernia.
- C- Oblique inguinal hernia.
- D- Femoral hernia.
- E- Umbilical hernia.

Answer: C

23. One of the following is incorrect according to ligaments of temporomandibular joint :

- A- Stylomandibular ligament separates parotid gland from submandibular gland.
- B- Temporomandibular ligament originated from root of zygomatic arch.
- C- Pterygomandibular ligament inserted into posterior end of mylohyoid line.
- D- Stylomandibular ligament originated from styloid process of angle of the mandible.
- E- Sphenomandibular ligament gives origin to buccinator and superior constrictor muscle of the pharynx.



Answer: E

24. All of the following is true about facial artery except :

- A- Enter the face by hooking around lower border of the mandible.
- B- Ends as superior labial artery.
- C- Has inferior labial branch.
- D- Supply the side of the nose.
- E- Runs a tortuous course crossing the mandible.

Answer: B

25. We can identify axis by :

- A- Facet on the side of the body.
- B- No body.
- C- Odontoid process.
- D- No foramen transversarium.

Answer: C

26. One of the following drug of rheumatoid arthritis has not associated with T.B :

- A- Rituximab.
- B- Abatacept.
- C- Infliximab.
- D- Anakinra.
- E- Sarilumab.

Answer: A

27. All of the following structure form pterion except :

- A- Frontal bone.
- B- Squamous part of temporal bone.
- C- Greater wing of sphenoid.
- D- Parietal bone.
- E- Lesser wing of sphenoid.

Answer: E



28. One of the following is incorrect regarding aortic opening :

- A- Opposite T10.
- B- Part of major opening of the diaphragm.
- C- It's site is in medial plane.
- D- Azygos vein pass through it.
- E- Thoracic duct pass from it.

Answer: A

29. If the skull is elongated anterioposterior, it is called :

- A- Acrocephaly.
- B- Scaphocephaly.
- C- Anencephaly.
- D- Meningocele.
- E- Plagiocephaly.

Answer: B

30. Baby born with absence of philtrum because incomplete fusion of :

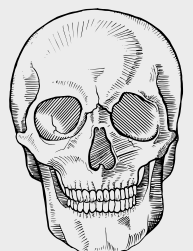
- A- Median nasal processes.
- B- Maxillary process and median nasal process.
- C- Maxillary processes.
- D- Maxillary process and mandibular process.
- E- Mandibular processes.

Answer: A

31. All of the following is related to increase in AFP except :

- A- Meningocele.
- B- Myelocele.
- C- Spinal bifida occulta.
- D- Omphacele.
- E- Meningomyelocele.

Answer: C



32. Rectus abdominus muscle of anterior abdominal wall inserted into

:

- A- 5,6,7 costal cartilage and xiphoid process.**
- B- Lower part of linea alba.**
- C- Anterior half of outer lip of iliac crest.**
- D- Lower 6 ribs.**
- E- Lumbar fascia.**

Answer: A

33. Which muscle from the following responsible of lateral flexion of the head:

- A- Rectus capitis anterior.**
- B- Rectus capitis posterior minor.**
- C- Rectus capitis lateralis.**
- D- Rectus capitis posterior major.**
- E- Longus coli.**

Answer: D

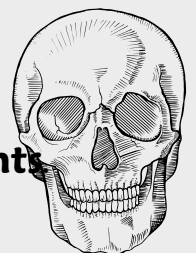
34. One of the following is true regarding furuncle :

- A- Contains only one draining point.**
- B- Can progress to septicemia.**
- C- Candida albicans may lead to it in immunocompromised patients.**
- D- called red gem.**
- E- Self limiting.**

Answer: A

35. All of the following is correct regarding baricitinib except :

- A- Tyrosine receptor inhibitors.**
- B- It is not a true biologic drug.**
- C- Marketed as a biologic drug.**
- D- Inhibit monophosphate dehydrogenase.**
- E- All type of baricitinib increased risk of venous thrombotic events.**



Answer: D

36. A 55 year old man with history of coronary artery disease present to the emergency department with chest pain. He has a known history of hypertension and diabetes mellitus.

An ECG shows ST-segment elevation and a diagnosis of MI is made. Which of the following medications should be administered immediately to help reduce mortality by preventing thrombus formation :

- A- Ibuprofen.
- B- Naproxen.
- C- Acetaminophen.
- D- Aspirin.
- E- Diclofenac.

Answer: D

37. Which of these covers the active site of action :

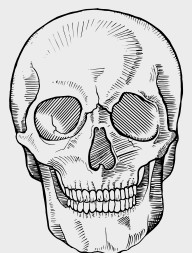
- A- Troponin C.
- B- Troponin I.
- C- Tropomyosin.
- D- Troponin T.
- E- Calmodulin.

Answer: C

38. One of the following is the function of troponin C :

- A- Binding with calcium ions for contraction.
- B- Inhibit binding of actin and myosin.
- C- Binds troponin to tropomyosin to close active sites.

Answer: A



39. One of these methods is used in heat production :

- A- Conduction.
- B- Insensible sweating.
- C- Brown fat.
- D- Radiation.
- E- Convection.

Answer: C

40. Which method of these lead to increase body temperature :

- A- Eat more protein.
- B- Using fans to make air currents.
- C- Sweat evaporation.
- D- Direct contact with objects.
- E- Increase the cutaneous blood flow.

Answer: A

41. Allergic contact dermatitis caused by all of these except :

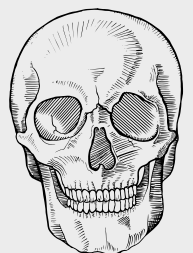
- A- Poison ivy.
- B- Chemical substance.
- C- Fungi.
- D- Latex.
- E- Radiation.

Answer: E

42. All of these muscles attached to axis except :

- A- Inferior oblique.
- B- Superior oblique.
- C- Rectus capitis posterior major.
- D- Scalenus medius.
- E- Longus coli.

Answer: B



43. Which one of the following protein responsible for connect thick filament to Z disk :

- A- Titin.
- B- Nebulin.
- C- Myomesin.
- D- α -Actinin.
- E- Troponin.

Answer: A

44. The distance between z-lines is equivalent to the length of the :

- A- M line.
- B- A band.
- C- Sarcomere.
- D- H band.

Answer: C

45. Why does stair-case phenomenon occur :

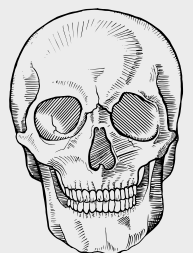
- A- High K , low Ca.
- B- High temperature , high Ca , low K and high Na.
- C- High K , low Na
- D- Low temperature , high Ca , low K and high Na.

Answer: B

46. Melanocytes are located in :

- A- Stratum corneum.
- B- Stratum granulosa.
- C- Stratum lucidum.
- D- Stratum spinosum.
- E- Stratum basale.

Answer: E



47. Most common complication of open fracture is :

- A- Infection.
- B- Compartment syndrome.
- C- Avascular necrosis.
- D- Fat embolism syndrome.
- E- Non-union.

Answer: A

48. The carbohydrate metabolism error that affect mainly on ATP is :

- A- Debrancher enzyme deficiency.
- B- Phosphofructokinase deficiency.
- C- Myo-adenylate deaminase deficiency.
- D- Lactate dehydrogenase deficiency.
- E- Acid maltase deficiency.

Answer: C

49. All of the following hormones decrease calcium except :

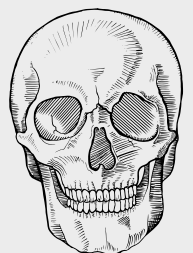
- A- Calcitonin.
- B- Thyroid hormone.
- C- Cortisol.
- D- Parathyroid hormone.

Answer: D

50. Treatment of trichenillosis is :

- A- Pentostam.
- B- Mebendazole.
- C- Ivermectin.
- D- Ketoconazole.
- E- Fluconazole.

Answer: B



51. Regarding injuries all the following statements are correct except :

- A- Accidents are an unexpected events , implies a random and uncontrollable event.**
- B- Interpersonal violence are the leading cause of injury-related deaths worldwide.**
- C- Both unintentional and intentional injuries are viewed as largely preventable events.**
- D- Injuries may be blunt or penetrating.**
- E- Disability-Adjusted Life Year (DALY) is the indicator used to quantify the loss of healthy life.**

Answer: B

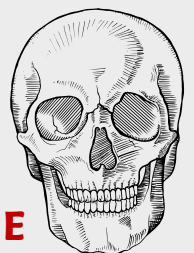
52. Regarding Musculo-skeletal injury; which one of the following statements is wrong :

- A- Death rates due to injury tend to be higher in those in the higher income groups.**
- B- Injuries , unintentional or intentional , constitute a major public health problem.**
- C- Injuries killing many people worldwide and causing many more cases of disability.**
- D- People from all economic groups suffer fatal injuries.**
- E- The poor are also less likely to make a full recovery following an injury.**

Answer: A

53. Desmoid fibromatosis percentage of B-catenin mutation is :

- A- 5%.**
- B- 10%.**
- C- 20%.**
- D- 30%.**
- E- 90%.**



Answer: E

54. One of the following rules must not be taken into consideration when adapting the job to the worker :

- A- Flexibility all begin to diminish upon reaching the age of 45.**
- B- Weight and mass tend to increase throughout the age of the early fifties (50).**
- C- Height begins to slowly diminish from the age of 30.**
- D- Lower back pain is more common in people 25 years of age and older.**
- E- Visual acuity at close range diminishes with age.**

Answer: D

55. A 3 boy patient has fever and cough with coryza and conjunctivitis, after while a rash begins from hair line spreading through out the trunk and body, the best diagnosis is :

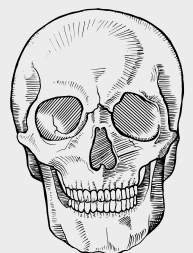
- A- Rubella.**
- B- German Measles.**
- C- Roseola.**
- D- Slapped cheek.**
- E- Chicken pox.**

Answer: A

56. Which of the following is incorrect regarding osteoarthritis diagnosis by X-ray image :

- A- Osteophytes.**
- B- Narrowing between joint bone**
- C- Bone necrosis.**
- D- Bone cyst.**
- E- Cartilage sclerosis.**

Answer: C



57. Inhibition of P53 gene and retinoblastoma gene is associated with:

- A- HSV.
- B- HHV.
- C- B19.
- D- HPV.

Answer: D

58. A 2 year old child has generalised rash affect on his trunk then to the face and extremities. The causative virus of his state is :

- A- Rubeola.
- B- B19.
- C- Roseola.
- D- HPV
- E- Rubella

Answer: C

59. One of the following is short acting non-depolarizing NMB :

- A- Succinylcholine.
- B- Mivacurium.
- C- Atracurium.
- D- Pancuromium.
- E- Rocuronium.

Answer: B

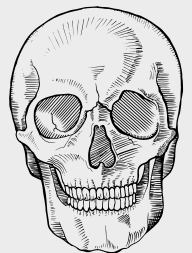
60. All of the following are therapeutic use of acetaminophen except :

- A- Anti-platelet effect.
- B- Mild to moderate pain.
- C- Anti-pyretic effect.
- D- Substitute for analgesic and anti-pyretic effect of aspirin.
- E- Patient with peptic ulcer.

Answer: A



الطب والجراحة
لجنة



Athar

MSS

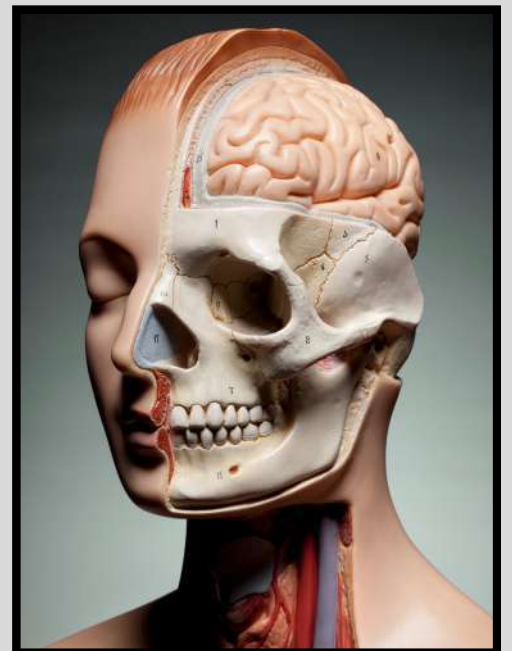
Final

Done By:

Mohammad Al faqeeh

Designed By :

Raneem Dmour



1. The virus that lead to inhibit the activity of proteins encoded p53 gene is :

- A- HPV.
- B. B19.
- C- HSV.
- D- Small box.
- E- VZV.

Answer: A

2. Which of the following nerves supplied the angle of the mandible :

- A- Lesser occipital nerve.
- B- Transverse cutaneous nerve.
- C- Great auricular nerve.
- D- Suprascapular nerve.
- E- Accessory nerve.

Answer: C

3. The mandibular nerve pass through which foramen of the skull :

- A- Foramen spinosum.
- B- Foramen ovale.
- C- Stylomastoid foramen.
- D- Foramen lacerum.
- E- Jugular foramen.

Answer: B

4. One of the following is a keratolytic agent :

- A- Hydrocortisone.
- B- Lotions.
- C- Flucinonide.
- D- Urea.

Answer: D



5. Which of the following is selective COX-2 inhibitor :

- A- Meloxicam.
- B- Diclofenac.
- C- Naproxen.
- D- Sulindac.
- E- Etoricoxib.

Answer: E

6. Uricosuric agent :

- A- Sulfapyridine.
- B- Allopurinol.
- C- Colchicine.
- D- Indomethacin.

Answer: A

7. All of the following are treatment for hyperhidrosis except :

- A- Topical steroids.
- B- Iontophoresis.
- C- Systemic agents.
- D- Botulinum toxin.
- E- Parasympathectomy.

Answer: E

8. We must take special care from the sun when UV-index is :

- A- 7-8.
- B- 2-3.
- C- 5-6.
- D- 4-5.
- E- 3-4.

Answer: C



9. The dangerous layer of the scalp is :

- A. Skin.
- B- Loose areolar tissue.
- C- Connective tissue.
- D- Aponeurosis.
- E- Pericranium.

Answer: B

10. Which one of the following measures considered as a primary prevention for musculoskeletal injury :

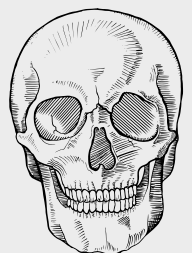
- A. Motorcycle helmets.
- B- Life vests.
- C- Seatbelts.
- D- Bullet proof vests.
- E- Trigger locks on guns.

Answer: E

11. The leading cause of difference in stain between territorial & interterritorial matrix is:

- A- The extracellular matrix richer in GAGs.
- B- Collagen type II doesn't form bundles.
- C- Proteoglycan complexes bind to the surface of type II collagen fibrils.
- D- The refractive index of collagen fibrils and ground substance is the same.

Answer: A



12. Multinucleated giant cells originated from fusion of monocytes :

- A- Osteoblast.
- B- Osteoprogenitor.
- C- Osteoclast.
- D- Chondrocyte.
- E- Chondroblast.

Answer: C

13. one of the following statement is wrong regarding muscles of mastication :

- A- Upper lateral muscle inserted into articular disc of temporomandibular joint.
- B- Lower lateral muscle inserted into pterygoid fovea.
- C- Superficial medial muscle originated from maxillary tuberosity.
- D- Deep medial muscle originated from medial surface of medial pterygoid.
- E- Deep medial muscle originated from medial surface of lateral pterygoid.

Answer: D

14. Which zone of regions of osteoclast contains lysosomes :

- A- Vesicular zone.
- B- Clear zone.
- C- Basal zone.
- D- Sealing zone.

Answer:A

15. Which layer of the epidermis called prickle cell layer :

- A- Basale.
- B- Spinosum.
- C- Granulosum.
- D- Lucidum.
- E- Corneum.



Answer: B

16. Which structure of the skull related to middle meningeal artery :

- A- Asterion.
- B- Infratemporal fossa.
- C- Suprameatal triangle.
- D- Pterion.
- E- Pterygomandibular fossa.

Answer: D

17. One of the following nerve doesn't supply the upper eyelid :

- A- Supratrochlear.
- B- Supraorbital.
- C- Infratrochlear.
- D- Infraorbital.
- E- Palpebral branch of lacrimal.

Answer: D

18. Which of the neck can turn the face to the same side :

- A. Rectus capitis posterior major.
- B- Rectus capitis anterior.
- C- Rectus capitis posterior minor.
- D- Rectus capitis lateralis.
- E- Superior oblique.

Answer: A

19. All of the following are deep relations of lateral pterygoid muscle except :

- A- Lingual nerve.
- B- Auriculotemporal nerve.
- C- Middle meningeal artery.
- D- Chorda tympani.
- E- Posterior auricular nerve.

Answer: E



20. Which of these decrease smooth muscle membrane potential :

- A- Norepinephrine.
- B- Cold.
- C- Stretch.
- D- Acetylcholine.
- E- Parasympathetic.

Answer: A

21. Most common bone tumor in children present in :

- A- Epiphysis.
- B- Vertebrae.
- C- Metaphysis of long bone.
- D- Diaphysis.
- E- Skull.

Answer: C

22. Macule, papule, vesicle and crust. In which virus this skin lesions will occur :

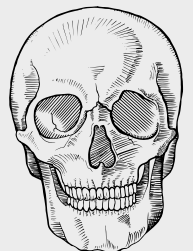
- A- B19.
- B- Rubella.
- C- Small pox.
- D- VZV.
- E- Rubella.

Answer: C

23. The sole of the foot inclined inward, this anomaly called :

- A- Talipes Valgus.
- B- Talipes calcaneus.
- C- Talipes varus.
- D- Talipes equinus.
- E- Hallux valgus.

Answer: C



24. Alveolar rhabdomyosarcoma is type of malignant mesenchymal tumour and it is come from mutation by fusion between two genes, these genes are :

- A- MYH9-USP6.**
- B- SS18-SSX.**
- C- EWSR1-FL1.**
- D- MDM2-CDK4.**
- E- FOXO1-PAX3.**

Answer: E

25. Potts disease is :

- A- Skeletal tuberculosis.**
- B- Sclerotic phase of pagets.**
- C- Lytic phase of pagets.**
- D- Pyogenic osteomyelitis.**

Answer: A

26. Baby with no philtrum in :

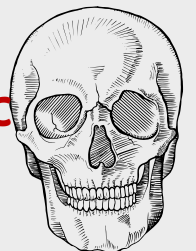
- A- Median harelip.**
- B- Medial harelip.**
- C- Unilateral harelip.**
- D- Bilateral harelip.**

Answer: A

27. All of the following are true about inflammatory myopathy except :

- A- Treated successfully with corticosteroids.**
- B- Autoimmune disorder.**
- C- Endomysial inflammatory infiltrate contain CD4+.**
- D- Increased expression of MHC I.**

Answer: C



28. One of the following is not found in Klippel Feil syndrome :

- A- Fusion of two lumbar vertebrae.
- B- Short neck.
- C- Facial asymmetry.
- D- Low hairline.
- E- Limited neck mobility.

Answer: A

29. One of the following has direct control on calcitonin release :

- A- Hypocalcemia.
- B- Hypophosphatemia.
- C- Hypercalcemia.
- D- Hyperphosphatemia.

Answer: C

30. Melanin is in all of the following except :

- A- Hair.
- B- Nail.
- C- Skin.
- D- Brain stem.
- E- Spinal cord.

Answer: E

31. Which statement is true regarding buccinator muscle :

- A- Its nerve supply from temporal and zygomatic nerves.
- B- Its upper fibers originate from the alveolar process of maxilla opposite canine teeth.
- C- Supplied by buccal branch of mandibular nerve.
- D- Blowing.
- E- Its lower fibers originate from the alveolar process of mandible opposite pre molar teeth.

Answer: D



32. Styloid process give attachment for all of the following except :

- A- Stylomandibular ligament.**
- B- Stylohyoid muscle.**
- C- Styloglossus muscle.**
- D- Stylohyoid ligament.**
- E- Stylolaryngeus muscle.**

Answer: E

33. Lymphatic drainage in carotid triangle supplied by :

- A- Submandibular lymph nodes.**
- B- Submental lymph nodes.**
- C- Deep cervical lymph nodes.**
- D- Prelaryngeal lymph nodes.**
- E- Pretracheal lymph nodes.**

Answer: C

34. A patient complaining from right knee pain, and then experiencing additive ankle pain. What is the possible diagnosis :

- A- SLE.**
- B- Rheumatoid arthritis.**
- C- septic arthritis.**
- D- Reactive arthritis.**

Answer: D

35. Kind of bacteria that secrete toxins of scalded skin syndrome :

- A- Staphylococcus aureus.**
- B- Streptococcus pyogens.**
- C- Staphylococcus epidermedis.**
- D- Streptococcus pneumonia.**
- E- Propionibacterium acne.**

Answer: A



36. One of the following is true regarding tinea capitis :

- A- The most common kind of athlete's foot.
- B- Ring like rash with a raised hand.
- C- Leaving a scar and alopecia after healing.
- D- Mostly in obese and diabetics.
- E- Introduced into subcutaneous tissue through trauma.

Answer: C

37. Leading cause of chiclero ulcer is :

- A- L.tropica.
- B- L.Major.
- C- Laethiopica.
- D- L.mexicana.
- E- L.brazillensis.

Answer: D

38. One of the following is incorrect about trichenillosis :

- A- Man is intermediate host.
- B- Adult is infective stage.
- C- Adult live in small intestine.
- D- Larvae is diagnostic stage.
- E- Treated by mebendazole.

Answer: B

39. One of the following structure is not lateral relation of psoas major :

- A- Iliacus muscle.
- B- Ilioinguinal nerve.
- C- Femoral nerve.
- D- Iliohypogastric nerve.
- E- Genitofemoral nerve.

Answer: E



40. One of the following is wrong about infrahyoid muscles :

- A- The four infrahyoid muscles are : sternohyoid, sternothyroid, Odontoid and thyrohyoid.
- B- All muscles supplied by ansa cervicalis except thyrohyoid only by C1.
- C- Sternohyoid muscle depresses the hyoid bone.
- D- All muscles are innervated by vagus nerve.
- E- Sternohyoid muscle attached to the back of medial part of the clavicle.

Answer : D

41. In patient with Steven Johnson syndrome, all of the following consistent with the diagnosis in this patient are true except :

- A- Caused by mycoplasma.
- B- Recent drug exposure.
- C- Detachment to epidermis (more than 30 percent of skin affected).
- D- Discrete confluent zone of basal epidermal necrosis and blister.
- E- Involve mucosa layer.

Answer: C

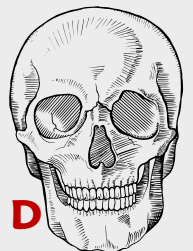
42. Which one of the following makes 7th vertebrae not typical :

- A- It has long non bifid spine.
- B- It has no body.
- C- It has odontoid process.
- D- It has facet.
- E- It has short bifid spine.

Answer: A

43. When you rotate your head to the left side, which muscle is used :

- A- Trapezius.
- B- Levator scapulae.
- C- Infrahyoid.
- D- Right sternocleidomastoid.
- E- Left sternocleidomastoid.



Answer: D

44. Which statement is wrong regarding heat stroke :

- A- Occurs in hot humid atmosphere.
- B- It's most severe form of heat exhaustion.
- C- All heat loss mechanism work.
- D- Intravenous fluid intake is treatment.
- E Depression of thermoregulatory centre occur.

Answer: C

45. A 32 year old woman discoveres she is pregnant and eagerly awaits her first ultrasound at 8 weeks gestation. During the ultrasound, the doctor notices an abnormality: the embryo appears small than expected and further examination reveals a loss of somite cells, Which muscle of the following you expect to affect :

- A- Latissimus dorsi.
- B- Rhomboid major.
- C- Trapezius.
- D- Levator scapulae.
- E- Longissimus capitis.

Answer: E

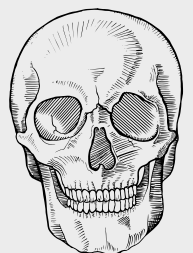
46. Can not be considered as a risk factor for rickets :

- A- Inflammation.
- B- Prematurity.
- C- Neoplasm.
- D- Congenital.
- E- Nutrient.

Answer: C

47. What is the best describe of muscle contraction :

Answer: Strength of contraction depends on the initial length of muscle fiber.



48. One of the following is true about succinylcholine :

- A- Causes arrhythmia and hyperkalemia.
- B- Neostigmine is used to reverse it's toxicity.
- C- Atropine is used in malignant hyperthermia.
- D- Has long duration of action.
- E- Affect the impulse transmission from motor nerves.

Answer: A

49. All of the following statement are true about skeletal muscle relaxant except :

- A- Suggamadex is selective inhibitor to rocuronium.
- B- Botulinum toxin used as adjuvant to general anaesthesia.
- C- Depolarizing neuromuscular agents used for endoscopy.
- D- Diazepam is CNS depressant while dantrolene is hepatotoxic.
- E- Mivacurium is a short acting competitive neuromuscular blocker.

Answer: B

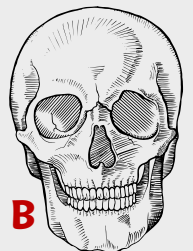
50. Which structure is an elastic fiber :

- A- Posterior longitudinal ligament.
- B- Supraspinous ligament.
- C- Intertransverse ligament.
- D- Ligamentum flavum.
- E- Anterior longitudinal ligament.

Answer: E

51. A patient with an injury in his face, he lost sensation of skin above the angle of the mandible. The injured nerve is :

- A- Auriculotemporal nerve.
- B- Great auricular nerve.
- C- Marginal mandibular nerve.
- D- Supraclavicular nerve.
- E- Accessory nerve.



Answer: B

52. All of the following contribute in the formation of rectus sheath except :

- A- External oblique aponeurosis.
- B- Internal oblique aponeurosis.
- C- Fascia transversalis.
- D- Inguinal ligament.
- E- 5,6,7 costal cartilage.

Answer: D

53. One of the following is wrong about Brown fat :

- A- It is as electrical blanket.
- B- Important for acclimatization to cold.
- C- It is found in infants but not in adult.
- D- Richly supplied by sympathetic nerve fibers.
- E- Way of heat loss.

Answer: E

54. Regarding insensible respiration, the correct statement is :

- A- Not important in painting animals.
- B- Mechanism of heat gain.
- C- Non evaporative mechanism.
- D- At rest, about 15-25 ml of water are evaporated per hour.
- E- Vaporization of 1 ml of water causes loss of 0.6 C.

Answer: E

55. Acidosis calcium absorption, while alkalinity calcium absorption, but level of calcium is unchanged.

- A- decrease , increase , bound
- B- increase , decrease , bound
- C- increase , increase , complex
- D- decrease , increase , complex
- E- increase , decrease , complex

Answer: A



56. When athletes do warm up, which kind of muscle do they use :

- A- Isometric.
- B- Tetanus.
- C- Isotonic.
- D- Clonus.

Answer: C

57. Which statement is wrong about tacrolimus :

- A- It's a calcineurin inhibitors that inhibit T cells proliferation.
- B- No skin atrophy.
- C- EDA is concerned about long term use because it lead to skin cancer.
- D- Dermatologists are concerned of it.

Answer: D

58. Which one of the following disease characterised by high level of histamine :

- A- Erythema multiforme.
- B- Psoriasis.
- C- Lichen planus.
- D- Urticaria.
- E- Pemphigus vulgaris.

Answer: D

59. All of the following are increased risk of fracture except :

- A- Diabetes.
- B- Obesity.
- C- Radiotherapy.
- D- Infection.
- E- Smoking.

Answer: E



60. There are two types of sweat gland, the true statement about it is

:

A- Merocrine has adrenergic innervation while apocrine has cholinergic innervation.

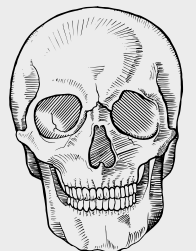
B- Apocrine ducts open in skin surface.

C- Both have two types of secretory cells.

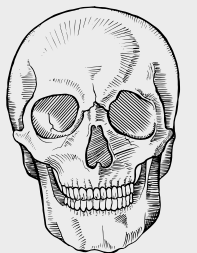
D- Apocrine is truly merocrine in mechanism of secretion.

E- Merocrine secretion is viscous and odorless.

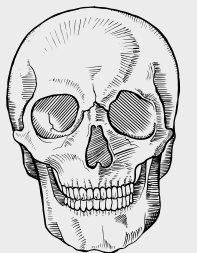
Answer: D



الطب والجراحة
بجنتنة

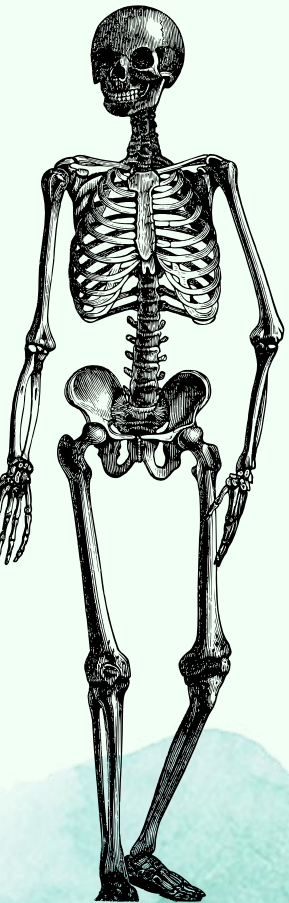
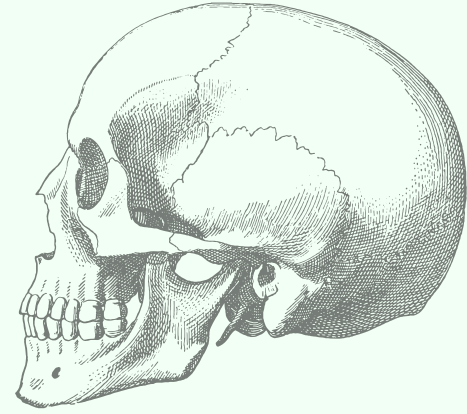


الطب والجراحة
بجنتنة

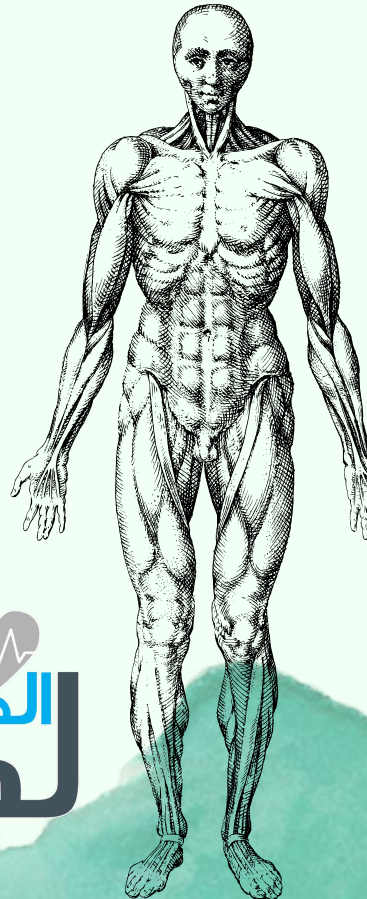


MSS Archive

Mid - رَوَح



Done by: Joud Mahadeen
Emran Younis
Raghad Abu Khalaf



الطب الجراحة
لجنة



1. Content of the Carotid sheath except :

- A. Internal carotid artery**
- B. Common carotid artery**
- C. Vagus nerve**
- D. Internal jugular vein**
- E. Sympathetic trunk (chain)**

Answer: E

2. These symptoms (cough . coryza . conjunctivitis) are with which of the following :

- A. Rubeola**
- B. Roseola**
- C. Rubella**
- D. HSV-6**
- E. Varicella-zoster virus**

Answer: A

3. The drug of choice of cutaneous larva migrans is :

- A. Albendazole**
- B. Thiabendazole**
- C. Ivermectin**
- D. Mebendazole**
- E. Pentostam**

ANSWER : C

4. The MELANIN Stain found in all of these ; exsept :

- A. Skin**
- B. Hair**
- C. Iris**
- D. Spinal cord**
- E. Brain stem**

ANSWER : D

اللهم قوة، اللهم طاقة، اللهم صبراً





5. Infratemporal surface of greater wing of sphenoid gives attachment to :

- A. Superficial head of medial pterygoid muscle**
- B. Deep head of medial pterygoid muscle**
- C. Upper head of lateral pterygoid muscle**
- D. Lower head of lateral pterygoid muscle**

ANSWER : C

6) patient comes to hospital with thrombocytopenic purpura history. He complains from almost everyday headache with dull feeling, and this headache begins afternoon and persists till sleeping. A drug to control headache is perscribed to the patient, what is it?

- A) Paracetamol**
- B) Meloxicam**
- C) Ibuprofen**
- D) Naproxen**
- E) Aspirin**

Answer: A

7) 7 years girl goes to hospital and proceeds a vaginal grape like tumor excission. A pathologist reveals that this tumor is:

- A) dedifferentiated rhabdomyosarcoma**
- B) embryonal rhabdomyosarcoma**
- C) Botryoids rhabdomyosarcoma**
- D) uterine leiomyosarcoma**
- E) pleomorphic rhabdomyosarcoma**

Answer: C

8) Can not be considered as a risk factor for rickets:

- A) Inflammation**
- B) Prematurity**

اللهم قوة، اللهم طاقة، اللهم صبراً





- C) Neoplasm**
- D) Congenital**
- E) Nutrient**

ANSWER:

9) mesenchymal cells gives all the following cells except:

- A) Osteoclast**
- B) osteoblast**
- C) chondroblast**
- D) chondrocyte**
- E) Adipocyte**

ANSWER: A

10) Alport Syndrome molecular basis :

- A) Col4A1, Col1A2**
- B) Col4A1, Col1A5**
- C) Col4A1, Col6A1**
- D) COL4A3 , COL4A1**
- E) COL4A5 , COL6A1**

ANSWER : B مش أكيد

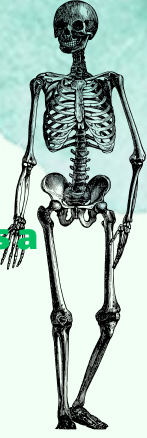
11) Not related to collagen diseases:

- A) Nutritional deficiency**
- B) Secretion**
- C) Post translational modifications**
- D) post transcriptional modifications**

Answer: B



اللهم قوة، اللهم طاقة، اللهم صبراً



12) surgery of thyroid with anesthesias leads to tachypnea and hyperthermia as a complication:

- A) Suxamethonium**
- B) Meloxicam**
- C) gallamine**
- D) pancornium**
- E) D-tubocurarine**

Answer: A

13) Which of these bones is not paired:

- A) Maxilla**
- B) Lacrimal**
- C) Nasal**
- D) Sphenoid**
- E) Zygomatic**

Answer: D

14) How many foramina are in the mandible:

- A) 2**
- B) 3**
- C) 4**
- D) 5**
- E) 6**

Answer: C

15) Which of these structures is attached to the posterior end of mylohyoid line:

- A) Sphenomandibular ligament**
- B) Tempromandibular ligament**
- C) Stylomandibular ligament**
- D) Pterygomandibular ligament**

Answer: D

اللهم قوة، اللهم طاقة، اللهم صبراً





16) The least of the following can metastasize to bone?

- A) colon cancer**
- B) breast cancer**
- C) kidney cancer**
- D) lung cancer**
- E) prostate cancer**

Answer: A

17) Tumor that grossly resembles normal bone and associated with GARDNER SYNDROME :

- A) Ewing's sarcoma**
- B) Osteochondroma**
- C) Chondrosarcoma**
- D) Osteoma**

Answer: D

18) A 3 boy patient has had fever and cough with coryza and conjunctivitis, after a while a rash begins from hair line spreading through out the trunk and body, the best diagnosis is:

- A) Rubella**
- B) German Measles**
- C) Roseola**
- D) Slapped cheek**
- E) Chicken pox**

Answer: A

19) What is the difference between Eumycetoma and Actinomycetoma :

- A) Eumycetoma's granules are usually yellow**
- B) Actinomycetoma's granules are usually black**
- C) There is no difference**

اللهم قوة، اللهم طاقة، اللهم صبراً





D) Eumycetoma is caused by bacteria, and Actinomycetoma is caused by fungi

OBJ: E) Eumycetoma is caused by gram-negative organism, and Actinomycetoma is caused by gram positive organism

Answer: E

20) TNF- α receptor blocker drug :

A) Etanercept

B) Anakinra

C) Methotrexate

D) Leflunomide

E) Sulfasalazine

ANSWER: A

21) The topical steroid that used for treatment of psoriasis in face and **مش متأكد أي skin folds or Safe drug on the face**

A) Hydrocortison

B) Flucinonide

C) Amcinonide

D) Halcinonide

E) Triamcinolon

Answer: A

22) One of these is an Intermediat muscle of extrinsic back layer :

A) Longissimus capitis

B) Serratous posterior superior

C) Trapezius

D) Latissimus dorsi

E) Levator scapulae

Answer: B

اللهم قوة، اللهم طاقة، اللهم صبراً





23) The specific test for SCARLET FEVER :

- A) Shultz-Charlton**
- B) Bachman test**
- C) Montenegro test**
- D) Germ tube test**

Answer: A

24) Type of cartilage in epiglottis :

- A) Elastic cartilage**
- B) Fibro cartilage**
- C) Hyaline cartilage**

Answer: A

25) All of the following are ways to treatment of hyperhidrosis , except :

- A) Topical agents**
- B) Iontophoresis**
- C) parasympathcotomy**
- D) Botulinum toxin**
- E) Sweat gland resection**

Answer: C

26) Talipes valgus:

- A) permanent plantar flexion, walking is done on toes without touching the heel to ground .**
- B) permanent dorsiflexion, the heel rests on the ground and the toes pointed upwards .**
- C) the sole of the foot inclined outward so that walking is done on the medial side of the foot .**
- D) the sole of the foot inclined inward so that walking is done on the lateral side of the foot .**

Answer: C

اللهم قوة، اللهم طاقة، اللهم صبراً





27) The origin of the greater wing of sphenoid is :

- A) Ala orbitalis**
- B) Ala temporalis**
- C) Trabecula cranii cartilage**
- D) Hypophyseal cartilage**
- E) Parachordal cartilage**

ANSWER : B

28) The drug that inhibit dihydrofolate reductase is :

- A) Entracept**
- B) Sulfasalazine**
- C) Leflunomide**
- D) Methotrexate**
- E) Hydroxychloroquine**

Answer: D

29) All of the following are contents of anterior abdominal wall , except :

- A) Transversalis fascia**
- B) Deep fascia**
- C) Transversus abdominis**

Answer: B

30) What is the diagnostic stage for TRICHENELLA SPIRALIS : -

- A) Encysted larvae in muscle**
- B) Filariform larvae**
- C) Promastigote**
- D) Amastigote**

Answer: A

31) Which of these bones is not paired:

- A) Maxilla**

اللهم قوة، اللهم طاقة، اللهم صبراً





- B) Lacrimal**
- C) Nasal**
- D) Sphenoid**

Answer: D

32) The most important characteristic of the emissary vein:

- a) connects the outside of the skull to the inside**
- b) valvless**

Answer: B

33) Tender, swollen, and filled with pus with only one draining point:

- a) boil**
- b) furuncle**
- c) carbuncle**
- D) folliculitis**

Answer: B

34) To view the posterior aspect of the spinal cord, which structures have to be removed?

- a) pedicle and transverse processes**
- b) Spinous process, pedicle and laminae**
- c) Laminae, Spinous process**
- D) spinous process, ligamentum flavum and laminae**

Answer: D

35) All of the following about Quadratus Lumborum are correct except:

- A) It attaches to the transverse processes of all lumbar vertebrae**
- B) is innervated by T12 spinal nerve**
- C) Bilateral action leads to extension of trunk**

Answer: A

اللهم قوة، اللهم طاقة، اللهم صبراً





36) A patient has atopic dermatitis, which of these is most likely to be another symptom:

bronchial asthma

37) Which of these skin layers is only found in thick skin:

- a) Stratum corneum
- b) Stratum basale
- c) Stratum spinosum
- d) Stratum lucidum

Answer: D

38) Cartilage is:

- a) has typical vascularity
- b) avascular
- c) has low vascularity
- d) with excessive vascularity

Answer: B

39) Why does stair-case-phenomenon occur:

high temperature, high Ca, low K, and high Na

40) Which of these covers the active sited of actin:

- a) troponin C
- b) troponin I
- c) tropomyosin
- d) troponin T
- e) calmodulin

Answer: C

اللهم قوة، اللهم طاقة، اللهم صبراً





41) which of the following is wrong about buccinator?

- A) stronger in infants than in adults**
- B) pierced by buccal branch of facial nerve**
- C) prevents dripping of saliva**
- D) roofed by facial nerve**

Answer: B

42) what is correct about vertebral column ligaments and their extensions?

- A) anterior longitudinal ligament begins from axis toward sacrum**
- B) posterior longitudinal ligament begins from axis toward sacrum**
- C) supraspinous ligament begins from axis toward sacrum**

Answer: B

43) relations to scalenus anterior:

- A) both subclavian artery and vein are found posteriorly to muscle**
- B) both subclavian artery and vein are found anteriorly to muscle**
- C) subclavian artery is anterior to the muscle, while subclavian vein is posterior**
- D) the muscle intersects the subclavian artery from vein**

Answer: C

44) Sarcomere is:

between 2 z discs

45) Mechanoreceptors found in tendons of muscles:

Golgi tendon

46) About scaleneus medius, all of the following is incorrect except:



اللهم قوة، اللهم طاقة، اللهم صبراً



47) Muscle fibers type for bicycle race :

- A) White
- B) red

Answer: B

48) The following Appears with atopic dermatitis:

asthma

49) staphylococcus that cause SSSS produce :

- A) TSST-1
- B) protein A
- C) exfoliatins

Answer: C

50) rheumatic disorders defined more as:

- A) acute
- B) systematic
- C) pain in joints

Answer: B

51) a patient has developed a superficial dark pigmentation on her right shoulder, which is recurrent after terminating the medication. What is the mos likely diagnosis?

- A) ring worm
- B) candidiasis
- C) mycetoma
- D) tinea versicolor

Answer: D

اللهم قوة، اللهم طاقة، اللهم صبراً





52) the right harelip :

- A. failure of fusion of mandibular processes in the midline.**
- B. failure of fusion between the maxillary process and the median nasal process**
- C. failure of fusion between the maxillary process and the medial nasal process**
- D. failure of fusion between the maxillary process and the lateral nasal process**

Answer: ****

53) All of the following increases body tempreture except :

- A) shivering**
- B) eating**
- C) curling**
- D) sweating**

Answer: D

54) What connects the periosteum with the compact part of bone?

- A) sharpey fibers**
- B) haversian canal**
- C) lacunae**
- D) canaliculi**
- E) volkman canals**

Answer: A

55) all of the following is incorrect except:

- A) oblique hernia enters deep inguinal ring**
- B) Inf.epigastric artery lateral to deep inguinal ring**
- C) superficial inguinal ring in int.oblique muscle**

Answer: A

56) all of the following proteins are affected in muscular myopathies except:



اللهم قوة، اللهم طاقة، اللهم صبراً



57) Ulrich congenital muscular dystrophy caused by mutation in :

- A. COL1A2**
- B. COL3A1**
- C. COL5A1**
- D. COL6A1**

Answer: D

58) which of the following mismatch:

- A. Facioscapulohumeral dystrophy , DUX4 target genes**
- B. Limb-girdle muscular dystrophies, caveolin-3 and dysferlin**
- C. Becker muscular dystrophy , dysferlin and dystrophin**
- D. Myotonic dystrophy , dysferlin and dystrophin**

Answer: D

59) All of the followings about oesophageal opening in diaphragm are true except?

- A) left curs compress the eosphagus**
- B) opposite to T10**
- C) passes also right epigastric artery**

Answer: A

60) If we take the miniral and collagen from bone, what will hapen:

- A. no bone**
- B. thousand parts**
- C. soft brittle bone**
- D. cartilage**
- E. normal but weak bone**

Answer: ****



اللهم قوة، اللهم طاقة، اللهم صبراً



61) one of the following is stimulation for calcitonin:

- A. hypocalcemia
- B. hypophosphatemia

Answer: A

62) patient with romatoid arthritis will suffer from all the following except:

- A. tenderness
- B. swilling
- C. muscle weakness

Answer: C

“اللهم ربنا لا تُعِقنا عن العلم بعائق ولا تمنعنا عنه بمانع ،
لمَّ شتات قلوبنا على علم نافع ننجو به ”

يواسيك دائماً في مضائقك أن الأمر إذا بلغ غاية الضيق زال وانقضى
وأذن له بالفرج
لا يكلف لله نفساً ما لا تستطيعه
ولا يقدر لله لك سعيّاً في شيء إلا و وراء ذلك عاقبة حسنة
وبلاغ طيب

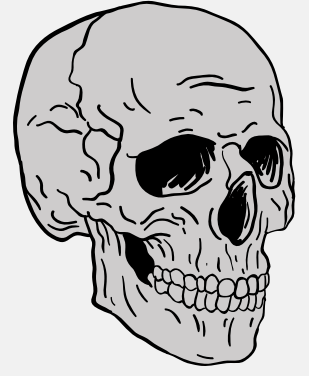
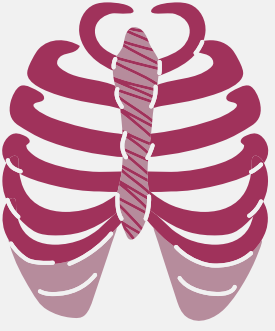
لجنة الطب والجراحة تجتني لكم التفوق والنجاح

معلش
يتبون بالتوكل
يا صديق!
يا جدهان
أنا تعبت

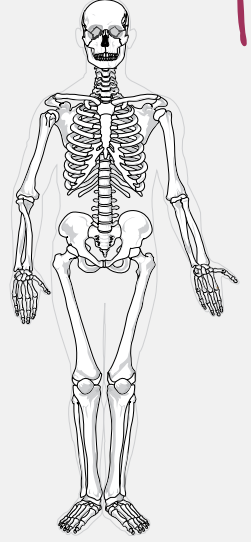


اللهم قوة، اللهم طاقة، اللهم صبراً





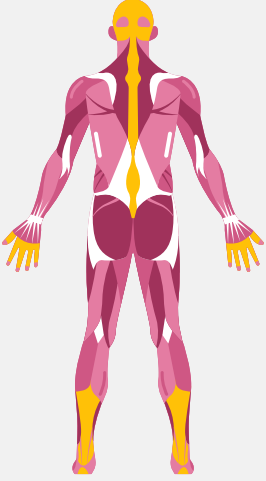
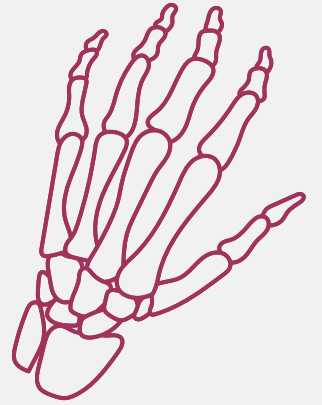
MSS MODULE FINAL EXAM



زوح 2021

Done by:

- Mais Basil
- Emran Younis



الطب والجراحة
لجنة



1. Desmoid fibromatosis percentage of betakatenin mutation is:

- A) 5%
- B) 10%
- C) 20%
- D) 30%
- E) 90%



Answer: E

2. The most common cause of erythema multiforme is:

- A) genetics
- B) HSV
- C) allergy

Answer:

3. 21 years old pregnant woman is suffering from trauma with closed head injury and open fracture of ankle, what position preserves blood pressure during delivering her to emergency room?

- A) trendelenburg
- B) reverse trendelenburg
- C) left lateral side
- D) right lateral side
- E) supine

Answer:C

4. Potts disease is:

- A) skeletal tuberculosis
- B) sclerotic phase of pagets
- C) lytic phase of pagets
- D) pyogenic osteomyelitis

Answer:A

5. A man suffers from urine retention. After some examinations, doctor decides to take a biopsy from his prostate by a procedure requiring about 10 mins. what drug should be used as muscle relaxant:

- A) succinylcholine
- B) pancoronium
- C) mephenesin
- D) mevacorium
- E) tubocurarine



Answer:D

Explanation: this info is taken from record (mevacorium is drug of choice during biopsies which require 5-10 mins)

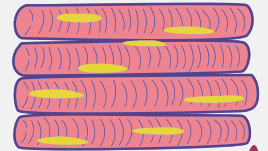
6. all of the following enzymes in muscles are used for energy production except:

- A) carnitine acyl transferase
- B) lactate dehydrogenase
- C) phosphorylase
- D) debranching enzyme
- E) Adenine deaminase

Answer:E

7. the most important feature for facial artery is:

- A) Tortous
- B) from external carotid
- C) supplies the face



Answer:A

8. A drug that decreases chemotaxis of granulocytes as the mechanism of action in treating gout is:

- A) colchicine
- B) Indomethacin
- C) ibuprofen
- D) allopurinol
- E) sulfonmethoxazone

Answer:B

9. A surgery is proceeded in muscular trinagle of neck. The surgeon defines the anterior scalenus muscle, and he notes that he has to be aware of cutting a specific structure passes anterior to it, which is?

- A) external carotid artery
- B) internal jugular vein
- C) phrenic nerve
- D) vagus nerve
- E) subclavian artery

Answer:C

10. The correct among musculoskeletal injuries:

Answer: Car injury is most common type of injuries

11. which statement is correct regarding vertebral column?

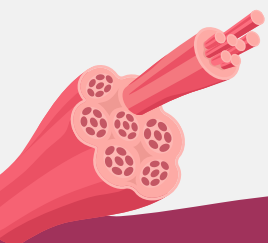
- A) axis is devoid from vertebral body
- B) rotation of head is done by moving atlanto-occipital joint
- C) apical ligament is coming from occipital bone of skull to second vertebra, crossing transverse ligament
- D) tectorial membrane passes posterior to dens of axis

Answer:D

12. Lateral flexion of head is done by:

- A) anterior scalenus
- B) rectus capitis anterior
- C) rectus capitis lateralis
- D) scalinus minimis
- E) rectus capitis posterior

Answer:A





13. All of the following muscles take innervation from C1 except:

- A) rectus capitis lateralis
- B) scalenus posterior
- C) rectus capitis posterior minor
- D) rectus capitis posterior major
- E) longus capitis

Answer: B

14. During a surgery, the hypoglossal nerve is resected after it receives C1 with its course, which muscle is predicted to stop from working?

- A) sternothyroid
- B) sternohyoid
- C) superior belly of omohyoid
- D) inferior belly of omohyoid
- E) thyrohyoid

Answer: E

15. A player falls down on his head damaging posterior triangle of neck. His right sternocleidomastoid now is not functioning well, which of the following is another sign found in this patient?

- A) he rotates his head to right side weakly
- B) he has weak right trapezius
- C) loss of ipsilateral sensation

Answer: B

16. The wrong about antipyretic dose of aspirin is:

- A) reduces body temperature of both feverish and normal people
- B) cause reye syndrome among children
- C) decrease temperature set-point
- D) increase temperature set-point

Answer: A

Explanation: Both A & D are correct. However, the answer for this question is A.

17. The main feature of dystrophinopathies is:

- A) fibrosis
- B) necrosis and regeneration
- C) biopsy shows decreased expression of dystrophin
- D) atrophy of the muscle
- E) mononuclear cell infiltrate is seen in biopsy

Answer: B

18. Which receptor from the following is found in epidermis?

- A) free nerve ending
- B) merckel cells
- C) messienner corpuscles
- D) pacinian corpuscles
- E) hair follicle receptors

Answer: B



Answer:D

19. median nasal process gives all the following except:

- A) premaxilla
- B) primary palate
- C) anterior nasal septum
- D) posterior nasal septum
- E) philtrum

20. Vit-D deficiency causes alot of physiological changes icluding:

Answer: hyperparathyroidism

21. Which of the following is the line bisects the sarcomeres

- A- I band
- B- A band
- C- Z line
- D- M line
- E- H zone

Answer:C

22. Which of the following muscle for expression of doubt

- A- zygomaticus major
- B- mentalis
- C- depressor labii inferior
- D- depressor anguli oris
- E- risorius

Answer:B

23. Ibuprofen is administered to patient of osteoarthritis for inhibition of:

- a) PG +bradykinin
- b) Pg+ L1
- c) Thromboxane+ PG
- d) PG + prostacyclin
- e) Thromboxane + bradykinin

Answer:B

24. One of the following is true about external oblique

- A-its covered the anterior of the rectus abdominus
- B- its directed upward,medially forward
- C- its origin from all rib

Answer:A

25. All the following are treatment for acute eczema exept

- A- phototherapy
- B- oral steroids
- C- lukewarm
- D- surgical excision of the red patch

Answer:D

26. The children born with which type of skeleton

- A- compact
- B- hyaline
- C- spongy

Answer:B

27. Treatment for succinylcholine apnea during phase 2 toxicity is

- A- neostigmine followed by atropin
- B- atropin followed by neostigmine
- C- fresh frozen plasma

Answer:B:

28. acidosis .. Ca abs, alkalinity ... ca abs, level of ...ca is changed.

- a) decrease , increase , bound
- b) increase , decrease , bound
- c) increase , increase, complex
- D- decrease, increase, complex
- E- increase, decrease, complex

Answer:A

Explanation: bound calcium is calcium attached to blood proteins, they are altered in relation to calcium level in blood. While the complexed form of Ca is when Ca attached to other compounds such as calcium gluconate. Question text is not accurate as in the exam.

29. One of the following is posterior to inguinal canal

- A- conjoint tendon
- B- cremasteric muscle
- C- pyramidal muscle

Answer:A:

30. One of the following is true about 1,25 dihydroxyvitamin D3

- A- it's a lipophilic work as vitamin
- B- it has extracellular receptor
- C- it's activated in liver
- D- its action opposite PTH
- E- decreases the PTH transcription

Answer:E

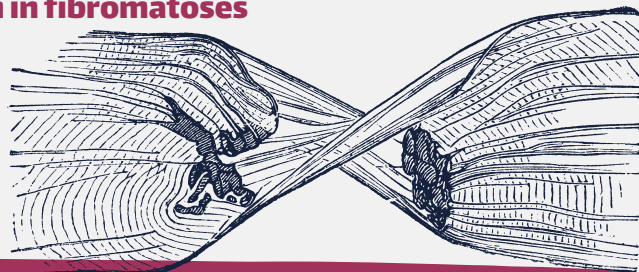
31. All the following are complications of carbuncle except:

- A- pneumonia
- B- spinal abscess
- C- brain abscess
- D- septicemia
- E- cellulitis

Answer:A

32. The percentage of B- catenin mutation in fibromatosis

- A- 20%
- B- 90%
- C- 10%
- D- 30%
- E- 5%



Answer:D

33. Why connective tissues are more elastic?

- A) elastic denaturation is reversible
- B) elastic fibers do not have hydroxylysine
- C) lysyl oxidase is not involved in elastic formation

Answer:

34. A patient complaining from right knee pain, and then experiencing additive ankle pain.

What is the possible diagnosis?

- A) SLE
- B) ankylosing spondilitis
- C) RA
- D) septic arthritis

Answer:B

Explanation: SLE is systemic disease, RA is symmetrical and septic arthritis is monoarthritis. Therefore the answer is ankylosing spondilitis

35. A patient 51 years old of RA is experiencing joint erosin. Which drug should be prescribed?

- A) methotrexate
- B) hydroxychloroquine
- C) sulfasalzine
- D) itanercept
- E) infimumab

Answer:A

36. The force of the muscle is almost depending on:

- A) length
- B) speed of contraction
- C) fiber type
- D) level of conditioning
- E) cross-bridges

Answer:C

37. What is indirect job of PTH among these?

- a. It lowers the circulating calcium and phosphate levels
- B- It inhibits bone resorption
- C- it's indirectly causing phosphoate absorption from gi with ca
- d. It decreases osteoclast/osteoblast activity ratio e. It decreases renal tubular reabsorption of calcium

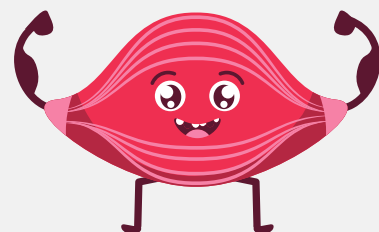
Answer:C

38. One of the following false about aspirin

- A- its affect both normal and high temperature

39. All the following are true about the scalp except:

- a) cut in occipitofrontalis less bleeding
- b) aponurosis of occipitofrontalis is a separate third layer
- c) superficial temporal artery is the smallest terminal branch of EC
- d) loose areolar is the dangerous layer
- e) the right occipitofrontalis is stronger than the occiptal one



Answer:B



40. Which of the following is caused by mutation in retinoblastoma gene :

- a) Osteosarcoma
- b) Chondrosarcoma
- c) Osteochondroma

Answer:A

41. All the following are true about sella turcica except

- A- posteriorly sella dorsum
- B- above the pituitary gland
- C- below sphenoidal air sinus
- D- its in the sphenoid bone
- E- anteriorly inferior clinoid process

Answer:E

42. Which has more myofibrils?

- A- red fiber
- B- rapid fiber

Answer:A

44. The receptor that is found in epidermis:

- 1-free ending nerve
- 2-hair follicles

Answer:A

45. All the following are true about vesicular zoster except:

- A- its cause is bilateral

46. Muscle that does lateral flexion of the neck

- A- rectus capitis anterior
- B- rectus capitis lateralis
- C- scalenus posterior
- D- longus capitis

Answer:B

47. Female has a swelling, tenderness and pain, she ate pork 3 weeks ago, what is the type

- A- trichinella spiralis

48. Osteomyelitis in children occurs in

- A- diaphysis of long bone
- B- metaphysis of long bone
- C- vertebrae

Answer:B

49. Streptokinase

- A- dissolved the clot
- B- form the clot
- B- lyse blood cell

Answer::

50. The type of stage that transmit by contact

- A- amastagoit
- B- premastgoit

Answer:A

51. A women with a thick and itchy whitish discharge , one is wrong regarding the causative organism?

- a) it reproduces by budding
- b) Has true and branching septated hyphae Gram stain positive
- c) Is a yeast
- d) Chlamydo spores may be seen on corn meal agar

Answer:B

52. The H zone

- a) Is divided by M line
- b) Contains only actin

Answer:A

53. Rigor mortis is caused by?

- a) Decrease ADP
- b) Depletion of ATP
- c) Increase lactic acid

Answer:B

54. decrease heat loss in cold exposure

- a) V.C of skin blood vessels , counter current exchanger occurs in femoral artery and deep vein
- b) V.C of skin blood vessels occurs

Answer:A

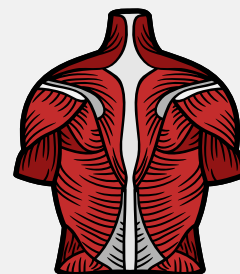
55. Smooth muscle contractility is characterised by

- a) Low O₂ consumption
- b) Slow cycling of Cross Bridges, low both energy & amp ; O₂ consumption
- c) Low energy consumption

Answer:B

56. Smooth muscle are characterized by all the following EXCEPT? Select one:

- A. Contains Calmodulin instead of troponin
- B. Its membrane potential is unstable
- C. Have a resting membrane potential is about -50mV
- D. They are relaxed by acids and excess calcium
- E. Its contraction increased with warming



Answer:E

57. Wrong about pterion:

a) The center is related internally to posterior branch of the middle meningeal artery

58. Person of 65 years old who has arthritis from 6 months ago ... He has ulcer ... the best drug is :

- a) piroxicam
- b) celecoxib
- c) indomethacin
- d) ibuprofen

Answer:D

Explanation : it is not recommended to give old patients celcoxib, so it is better to use ibuprofen for less side effects

59. The most cause of depression of the mandible

- a) lateral pterygoid
- b) digastric
- c) geniohyoid
- d) masseter
- e) gravity

Answer:E

60. All the following are deep relation of lateral pterygoid muscle except

- A- medial pterygoid muscle
- B- otic ganglia
- C- lingual artery
- D- middle meningeal artery
- E- chorda tympani

Answer:C

61. One of the following is the origin of quadratus lumborum:

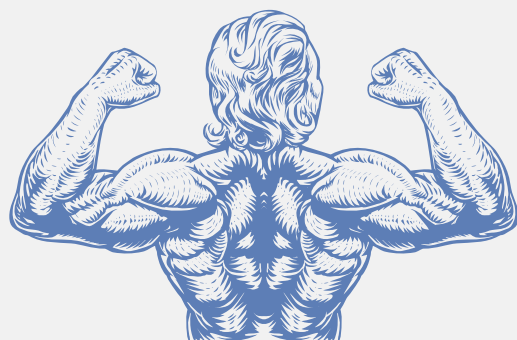
- A- 4 lumbar vertebrae
- B- 5 lumbar vertebrae
- C- inner surface of iliac crest
- D- outer surface of iliac crest
- E- last rib

Answer::

62. woman with gout took a drug, but it did not give any effect. She took another drug (pegloticase). What does this drug do?

- A- excrete urase
- B- inhibit production
- C- break down urase
- D- inhibitor of xanthin

Answer:D



64. Woman with Romatoid arthritis in wrist and bone erosion What the treatment you give

- A- methotrexate**
- B- hydroxychloroquine**
- C- infliximab**

Answer:A

65. All the following contraindications with topical steroids except

- A- fungal infection**
- B- pruritic**
- C- ulcer**
- D- acne vulgares**
- E- scabes**

Answer:B

66. Civate body

- A- necrotic basel cell**
- necrotic detach of stratum corneum**
- epidermal acantholysis**

Answer:A

67. Morphological features in paget disease

- A- fibrosis**
- B- atrophy of muscle fiber**
- C- necrosis of muscle fiber**

Answer:A

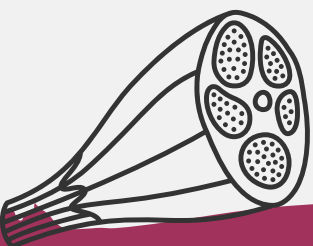
68. I examined the carotid triangle and found a sclen anterior in front of me, and I have to pay attention because something important passes in front of this muscle... what is it??

- a) commen car artery**
- b) Vagus N**
- c) Phrenic N**
- d) IJV**

Answer:C

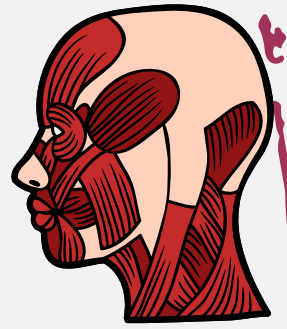
69. How does the amastigote transmission??

- a) Direct contact**



71. A man's neck was hit by a football from the right post triangle, so it hit the right sterno clmastoid. What muscle will be affected and is it fed from the same nerve??

a) Trapezius muscle



Answer:A

72. The incorrect about shingle :

a) The vesicular eruption is bilateral, involving one to three dermatomes

b) Caused by reactivation of VZV

c) Pain in a sensory nerve distribution may sign the onset of the eruption

73. A central fissure or cleft divides the hand or foot into 2 part??

a) Lobster hand

74. Which on of the following measure considered as a primary prevention for Musculo-skeletal injury??

a) Trigger lock on guns

75. All muscle innervated from C1 except?

a) Sclen post

76. Nail changes due to :

a) psoriasis

b) rheumatoid arthritis

Answer:A

77.The most characteristic feature of facial artery

a) Tortous

78. For head and neck connection :

a) Head rotation is caused by the AO joint

b) Apical ligament is two branches in middle of odontoid process

c) odontoid behind tectorial membrane

d) odontoid anterior to transvers lig

Answer:D

79. All are Tyrosinase inhibitors except :

a) Arbutin

b) Kojic acid

c) Vitamin E

d) vitamin A

e) Hydroquinone

Answer:D

اعزم وكذ فان مضيت فلا تقف، واصبر وثابر فالنجاح محقق
ليس الموفق من توأتيه المنى، لكن من رزق الثبات موفق

خليل مطران



mss - midterm

Wateen 202

**Collected by:
Shereen Ahmad**



الطبيب الجراحة
لجنة
الطبيب الجراحة

1) Melanin present in all of the following except:

A- Spinal cord

B- Skin

C- Eye

D- Brain stem

Answer :D

2) Thermoregulatory center present in :

A- Hypothalamus

B- Thalamus

Answer :A

3) All of the following is hyperuric except:

colachine

4) Troponin C bind to:

A- Ca

B- Na

C- none

Answer : A

5) Thin dark line across the center of the H zone of a striated muscle fiber:

A- M line

B- Z line

C- H band

D- I band

Answer : A

6) All of the following drugs used for treatment of hyperhidrosis except :

Sympathomimetics

7) All of the following is contraindications topical steroid except:

Eczema

8) Heat Stroke include all the following except:

Cold skin

9) Control center of increase the temperature is:

A- Hypothalamus

B- thalamus

C- none

Answer : A

10) Release of calcitonin associated with:

A- hypokalemia

B- hypercalcemia

Answer : B

11) Which of the following correct about cavity of shoulder joint:

Communicate with subscapular bursae

12) Syndactyly :

Abnormal fusion of fingers

13)Most contagious disease:

A- Measles

B- rubella

C none

Answer : A

14)Pigs are considered hosts:

Tracheal spirals

15)Red muscle it's about it, except:

Adapted rapid short action

16)All of the following are preventive measures except:

Seat belt

17) All of the following are related Isotonic contraction except:

SE stretched

18)correct about Civatte:

lichen planus

19) Which of the following happened with epiphysis :

giant cell tumor

22) Which of the following did NOT happen with myasthenia gravis :

symptoms improvement with repeated stimulation

23) Lichen planus:

A- CD8

B- CD4

C- both

D- non of the following

Answer : A

24) One of the following is incorrect about cytokines modulators:

Infliximab can be used alone

25) X=18:

A- liposarcoma

B- Synovial sarcoma

C- pleomorphic sarcoma

D- non of the following

Answer : B

26) *ligament which fix dens of axis*

A- lateral ligament

B- medial ligament

C- cruciate

Answer : C

27) *medicine that relieves the pain of osteoporosis and at the same time the patient has heart disease?*

What medicine should not be taken?

celecoxib

أعيدك بالله من أن تعناد على فراغ يقطف منك زهرة شبابك، وأن
تألف النعم فلا تذكر الله إلا عند حدوث النقم، وأن تركع عدة مرّات في
اليوم ولا يستقيم فيك إلا ظهرك، وأن تكون غير مُبالياً في زمن يُهتك
فيه أسوار أمّتك، وأن يمتلئ قلبك بالكتمان فتطرق غير باب

الرحمن. 
- الفياض.

لا تنسوننا من صالح دعائكم

مع تمنياتنا بالتوفيق والنجاح

#لجنة_الطب_والجراحة

MSS- final

Wateen 2020

Collected by
Sheren Ahmad



الطب والجراحة
لجنة

1)Sterile and clean wounds are:

Surgical wound

2)collagen and elastin differ in :

have similar amino acid sequence.

3)From Contents of carpal tunnel :

A. radial nerve

B. Median nerve

C. ulnar nerve

Answer : B

4)Wrong about hair :

A. hard keratin

b. Soft keratin

c. from dead keratinised cells

D. all of the following

Answer : B

5)all true about MTX except:

Given in pregnancy

acrocephaly

6)cause of Acromegaly:

- A. Early closure of sagittal suture**
- B. Early closure of coronal suture**
- C. Early closure of lamboid suture**

Answer : B

7)Amelia:

- A. absent lower limb**
- b. Absent upper limb**
- C. fussion fingers**

Answer : A

8)True about sternocleidomastoid :

One muscle move .. ipsilateral side

9)Not a content of digastric triangle:

Thyroid gland

10) Innervation of posterior belly of the digastric :

- A. Facial nerve**
- b. Inguinal nerve**

Answer : A

خطأ السؤال

11) **Posterior relation to splaneus anterior:**

Transverse cervical vessels Spinal accessory nerve

12) **Knee joint true:**

Tibial collateral ligament blends within the capsule and related to medial meniscu

13) **One is within the knee capsule :**

Tendon of popletius

14) **All of the structures related to the temporal bone except :**

- A. Tympanic bone
- B. styloid process
- c. Coronoid process
- D. zygomatic process

Answer : C

15) **Ankle joint movements:**

Dorsiflexion /plantarflexion

16) **Medial rotation for shoulder joint :**

Teres major

17) All of the following are contents of digastric except:

- A. Thyroid gland
- b. lingual nerve
- c. facial artery

Answer : A

18) False about iliofemoral joint:

- A. Strongest ligament
- B. Prevent over extension and medial rotation

Answer : B

19) What the most characteristic about stratum granulosum:

Keratohyaline granules

20) Rotator cuff muscle:

- A. Deltoid
- B. Infraspinatus
- C. trapezios

Answer : B

21) All of these characteristics similar in both elastin and collagen fibers except :

Basic amino acid

pemphigus foliaceus

22) False about pemphigus fasciatus:

Mucus

23) Elastic :

Unlike collagen , denaturation of it is reverse

24) All of these viruses infection cause vesicles except :

A. HSV-1

B. HSV-2

C. Rubella

D. Herpes zoster

Answer : C

25) 35 years old woman with multiple fractures and administered to the ICU, the doctors went and gave her a muscle relaxer to facilitate the tracheal intubation, she suffered from cardiac arrest and the doctors made cardiac resuscitation and had been done successfully. Which drug caused this arrest :

Succinylcholine

26) Acrocephaly?

high skull due to early closure of the coronal suture

27) Large pimple has been identified for 5-7 days, painful, multiple discharging sinus, healed with a scar:

Carbuncle

28) HSV type 2 is characterized by :

Ulcers on genital organs

29) Which tendon attaches to mandibular lingula :

Sphenomandibular

30) Function of atlantooccipital ?

Flexion and extension

31) One of the following is true regarding wrist joint :

Flexion and extension and pronation and supination

32) All of the following are harmful effects of sun except :

Kill germs

33) Which of the following drug isn't used for the treatment of acne :

Neomycin

34) Insufficiency of a vital element:

Drowning

35) Includes injuries due to legal intervention:

Intentional injuries

36) Body response to cold exposure :

vasoconstriction

37) Boy has been diagnosed with viral infection in the stomach, the doctor prescribed anti-inflammatory and anti-pyretic drug

The boy developed serious symptoms like brain hydrocephalus and liver disease and heart disease plus kidney disease, the boy died 5 days later.

Which drug was given to the boy:

Aspirin

38) 4 year old boy suffering for muscle weakness and his brother was wheelchair at the age of 12

Which of the following is unrelated to the disease :

Absence of dystrophin protein

39) 65yrs old alcoholic woman was administered to the ER by her husband with hearing loss and bradycardia and hyperglycemia and hypertension with creatinine elevation and hypercalcemia, her husband said she took a drug for an attempting to a suicide.

Which drug has been taken :

Aspirin

40) 1st part of maxillary arterylateral pterigoid muscle:

- A. Below
- B. Above
- C. Between two part
- D. posterior
- E. Superficial

Answer:D

41) Deficiency in one of these enzyme causes myopathy... not related to ATP and inheritance :

- A. PFK
- B. Phosphorylase
- C. Carnitine palmitoyl transferase
- D. CPT II

Answer: D

42) All the following drugs using for acne EXCEPT :

- A. Keratolytic
- B. benzoyl peroxide
- C. isotretinoin

D. clindamycin

E. neomycin

Answer: E

43) All of the following Causes are of Localized Hyperhidrosis EXCEPT :

A. Idiopathic / Primary

B. Social anxiety disorder

C. Stump hyperhidrosis after amputation

D. Gustatory sweating

E. evaporation

Answer: E

44) All following about methotrexate MTX are true EXCEPT ? Select one :

A. Can be given to pregnant women

B. used alone or in combination therapy

C. inhibits purine synthesis

D. Response to MTX occurs sooner than with other agents

E. Doses in rheumatoid arthritis is low

Answer: A

أَعْلَمُ أَنْ مَا تَمَرُّ بِهِ مَوْلِمٍ.. يَسْرِقُ مِنْكَ النَّوْمَ، وَيَصِيبُكَ بِالْأَرْقِ
وَالضَّغْطِ، وَقَدْ يُبْكِيكَ.. لَكِنَّ صَبْرَكَ وَيَقِينِكَ بِفَرَجِ اللَّهِ وَعَدْلِهِ
سَيَجْلِبُ لَكَ رِزْقًا عَظِيمًا.. هَذَا التَّعَبُ سَيَنْتَهِي، وَالْمُرُّ مِنَ الْحَالِ
حَتْمًا سَيُمُرُ، وَسَيُزْهِرُ صَبْرُكَ نَصْرًا.. فَإِنَّ مَعَ الْعَسْرِ يَسْرًا، إِنَّ

مع العسرِ يسراً.. واللهُ معك.. أقرب إليك من نفسك.. فلا
تبتئس.. أنت بربك أقوى. □
- جهاد حجاب.

لا تنسونا من صالح دعائكم
مع أمنياتنا بالتوفيق والنجاح
#لجنة_الطب_والجراحة

الطب والجراحة
لجنة