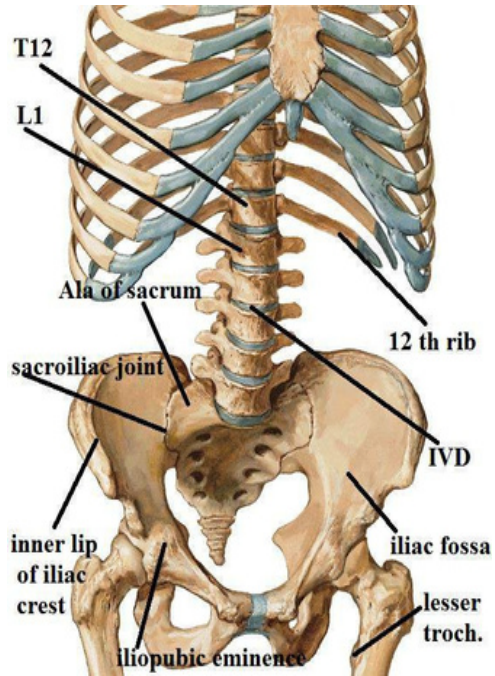
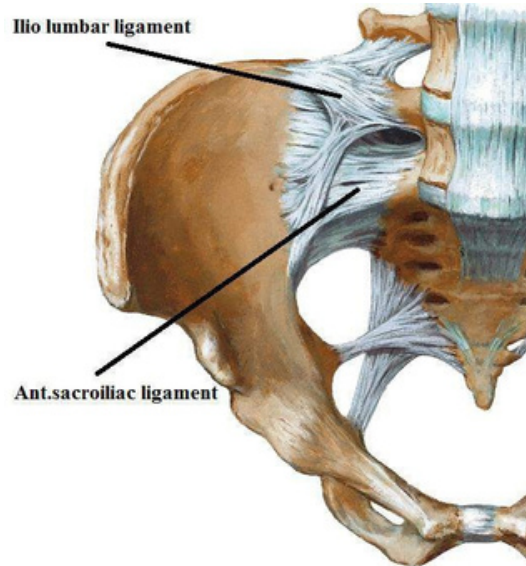


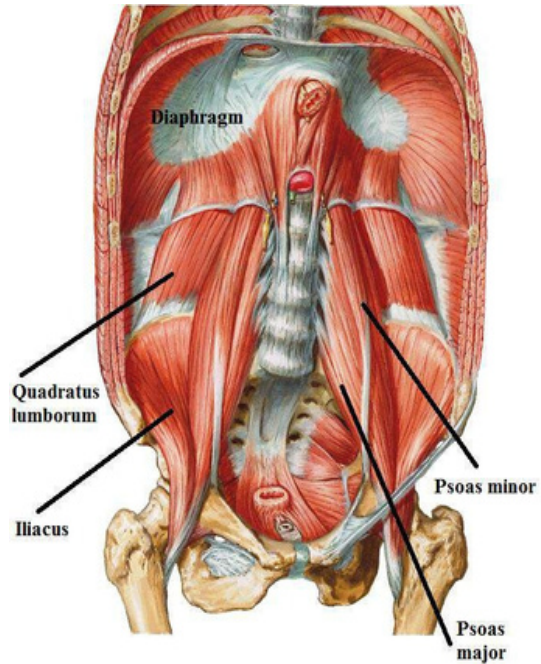
skeleton



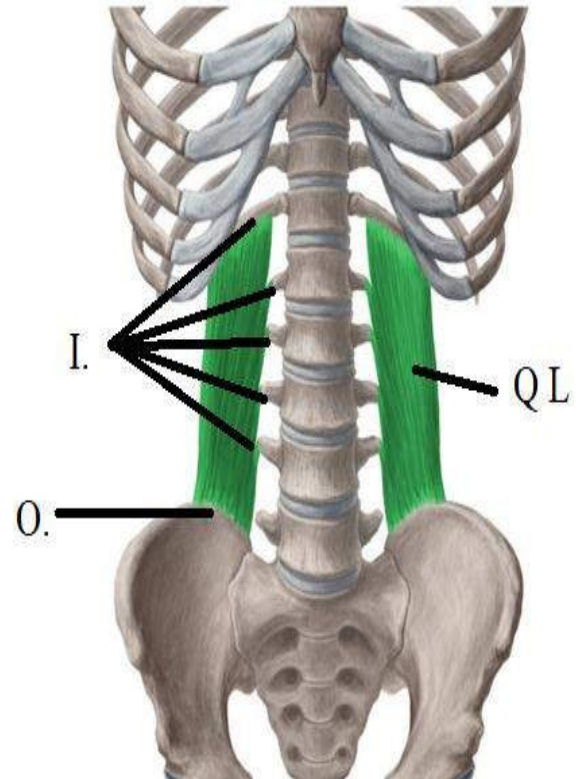
skeleton



post. abd. wall muscles

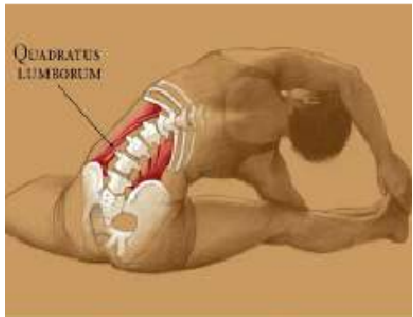
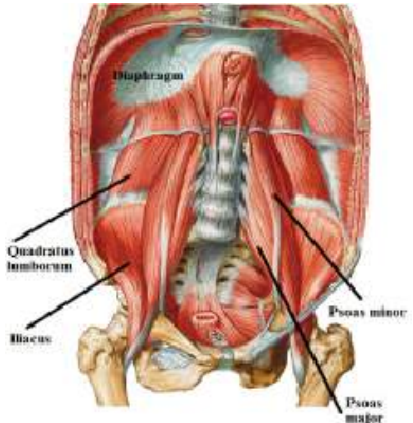


T-QUADRATUS LUMBORUM



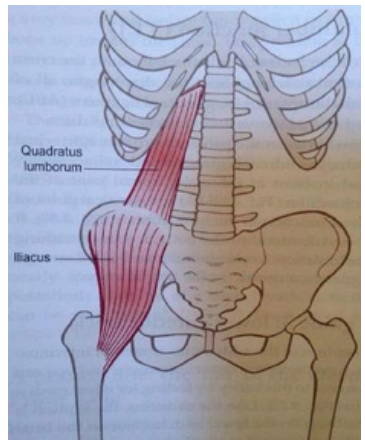
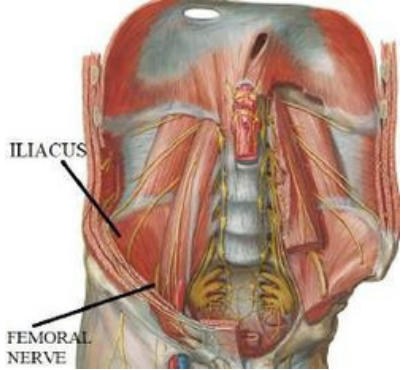
1-QUADRATUS LUMBORUM

A.:-



ILIACUS

O.:-

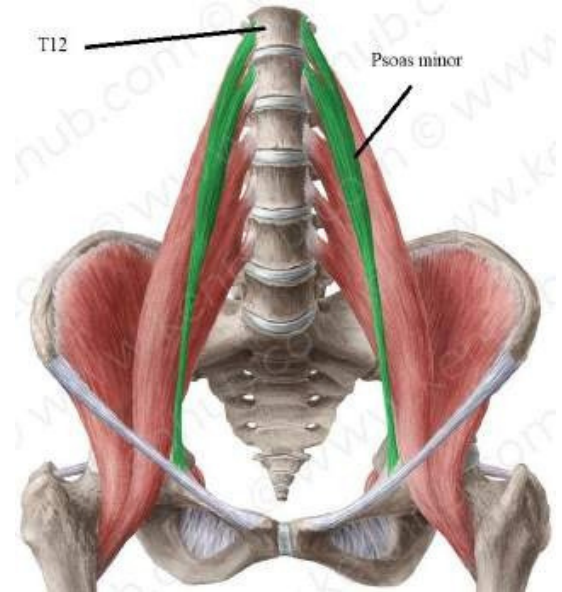


PSOAS MAJOR



PSOAS MINOR (may be absent)

0.:-

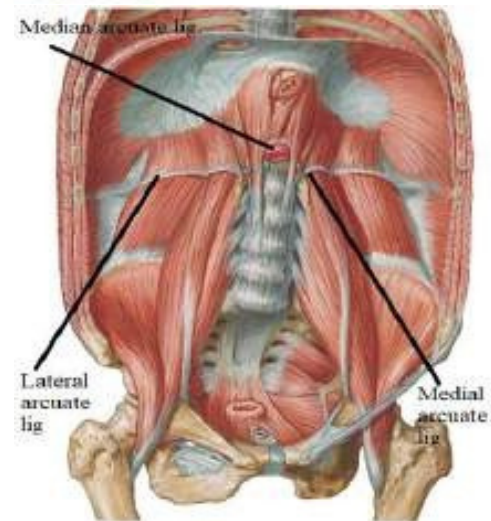
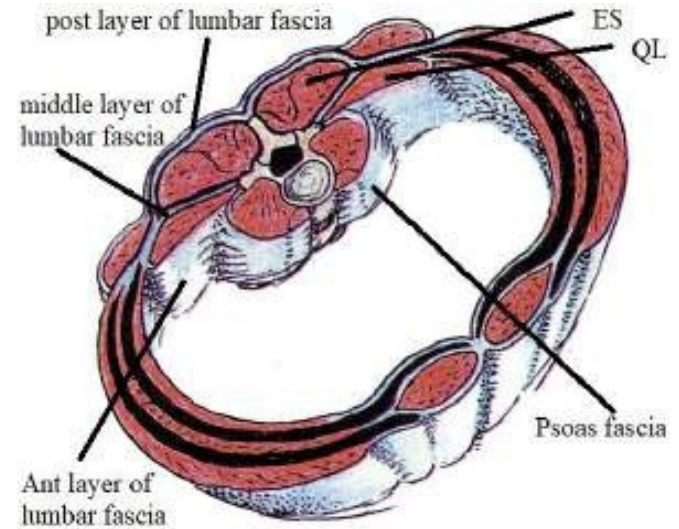


fascia of post. abd. wall

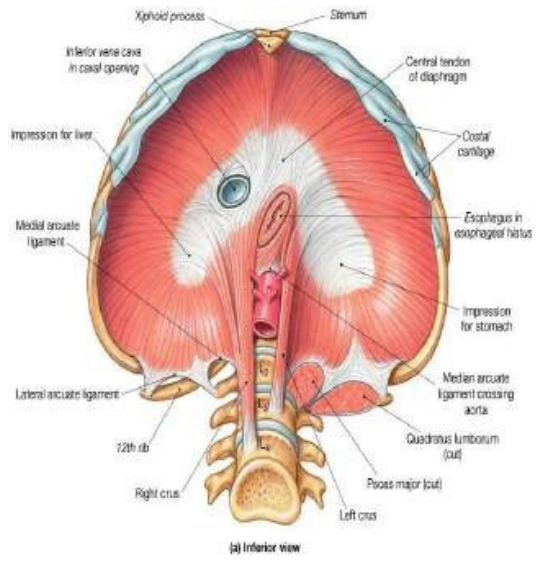
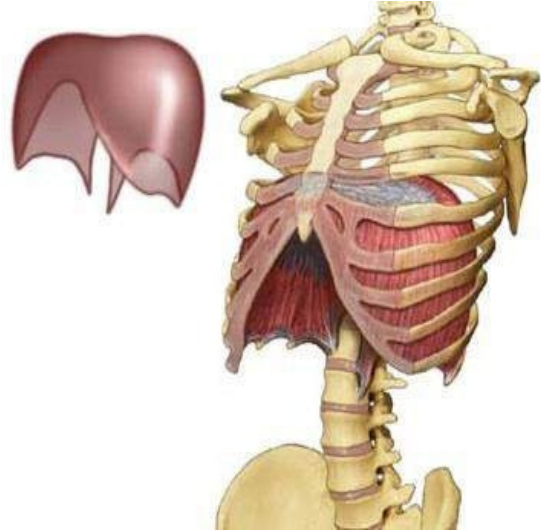
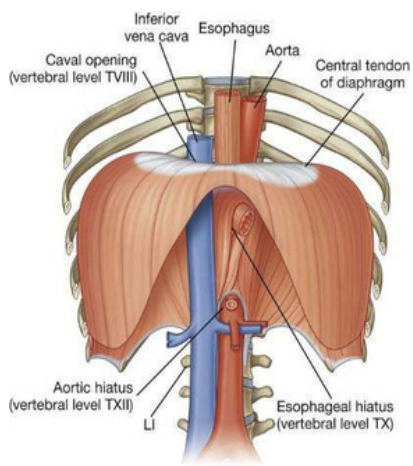
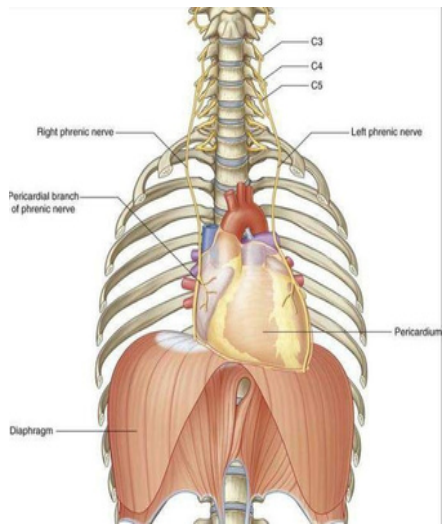
1-iliac fascia:

2-psoas fascia:

3-lumbar (thoracolumbar) fascia:-



diaphragm



(a) Inferior view