

وسهلا



أهلا

يُمنع أخذ السلايدات بدون
إذن المحرر واي اجراء
يخالف ذلك يقع تحت طائلة
المسؤولية القانونية
جميع المعلومات للاستخدام
التعليمي فقط

الأستاذ الدكتور يوسف حسين

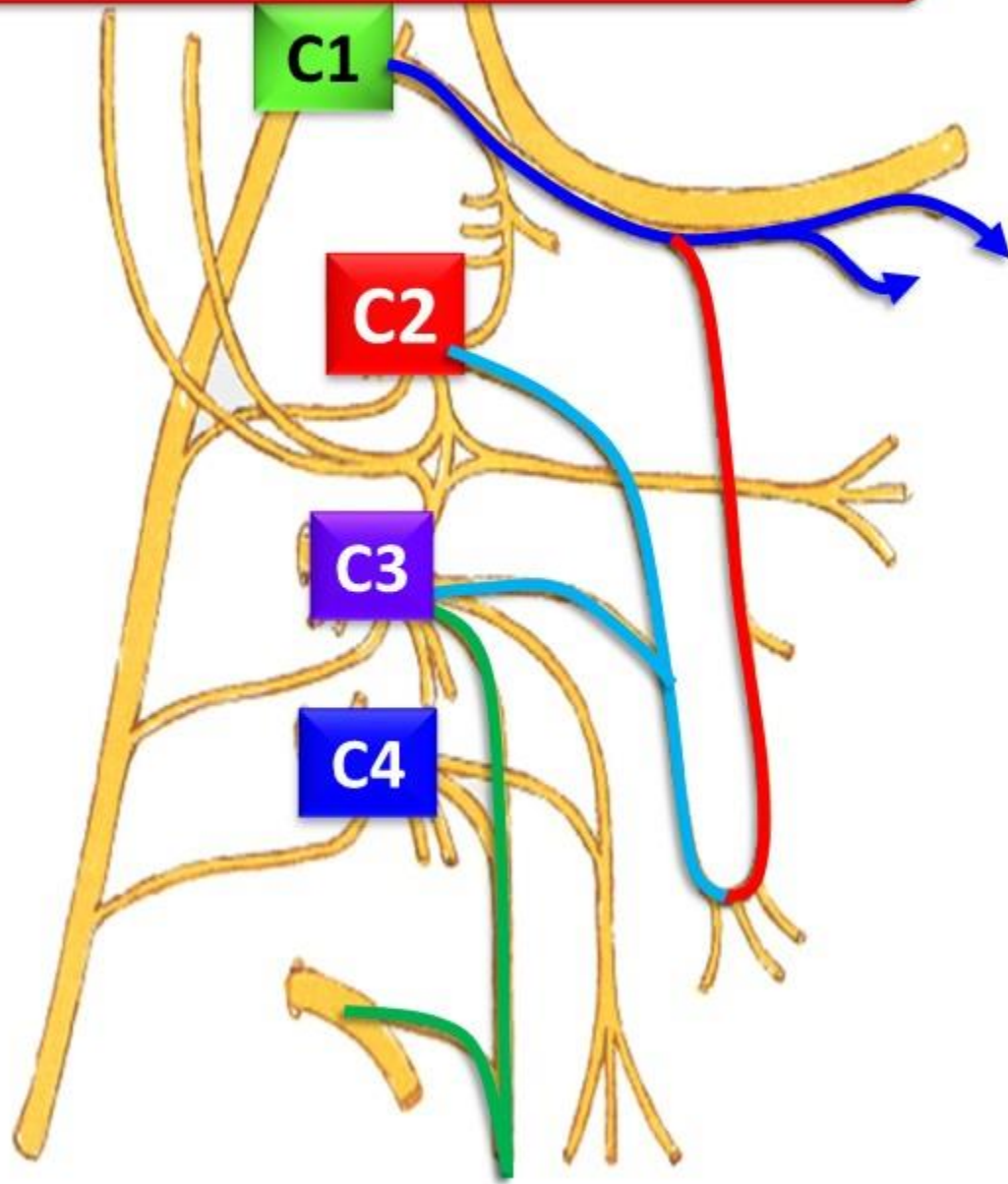
كلية الطب - جامعة مؤتة - الأردن

دكتورة من جامعة كولونيا المانيا

Prof. Dr. Youssef Hussein Anatomy - YouTube

الواتس (أي استفسار)
00201224904207

Cervical plexus



- It is formed by the ventral rami of upper four cervical nerves (C1 to C4)
- It is formed in the posterior triangle

No cutaneous branch to C1

Cutaneous branches

Sternomastoid

Lesser occipital nerve (C2) skin behind the auricle and auricle

Middle Supraclavicular nerve

Lateral Supraclavicular nerve

Great auricular nerve (C2-C3)

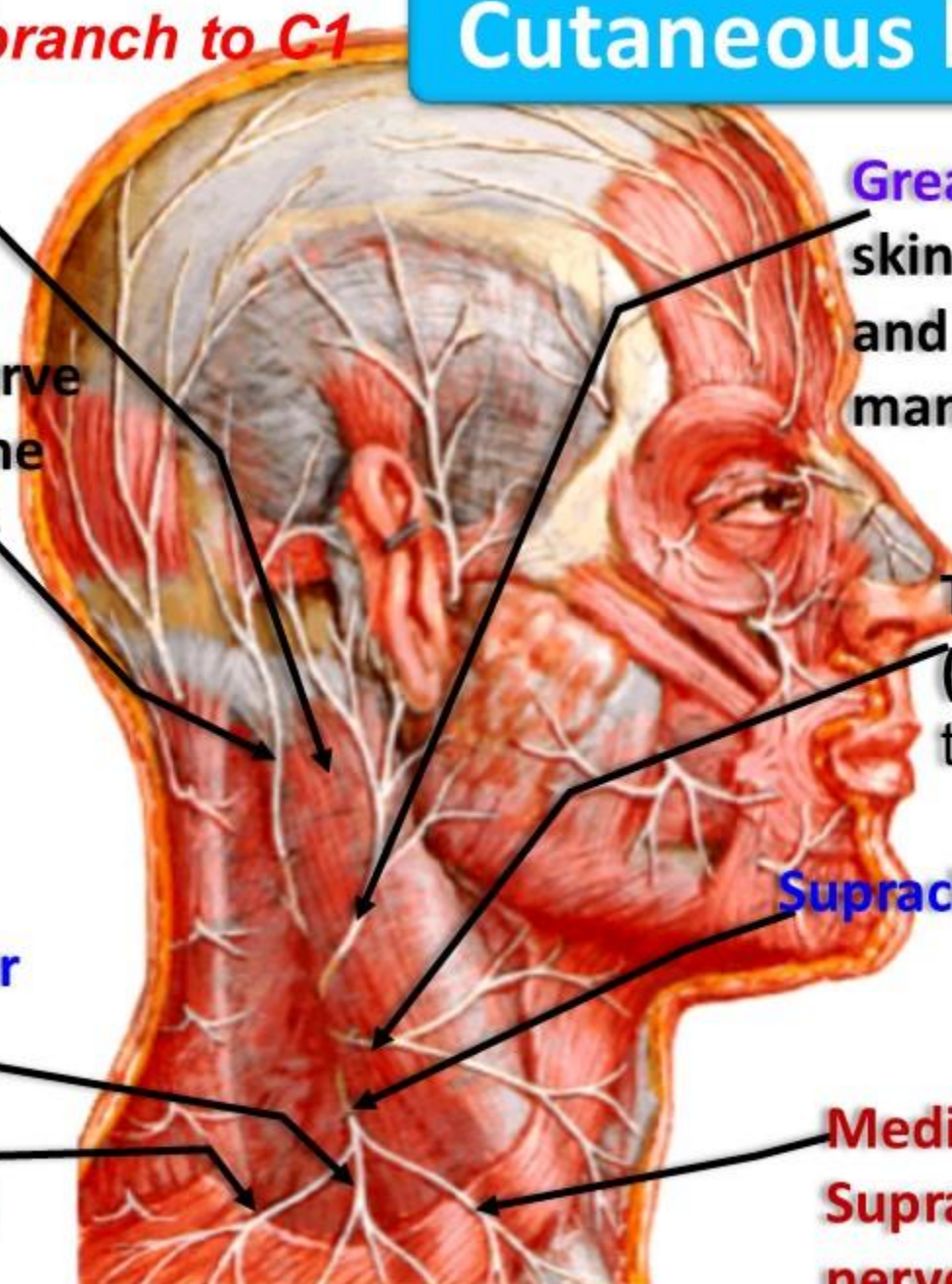
skin behind the auricle, auricle and skin over the angle of the mandible

Transverse cervical nerve (C2-C3) skin of anterior triangle of neck

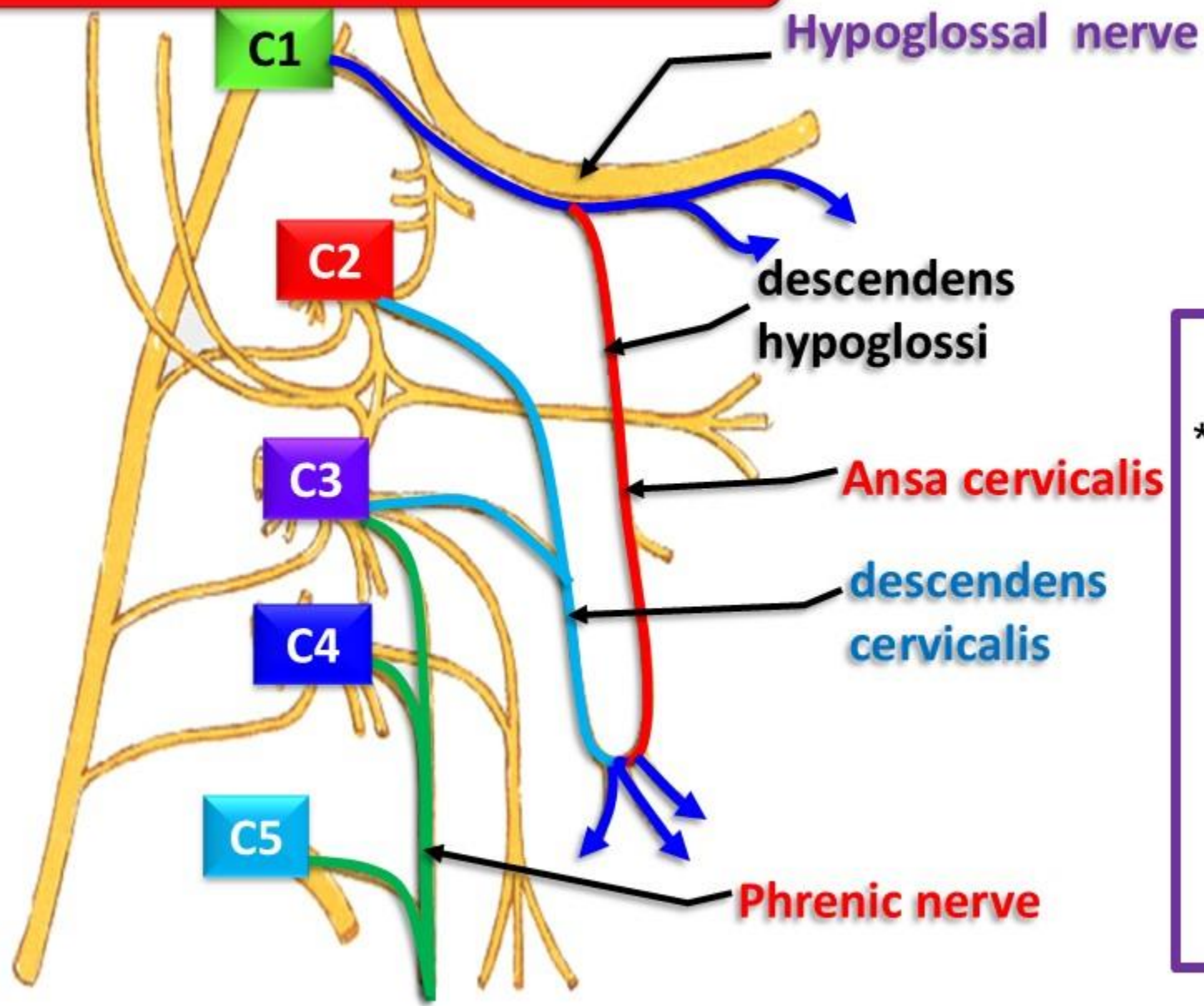
Supraclavicular nerves (C3-C4)

- 1) Skin over the upper 1/2 of the deltoid muscle.
- 2) Skin of the pectoral region above the level of sternal angle.

Medial Supraclavicular nerve



Muscular branches



Motor to levator scapulae
(C3, 4).
- **Proprioceptive branches**
to sternomastoid and
trapezius (C3, 4).

• **Ansa Cervicalis**

* **Branches :**

1- Branches to sternohyoid,
sternothyroid and omohyoid
muscles (C1, 2 & 3).

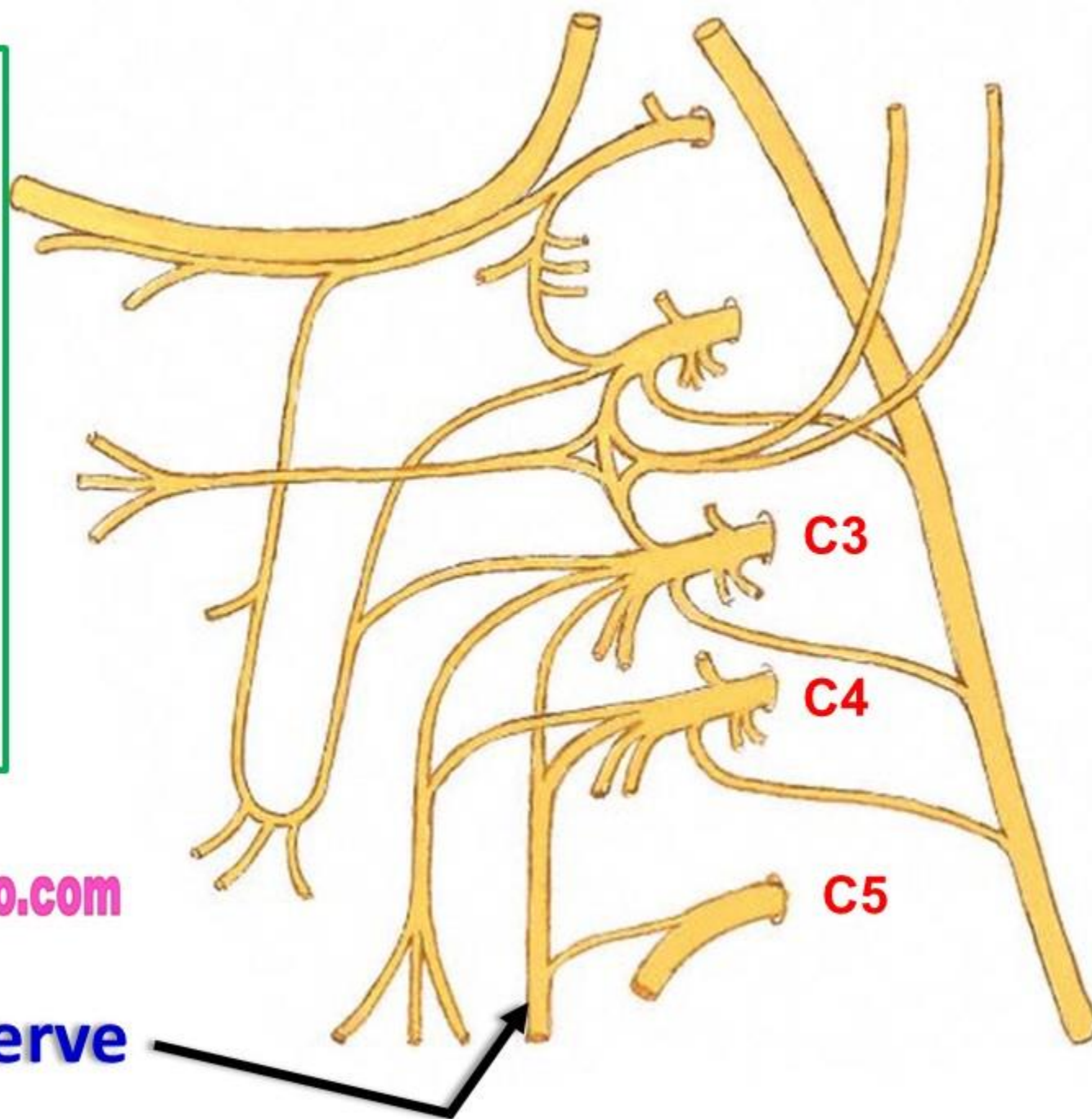
2- Branches to geniohyoid and
thyrohyoid (C1) through
hypoglossal nerve.

dr_youssefhussein@yahoo.com



dr_youssefhussein@yahoo.com

- **Phrenic nerve** is a mixed nerve.
- **Roots**, they arise from the ventral rami of C3, C4 and C5 (**mainly from C 4**).
- **C3 and C4** from **cervical plexus**
- **C5** from **brachial plexus**



dr_youssefhussein@yahoo.com

Phrenic nerve

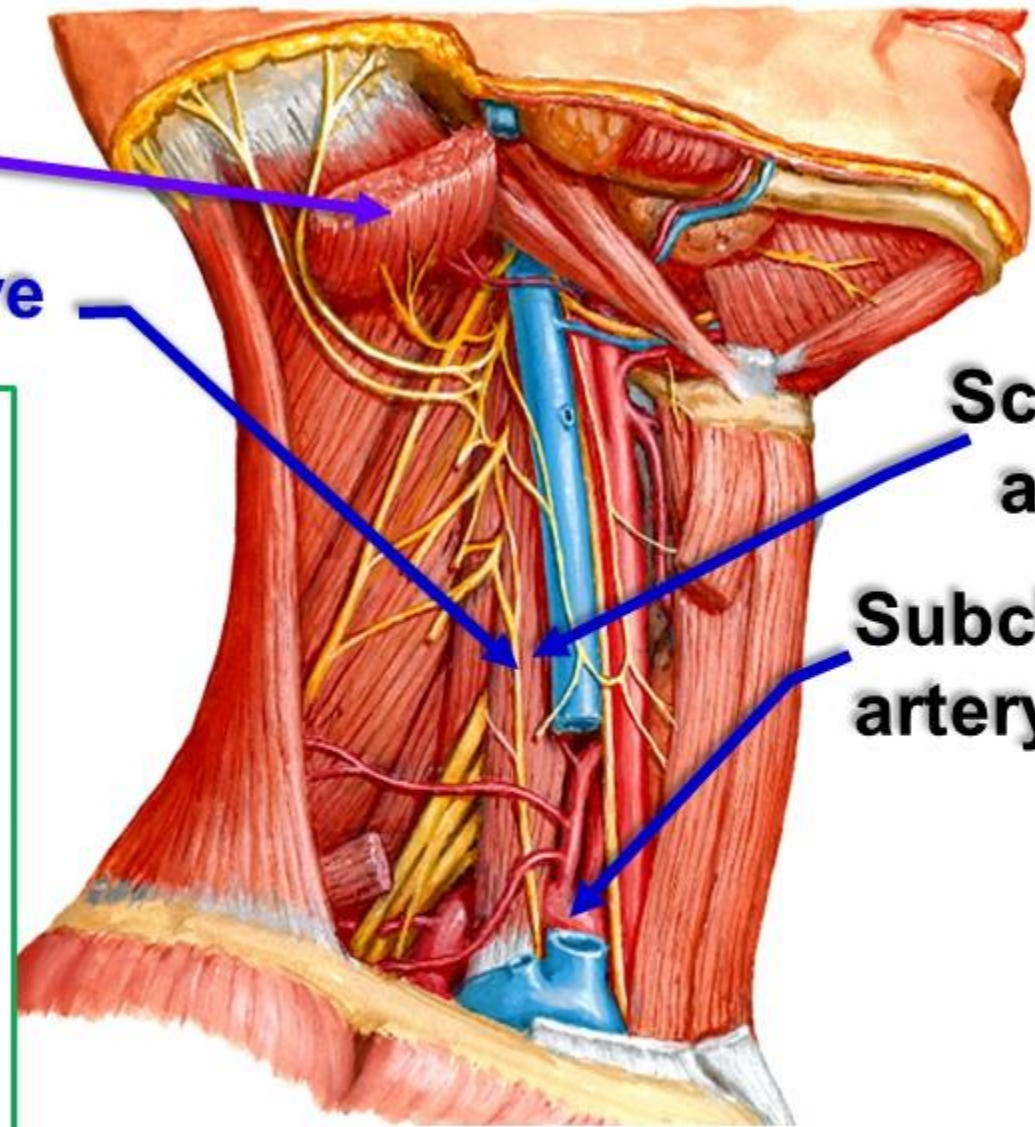
Sternomastoid

Phrenic nerve

Scalenus anterior

Subclavian artery

- **Course In the neck,**
 - It descends **in front of** scalenus anterior between muscle and its fascia.
 - **Behind** carotid sheath and sternomastoid muscle.
 - Then **cross** the first part of subclavian artery.
 - It **enters the thorax by crossing** the internal thoracic artery.



on the right side of

1. Right
brachiocephalic vein

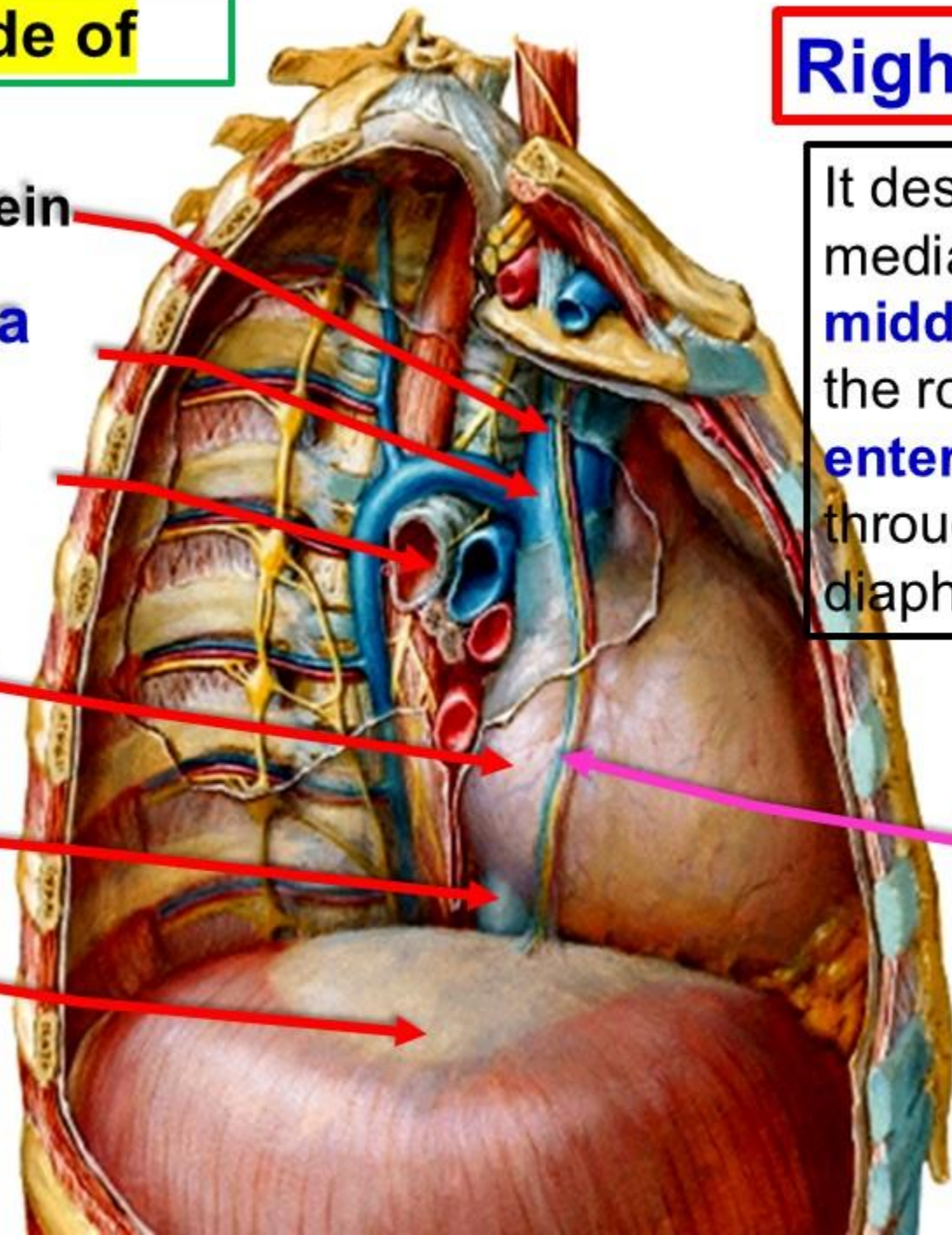
2. Superior vena
cava

Infront Root of
right lung

3. Pericardium

4. Inferior vena
cava

Diaphragm



Right phrenic nerve

It descends in the **superior** mediastinum then in the **middle** mediastinum in front the root of the right lung **enters the abdominal cavity** through the I.V.C. opening of diaphragm

Right Phrenic nerve
with
pericardiophrenic
vessel

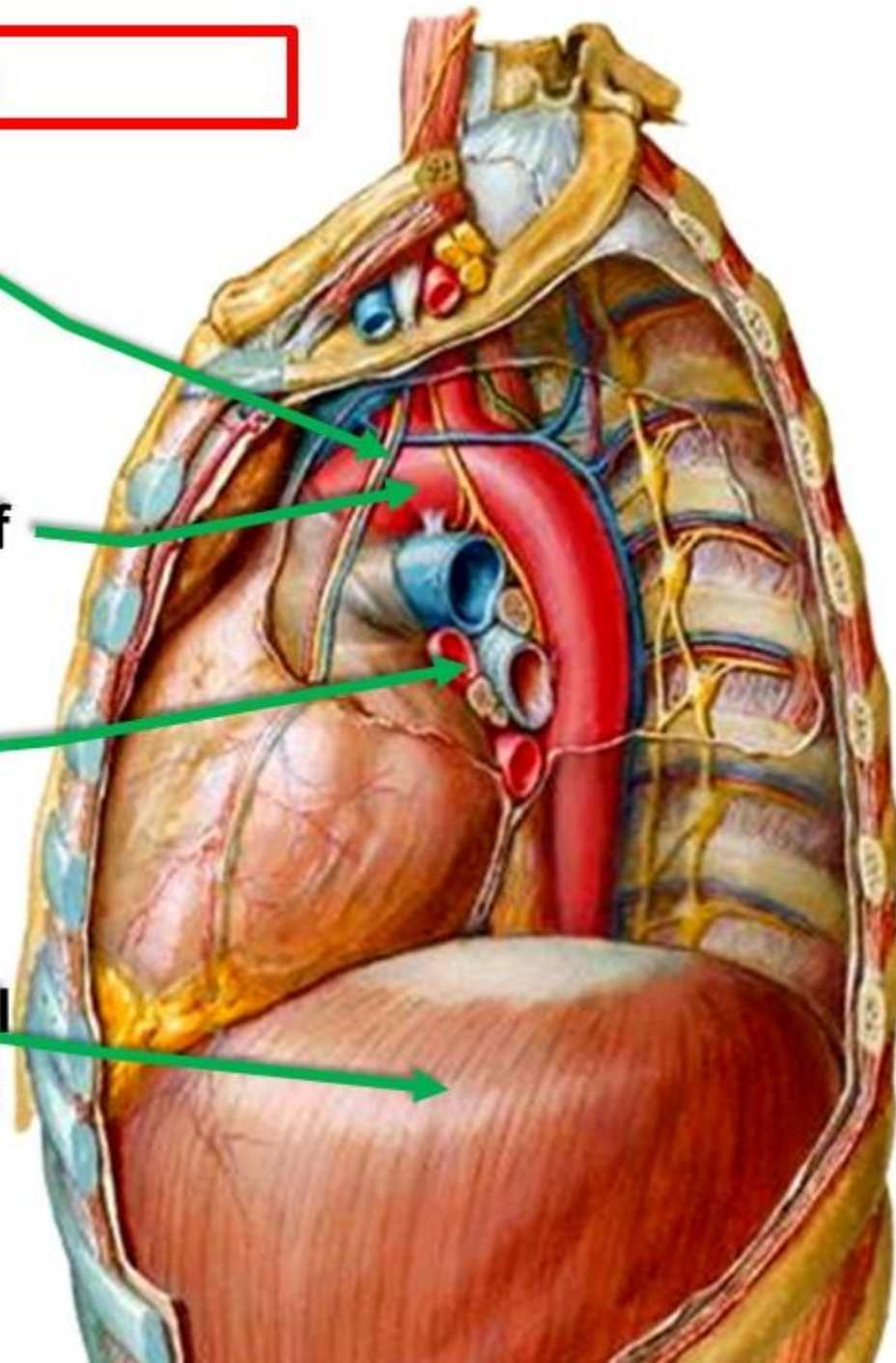
Left phrenic nerve

Left Phrenic nerve
with
pericardiophrenic
vessel

**Crosses Arch of
aorta**

**Infront Root of left
lung**

**enters the abdominal
cavity** by piercing the
left cupola of the
diaphragm



**** Branches of both
phrenic nerves**

**a- Motor to the
diaphragm** through its
abdominal surface.

**b- Sensory to 3 P (Pleura,
Pericardium and
Peritoneum).**

**- The right phrenic nerve
supply:** - Gall bladder and
upper surface of the liver.-
Right Suprarenal gland.

**** Clinical anatomy**

- **Left phrenic nerve Longer than the right: because**
 - 1- The right nerve is straight.
 - 2- The right cupola of the diaphragm is higher than the left.
- **Referred pain** from gall bladder is felt in right shoulder **because the right phrenic nerve and right supraclavicular nerves arise from ventral rami of C3, C4**
- **It arises from C3,4,5** because diaphragm is developed from the transverse septum in the neck then descends.
- **It supplied the diaphragm through its abdominal surface** because after folding of the embryo the diaphragm is reversed.
- **Injury of the phrenic nerve in one side** leading to **paradox movement** (diaphragm ascends during inspiration and descends during expiration)
- **Injury of both sides** (medical emergency) The patient can not breathe and require ventilator.
- **Hiccough (Hiccup)** repeated **spasmodic sharp contraction of the diaphragm**

dr_youssefhussein@yahoo.com

