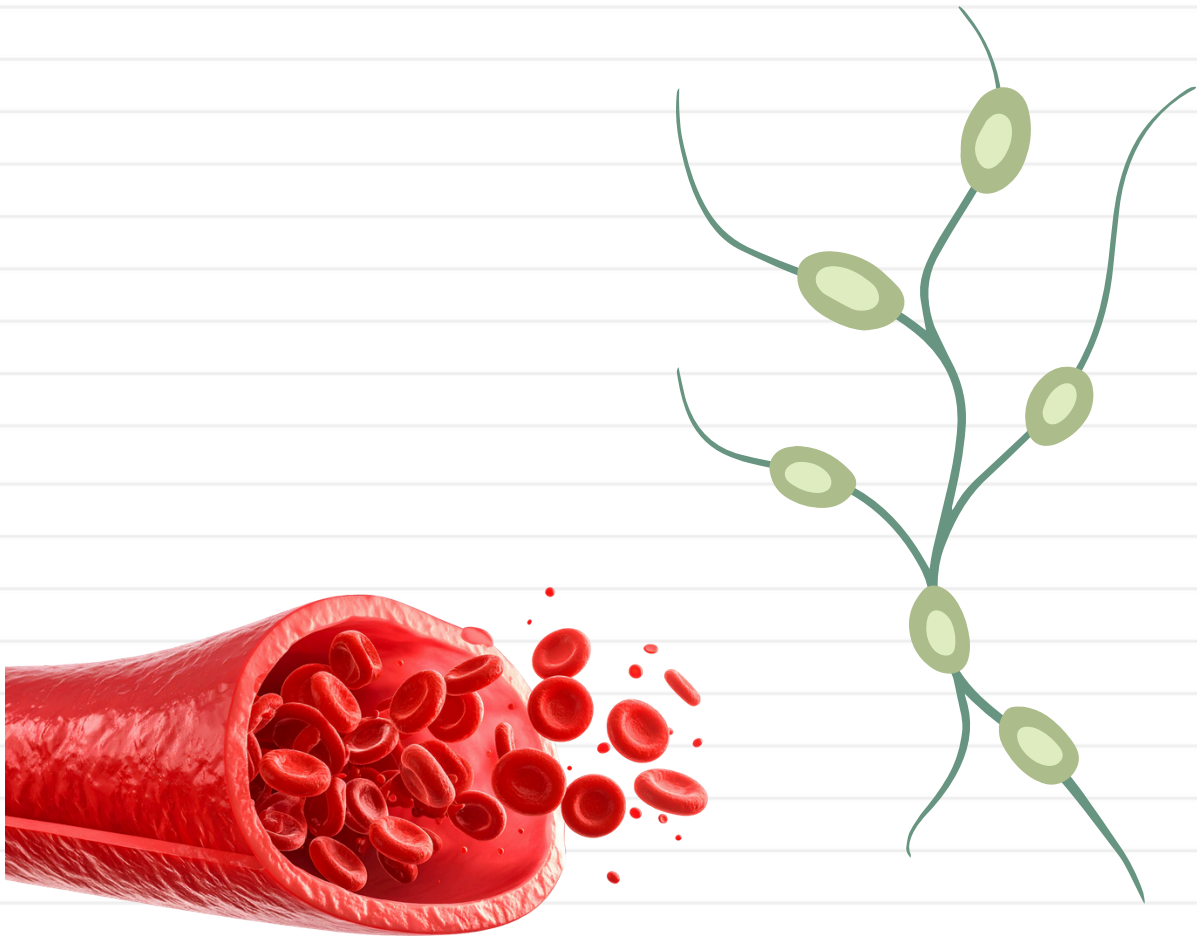


# Hemolymphatic system



Shaghaf Batch (2025-2026)

## Group A

# Hemolymphatic system

	9:00-10:00	10:00-11:00	11:30-12:30	12:30-1:30	1:30-2:30	2:30-3:30
Sun 29/3	Anat.1	Physio.1	Micro.1	Histo.1		
Mon 30/3	Anat.2	Histo.2	OH	Bio.1		
Tue 31/3	Physio.2	Pharma.1	Patho.1	HA	Micro.2	
Wed 1/4	Histo.3	Physio.3	OH	Patho.2	Bio.2	
Thu 2/4	Micro.3	Bio.3	Histo.4	Pharma.2	Physi.lab.1	
Sun 5/4	Physio.4	Path.3	Histo.5	Pharma.3	HA	
Mon 6/4	Patho.4	Histo.6	OH	Bio.4	Histo.lab.1	
Tue 7/4	Bio.5	Pharma.4	Micro.4	Patho.5	Physio.5	
Wed 8/4	Bio.6	Patho.6	OH	Micro.5	Histo.lab.2	
Thu 9/4	Patho.7	Physio.6	<b>OH EXAM</b>		Micro.lab.1	
Sun 12/4	Pharma.5	Patho.8	Patho.9	Physio.7	Physio.8	
Mon 13/4	Physio.9	Bio.7	OH	Patho.10	Micro.6	
Tue 14/4	<b>HA EXAM</b>		Patho.11	Micro.7	Pharma.6	Com.1
Wed 15/4	Patho.12	Pharma.7	Com.2	Bio.8	Micro.lab.2	
Thu 16/4	Pharma.8	Path.13	HA	Physi.lab.2		
<b>25/4 End Course Exam // 26/4 Practical Exam</b>						

• ملاحظة : امتحان HA ينتهي 10:30 وعليه يتم إزاحة الوقت على هذا الاساس في يوم الامتحان

# ENS - Number of Lectures

## Pathology

- Lec.1
- Lec.2
- Lec.3
- Lec.4
- Lec.5
- Lec.6
- Lec.7
- Lec.8
- Lec.9
- Lec.10
- Lec.11
- Lec.12
- Lec.13

## Community

- Lec.1
- Lec.1

## Pharma

- Lec.1
- Lec.2
- Lec.3
- Lec.4
- Lec.5
- Lec.6
- Lec.7
- Lec.8

## Micro

- Lec.1
- Lec.2
- Lec.3
- Lec.4
- Lec.5
- Lec.6
- Lec.7

## Anatomy

- Lec.1
- Lec.2

## Physio

- Lec.1
- Lec.2
- Lec.3
- Lec.4
- Lec.5
- Lec.6
- Lec.7
- Lec.8
- Lec.9

## Histo

- Lec.1
- Lec.2
- Lec.3
- Lec.4
- Lec.5
- Lec.6

## Biochem

- Lec.1
- Lec.2
- Lec.3
- Lec.4
- Lec.5
- Lec.6
- Lec.7
- Lec.8

