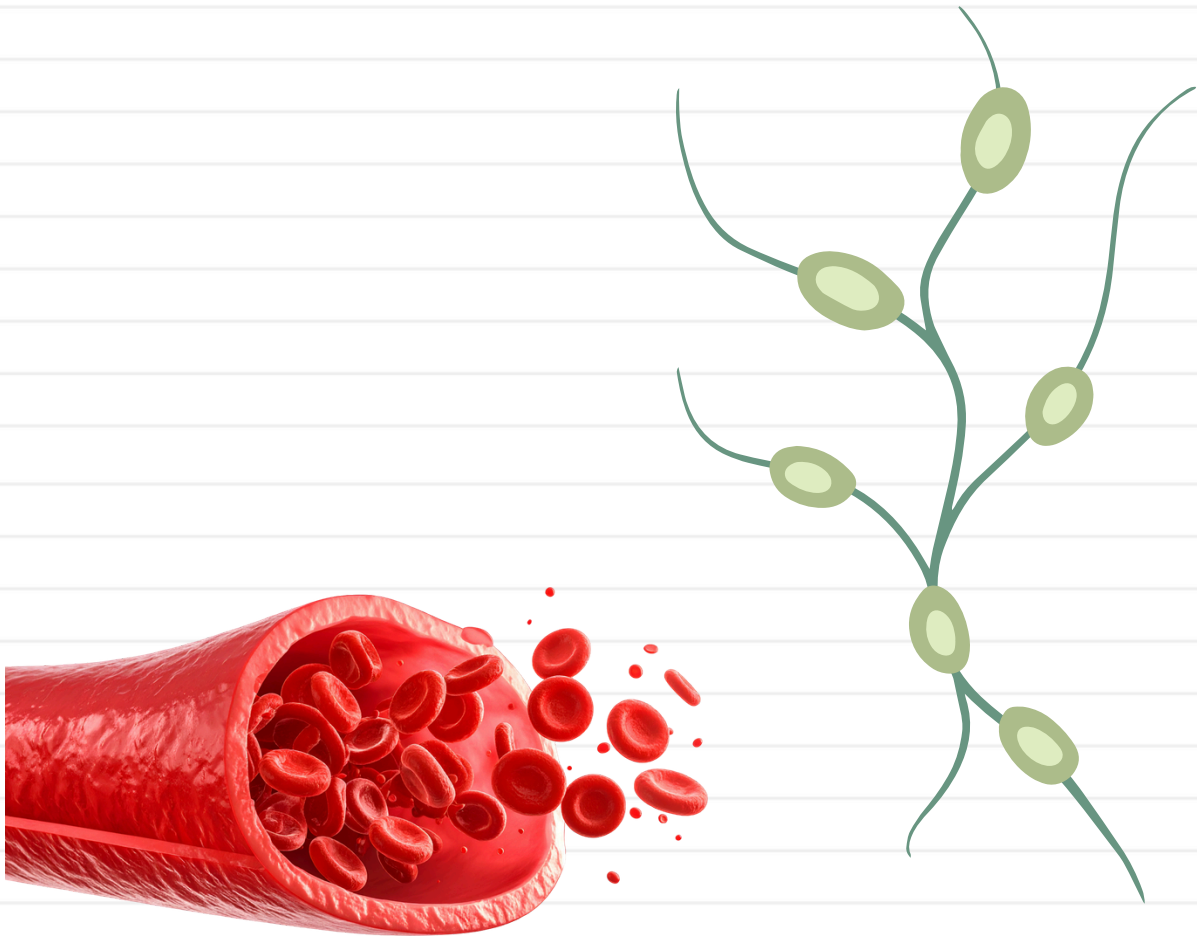


Hemolymphatic system



Shaghaf Batch (2025-2026)

Group B

Hemolymphatic system

	9:00-10:00	10:00-11:00	11:30-12:30	12:30-1:30	1:30-2:30	2:30-3:30
Sun 29/3	Physio.1	Anat.1	Histo.1	Micro.1		
Mon 30/3	Histo.2	Anat.2	Bio.1	OH		
Tue 31/3	Pharma.1	Physio.2	HA	Micro.2	Patho.1	
Wed 1/4	Physio.3	Histo.3	Patho.2	Bio.2	OH	
Thu 2/4	Bio.3	Micro.3	Pharma.2	Histo.4	Histo.lab.1	
Sun 5/4	Patho.3	Physio.4	Pharma.3	HA	Histo.5	
Mon 6/4	Histo.6	Patho.4	Bio.4	OH	Physi.lab.1	
Tue 7/4	Pharma.4	Bio.5	Physio.5	Micro.4	Patho.5	
Wed 8/4	Patho.6	Bio.6	Micro.5	OH	Micro.lab.1	
Thu 9/4	Physio.6	Patho.7	OH EXAM		Histo.lab.2	
Sun 12/4	Patho.8	Pharma.5	Physio.7	Physio.8	Patho.9	
Mon 13/4	Bio.7	Physio.9	Micro.6	OH	Patho.10	
Tue 14/4	HA EXAM		Micro.7	Path.11	Com.1	Pharma.6
Wed 15/4	Pharma.7	Path.12	Bio.8	Com.2	Physi.lab.2	
Thu 16/4	Patho.13	Pharma.8	Micro.lab.2	HA		
25/4 End Course Exam // 26/4 Practical Exam						

• ملاحظة : امتحان HA ينتهي 10:30 وعليه يتم إزاحة المحاضرات على هذا الأساس في يوم الامتحان

Hls - Number of Lectures

Pathology

- Lec.1
- Lec.2
- Lec.3
- Lec.4
- Lec.5
- Lec.6
- Lec.7
- Lec.8
- Lec.9
- Lec.10
- Lec.11
- Lec.12
- Lec.13

Community

- Lec.1
- Lec.1

Pharma

- Lec.1
- Lec.2
- Lec.3
- Lec.4
- Lec.5
- Lec.6
- Lec.7
- Lec.8

Micro

- Lec.1
- Lec.2
- Lec.3
- Lec.4
- Lec.5
- Lec.6
- Lec.7

Anatomy

- Lec.1
- Lec.2

Physio

- Lec.1
- Lec.2
- Lec.3
- Lec.4
- Lec.5
- Lec.6
- Lec.7
- Lec.8
- Lec.9

Histo

- Lec.1
- Lec.2
- Lec.3
- Lec.4
- Lec.5
- Lec.6

Biochem

- Lec.1
- Lec.2
- Lec.3
- Lec.4
- Lec.5
- Lec.6
- Lec.7
- Lec.8

