

وسهلا



أهلا

يُمنع أخذ السلايدات بدون
إذن المحرر واي اجراء
يخالف ذلك يقع تحت طائلة
المسؤولية القانونية
جميع المعلومات للاستخدام
التعليمي فقط

الأستاذ الدكتور يوسف حسين

كلية الطب - جامعة مؤتة - الأردن

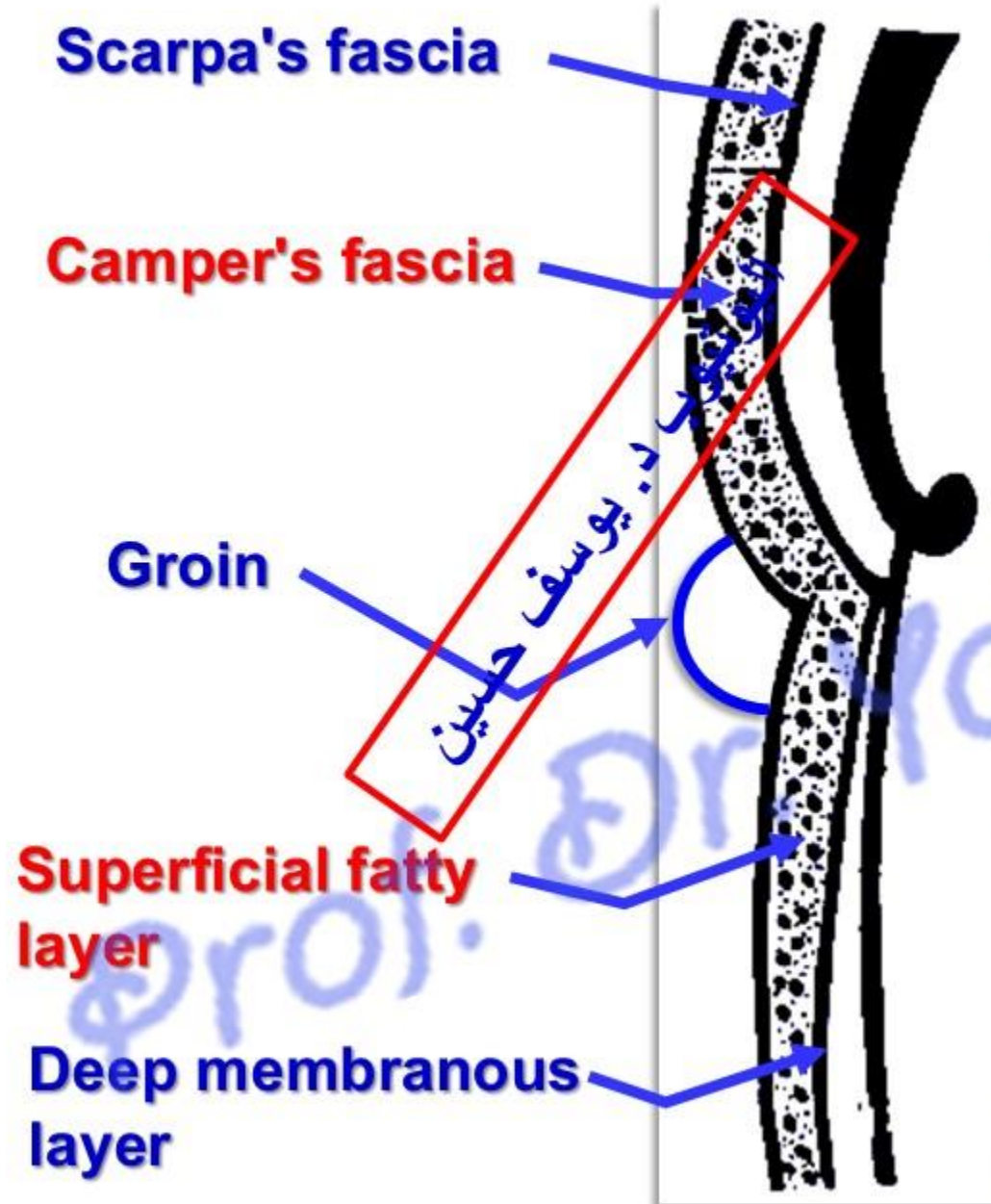
دكتورة من جامعة كولونيا المانيا

Prof. Dr. Youssef Hussein Anatomy - YouTube

الواتس (أي استفسار)
00201224904207

Front of the thigh

اليوتيوب د. يوسف حسين



- **Superficial Fascia of front of Thigh**

- It is differentiated into:

- a. **Superficial fatty layer:** thick especially in the medial side of the thigh.

- It continuous with Superficial fatty layer of anterior abdominal wall (**Camper's fascia**)

- a. **Deep membranous layer:** continuous with Deep membranous layer of anterior abdominal wall (**Scarpa's fascia**)

- **** Groin** (Inguinal groove); junction of the anterior abdominal wall with front of thigh.

- **Iliotibial Tract**

- It is the thickened lateral part of the **deep fascia of the thigh.**

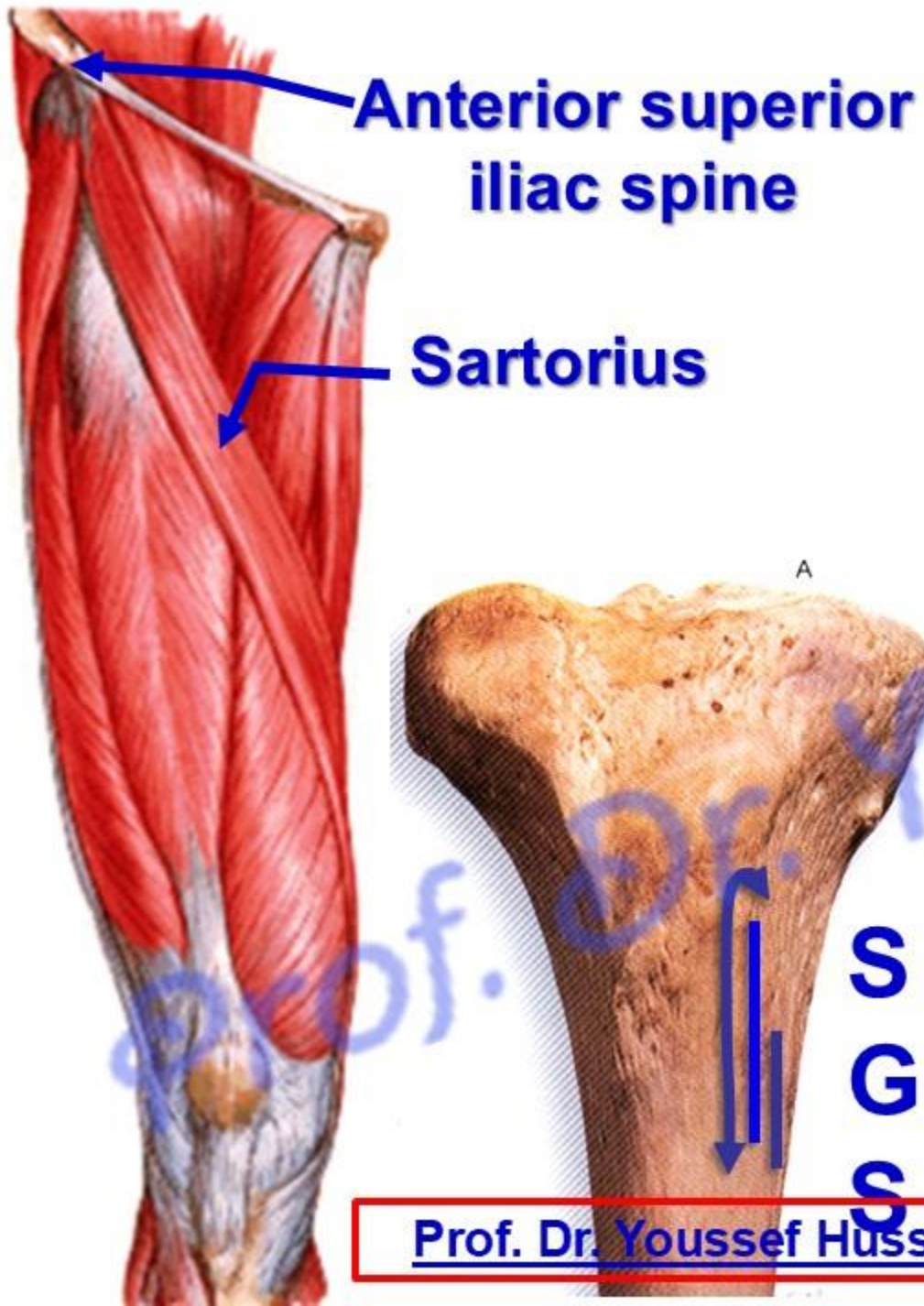
Muscles of Front of the thigh

dr.youssefhussein@yahoo.com

اليوتيوب د. يوسف حسين

- **Nerve supply:** All muscles of the front of thigh is supplied by femoral nerve

Prof. Dr. Youssef Hussein Anatomy - YouTube



**Anterior superior
iliac spine**

Sartorius

❖ **Sartorius**

- It is the longest muscle of the body and it may be **absent**.

** **Origin:** from anterior superior iliac spine below attachment of inguinal ligament.

** **Insertion:** into the upper part of the medial surface of the tibia (SGS) sartorius, gracilis, semitendinosus from anterior to posterior.

dr_youssefhussein@yahoo.com

[Prof. Dr. Youssef Hussein Anatomy - YouTube](#)



Sartor = tailor

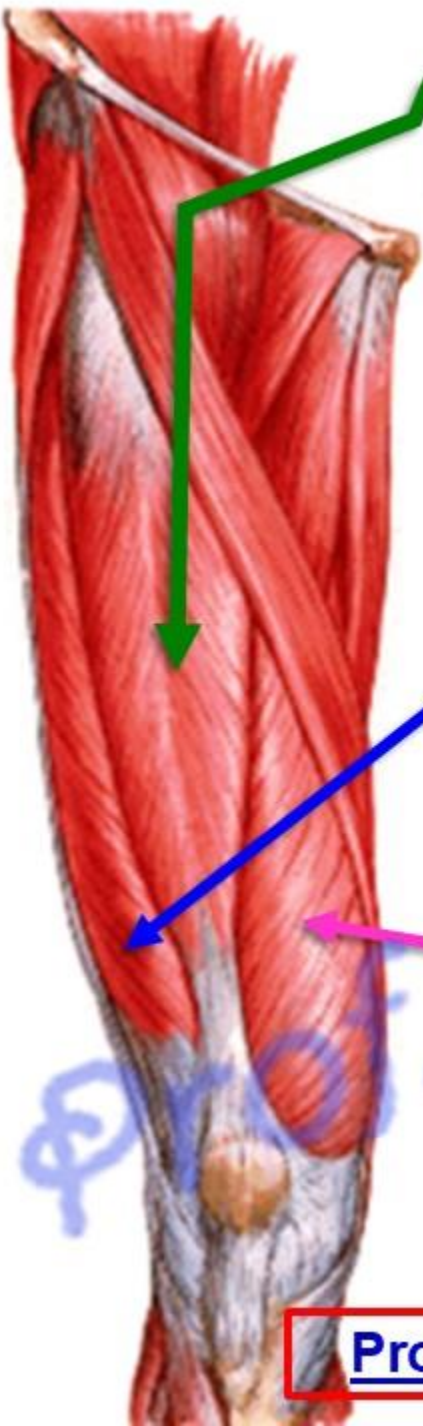
** Actions:

a- Flexion, abduction and lateral rotation of the thigh (**Hip joint**).

b- Medial rotation of the flexed leg (**Knee joint**).

N.B; Putting the lower limb in the classical cross leg position (tailor position)



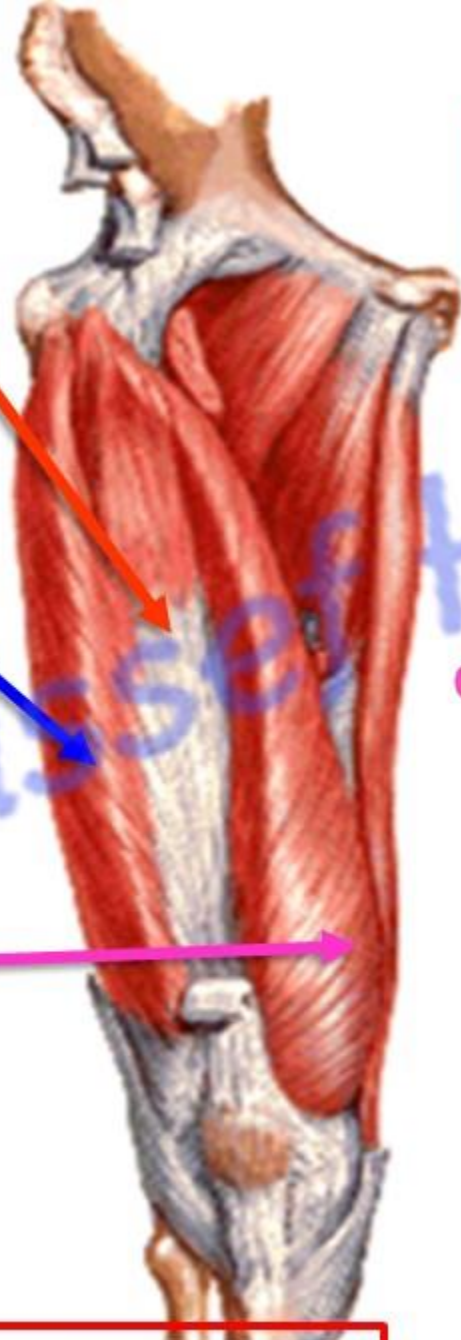


Rectus femoris

Vastus intermedius

Vastus lateralis

Vastus medialis



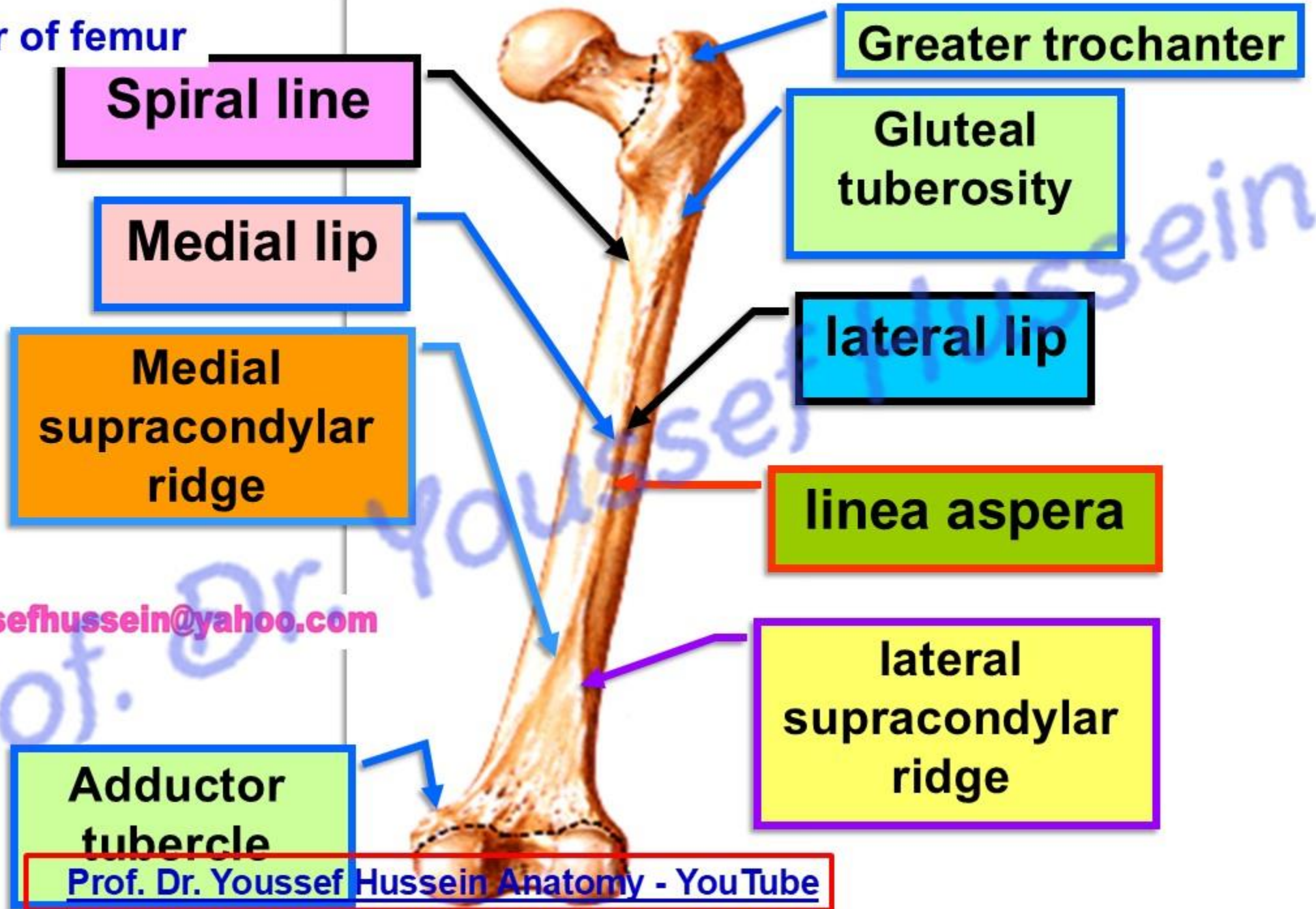
Quadriceps muscle

dr_youssefhussein@yahoo.com

الليوتوب د. يوسف حسين

Prof. Dr. Youssef Hussein Anatomy - YouTube

Posterior of femur

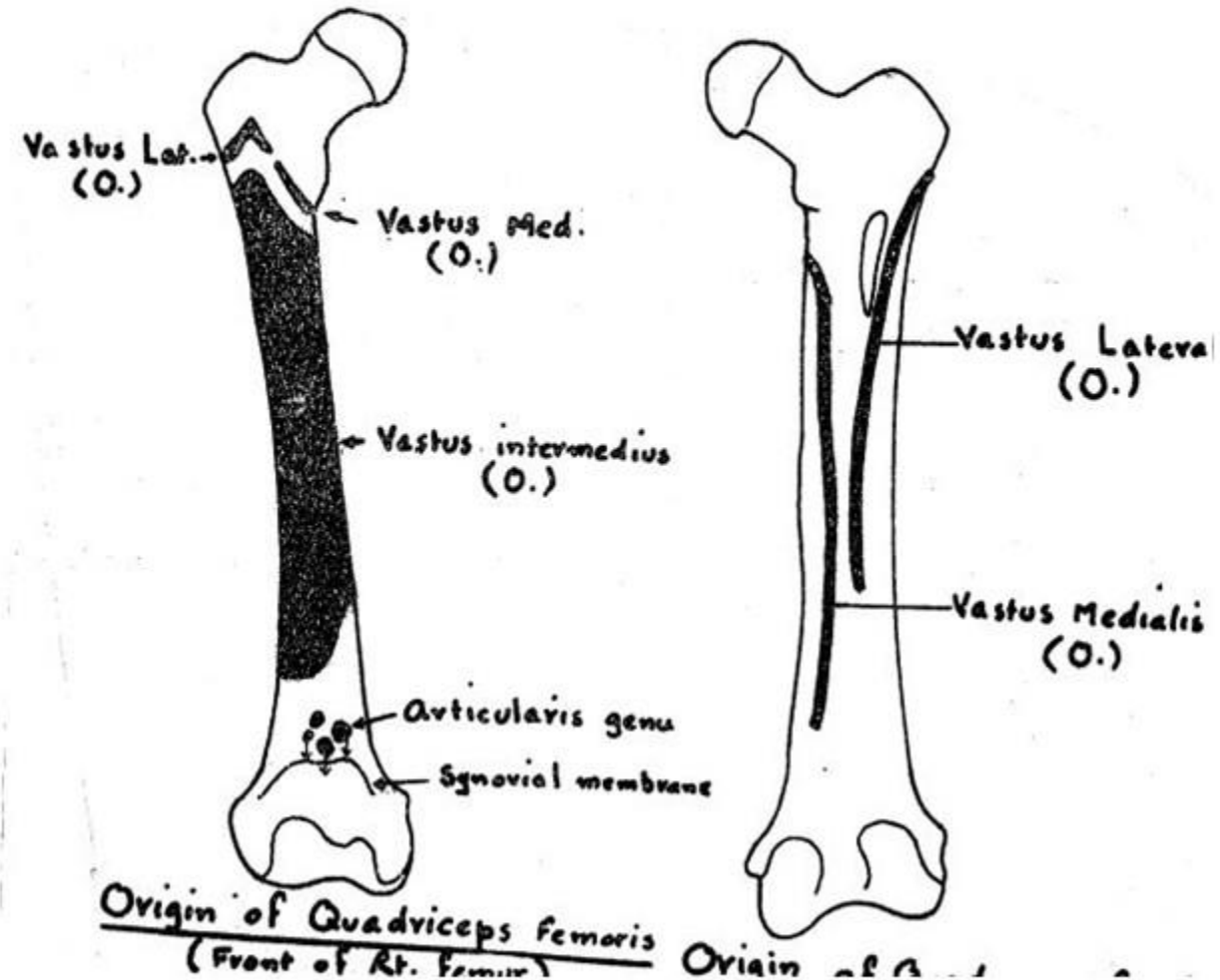


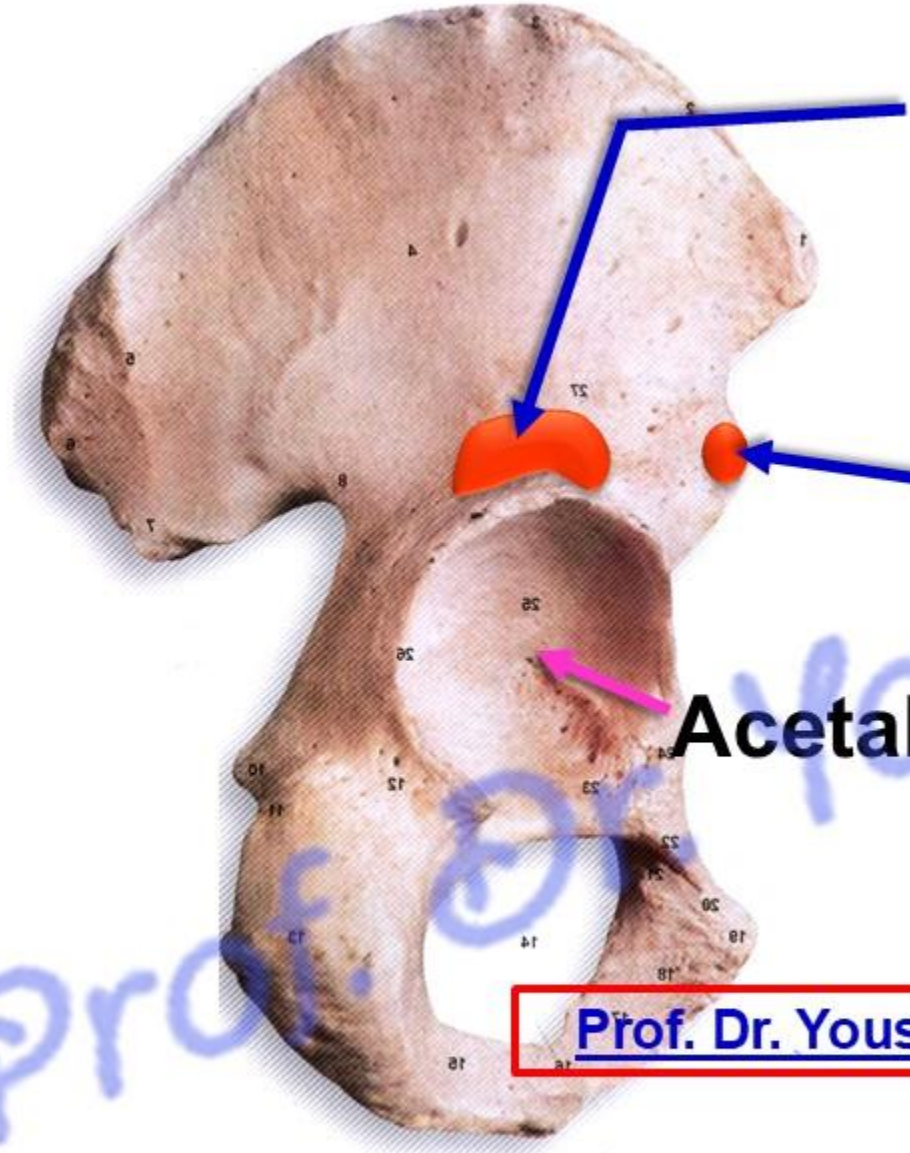
dr_youssefhussein@yahoo.com

Prof. Dr. Youssef Hussein Anatomy - YouTube

⑩ Origin of Quadriceps Femoris

- **1- Vastus lateralis:** arises by a linear origin from
 - 1- Upper part of the intertrochanteric line.
 - 2- Root of the greater trochanter.
 - 3- Lateral margin of the gluteal tuberosity.
 - 4- Lateral lip of the linea aspera.
 - 5- Lateral supracondylar line.
- **2- Vastus medialis:** also arises by a linear origin from
 - 1- Lower part of the Intertrochanteric line.
 - 2- Spiral line.
 - 3- Medial lip of the linea aspera.
 - 4- Medial supracondylar line.
- **3- Vastus intermedius,** from the upper 3/4 of the anterior and lateral surfaces of the shaft of the femur.





Reflected head from an impression just above the acetabulum.

dr_youssefhussein@yahoo.com

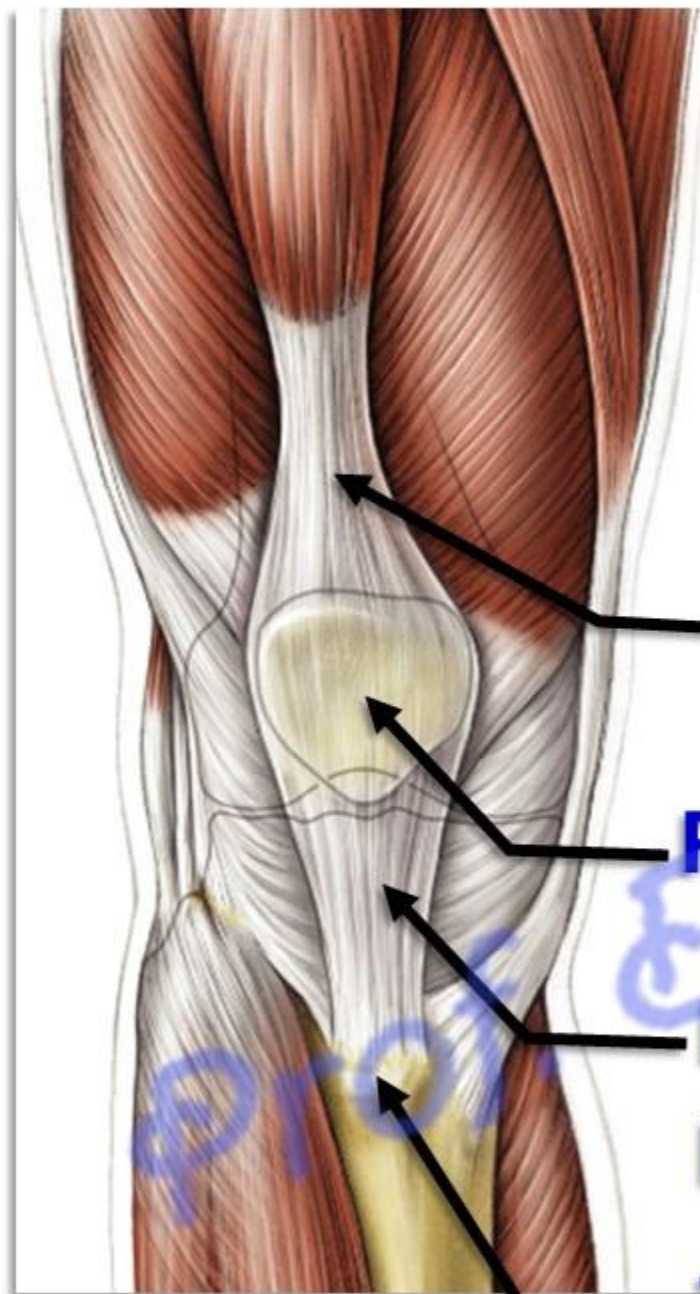
Straight head of Rectus femoris from the anterior inferior iliac spine

Acetabulum

[Prof. Dr. Youssef Hussein Anatomy - YouTube](#)

Origin of rectus femoris

اليوتيوب د. يوسف حسين



dr_youssefhussein@yahoo.com

Quadriceps tendon

Patella

Ligamentum patellae

Tibial tuberosity

❖ **** Insertion of quadriceps muscles:**

- The four muscles fuse into a common tendon called **quadriceps tendon** which is inserted into the base, borders of the **patella**.

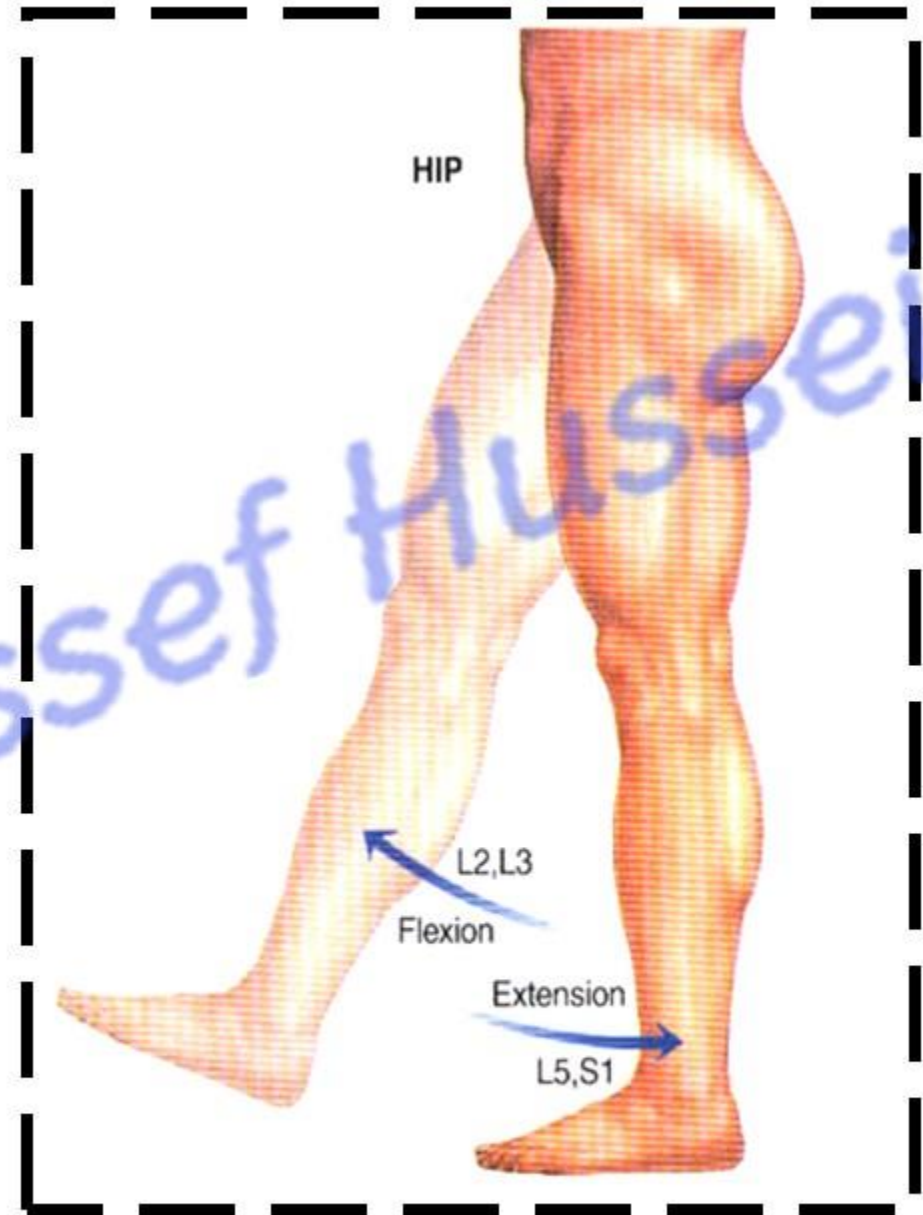
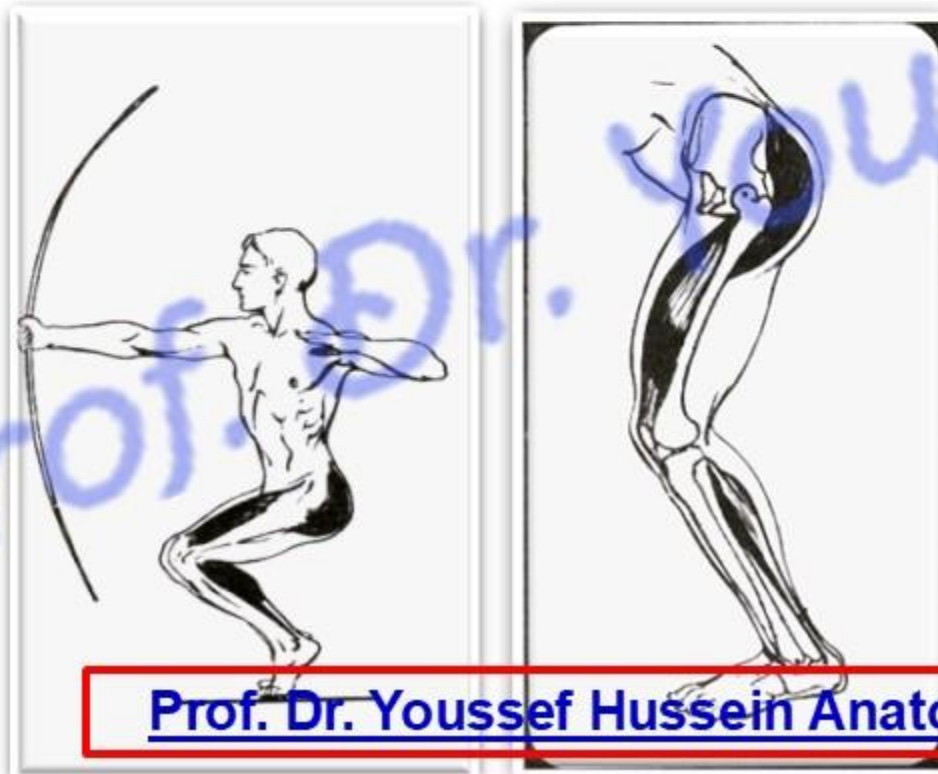
- The **Ligamentum patellae**; carries the insertion to the upper part of tibial tuberosity.

Prof. Dr. Youssef Hussein Anatomy - YouTube

**** Actions of quadriceps:**

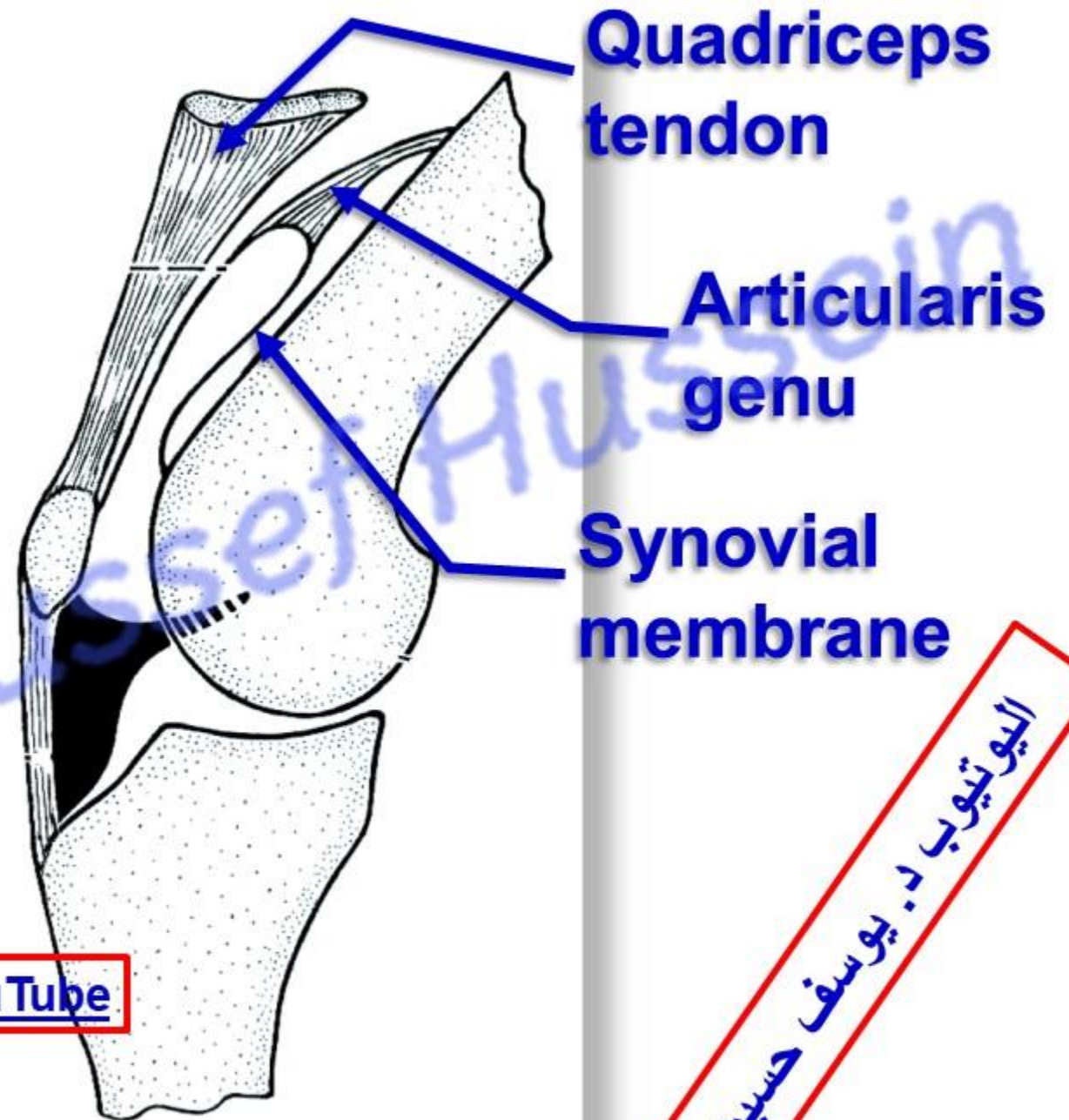
- 1- Main extensor of knee joint.**
- 2- Raising from the sitting position**
- 3- Rectus femoris helps in flexion of the hip joint.**

dr_youssefhussein@yahoo.com



❖ Articularis genu muscle

- ** **Origin**, from the lower part of the anterior surface of the femur.
- ** **Insertion**, into the synovial membrane of the knee joint.
- ** **Action**, It pulls the synovial membrane up during extension of the knee joint to prevent its damage between the bones.



[Prof. Dr. Youssef Hussein Anatomy - YouTube](https://www.youtube.com/channel/UC...)

dr_youssefhussein@yahoo.com

اليو تيوب د. يوسف حسين

Femoral Triangle

اليوتيوب د. يوسف حسين

[Prof. Dr. Youssef Hussein Anatomy - YouTube](#)

Iliacus

Psoas major

Femoral nerve

Femoral Triangle

** an inverted triangular space on the front of the upper third of the thigh.

Sartorius

Inguinal ligament

Femoral artery

Femoral vein

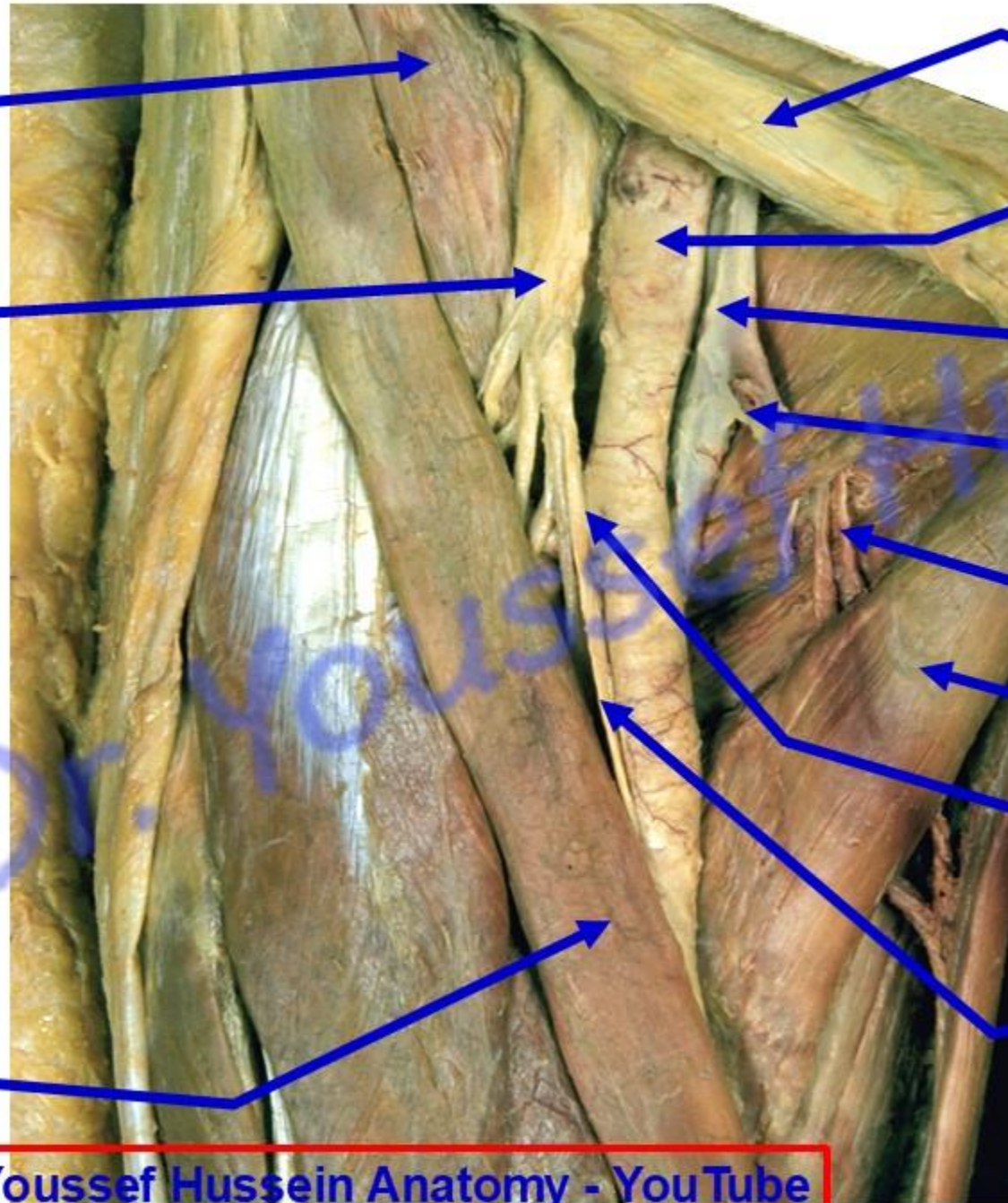
Great saphenous vein

Pectineus

Adductor longus

Profunda femoris artery

Saphenous nerve



**** Boundaries of the femoral triangle**

1- Base; inguinal ligament.

2- Medially, medial border of adductor longus.

3- Laterally, medial border of sartorius.

4- Apex, the meeting of the medial and lateral borders (continuous below with the adductor canal).

5- Floor: formed by 4 muscles; arranged from medial to lateral,

1) Adductor longus.

2) Pectineus.

3) Psoas major.

4) iliacus.

6- Roof: Skin, superficial fascia and deep fascia.

**** Contents of the femoral triangle :**

- 1- Femoral vein** and its tributaries.
- 2- Femoral artery** and its branches.
- 3- Femoral nerve** and its branches.
- 4- Femoral sheath** (fascia transversalis and fascia iliaca).
- 5- Great saphenous **vein**.
- 6- Profunda femoris **artery**.
- 7- Saphenous **nerve**
- 8- Lymph nodes:** superficial and deep inguinal lymph nodes.
- 9- Collection of fat.**

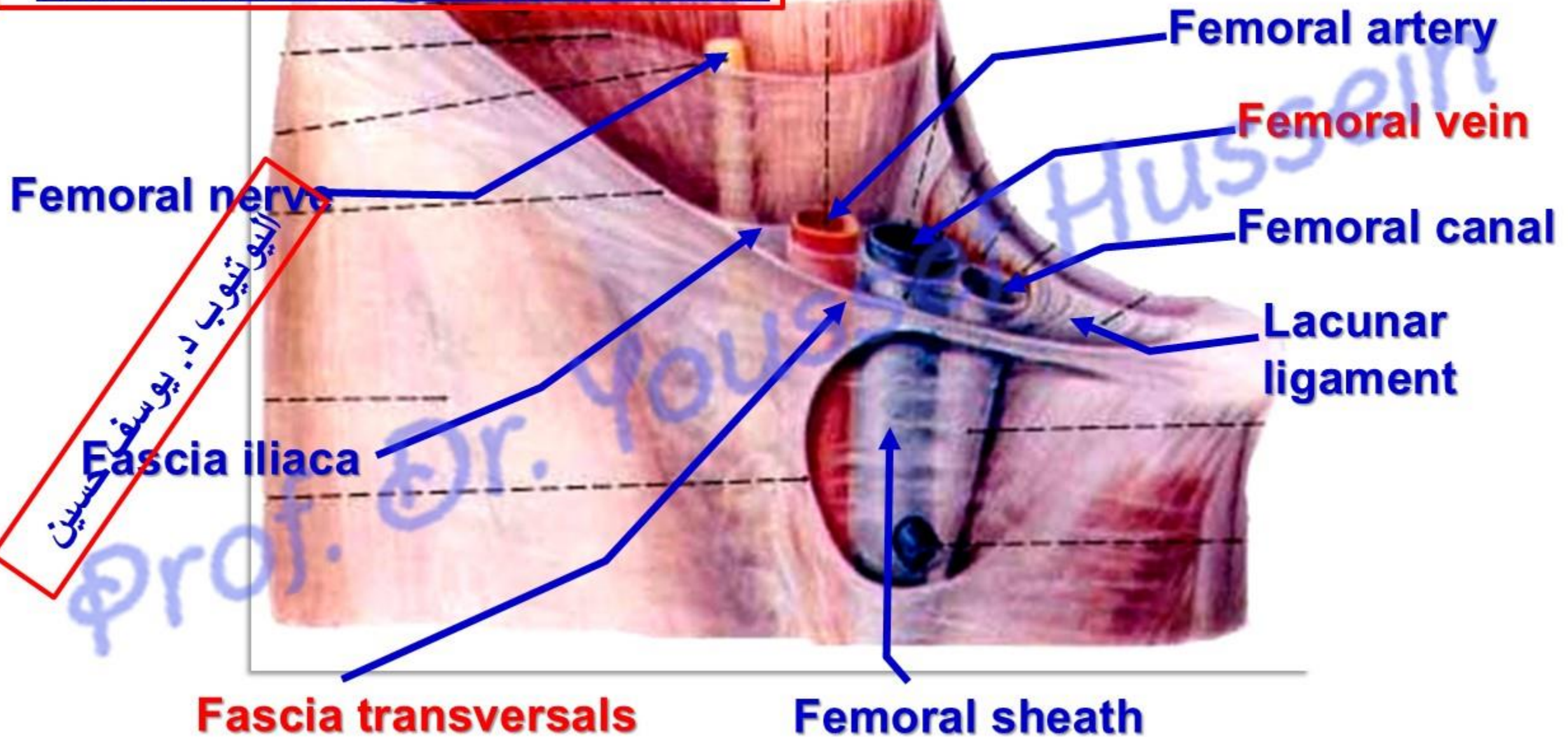
الـيـوتـيـوبـ دـ.ـ يـوسـفـ حـسـيـن

Femoral Sheath, Canal Hernia

[Prof. Dr. Youssef Hussein Anatomy - YouTube](#)

Femoral sheath

Prof. Dr. Youssef Hussein Anatomy - YouTube



• Femoral Sheath

** **Shape**; funnel-shaped around the femoral vessels

** **Compartments**:

- It is divided by 2 septa into 3 compartments.

A- Medial compartment: called femoral canal.

• Superiorly (base), abdominal opening called **femoral ring**.

• **Medially**: sharp base of the lacunar Ligament.

** **Contents of femoral canal**; Loose areolar **fatty** tissue and Lymph node of **Cloquet**.

** **Sex Differences of the ring**: It is **wider in female** than male and so **femoral hernia** is more common in female than male.

B- Intermediate compartment: transmits the femoral vein.

C- Lateral compartment: transmits femoral artery and femoral branch of the genitofemoral nerve.

N.B: femoral nerve passes outside the femoral sheath

**** Definition of femoral hernia;**

- Abnormal protrusion of any abdominal contents through the femoral ring and femoral canal to the front of the thigh just below the inguinal ligament.

**** Causes,** increased intraabdominal pressure as in chronic cough, constipation and during labor.

**** Sex Differences, more common in females** because

- 1) The femoral ring is wider in females.
- 2) Narrow blood vessels in females.
- 3) Weak muscle of anterior abdominal wall.
- 4) Repeated exposure to strains in childbearing.

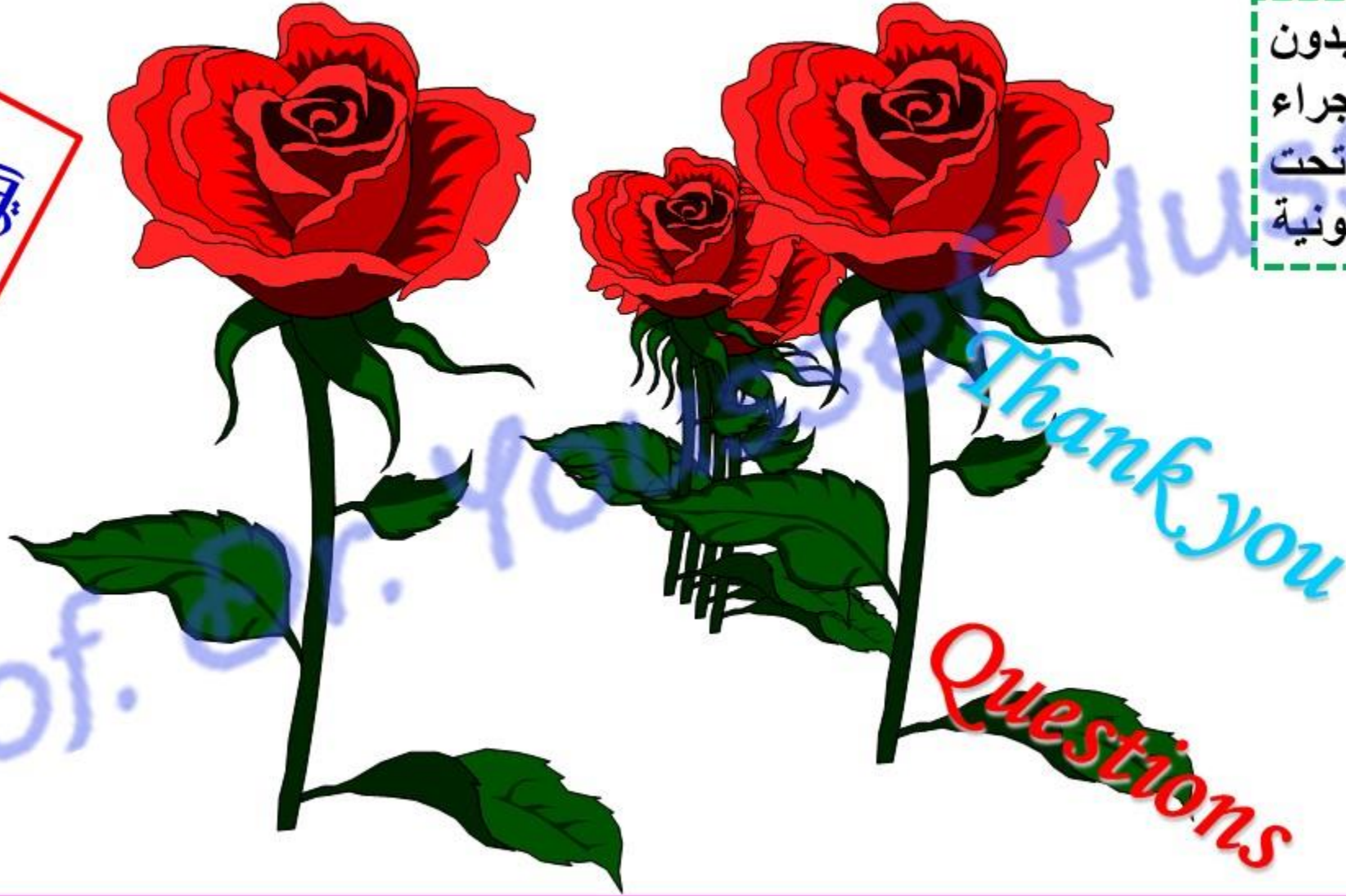
Surgical Complication: Injury to the bowel (small bowel perforation), injuries to the inferior epigastric vessels (hemorrhage),

اليو تيوب د. يوسف حسين

https://www.youtube.com/channel/UCVSNqbibj9UWYaJdd_cn0PQ

يُمنع أخذ السلايدات بدون
إذن المحرر واي اجراء
يخالف ذلك يقع تحت
طائلة المسؤولية القانونية

اليوتيوب د. يوسف حسين



Questions

<https://www.youtube.com/@ProfDrYoussefHusseinAnatomy/playlists>