

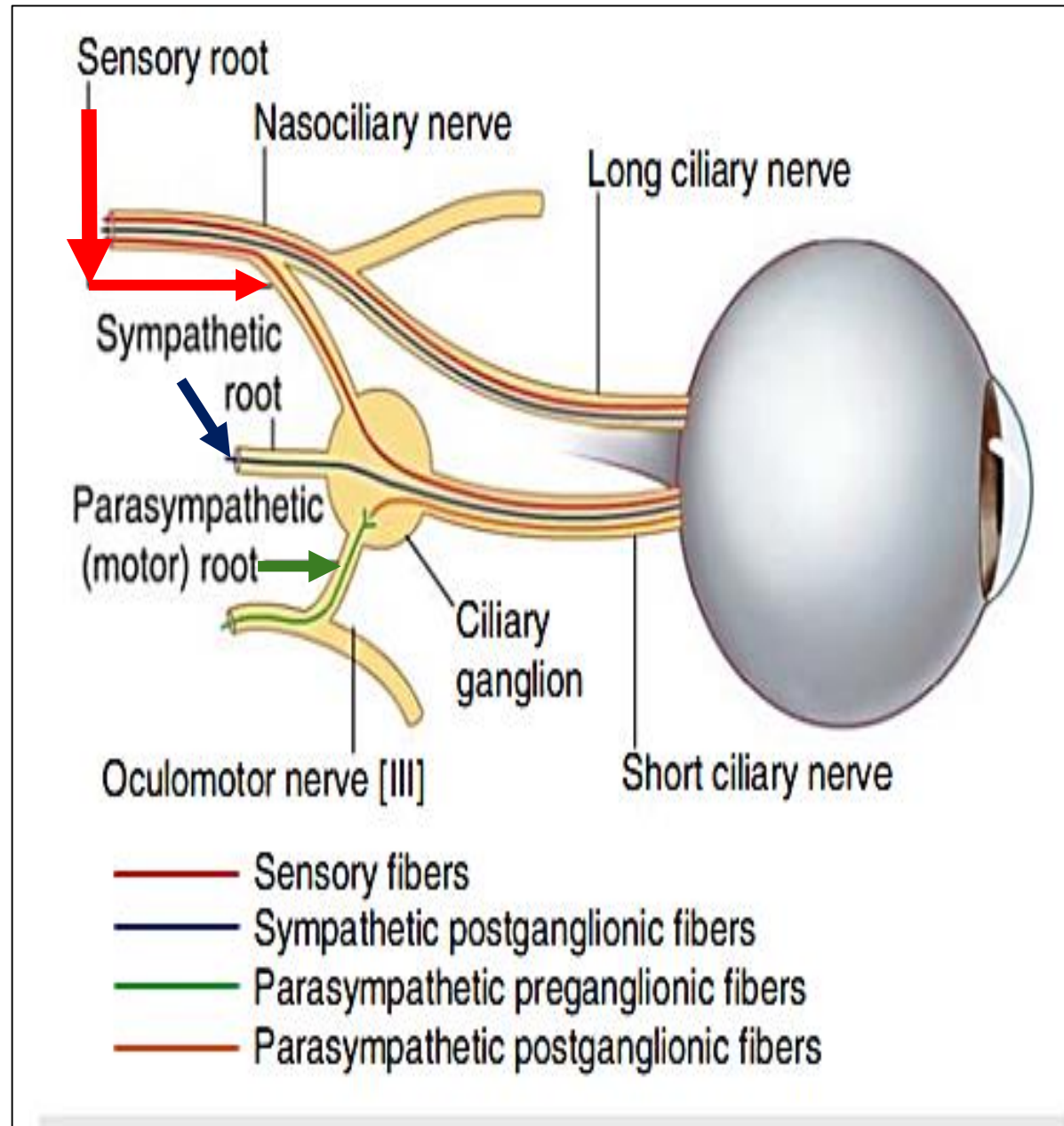
# **Neuroanatomy practical 6**

## **Autonomic nervous system**

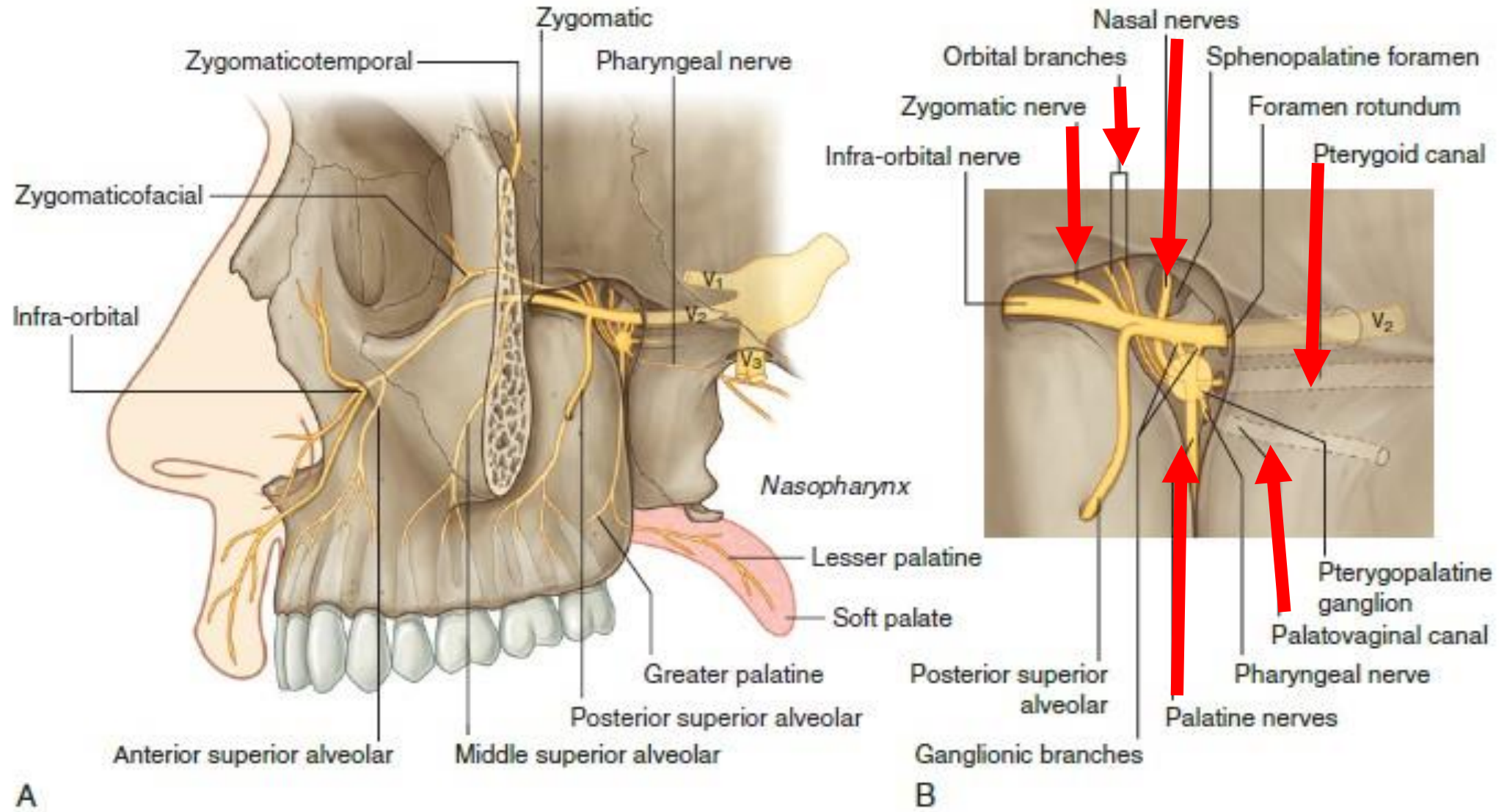
**Dr. Rasha Abdelaziz Abdellatif**

**Associate professor of human anatomy and  
Embryology – Mutah university**

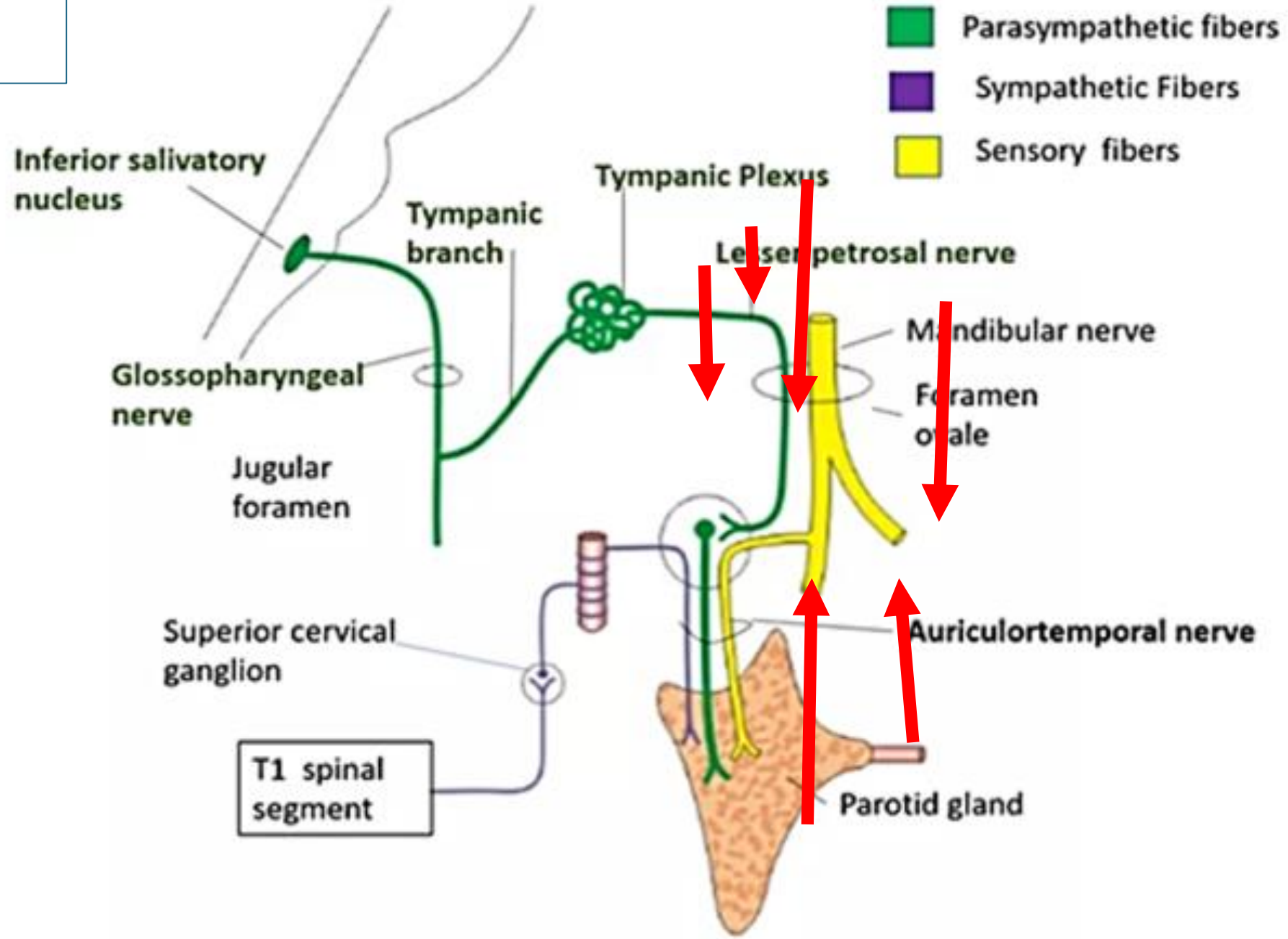
# Ciliary ganglia



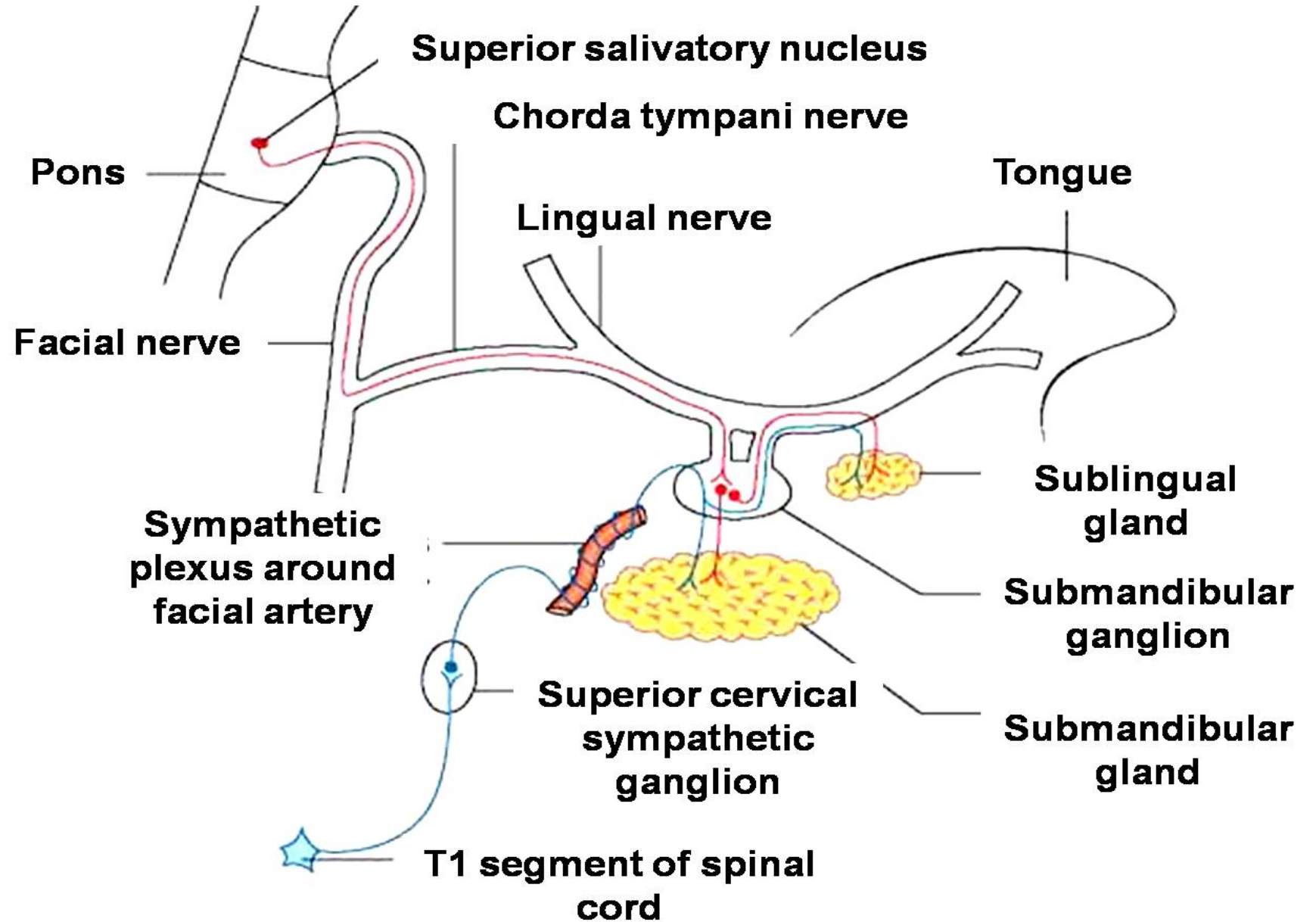
# Pterygopalatine ganglia



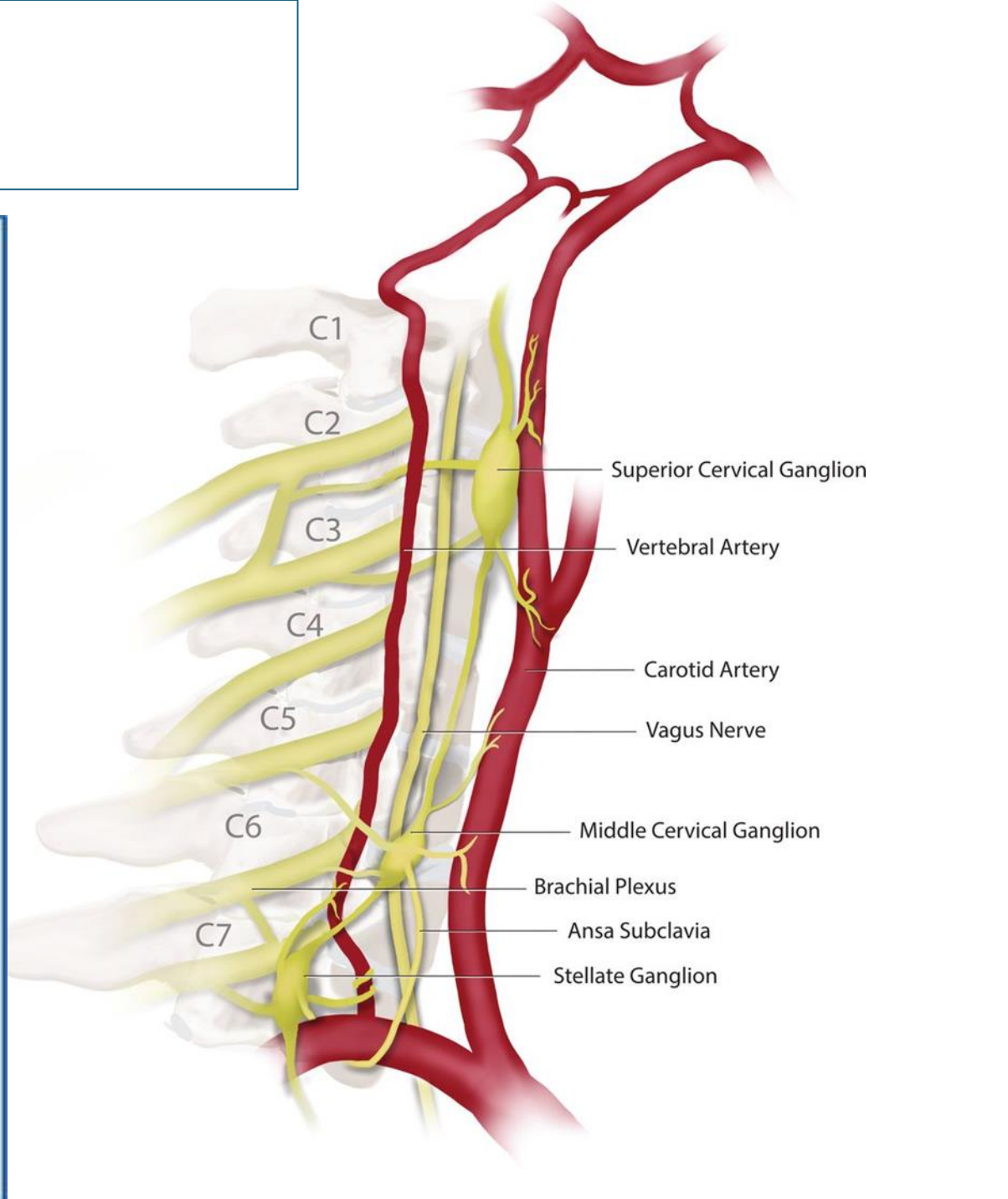
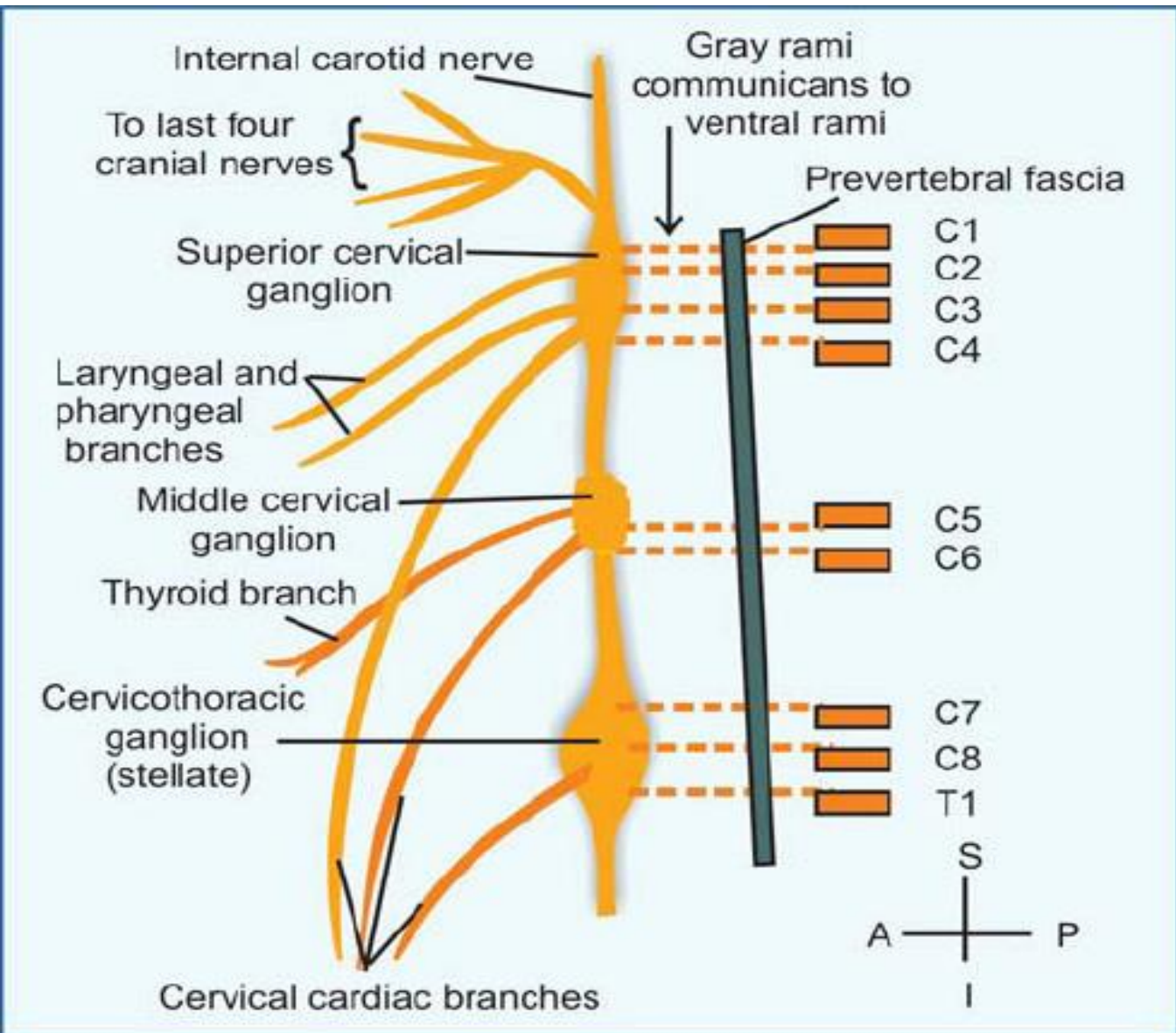
# Otic ganglia



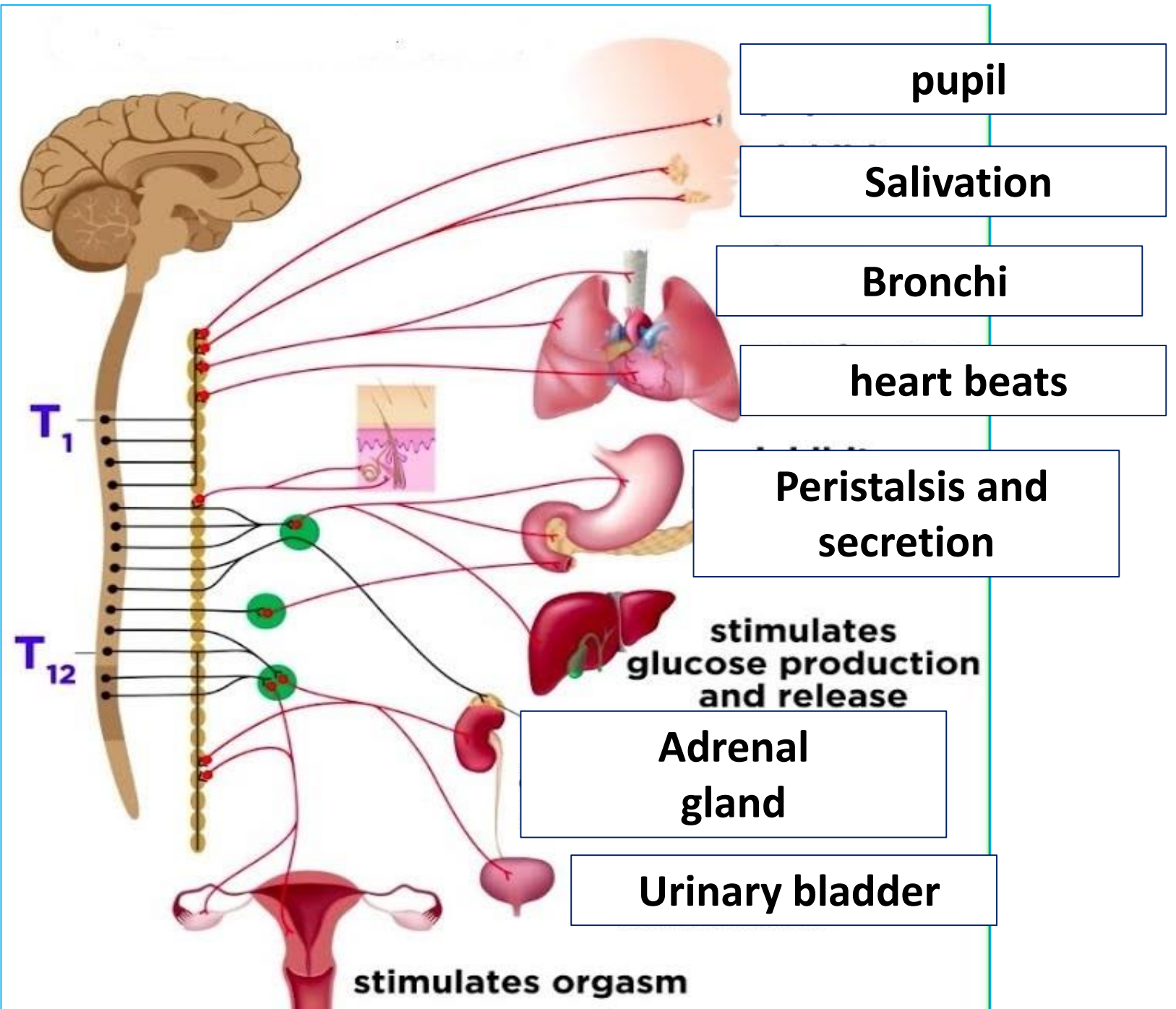
# Submandibular ganglia



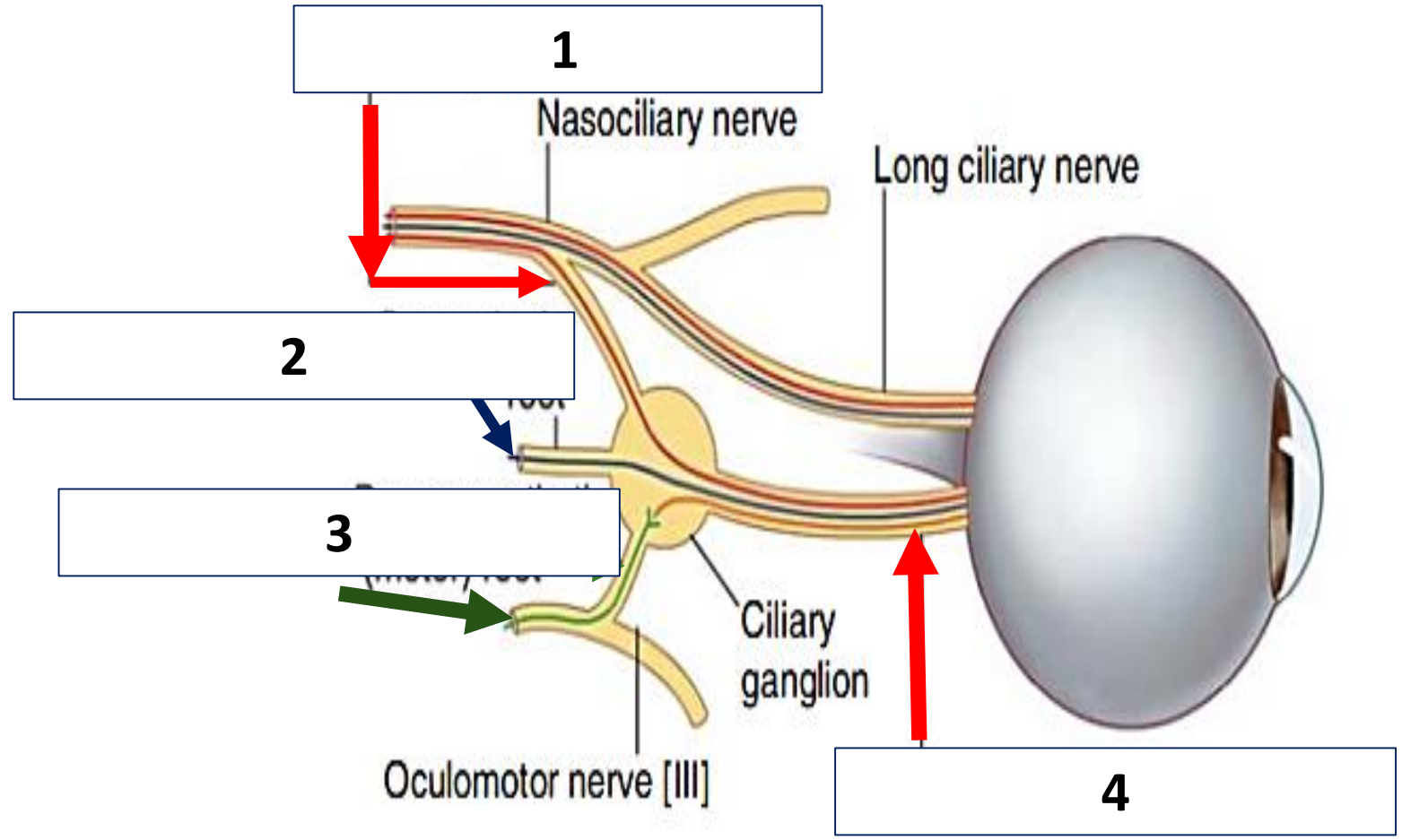
# Mention site and branches of Cervical sympathetic ganglia







**Describe the action of sympathetic on the following organs**

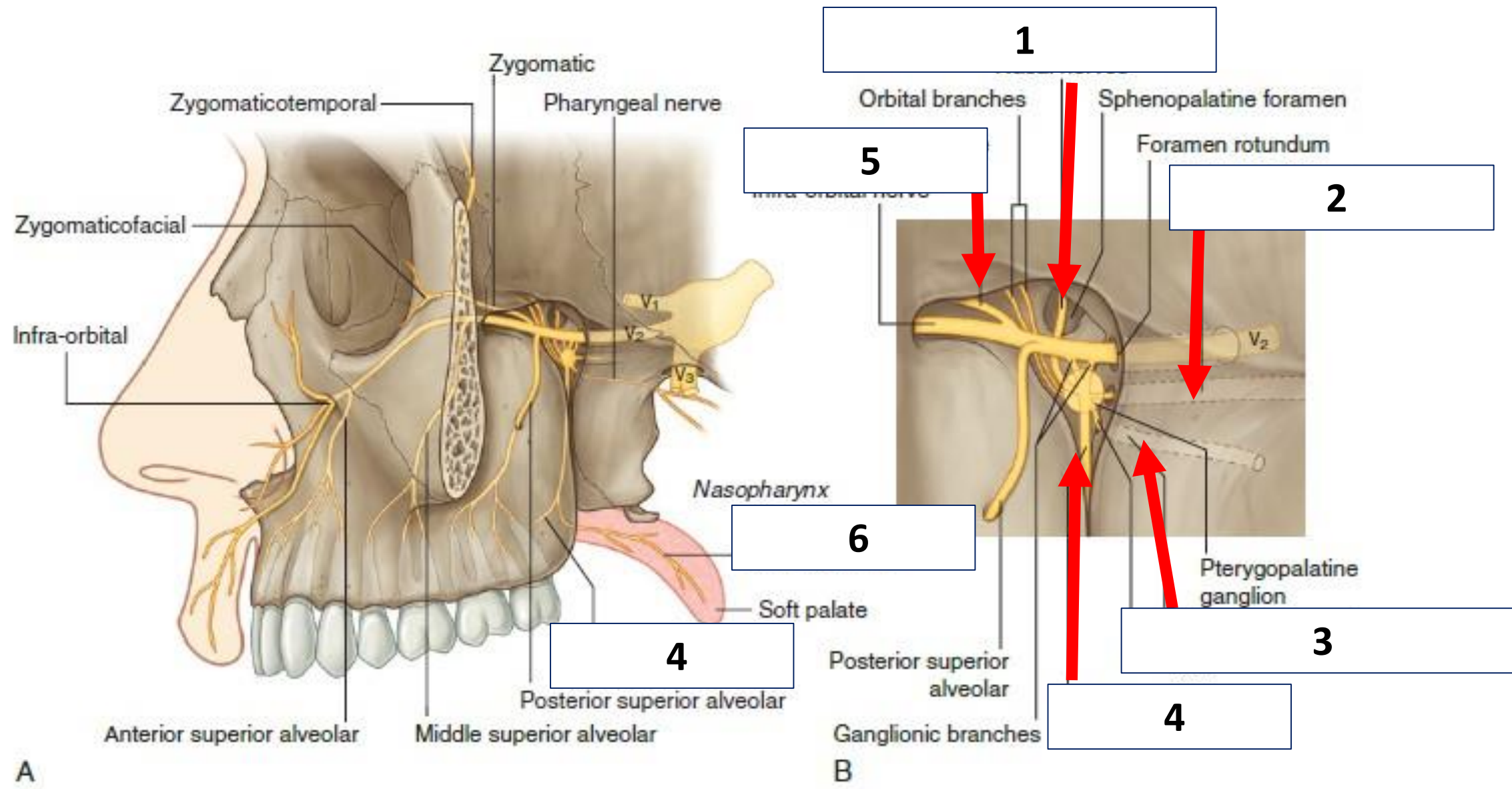


# Label the following diagram



-  Sensory fibers
-  Sympathetic postganglionic fibers
-  Parasympathetic preganglionic fibers
-  Parasympathetic postganglionic fibers

# Label the following diagram



THANK

YOU!

